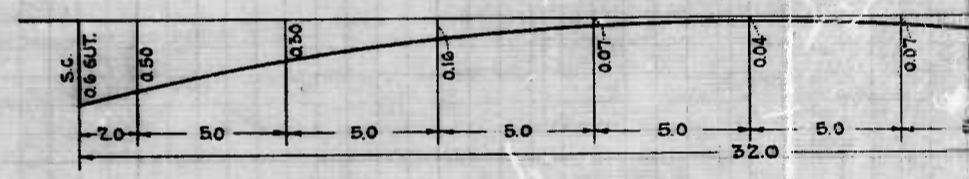
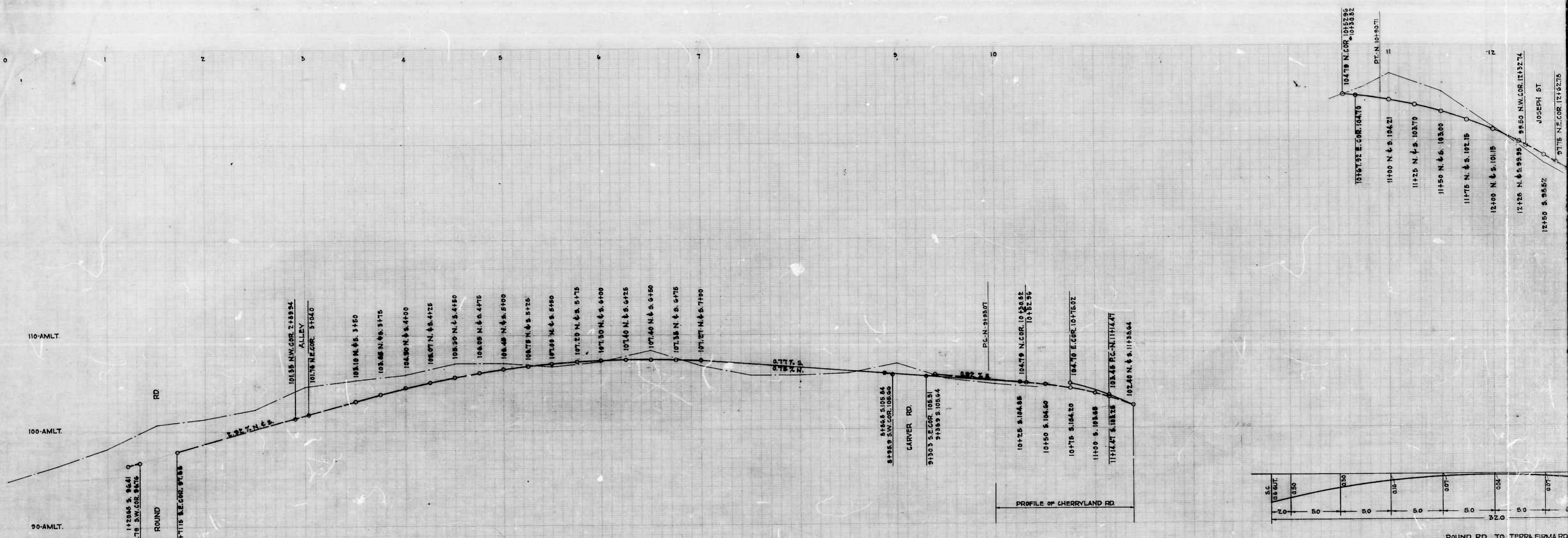


DRAWN BY: J.J. HAYDEN
EXAMINED BY: *Wm. H. Cowell*
ENGINEER IN CHARGE OF DESIGN

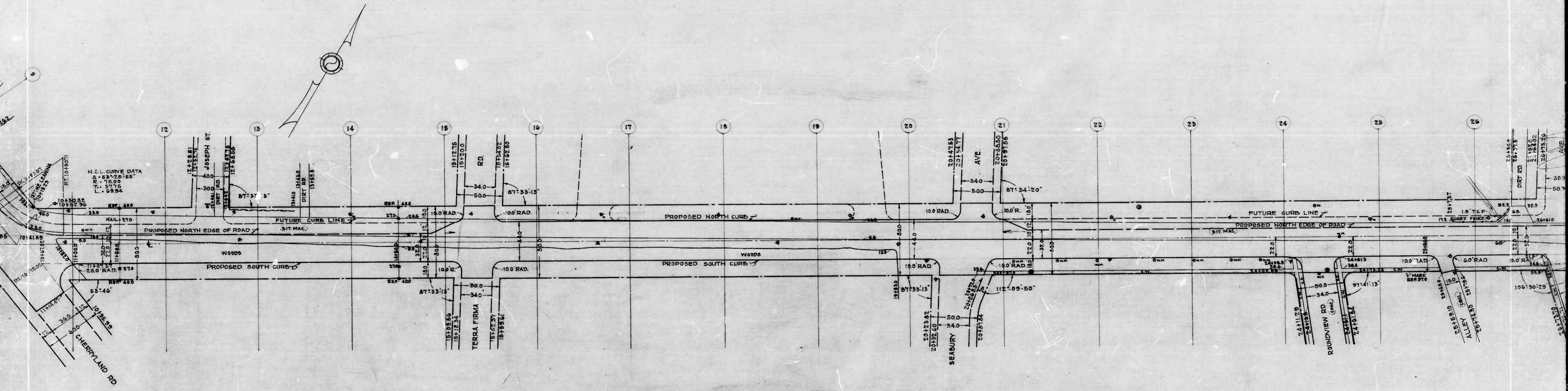
①

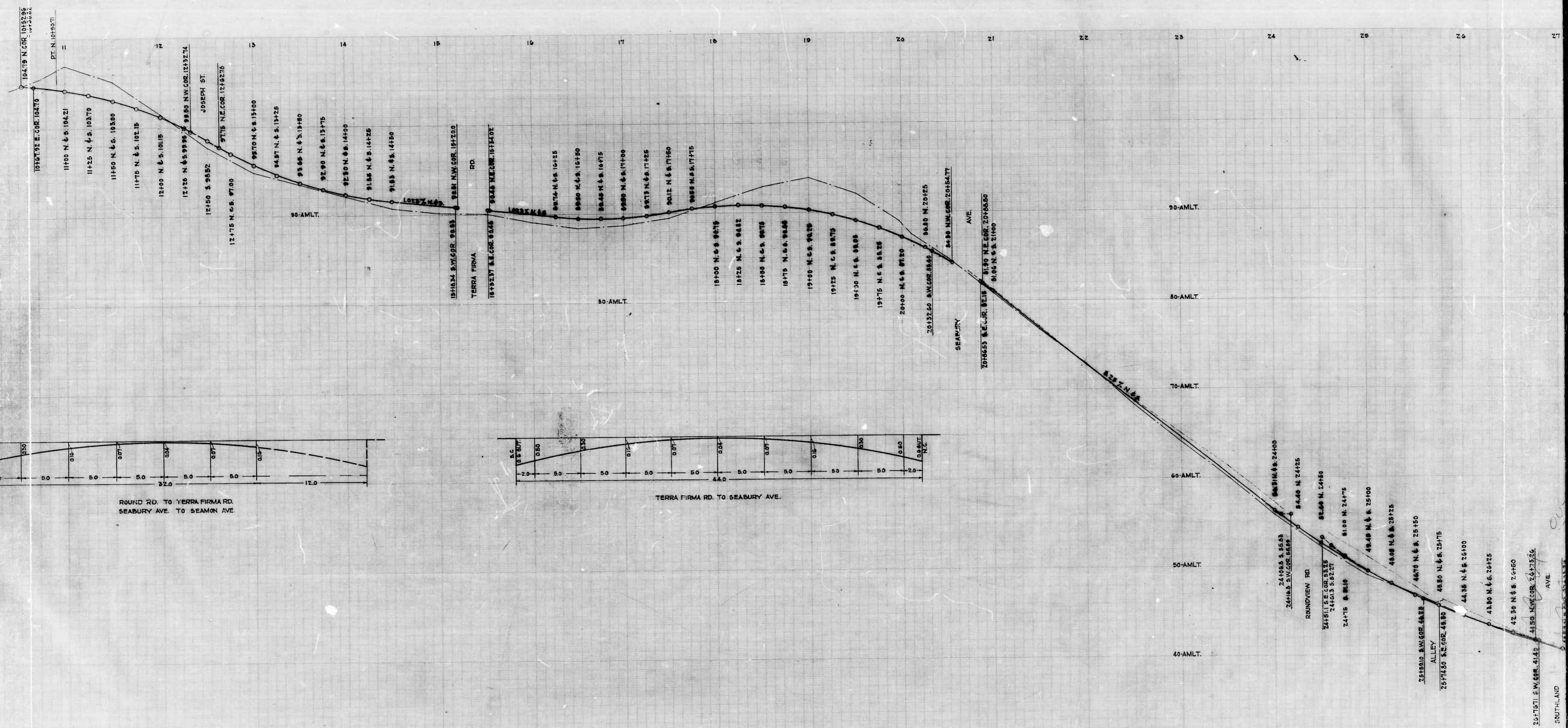


ROUND RD. TO TERRA FIRMA RD.
SEABURY AVE. TO SEAMON AVE.

DRAWN BY J.J. HAYDEN
EXAMINED BY *[Signature]*
MEMBER IN CHARGE OF DRAWING

64



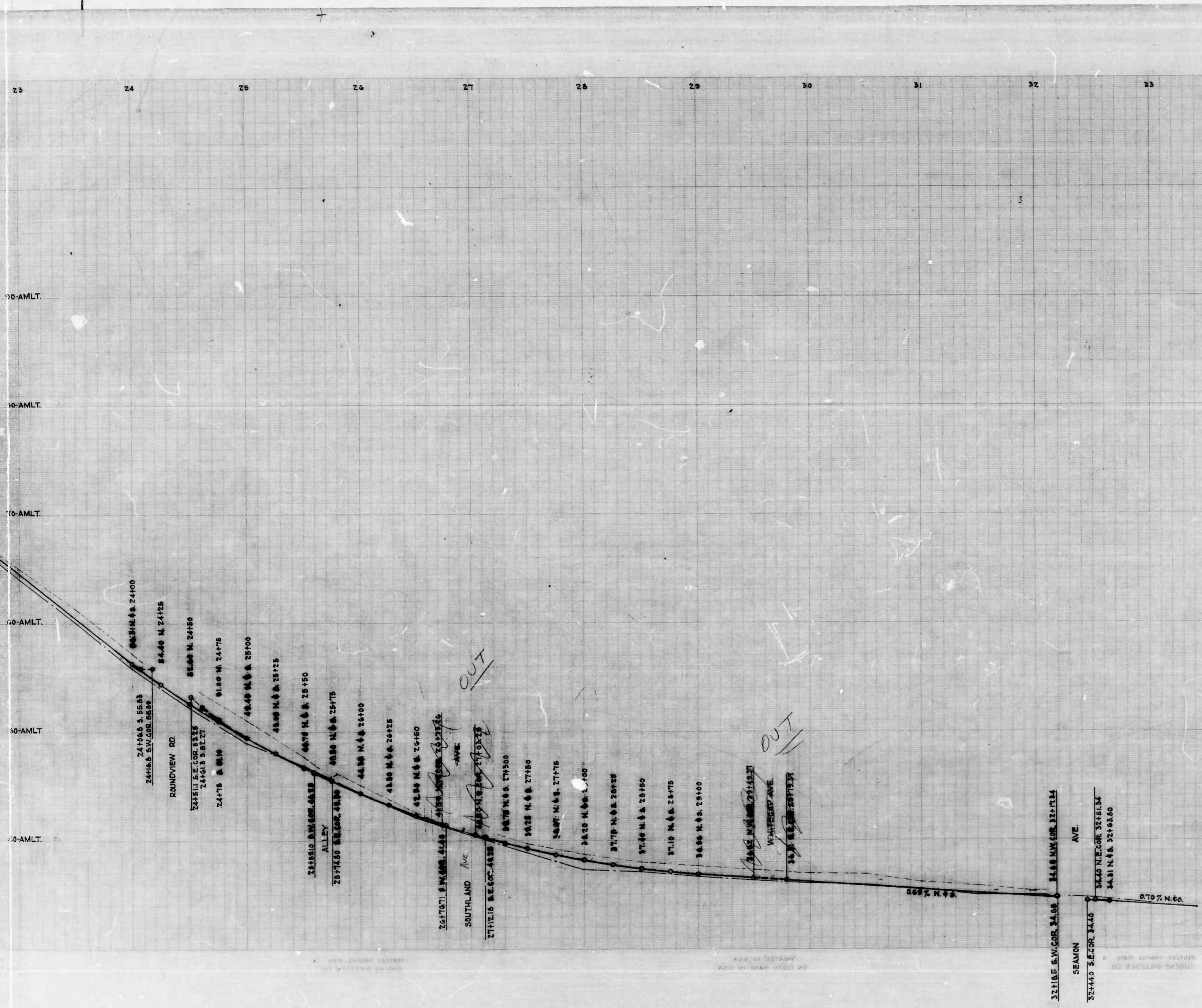


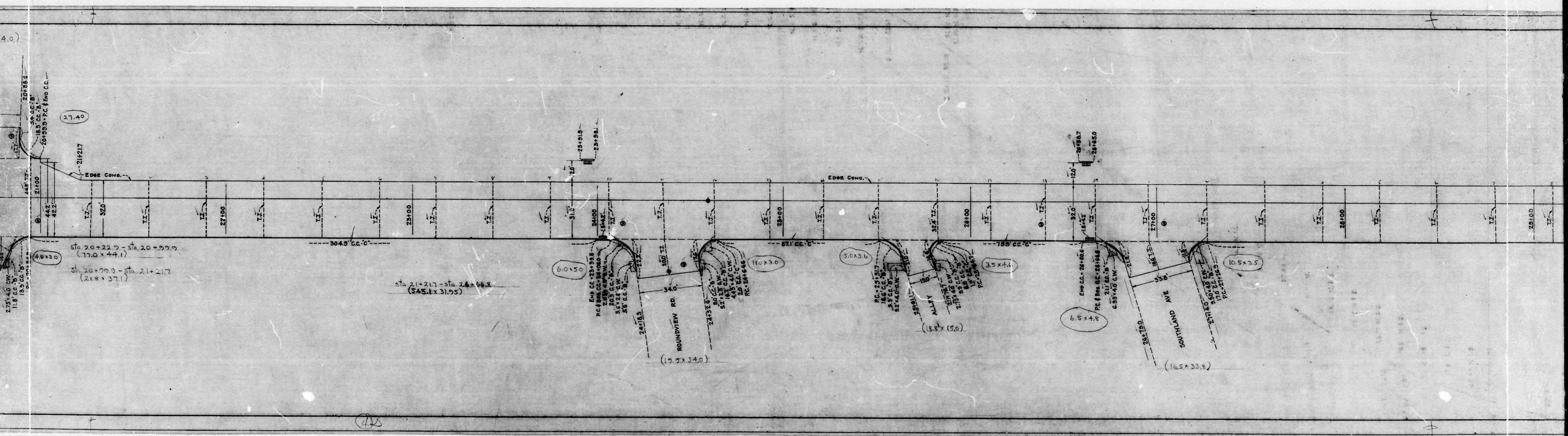
ROUND RD. TO TERRA FIRMA RD.
SEABURY AVE. TO SEAMON AVE.

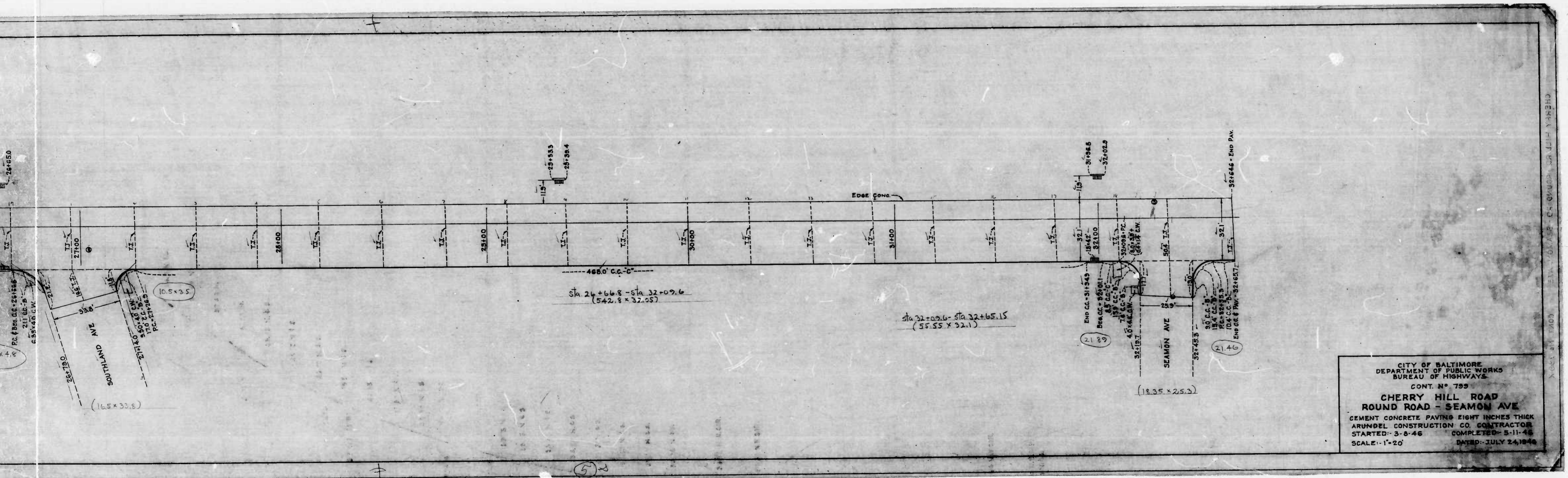
TERRA FIRMA RD. TO SEABURY AVE.

22

SOUTHLAND AVE.







CITY OF BALTIMORE
 DEPARTMENT OF PUBLIC WORKS
 BUREAU OF HIGHWAYS
 CONT. NO. 799
**CHERRY HILL ROAD
 ROUND ROAD - SEAMON AVE**
 CEMENT CONCRETE PAVING EIGHT INCHES THICK
 ARUNDEL CONSTRUCTION CO. CONTRACTOR
 STARTED - 3-8-46 COMPLETED - 5-11-46
 SCALE - 1" = 20' DATED - JULY 24, 1946

CHECKED BY: [illegible] DATE: [illegible]

Sta 9+51.4 - Sta 9+30.3
(7+8.9 x 31.8)

Sta 9+30.3 - Sta 10+36.6
(106.30 x 37.8)

Sta 10+36.6 - Sta 10+74.91
(38.31 x 36.8)

Sta 10+74.91 - Sta 11+15.15
(40.24 x 35.95)

(32.70 x 16.2) - [(0.67 x 7.6) x 0.5 +]

(35.24 x 17.3) - [(0.67 x 10.9) x 3.6]

Sta 10+57.36 - Sta 14+84.9
(427.54 x 31.5)

Sta 14+84.9 - Sta 15+02
(17.1 x 36.8)
Sta 15+02 - Sta 15+04.3
(2.3 x 42.95)

