

(NO) PLAT NO.  
 (NO) HOUSE OR DEV. LOT NO.  
 (NO) APPEAL TAX COURT LOT NO.  
 WARD - 10  
 SECTION - 9  
 BLOCK 1237

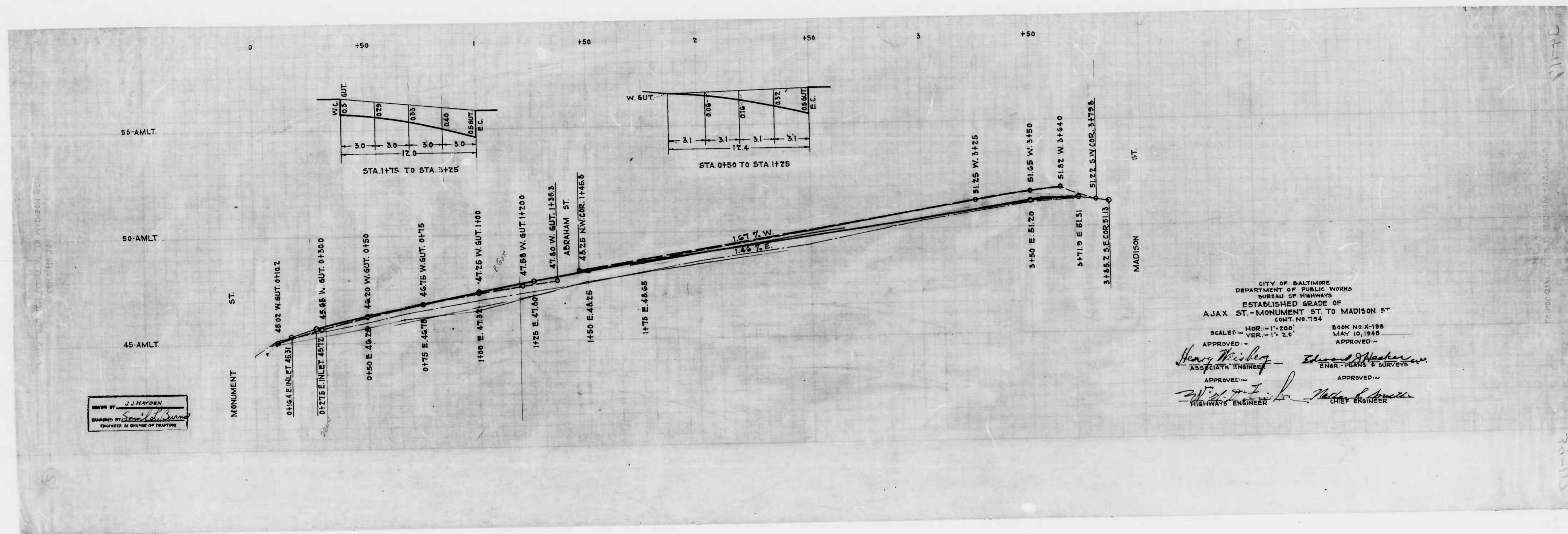
FILED May 24-1944  
 BUREAU OF HIGHWAYS  
 PER [Signature]

CITY OF BALTIMORE  
 DEPARTMENT OF PUBLIC WORKS  
 BUREAU OF HIGHWAYS  
 ASSESSMENT PLAT NO. 574-A  
 AJAX ST. - MONUMENT ST. TO MADISON ST.  
 CONT. NO. 794

SCALE - 1" = 20.0'  
 APPROVED - [Signature]  
 ASSOCIATE ENGINEER  
 APPROVED - [Signature]  
 HIGHWAYS ENGINEER

BOOK NO. X-195  
 APPROVED - [Signature]  
 ENGR. - PLANS & SURVEYS  
 APPROVED - [Signature]  
 CHIEF ENGINEER

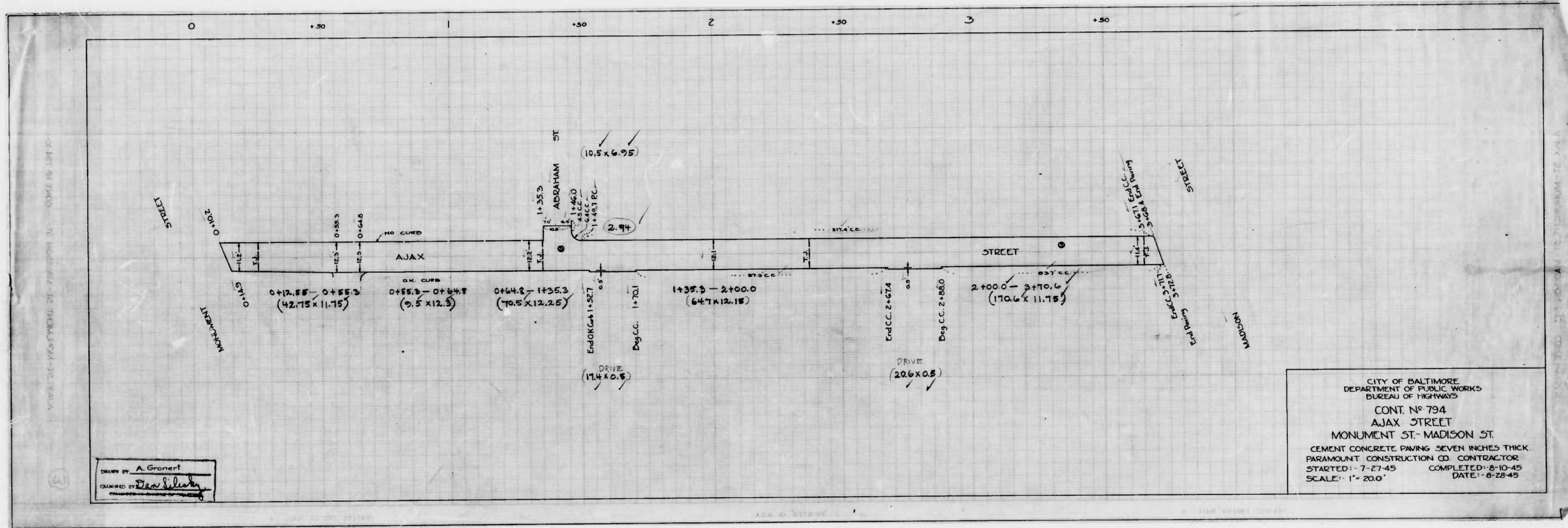
DRAWN BY J.J. HAYDEN  
[Signature]  
 ENGINEER IN CHARGE OF DRAFTING



DRAWN BY J.J. HAYDEN  
 CHECKED BY Samuel J. ...  
 ENGINEER IN CHARGE OF DRAFTING

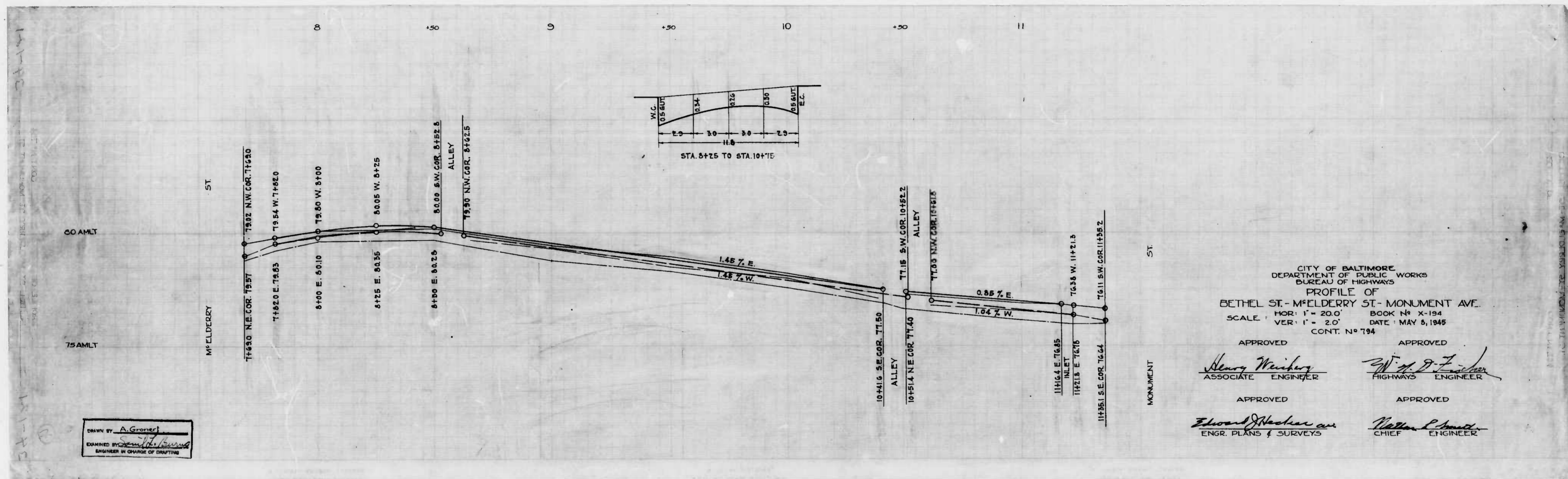
CITY OF BALTIMORE  
 DEPARTMENT OF PUBLIC WORKS  
 BUREAU OF HIGHWAYS  
 ESTABLISHED GRADE OF  
 AJAX ST. - MONUMENT ST. TO MADISON ST.  
 CONT. NO. 104  
 SCALE - HOR. - 1" = 200'  
 VER. - 1" = 20'  
 BOOK NO. X-198  
 MAY 10, 1948  
 APPROVED - Henry Weisberg ASSOCIATE ENGINEER  
 APPROVED - Edward J. ... ENGINEER - PLANS & SURVEYS  
 APPROVED - Walter ... HIGHWAYS ENGINEER  
 APPROVED - John ... CHIEF ENGINEER

111-120  
 111-120



DRAWN BY A. Gronert  
 EXAMINED BY [Signature]

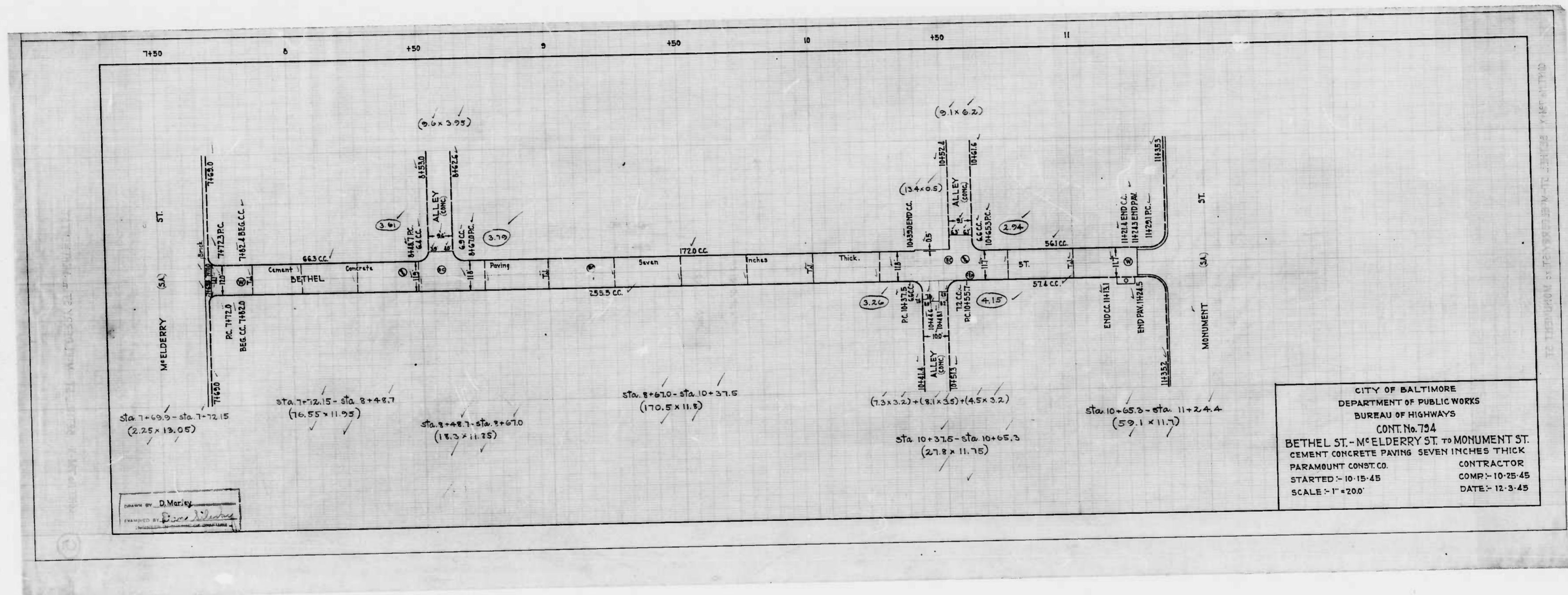
CITY OF BALTIMORE  
 DEPARTMENT OF PUBLIC WORKS  
 BUREAU OF HIGHWAYS  
 CONT. NO. 794  
 AJAX STREET  
 MONUMENT ST. - MADISON ST.  
 CEMENT CONCRETE PAVING SEVEN INCHES THICK  
 PARAMOUNT CONSTRUCTION CO. CONTRACTOR  
 STARTED - 7-27-45 COMPLETED - 8-10-45  
 SCALE - 1" = 20.0' DATE - 8-28-45



DRAWN BY A. Green  
 CHECKED BY [Signature]  
 ENGINEER IN CHARGE OF DRAFTING

CITY OF BALTIMORE  
 DEPARTMENT OF PUBLIC WORKS  
 BUREAU OF HIGHWAYS  
 PROFILE OF  
 BETHEL ST - McELDERRY ST - MONUMENT AVE.  
 SCALE: HOR: 1" = 20.0' BOOK No X-194  
 VER: 1" = 2.0' DATE: MAY 5, 1945  
 CONT. No 794

APPROVED [Signature] ASSOCIATE ENGINEER  
 APPROVED [Signature] HIGHWAYS ENGINEER  
 APPROVED [Signature] ENGR. PLANS & SURVEYS  
 APPROVED [Signature] CHIEF ENGINEER



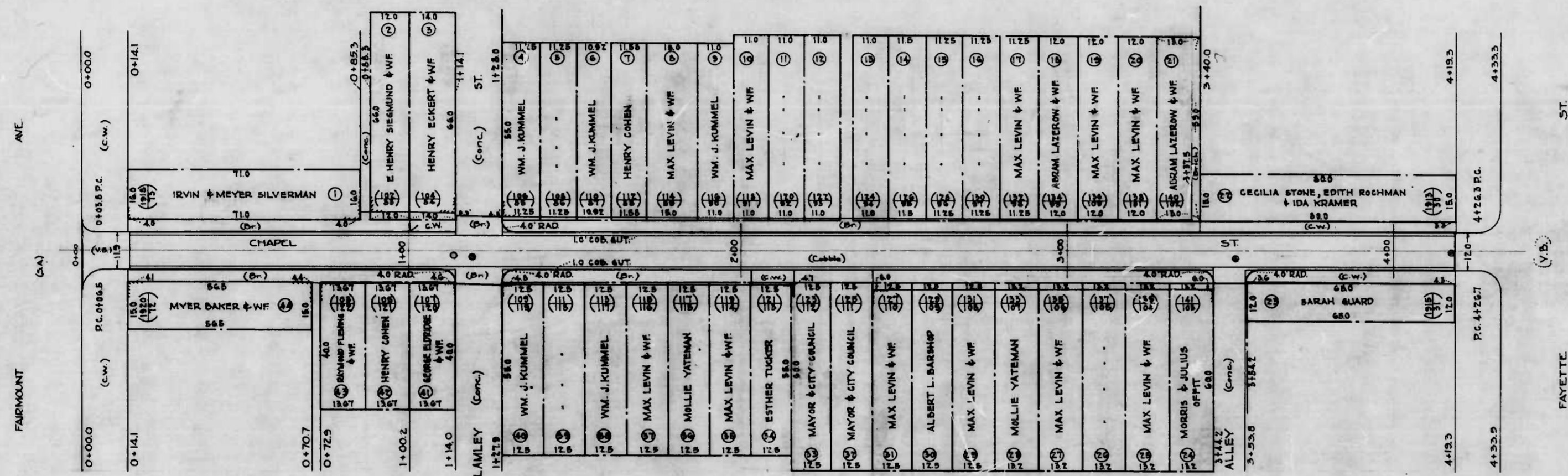
DESIGNED BY D. Marley  
 DRAWN BY [Signature]

CITY OF BALTIMORE  
 DEPARTMENT OF PUBLIC WORKS  
 BUREAU OF HIGHWAYS  
 CONT. No. 794  
 BETHEL ST. - McELDERRY ST. TO MONUMENT ST.  
 CEMENT CONCRETE PAVING SEVEN INCHES THICK  
 PARAMOUNT CONST. CO. CONTRACTOR  
 STARTED - 10-15-45 COMP. - 10-25-45  
 SCALE - 1" = 200' DATE - 12-3-45

WARD - 6

SECTION - 11

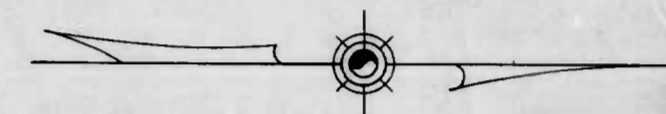
BLOCK - 1702



WARD - 6

SECTION - 11

BLOCK - 1702



PLAT NO.  
 HOUSE OR DEV. LOT NO.  
 APPEAL TAX COURT LOT NO.  
 WARD - 6  
 SECTION - 11  
 BLOCK - 1702

FILED May 24 - 1945  
 BUREAU OF HIGHWAYS  
 PER J. H. [Signature]

CITY OF BALTIMORE  
 DEPARTMENT OF PUBLIC WORKS  
 BUREAU OF HIGHWAYS

ASSESSMENT PLAT NO. 579-A  
 CHAPEL ST. FAIRMOUNT AVE. - FAYETTE ST.  
 SCALE: 1" = 20.0'  
 CONT. NO. 194  
 BOOK NO. X-195  
 DATE: MAY 8, 1945

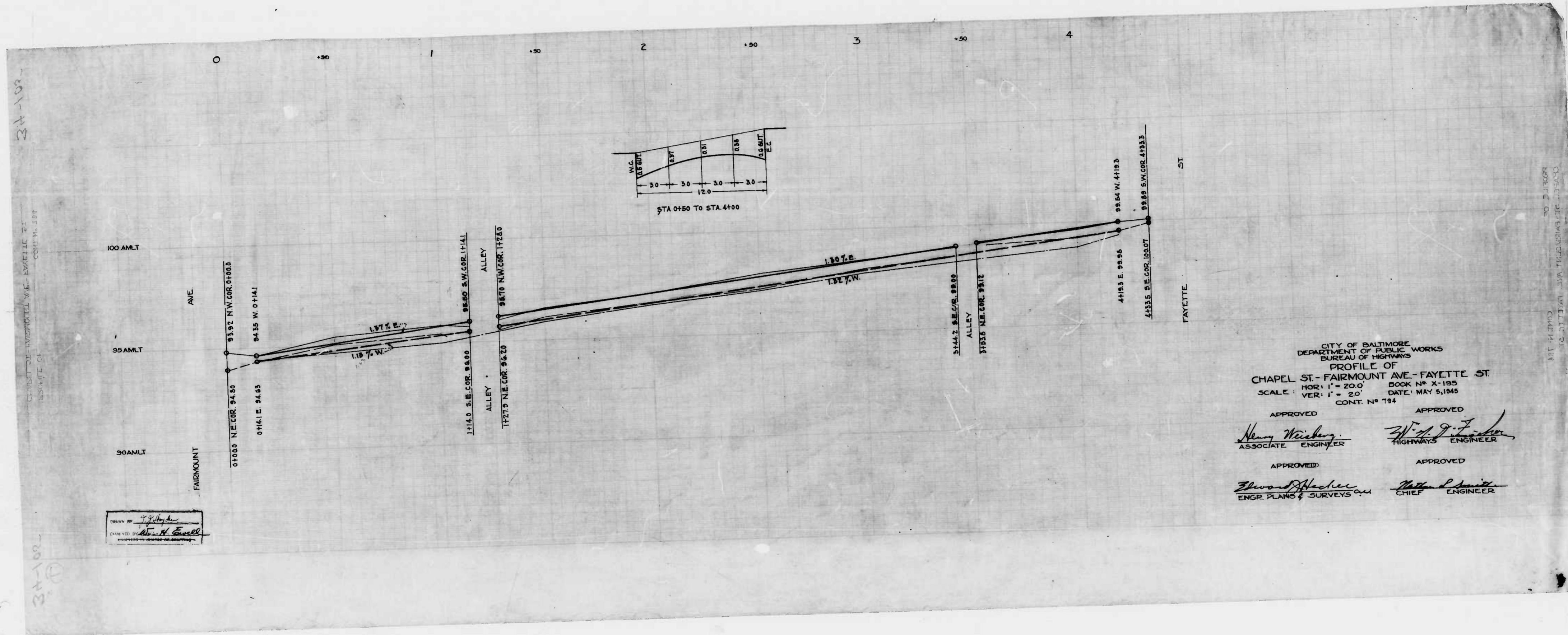
APPROVED  
 Henry Weisberg  
 ASSOCIATE ENGINEER

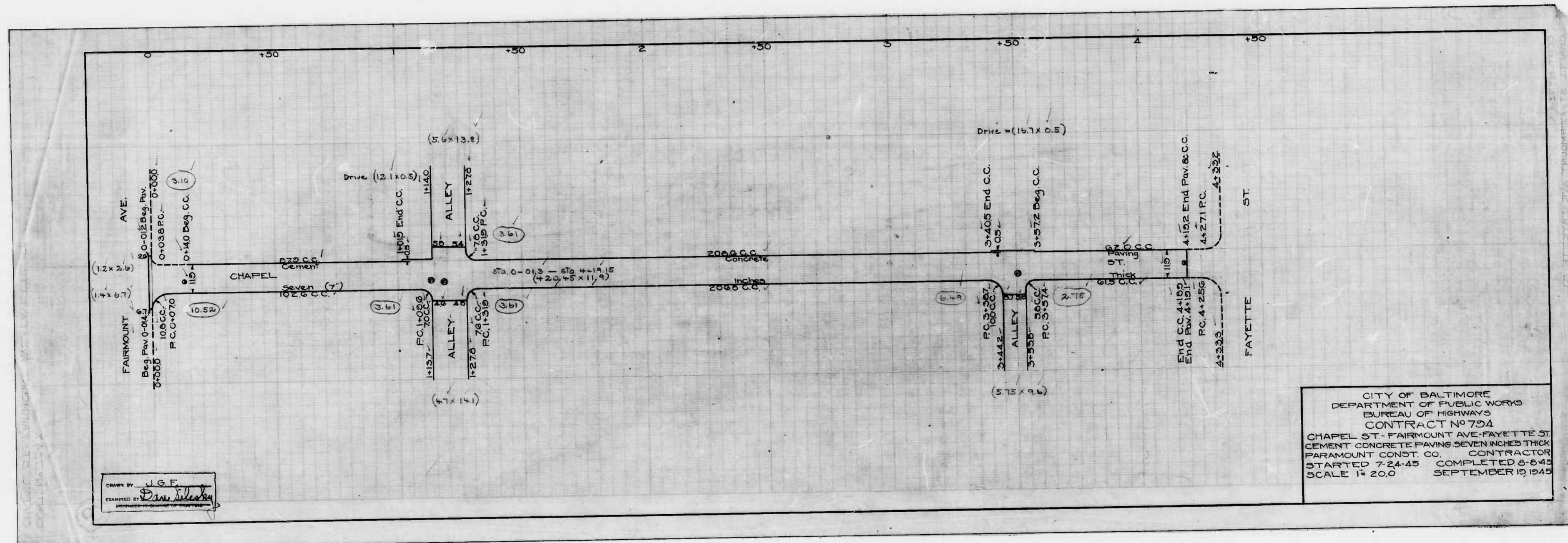
APPROVED  
 W. J. [Signature]  
 HIGHWAYS ENGINEER

APPROVED  
 Edward [Signature]  
 ENGR. PLANS & SURVEYS

APPROVED  
 [Signature]  
 CHIEF ENGINEER

[Signature]

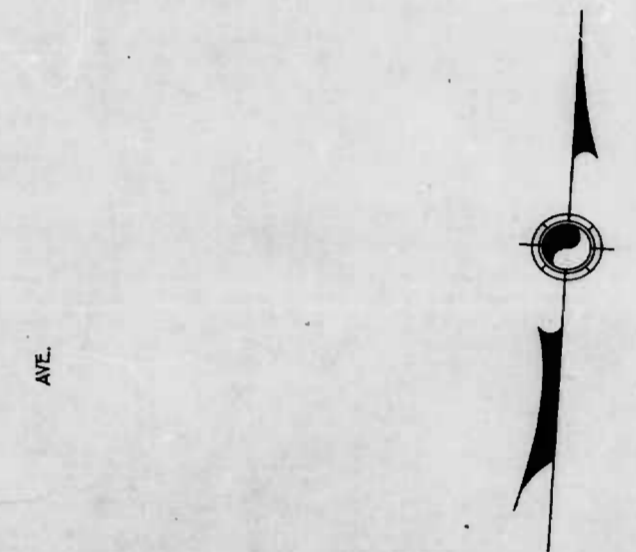
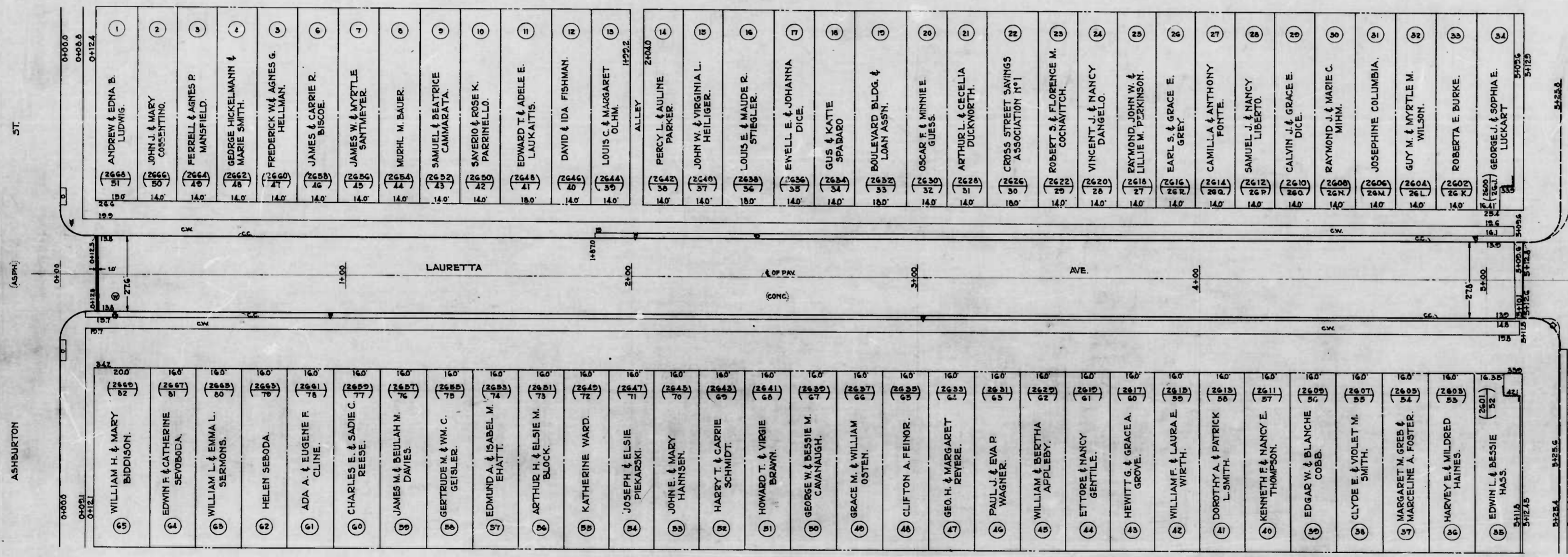




DRAWN BY *J.G.F.*  
 EXAMINED BY *Dave Slesky*

CITY OF BALTIMORE  
 DEPARTMENT OF PUBLIC WORKS  
 BUREAU OF HIGHWAYS  
 CONTRACT NO 794  
 CHAPEL ST - FAIRMOUNT AVE - FAYETTE ST  
 CEMENT CONCRETE PAVING SEVEN INCHES THICK  
 PARAMOUNT CONST. CO. CONTRACTOR  
 STARTED 7-24-45 COMPLETED 8-8-45  
 SCALE 1" = 20.0 SEPTEMBER 13 1945





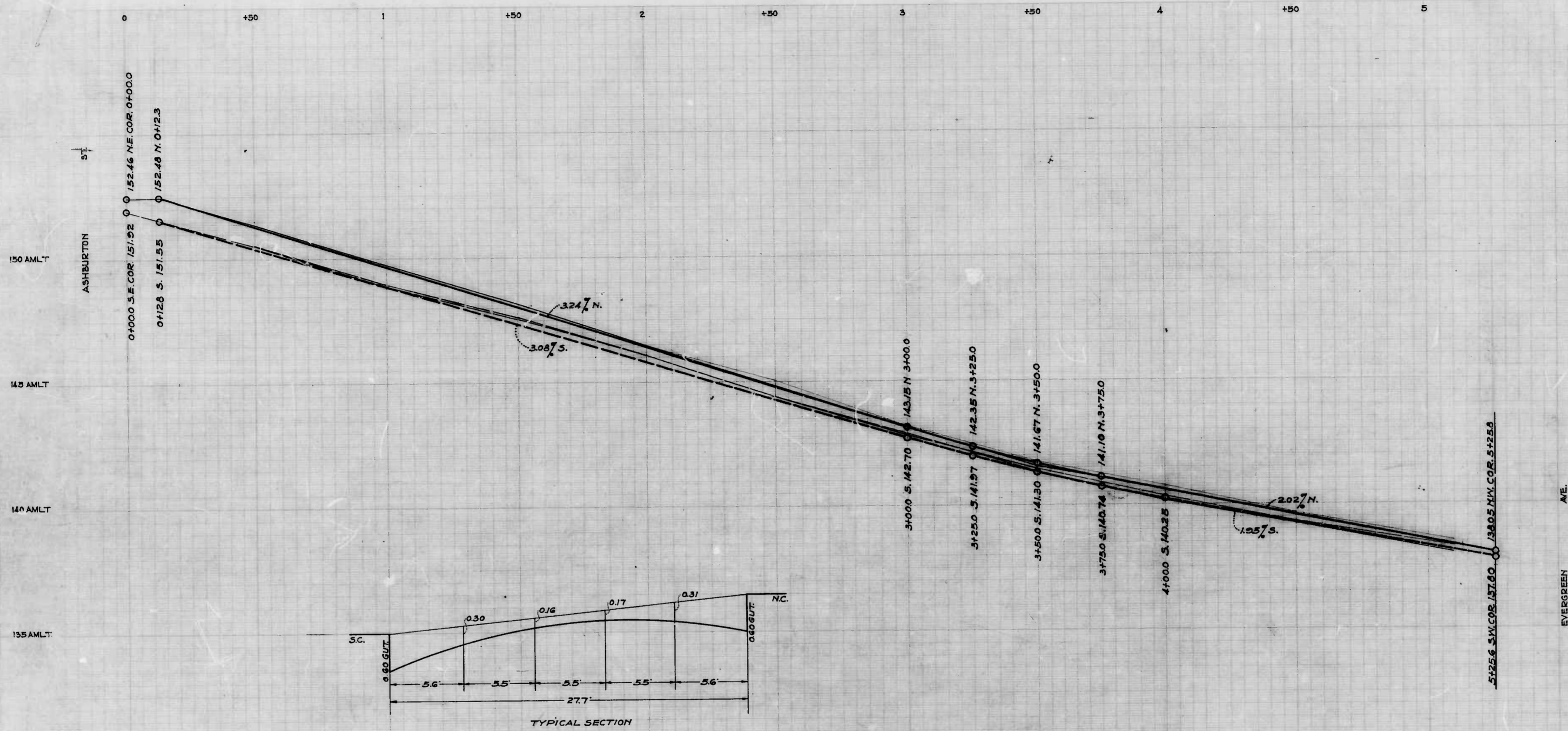
PLAT NO.  
 HOUSE OR DEV. LOT NO.  
 APPEAL TAX COURT LOT NO.  
 BLOCK 2818 B  
 WARD 20  
 SECTION 2

Filed May 24-1945  
 BUREAU OF HIGHWAYS  
 PER J. J. App. 10

CITY OF BALTIMORE  
 DEPARTMENT OF PUBLIC WORKS  
 BUREAU OF HIGHWAYS  
 ASSESSMENT PLAT NO. 569-A  
 LAURETTA AVE.-ASHBURTON ST. TO EVERGREEN AVE.  
 CONT. NO. 794

SCALE: 1"=20' BOOK NO. X-204 APRIL 2, 1945  
 APPROVED: *Henry Weiskopf* ASSOCIATE ENGINEER  
 APPROVED: *Wood H. Maden* ENGR. - PLANS & SURVEYS  
 APPROVED: *W. J. F. ...* HIGHWAYS ENGINEER  
 APPROVED: *Nathan ...* CHIEF ENGINEER

D. Merley  
*Wm. H. Bull*



CITY OF BALTIMORE  
 DEPARTMENT OF PUBLIC WORKS  
 BUREAU OF HIGHWAYS

PROFILE OF  
 LAURETTA AVE. - ASHE STON ST. TO EVERGREEN AVE.  
 SCALE: HOR: 1" = 20.0' BOOK NO. X-204  
 VER: 1" = 2.0' CONT. NO. 794 DATE: APRIL 16 1945

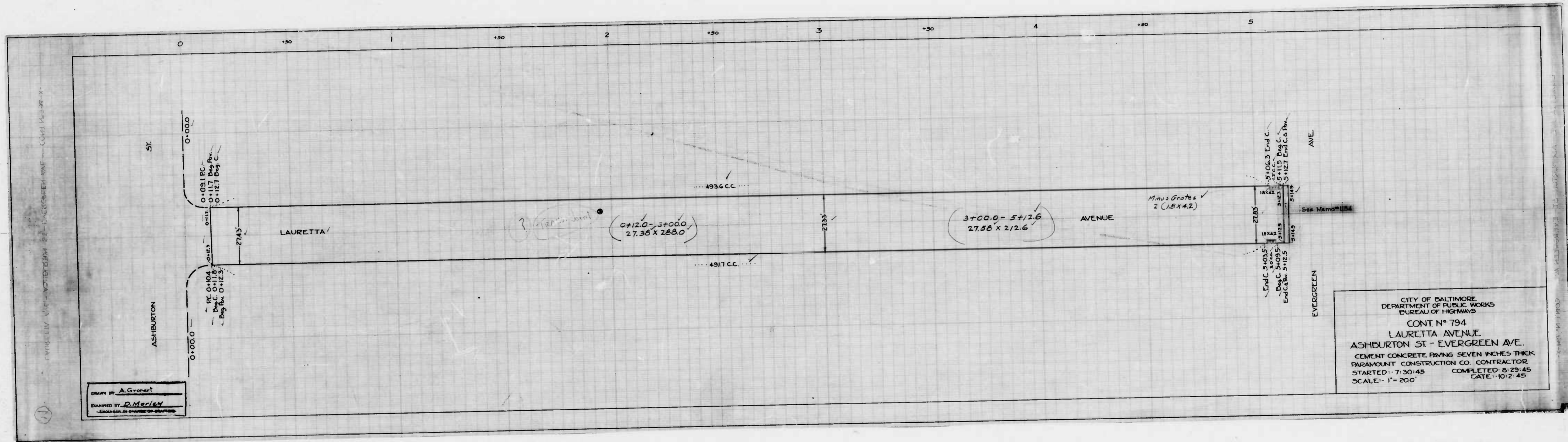
APPROVED  
*Henry Wisberg*  
 ASSOCIATE ENGINEER.

APPROVED  
*W. J. D. I.*  
 HIGHWAYS ENGINEER.

APPROVED  
*Edward J. Fletcher*  
 ENGR. PLANS & SURVEYS.

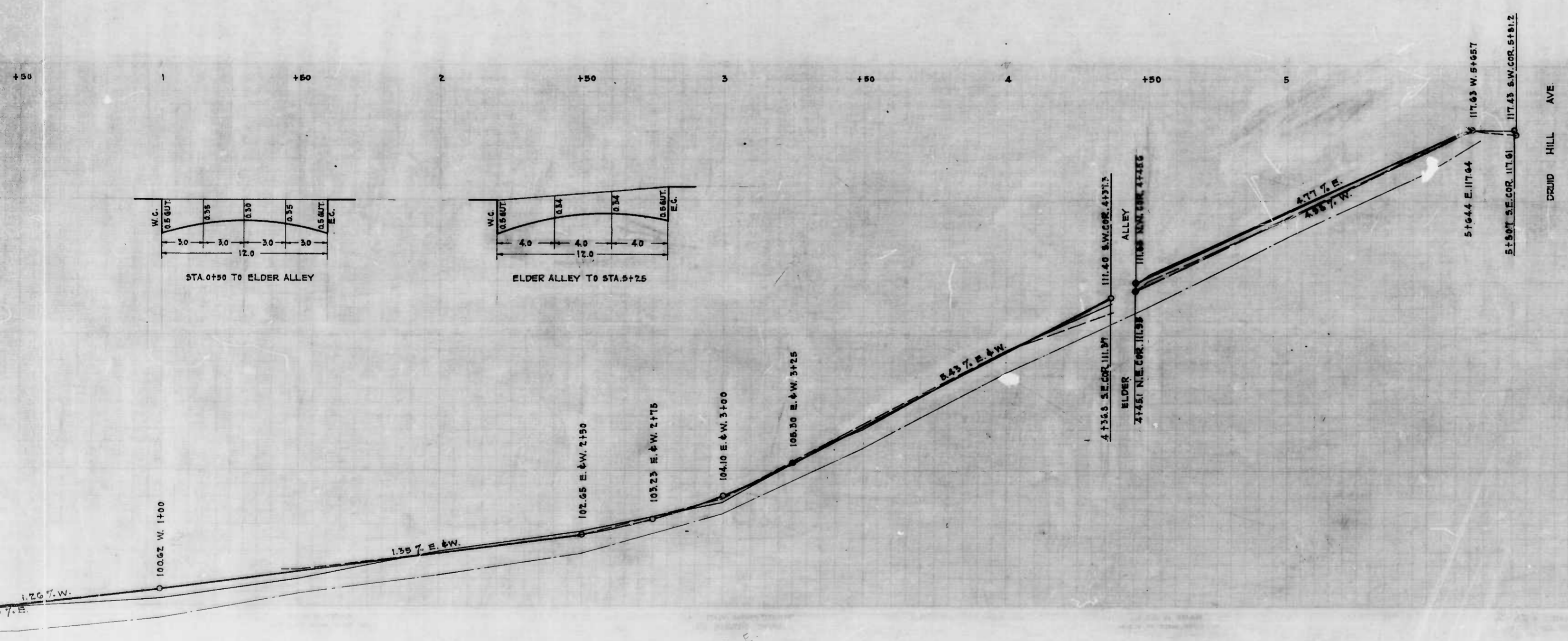
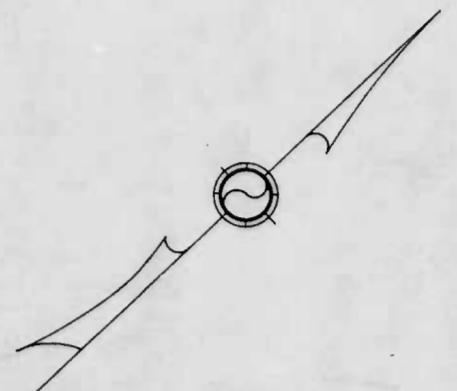
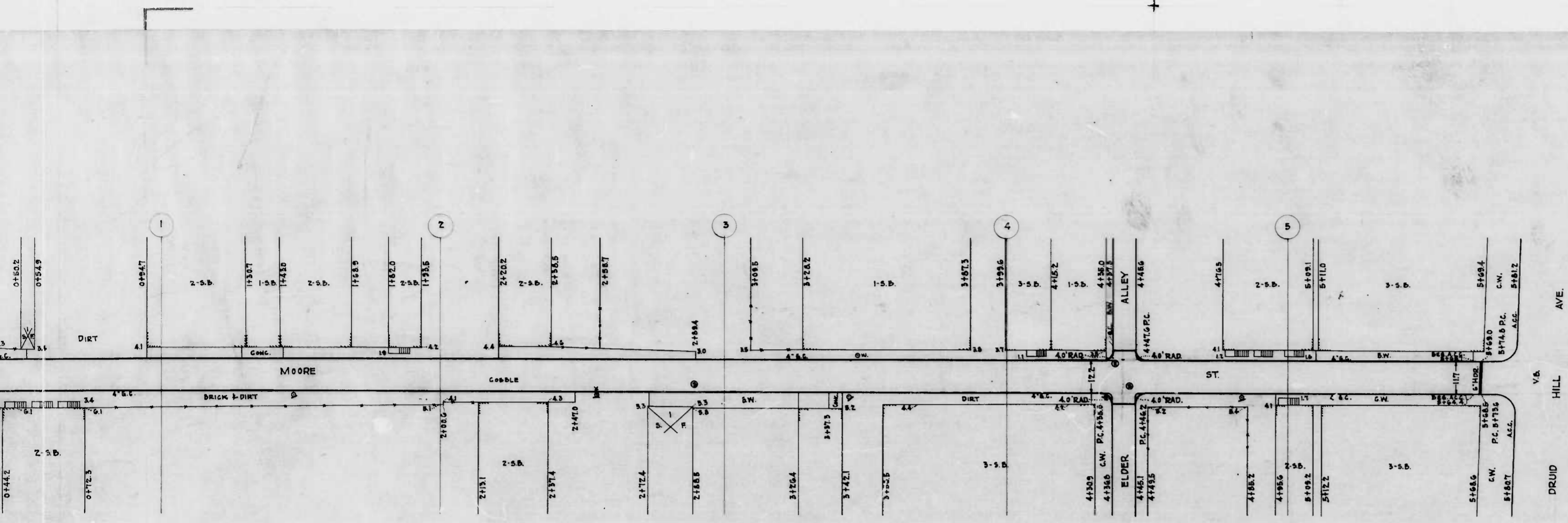
APPROVED  
*William L. Smith*  
 CHIEF ENGINEER.

DESIGNED BY: D. Mackay  
 CHECKED BY: Wm. A. Ewell



DRAWN BY A. Grewert  
 CHECKED BY D. Marley  
 ENGINEER IN CHARGE OF DISTRICT

CITY OF BALTIMORE  
 DEPARTMENT OF PUBLIC WORKS  
 BUREAU OF HIGHWAYS  
 CONT. N° 794  
 LAURETTA AVENUE  
 ASHBURTON ST - EVERGREEN AVE.  
 CEMENT CONCRETE PAVING SEVEN INCHES THICK  
 PARAMOUNT CONSTRUCTION CO. CONTRACTOR  
 STARTED - 7-30-45 COMPLETED 8-23-45  
 SCALE - 1" = 200'

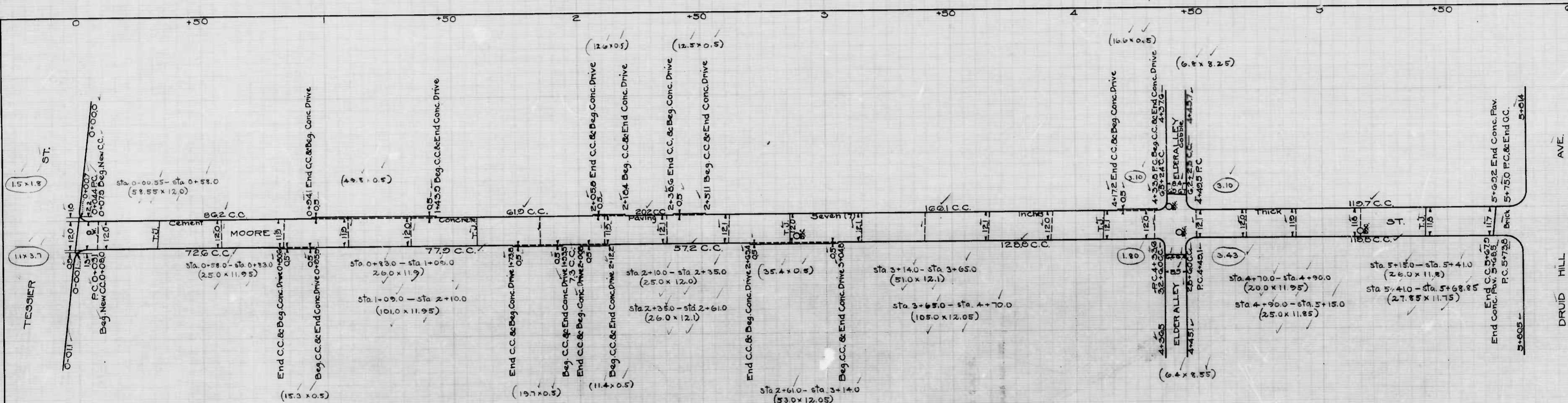


CITY OF BALTIMORE  
DEPARTMENT OF PUBLIC WORKS  
BUREAU OF HIGHWAYS  
PLAN & PROFILE  
MOORE ST. - TESSIER ST. TO DRUID HILL AVE.  
SHEET NO. 124  
SCALE: PLAN - 1"=20'      BOOK N° X 195  
          HOR. - 1"=200'      MAY. 7, 1945  
          PROFILE - VER. - 1"=20'

APPROVED: *Henry Winley* ASSOCIATE ENGINEER  
APPROVED: *Wm. J. Fisher* HIGHWAYS ENGINEER  
APPROVED: *James J. Haden* ENGR. PLANS & SURVEYS  
APPROVED: *Wm. J. Haden* CHIEF ENGINEER

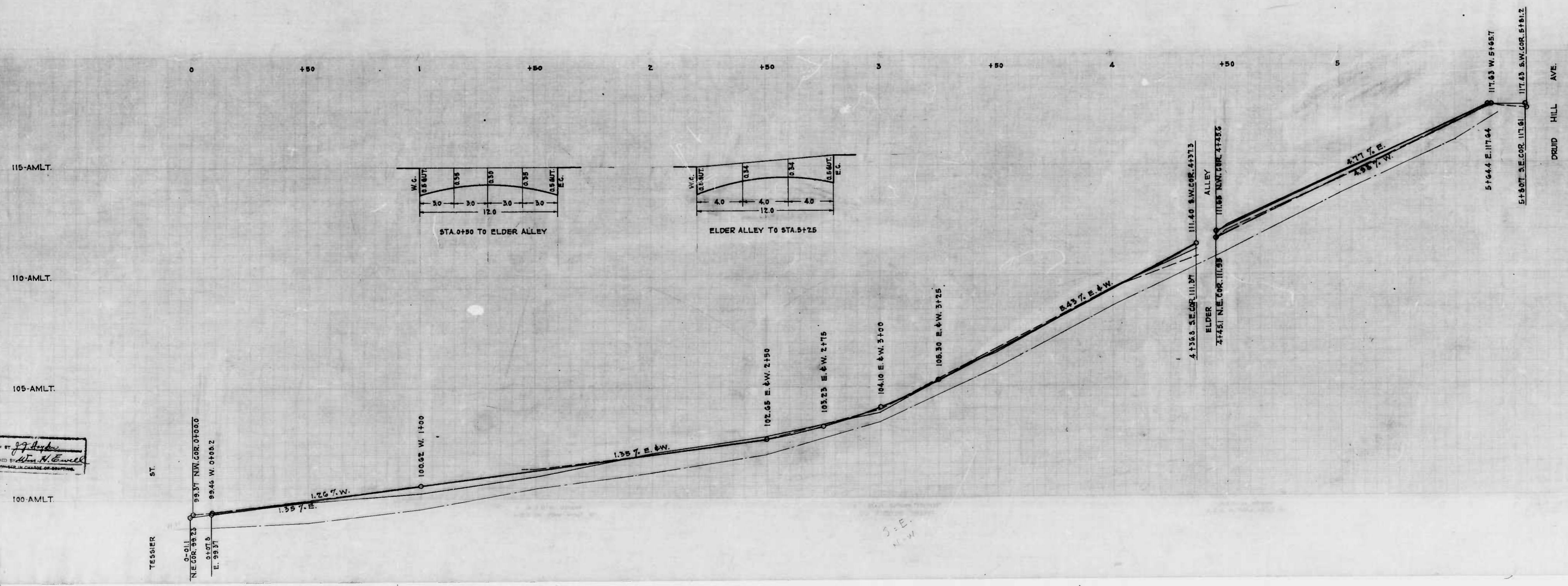
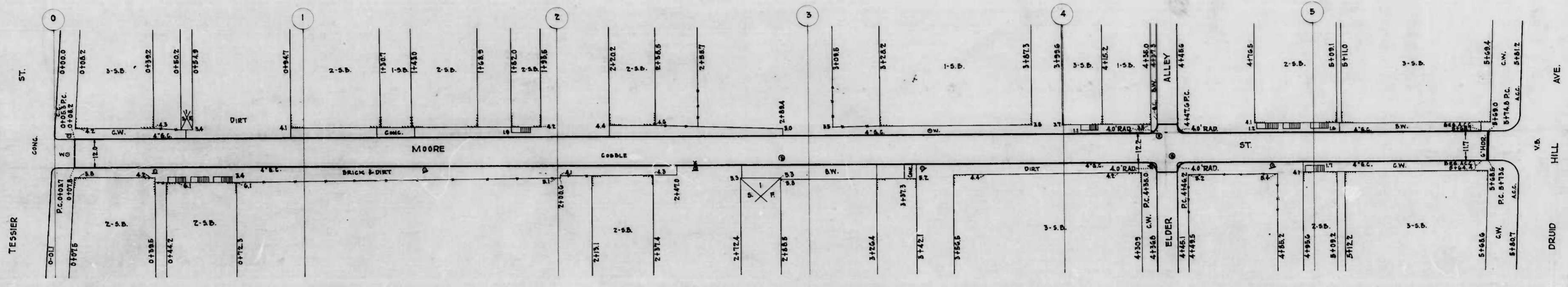
①

②



DRAWN BY J.G.F.  
 EXAMINED BY [Signature]  
 APPROVED BY [Signature]

CITY OF BALTIMORE  
 DEPARTMENT OF PUBLICWORKS  
 BUREAU OF HIGHWAYS  
 CONTRACT NO 794  
 MOORE ST. - TESSIER ST. - DRUID HILL AVE.  
 Cement Concrete Paving Seven (7) Inches Thick  
 PARAMOUNT CONSTR. CO. CONTRACTORS  
 Started 10-20-45 Completed 11-6-45  
 SCALE 1" = 200 DECEMBER 1945

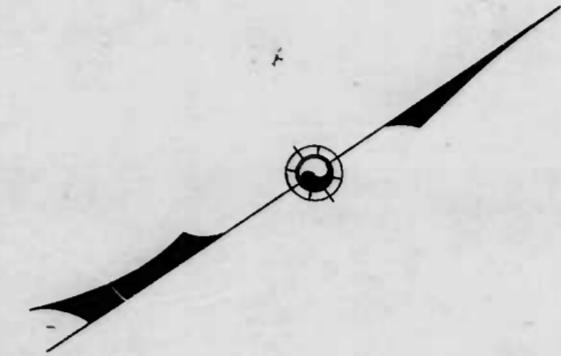
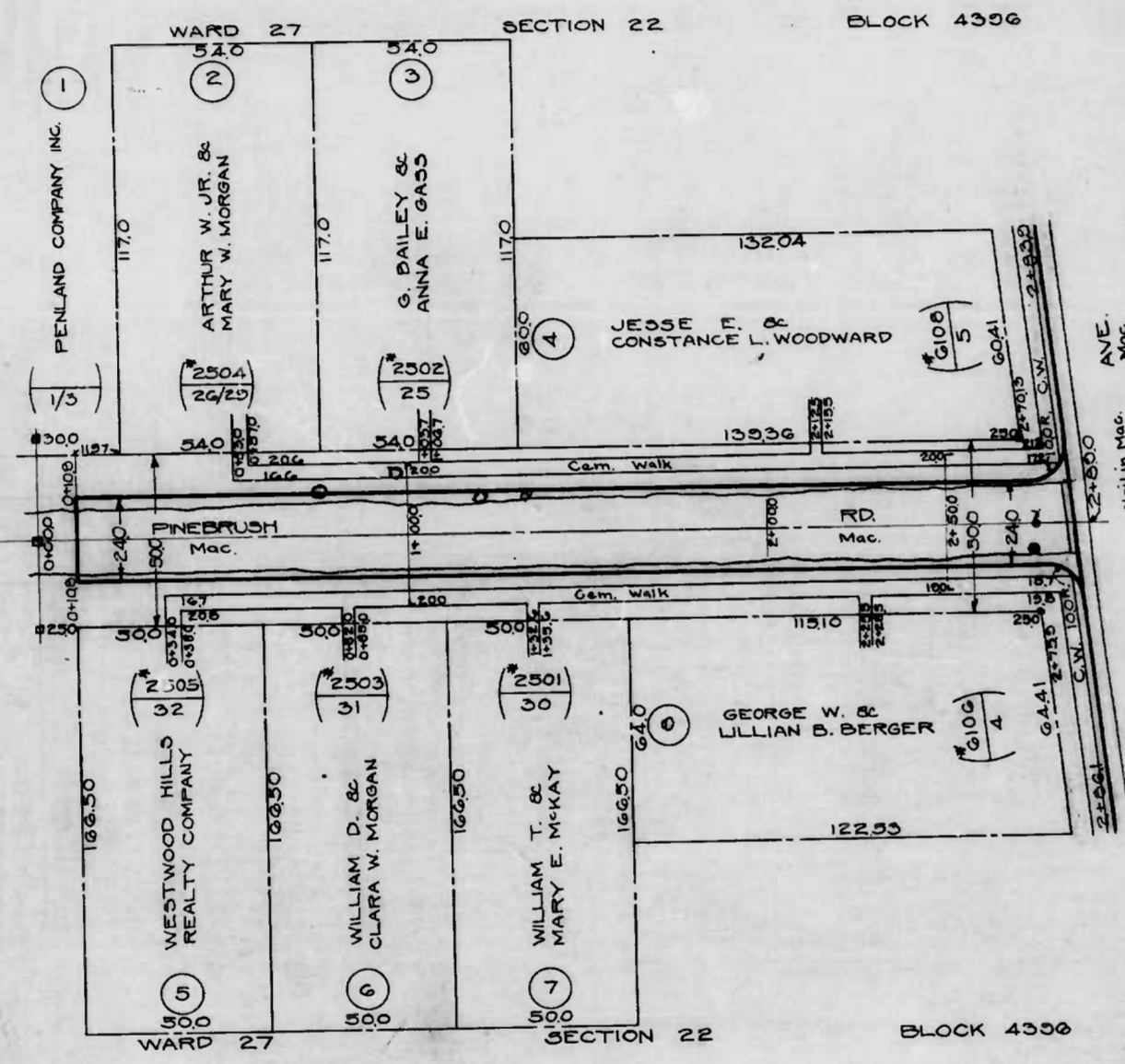


DRAWN BY *J.F. Hayden*  
 CHECKED BY *Wm. H. Emwell*  
 SUPERVISOR IN CHARGE OF DRAWING

CITY OF BALTIMORE  
 DEPARTMENT OF PUBLIC WORKS  
 BUREAU OF HIGHWAYS  
 PLAN & PROFILE  
 MOORE ST. - TESSIER ST. TO DRUID HILL AVE.  
 COST NOTES  
 SCALES: PLAN - 1" = 20.0'  
 PROFILE - 1" = 20.0'  
 VER. - 1" = 5.0'

APPROVED - *Henry Weisley*  
 ASSOCIATE ENGINEER

APPROVED - *Wm. H. Emwell*  
 HIGHWAYS ENGINEER



(No) PLAT NUMBER  
 (20) HOUSE OR DEVELOPMENT LOT NUMBER  
 APPEAL TAX COURT LOT NUMBER

WARD 27  
 SECTION 22  
 BLOCK 4556

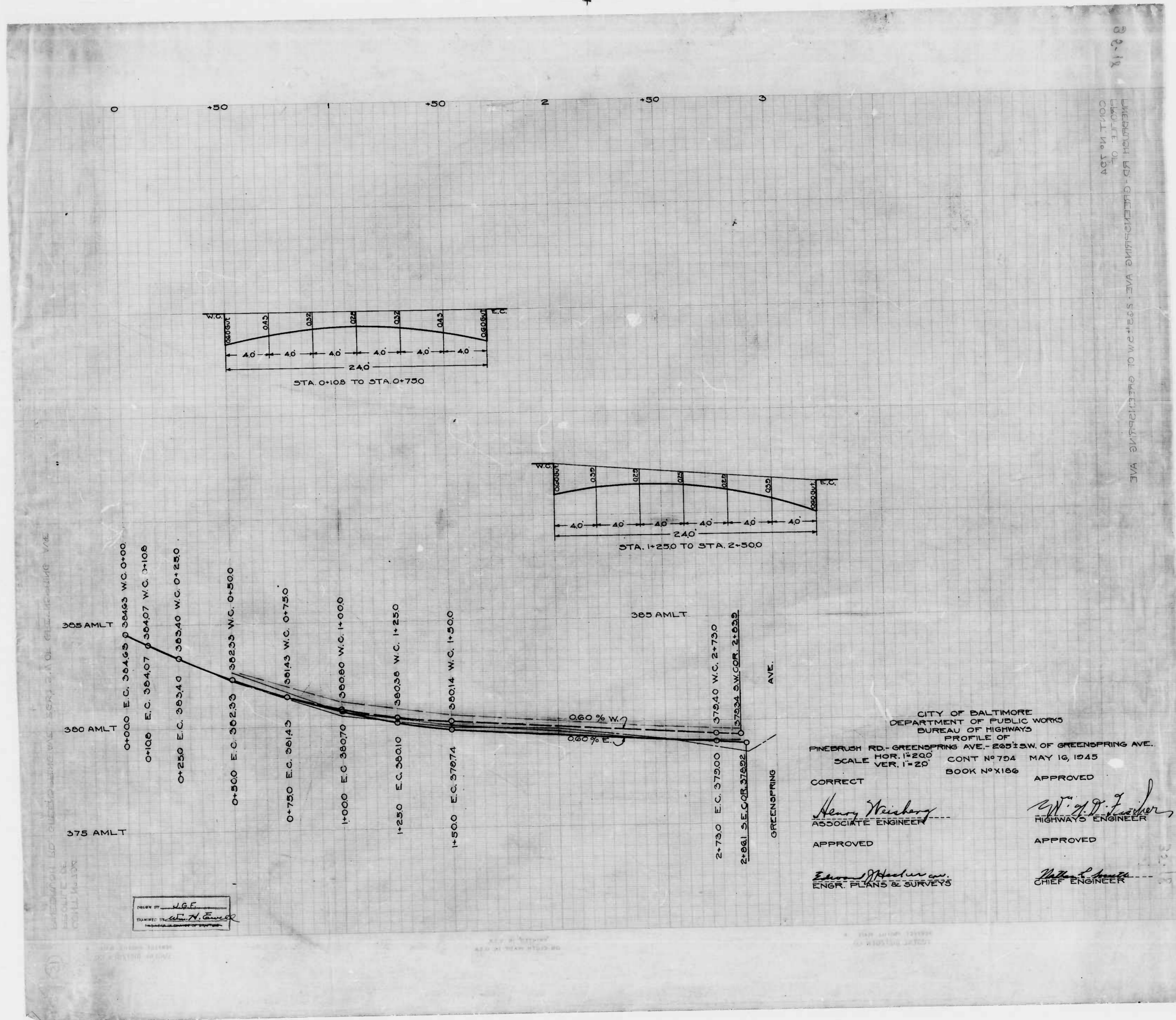
Filed May 24-1945  
 BUREAU OF HIGHWAYS  
 PER *J. Phillip*

CITY OF BALTIMORE  
 DEPARTMENT OF PUBLIC WORKS  
 BUREAU OF HIGHWAYS  
 ASSESSMENT PLAT No 578-A  
 PINEBRUSH RD - GREENSPRING AVE - 265 1/2 S.W. OF GREENSPRING AVE.  
 SCALE 1"=300' BOOK No 186 MAY 11, 1945  
 CONT. No 794

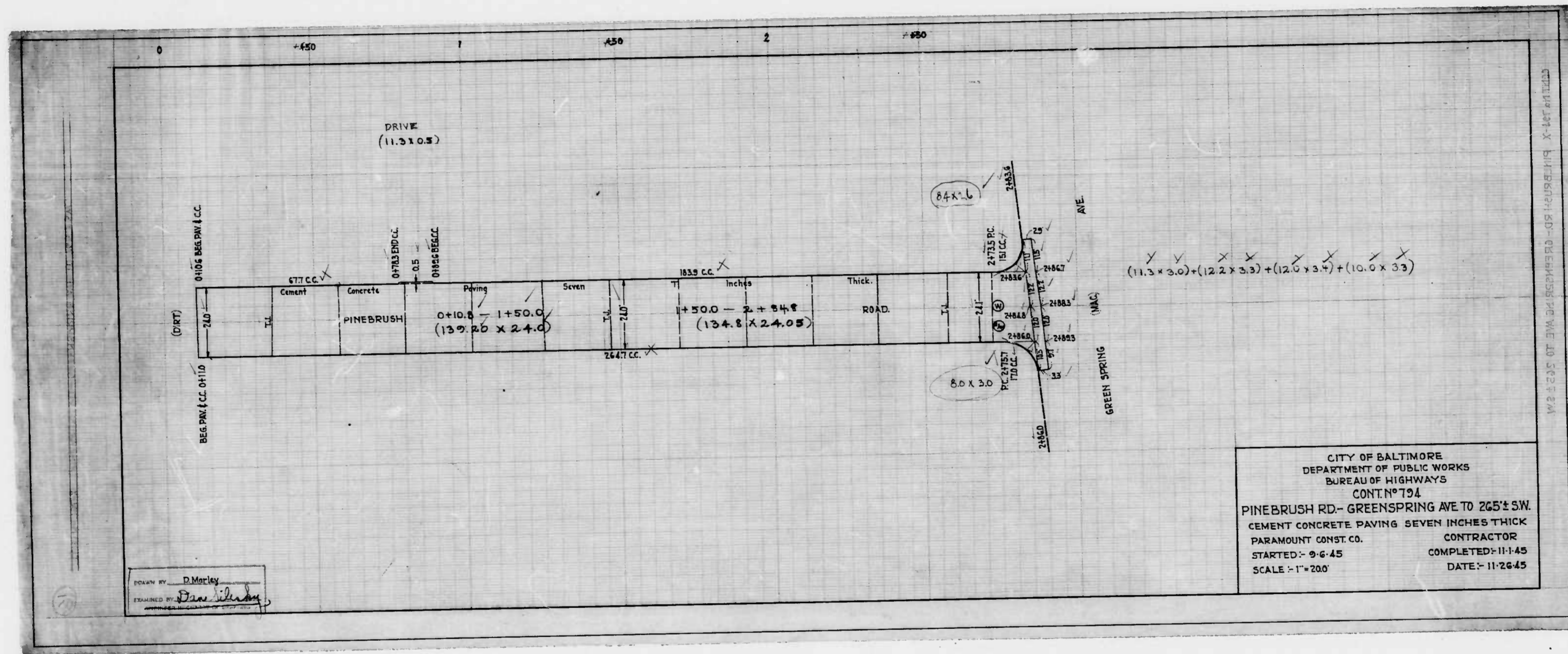
CORRECT APPROVED  
*Henry Winkler* *W. H. J. Fisher*  
 ASSOCIATE ENGINEER HIGHWAYS ENGINEER  
 APPROVED APPROVED  
*Edward J. Hecker* *William L. Smith*  
 ENGR. PLANS & SURVEYS CHIEF ENGINEER

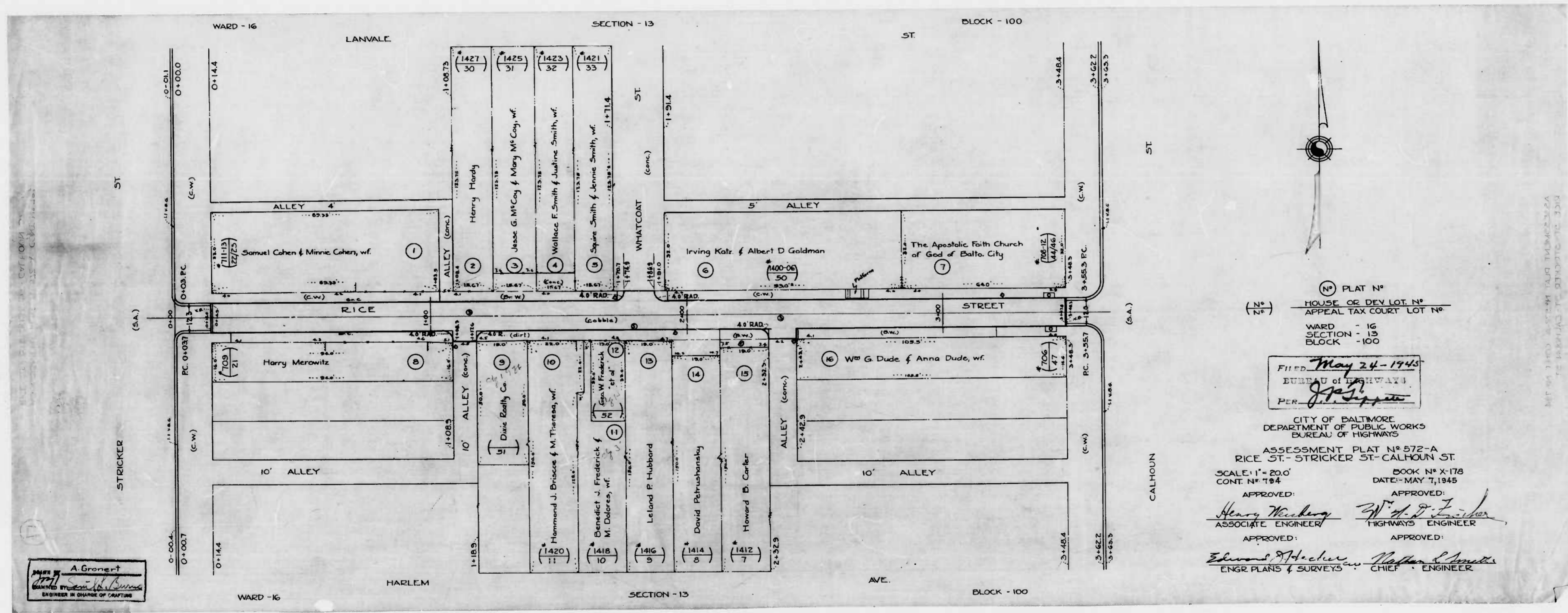
V.G.F.  
 ENGINEER

PINEBRUSH RD - GREENSPRING AVE - 265 1/2 S.W. OF GREENSPRING AVE  
 ASSESSMENT PLAT No 578-A  
 CONT. No 794







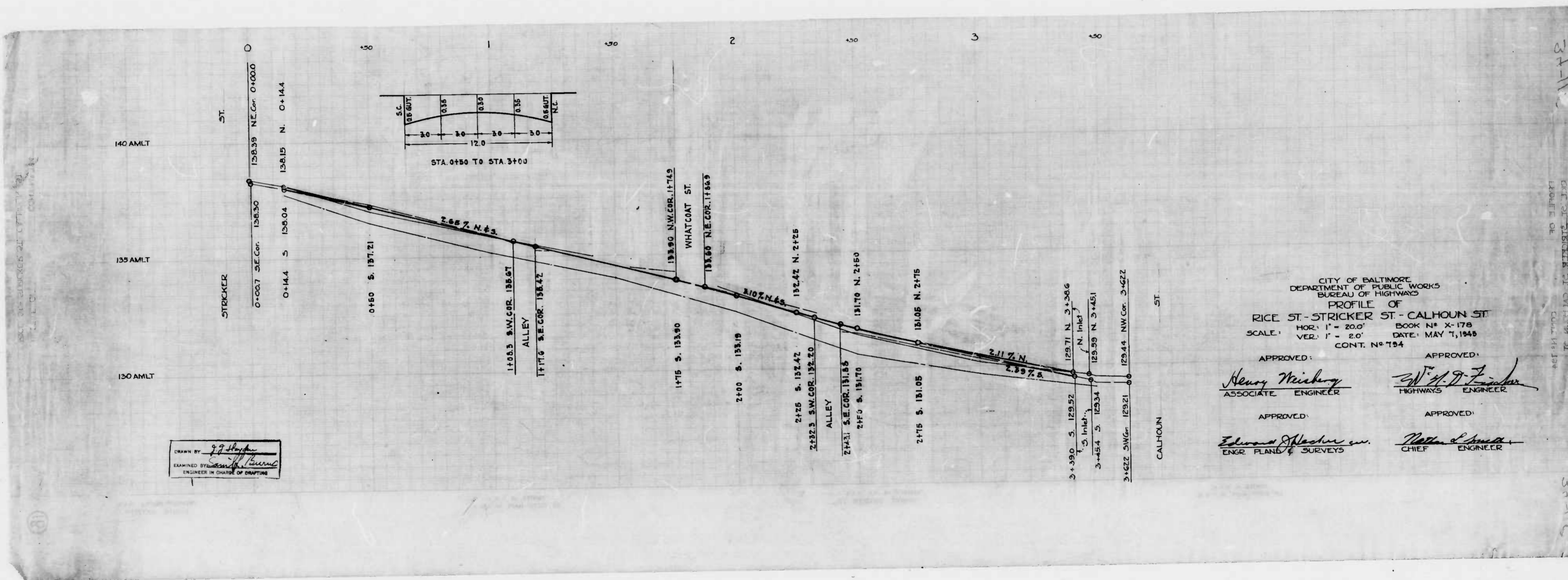


PLAT NO.  
HOUSE OR DEV. LOT NO.  
APPEAL TAX COURT LOT NO.

FILED May 24 - 1945  
BUREAU OF HIGHWAYS  
PER J. J. [Signature]

CITY OF BALTIMORE  
DEPARTMENT OF PUBLIC WORKS  
BUREAU OF HIGHWAYS  
ASSESSMENT PLAT NO. 572-A  
RICE ST. - STRICKER ST. - CALHOUN ST.  
SCALE 1" = 200'  
CONT. NO. 194  
DATE - MAY 7, 1945  
BOOK NO. X-178  
APPROVED: Henry Weikberg ASSOCIATE ENGINEER  
APPROVED: W. H. [Signature] HIGHWAYS ENGINEER  
APPROVED: Edward A. Hecker ENGR. PLANS & SURVEYS  
APPROVED: Nathan S. [Signature] CHIEF ENGINEER

A. Gronert  
ENGINEER IN CHARGE OF DRAFTING

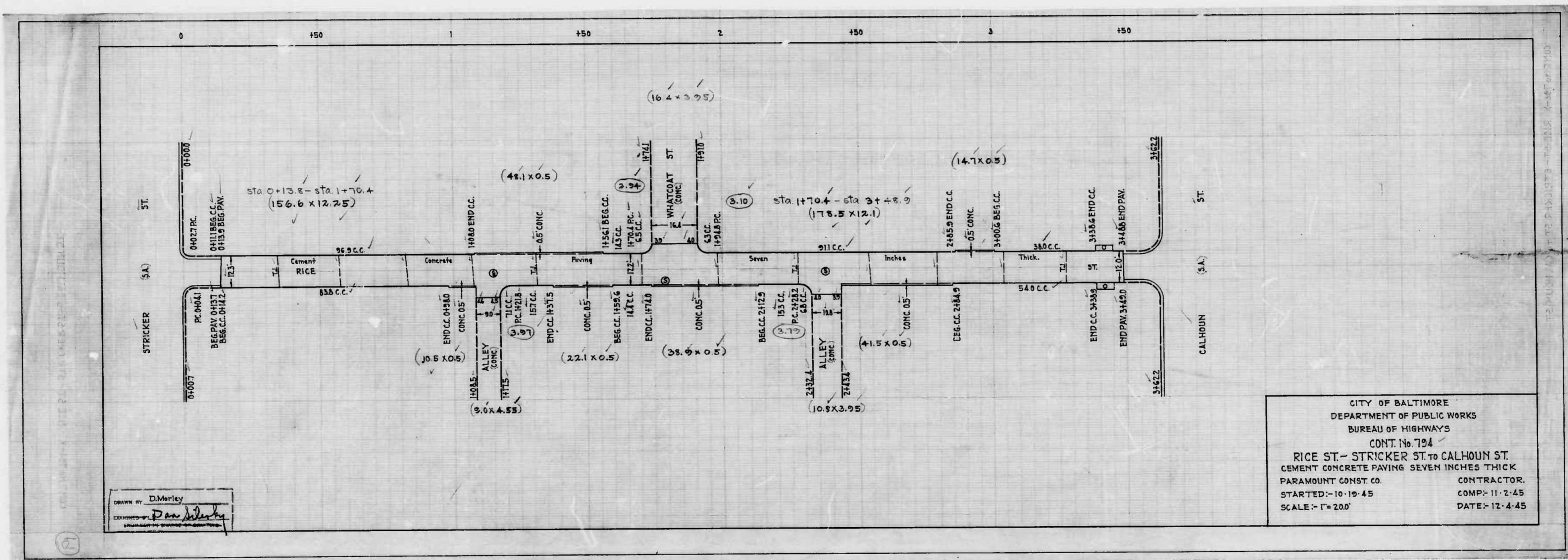


DRAWN BY *J. J. Hays*  
 EXAMINED BY *Samuel Burns*  
 ENGINEER IN CHARGE OF DRAFTING

CITY OF BALTIMORE  
 DEPARTMENT OF PUBLIC WORKS  
 BUREAU OF HIGHWAYS  
 PROFILE OF  
 RICE ST. - STRICKER ST. - CALHOUN ST.  
 SCALE: HOR. 1" = 20.0' BOOK N° X-178  
 VER. 1" = 2.0' DATE: MAY 7, 1945  
 CONT. N° 194

APPROVED: *Henry Weisberg* ASSOCIATE ENGINEER  
 APPROVED: *W. A. J. Fisher* HIGHWAYS ENGINEER  
 APPROVED: *Edward S. Fisher* ENGR. PLANNING & SURVEYS  
 APPROVED: *Robert S. Smith* CHIEF ENGINEER

34-112  
 PROFILE OF RICE ST. - STRICKER ST. - CALHOUN ST.



DRAWN BY: D. Merley  
 CHECKED BY: *Don Merley*

CITY OF BALTIMORE  
 DEPARTMENT OF PUBLIC WORKS  
 BUREAU OF HIGHWAYS  
 CONT. No. 794  
 RICE ST - STRICKER ST TO CALHOUN ST  
 CEMENT CONCRETE PAVING SEVEN INCHES THICK  
 PARAMOUNT CONST. CO. CONTRACTOR  
 STARTED - 10-19-45 COMP. - 11-2-45  
 SCALE - 1" = 20' DATE - 12-4-45