

(M) PLAT NO  
 (N) HOUSE OR DEV. LOT NO  
 (P) APPEAL TAX COURT LOT NO  
 WARD - 6  
 SECTION - 11  
 BLOCK - 1720

FILED May 24 - 1945  
 BUREAU OF HIGHWAYS  
 PER [Signature]

CITY OF BALTIMORE  
 DEPARTMENT OF PUBLIC WORKS  
 BUREAU OF HIGHWAYS

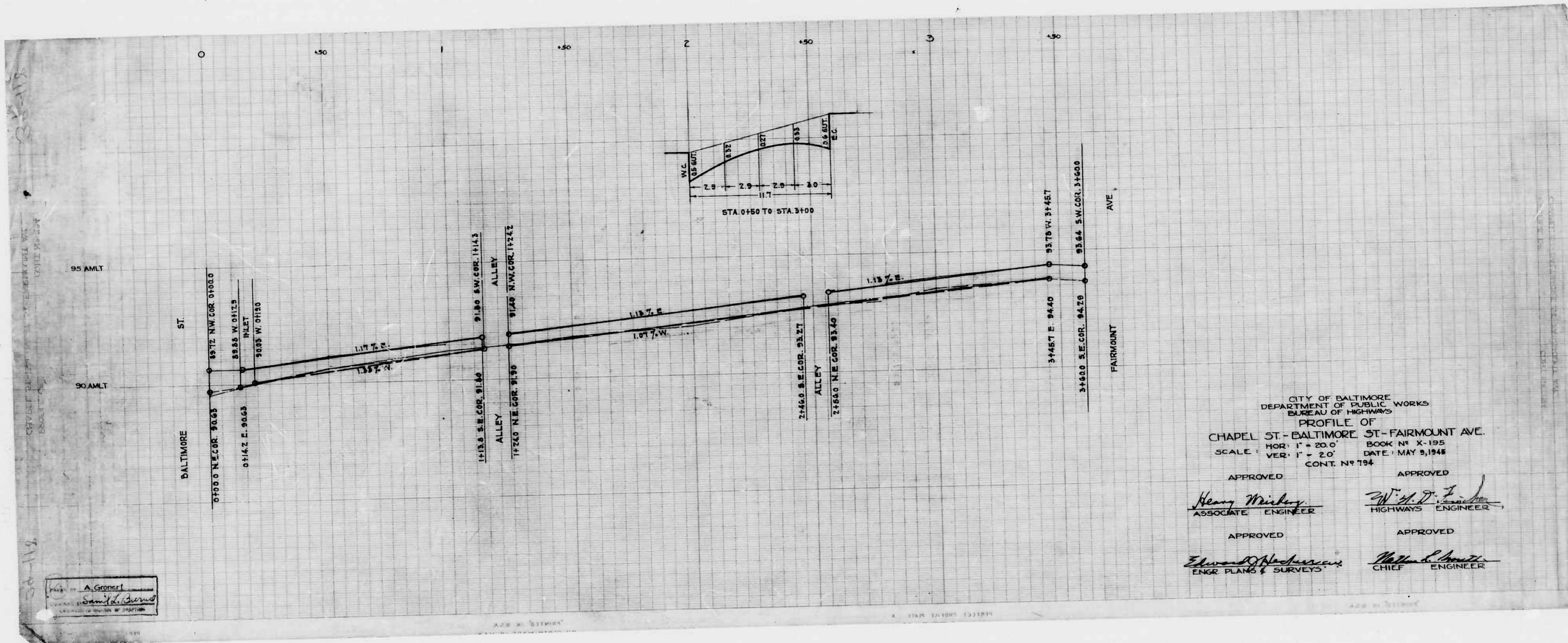
ASSESSMENT PLAT NO 570-A  
 CHAPEL ST. - BALTIMORE ST. - FAIRMOUNT AVE.

SCALE: 1" = 20.0'  
 CONT. NO 794

BOOK NO X-195  
 DATE - MAY 3, 1945

APPROVED [Signature] ASSOCIATE ENGINEER  
 APPROVED [Signature] HIGHWAYS ENGINEER  
 APPROVED [Signature] ENGR. PLANS & SURVEYS  
 APPROVED [Signature] CHIEF ENGINEER

A. Gronert  
 [Signature]  
 ENGINEER IN CHARGE OF SURVEYS



CITY OF BALTIMORE  
 DEPARTMENT OF PUBLIC WORKS  
 BUREAU OF HIGHWAYS  
 PROFILE OF  
 CHAPEL ST. - BALTIMORE ST. - FAIRMOUNT AVE.  
 HOR. 1" = 20.0' BOOK NO. X-195  
 VER. 1" = 20' DATE: MAY 9, 1948  
 CONT. NO. 754

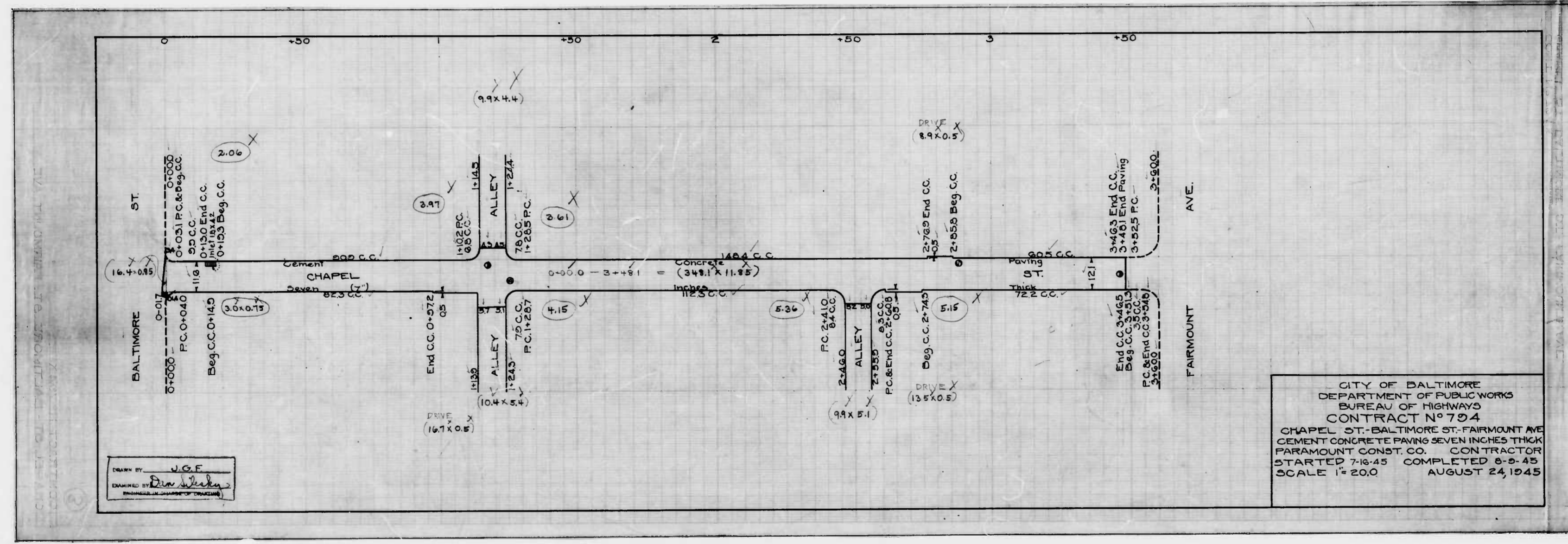
APPROVED *Henry Weisberg*  
 ASSOCIATE ENGINEER

APPROVED *W. H. D. J.*  
 HIGHWAYS ENGINEER

APPROVED *Edward J. Henderson*  
 ENGR. PLANS & SURVEYS

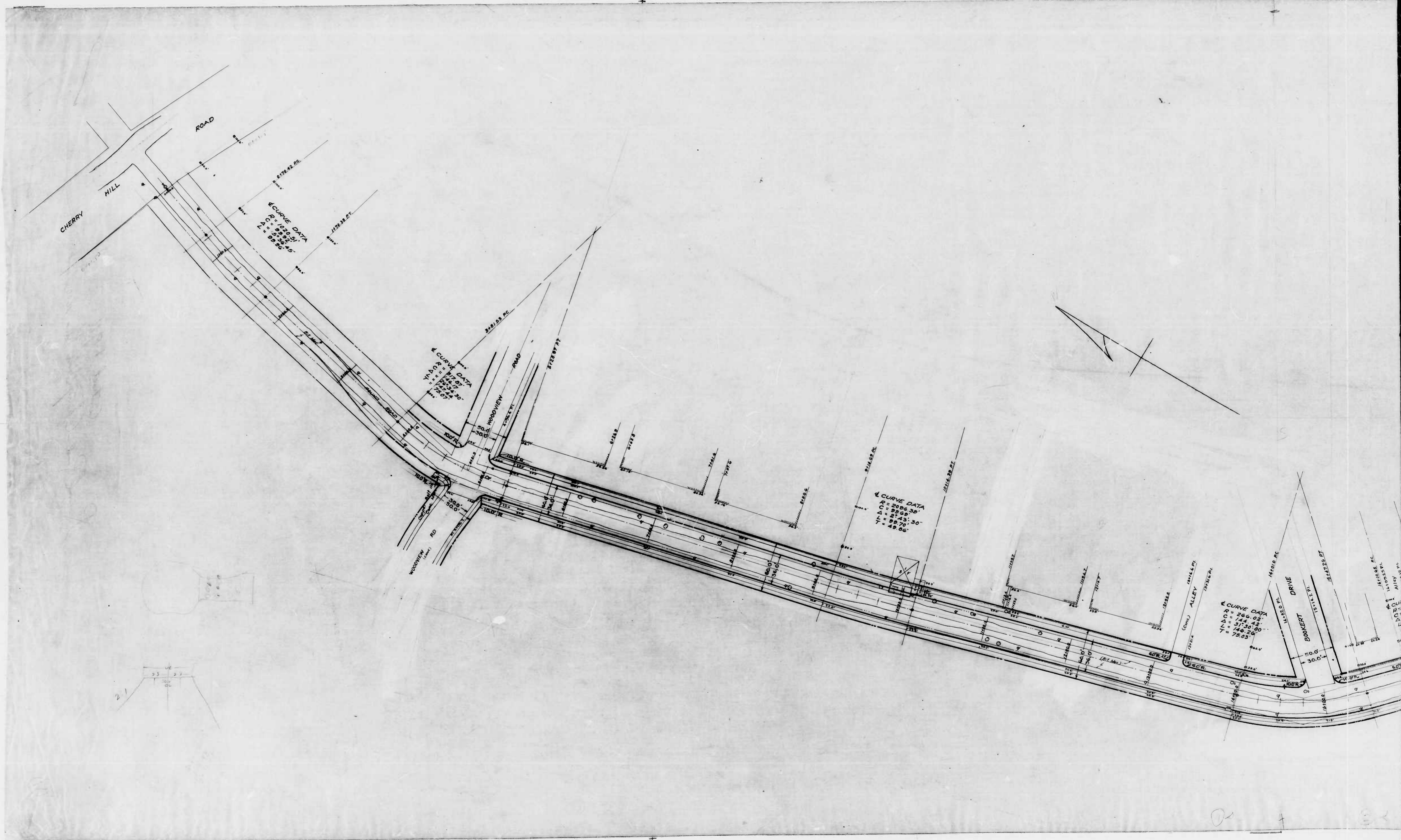
APPROVED *Walter L. Smith*  
 CHIEF ENGINEER

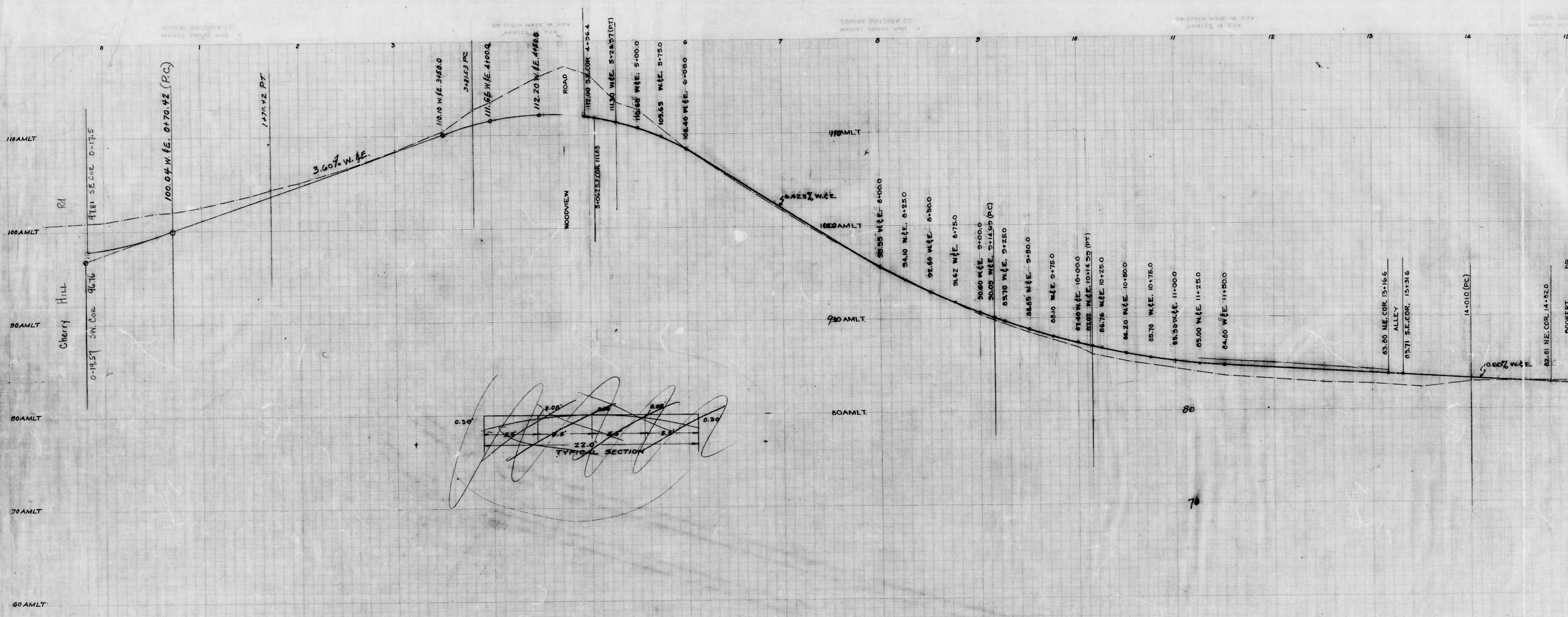
Prepared by *A. Green*  
 Checked by *Samuel Green*



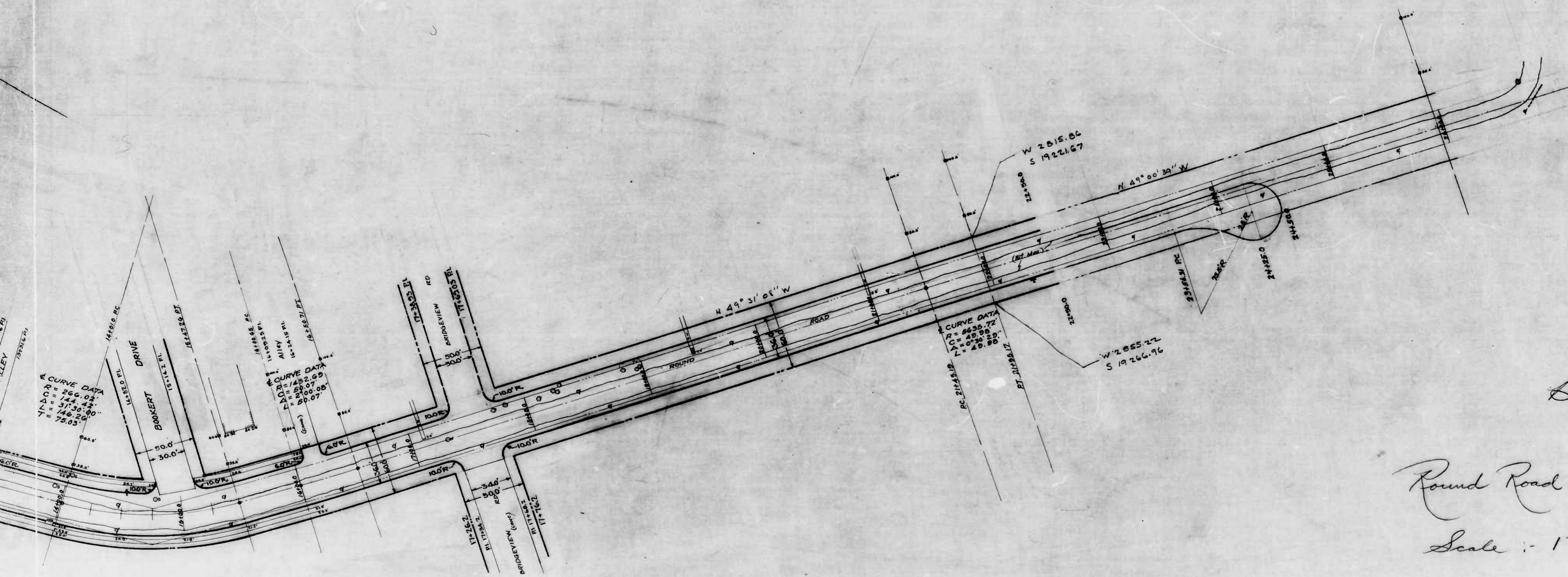
DRAWN BY: J.G.F.  
 CHECKED BY: *[Signature]*  
 ENGINEER, DEPARTMENT OF PUBLIC WORKS

CITY OF BALTIMORE  
 DEPARTMENT OF PUBLIC WORKS  
 BUREAU OF HIGHWAYS  
 CONTRACT NO. 794  
 CHAPEL ST. - BALTIMORE ST. - FAIRMOUNT AVE  
 CEMENT CONCRETE PAVING SEVEN INCHES THICK  
 FAIRMOUNT CONST. CO. CONTRACTOR  
 STARTED 7-16-45 COMPLETED 8-5-45  
 SCALE 1" = 20.0 AUGUST 24, 1945

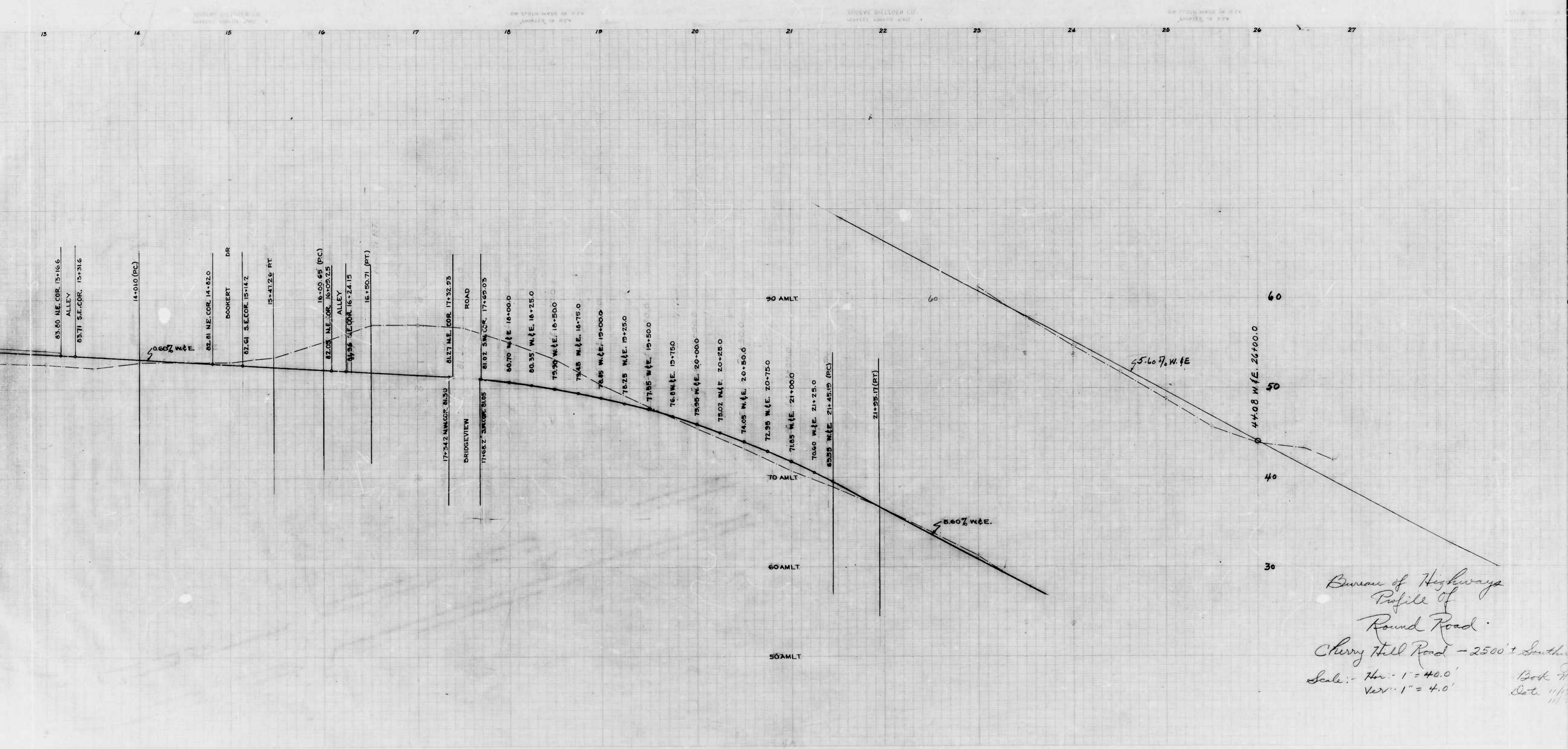




1

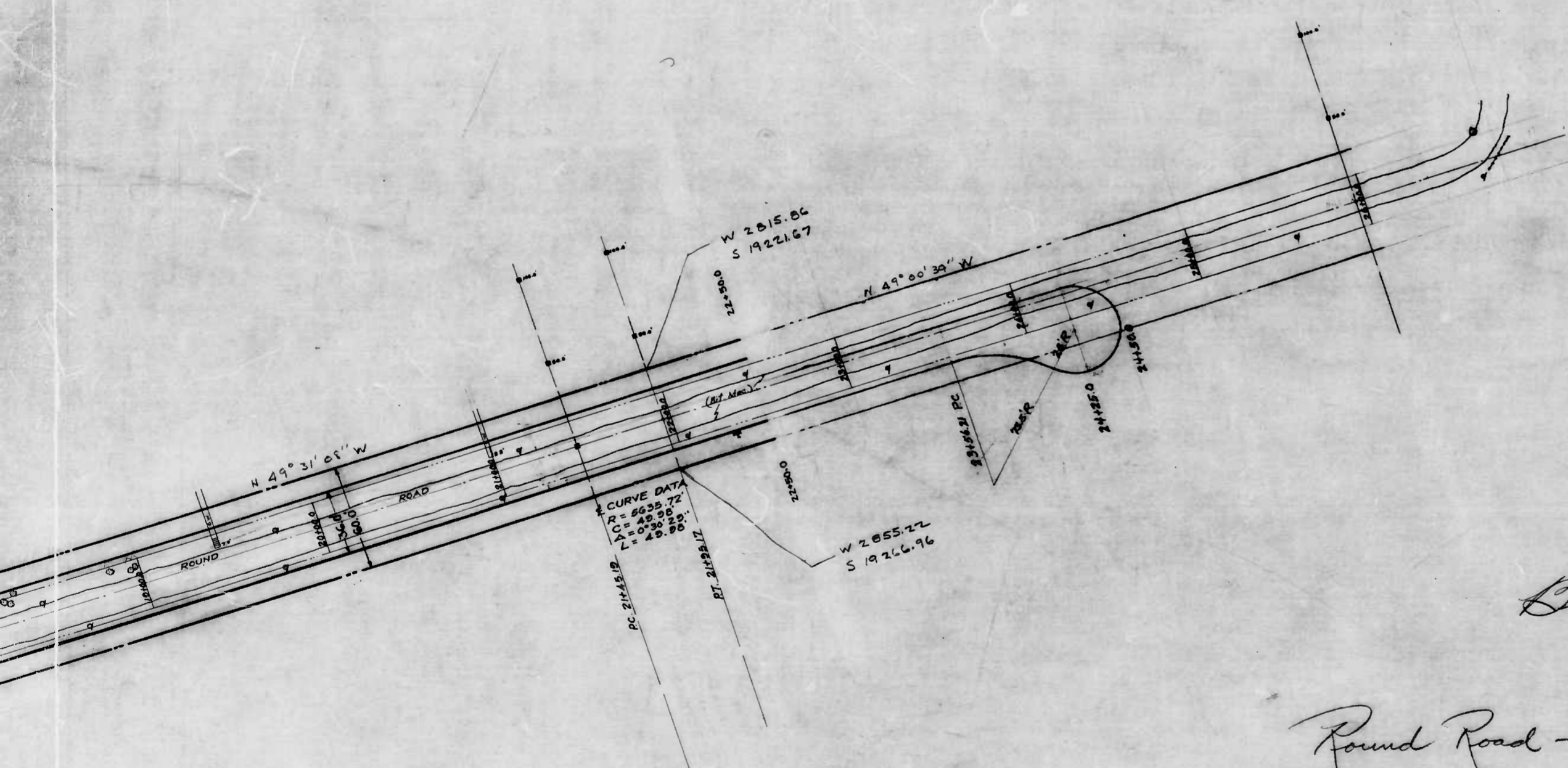


Bureau of Highways  
 Plan of  
 Round Road - Cherry Hill Rd - 2500'± Southern  
 Scale - 1" = 40.0'  
 Book 719 X - 203  
 Date - 11-17-44  
 11-2-50



Bureau of Highways  
 Profile of  
 Round Road  
 Cherry Hill Road - 2500' ± South  
 Scale: - Hor. 1" = 40.0'  
 Vert. 1" = 4.0'

Book #  
 Date 11/11



Bureau of Highways  
 Plan of  
 Round Road - Cherry Hill Rd - 2500'± Southerly

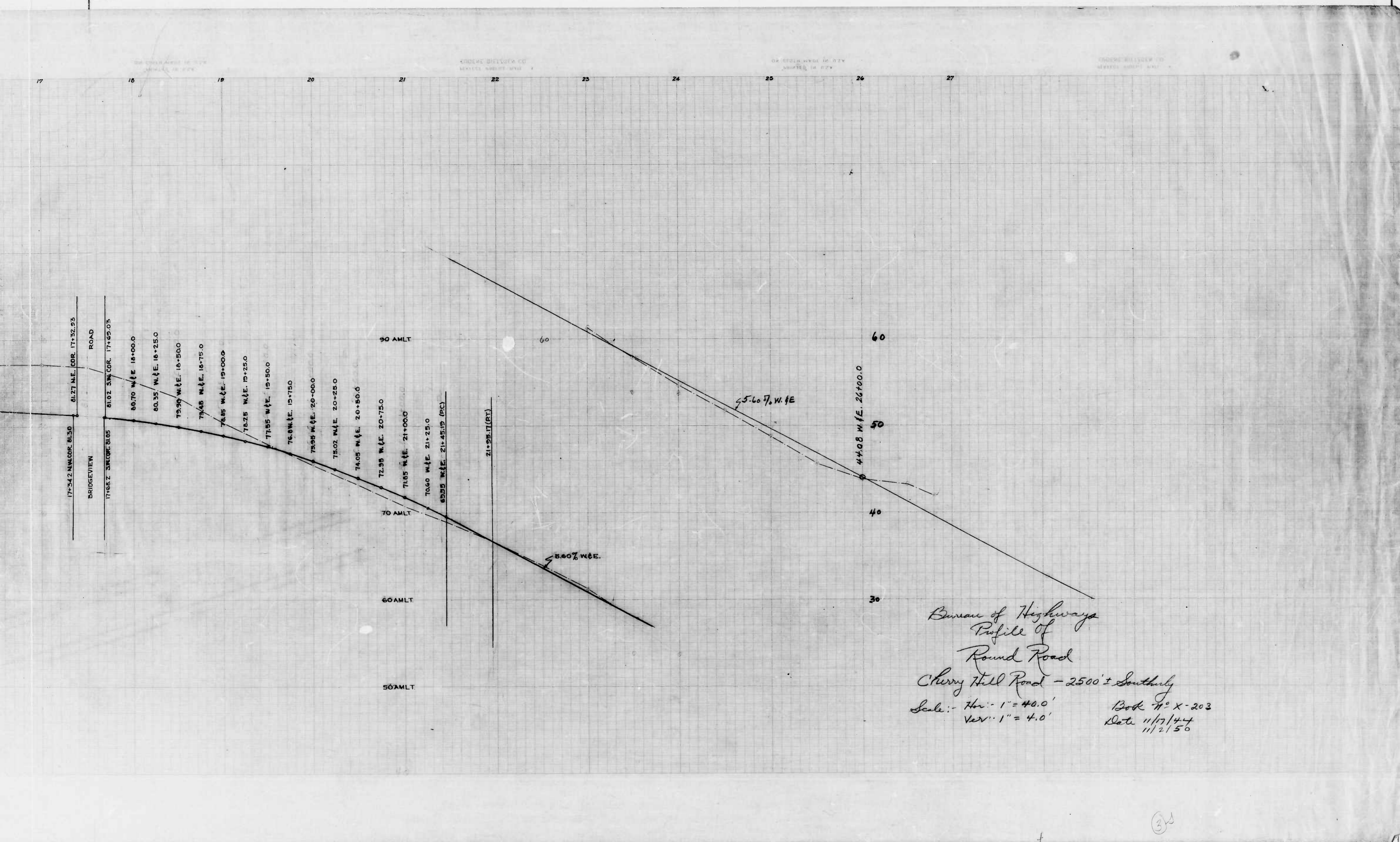
Scale :- 1" = 40.0'

Book 712 X-203-X245

Date - 11-17-44  
 11-2-50

②





Bureau of Highways  
 Profile of  
 Round Road  
 Cherry Hill Road - 2500' ± Southwly  
 Scale: - Hor: 1" = 40.0'  
 Vert: 1" = 4.0'  
 Book No X-203  
 Date 11/17/44  
 11/2/50

(3)