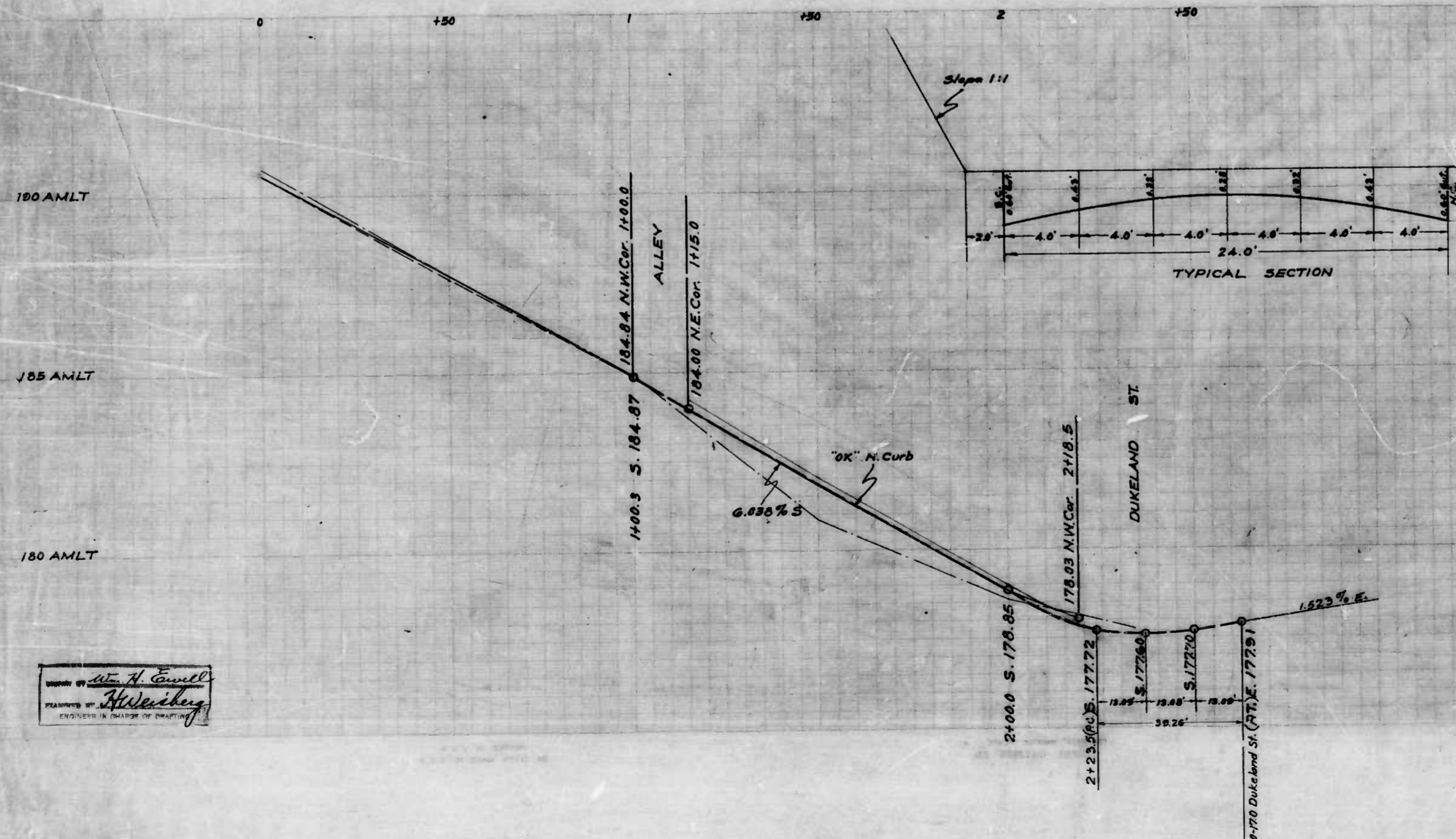


NOTE: - The issuance of this Plan & Profile does not commit the City to the acceptance and/or improvement of any thoroughfares shown thereon.



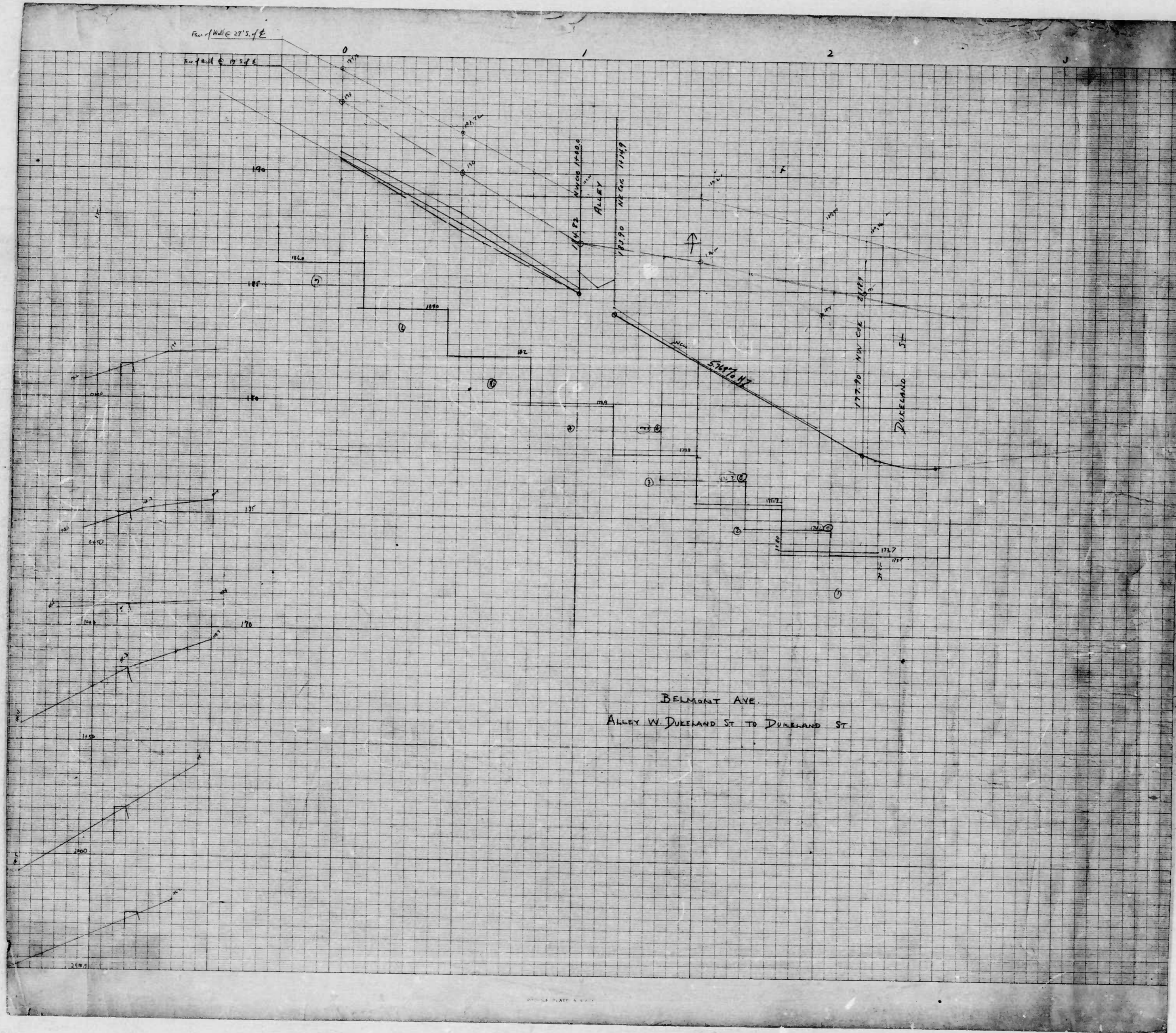
CITY OF BALTIMORE
 DEPARTMENT OF PUBLIC WORKS
 BUREAU OF HIGHWAYS
 PLAN & PROFILE
 BELMONT AVE.-AL.W. DUKELAND ST.-DUKELAND ST.
 PLAN 1" = 20.0' BOOK NO. X-156
 SCALE: HOR: 1" = 20.0' CONT. NO. 789
 PROF.: 1" = 20.0' VER.: 1" = 2.0' DATE: SEPT. 26, 1944.
 APPROVED
Edmund Spackler
 ASSOCIATE ENGINEER
 APPROVED
W. F. Fisher
 HIGHWAYS ENGINEER
 APPROVED
Walter J. Smith
 CHIEF ENGINEER.

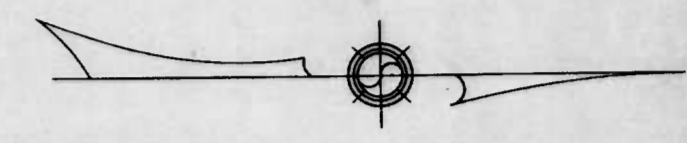
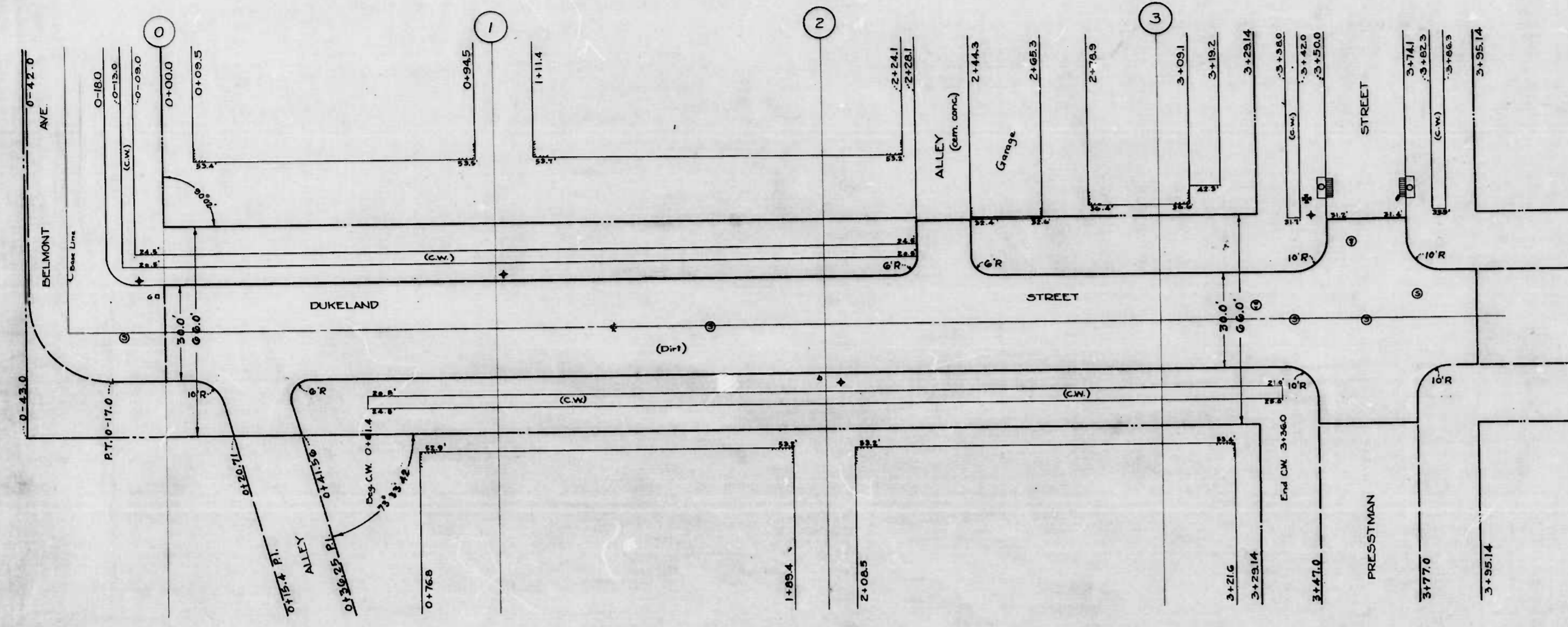
DESIGNED BY
W. H. Conwell
 DRAWN BY
H. H. Hickey
 CHECKED BY
W. H. Conwell

789

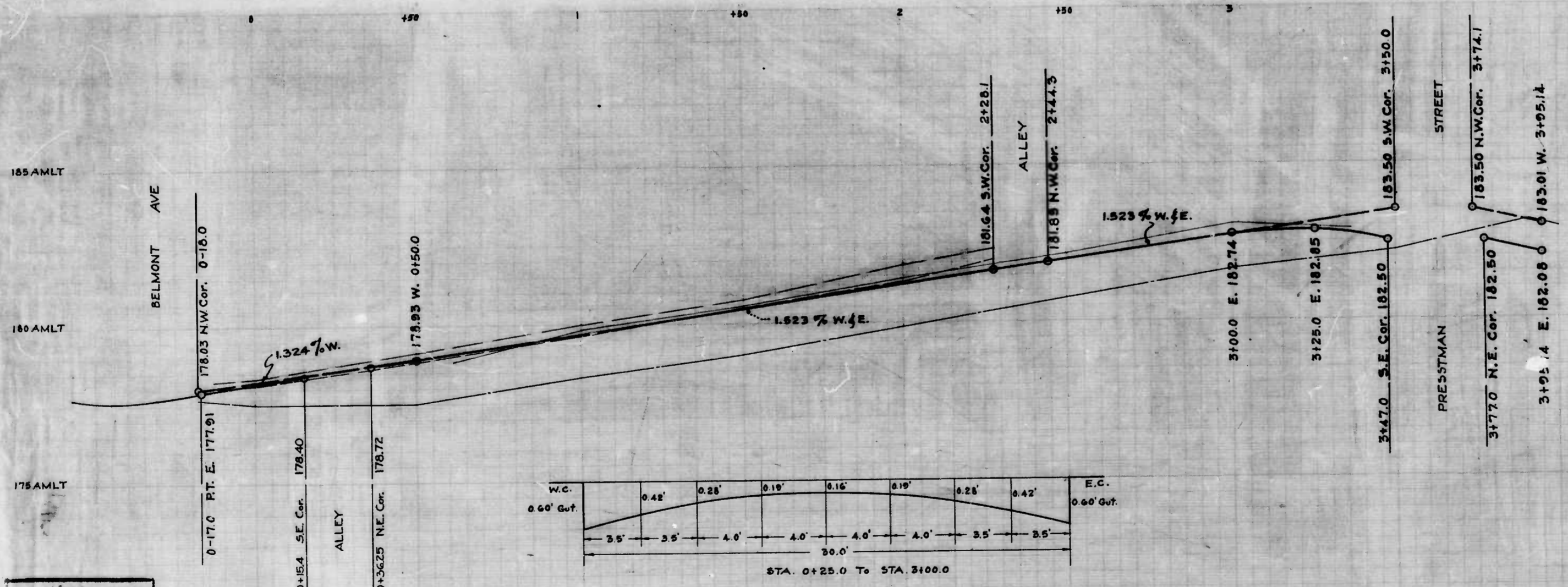
RATIO - 24

3





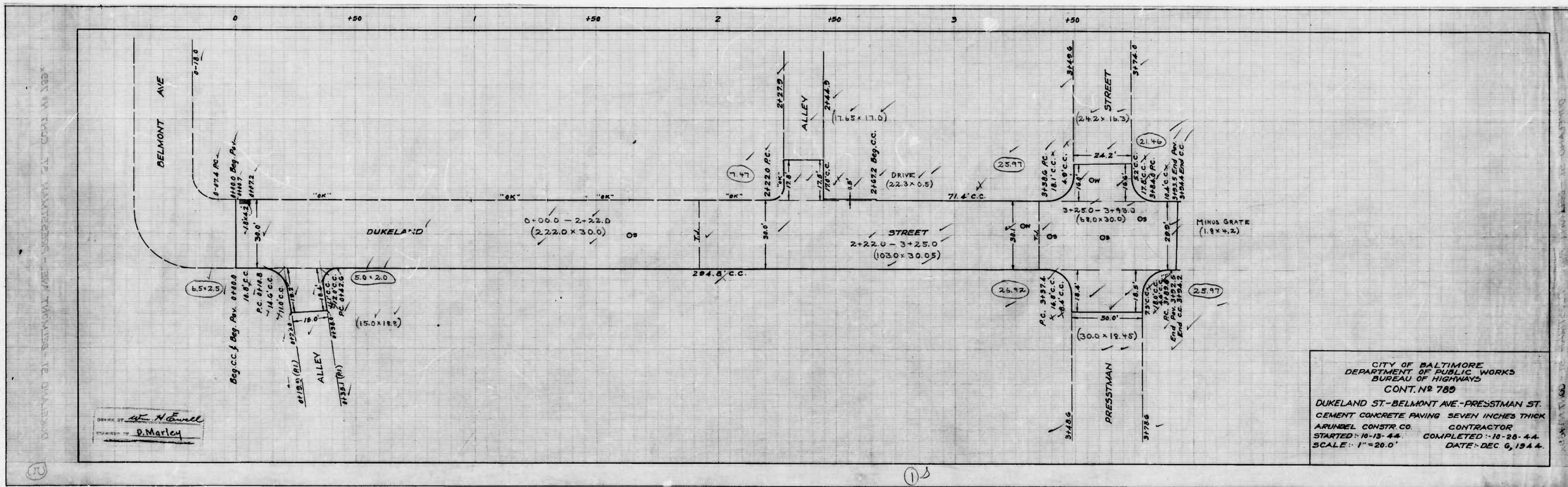
Note: The issuance of this Plan & Profile does not commit the City to the acceptance and/or improvement of any thoroughfares shown thereon.



CITY OF BALTIMORE
 DEPARTMENT OF PUBLIC WORKS
 BUREAU OF HIGHWAYS
 PLAN & PROFILE
 DUKELAND ST. - BELMONT AVE. - PRESSTMAN ST.
 PLAN: 1" = 80.0' BOOK NO. X-186
 SCALE: HOR.: 1" = 20.0' CONT. NO. 789
 PROF.: VER.: 1" = 2.0' DATE: SEPT. 27, 1944

APPROVED: *John J. Gannon* ASSOCIATE ENGINEER
 APPROVED: *W. J. Fisher* HIGHWAYS ENGINEER
 APPROVED: *Edward J. Blodgett* ENGR. PLANS & SURVEYS
 APPROVED: *William L. Smith* CHIEF ENGINEER

ACC. - W. H. E.
 ENGINEER IN CHARGE OF DRAFTING



CITY OF BALTIMORE
 DEPARTMENT OF PUBLIC WORKS
 BUREAU OF HIGHWAYS
 CONT. NO. 789
 DUKELAND ST.-BELMONT AVE.-PRESSTMAN ST.
 CEMENT CONCRETE PAVING SEVEN INCHES THICK
 ARUNDEL CONSTR. CO. CONTRACTOR
 STARTED: 10-15-44. COMPLETED: 10-28-44.
 SCALE: 1"=20.0' DATE: DEC. 6, 1944.