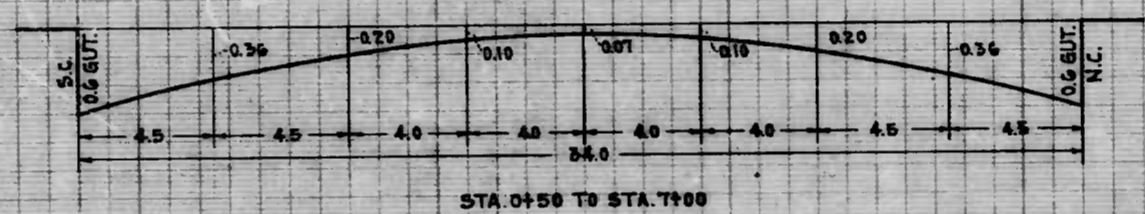
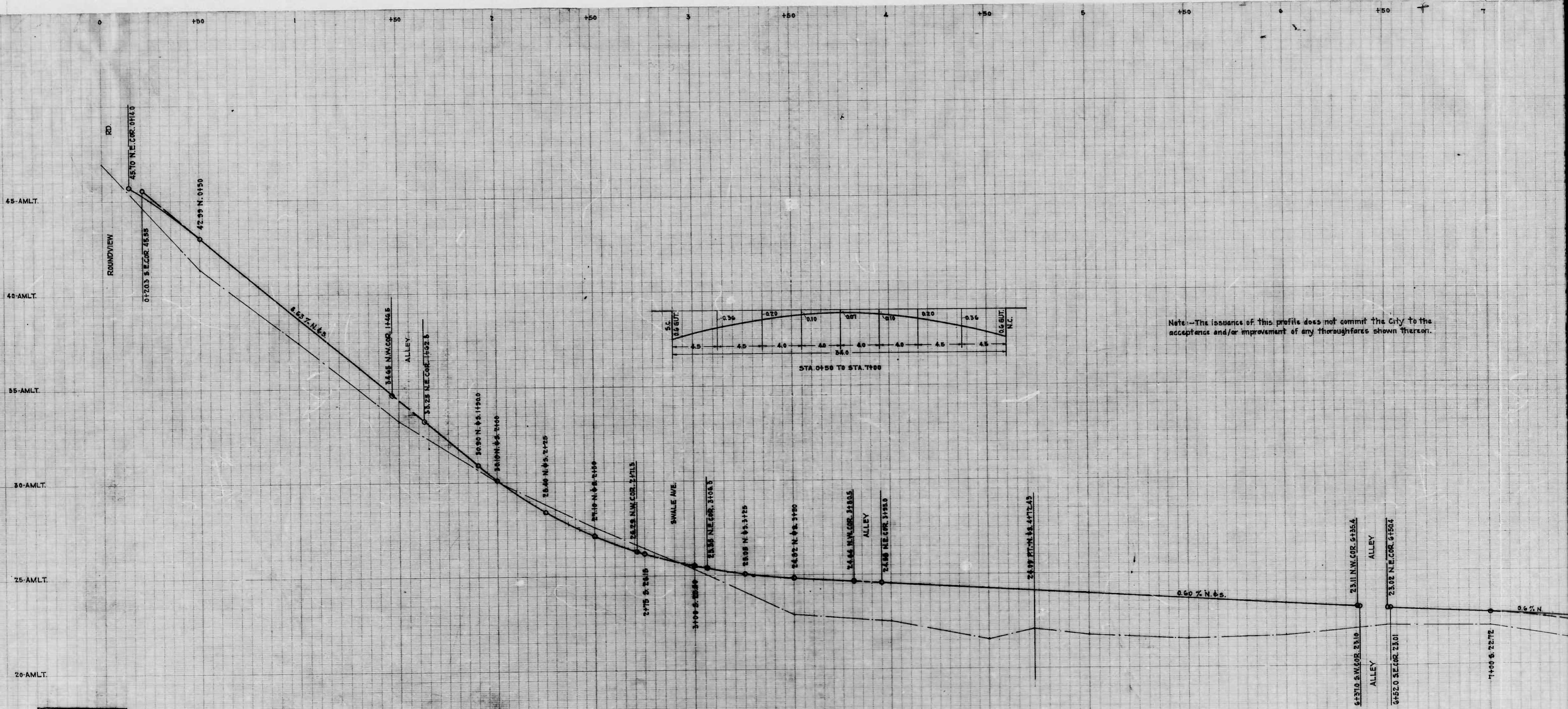


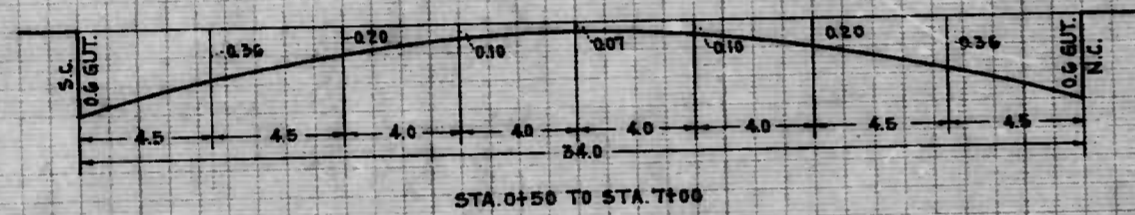
DRAWN BY J. J. HAYDEN
 EXAMINED BY *W. H. ...*
 ENGINEER IN CHARGE OF DRAFTING

Sheet 1

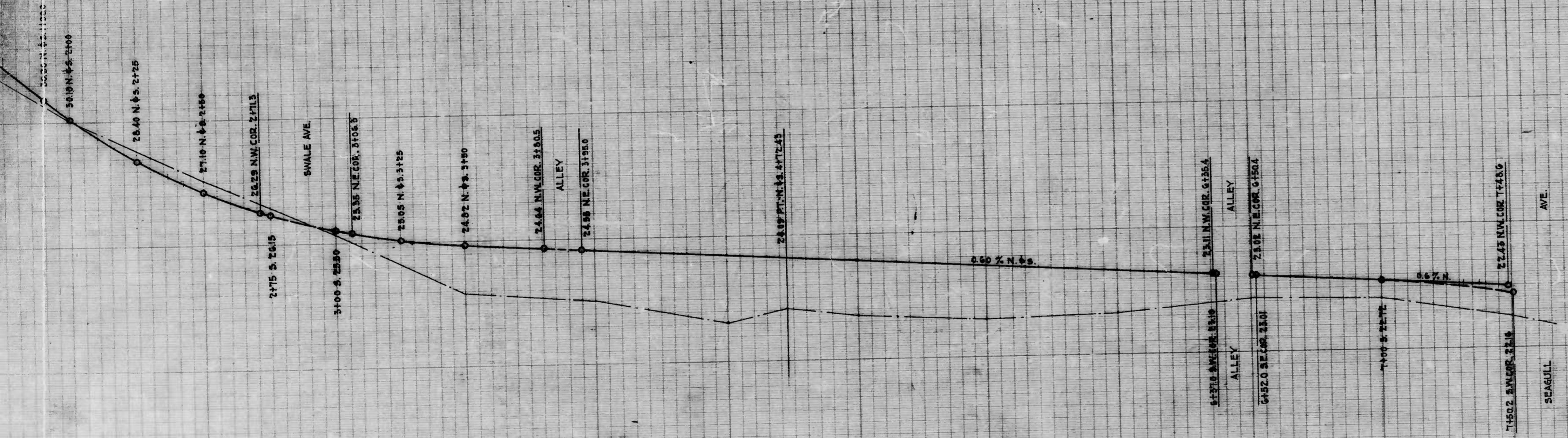


Note:--The issuance of this profile does not commit the City to the acceptance and/or improvement of any thoroughfares shown thereon.

DRAWN BY: J.J. HAYDEN
 EXAMINED BY: *[Signature]*
 ENGINEER IN CHARGE OF COUNTY



Note: The issuance of this profile does not commit the City to the acceptance and/or improvement of any thoroughfares shown thereon.



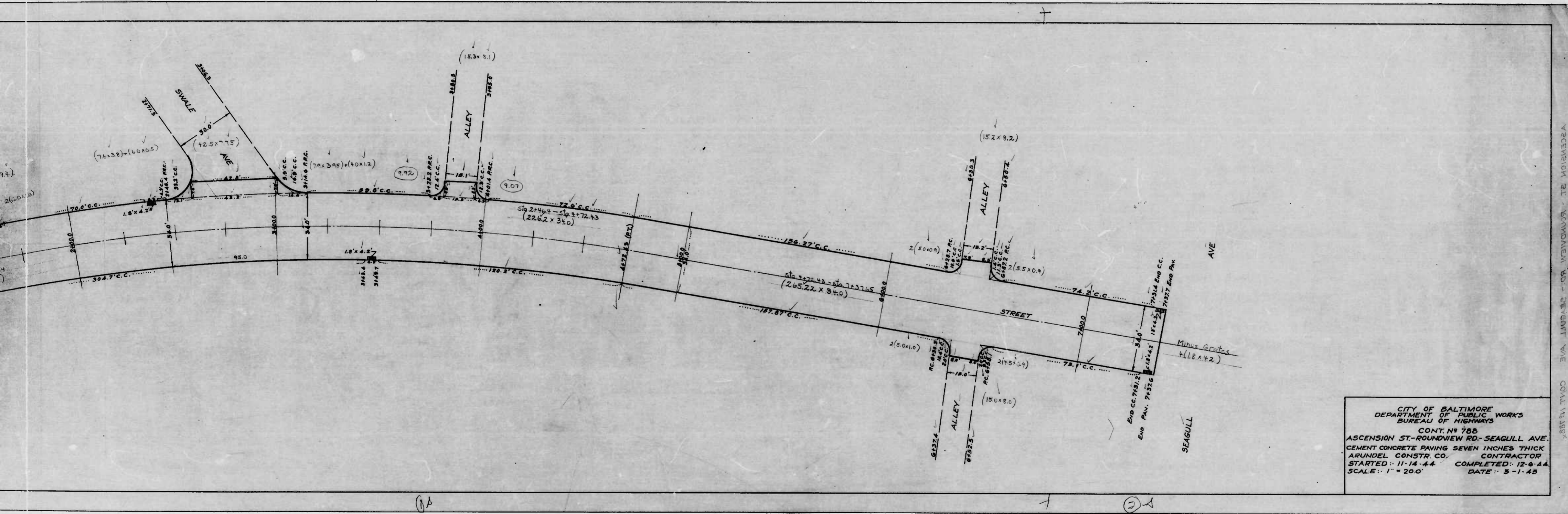
CITY OF BALTIMORE
 DEPARTMENT OF PUBLIC WORKS
 BUREAU OF HIGHWAYS
 ESTABLISHED GRADE OF
 ASCENSION ST. - ROUNDVIEW RD. TO SEAGULL AVE.
 CONT. No. 788

SCALES - HOR. 1" = 20.0'
 VER. 1" = 2.0'

APPROVED - *[Signature]*
 ASSOCIATE ENGINEER

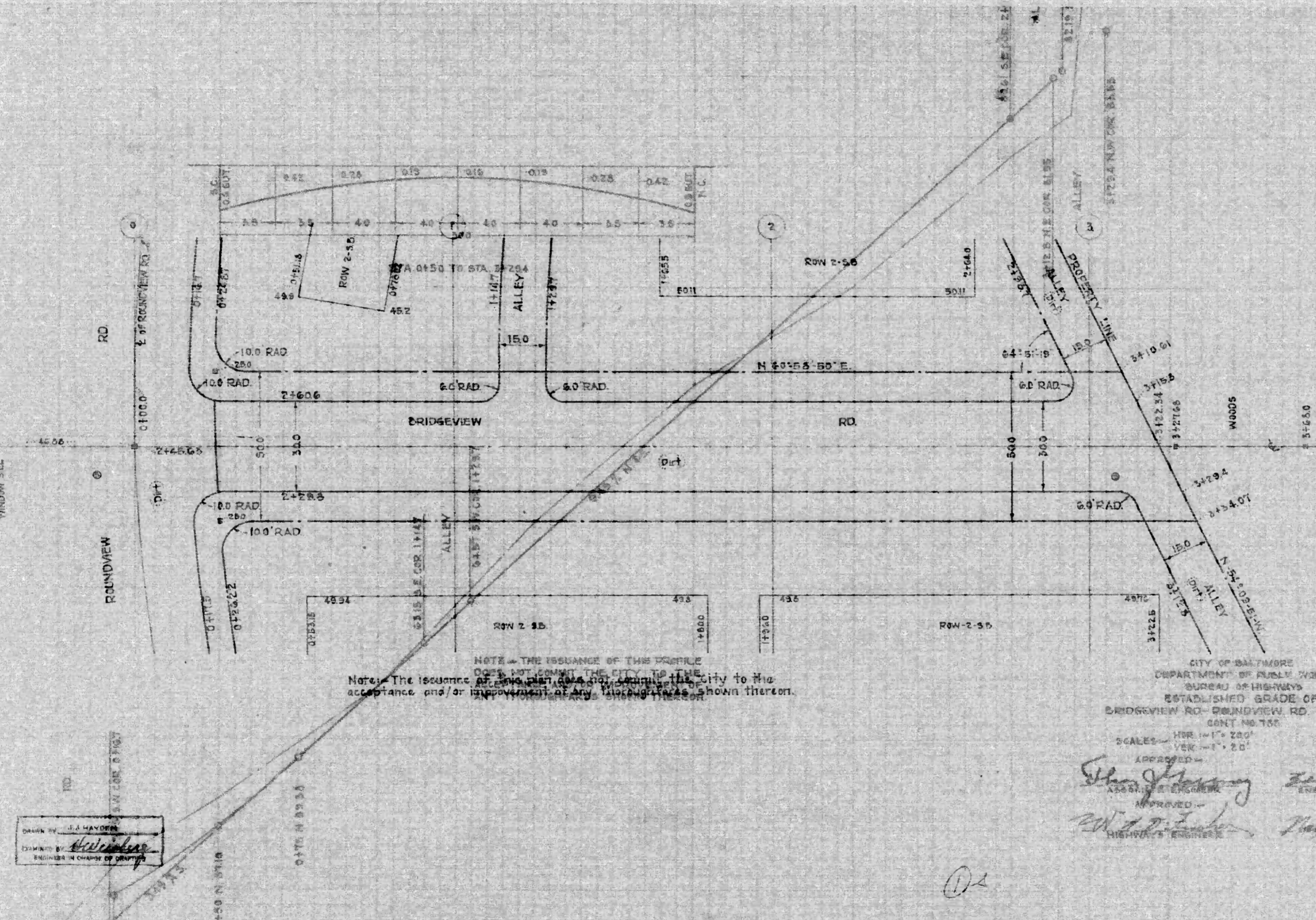
APPROVED - *[Signature]*
 HIGHWAYS ENGINEER

BOOK NO. C-165
 OCTOBER 3, 1944
 APPROVED - *[Signature]*
 CHIEF ENGINEER



CITY OF BALTIMORE
 DEPARTMENT OF PUBLIC WORKS
 BUREAU OF HIGHWAYS
 CONT. NO. 788
 ASCENSION ST. - ROUNDVIEW RD. - SEAGULL AVE.
 CEMENT CONCRETE PAVING SEVEN INCHES THICK
 ARUNDEL CONSTR. CO. CONTRACTOR
 STARTED: 11-14-44 COMPLETED: 12-6-44
 SCALE: 1" = 200' DATE: 3-1-45

50-AMLT
75-AMLT
70-AMLT
45-AMLT
80-AMLT
55-AMLT



NOTE - THE ISSUANCE OF THIS PLAN
 DOES NOT CONSTITUTE THE CITY TO THE
 ACCEPTANCE AND/OR IMPROVEMENT OF ANY PROPOSED WORKS SHOWN THEREON.

DRAWN BY: J.J. MANNING
 CHECKED BY: [Signature]
 ENGINEER IN CHARGE OF GROUP

CITY OF BALTIMORE
 DEPARTMENT OF PUBLIC WORKS
 BUREAU OF HIGHWAYS
 ESTABLISHED GRADE OF
 BRIDGEVIEW RD - ROUNDVIEW RD TO 300' SOUTH
 CONT. NO. 155

SCALE - 1" = 200'

BOOK NO. 6755
 SEPT. 25, 1944

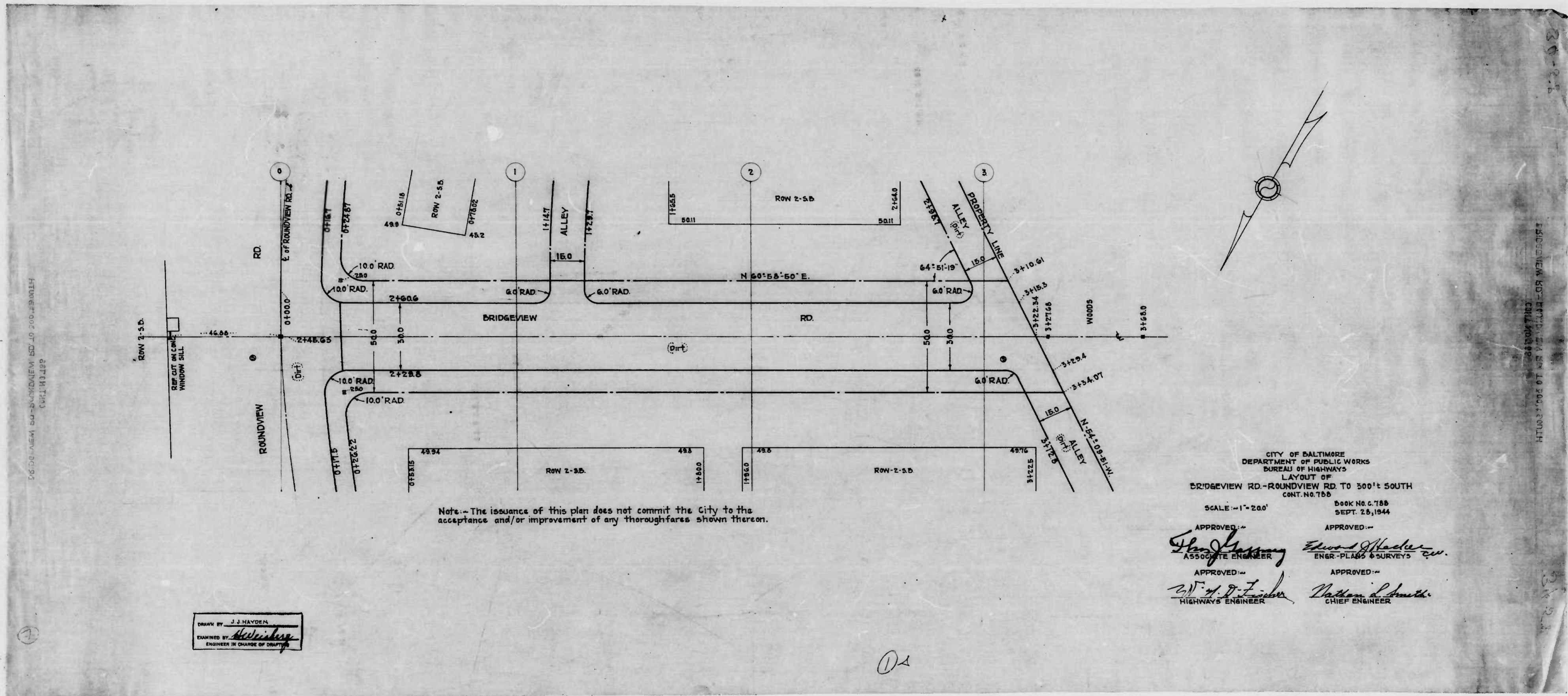
APPROVED: [Signature]
 ASSISTANT ENGINEER

APPROVED: [Signature]
 ASSISTANT ENGINEER

APPROVED: [Signature]
 ASSISTANT ENGINEER

APPROVED: [Signature]
 CHIEF ENGINEER

02



Note: - The issuance of this plan does not commit the City to the acceptance and/or improvement of any thoroughfares shown thereon.

DRAWN BY J.J. HAYDEN
 EXAMINED BY *[Signature]*
 ENGINEER IN CHARGE OF DEPT.

CITY OF BALTIMORE
 DEPARTMENT OF PUBLIC WORKS
 BUREAU OF HIGHWAYS
 LAYOUT OF
 BRIDGEVIEW RD.-ROUNDVIEW RD TO 500'± SOUTH
 CONT. NO. 788

SCALE: -1"=200'
 BOOK NO. C. 788
 SEPT. 28, 1944

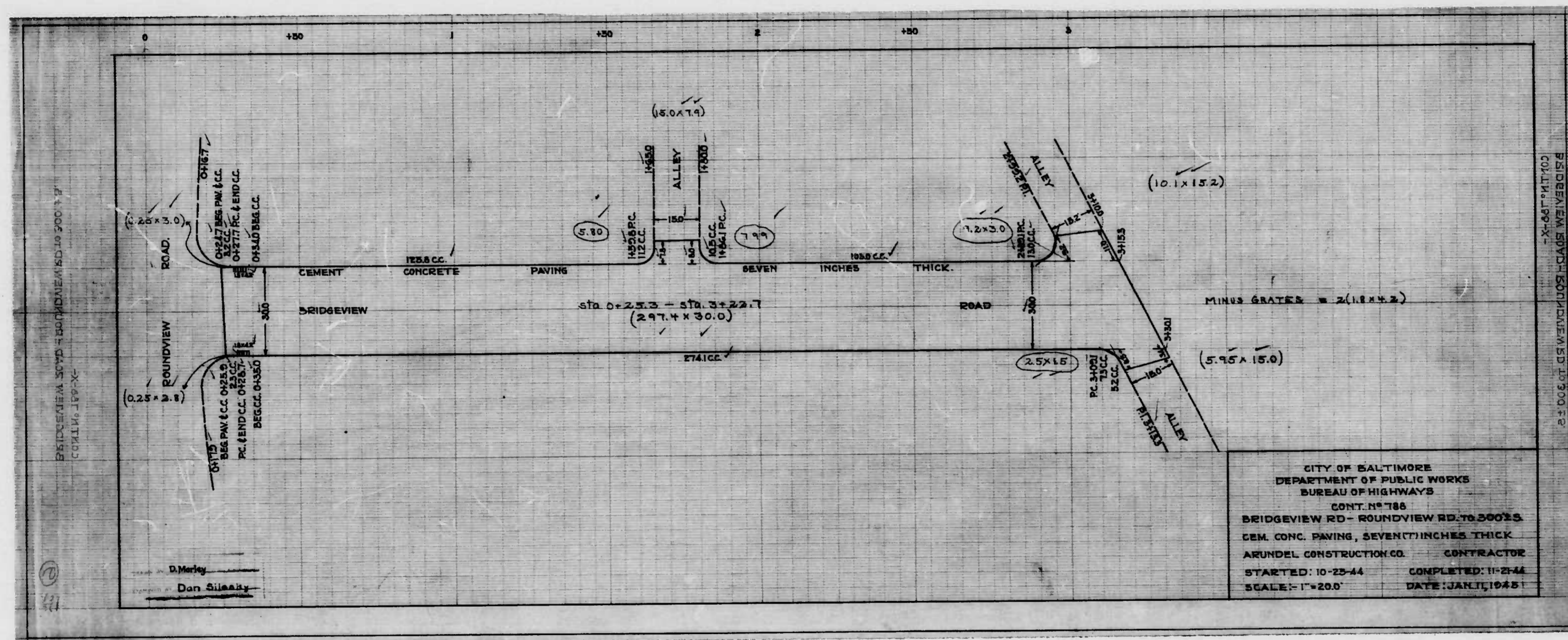
APPROVED: *[Signature]*
 ASSOCIATE ENGINEER

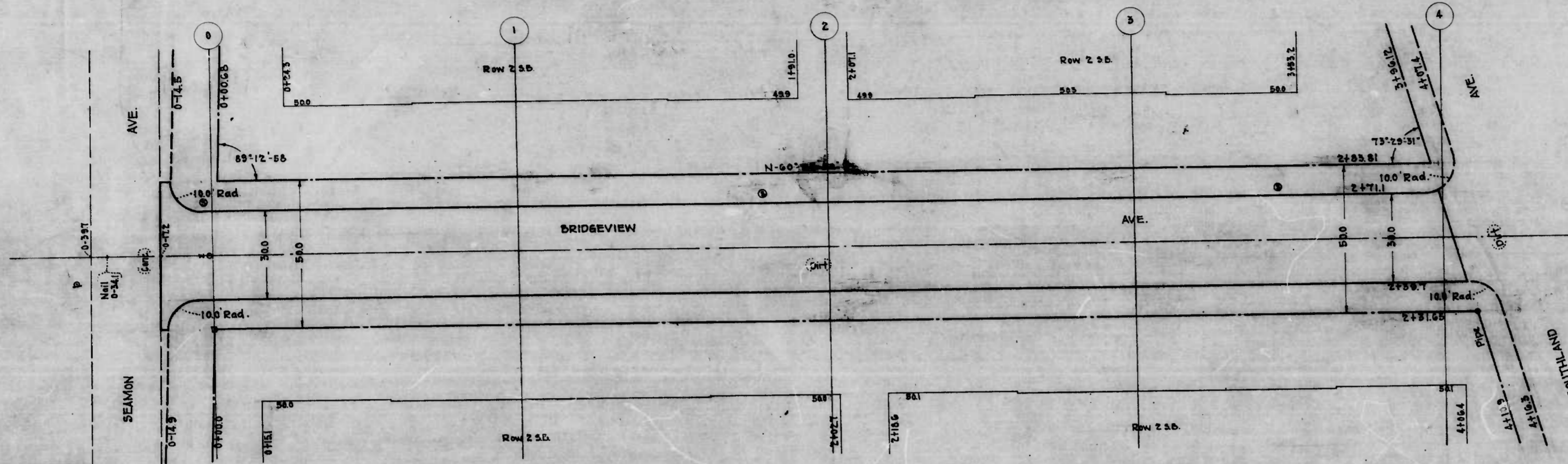
APPROVED: *[Signature]*
 ENGR.-PLANS & SURVEYS

APPROVED: *[Signature]*
 HIGHWAYS ENGINEER

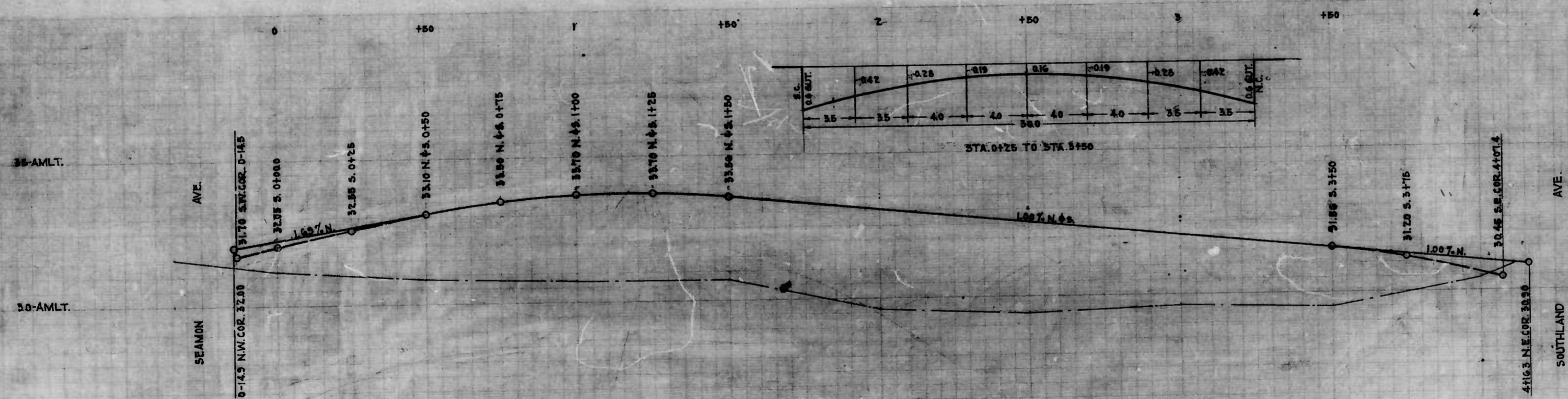
APPROVED: *[Signature]*
 CHIEF ENGINEER

02





Note: - The issuance of this plan & profile does not commit the City to the acceptance and/or improvement of any thoroughfares shown thereon.



CITY OF BALTIMORE
 DEPARTMENT OF PUBLIC WORKS
 BUREAU OF HIGHWAYS
 PLAN & PROFILE
 BRIDGEVIEW AVE. - SEAMON AVE. TO SOUTHLAND AVE.
 CONT. NO. 166
 BOOK NO. C.788
 OCTOBER 1934
 SCALES: PLAN - 1" = 20.0' HOR. - 1" = 20.0' VER. - 1" = 2.0'

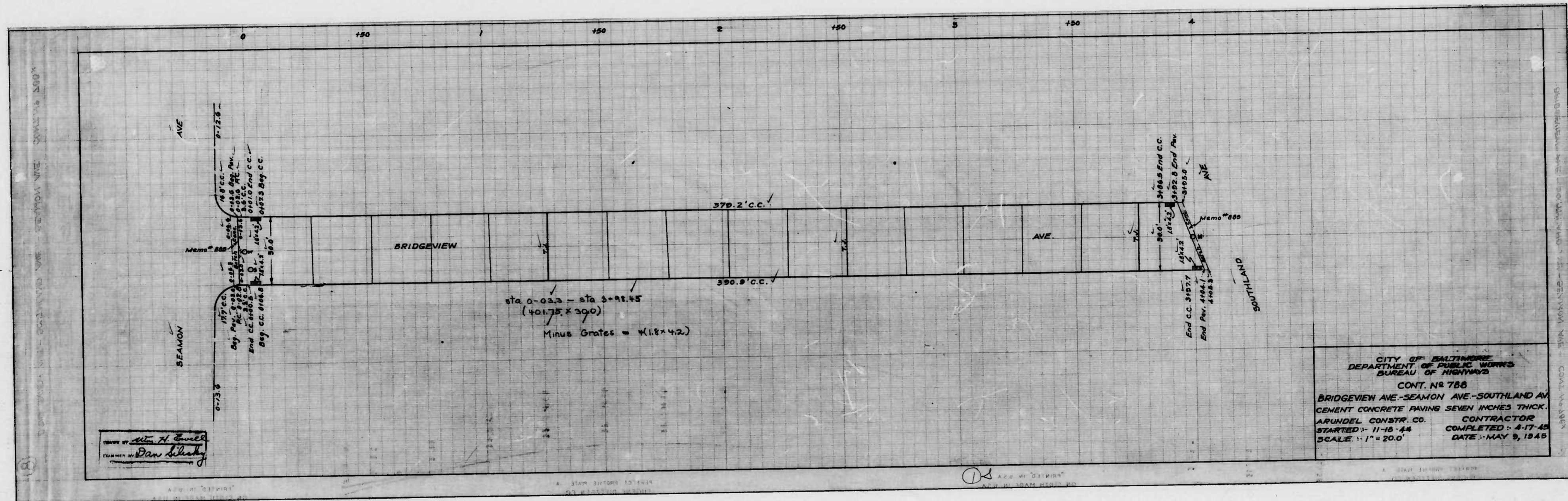
APPROVED: *Philip J. Shapp*
 ASSIST. ENGINEER

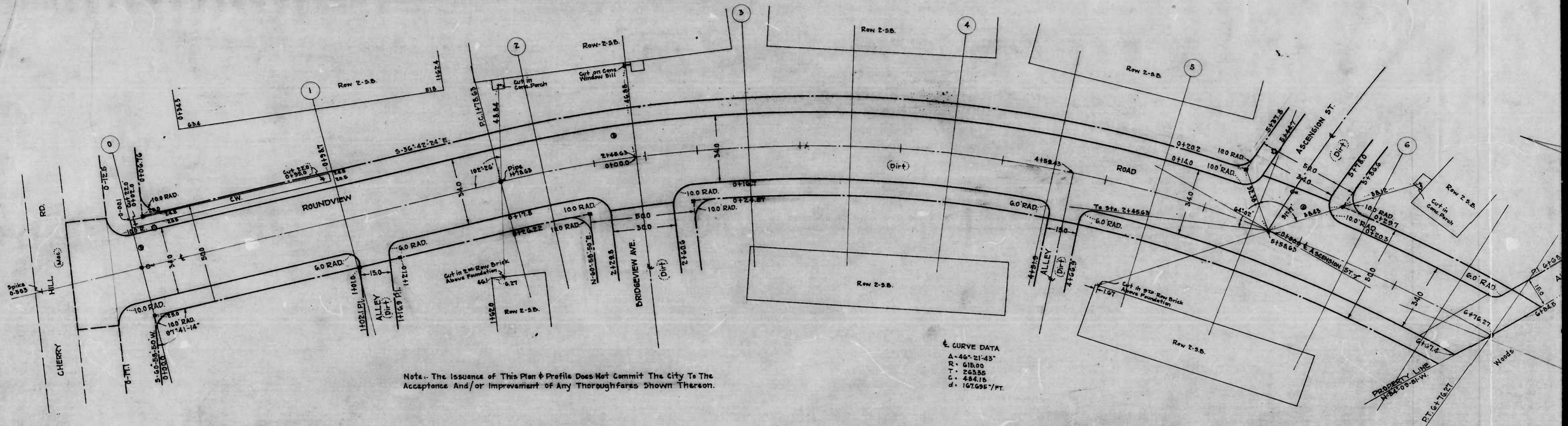
APPROVED: *W. H. D. Fisher*
 HIGHWAYS ENGINEER

APPROVED: *Edward J. ...*
 ENGR. - PLANS & SURVEYS

APPROVED: *Nathan ...*
 CHIEF ENGINEER

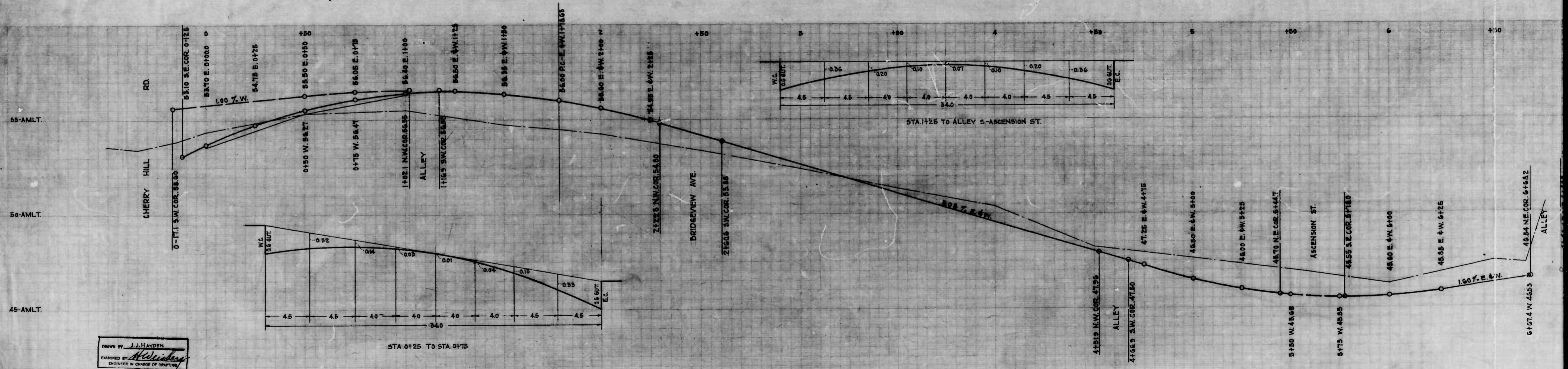
DRAWN BY: J. J. ...
 EXAMINED BY: *H. ...*
 ENGINEER IN CHARGE OF DRAWING





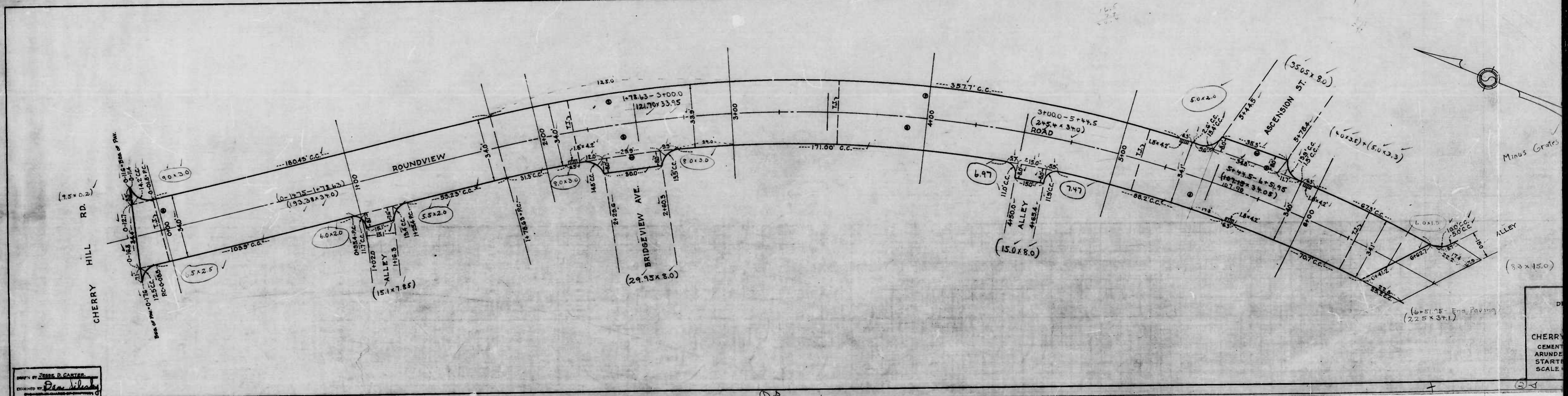
CURVE DATA
 $\Delta = 46^\circ 21' 43''$
 $R = 618.00$
 $T = 263.55$
 $C = 484.16$
 $d = 167.606'/ft.$

Note: The issuance of This Plan & Profile Does Not Commit The City To The Acceptance And/or Improvement of Any Thoroughfares Shown Thereon.



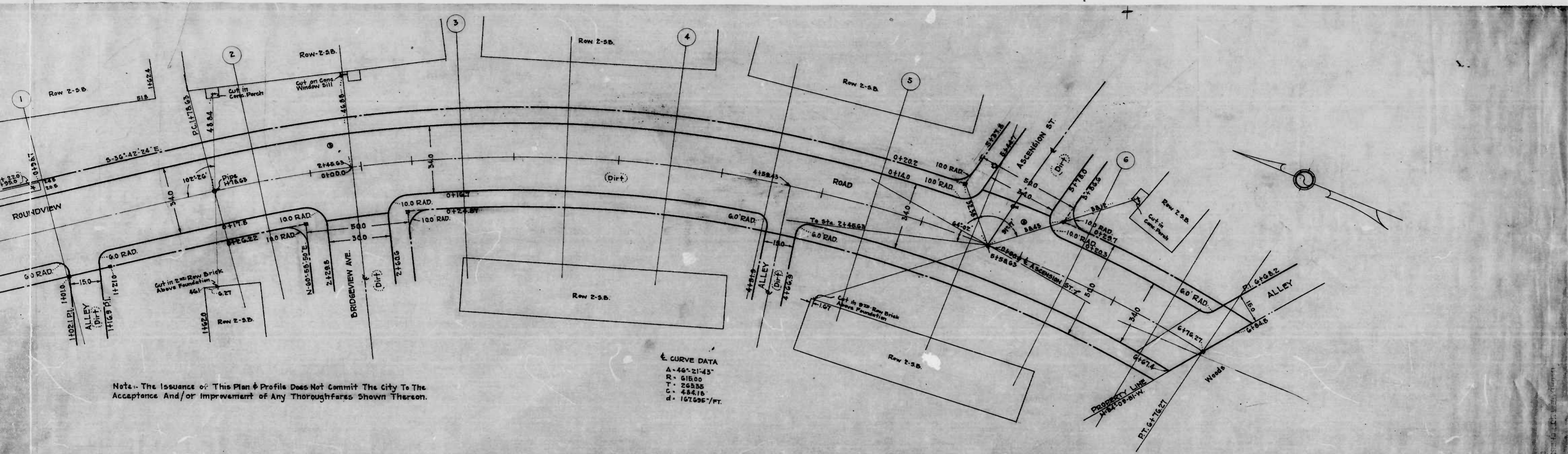
DRAWN BY J.J. HAYDEN
 EXAMINED BY *[Signature]*
 ENGINEER IN CHARGE OF DRAFTING

ROUNDVIEW RD - CHERRY HILL 40' - 1/2" OF CURVE RADIUS 21' CORN. IN 1988 X



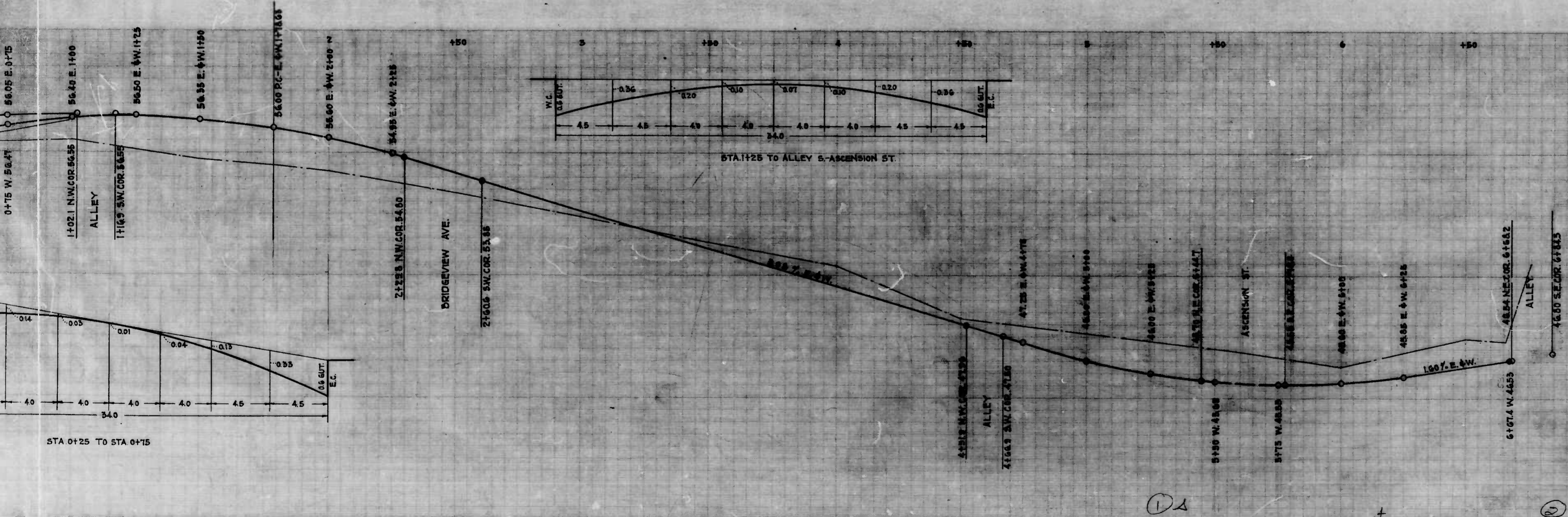
DRAWN BY **JESSE D. CARTER**
 EXAMINED BY **Don [Signature]**
 ENGINEER - PROFESSIONAL SEAL

CHERRY
 CEMENT
 ARUNDE
 STARTS
 SCALE



Note: The issuance of This Plan & Profile Does Not Commit The City To The Acceptance And/or Improvement of Any Thoroughfares Shown Thereon.

CURVE DATA
 A - 46° 21' 43"
 R - 618.00
 T - 268.95
 C - 484.16
 d - 107.095'/FT.



CITY OF BALTIMORE
 DEPARTMENT OF PUBLIC WORKS
 BUREAU OF HIGHWAYS
 PLAN & PROFILE
 ROUNDVIEW RD - CHERRY HILL RD. TO AL S. ASCENSION ST.
 CONT. NO 788

PLAN - 1" = 200'
 PROFILE - 1" = 20.0'
 VERT. - 1" = 2.0'

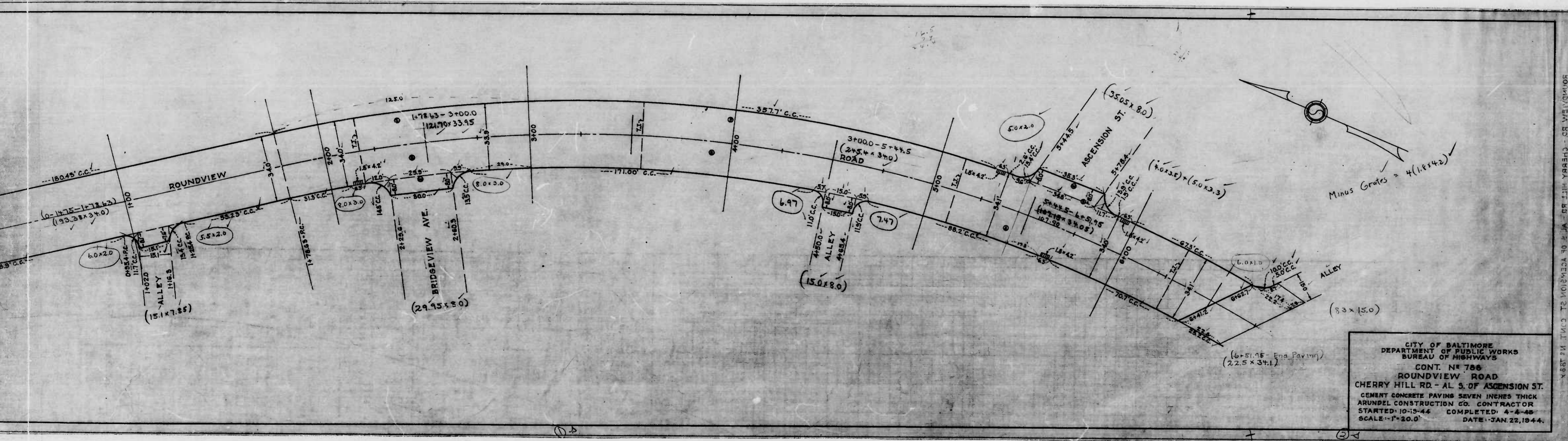
BOOK NO. C. 788
 SEPT. 26, 1944

APPROVED: *[Signature]*
 ASSOCIATE ENGINEER

APPROVED: *[Signature]*
 ENGINEER

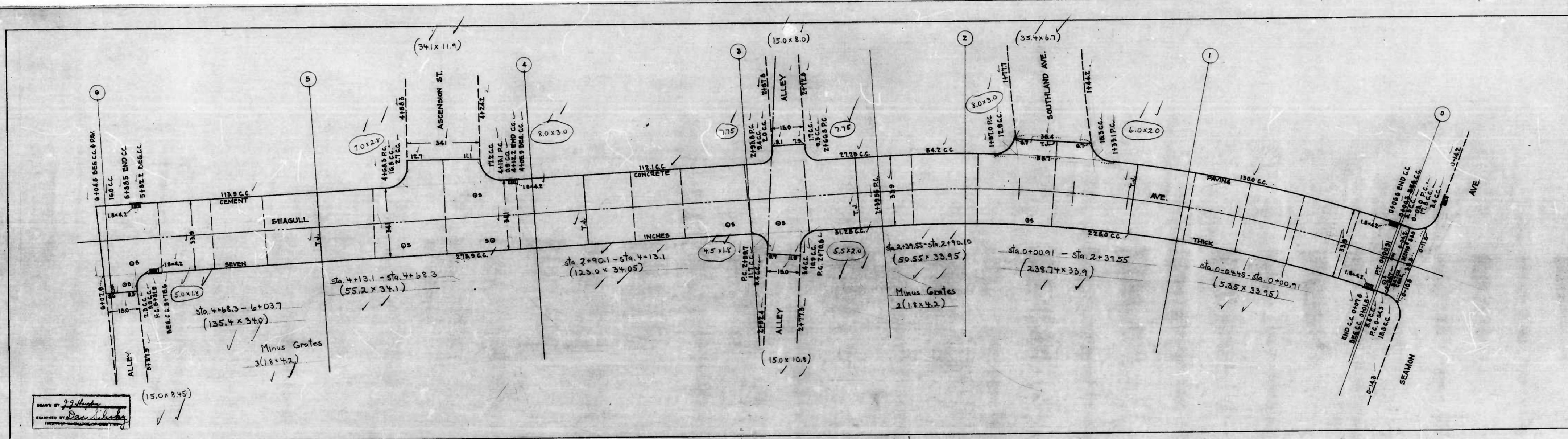
APPROVED: *[Signature]*
 HIGHWAYS ENGINEER

APPROVED: *[Signature]*
 CHIEF ENGINEER

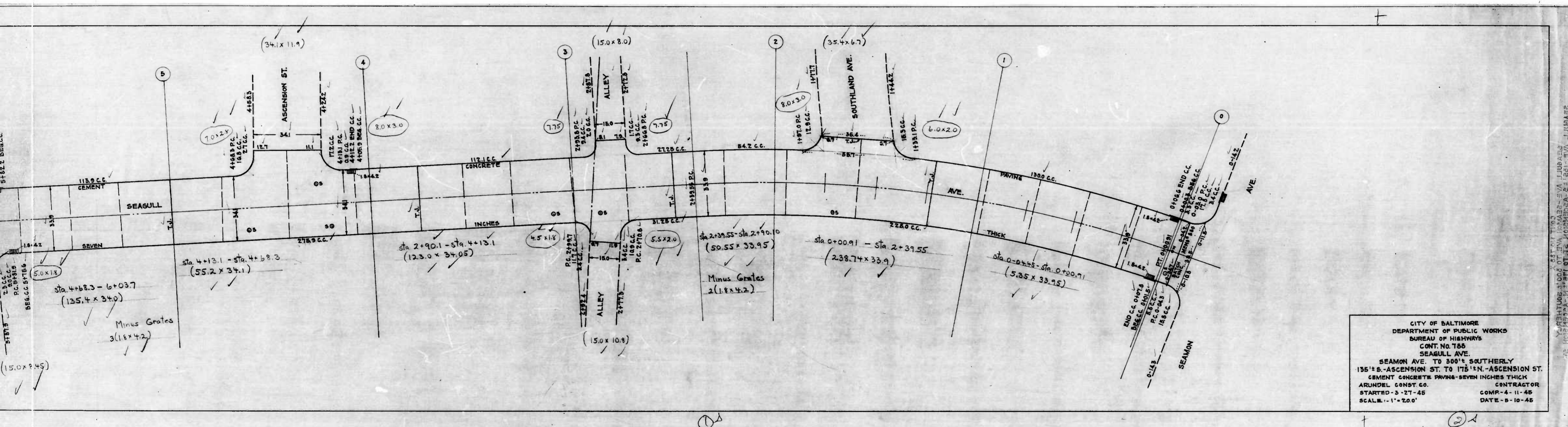


ROUNDVIEW RD - CHERRY HILL RD - AL. S. OF ASCENSION ST. CIVIL NO. 1887

ВЕРНИТЬ ВАШЕ ПОСЛАНИЕ В ЛО ЛИБИ-УЩЕДИТЕЛИ
ВЕРНИТЬ ВАШЕ ПОСЛАНИЕ В ЛО ЛИБИ-УЩЕДИТЕЛИ
ВЕРНИТЬ ВАШЕ ПОСЛАНИЕ В ЛО ЛИБИ-УЩЕДИТЕЛИ

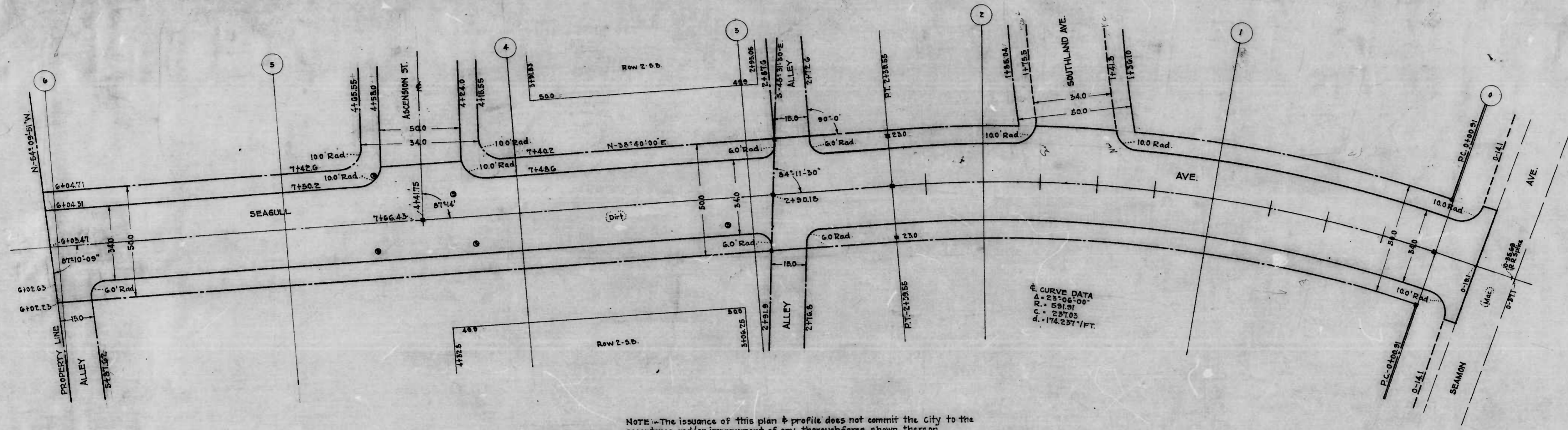


CITY OF BALTIMORE
 DEPARTMENT OF PUBLIC WORKS
 BUREAU OF HIGHWAYS
 CONT. NO. 165
 SEAGULL AVE.
 SEAMON AVE. TO 300' E.
 135' S. - ASCENSION ST. TO 175'
 CEMENT CONCRETE PAVING - 50'
 ARUNDEL CONST. CO.
 STARTED - 3-27-45
 SCALE - 1" = 20'

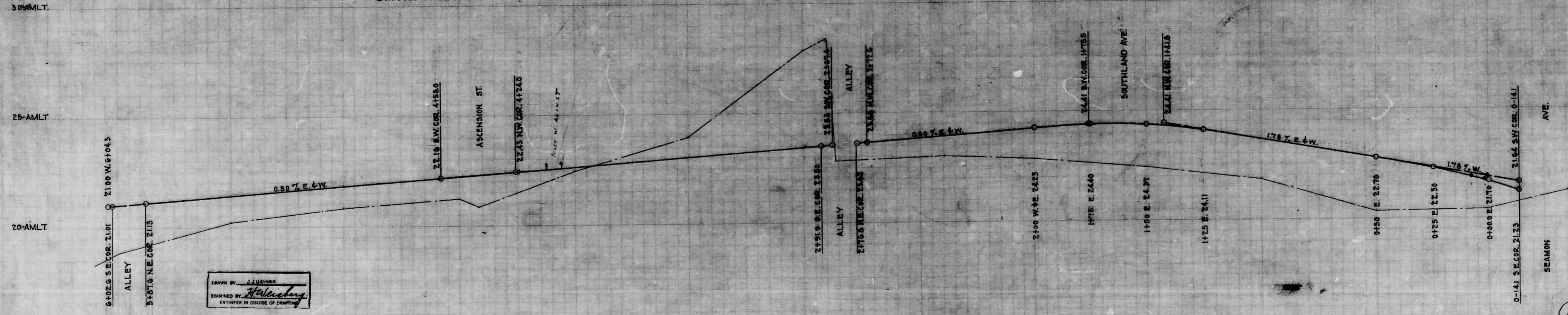
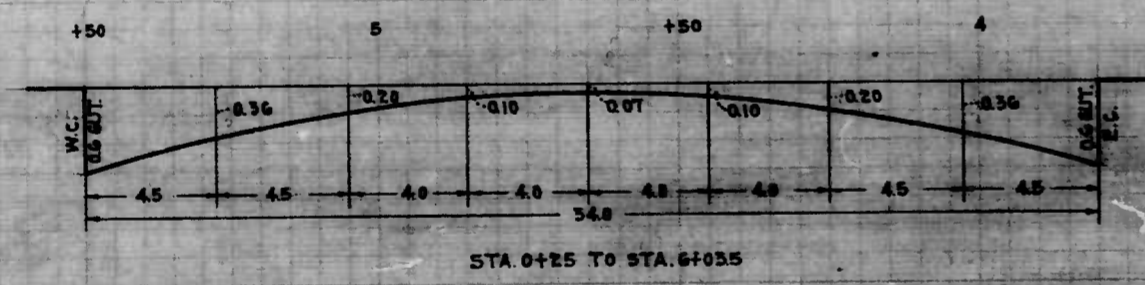


CITY OF BALTIMORE
 DEPARTMENT OF PUBLIC WORKS
 BUREAU OF HIGHWAYS
 CONT. NO. 755
 SEAGULL AVE.
 SEAMON AVE. TO 300' SOUTHERLY
 155' S. ASCENSION ST. TO 175' N. ASCENSION ST.
 CEMENT CONCRETE PAVING - SEVEN INCHES THICK
 ARUNDEL CONST. CO. CONTRACTOR
 STARTED - 3-27-45 COMP. - 4-11-45
 SCALE - 1" = 20.0' DATE - 5-10-45

REVISIONS: 1. 5/10/45 - AS-CORRECTED PER CITY ENGINEER'S ORDER
 2. 5/10/45 - AS-CORRECTED PER CITY ENGINEER'S ORDER
 3. 5/10/45 - AS-CORRECTED PER CITY ENGINEER'S ORDER
 4. 5/10/45 - AS-CORRECTED PER CITY ENGINEER'S ORDER
 5. 5/10/45 - AS-CORRECTED PER CITY ENGINEER'S ORDER
 6. 5/10/45 - AS-CORRECTED PER CITY ENGINEER'S ORDER
 7. 5/10/45 - AS-CORRECTED PER CITY ENGINEER'S ORDER
 8. 5/10/45 - AS-CORRECTED PER CITY ENGINEER'S ORDER
 9. 5/10/45 - AS-CORRECTED PER CITY ENGINEER'S ORDER
 10. 5/10/45 - AS-CORRECTED PER CITY ENGINEER'S ORDER
 11. 5/10/45 - AS-CORRECTED PER CITY ENGINEER'S ORDER
 12. 5/10/45 - AS-CORRECTED PER CITY ENGINEER'S ORDER
 13. 5/10/45 - AS-CORRECTED PER CITY ENGINEER'S ORDER
 14. 5/10/45 - AS-CORRECTED PER CITY ENGINEER'S ORDER
 15. 5/10/45 - AS-CORRECTED PER CITY ENGINEER'S ORDER
 16. 5/10/45 - AS-CORRECTED PER CITY ENGINEER'S ORDER
 17. 5/10/45 - AS-CORRECTED PER CITY ENGINEER'S ORDER
 18. 5/10/45 - AS-CORRECTED PER CITY ENGINEER'S ORDER
 19. 5/10/45 - AS-CORRECTED PER CITY ENGINEER'S ORDER
 20. 5/10/45 - AS-CORRECTED PER CITY ENGINEER'S ORDER



NOTE - The issuance of this plan & profile does not commit the City to the acceptance and/or improvement of any thoroughfares shown thereon.



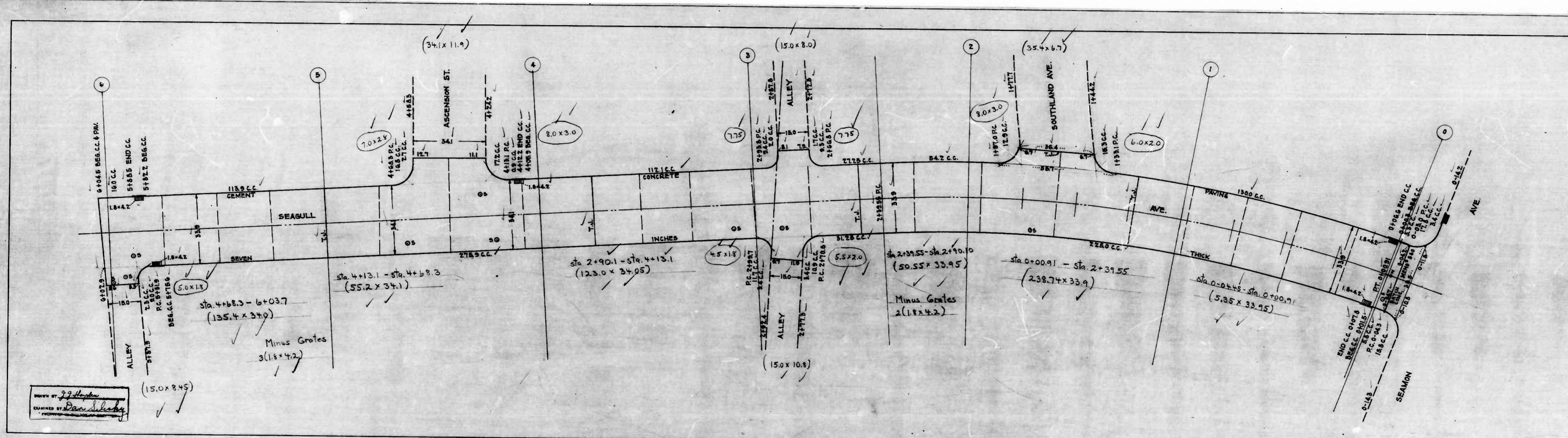
DRAWN BY: J. J. HAYDEN
 ENGINEER IN CHARGE OF DRAWING

CITY OF BALTIMORE
 DEPARTMENT OF PUBLIC WORKS
 BUREAU OF HIGHWAYS
 PLAN & PROFILE
 SEAGULL AVE - SEAMON AVE TO 300' SOUTHWEST
 SEAGULL AVE - 125' ± S. OF ASCENSION ST. TO ITS 'N' END
 CONT. NO. 188
 SCALES - PLAN - 1" = 20.0'
 PROFILE - VERT. - 1" = 2.0'

APPROVED: *[Signature]*
 ASSOCIATE ENGINEER

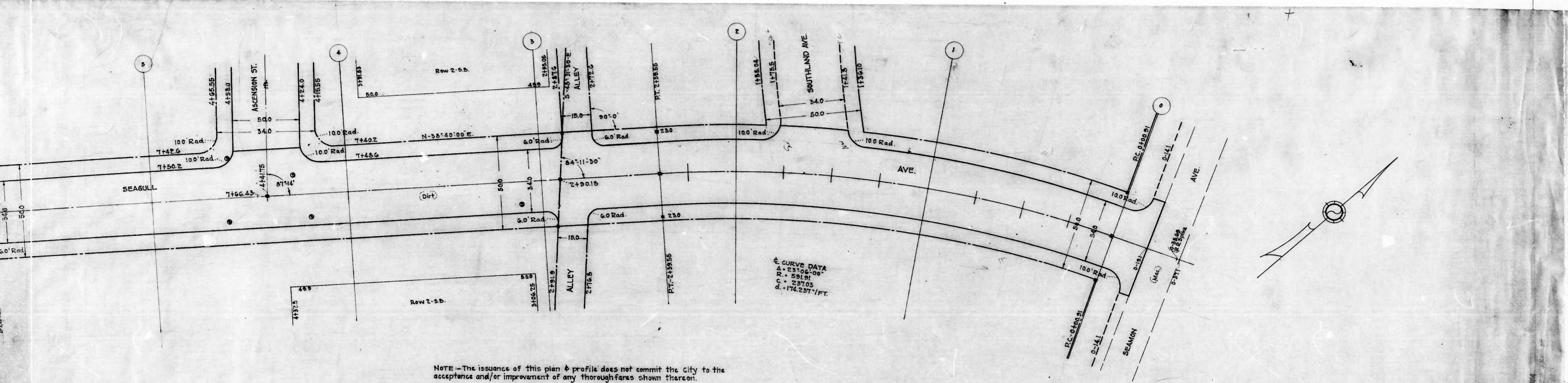
APPROVED: *[Signature]*
 HIGHWAYS ENGINEER

DESIGNED BY: J. J. HAYES
DRAWN BY: Dan Shady

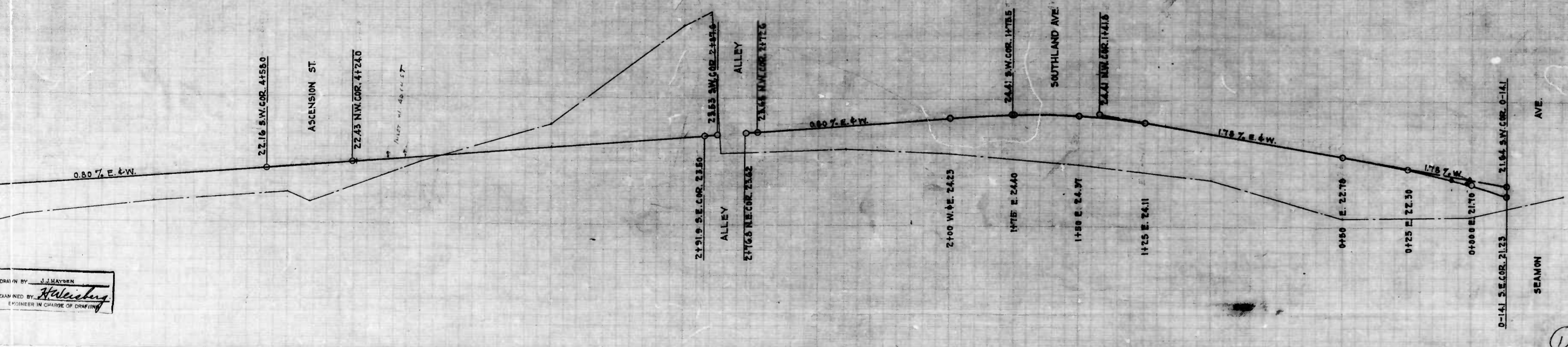
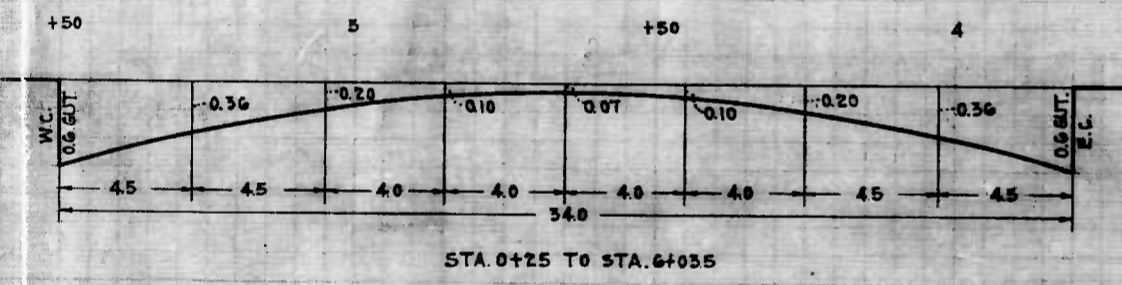


DESIGNED BY: J. J. HAYES
DRAWN BY: Dan Shady

CITY OF BALTIMORE
 DEPARTMENT OF PUBLIC WORKS
 BUREAU OF HIGHWAYS
 CONT. NO. 188
 SEAMON AVE. TO 300' SOUTH
 135' S. ASCENSION ST. TO 175' N. A
 CEMENT CONCRETE PAVING - SEVEN INCH
 ARUNDEL CONST. CO
 STARTED - 3-27-45
 SCALE - 1" = 20.0'

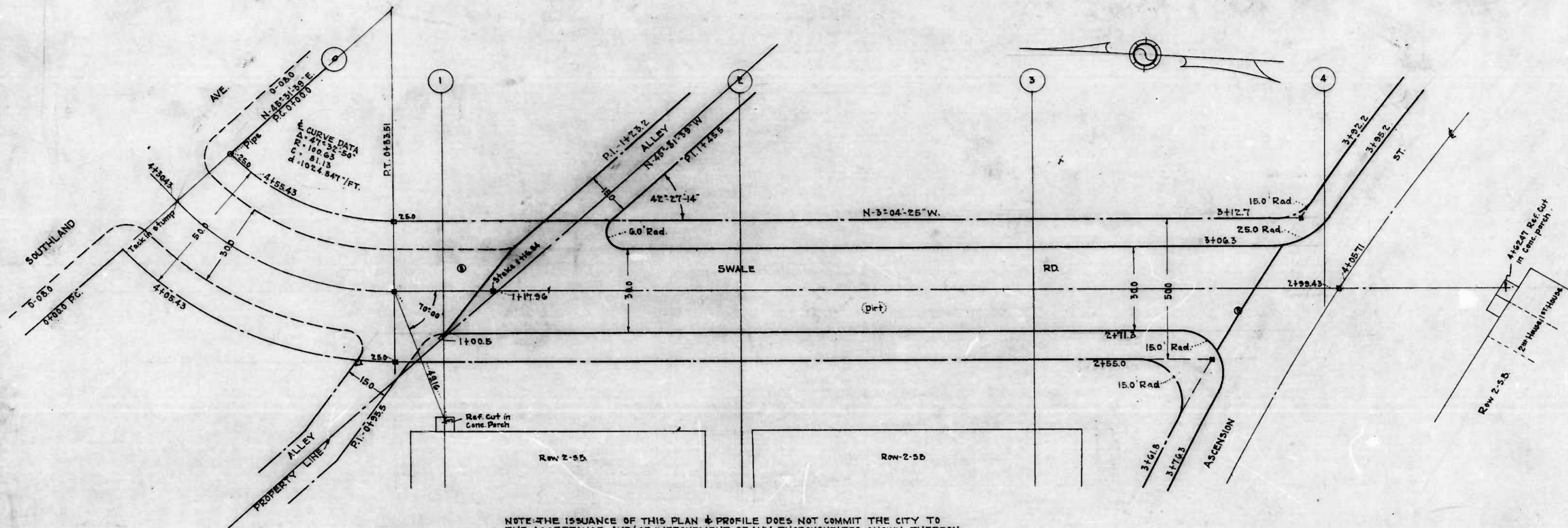


NOTE - The issuance of this plan & profile does not commit the City to the acceptance and/or improvement of any thoroughfares shown thereon.

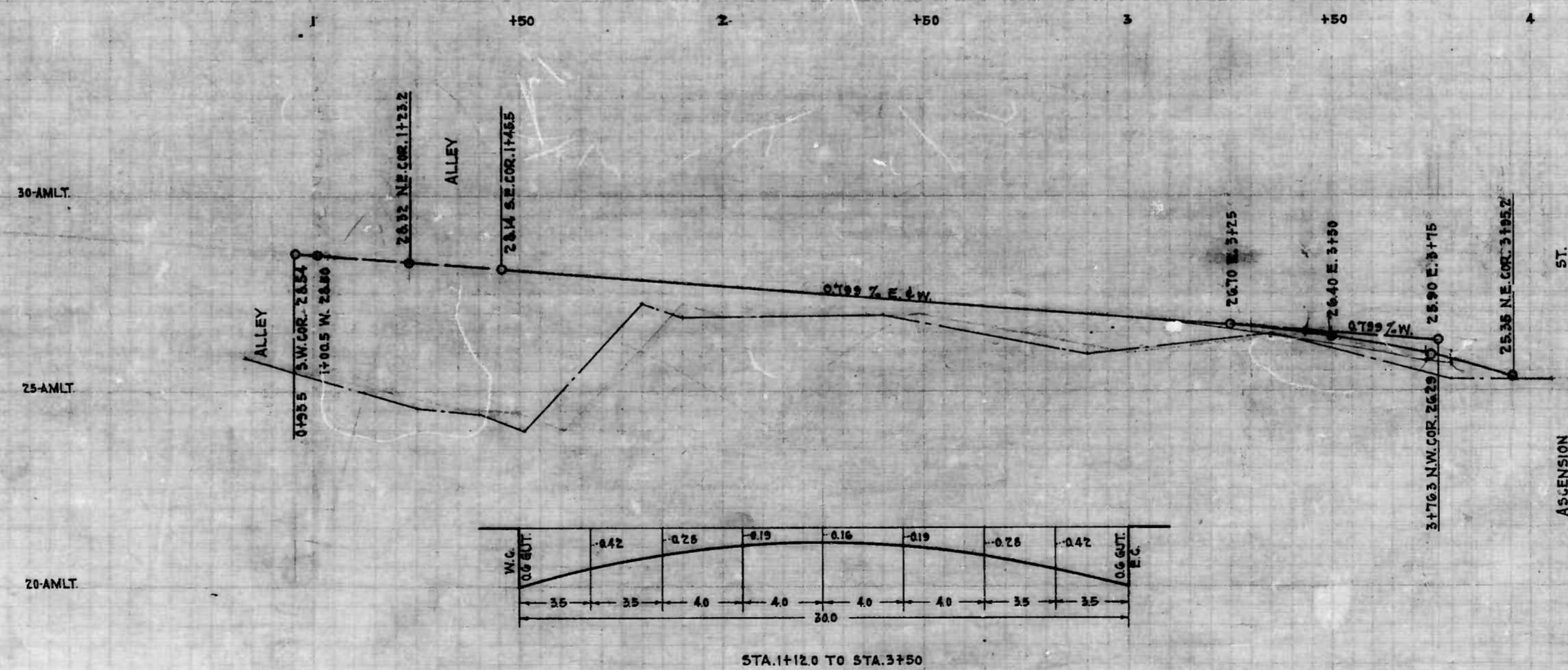


CITY OF BALTIMORE
 DEPARTMENT OF PUBLIC WORKS
 BUREAU OF HIGHWAYS
 PLAN & PROFILE
 SEAGULL AVE - SEAMON AVE TO 300' SOUTHERLY
 SEAGULL AVE - 135' E.S. OF ASCENSION ST. TO ITS N. OF ASCENSION ST.
 CONT. NO. 788
 SCALES: PLAN - 1" = 200'
 PROFILE - 1" = 200'
 VEE - 1" = 20'
 BOOK NO. C-788
 OCTOBER 11, 1944
 APPROVED: *[Signature]*
 ASSISTANT ENGINEER
 APPROVED: *[Signature]*
 CHIEF ENGINEER

DRAWN BY: J. M. WATSON
 CHECKED BY: *[Signature]*
 ENGINEER IN CHARGE OF DRAWING



NOTE: THE ISSUANCE OF THIS PLAN & PROFILE DOES NOT COMMIT THE CITY TO THE ACCEPTANCE AND/OR IMPROVEMENT OF ANY THOROUGHFARES SHOWN THEREON.



W.C. CUT	0.42	0.25	0.19	0.16	0.19	0.25	0.42	E.C. CUT
	35	35	40	40	40	35	35	

STA. 1+12.0 TO STA. 3+50

DRAWN BY: J.J. HANSEN
 CHECKED BY: *Halesberg*
 ENGINEER IN CHARGE OF DRAWING

CITY OF BALTIMORE
 DEPARTMENT OF PUBLIC WORKS
 BUREAU OF HIGHWAYS
 PLAN & PROFILE
 SWALE RD. - ASCENSION ST. TO 270' NORTHERLY
 CONT. NO. 100
 PLAN - 1" = 20'
 PROFILE - HOR. - 1" = 20'
 PROFILE - VER. - 1" = 2.0'

APPROVED: *John J. Hansen*
 ASSOCIATE ENGINEER
 APPROVED: *Edward J. Fisher*
 HIGHWAYS ENGINEER
 APPROVED: *Edward J. Fisher*
 ENGR. - PLAN & SURVEYS
 APPROVED: *William C. Smith*
 CHIEF ENGINEER

SWALE RD. - ASCENSION ST. TO 270' NORTHERLY
 CONT. NO. 100

