

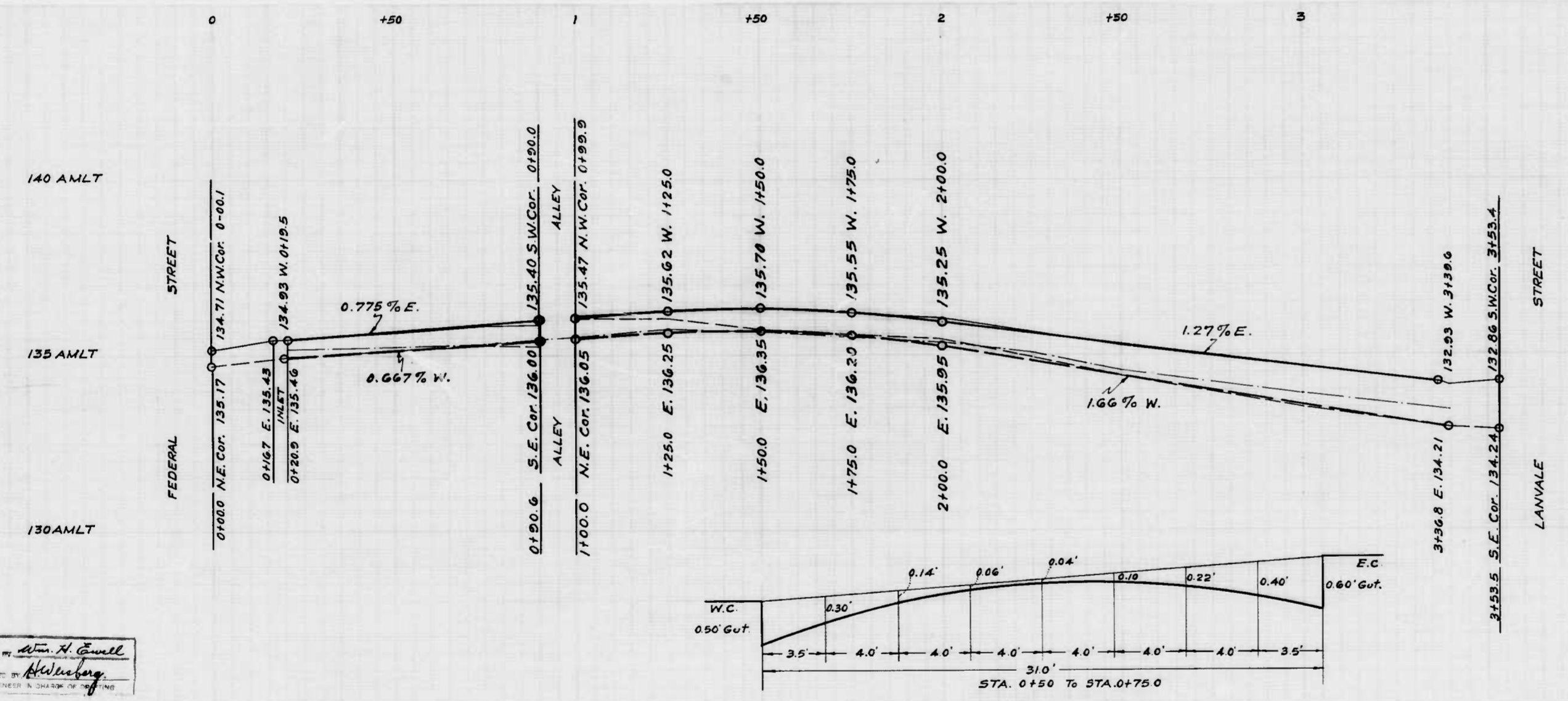
PLAT N°
 HOUSE OR DEV. LOT N°
 APPEAL TAX COURT LOT N°
 WARD 8
 SECTION 21
 BLOCK 1473

FILED *Sept 8-1924*
 BUREAU OF HIGHWAYS
 PER *J.P.P.*

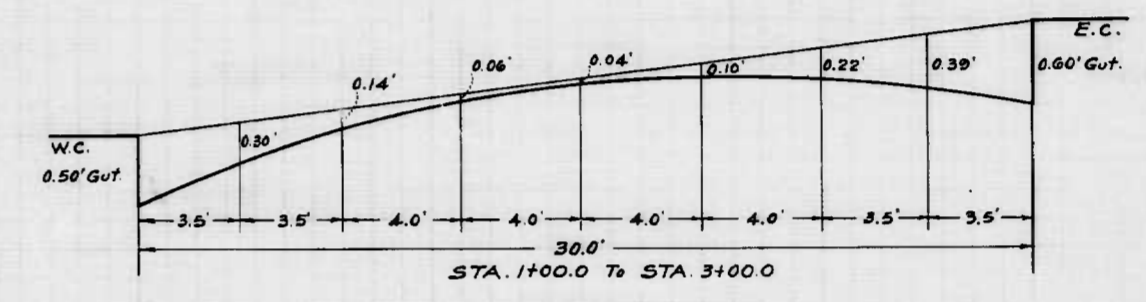
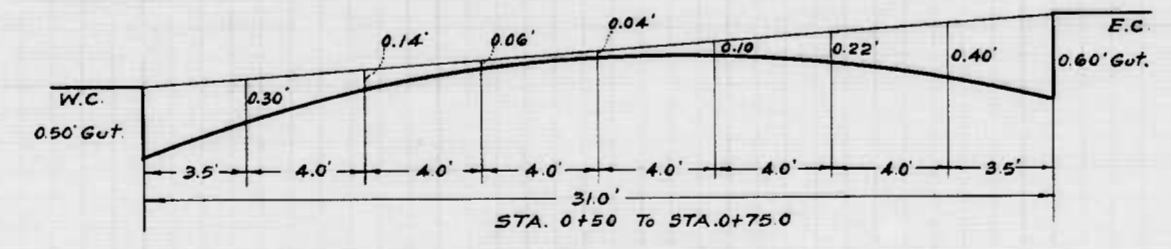
CITY OF BALTIMORE
 DEPARTMENT OF PUBLIC WORKS
 BUREAU OF HIGHWAYS
 ASSESSMENT PLAT N° 565 A.
 BRADFORD ST.-FEDERAL ST.-LANVALE ST.
 SCALE: 1" = 20.0' 800K N° X-165
 CONT. N° 787 DATE: AUG. 15, 1924

APPROVED *Edward J. Hecker* ASSOCIATE ENGINEER
 APPROVED *W. J. J. Fisher* HIGHWAYS ENGINEER
 APPROVED *Edward J. Hecker* ENGR. PLANS & SURVEYS
 APPROVED *Nathan Smith* CHIEF ENGINEER

Edward J. Hecker
 ENGR. PLANS & SURVEYS



Drawn by *Wm. H. Gwill*
 Examined by *H. Weisberg*
 ENGINEER & SURVEYOR



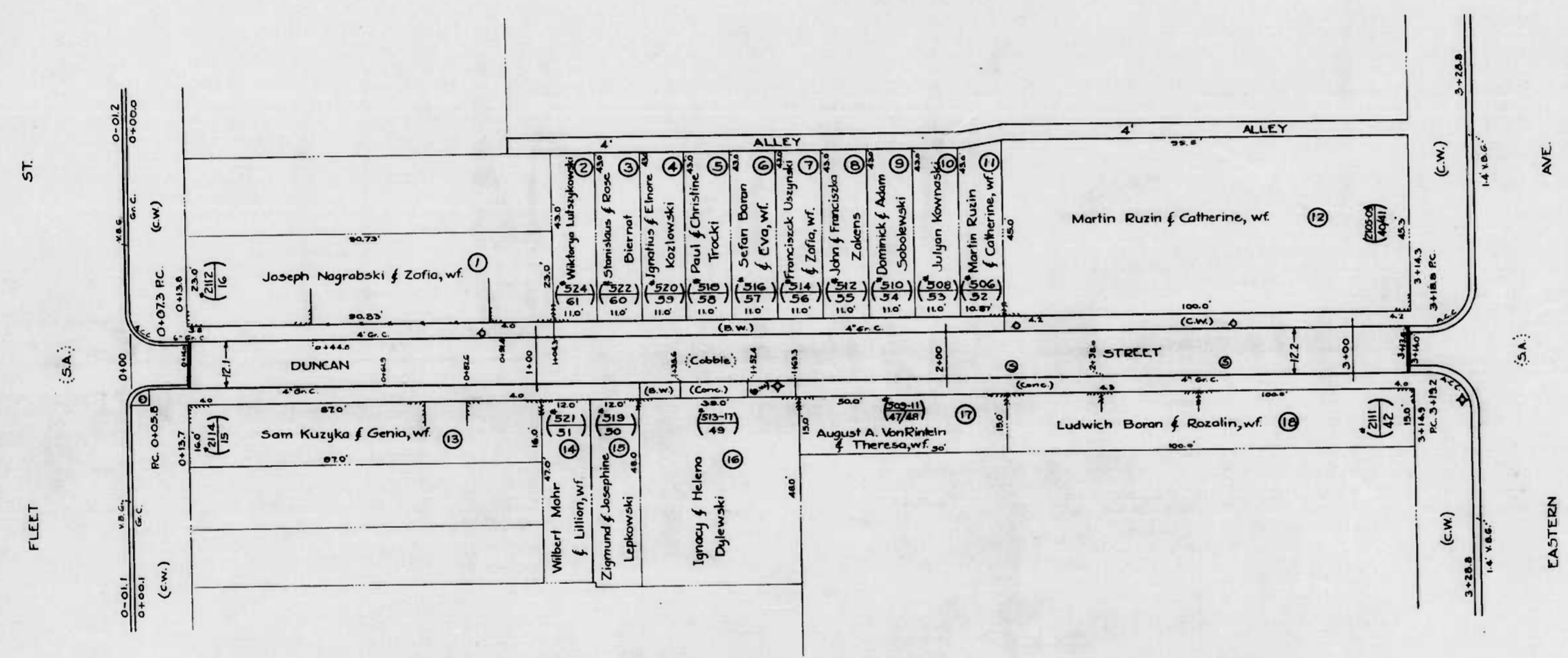
135 AMLT
130 AMLT

LANVALE STREET

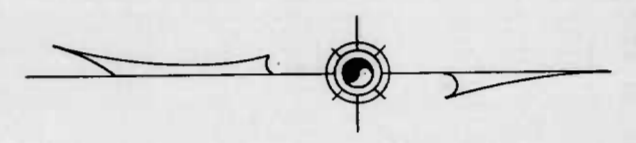
CITY OF BALTIMORE
 DEPARTMENT OF PUBLIC WORKS
 BUREAU OF HIGHWAYS
 PROFILE OF
 BRADFORD ST.-FEDERAL ST.-LANVALE ST
 HOR. 1"=20.0' DATE: JULY 27, 1944
 SCALE: VER. 1"=20.0' BOOK No. X-165
 CONT. No. 787

APPROVED *Edward H. ...* ASSOCIATE ENGINEER
 APPROVED *W. J. ...* HIGHWAYS ENGINEER
 APPROVED *Edward H. ...* ENGR. PLANS & SURVEYS
 APPROVED *Walter ...* CHIEF ENGINEER

WARD - 1 SECTION - 4 BLOCK - 1784



WARD - 1 SECTION - 4 BLOCK - 1784

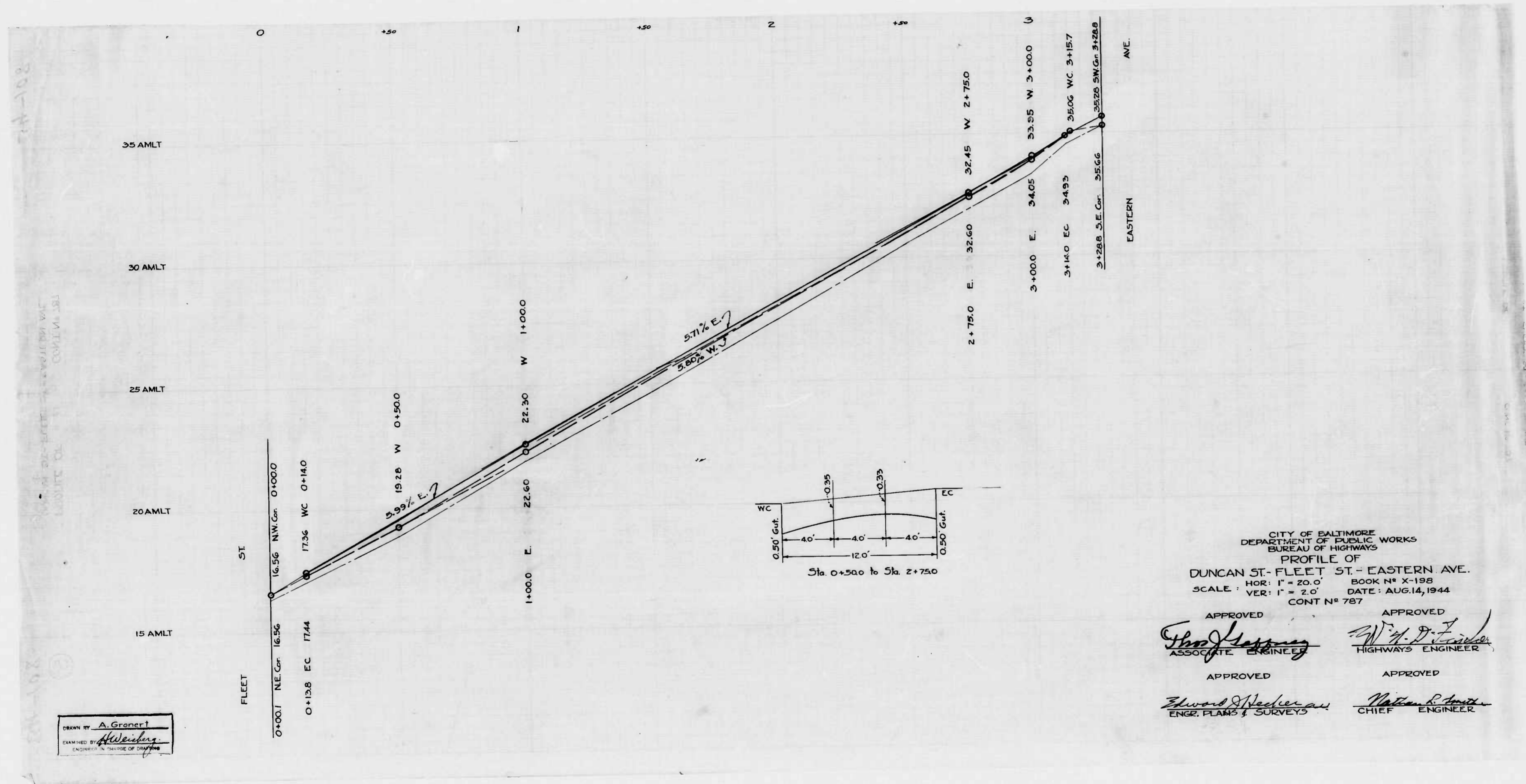


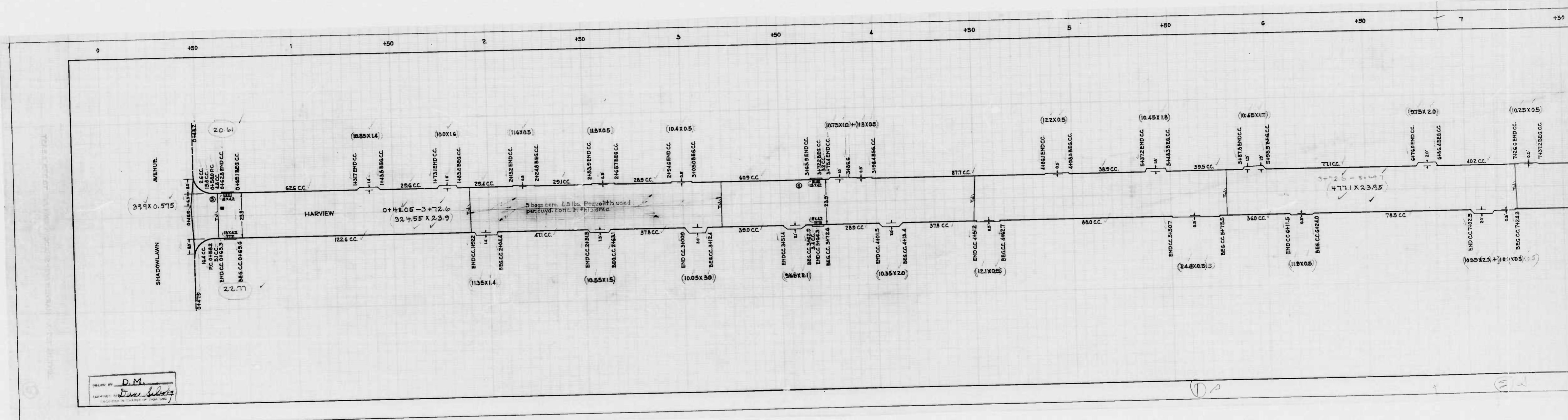
PLAT N°
 HOUSE OR DEV LOT N°
 APPEAL TAX COURT LOT N°
 WARD - 1
 SECTION - 4
 BLOCK - 1784

FILED Sept 8-1944
 BUREAU OF HIGHWAYS
 PER [Signature]

CITY OF BALTIMORE
 DEPARTMENT OF PUBLIC WORKS
 BUREAU OF HIGHWAYS
 ASSESSMENT PLAT N° 568-A
 DUNCAN ST - FLEET ST - EASTERN AVE.
 SCALE: 1" = 200' BOOK N° X-198
 CONT N° 787 DATE: JULY 27, 1944
 APPROVED [Signature] APPROVED [Signature]
 ASSOCIATE ENGINEER HIGHWAYS ENGINEER
 APPROVED [Signature] APPROVED [Signature]
 ENGR. PLANS & SURVEYS CHIEF ENGINEER

A. Gronert
[Signature]
 ENGINEER & SURVEYOR

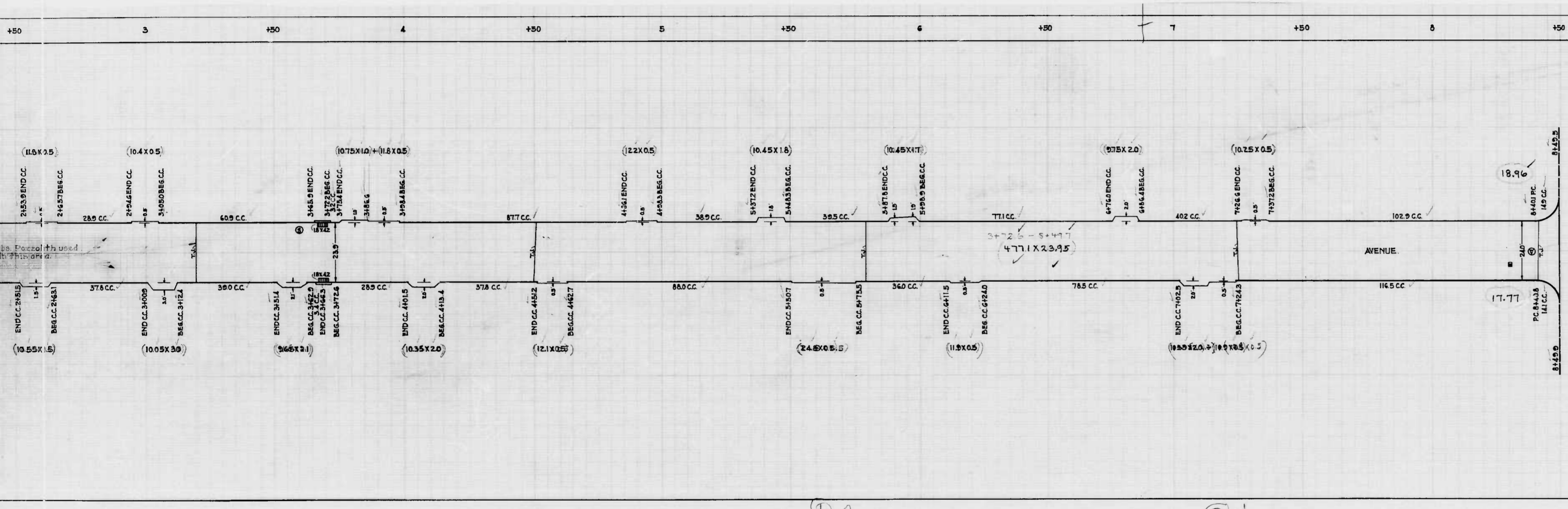




DRAWN BY D.M.
 EXAMINED BY [Signature]
 REGISTERED PROFESSIONAL ENGINEER

3+72.0 = 9+17.7
 4+77.1 X 23.95

5 bags cement 4.5 lbs. Percolith used
 per cubic foot of concrete.



CITY OF BALTIMORE
 DEPARTMENT OF PUBLIC WORKS
 BUREAU OF HIGHWAYS
 CONT. NO. 787
 HARVIEW AVENUE
 SHADOWLAWN AVENUE TO 775' ± EAST
 CEMENT CONCRETE PAVING SEVEN INCHES THICK
 ARUNDEL CONST. CO. CONTRACTOR
 STARTED: 4-16-45 COMPLETED: 5-18-45
 SCALE: 1"=20' DATE: 6-4-45

