

774

RATIO - 24

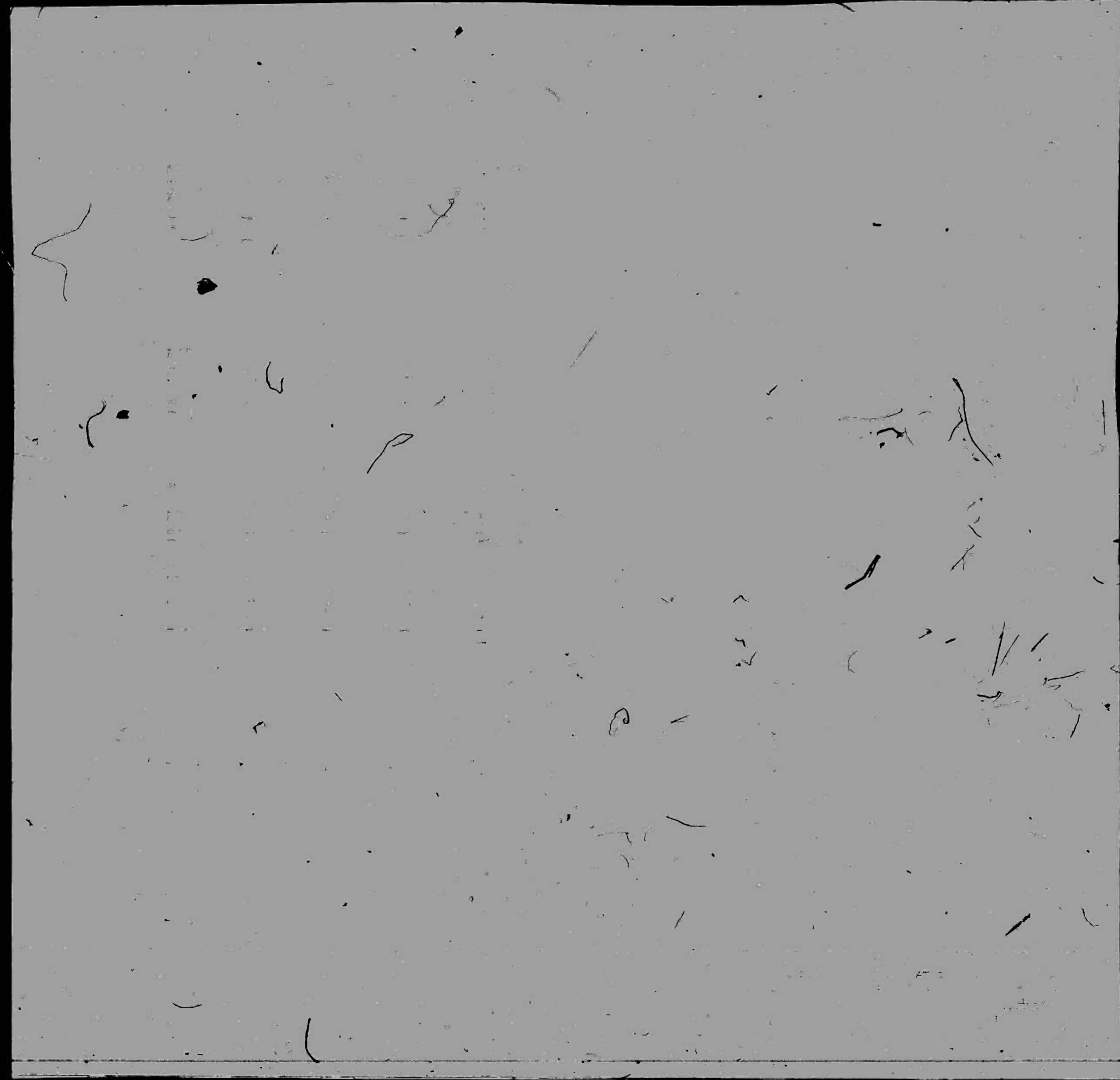
3



774

RATIO - 24

4

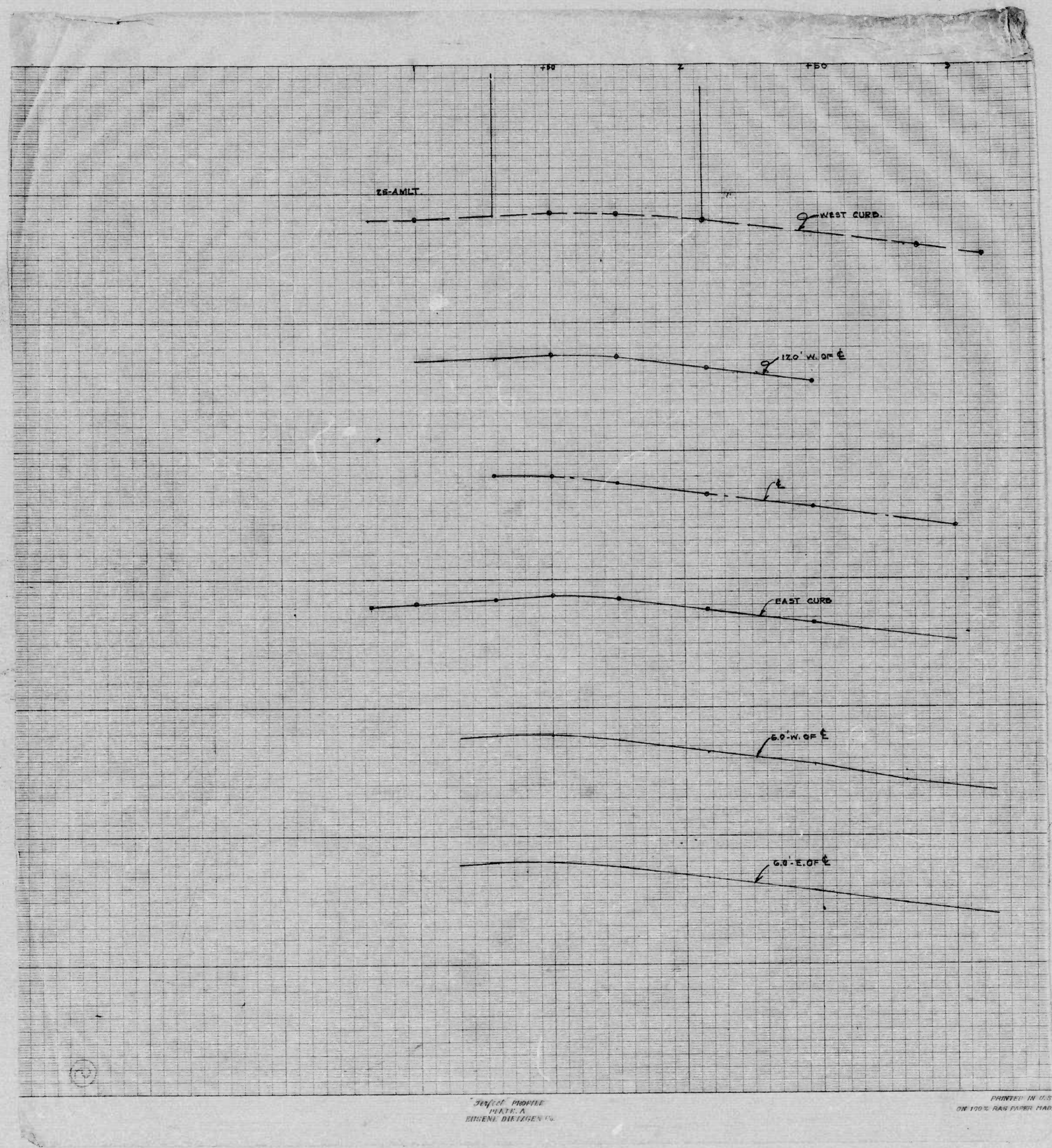




774

RATIO - 24

5

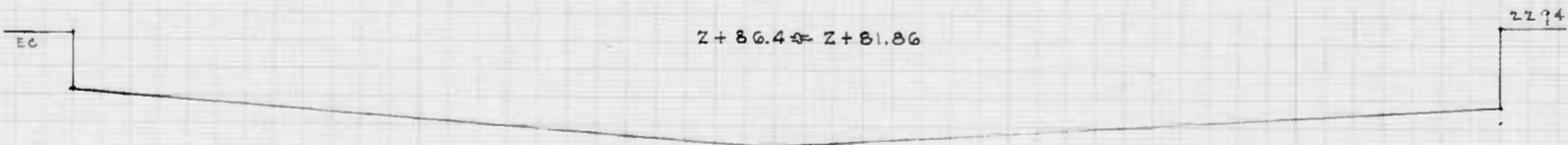
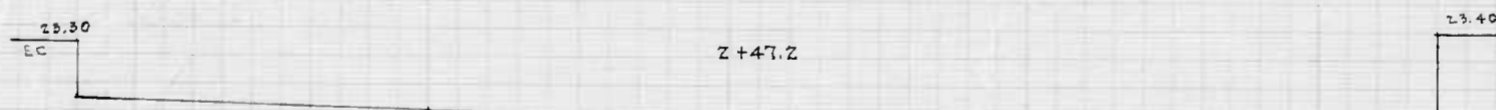
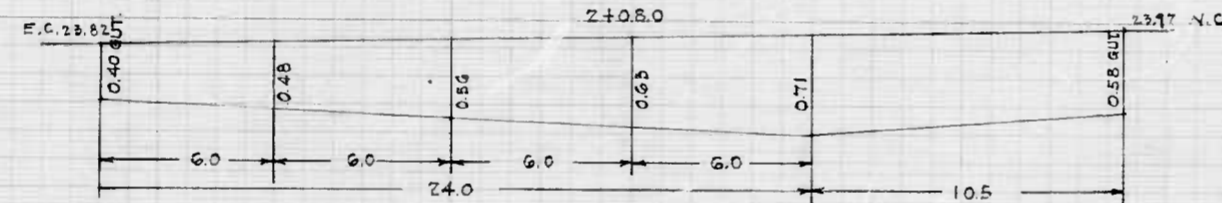
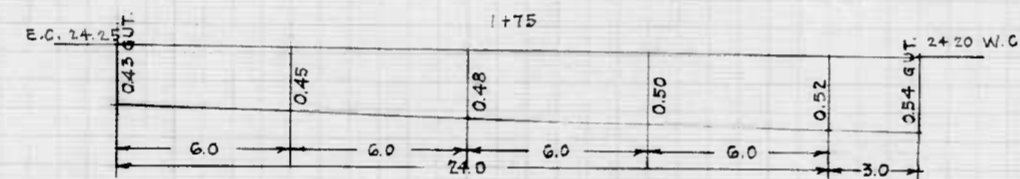
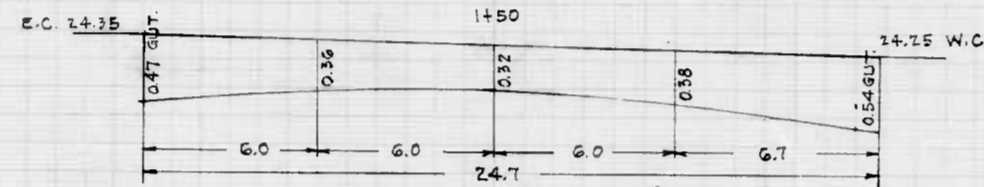
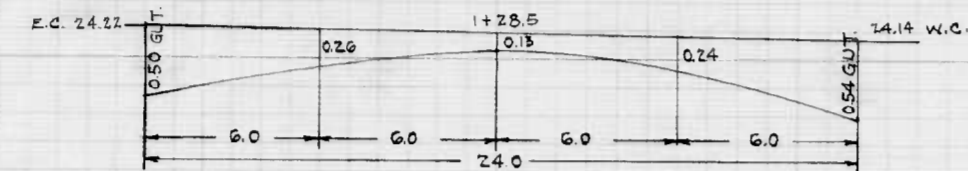










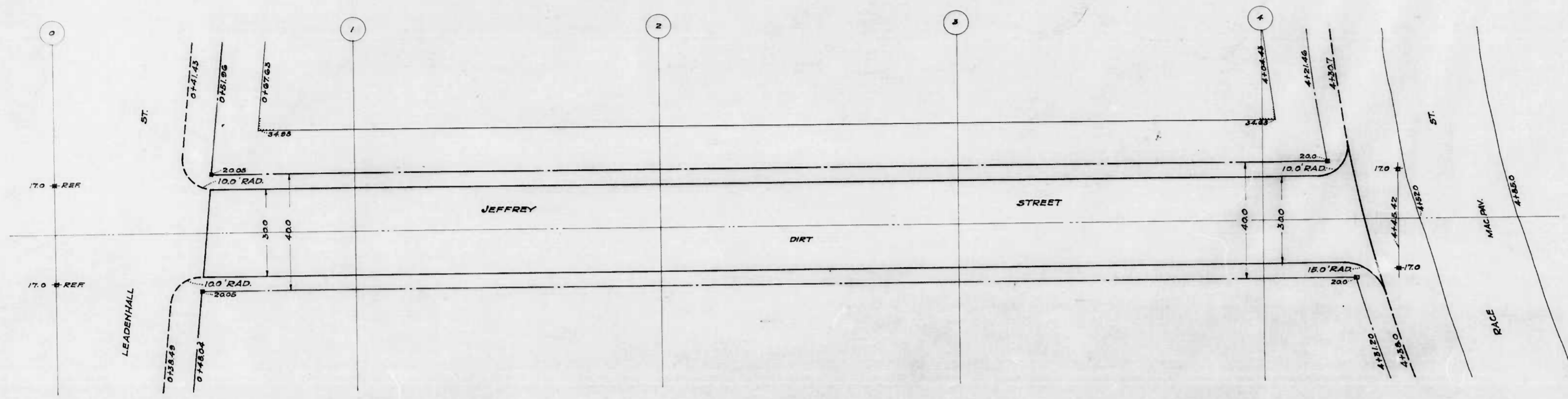


SECTIONS  
DUNDALK AVE. (W.D.) AT CITY LINE  
CONT. NO. 774

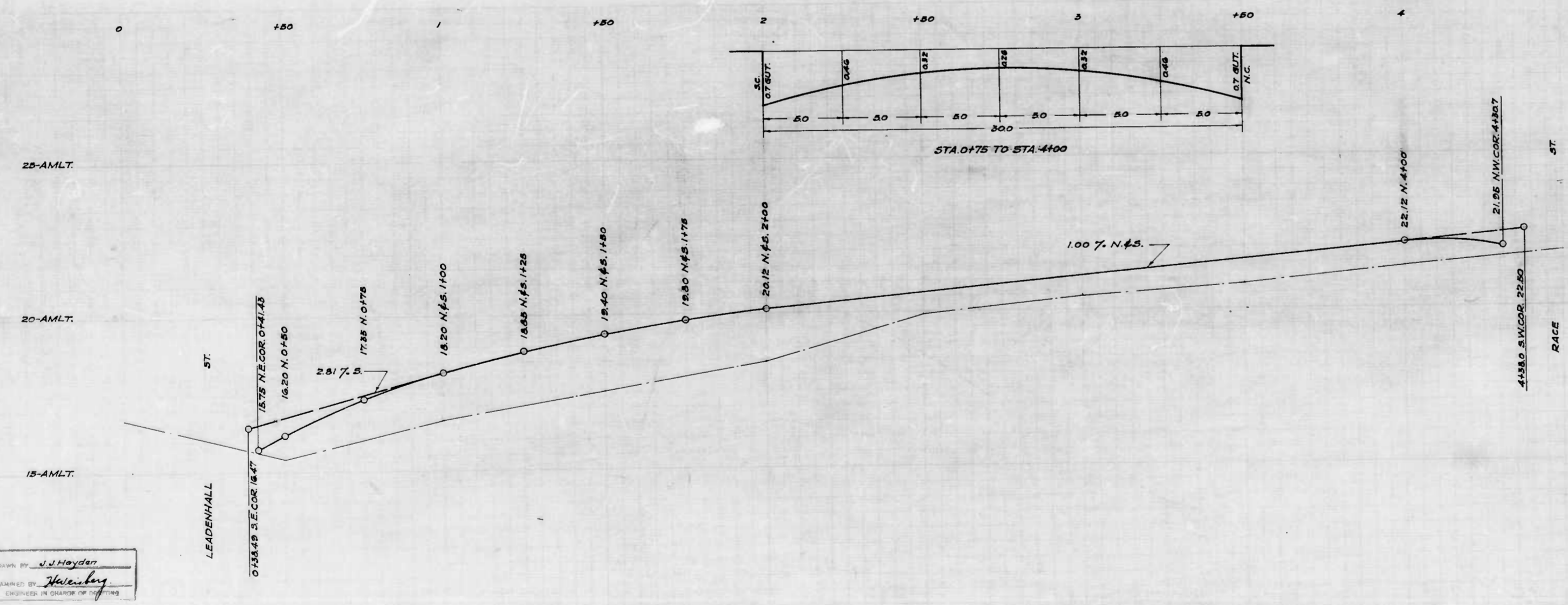
ENGINEER

PRINTED IN U.S.A.





NOTE - THE ISSUANCE OF THIS PLAN & PROFILE DOES NOT COMMIT THE CITY TO THE ACCEPTANCE AND/OR IMPROVEMENT OF ANY THOROUGHFARES SHOWN THEREON.



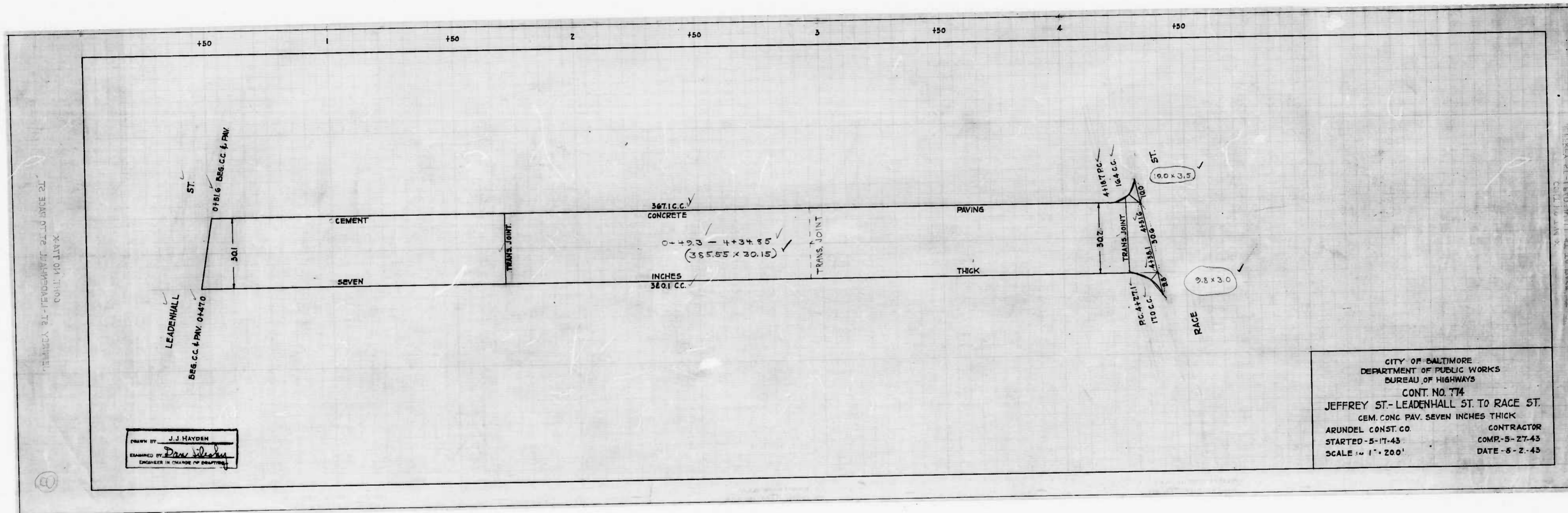
CITY OF BALTIMORE  
DEPARTMENT OF PUBLIC WORKS  
BUREAU OF HIGHWAYS  
PLAN & PROFILE  
JEFFREY ST. - RACE ST. TO LEADENHALL ST.  
CONT. NO. 774

PLAN - 1" = 200'  
SCALE: HOR. - 1" = 200'  
PROFILE - 1" = 20'

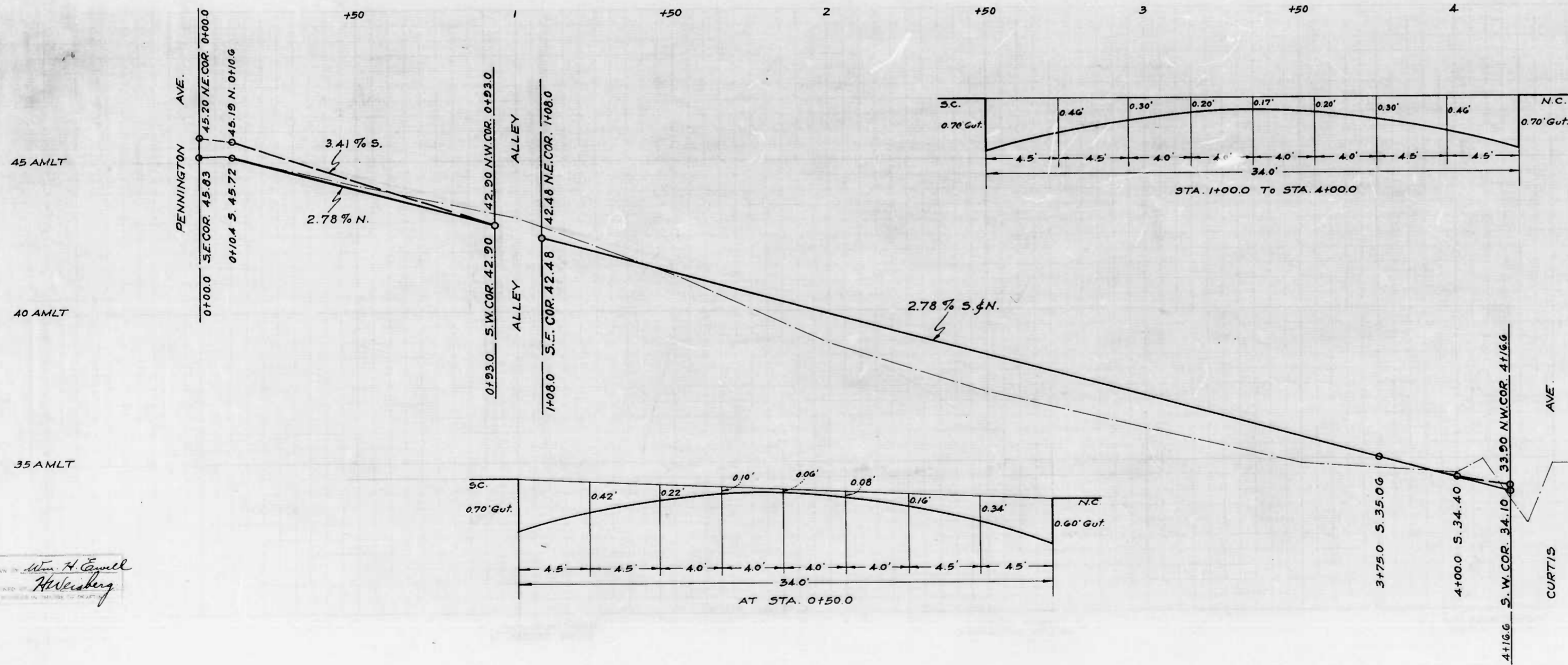
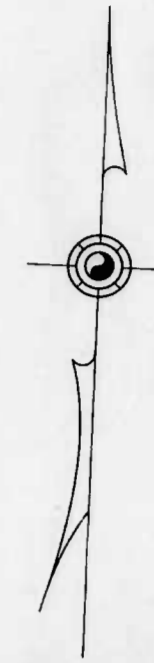
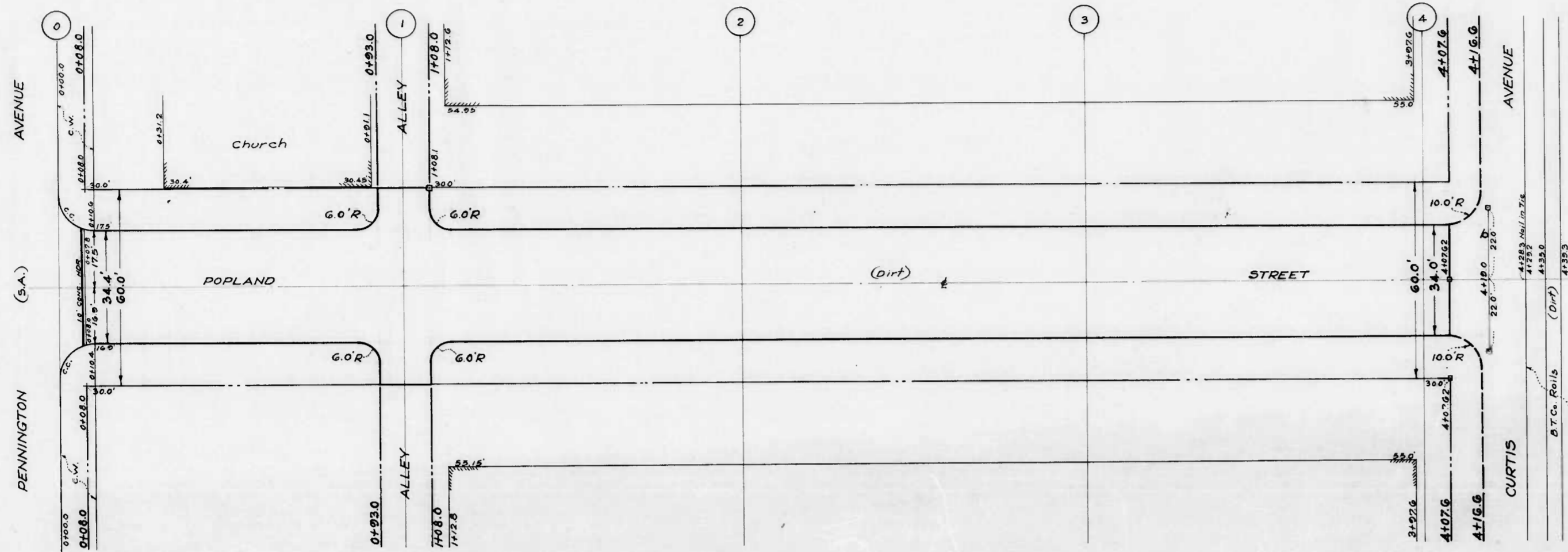
BOOK NO. 774  
DEC. 30, 1942

APPROVED: *Frank J. ...*  
APPROVED: *Edward ...*  
APPROVED: *Geo. A. ...*  
APPROVED: *James ...*

DRAWN BY: *J. J. Hayden*  
CHECKED BY: *W. ...*  
ENGINEER IN CHARGE OF DISTRICT







NOTE  
The issuance of this Plan & Profile does not commit the City to the acceptance and/or improvement of any thoroughfares shown thereon.

CITY OF BALTIMORE  
DEPARTMENT OF PUBLIC WORKS  
BUREAU OF HIGHWAYS  
PLAN & PROFILE  
POPLAND ST.-PENNINGTON AVE - CURTIS AVE.  
HOR. 1"=20.0' BOOK N° 774  
SCALE: PROF. 1"=20.0' VER. 1"=20.0'  
PLAN: 1"=20.0' DATE: OCT. 22, 1942  
CONT. N° 774

CORRECT APPROVED  
*Geo. J. Hecker* ASSOCIATE ENGINEER  
*Geo. A. Carter* HIGHWAYS ENGINEER  
*Geo. J. Hecker* ENGR. PLANS & SURVEYS  
*Geo. Cobb* CHIEF ENGINEER

*Wm. H. Egell*  
*H. Weisberg*

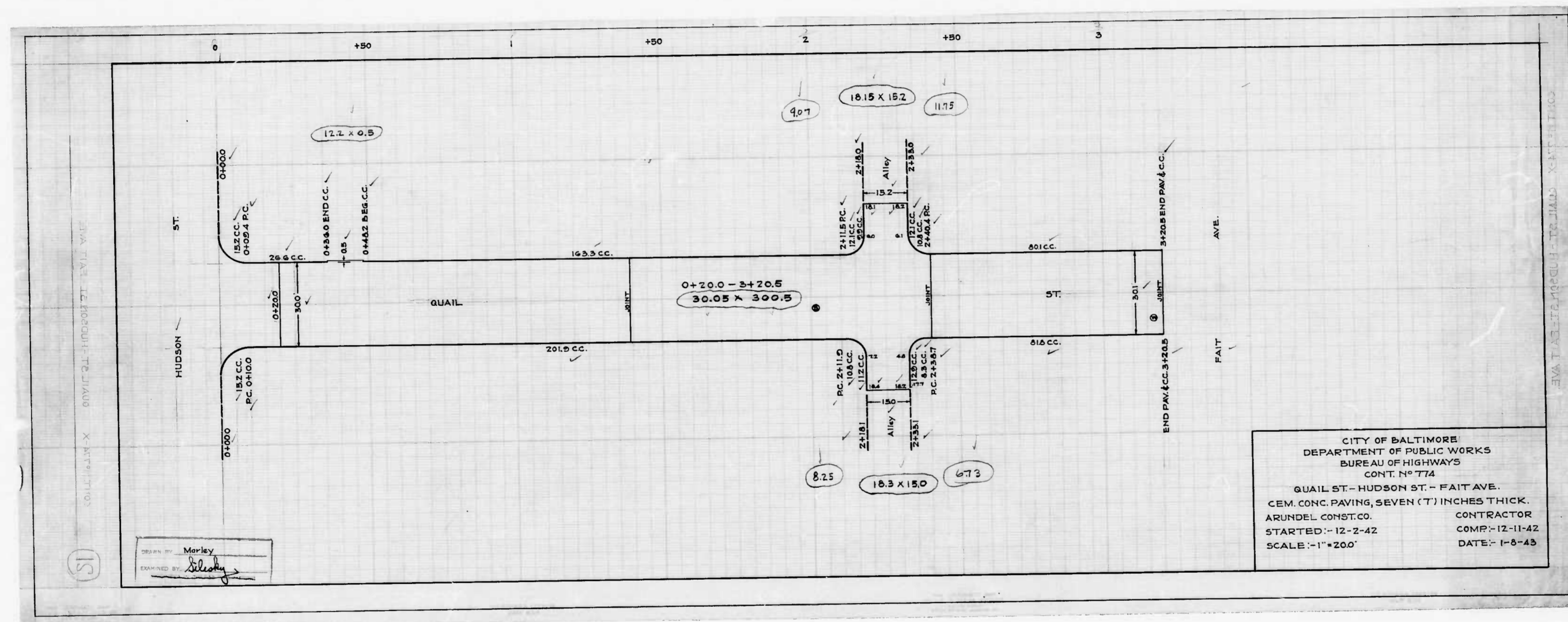








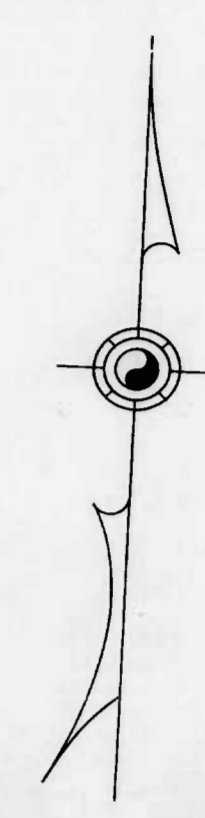
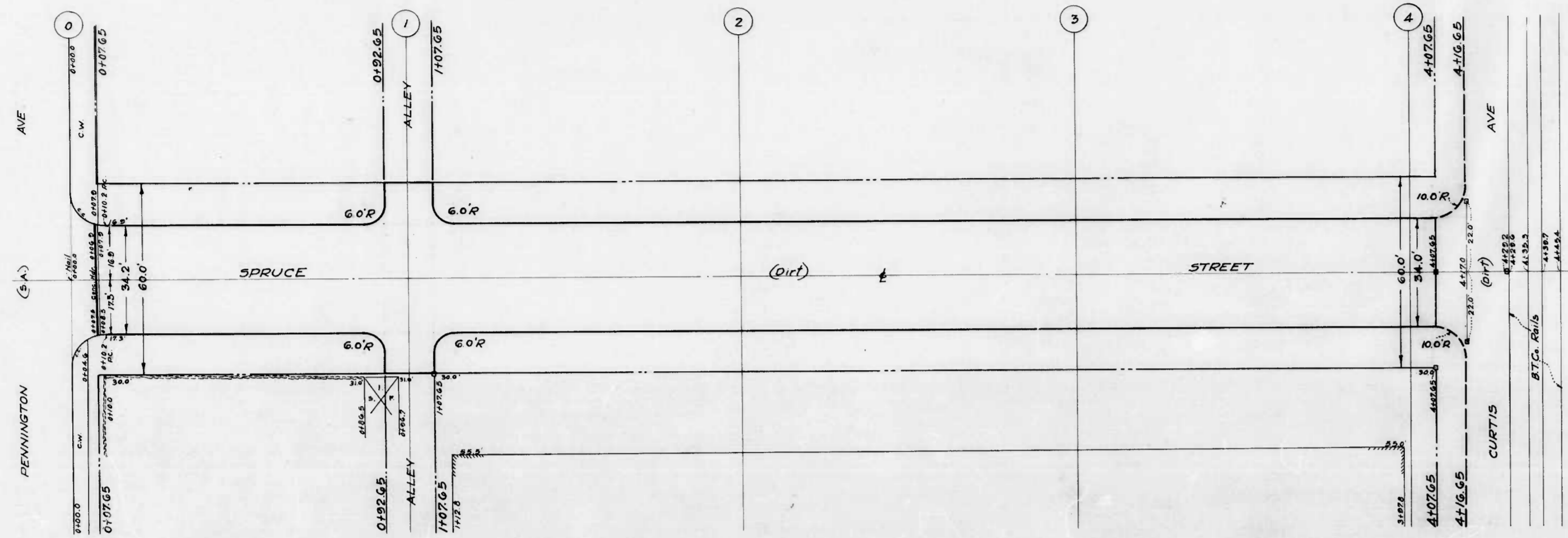




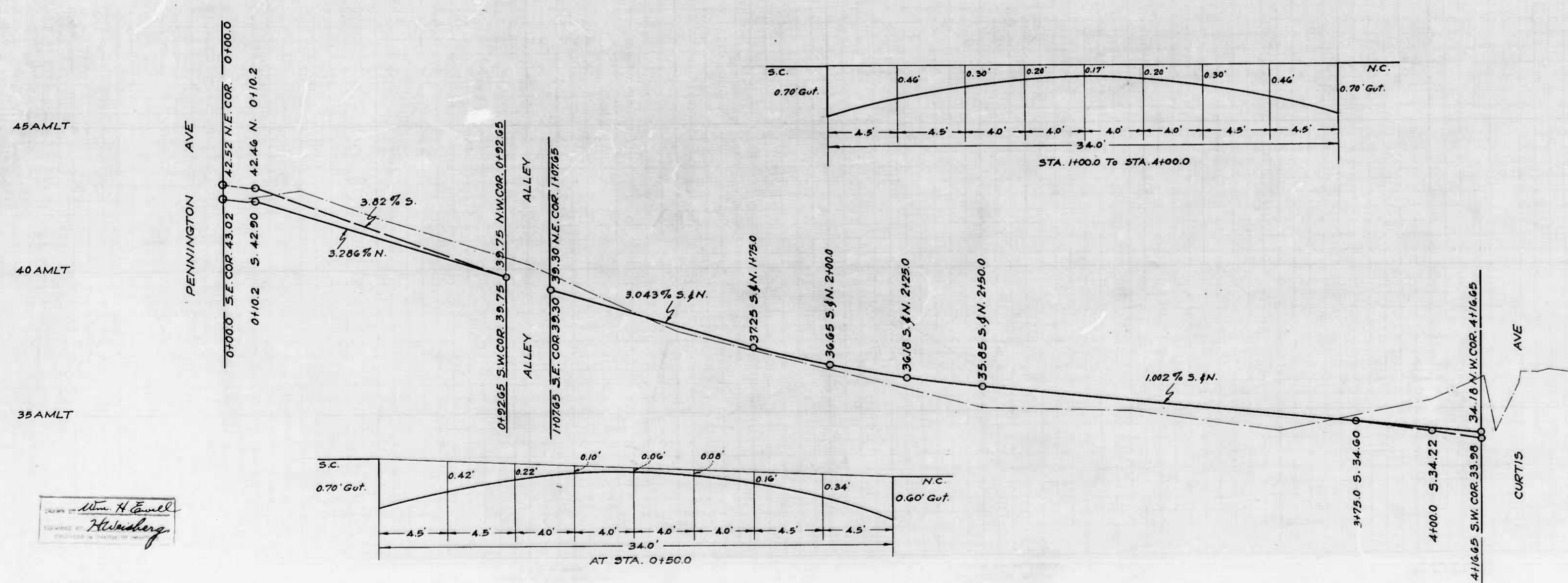
CITY OF BALTIMORE  
 DEPARTMENT OF PUBLIC WORKS  
 BUREAU OF HIGHWAYS  
 CONT. NO. 774  
 QUAIL ST. - HUDSON ST. - FAIT AVE.  
 CEM. CONC. PAVING, SEVEN (7) INCHES THICK.  
 ARUNDEL CONST. CO. CONTRACTOR  
 STARTED: 12-2-42 COMP: 12-11-42  
 SCALE: 1"=200' DATE: 1-6-43

DESIGNED BY: Marley  
 EXAMINED BY: [Signature]





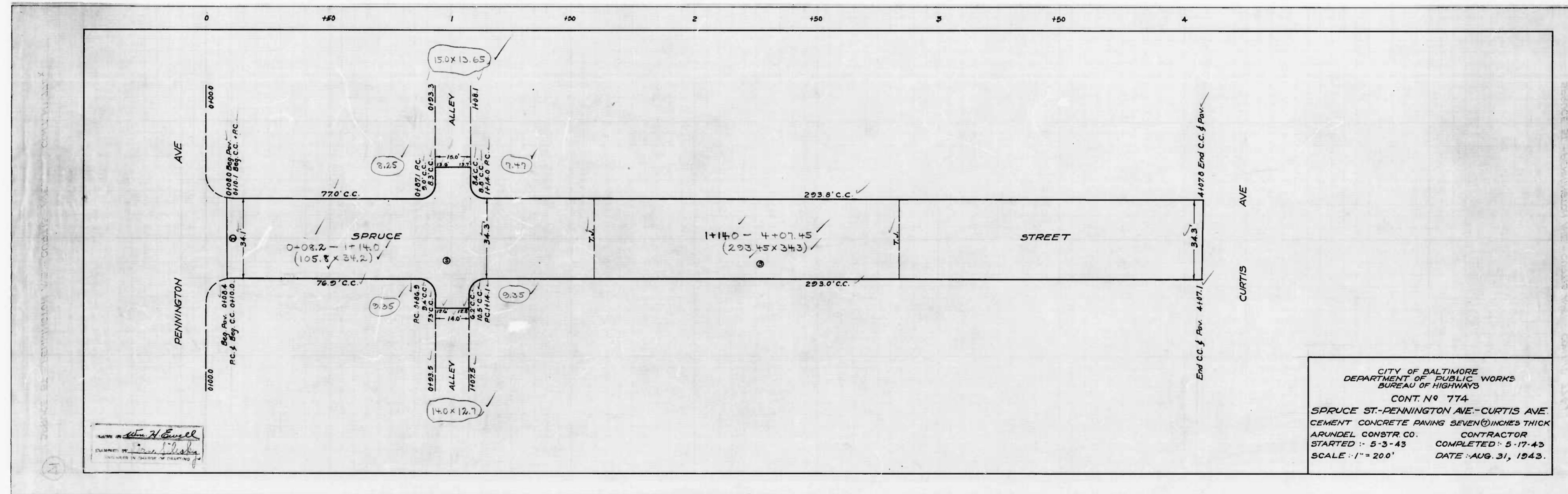
NOTE:  
The issuance of this Plan & Profile does not commit the City to the acceptance and/or improvement of any thoroughfares shown thereon.



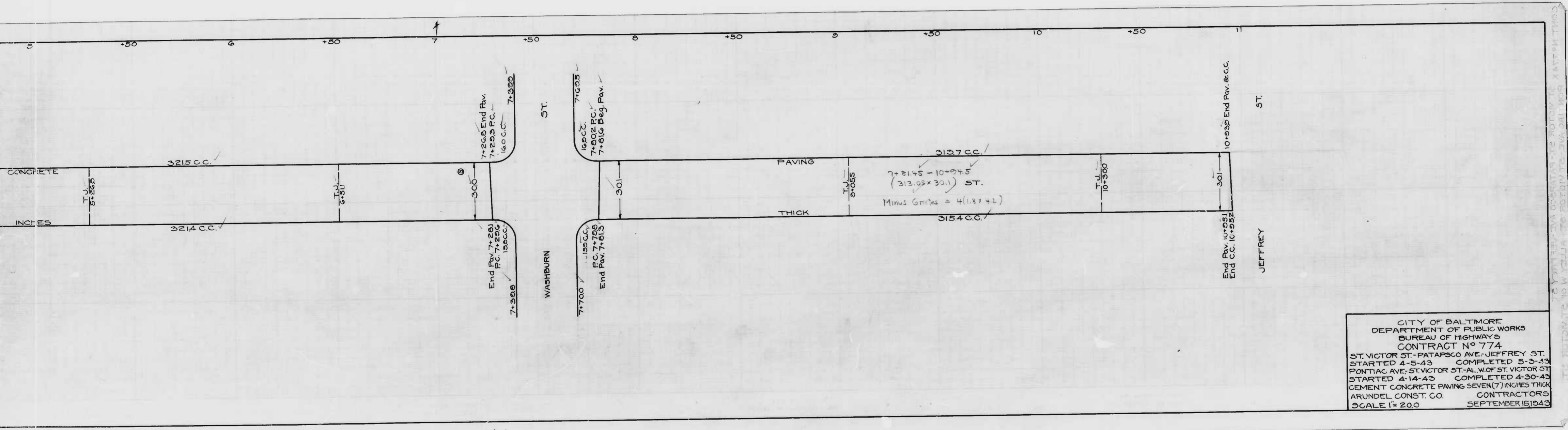
CITY OF BALTIMORE  
DEPARTMENT OF PUBLIC WORKS  
BUREAU OF HIGHWAYS  
PLAN & PROFILE  
SPRUCE ST - PENNINGTON AVE - CURTIS AVE  
CORRECT APPROVED  
*John J. Hoffman* *Geo. F. Carter*  
ASSOCIATE ENGINEER HIGHWAYS ENGINEER J.  
APPROVED APPROVED  
*Edward Hecker* *George C. Call*  
ENGR. PLANS & SURVEYS CHIEF ENGINEER

Drawn by *Wm. H. Eichel*  
*H. H. Hensberg*





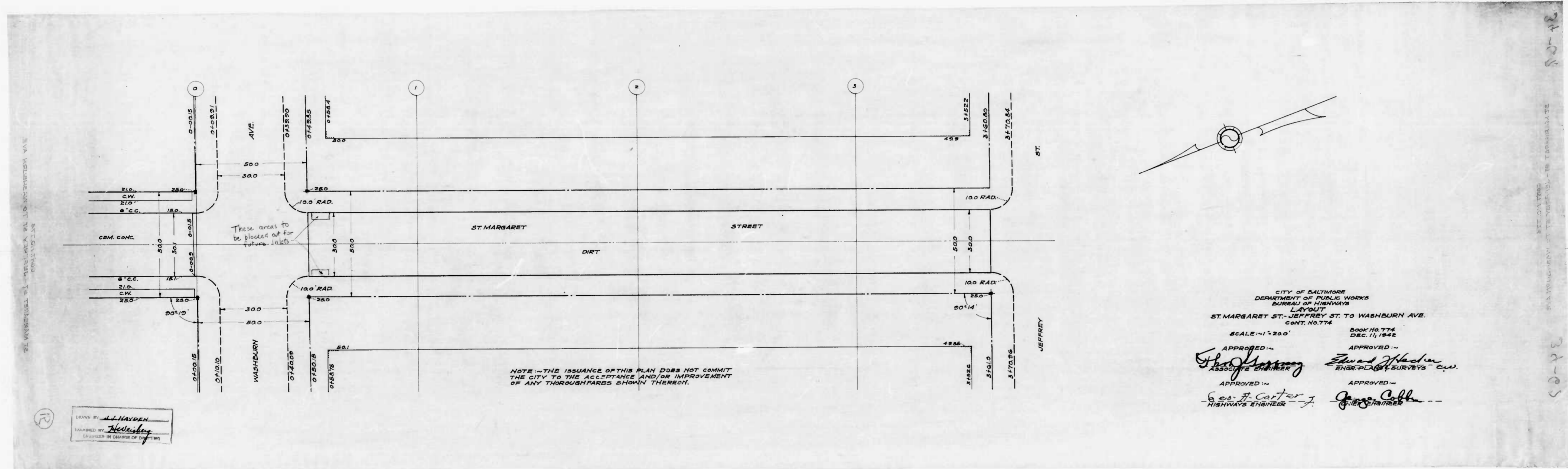




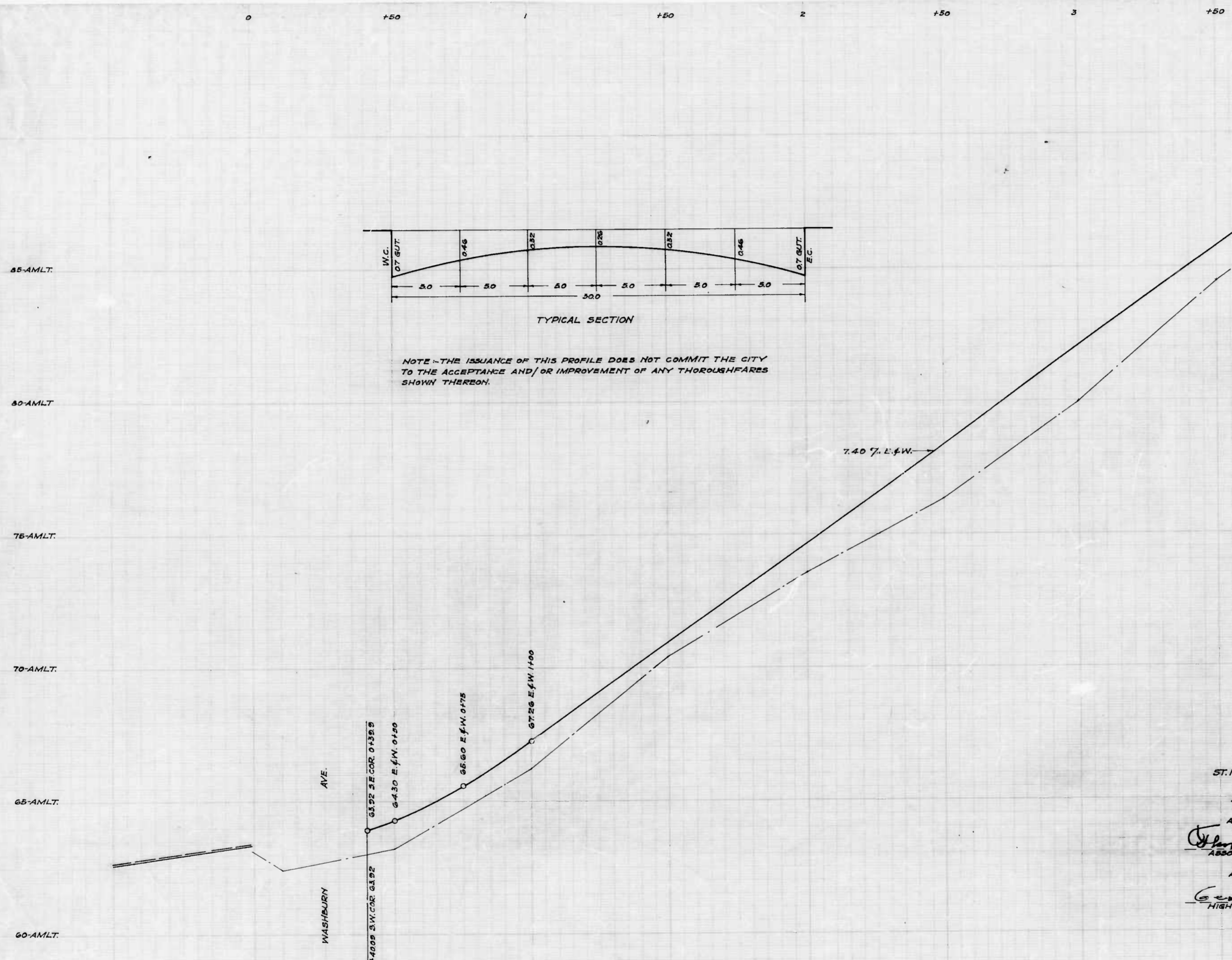
Shot 1 + Shot 2

CITY OF BALTIMORE  
 DEPARTMENT OF PUBLIC WORKS  
 BUREAU OF HIGHWAYS  
 CONTRACT NO. 774  
 ST. VICTOR ST. - PATAPSCO AVE. - JEFFREY ST.  
 STARTED 4-5-43 COMPLETED 5-2-43  
 PONTIAC AVE. - ST. VICTOR ST. - AL WOLF ST. - VICTOR ST.  
 STARTED 4-14-43 COMPLETED 4-30-43  
 CEMENT CONCRETE PAVING SEVEN (7) INCHES THICK  
 ARUNDEL CONST. CO. CONTRACTORS  
 SCALE 1" = 200' SEPTEMBER 15 1943









NOTE - THE ISSUANCE OF THIS PROFILE DOES NOT COMMIT THE CITY TO THE ACCEPTANCE AND/OR IMPROVEMENT OF ANY THOROUGHFARES SHOWN THEREON.

CITY OF BALTIMORE  
 DEPARTMENT OF PUBLIC WORKS  
 BUREAU OF HIGHWAYS  
 ESTABLISHED GRADE OF  
 ST. MARGARET ST. - JEFFREY ST. TO WASHBURN AVE.  
 CONT. NO. 774

SCALES - HOR. = 1" = 200'  
 VER. = 1" = 20'

BOOK NO. 774  
 DEC. 16, 1942

APPROVED -  
*John J. Gannon*  
 ASSOCIATE ENGINEER

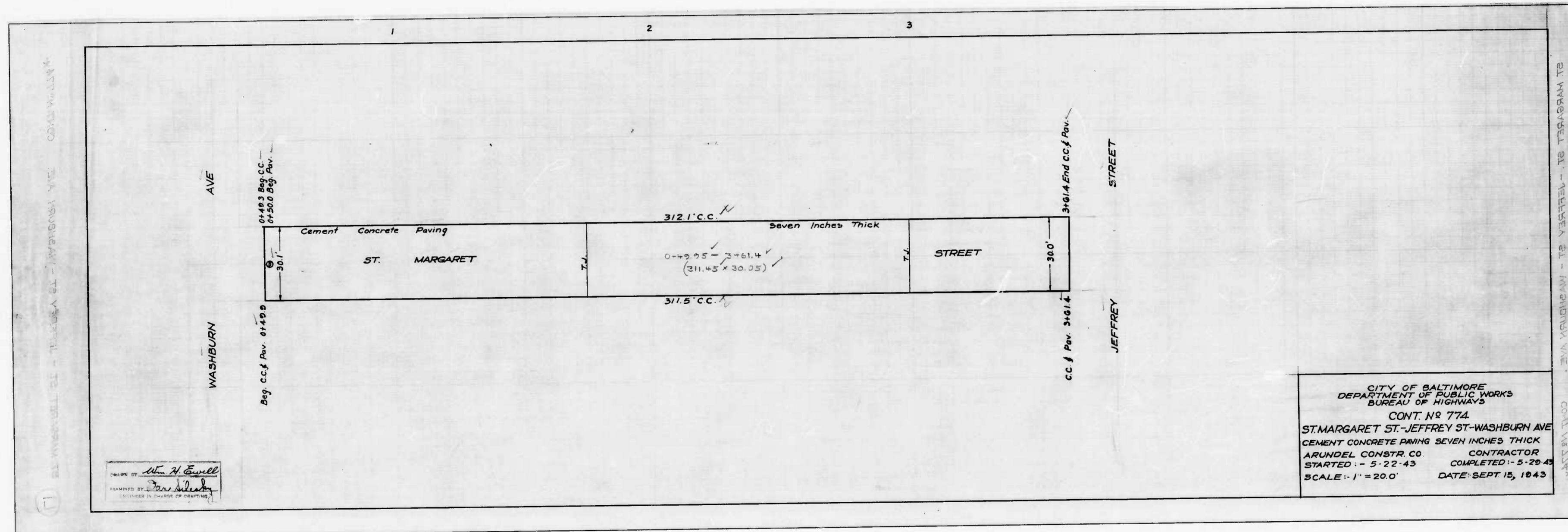
APPROVED -  
*Edward Madson*  
 ENGR. - PLANNING SURVEYS CO.

APPROVED -  
*Carl F. Carter*  
 HIGHWAYS ENGINEER

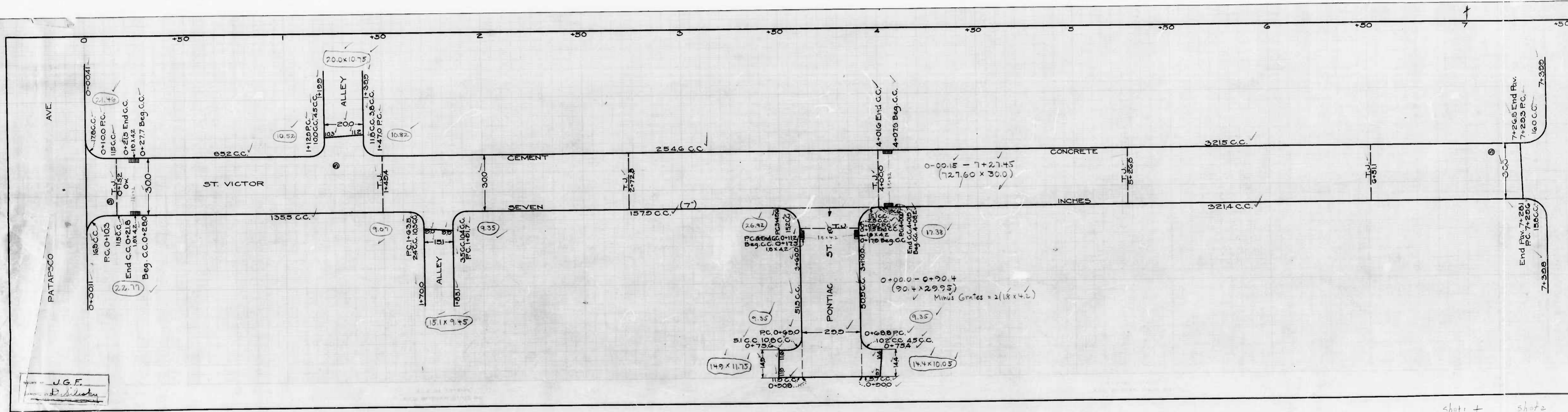
APPROVED -  
*James Collin*  
 CHIEF ENGINEER

J. J. HAYDEN  
*Hayden*  
 SUPERVISOR OF HIGHWAYS









J.G.F.  
*[Signature]*

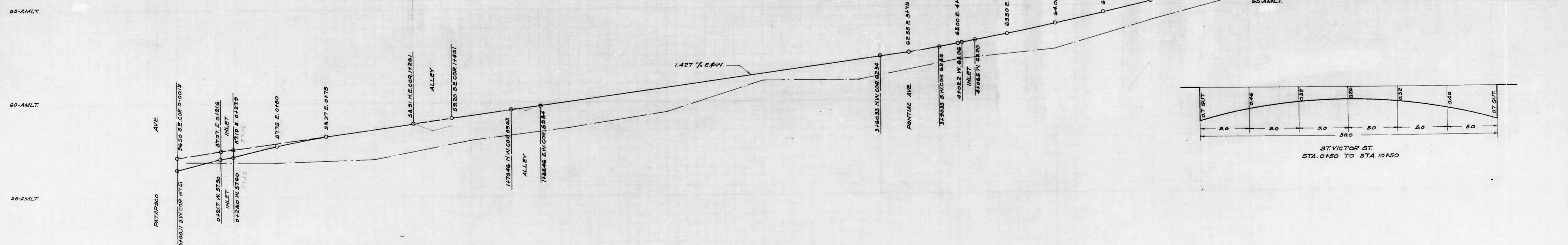
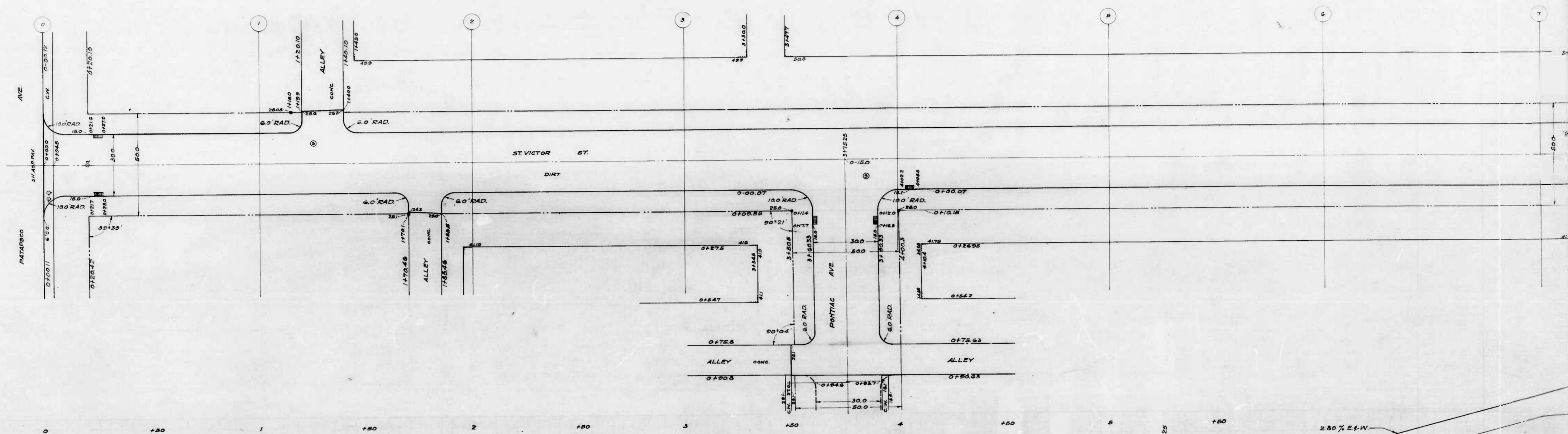
Sheet 1 + Sheet 2

WASHINGTON ST.





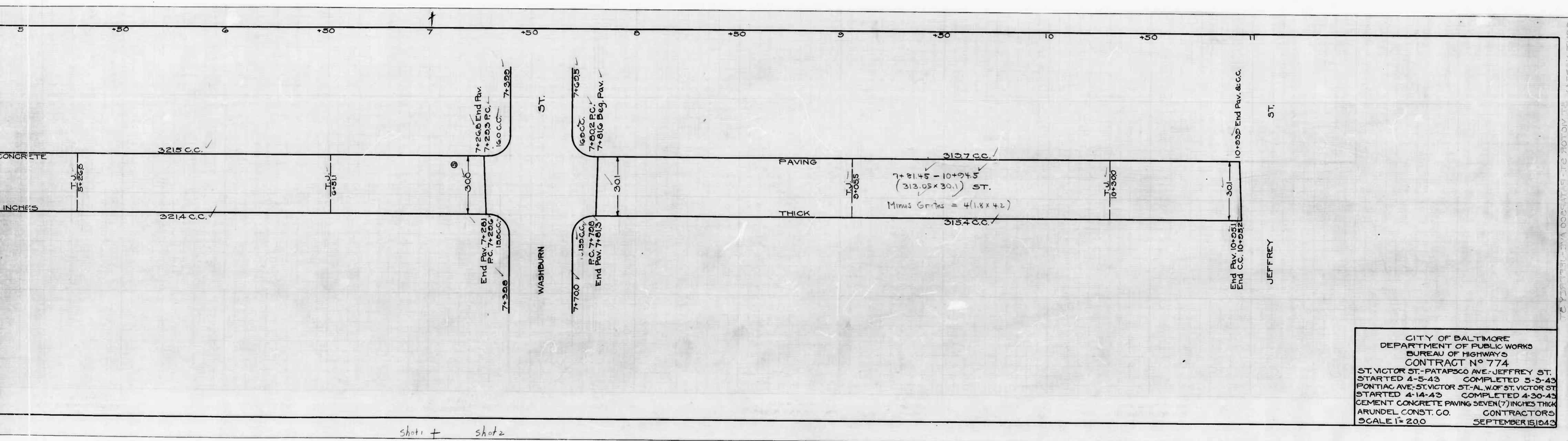




J.J. HAYDEN  
*Hayden*

shot 1 + shot 2

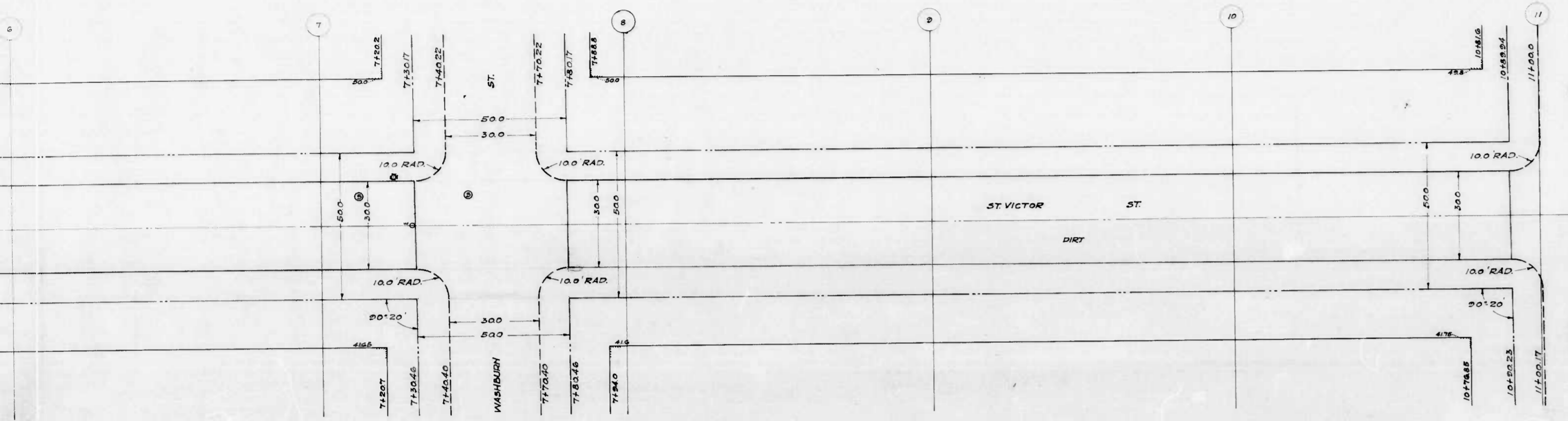




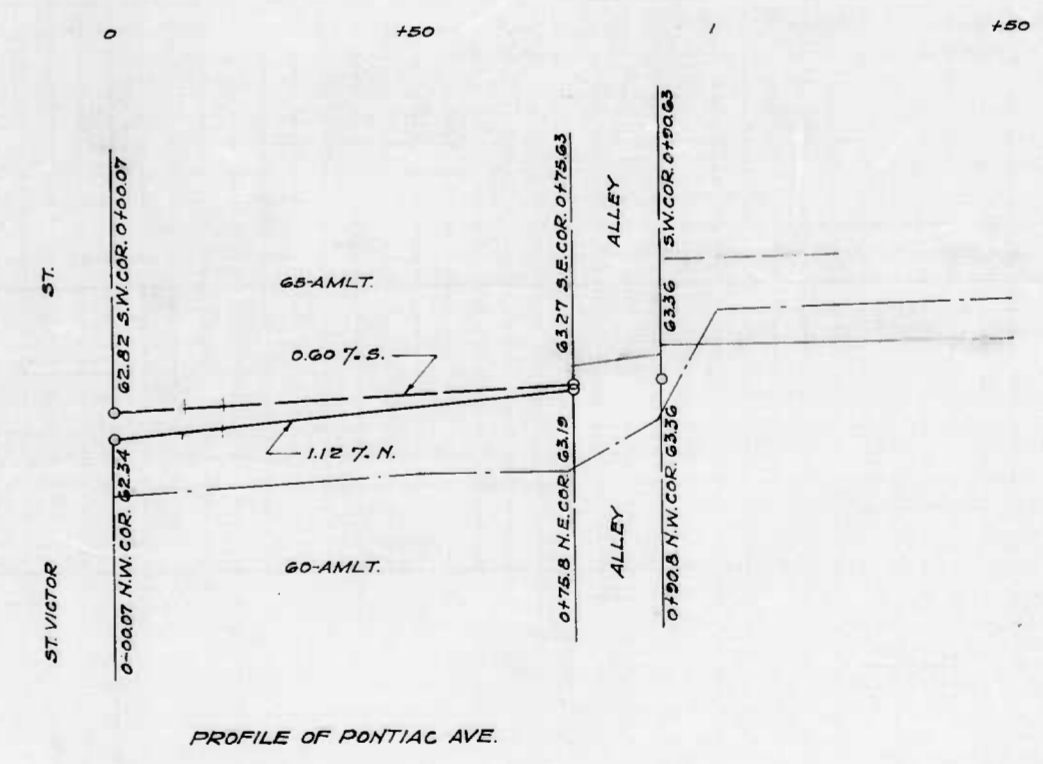
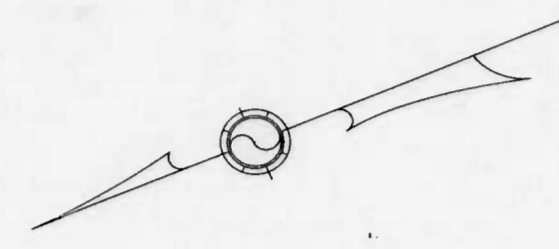
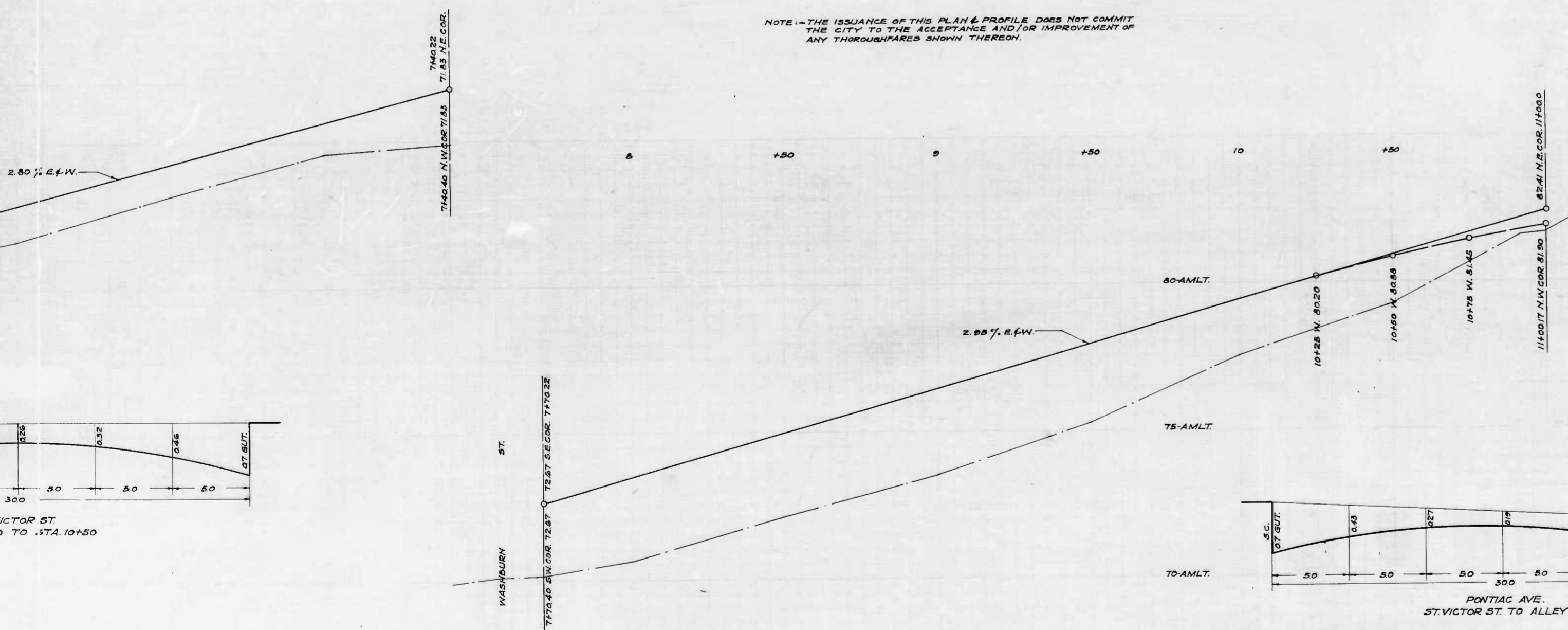
CITY OF BALTIMORE  
 DEPARTMENT OF PUBLIC WORKS  
 BUREAU OF HIGHWAYS  
 CONTRACT NO. 774  
 ST. VICTOR ST. - PATAPSCO AVE. - JEFFREY ST.  
 STARTED 4-5-43 COMPLETED 5-3-43  
 PONTIAC AVE. - ST. VICTOR ST. - AL WOLF ST. - VICTOR ST.  
 STARTED 4-14-43 COMPLETED 4-30-43  
 CEMENT CONCRETE PAVING SEVEN (7) INCHES THICK  
 ARUNDEL CONST. CO. CONTRACTORS  
 SCALE 1" = 20.0' SEPTEMBER 15, 1943

Shot 1 + Shot 2





NOTE - THE ISSUANCE OF THIS PLAN & PROFILE DOES NOT COMMIT THE CITY TO THE ACCEPTANCE AND/OR IMPROVEMENT OF ANY THOROUGHFARES SHOWN THEREON.



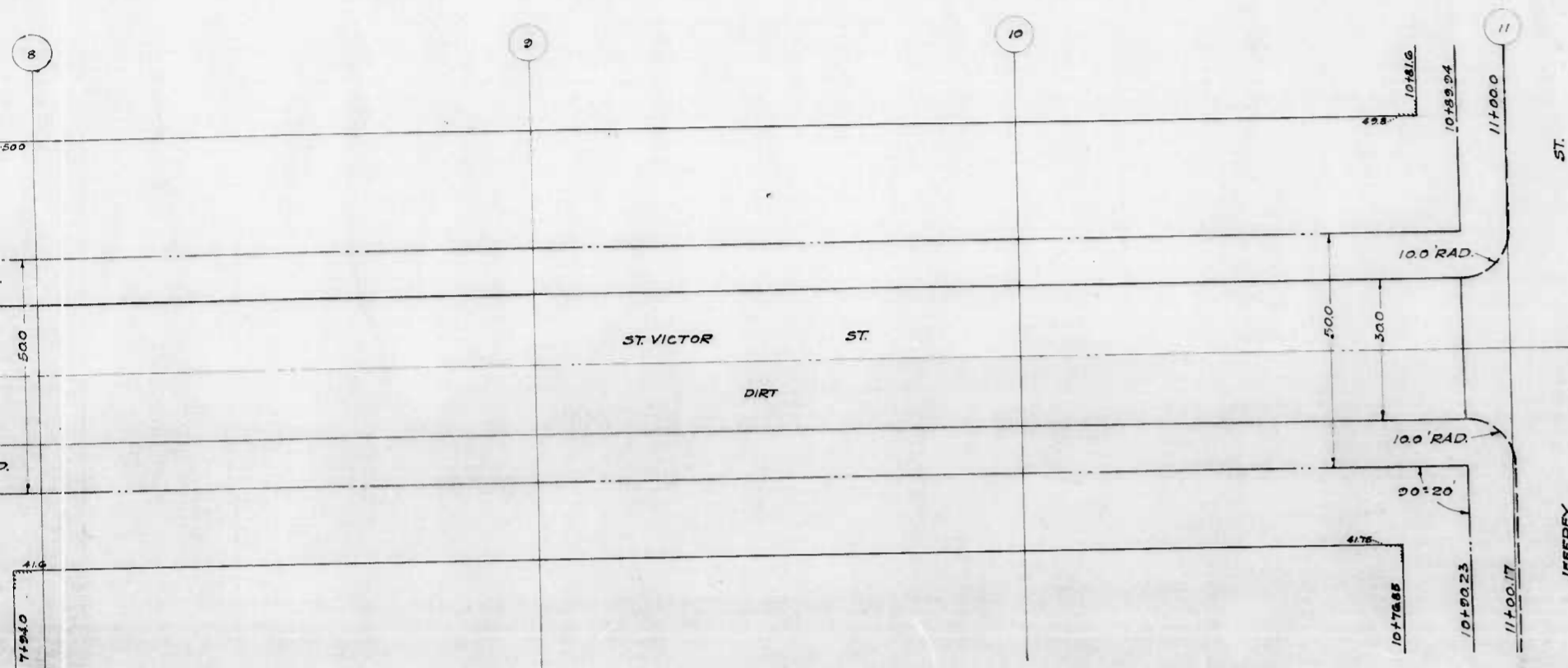
CITY OF BALTIMORE  
DEPARTMENT OF PUBLIC WORKS  
BUREAU OF HIGHWAYS  
PLAN & PROFILE  
ST VICTOR ST - PATAPSCO AVE  
PONTIAC AVE - ST VICTOR ST  
CONT. NO. 174  
P. AN - 11' 200'  
SCALES - PROFILE - HOR - 1" = 200'  
VER - 1" = 20'

APPROVED: [Signature]  
ASSOCIATE ENGINEER  
APPROVED: [Signature]  
HIGHWAYS ENGINEER

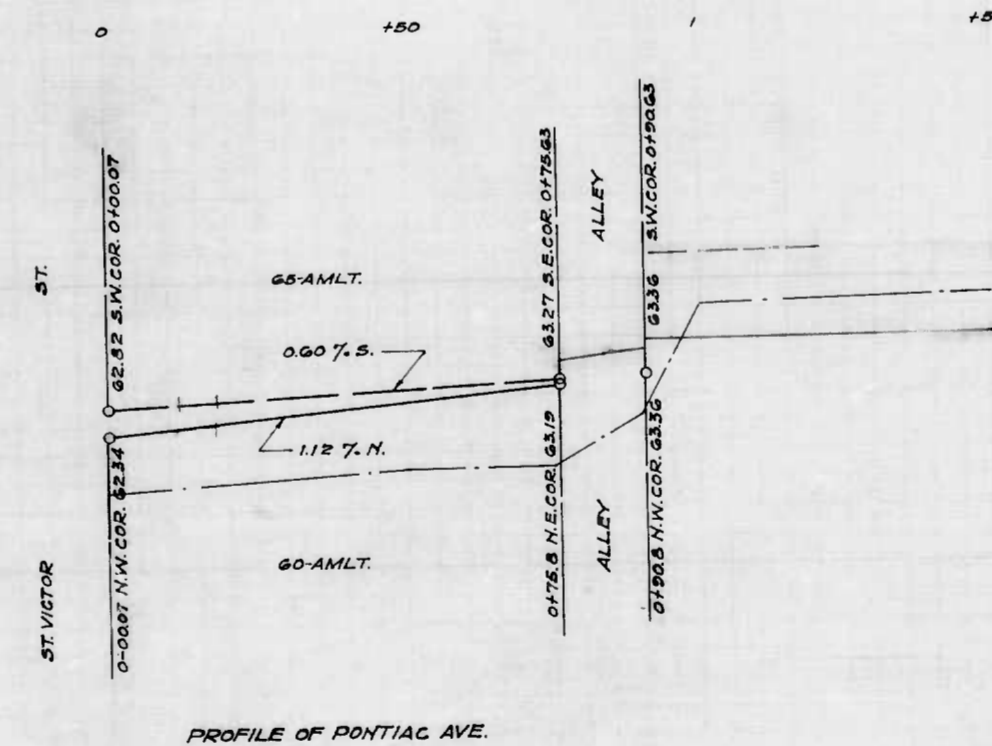
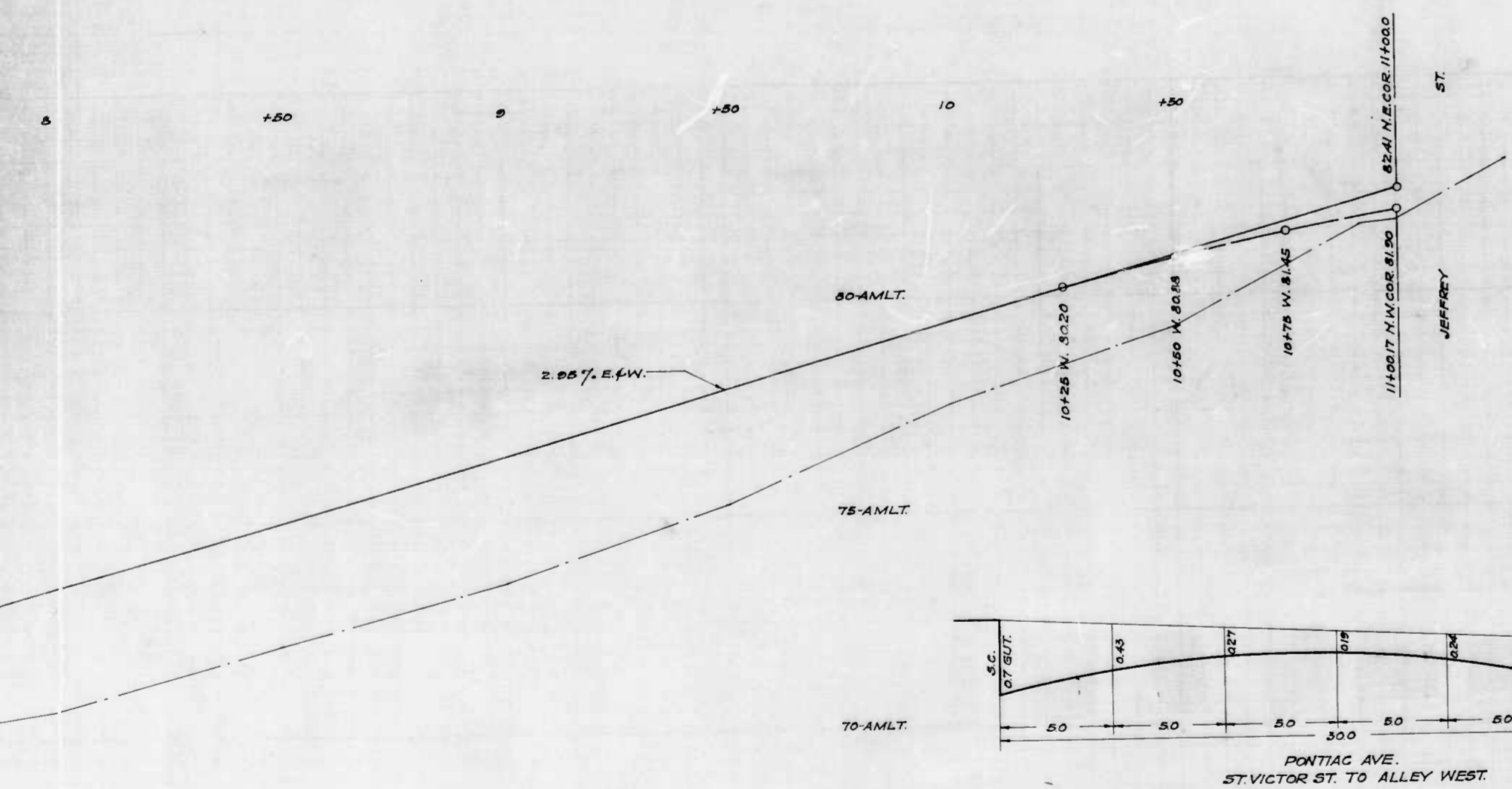
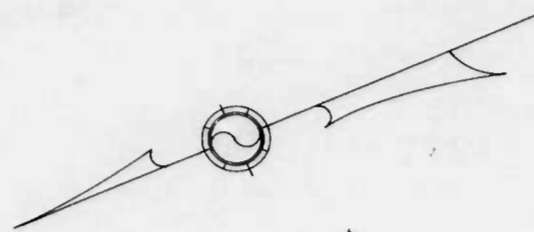
Sheet 1 of 2

Sheet 2 of 2





NOTE - THE ISSUANCE OF THIS PLAN & PROFILE DOES NOT COMMIT THE CITY TO THE ACCEPTANCE AND/OR IMPROVEMENT OF ANY THOROUGHFARES SHOWN THEREON.



CITY OF BALTIMORE  
 DEPARTMENT OF PUBLIC WORKS  
 BUREAU OF HIGHWAYS  
 PLAN & PROFILE  
 ST. VICTOR ST. - PATAPSCO AVE. TO JEFFREY ST.  
 PONTIAC AVE. - ST. VICTOR ST. - AL. W. OF ST. VICTOR ST.  
 CONT. NO. 774  
 PLAN - 1" = 200'  
 SCALES - PROFILE - HOR - 1" = 200'  
 VER - 1" = 20'  
 BOOK NO. 774  
 DEC. 8, 1942  
 APPROVED -  
 APPROVED -  
 APPROVED -  
 APPROVED -

*Edwin J. ...*  
 ASSOCIATE ENGINEER  
*Edward ...*  
 ENGR. - PLANNING SURVEYS  
*Geo. H. ...*  
 HIGHWAYS ENGINEER  
*James ...*  
 CHIEF ENGINEER

+ Shots