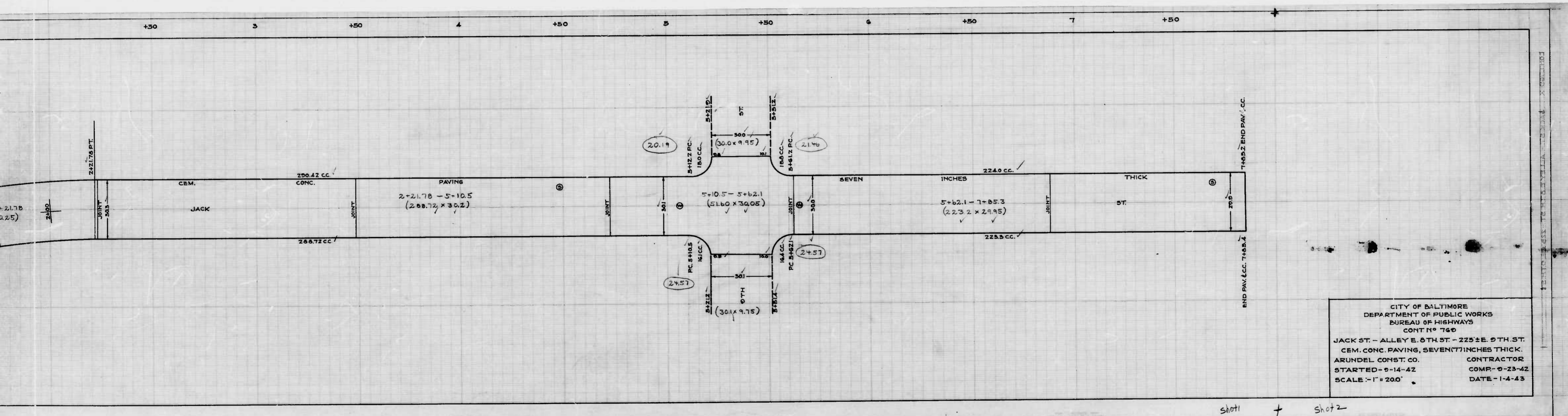


Marley  
*W. Marley*

CITY OF  
 DEPARTMENT  
 BUREAU  
 CONT  
 JACK ST - ALLEY E.  
 CEM. CONC. PAVING,  
 ARUNDEL CONST. CO.  
 STARTED - 6-14-42  
 SCALE: 1" = 200'

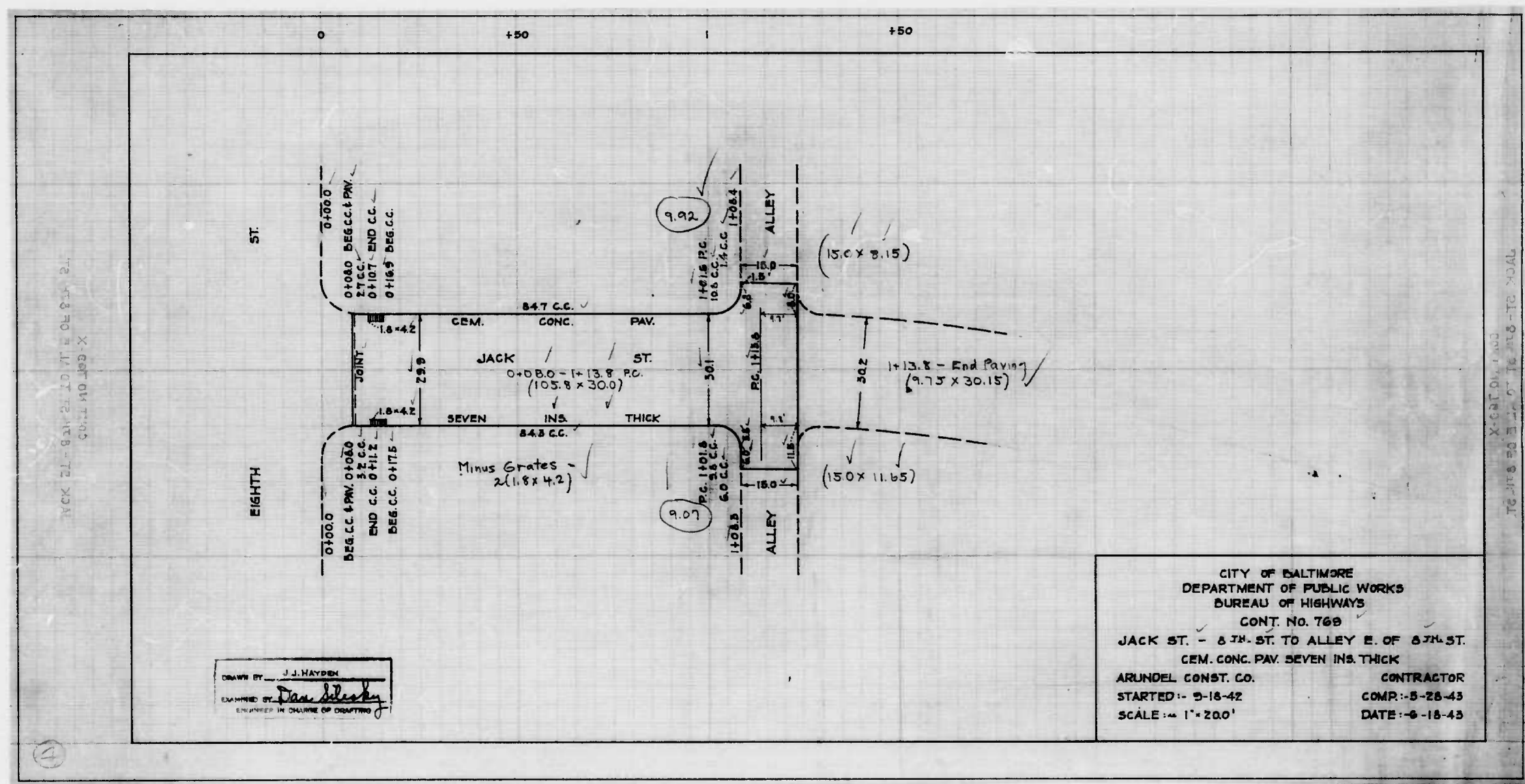
Shot 1 + Shot 2

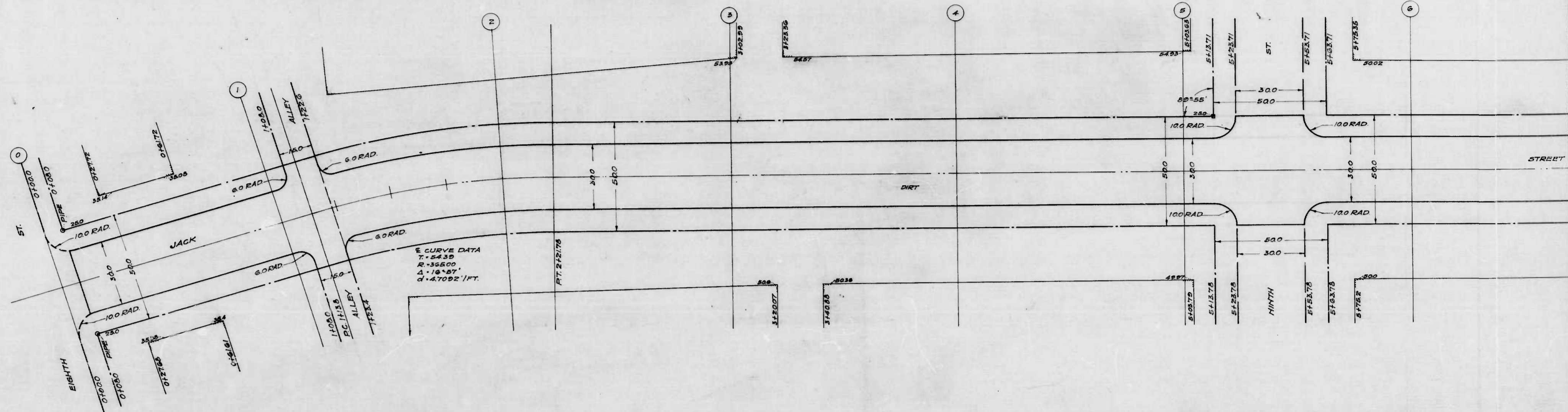


CITY OF BALTIMORE  
 DEPARTMENT OF PUBLIC WORKS  
 BUREAU OF HIGHWAYS  
 CONT NO 760

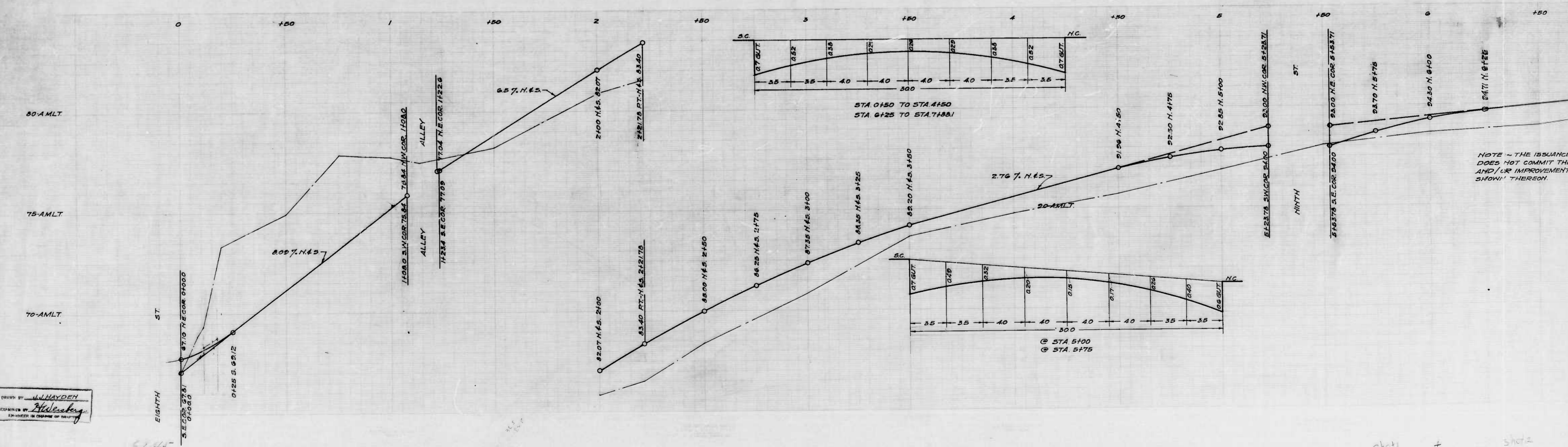
JACK ST - ALLEY E. 8TH ST - 225±E. 9TH ST.  
 CEM. CONC. PAVING, SEVENTY INCHES THICK.  
 ARUNDEL CONST. CO. CONTRACTOR  
 STARTED - 9-14-42 COMP - 9-23-42  
 SCALE - 1" = 200' DATE - 1-4-43

Shot 1 + Shot 2





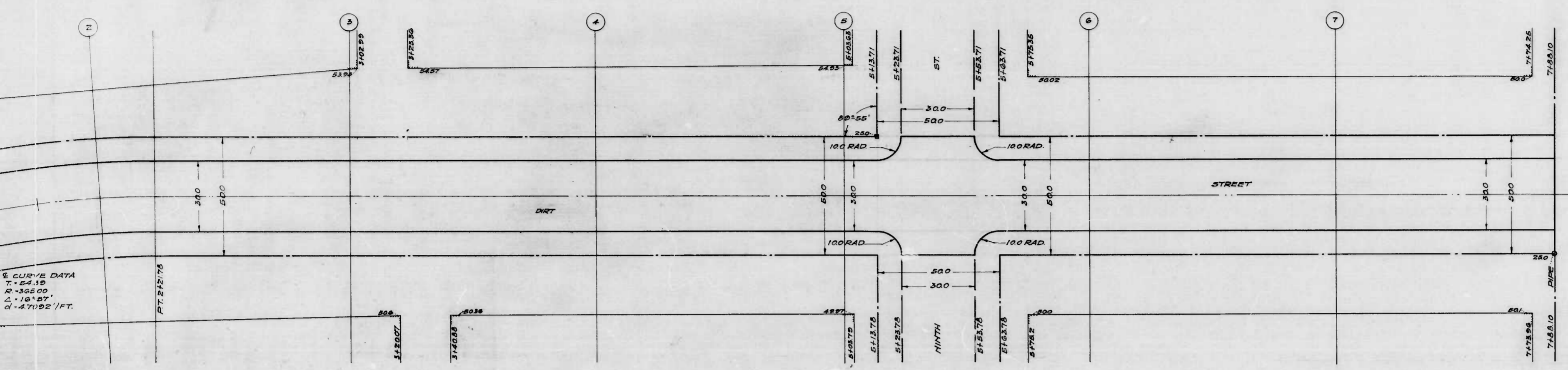
E CURVE DATA  
 T = 54.20  
 R = 355.00  
 Δ = 16° 27'  
 Δ = 470.92' / FT.



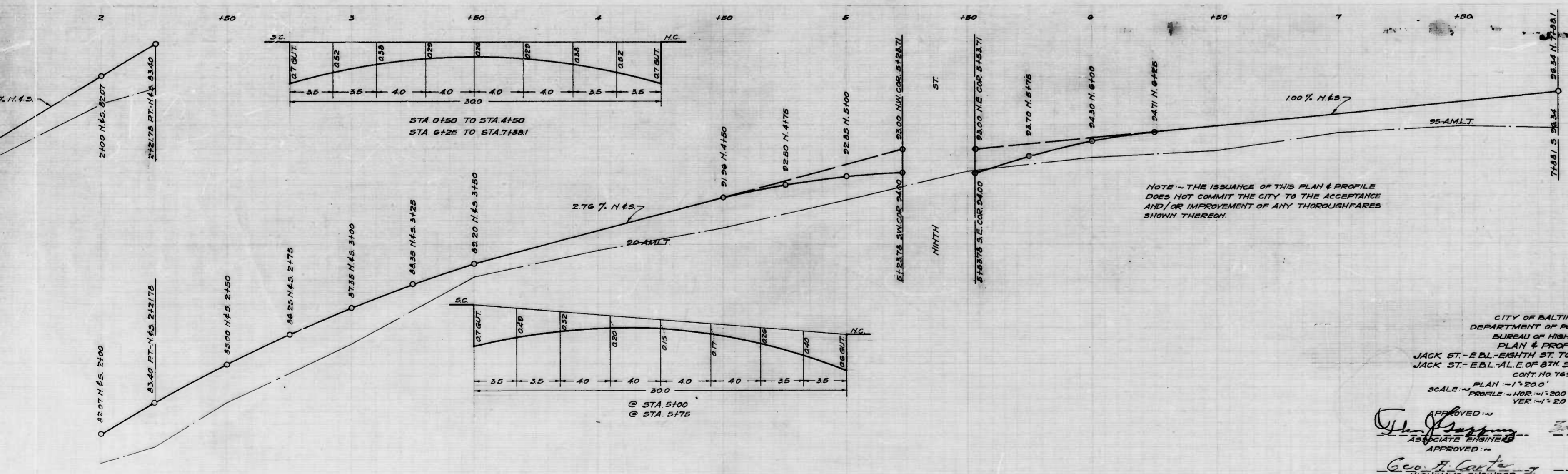
NOTE - THE ISSUANCE DOES NOT COMMIT THE AND/OR IMPROVEMENT SHOWN THEREON.

DESIGNED BY: *J. HAYDEN*  
 EXPANDED BY: *Hickory*  
 IN CHARGE OF PROJECT

Sheet 1 of 2



CURVE DATA  
 T = 54.10  
 R = 365.00  
 Δ = 16° 57'  
 C = 47.092' / FT.



NOTE - THE ISSUANCE OF THIS PLAN & PROFILE DOES NOT COMMIT THE CITY TO THE ACCEPTANCE AND/OR IMPROVEMENT OF ANY THOROUGHFARES SHOWN THEREON.

CITY OF BALTIMORE  
 DEPARTMENT OF PUBLIC WORKS  
 BUREAU OF HIGHWAYS  
 PLAN & PROFILE  
 JACK ST - EBL - EIGHTH ST. TO EBL - ALLE. OF 8TH ST.  
 JACK ST - EBL - ALLE. OF 8TH ST. TO 225' E. OF 5TH ST.  
 CONT. NO. 769  
 PLAN - 1" = 20'  
 PROFILE - 1" = 20'  
 VER. 1" = 20'  
 JUNE 24, 1942  
 BOOK NO. X-171

APPROVED: *Wm. H. ...*  
 ASSOCIATE ENGINEER

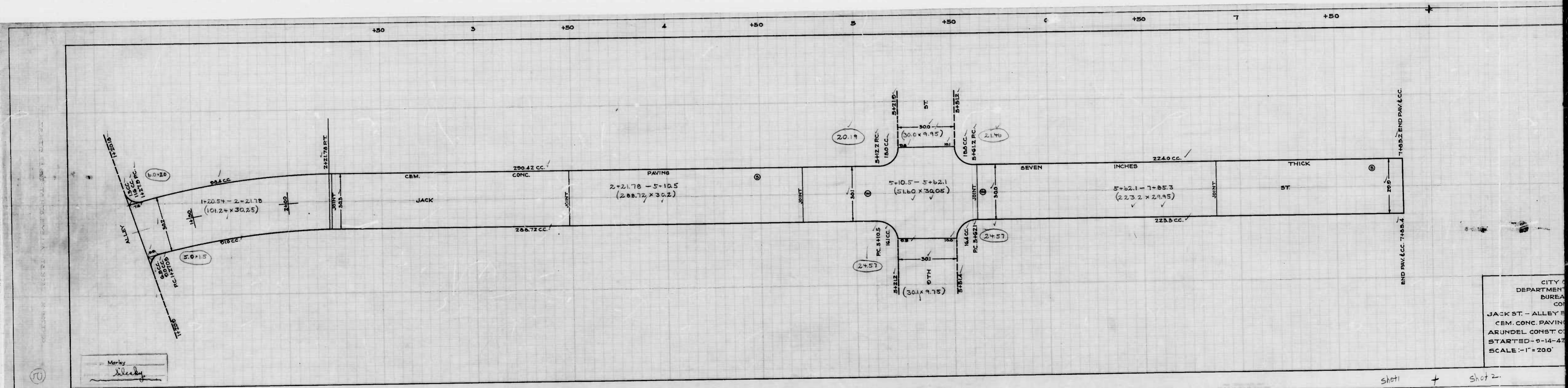
APPROVED: *Edward ...*  
 ENGR. - PLANS & SURVEYS

APPROVED: *Geo. J. ...*  
 HIGHWAYS ENGINEER

APPROVED: *George ...*  
 CHIEF ENGINEER

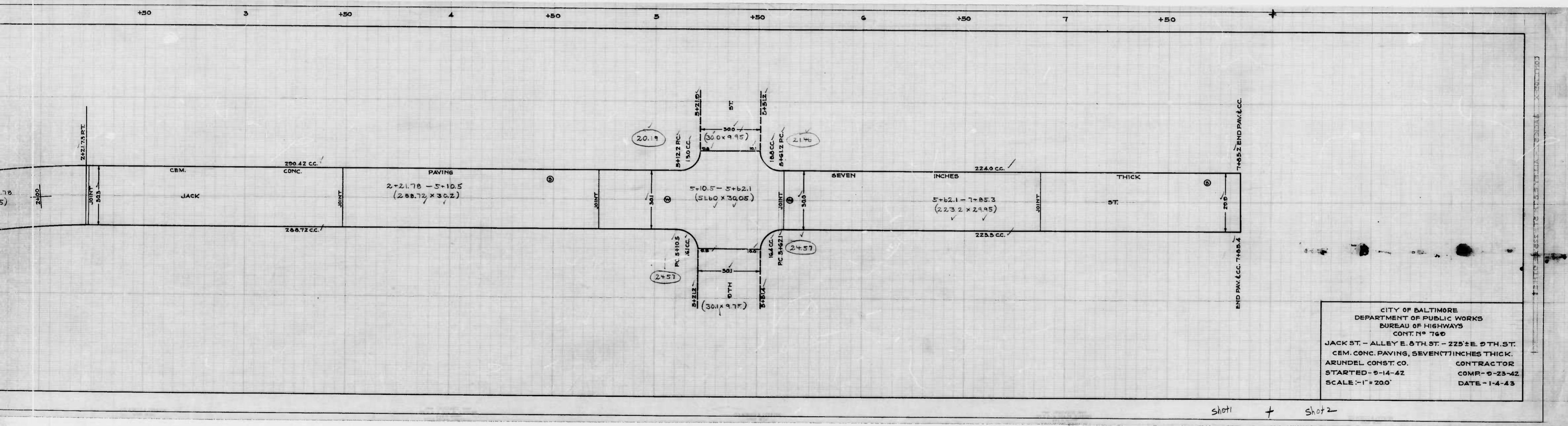
shot 1 + shot 2



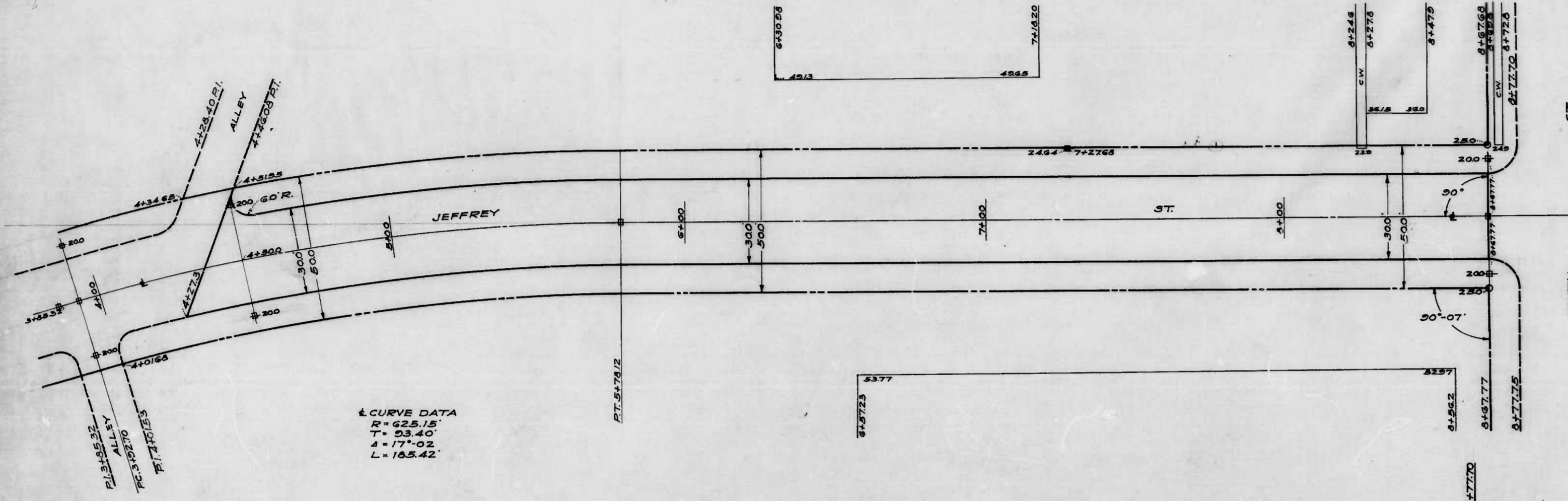


CITY OF  
 DEPARTMENT OF  
 BUREAU OF  
 JACK ST. - ALLEY  
 CEM. CONC. PAVING  
 ARUNDEL CONST. CO.  
 STARTED - 9-14-47  
 SCALE: 1" = 20.0'

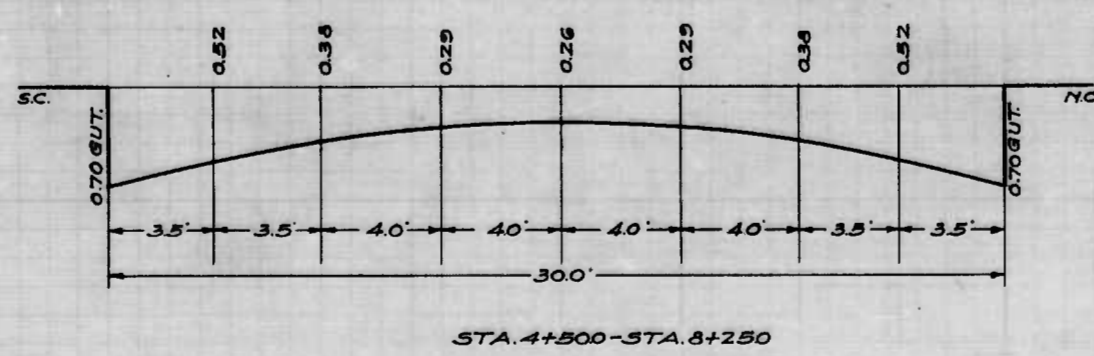
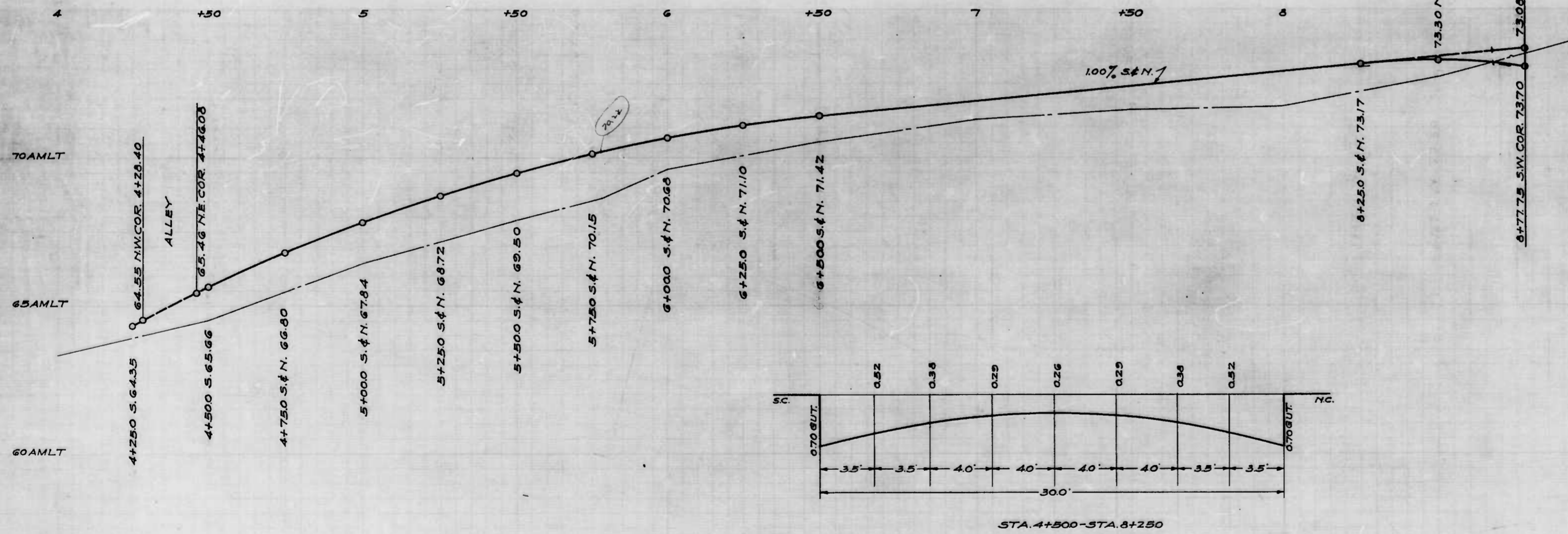
Sheet 1 + Sheet 2



SHOT 1 + SHOT 2



4 CURVE DATA  
 R = 625.15'  
 T = 53.40'  
 Δ = 17°-02'  
 L = 105.42'

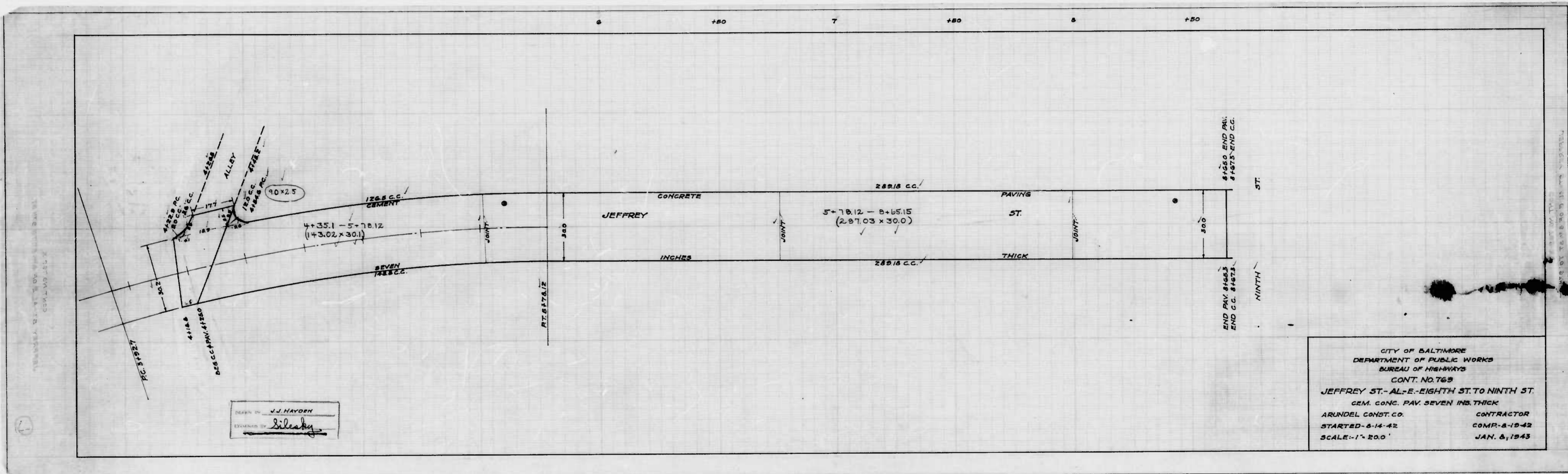


NOTE:-  
 THE ISSUANCE OF THIS PLAN & PROFILE  
 DOES NOT COMMIT THE CITY TO THE  
 ACCEPTANCE AND/OR IMPROVEMENT  
 OF ANY THOROUGHFARE SHOWN THEREON.

CITY OF BALTIMORE  
 DEPARTMENT OF PUBLIC WORKS  
 BUREAU OF HIGHWAYS  
 PLAN & PROFILE  
 JEFFREY ST. - AL. E. EIGHTH ST. - NINTH ST.  
 HOR. - 1" = 200'  
 PROF. - VER. - 1" = 20'  
 SCALES - PLAN - 1" = 200'  
 BOOK NO. X-133  
 CONT. NO. 769  
 DATE - JUNE 30, 1942

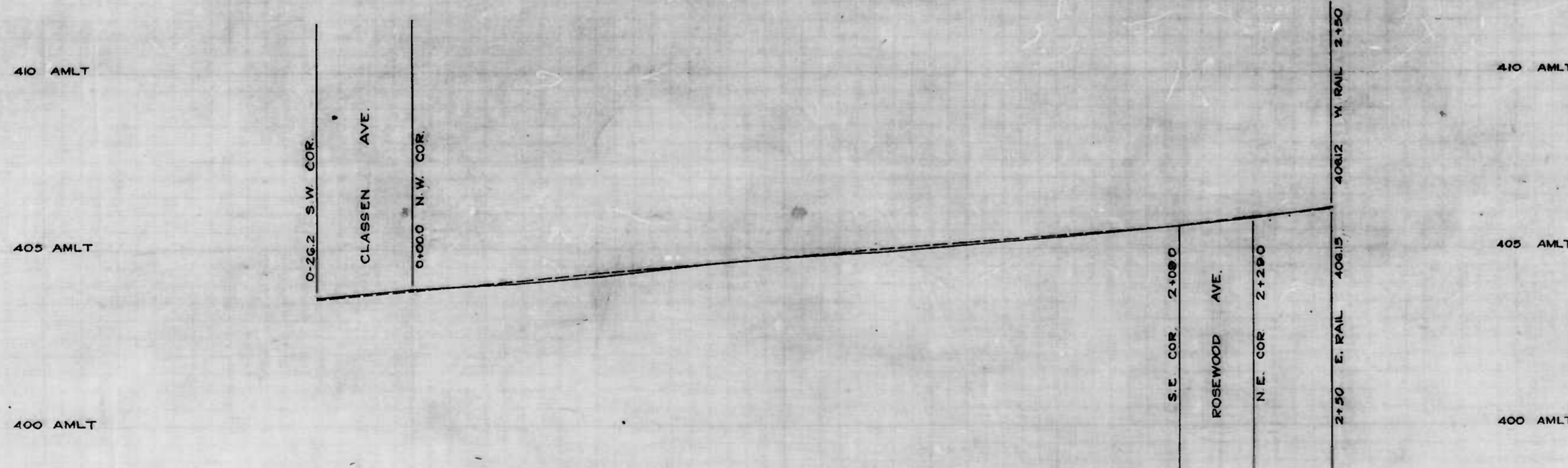
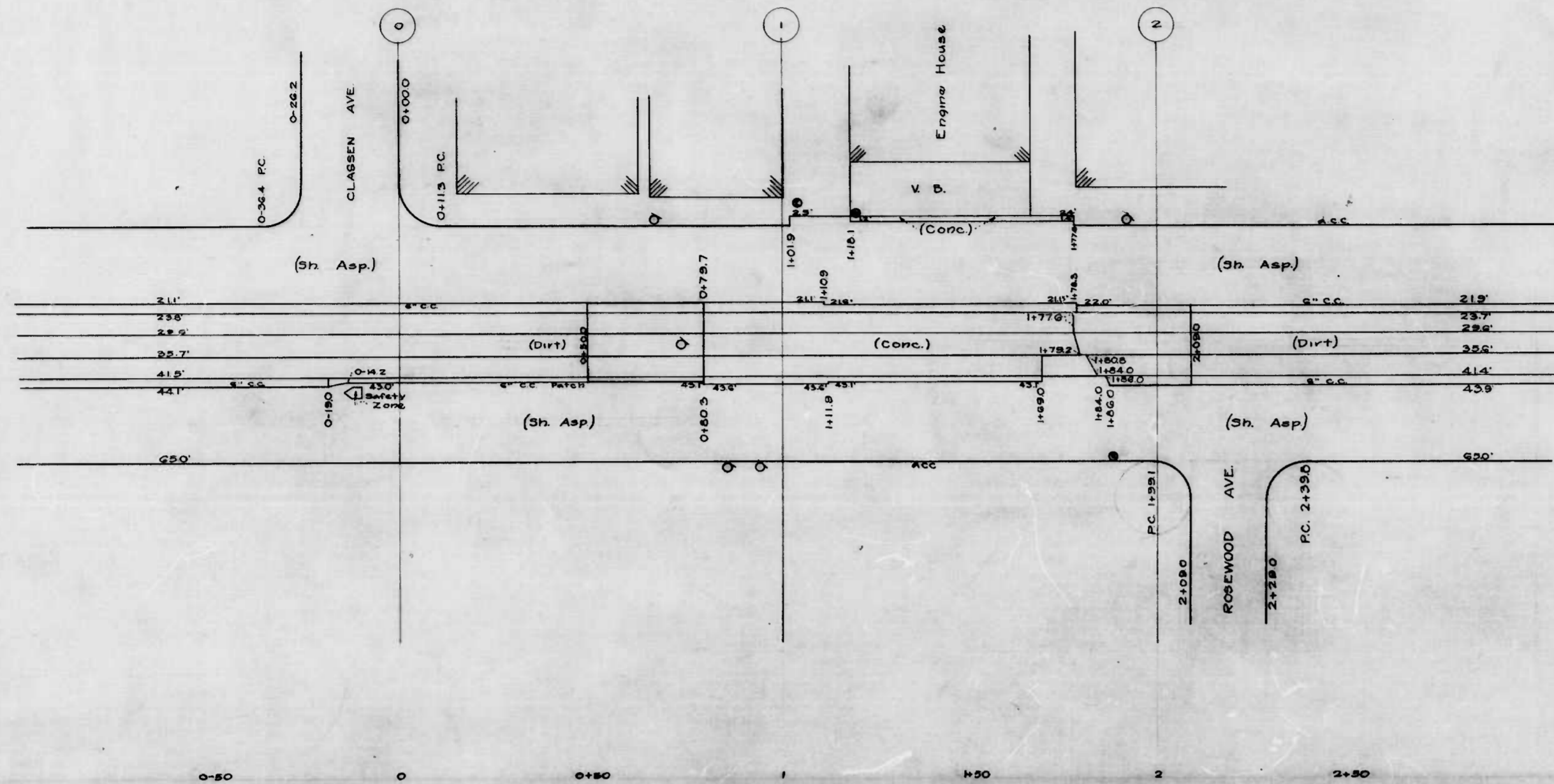
CORRECTED BY: *Edward H. ...*  
 ASSOCIATE ENGINEER  
 APPROVED BY: *George H. Carter*  
 HIGHWAYS ENGINEER  
 APPROVED BY: *George Cobb*  
 CHIEF ENGINEER

DRAWN BY: Marley  
 CHECKED BY: *Hersey*  
 ENGINEER IN CHARGE OF DRAWING



DRAWN BY J.J. HAYDEN  
 ESTIMATED BY *Silsky*

CITY OF BALTIMORE  
 DEPARTMENT OF PUBLIC WORKS  
 BUREAU OF HIGHWAYS  
 CONT. NO. 768  
 JEFFREY ST. - AL-E-EIGHTH ST. TO NINTH ST.  
 CEM. CONC. PAV. SEVEN INS. THICK  
 ARUNDEL CONST. CO. CONTRACTOR  
 STARTED 8-14-42 COMP. 8-19-42  
 SCALE 1" = 20.0' JAN. 8, 1943

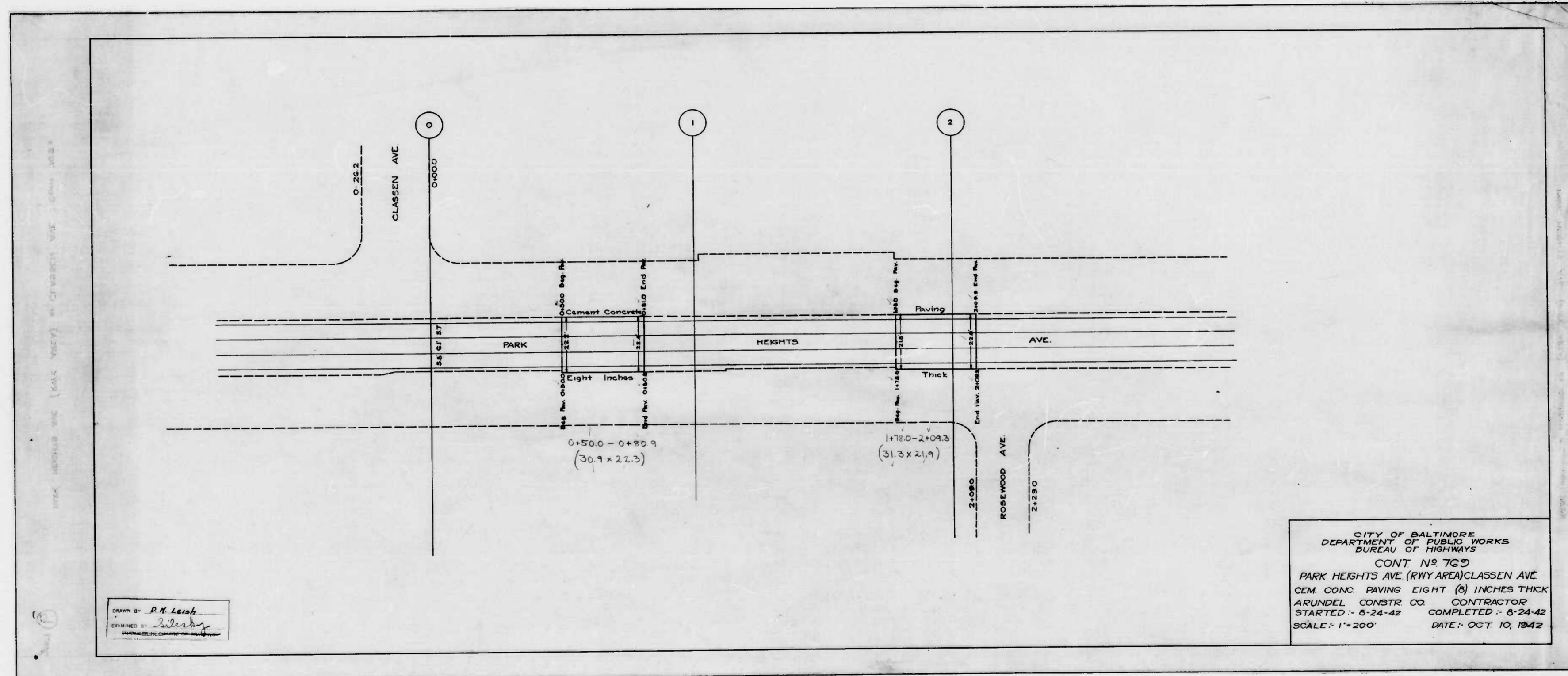


CITY OF BALTIMORE  
 DEPARTMENT OF PUBLIC WORKS  
 BUREAU OF HIGHWAYS  
 PLAN & PROFILE  
 PARK HTS. AVE (RWY. AREA ONLY) N. CLASSEN AVE.  
 PLAN 1"=200' BOOK NO. X-169  
 SCALE: HOR - 1"=200' DATE: JULY 15, 1942  
 PROF. VER. - 1"=20' CONT. NO. - 769

CORRECT  
*Edw. J. Schell*  
 ASSOCIATE ENGINEER  
 APPROVED  
 ENGR. PLANS & SURVEYS

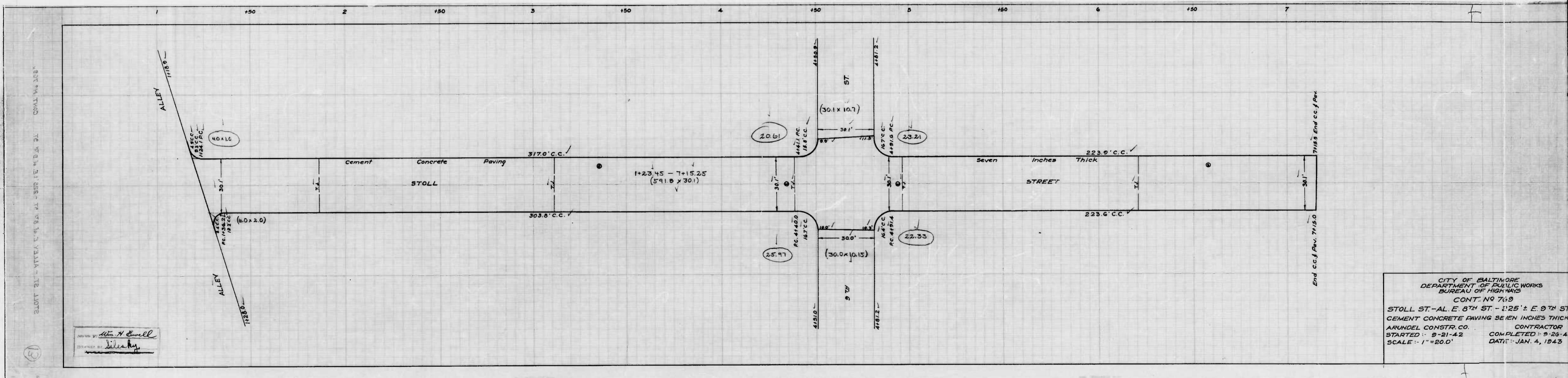
APPROVED  
*Geo. H. Carter*  
 HIGHWAYS ENGINEER  
 APPROVED  
*George Collie*  
 CHIEF ENGINEER

DESIGNED BY *D. N. Lisk*  
 ENGINEER IN CHARGE OF DRAWING



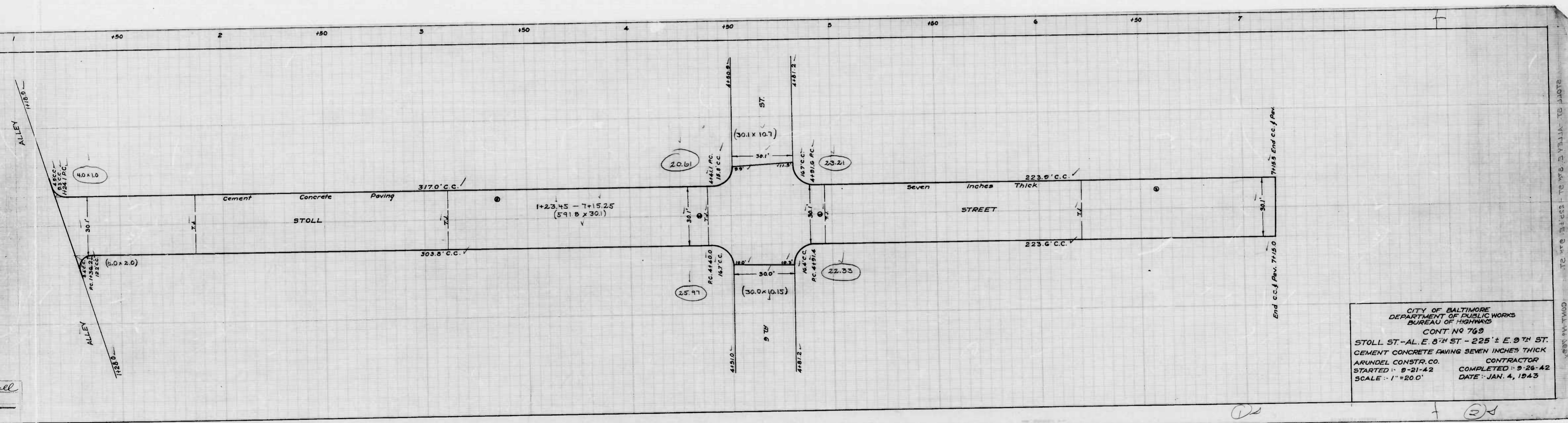
DRAWN BY *D. H. Leah*  
 EXAMINED BY *Leah*

CITY OF BALTIMORE  
 DEPARTMENT OF PUBLIC WORKS  
 BUREAU OF HIGHWAYS  
 CONT. NO. 769  
 PARK HEIGHTS AVE (RWY AREA) CLASSEN AVE  
 CEM. CONC. PAVING EIGHT (8) INCHES THICK  
 ARUNDEL CONSTR. CO. CONTRACTOR  
 STARTED - 5-24-42 COMPLETED - 5-24-42  
 SCALE - 1" = 200' DATE - OCT. 10, 1942



Checked by Wm. H. Ewell  
 Drawn by W. H. Ewell

CITY OF BALTIMORE  
 DEPARTMENT OF PUBLIC WORKS  
 BUREAU OF HIGHWAYS  
 CONT. NO. 769  
 STOLL ST. - AL. E. 8<sup>TH</sup> ST. - 225' ± E. 9<sup>TH</sup> ST.  
 CEMENT CONCRETE PAVING SEVEN INCHES THICK  
 ARUNDEL CONSTR. CO. CONTRACTOR  
 STARTED : 9-21-42 COMPLETED : 9-23-42  
 SCALE : 1" = 20.0' DATE : JAN. 4, 1943



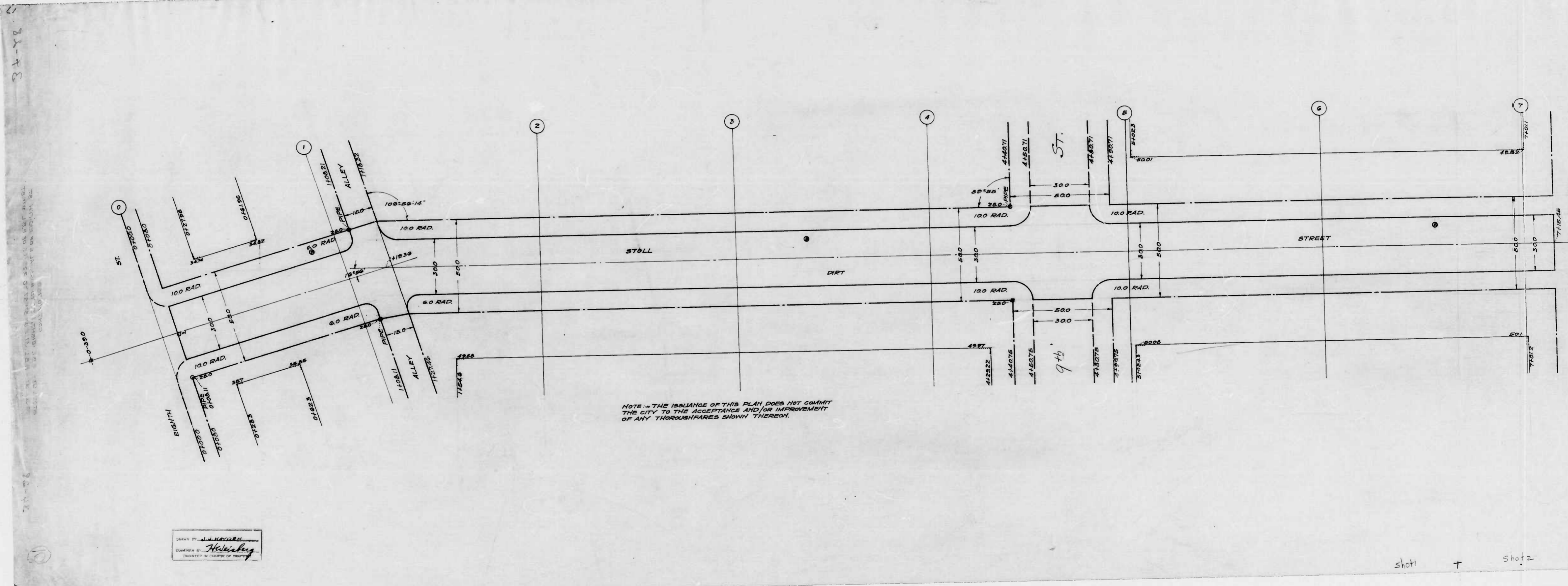




769

RATIO - 24

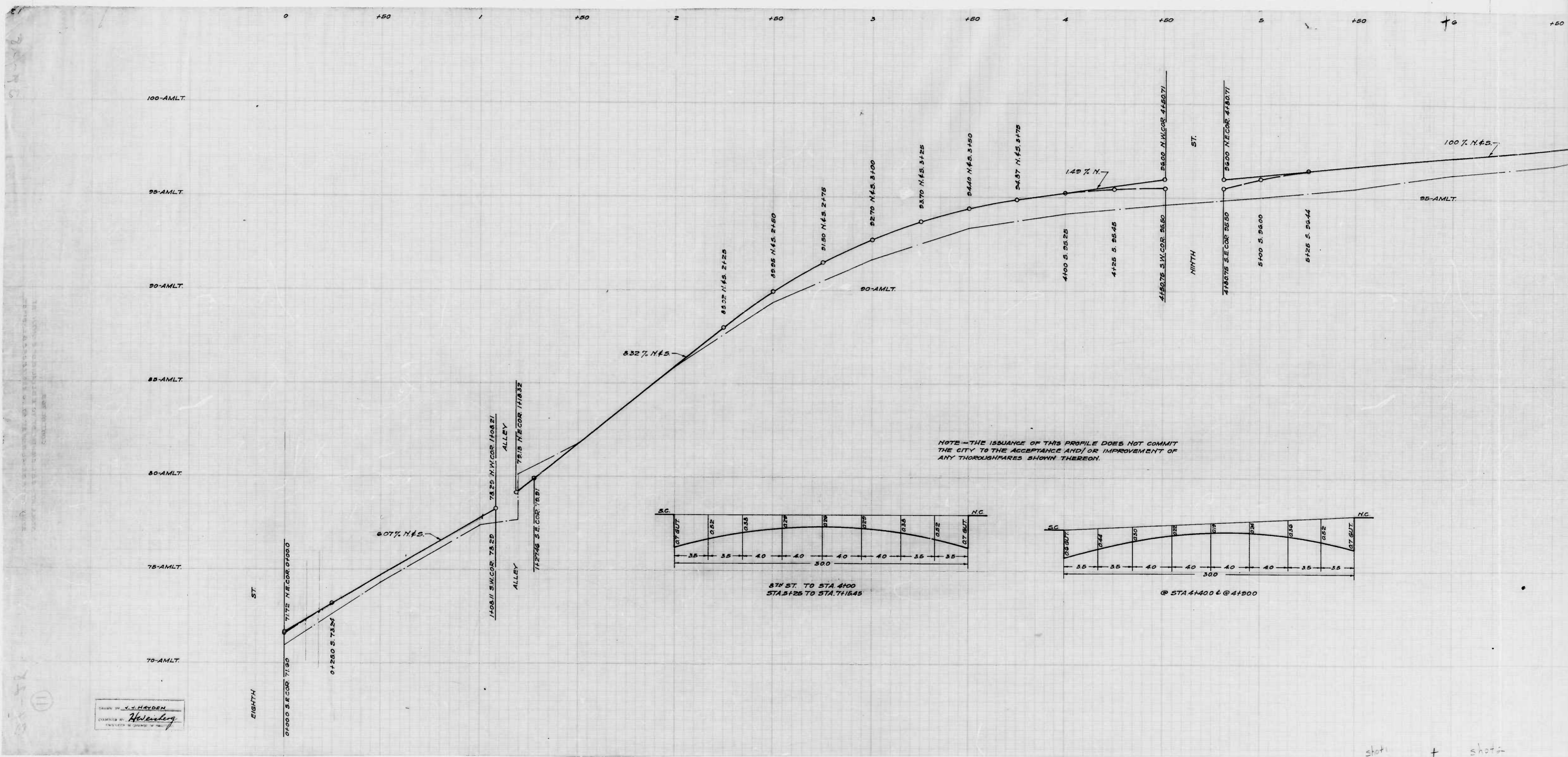
1.0



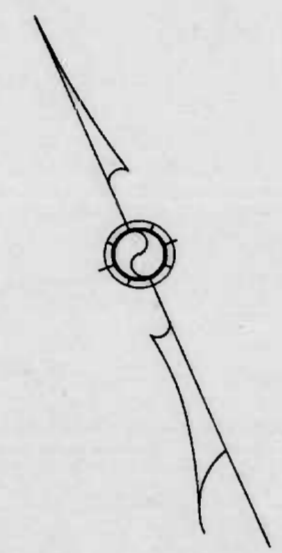
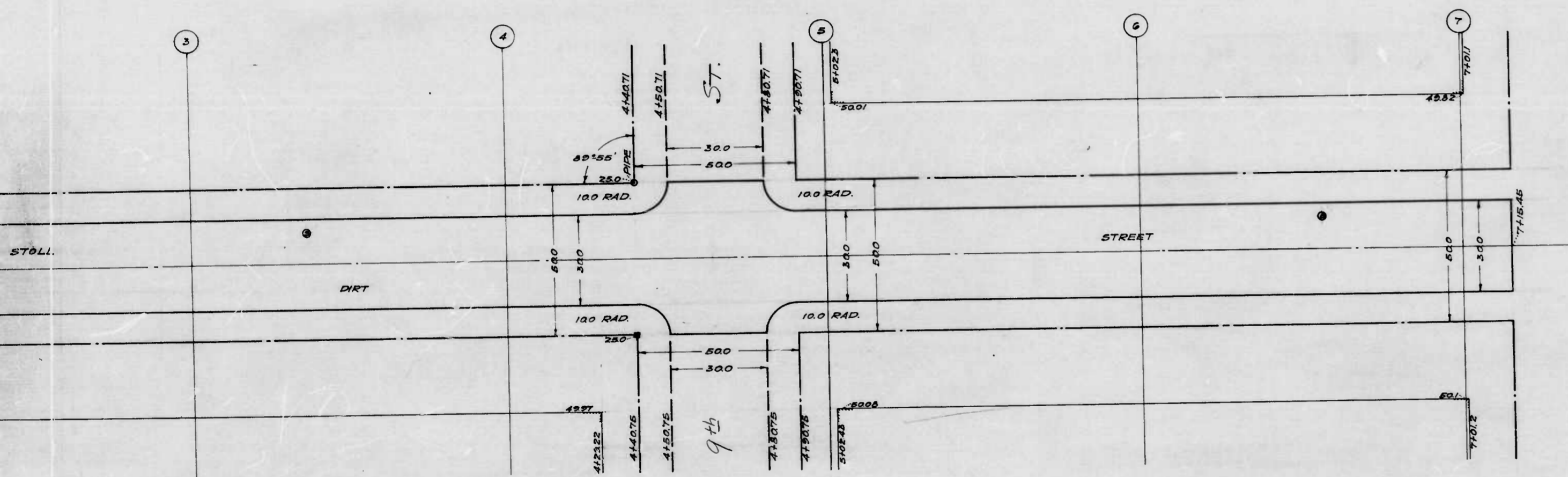
NOTE - THE ISSUANCE OF THIS PLAN DOES NOT COMMIT  
 THE CITY TO THE ACCEPTANCE AND/OR IMPROVEMENT  
 OF ANY THOROUGHFARES SHOWN THEREON.

DRAWN BY A.N. HEDDEN  
 ENGINEER  
 Halsberg  
 ENGINEER IN CHARGE OF PROJECT

shot 1 + shot 2



shot + shot



NOTE - THE ISSUANCE OF THIS PLAN DOES NOT COMMIT THE CITY TO THE ACCEPTANCE AND/OR IMPROVEMENT OF ANY THOROUGHFARES SHOWN THEREON.

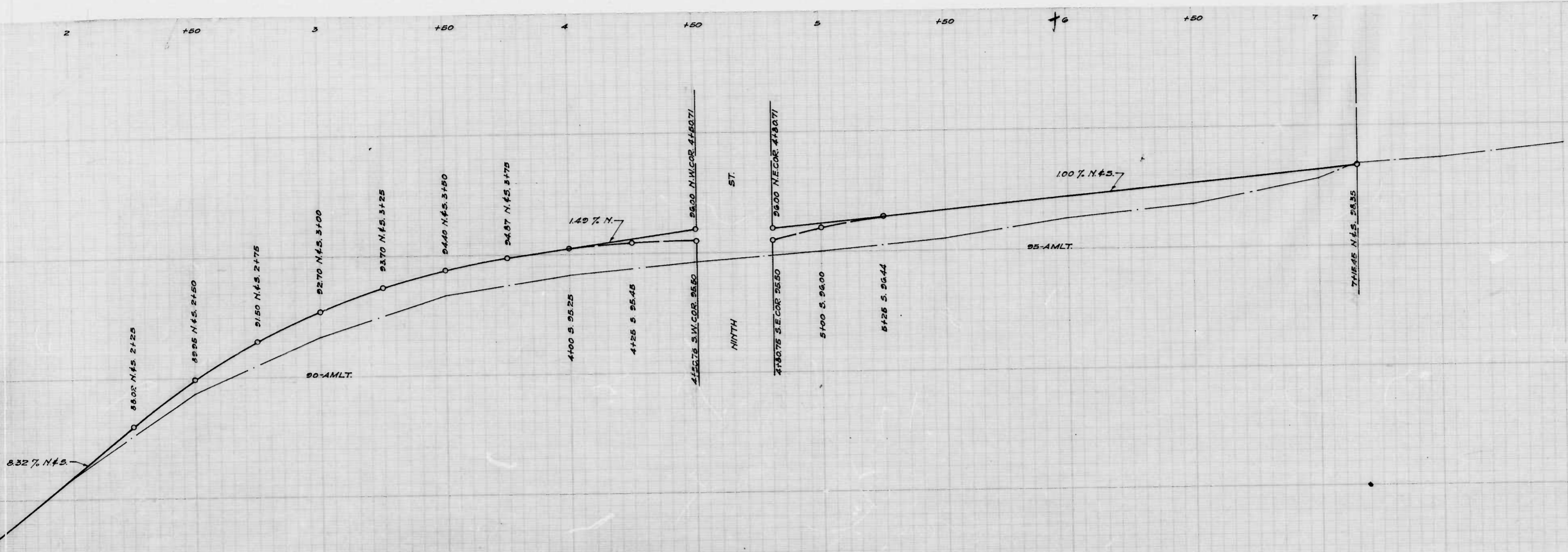
CITY OF BALTIMORE  
DEPARTMENT OF PUBLIC WORKS  
BUREAU OF HIGHWAYS  
LAYOUT OF  
STOLL ST. - EBL. EIGHTH ST. TO EBL. ALE. OF EIGHTH ST.  
STOLL ST. - EBL. ALE. OF 8TH ST. TO 225' E. OF EBL. - 9TH ST.  
CONT. NO. 762

SCALE - 1" = 200'  
BOOK NO. K-171  
JUNE 6, 1942

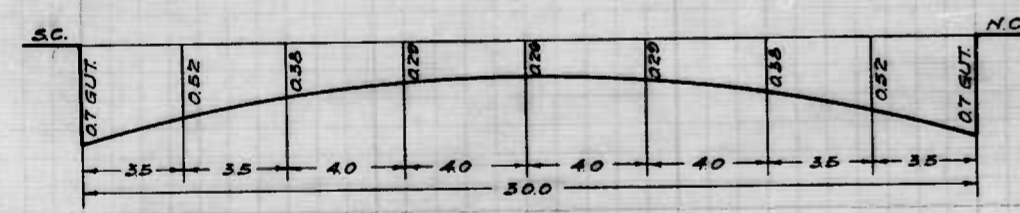
APPROVED: *Ed. J. [Signature]*  
ASSOCIATE ENGINEER  
APPROVED: *Edward J. [Signature]*  
ENGR. PLANS & SURVEYS  
APPROVED: *Geo. B. Carter*  
HIGHWAYS ENGINEER  
APPROVED: *George Cobb*  
CHIEF ENGINEER

shot1 + shot2

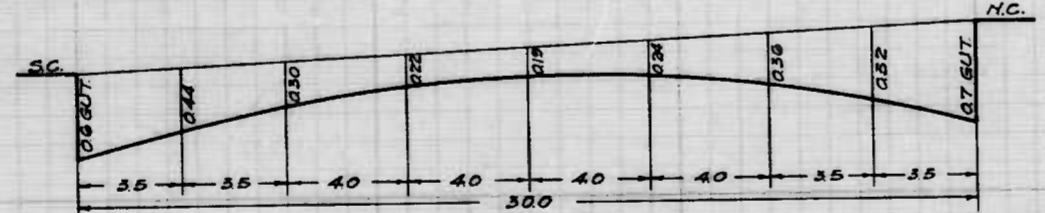
SET BY T.W.S.  
 THE PUBLIC WORKS BUREAU OF THE CITY OF BALTIMORE, 100 N. EIGHTH ST.  
 BALTIMORE, MARYLAND



NOTE - THE ISSUANCE OF THIS PROFILE DOES NOT COMMIT THE CITY TO THE ACCEPTANCE AND/OR IMPROVEMENT OF ANY THOROUGHFARES SHOWN THEREON.



87th ST. TO STA. 4100  
STA. 37+25 TO STA. 41+45



STA. 41+00 @ 41+00

CITY OF BALTIMORE  
DEPARTMENT OF PUBLIC WORKS  
BUREAU OF HIGHWAYS  
ESTABLISHED GRADE OF  
STOLL ST. - E.B.L. - EIGHTH ST. TO E.B.L. - A.E. OF 87th ST.  
STOLL ST. - E.B.L. - A.E. OF 87th ST. TO 225' E. OF E.B.L. - 9th ST.

CONT. NO. 769  
SCALE: HOR. - 1" = 20.0'  
VER. - 1" = 2.0'

BOOK NO. X-171  
JULY 6, 1942

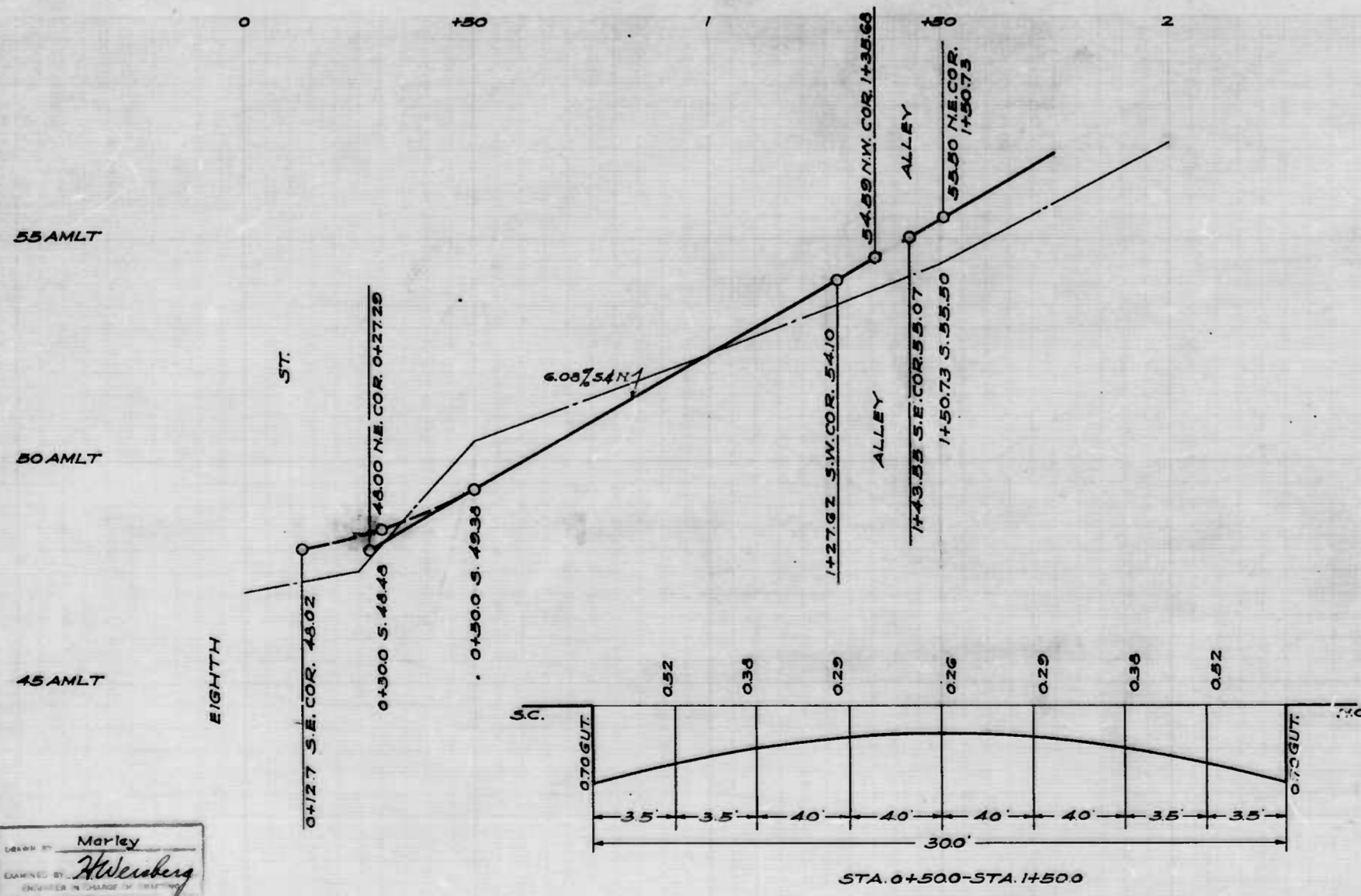
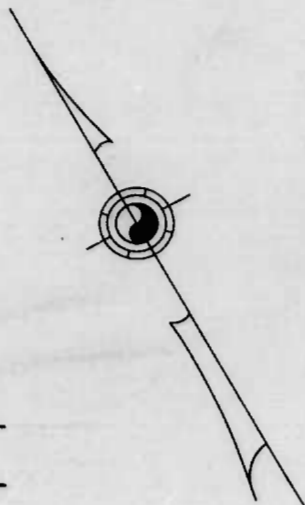
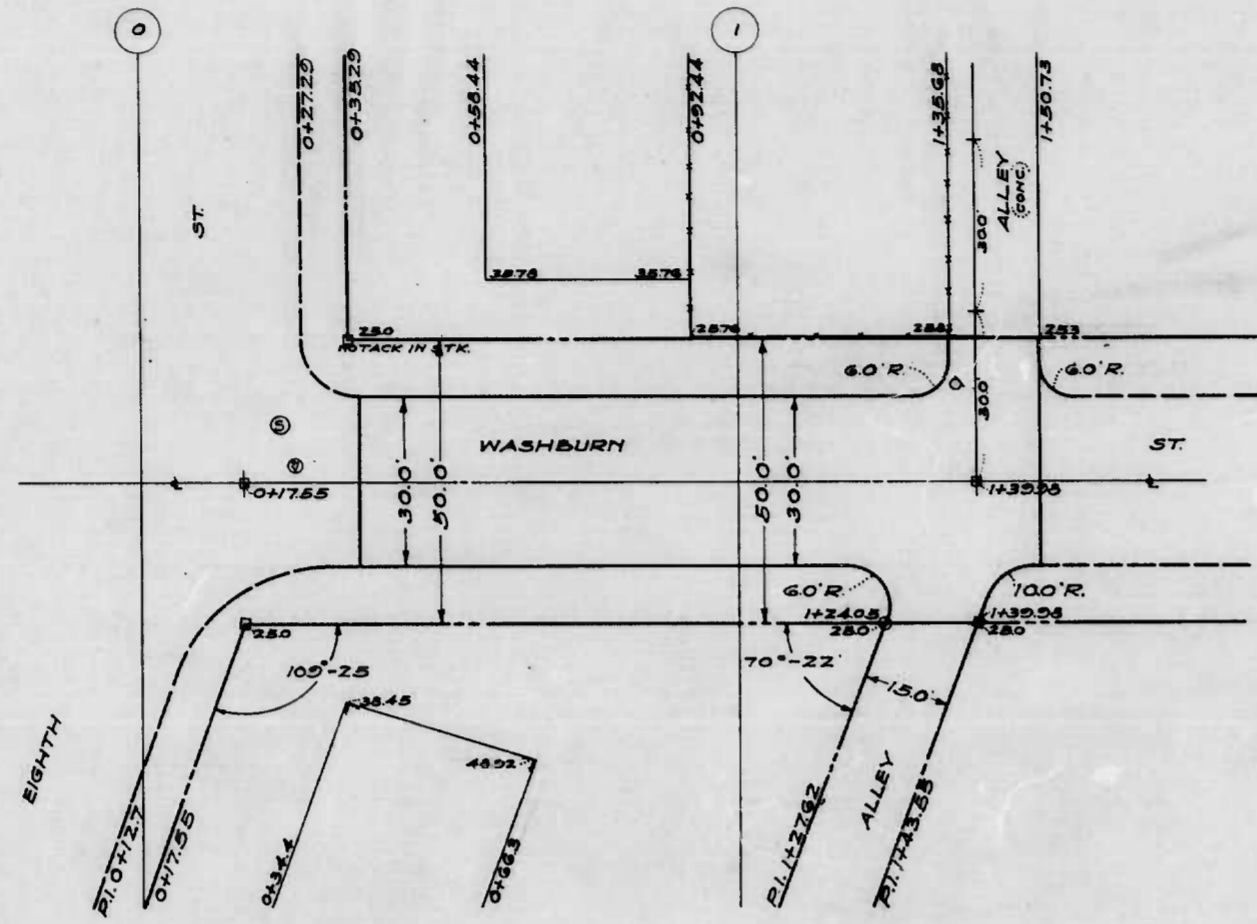
APPROVED: *[Signature]*  
ASSOCIATE ENGINEER

APPROVED: *[Signature]*  
CHIEF ENGINEER

APPROVED: *[Signature]*  
HIGHWAYS ENGINEER

APPROVED: *[Signature]*  
SITE ENGINEER

shot 1 + shot 2



NOTE - THE ISSUANCE OF THIS PLAN & PROFILE DOES NOT COMMIT THE CITY TO THE ACCEPTANCE AND/OR IMPROVEMENT OF ANY THOROUGHFARE SHOWN THERE ON.

CITY OF BALTIMORE  
 DEPARTMENT OF PUBLIC WORKS  
 BUREAU OF HIGHWAYS  
 PLAN & PROFILE  
 WASHBURN ST.-8th ST.-ALLEY E. 8th ST.  
 PLAN - 1"=200' BOOK NO X-193  
 SCALE - HOR - 1"=200' DATE - JUNE 25, 1942  
 VER - 1"=20' CONT. NO 769

CORRECT -  
*Edward J. Maden*  
 ASSOCIATE ENGINEER.  
 APPROVED -  
 ENGR. PLANS & SURVEYS.

APPROVED -  
*Geo. A. Carter*  
 HIGHWAYS ENGINEER.  
 APPROVED -  
*George Colby*  
 CHIEF ENGINEER.

DESIGNED BY: Marley  
 DRAWN BY: H. Weisberg  
 ENGINEER IN CHARGE OF DESIGN

