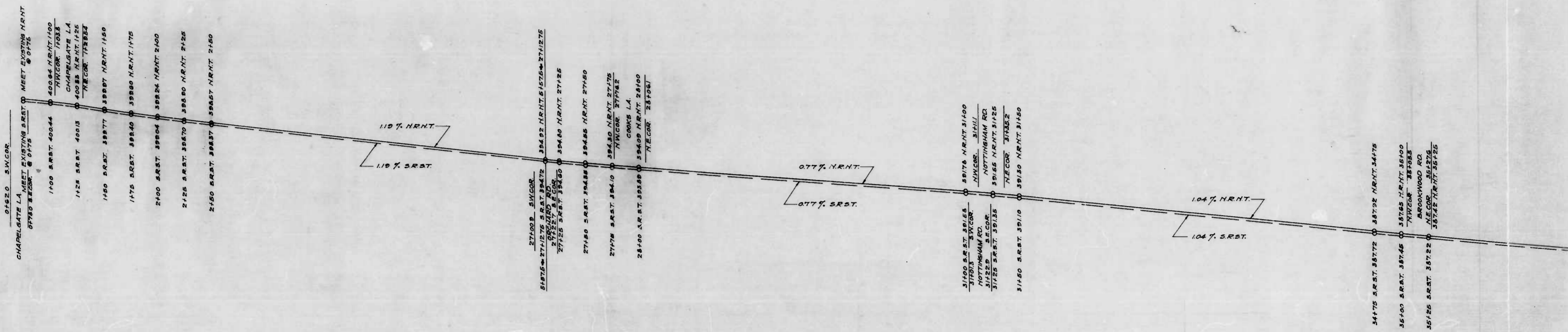


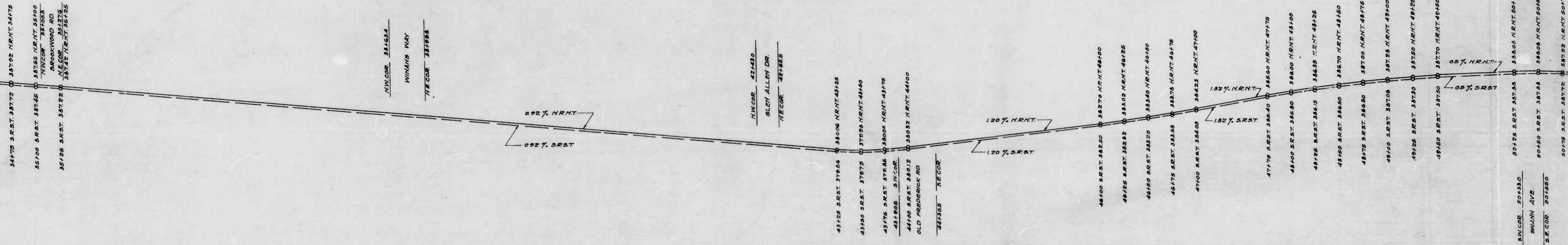
34-13



BENCH MARKS
 E. DOLT FIRE PLUS SWCOR EDMONDSON AVE & CHAPEL GATE LA - ELEV. 403.47
 TOPO. B.M. #4081 - SQUARE CUT IN 3RD STEP FROM BOTTOM ON SIDE ENTRY
 TO CATHOLIC CHURCH EDMONDSON AVE & COOKS LAINE - ELEV. 394.46
 BRASS SCREW IN WEST SIDE PORCH ENTRANCE TO TRINITY PARRISH
 HOUSE SOUTH SIDE EDMONDSON AVE - TEN HILLS - ELEV. 384.96

DRAWN BY: NAVDEN
 CHECKED BY: H. W. ...
 ENGINEER IN CHARGE OF DRAWING

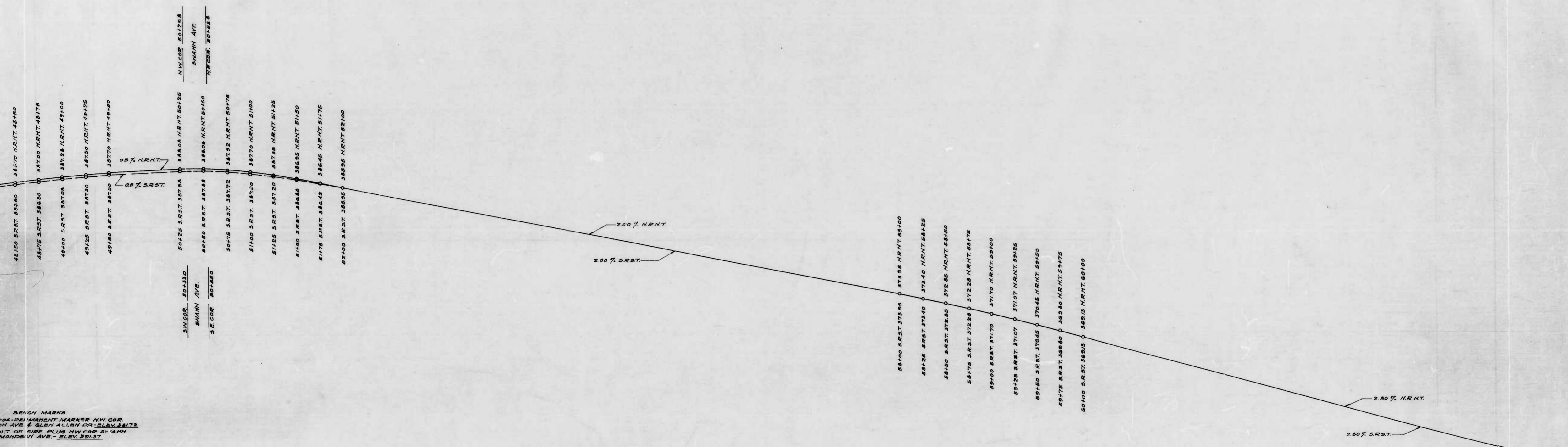
Sheet 1 + Sheet 2



BENCH MARKS
 TYPED B.M. #704 PERMANENT MARKER NW.COR. EDMONDSON AVE. & GLEN ALLEN DR. ELEV. 381.72
 SOUTH BOLT OF PIPE PLUS NW.COR. SWANN AVE. & EDMONDSON AVE. ELEV. 381.37

Shot 2

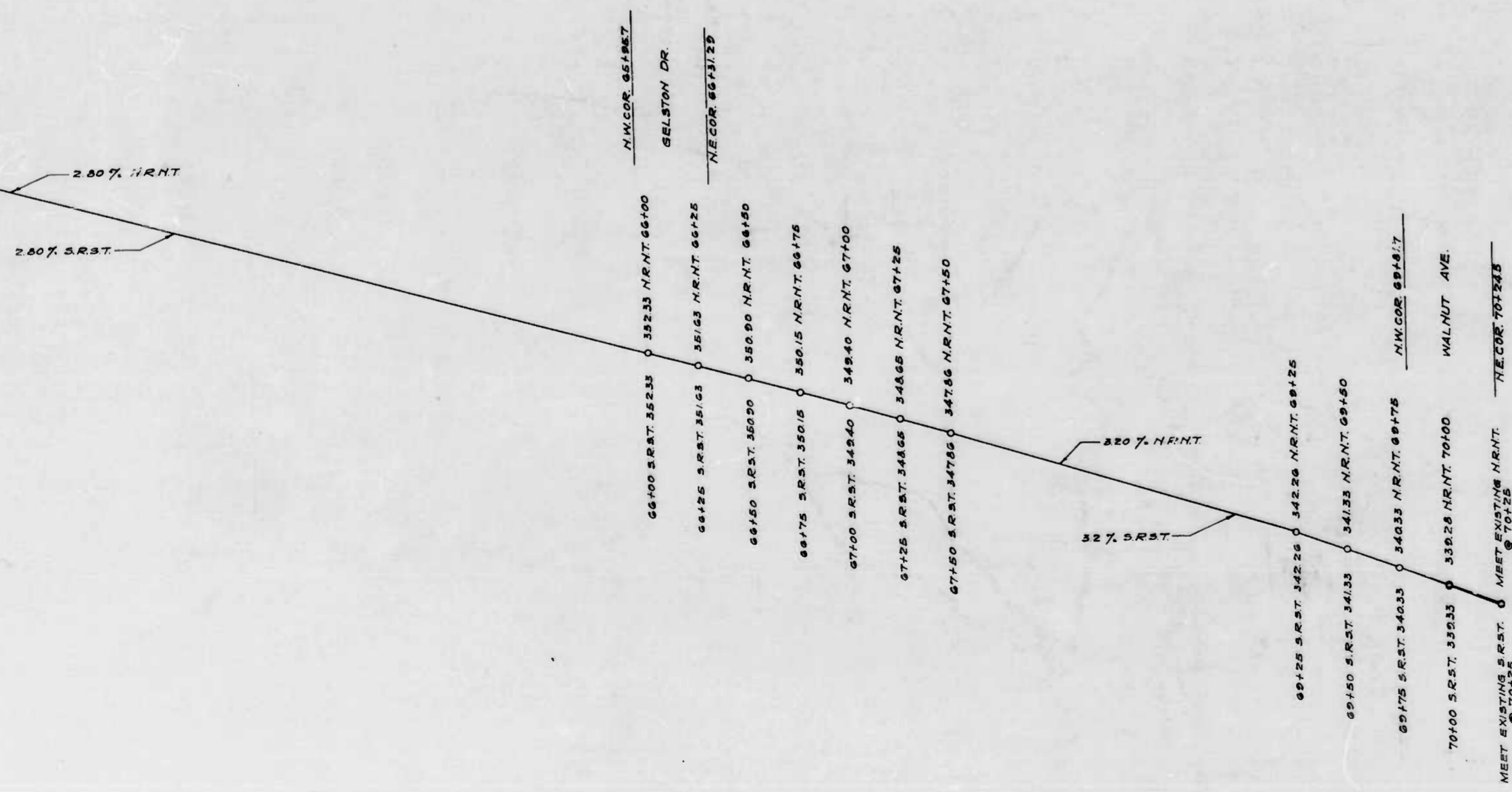
6



Shot 3

Shot

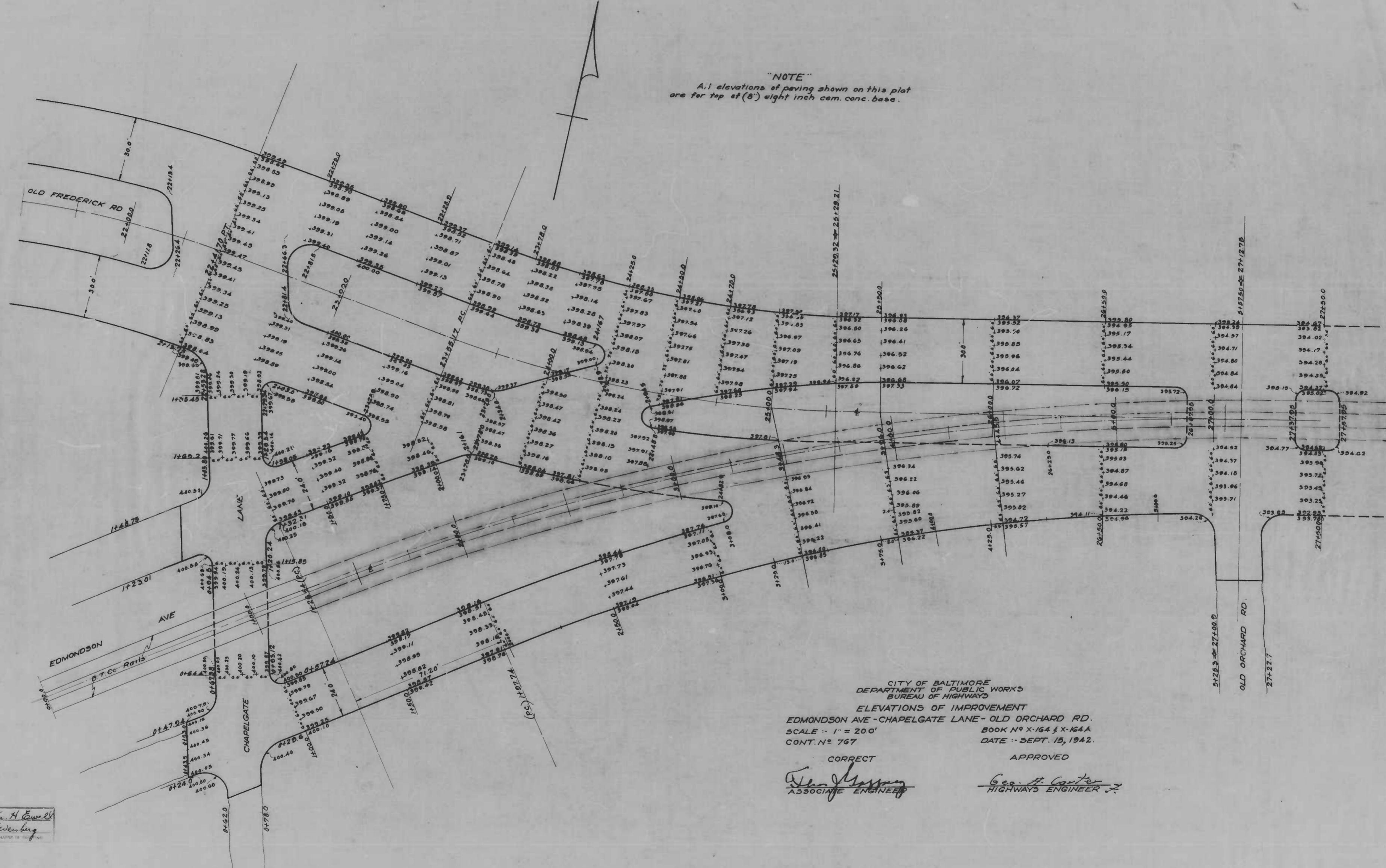
BENCH MARKS
 TWO B.M. # 224 - STANDARD MARKER # 2 AT CORN OF LOADING PLATFORM
 S. SIDE OF EDMONDSON AVE. E. OF WALNUT AVE. — ELEV. 35.473
 TWO B.M. # 4078 - TOP OF VANKEL'S STONE ON LEFT SIDE OF RD NEAR
 ENTRANCE TO NEW CATHEDRAL CEMETERY. — ELEV. 35.435



CITY OF BALTIMORE
 DEPARTMENT OF PUBLIC WORKS
 BUREAU OF HIGHWAYS
 PROFILE OF RAILWAY TRACKS
 EDMONDSON AVE - CHAPEL GATE LA TO WALNUT AVE.
 CONT. NOS. 764 TO 767
 SCALES: HOR. 1" = 40.0' SEPT. 11, 1942
 VER. 1" = 4.0'
 APPROVED: *Ed. Gray* APPROVED: *Geo. A. Carter*
 ASSOCIATE ENGINEER HIGHWAYS ENGINEER

* sheet

"NOTE"
All elevations of paving shown on this plot
are for top of 8" eight inch con. conc. base.

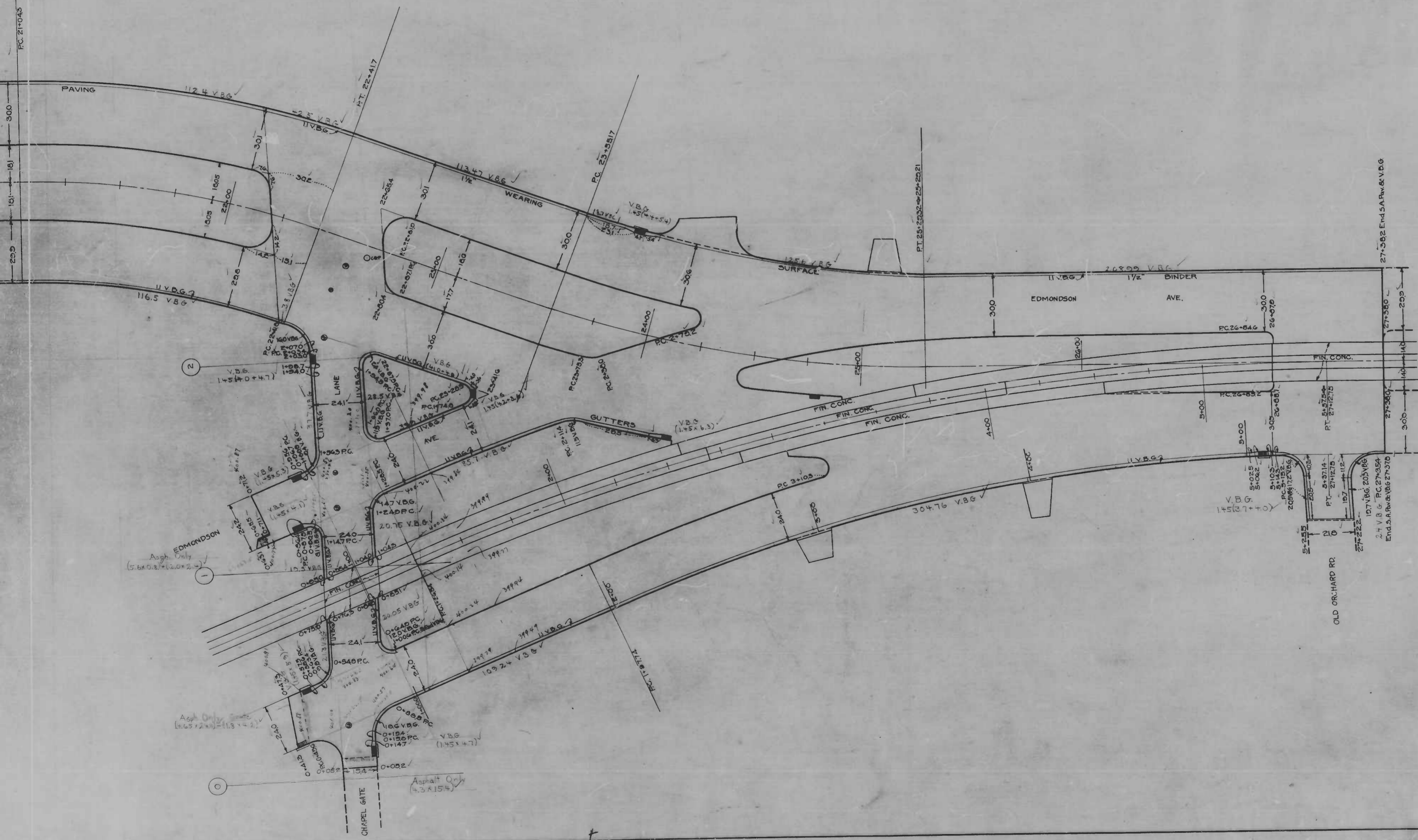


CITY OF BALTIMORE
 DEPARTMENT OF PUBLIC WORKS
 BUREAU OF HIGHWAYS
 ELEVATIONS OF IMPROVEMENT
 EDMONDSON AVE-CHAPELGATE LANE- OLD ORCHARD RD.
 SCALE: 1" = 20.0'
 CONT. N^o 767

APPROVED
Geo. H. Carter
 HIGHWAYS ENGINEER

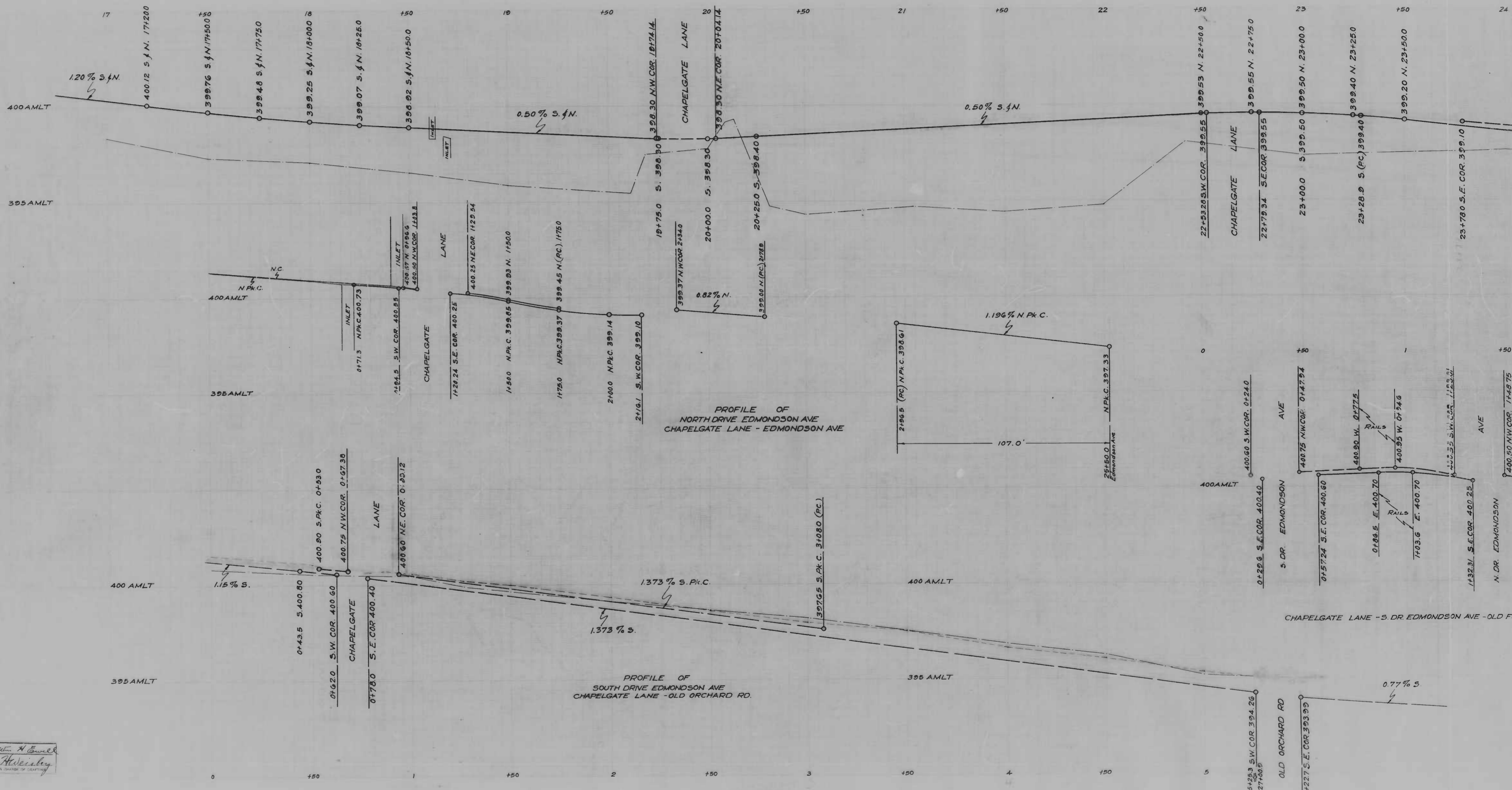
CORRECT
Wm. J. Mason
 ASSOCIATE ENGINEER

DESIGNED BY: *Wm. H. Conwell*
 DRAWN BY: *Hewesburg*

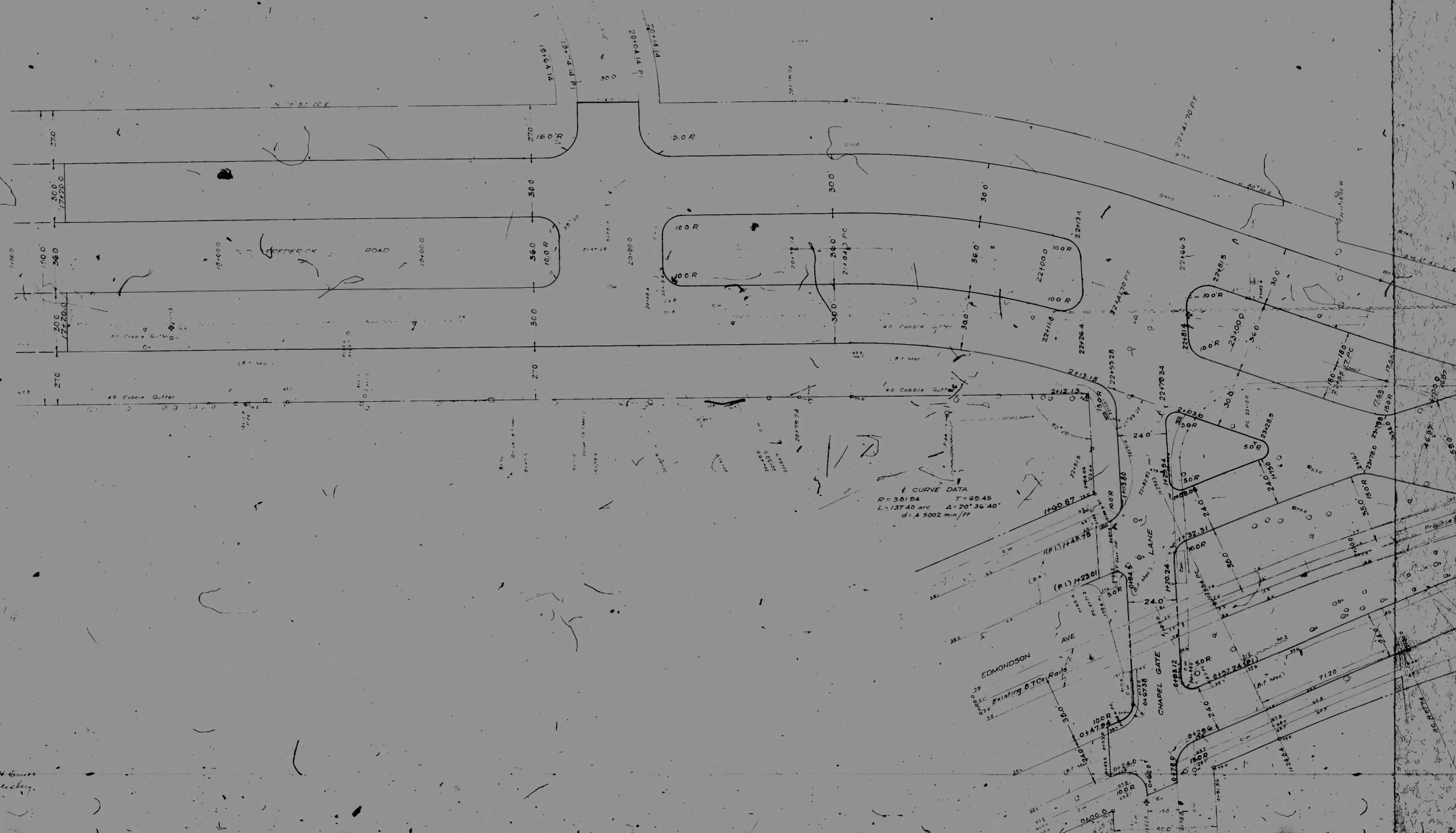


CITY OF BALTIMORE
 DEPARTMENT OF PUBLIC WORKS
 BUREAU OF HIGHWAYS
 CONT. NO. 767X
 EDMONDSON AVE-OLD ORCHARD RD-CHAPEL GATE LANE
 OLD FREDERICK RD-CHAPEL GATE LANE
 SHEET ASPHALT PAVING 1/2 WEAR. SUR. 1/2 BINDER
 VITRIFIED BRICK GUTTERS
 F. FLANIGAN & SONS INC. CONTRACTORS
 STARTED 4-3-43 COMPLETED 10-30-43
 SCALE 1" = 20.0' JANUARY 12, 1944

Shot 1 Shot 2

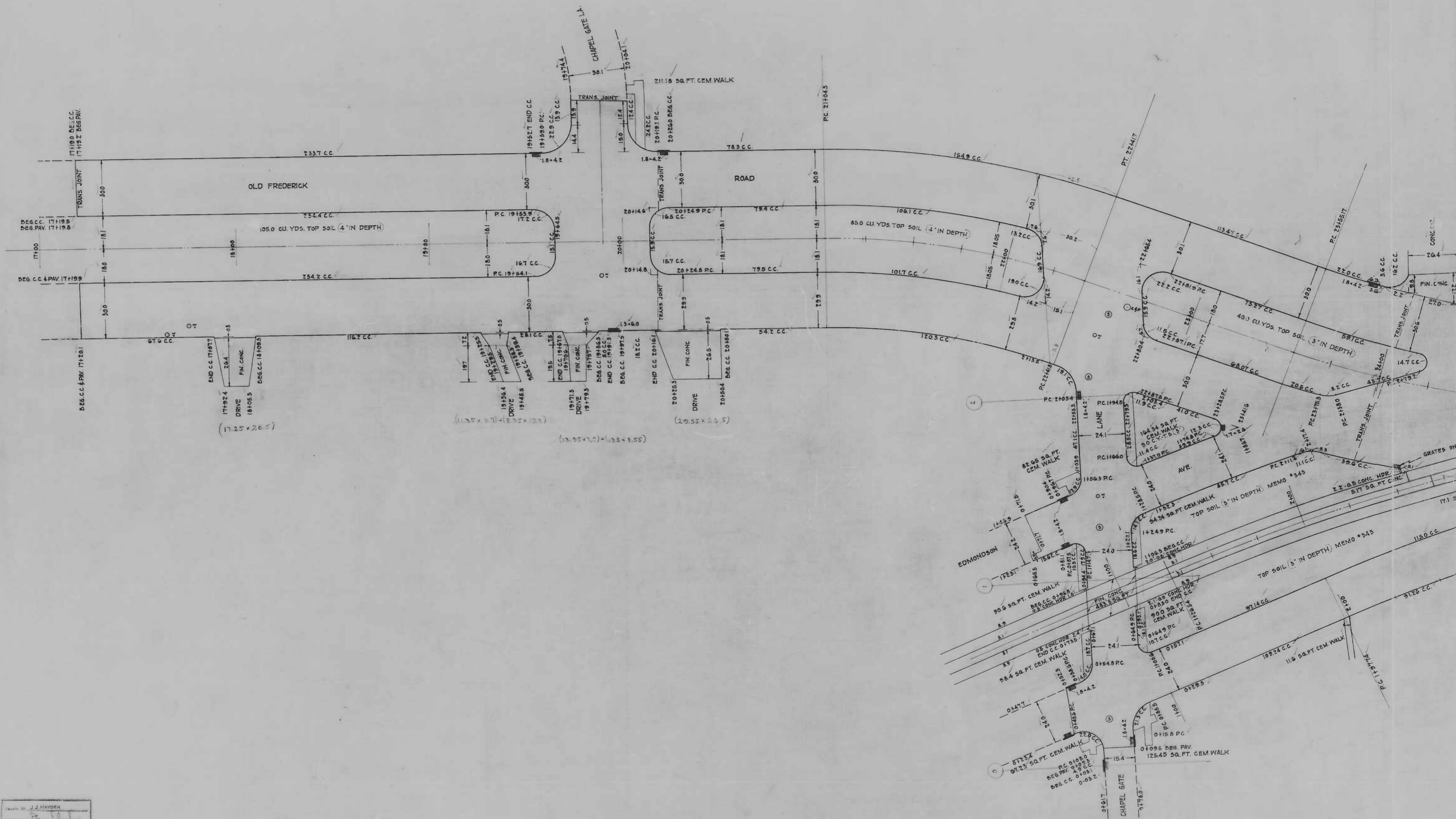


OLD HEDDERICK RD - 300' W. CHURCH CTR
EDMONDSON AVE - 10' S. CHURCH CTR
EDMONDSON AVE - 10' S. CHURCH CTR
EDMONDSON AVE - 10' S. CHURCH CTR



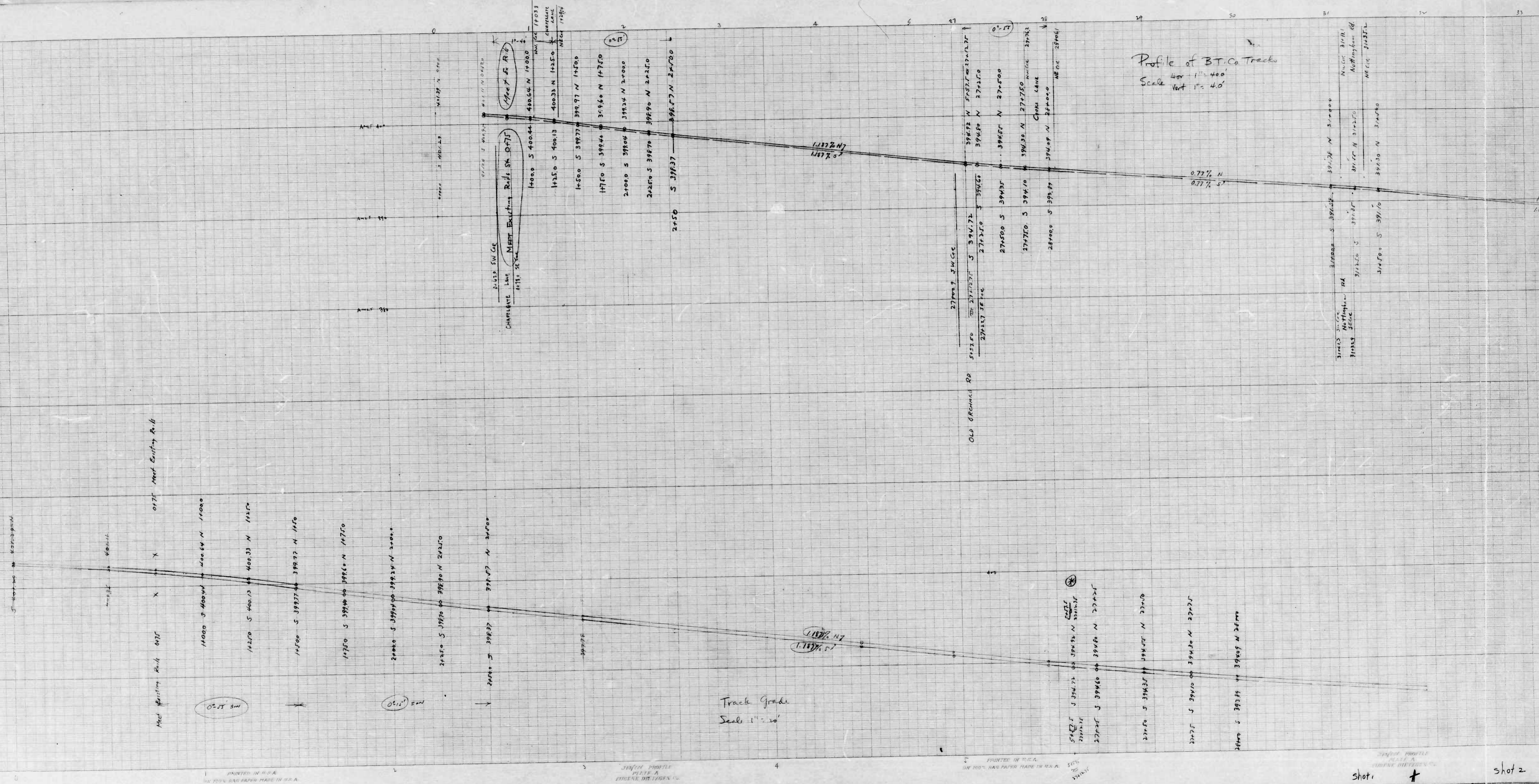
$R = 301.94$ $T = 60.45$
 $L = 137.40$ arc $\Delta = 20^\circ 36' 40''$
 $d = 4.5002$ min/ft

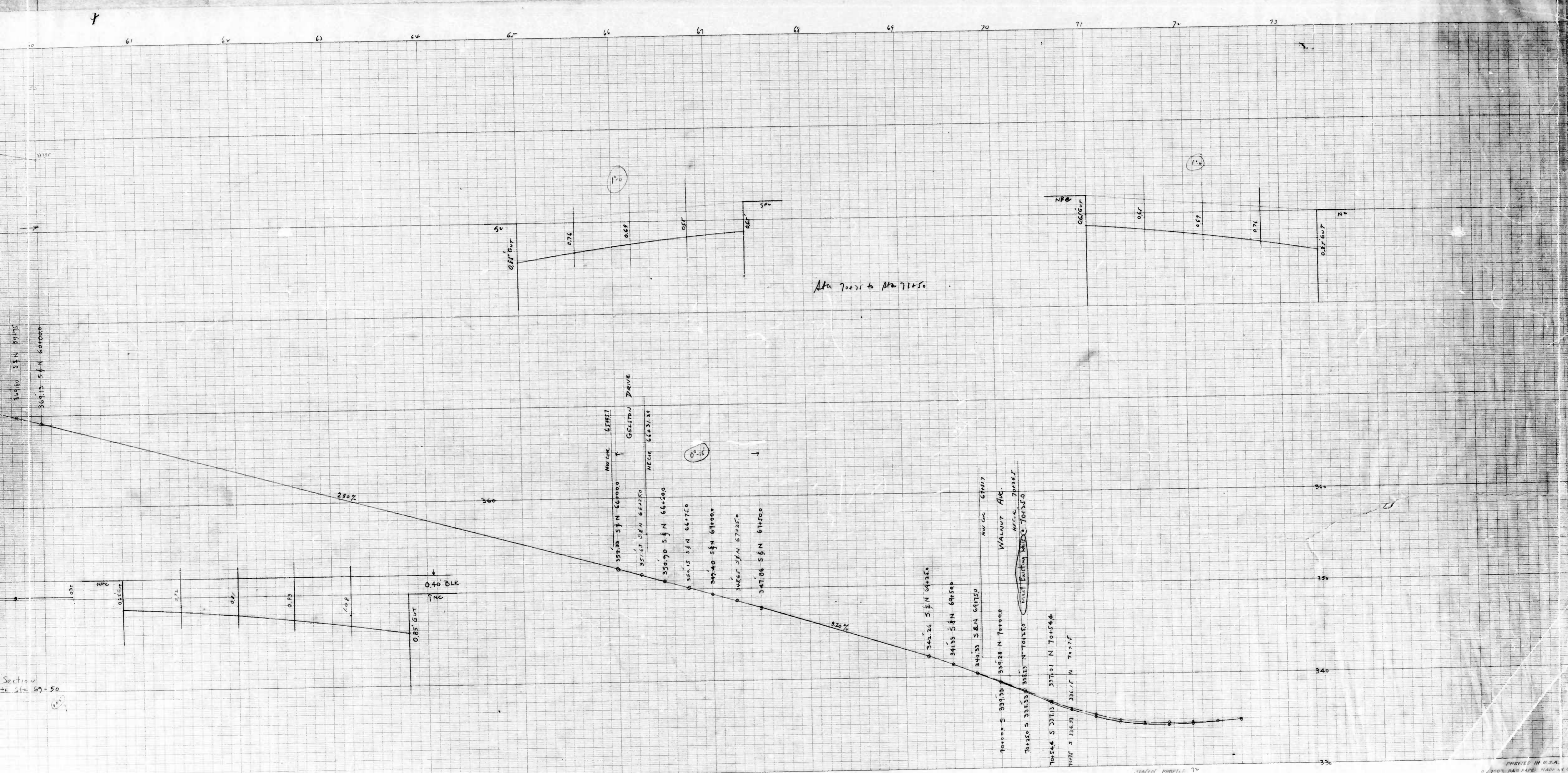
H. Eckberg



DRAWN BY J.J. HAYDEN
 CHECKED BY [Signature]
 DATE [Date]

Sheet 6 of 6





34986.5 N 51° 30' 00" W 60+000
36414.5 N 51° 30' 00" W 60+000

Section to Sta 59+50

At Sta 70000 to Sta 71000

Mu One 65417
GELTIN DRIVE
NECC 6623/31

Mu One 65417
WALNUT AVE
NECC 7000/31

30% PROFILE
PLATE A
BURKE DIETZEN CO.

PRINTED IN U.S.A.
ON 100% RAG PAPER MADE IN U.S.A.

30% PROFILE 70
PLATE A
BURKE DIETZEN CO.

PRINTED IN U.S.A.
ON 100% RAG PAPER MADE IN U.S.A.

shot 4

1476