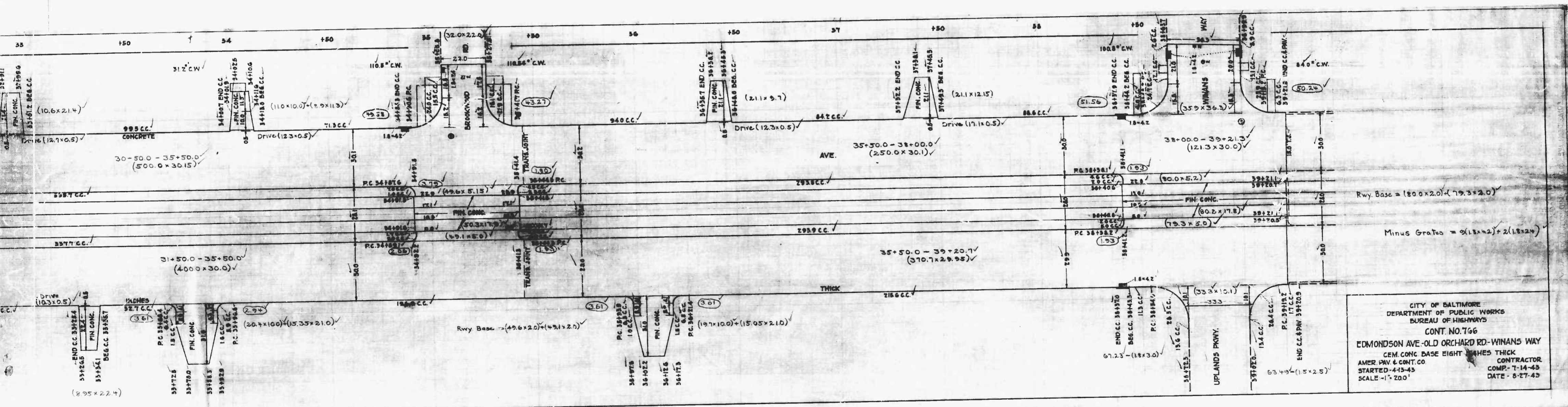


DRAWN BY J. J. HAYDEN  
 ENGINEER  
*J. J. Hayden*

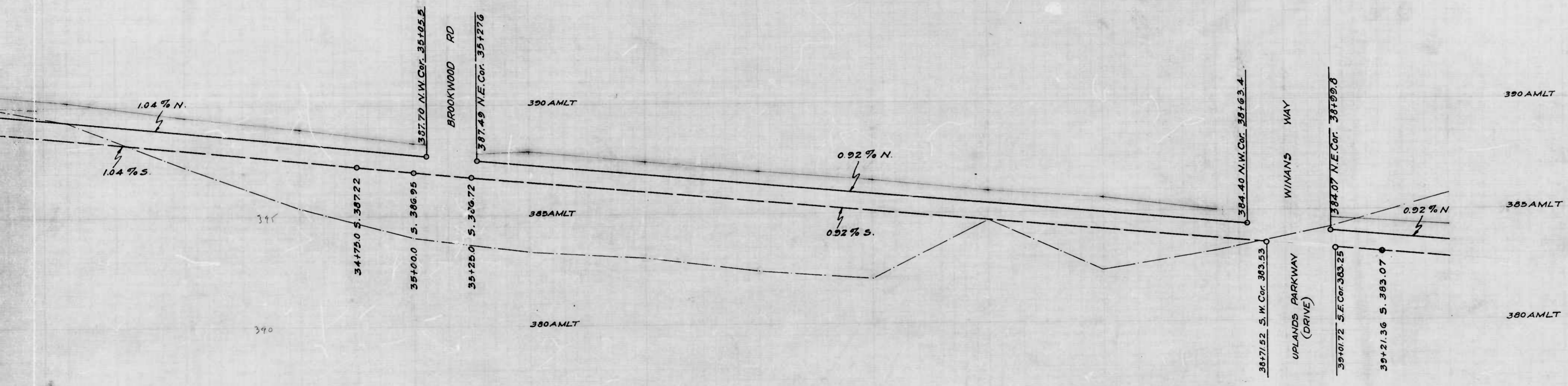
shot 1 + shot 2



CITY OF BALTIMORE  
 DEPARTMENT OF PUBLIC WORKS  
 BUREAU OF HIGHWAYS  
 CONT NO. 766  
 EDMONDSON AVE.-OLD ORCHARD RD.-WINANS WAY  
 CEM. CONC. BASE EIGHT INCHES THICK  
 AMER. PAV. & CONT. CO. CONTRACTOR  
 STARTED-4-15-45 COMP. 7-14-45  
 SCALE - 1" = 200' DATE - 8-27-45

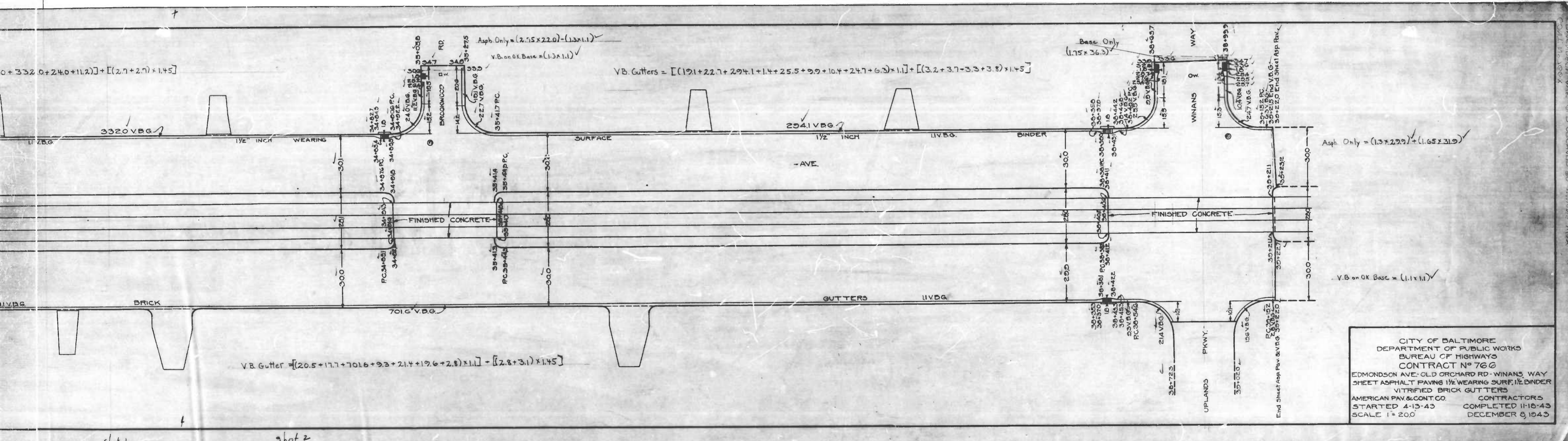
shot 1 + shot 2

+50 34 +50 35 +50 36 +50 37 +50 38 +50 39



CITY OF BALTIMORE  
 DEPARTMENT OF PUBLIC WORKS  
 BUREAU OF HIGHWAYS  
 PROFILE OF  
 EDMONDSON AVE - WINANS WAY - OLD ORCHARD RD.  
 HORIZ. 1" = 200'  
 SCALE: VERT. 1" = 20' DATE: SEPT 2, 1942  
 CONT. N° 766

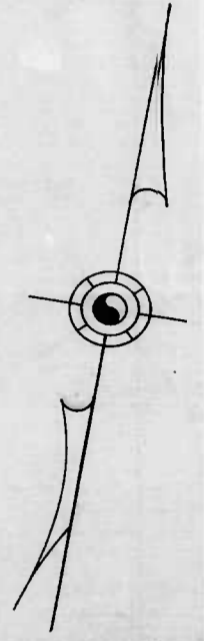
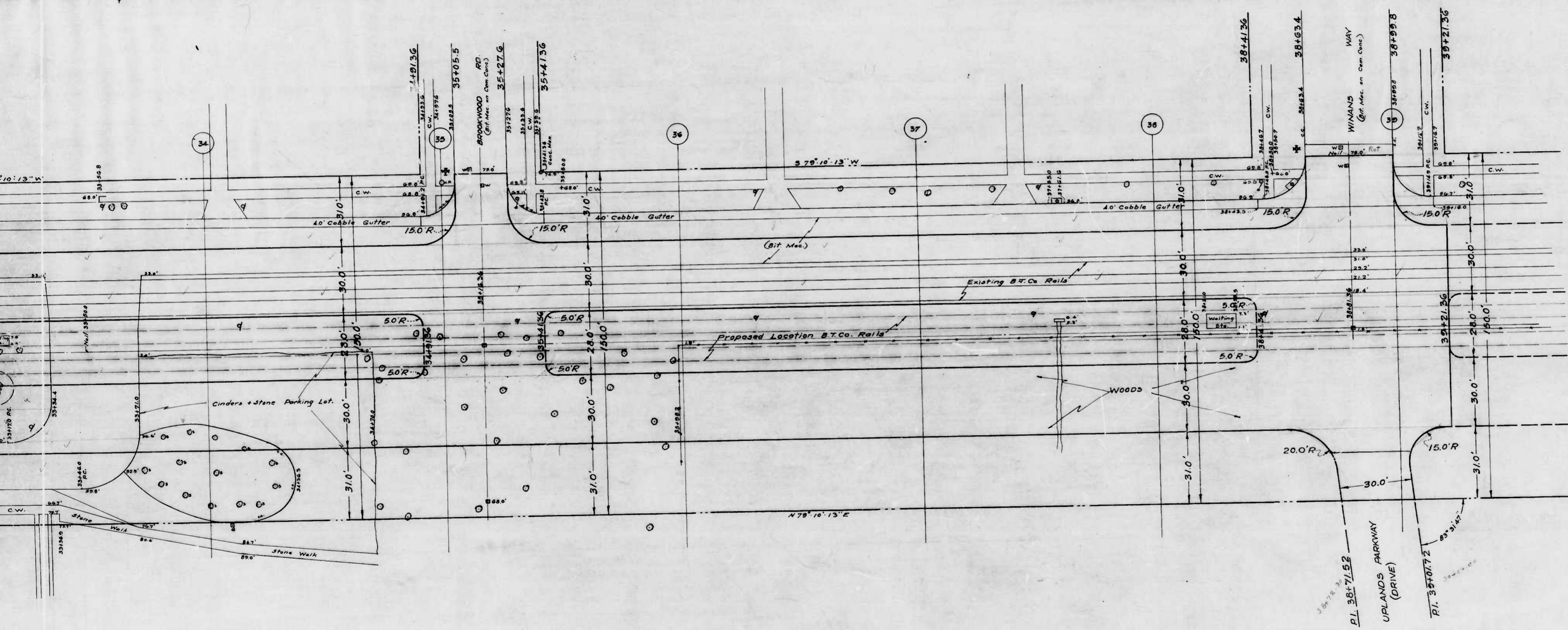
CORRECT APPROVED  
*[Signature]* *[Signature]*  
 ASSOCIATE ENGINEER HIGHWAYS ENGINEER J.  
 APPROVED APPROVED  
*[Signature]* *[Signature]*  
 ENGR. PLANS & SURVEYS CHIEF ENGINEER



CITY OF BALTIMORE  
 DEPARTMENT OF PUBLIC WORKS  
 BUREAU OF HIGHWAYS  
 CONTRACT NO. 766  
 EDMONDSON AVE. - OLD ORCHARD RD. - WINANS WAY  
 SHEET ASPHALT PAVING 1 1/2" WEARING SURF, 1 1/2" BINDER  
 VITRIFIED BRICK GUTTERS  
 AMERICAN PAV. & CONT. CO. CONTRACTORS  
 STARTED 4-15-43 COMPLETED 11-16-43  
 SCALE 1" = 20' DECEMBER 8, 1943

shot 1 shot 2

EDMONDSON AVE. TO OLD ORCHARD RD. - WINANS WAY - CIVIL ENGINEERING



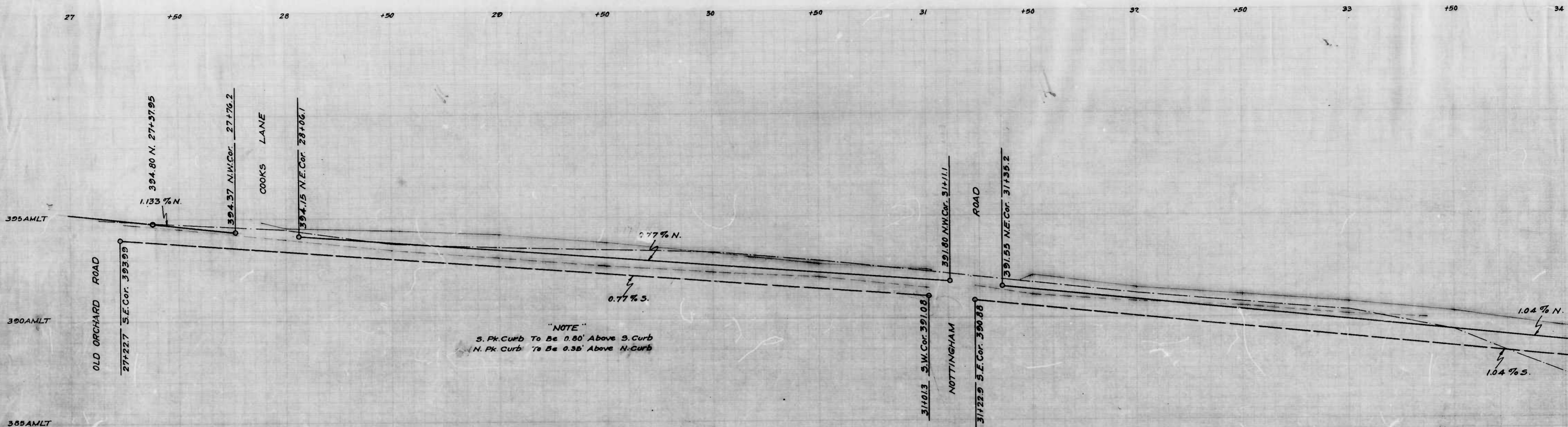
CITY OF BALTIMORE  
 DEPARTMENT OF PUBLIC WORKS  
 BUREAU OF HIGHWAYS  
 PLAN OF  
 EDMONDSON AVE - WINANS WAY - OLD  
 SCALE: 1" = 20.0'  
 CONT. NO. 766  
 DATE: 11-1-55  
 CORRECT  
 APPROVED

*Edmund H. Hester*  
 ASSOCIATE ENGINEER  
 APPROVED

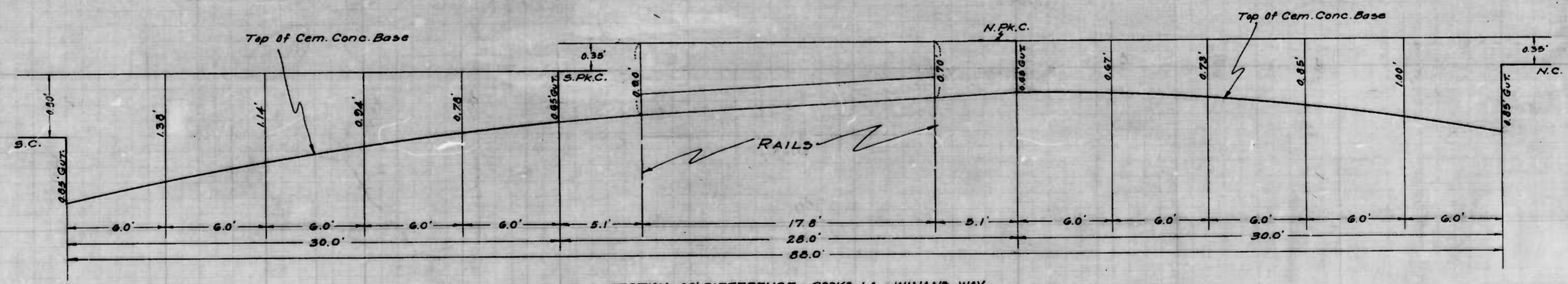
*George H. Hester*  
 ENGR. PLANS & SURVEYS  
 CHIEF

Sheet 2

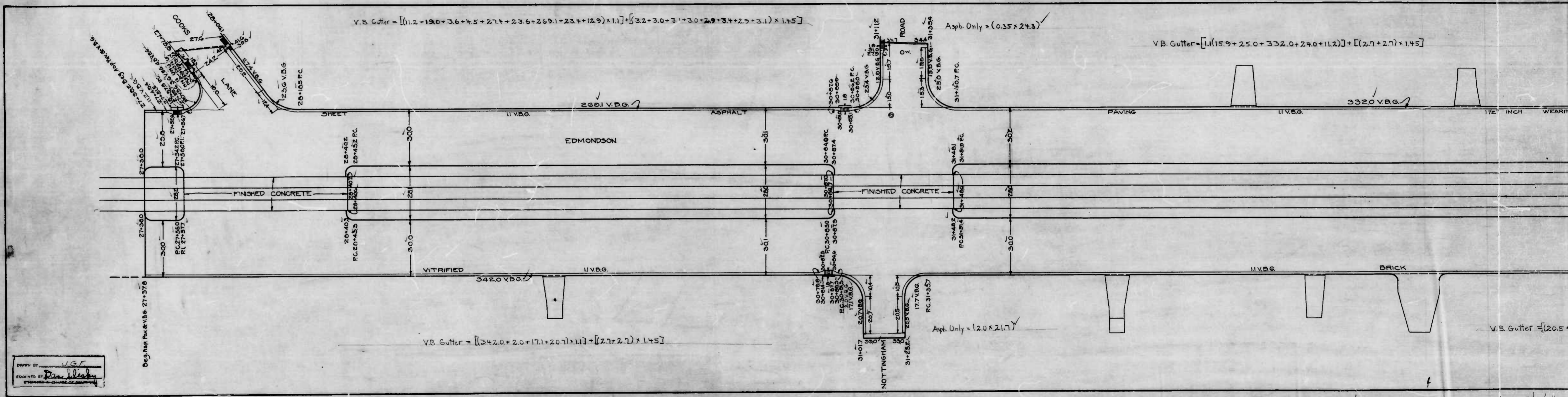
1-1-55



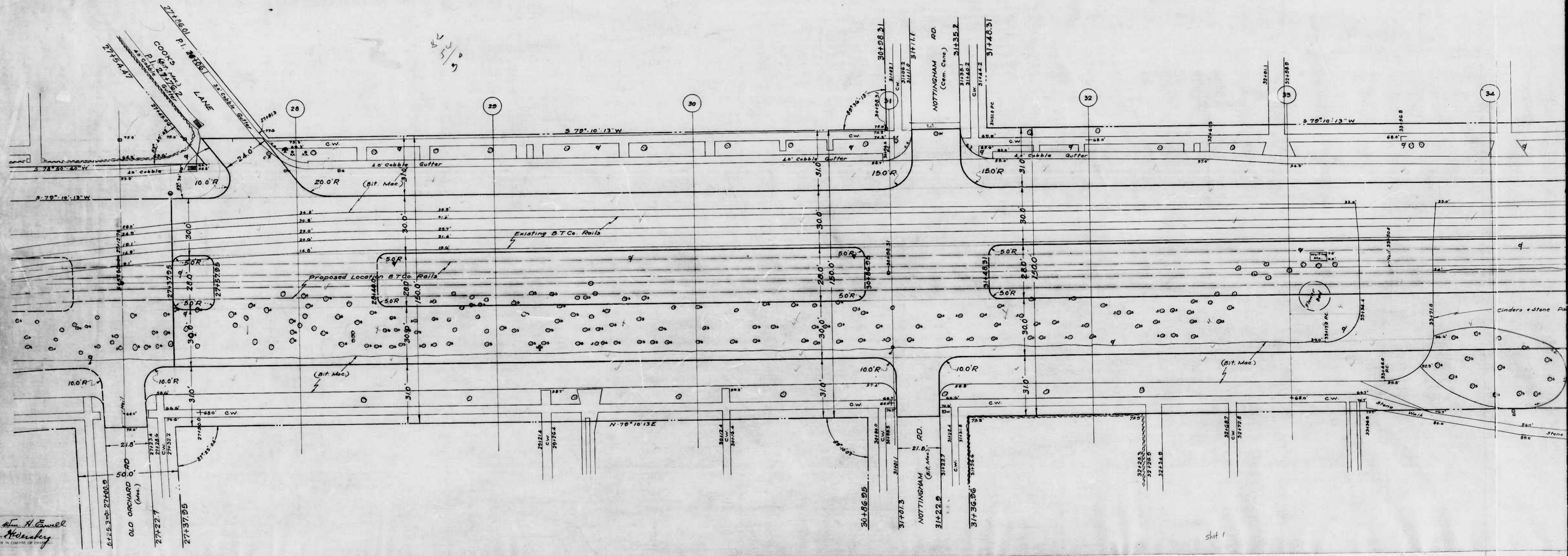
"NOTE"  
 S. Pk. Curb To Be 0.80' Above S. Curb  
 N. Pk. Curb To Be 0.35' Above N. Curb



DESIGNED BY *Wm. H. Sewell*  
 ENGINEERED BY *H. H. Hensberg*  
 ENGINEER IN CHARGE OF DIST.



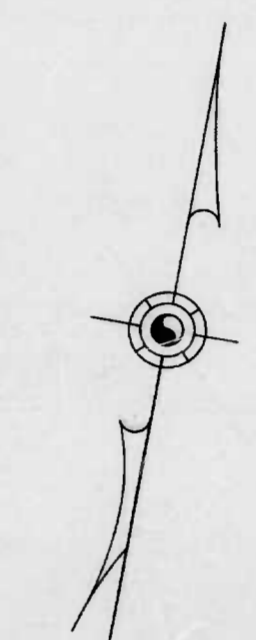
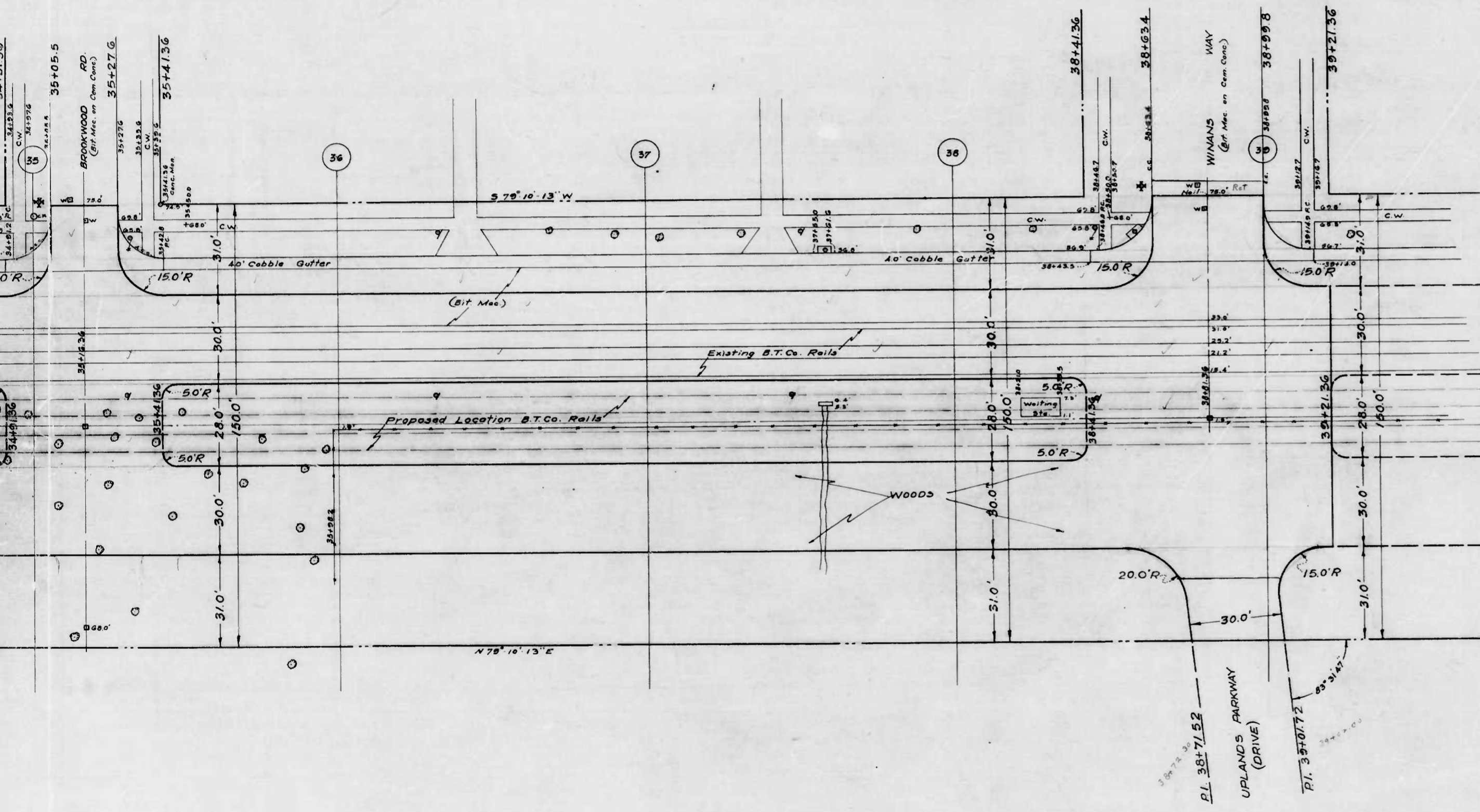
2/3/5



Drawn by *Henry H. Cassell*  
 FORWARDED BY *Heesberg*  
 ENGINEER IN CHARGE OF CITY

Sheet 1





CITY OF BALTIMORE  
 DEPARTMENT OF PUBLIC WORKS  
 BUREAU OF HIGHWAYS  
 PLAN OF  
 EDMONDSON AVE. - WINANS WAY - OLD ORCHARD RD.  
 SCALE: 1" = 20.0'  
 CONT. NO. 766  
 CORRECT

BOOK N° X-164, & X-164A  
 DATE: SEPT. 1, 1942  
 APPROVED

*Edmund Backe*  
 ASSOCIATE ENGINEER  
 APPROVED

*Geo. H. Carter*  
 HIGHWAYS ENGINEER  
 APPROVED

*Edmund Backe*  
 ENGR. PLANS & SURVEYS

*Genze Coble*  
 CHIEF ENGINEER

Sheet 2

Sheet 3