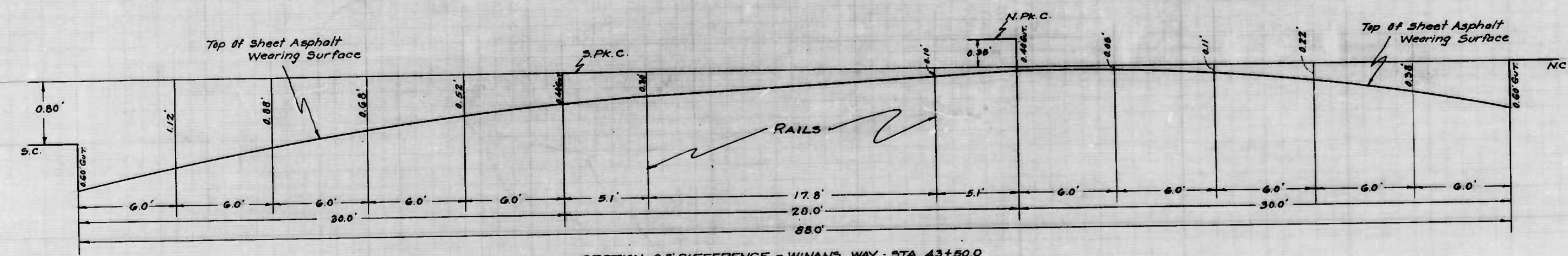
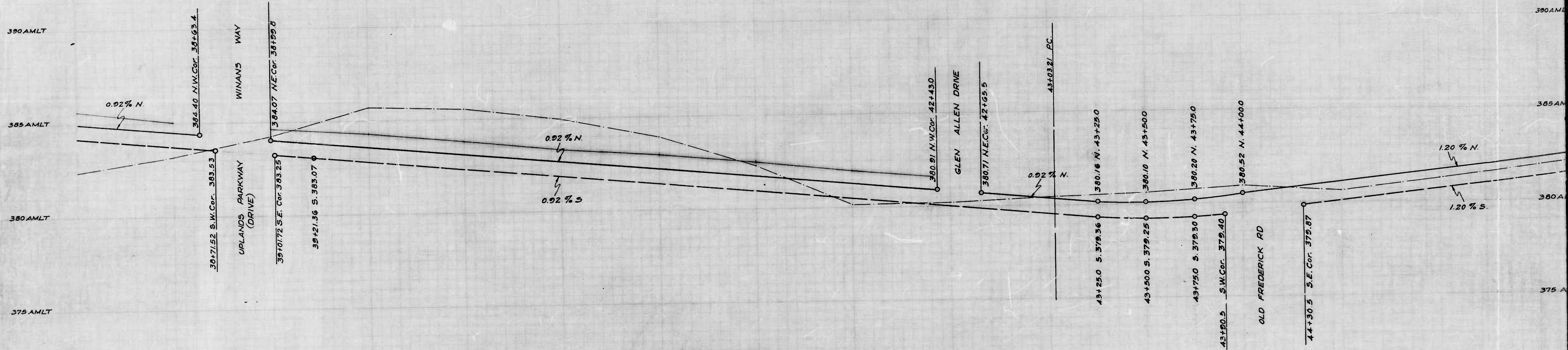


"NOTE"  
 From WINANS WAY TO GLEN ALLEN DRIVE  
 Elevation of South Parking Curb to be 0.80' above South Curb  
 Elevation of North Parking Curb to be 0.35' above North Curb

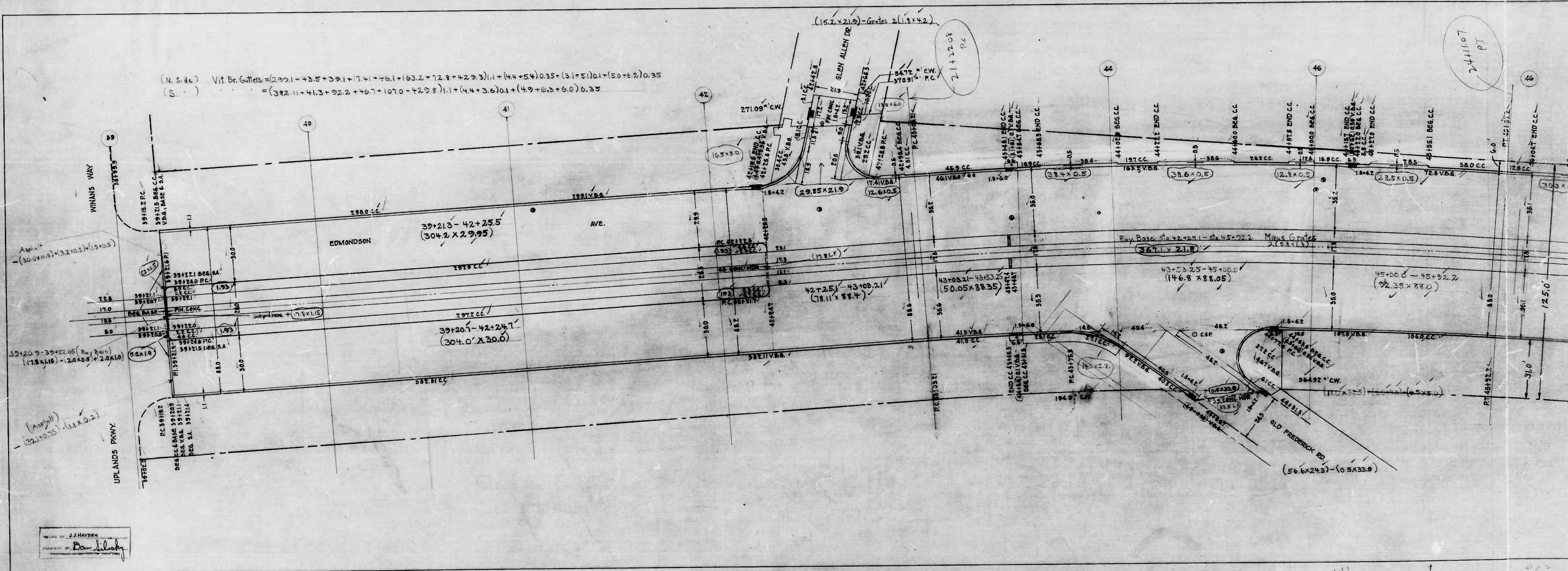


SECTION - 0.8' DIFFERENCE - WINANS WAY - STA 43+50.0

DESIGNED BY  
*H. H. Howard*  
 SUPERVISOR  
*H. H. Howard*  
 ENGINEER



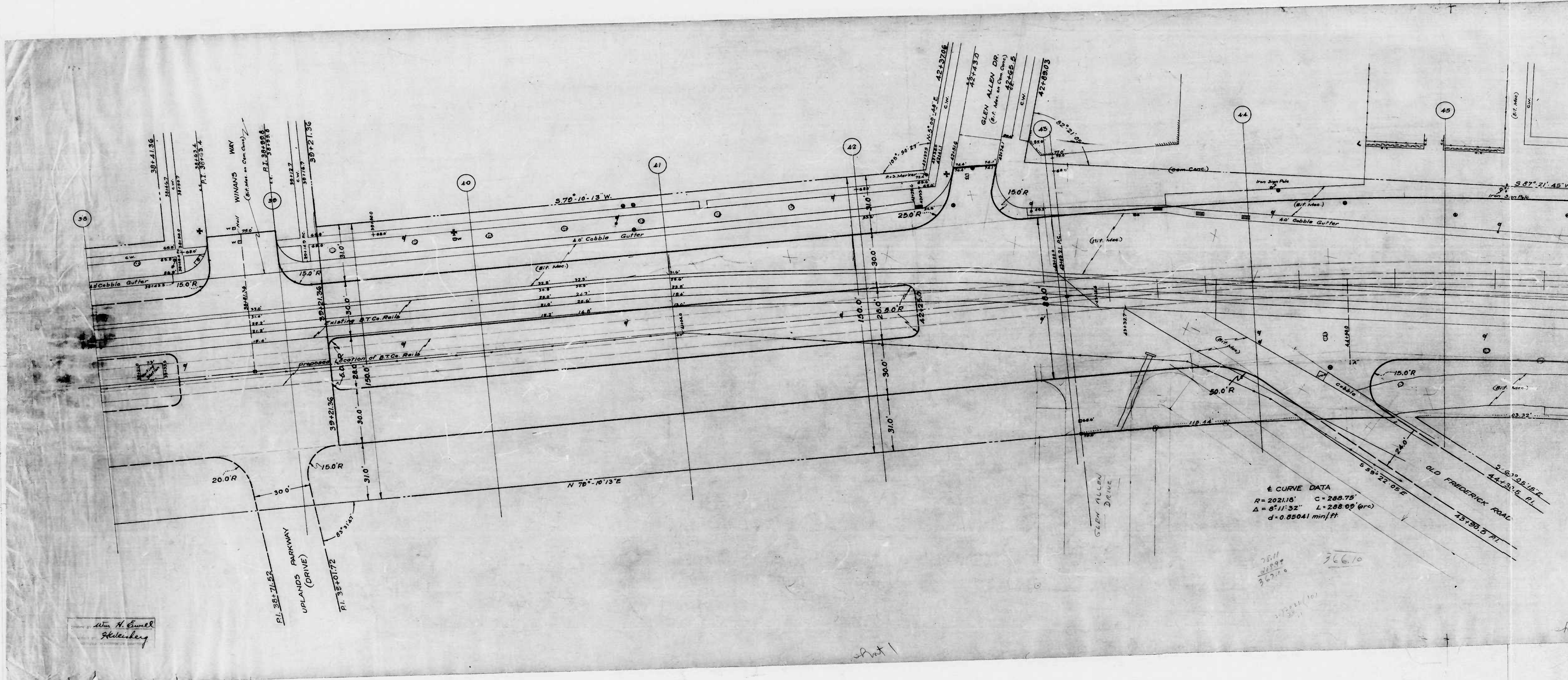
(N. Side) Vlt Br. Gutters =  $(299.1 + 43.5 + 39.1 + 17.4 + 6.1 + 163.2 + 72.8 + 42.9.3) \cdot 1.1 + (4.4 + 5.4) \cdot 0.35 + (3.1 + 5.1) \cdot 0.1 + (50 + 5.2) \cdot 0.35$   
 (S. ) =  $(382.11 + 41.3 + 92.2 + 46.7 + 107.0 + 42.9.8) \cdot 1.1 + (4.4 + 3.6) \cdot 0.1 + (4.9 + 6.3 + 6.0) \cdot 0.35$



DESIGNED BY J.J. HAYDEN  
 CHECKED BY Dan Lilich

241107  
 PT





CURVE DATA  
 R = 2021.16'    C = 288.75'  
 Δ = 6° 11' 32"    L = 288.09' (arc)  
 d = 0.85041 min/ft

Wm. H. Emsel  
 Helenberg

Sheet 1

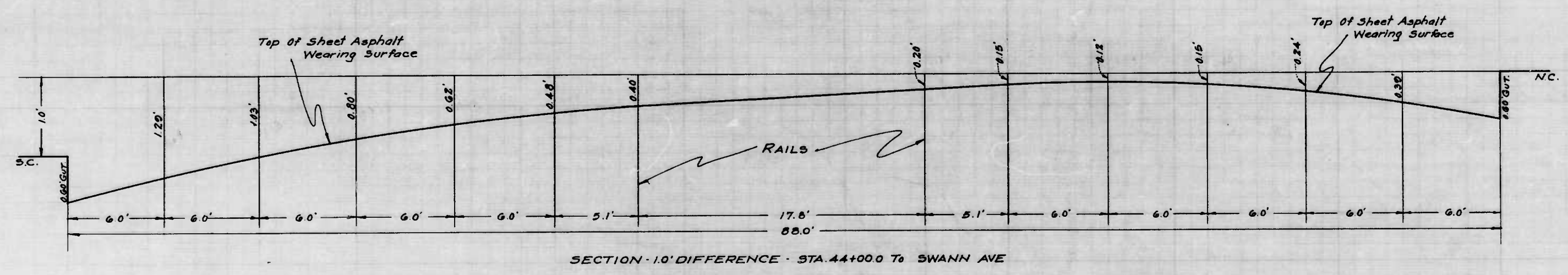
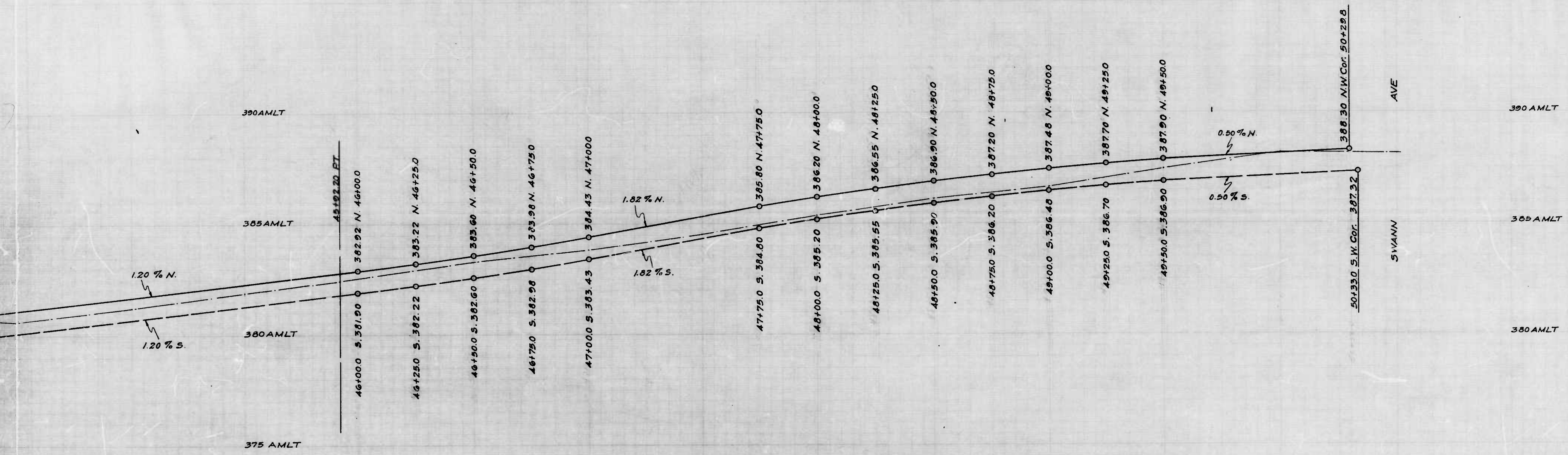
75/11  
 3/28/97  
 3/27/98

366.10

1/27/98 (10)  
 3/11



+51 45 +50 46 +50 47 +50 48 +50 49 +50 50



CITY OF BALTIMORE  
DEPARTMENT OF PUBLIC WORKS  
BUREAU OF HIGHWAYS

PROFILE OF  
EDMONDSON AVE - SWANN AVE - WINANS WAY

SCALE: HOR: 1" = 20.0'    BOOK N° X-164 & X-164-A  
VER: 1" = 2.0'    DATE: SEPT. 3, 1942

CONT. N° 765

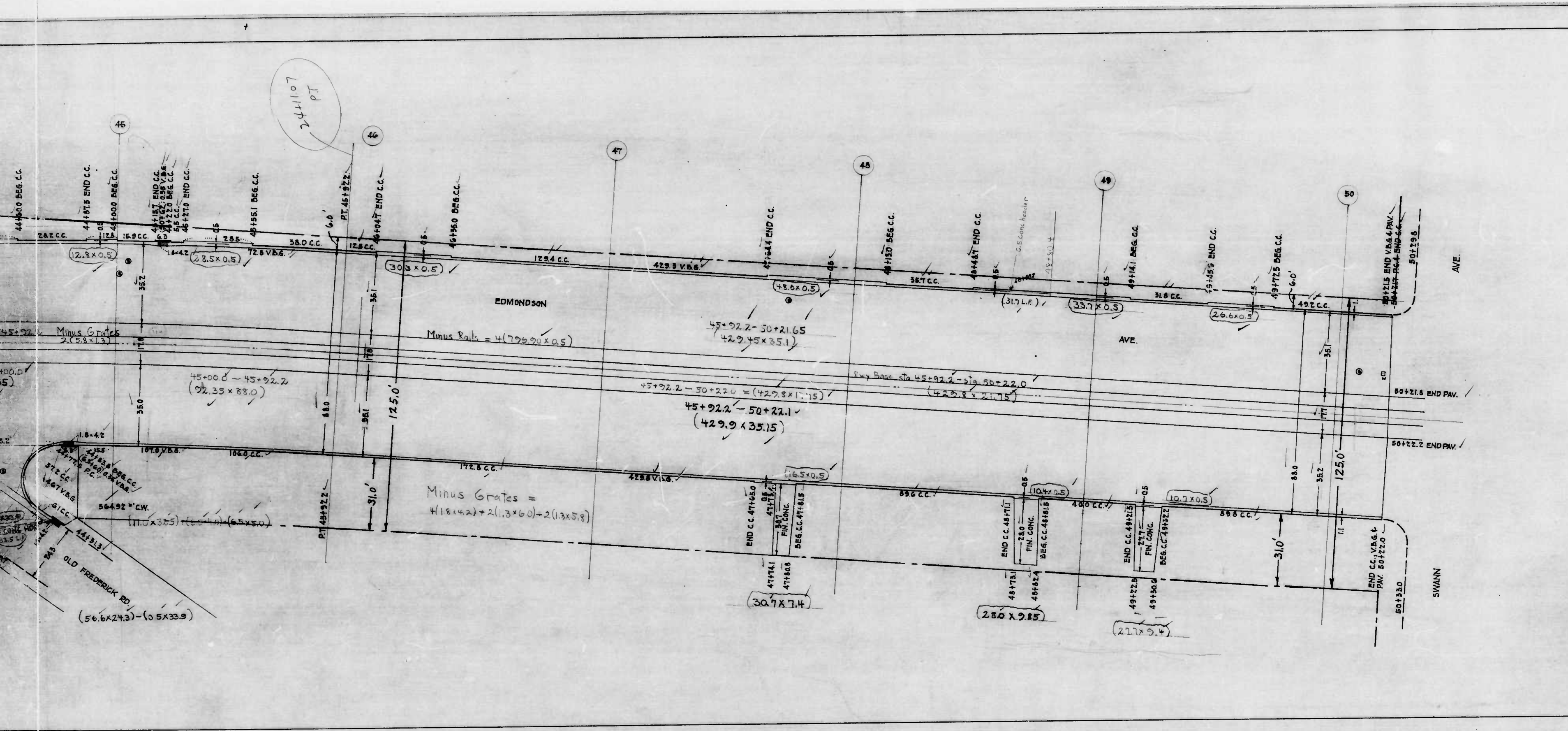
CORRECT  
*Wm. J. ...*  
ASSOCIATED ENGINEER

APPROVED  
*Geo. H. Carter*  
HIGHWAYS ENGINEER

APPROVED  
*Edward ...*  
ENGR. PLANS & SURVEYS

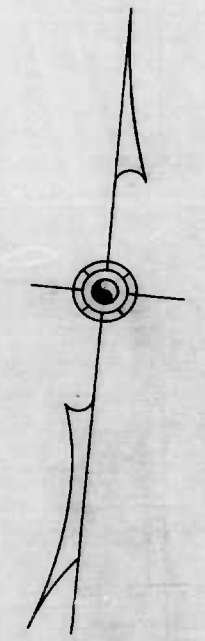
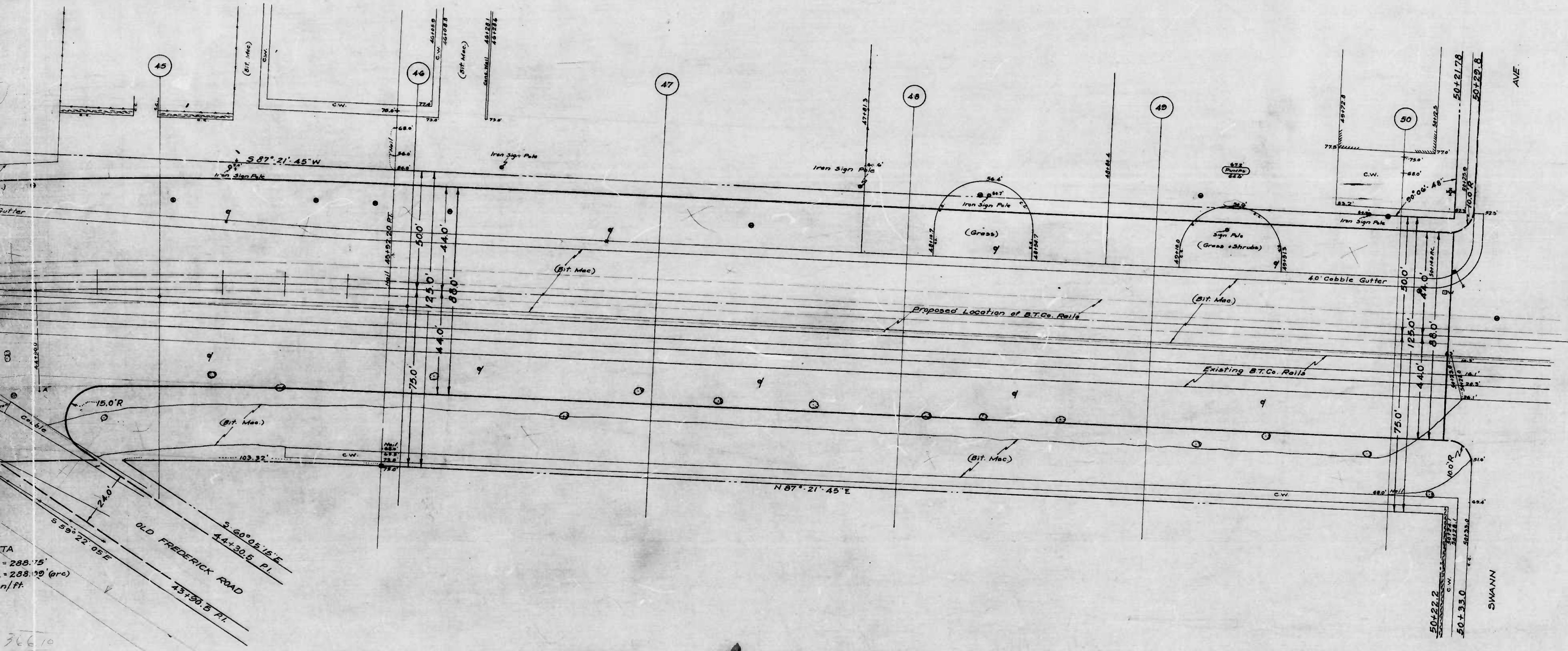
APPROVED  
*George Cobb*  
CHIEF ENGINEER





CITY OF BALTIMORE  
 DEPARTMENT OF PUBLIC WORKS  
 BUREAU OF HIGHWAYS  
 CONT. NO. 765  
 EDMONDSON AVE.-WINANS WAY TO SWANN AVE.  
 5H. ASP. PAV.-1 1/2" WEARING SURF.-1 1/2" BINDER ON AN 8"  
 CONC. BASE VERT. FIBRE VIT. BR. GUT. 11" WIDE  
 BALTO. ASP. BLK. TITLE CO. CONTRACTOR  
 STARTED 4-8-43 COMP. 6-15-43  
 SCALE 1" = 20.0' DATE 9-16-43





CITY OF BALTIMORE  
DEPARTMENT OF PUBLIC WORKS  
BUREAU OF HIGHWAYS

PLAN OF  
EDMONDSON AVE - SWANN AVE - WINANS WAY  
SCALE: 1" = 20.0'  
CONT. N<sup>o</sup> 765  
CORRECT

*Edmondson*  
ASSOCIATE ENGINEER  
APPROVED

*George F. Carter*  
HIGHWAYS ENGINEER  
APPROVED

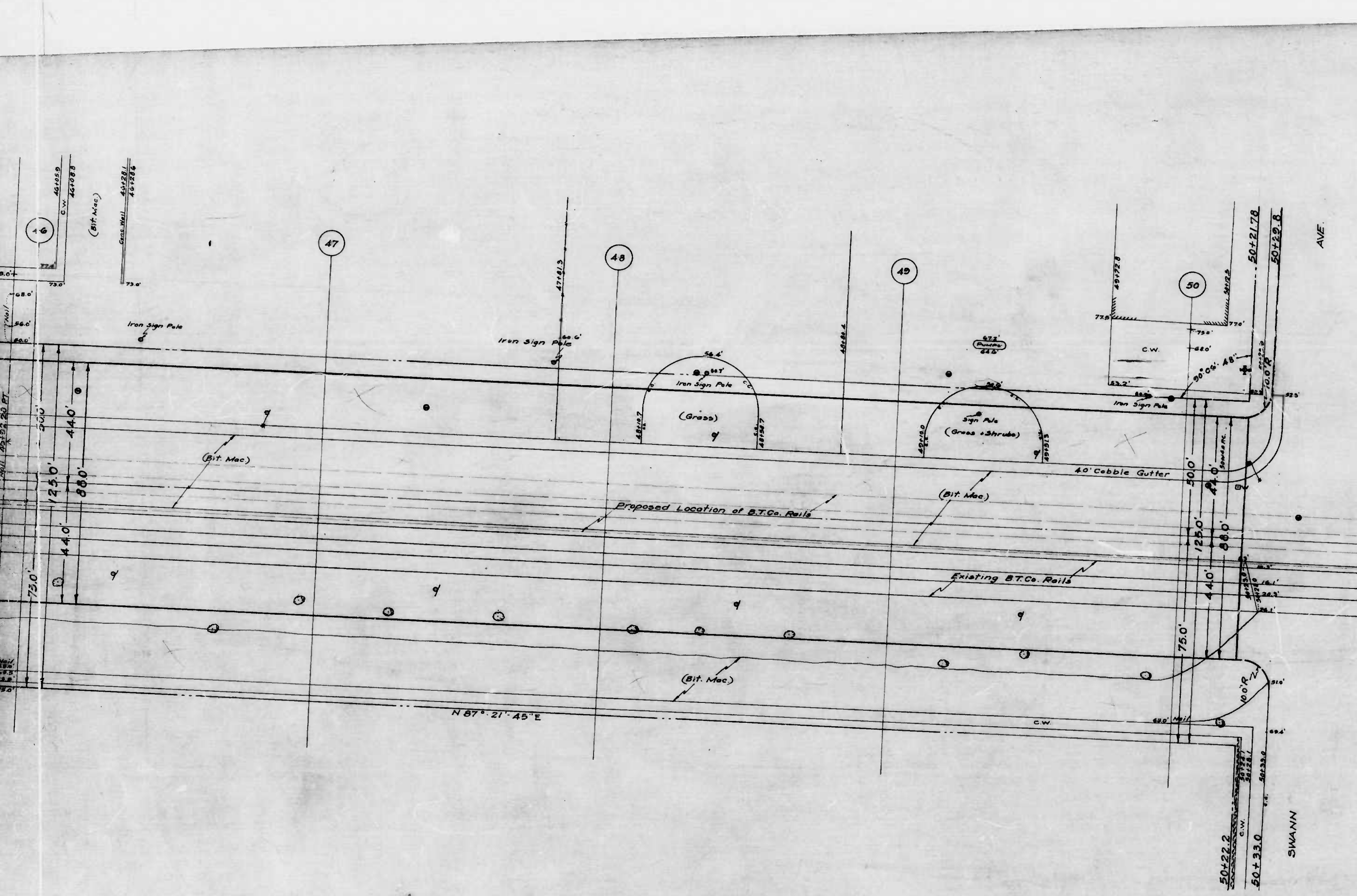
*Edward H. Johnson*  
ENGR. PLANS & SURVEYS

*George Collier*  
CHIEF ENGINEER

Sheet 2

TA  
= 288.15'  
= 288.10' (arc)  
n/ft





CITY OF BALTIMORE  
 DEPARTMENT OF PUBLIC WORKS  
 BUREAU OF HIGHWAYS  
 PLAN OF  
 EDMONDSON AVE. - SWANN AVE. - WINANS WAY  
 SCALE: 1" = 20.0'  
 CONT. N<sup>o</sup> 765  
 CORRECT

*Edmondson*  
 ASSOCIATE ENGINEER  
 APPROVED

*Geo. J. Carter*  
 HIGHWAYS ENGINEER  
 APPROVED

*Edmondson*  
 ENGR. PLANS & SURVEYS

*George Collier*  
 CHIEF ENGINEER

Sheet 3