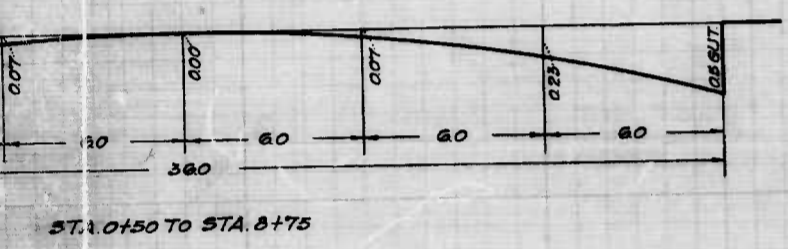
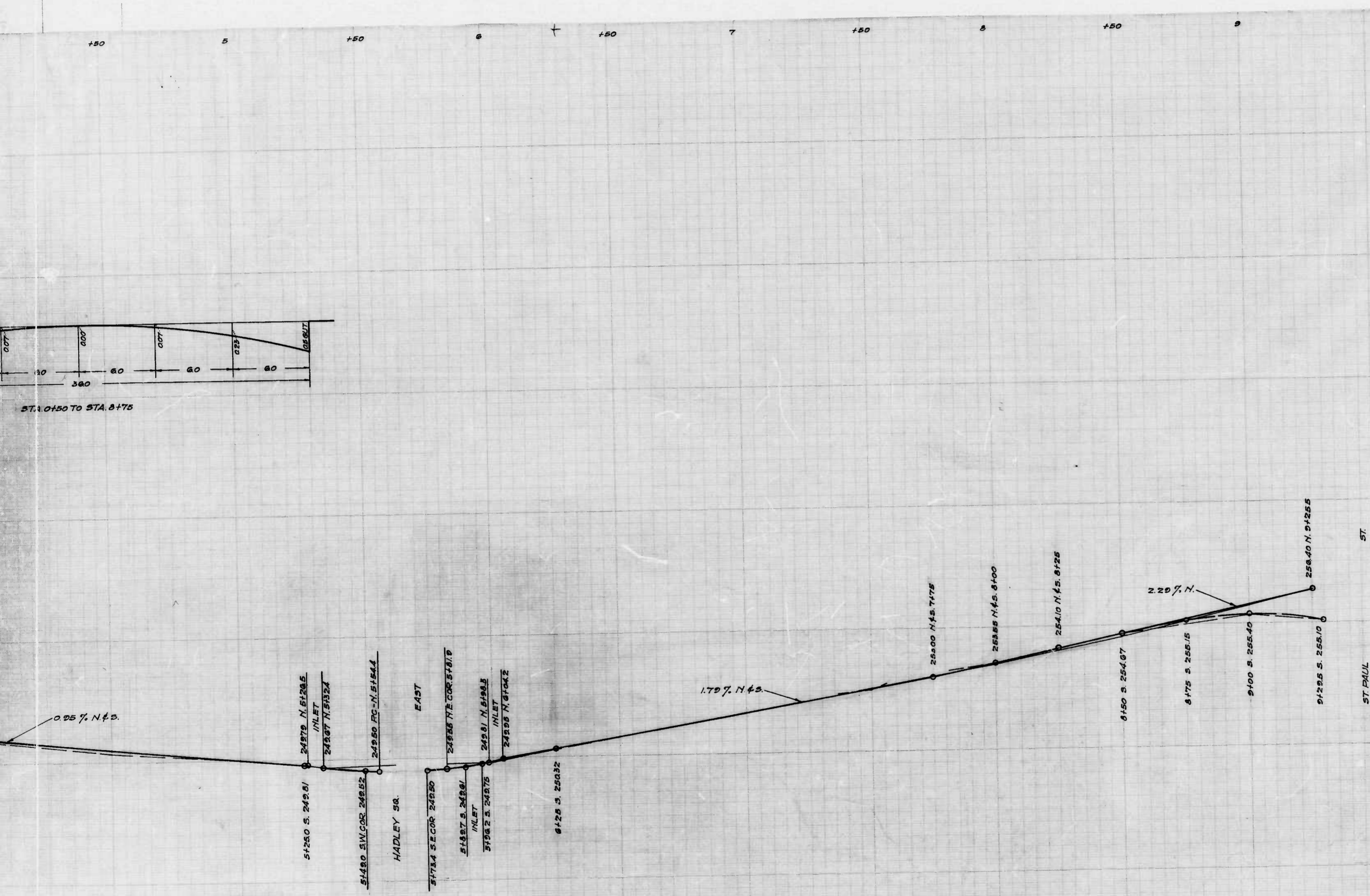


CITY OF BALTIMORE
 DEPARTMENT OF PUBLIC WORKS
 BUREAU OF HIGHWAYS
 LAYOUT OF
 THIRTY-NINTH ST-CHARLES ST. TO ST. PAUL ST.
 CONT. NO. 761
 SCALE - 1" = 200' APRIL 28, 1942
 BOOK 170 X-166

CORRECTED APPROVED APPROVED APPROVED
Ed. J. Giffney *James M. ...* *Geo. P. Carter* *Anna Colby*
 ASSOCIATE ENGINEER ENGR-PLANS & SURVEYS HIGHWAYS ENGINEER CHIEF ENGINEER

1 shot

2 shot



CITY OF BALTIMORE
 DEPARTMENT OF PUBLIC WORKS
 BUREAU OF HIGHWAYS
 ESTABLISHED GRADE OF
 THIRTY NINTH ST.-CHARLES ST. TO ST. PAUL ST.
 CONT. NO. 761

APRIL 30, 1942
 BOOK NO. X-105

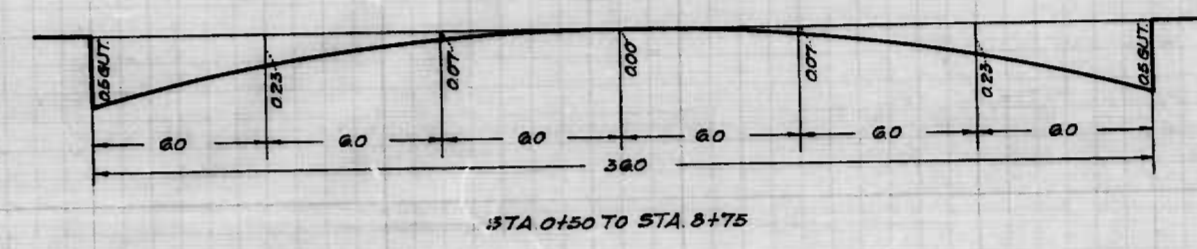
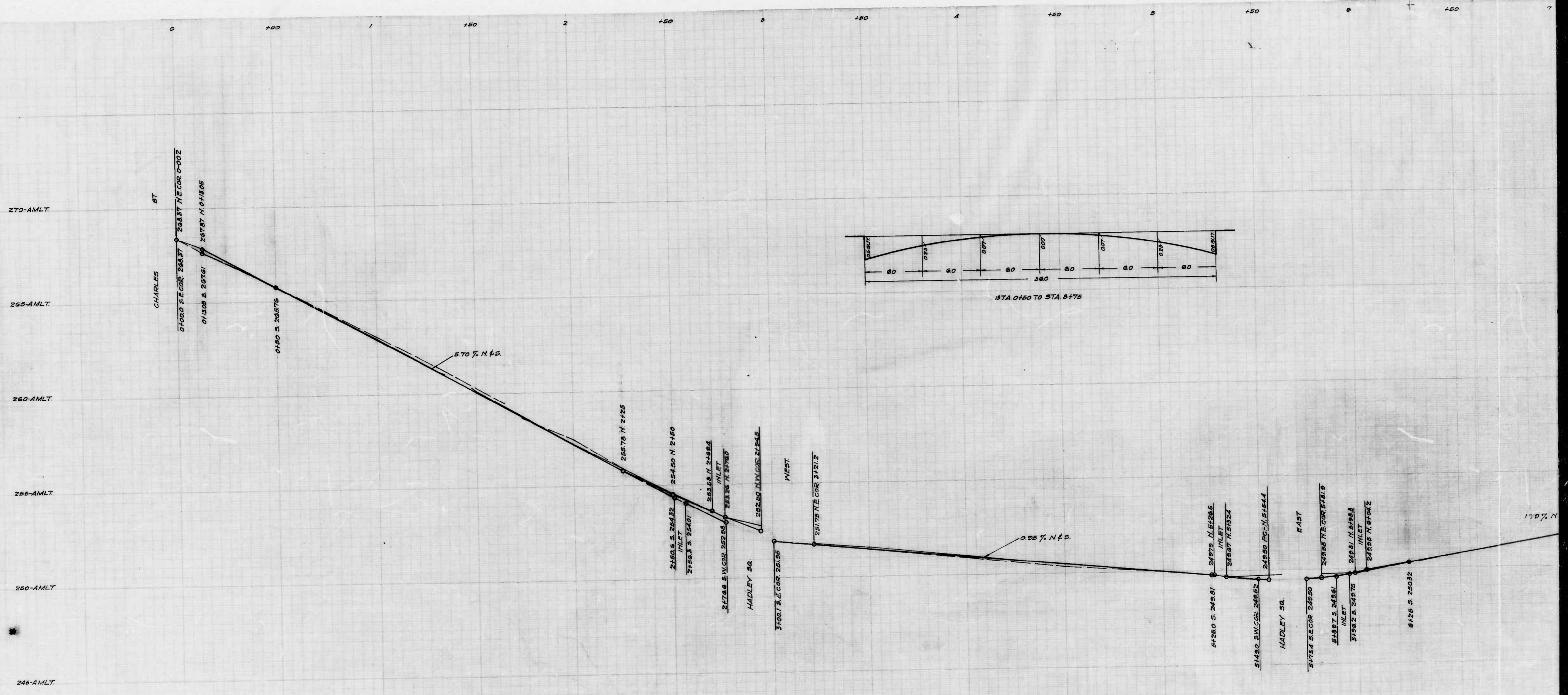
APPROVED: *[Signature]*
 ENGR.-PLANS & SURVEYS

APPROVED: *[Signature]*
 CHIEF ENGINEER

APPROVED: *[Signature]*
 HIGHWAYS ENGINEER

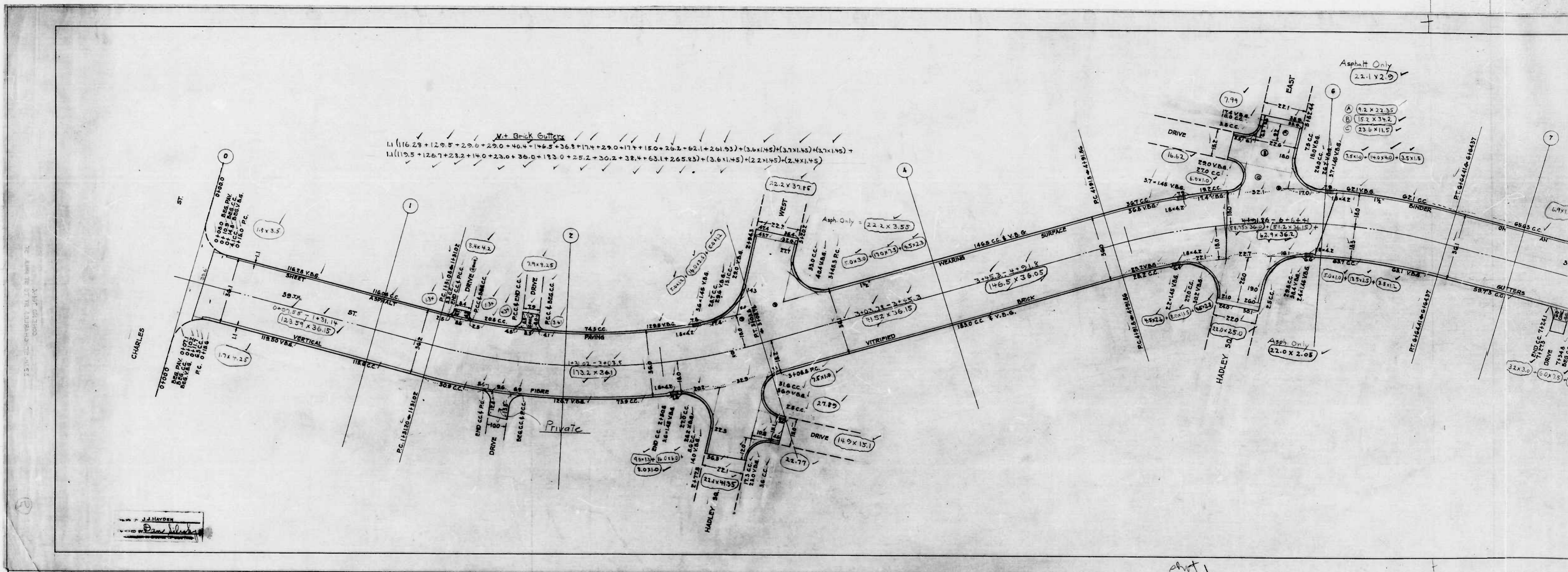
1 shot

3 shots



DRAWN BY V. J. HAYDEN
 ENGINEER BY H. J. [Signature]
 ENGINEER IN CHARGE OF DEPT.

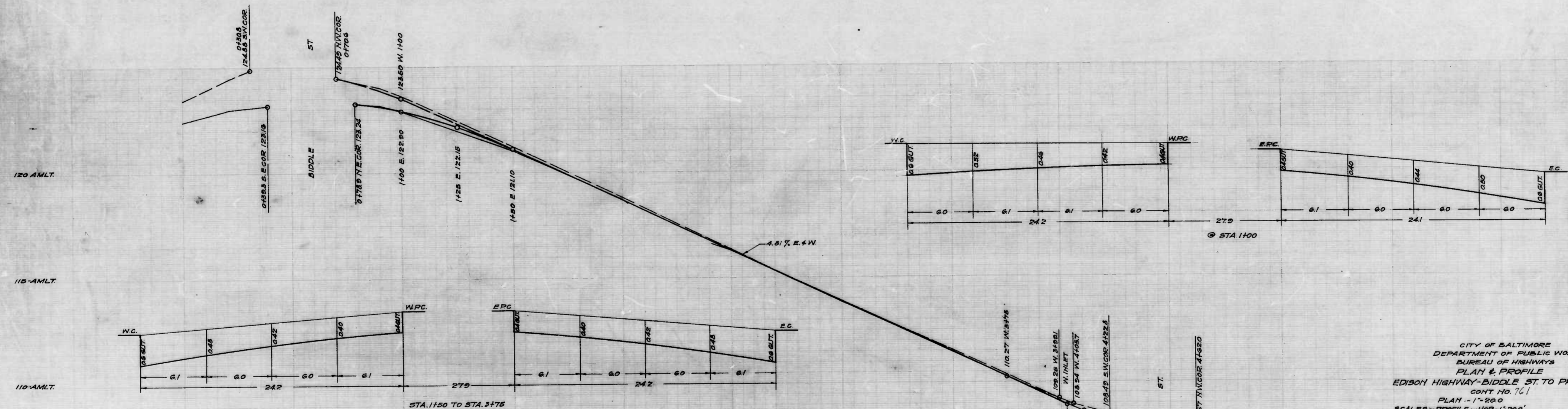
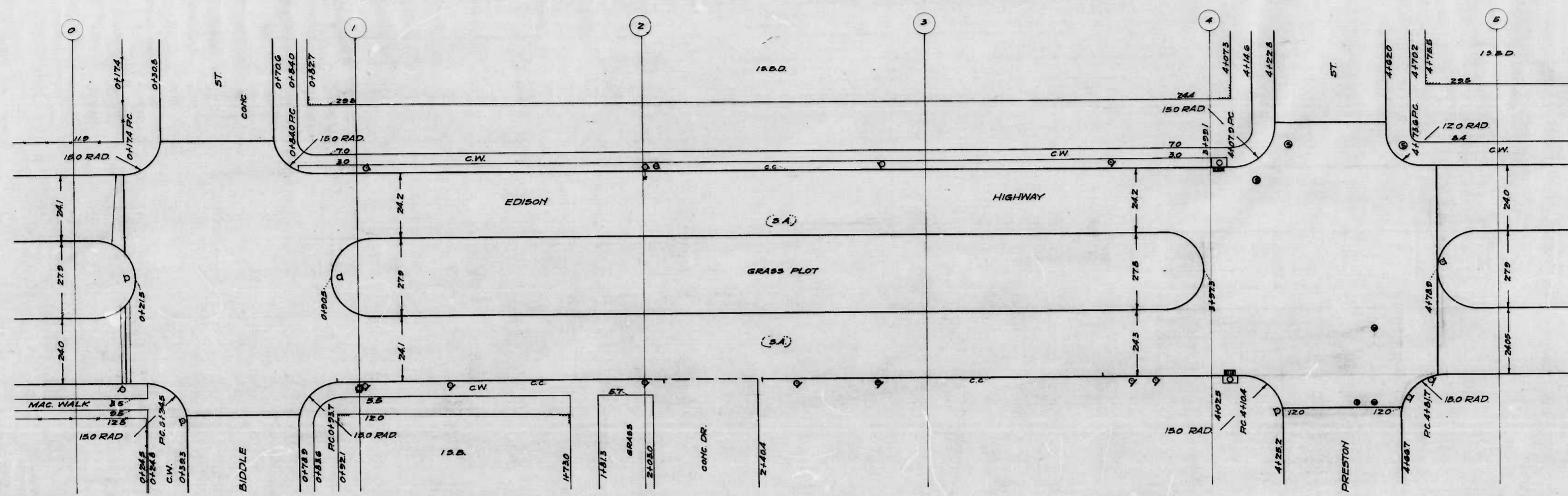
1.25



Y+ Brick Gutters
1.1 (116.29 + 129.5 + 29.0 + 40.4 + 146.5 + 36.3 + 17.4 + 29.0 + 17.4 + 15.0 + 26.2 + 62.1 + 261.93) + (3.6 x 145) + (3.7 x 145) +
1.1 (119.5 + 126.7 + 28.2 + 14.0 + 23.0 + 36.0 + 133.0 + 25.2 + 30.2 + 38.4 + 63.1 + 265.83) + (3.6 x 145) + (2.4 x 145)

J. J. HAYDEN
Dan S. [Signature]

phot 1



DRAWN BY J. L. LAYTON
 CHECKED BY *[Signature]*
 ENGINEER IN CHARGE OF DIST. NO.

CITY OF BALTIMORE
 DEPARTMENT OF PUBLIC WORKS
 BUREAU OF HIGHWAYS
 EDISON HIGHWAY - BIDDLE ST. TO PRESTON ST.
 PLAN & PROFILE
 CONT. NO. 761
 PLAN - 1"=200'
 SCALES - PROFILE - HOR. - 1"=200'
 VER. - 1"=20'
 BOOK X-141
 CORRECTED BY *[Signature]* APPROVED BY *[Signature]*
 ASSOCIATE ENGINEER ENGR. PLANS & SURVEYS
 APPROVED BY *[Signature]* APPROVED BY *[Signature]*
 HIGHWAYS ENGINEER CHIEF ENGINEER

dot 1

