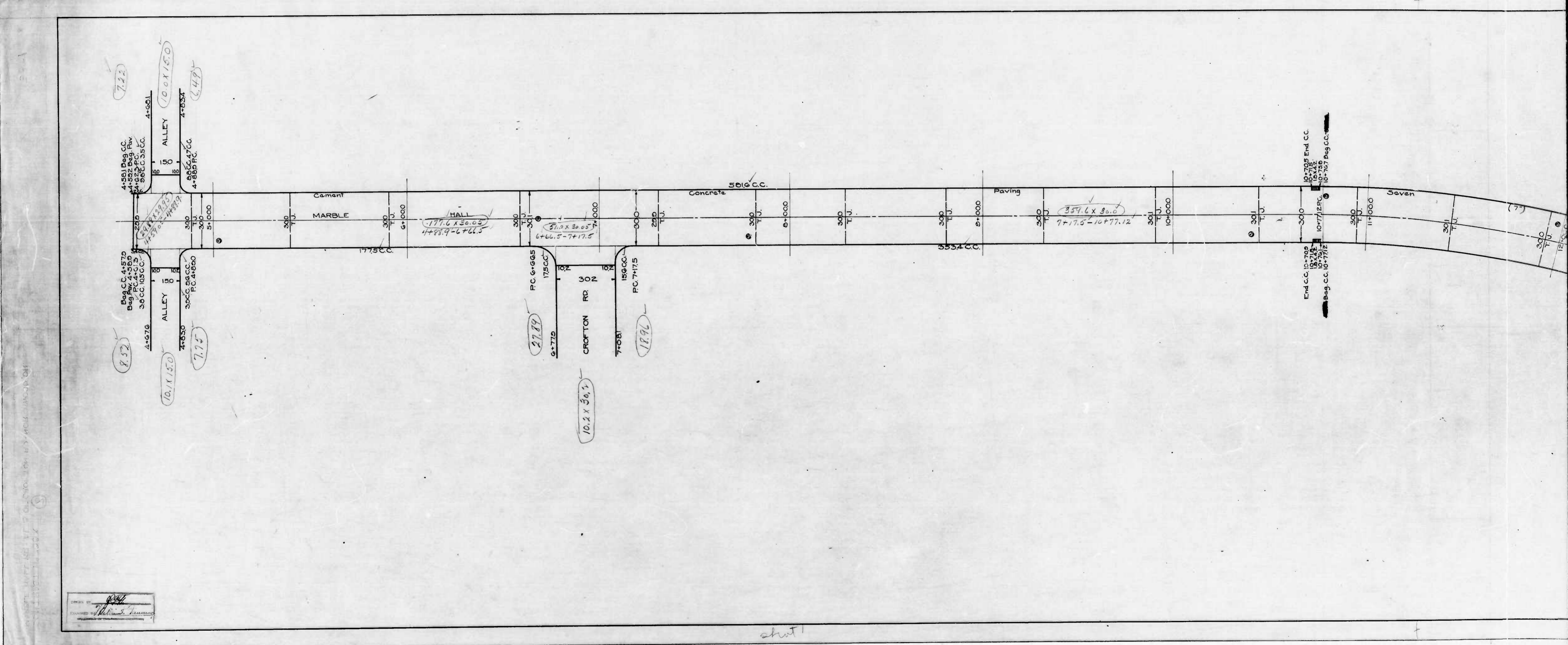


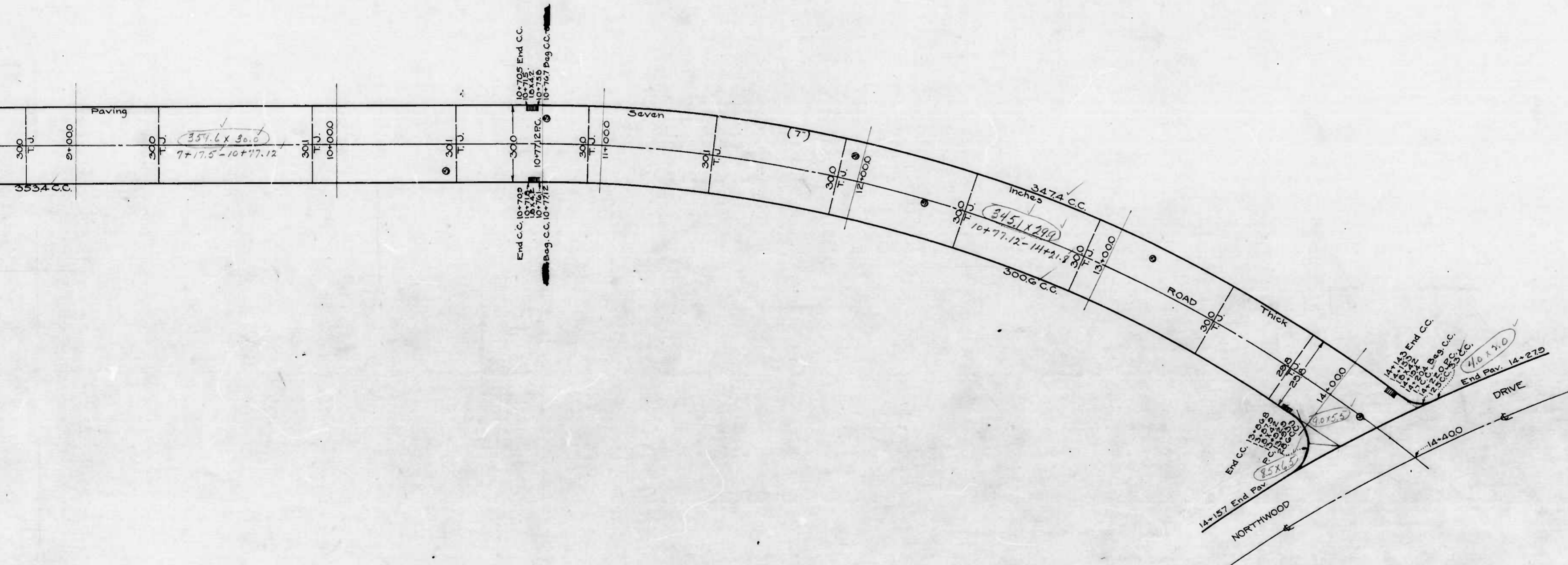
DRAWN BY A. Granger  
CHECKED BY [Signature]

Sheet 1





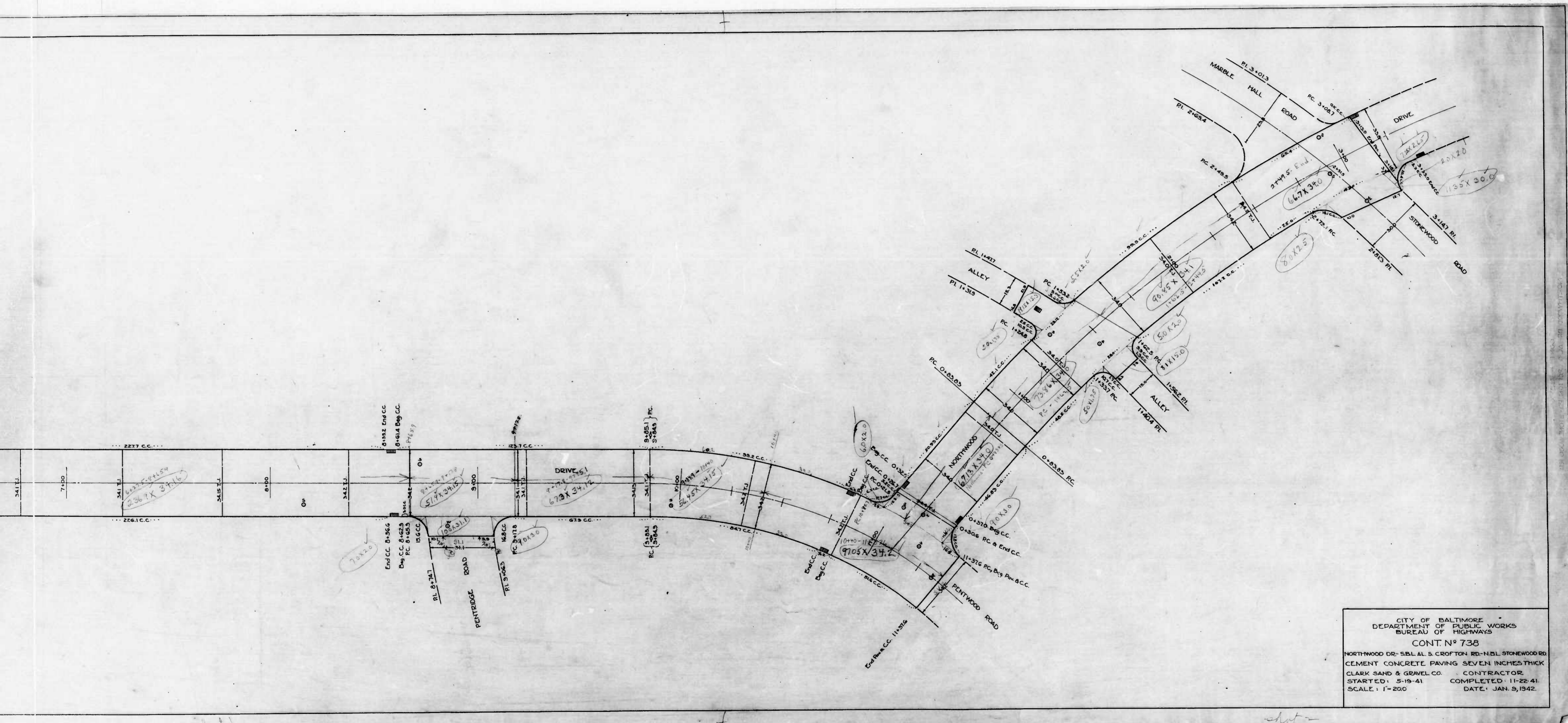
shut



CITY OF BALTIMORE  
 DEPARTMENT OF PUBLIC WORKS  
 BUREAU OF HIGHWAYS  
 CONTRACT N° 738  
 MARBLE HALL RD. - AL. S. OF GROFON RD. - NORTHWOOD DR.  
 Cement Concrete Paving Seven (7) inches Thick  
 CLARK SAND & GRAVEL CO. CONTRACTORS  
 STARTED 10-15-41 COMPLETED 11-10-41  
 SCALE 1"=200' JANUARY 9, 1942

sheet 2



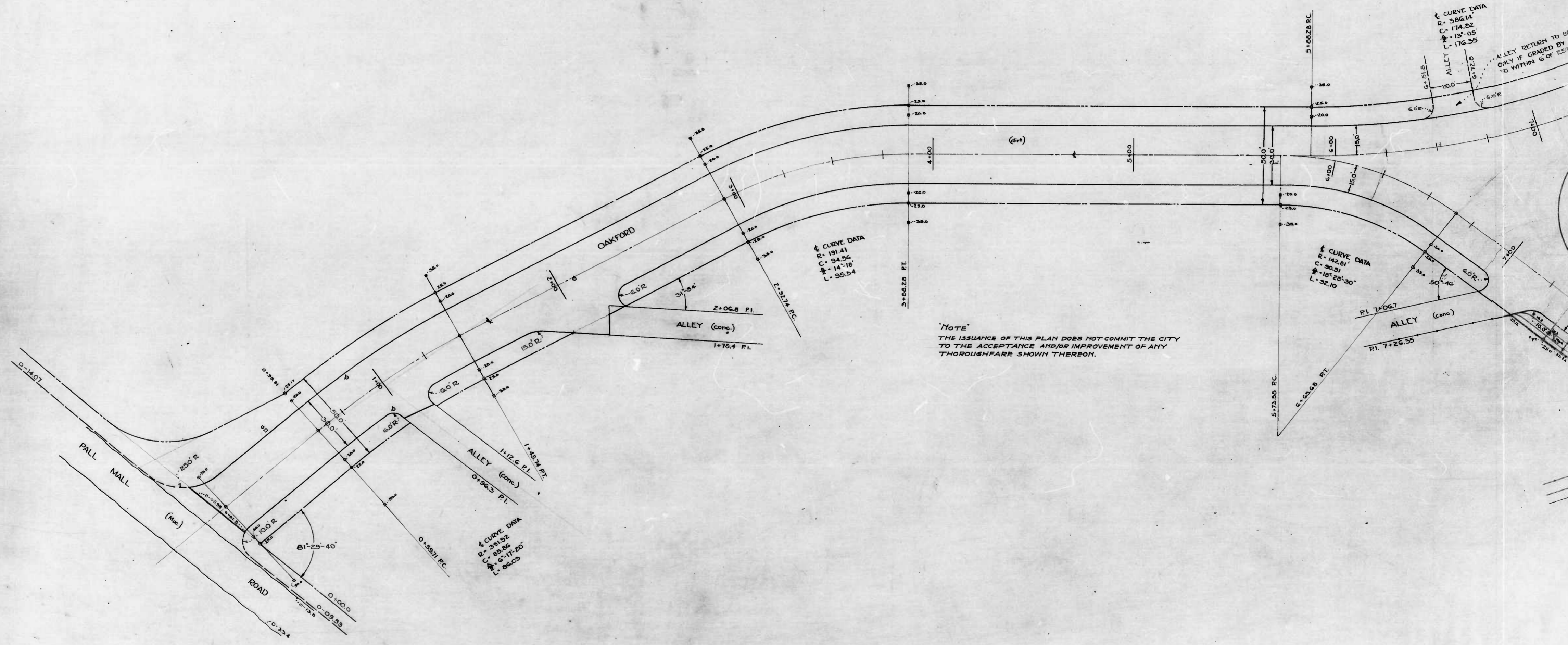


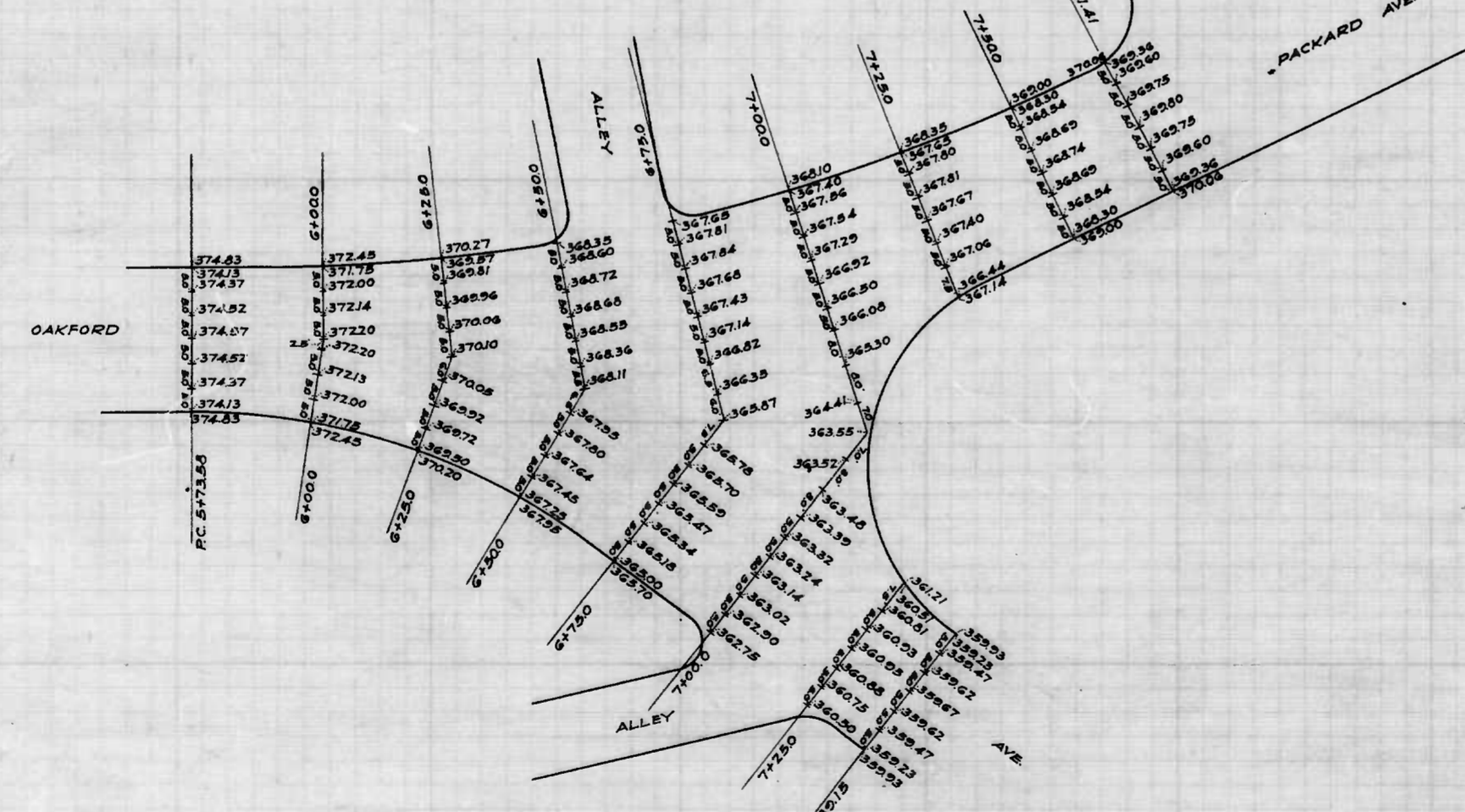
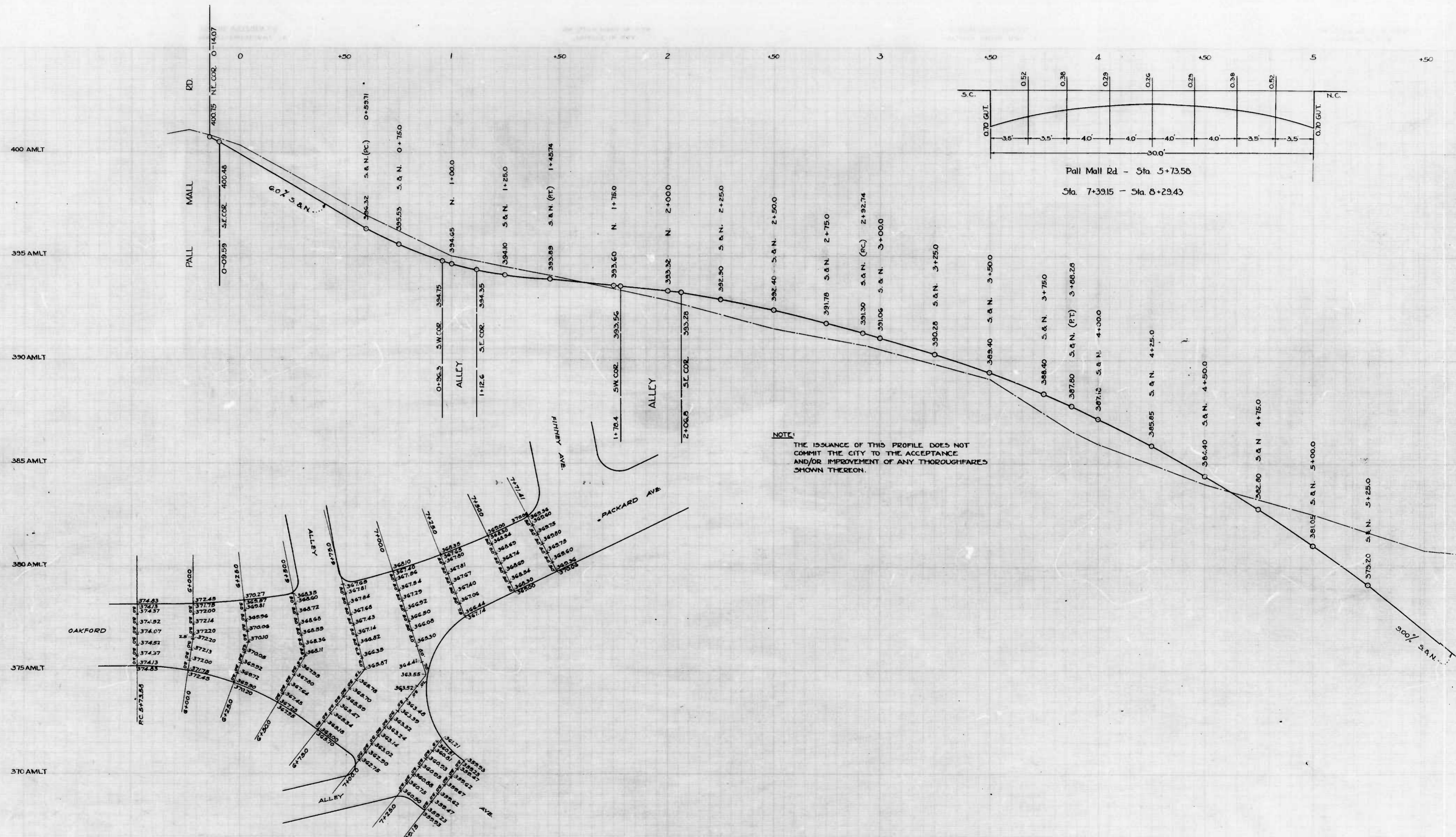
CITY OF BALTIMORE  
 DEPARTMENT OF PUBLIC WORKS  
 BUREAU OF HIGHWAYS  
 CONT. NO. 738  
 NORTHWOOD DR - SBL AL S. CROFTON RD - NBL STONEWOOD RD  
 CEMENT CONCRETE PAVING SEVEN INCHES THICK  
 CLARK SAND & GRAVEL CO. CONTRACTOR  
 STARTED: 5-19-41 COMPLETED: 11-22-41  
 SCALE: 1" = 200' DATE: JAN. 9, 1942.

	11'S	10'S	10'S	E	10' N	10.0' N	
5+70.58	374.8	374.37	374.50	374.59	374.57	374.37	
			9 1/4				
6+00	371.85	372.06	372.16	372.20	372.14	372.00	
6+25	369.95	370.07	370.10	370.06	369.96	369.81	
6+50	368.13	368.36	368.55	368.66	368.72	368.60	
6+75	366.82	367.14	367.43	367.68	367.84	367.81	
7+00	366.08	366.50	366.92	367.29	367.54	367.56	
7+25	366.66	367.06	367.40	367.67	367.81	367.80	
7+50	368.30	368.54	368.69	368.74	368.61	368.54	
			5 1/2				
	11'S	10'S	10'S	E	10' N	10.0' N	11'S
5+70.58	374.8	374.37	374.50	374.59	374.57	374.37	374.13
6+00		372.00	372.13	372.20	372.18	372.06	371.87
6+25		369.72	369.92	370.05	370.10	370.07	369.98
6+50		367.45	367.64	367.80	367.95	368.08	368.22
6+75		365.18	365.34	365.47	365.59	365.70	365.78
7+00		362.90	363.02	363.14	363.24	363.32	363.39
7+25		360.75	360.88	360.95	360.93	360.81	360.62
7+39.15		359.47	359.64	359.67	359.64	359.47	359.22
				9 1/2			



	15'S	10'S	5'S	±	50' N	100' N	
5+70.58	374.13	374.37	374.50	374.59	374.64	374.57	
				9% up			
6+00	371.85	372.06	372.18	372.20	372.14	372.00	
6+25	368.96	370.07	370.10	370.06	369.96	369.81	
6+50	368.13	368.36	368.55	368.68	368.72	368.60	
6+75	366.82	367.14	367.43	367.68	367.84	367.91	
7+00	366.08	366.50	366.92	367.29	367.54	367.56	
7+25	366.66	367.08	367.40	367.67	367.81	367.80	
7+50	368.30	368.54	368.69	368.74	368.61	368.54	
				5% up			
	15'S	10'S	5'S	±	50' N	100' N	15' N
5+73.58	374.13	374.37	374.50	374.59	374.64	374.57	374.13
6+00.0		372.00	372.13	372.20	372.18	372.06	371.87
6+25		368.72	368.92	370.05	370.10	370.07	369.98
6+50		367.45	367.64	367.80	367.95	368.08	368.28
6+75		365.18	365.34	365.47	365.59	365.70	365.78
7+00		362.90	363.02	363.14	363.24	363.32	363.39
7+25		360.75	360.88	360.95	360.99	360.97	360.62
7+39.6		359.47	359.62	359.67	359.62	359.47	359.23
				9%			

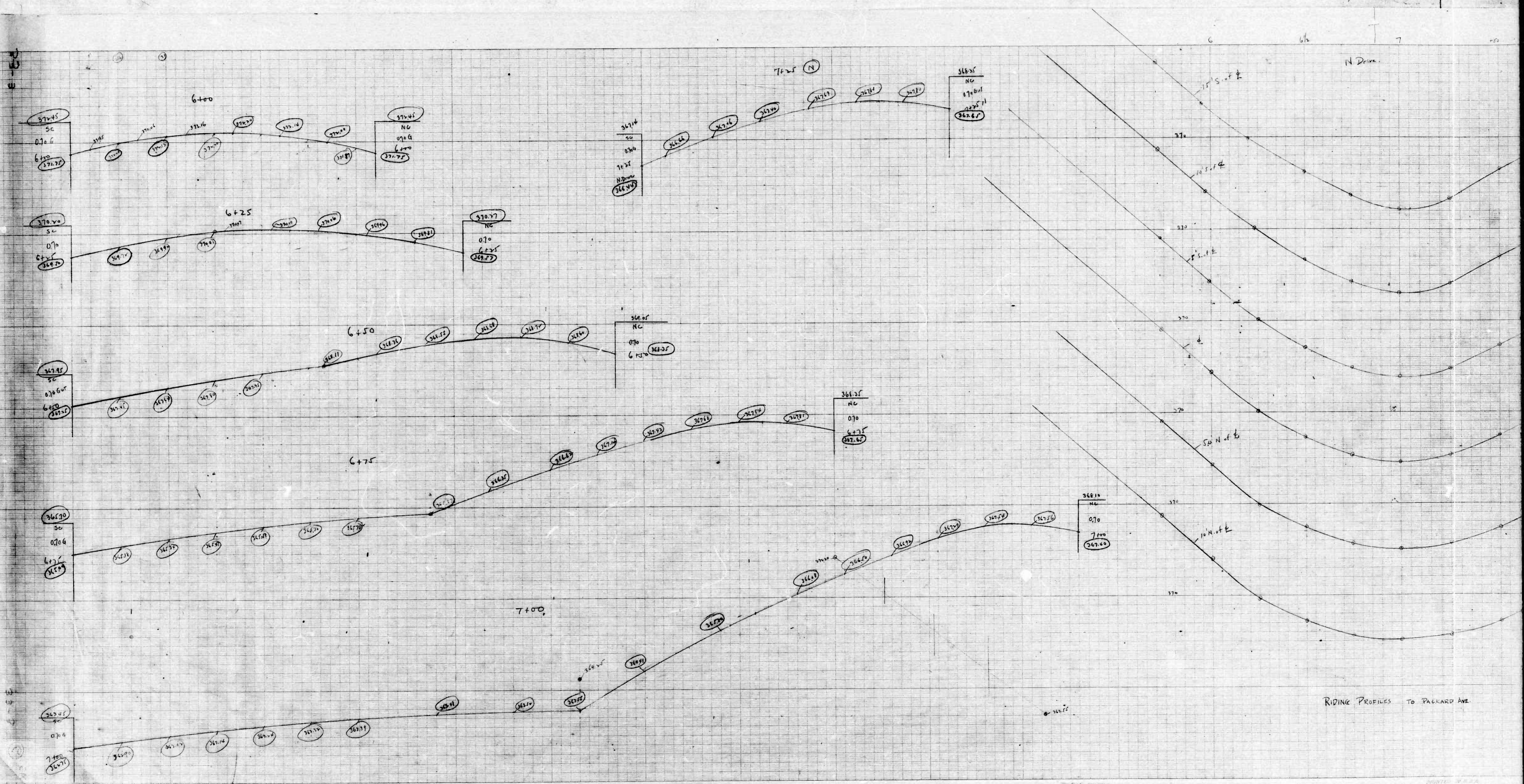




DRAWN BY A. Gronert  
 EXAMINED BY *H. H. H. H.*  
 ENGINEER IN CHARGE

slot 1

5+73.58 (F.C.) S. 374.83  
5+73.58 (F.C.) S. 374.83



PROFILE PROFILE  
PLATE A  
ENGINE DISTRICT

PRINTED IN U.S.A.  
ON 100% RECYCLED PAPER MADE IN U.S.A.

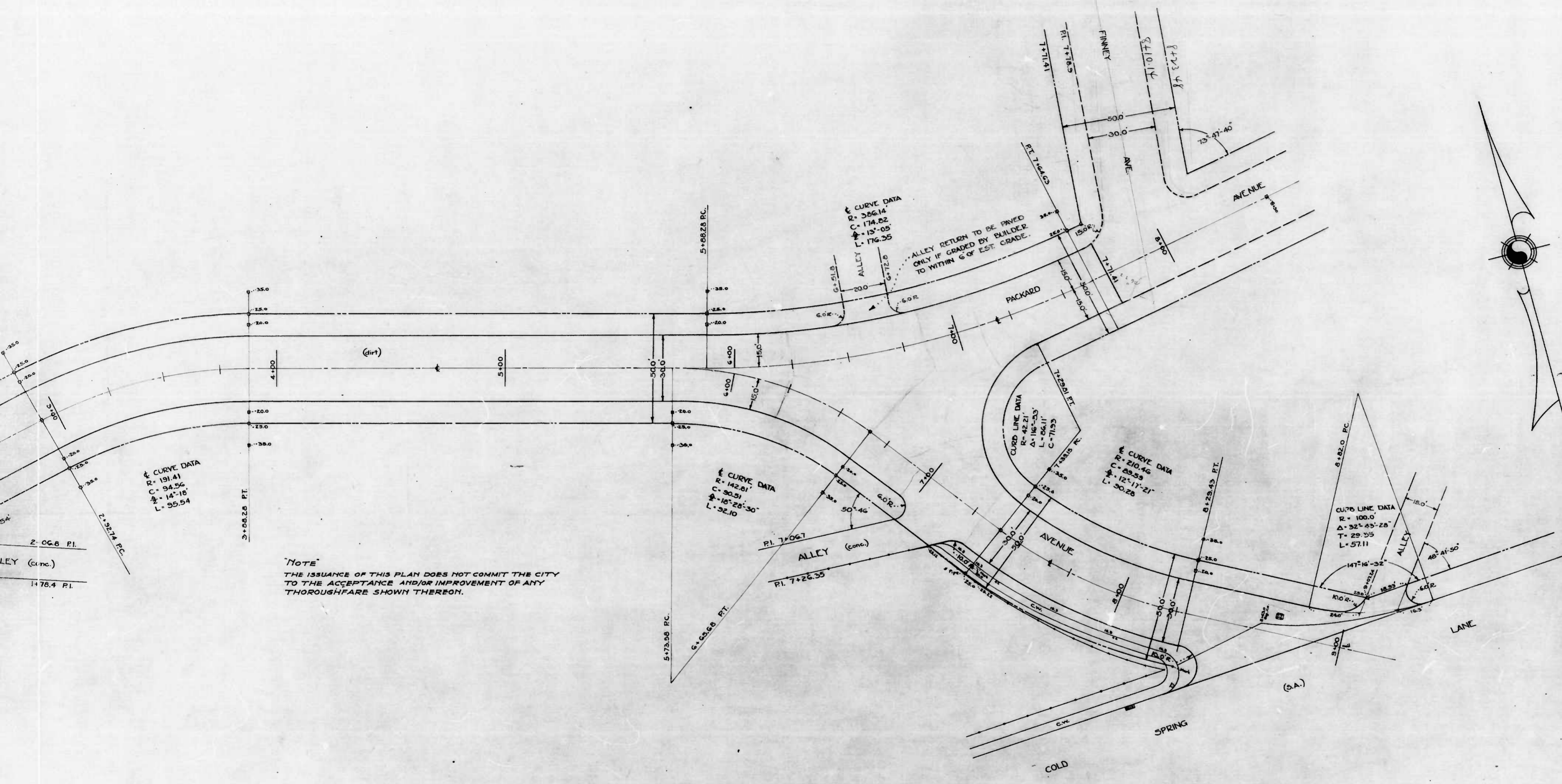
PROFILE PROFILE  
PLATE A  
ENGINE DISTRICT

PRINTED IN U.S.A.  
ON 100% RECYCLED PAPER MADE IN U.S.A.

shot 1

RIDING PROFILES TO PACKARD AVE





NOTE  
 THE ISSUANCE OF THIS PLAN DOES NOT COMMIT THE CITY  
 TO THE ACCEPTANCE AND/OR IMPROVEMENT OF ANY  
 THOROUGHFARE SHOWN THEREON.

CITY OF BALTIMORE  
 DEPARTMENT OF PUBLIC WORKS  
 BUREAU OF HIGHWAYS  
 LAY-OUT OF  
 OAKFORD AVE. - PALL MALL RD. - COLD SPRING LANE  
 CONT. N<sup>o</sup>. 738 APRIL 25, 1941  
 SCALE: 1"=20.0' BOOK N<sup>o</sup>. X-141

APPROVED: *George Cold* CHIEF ENGINEER  
 APPROVED: *Edward H. ...* ENGR. PLANS & SURVEYS  
 CORRECT: *...* ASSOCIATE ENGINEER  
 APPROVED: *...* HIGHWAYS ENGINEER

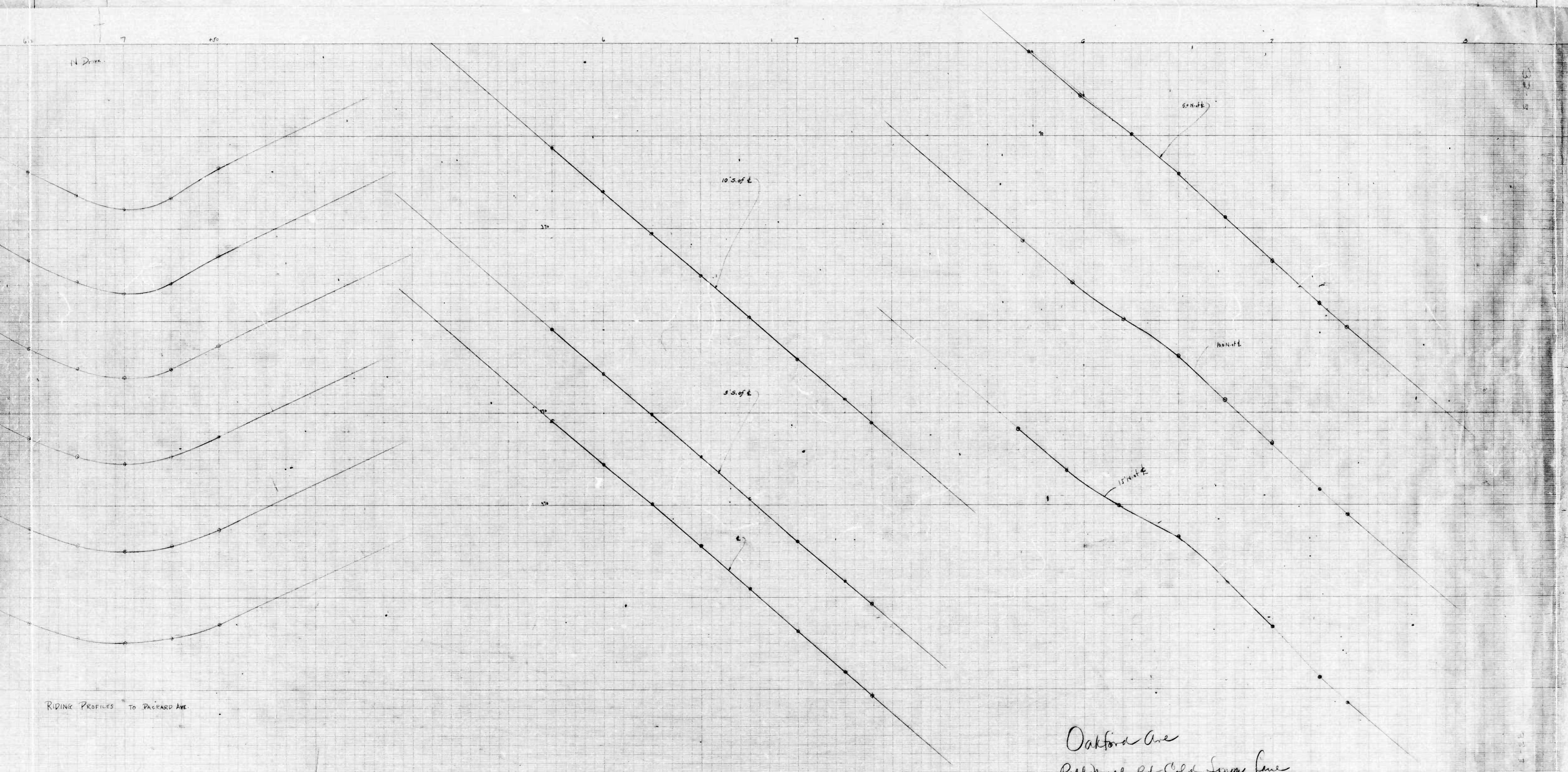
shot

shot



738

RATIO - 24 No. 6



RIDING PROFILES TO RICHARD AVE

Oakford Ave  
Pell Mill Rd - Old Spring Lane

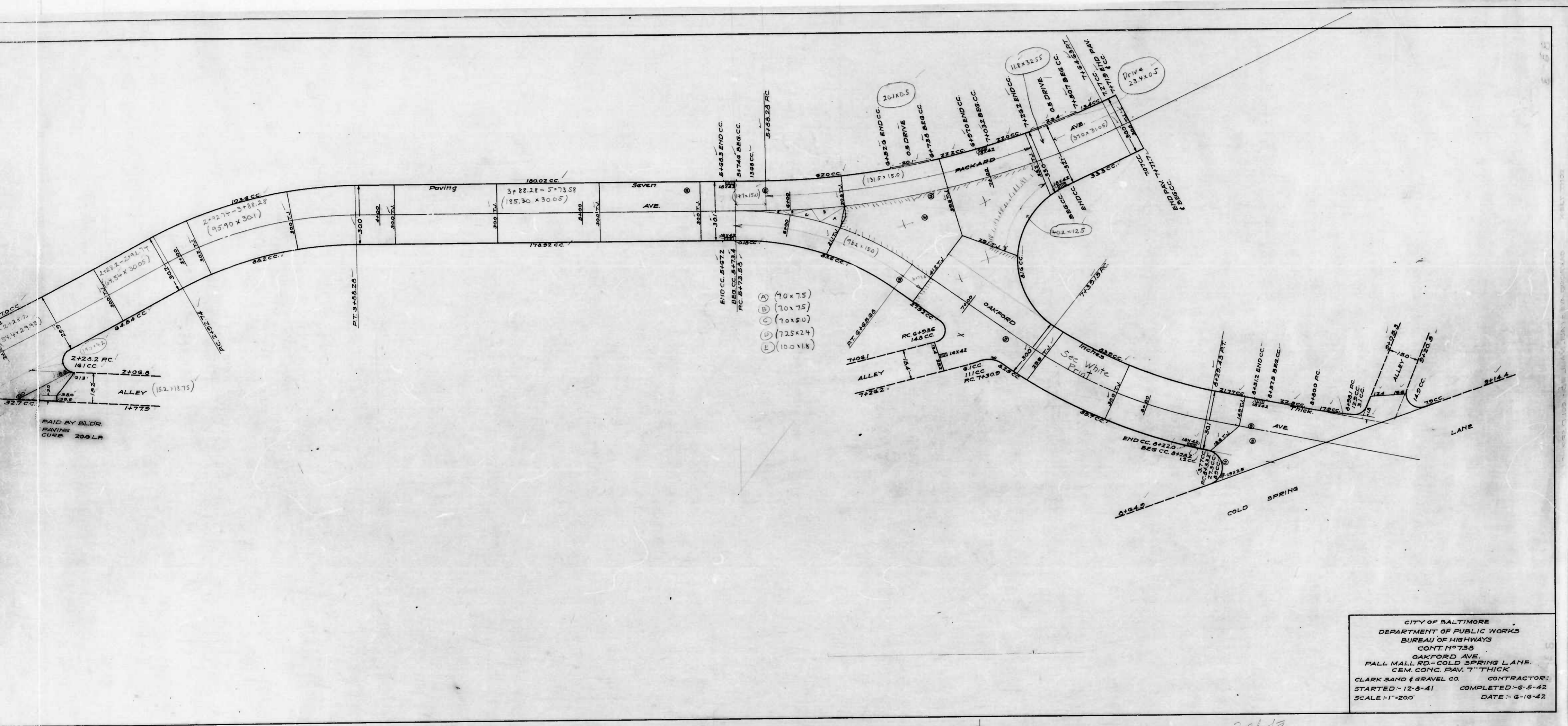
shot 2

TRAFFIC PROFILE  
PLATE A  
EUGENE DETTGEN & CO.

PRINTED IN U.S.A.  
ON 100% RAG PAPER MADE IN U.S.A.

TRAFFIC PROFILE  
PLATE A  
EUGENE DETTGEN & CO.





- (A) 7.0 x 7.5
- (B) 7.0 x 7.5
- (C) 7.0 x 5.0
- (D) 7.25 x 2.4
- (E) 10.0 x 1.8

PAID BY BLDR  
PAVING  
CURB 200 LB

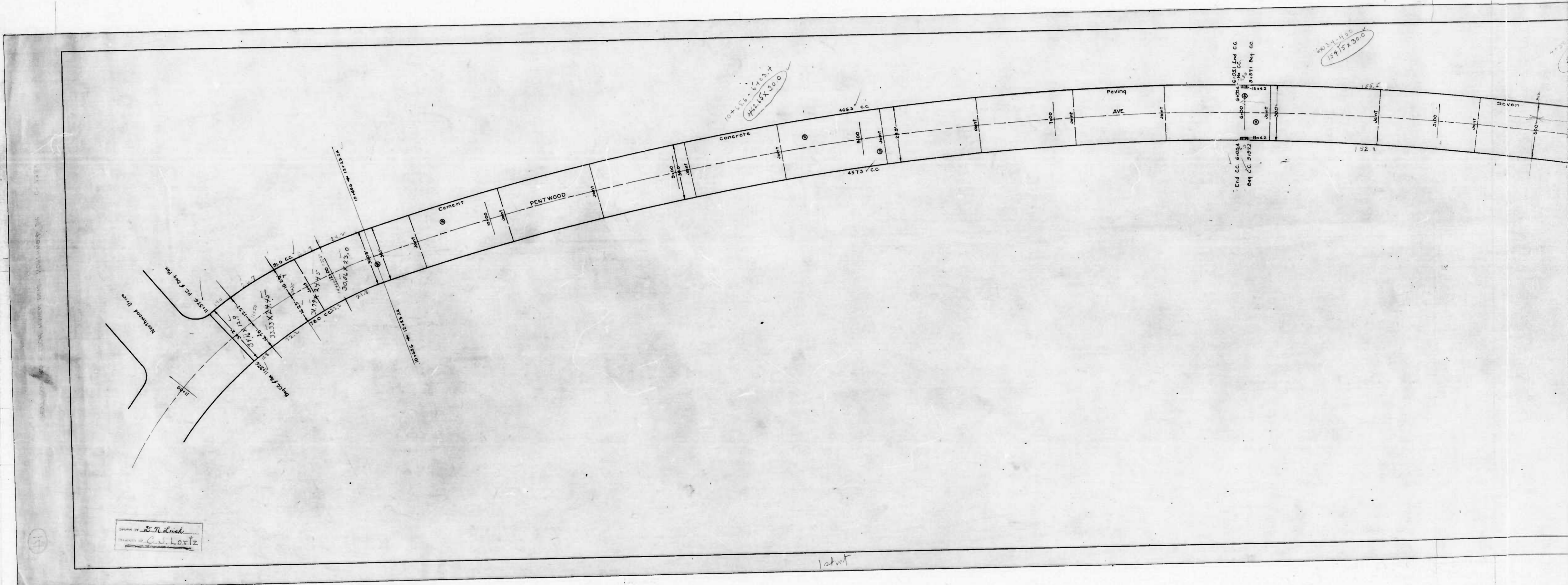
CITY OF BALTIMORE  
DEPARTMENT OF PUBLIC WORKS  
BUREAU OF HIGHWAYS  
CONT. N° 738  
OAKFORD AVE.  
FALL MALL RD - COLD SPRING LANE.  
CEM. CONC. PAV. 7" THICK  
CLARK SAND & GRAVEL CO. CONTRACTOR:  
STARTED - 12-5-41 COMPLETED - 6-5-42  
SCALE - 1" = 200' DATE - 6-16-42

Latot

2 shits

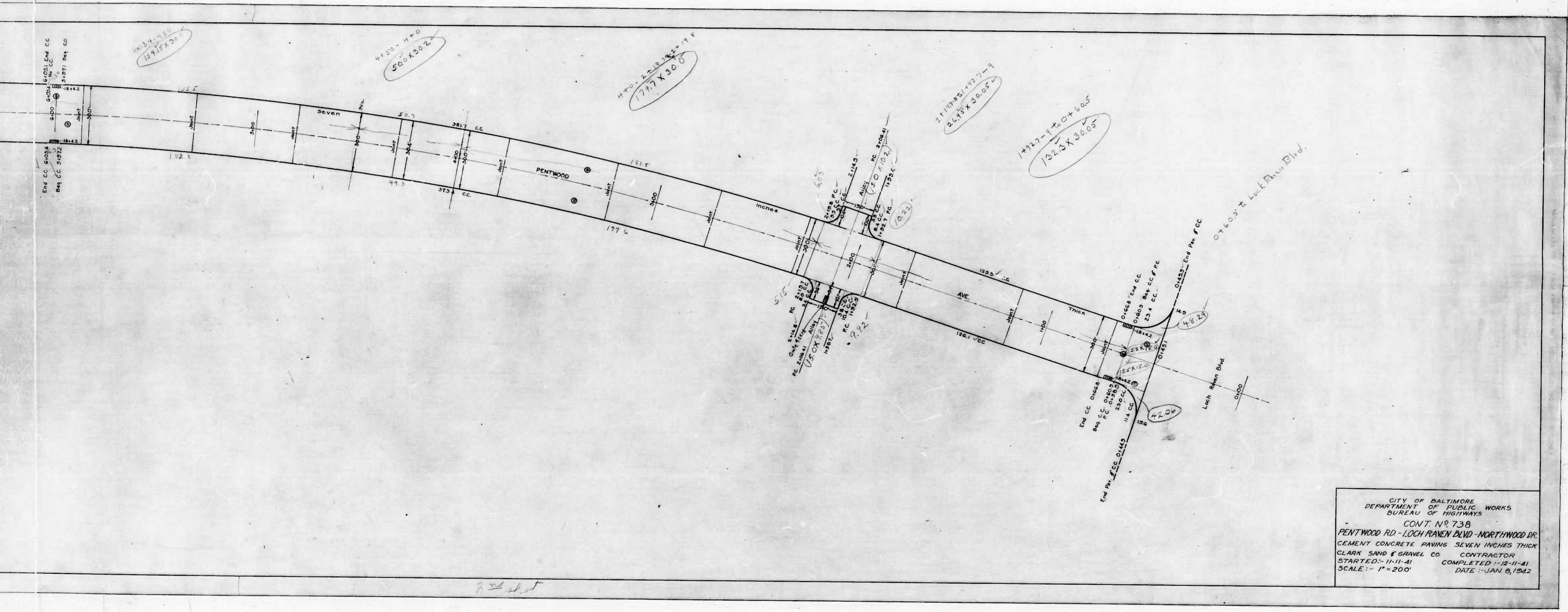
738

RATIO - 24 No. 14



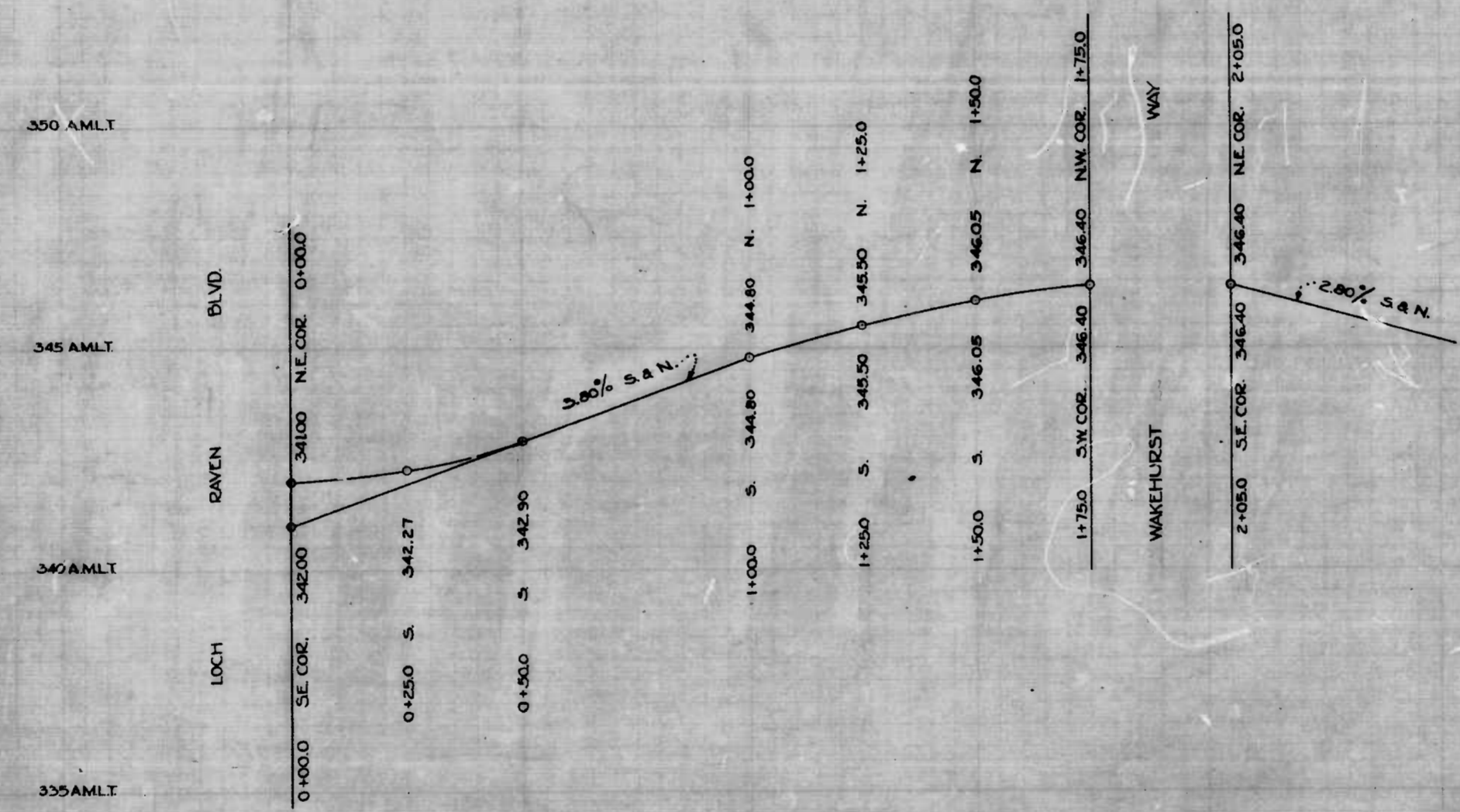
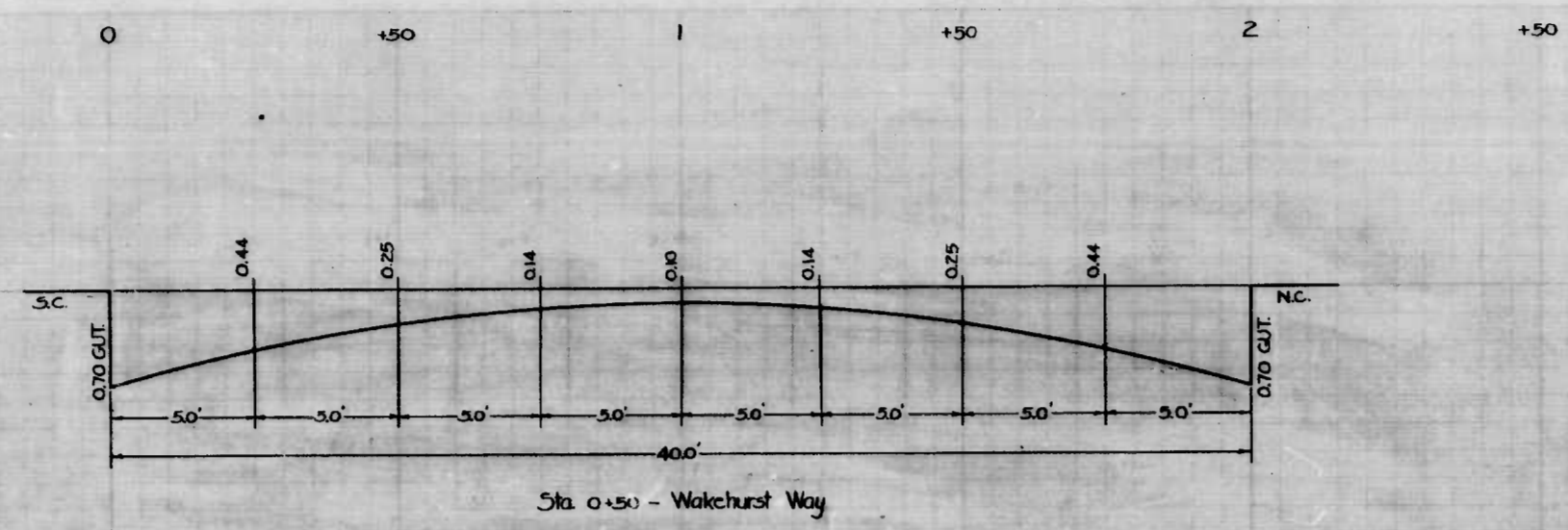
L. N. Lusk  
C. J. Lortz

1st wt



CITY OF BALTIMORE  
 DEPARTMENT OF PUBLIC WORKS  
 BUREAU OF HIGHWAYS  
 CONT. NO. 738  
 FENTWOOD RD. - LOCH RAVEN BLVD. - NORTHWOOD DR.  
 CEMENT CONCRETE PAVING SEVEN INCHES THICK  
 CLARK SAND & GRAVEL CO. CONTRACTOR  
 STARTED - 11-11-41 COMPLETED - 12-11-41  
 SCALE - 1" = 200' DATE - JAN 8, 1942

8th sheet



**NOTE**  
 THE ISSUANCE OF THIS PROFILE DOES NOT COMMIT THE CITY TO THE ACCEPTANCE AND/OR IMPROVEMENT OF ANY THOROUGHFARES SHOWN THEREON.

CITY OF BALTIMORE  
 DEPARTMENT OF PUBLIC WORKS  
 BUREAU OF HIGHWAYS  
 PROFILE OF  
 WADSWORTH WAY - LOCH RAVEN BLVD. - 100' ± E. WAKEHURST WAY  
 CONT. N° 735

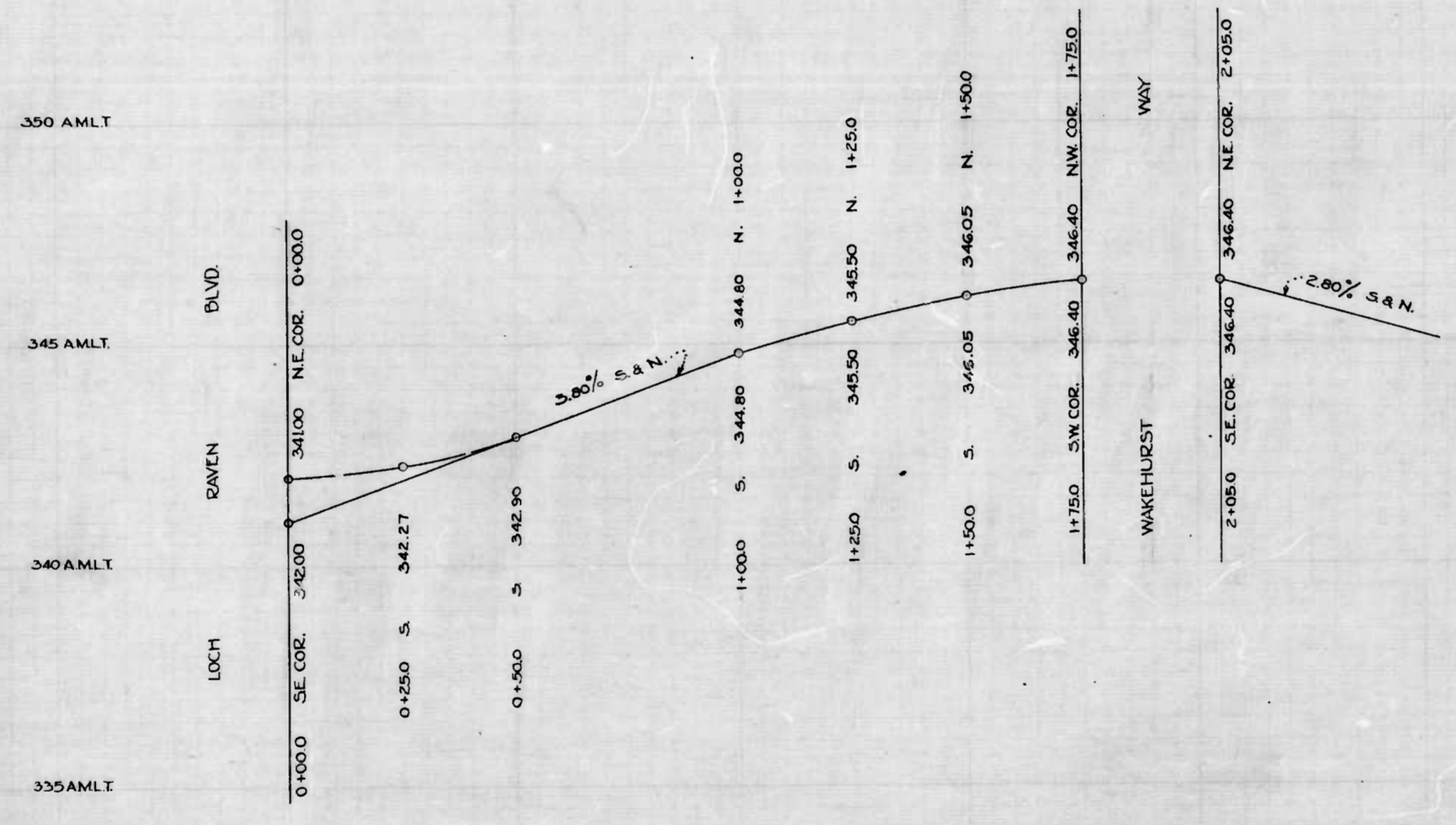
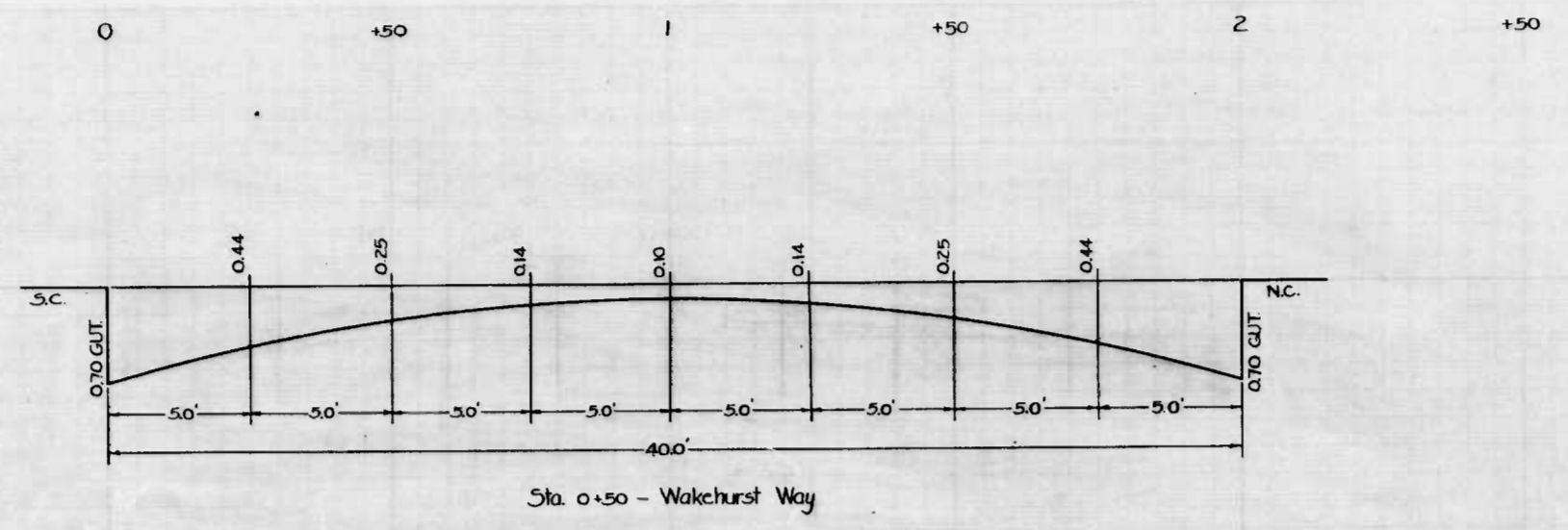
SCALE: HOR. 1" = 20.0  
 VER. 1" = 2.0

CORRECTED: *Edward J. Medsker*  
 ASSOCIATE ENGINEER  
 APPROVED: *Edward J. Medsker*  
 ENGR. PLANS & SURVEYS CO.

APPROVED: *George H. Carter*  
 HIGHWAY ENGINEER  
 APPROVED: *George H. Carter*  
 CHIEF ENGINEER

DRAWN BY: *A. Gronert*  
 CHECKED BY: *H. H. Hering*  
 ENGINEER IN CHARGE OF DRAWING

*one sheet*



**NOTE:**  
THE ISSUANCE OF THIS PROFILE DOES NOT COMMIT THE CITY TO THE ACCEPTANCE AND/OR IMPROVEMENT OF ANY THOROUGHFARES SHOWN THEREON.

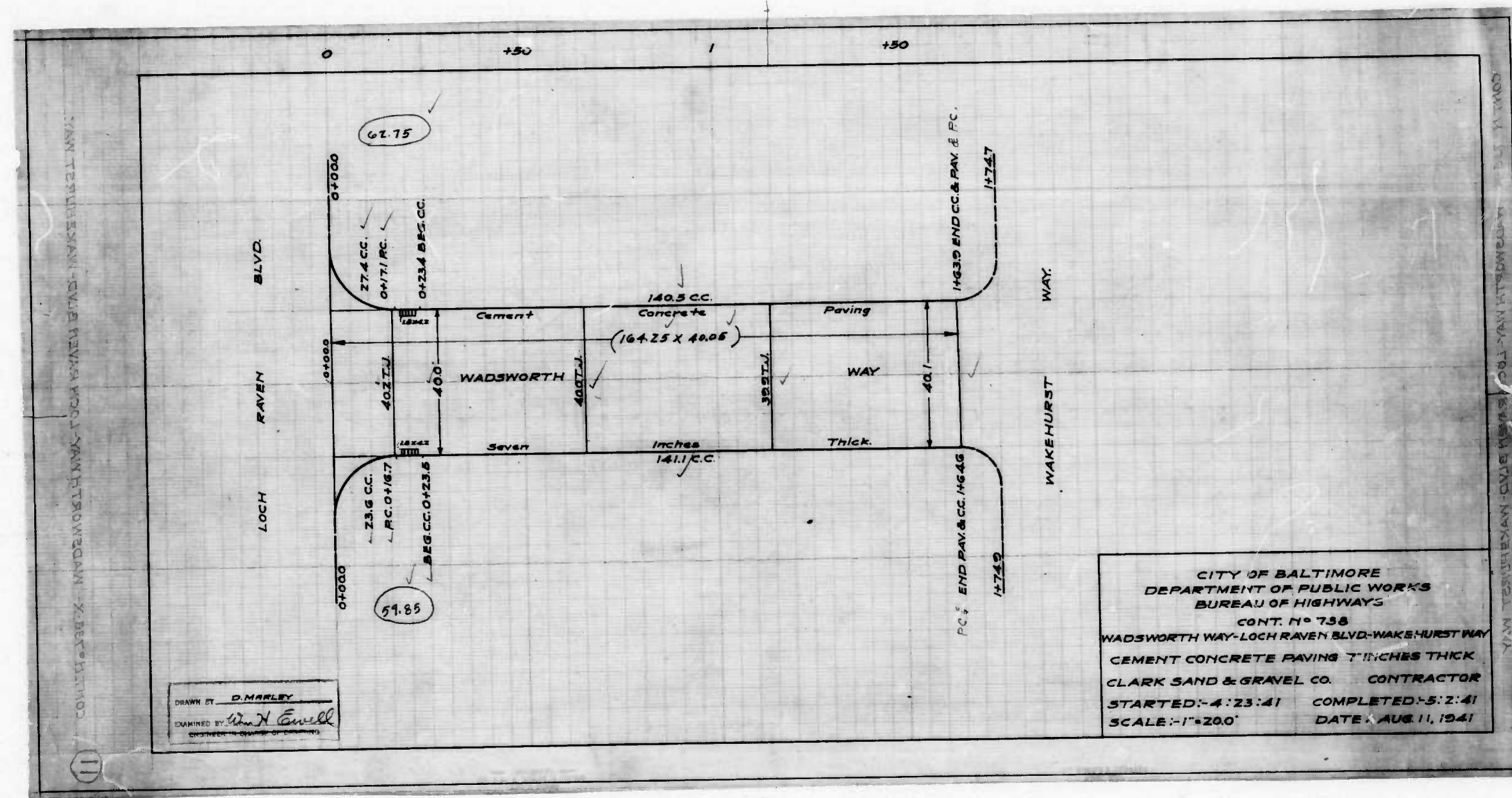
CITY OF BALTIMORE  
DEPARTMENT OF PUBLIC WORKS  
BUREAU OF HIGHWAYS  
PROFILE OF  
WADSWORTH WAY - LOCH RAVEN BLVD. - 100' ± E. WAKEHURST WAY  
CONT. N° 738

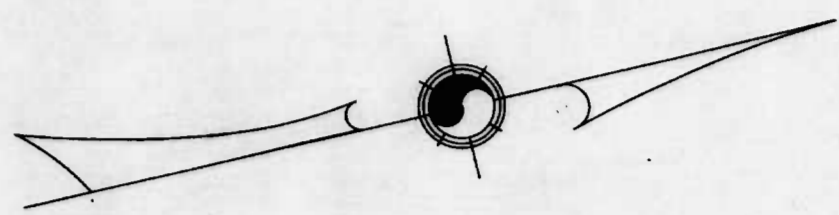
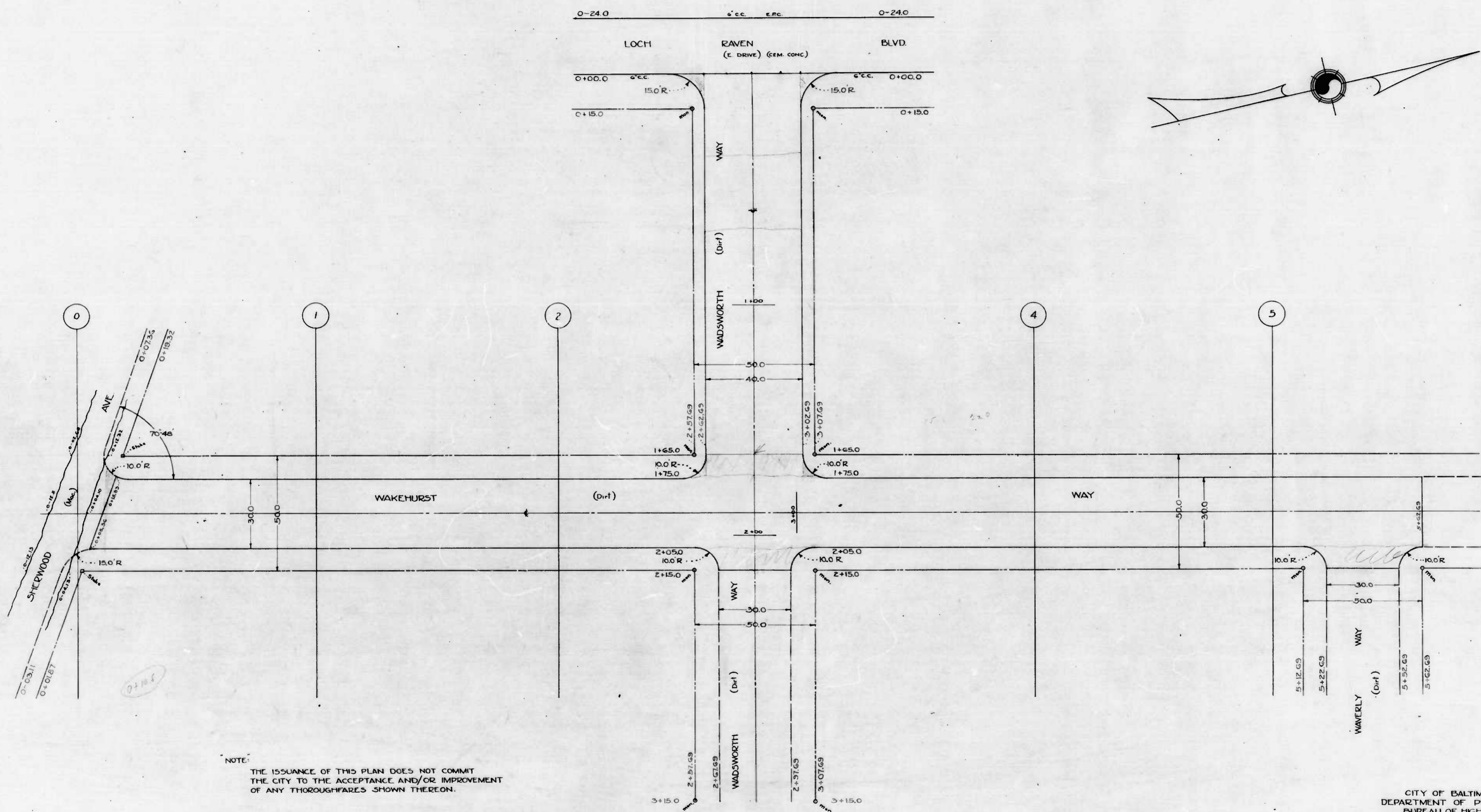
SCALE: HOR: 1" = 20.0' VER: 1" = 2.0'  
BOOK - MISC. 45  
MARCH 29, 1941.

CORRECT: *John S. ...* ASSOCIATE ENGINEER  
APPROVED: *Edward M. ...* ENGR. PLANS & SURVEYS  
APPROVED: *George ...* HIGHWAY ENGINEER  
APPROVED: *George ...* CHIEF ENGINEER

DRAWN BY: *A. Gronert*  
EXAMINED BY: *Heinrich ...*  
ENGINEER IN CHARGE OF PLANS

*one sheet*





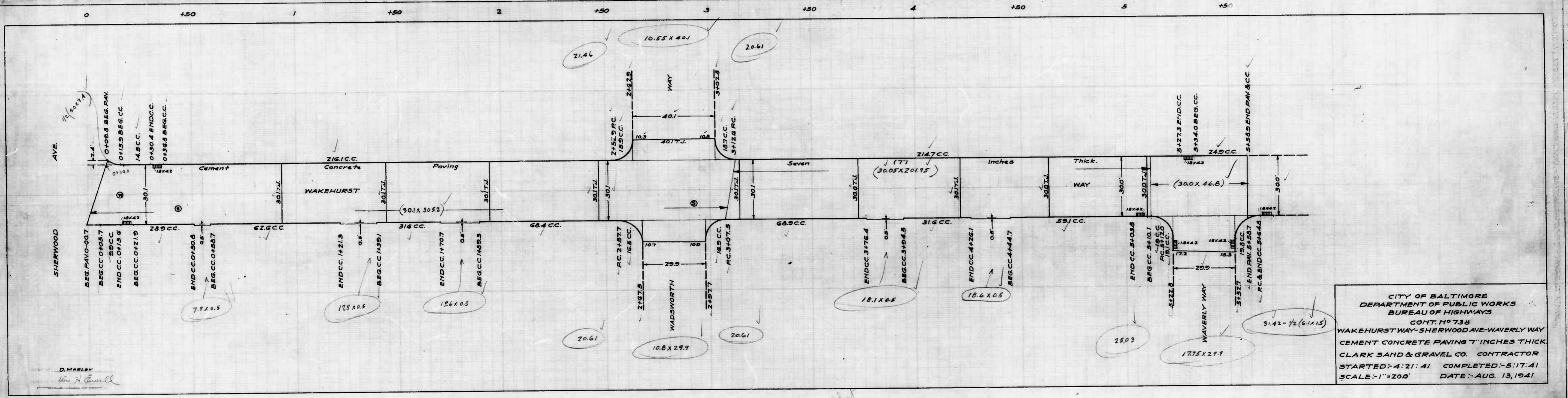
NOTE:  
 THE ISSUANCE OF THIS PLAN DOES NOT COMMIT  
 THE CITY TO THE ACCEPTANCE AND/OR IMPROVEMENT  
 OF ANY THOROUGHFARES SHOWN THEREON.

CITY OF BALTIMORE  
 DEPARTMENT OF PUBLIC WORKS  
 BUREAU OF HIGHWAYS  
 LAY-OUT OF  
 WAKEHURST WAY - SHERWOOD AVE - WAVERLY WAY  
 WADSWORTH WAY - LOCH RAVEN BLVD. - WAKEHURST WAY  
 CONT. N° 738  
 MARCH 29, 1941  
 SCALE: 1" = 20.0' BOOK N° MISC. # 45

APPROVED: *James G. Bell* CHIEF ENGINEER  
 APPROVED: *Edward H. Hatcher* ENGR. PLANS & SURVEYS  
 CORRECT: *John J. Grogan* ASSOCIATE ENGINEER  
 APPROVED: *George B. Carter* HIGHWAYS ENGINEER

DESIGNED BY: A. Granger  
 DRAWN BY: H. Weisberg

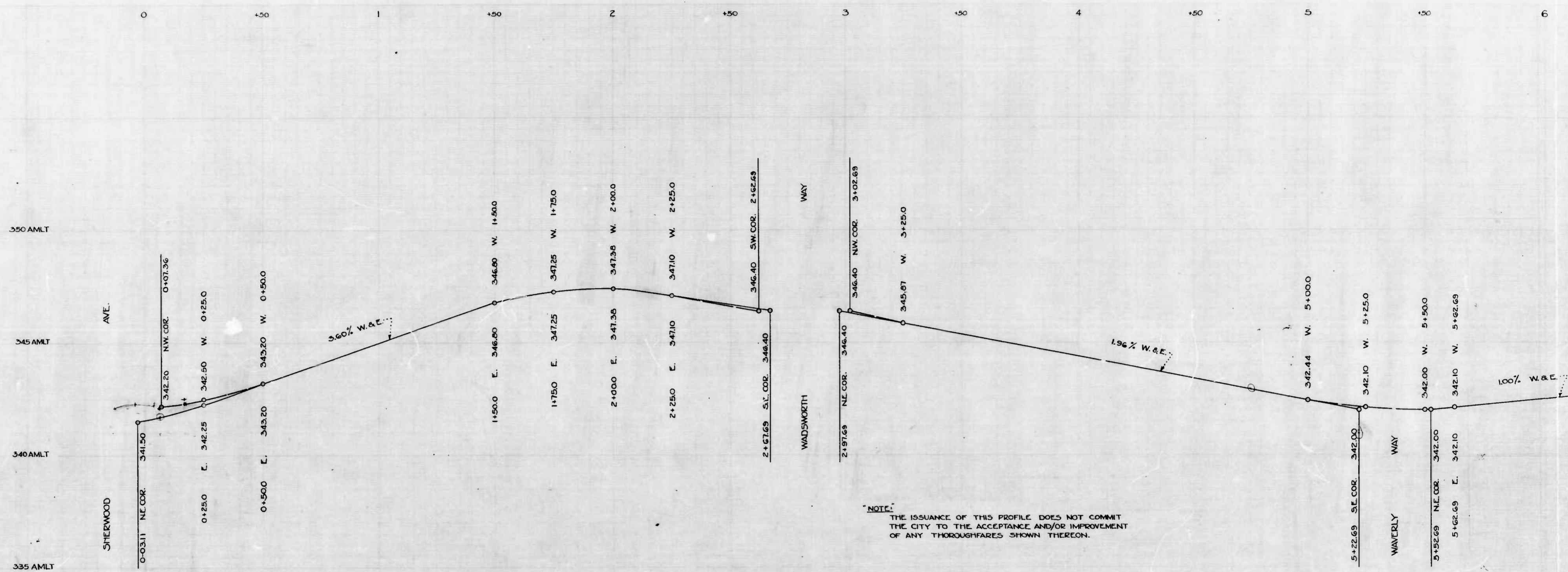
*on shot*



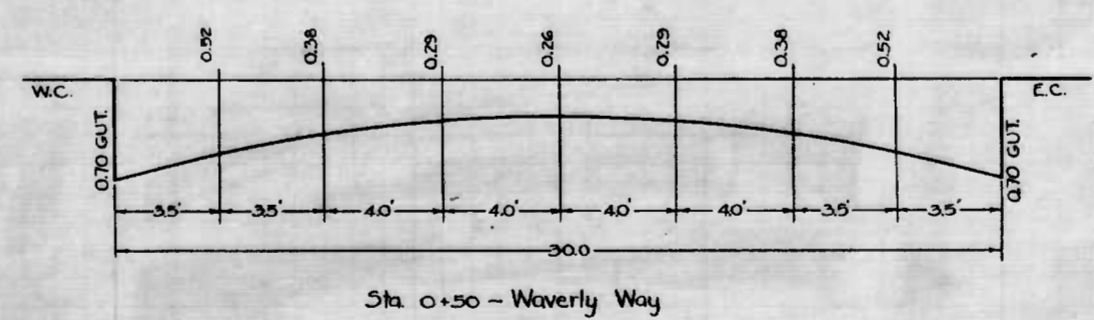
CITY OF BALTIMORE  
 DEPARTMENT OF PUBLIC WORKS  
 BUREAU OF HIGHWAYS  
 CONT. NO. 738  
 WAKEHURST WAY-SHERWOOD AVE-WAVERLY WAY  
 CEMENT CONCRETE PAVING 7" INCHES THICK  
 CLARK SAND & GRAVEL CO. CONTRACTOR  
 STARTED-4:21:41 COMPLETED-5:17:41  
 SCALE-1"=20.0' DATE-AUG. 13, 1941

D. MARLEY  
 Wm. H. Ewell





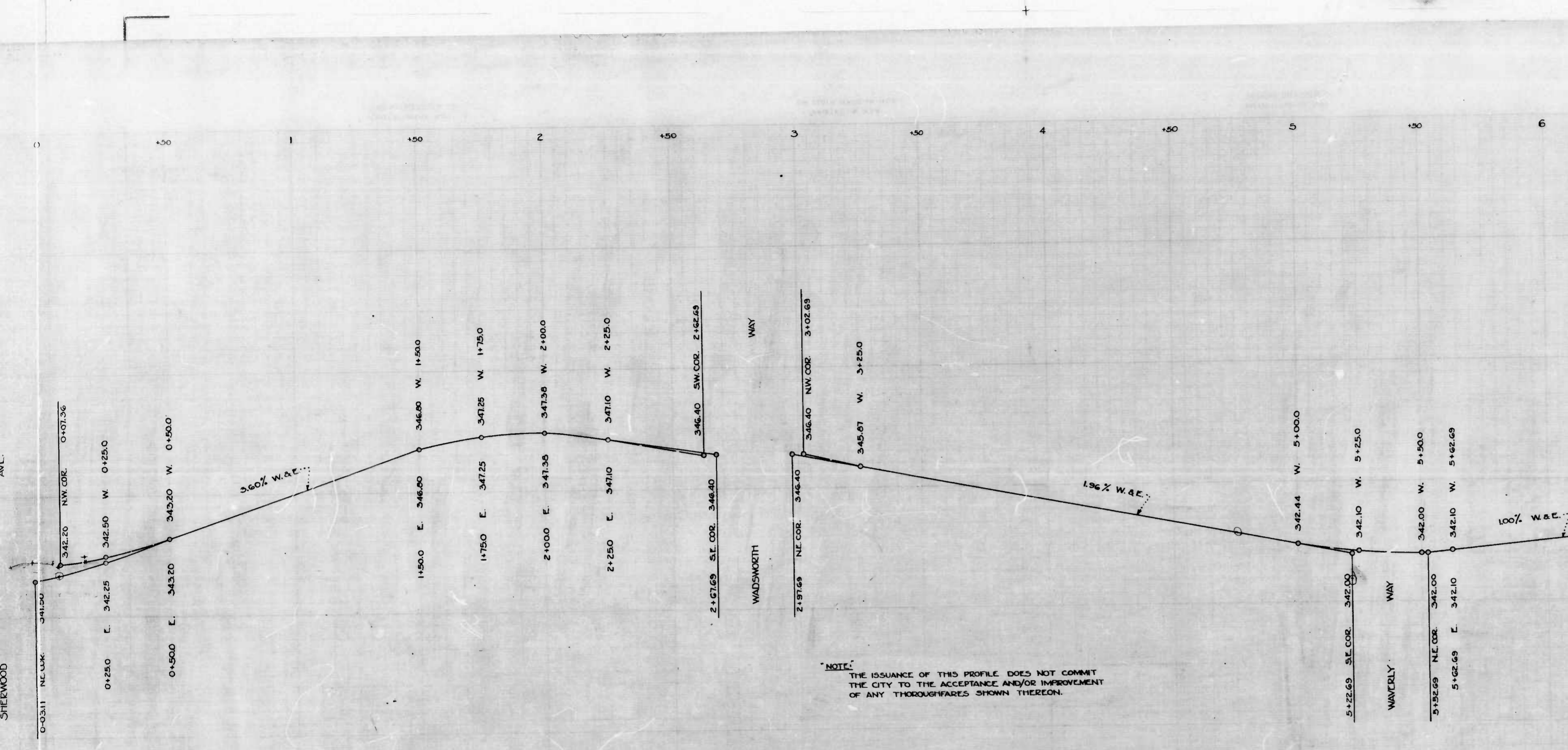
NOTE:  
 THE ISSUANCE OF THIS PROFILE DOES NOT COMMIT  
 THE CITY TO THE ACCEPTANCE AND/OR IMPROVEMENT  
 OF ANY THOROUGHFARES SHOWN THEREON.



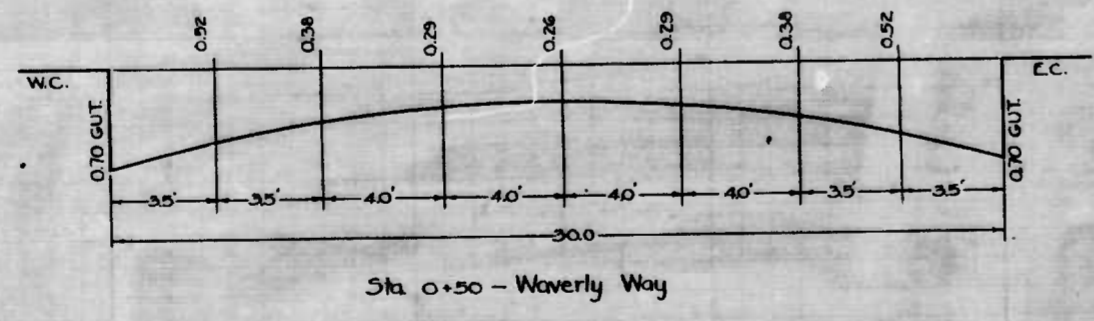
DESIGNED BY: **A. Gronert**  
 DRAWN BY: **W. Weisberg**  
 ENGINEER IN CHARGE OF QUALITY

DEPARTMENT OF  
 WAKEHURST  
 SCALE: HORIZONTAL  
 VERTICAL  
 CORRECTED  
 APPROVED  
 Edward J. [Signature]  
 ENGR. PLANS & SPEC.

*one sheet*



NOTE:  
THE ISSUANCE OF THIS PROFILE DOES NOT COMMIT  
THE CITY TO THE ACCEPTANCE AND/OR IMPROVEMENT  
OF ANY THOROUGHFARES SHOWN THEREON.



CITY OF BALTIMORE  
DEPARTMENT OF PUBLIC WORKS  
BUREAU OF HIGHWAYS  
PROFILE OF  
WAKEHURST WAY - SHERWOOD AVE. - WAVERLY WAY  
CONT. N° 738  
SCALE: HOR: 1"=200' BOOK - MISC #45  
VER: 1"=2.0' MARCH 29, 1941.  
CORRECTED: *Edw. J. Hadlee* APPROVED: *Geo. H. Carter*  
ASSOCIATE ENGINEER HIGHWAY ENGINEER  
APPROVED: *Edw. J. Hadlee* APPROVED: *George Colby*  
ENGR. PLANS & SURVEYS CHIEF ENGINEER

one dot

2 whole