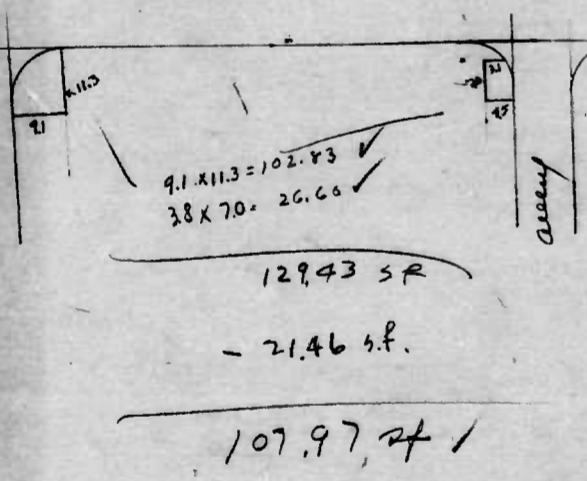


735

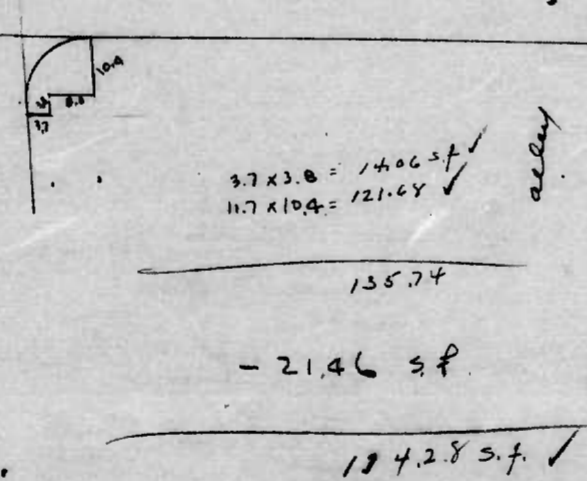
RATIO - 24

350.70

Asphalt Drive



Asphalt Drive



alley

Total Sidewalk this sheet  
350.70 s.f.

Handhead

3.85 x 115 = 442.75 s.f.

Lot 1







735

RATIO - 24

$1956 \times 50 = 3970.00$   
 $17 \times 50 = 63.50$   
 $10 \times 4.5 = 22.50$   


---

 $4064.00$   
 $4064.50$

$150 \times 44 = 22.00$   
 $15 (2.5 \times 44) = 165.00$   
 $56 \times 50 = 27.50$   
 $194 \times 44 = 41.36$   
 $114.4 \times 44 = 63.36$   
 $114.4 \times 44 = 63.36$   
 $3.5 \times 2.6 = 30.10$   


---

 $412.68$

$47 \times 44 = 23.03$   
 $45 \times 44 = 63.45$   
 $176.45 \times 2.9 = 191.25$   
 $20 \times 4.8 = 9.60$   
 $10.5 \times 4.5 = 47.25$   


---

 $334.58$   
 $- 21.46 \text{ s.f.}$   


---

 $\text{Total } 313.12$

$50 \times 8.4 = 25.20$   
 $65 \times 5.0 = 32.50$   
 $272 \times 4.4 = 119.68$   
 $44 \times 7.5 = 11.00$   
 $44 \times 10.2 = 44.88$   
 $5.0 \times 5.1 = 25.50$   
 $2.3 \times 10.3 = 23.69$   


---

 $282.45$   
 $- 21.46 \text{ s.f.}$   


---

 $260.99$

$100 \times 50 = 50.00$   
 $11.5 \times 9.1 = 104.65$   


---

 $154.65$   
 $- 21.46 \text{ s.f.}$   


---

 $133.19$

center

align

alley

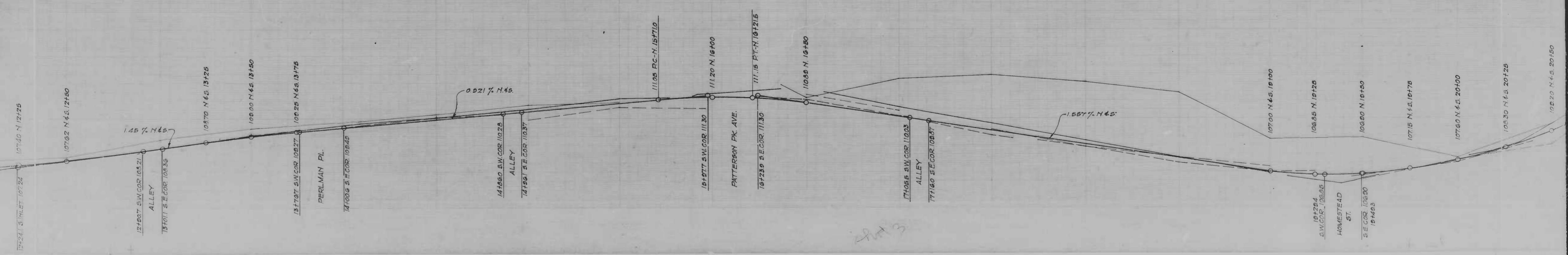
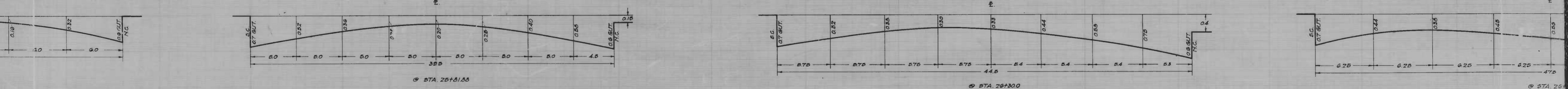
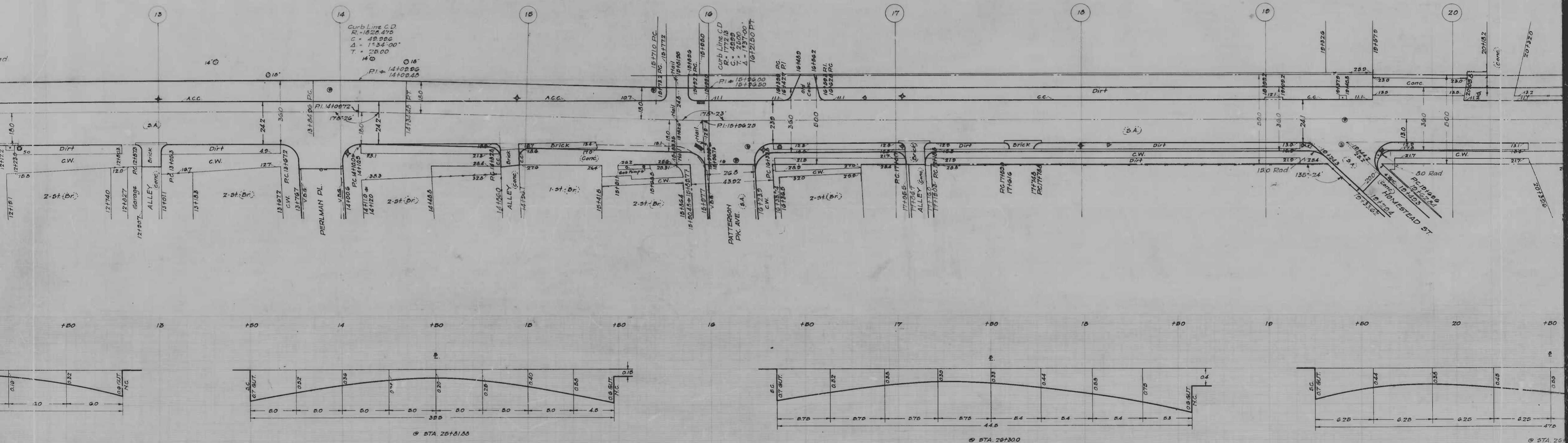
Passway

shot 2

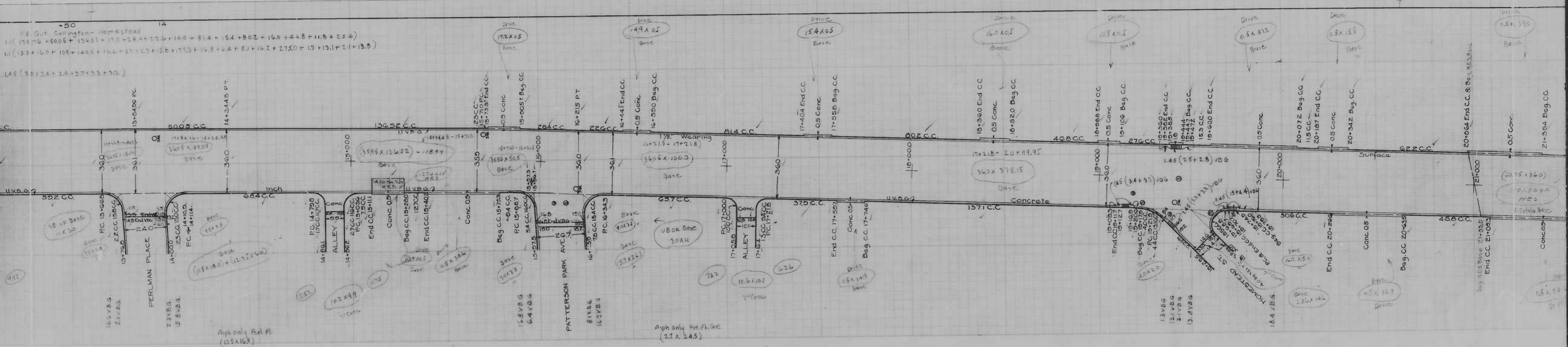
shot 1











Asph Only Port Pl. (13.5 x 16.3)

Asph Only Port Pl. (2.1 x 2.4.5)

13.3VBG  
13.1VBG  
2.1VBG  
13.4VBG

(60.75 x 36.0)  
110.150 SF  
1.50 x 1.50  
1.50 x 1.50

735

RATIO - 24

Wolfe-Wash H.S. 1745.0 s.f. ✓  
Wash-Coll " 40360 s.f. ✓  
H side  
Wolfe-Wash ss.  
8,263.50 2f.  
940.43 Insp. white Point  
918.17 Ma  
22.2624 Diff.  
945.63 Imp Report  $\frac{1091}{9}$   
98.19  
Areas plotted  
922.7024

735

RATIO - 24

5.75 x 4.9 = 28.18  
4.75 x 4.5 = 20.17  
3.1 x 3.0 = 9.30  
5.3 x 5.0 = 26.50  
84.17

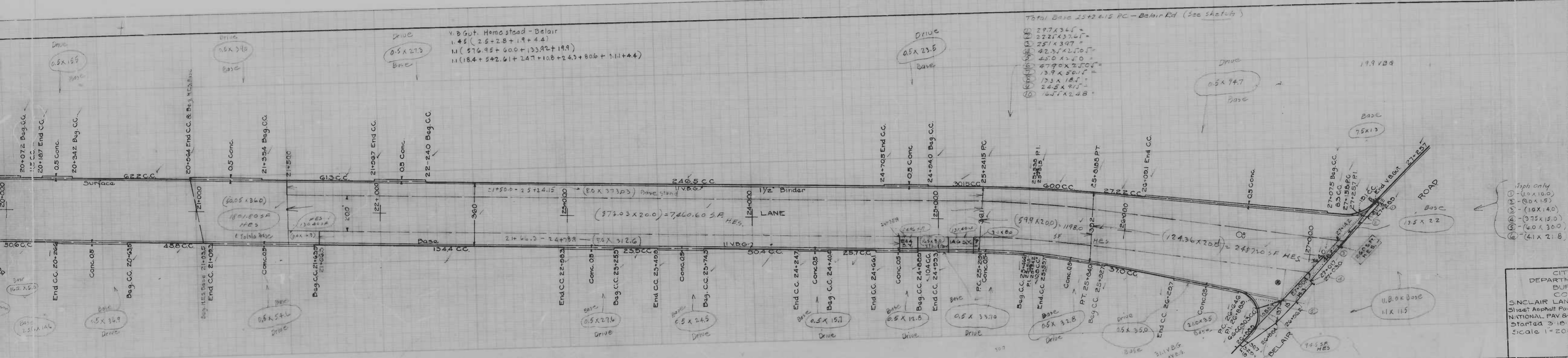
Belau Pal

2.43

1.824 - 5.155





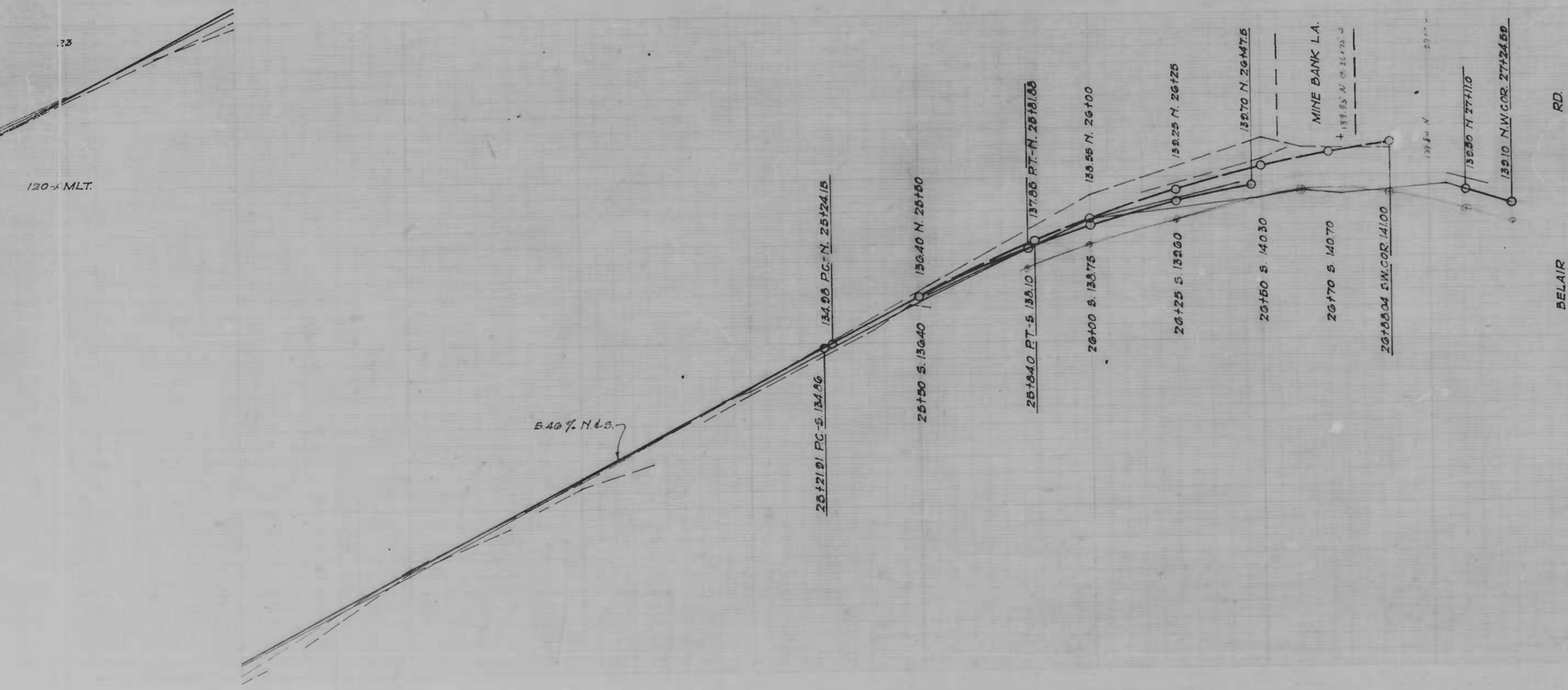
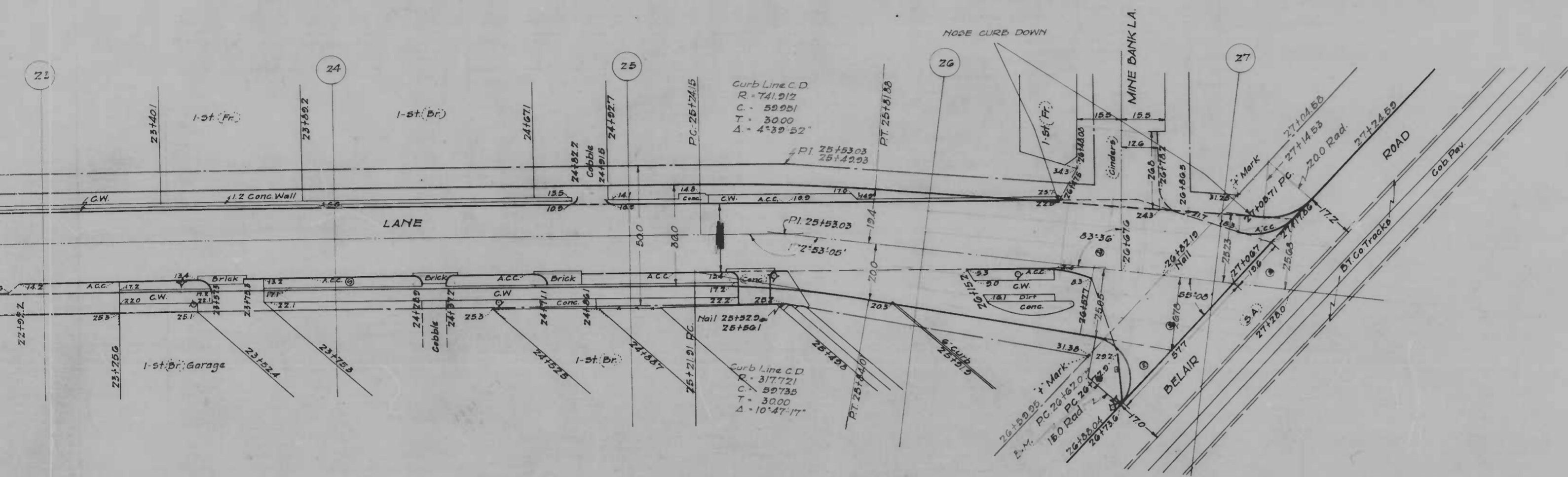


Total Drive 2542.415 PC - Balair Rd (See sketch)

297 x 36.5 =  
 2721 x 37.5 =  
 2571 x 39.7 =  
 423 x 42.5 =  
 450 x 45.0 =  
 4790 x 25.0 =  
 139 x 50.1 =  
 133 x 18.1 =  
 245 x 9.1 =  
 1271 x 2.28 =

- Asph only
- ① - (40 x 10.0)
  - ② - (80 x 15)
  - ③ - (10 x 40)
  - ④ - (375 x 15.0)
  - ⑤ - (60 x 30.0)
  - ⑥ - (41 x 21.8)

CITY DEPARTMENT  
 BUR  
 CO  
 SINCLAIR LANE  
 Sheet Asphalt Pav  
 NATIONAL PAV &  
 Started 3/12/1  
 Scale 1" = 20'



CITY OF BALTIMORE  
 DEPARTMENT OF PUBLIC WORKS  
 BUREAU OF HIGHWAYS  
 PLAN & PROFILE  
 SINCLAIR LA - WOLFE ST TO BELAIR RD.  
 CONT. No. 735

Scales - Plan - 1" = 200'  
 Profile - Hor. - 1" = 200'  
 Var. - 1" = 20'

Book No. X-140  
 Dec. 19, 1940

Approved -  
 George Cobb Chief Engineer  
 Approved -  
 Edward H. ... Eng. Plans & Survey  
 Approved -  
 ... Associate Engineer  
 Approved -  
 ... Highways Engineer

Sheet 5

