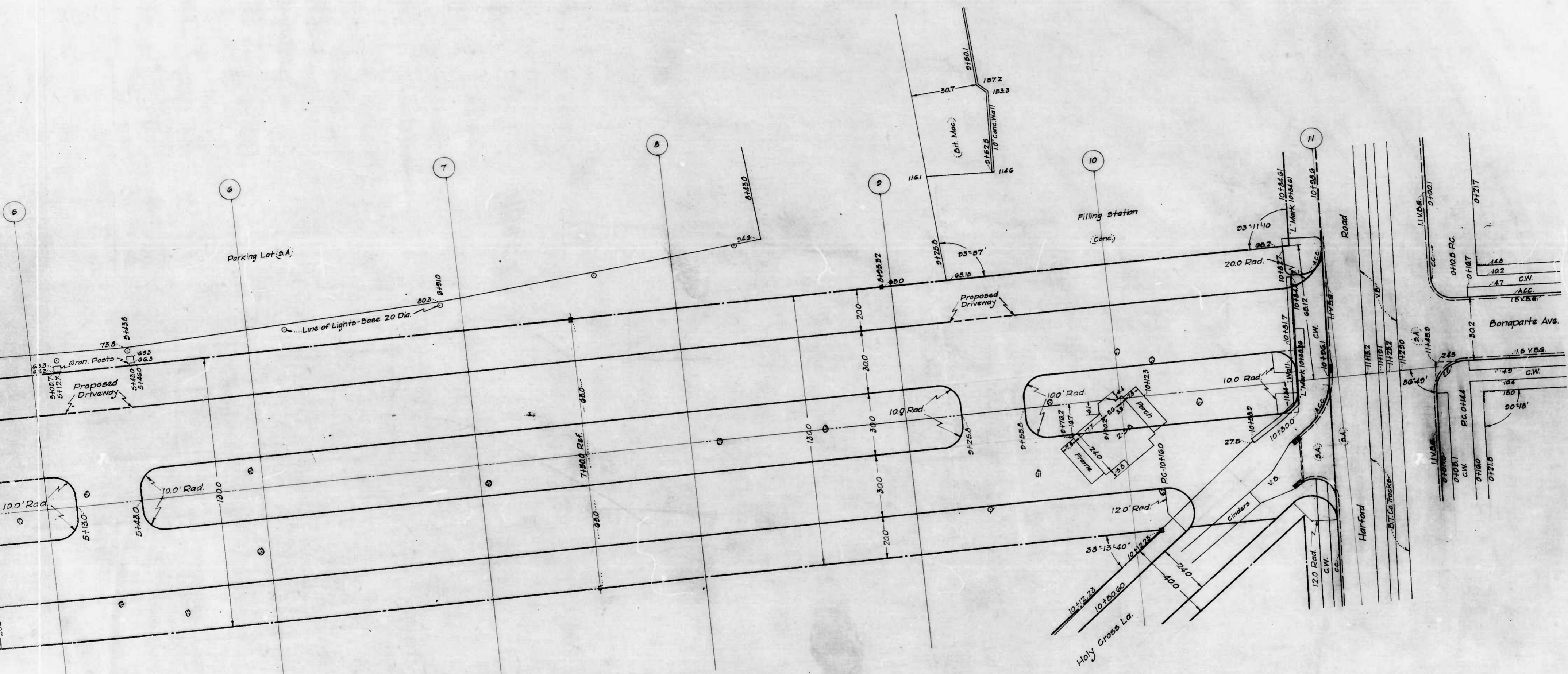


$$(18.5 \times 5.0) + (16.35 \times 29.9) + (29.5 \times 7.5) + (24.0 \times 29.5) + (20.5 \times 6.75) - (4.5 \times 11.0) + (4.12 \times 17.1) = 4,778.21 \text{ SF}$$

M.E.S. Co. Hartford Rd 530.9 SF  
See Memo # 314

CITY OF BALTIMORE  
DEPARTMENT OF PUBLIC WORKS  
BUREAU OF HIGHWAYS -  
CONTRACT NO 729  
BROADWAY - NORTH AVE. - HARTFORD RD.  
SHEET ASPHALT PAV. 1/2 WEAR SUR. 1/2 BIN ON A 6" CONC. BASE  
STARTED 7-22-40 COMPLETED 3-24-40  
NATIONAL PAV. & CONST. CO. CONTRACTORS  
SCALE 1" = 20' OCTOBER 22, 1940

Sheet 2



CITY OF BALTIMORE  
 DEPARTMENT OF PUBLIC WORKS  
 BUREAU OF HIGHWAYS  
 LAYOUT OF  
 BROADWAY-NORTH AVE.  
 Cont. No. 72

Scale - 1"=200'

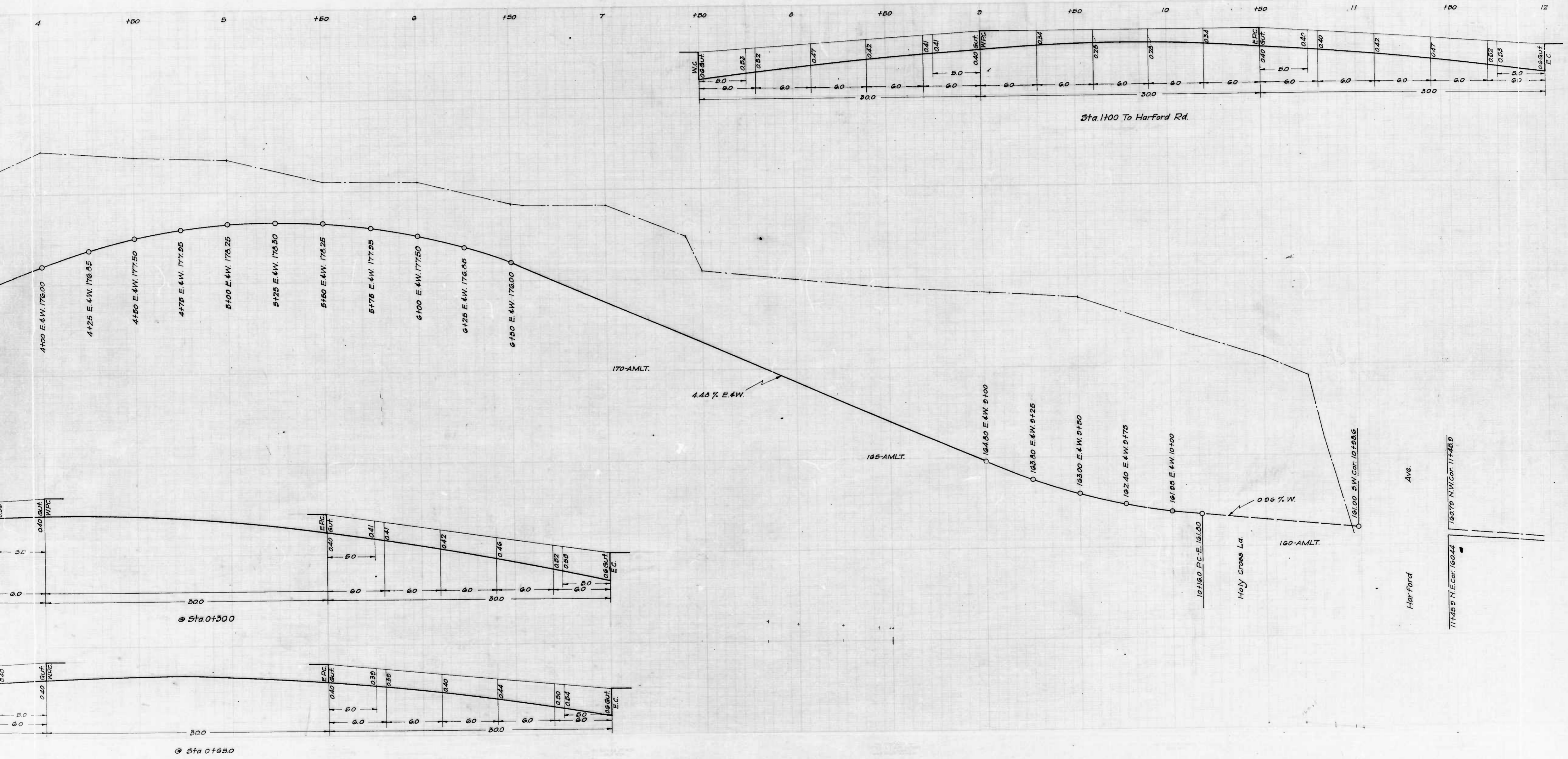
Approved: \_\_\_\_\_ Location Approved: \_\_\_\_\_

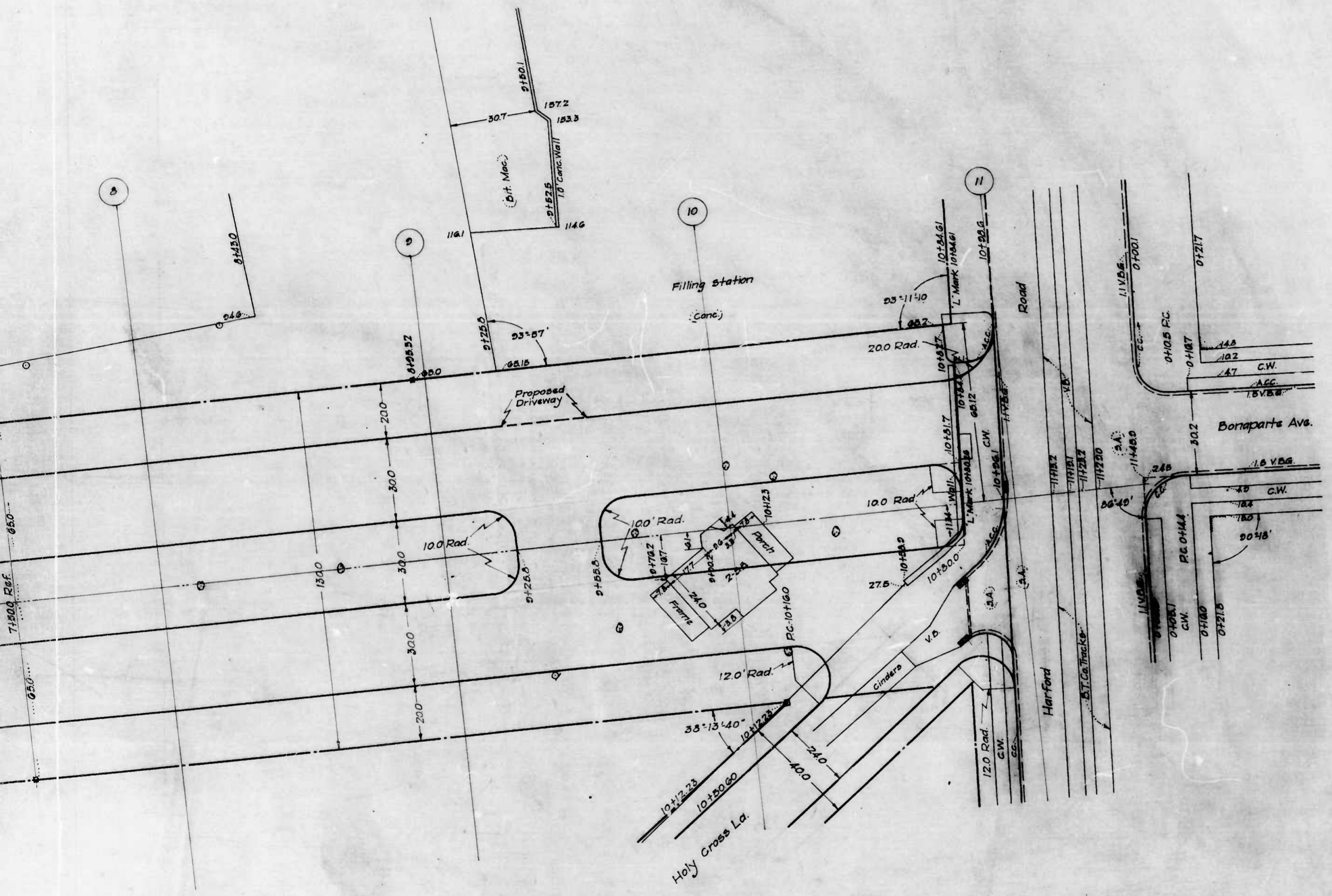
George C. Williams, Chief Engineer  
 Edward J. ... Engr. Plans & Surveys  
 ... Assoc.

Sheet 2

729

RATIO - 24



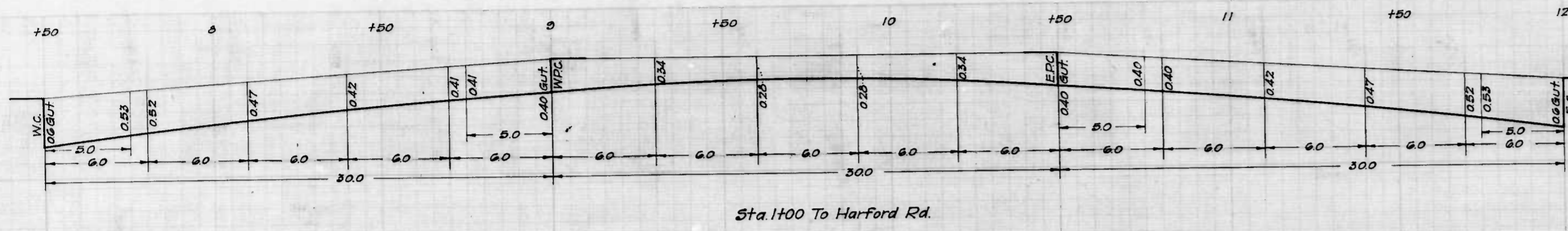


CITY OF BALTIMORE  
 DEPARTMENT OF PUBLIC WORKS  
 BUREAU OF HIGHWAYS  
 LAYOUT OF  
 BROADWAY-NORTH AVE. TO HARFORD RD.  
 Cont. No. 729

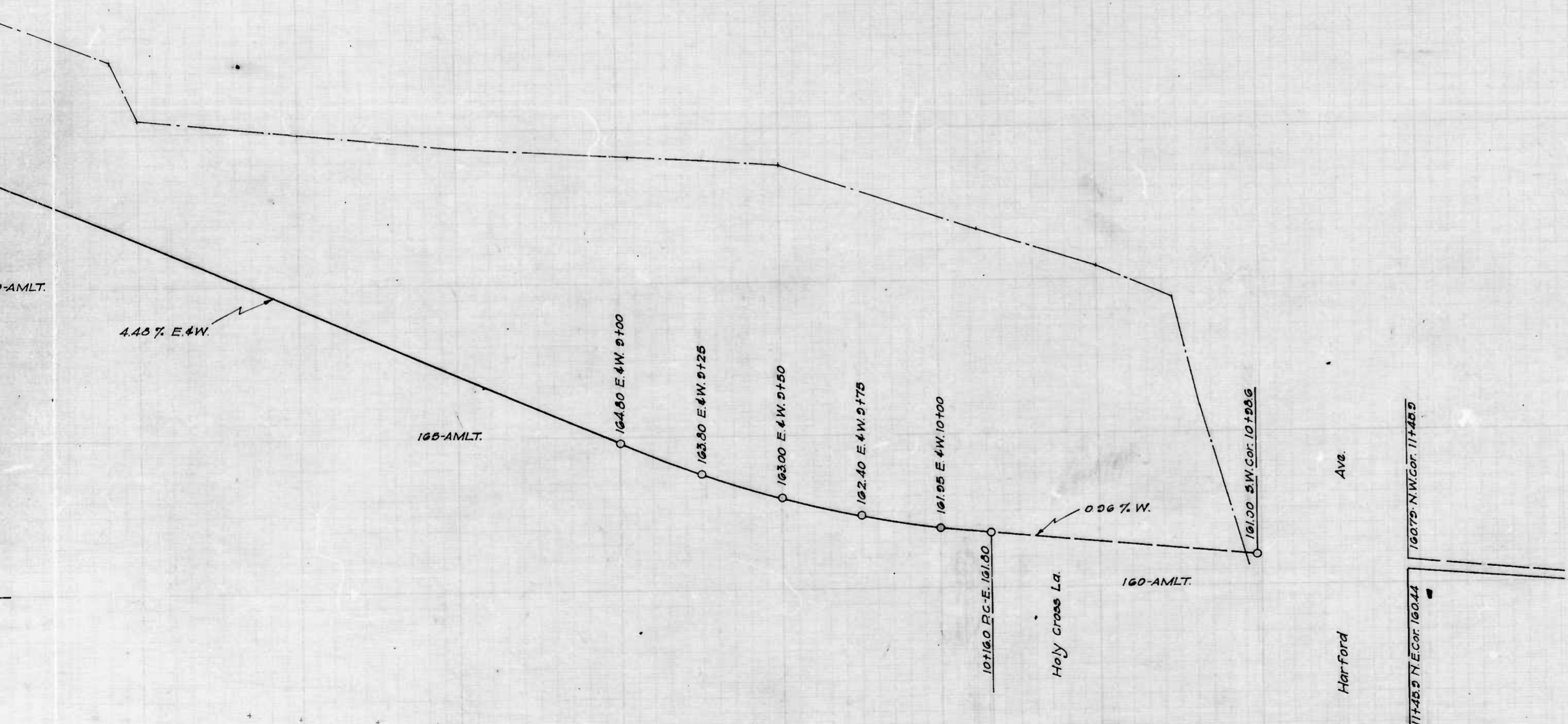
Scale: 1"=20.0' Book No. X-118  
 June 17, 1940  
 Approved: Location Approved: Correct: Approved:

George Call Chief Engineer  
 Samuel S. ... Engr. Plans & Surveys  
 ... Associate Engineer  
 ... Highways Engineer

Sheet 3

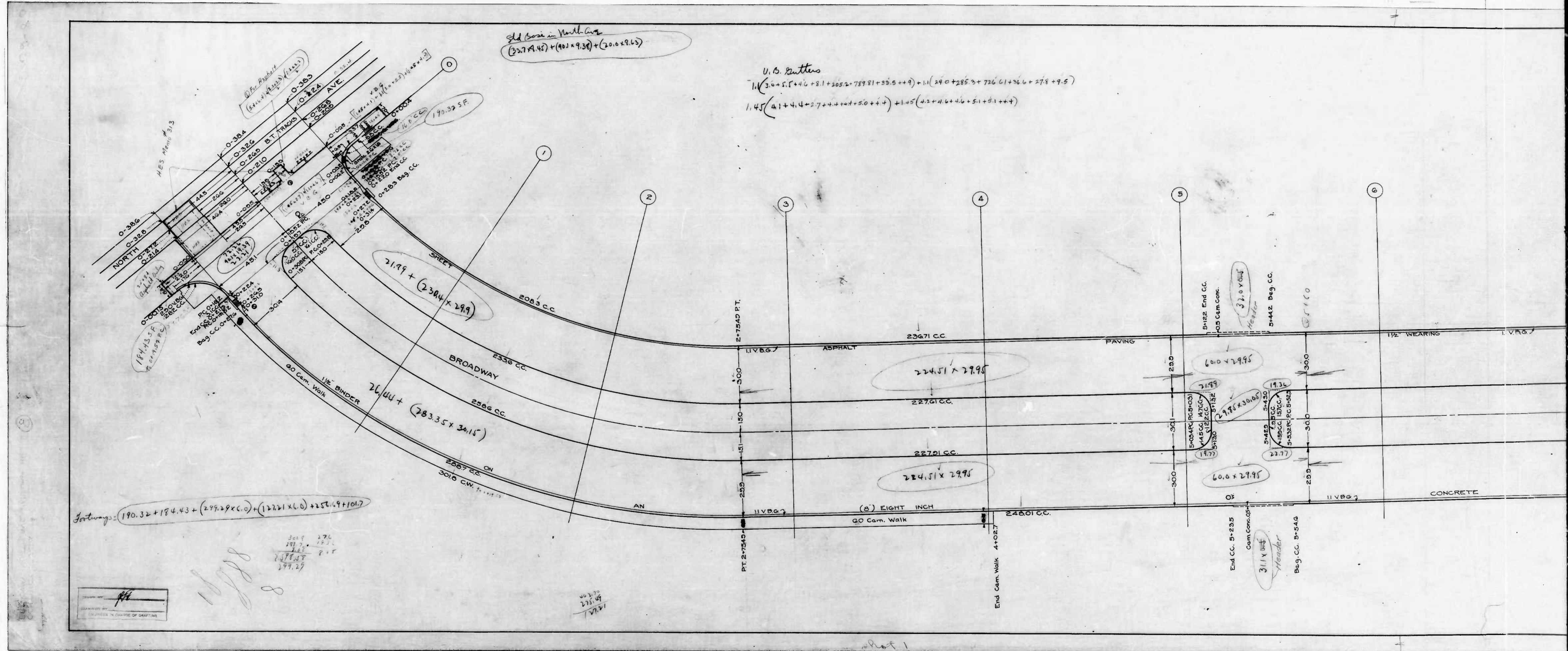


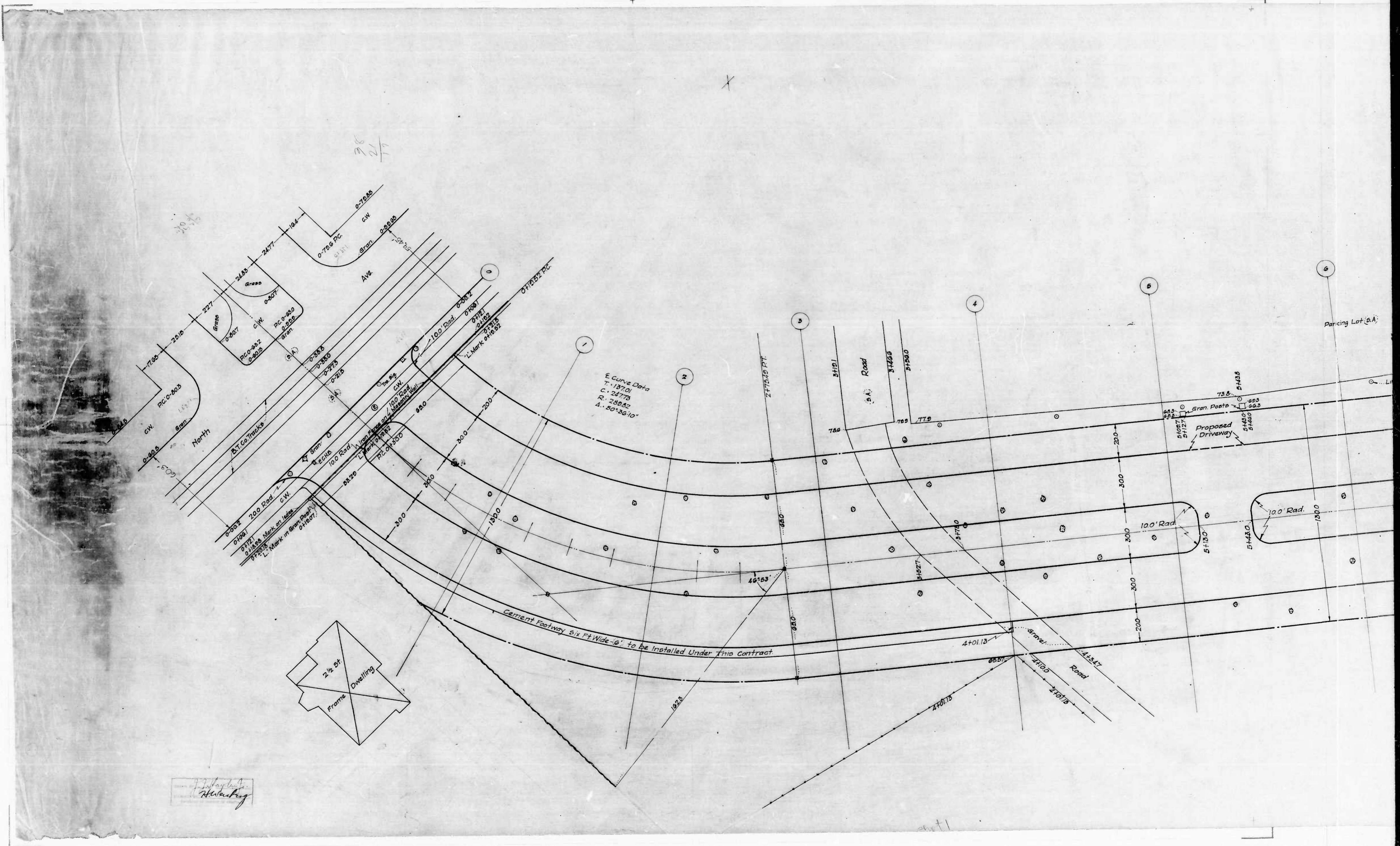
Sta. 1+00 To Harford Rd.



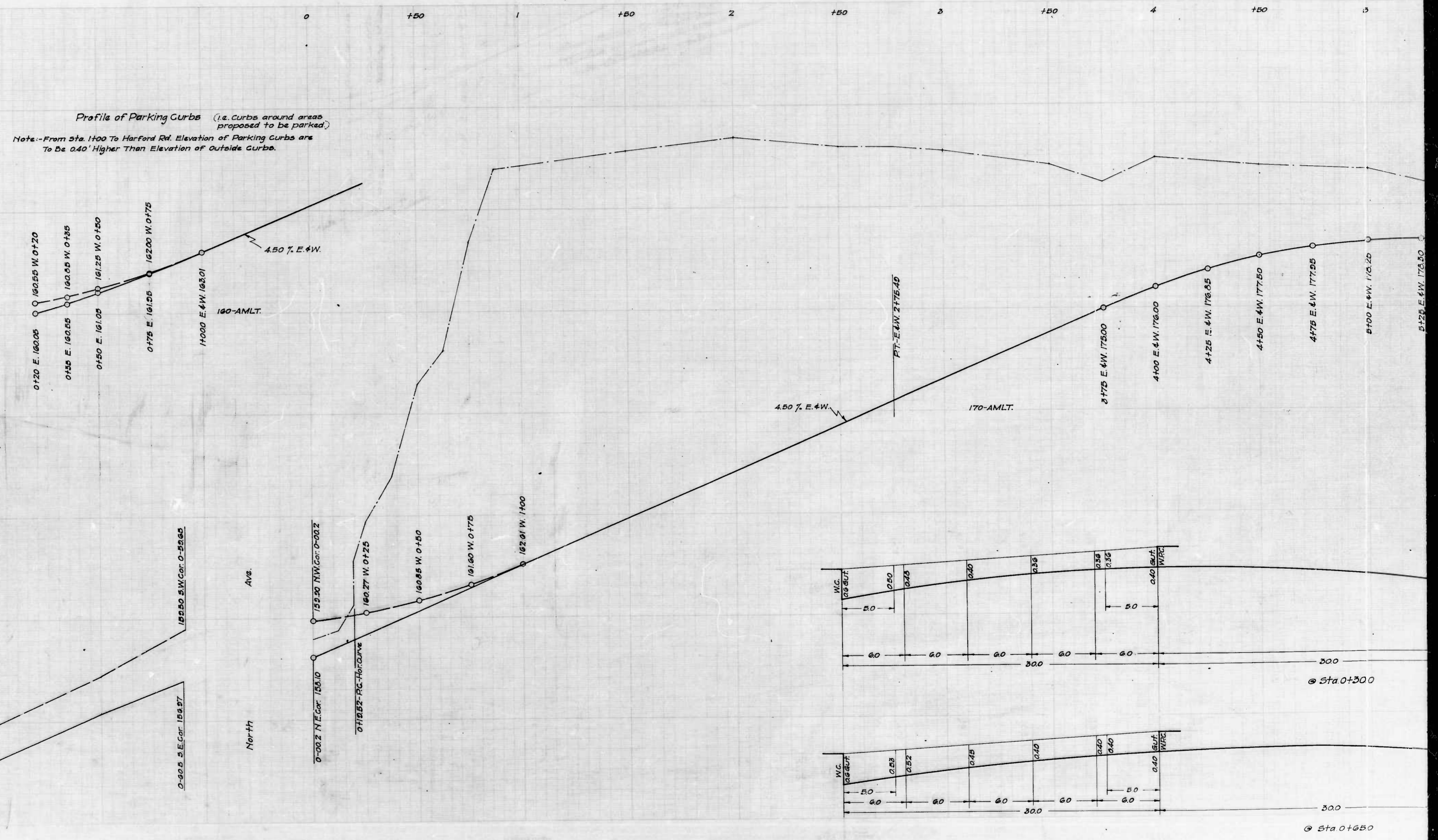
CITY OF BALTIMORE  
 DEPARTMENT OF PUBLIC WORKS  
 BUREAU OF HIGHWAYS  
 ESTABLISHED GRADE OF  
 BROADWAY-NORTH AVE. TO HARFORD RD.  
 Cont. No. 729  
 Scales: Hor. - 1"=200' Book No. X-118  
 Ver. - 1"=20' June 17, 1940

Approved: \_\_\_\_\_ Location Approved: \_\_\_\_\_ correct: \_\_\_\_\_ Approved: \_\_\_\_\_  
 George Collet Chief Engineer Edward Hecker Engr.-Plans & Surveys Glen Gannon Associate Engineer Harold Lewis Highways Engineer





*Handwritten signature:*  
 H. H. H. H. H.



DESIGNED BY  
*[Signature]*  
 DRAWN BY  
*[Signature]*  
 CHECKED BY  
*[Signature]*

Sheet 1