

Sta. 0+000	
W. CURB	
M. QUARTER	48.25
E. QUARTER	48.25
DEPTH W. CUTTER	

Sta. 0+250	
W. CURB	
M. QUARTER	49.40
E. QUARTER	49.40
DEPTH W. CUTTER	

Sta. 1+000	
W. CURB	
M. QUARTER	50.65
E. QUARTER	50.65
DEPTH W. CUTTER	

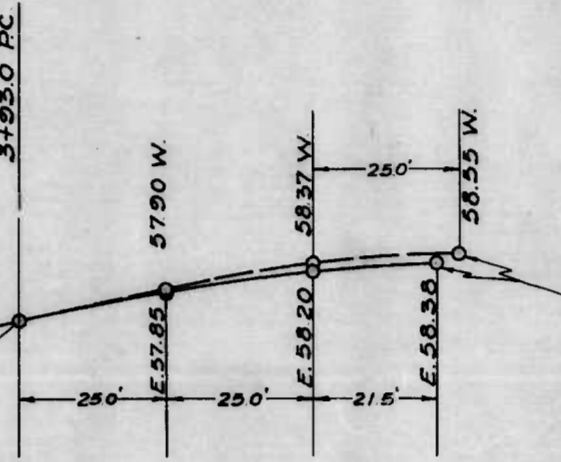
Sta. 1+500	
W. CURB	51.90
M. QUARTER	51.90
E. QUARTER	51.90
DEPTH W. CUTTER	

1+500.55 PT.

Sta. 1+750	
W. CURB	51.13
M. QUARTER	51.25
E. QUARTER	51.25
DEPTH W. CUTTER	.60

Sta. 1+750	
W. CURB	52.59
M. QUARTER	52.31
E. QUARTER	52.59
DEPTH W. CUTTER	.60

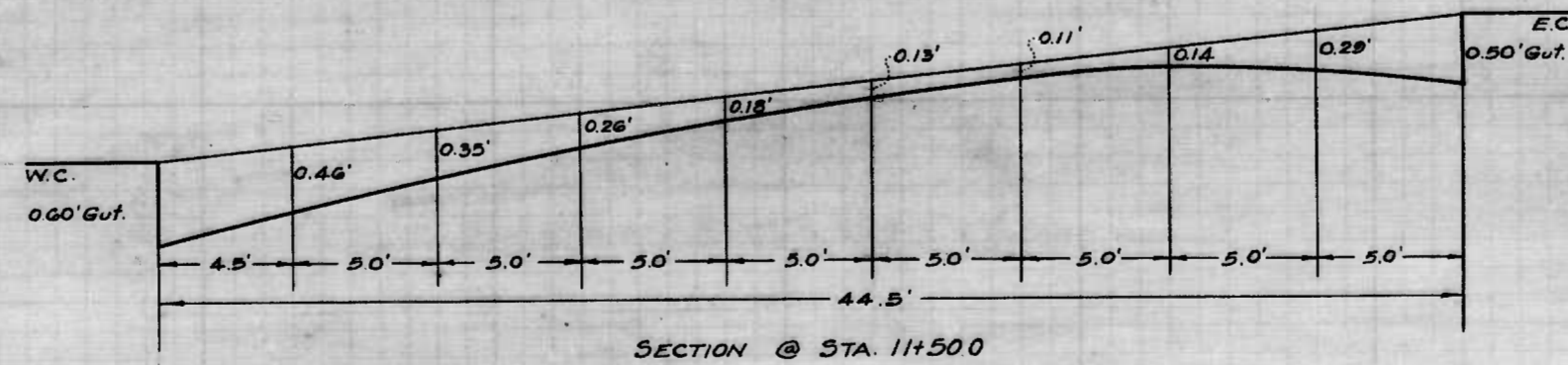
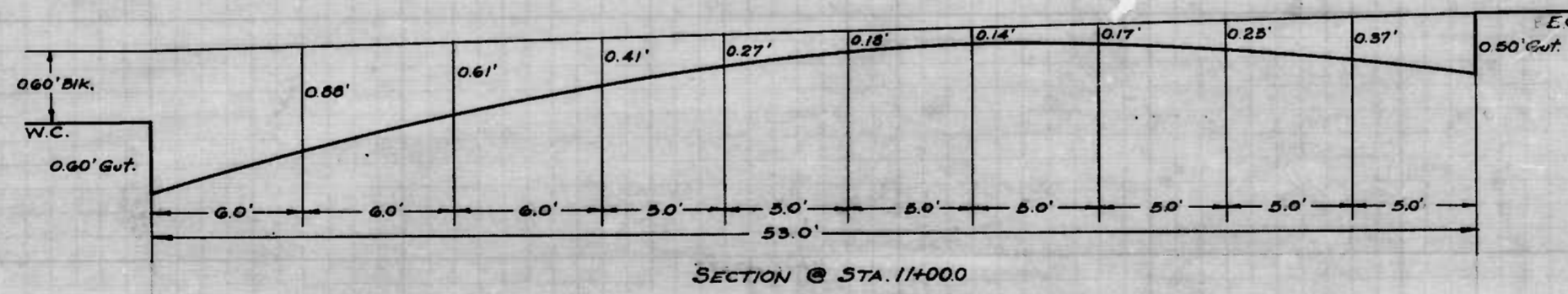
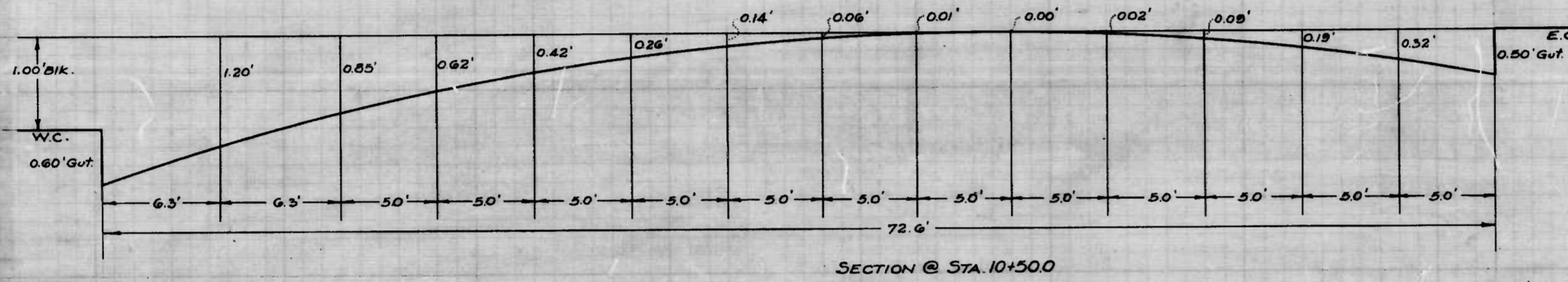
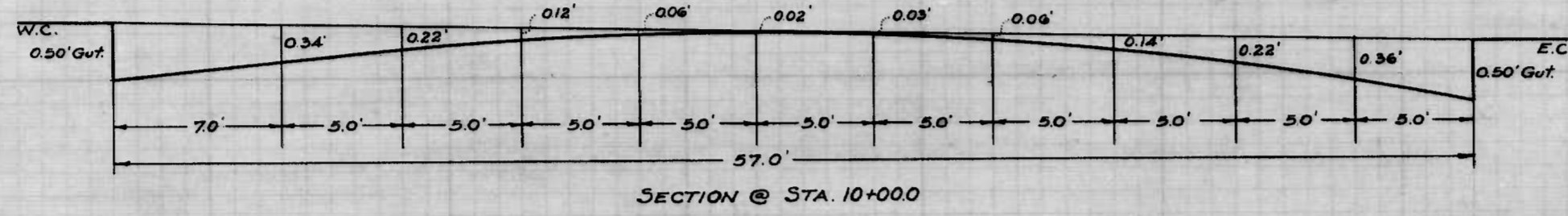
Sta. 3+950	
W. CURB	57.37
M. QUARTER	57.15
E. QUARTER	57.37
DEPTH W. CUTTER	.60



Sta. 0-250	
W. CURB	
M. QUARTER	47.70
E. QUARTER	47.70
DEPTH W. CUTTER	

Sta. 0+250	
W. CURB	
M. QUARTER	48.85
E. QUARTER	48.85
DEPTH W. CUTTER	

Sta. 0+750	
W. CURB	
M. QUARTER	50.00
E. QUARTER	50.00
DEPTH W. CUTTER	



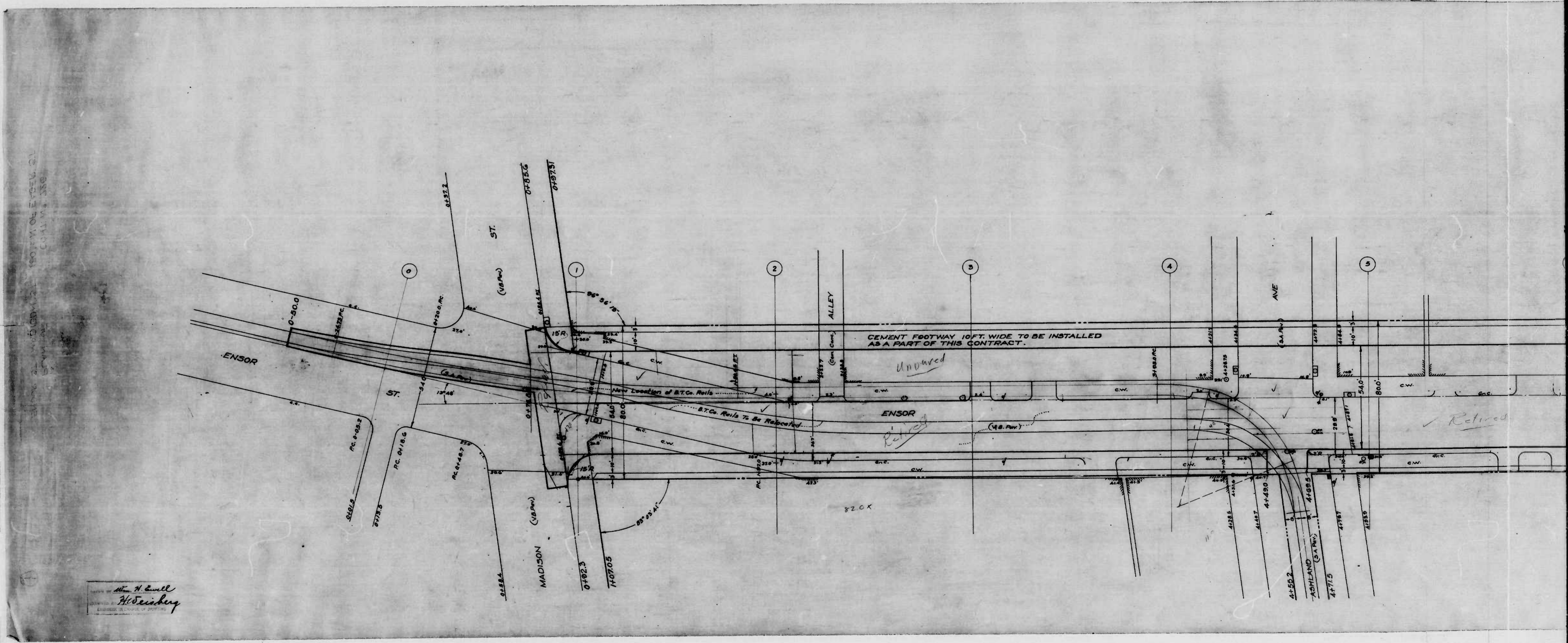
ENSOR ST. - EAGER ST. - 180' ± N.
 CROSS SECTIONS OF IMPROVEMENT
 CONT. N^o 726

ENSOR ST. - EAGER ST. - 180' ± N.
 CROSS SECTIONS OF IMPROVEMENT
 CONT. N^o 726

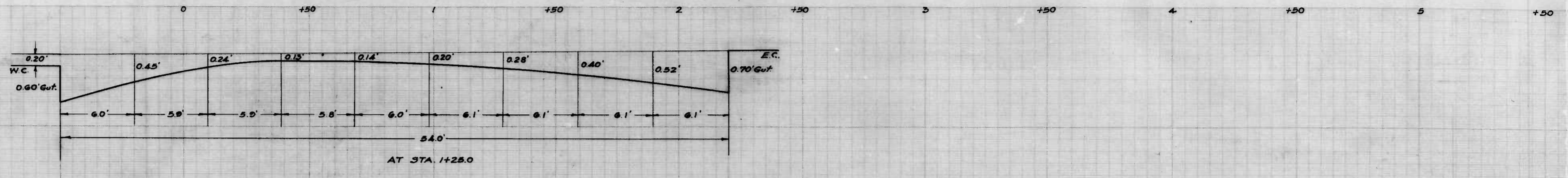
CITY OF BALTIMORE
 DEPARTMENT OF PUBLIC WORKS
 BUREAU OF HIGHWAYS
 CROSS SECTIONS OF IMPROVEMENT
 ENSOR ST. - EAGER ST. - 180' ± N.
 CONT. N^o 726

CORRECT APPROVED
Charles G. ... *Gene ...*
 ASSOCIATE ENGINEER HIGHWAYS ENGINEER

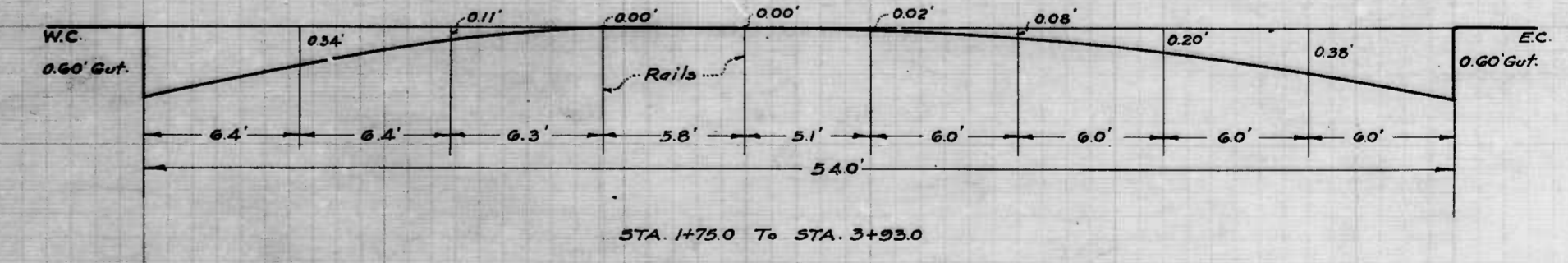
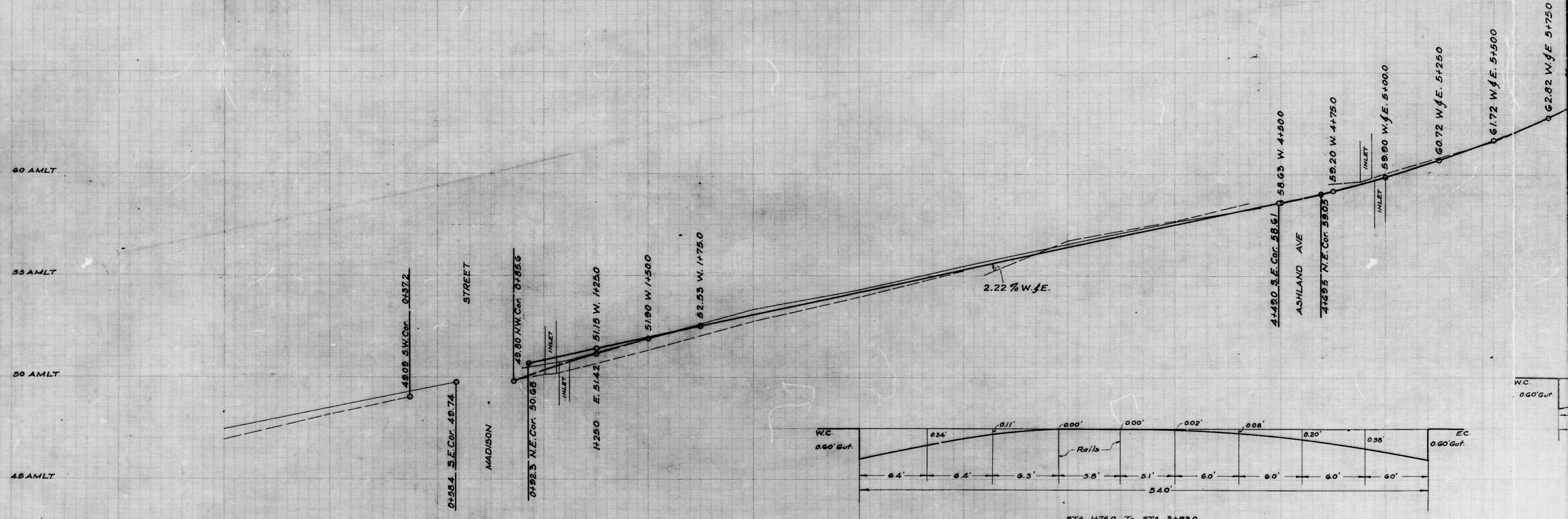
DRAWN BY *H. E. ...*
 ENGINEER BY *H. E. ...*
 ENGINEER IN CHARGE OF DRAFTING



Wm. H. Sewell
H. Feinberg
ENGINEERS & ARCHITECTS

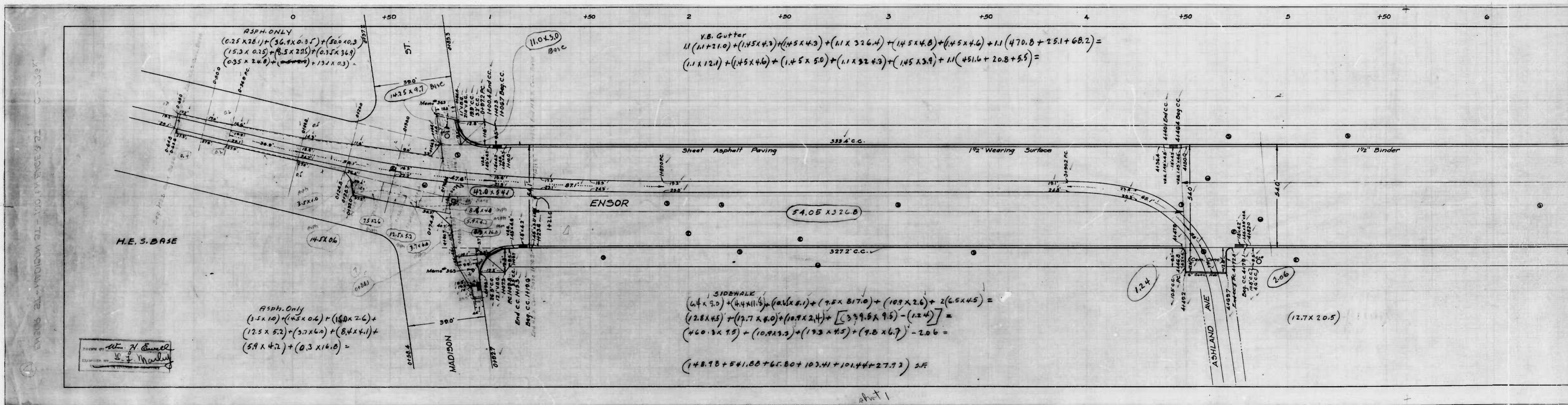


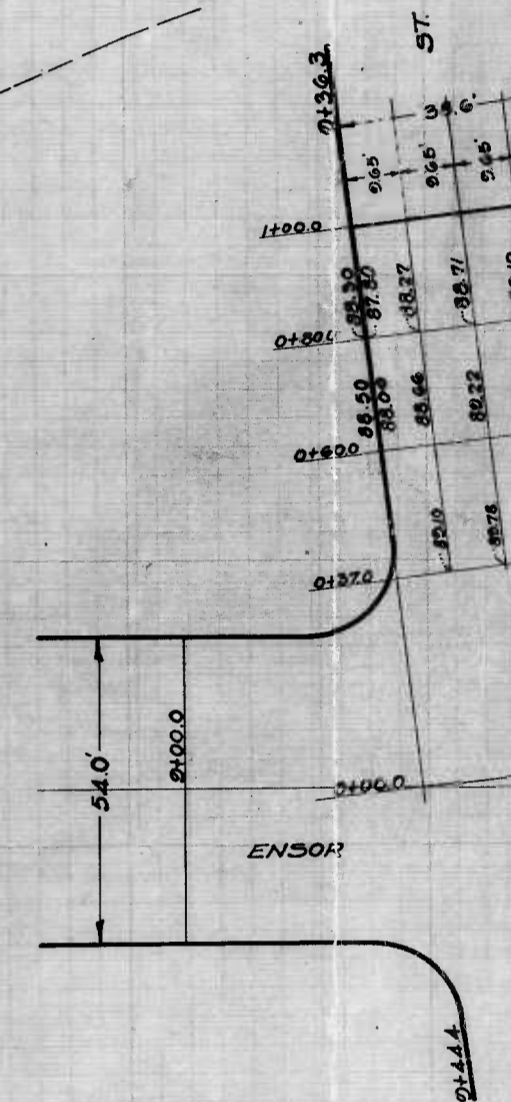
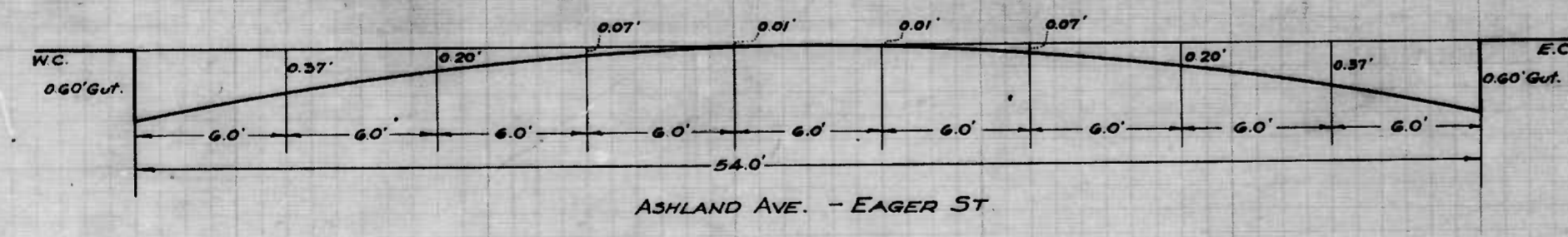
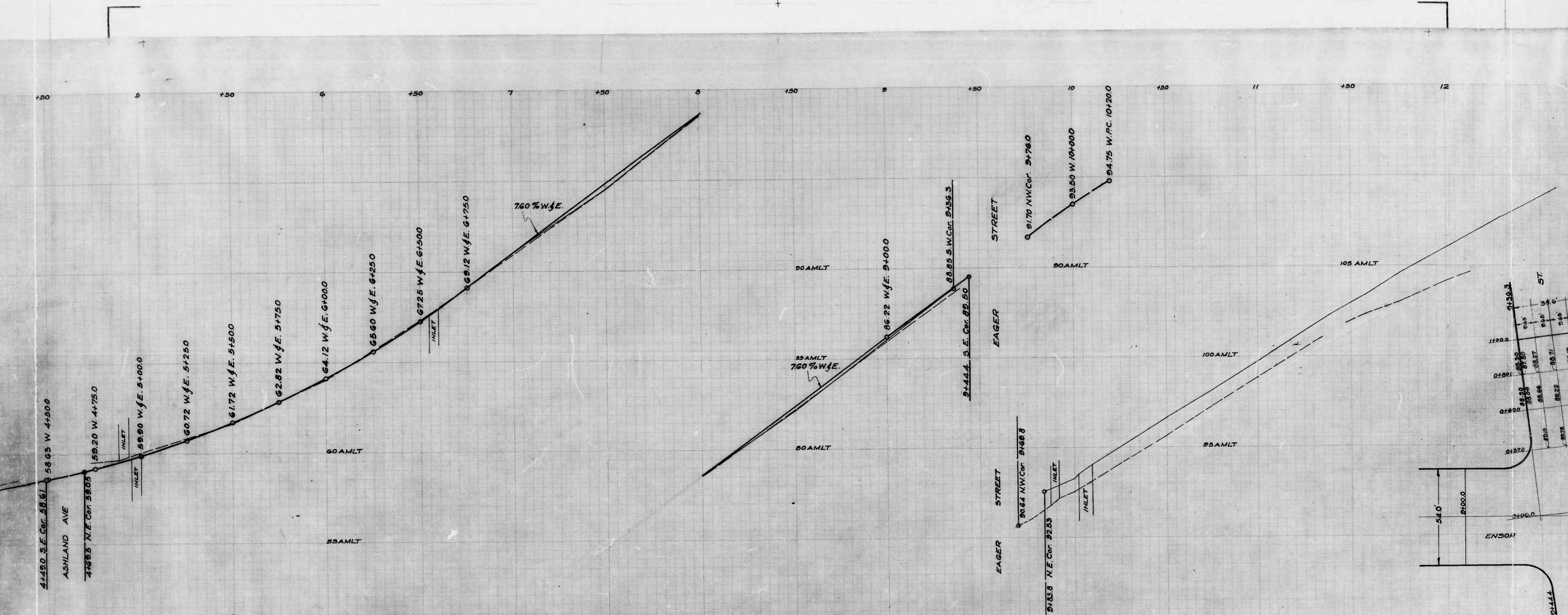
END OF ALL DIVISION 21 - 100.0' W. OF EDGES 21
 CONVI No 136
 530' E. OF



Wm. H. Cressell
 Hesterberg
 ENGINEER IN CHARGE OF DISTRICT

sheet 1

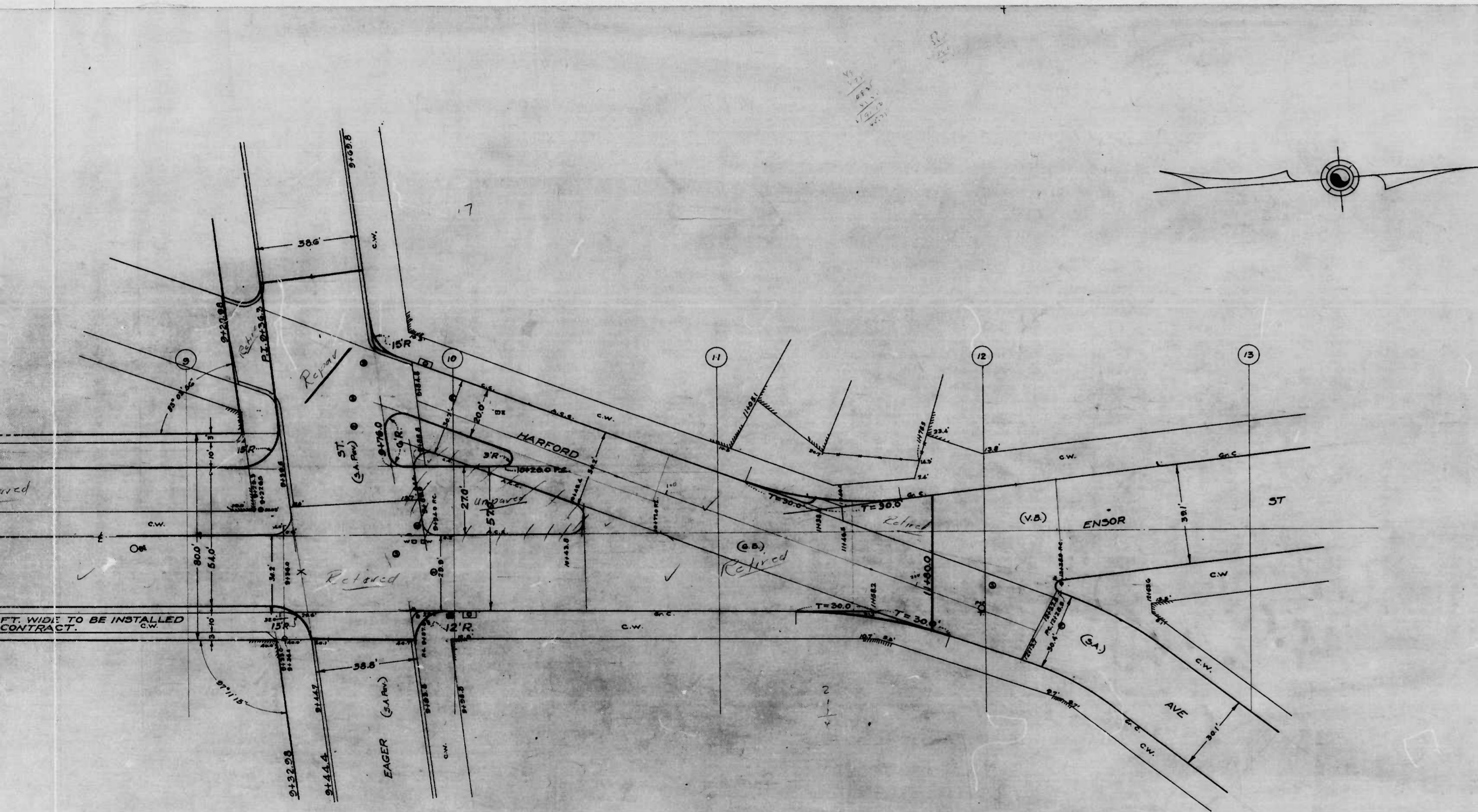




CITY OF BALTIMORE
 DEPARTMENT OF PUBLIC WORKS
 BUREAU OF HIGHWAYS
 PROFILE OF
 ENSOR ST. - MADISON ST. - 180
 SCALE: HOR. 1" = 20'
 VER. 1" = 20'
 CONT NO 726

CORRECT
Edmund J. Neuberger
 ASSOCIATE ENGINEER
 APPROVED
Edmund J. Neuberger
 ENGR. PLANS & SURVEYS

sheet 2



FT. WIDE TO BE INSTALLED CONTRACT.

CITY OF BALTIMORE
 DEPARTMENT OF PUBLIC WORKS
 BUREAU OF HIGHWAYS
 PLAN C7
 ENSOR ST. - MADISON ST. - 180' ± N. OF EAGER ST.
 SCALE - 1" = 20.0' BOOK N° X - 132.
 CONT. N° 726 DATE: JUNE 17, 1940.

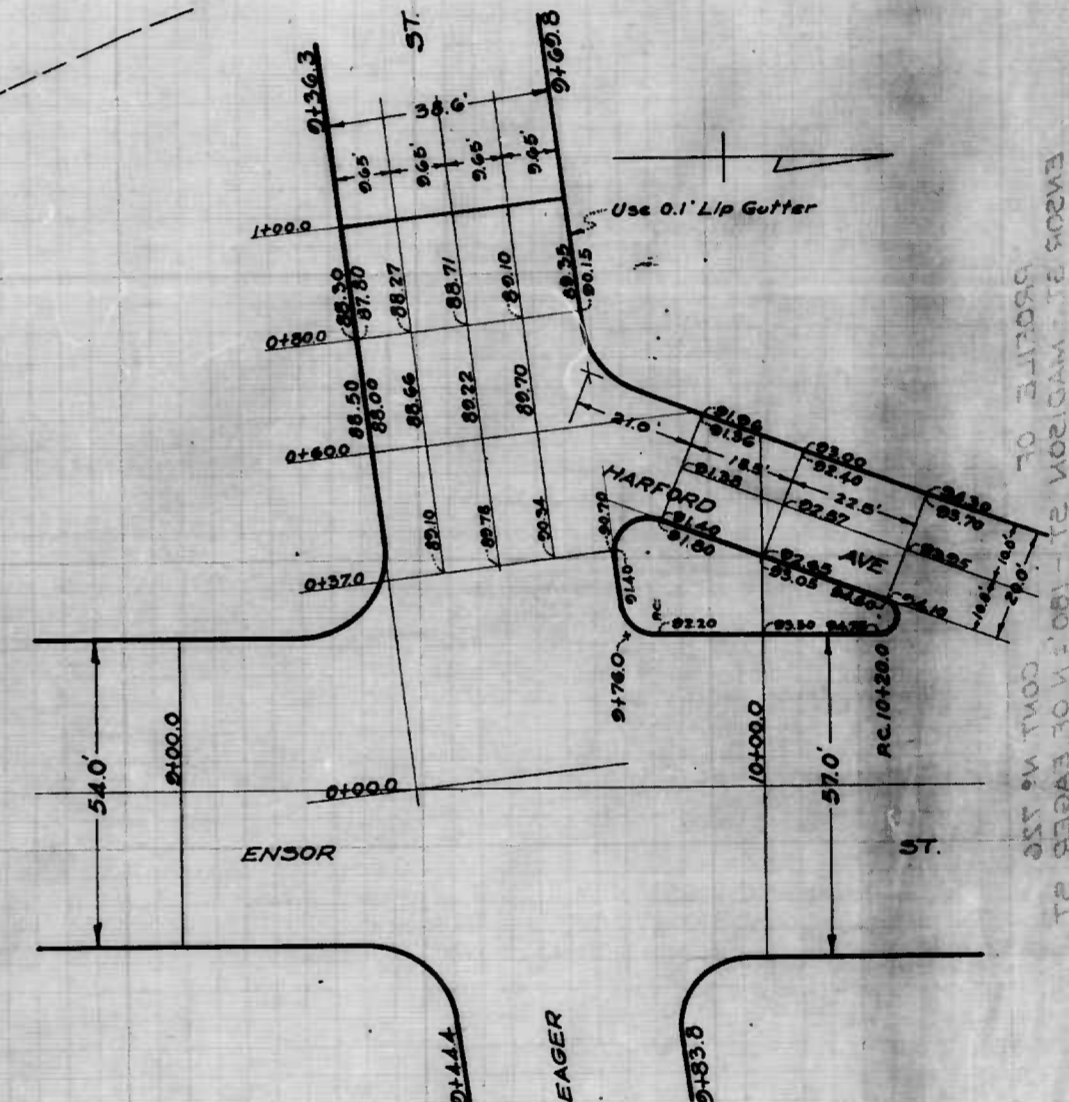
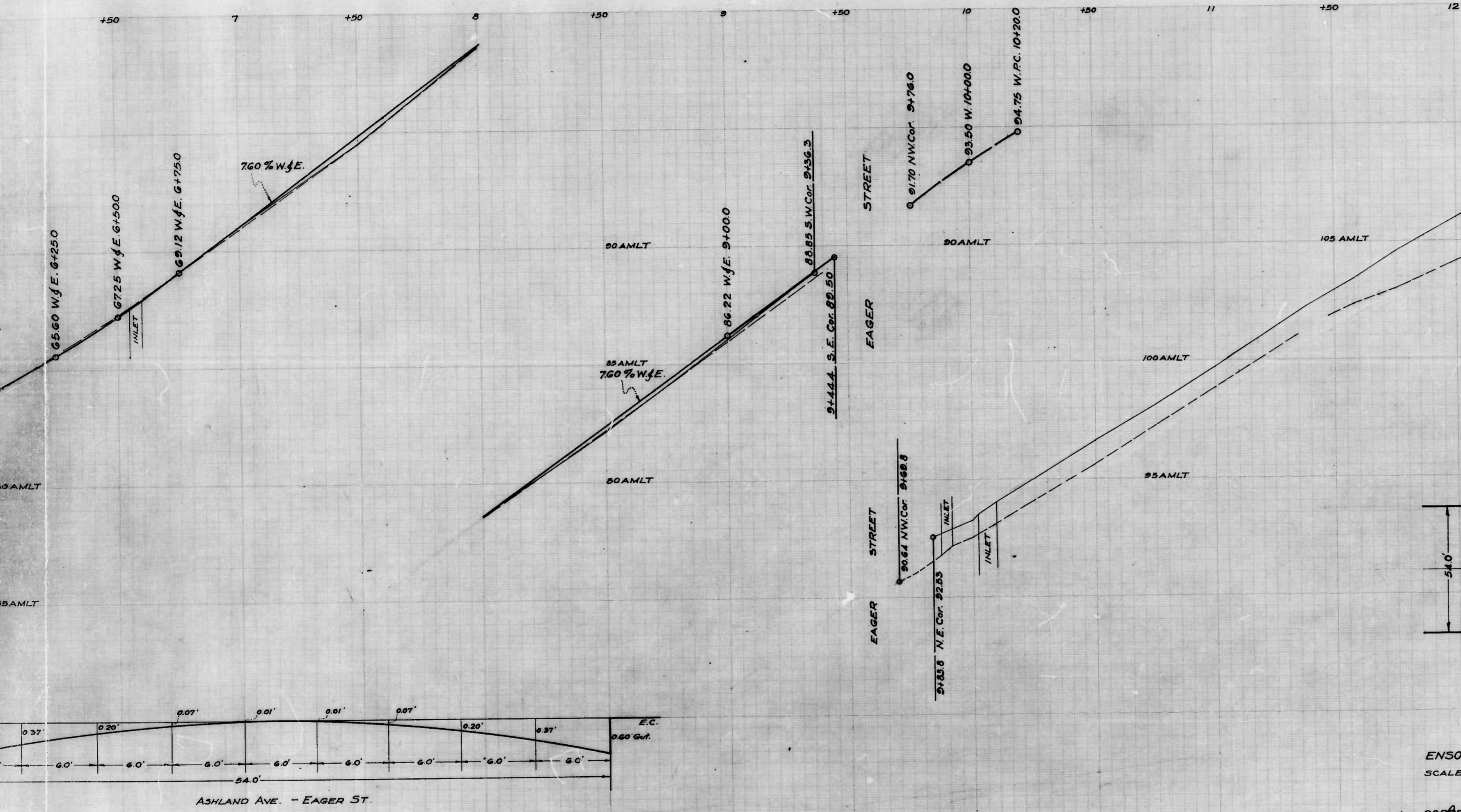
Edw. J. Sapping
 ASSOCIATE ENGINEER
 APPROVED

Samuel A. Smith
 HIGHWAYS ENGINEER
 APPROVED

Edward J. Hedden
 ENGR. PLANS & SURVEYS

George Coll
 CHIEF ENGINEER

shot 3

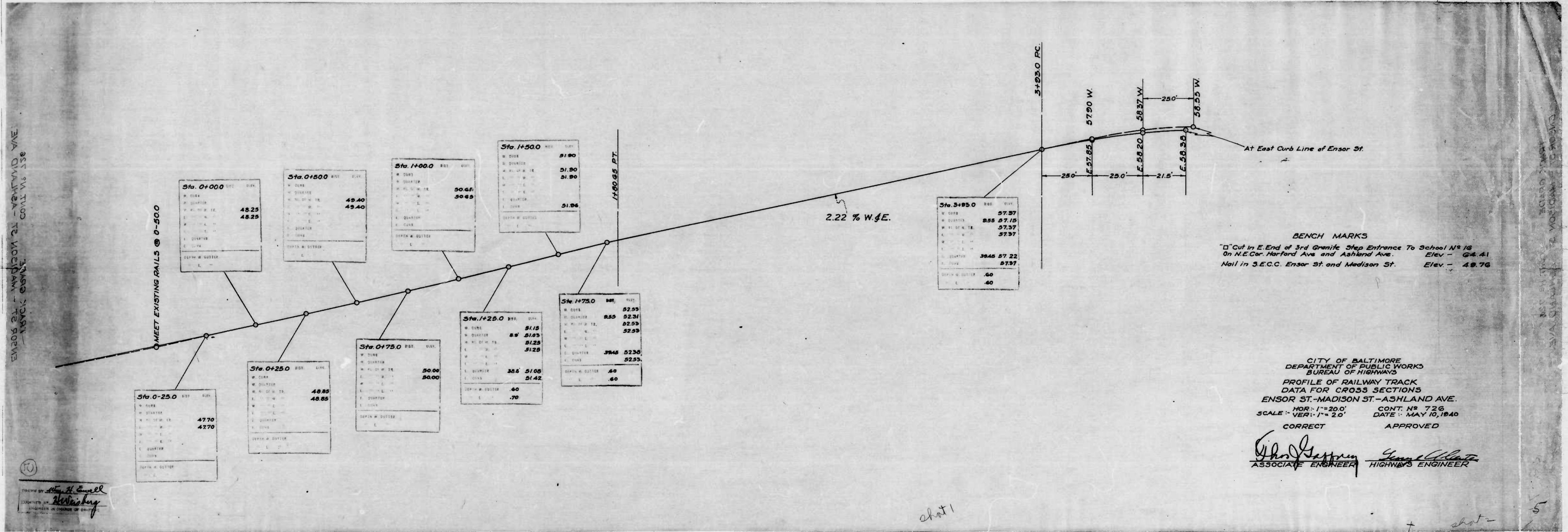


CITY OF BALTIMORE
 DEPARTMENT OF PUBLIC WORKS
 BUREAU OF HIGHWAYS
 PROFILE OF
 ENSOR ST. - MADISON ST. - 180' ± N. OF EAGER ST.
 HOR. 1" = 200' BOOK NO. X-132
 SCALE: VER. 1" = 20' DATE: JUNE 18, 1940
 CONT. NO. 726

CORRECT
Edmund J. Macken
 ASSOCIATE ENGINEER
 APPROVED
 ENGR. PLANS & SURVEYS

APPROVED
Henry White
 HIGHWAYS ENGINEER
 APPROVED
George Colt
 CHIEF ENGINEER

+ sheet 3



EM 205 ST. - MADISON ST. - ASHLAND AVE
 15' X 10' CROSS SECTION
 COLL. V.S. 1.38

EM 205 ST. - MADISON ST. - ASHLAND AVE
 15' X 10' CROSS SECTION
 COLL. V.S. 1.38

Drawn by *Wm. H. Howell*
 Checked by *W. H. Howell*
 Engineer in Charge of Dist.

shot 1

shot 2

5