

Sta. 1+00	
DIST.	ELEV.
S. CURB	37.08
S. QUARTER	6.1' 36.64
S. N.E. COR.	36.78
S. " " " "	36.81
S. " " " "	36.85
S. QUARTER	33.5' 36.68
S. CURB	36.88
DEPTH S. BUTTER	.60'
" " "	.60'

Sta. 1+50	
DIST.	ELEV.
S. CURB	36.00
S. QUARTER	6.1' 35.61
S. N.E. COR.	35.71
S. " " " "	35.71
S. " " " "	35.71
S. QUARTER	33.5' 35.52
S. CURB	35.83
DEPTH S. BUTTER	.60'
" " "	.60'

Sta. 2+75	
DIST.	ELEV.
S. CURB	
S. QUARTER	
S. N.E. COR.	32.87
S. " " " "	32.87
S. " " " "	32.87
S. QUARTER	
S. CURB	
DEPTH S. BUTTER	
" " "	

Sta. 3+50	
DIST.	ELEV.
S. CURB	31.04
S. QUARTER	6.0' 30.71
S. N.E. COR.	30.90
S. " " " "	31.02
S. " " " "	31.10
S. QUARTER	33.5' 31.05
S. CURB	31.48
DEPTH S. BUTTER	.60'
" " "	.60'

Sta. 4+00	
DIST.	ELEV.
S. CURB	
S. QUARTER	
S. N.E. COR.	28.70
S. " " " "	28.78
S. " " " "	29.04
S. QUARTER	
S. CURB	
DEPTH S. BUTTER	
" " "	

Sta. 4+50	
DIST.	ELEV.
S. CURB	28.00
S. QUARTER	5.6' 28.63
S. N.E. COR.	28.00
S. " " " "	28.00
S. " " " "	28.53
S. QUARTER	32.75' 29.08
S. CURB	29.29
DEPTH S. BUTTER	.50'
" " "	.60'

Sta. 3+00	
DIST.	ELEV.
S. CURB	32.63
S. QUARTER	6.05' 32.17
S. N.E. COR.	32.25
S. " " " "	32.27
S. " " " "	32.28
S. QUARTER	33.5' 32.28
S. CURB	32.66
DEPTH S. BUTTER	.60'
" " "	.60'

Sta. 3+25	
DIST.	ELEV.
S. CURB	
S. QUARTER	
S. N.E. COR.	31.60
S. " " " "	31.64
S. " " " "	31.66
S. QUARTER	
S. CURB	
DEPTH S. BUTTER	
" " "	

Sta. 3+75	
DIST.	ELEV.
S. CURB	
S. QUARTER	
S. N.E. COR.	30.27
S. " " " "	30.36
S. " " " "	30.41
S. QUARTER	
S. CURB	
DEPTH S. BUTTER	
" " "	

Sta. 4+25	
DIST.	ELEV.
S. CURB	
S. QUARTER	
S. N.E. COR.	29.25
S. " " " "	29.33
S. " " " "	29.37
S. QUARTER	
S. CURB	
DEPTH S. BUTTER	
" " "	

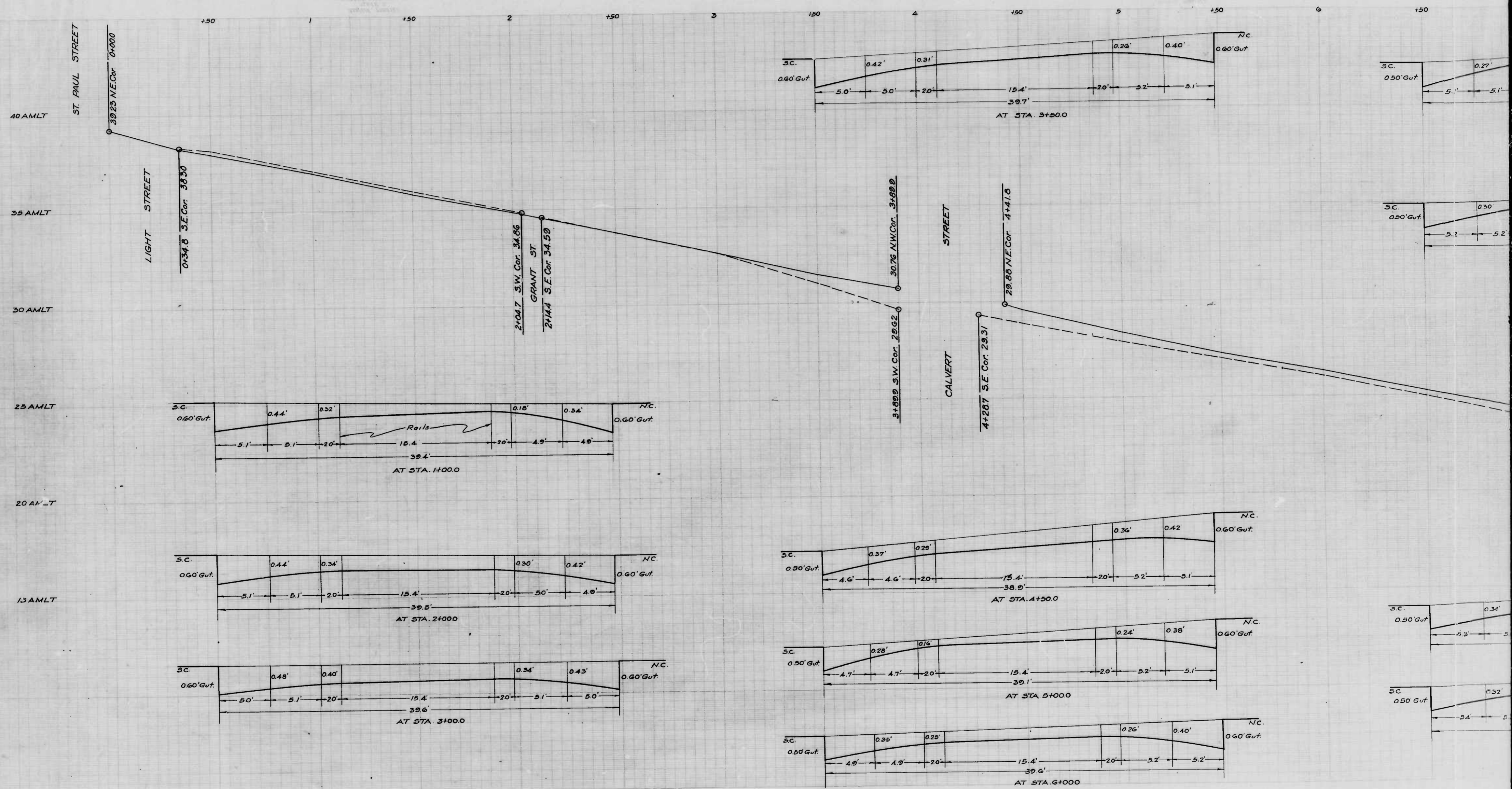
Sta. 5+00	
DIST.	ELEV.
S. CURB	27.89
S. QUARTER	5.7' 27.70
S. N.E. COR.	27.90
S. " " " "	27.94
S. " " " "	27.96
S. QUARTER	32.95' 27.97
S. CURB	28.39
DEPTH S. BUTTER	.50'
" " "	.60'

Sta. 7+00	
DIST.	ELEV.
S. CURB	
S. QUARTER	6.15'
S. N.E. COR.	
S. " " " "	
S. " " " "	
S. QUARTER	33.85'
S. CURB	
DEPTH S. BUTTER	.50'
" " "	.60'

Sta. 7+	
DIST.	ELEV.
S. CURB	
S. QUARTER	
S. N.E. COR.	
S. " " " "	
S. " " " "	
S. QUARTER	
S. CURB	
DEPTH S. BUTTER	
" " "	

DRAWN BY: *Wm. H. Connel*
 CHECKED BY: *H. H. Hildebrand*
 ENGINEER IN CHARGE OF DRAWING

Sheet 1

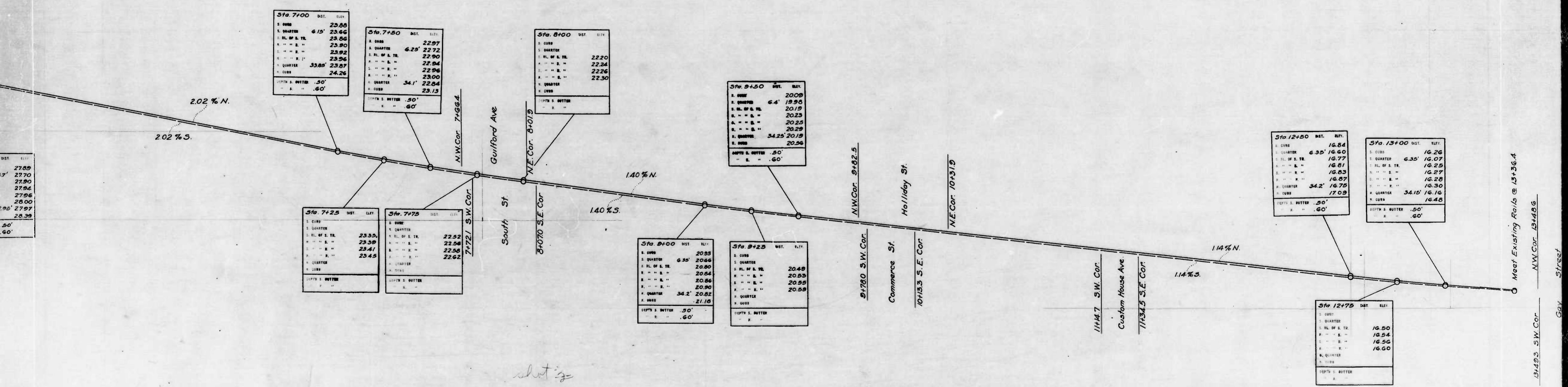


REPRODUCED FROM ORIGINAL DRAWING

W. H. Gull
 H. W. Hensley

short

BENCH MARKS
S.W. Cor. Step St. Paul St. Entrance To Union Trust Co. Elev. - 42.78.
Standard Marker: No. 2 On S.E. Cor. Fayette St. & Gay St. Elev. - 17.90.



Sta. 7+00	DIST.	ELEV.
S. CURB		23.68
S. QUARTER	6.15'	23.66
S. RL. OF S. TR.		23.90
S. " " " "		23.92
S. " " " "		23.96
S. QUARTER	33.85'	23.87
S. CURB		24.26
DEPTH S. BUTTER	.50'	
" " "	.60'	

Sta. 7+50	DIST.	ELEV.
S. CURB		22.97
S. QUARTER	6.25'	22.72
S. RL. OF S. TR.		22.90
S. " " " "		22.94
S. " " " "		22.96
S. QUARTER	34.1'	22.84
S. CURB		23.13
DEPTH S. BUTTER	.50'	
" " "	.60'	

Sta. 8+00	DIST.	ELEV.
S. CURB		22.20
S. QUARTER		22.24
S. RL. OF S. TR.		22.26
S. " " " "		22.26
S. " " " "		22.30
S. QUARTER		22.30
S. CURB		22.30
DEPTH S. BUTTER		
" " "		

Sta. 9+50	DIST.	ELEV.
S. CURB		20.09
S. QUARTER	6.4'	19.98
S. RL. OF S. TR.		20.19
S. " " " "		20.23
S. " " " "		20.23
S. QUARTER	34.25'	20.19
S. CURB		20.34
DEPTH S. BUTTER	.50'	
" " "	.60'	

Sta. 12+50	DIST.	ELEV.
S. CURB		16.84
S. QUARTER	6.35'	16.40
S. RL. OF S. TR.		16.77
S. " " " "		16.81
S. " " " "		16.83
S. QUARTER	34.2'	16.75
S. CURB		17.09
DEPTH S. BUTTER	.50'	
" " "	.60'	

Sta. 13+00	DIST.	ELEV.
S. CURB		16.26
S. QUARTER	6.35'	16.07
S. RL. OF S. TR.		16.25
S. " " " "		16.27
S. " " " "		16.28
S. QUARTER	34.15'	16.16
S. CURB		16.48
DEPTH S. BUTTER	.50'	
" " "	.60'	

Sta. 7+25	DIST.	ELEV.
S. CURB		20.85
S. QUARTER		20.66
S. RL. OF S. TR.		20.60
S. " " " "		20.64
S. " " " "		20.86
S. QUARTER		20.90
S. CURB		21.18
DEPTH S. BUTTER	.50'	
" " "	.60'	

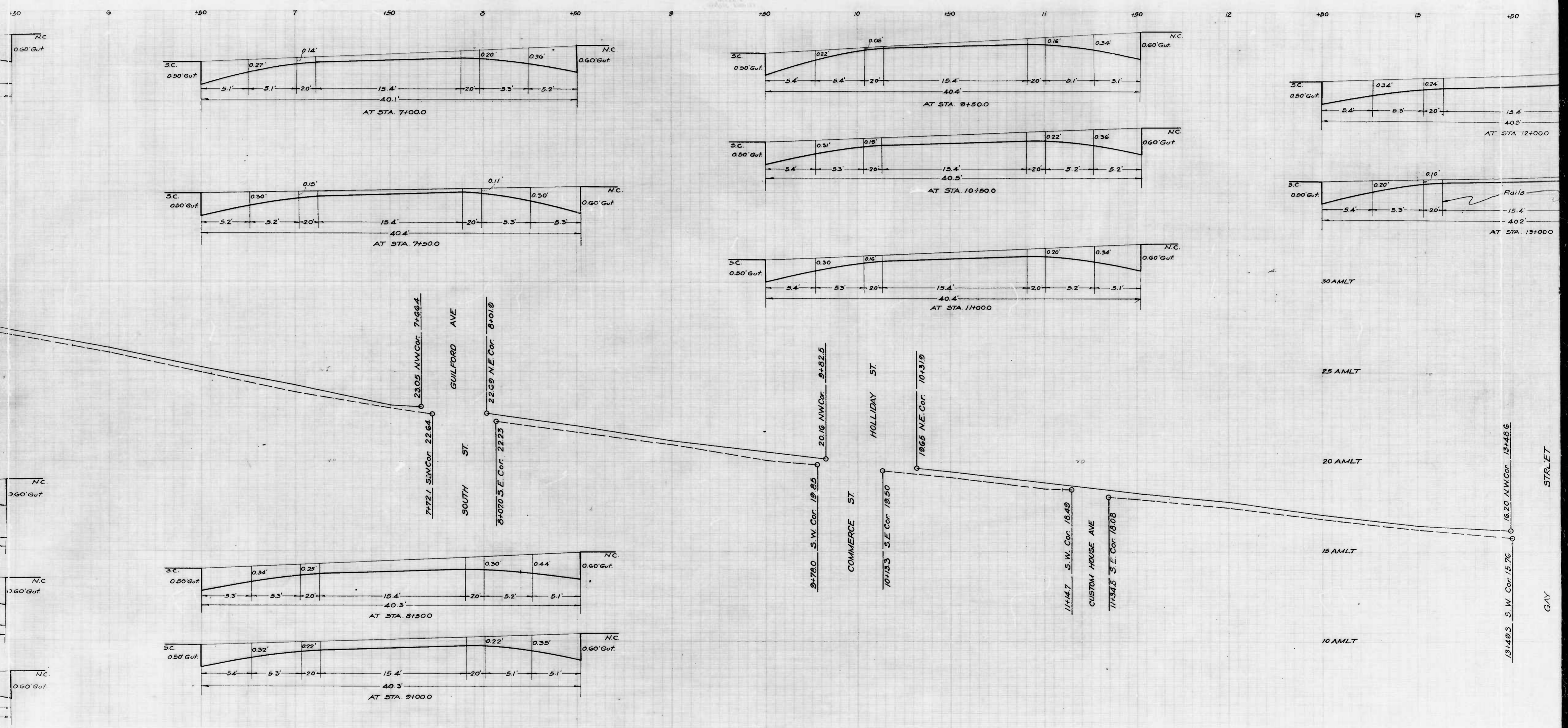
Sta. 7+75	DIST.	ELEV.
S. CURB		22.52
S. QUARTER		22.56
S. RL. OF S. TR.		22.56
S. " " " "		22.56
S. " " " "		22.62
S. QUARTER		22.62
S. CURB		22.62
DEPTH S. BUTTER		
" " "		

Sta. 8+00	DIST.	ELEV.
S. CURB		20.85
S. QUARTER	6.35'	20.66
S. RL. OF S. TR.		20.60
S. " " " "		20.64
S. " " " "		20.86
S. QUARTER	34.2'	20.82
S. CURB		21.18
DEPTH S. BUTTER	.50'	
" " "	.60'	

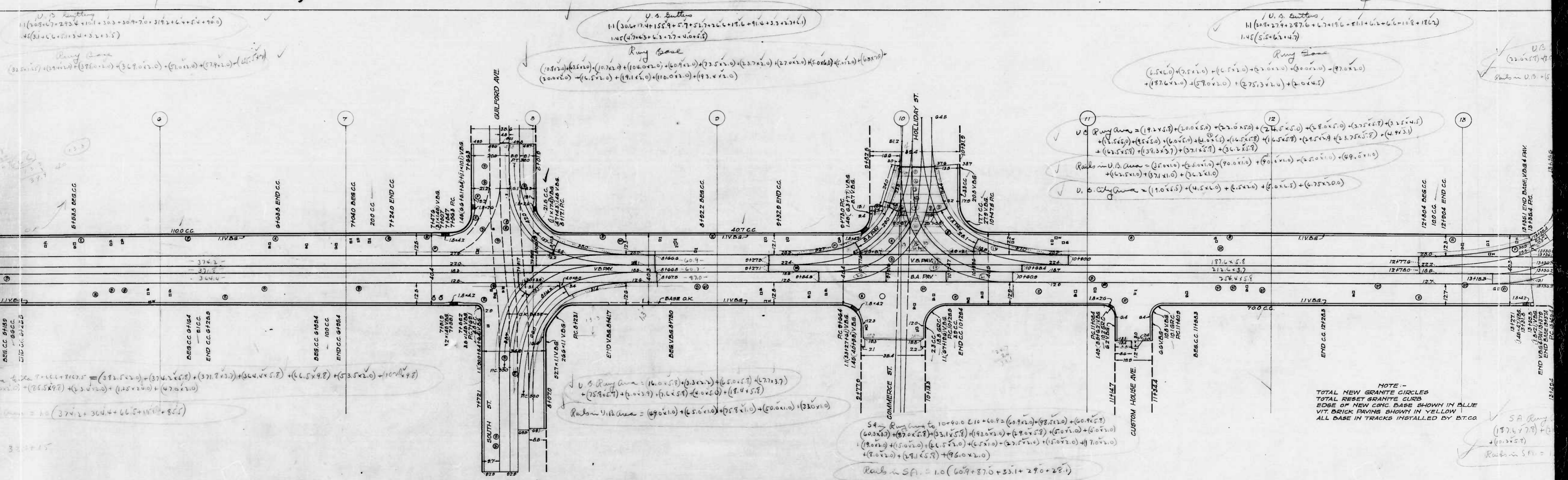
Sta. 9+25	DIST.	ELEV.
S. CURB		20.49
S. QUARTER		20.53
S. RL. OF S. TR.		20.53
S. " " " "		20.55
S. " " " "		20.55
S. QUARTER		20.59
S. CURB		20.59
DEPTH S. BUTTER		
" " "		

Sta. 12+75	DIST.	ELEV.
S. CURB		16.50
S. QUARTER		16.54
S. RL. OF S. TR.		16.56
S. " " " "		16.56
S. " " " "		16.60
S. QUARTER		16.60
S. CURB		16.60
DEPTH S. BUTTER		
" " "		

short



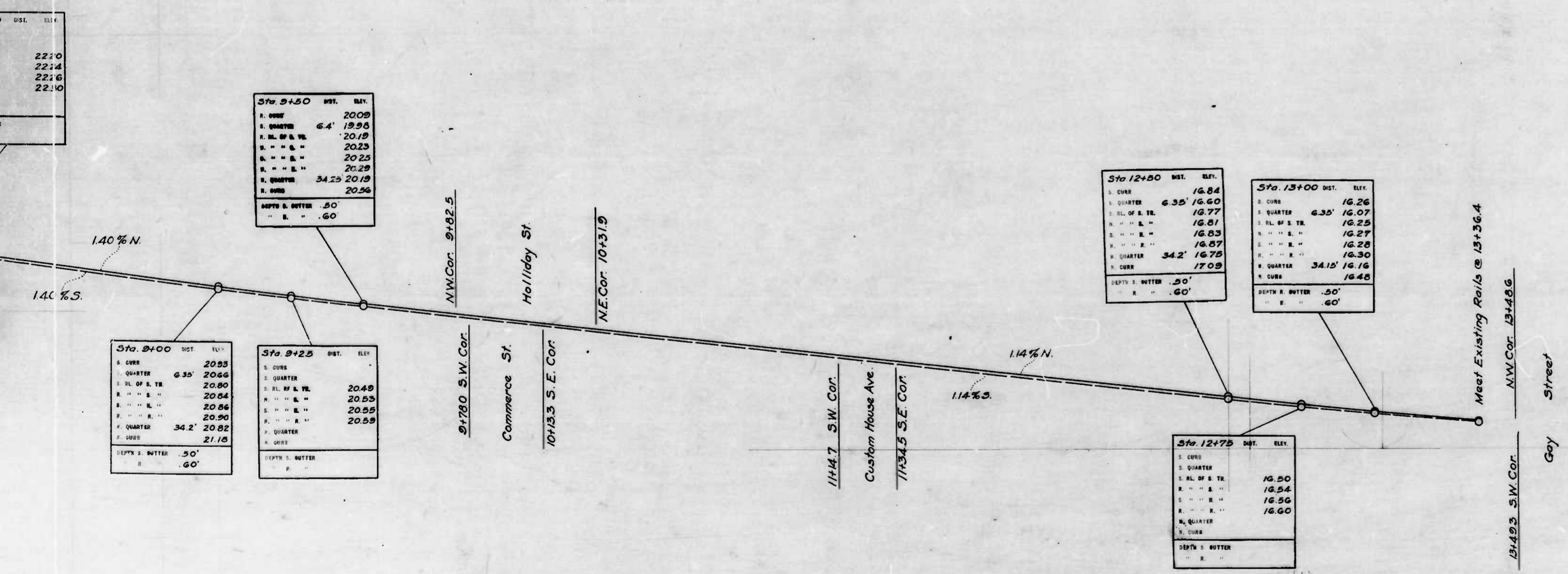
Plot 2



U.S. Routes
(22.0 x 5.7) + ...
Rwy Base U.S. - 15

SA Rwy
(187.4 x 7.8) + ...
Rwy SA =

BENCH MARKS
 SW Cor 31st St Paul St Entrance To Union Trust Co. Elev - 42.78.
 Standard Marker No. 2 On S.E. Cor Fayette St & Gay St. Elev - 17.90.

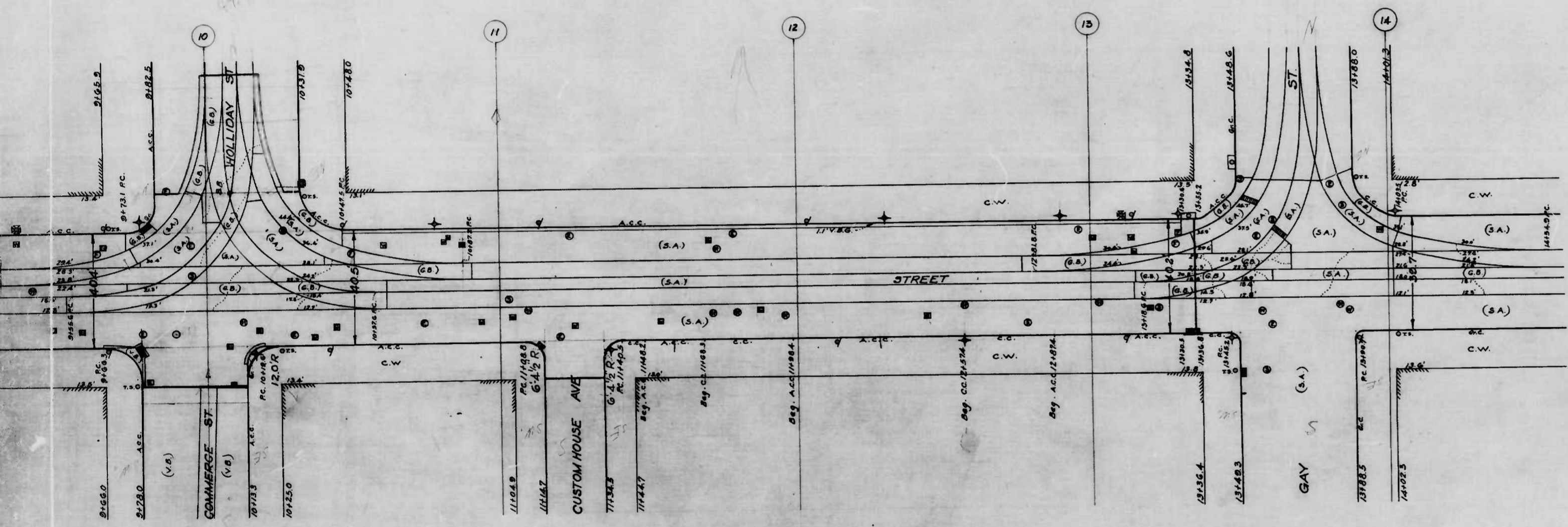


CITY OF BALTIMORE
 DEPARTMENT OF PUBLIC WORKS
 BUREAU OF HIGHWAYS
 PROFILE OF RAILWAY TRACKS
 DATA FOR CROSS SECTIONS
 BALTIMORE ST - LIGHT ST - GAY ST.
 SCALE - HOR: 1" = 200' CONT. NO. 725
 SCALE - VER: 1" = 20' DATE - MAY 13, 1940

CORRECT APPROVED
John J. ... *...*
 ASSOCIATE ENGINEER HIGHWAYS ENGINEER

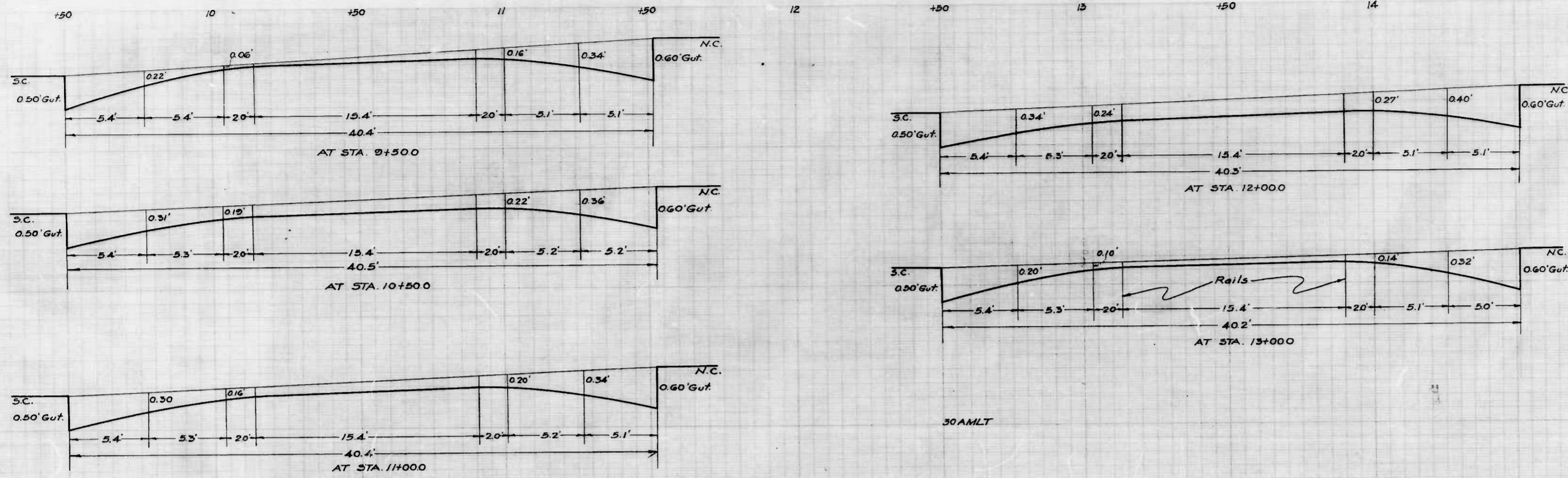
Sheet 3

1031.9
982.5
49.4



CITY OF BALTIMORE
 DEPARTMENT OF PUBLIC WORKS
 BUREAU OF HIGHWAYS
 PLAN OF
 BALTIMORE ST.-LIGHT ST.-GAY ST.
 SCALE: 1" = 20.0' DATE: MAY 10, 1940.
 CONT. NO. 725 BOOK NO. 114
 CORRECT APPROVED
John H. ... *John P. ...*
 ASSOCIATE ENGINEER HIGHWAYS ENGINEER
 APPROVED APPROVED
Edward ... *James ...*
 ENGR. PLANS & SURVEYS CHIEF ENGINEER

sheet 3



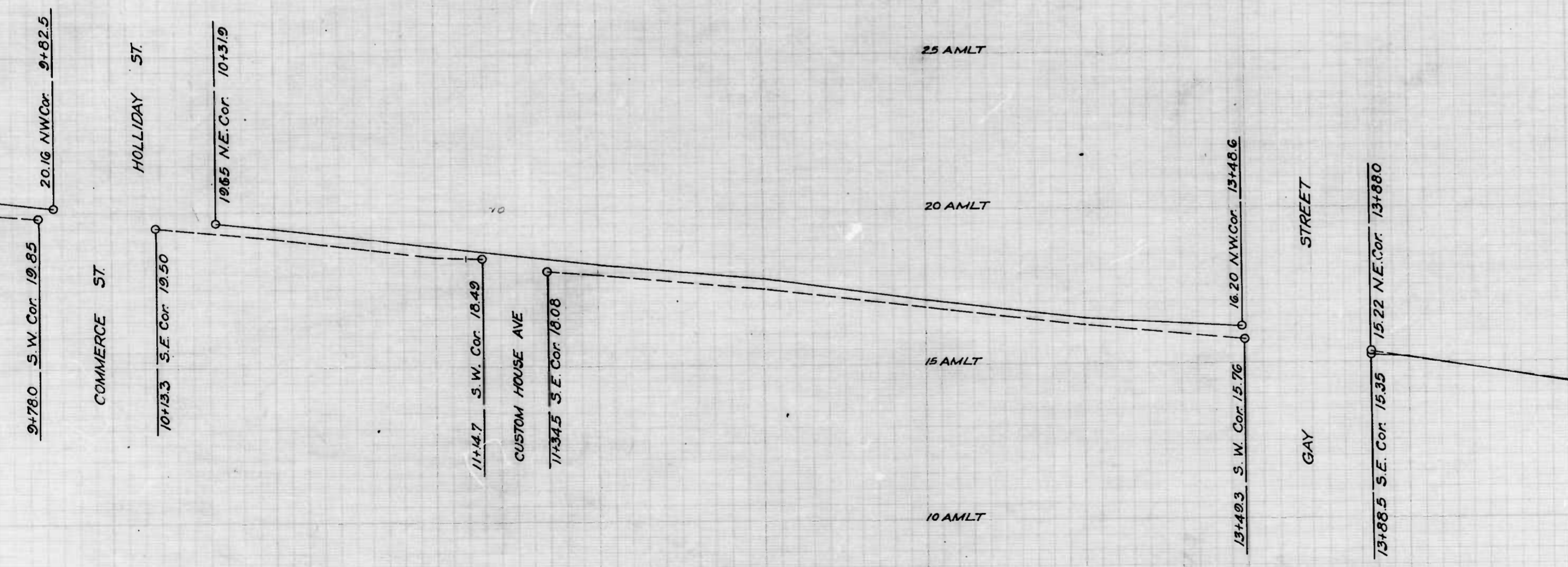
30 AMLT

25 AMLT

20 AMLT

15 AMLT

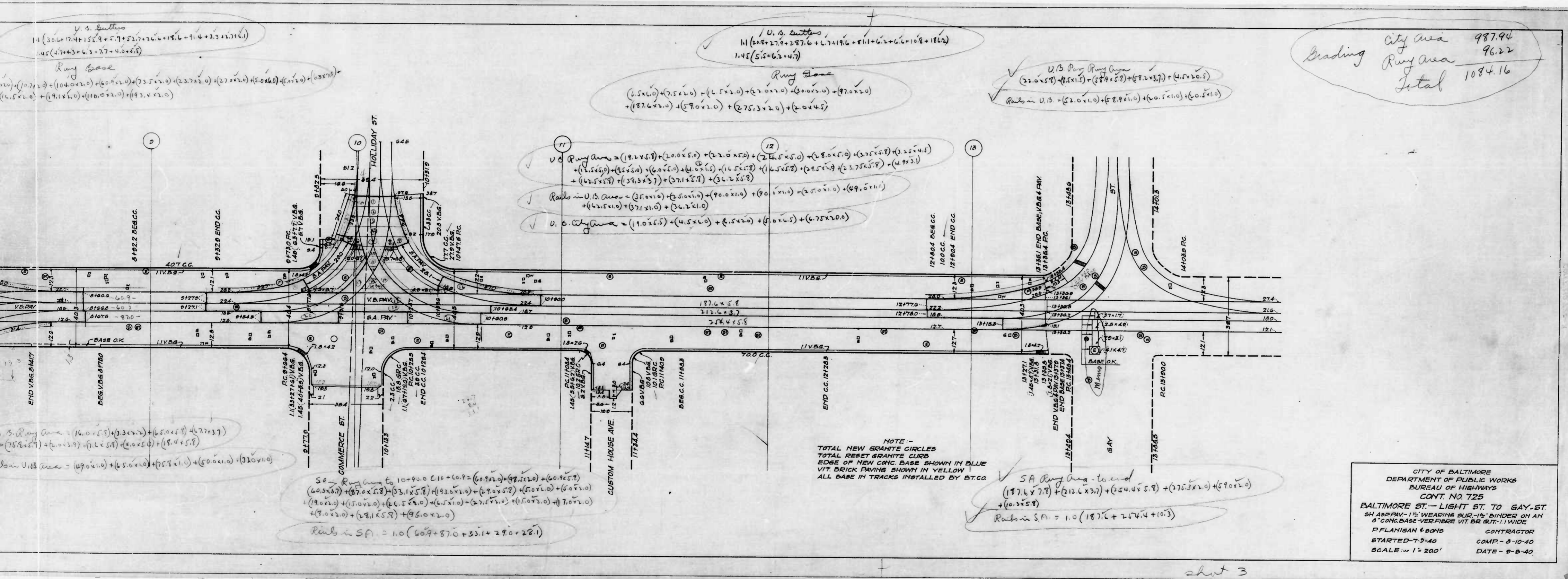
10 AMLT



CITY OF BALTIMORE
 DEPARTMENT OF PUBLIC WORKS
 BUREAU OF HIGHWAYS
 PROFILE OF
 BALTIMORE ST - LIGHT ST - GAY ST.
 SCALE: HOR. 1" = 200' BOOK N° X-114
 VER. 1" = 20' DATE: 5-10-40
 CONT. N° 725

CORRECT APPROVED
Edmund J. ...
 ASSOCIATE ENGINEER - HIGHWAYS ENGINEER
 APPROVED APPROVED
Edmund J. ... *James G. ...*
 ENGR. PLANS & SURVEYS CHIEF ENGINEER

Sheet 3



Grading	City Area	987.94
	Rwy Area	96.22
	Total	1084.16

NOTE -
TOTAL NEW GRANITE CIRCLES
TOTAL RESET GRANITE CURB
EDGE OF NEW CONC. BASE SHOWN IN BLUE
VIT. BRICK PAVING SHOWN IN YELLOW
ALL BASE IN TRACKS INSTALLED BY DTCA

CITY OF BALTIMORE
DEPARTMENT OF PUBLIC WORKS
BUREAU OF HIGHWAYS
CONT. NO. 725
BALTIMORE ST. - LIGHT ST. TO GAY ST.
5" ASPHALT - 1" WEARING SURF - 1/2" SAND ON AN
8" CONC. BASE - VER. FIBRE VIT. BR. SUT. - 1" WIDE
P. FLAHERTY & SONS CONTRACTOR
STARTED - 7-3-40 COMP. - 8-10-40
SCALE - 1" = 200' DATE - 9-5-40

sheet 3