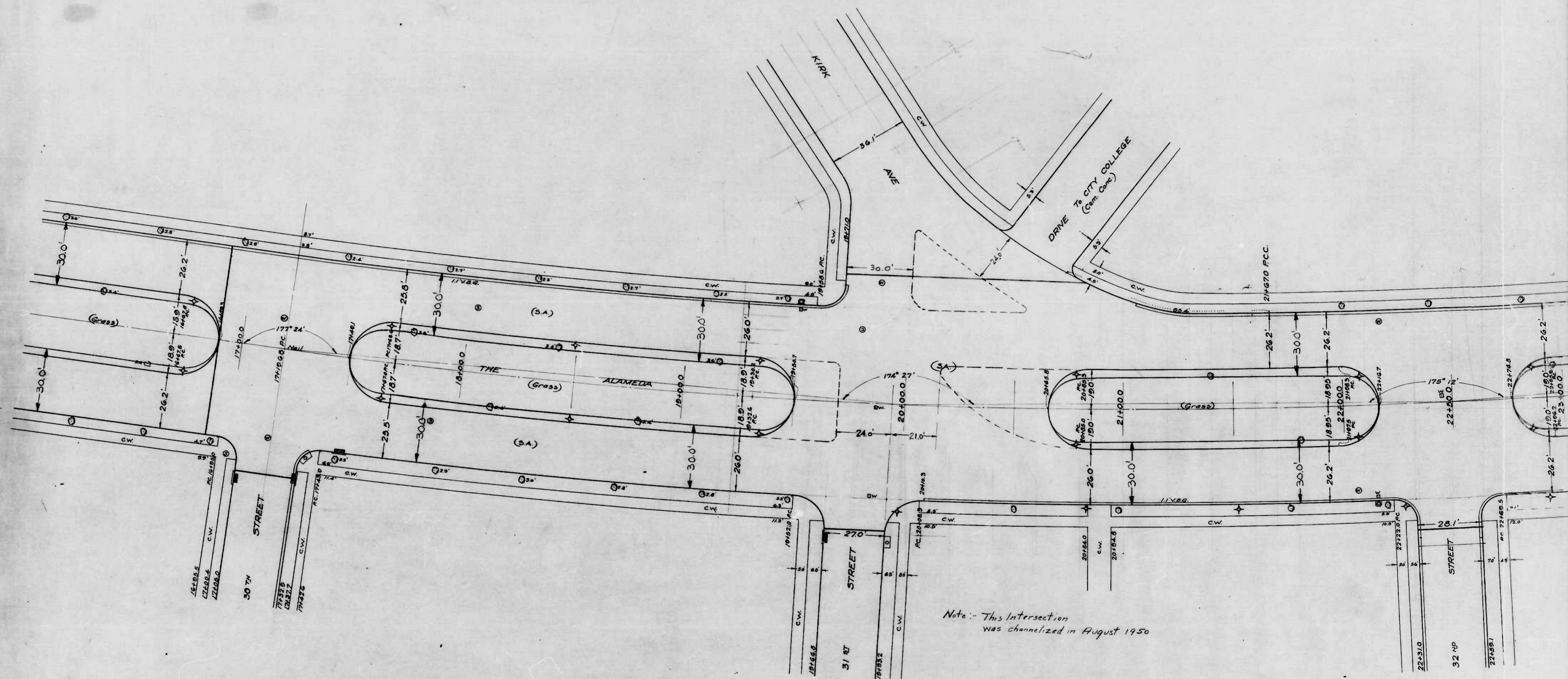


THE CITY OF CHILTON
 580 N.E. OLIVE ST.
 CHILTON, MA

W. H. Burt
 Haverhill
 ENGINEER IN CHARGE OF DESIGN

PR-1

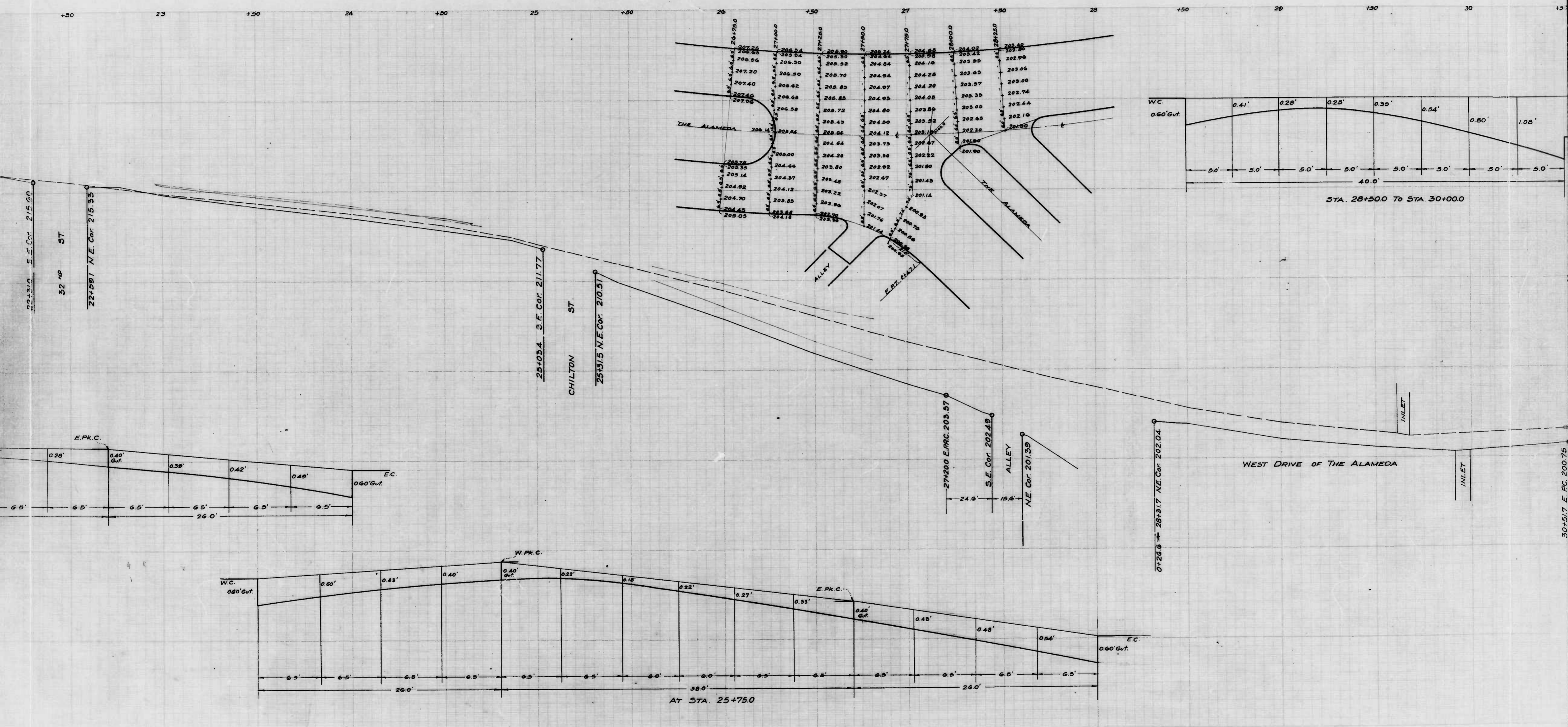


1012
5011
5011

Drawn by: *Wm. H. Emsell*
Halsey
ENGINEER IN CHARGE OF DRAFTING

1053
932
157

201

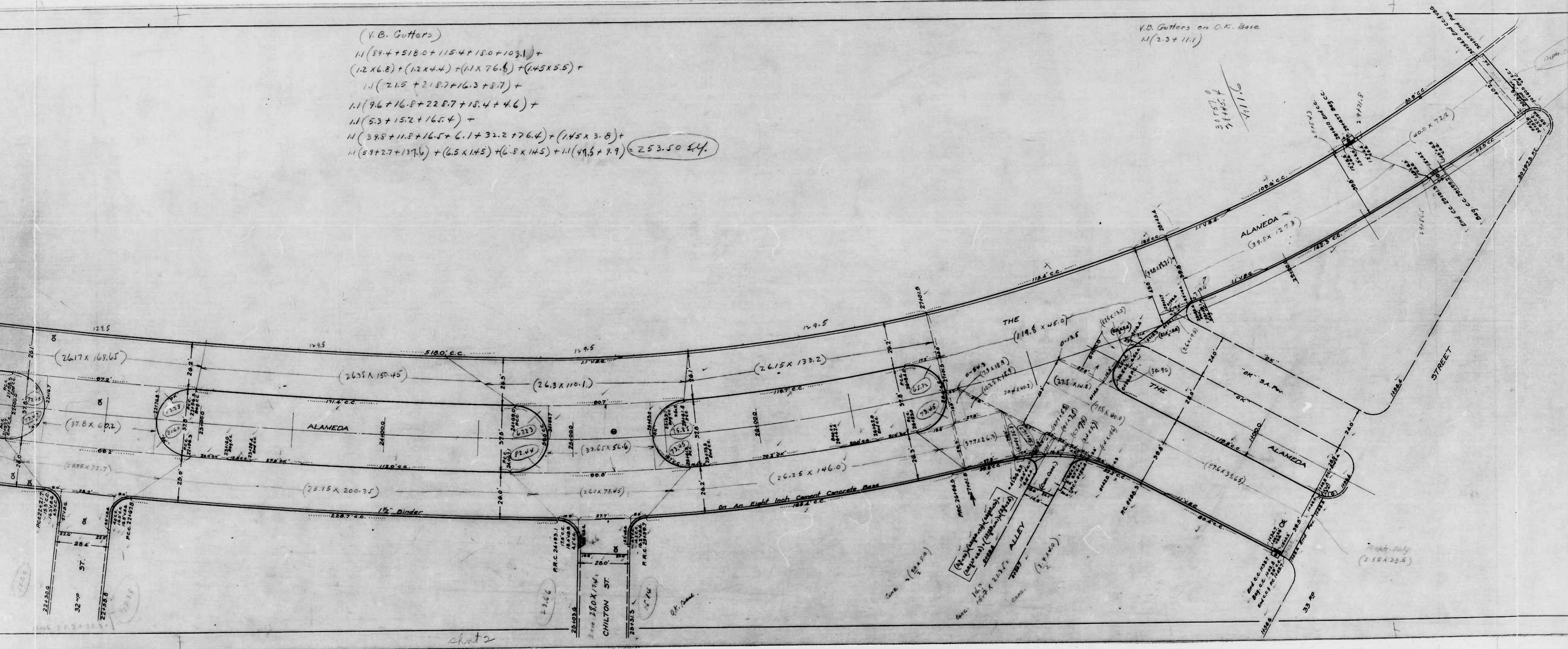


Plot 2

30+51.7 E. PC 200.75

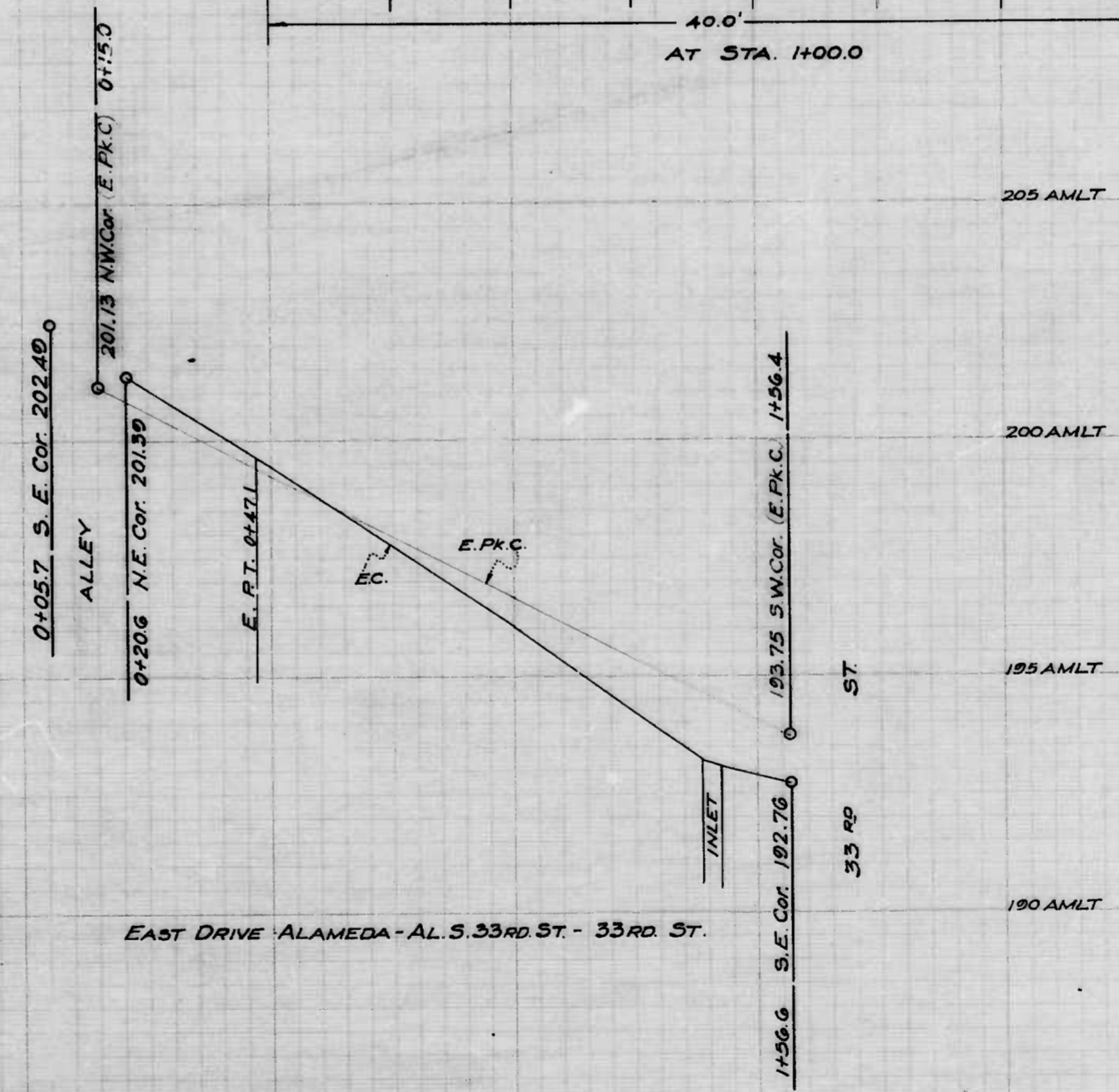
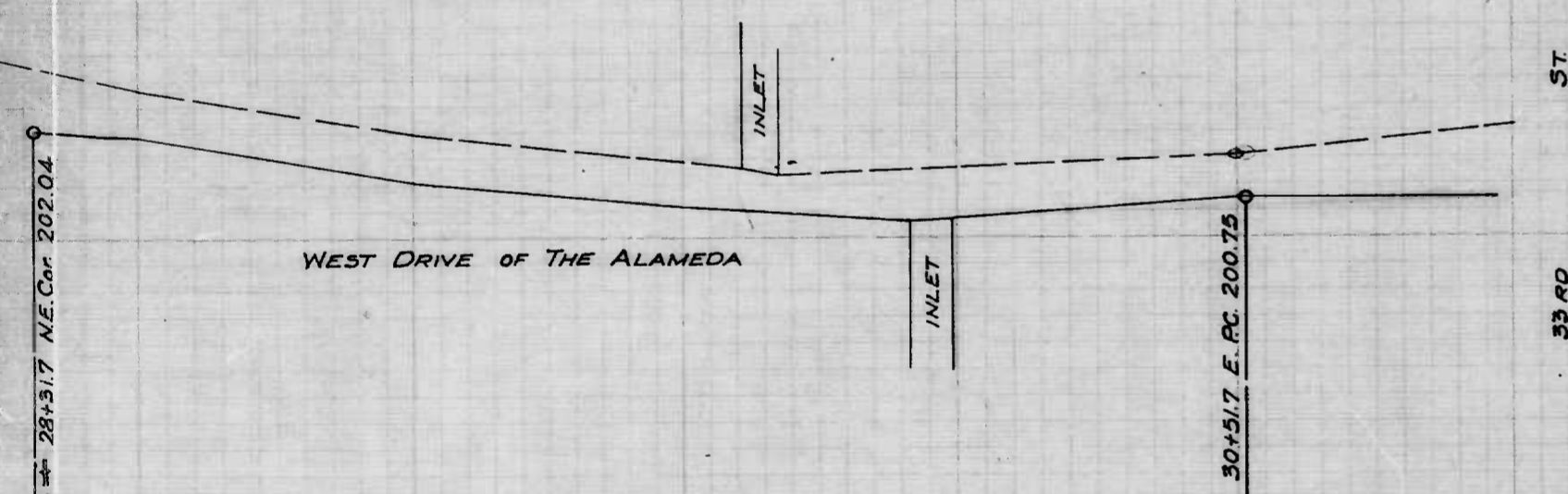
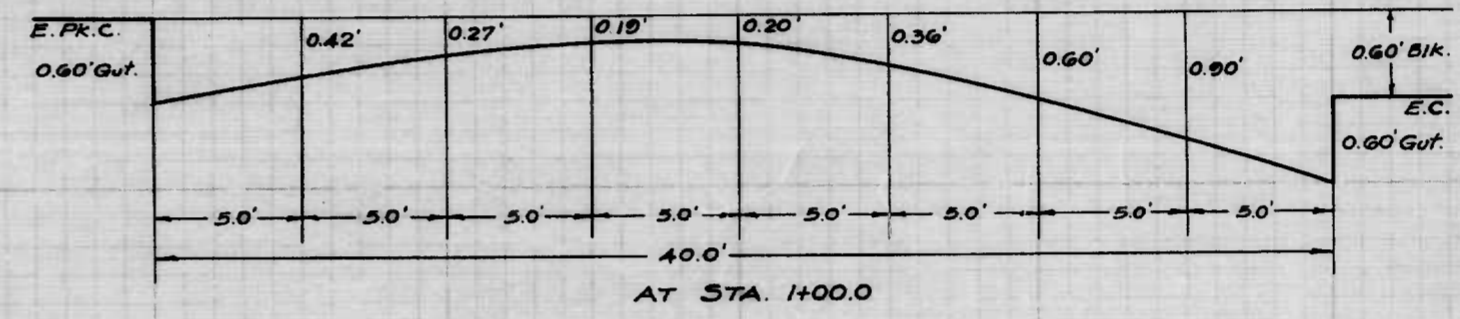
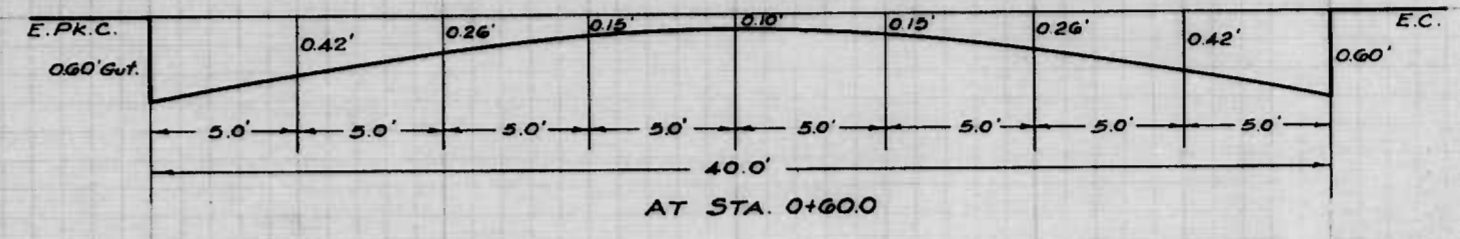
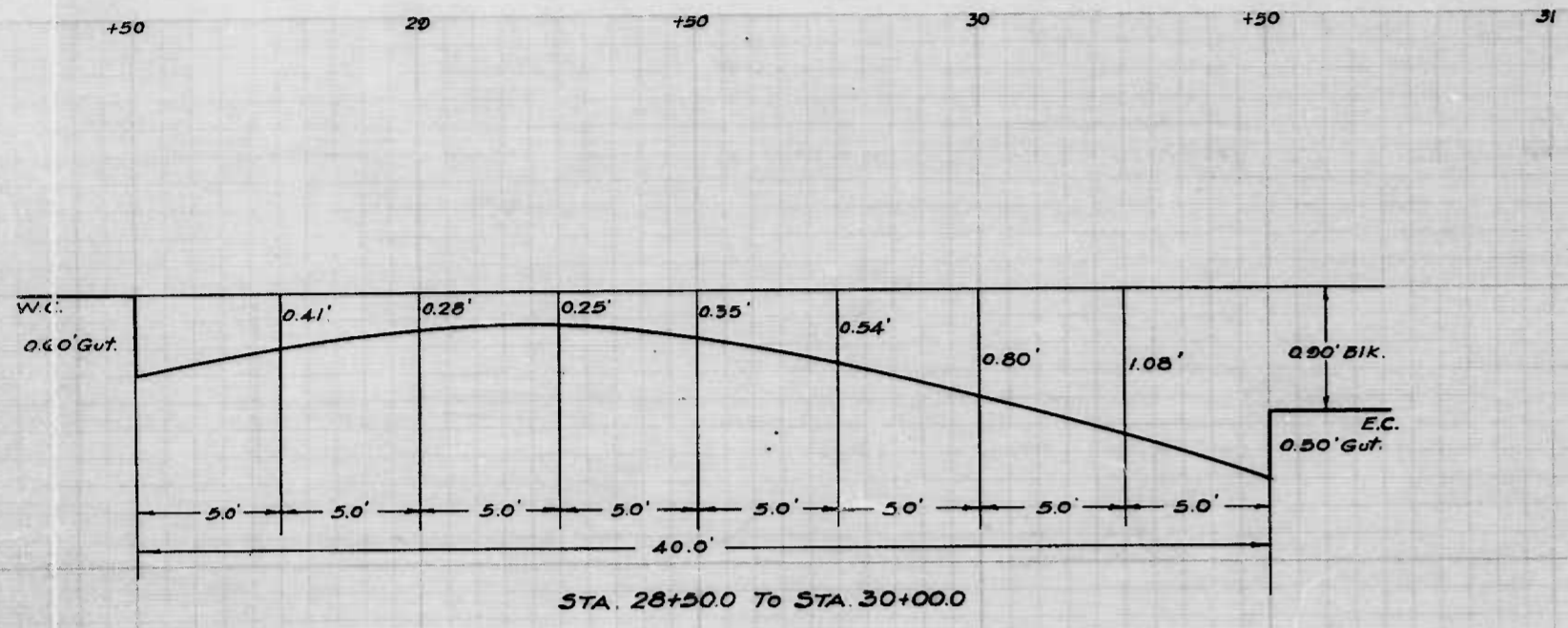
(V.B. Gutters)
 $1.1(59.4+518.0+115.4+18.0+109.1) +$
 $(12 \times 6.8) + (12 \times 4.4) + (11 \times 76.6) + (145 \times 5.5) +$
 $1.1(21.5 + 218.7 + 16.3 + 8.7) +$
 $1.1(9.6 + 16.8 + 228.7 + 18.4 + 4.6) +$
 $1.1(5.3 + 15.2 + 16.4) +$
 $1.1(39.8 + 11.8 + 16.5 + 6.1 + 32.2 + 76.4) + (145 \times 3.8) +$
 $1.1(59 + 2.7 + 177.6) + (6.5 \times 145) + (6.8 \times 145) + 1.1(49.5 + 7.9) = 253.50 \text{ c.c.}$

V.B. Gutters on O.K. Base
 $1.1(2.3 + 11.1)$



chut 2

prob. only
 (255 x 35.5)



CITY OF BALTIMORE
 DEPARTMENT OF PUBLIC WORKS
 BUREAU OF HIGHWAYS

PROFILE OF
 THE ALAMEDA - 30TH ST - 33RD ST.

HOR.: 1" = 20.0' BOOK NO. X-135
 SCALE: VER.: 1" = 20' DATE: MAY 4, 1940
 CONT. NO. 724

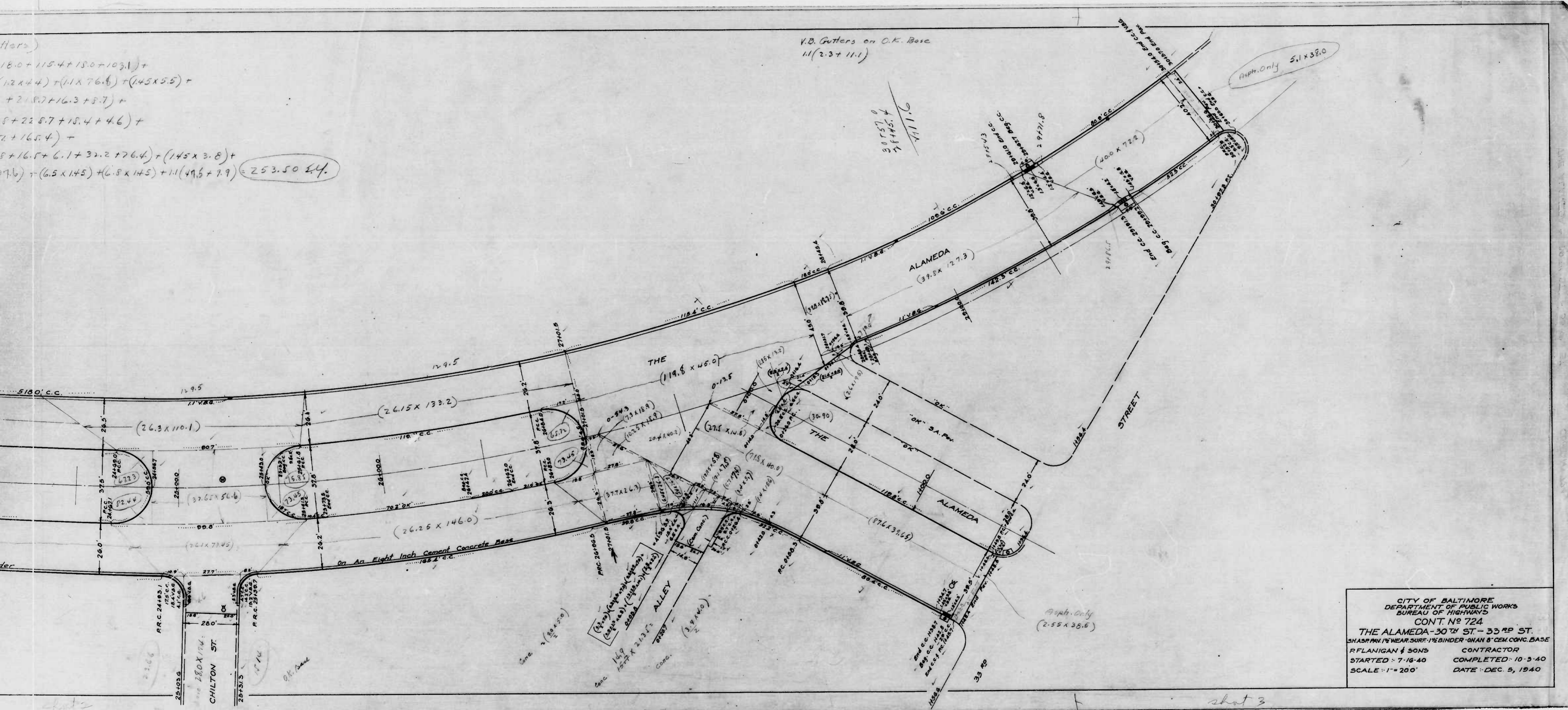
CORRECT APPROVED
John J. Perry *George A. Adams*
 ASSOCIATE ENGINEER HIGHWAYS ENGINEER

APPROVED APPROVED
George A. Adams *George A. Adams*
 ENGR. PLANS & SURVEYS CHIEF ENGINEER

sheet 3

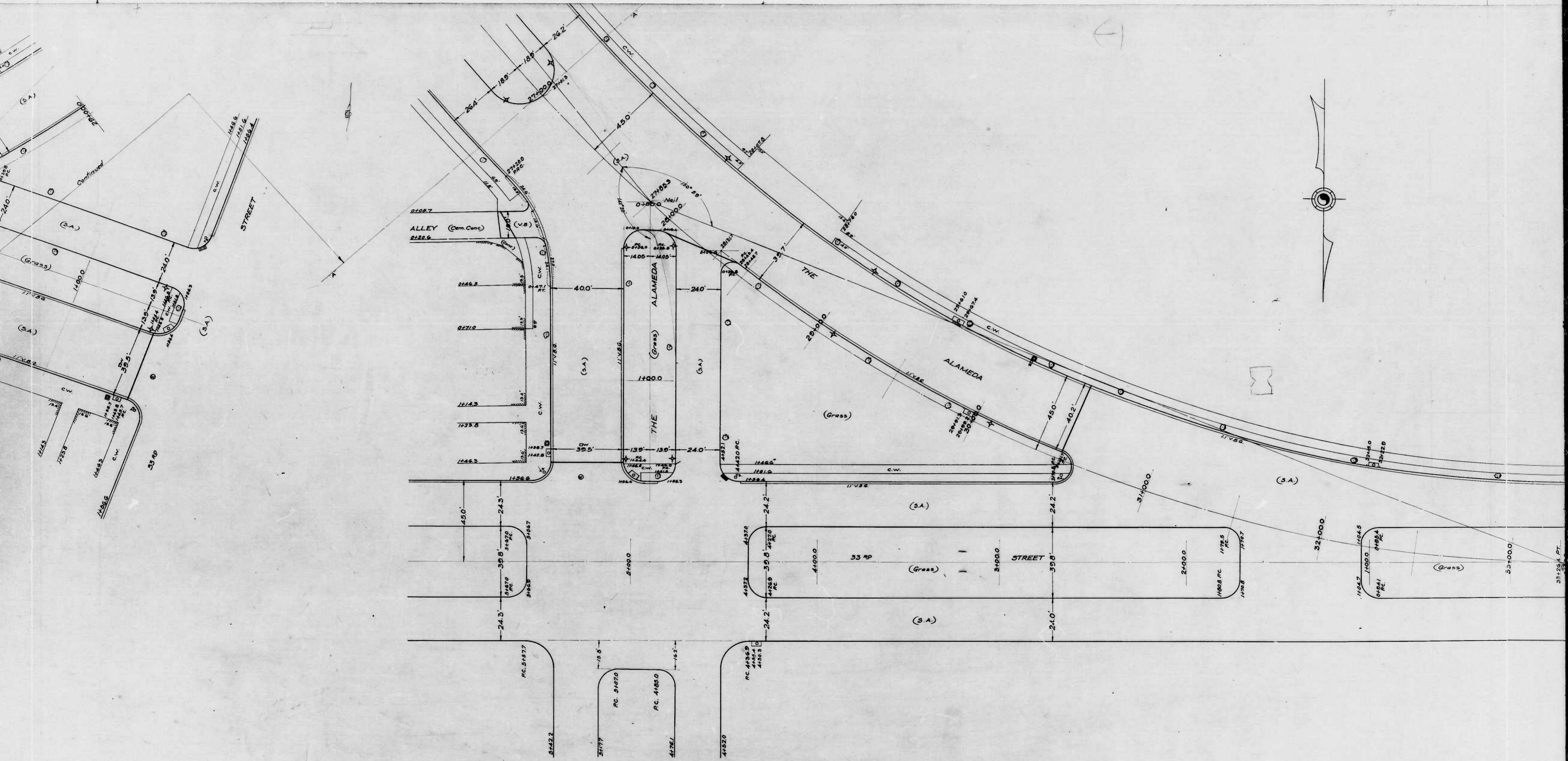
$16.0 + 115.4 + 15.0 + 103.1 +$
 $(12 \times 4.4) + (11 \times 76.6) + (145 \times 55) +$
 $+ 21.87 + 16.3 + 8.7 +$
 $8 + 22.87 + 15.4 + 4.6 +$
 $2 + 16.54 +$
 $8 + 16.5 + 6.1 + 32.2 + 76.4 + (145 \times 3.8) +$
 $7.6 + (6.5 \times 145) + (6.8 \times 145) + 11(49.5 + 7.9) = 253.50 \text{ sq. ft.}$

V.D. Gutters on C.K. Base
11(2.3 + 11.1)

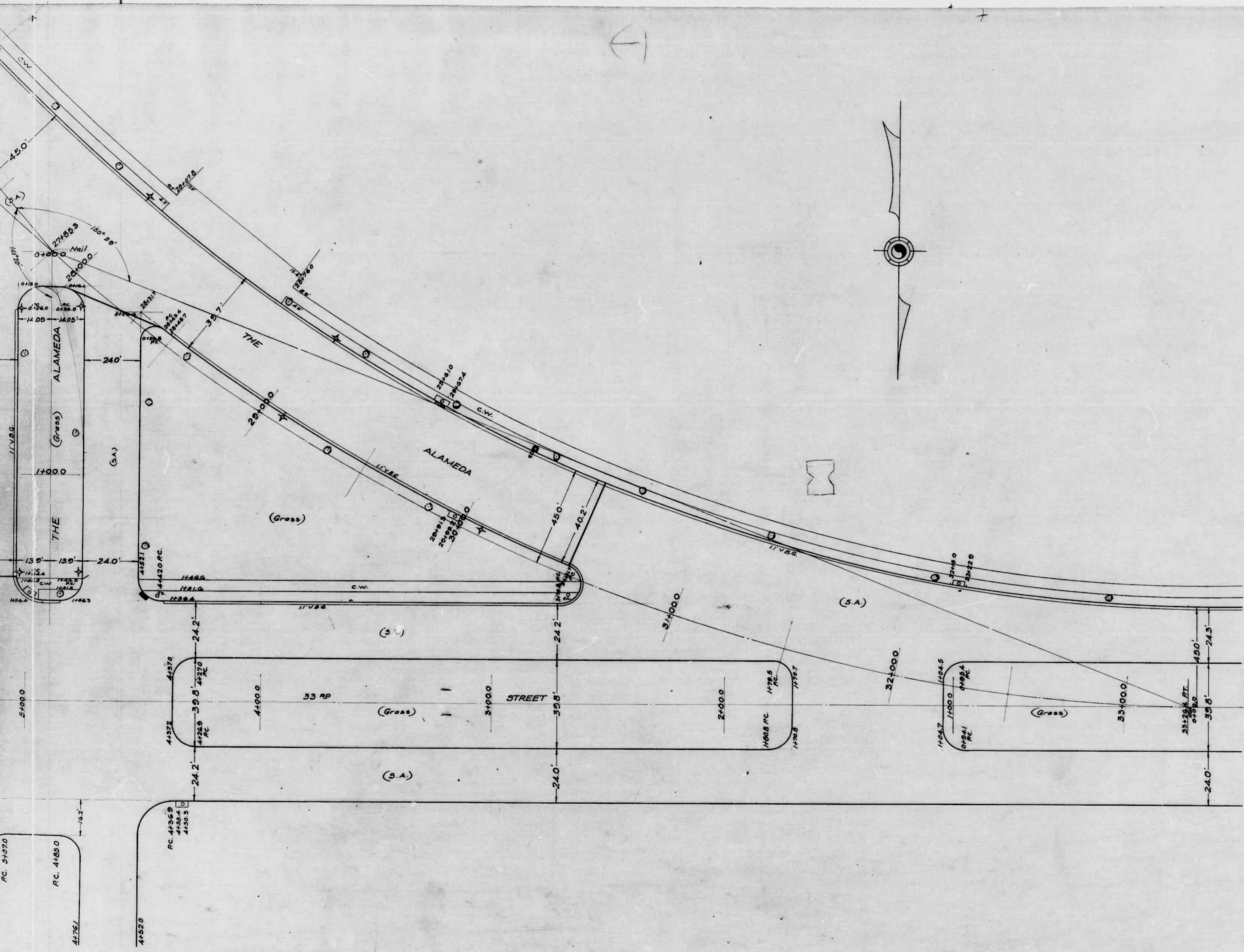


CITY OF BALTIMORE
 DEPARTMENT OF PUBLIC WORKS
 BUREAU OF HIGHWAYS
 CONT. No 724
 THE ALAMEDA-30TH ST.-33RD ST.
 SHALPANI WEAR SURF-1 1/2" BINDER-ONAN 8" CEM. CONC. BASE
 P.FLANIGAN & SONS CONTRACTOR
 STARTED - 7-16-40 COMPLETED - 10-3-40
 SCALE - 1" = 200' DATE - DEC. 9, 1940

shot 3



of 3



CITY OF BALTIMORE
 DEPARTMENT OF PUBLIC WORKS
 BUREAU OF HIGHWAYS

PLAN OF
 THE ALAMEDA - 30TH ST. - 33RD ST.

SCALE: 1" = 20.0' BOOK NO. X-130.
 CONT. NO. 724 DATE: APR. 14, 1940

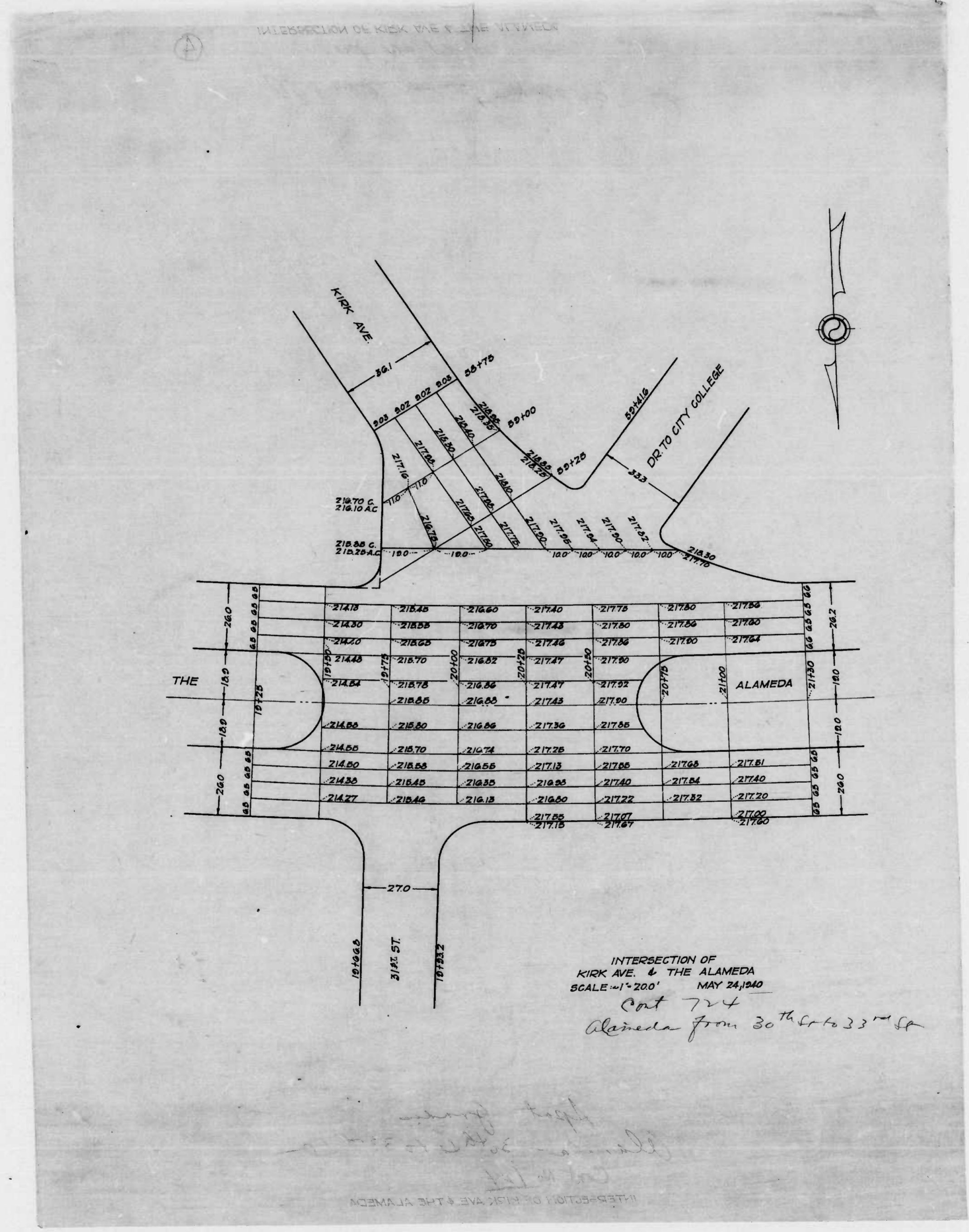
CORRECT APPROVED

Edward J. ... *George ...*
 ASSOCIATE ENGINEER HIGHWAYS ENGINEER
 APPROVED APPROVED

Edward J. ... *George ...*
 ENGR. PLANS & SURVEYS CHIEF ENGINEER

Sheet 3

Sheet 4



INTERSECTION OF
 KIRK AVE. & THE ALAMEDA
 SCALE - 1" = 200' MAY 24, 1940
 Cont 724
 Alameda from 30th St to 33rd St