

Note: The issuance of this profile does not commit the City to the acceptance and/or improvement of any thoroughfare shown thereon.

CITY OF BALTIMORE
 DEPARTMENT OF PUBLIC WORKS
 BUREAU OF HIGHWAYS
 PROFILE OF
 CLEARVIEW AVE - HARFORD RD - SHADOWLAWN AVE.
 CONT. NO. 718
 SCALE VER. 1"=20'
 HOR. 1"=200'
 MARCH 28, 1940

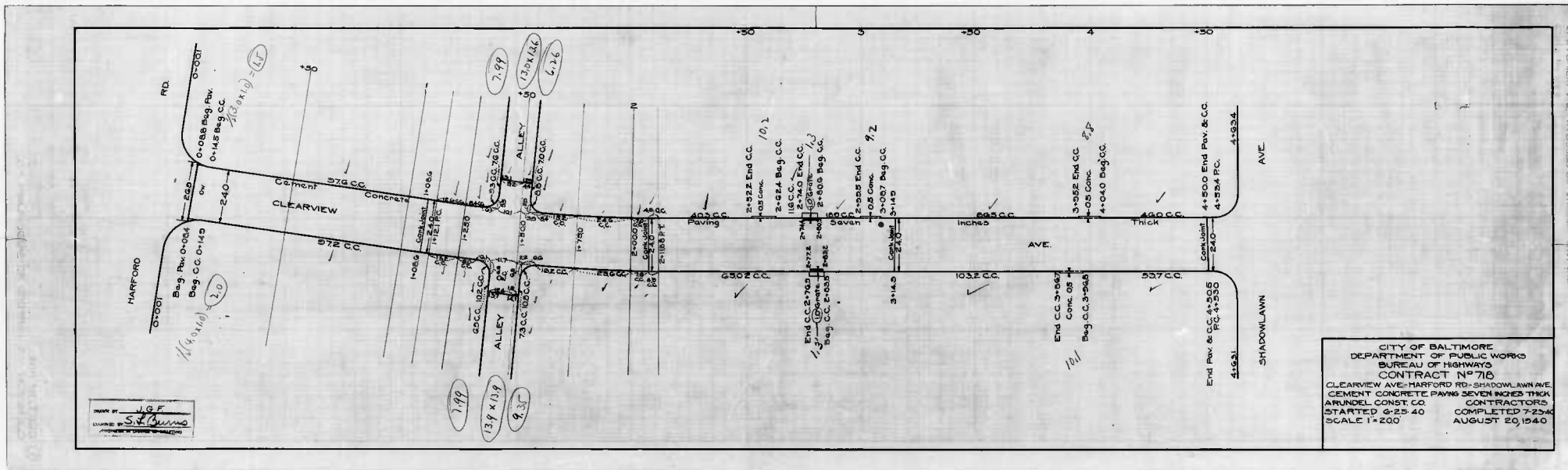
CORRECT
Wm. J. Gessner
 ASSOCIATE ENGINEER

APPROVED
George W. White
 HIGHWAYS ENGINEER

APPROVED
James C. Kelly
 ENGR. PLANS & SURVEYS

APPROVED
James C. Kelly
 CHIEF ENGINEER

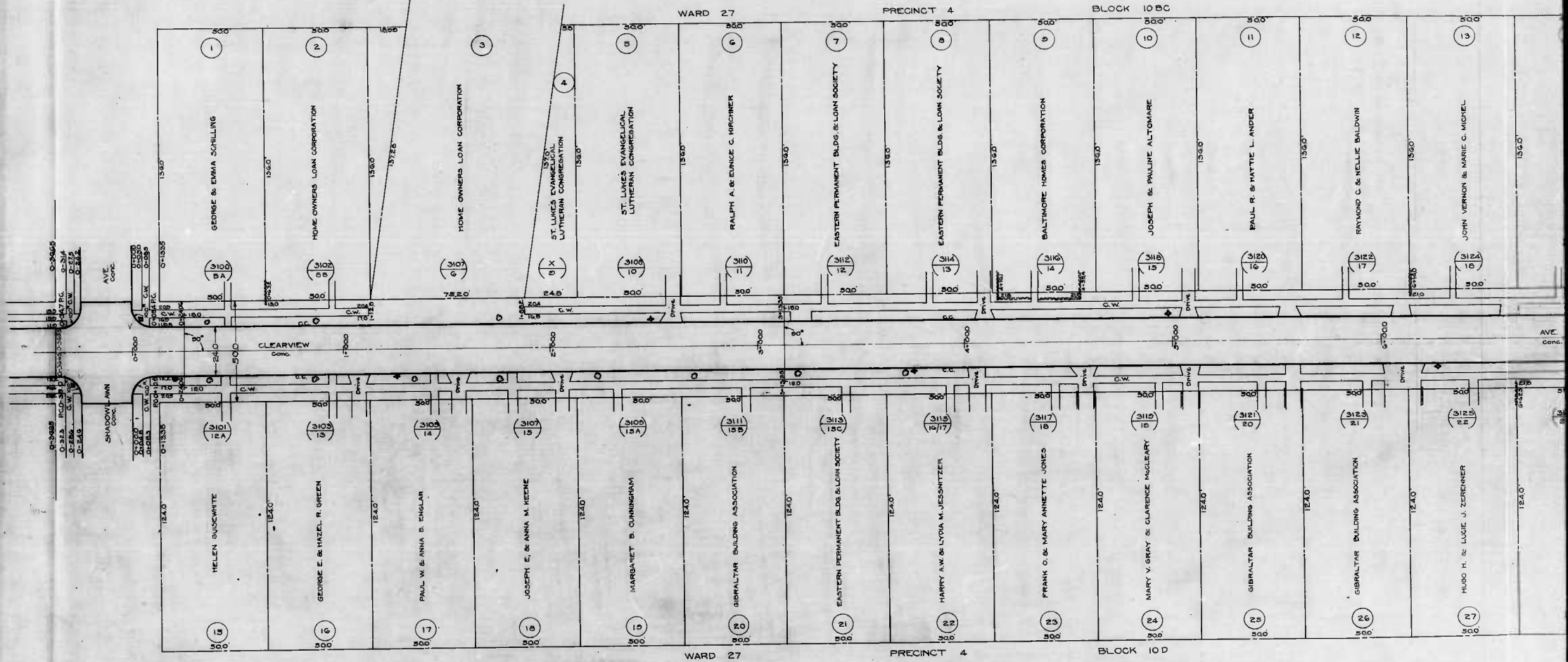
DRAWN BY: JGF
 CHECKED BY: *Wm. J. Gessner*
 ENGINEER IN CHARGE OF DRAWING



DRAWN BY J.G.F.
 CHECKED BY S.F. Burns
 PROJECT ENGINEER (REGISTERED)

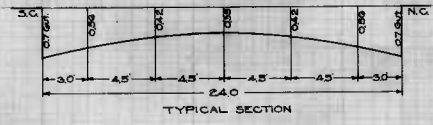
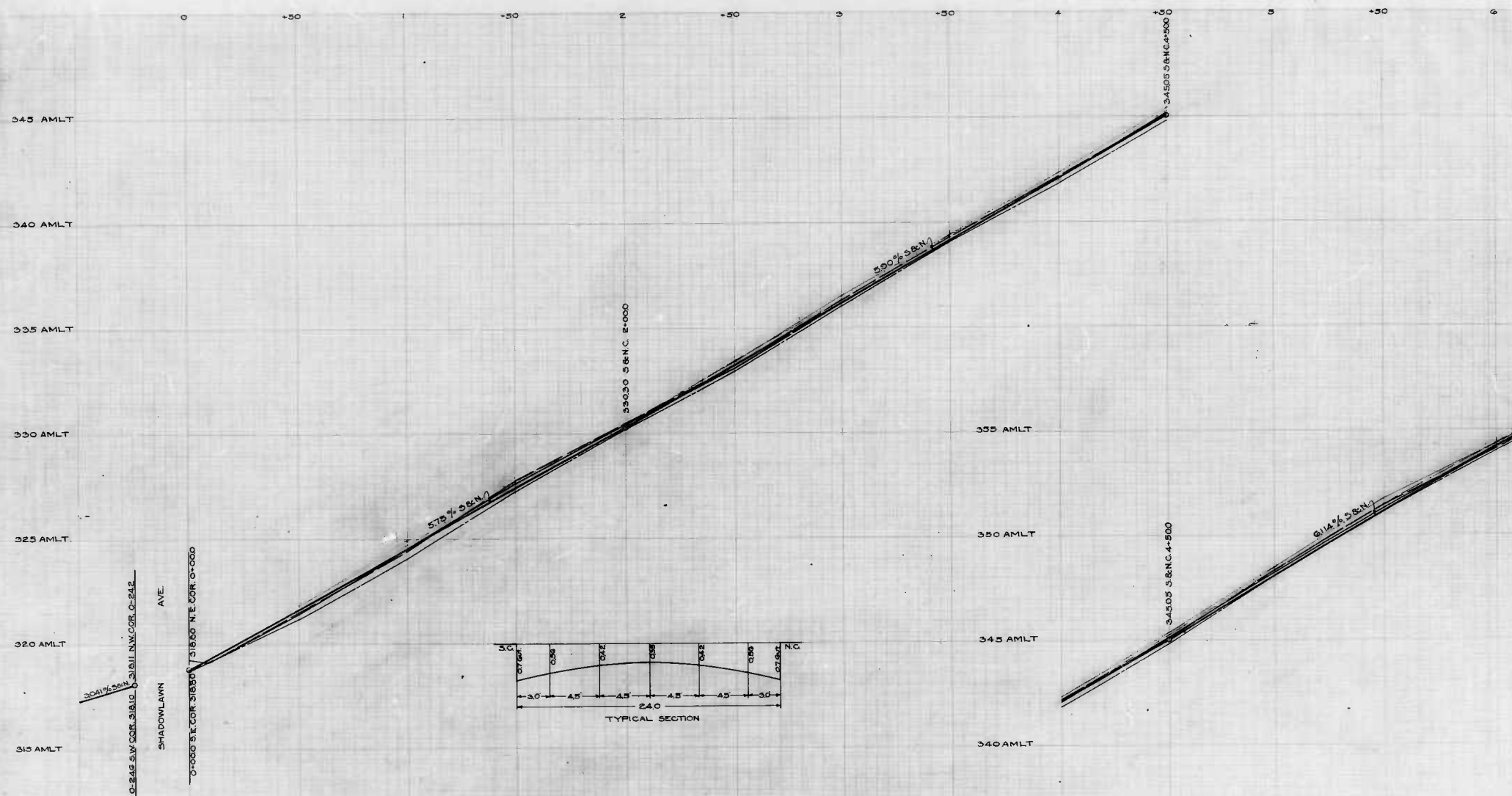
CITY OF BALTIMORE
 DEPARTMENT OF PUBLIC WORKS
 BUREAU OF HIGHWAYS
 CONTRACT NO. 718
 CLEARVIEW AVE - HARFORD RD - SHADOWLAWN AVE
 CEMENT CONCRETE PAVING SEVEN INCHES THICK
 ARUNDEL CONST. CO. CONTRACTORS
 STARTED 6-25-40 COMPLETED 7-22-40
 SCALE 1" = 200' AUGUST 20, 1940

314 11/11/40 P.M. C.B. DEPARTMENT OF PUBLIC WORKS

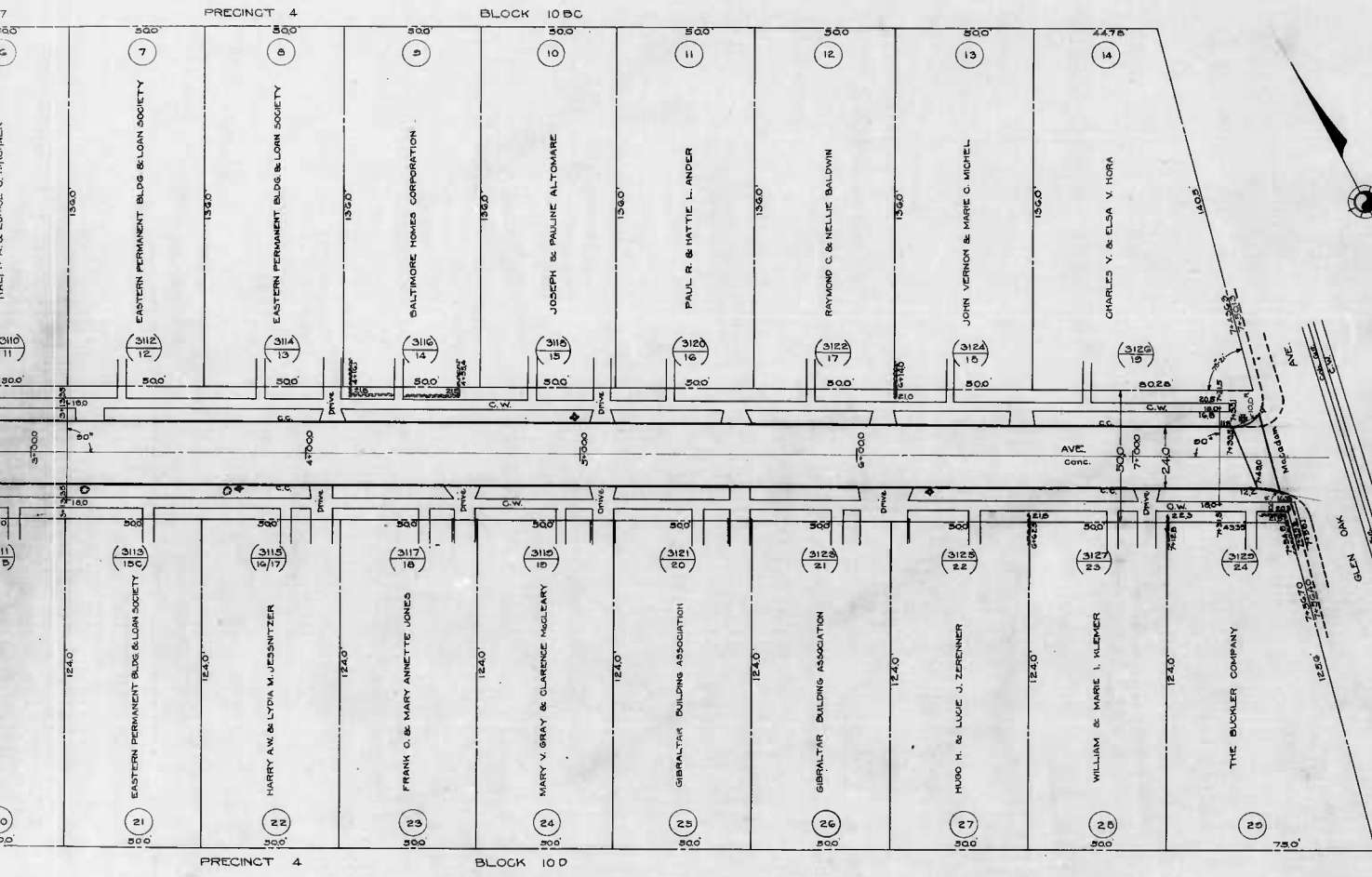


J.G.F.
Helenberg
Surveyor

Sheet 1



DRAWN BY *U.S.*
Hitchcock
 ENGINEER
 REGISTERED PROFESSIONAL ENGINEER



Note: The issuance of this plan does not commit the City to the acceptance and/or improvement of any thoroughfare shown thereon.

- (N°) PLAT NUMBER
- (N°) HOUSE OR DEVELOPMENT LOT NUMBER
(N°) APPEAL TAX COURT LOT NUMBER

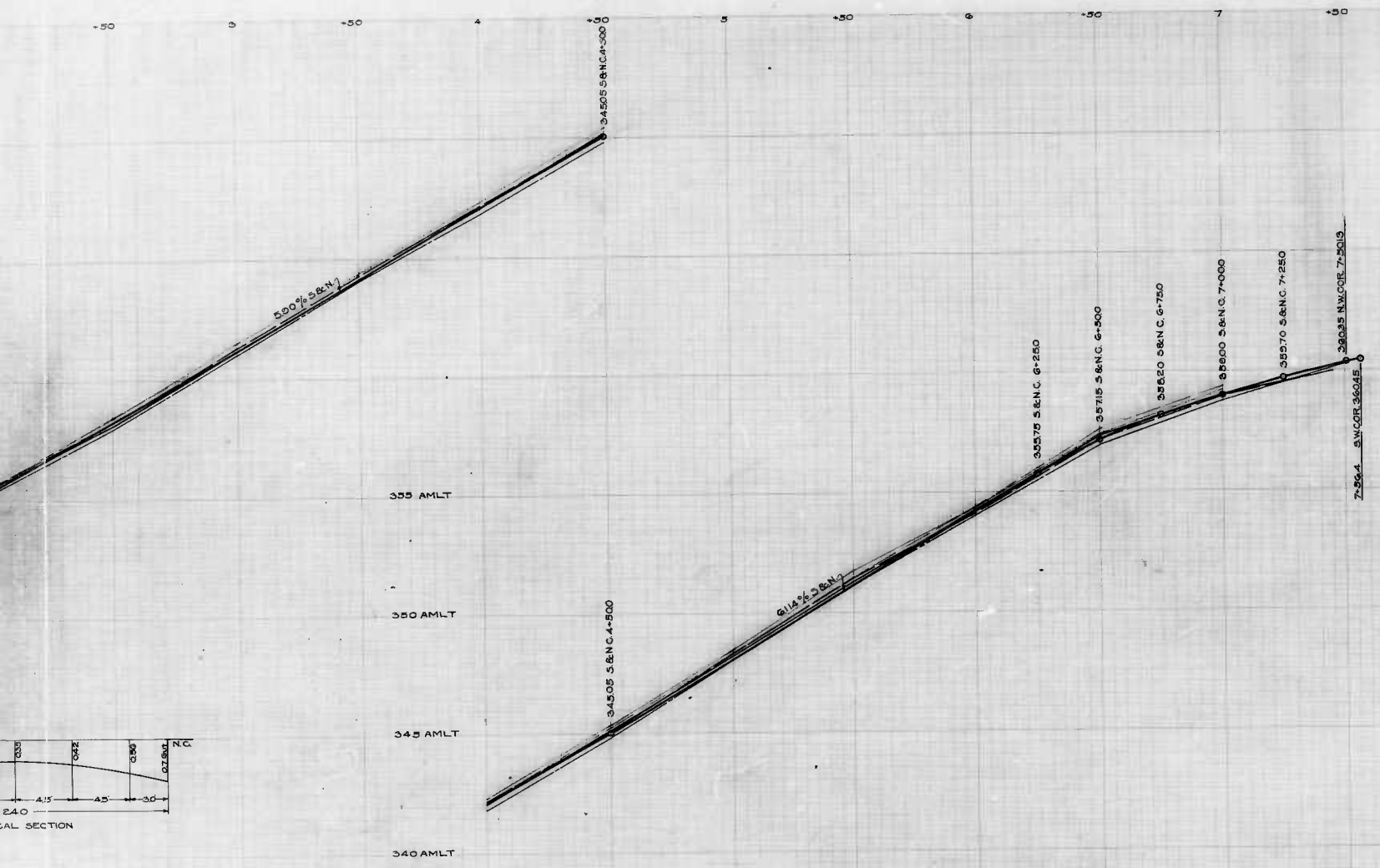
WARD 27
PRECINCT 4
BLOCK 10 B, C, D

May 8-1940
J. H. ...

CITY OF BALTIMORE
DEPARTMENT OF PUBLIC WORKS
BUREAU OF HIGHWAYS
ASSESSMENT PLAT NO 546-A
CLEARVIEW AVE.-SHADOWLAWN AVE.-GLEN OAK AVE.
CONT. NO 718
SCALE 1"=200' MARCH 29, 1940

CORRECT APPROVED
John J. ... ASSOCIATE ENGINEER
George A. ... HIGHWAYS ENGINEER
APPROVED APPROVED
Samuel ... ENGR. PLANS & SURVEYS
George ... CHIEF ENGINEER

CLEARVIEW AVE.-SHADOWLAWN AVE.-GLEN OAK AVE. CONT. NO 718

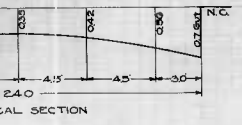


Note: The Issuance of This Profile Does Not Commit The City To The Acceptance And/Or Improvement Of Any Thoroughfares Shown Thereon

CLEARVIEW AVE. - SHADOWLAWN AVE. - GLENOAK AVE. PROFILE OF ROADWAY CONT. No. 718

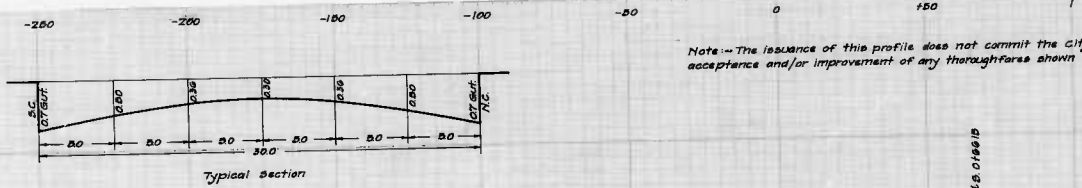
CITY OF BALTIMORE
 DEPARTMENT OF PUBLIC WORKS
 BUREAU OF HIGHWAYS
 PROFILE OF
 CLEARVIEW AVE. - SHADOWLAWN AVE. - GLENOAK AVE.
 CONT. No. 718
 VER. 1"=20' MARCH 27, 1940
 SCALE HOR. 1"=200'

CORRECT	APPROVED
<i>W. J. [Signature]</i>	<i>George [Signature]</i>
ASSOCIATE ENGINEER	HIGHWAYS ENGINEER
APPROVED	APPROVED
<i>[Signature]</i>	<i>[Signature]</i>
ENGR. PLANS & SURVEYS	CHIEF ENGINEER



Sheet 2

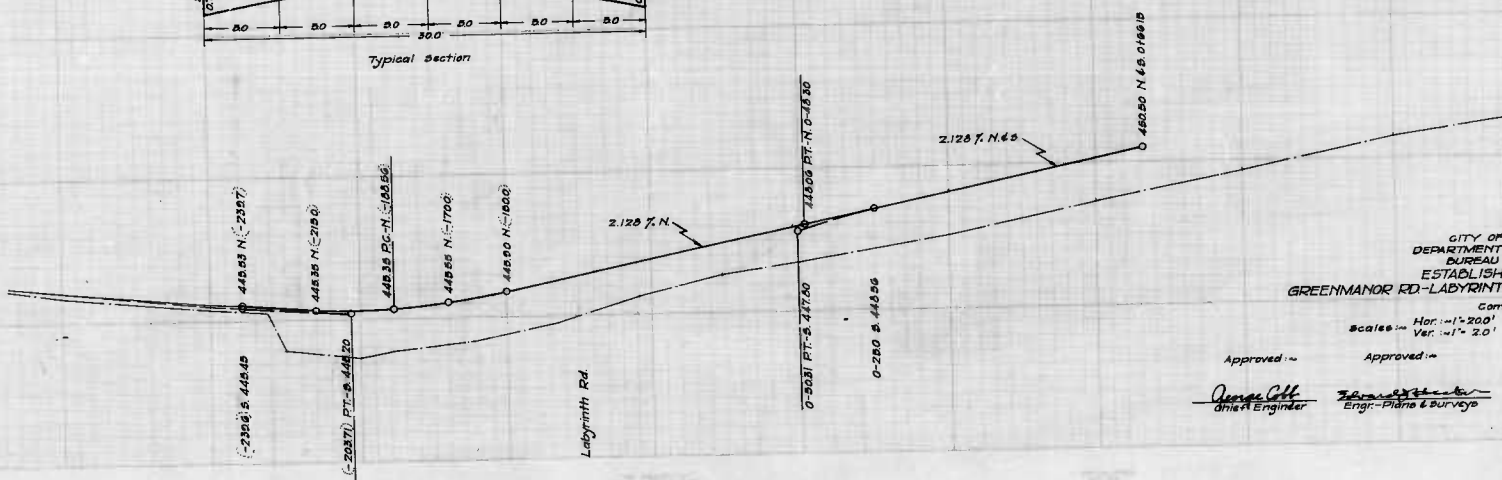
Note - The issuance of this profile does not commit the city to the acceptance and/or improvement of any thoroughfare shown thereon.



455-AMLT.

450-AMLT.

445-AMLT.



CITY OF BALTIMORE
 DEPARTMENT OF PUBLIC WORKS
 BUREAU OF HIGHWAYS
 ESTABLISHED GRADE OF
 GREENMANOR RD.-LABYRINTH RD. TO 150'±E of EDL-LABYRINTH RD.

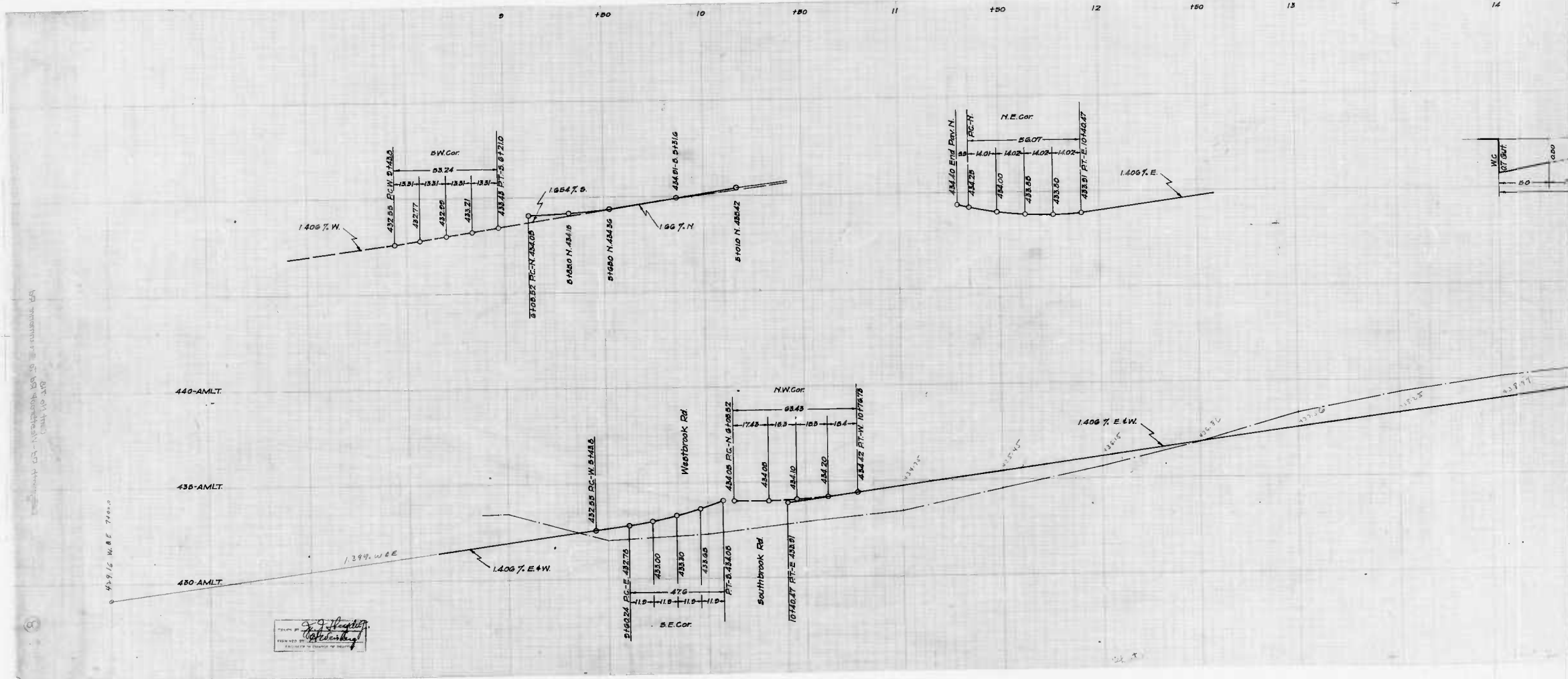
Cont. No 718
 Scale - Hor. - 1" = 200'
 Ver. - 1" = 20'

Book No. C-718
 April 16, 1940

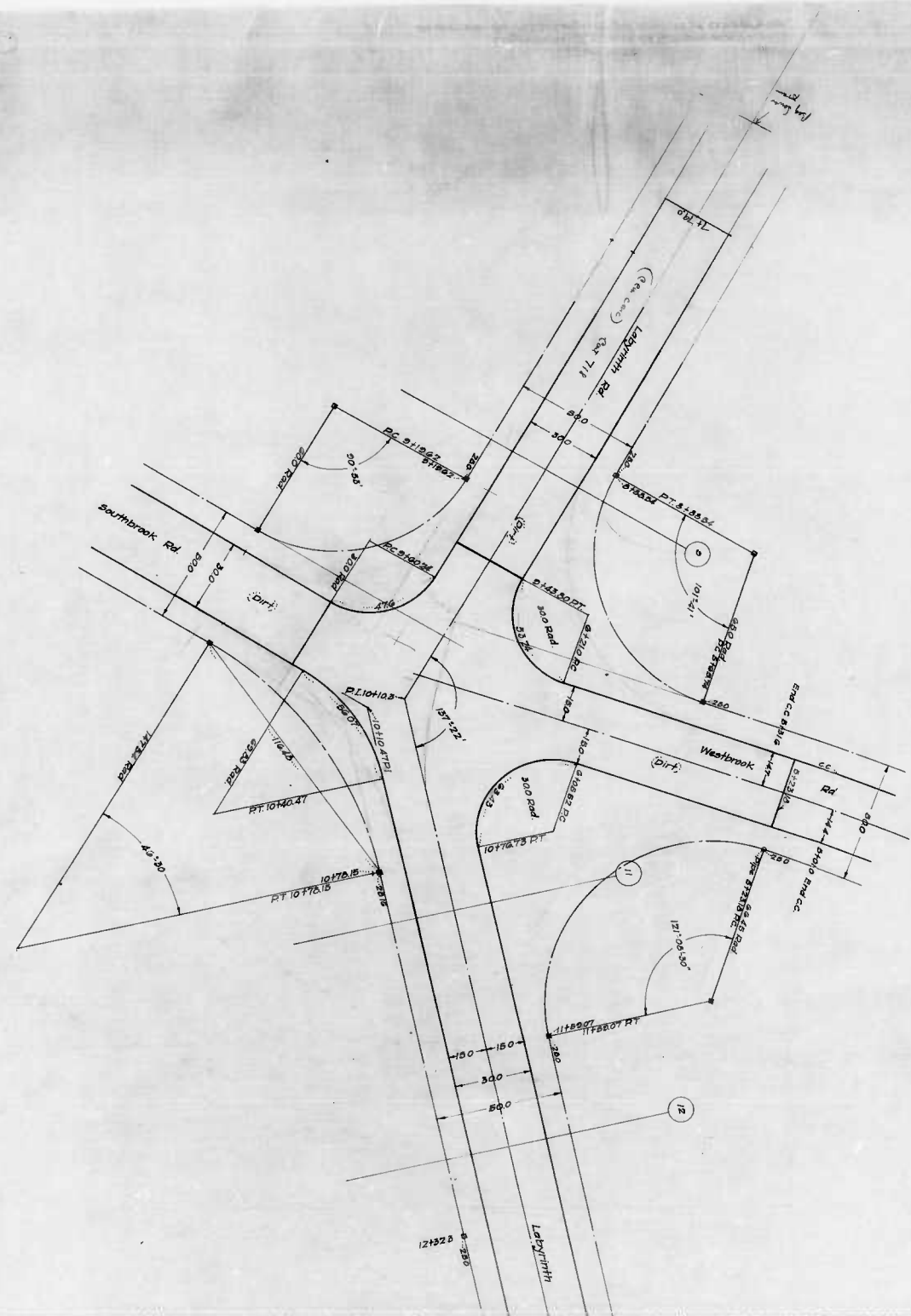
Approved: *James G. Hill* Chief Engineer
 Approved: *James G. Hill* Engr. - Plans & Surveys
 Corrected: *John J. Gessner* Associate Engineer
 Approved: *James G. Hill* Highway Engineer

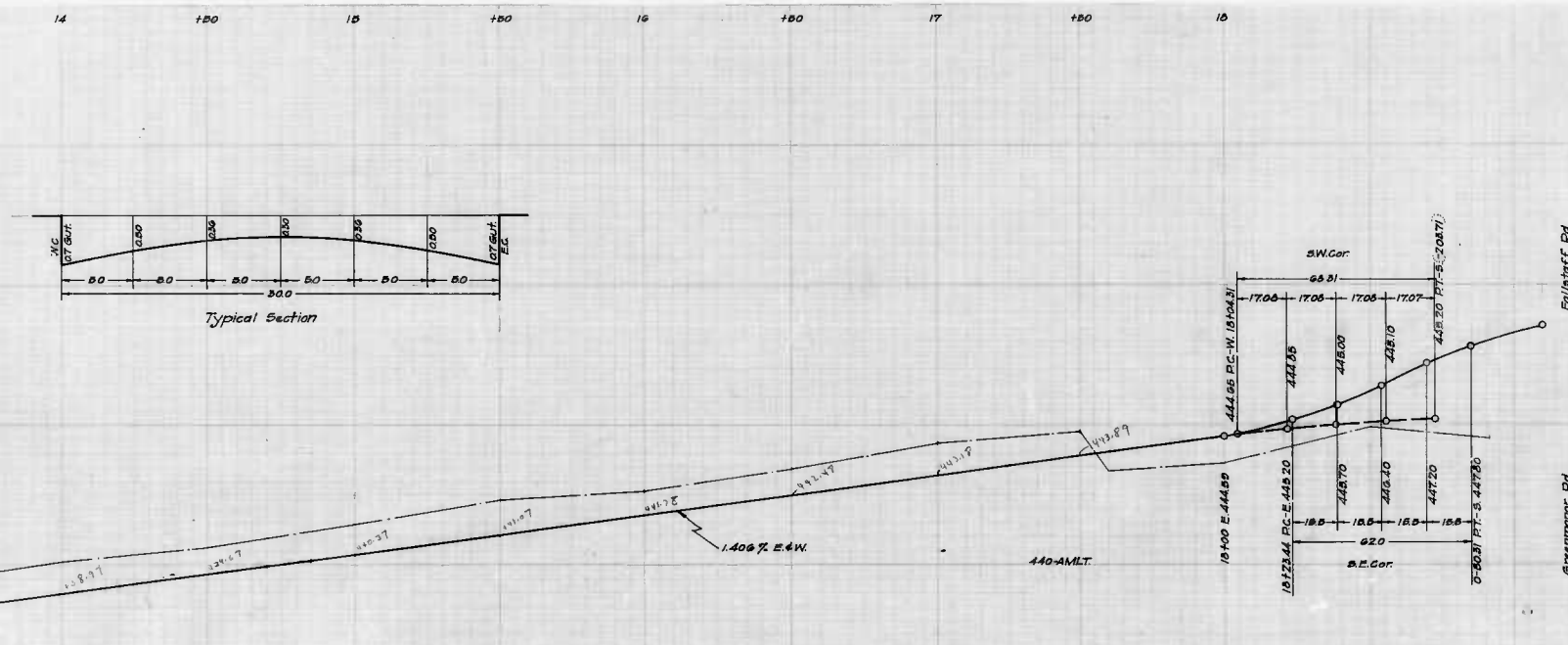
DESIGNED BY *J. J. Gessner*
 DRAWN BY *James G. Hill*
 CHECKED BY *James G. Hill*

Labyrinth Rd.



Professional Engineer
John J. [Signature]



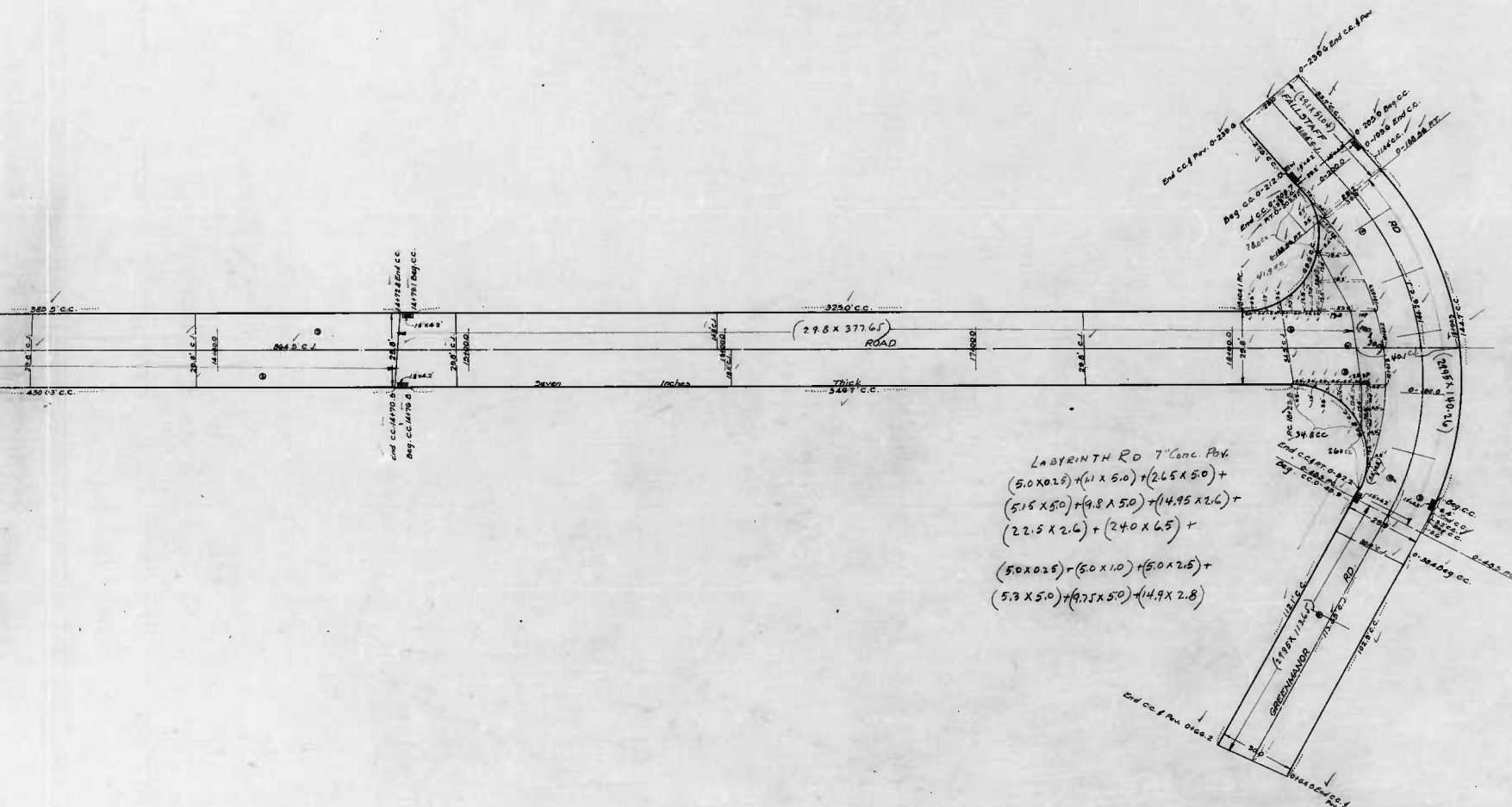


Note: The issuance of this profile does not commit the City to the acceptance and/or improvement of any thoroughfares shown thereon.

CITY OF BALTIMORE
 DEPARTMENT OF PUBLIC WORKS
 BUREAU OF HIGHWAYS
 ESTABLISHED GRADE OF
 LABYRINTH RD - WESTBROOK RD TO GREENMANOR RD.
 Cont. No. 718

Scales: Hor. = 1" = 200'
 Ver. = 1" = 20'
 Book No. C-718
 April 12, 1940

Approved: *James C. Kelly* Chief Engineer
 Approved: *Edmund J. ...* Engr. - Plans & Surveys
 Correct: *Wm. ...* Associate Engineer
 Approved: *George W. ...* Highway Engineer

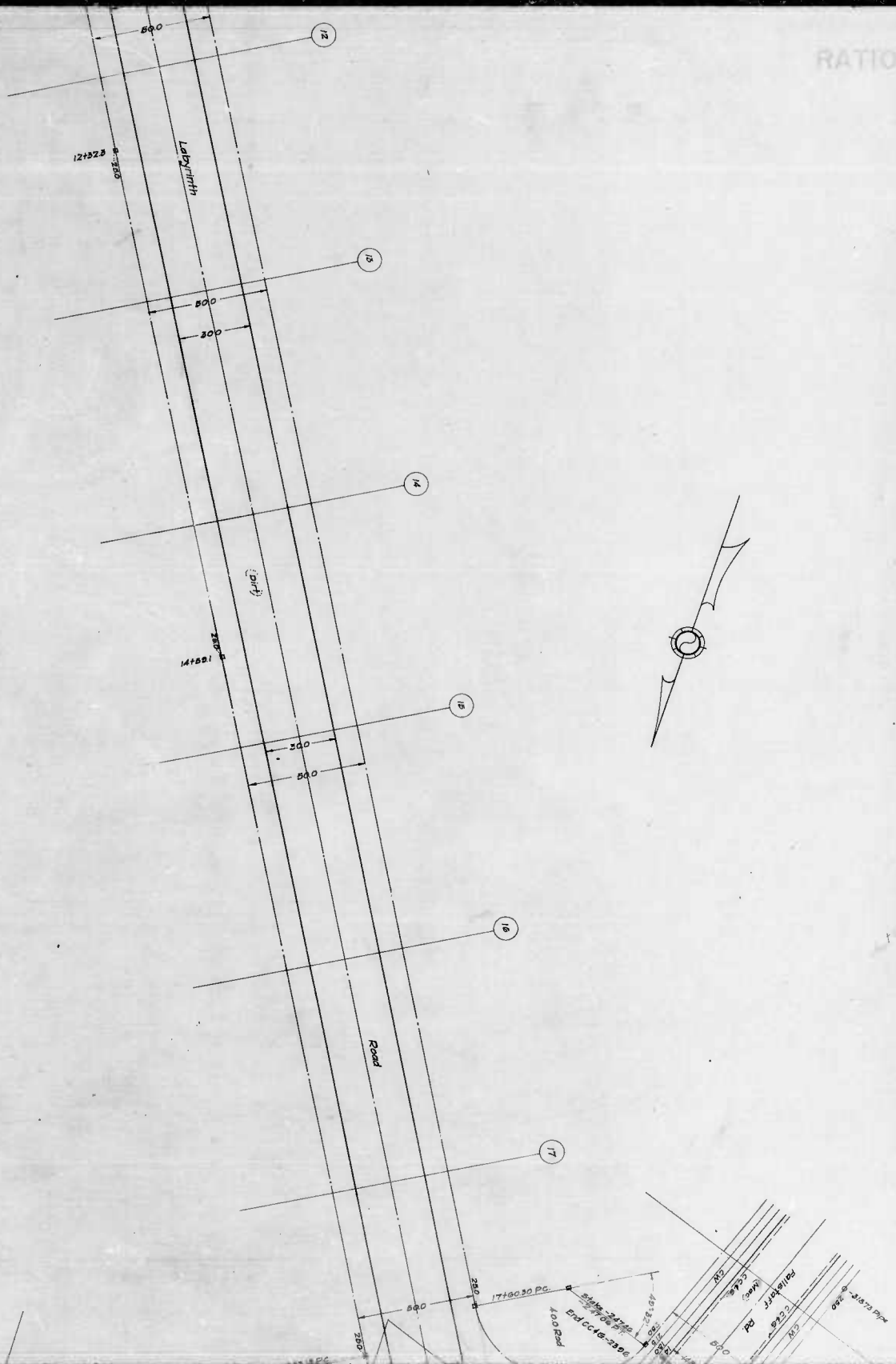


LABYRINTH RD 7" Conc. Pav.
 $(5.0 \times 0.25) + (11 \times 5.0) + (26.5 \times 5.0) +$
 $(5.15 \times 5.0) + (9.8 \times 5.0) + (14.95 \times 2.6) +$
 $(22.5 \times 2.6) + (24.0 \times 6.5) +$
 $(5.0 \times 0.25) + (5.0 \times 1.0) + (5.0 \times 2.5) +$
 $(5.3 \times 5.0) + (9.75 \times 5.0) + (14.9 \times 2.8)$

GREENMANOR RD. 7" Conc. Pav.
 $(0.25 \times 7.6) + (2.1 \times 7.6) + (3.35 \times 17.8) + (8.9 \times 8.4) +$
 $(15.3 \times 12.0) + (20.6 \times 12.0) - (24.0 \times 6.5) =$
 $(3.0 \times 25.0) + (6.25 \times 10.0) + (5.6 \times 10.0) + (2.75 \times 12.6) +$
 $(4.0 \times 0.4) =$

CITY OF BALTIMORE
 DEPARTMENT OF PUBLIC WORKS
 BUREAU OF HIGHWAYS
 CONT. 19 718
 LABYRINTH RD-200' WESTBROOK RD-GREENMANOR RD
 GREENMANOR RD-LABYRINTH RD - 150' EAST
 CEMENT CONCRETE PAVING SEVEN INCHES THICK
 ARUNDEL CONSTR CO CONTRACTOR
 STARTED: 10-26-40 \$ 65-40 COMPLETED: 11-30-40 \$ 10-20-40
 SCALE: 1" = 20.0' DATE: DEC 16, 1940

718



Note: The issuance of this plan does not commit the City to the acceptance or/and improvement of any thoroughfares shown thereon.

148

