

NOTE  
 The Issuance Of This Plan & Profile Does Not Commit  
 The City To The Acceptance And/Or Improvement Of Any  
 Thoroughfares Shown Thereon.

CITY OF BALTIMORE  
 DEPARTMENT OF PUBLIC WORKS  
 BUREAU OF HIGHWAYS  
 PLAN & PROFILE  
 ABINGTON AVE - LOHRS LANE - BALTIMORE ST  
 PROF. VER. 1" = 20'  
 HORIZ. 1" = 200'  
 SCALE PLAN 1" = 200'  
 DATE JULY 13, 1939  
 CONT. N° 711

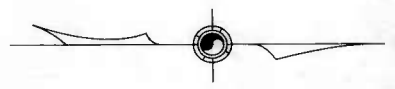
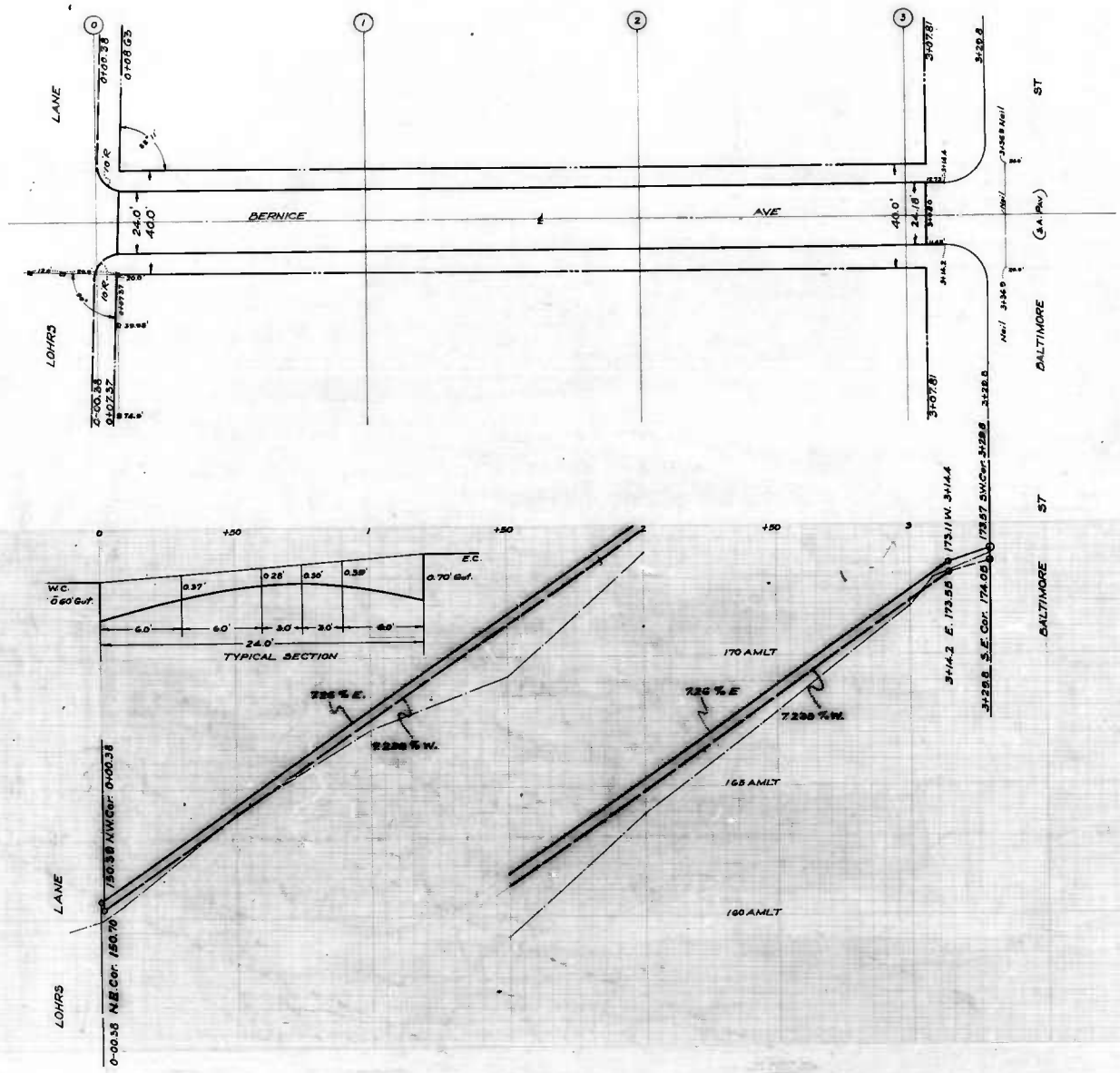
CORRECT APPROVED  
*[Signature]* *[Signature]*  
 ASSOCIATE ENGINEER ACTING HIGHWAYS ENGINEER  
 APPROVED APPROVED  
*[Signature]* *[Signature]*  
 ENGR PLANS & SURVEYS & LU CHIEF ENGINEER

DRAWN BY *[Signature]*  
 CHECKED BY *[Signature]*  
 ENGINEER IN CHARGE OF SURVEYS

ABINGTON AVE - LOHRS LANE - BALTIMORE ST  
 CONT. N° 711

BALTIMORE ST - LOHRS LANE  
 CONT. N° 711





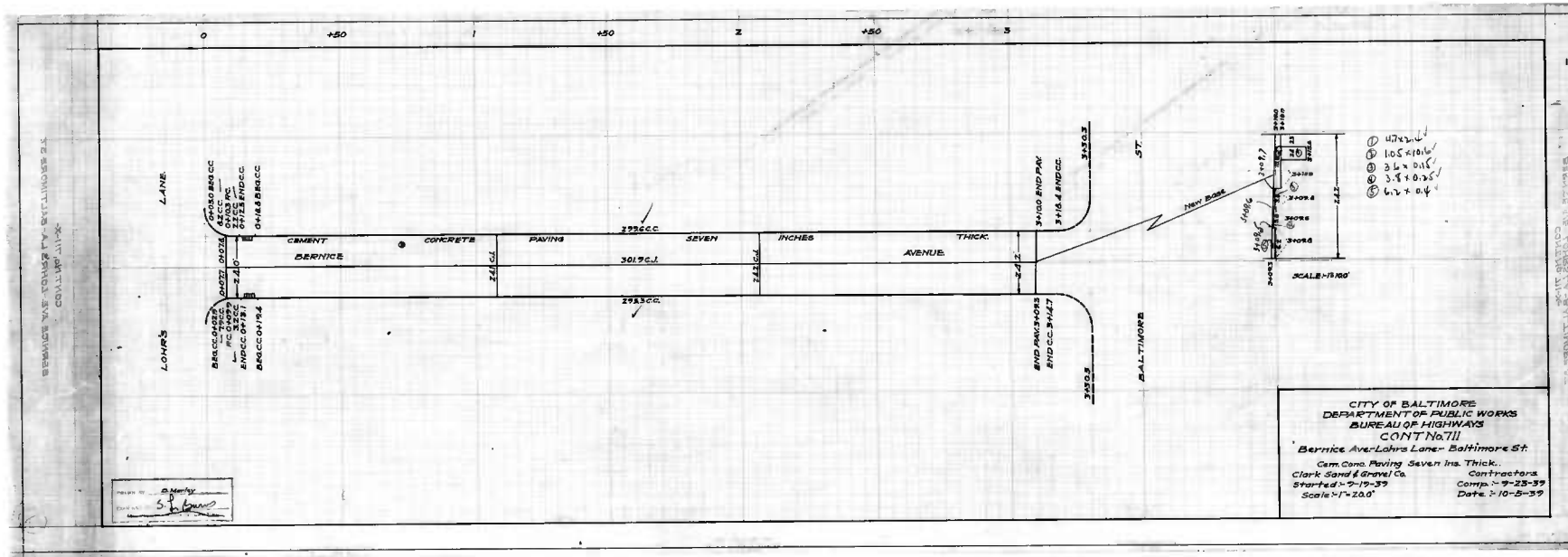
**"NOTE"**  
 The issuance of this Plan & Profile Does Not Commit  
 The City To The Acceptance And/or Improvement Of Any  
 Throughfares Shown Thereon.

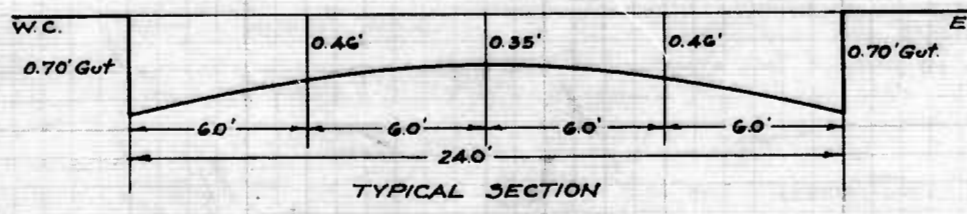
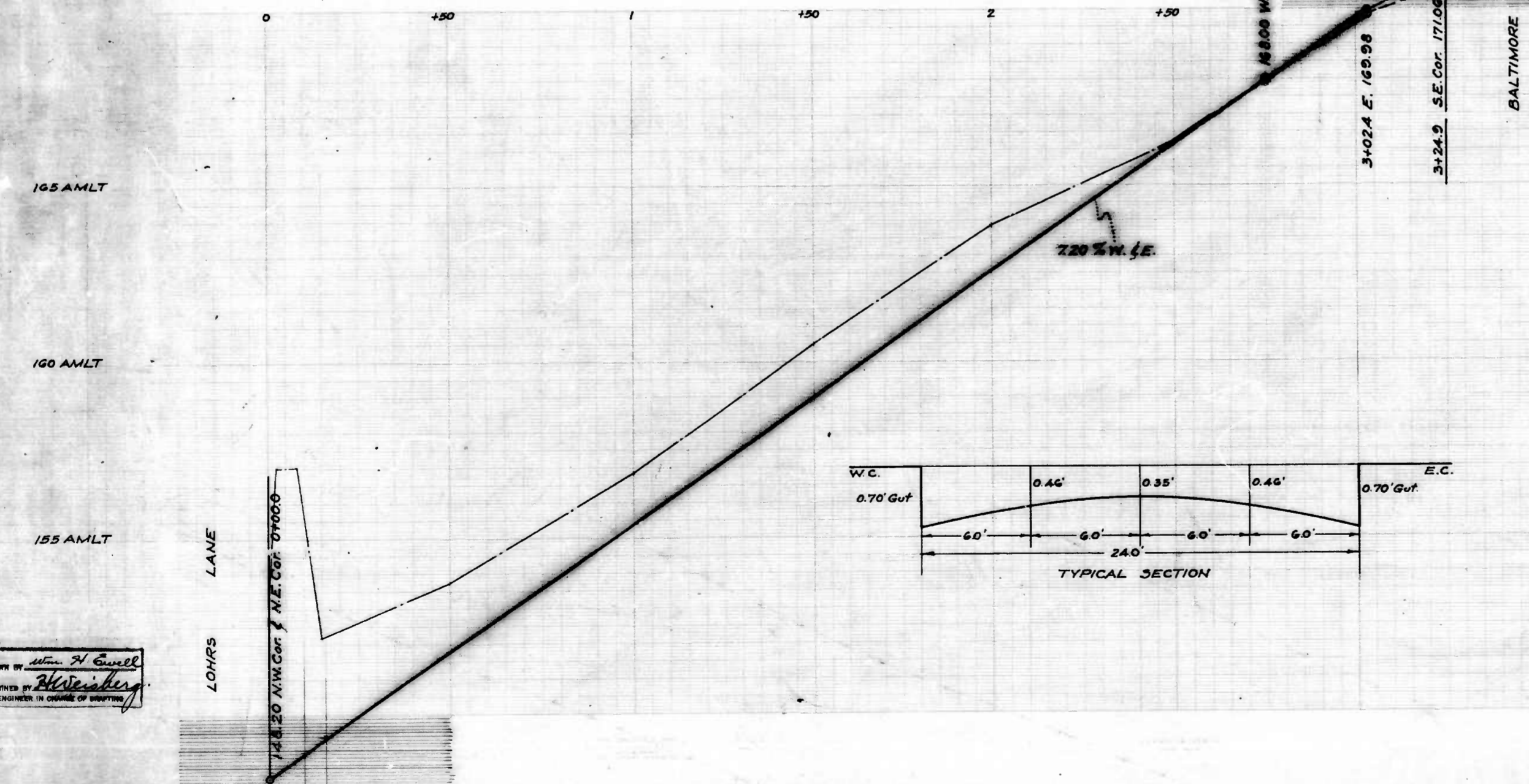
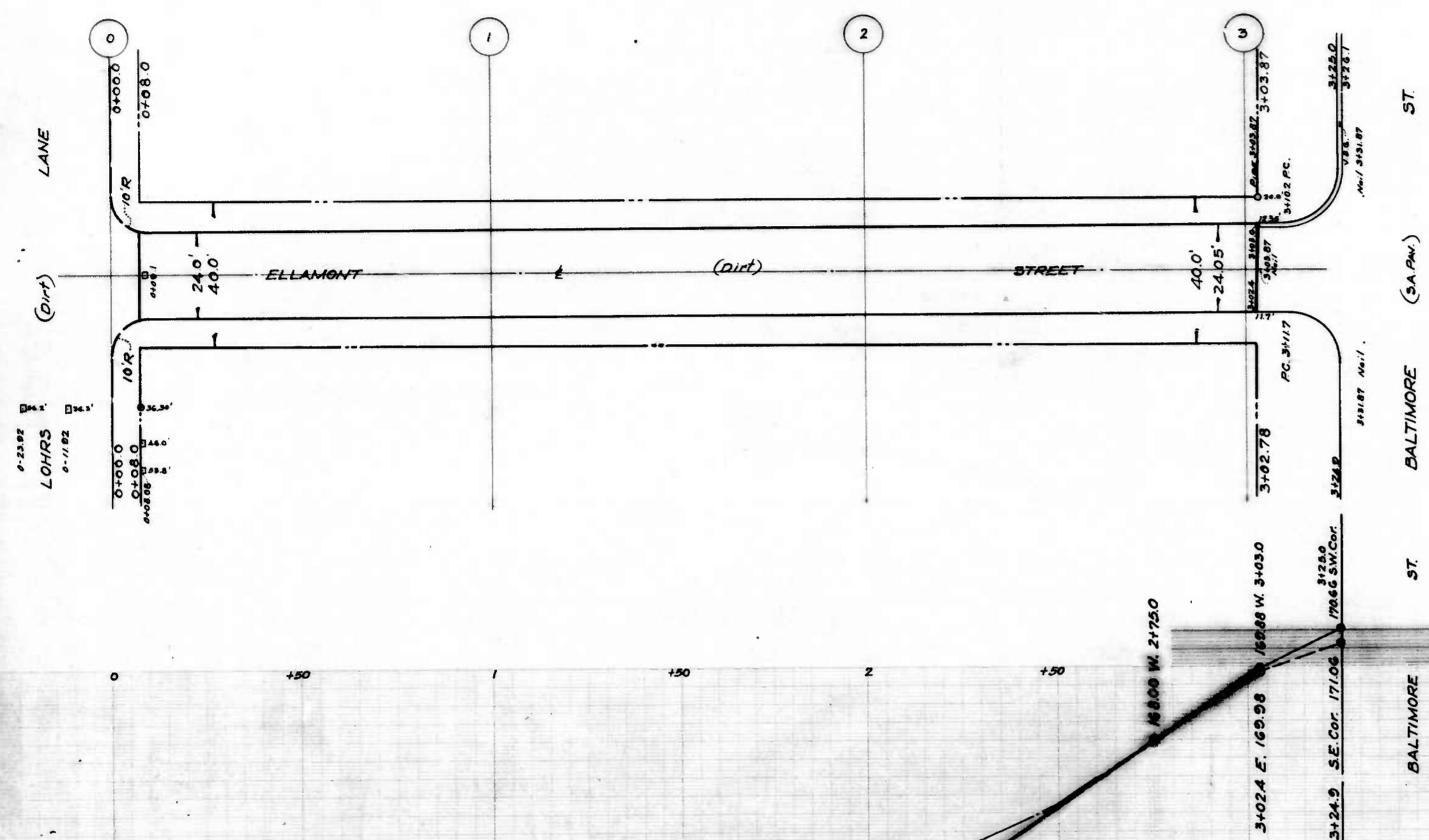
CITY OF BALTIMORE  
 DEPARTMENT OF PUBLIC WORKS  
 BUREAU OF HIGHWAYS  
 PLAN & PROFILE  
 BERNICE AVE - LOHRS LA. - BALTIMORE ST.  
 HOR. 1" = 20.0' BOOK N° 711  
 VER. 1" = 20' DATE: JULY 2, 1933  
 SCALE: PLAN: 1" = 20.0' CONT. N° 711

CORRECT APPROVED  
*Edward Hecker* *Edmund J. ...*  
 ASSOCIATE ENGINEER ACTING HIGHWAYS ENGINEER  
 APPROVED APPROVED  
 ENGR. PLANS & SURVEYS CHIEF ENGINEER

DESIGNED BY *Maxwell*  
 CHECKED BY *Heisterberg*  
 ENGINEER IN CHARGE OF DISTRICT

BERNICE AVE - LOHRS LA. - BALTIMORE ST.  
 PLAN & PROFILE  
 BOOK N° 711  
 CONT. N° 711





"NOTE"  
The Issuance of This Plan & Profile Does Not Commit  
The City To The Acceptance And/Or Improvement of Any  
Thoroughfares Shown Thereon.

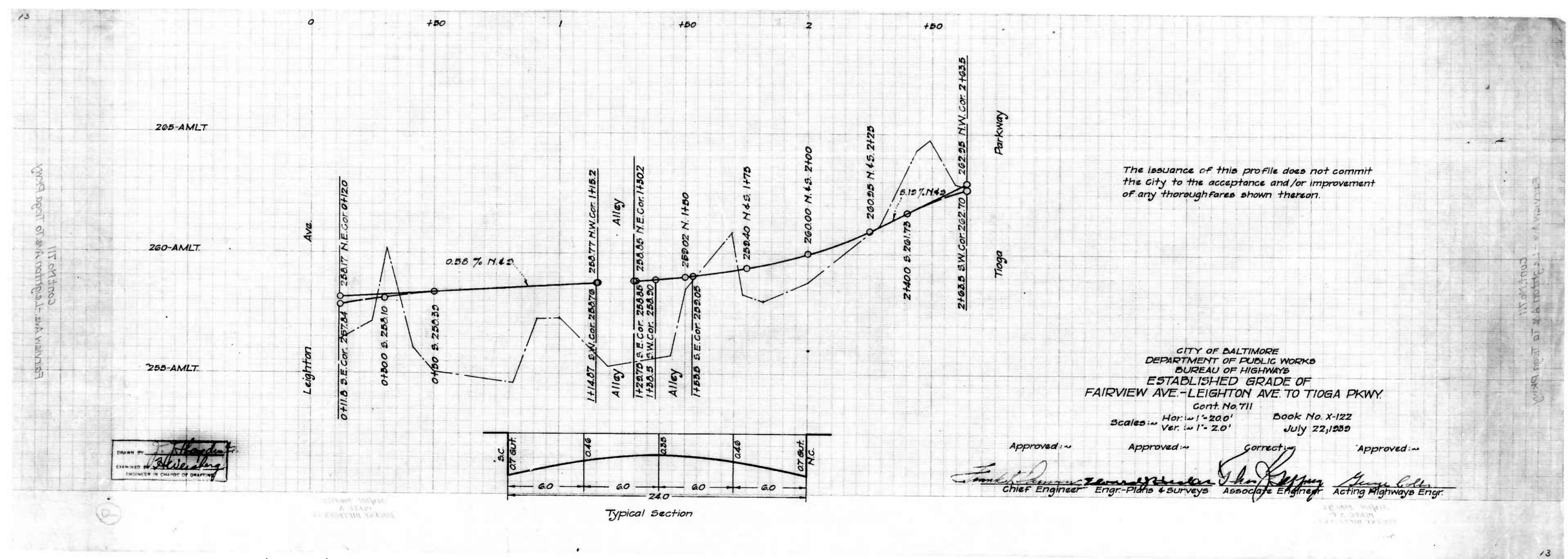
CITY OF BALTIMORE  
DEPARTMENT OF PUBLIC WORKS  
BUREAU OF HIGHWAYS  
PLAN & PROFILE  
ELLAMONT ST.-LOHRS LA.-BALTIMORE ST.  
PROF. HOR. 1" = 20.0' BOOK N° C-711  
SCALE: VER. 1" = 2.0' DATE: JULY 15, 1929  
PLAN: 1" = 20.0' CONT. N° 711

CORRECT APPROVED  
*Herbert J. ...* *George ...*  
ASSOCIATE ENGINEER ACTING HIGHWAYS ENGINEER  
APPROVED APPROVED  
*Edward J. ...* *James ...*  
ENGR. PLANS & SURVEYS CHIEF ENGINEER

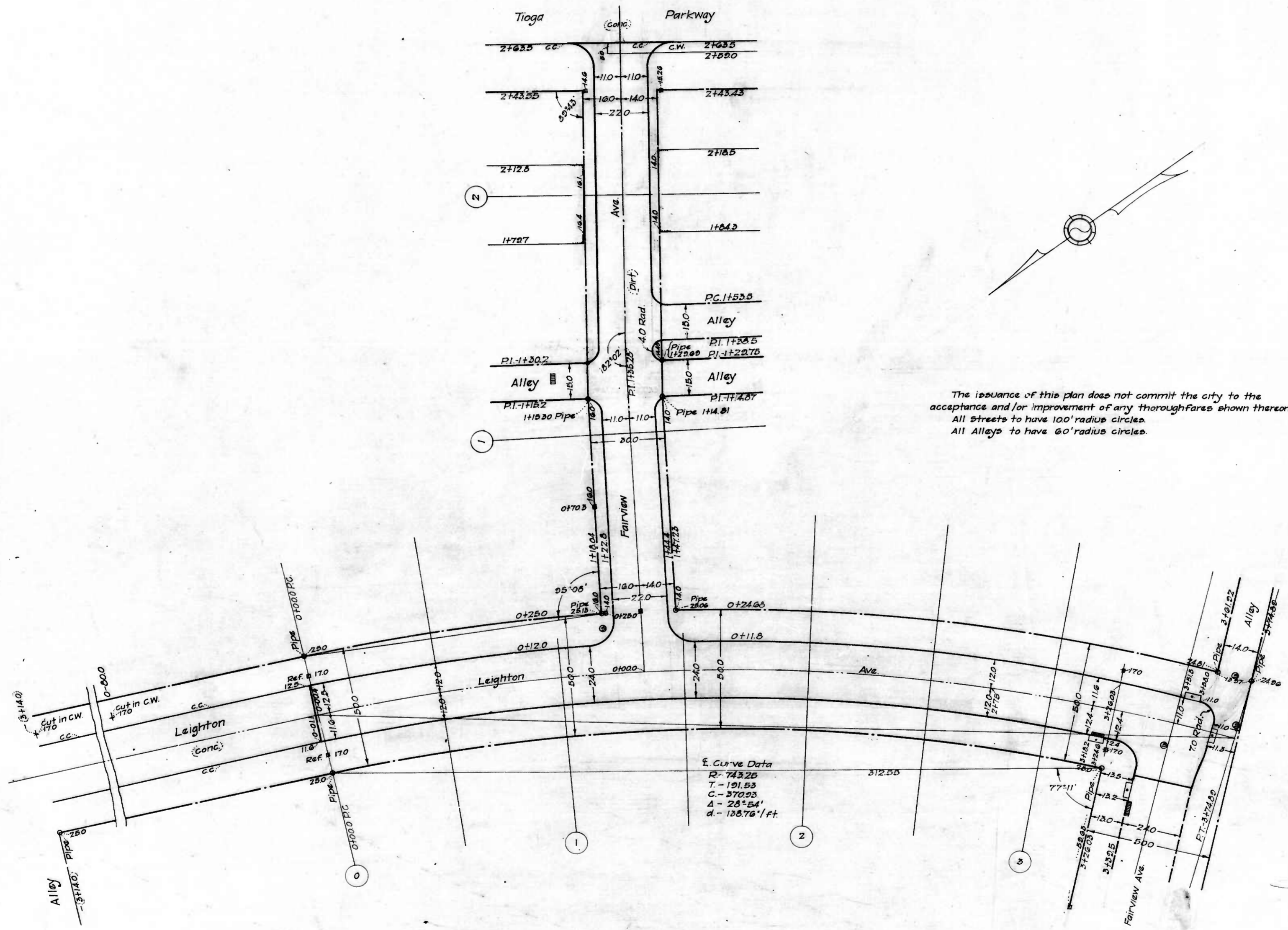
DRAWN BY *Alfred H. ...*  
CHECKED BY *Alfred ...*  
ENGINEER IN CHARGE OF SHOPPING

TELEPHONE ROOM - 1000 - 1000 - 1000





LEIGHTON AVE - END OF PRES PAV TO FAIRVIEW AVE  
FAIRVIEW AVE - LEIGHTON AVE TO TIOGA PKWY  
CONT. No. 711



The issuance of this plan does not commit the city to the acceptance and/or improvement of any thoroughfares shown thereon. All Streets to have 100' radius circles. All Alleys to have 60' radius circles.

CITY OF BALTIMORE  
DEPARTMENT OF PUBLIC WORKS  
BUREAU OF HIGHWAYS  
LAYOUT  
LEIGHTON AVE. - END OF PRES PAV. TO FAIRVIEW AVE.  
FAIRVIEW AVE. - LEIGHTON AVE. TO TIOGA PKWY.  
Cont. No. 711

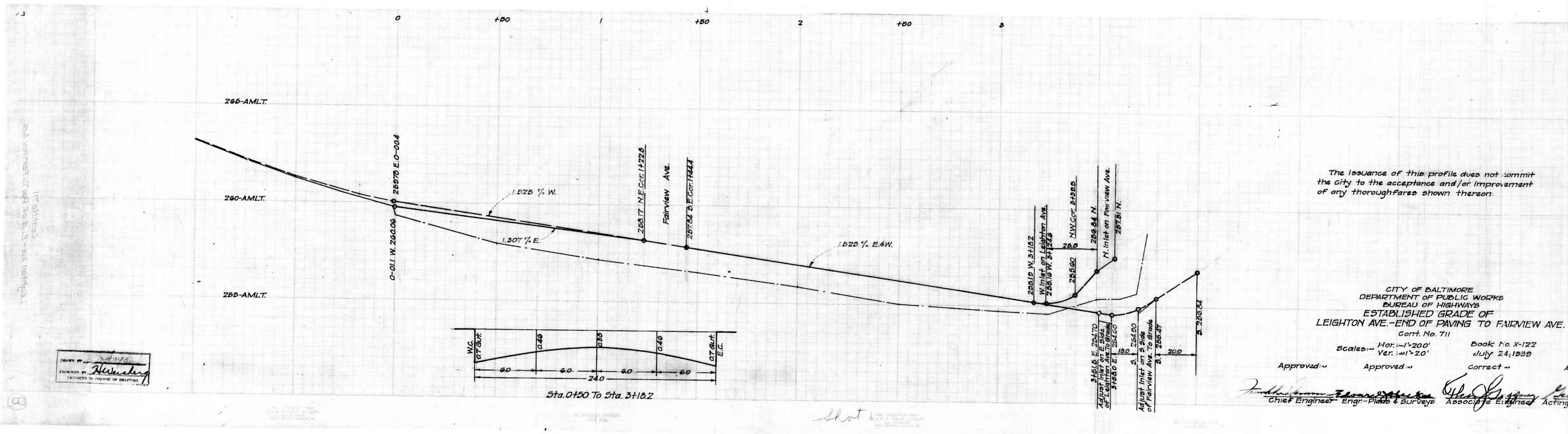
Scale: 1" = 200' Book X-122-35 55455 July 20, 1935

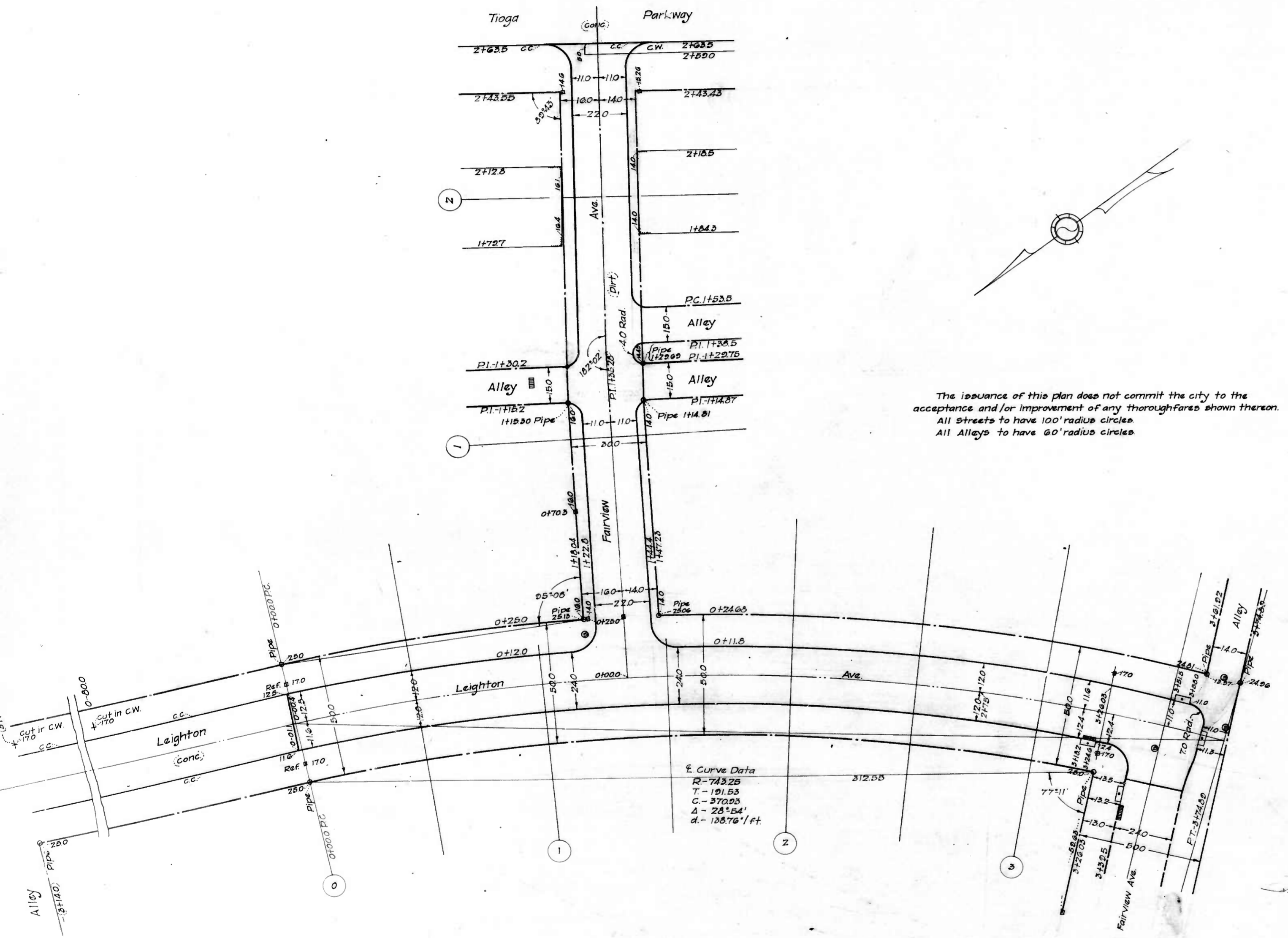
Approved: *[Signature]* Chief Engineer  
Approved: *[Signature]* Engr. Plans & Surveys  
Corrected: *[Signature]* Associate Engineer  
Approved: *[Signature]* Acting Highway

DESIGNED BY: *[Signature]*  
DRAWN BY: *[Signature]*  
CHECKED BY: *[Signature]*  
ENGINEER IN CHARGE OF DRAWING

Sheet 1







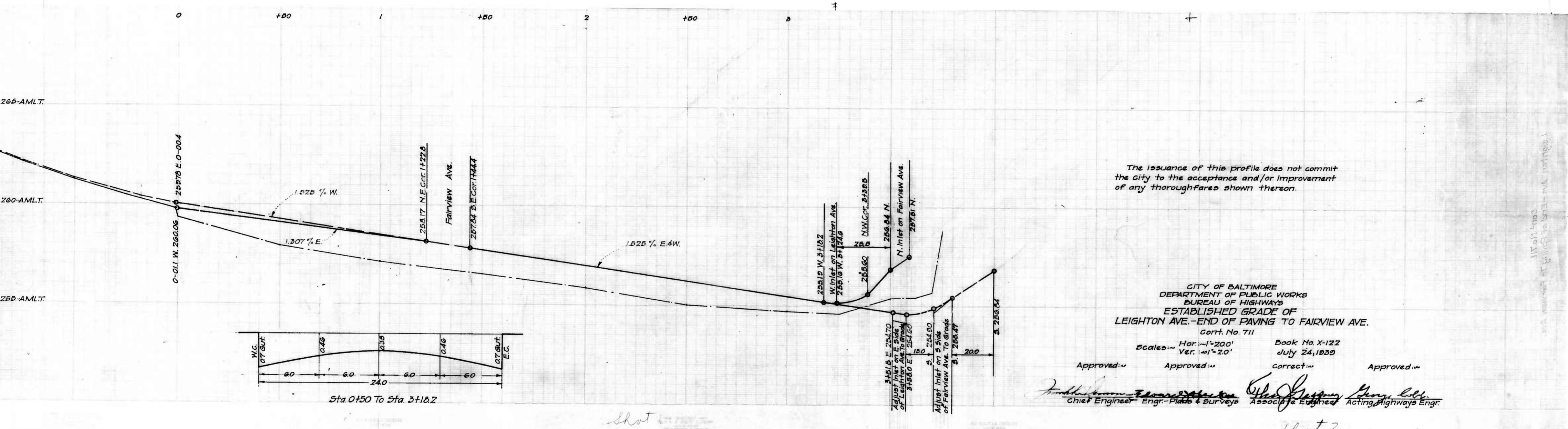
The issuance of this plan does not commit the city to the acceptance and/or improvement of any thoroughfares shown thereon.  
 All Streets to have 100' radius circles.  
 All Alleys to have 60' radius circles.

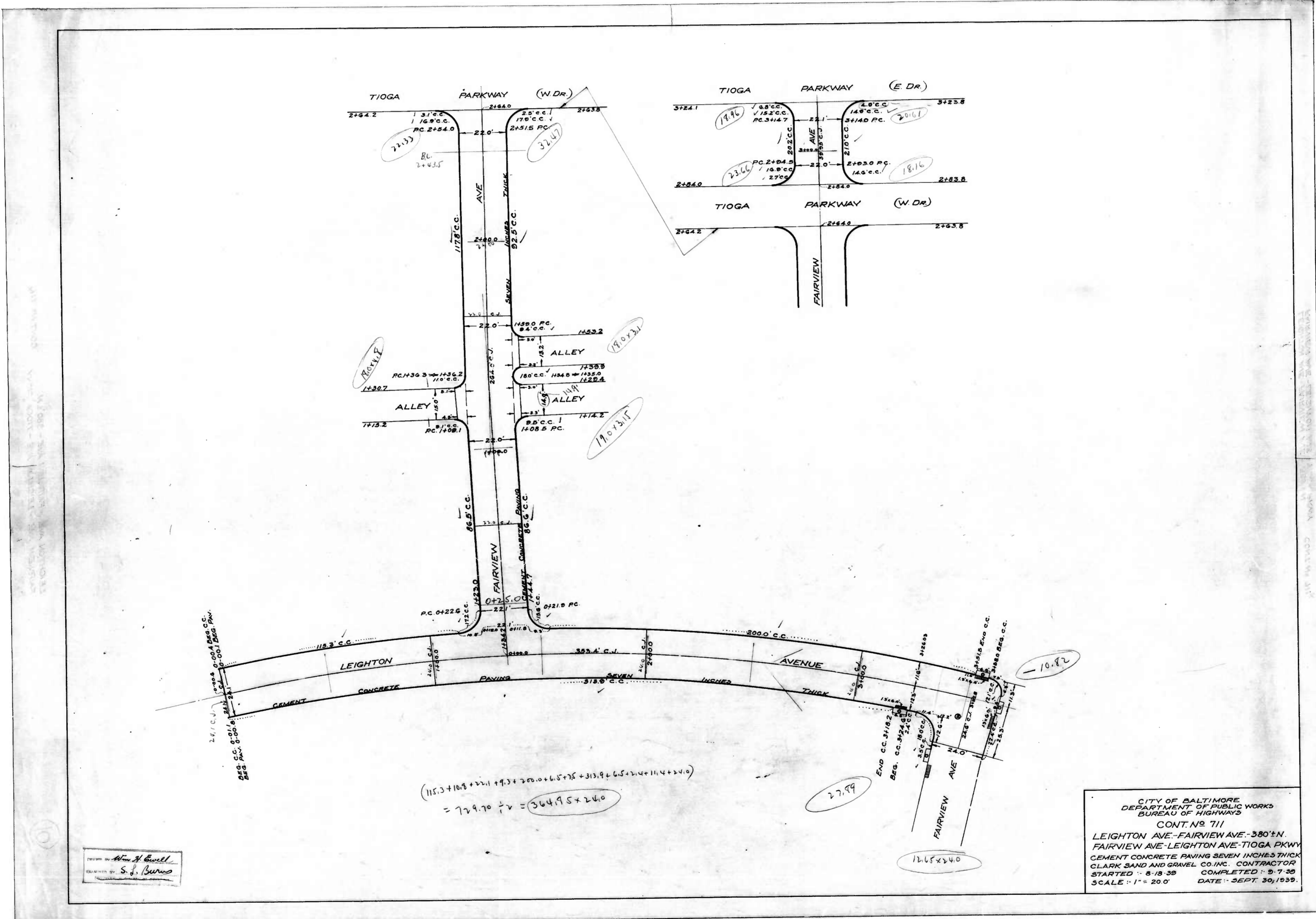
CITY OF BALTIMORE  
 DEPARTMENT OF PUBLIC WORKS  
 BUREAU OF HIGHWAYS  
 LAYOUT  
 LEIGHTON AVE. - END OF PRES. PAV. TO FAIRVIEW AVE.  
 FAIRVIEW AVE. - LEIGHTON AVE. TO TIOGA PKWY.  
 Cont. No 711  
 Scale: 1" = 200'  
 Book X-122-Pgs. 55455  
 July 20, 1939

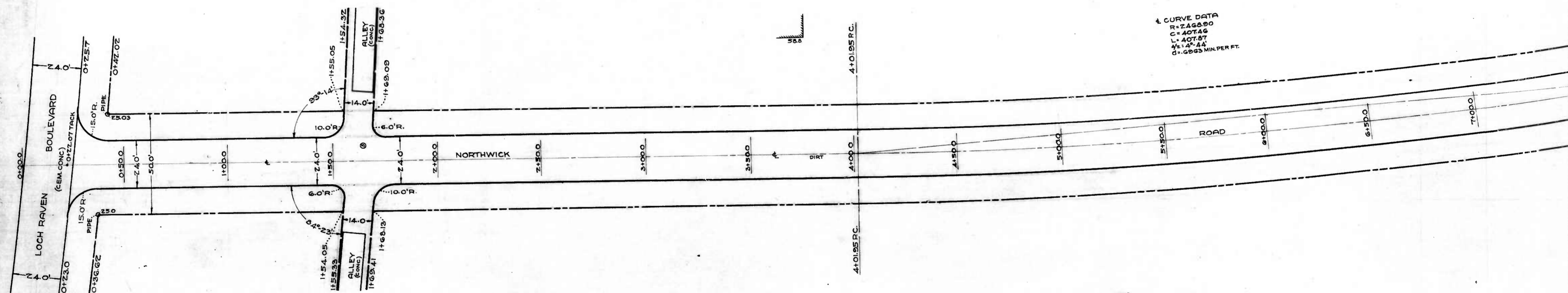
Approved: \_\_\_\_\_ Approved: \_\_\_\_\_ Correct: \_\_\_\_\_ Approved: \_\_\_\_\_  
 Chief Engineer, Engr. Plans & Surveys Associate Engineer Acting Highways Engr.

Sheet 1

Sheet 2



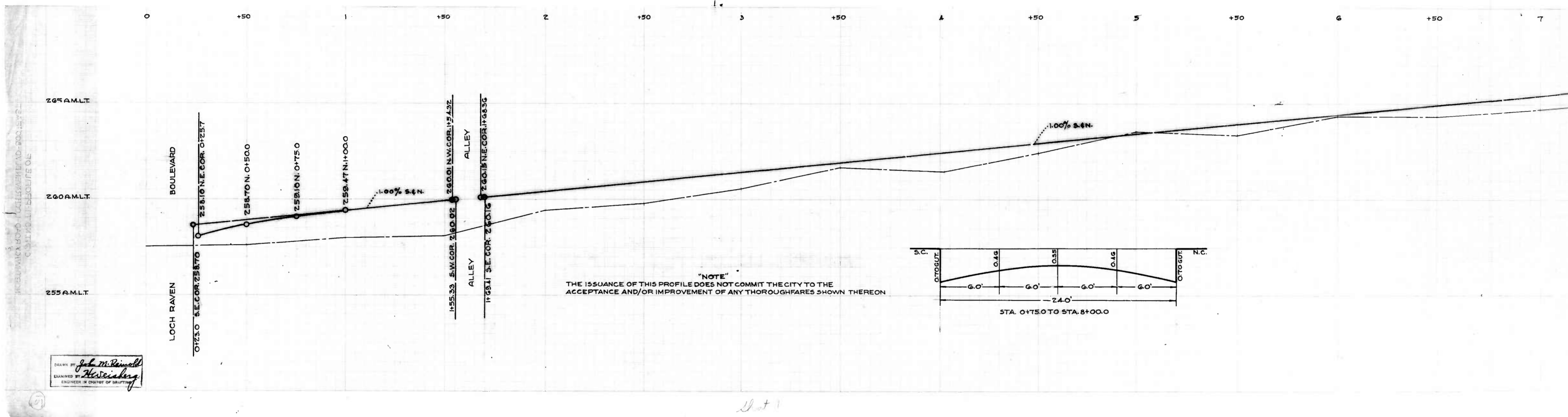




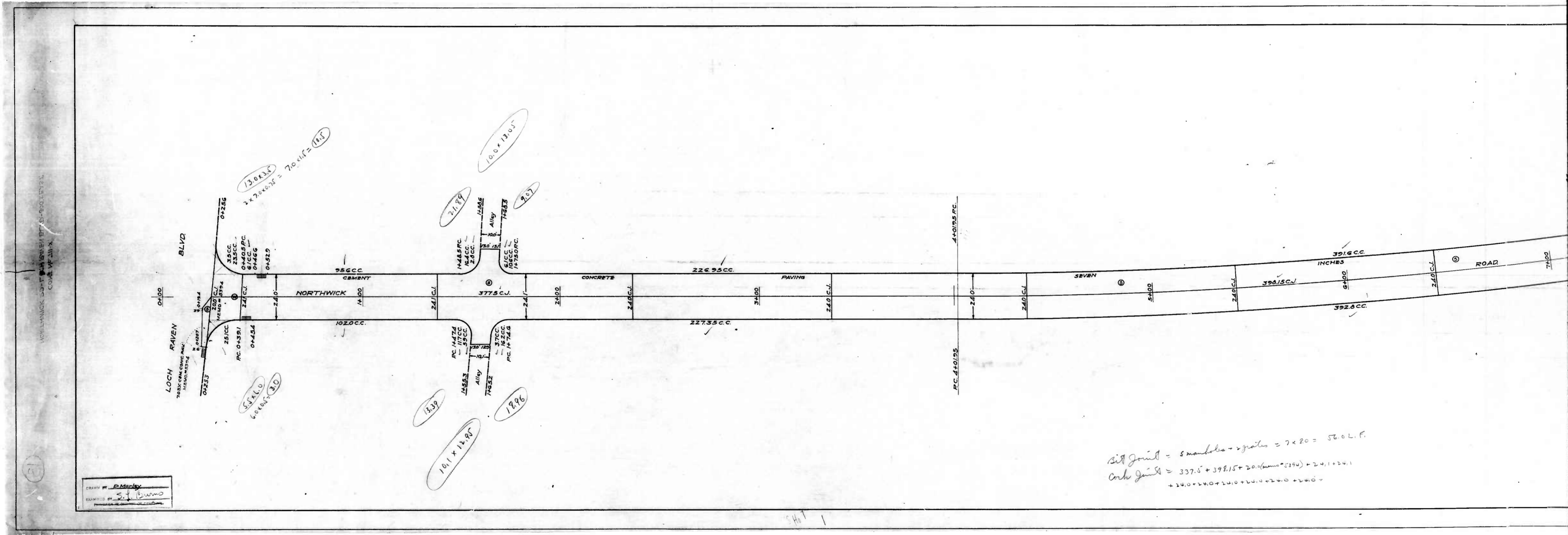
† CURVE DATA  
 R=2466.50  
 C=40746  
 L=407.87  
 Δ=147.44  
 Δ=69.53 MIN PER FT.

"NOTE"  
 THE ISSUANCE OF THIS PLAN DOES NOT COMMIT THE CITY TO THE  
 ACCEPTANCE AND/OR IMPROVEMENT OF ANY THOROUGHFARES SHOWN THEREON

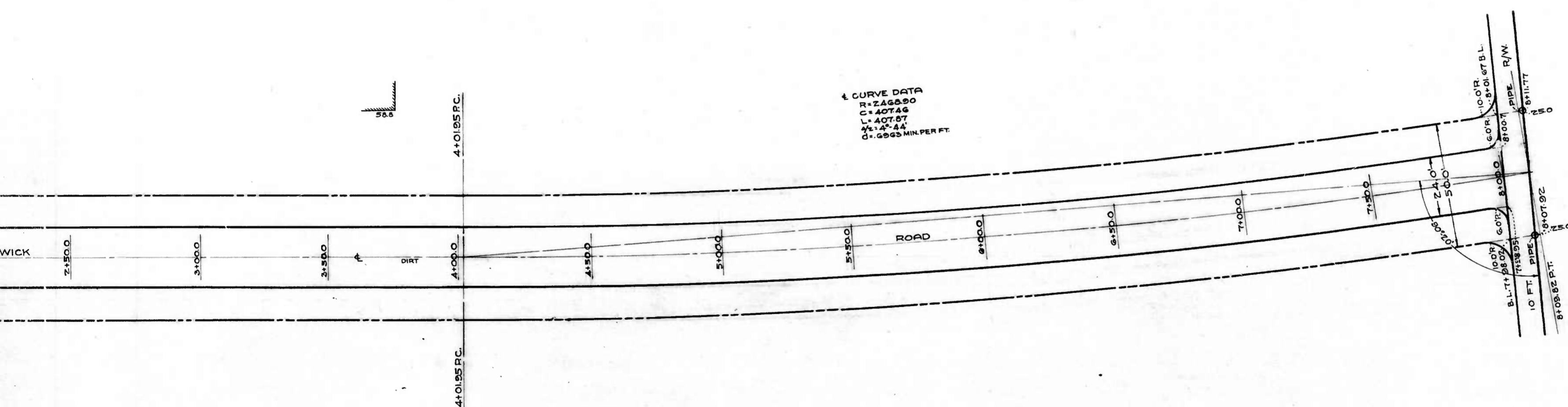
DESIGNED BY *John A. Dinnell*  
 EXAMINED BY *Hesterberg*  
 ENGINEER & SURVEYOR



DRAWN BY *John M. Reinold*  
 EXAMINED BY *Heiseberg*  
 ENGINEER IN CHARGE OF SURVEYING



$Silt\ Joints = 5\ manholes + 2\ joints = 7 \times 20 = 560\ L.F.$   
 $Curb\ Joints = 337.5 + 398.15 + 20.4(\text{same as } 510) + 24.1 + 24.1$   
 $+ 14.0 + 14.0 + 14.0 + 14.0 + 14.0 + 14.0 =$



CURVE DATA  
 R=2465.50  
 C=407.46  
 L=407.87  
 Δ=1° 44'  
 G=0.003 MIN PER FT.

NOTE  
 THE ISSUANCE OF THIS PLAN DOES NOT COMMIT THE CITY TO THE  
 ACCEPTANCE AND/OR IMPROVEMENT OF ANY THOROUGHFARES SHOWN THEREON



CITY OF BALTIMORE  
 DEPARTMENT OF PUBLIC WORKS  
 BUREAU OF HIGHWAYS  
 PLAN OF  
 NORTHWICK ROAD-LOCH RAVEN BLVD-800' EAST  
 SCALE: 1"=20.0' JULY 7, 1939  
 BOOK-X-110

CONT. NO. 711

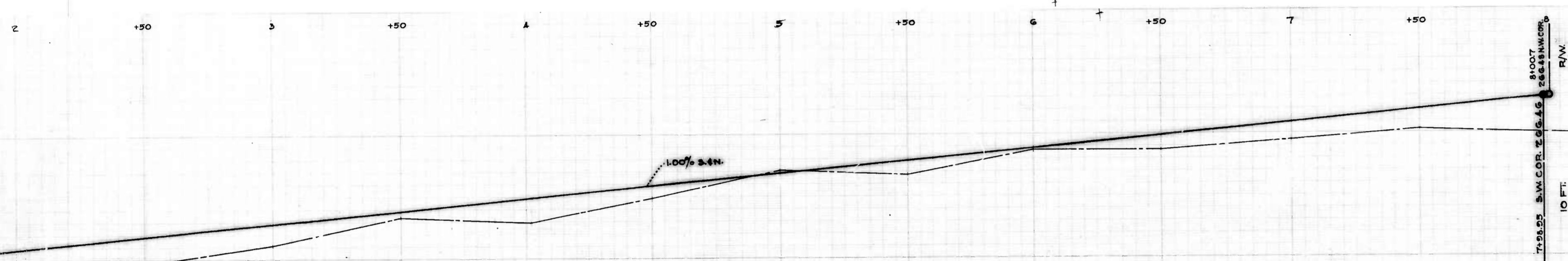
CORRECT APPROVED  
*[Signature]*  
 ASSOCIATE ENGINEER ACTING HIGHWAY ENGINEER

APPROVED APPROVED  
*[Signature]* *[Signature]*  
 ENGR PLANS & SURVEYS CHIEF ENGINEER

111

Sheet -





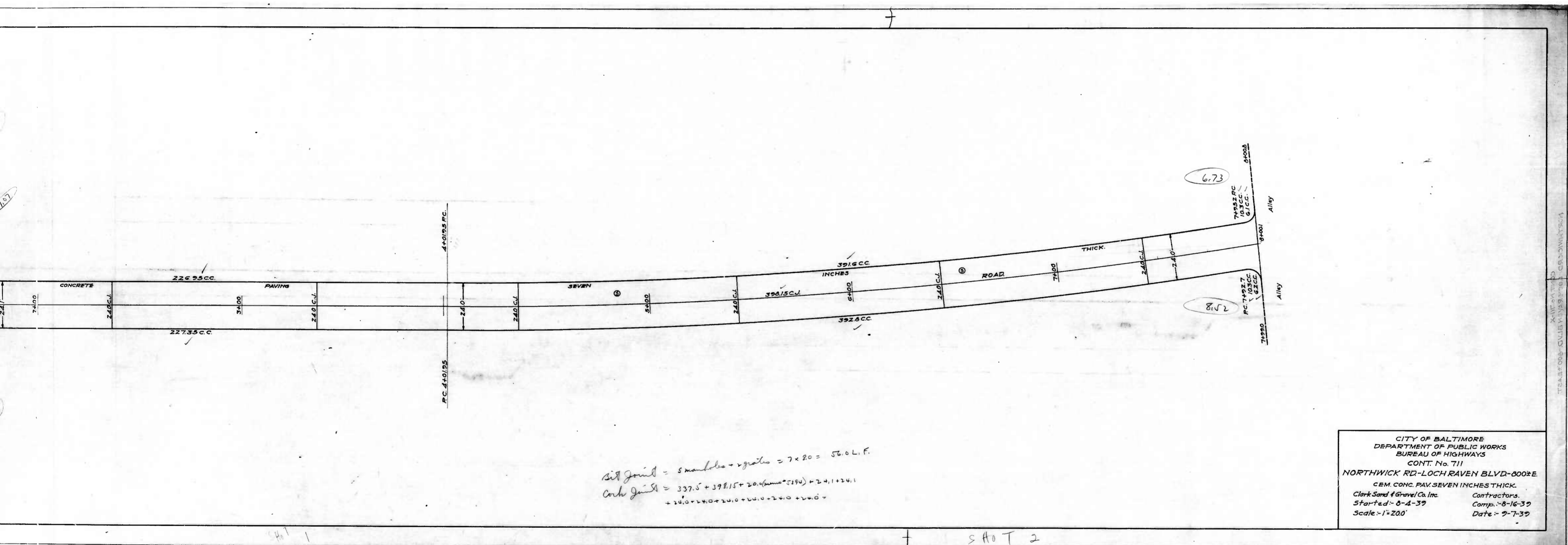
1.00% S.4N.

**"NOTE"**  
THE ISSUANCE OF THIS PROFILE DOES NOT COMMIT THE CITY TO THE ACCEPTANCE AND/OR IMPROVEMENT OF ANY THOROUGHFARES SHOWN THEREON



CITY OF BALTIMORE  
 DEPARTMENT OF PUBLIC WORKS  
 BUREAU OF HIGHWAYS  
 PROFILE OF  
 NORTHWICK ROAD-LOCH RAVEN BLVD-800<sup>th</sup> EAST  
 SCALE: HOR: 1"=20.0' JULY 7, 1929  
 VER: 1"=2.0' BOOK-X-110  
 CONT. NO. 711

CORRECT APPROVED  
*Herbert J. ...*  
 ASSOCIATE ENGINEER ACTING HIGHWAY ENGINEER  
 APPROVED APPROVED  
*...*  
 ENGR. PLANS & SURVEYS CHIEF ENGINEER



Sid Joint = 5 manholes + 2 grates = 7 x 20 = 56.0 L.F.  
 Curb Joint = 337.5 + 398.15 + 20.0 (sum = 519.0) = 24.11241  
 + 20.0 + 24.0 + 24.0 + 24.0 + 24.0 + 24.0 =

S H O T 2

CITY OF BALTIMORE  
 DEPARTMENT OF PUBLIC WORKS  
 BUREAU OF HIGHWAYS  
 CONT. No. 711  
 NORTHWICK RD-LOCHRAVEN BLVD-0002E  
 CEM. CONC. PAV. SEVEN INCHES THICK.  
 Clark Sand & Gravel Co. Inc. Contractors.  
 Started - 8-4-39 Comp. - 8-16-39  
 Scale - 1" = 20' Date - 7-7-39