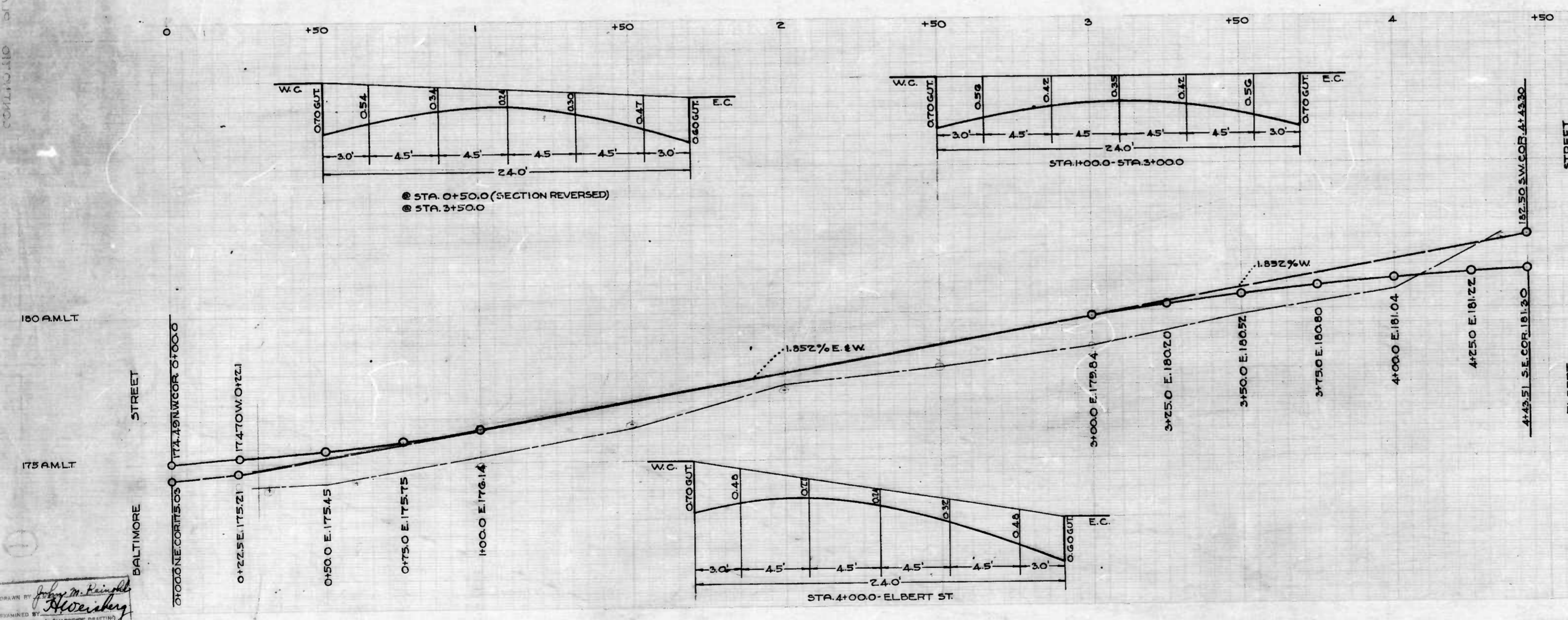


NOTE:-
THE ISSUANCE OF THIS PLAN & PROFILE DOES NOT
COMMIT THE CITY TO THE ACCEPTANCE AND/OR
IMPROVEMENT OF ANY THOROUGHFARES SHOWN
THEREON.



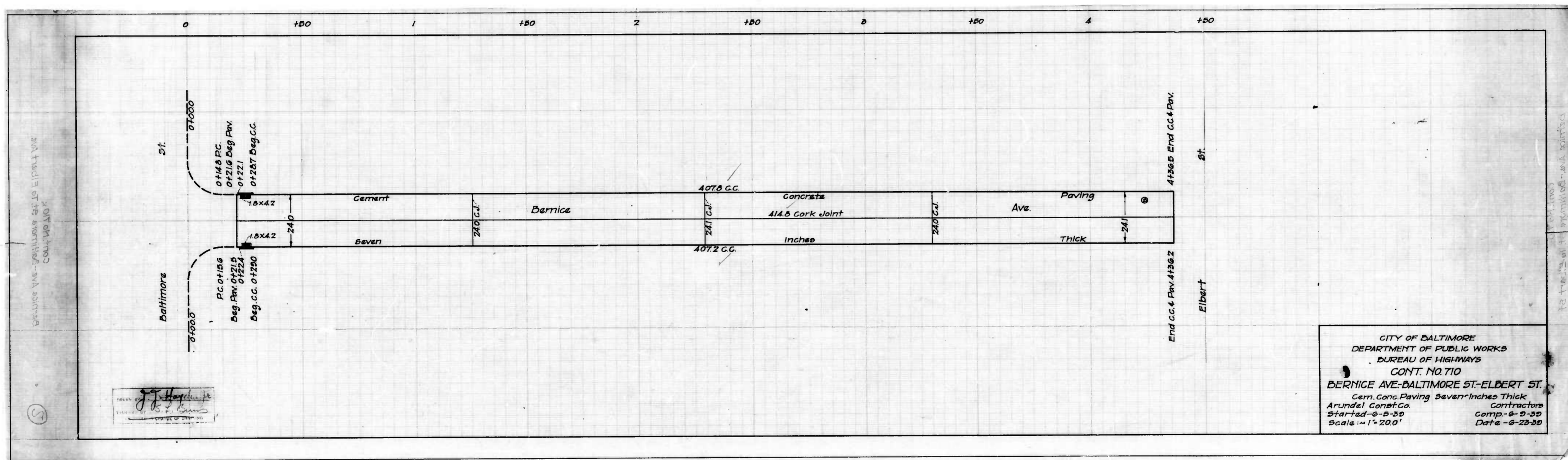
CITY OF BALTIMORE
DEPARTMENT OF PUBLIC WORKS
BUREAU OF HIGHWAYS
PLAN & PROFILE
BERNICE AVE. BALTIMORE ST. ELBERT ST.
PLAN 1"=20.0' SURVEY BOOK
SCALES: HOR. 1"=20.0' NO. X-113
PROF. VER. 1"=2.0' APRIL 28, 1938
CONT. NO. 710

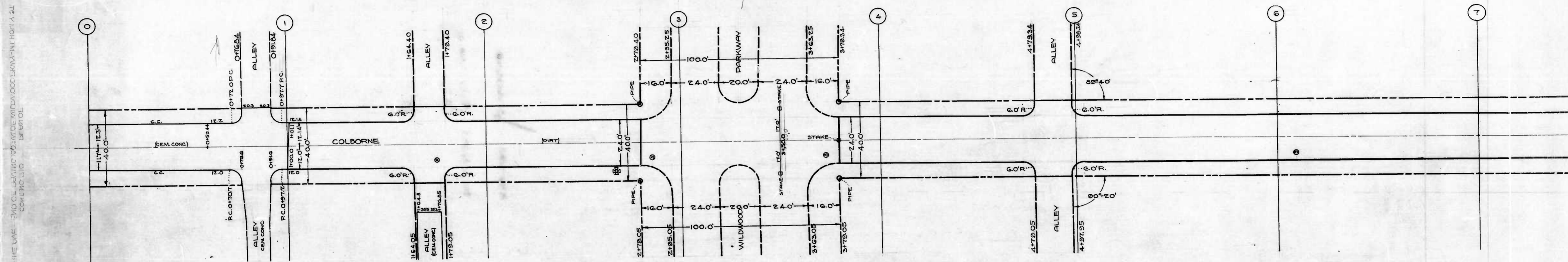
CORRECTED: *John K. ...* ASSOCIATE ENGINEER
APPROVED: *Henry G. ...* HIGHWAYS ENGINEER
APPROVED: *Edward ...* ENGR. PLANS & SURVEYS
APPROVED: *...* ACTING CHIEF ENGINEER

SECTION OF THE CITY OF BALTIMORE

BERNICE AVE. BALTIMORE ST. ELBERT ST.
COMPARISON PLAN & PROFILE

DESIGNED BY: *John K. ...*
ENGINEER BY: *Henry G. ...*

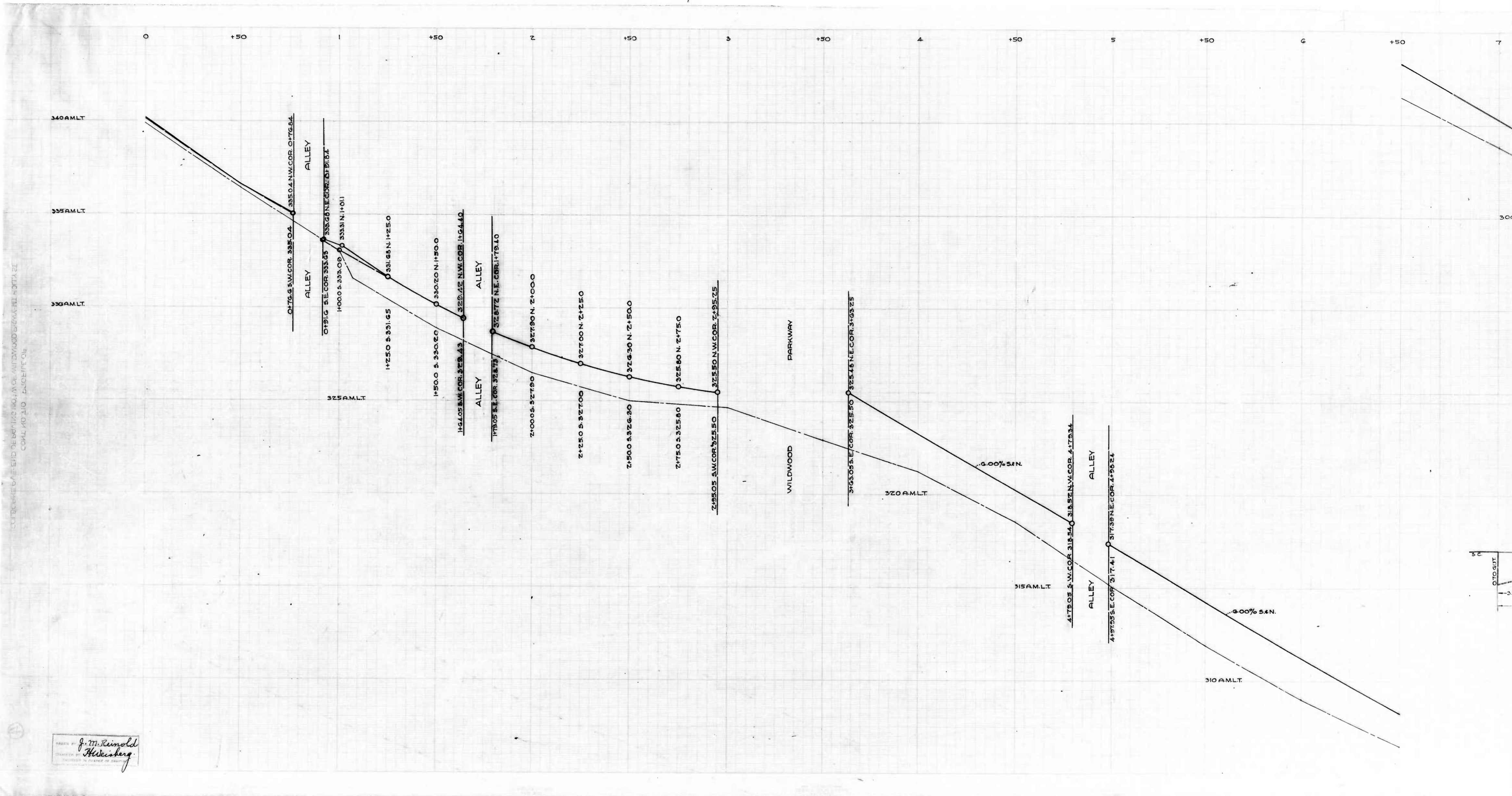




NOTE:-
 THE ISSUANCE OF THIS PLAN DOES NOT COMMIT THE CITY TO THE ACCEPTANCE AND/OR IMPROVEMENT OF ANY THOROUGHFARES SHOWN THEREON.

DRAWN BY *J. M. Reinold*
 ENGINEER IN CHARGE OF DEPT.

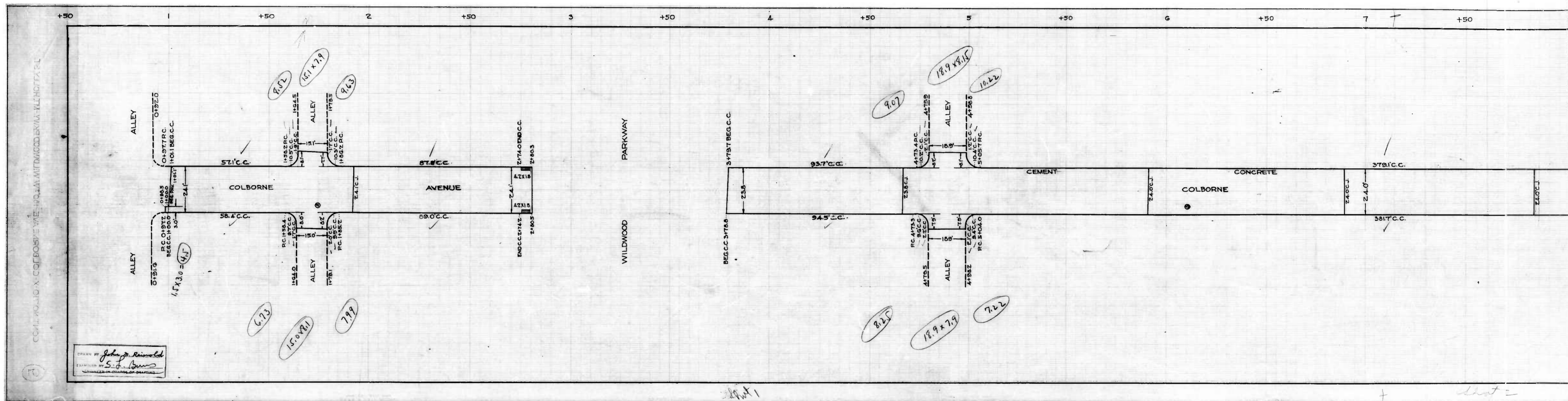
Sheet 1

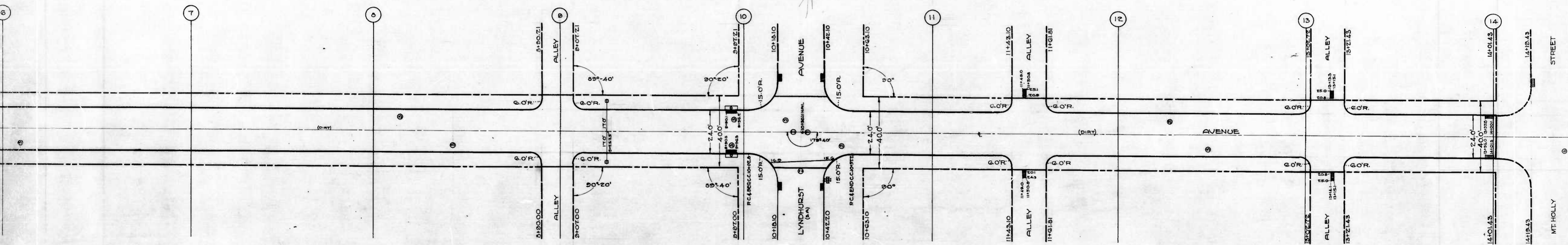


DESIGNED BY
J. M. Reinold
Heiseberg
 ENGINEER IN CHARGE OF PROJECT

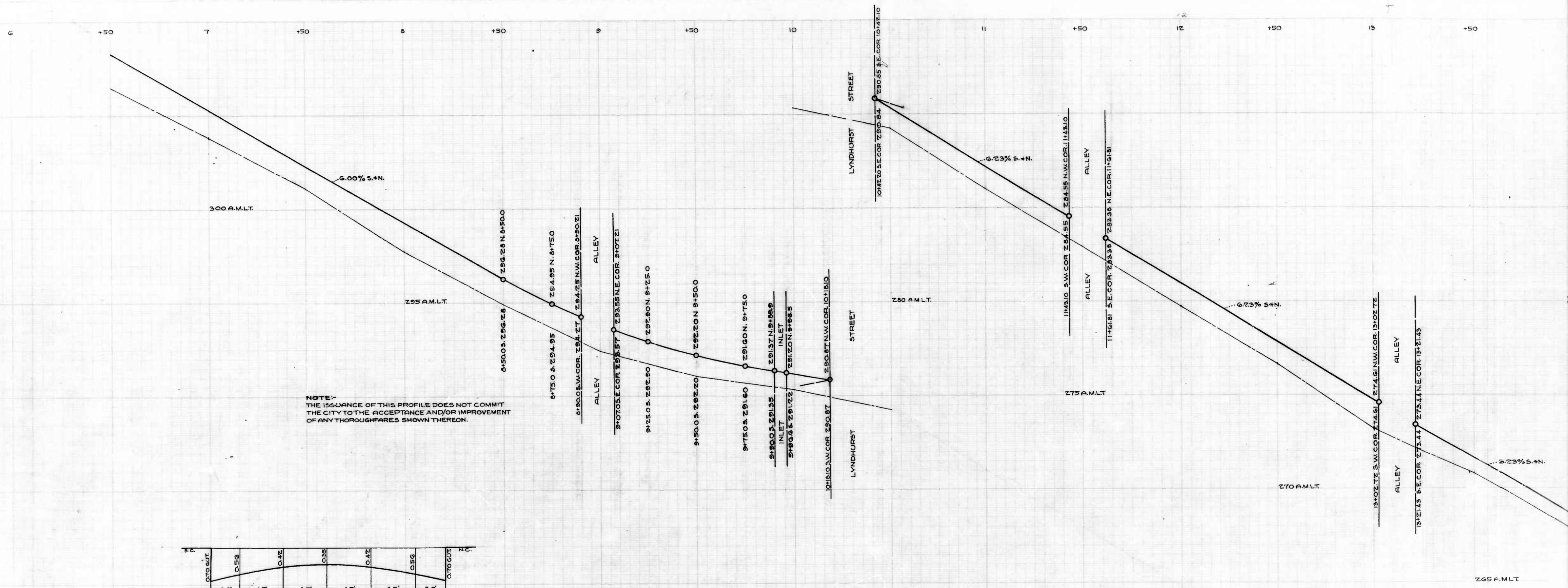
CUTTING EDGE OF ROAD OR SIDE OF WILDWOOD PARKWAY IS LOCATED BY DOTTED LINE
 CONT. 100' TO 5'40' FROM 0+0

3' 0" - 1' 0" - 0' 0" - 1' 0" - 3' 0" - 6' 0" - 9' 0" - 12' 0"

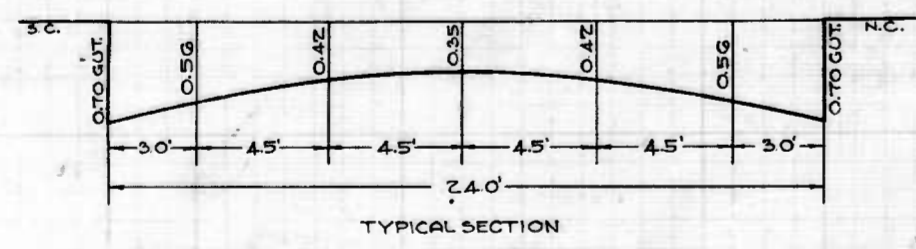




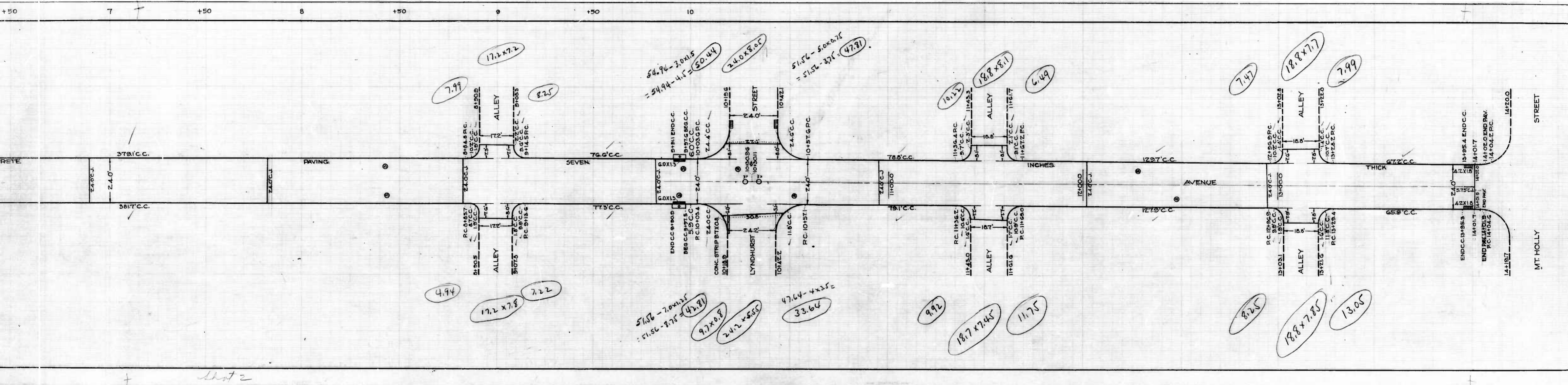
NOTE:-
THE ISSUANCE OF THIS PLAN DOES NOT COMMIT THE
CITY TO THE ACCEPTANCE AND/OR IMPROVEMENT
OF ANY THOROUGHFARES SHOWN THEREON.



NOTE:-
 THE ISSUANCE OF THIS PROFILE DOES NOT COMMIT
 THE CITY TO THE ACCEPTANCE AND/OR IMPROVEMENT
 OF ANY THOROUGHFARES SHOWN THEREON.

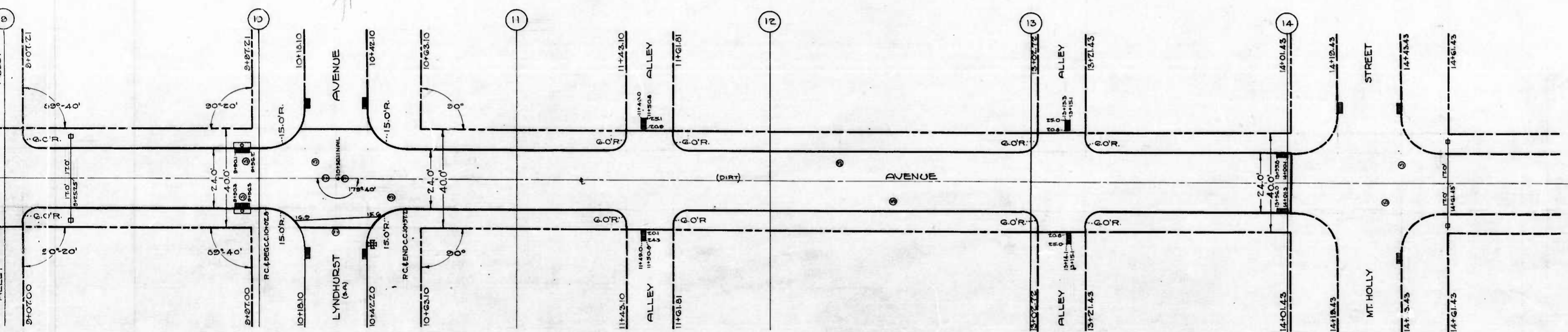


Handwritten mark: 11012



CIVIL
 DEPARTMENT
 COLBORNE AVENUE
 CEMENT CONCRETE
 ARUNDEL COUNTY
 STARTED: 8-10-3
 SCALE: 1"=20'

Sheet 2



CITY OF BALTIMORE
 DEPARTMENT OF PUBLIC WORKS
 BUREAU OF HIGHWAYS
 LAYOUT OF
 COLBORNE AVE.-END OF PAVING 100' W. OF WILDWOOD PKWY-MT HOLLY ST.
 SCALE: 1"=200' APRIL 6, 1939
 BOOK C-710

CONT. NO. 710

CORRECT
John R. Kipp
 ASSOCIATE ENGINEER

APPROVED:-
Henry L. Kelly
 HIGHWAYS ENGINEER

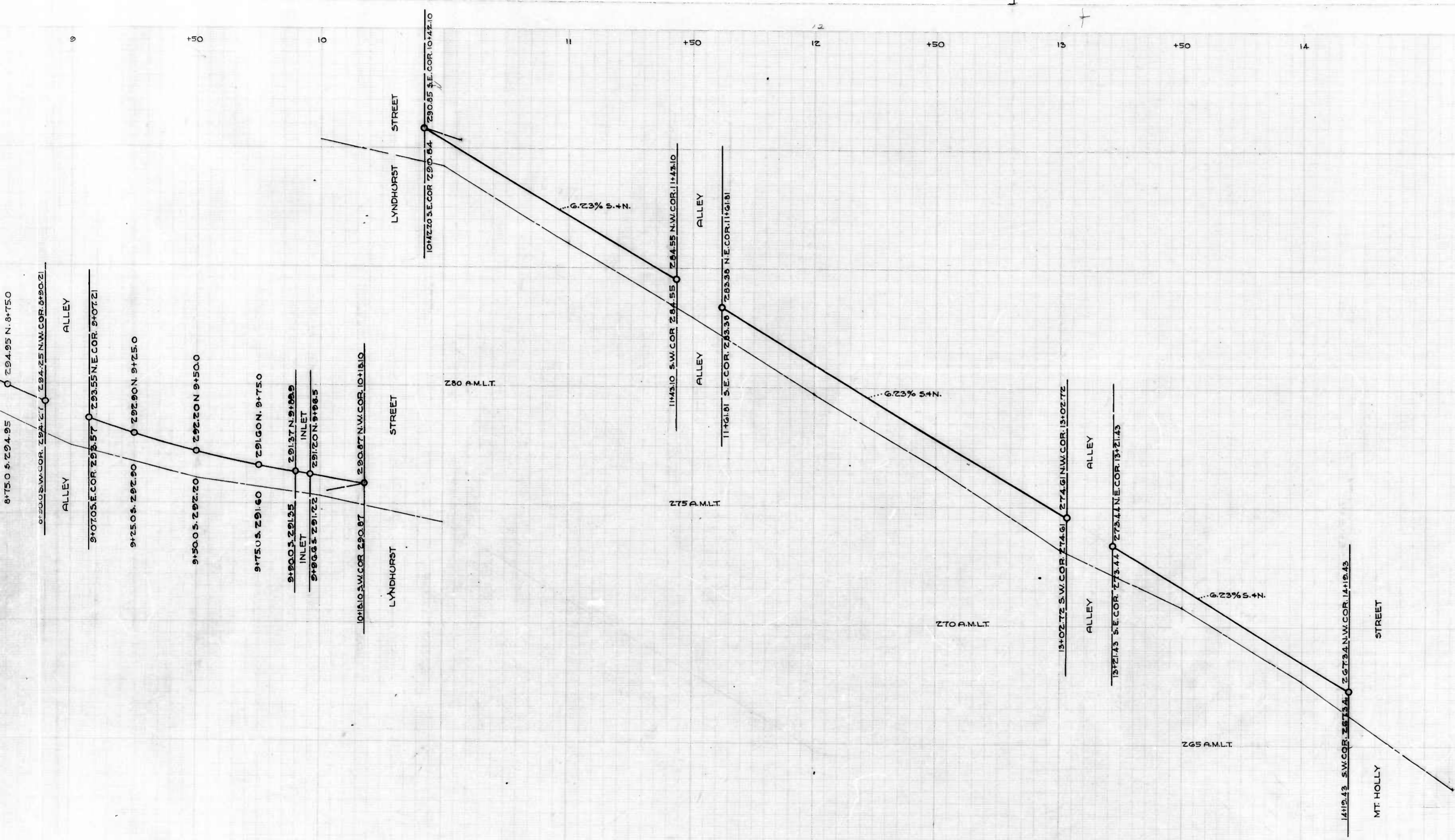
APPROVED:-
Edward J. ...
 ENGR. PLANS & SURVEYS

APPROVED:-
...
 ACTING CHIEF ENGINEER

Sheet 2

Sheet 3

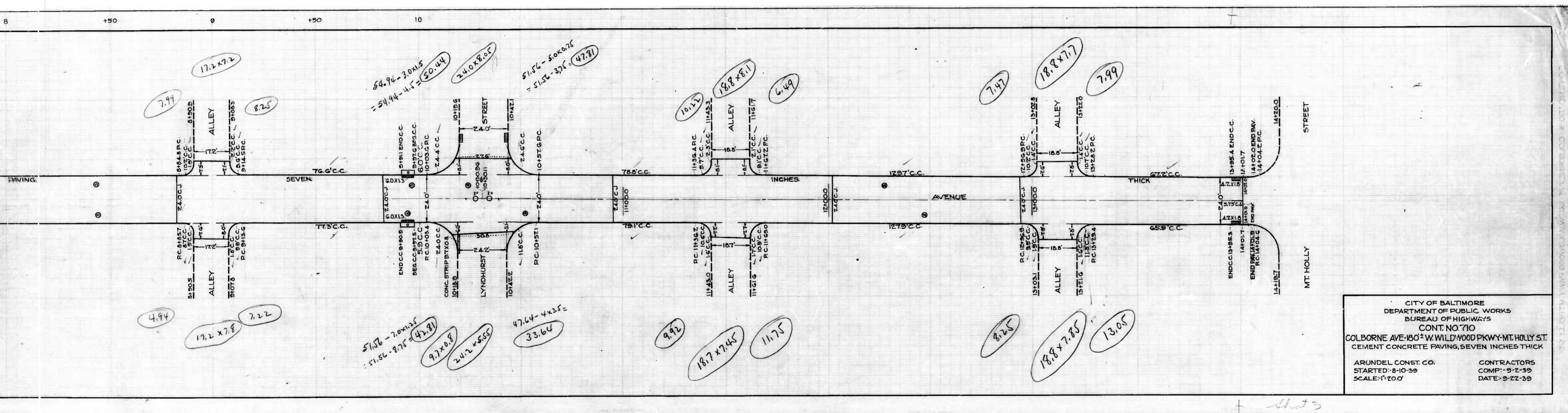
CITY OF BALTIMORE
 DEPARTMENT OF PUBLIC WORKS
 BUREAU OF HIGHWAYS
 LAYOUT OF
 COLBORNE AVE.-END OF PAVING 100' W. OF WILDWOOD PKWY-MT HOLLY ST.
 SCALE: 1"=200' APRIL 6, 1939
 BOOK C-710

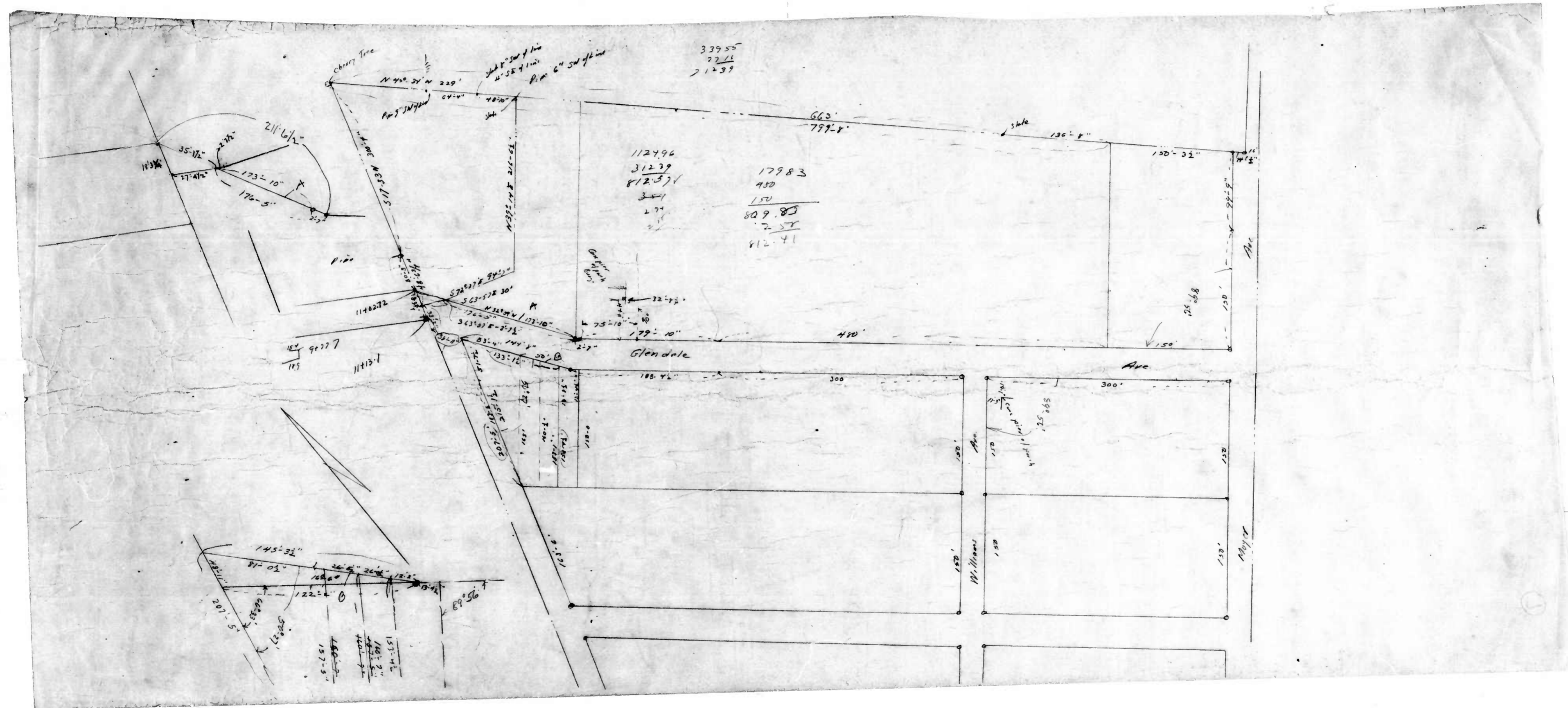


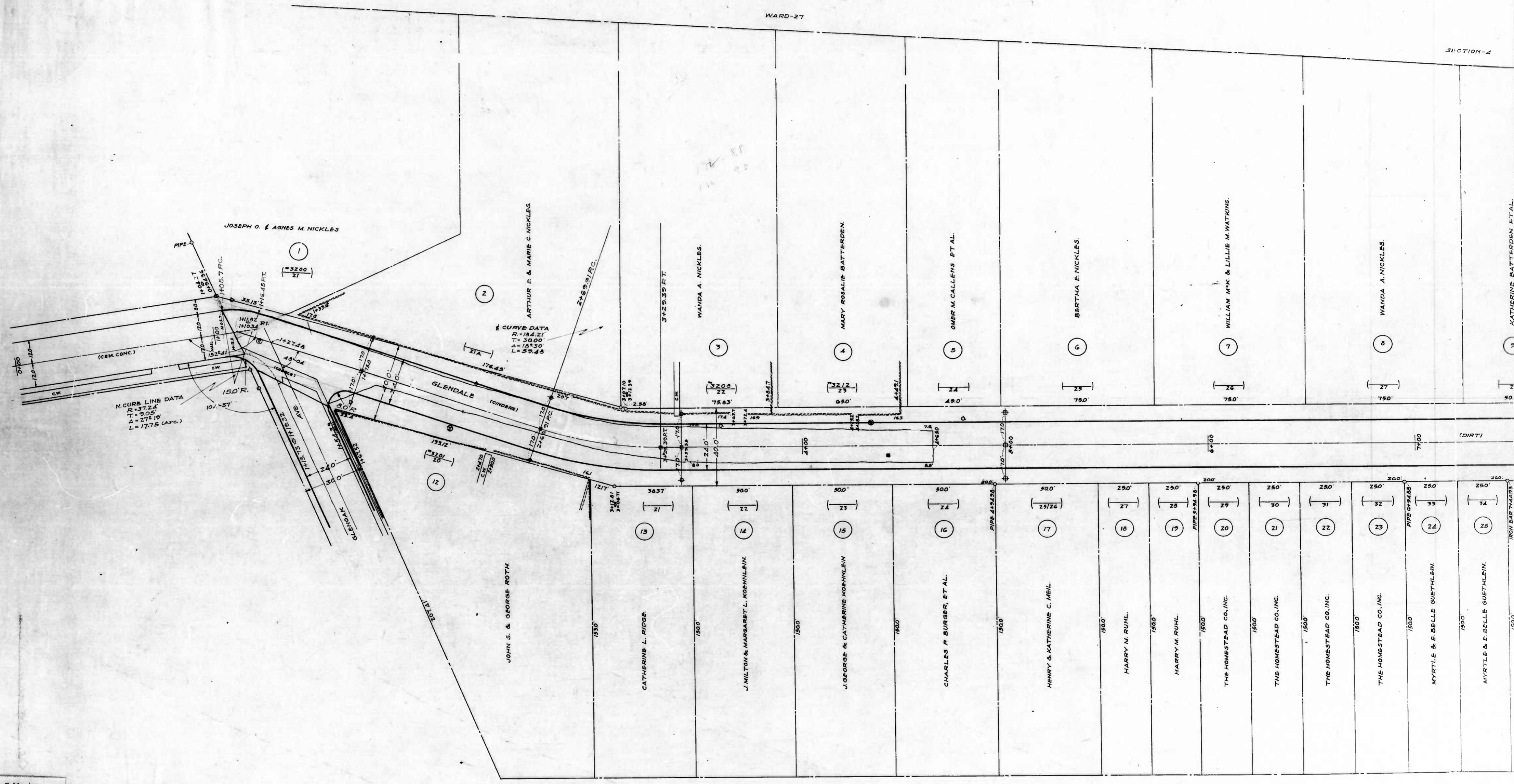
CITY OF BALTIMORE
 DEPARTMENT OF PUBLIC WORKS
 BUREAU OF HIGHWAYS
 PROFILE OF
 COLBORNE AVE. END OF PAVING 100' W. OF WILDWOOD PKWY. MT. HOLLY ST.
 SCALES: HOR: 1"=20.0' APRIL 18, 1939
 VER: 1"=2.0' BOOK C-710
 CL: 24.0' BL: 40.0'
 CONT. NO. 710

CORRECT APPROVED
[Signature] *[Signature]*
 ASSOCIATE ENGINEER HIGHWAYS ENGINEER
 APPROVED APPROVED
[Signature] *[Signature]*
 ENGR. PLANS & SURVEYS ACTING CHIEF ENGINEER

2-73



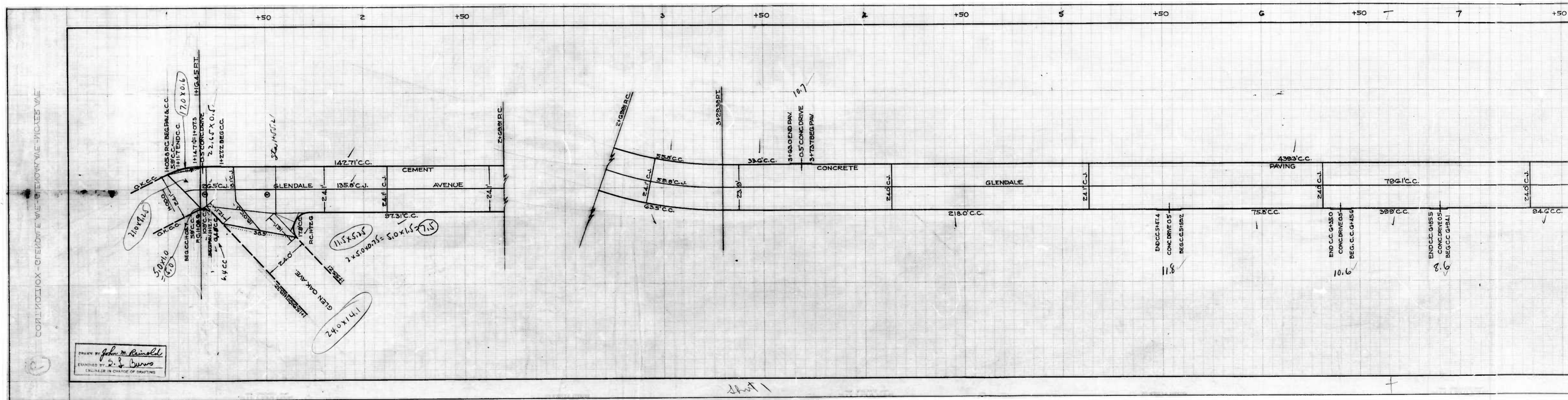




SECTION-A

BLOCK-11

p. Marley
S. H. Hevener
ENGINEERS & SURVEYORS



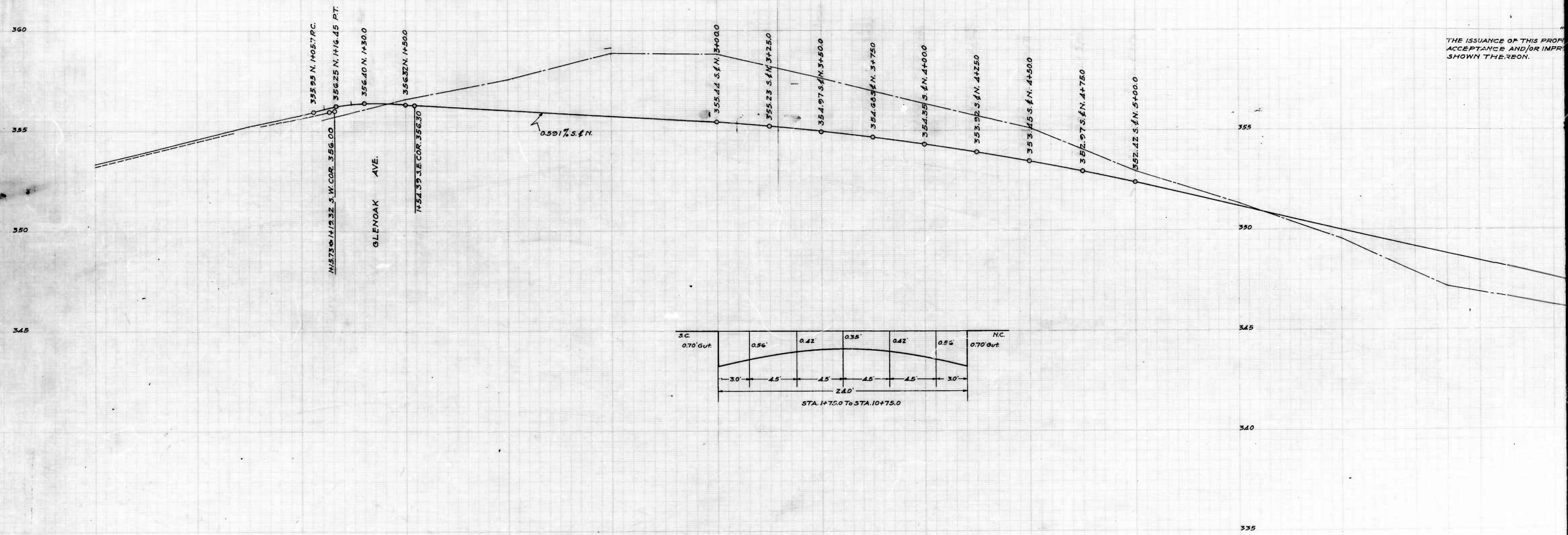
COPYRIGHT - GLENDALE VALLEY ENGINEERING

DRAWN BY *John M. Reynolds*
 ENGINEER IN CHARGE OF DRAFTING
 CHECKED BY *S. J. Burns*

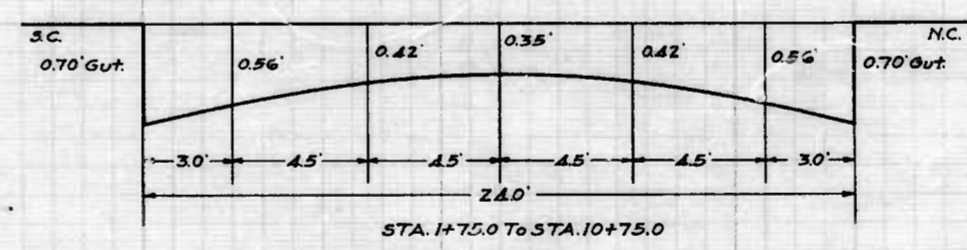
Sheet 1

710-112

CONCRETE PAVEMENT - 4" ASPHALT
COURSE

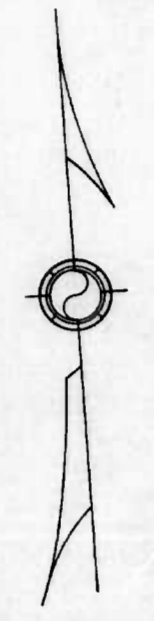
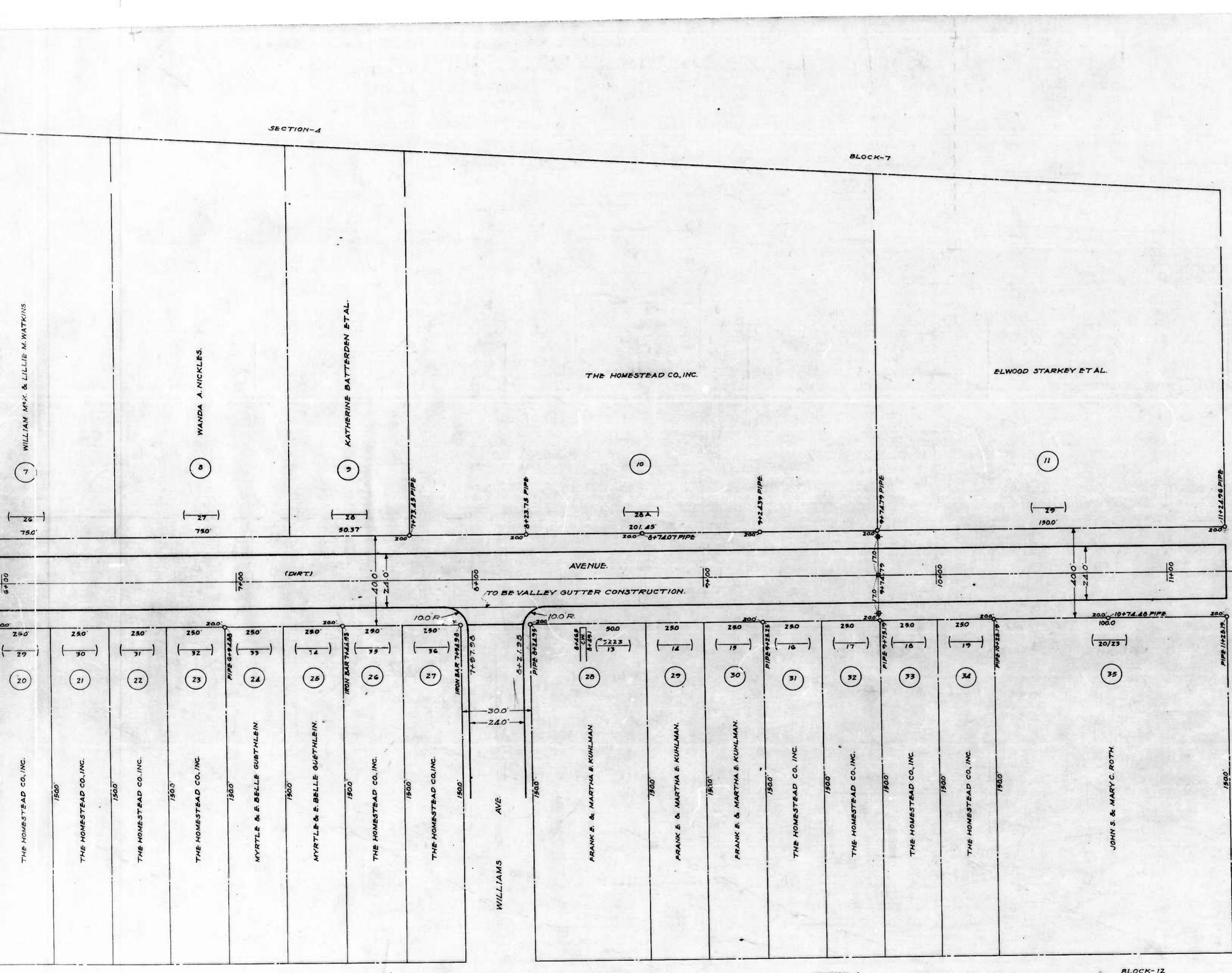


THE ISSUANCE OF THIS PROFILE
ACCEPTANCE AND/OR IMPROVEMENTS
SHOWN THEREON.



DESIGNED BY
D. Merley
H. Weisberg

Sheet 1



"NOTE"
 THE ISSUANCE OF THIS PLAN DOES NOT COMMIT THE CITY
 TO THE ACCEPTANCE AND/OR IMPROVEMENT OF ANY
 THOROUGHFARES SHOWN THEREON.

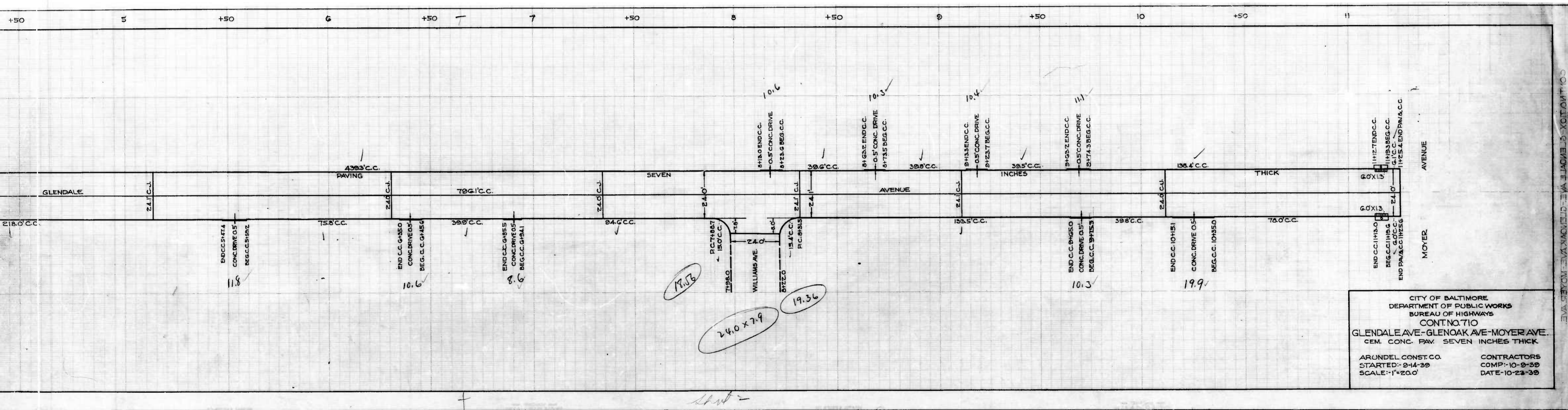
(No.) PLAT No.
 (No.) HOUSE OR DEV. LOT No.
 (No.) APPEAL TAX COURT LOT No.
 WARD No. 27
 SECTION No. 4
 BLOCK No. 7-11 & 12

FILED May 10-1939
 BY J. J. [Signature]
 PER [Signature]

CITY OF BALTIMORE
 DEPARTMENT OF PUBLIC WORKS
 BUREAU OF HIGHWAYS
 ASSESSMENT PLAT No. 545-A
 GLENDALE AVE. - GLENOAK AVE. - MOYER AVE.
 CONT. No. 710 MAY 1, 1939

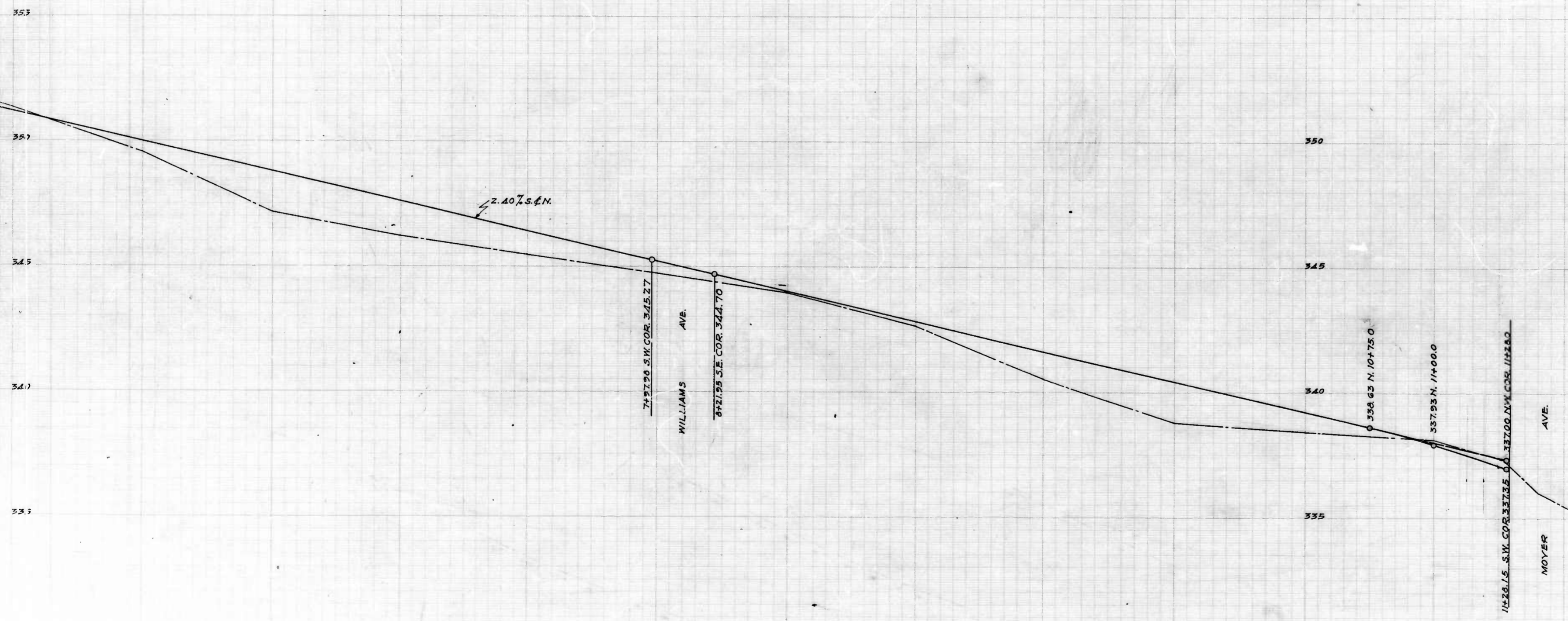
APPROVED: [Signature] ACTING CHIEF ENGINEER
 APPROVED: [Signature] ENGR. - PLANS & SURVEYS
 CORRECT: [Signature] ASSOCIATE ENGINEER
 APPROVED: [Signature] HIGHWAYS ENGINEER

GLENDALE AVE. - GLENOAK AVE. - MOYER AVE.
 BY [Signature] ATTEST [Signature] CLERK



CITY OF BALTIMORE
DEPARTMENT OF PUBLIC WORKS
BUREAU OF HIGHWAYS
CONT. NO. 710
GLENDAL AVE - GLENOAK AVE - MOYER AVE.
CEM. CONC. PAV. SEVEN INCHES THICK
ARUNDEL CONST. CO. CONTRACTORS
STARTED - 9-14-39 COMP. - 10-9-39
SCALE - 1" = 20.0' DATE - 10-23-39

"NOTE"
THE ISSUANCE OF THIS PROFILE DOES NOT COMMIT THE CITY TO THE
ACCEPTANCE AND/OR IMPROVEMENT OF ANY THOROUGHFARES
SHOWN THEREON.

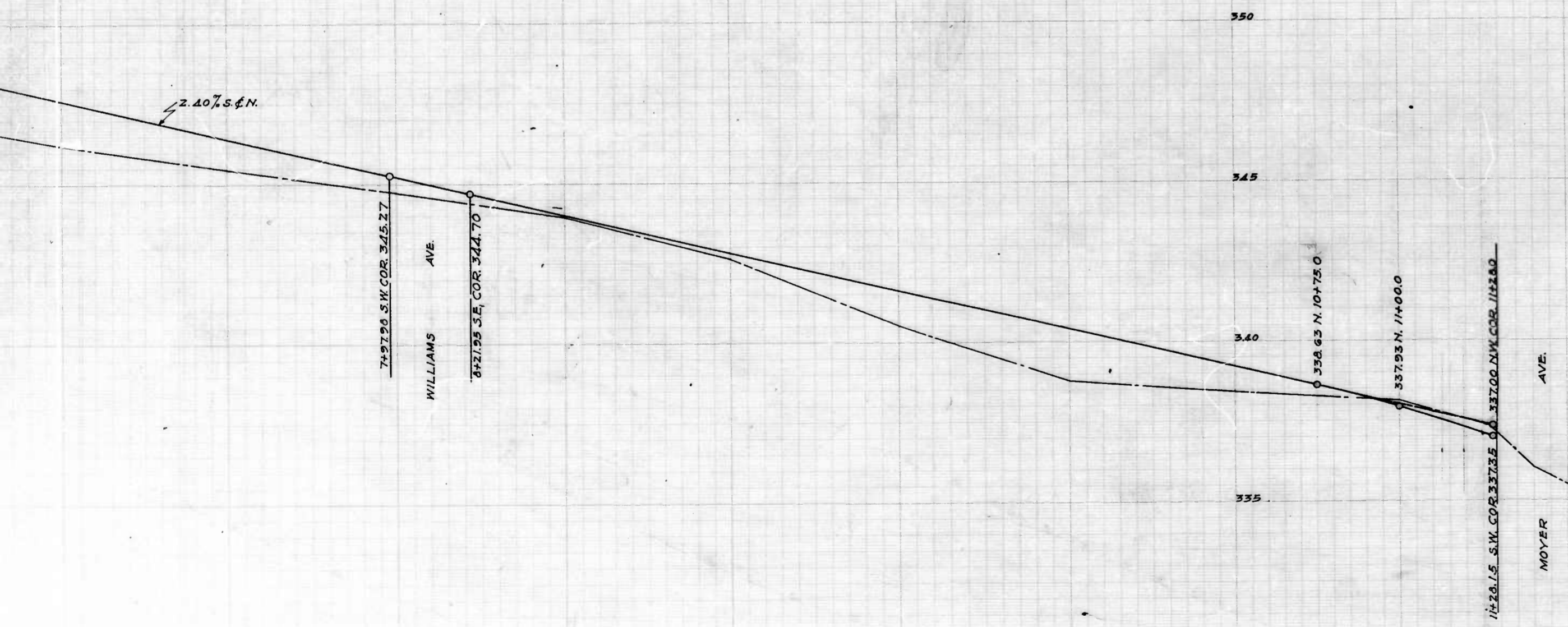


CITY OF BALTIMORE
DEPARTMENT OF PUBLIC WORKS
BUREAU OF HIGHWAYS
PROFILE OF
GLENDALE AVE - GLENOAK AVE - MOYER AVE.
CONT. No. 710
SCALE - HOR - 1" = 20.0'
VER - 1" = 2.0'
MAY 5, 1939

APPROVED: *[Signature]* ACTING CHIEF ENGINEER.
 APPROVED: *[Signature]* ENGR. PLANS & SURVEYS
 CORRECT: *[Signature]* ASSOCIATE ENGINEER
 APPROVED: *[Signature]* HIGHWAYS

sheet 2

"NOTE"
THIS PROFILE DOES NOT COMMIT THE CITY TO THE
AND/OR IMPROVEMENT OF ANY THOROUGHFARES
ON.



CITY OF BALTIMORE
DEPARTMENT OF PUBLIC WORKS
BUREAU OF HIGHWAYS
PROFILE OF
GLENDALE AVE - GLENOAK AVE - MOYER AVE.
CONT. No. 710

SCALE - HOR - 1" = 20.0'
VER - 1" = 2.0' MAY 5, 1939

APPROVED: - APPROVED: - CORRECT: - APPROVED: -

Edward Hecker
ACTING CHIEF ENGINEER

Edward Hecker
ENGR. PLANS & SURVEYS

John Kessinger
ASSO. ENGINEER

George Bell
HIGHWAYS ENGINEER

GLENDALE AVE - GLENOAK AVE - MOYER AVE
CONT. No. 710

Sheet 2

Sheet 3