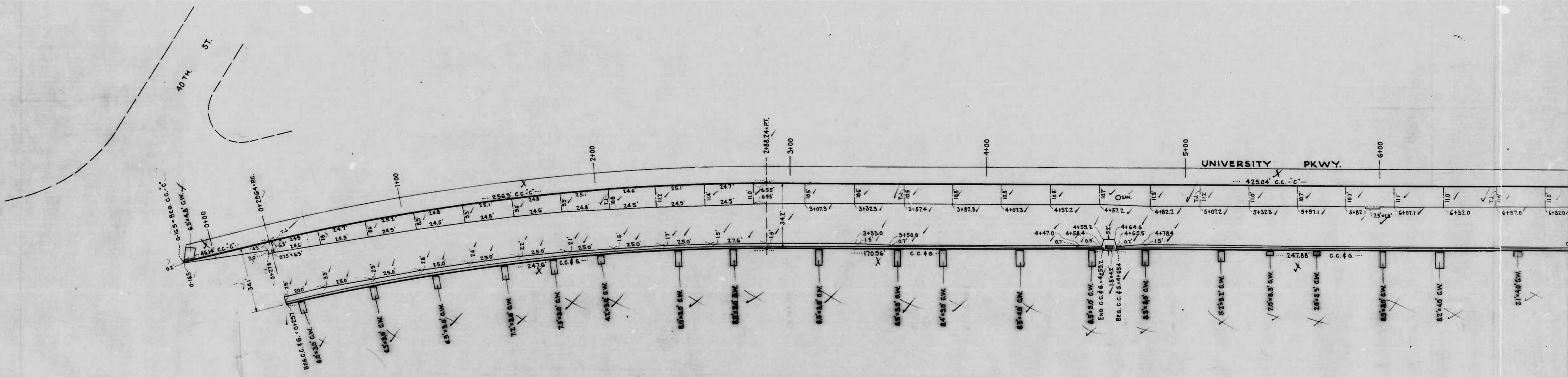


DRAWN BY J.H. SMITH & J.T.C.
 CHECKED BY [Signature]
 APPROVED BY [Signature]

38-20

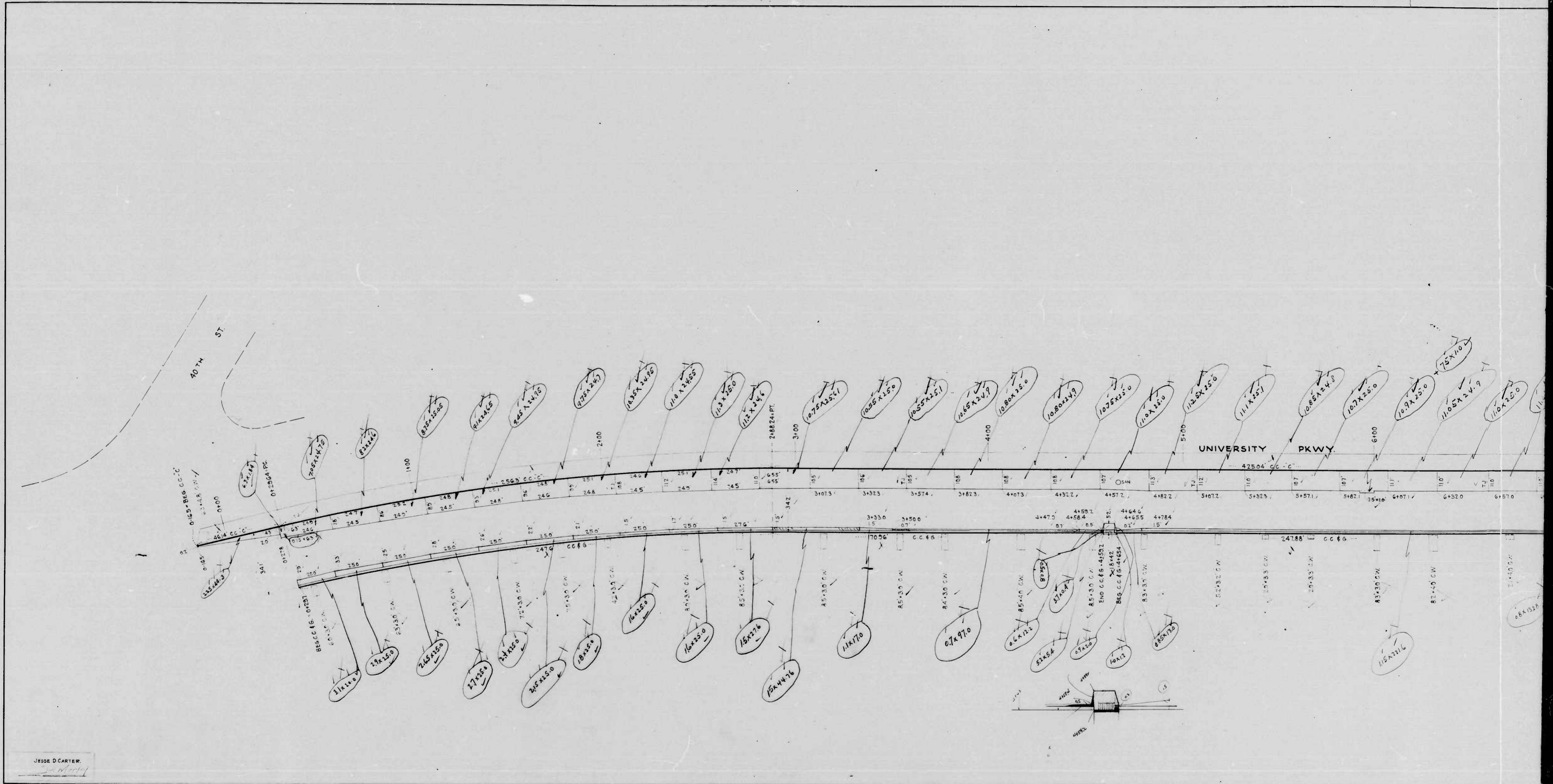
UNIVERSITY PKWY. STA. 0+00 TO 6+82.0

38-20

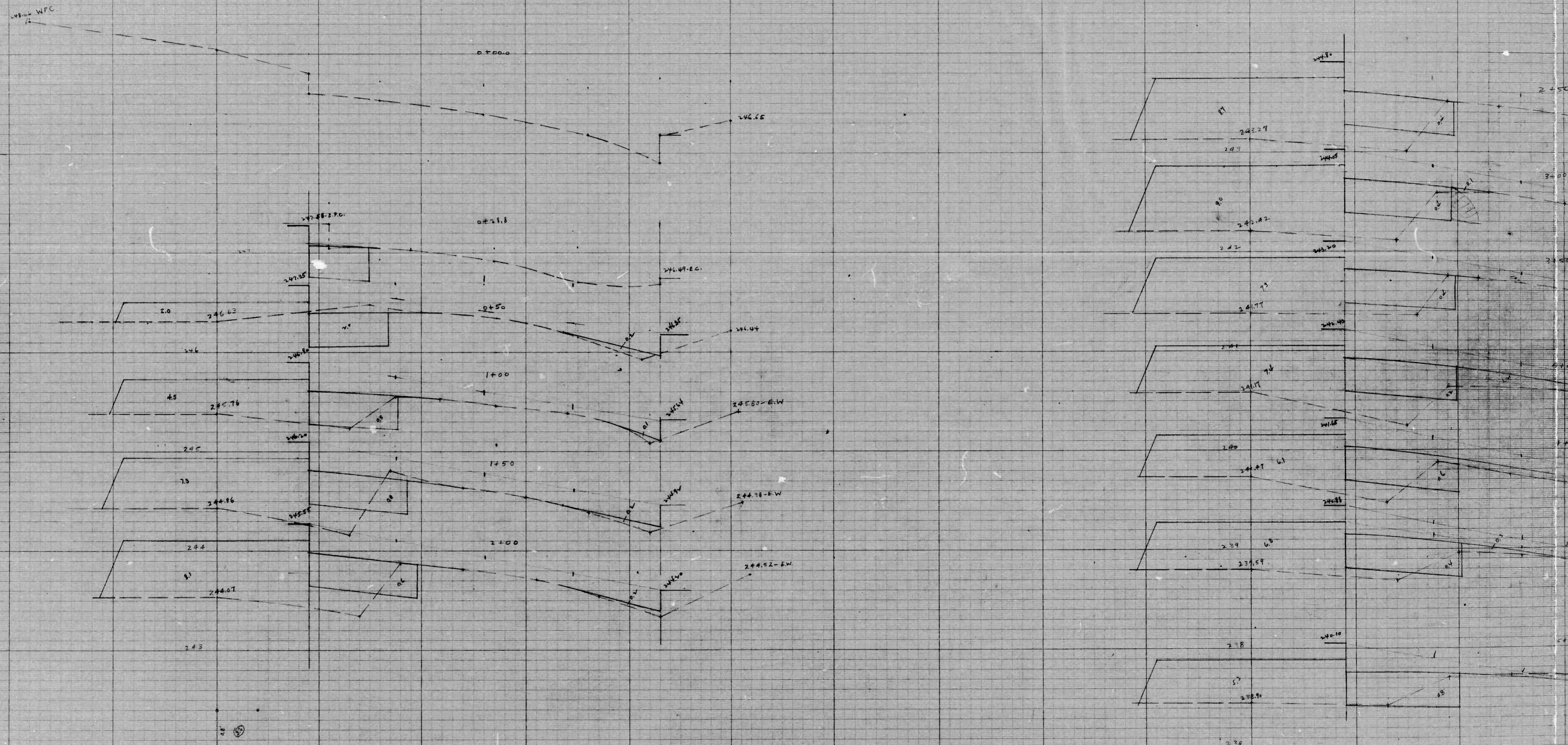


DESIGNED BY JESSE D. CARTER
 DRAWN BY *[Signature]*
 CHECKED BY *[Signature]*
 DATE 10/1/54

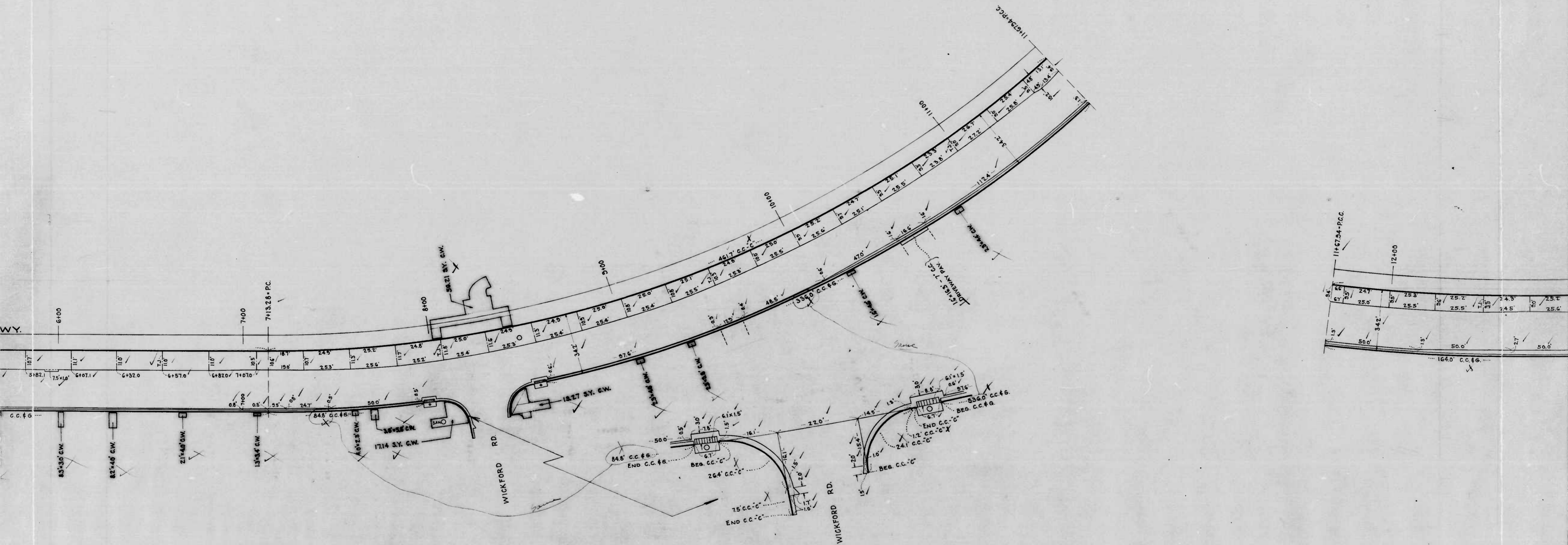
UNIVERSITY PKWY - 40TH ST - BOGARD AVE
CONT. No. 1019X



JESSE D. CARTER

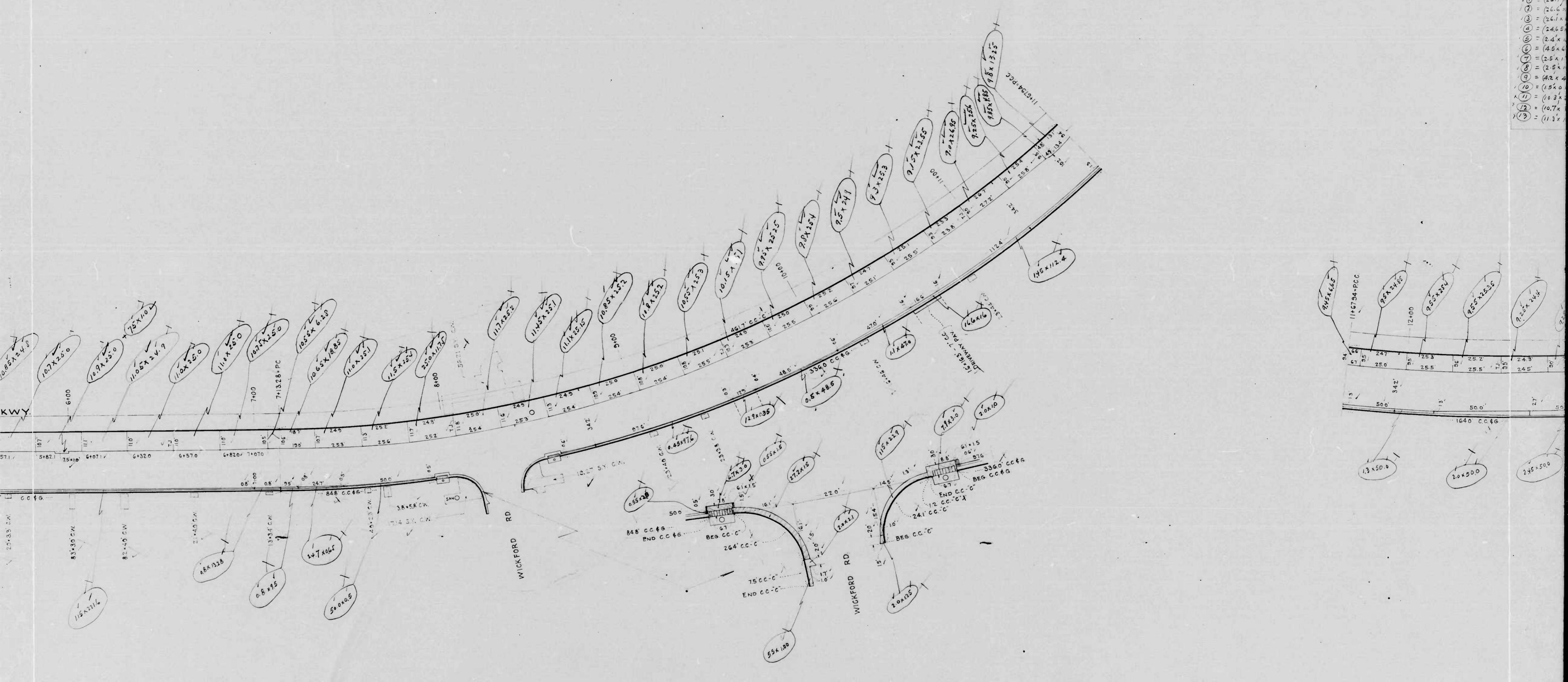


①

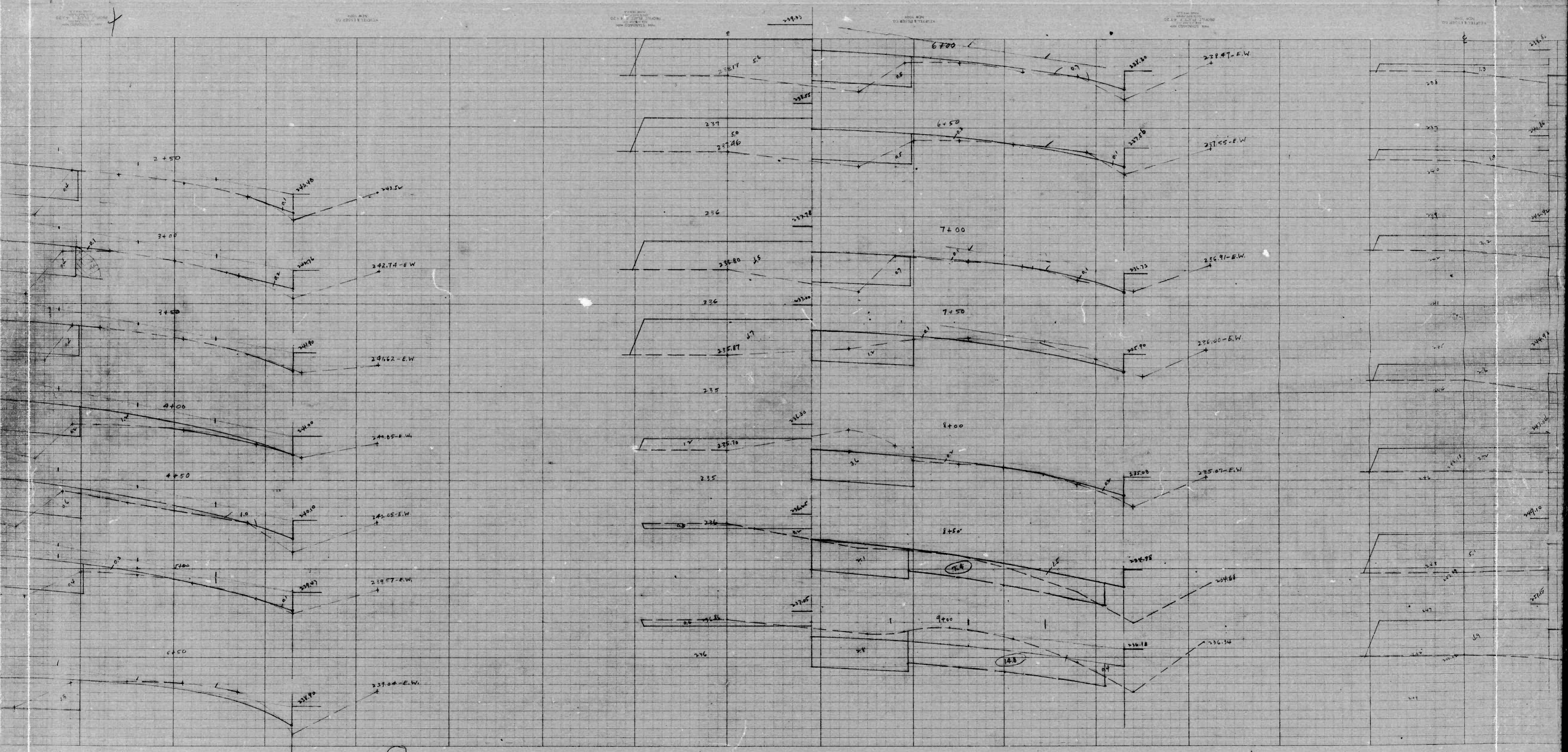


2

- ① = (26.7)
- ② = (26.6)
- ③ = (26.1)
- ④ = (24.6)
- ⑤ = (24.4)
- ⑥ = (24.4)
- ⑦ = (24.4)
- ⑧ = (24.4)
- ⑨ = (24.4)
- ⑩ = (24.4)
- ⑪ = (24.4)
- ⑫ = (24.4)
- ⑬ = (24.4)
- ⑭ = (24.4)
- ⑮ = (24.4)

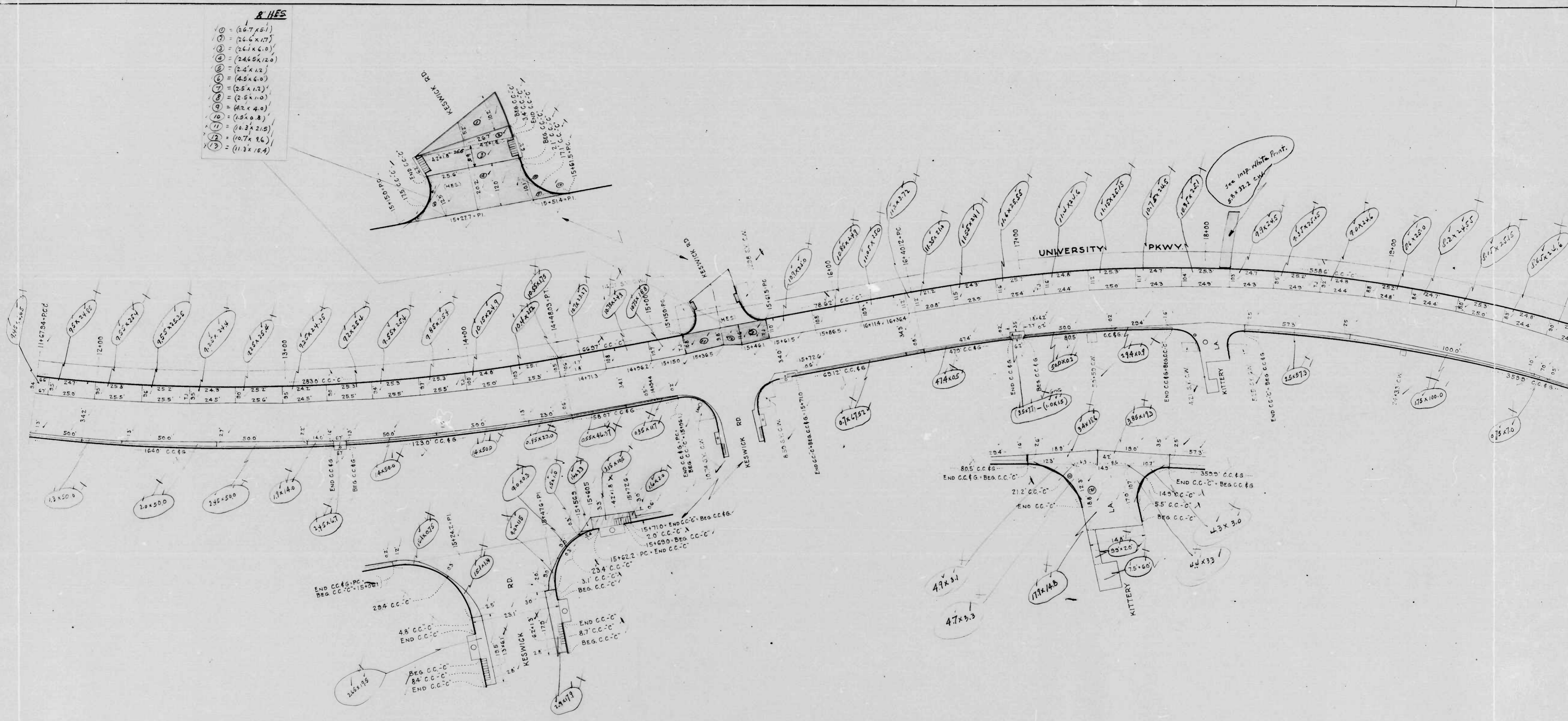


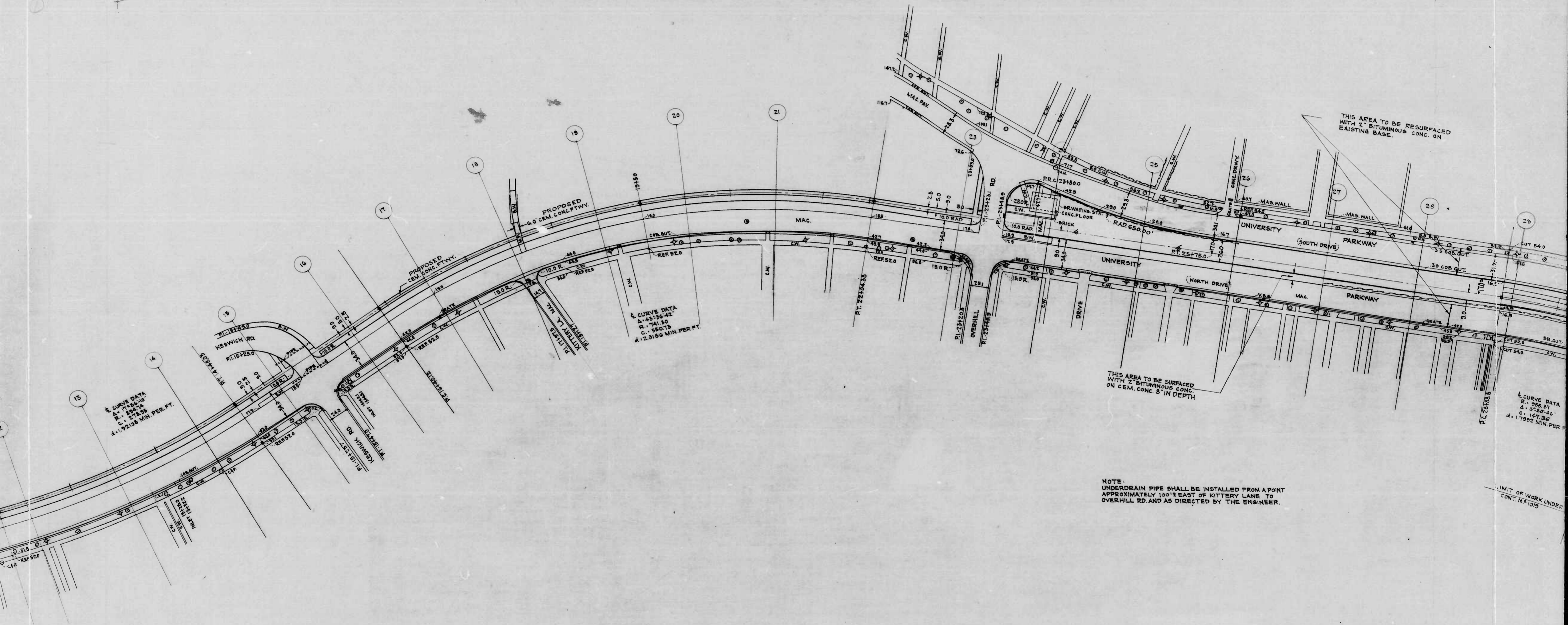
2



②

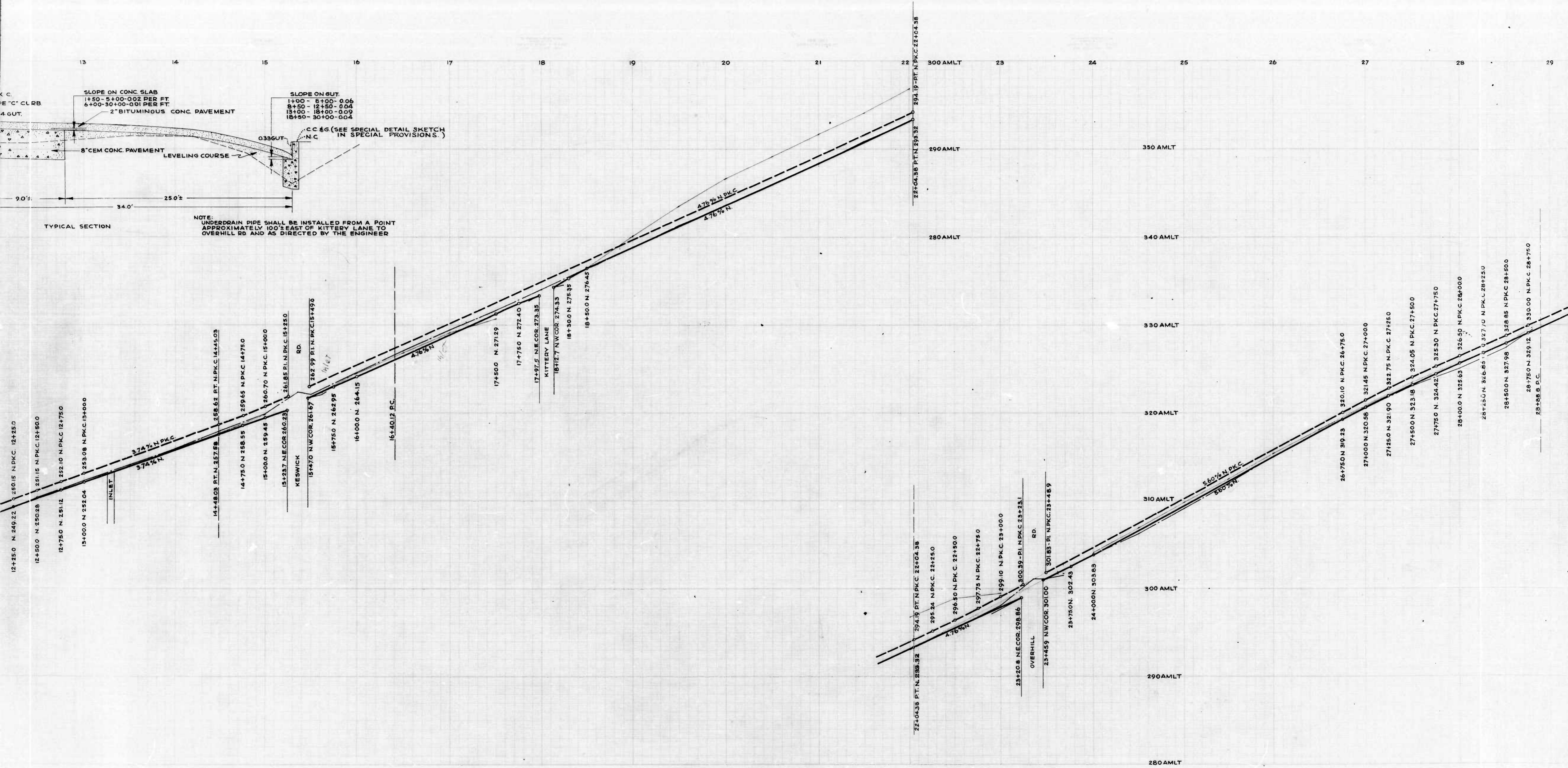
- R.H.S.**
- ① = (26.7 x 15.1)
 - ② = (26.6 x 17.7)
 - ③ = (26.1 x 6.0)
 - ④ = (24.65 x 12.0)
 - ⑤ = (2.4 x 1.2)
 - ⑥ = (4.5 x 6.0)
 - ⑦ = (2.5 x 1.2)
 - ⑧ = (2.5 x 1.0)
 - ⑨ = (4.2 x 4.0)
 - ⑩ = (1.5 x 0.8)
 - ⑪ = (10.3 x 21.8)
 - ⑫ = (10.7 x 16)
 - ⑬ = (11.3 x 15.4)

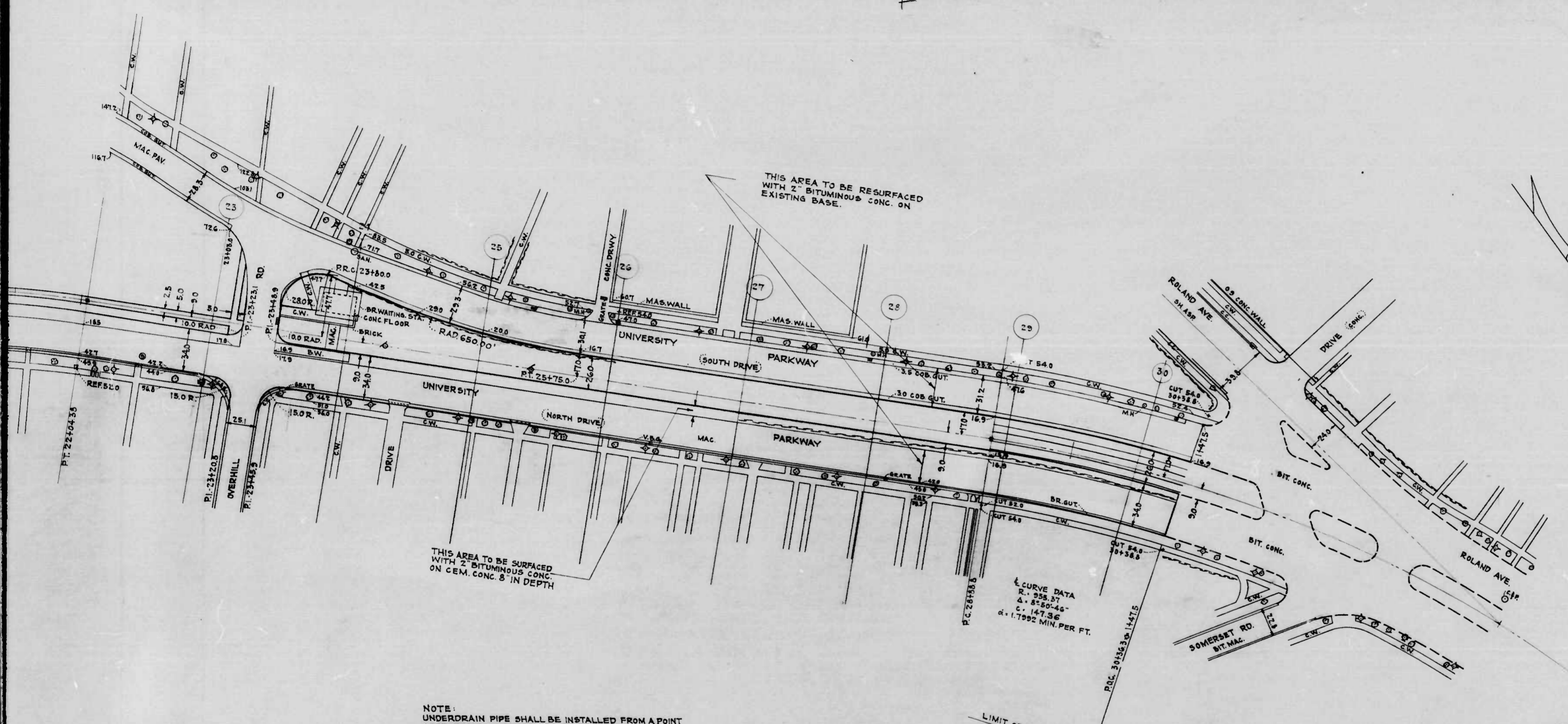




NOTE:
 UNDERDRAIN PIPE SHALL BE INSTALLED FROM A POINT
 APPROXIMATELY 100' EAST OF KITTELY LANE TO
 OVERHILL RD. AND AS DIRECTED BY THE ENGINEER.

LIMIT OF WORK UNDER
 CONT. N-1019





THIS AREA TO BE RESURFACED WITH 2" BITUMINOUS CONC. ON EXISTING BASE.

THIS AREA TO BE SURFACED WITH 2" BITUMINOUS CONC. ON CEM. CONC. 8 IN DEPTH

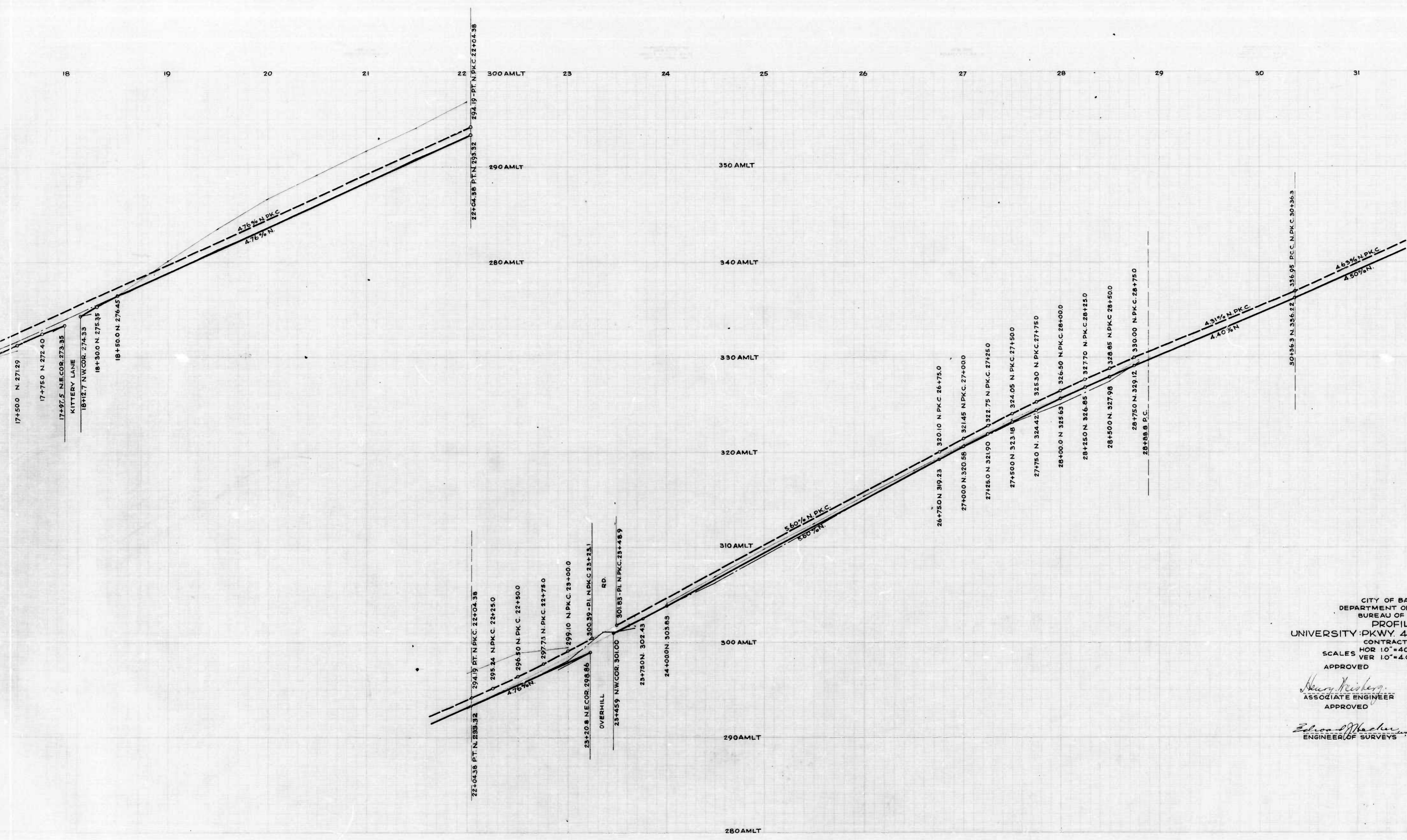
NOTE: UNDERDRAIN PIPE SHALL BE INSTALLED FROM A POINT APPROXIMATELY 100' EAST OF KITTEERY LANE TO OVERHILL RD. AND AS DIRECTED BY THE ENGINEER.

REVISED 6-28-1950

CITY OF BALTIMORE
 DEPARTMENT OF PUBLIC WORKS
 BUREAU OF HIGHWAYS
 PLAN OF
 UNIVERSITY PARKWAY - 40TH ST. TO ROLAND AVE.
 CONT. N° 1019

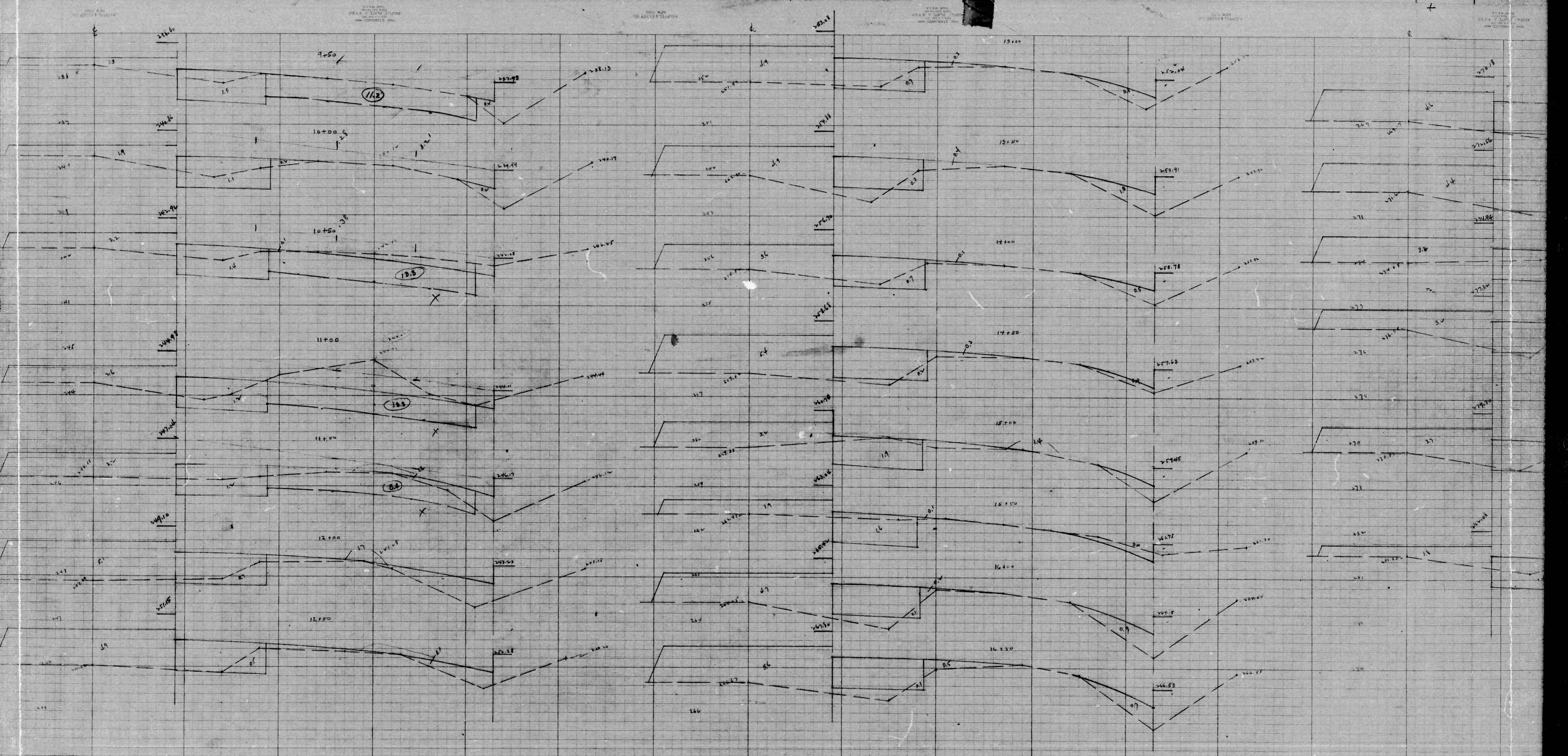
SCALE: 1" = 400'
 BOOK N° X-264
 SEPT. 20, 1949

APPROVED: *Henry M. ...* ASSOCIATE ENGINEER
 APPROVED: *John ...* HIGHWAYS ENGINEER
 APPROVED: *Edward ...* ENGINEER OF SURVEYS
 APPROVED: *P. L. ...* DIRECTOR OF PUBLIC WORKS



CITY OF BALTIMORE
 DEPARTMENT OF PUBLIC WORKS
 BUREAU OF HIGHWAYS
 PROFILE OF
 UNIVERSITY PKWY. 40th ST TO ROLAND AVE.
 CONTRACT NO. 1019
 BOOK NO. X264
 SCALES: HOR 10"=40.0' VER 10"=4.0' SEPT 21, 1949
 APPROVED: *Henry Kissler* ASSOCIATE ENGINEER
 APPROVED: *James H. McKee* HIGHWAYS ENGINEER
 APPROVED: *Edison M. Maclean* ENGINEER OF SURVEYS
 APPROVED: *P. O. Hollands* DIRECTOR OF PUBLIC WORKS

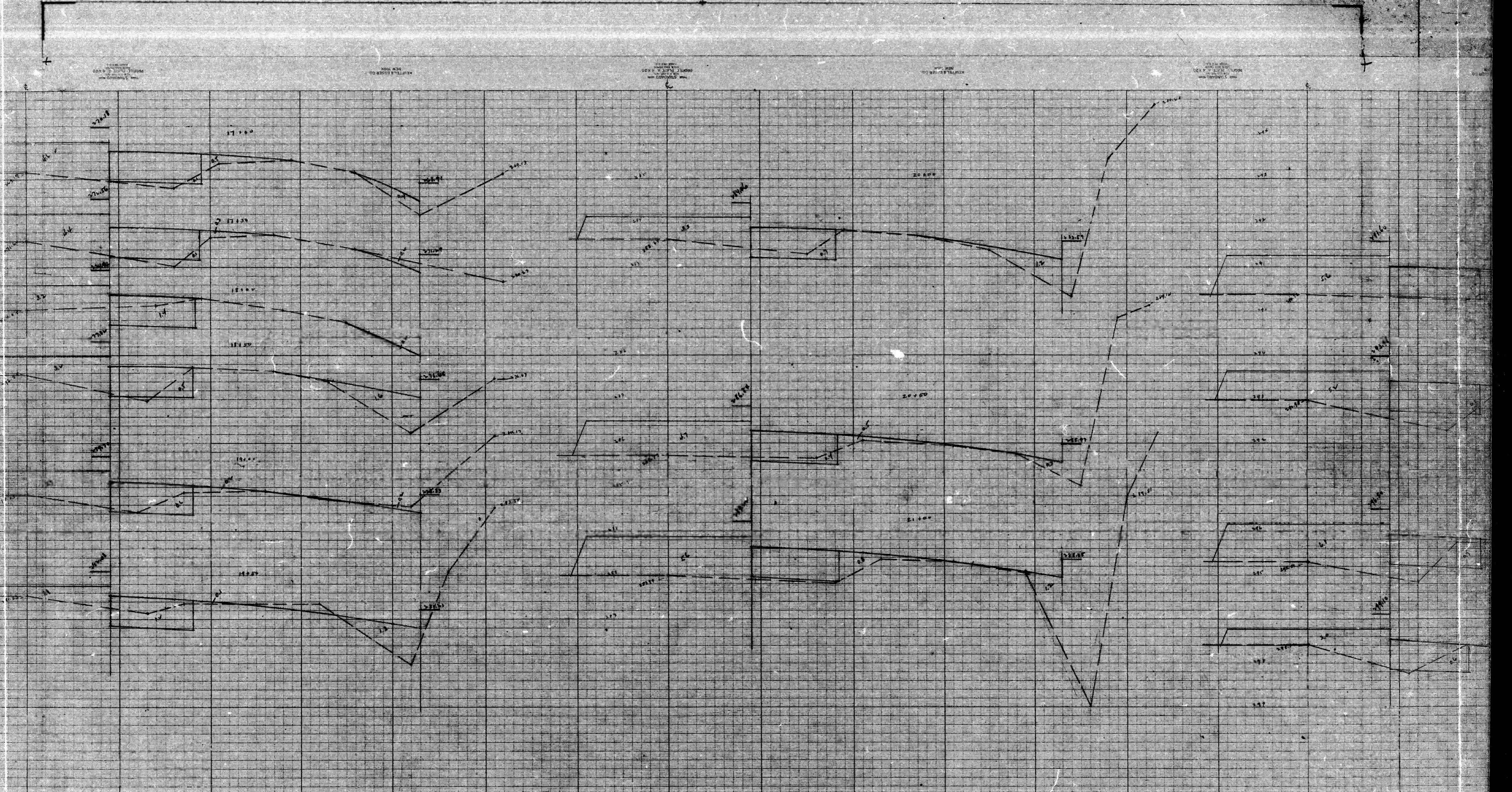
3



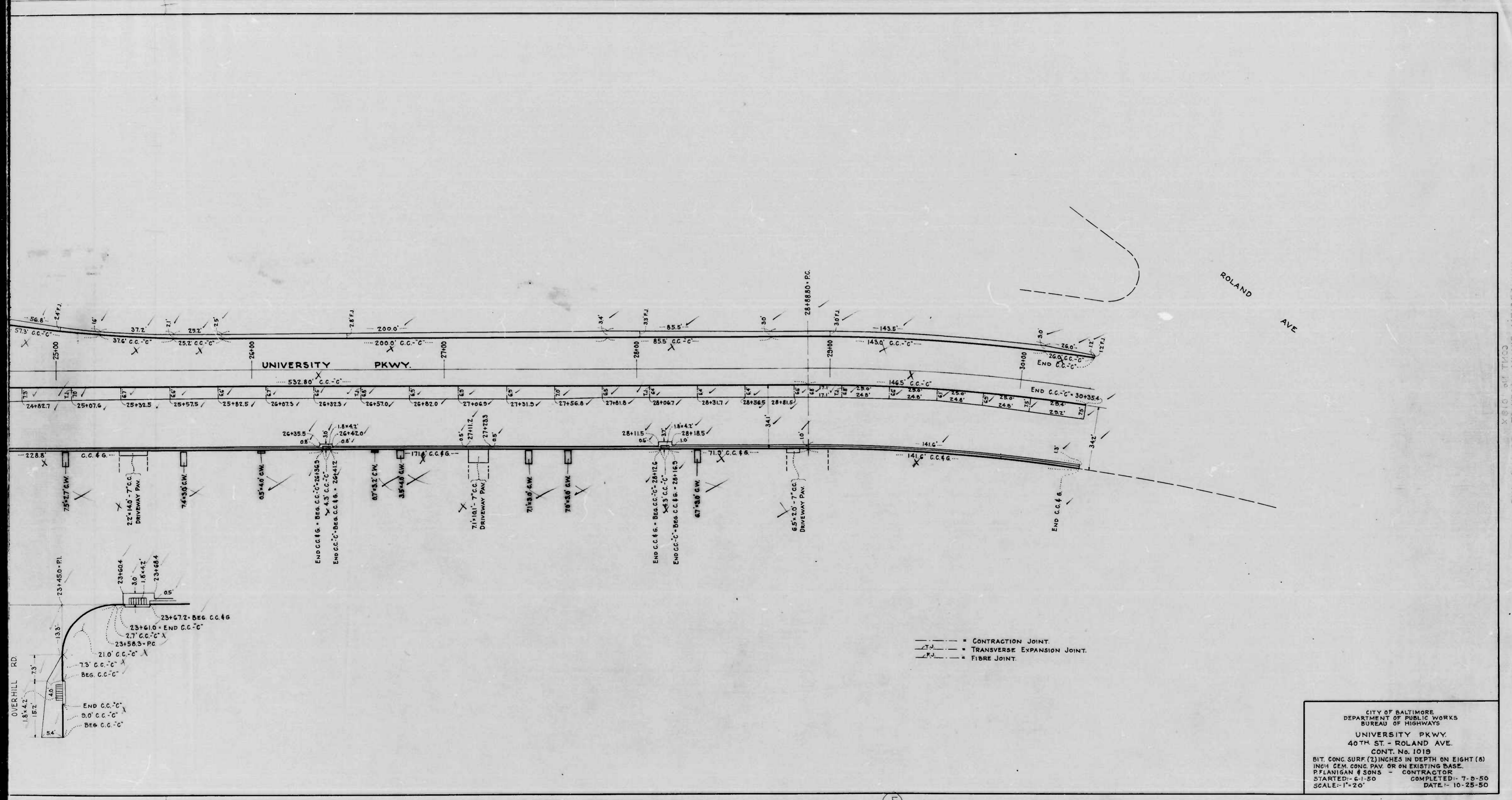
(3)

1019

RATIO - 24



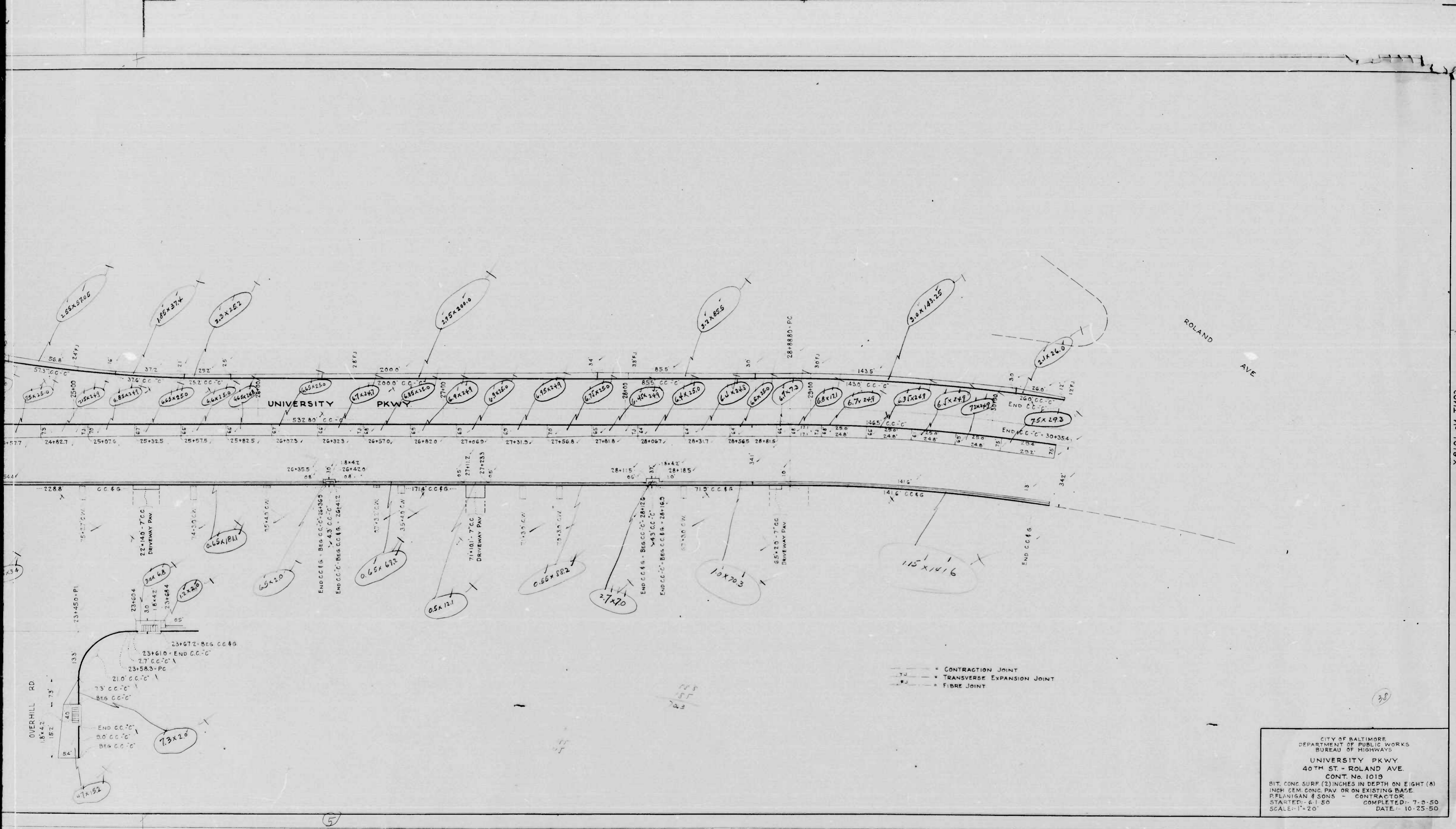
(4)



- - - - - CJ - CONSTRUCTION JOINT.
 - - - - - TEJ - TRANSVERSE EXPANSION JOINT.
 - - - - - FJ - FIBRE JOINT.

CITY OF BALTIMORE
 DEPARTMENT OF PUBLIC WORKS
 BUREAU OF HIGHWAYS
 UNIVERSITY PKWY.
 40TH ST. - ROLAND AVE.
 CONT. No. 1019
 BIT. CONC. SURF. (2) INCHES IN DEPTH ON EIGHT (8)
 INCH CEM. CONC. PAV. OR ON EXISTING BASE.
 PFLANIGAN & SONS - CONTRACTOR
 STARTED: 6-1-50 COMPLETED: 7-5-50
 SCALE: 1" = 20' DATE: 10-25-50

5



UNIVERSITY PKWY - 40TH ST - ROLAND AVE
CONT. No. 1019X

——— = CONTRACTION JOINT
 ——— = TRANSVERSE EXPANSION JOINT
 ——— = FIBRE JOINT

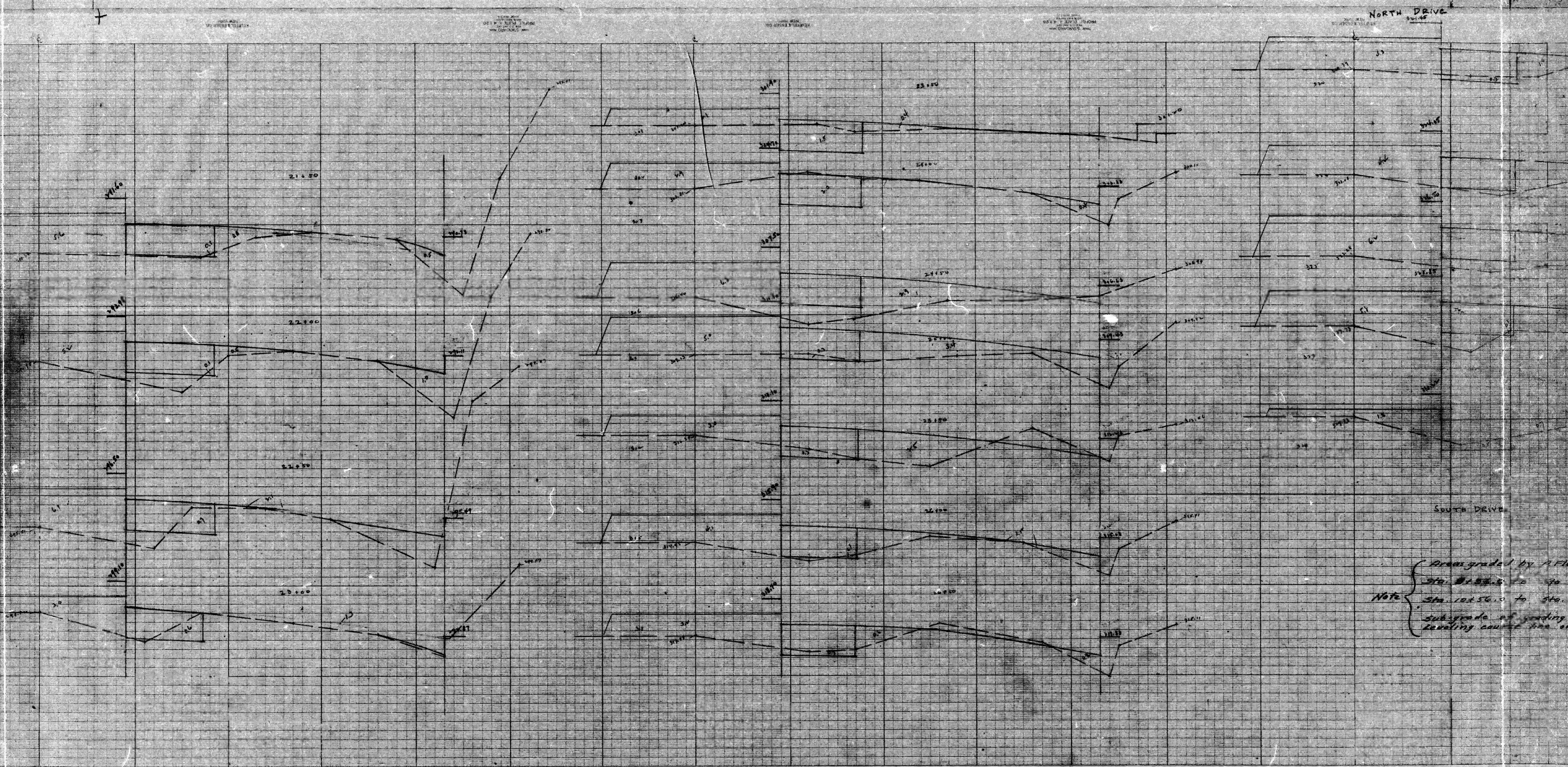
CITY OF BALTIMORE
 DEPARTMENT OF PUBLIC WORKS
 BUREAU OF HIGHWAYS
 UNIVERSITY PKWY
 40TH ST - ROLAND AVE
 CONT. No. 1019
 BIT. CONC. SURF (2) INCHES IN DEPTH ON EIGHT (8)
 INCH CEM. CONC. PAV. OR ON EXISTING BASE
 P. FLANIGAN & SONS CONTRACTOR
 STARTED - 6-1-50 COMPLETED - 7-3-50
 SCALE - 1" = 20' DATE - 10-25-50

5

38

1019

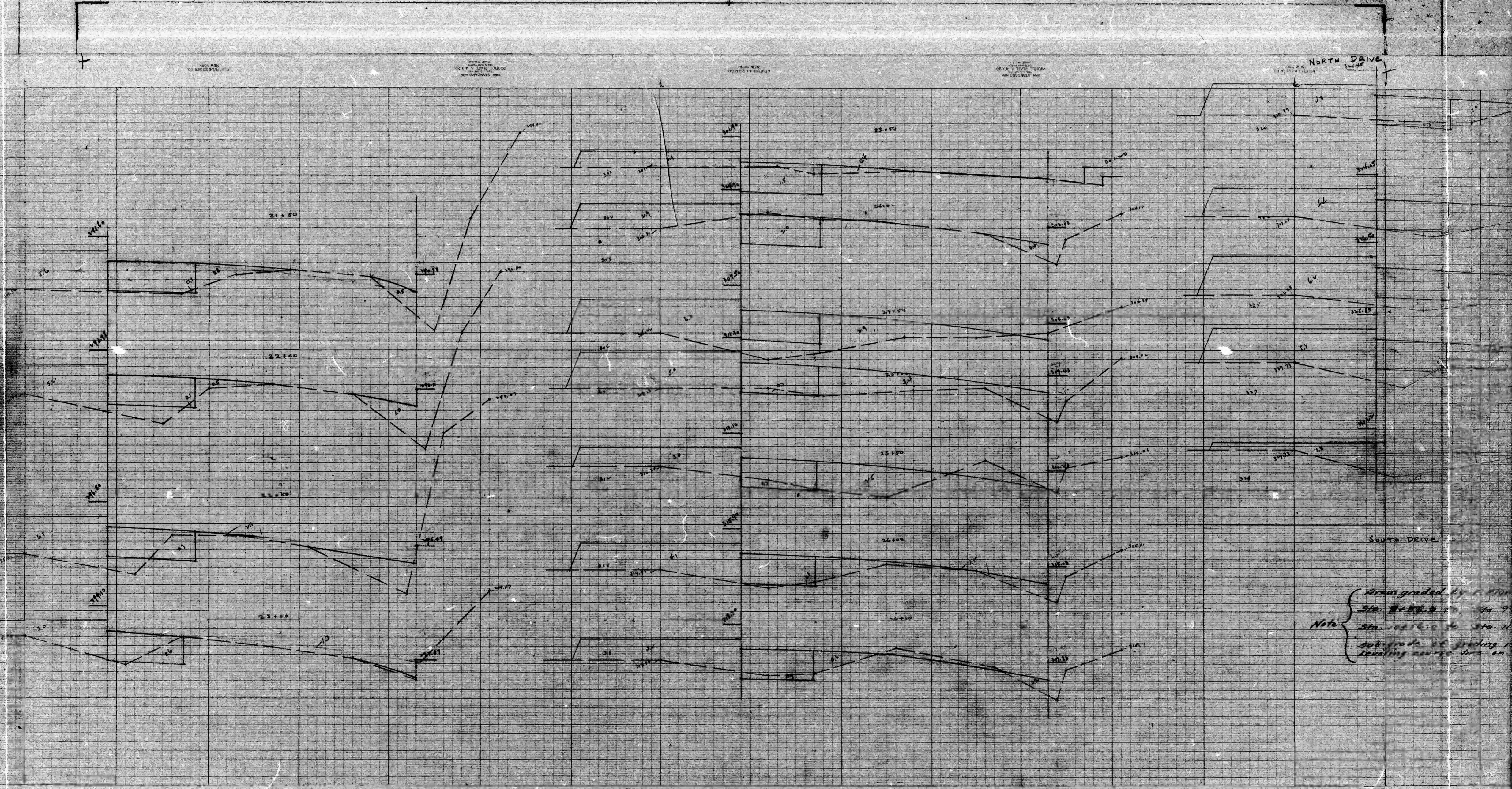
RATIO - 24



Note: Area graded by A. Flannery
Sta. 101.50 to Sta. 110.00
Subgrade and grading is
leveling course line on

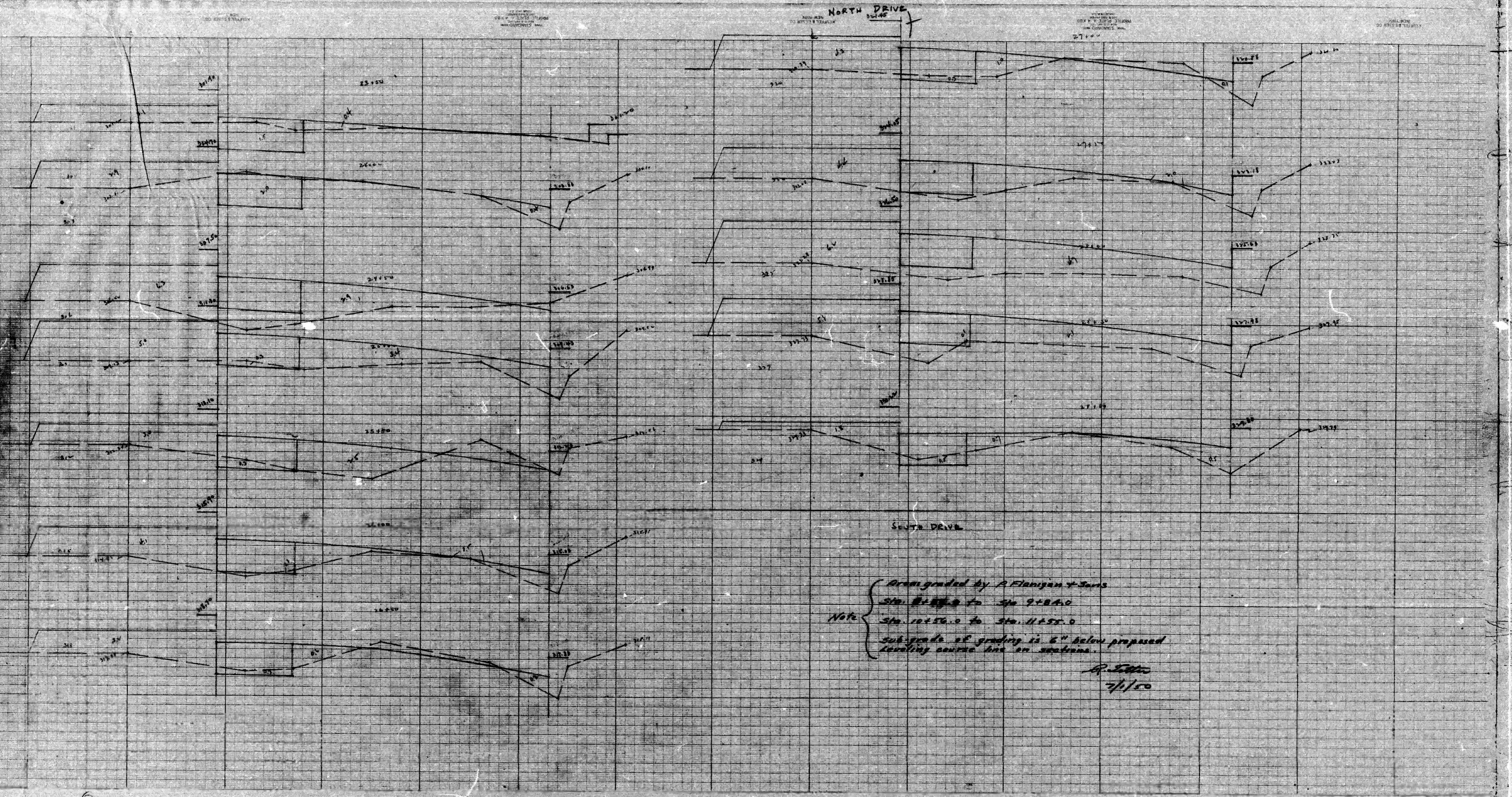
1019

RATIO - 24



Note { Areas graded by station
Sta. 22+00 to Sta. 23+00
Sta. 22+50 to Sta. 23+00
subgrade of grading &
leveling around the area

5



Designed by P. Flanagan & Sons
 Sta. 8+80.0 to Sta. 9+84.0
 Note: Sta. 10+50.0 to Sta. 11+55.0
 sub grade of grading is 6" below proposed
 landing course but on subgrade.
 R. Flanagan
 7/1/50

5

4

6