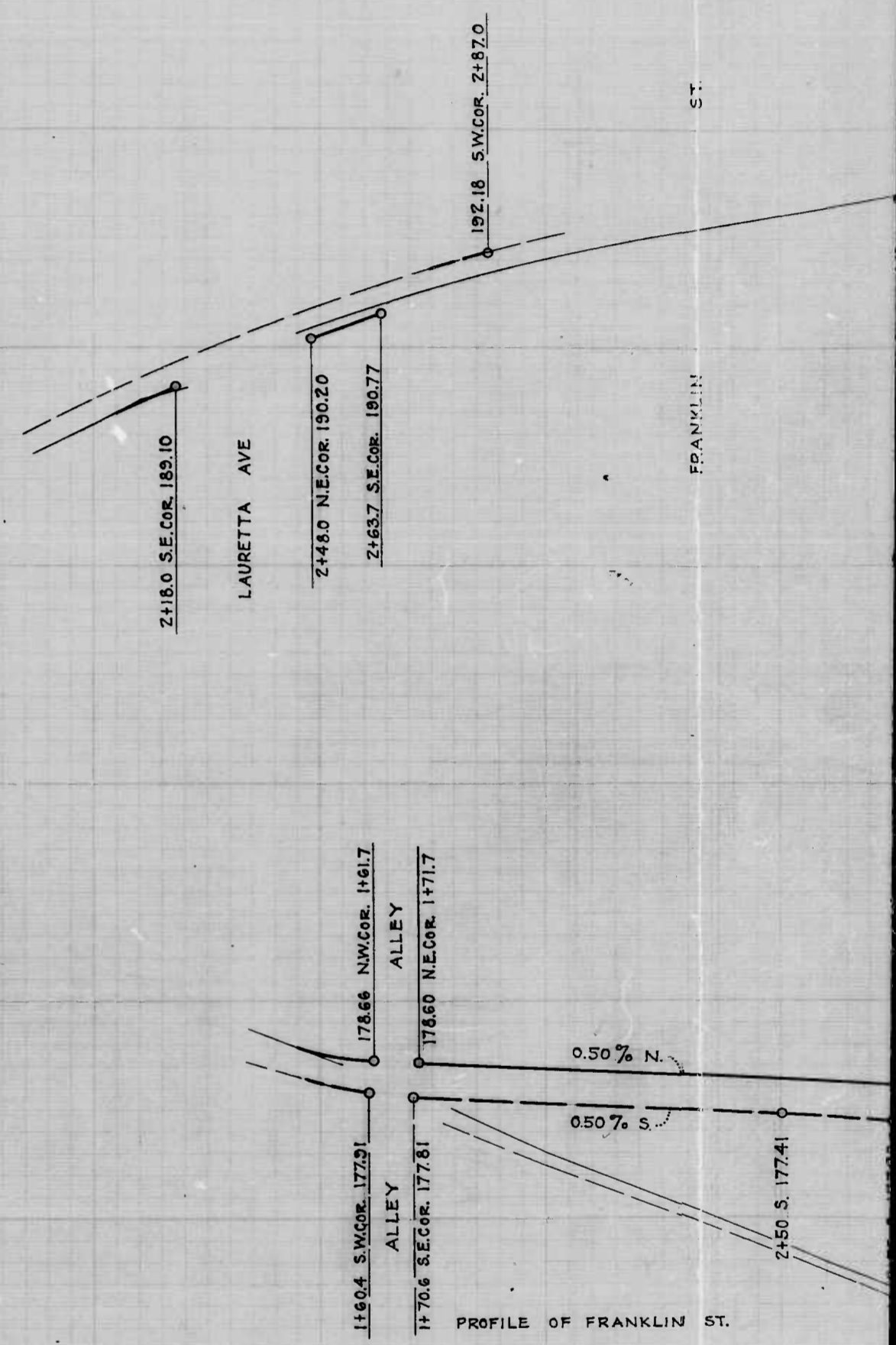
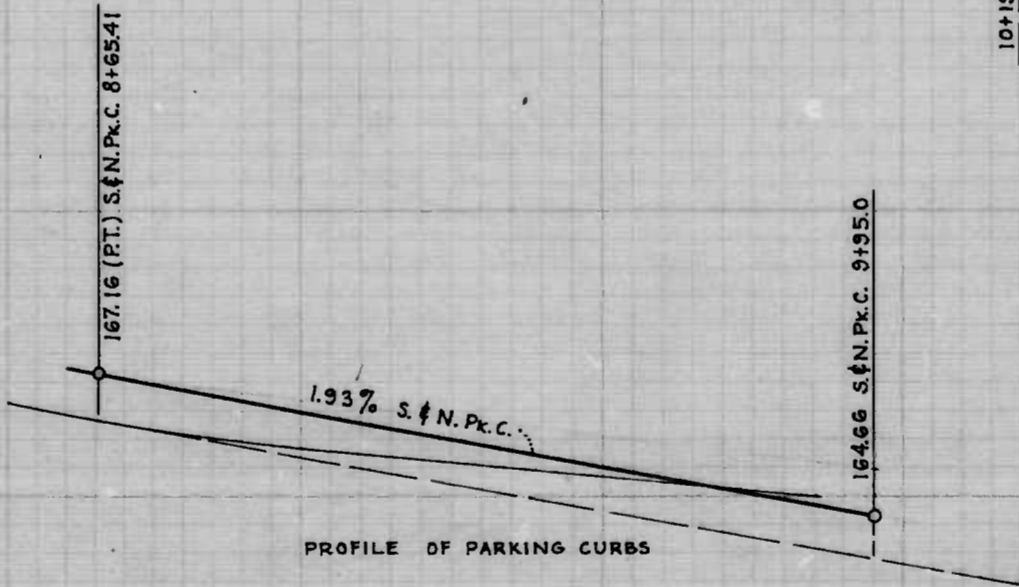
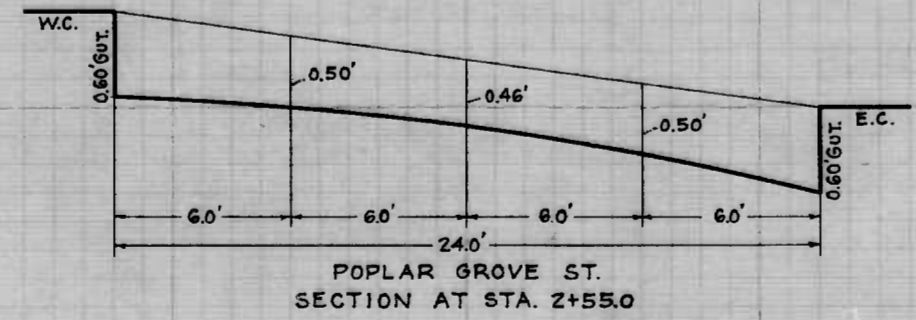
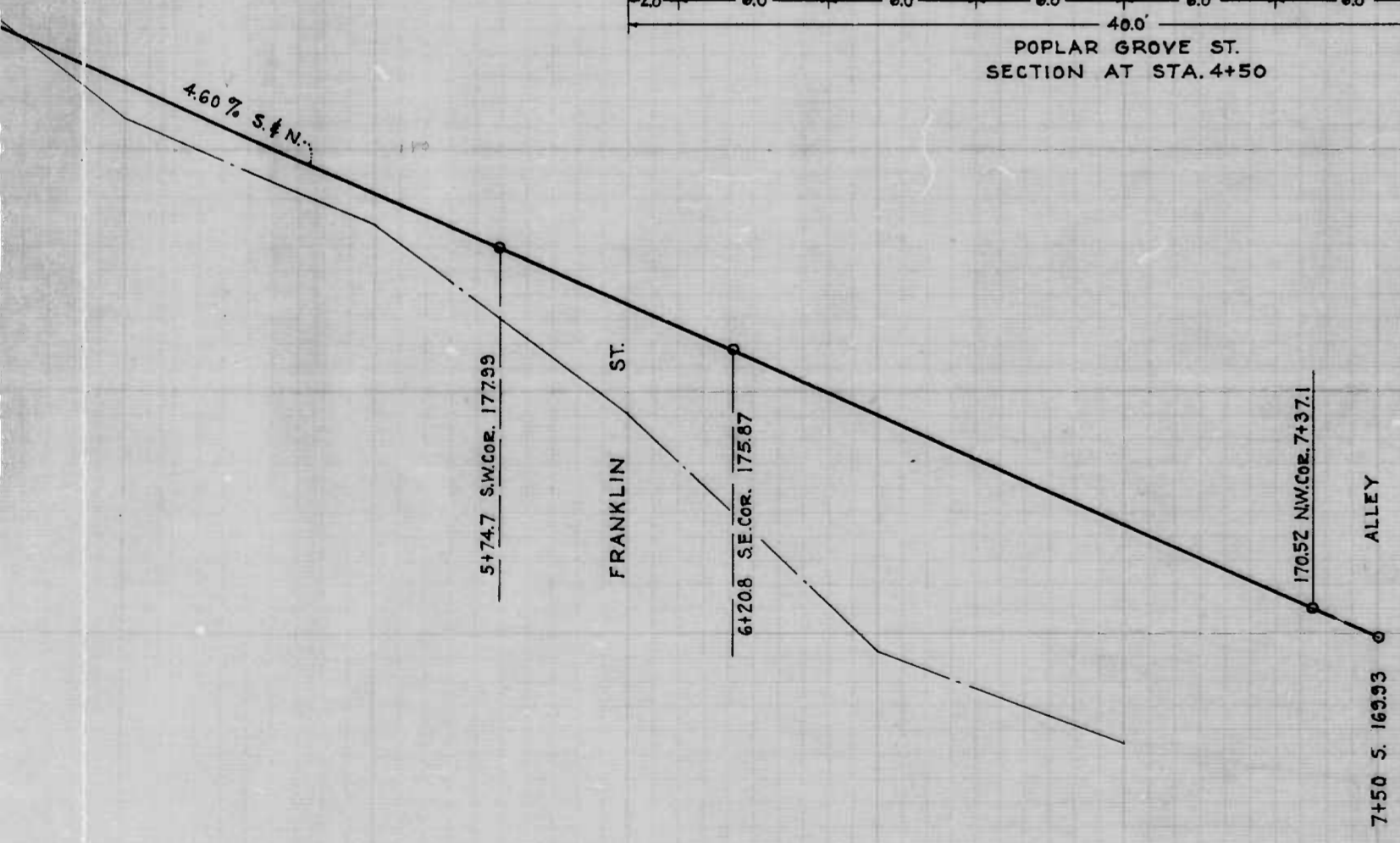
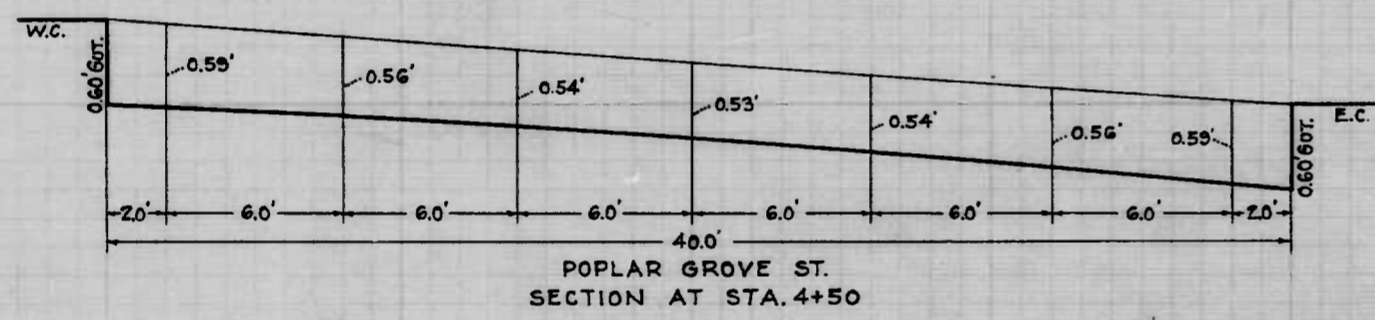
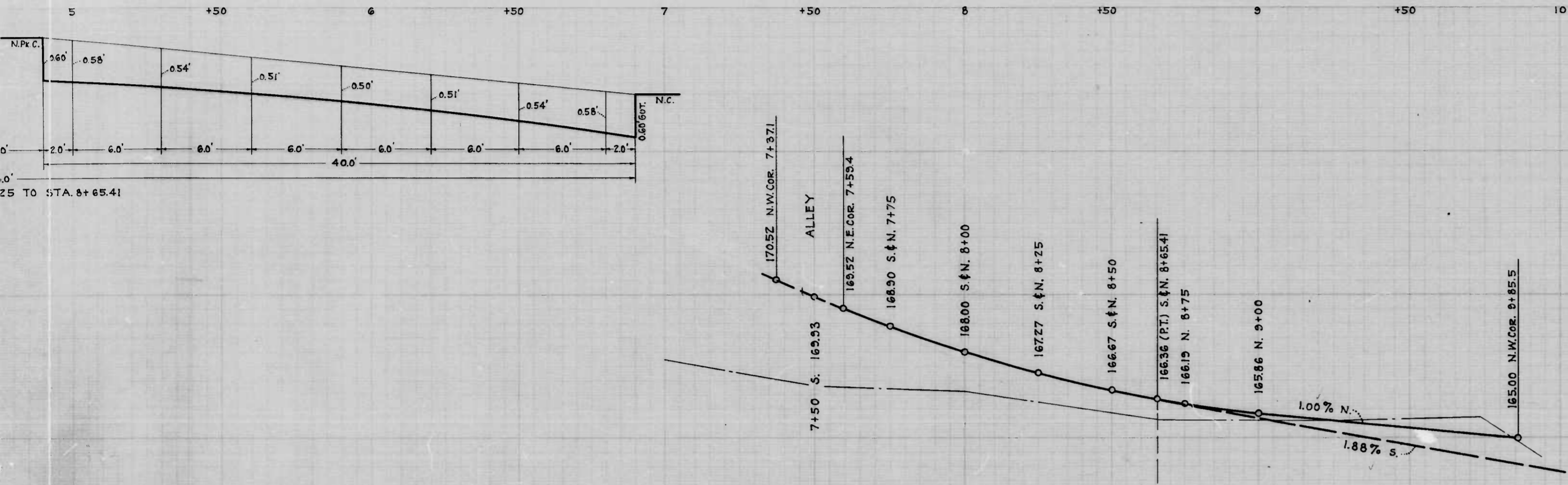
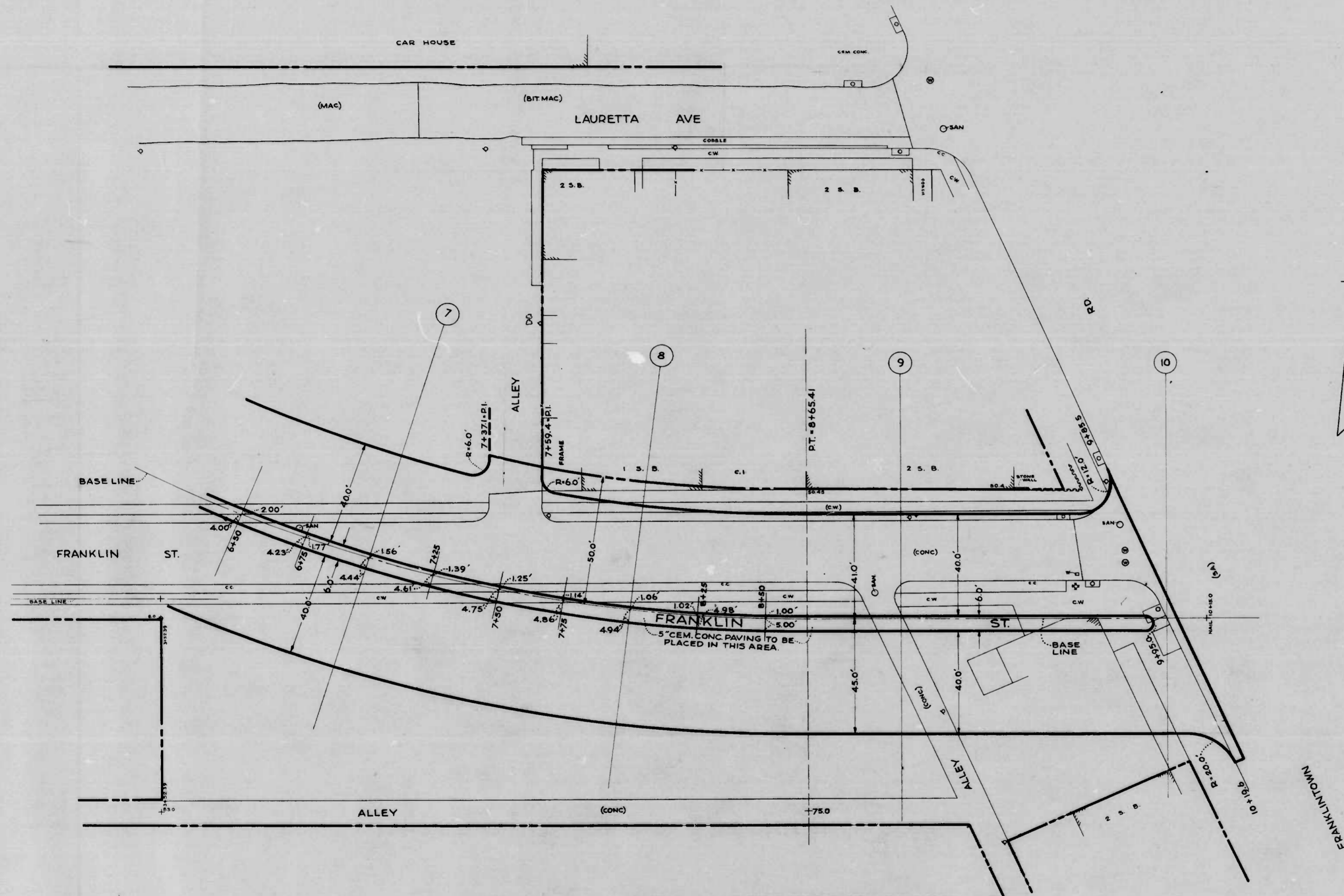


JOSE D. CAUTER
[Signature]



2



NOTE:- THE SUB-GRADE AREA ON FRANKLIN ST. AND DOPLAR GROVE ST. SHALL BE COVERED WITH A SIX (6) INCH COMPACTED LAYER OF SOIL STABILIZATION MATERIAL AND SOIL STABILIZATION MATERIAL SHALL BE PLACED AT OTHER LOCATIONS AS DIRECTED BY THE ENGINEER

UNDERDRAIN PIPE SHALL BE INSTALLED IN FRANKLIN ST. AND AS DIRECTED BY THE ENGINEER.

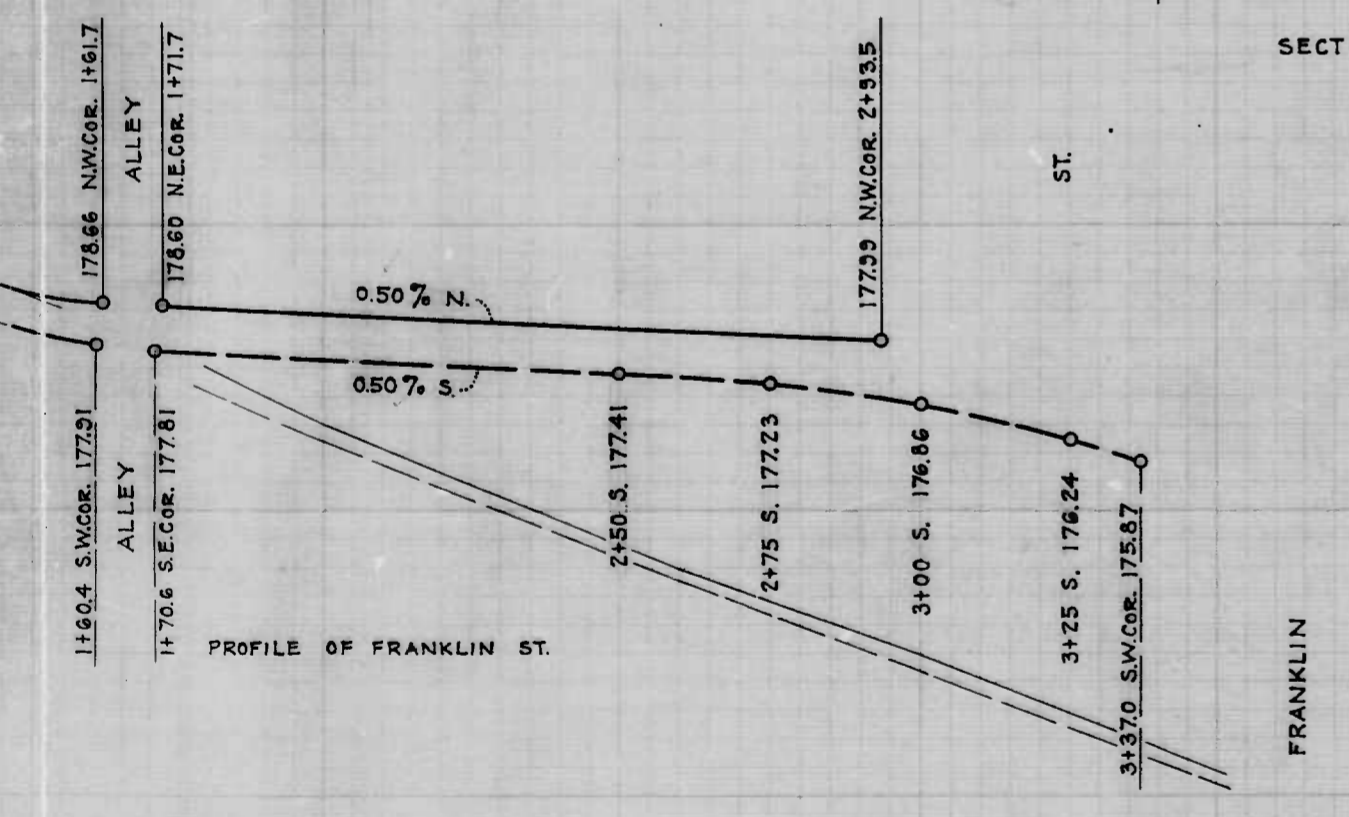
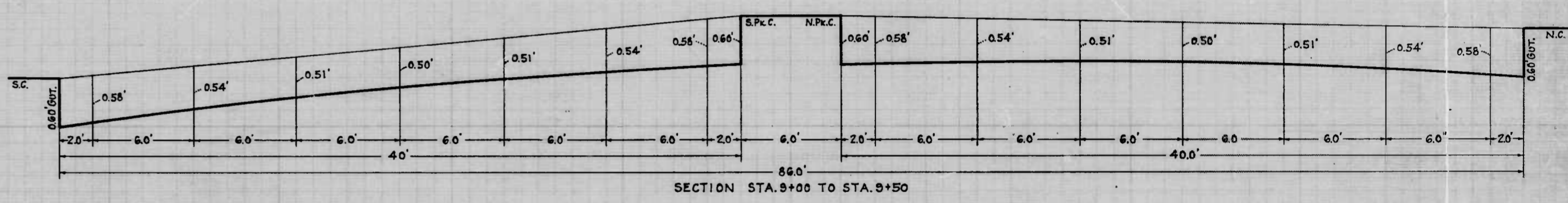
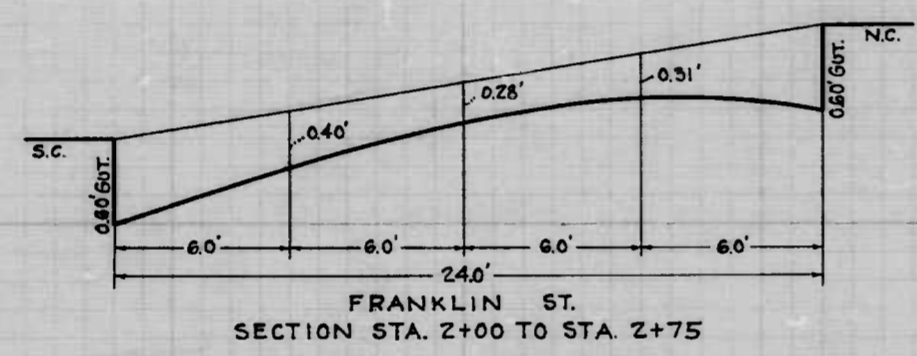
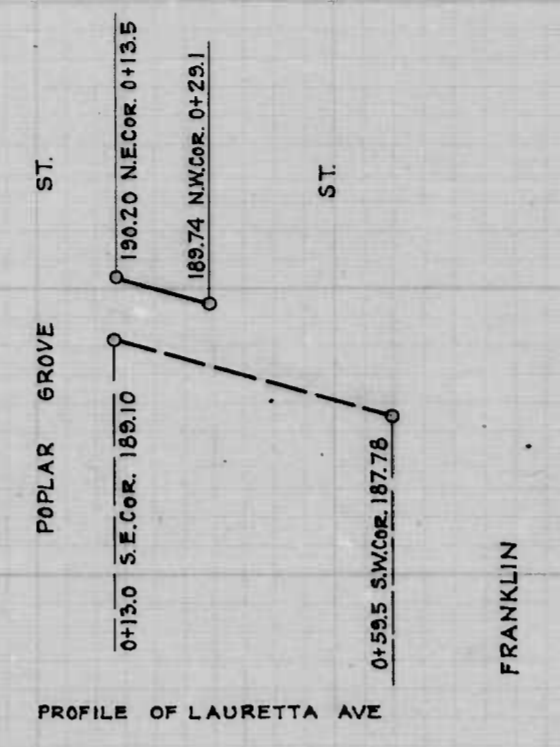
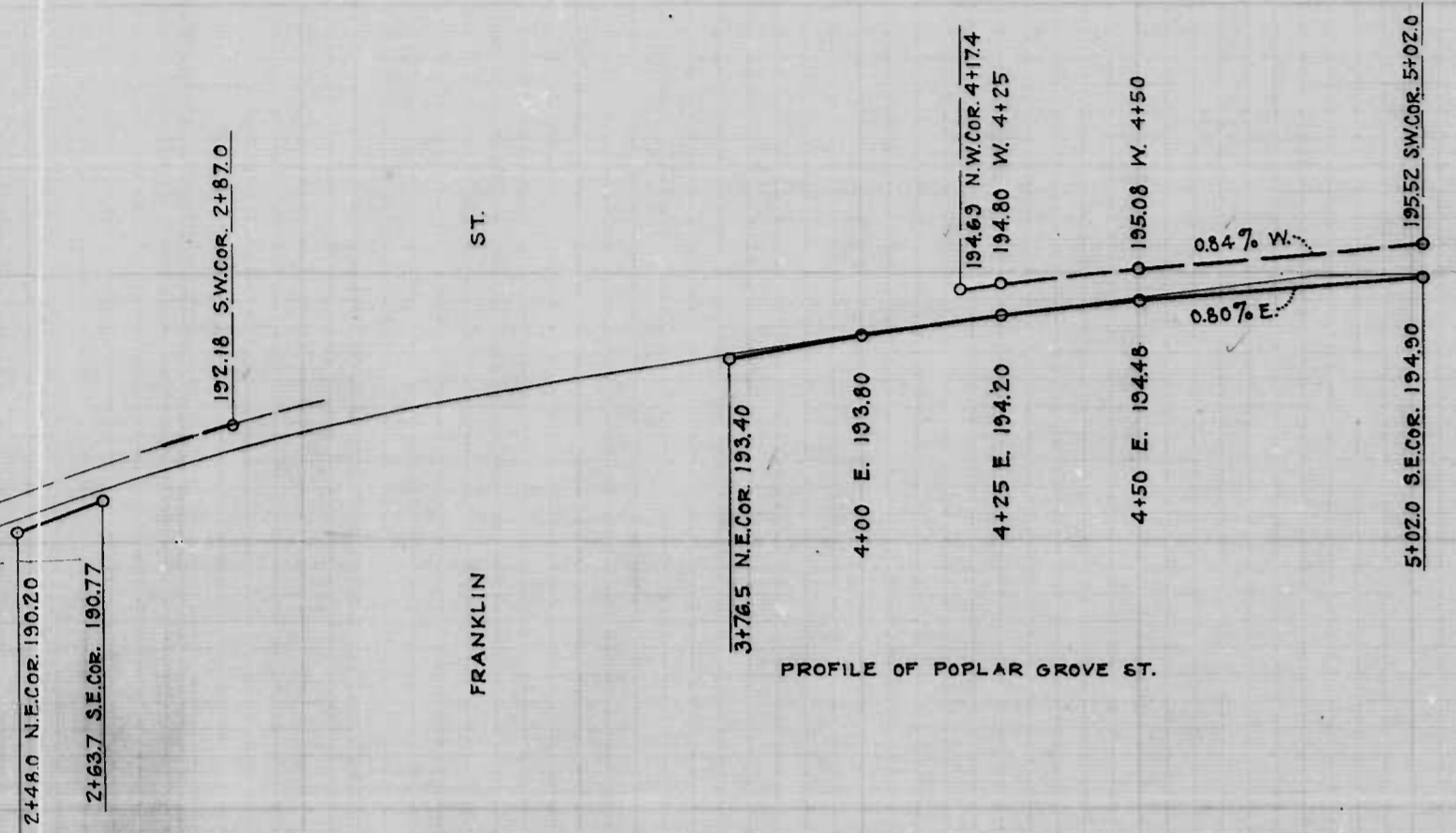
NOTE:- TO BE CEM. CONC. PAVING EIGHT (8) INCHES THICK.

CITY OF BALTIMORE
 DEPARTMENT OF PUBLIC WORKS
 BUREAU OF HIGHWAYS
 PLAN OF
 FRANKLIN ST. & CONNECTIONS
 EDMONDSON AVE - FRANKLINTOWN RD.

CONT. NO. 1018 BOOK NO. X259
 SCALE 1"=20.0' DATE OCT. 17, 1949

APPROVED *Henry Weisberg* ASSOCIATE ENGINEER
 APPROVED *James M. Key* HIGHWAYS ENGINEER

APPROVED *Edward M. Hester* ENGINEER OF SURVEYS
 APPROVED *P. H. Hester* DIRECTOR OF PUBLIC WORKS



CITY OF BALTIMORE
DEPARTMENT OF PUBLIC WORKS
BUREAU OF HIGHWAYS

PROFILE OF
FRANKLIN ST AND CONNECTIONS
EDMONDSON AVE - FRANKLINTOWN RD.
CONT. No. 1018

SCALES: HOR: 1" = 20'
VER: 1" = 2'

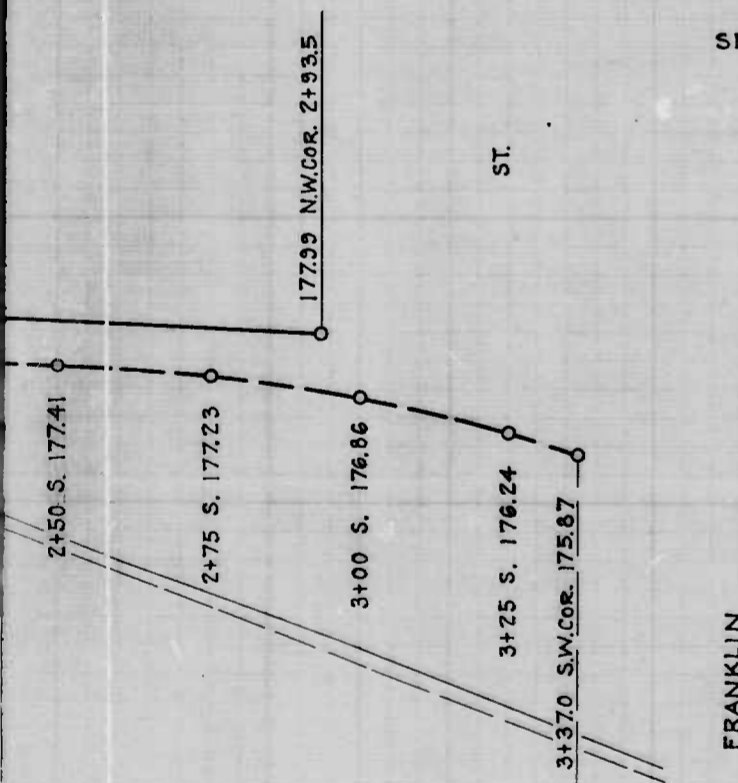
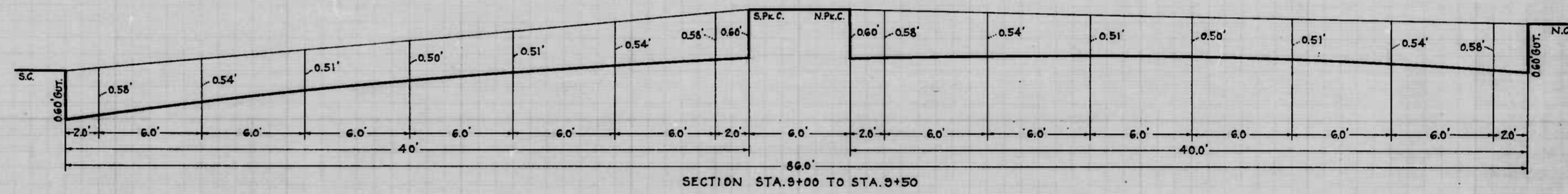
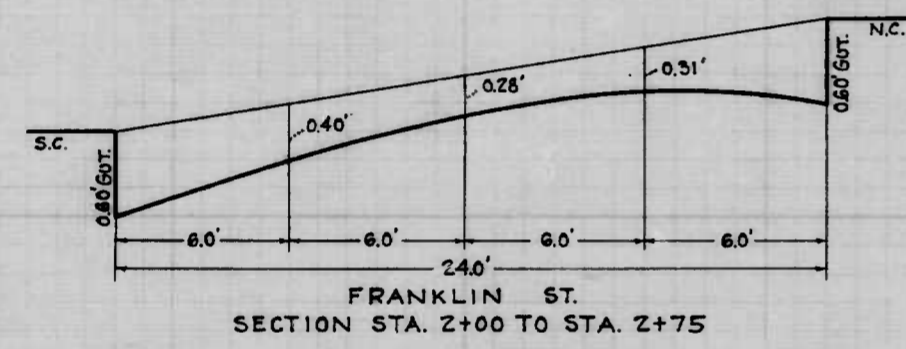
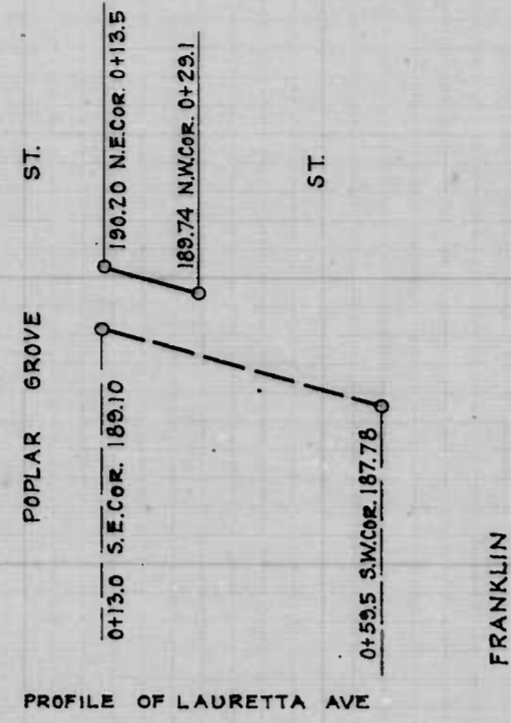
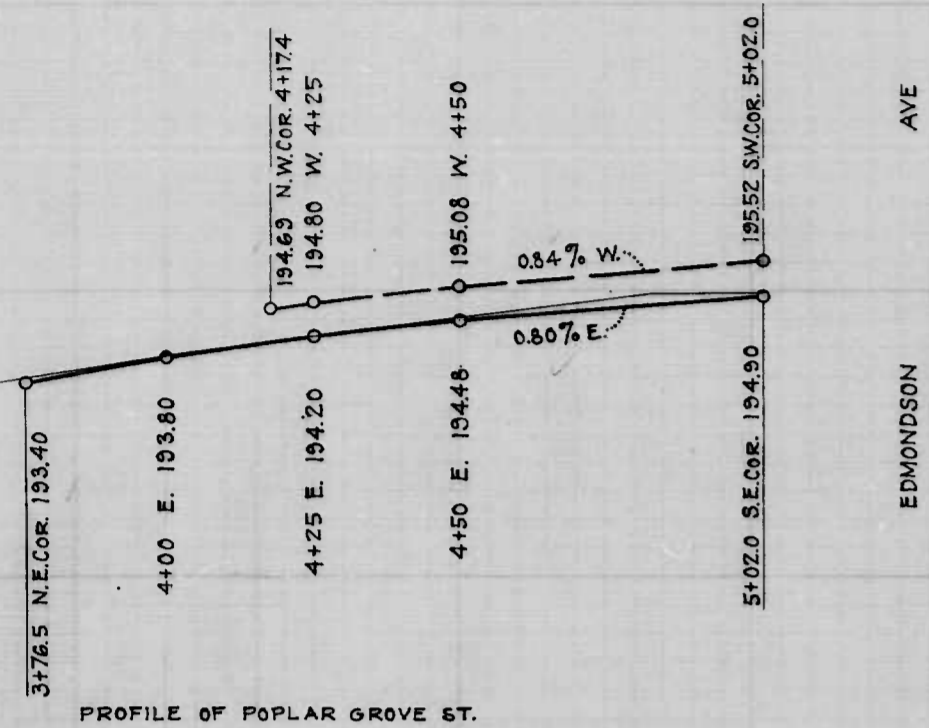
APPROVED
Henry Weisberg
ASSOCIATE ENGINEER

APPROVED
A. M. Fagan
HIGHWAYS ENGINEER

Edward Macken
ENGINEER OF SURVEYS

P. L. Hollander
DIRECTOR OF PUBLIC WORKS

BOOK: X-259
DATE: OCT. 18, 1949



CITY OF BALTIMORE
 DEPARTMENT OF PUBLIC WORKS
 BUREAU OF HIGHWAYS

PROFILE OF
 FRANKLIN ST AND CONNECTIONS
 EDMONDSON AVE - FRANKLINTOWN RD.

CONT. No. 1018

SCALES - HOR: 1" = 20'
 VER: 1" = 2'

BOOK: X-255
 DATE: OCT. 18, 1949

APPROVED
Henry Meisberg
 ASSOCIATE ENGINEER

APPROVED
R. L. Hollander
 HIGHWAYS ENGINEER

Edward H. Mackay
 ENGINEER OF SURVEYS

R. L. Hollander
 DIRECTOR OF PUBLIC WORKS

4