

THE GRADIENT OF THIS PROFILE  
 IS SUBJECT TO THE CITY TO THE  
 ACCEPTANCE AND OR IMPROVE-  
 MENT OF ANY THOROUGHFARE  
 SHOWN HEREON.

CITY OF BALTIMORE  
 DEPARTMENT OF PUBLIC WORKS  
 BUREAU OF HIGHWAYS  
 PROFILE OF  
 KINGSLEY ST. - PARKESLEY AVE - ALLEY 102'± EAST  
 CONT NO 1005

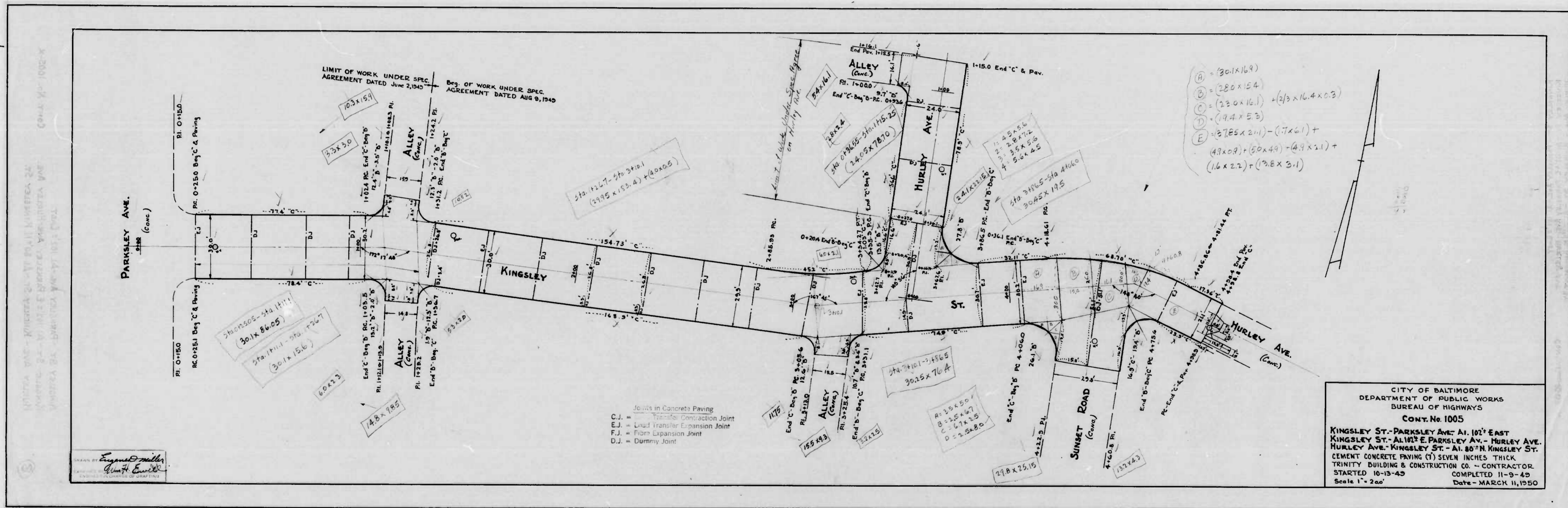
SCALE: - 5 Hor. 1" = 20'  
 - 2 Ver. 1" = 20'

BOOK NO X-255  
 DATE: SEP 2, 1949

APPROVED  
*Henry Weisberg*  
 ASSOCIATE ENGR.  
 APPROVED  
*Edward Maecher*  
 ENGR. OF SURVEYS

APPROVED  
*James A. McLean*  
 HIGHWAYS ENGR.  
 APPROVED  
*P. L. Hollands*  
 DIRECTOR OF PUBLIC WORKS

DRAWN BY  
*James A. McLean*  
 CHECKED BY  
*Wm. A. Russell*  
 ENCL. 1005-1005-1005



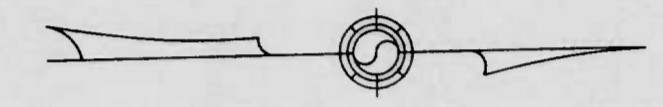
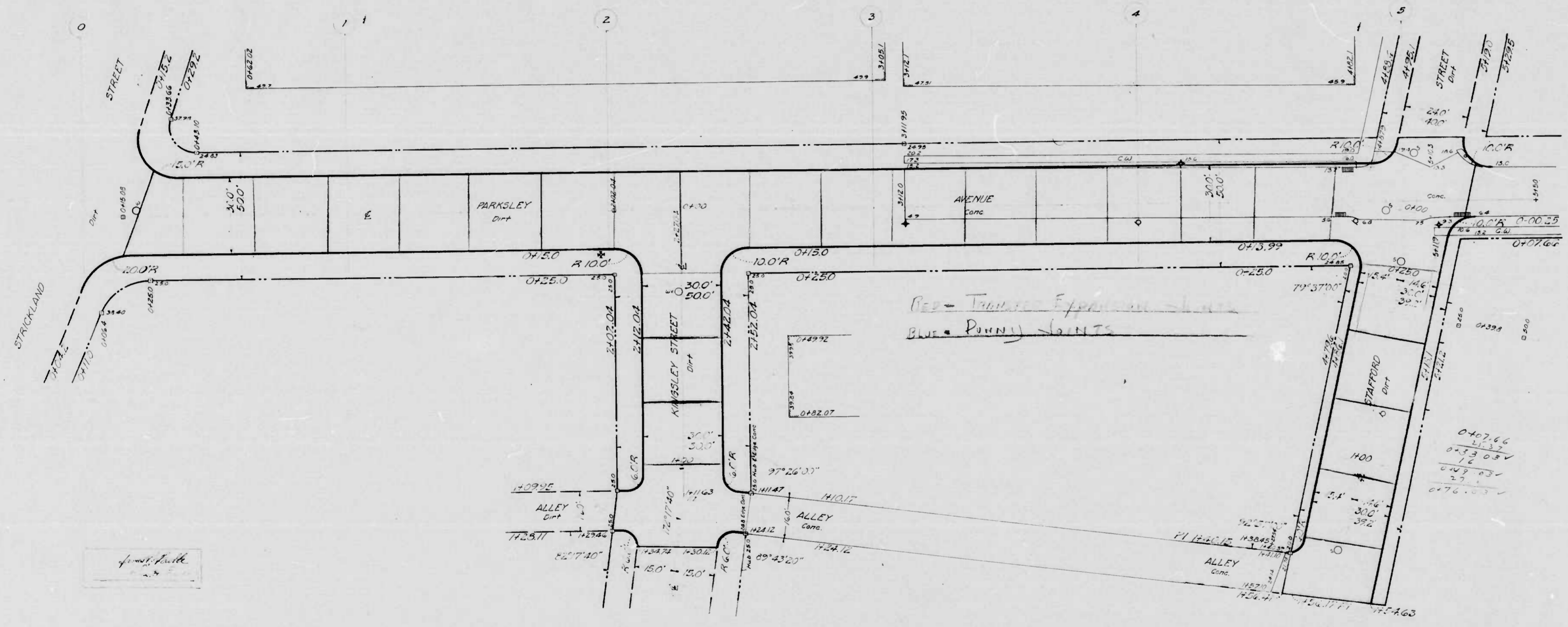
CITY OF BALTIMORE  
 DEPARTMENT OF PUBLIC WORKS  
 BUREAU OF HIGHWAYS  
 CONT. No. 1005  
 KINGSLEY ST. - PARKSLEY AVE. AT 181° EAST  
 KINGSLEY ST. - ALLEY E. PARKSLEY AVE. - HURLEY AVE.  
 HURLEY AVE. - KINGSLEY ST. - AL. 80° N. KINGSLEY ST.  
 CEMENT CONCRETE PAVING (7) SEVEN INCHES THICK  
 TRINITY BUILDING & CONSTRUCTION CO. - CONTRACTOR  
 STARTED 10-15-49 COMPLETED 11-9-49  
 Scale 1" = 20' Date - MARCH 11, 1950

Prepared by  
 Eugene Miller  
 West Co. Inc.  
 ENGINEERS ARCHITECTS AND DRAFTSMEN

1005

RATIO 10

RE-PHOTOGRAPH

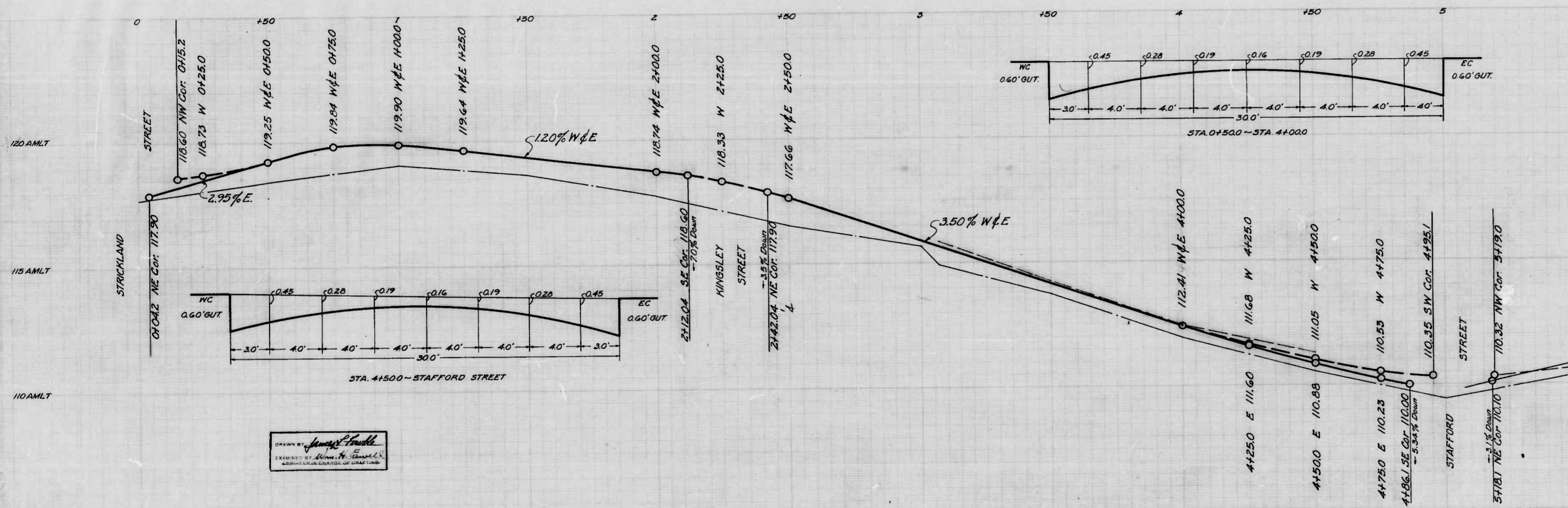


TO BE CEMENT CONCRETE PAVING  
SEVEN (7) INCHES THICK.

CITY OF BALTIMORE  
DEPARTMENT OF PUBLIC WORKS  
BUREAU OF HIGHWAYS  
PLAN OF  
PARKSLEY AVE. - STRICKLAND ST. - STAFFORD ST.  
STAFFORD ST. - PARKSLEY AVE. - ALLEY 134 1/2 EAST  
KINGSLEY ST. - PARKSLEY AVE. - ALLEY 102 1/2 EAST  
CONT # 1005

SCALE 1" = 20'  
APPROVED \_\_\_\_\_ DATE: AUG 26, 1949  
ASSOCIATE ENGR. APPROVED \_\_\_\_\_ HIGHWAYS ENGR. APPROVED \_\_\_\_\_  
EDWARD HOLLANDS \_\_\_\_\_ P. L. HOLLANDS  
ENGR. OF SURVEYS DIRECTOR OF PUBLIC WORKS

KINGSLEY ST. - PARKSLEY AVE. - ALLEY 102 1/2 EAST  
 STAFFORD ST. - PARKSLEY AVE. - ALLEY 134 1/2 EAST  
 PLAN OF  
 PARKSLEY AVE. - STRICKLAND ST. - STAFFORD ST.  
 STAFFORD ST. - PARKSLEY AVE. - ALLEY 134 1/2 EAST  
 KINGSLEY ST. - PARKSLEY AVE. - ALLEY 102 1/2 EAST  
 CONT # 1005



THE ISSUANCE OF THIS PROFILE DOES NOT COMMIT THE CITY TO THE ACCEPTANCE AND OR IMPROVEMENT OF ANY THOROUGHFARE SHOWN HEREON.

CITY OF BALTIMORE  
DEPARTMENT OF PUBLIC WORKS  
BUREAU OF HIGHWAYS  
PROFILE OF  
PARKSLEY AVE. - STRICKLAND ST. - STAFFORD ST.  
CONT. N° 1005

SCALE  
HOR. 1"=20'  
VER. 1"=2.0'

APPROVED  
*Henry Weisberg*  
ASSOCIATE ENGR.

APPROVED  
*Edward Madeline*  
ENGR. OF SURVEYS

BOOK N° X-255  
DATE - SEP 1, 1949

APPROVED  
*James H. Gray*  
HIGHWAYS ENGR.

APPROVED  
*P. D. Holland*  
DIRECTOR OF PUBLIC WORKS

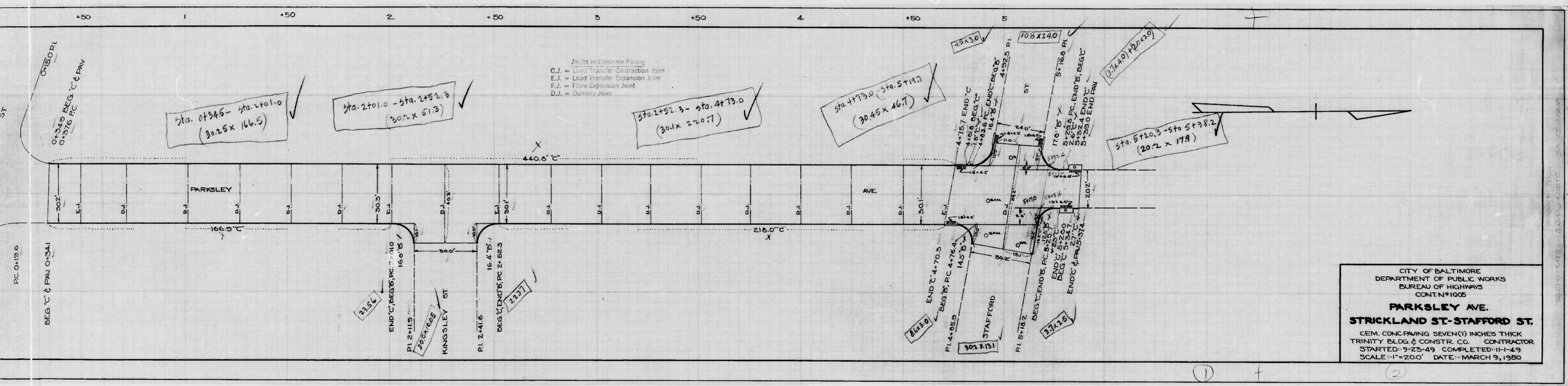
DRAWN BY *James P. Smith*  
EXAMINED BY *Edmund N. ...*  
REGISTERED CIVIL ENGINEER

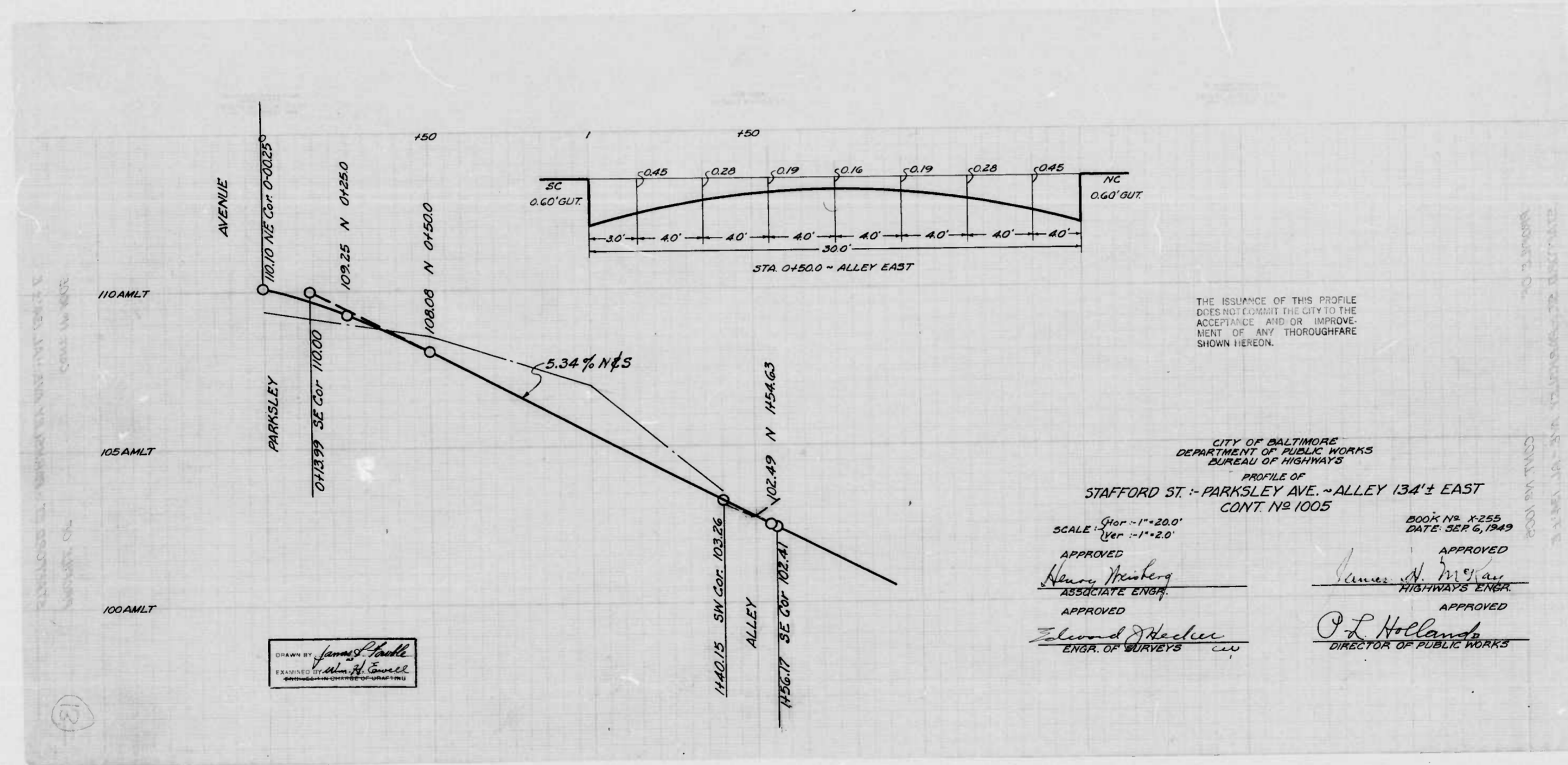


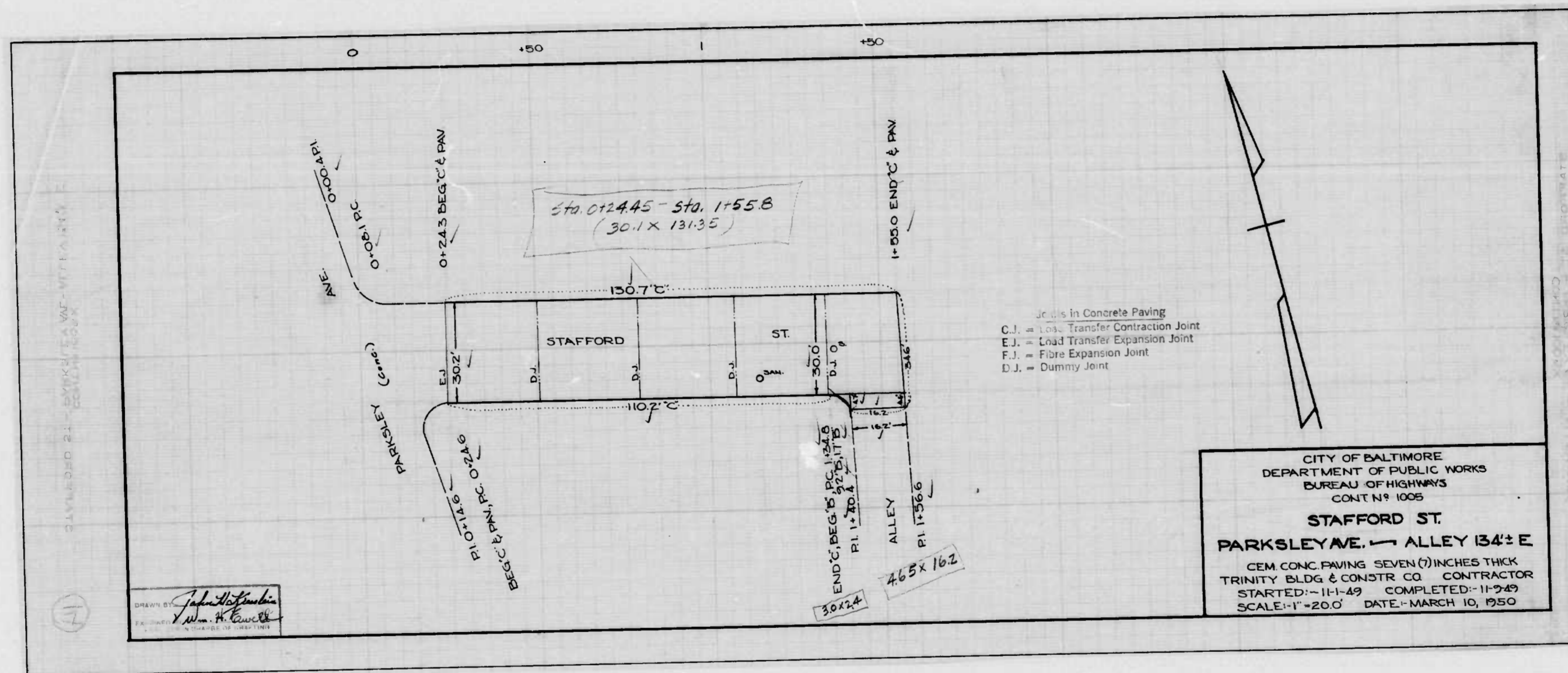




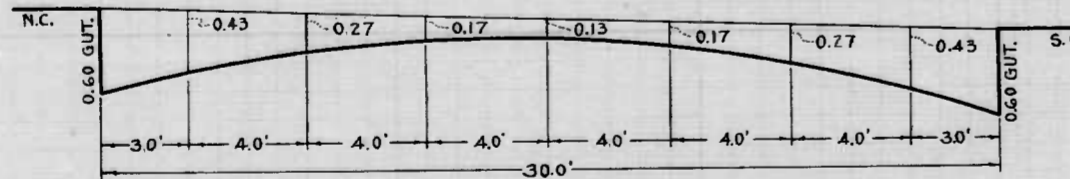
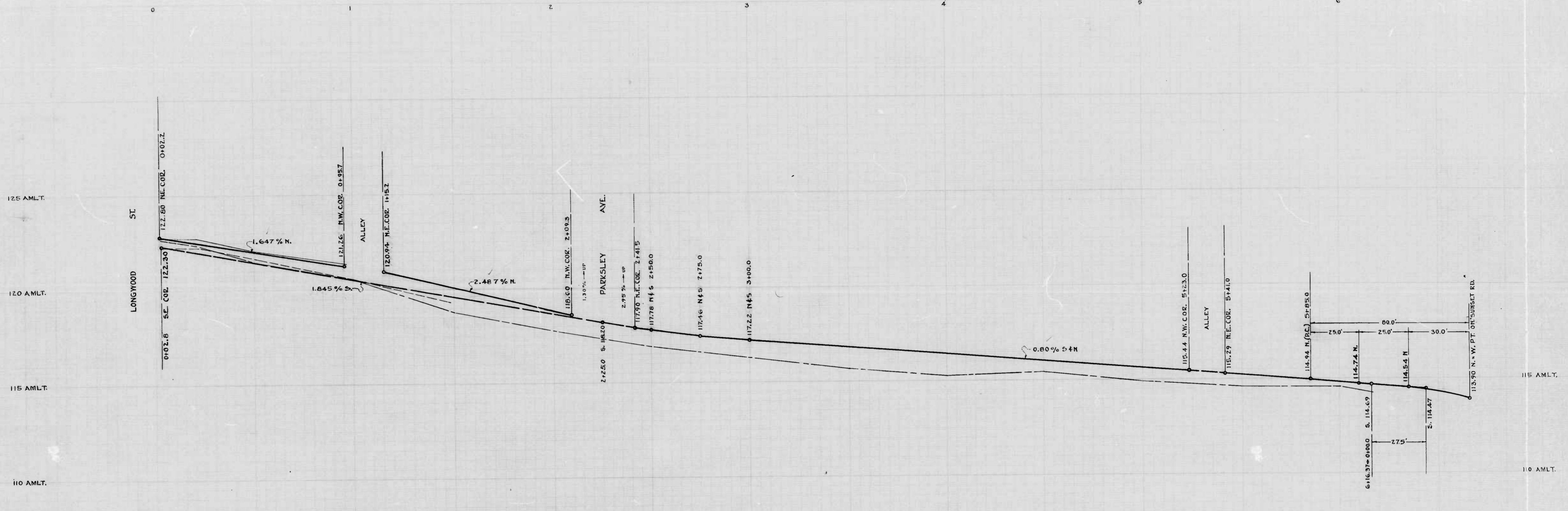




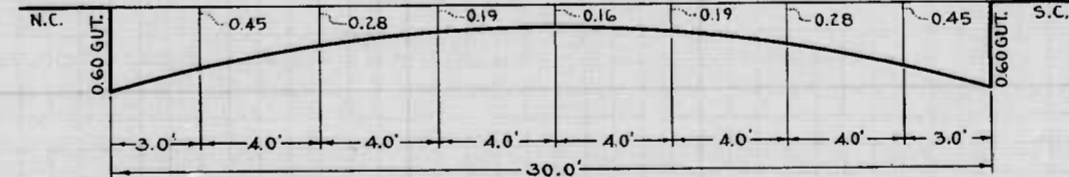






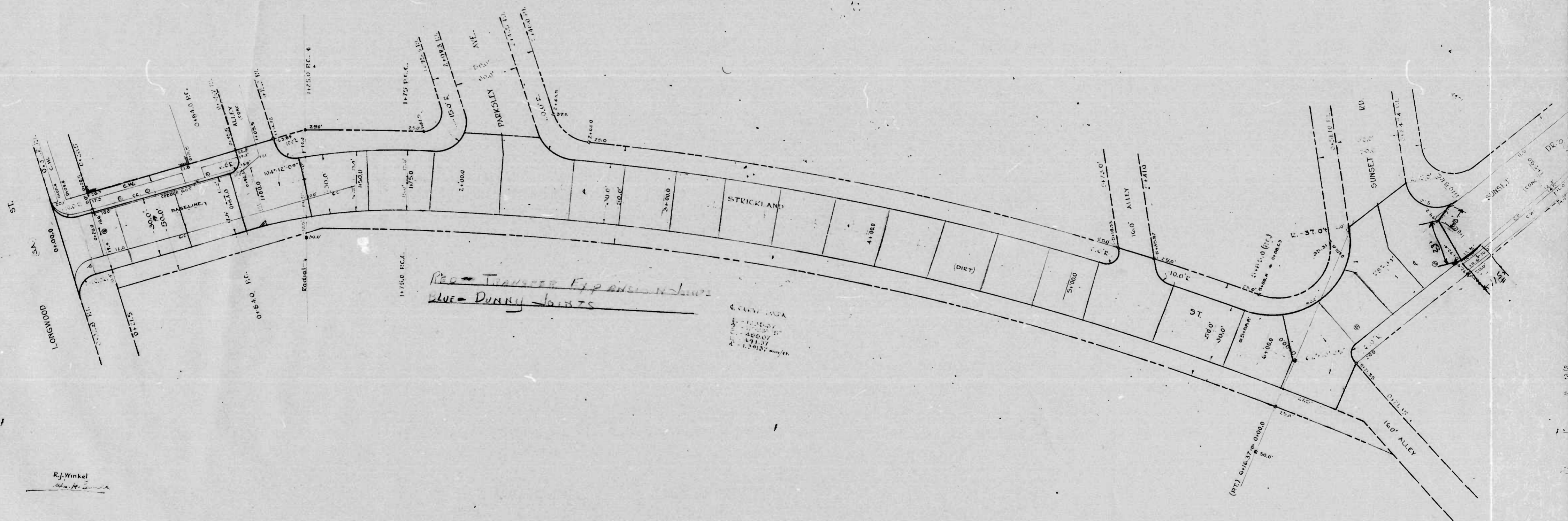


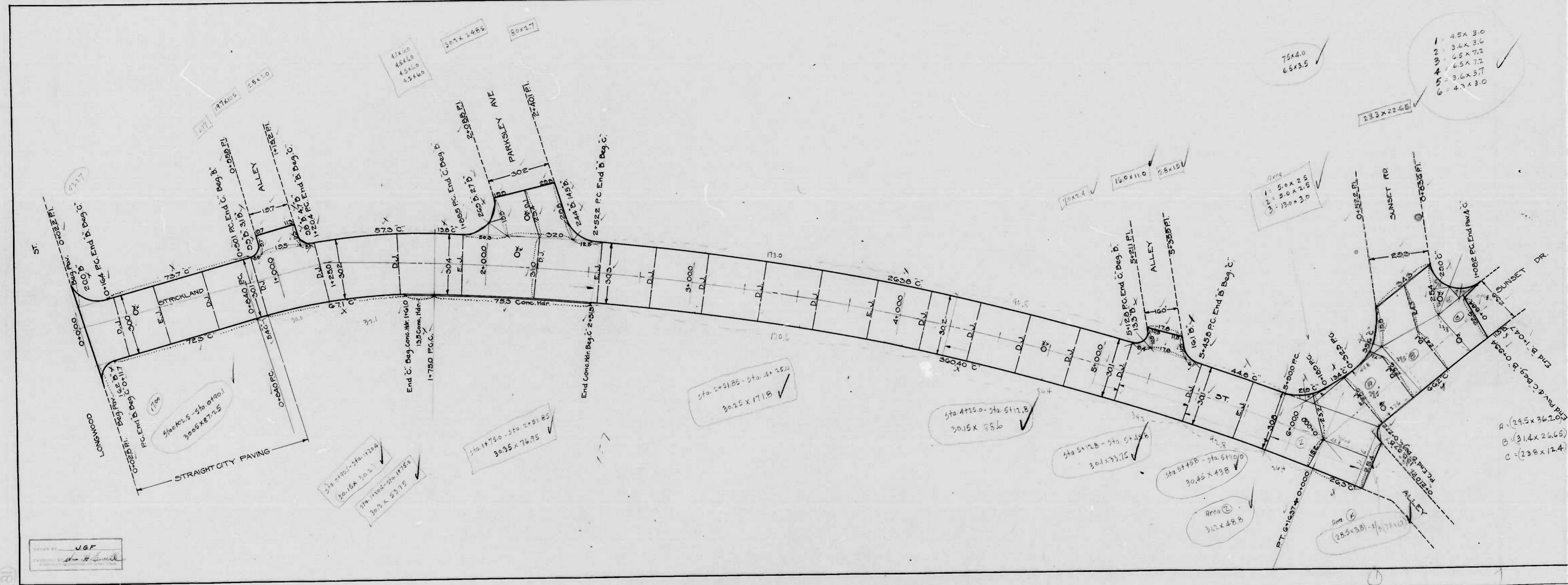
LONGWOOD ST. TO PARKSLEY AVE.



PARKSLEY AVE. TO STA. 5+85.0

DESIGNED BY: R.J. Winkel  
 CHECKED BY: *[Signature]*





- 1 - 4.5 x 3.0
- 2 - 3.6 x 3.6
- 3 - 6.5 x 7.2
- 4 - 6.5 x 7.2
- 5 - 3.6 x 3.7
- 6 - 4.3 x 3.0

- 1 - 5.0 x 2.5
- 2 - 5.0 x 2.5
- 3 - 13.0 x 3.0

Sta. 2+51.85 - Sta. 4+15.0  
30.25 x 171.8

Sta. 4+15.0 - Sta. 5+12.8  
30.15 x 35.6

Sta. 5+12.8 - Sta. 6+45.6  
30.1 x 37.75

Sta. 6+45.6 - Sta. 6+11.0  
30.45 x 43.8

Area (L)  
312 x 48.8

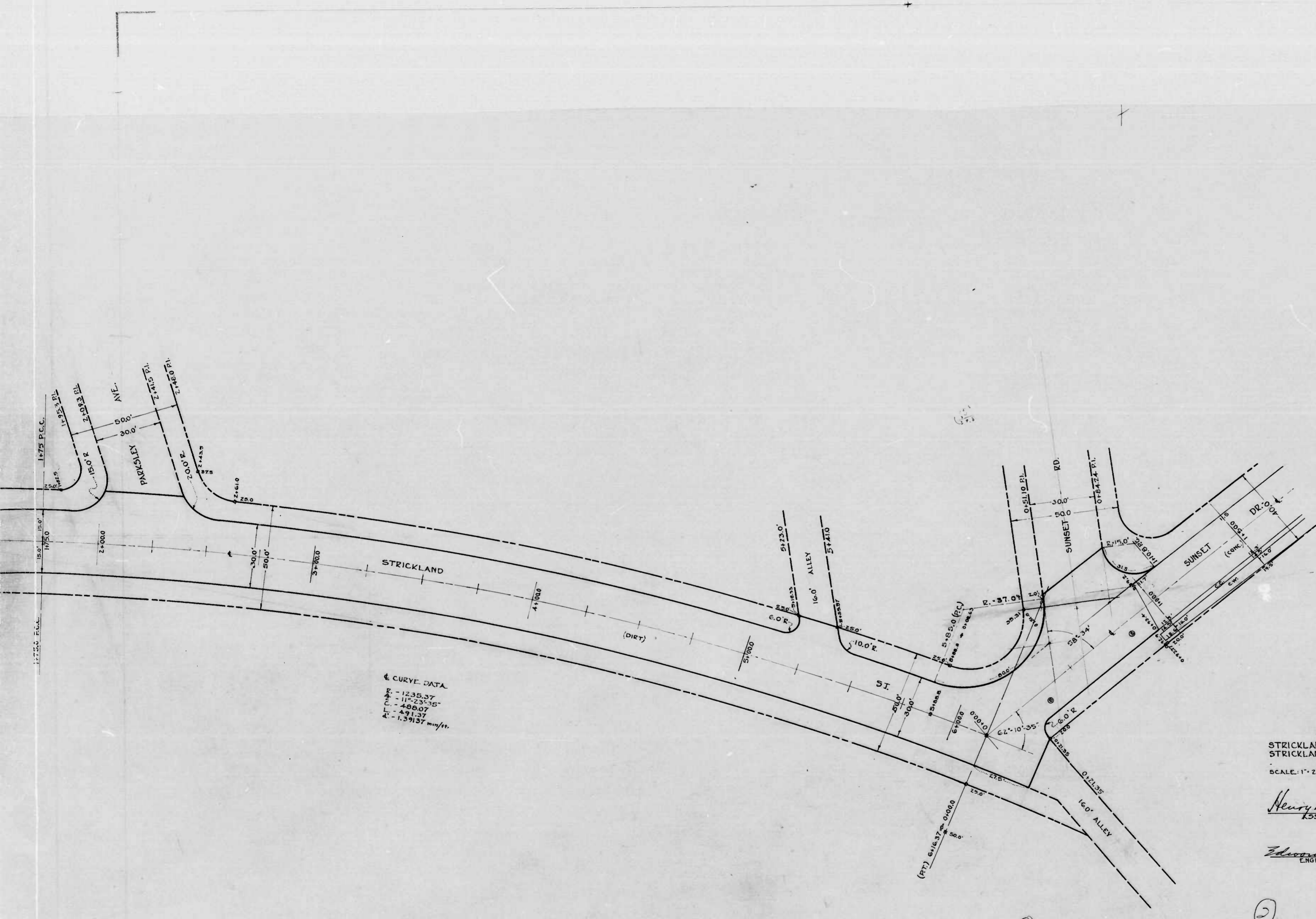
Area (H)  
(25.5 x 3.8) - 1/2 12.0

- A - (29.5 x 36.2)
- B - (31.4 x 26.6)
- C - (23.8 x 12.4) H 35 x 1.4

CITY DEPARTMENT  
BURTON  
CONCRETE  
STRICKLAND ST. -  
CEMENT CONCRETE  
TRINITY BUILDING  
STARTED 9-3-2008  
SCALE - 1" = 20'

UGF  
J.G.F.





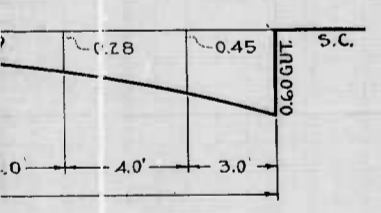
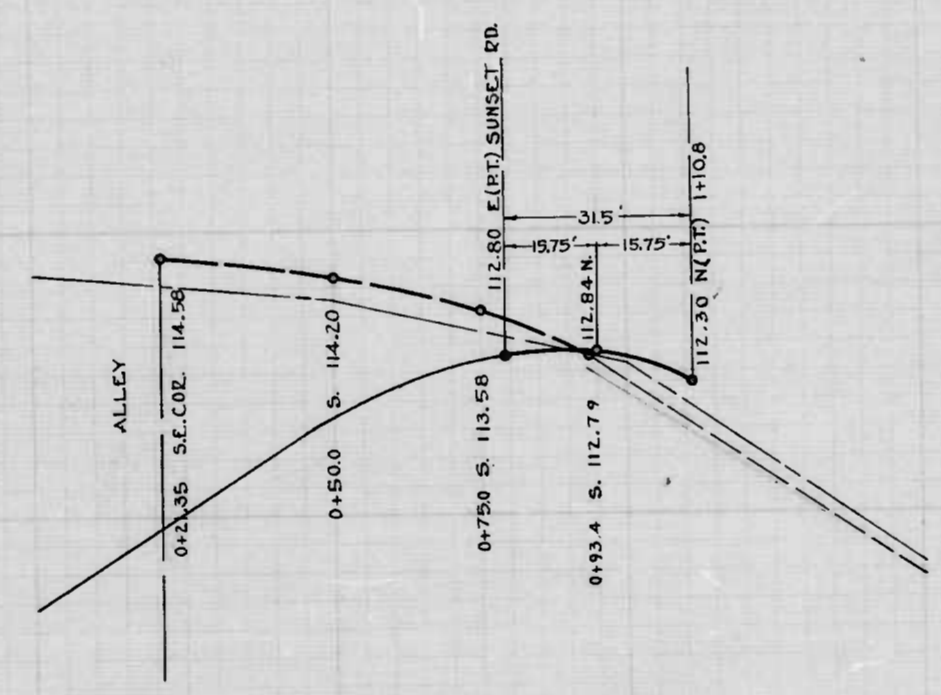
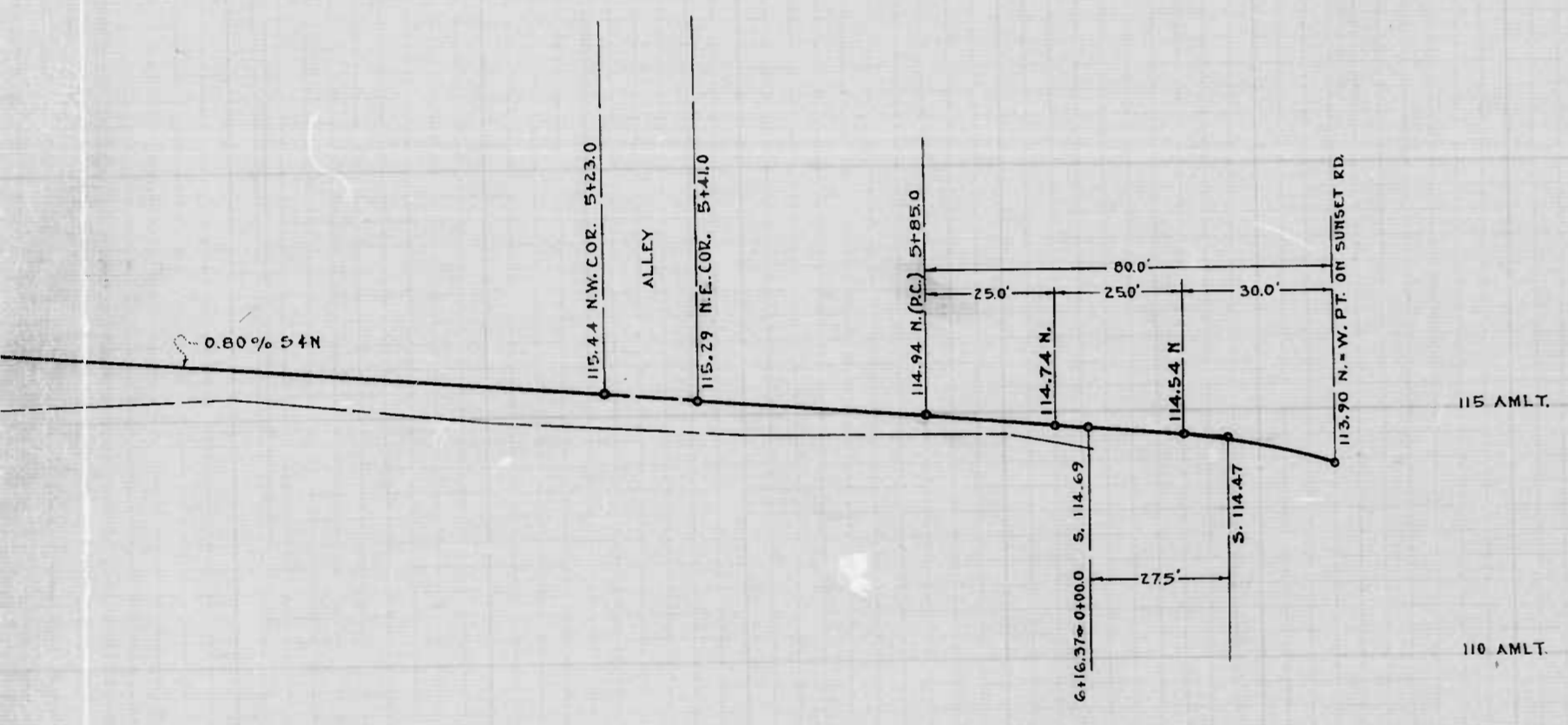
CURVE DATA  
 R - 1235.37  
 Δ - 11°-23'-35"  
 C - 408.07  
 L - 491.37  
 E - 1.59137 min/ft.

NOTE:  
 THE ISSUANCE OF THIS PLAN DOES NOT COMMIT THE CITY TO THE ACCEPTANCE AND/OR IMPROVEMENT OF ANY THOROUGHFARE SHOWN HEREON.  
 SOIL STABILIZATION MATERIALS AND/OR UNDERDRAINS ARE NOT REQUIRED.  
 TO BE CEMENT CONCRETE PAVING SEVEN (7) INCHES THICK.

CITY OF BALTIMORE  
 DEPARTMENT OF PUBLIC WORKS  
 BUREAU OF HIGHWAYS  
 PLAN OF  
 STRICKLAND ST. - AL 120' ± W. PARKSLEY AVE. - E. BL. SUNSET RD.  
 STRICKLAND ST. - E. CL. LONGWOOD ST. - AL 120' ± W. PARKSLEY AVENUE  
 CONT. NO. 1005  
 BOOK NO. 2252  
 SEPT. 3, 1949

APPROVED: *Henry Weisberg* ASSOCIATE ENGINEER  
 APPROVED: *James A. McKay* HIGHWAYS ENGINEER  
 APPROVED: *Edward Hudson* ENGINEER OF SURVEYS  
 APPROVED: *P. L. Holland, Jr.* DIRECTOR OF PUBLIC WORKS

PLANNING BY THE BUREAU OF HIGHWAYS, BALTIMORE, MARYLAND. DRAWN BY THE BUREAU OF HIGHWAYS, BALTIMORE, MARYLAND. CHECKED BY THE BUREAU OF HIGHWAYS, BALTIMORE, MARYLAND.



NOTE:  
 THE ISSUANCE OF THIS PROFILE  
 DOES NOT COMMIT THE CITY TO THE  
 ACCEPTANCE AND/OR IMPROVE-  
 MENT OF ANY THROUGHFARE  
 SHOWN HEREON.

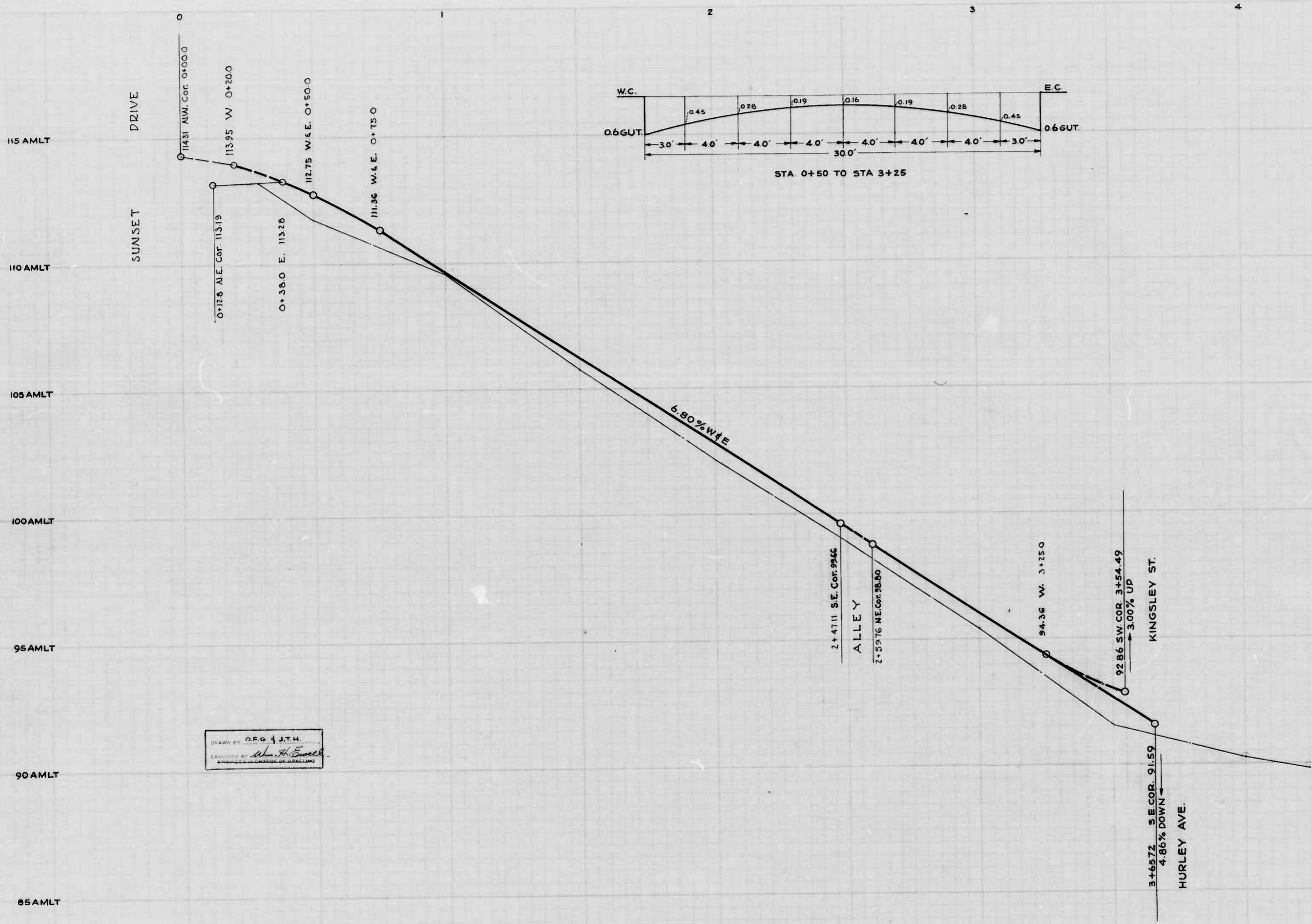
CITY OF BALTIMORE  
 DEPARTMENT OF PUBLIC WORKS  
 BUREAU OF HIGHWAYS  
 PROFILE OF  
 STRICKLAND ST - AL. 120' W. PARKSLEY AVE - E BL SUNSET RD.  
 STRICKLAND ST - ECL LONGWOOD ST - AL. 120' W. PARKSLEY AVE.  
 SCALE HOR 1" = 20.0'      BOOK NO. X-252  
 VER. 1" = 20.00      DATE SEPT. 3, 1949  
 CONT. NO. 1005

APPROVED: *Henry Wisberg* ASSOCIATE ENGINEER  
 APPROVED: *James M. Kay* HIGHWAYS ENGINEER  
 APPROVED: *Edward Heeler* ENGINEER OF SURVEYS  
 APPROVED: *R. H. Holland* DIRECTOR OF PUBLIC WORKS

①      ②



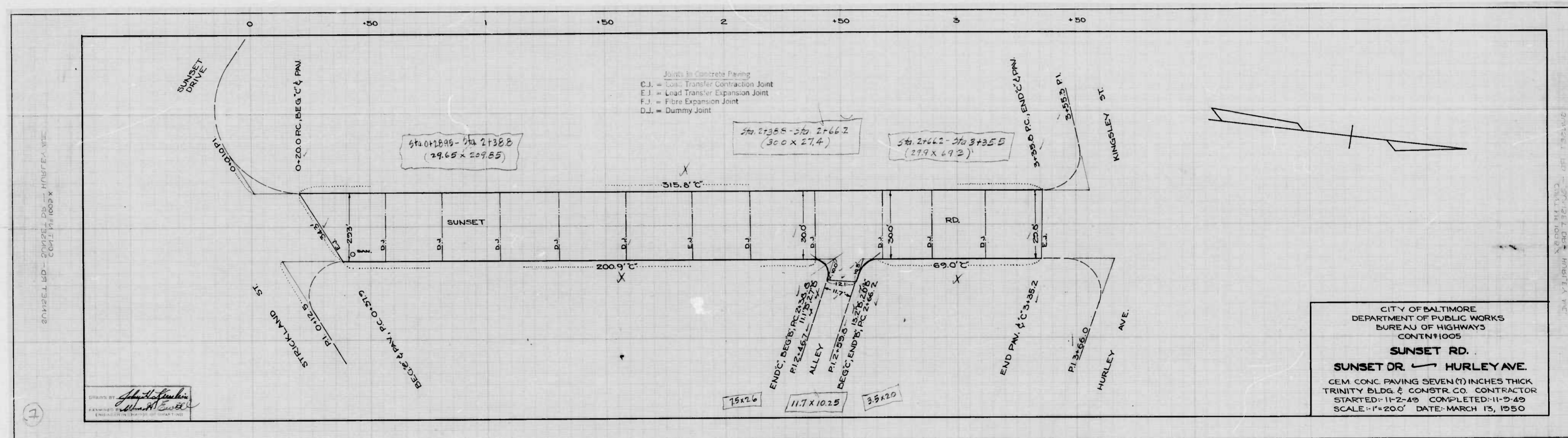


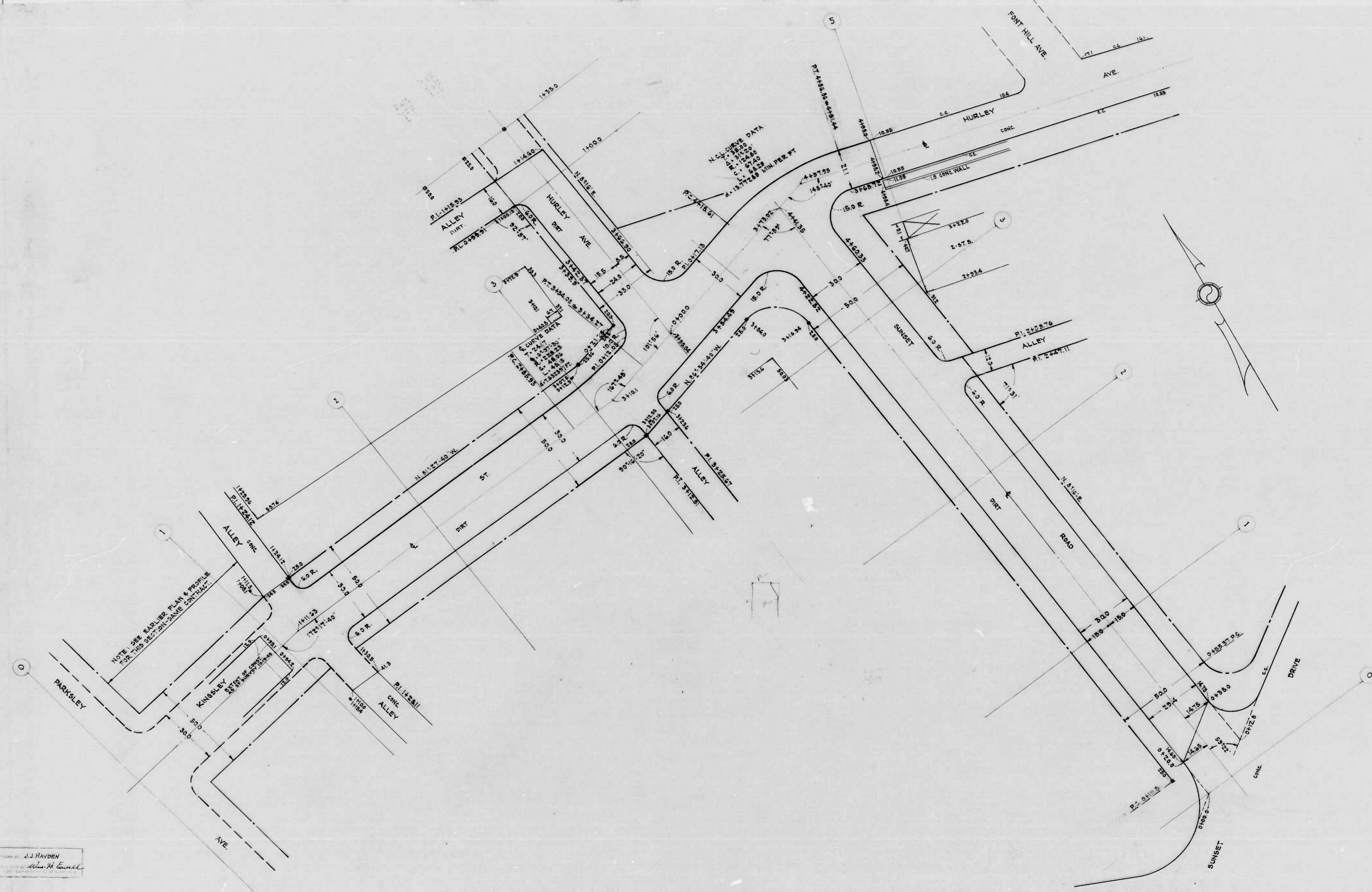


THE ISSUANCE OF THIS PROFILE DOES NOT COMMIT THE CITY TO THE ACCEPTANCE AND IMPROVEMENT OF ANY THROUGHWAY SHOWN HEREON.

DRAWN BY GEO J.J.M.  
 CHECKED BY *John H. Powell*  
 ENGINEER (LICENSED IN MARYLAND)

CITY OF BALTIMORE  
 DEPARTMENT OF PUBLIC WORKS  
 BUREAU OF HIGHWAYS  
**PROFILE OF  
 SUNSET RD.-SUNSET DR. TO HURLEY AVE.**  
 CONT. NO. 1005  
 HORIZ. 1"=20' BOOK NO. C-1005  
 VERT. 1"=20' DATE OCTOBER 28 1949  
 APPROVED APPROVED  
*Nearby* ASSOCIATE ENGINEER APPROVED  
*James M. ...* HIGHWAYS ENGINEER APPROVED  
*Edward M. ...* ENGINEER OF SURVEYS  
*P. L. ...* DIRECTOR OF PUBLIC WORKS



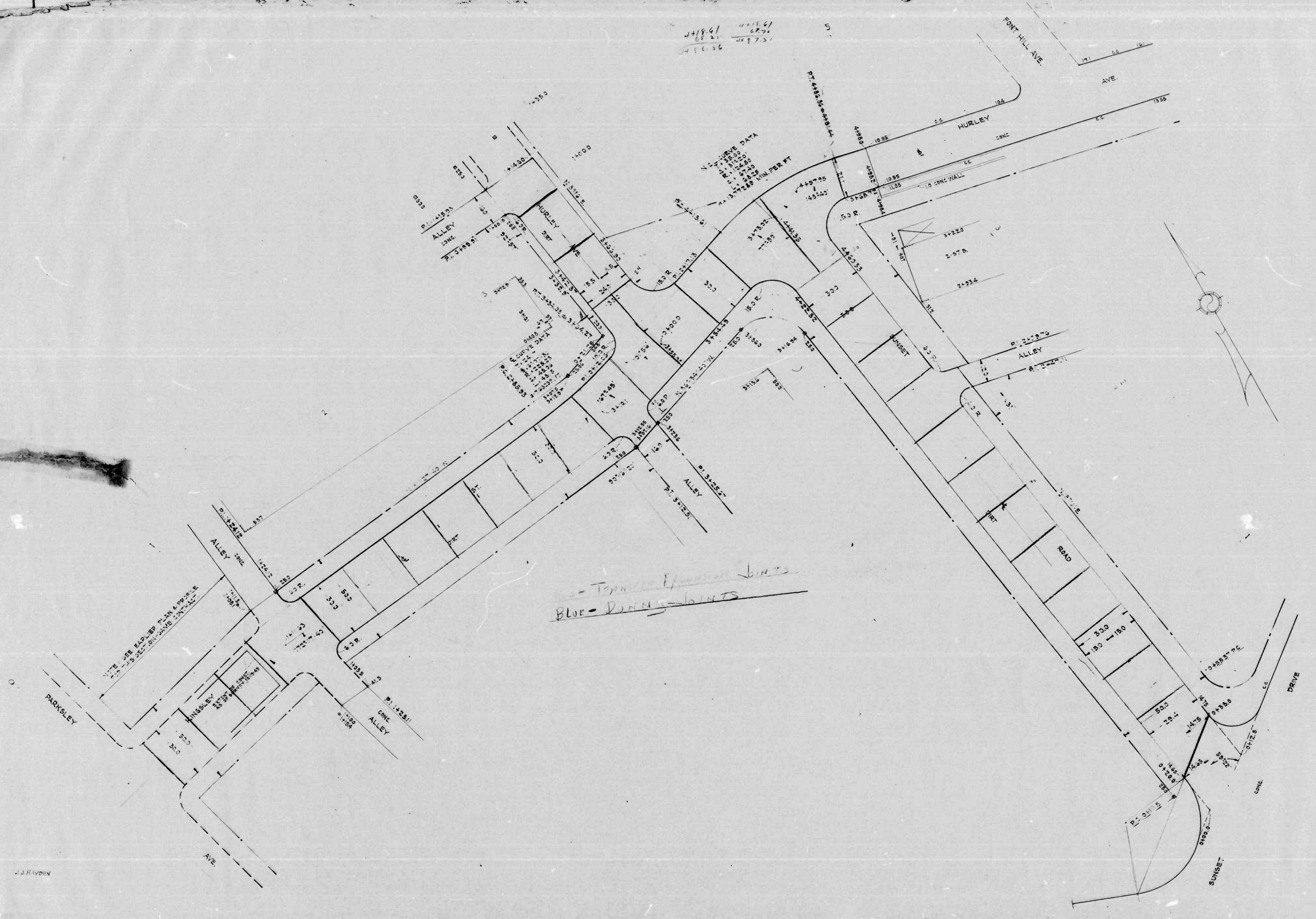


NOTE:  
 THE ISSUANCE OF THIS PLAN DOES NOT COMMIT THE CITY TO THE ACCEPTANCE AND OR IMPROVEMENT OF ANY THOROUGHFARE SHOWN HEREON.  
 SOIL STABILIZATION MATERIALS AND OR UNDERDRAINS ARE NOT REQUIRED.  
 TO BE CEMENT CONCRETE PAVING SEVEN INCHES THICK.

CITY OF BUREAU OF PLANS  
 SUNSET RD. - SUNSET DR.  
 KINGSLEY ST. - AL. 102' E. OF PA.  
 HURLEY AVE. - KINGSLEY ST. T.  
 CONT. N.  
 SCALE - 1" = 20'  
 APPROVED -  
 Henry Weicker  
 ASSOCIATE ENGINEER  
 APPROVED -  
 Edward Weicker  
 ENGINEER OF SURVEYS

J.J. HAYDEN  
 ALLEN H. COWELL

44894  
44896  
44898  
44900  
44902  
44904  
44906  
44908  
44910  
44912  
44914  
44916  
44918  
44920  
44922  
44924  
44926  
44928  
44930  
44932  
44934  
44936  
44938  
44940  
44942  
44944  
44946  
44948  
44950  
44952  
44954  
44956  
44958  
44960  
44962  
44964  
44966  
44968  
44970  
44972  
44974  
44976  
44978  
44980  
44982  
44984  
44986  
44988  
44990  
44992  
44994  
44996  
44998  
45000



NOTE:

TO BE CEMENT CONCRETE  
PAVING SEVEN INCHES THICK.

CITY OF BALTIMORE  
DEPARTMENT OF PUBLIC WORKS  
BUREAU OF HIGHWAYS  
PLAN OF  
SUNSET RD - SUNSET DR. TO HURLEY  
KINGSLEY ST - AL 102' E. OF PARKSLEY ST.  
HURLEY AVE - KINGSLEY ST TO AL 80' N.  
CONT. N-1005

SCALE - 1" = 200'

APPROVED - \_\_\_\_\_

ASSOCIATE ENGINEER - \_\_\_\_\_

ENGINEER OF SURVEYS - \_\_\_\_\_

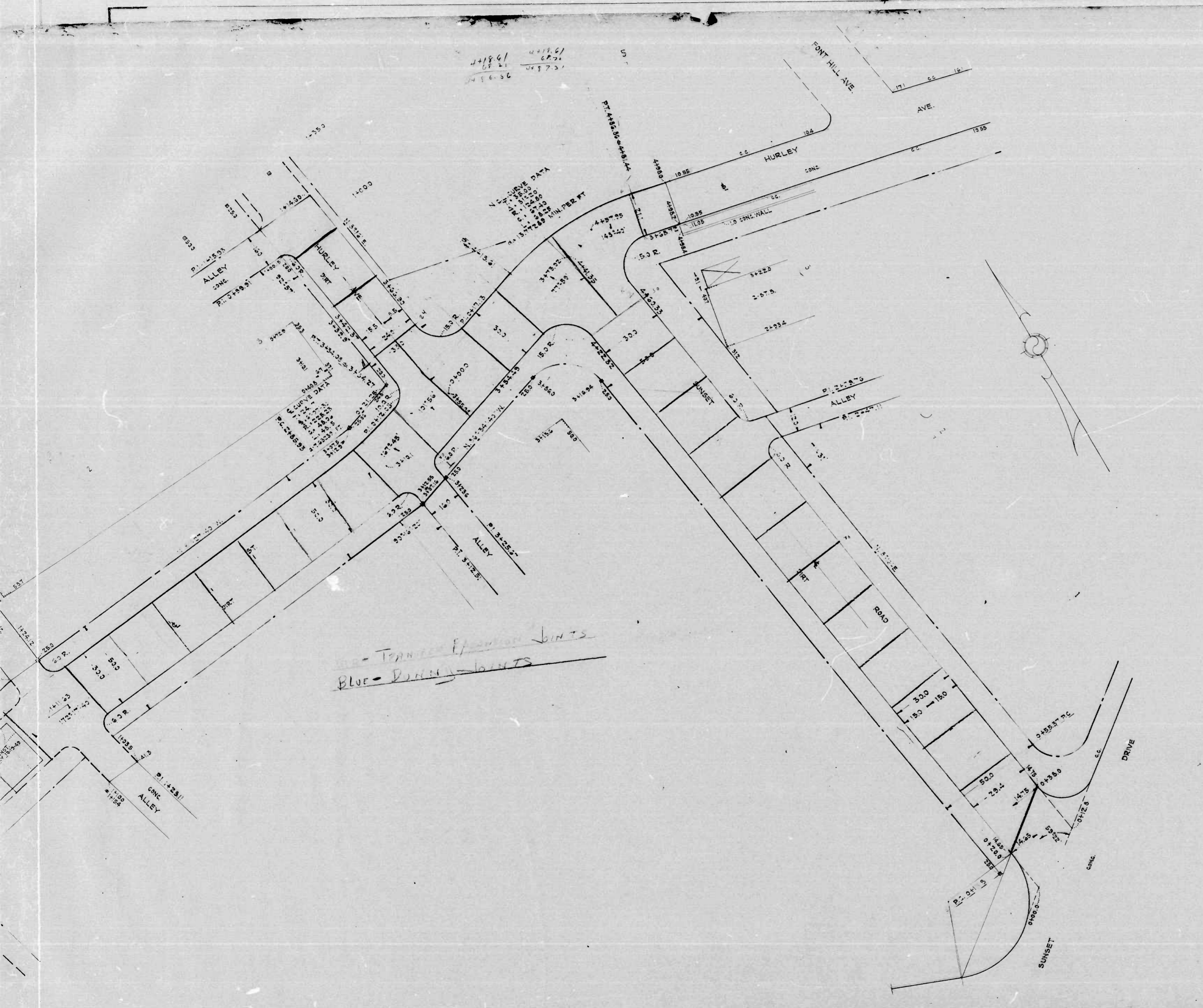
HIGHWAY DIRECTOR - \_\_\_\_\_

J. J. HAYDEN

①

②





HURLEY AVE - KINGSLEY ST. TO FT. ST. H. H. H. KINGSLEY ST.  
 KINGSLEY ST. - AL 102<sup>TH</sup> E. OF PARKLEY ST. TO HURLEY AVE.  
 HURLEY AVE - KINGSLEY ST. TO AL. 50<sup>TH</sup> N. OF KINGSLEY ST.  
 SUNSET RD - SUNSET DR. TO HURLEY AVE.  
 PLAN NO.

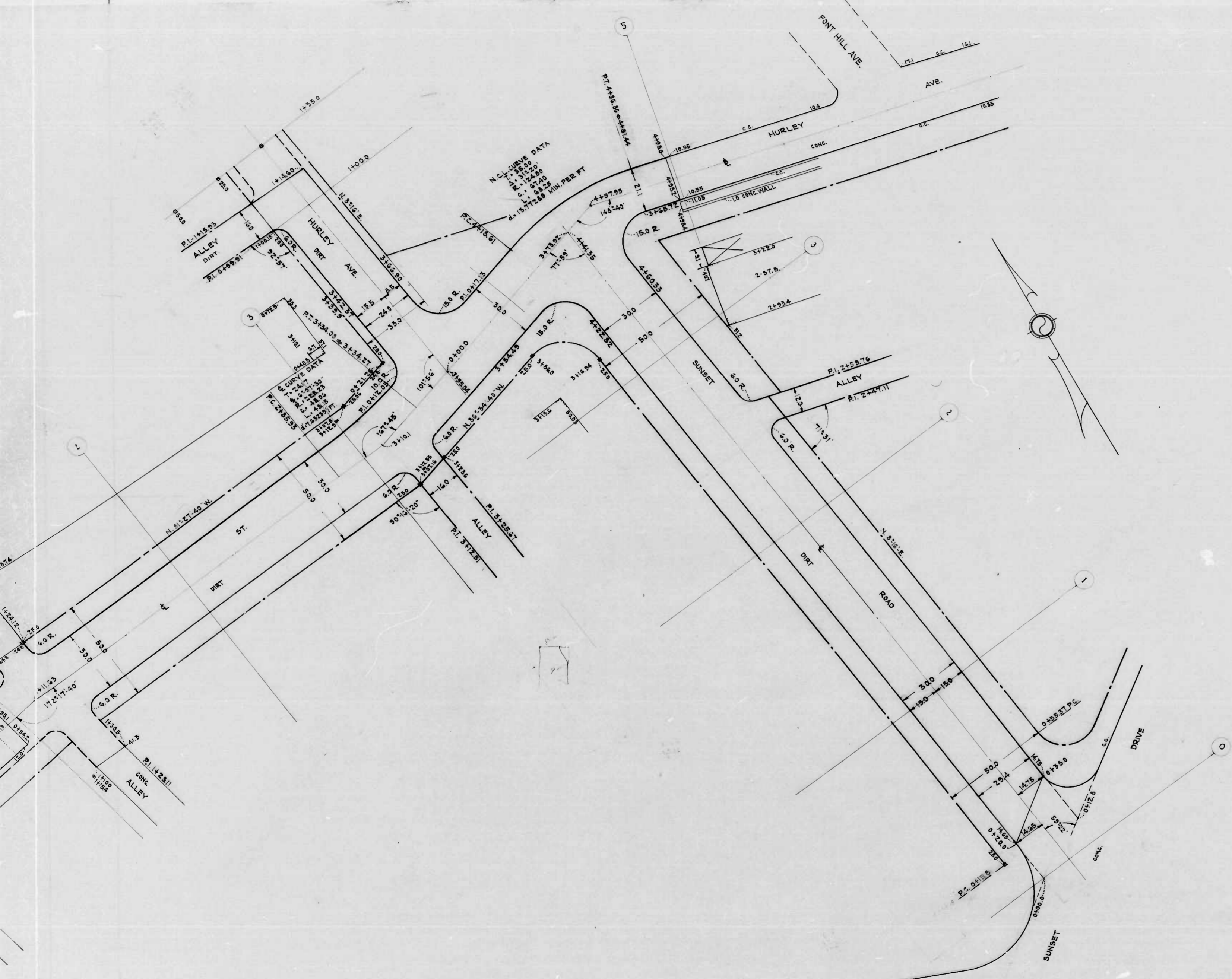
NOTE:  
 TO BE CEMENT CONCRETE  
 PAVING SEVEN INCHES THICK.

CITY OF BALTIMORE  
 DEPARTMENT OF PUBLIC WORKS  
 BUREAU OF HIGHWAYS  
 PLAN OF  
 SUNSET RD - SUNSET DR. TO HURLEY AVE.  
 KINGSLEY ST. - AL 102<sup>TH</sup> E. OF PARKLEY ST. TO HURLEY AVE.  
 HURLEY AVE - KINGSLEY ST. TO AL. 50<sup>TH</sup> N. OF KINGSLEY ST.  
 CONT. N° 1005  
 SCALE: - 1" = 20.0'  
 APPROVED: \_\_\_\_\_  
 ASSOCIATE ENGINEER  
 APPROVED: \_\_\_\_\_  
 ENGINEER OF SURVEYS

BOOK N° C. 1005  
 OCTOBER 28, 1949  
 APPROVED: \_\_\_\_\_  
 HIGHWAYS ENGINEER  
 APPROVED: \_\_\_\_\_  
 DIRECTOR OF PUBLIC WORKS

①

②



NOTE:  
 THE ISSUANCE OF THIS PLAN DOES NOT COMMIT THE CITY TO THE ACCEPTANCE AND/OR IMPROVEMENT OF ANY THOROUGHFARE SHOWN HEREIN.  
 SOIL STABILIZATION MATERIALS AND/OR UNDERDRAINS ARE NOT REQUIRED.  
 TO BE CEMENT CONCRETE PAVING SEVEN INCHES THICK.

CITY OF BALTIMORE  
 DEPARTMENT OF PUBLIC WORKS  
 BUREAU OF HIGHWAYS  
 PLAN OF  
 SUNSET RD. - SUNSET DR. TO HURLEY AVE.  
 KINGSLEY ST. - AL. 102' E. OF PARKLEY AVE. TO HURLEY AVE.  
 HURLEY AVE. - KINGSLEY ST. TO AL. 80' N. OF KINGSLEY ST.  
 CONT. N#-1005

SCALE: 1" = 20.0'

BOOK N#-C1005  
 OCTOBER 28, 1949

APPROVED: *Henry Weisberg*  
 ASSOCIATE ENGINEER

APPROVED: *James H. McKay*  
 HIGHWAYS ENGINEER

APPROVED: *Edward Maclean*  
 ENGINEER OF SURVEYS

APPROVED: *Paul Holland*  
 DIRECTOR OF PUBLIC WORKS

UNLESS OTHERWISE SPECIFIED, ALL DIMENSIONS ARE IN FEET AND DECIMALS THEREOF. ALL CURVES ARE TO BE OPEN CURVES UNLESS OTHERWISE SPECIFIED. ALL DISTANCES ARE TO BE MEASURED ALONG THE CENTERLINE OF THE THOROUGHFARE SHOWN HEREIN.