

10 MD DA-NI-5A 1 12

**INDEX OF SHEETS**

SHEET NO.1	TITLE PAGE & LAYOUT
2	TYPICAL CROSS SECTIONS OF IMPROVEMENT
3	PLAN & PROFILE ——— STA.80+71.4 TO STA.90+50.00
4	PLAN CHESAPEAKE AVE. ——— 90+06.46 " " 92+81.80
4A	PLAN HANOVER ST. ——— 00+51.23 " " 6+32.57
5	PROFILE CHESAPEAKE AVE. ——— 90+06.46 " " 92+81.80
5	PROFILE HANOVER ST. ——— 00+51.23 " " 6+32.57
6	ELEVATIONS OF IMPROVEMENT—HANOVER ST.
7	PLAN & PROFILE —SEWER
8	STANDARD DETAILS " "
9	DETAILS " "
10	" " " "
11	SUMMARY " "
12	" " PAVING " "

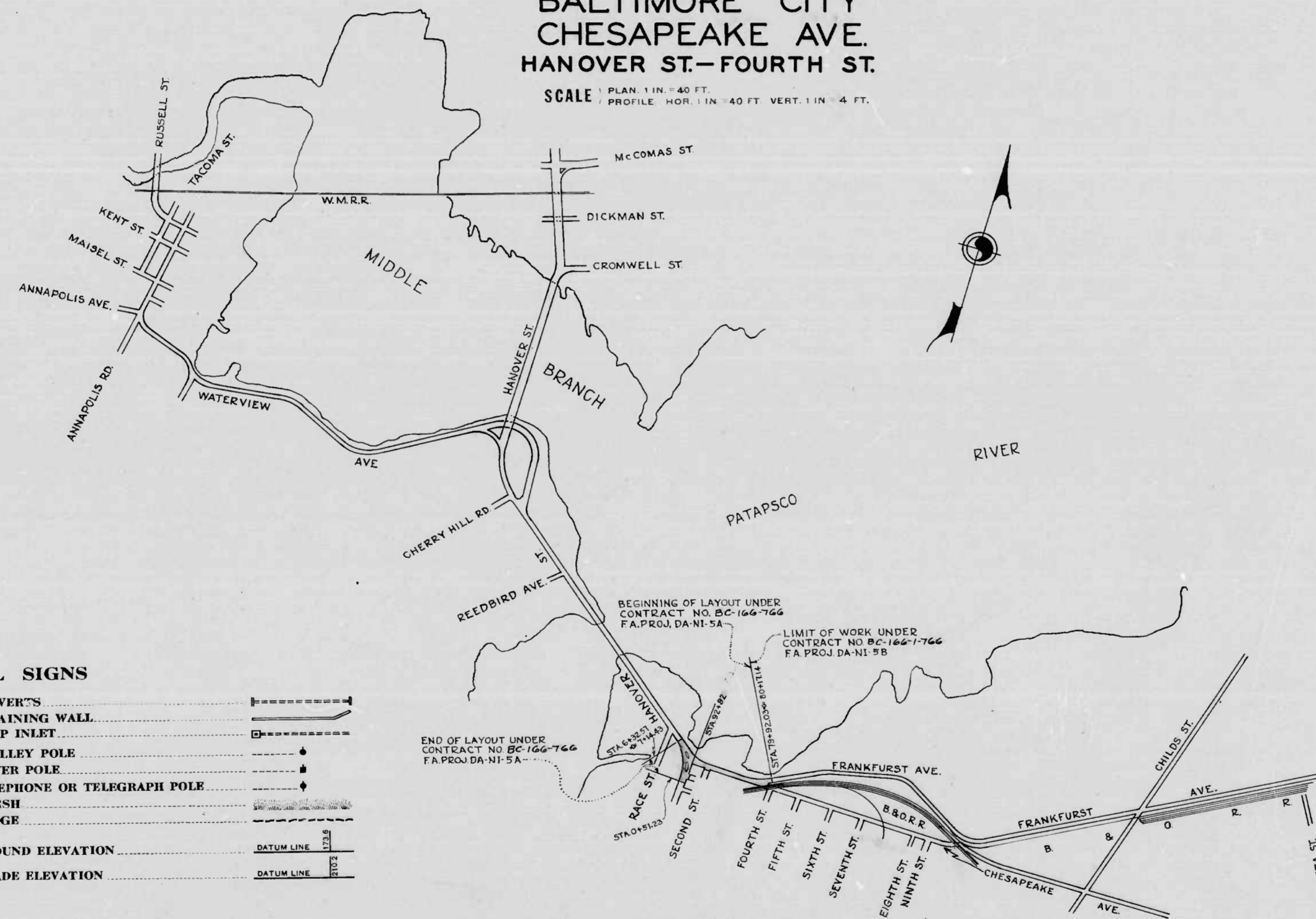
STATE OF MARYLAND  
STATE ROADS COMMISSION

PLAN AND PROFILE OF PROPOSED  
STATE HIGHWAY

FEDERAL AID PROJECT NO. DA-NI-5-A

BALTIMORE CITY  
CHESAPEAKE AVE.  
HANOVER ST.—FOURTH ST.

SCALE 1 PLAN 1 IN. = 40 FT.  
1 PROFILE HOR. 1 IN. = 40 FT. VERT. 1 IN. = 4 FT.



**CONVENTIONAL SIGNS**

STATE AND NATIONAL LINE	—————	CULVERT'S	—————
COUNTY LINE	—————	RETAINING WALL	—————
CITY OR VILLAGE	—————	DROP INLET	—————
FENCE LINE	—————	TROLLEY POLE	—————
GUARD RAIL	—————	POWER POLE	—————
UNFENCED PROPERTY	—————	TELEPHONE OR TELEGRAPH POLE	—————
RIGHT OF WAY LINE	—————	MARSH	—————
TRAVELED WAY	—————	HEDGE	—————
RAILROADS	—————	GROUND ELEVATION	DATUM LINE
BASE OR SURVEY LINE	—————	GRADE ELEVATION	DATUM LINE

LAYOUT  
SCALE: 1" = 1000'

FOR DETAILS OF CULVERTS, ETC. SEE STANDARD SHEET.  
STATE SPECIFICATIONS AND STANDARD PLANS ON FILE IN BUREAU OF PUBLIC ROADS.

BC-166-766

APPROVED  
*George Cobb*  
CHIEF ENGINEER, CITY OF BALTIMORE

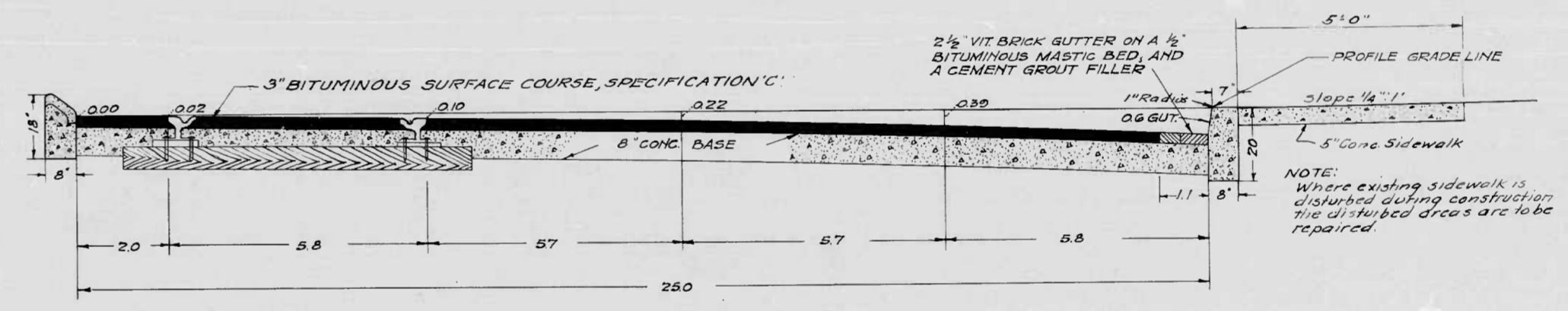
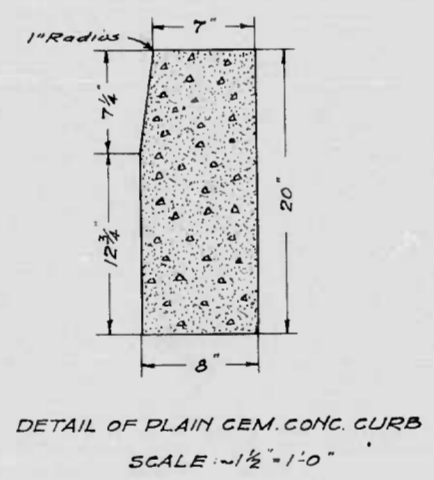
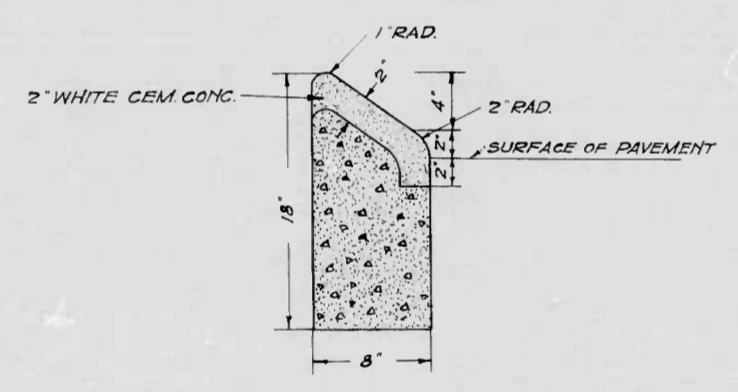
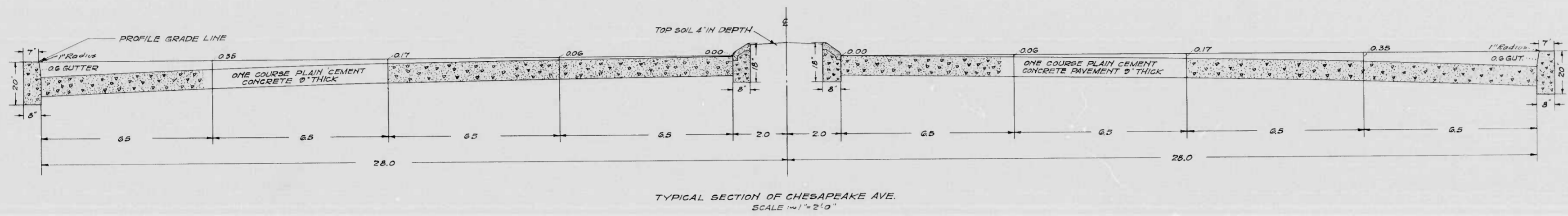
APPROVED  
*William T. Ballard*  
CHIEF ENGINEER, STATE ROADS COMMISSION 4/27/42

RECOMMENDED FOR APPROVAL  
DISTRICT ENGINEER  
PUBLIC ROADS ADMINISTRATION  
FEDERAL WORKS AGENCY

APPROVED  
COMMISSIONER  
PUBLIC ROADS ADMINISTRATION  
FEDERAL WORKS AGENCY

MICROFILMED ON APERTURE CARDS

FED. ROAD DIST. NO.	STATE	FED. AID PROJ. NO.	SHEET NO.	TOTAL SHEETS
10	MD	DA-NI-5A	2	12



NOTE:  
8" MACADAM BASE COURSE (BITUMINOUS TREATED)  
TO BE CONSTRUCTED BETWEEN STA. 4144 & 5174

NOTES:  
CHESAPEAKE AVE. TO BE ONE COURSE PLAIN CEMENT CONCRETE PAVEMENT (9" THICK) STA. 8011.14 TO STA. 22155.55  
HANOVER ST. TO BE SURFACED WITH 3" BITUMINOUS SURFACE COURSE, SPECIFICATION 'C', ON A PLAIN CEMENT CONCRETE BASE (8" THICK) STA. 0181.23 TO STA. 6132.87 @ 114.43  
TOP SOIL 4" IN DEPTH TO BE PLACED IN ALL PARKED AREAS.  
CEMENT WALK TO BE INSTALLED WHEREVER EXISTING WALKS ARE DISTURBED.

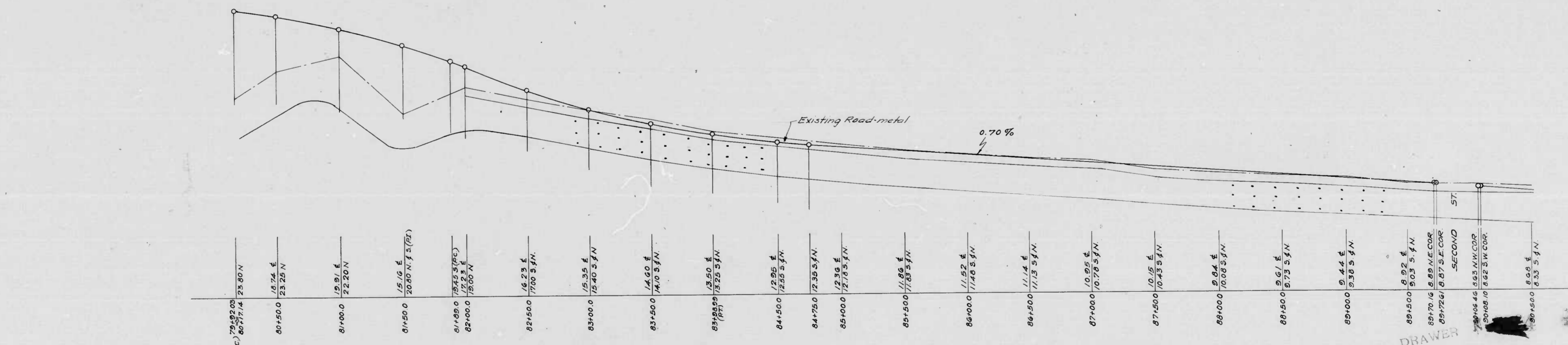
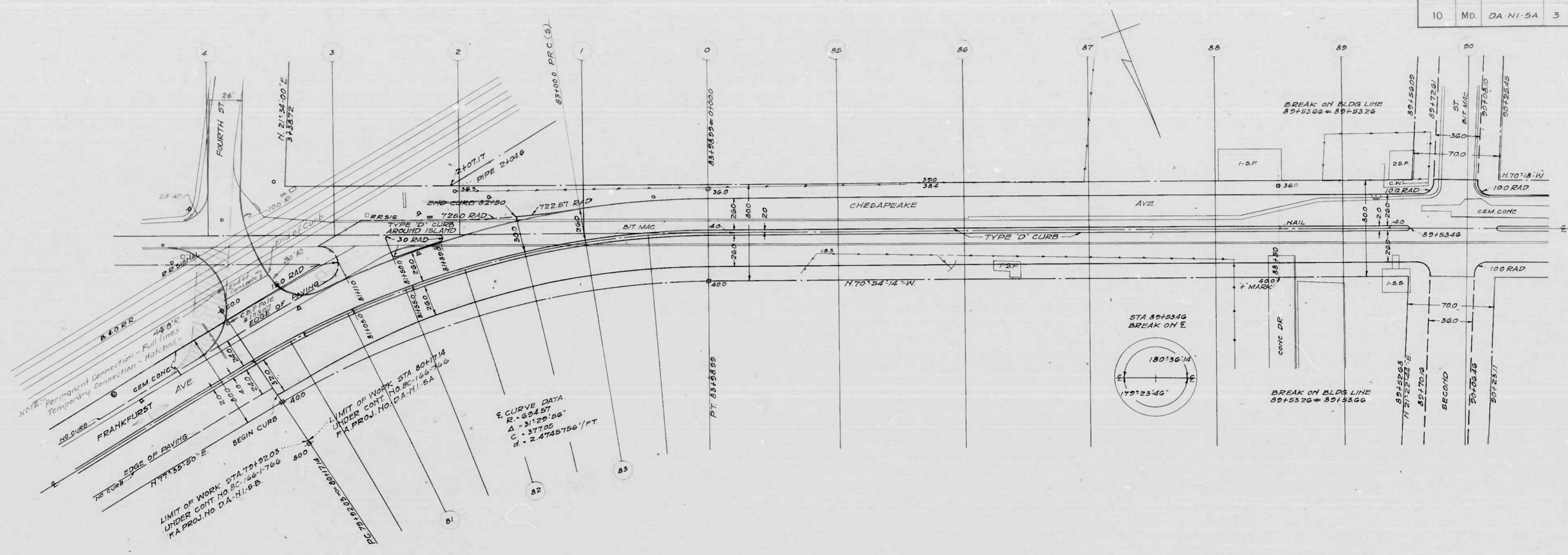
SOIL SYMBOL  
A-2 Sand, with fines.

DRAWN

APPROVED: *William T. Ballard* 4/27/42  
MICROFILMED ON APERTURE CARDS

REVISIONS	STATE OF MARYLAND STATE ROADS COMMISSION PLANS AND SURVEYS DEPARTMENT CHESAPEAKE AVE - HANOVER ST TO FOURTH ST CONT. NO. 85-116-7A F & P NO. DA-NI-5A SHEET NO. 2 OF 12 PREL. TRAC BY _____ FINAL TRAC BY _____
-----------	--

FED. ROAD DIST. NO.	STATE	FED. AID PROJ. NO.	SHEET NO.	TOTAL SHEETS
10	MD.	DA-NI-5A	3	12



80+00.0	23.80 N
80+50.0	18.74 E 23.25 N
81+00.0	19.91 E 22.20 N
81+50.0	15.16 E 20.80 N (P)
82+00.0	19.43 E 19.60 N
82+50.0	16.23 E 17.00 S (N)
83+00.0	15.35 E 15.40 S (N)
83+50.0	14.60 E 14.00 S (N)
84+00.0	13.50 E 13.25 S (N)
84+50.0	12.95 E 12.35 S (N)
85+00.0	12.30 E 12.15 S (N)
85+50.0	11.80 E 11.00 S (N)
86+00.0	11.52 E 11.40 S (N)
86+50.0	11.14 E 11.15 S (N)
87+00.0	10.95 E 10.70 S (N)
87+50.0	10.45 E 10.45 S (N)
88+00.0	9.84 E 10.00 S (N)
88+50.0	9.61 E 9.75 S (N)
89+00.0	9.44 E 9.30 S (N)
89+50.0	8.92 E 9.05 S (N)
89+70.0	8.89 N.E. COR
89+75.0	8.87 S.E. COR
89+80.0	8.82 S.W. COR
89+85.0	8.65 E 8.55 S (N)

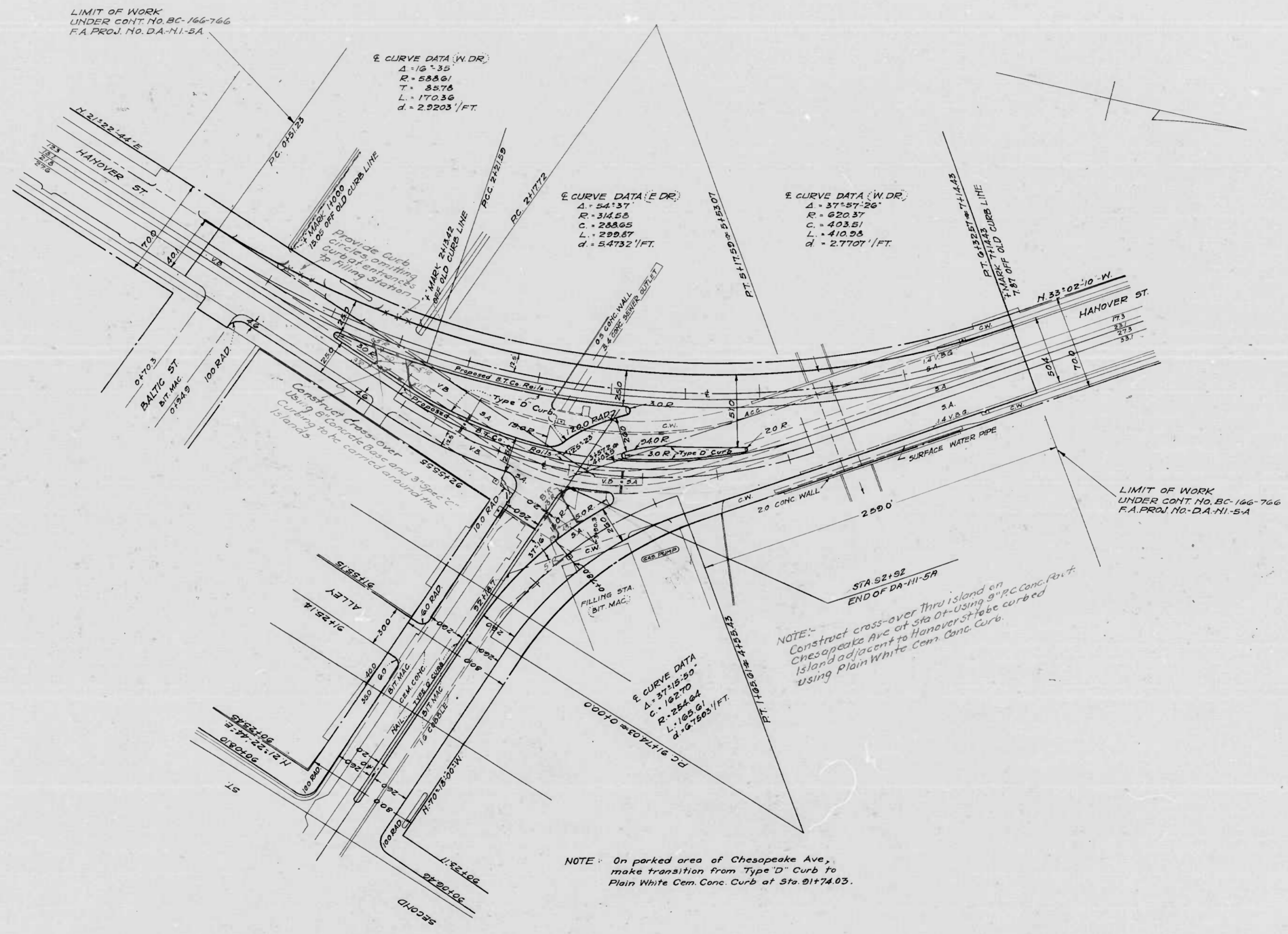
SCALE | PLAN 1 IN. = 40 FT.  
| PROFILE - HOR. 1 IN. = 40 FT. - VERT. 1 IN. = 4 FT.

REVISIONS	STATE OF MARYLAND STATE ROADS COMMISSION PLANS AND SURVEYS DEPARTMENT
	CHESAPEAKE AVE - HANOVER ST TO FOURTH ST
	CONT. NO. 80-166-766 F.A.P. NO. DA-NI-5A SHEET NO. 3 OF 12
	PREL. TRAC. BY _____ FINAL TRAC. BY _____

MICROFILMED ON APERTURE CARDS

1173

FED. ROAD DIST. NO.	STATE	FED. AID PROJ. NO.	SHEET NO.	TOTAL SHEETS
10	MD.	DA-NI-5A	4	12



SCALE | PLAN - 1 IN. = 40 FT.  
 | PROFILE - HOR. 1 IN. = 40 FT. VERT. 1 IN. = 4 FT.

REVISIONS
Revision in Cross-over 8/28/42

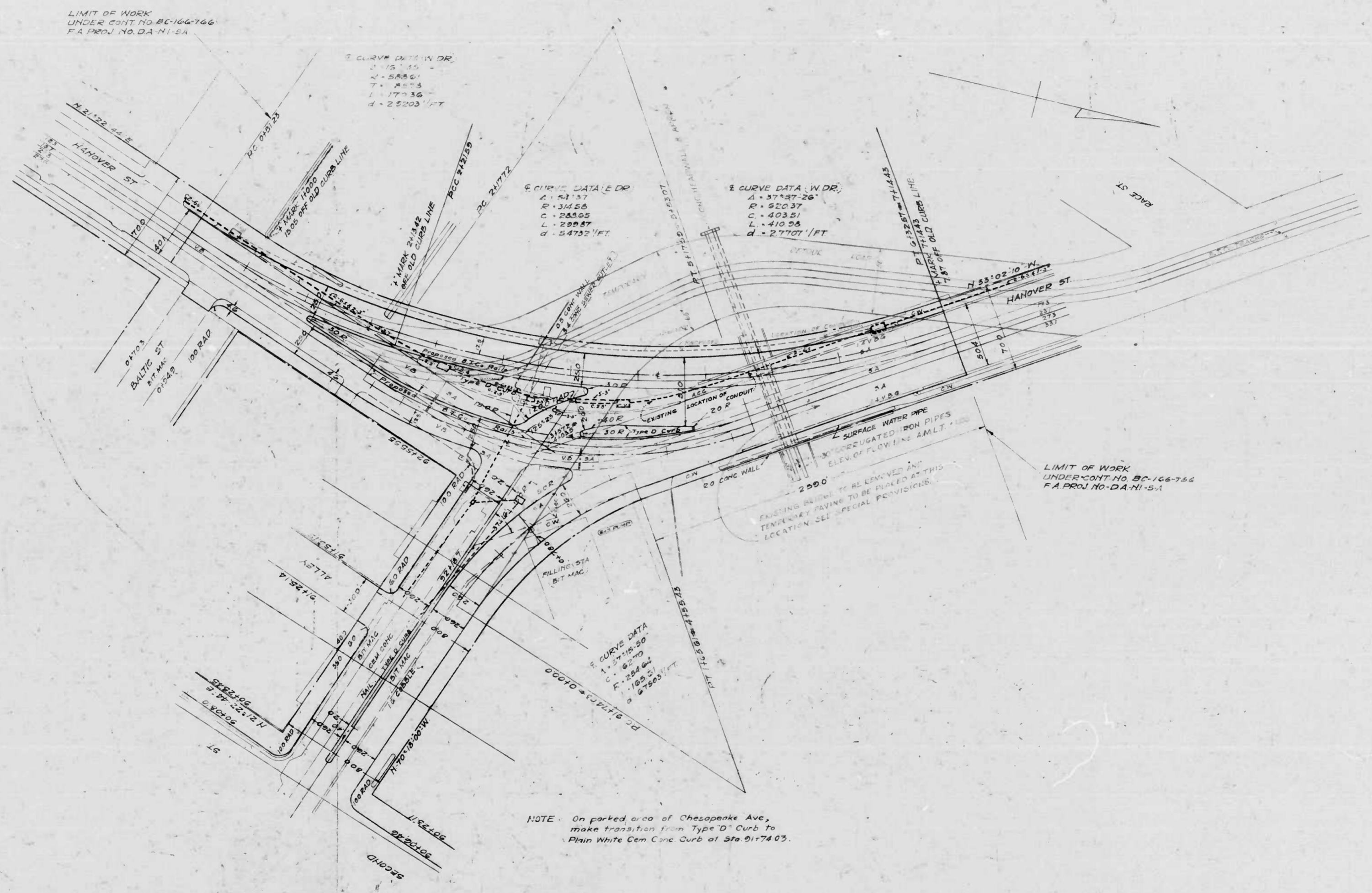
STATE OF MARYLAND  
 STATE ROADS COMMISSION  
 PLANS AND SURVEYS DEPARTMENT

CHESAPEAKE AVE - HANOVER ST TO FOURTH ST  
 CONT. NO. BC-166-766 F.A.P. NO. DA-NI-5A SHEET NO. 4 of 12  
 PREL. TRAC. BY: FINAL TRAC. BY: J.J.H.

DRAWER

MICROFILMED ON APERTURE CARDS

FED. ROAD DIST. NO.	STATE	CONTRACT NO.	SHEET NO.	TOTAL SHEETS
10	MD	DA-NI-5A	4A	12



LIMIT OF WORK  
UNDER CONT NO. BC-166-766  
F.A. PROJ. NO. DA-NI-5A

3. CURVE DATA IN DR.  
A = 37137.26  
R = 22037  
C = 40351  
L = 410.24  
d = 27707.1 FT

6. CURVE DATA E DR.  
A = 37137.26  
R = 22037  
C = 40351  
L = 410.24  
d = 27707.1 FT

7. CURVE DATA W DR.  
A = 37137.26  
R = 22037  
C = 40351  
L = 410.24  
d = 27707.1 FT

CURVE DATA  
A = 37137.26  
R = 22037  
C = 40351  
L = 410.24  
d = 27707.1 FT

NOTE: On parked area of Chesapeake Ave,  
make transition from Type 'D' Curb to  
Plain White Cem Cone Curb at Sta 91+74.03.

LIMIT OF WORK  
UNDER CONT NO. BC-166-766  
F.A. PROJ. NO. DA-NI-5A

1179

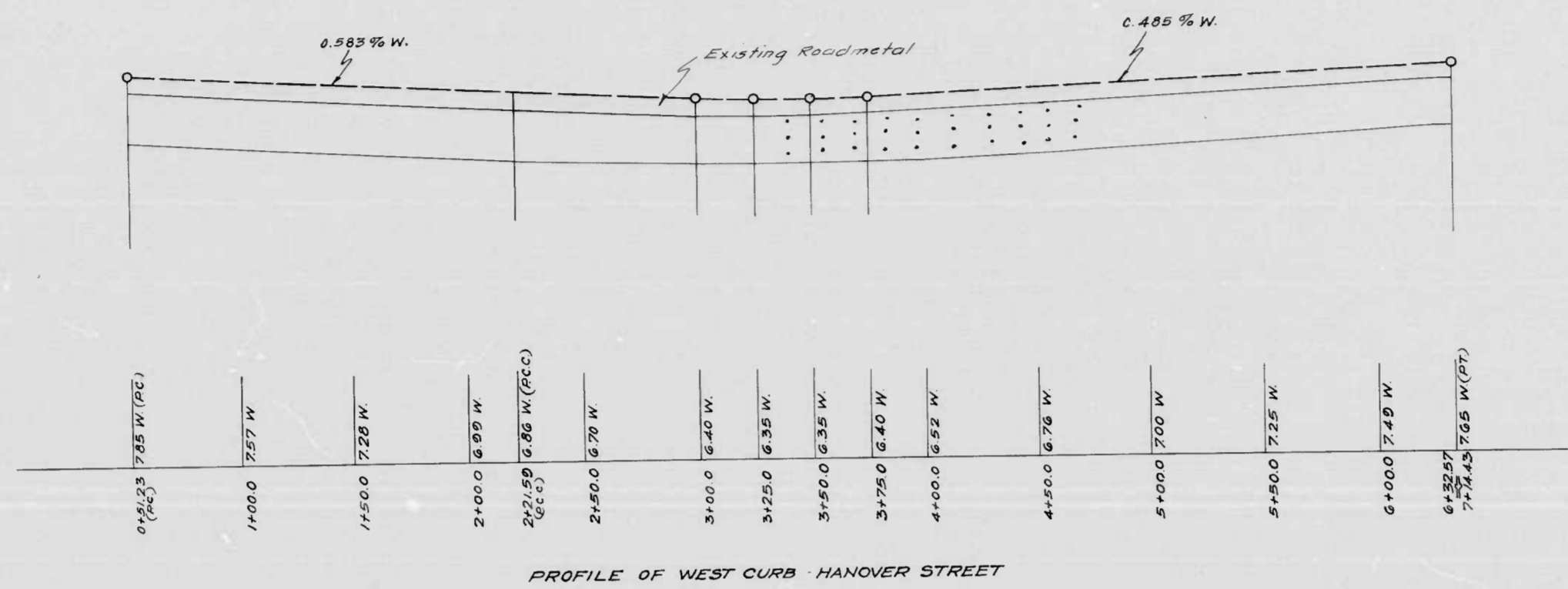
SCALE: PLAN 1 IN = 40 FT.  
PROFILE HOR 1 IN = 40 FT. VERT 1 IN = 4 FT.

REVISIONS	STATE OF MARYLAND STATE ROADS COMMISSION PLANS AND SURVEYS DEPARTMENT CHESAPEAKE AVE - HANOVER ST TO FOURTH ST CONT. NO. BC-166-766 F.A. PROJ. NO. DA-NI-5A SHEET NO. 4A OF 2 PREL. TRAC BY: FINAL TRAC BY: JJH
-----------	--

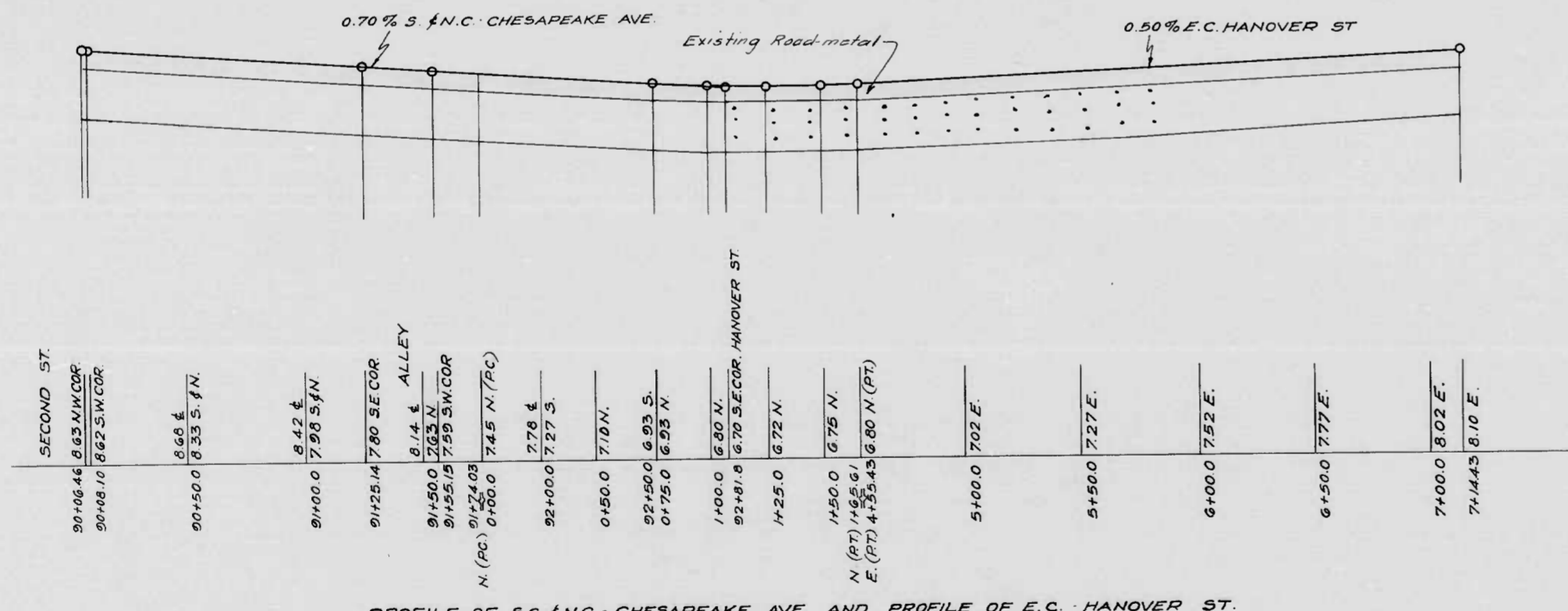
1179

MICROFILMED  
ON  
APERTURE CARDS

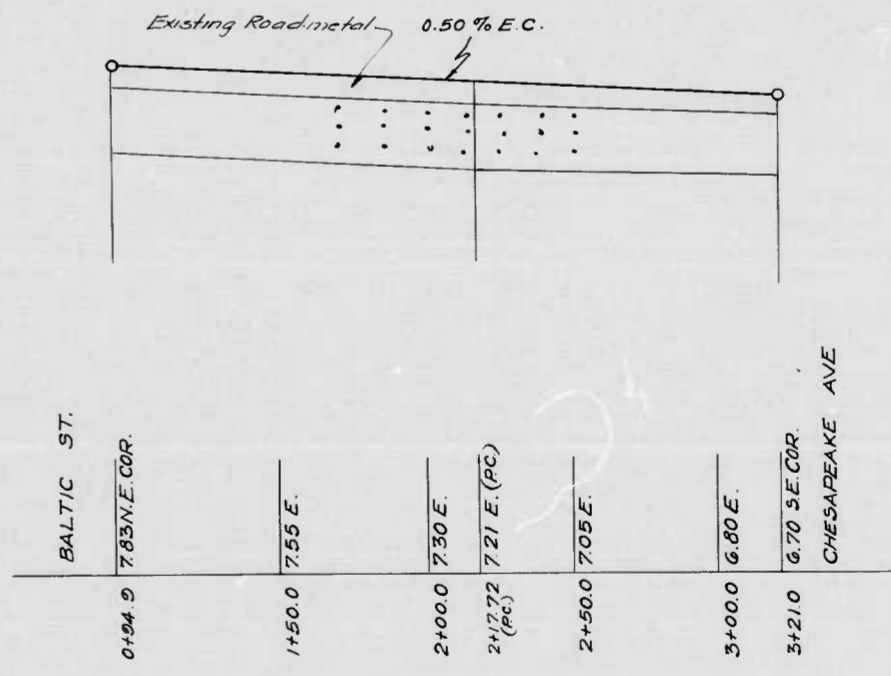
FED. ROAD DIST. NO.	STATE	FED. AID PROJ. NO.	SHEET NO.	TOTAL SHEETS
10	MD.	DA-NI-5A	5	12



PROFILE OF WEST CURB - HANOVER STREET



PROFILE OF S.C. & N.C. CHESAPEAKE AVE AND PROFILE OF E.C. HANOVER ST.



PROFILE OF E.C. HANOVER ST. - BALTIC ST. - CHESAPEAKE AVE.

REVISIONS

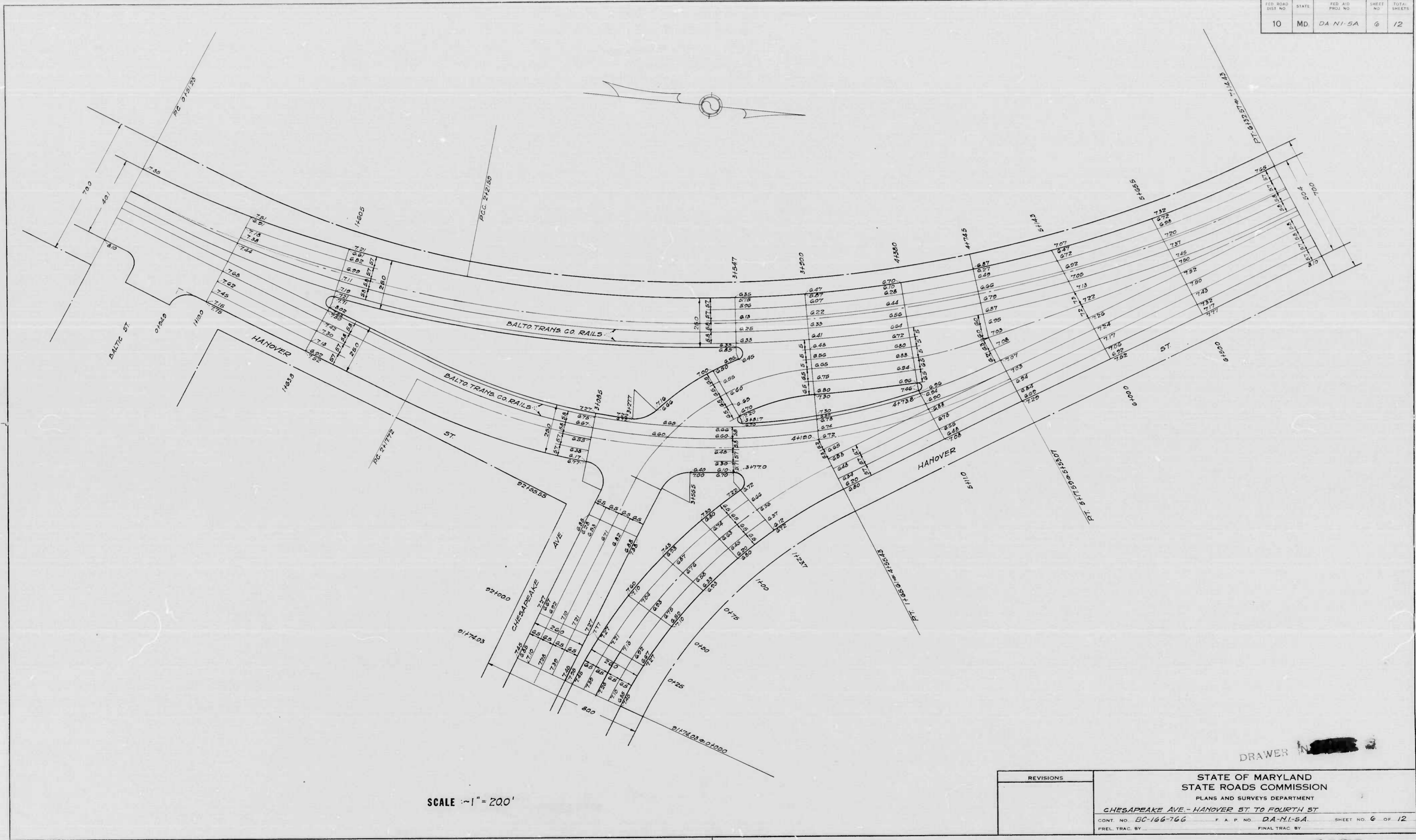
STATE OF MARYLAND  
STATE ROADS COMMISSION  
PLANS AND SURVEYS DEPARTMENT  
CHESAPEAKE AVE - HANOVER ST - FOURTH ST  
CONT. NO. BC-166-766 F. A. P. NO. DA-NI-5A SHEET NO. 5 OF 12  
PREL. TRAC. BY: FINAL TRAC. BY:

MICROFILMED ON APERTURE CARDS

SCALE PLAN: 1 IN. = 40 FT.  
PROFILE: HOR. 1 IN. = 40 FT., VERT. 1 IN. = 4 FT.

1173

FED. ROAD DIST. NO.	STATE	FED. AID PROJ. NO.	SHEET NO.	TOTAL SHEETS
10	MD	DA-NI-5A	6	12



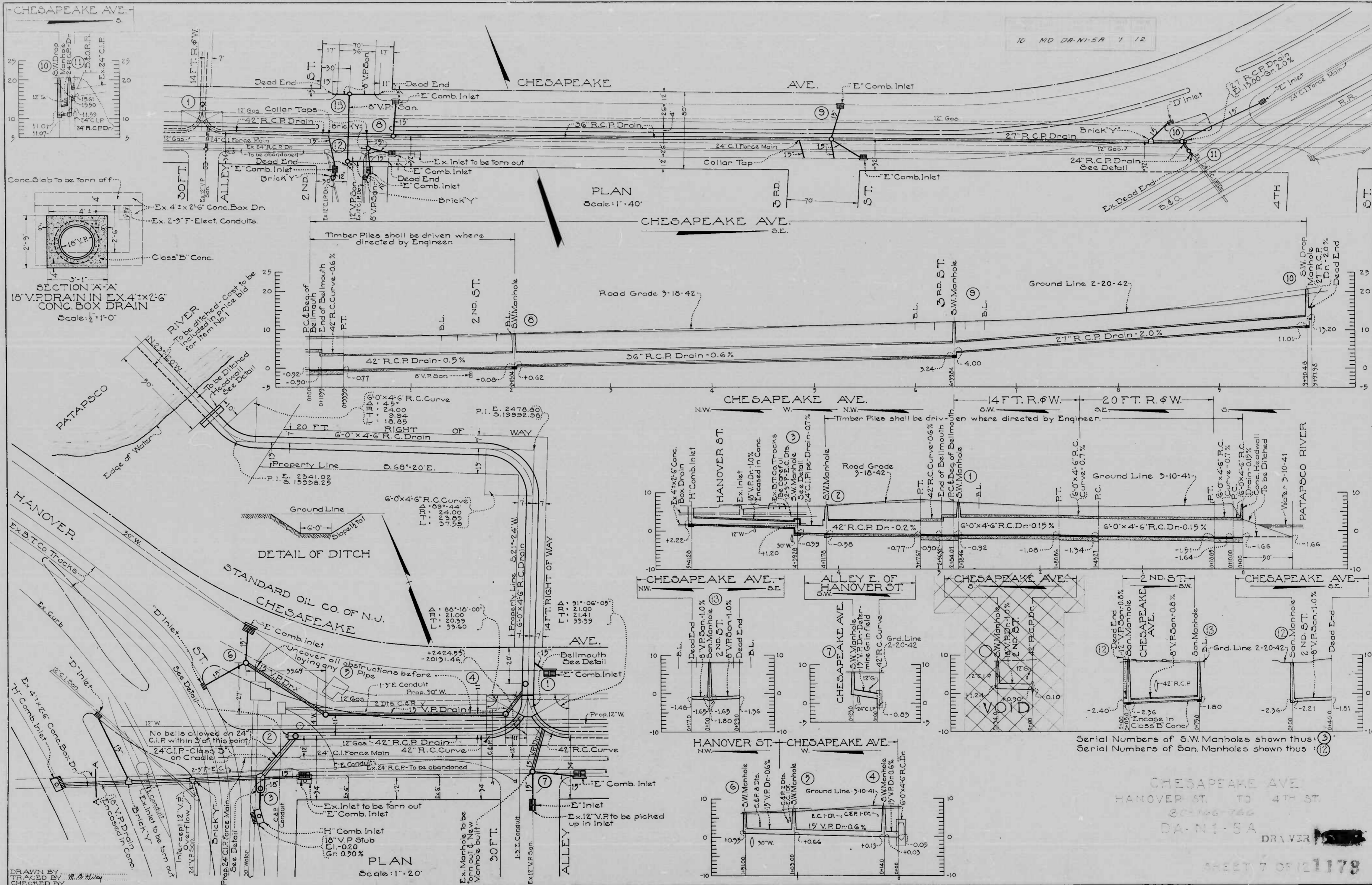
MICROFILMED ON APERTURE CARDS

SCALE 1" = 200'

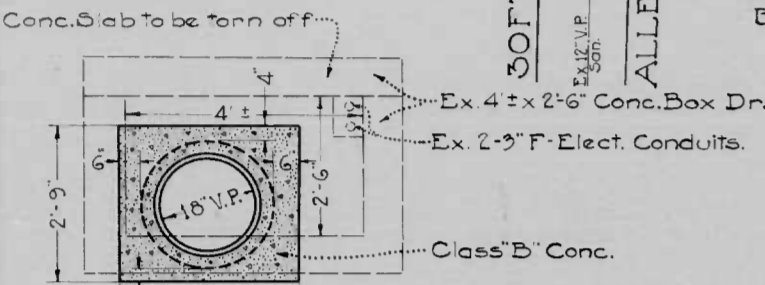
DRAWER [REDACTED]

REVISIONS	STATE OF MARYLAND STATE ROADS COMMISSION PLANS AND SURVEYS DEPARTMENT
	CHESAPEAKE AVE - HANOVER ST TO FOURTH ST
	CONT. NO. BC-166-766 F.A.P. NO. DA-NI-5A SHEET NO. 6 OF 12
	PREL. TRAC. BY: FINAL TRAC. BY:

1179



10 MD DA-N1-5A 7 12



Serial Numbers of S.W. Manholes shown thus: (3)  
Serial Numbers of San. Manholes shown thus: (2)

CHESAPEAKE AVE  
HANOVER ST. TO 4TH ST.  
303166-766  
DA-N1-5A

DRAWER [redacted]  
SHEET 7 OF 1178

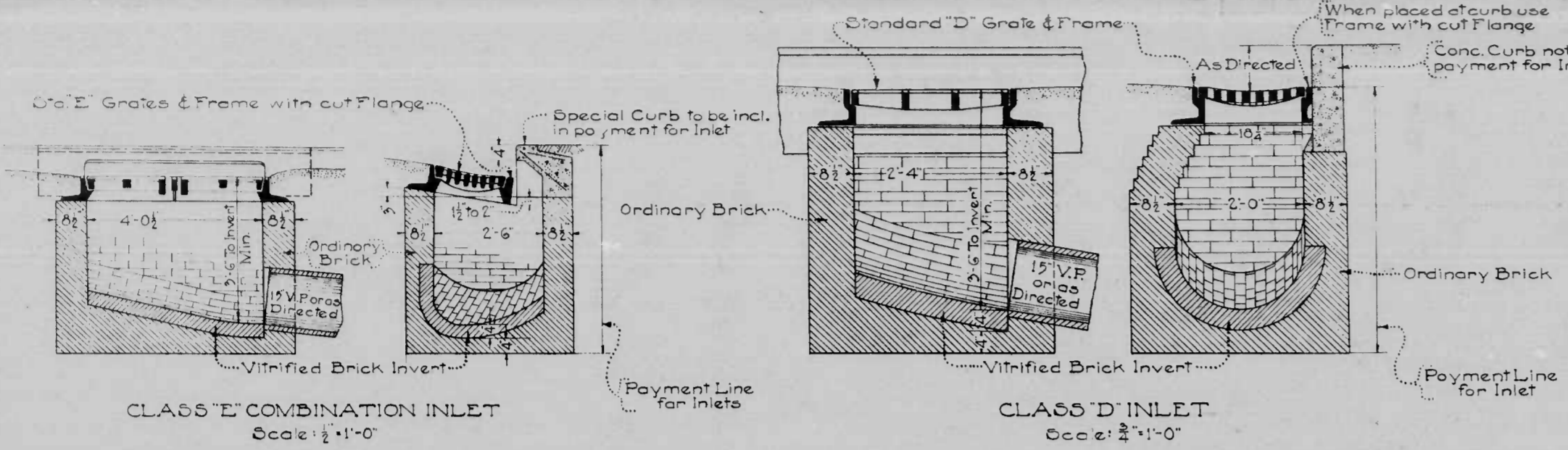
MICROFILMED  
APERTURE CARDS

DRAWN BY  
TRACED BY  
CHECKED BY



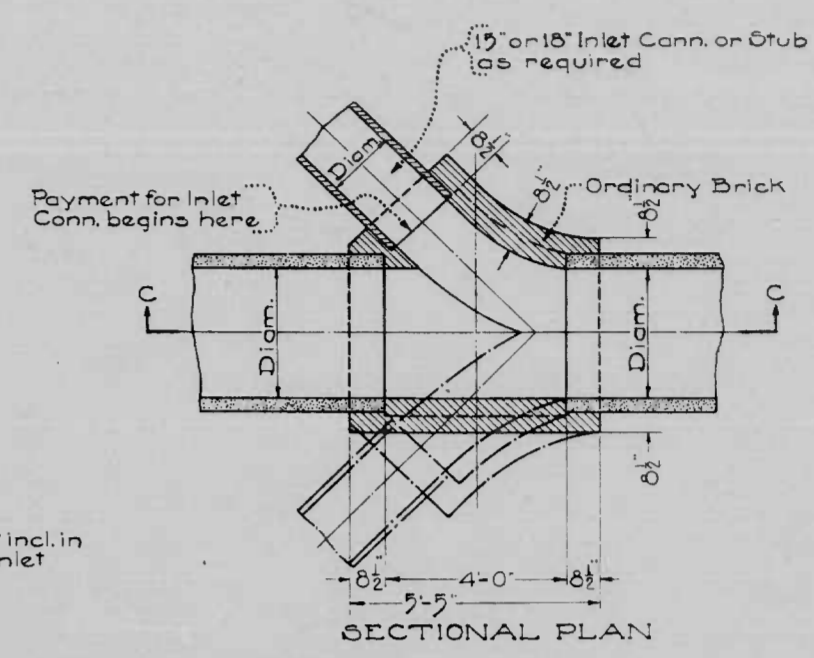
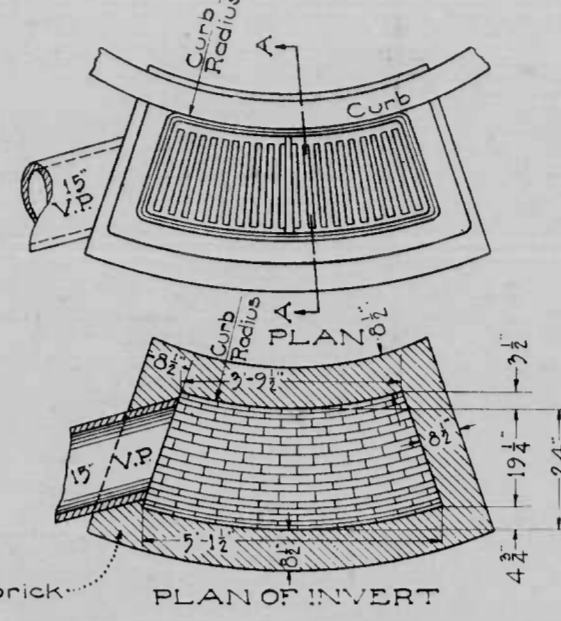
B.S.80-33493

10 MD DA N1-5A 0 12

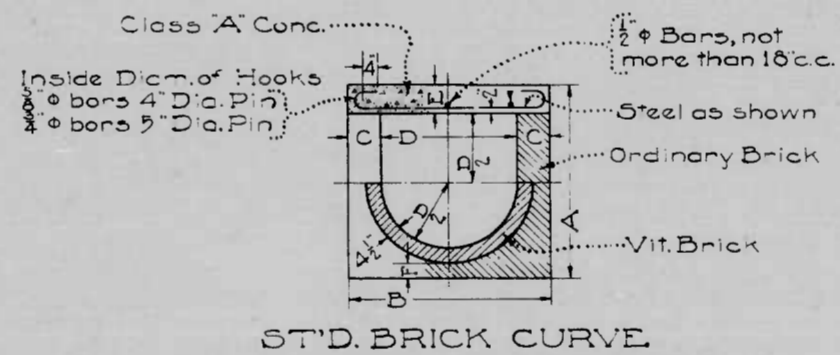
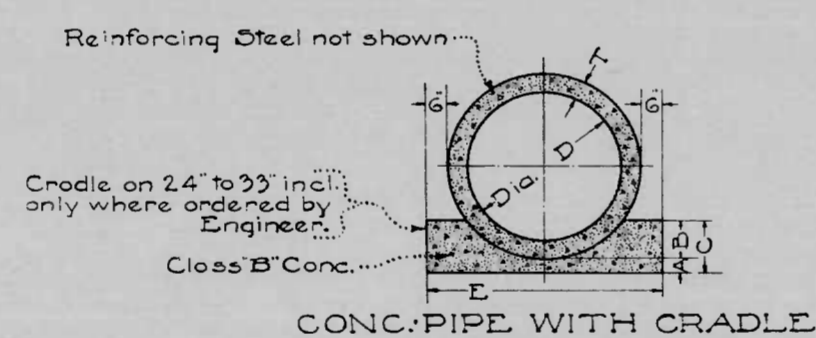
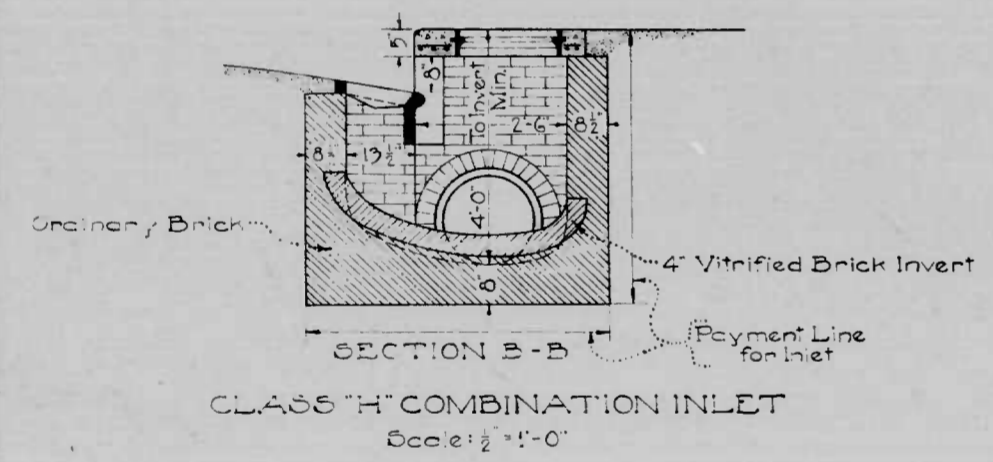
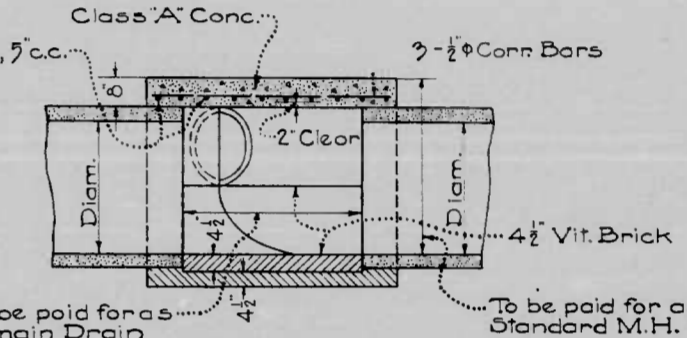
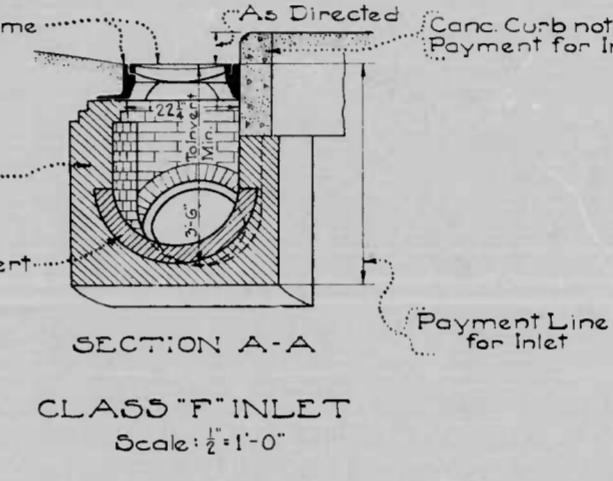
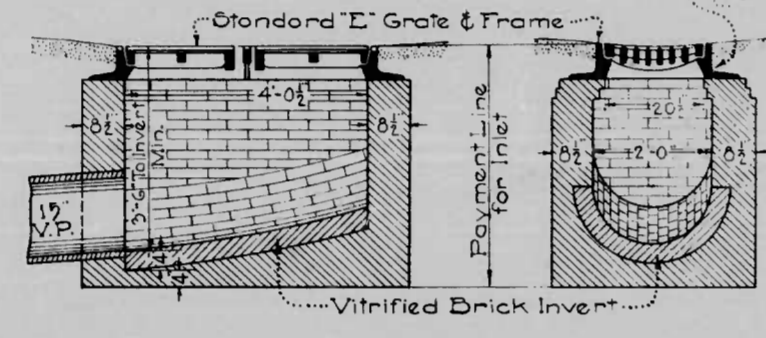
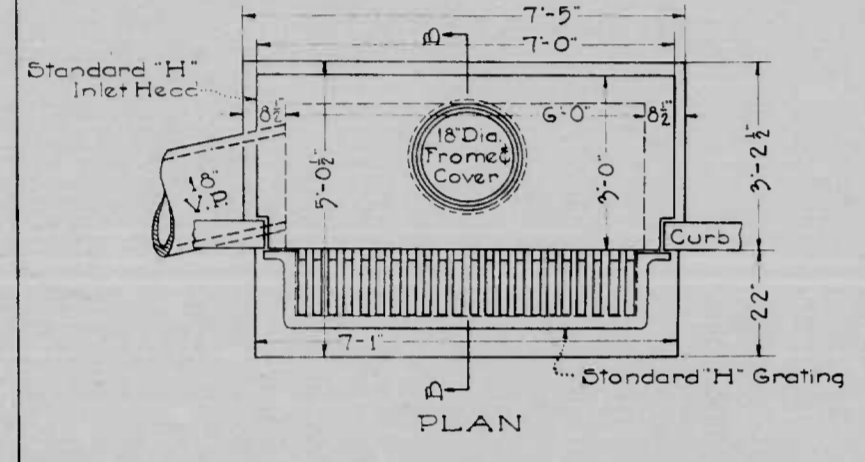


Note: Inverts to slope at least 2 per cent toward outlet

Note: Direction of Inlet Connections will vary to suit conditions

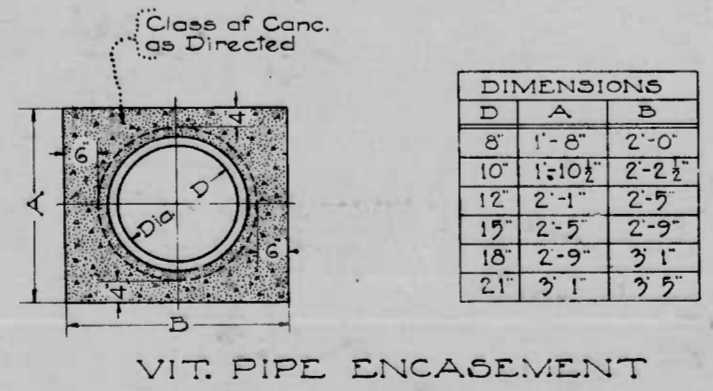
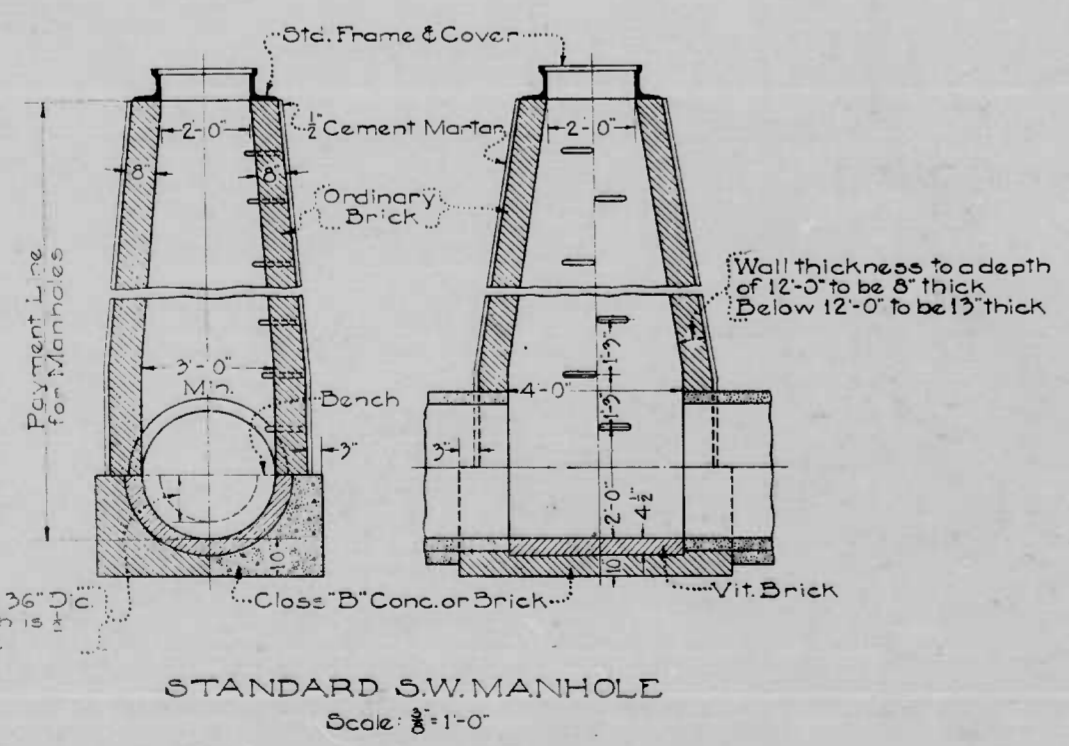


DOUBLE OR SINGLE BRICK "Y" FOR INLET CONNS.  
Scale: 3/8" = 1'-0"



DIMENSIONS					
D	A	B	C	E	T
inches	inches	inches	inches	inches	inches
24	3	6	9	3	3
27	3	7	10	3-10	3 1/2
30	4	7 1/2	11 1/2	4-1	3 1/2
33	4	8	12	4-7	4
36	4	9	13	4-8	4
42	4	10 1/2	14 1/2	5-3	4 1/2
48	4	12	16	5-10	5
54	4	13 1/2	17 1/2	6-5	5 1/2

DIMENSIONS						
D	A	B	C	E	F	Steel
24	3-5	3-6	9'	8'	4 1/2"	3/8" Conn. Bars 10' c.c.
27	3-6	3-9	9'	8'	4 1/2"	3/8" Conn. Bars 8' c.c.
30	3-11	4-0	9'	8'	4 1/2"	3/8" Conn. Bars 7' c.c.
33	4-2	4-3	9'	8'	4 1/2"	3/8" Conn. Bars 6' c.c.
36	4-5	4-6	9'	8'	4 1/2"	3/8" Conn. Bars 5' c.c.
42	5-2	5-8	13'	10'	6 1/2"	3/8" Conn. Bars 6' c.c.
48	5-9	6-2	13'	10'	6 1/2"	3/8" Conn. Bars 5' c.c.
54	6-7	6-8	13'	10'	6 1/2"	3/8" Conn. Bars 8' c.c.



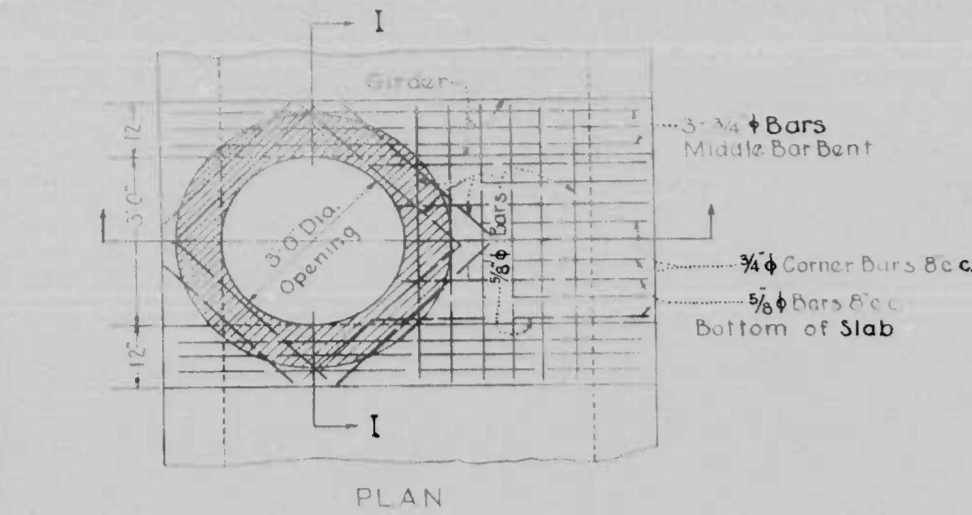
DIMENSIONS		
D	A	B
8	1'-8"	2'-0"
10	1'-10 1/2"	2'-2 1/2"
12	2'-1"	2'-5"
15	2'-5"	2'-9"
18	2'-9"	3'-1"
21	3'-1"	3'-5"

1173

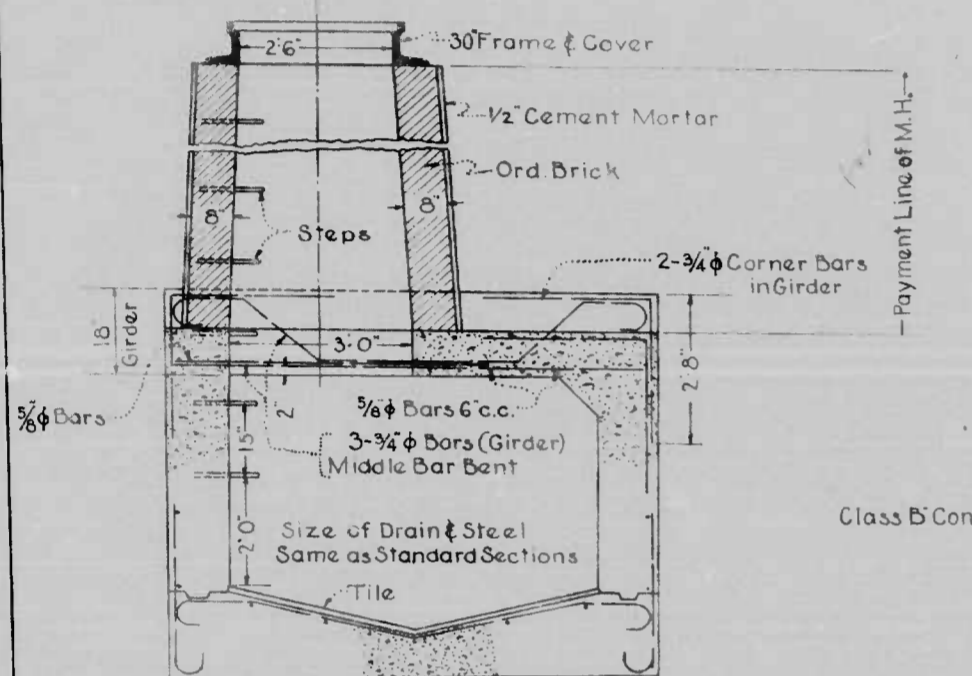
CHESAPEAKE AVE.  
HANOVER ST. TO 4TH ST  
BC-166-766  
DA-N1-5-A  
SHEET 8 OF 12

DRAWN BY  
TRACED BY  
CHECKED BY

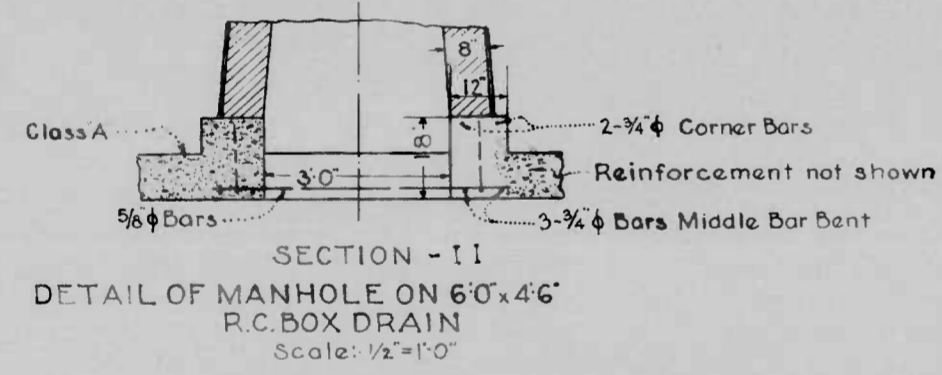
B.S.80-33493



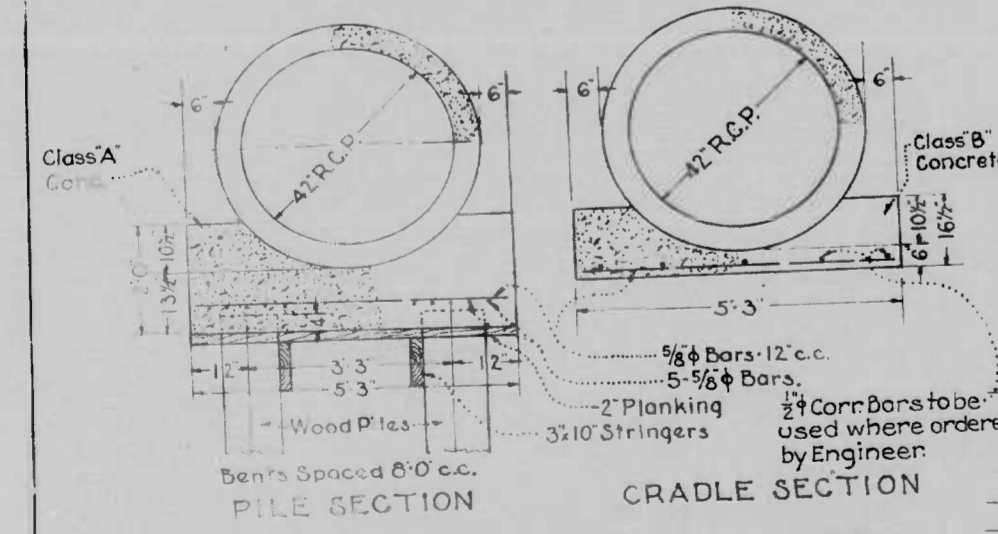
PLAN



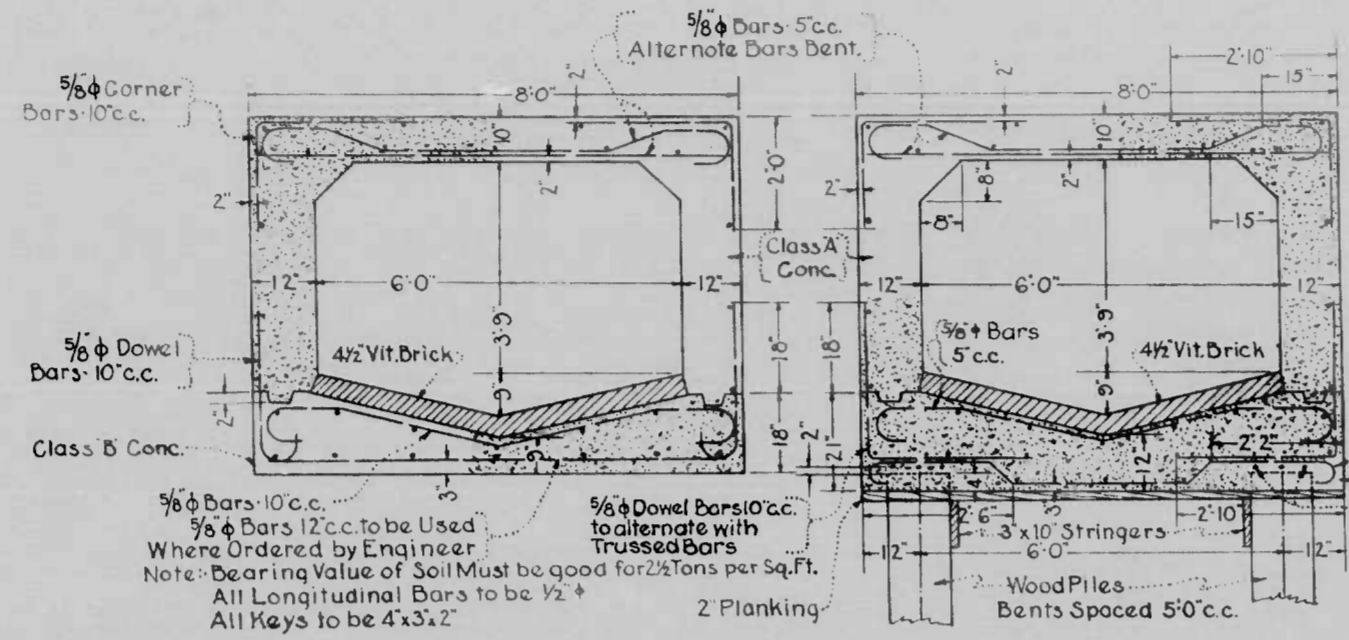
SECTION STA. 2+78.46



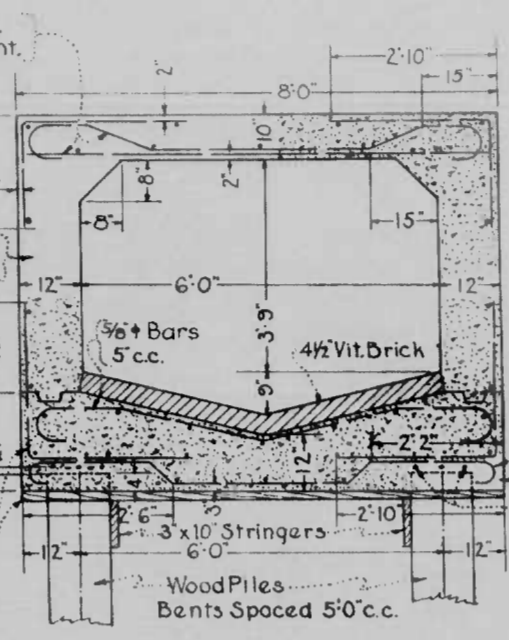
DETAIL OF MANHOLE ON 6'0\"/>



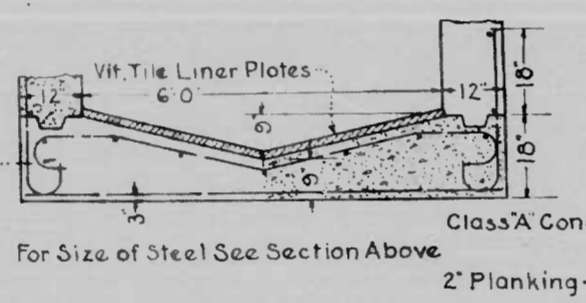
DETAIL OF BASES FOR 42\"/>



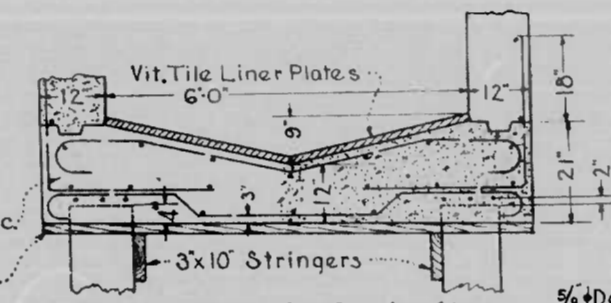
SECTION OF 60\"/>



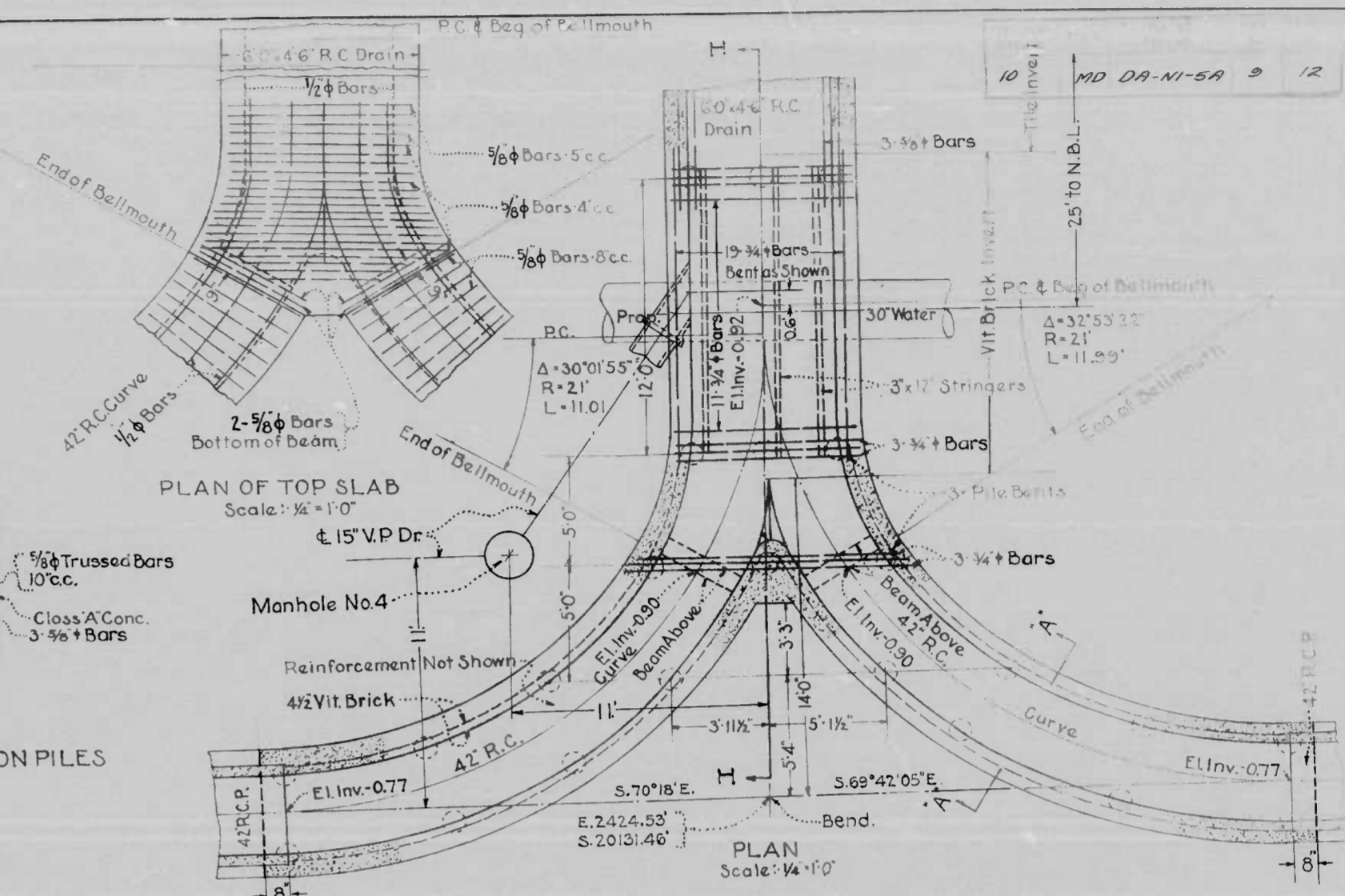
SECTION OF 60\"/>



SECTION OF 6'0\"/>

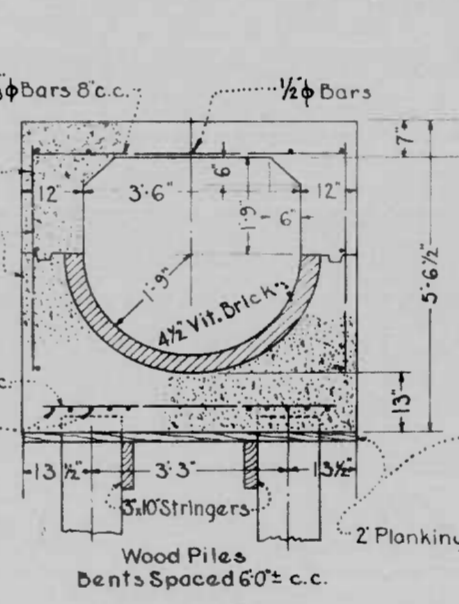


SECTION OF 6'0\"/>



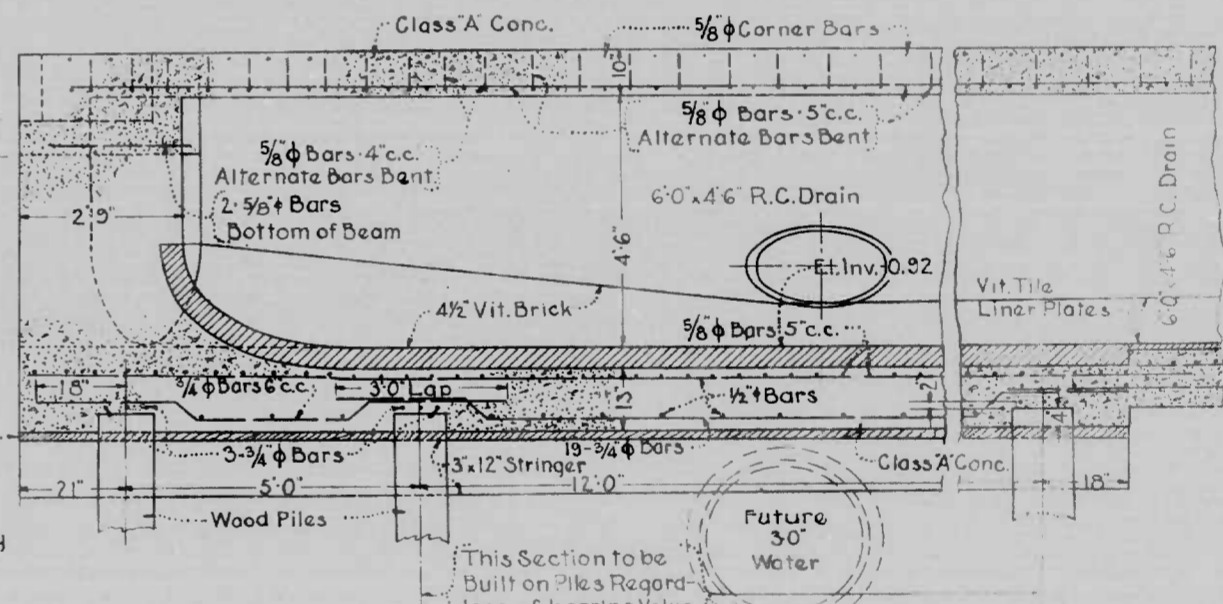
PLAN OF TOP SLAB

Scale: 1/4\"/>

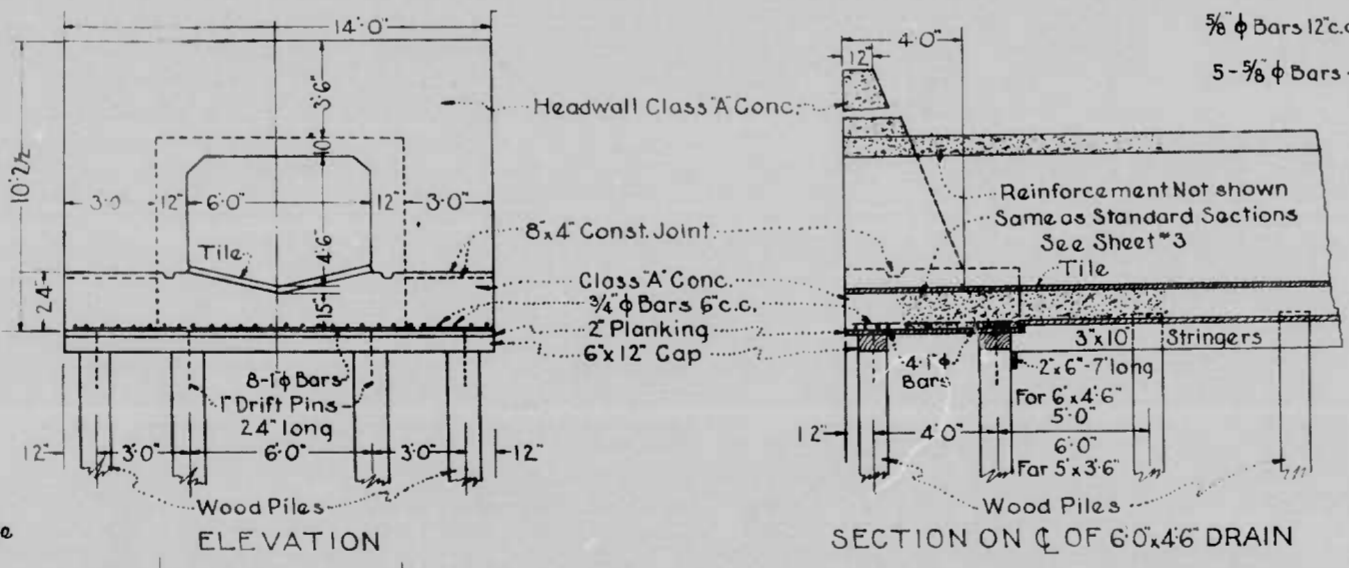


SECTION A-A

Scale: 1/2\"/>

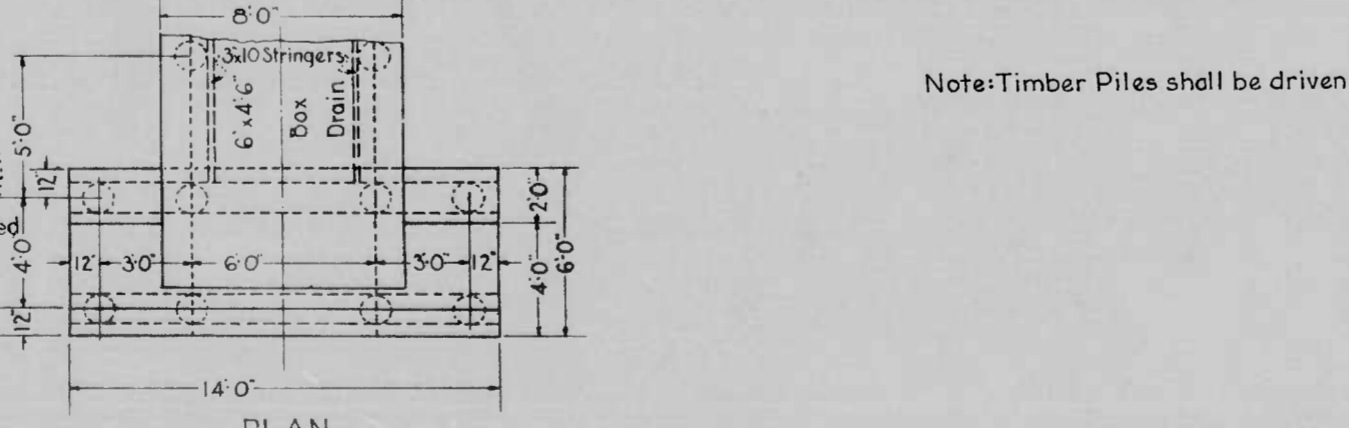


DETAIL OF BELLMOUTH AT CHESAPEAKE AVE. E. OF HANOVER ST.



ELEVATION

SECTION ON C/L OF 6'0\"/>



PLAN

DETAIL OF HEADWALL ON 6'0\"/>

Note: Timber Piles shall be driven where directed by Engineer.

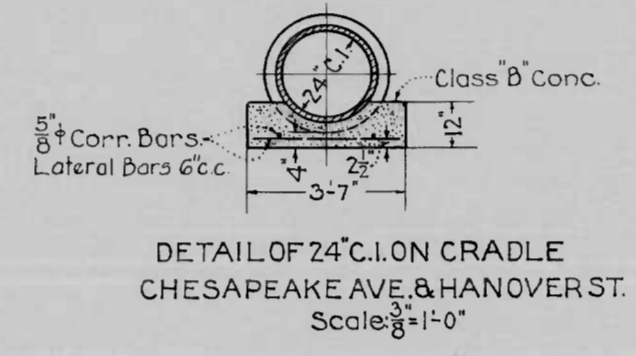
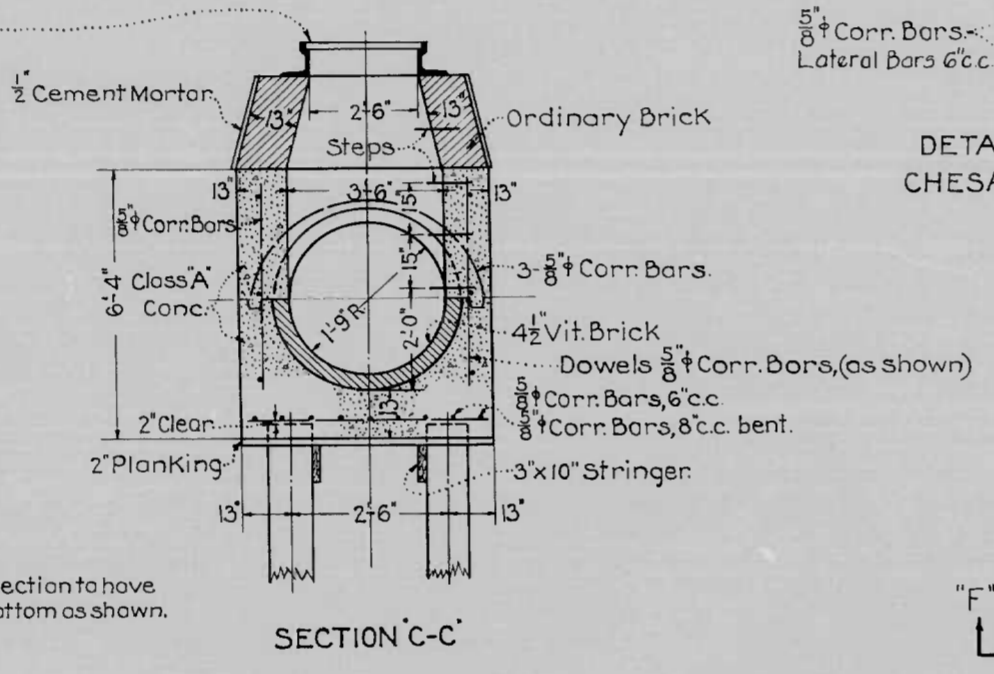
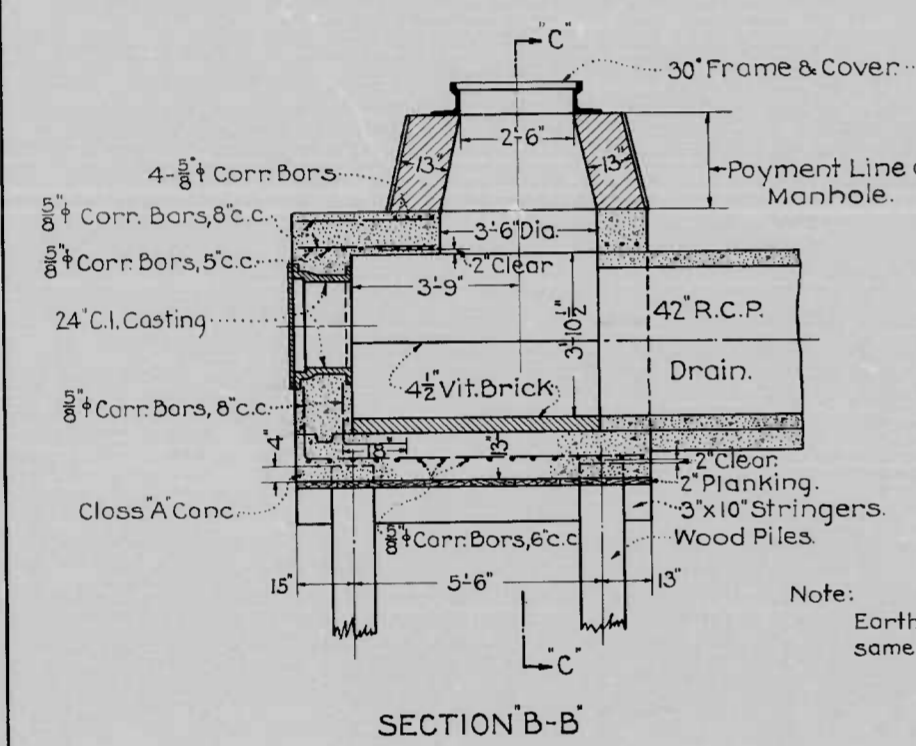
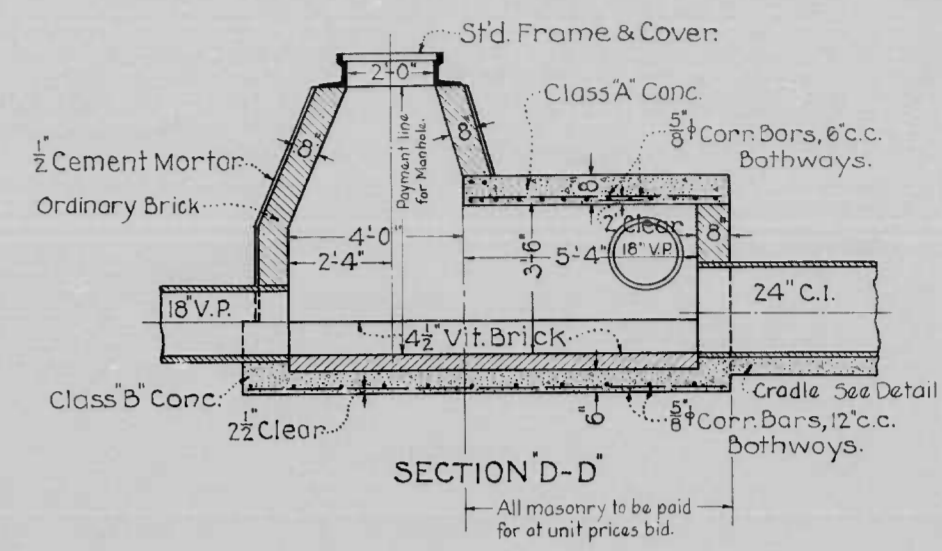
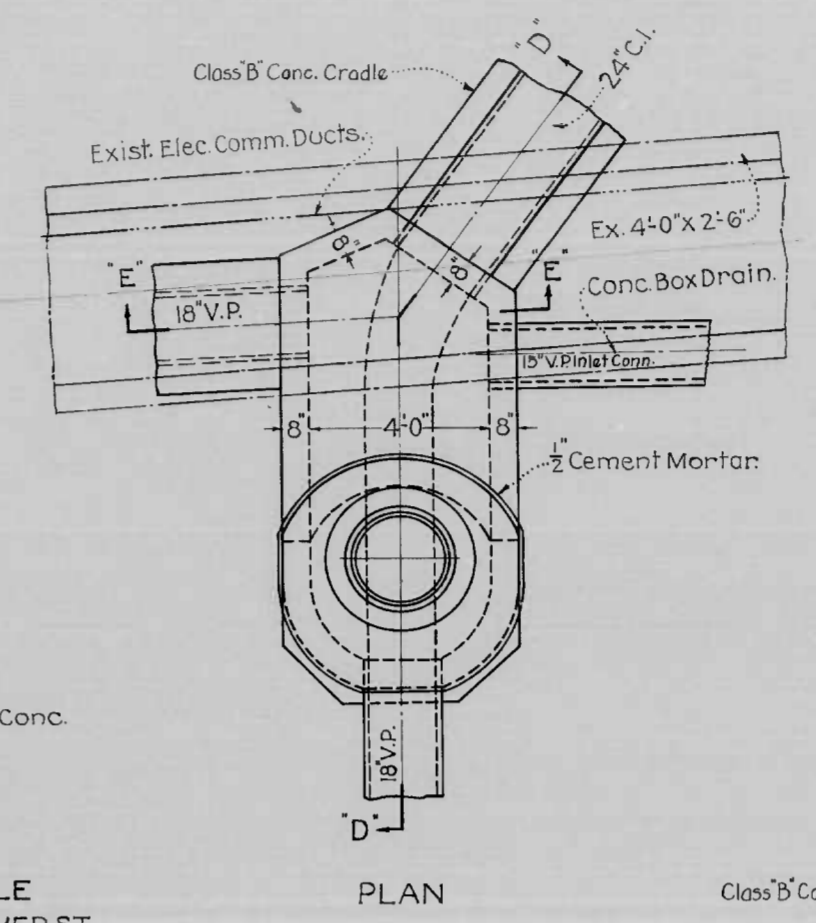
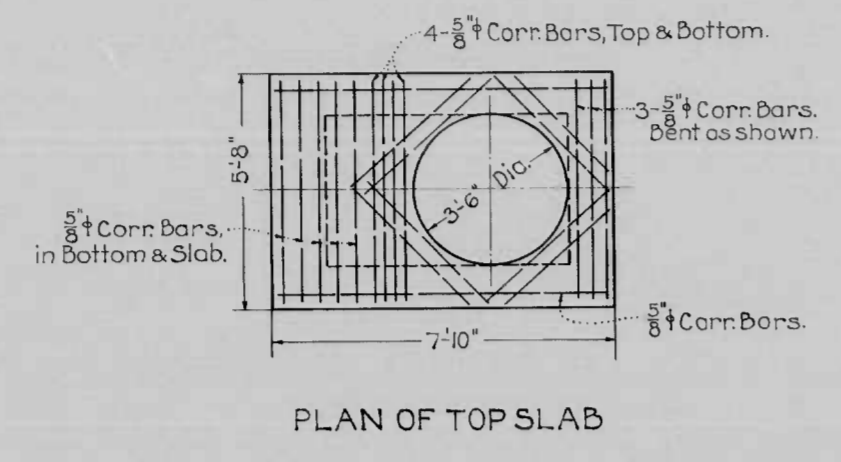
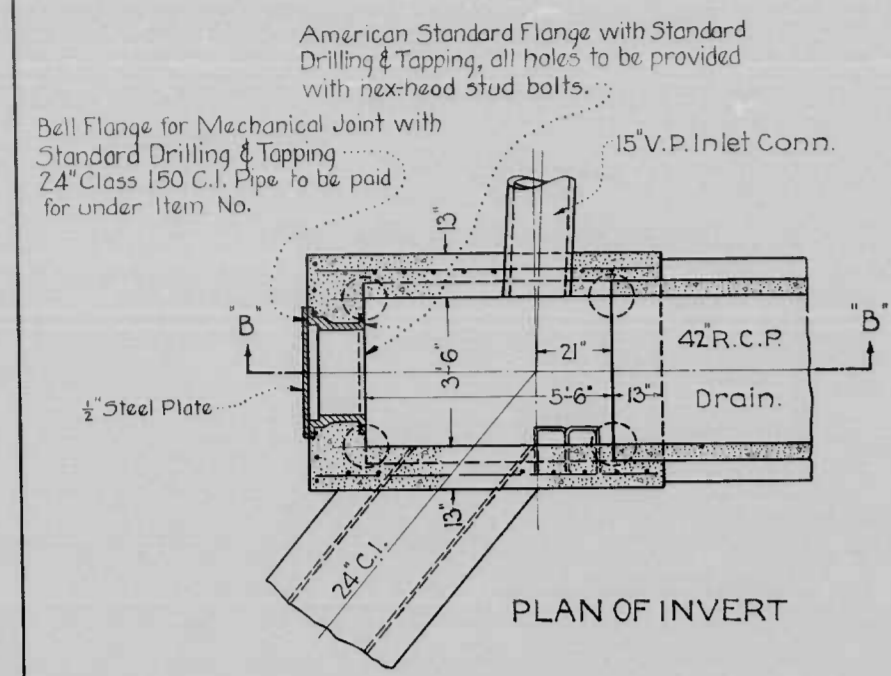
MICROFILMED  
ASBESTOS CARDS

CHESAPEAKE AVE  
HANOVER ST TO 4TH ST  
BC-100-760  
DA-N1-5A

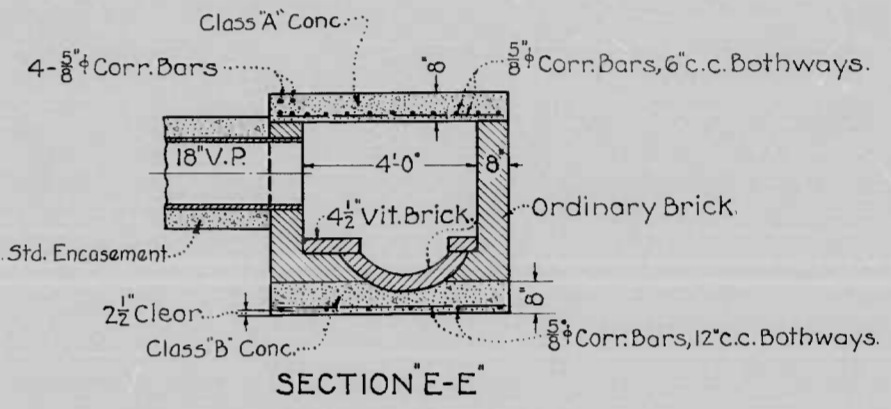
DRAWN: [Signature]  
SHEET 9 OF 12

B.S. 80-33533

10 MD OR NI-5A 10 12

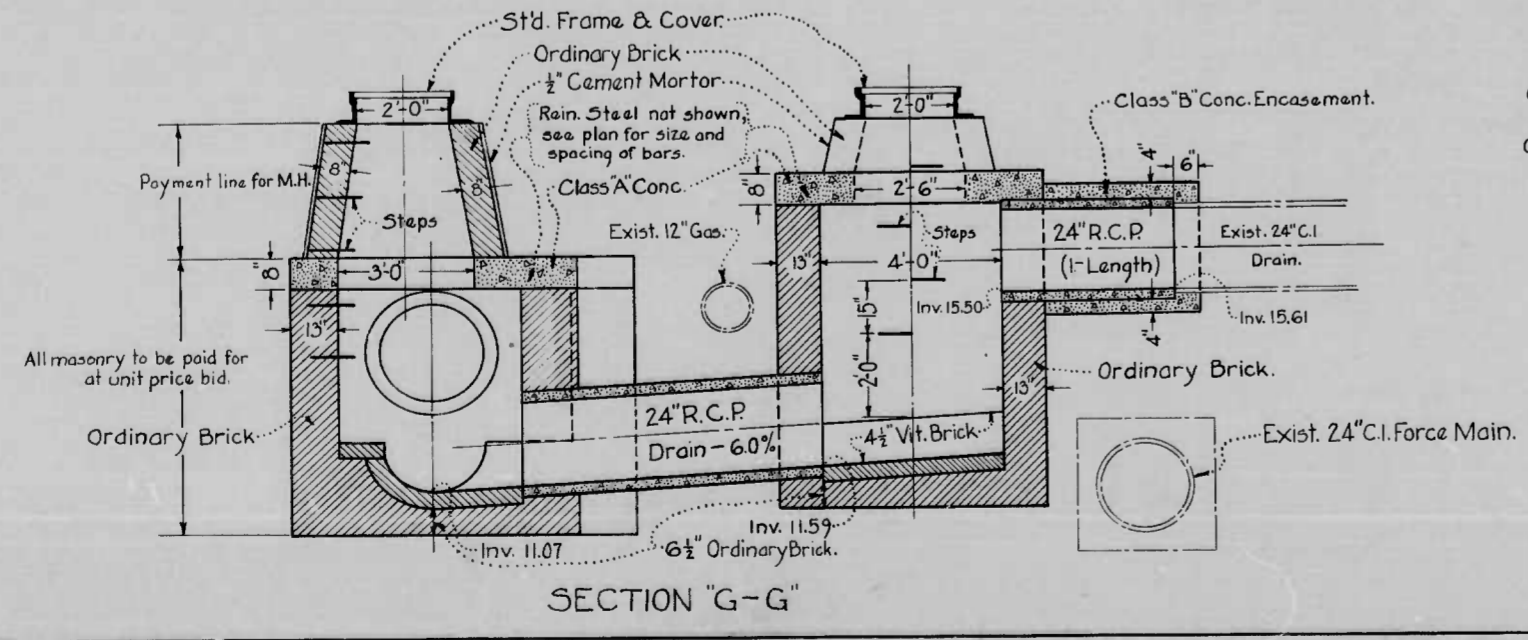
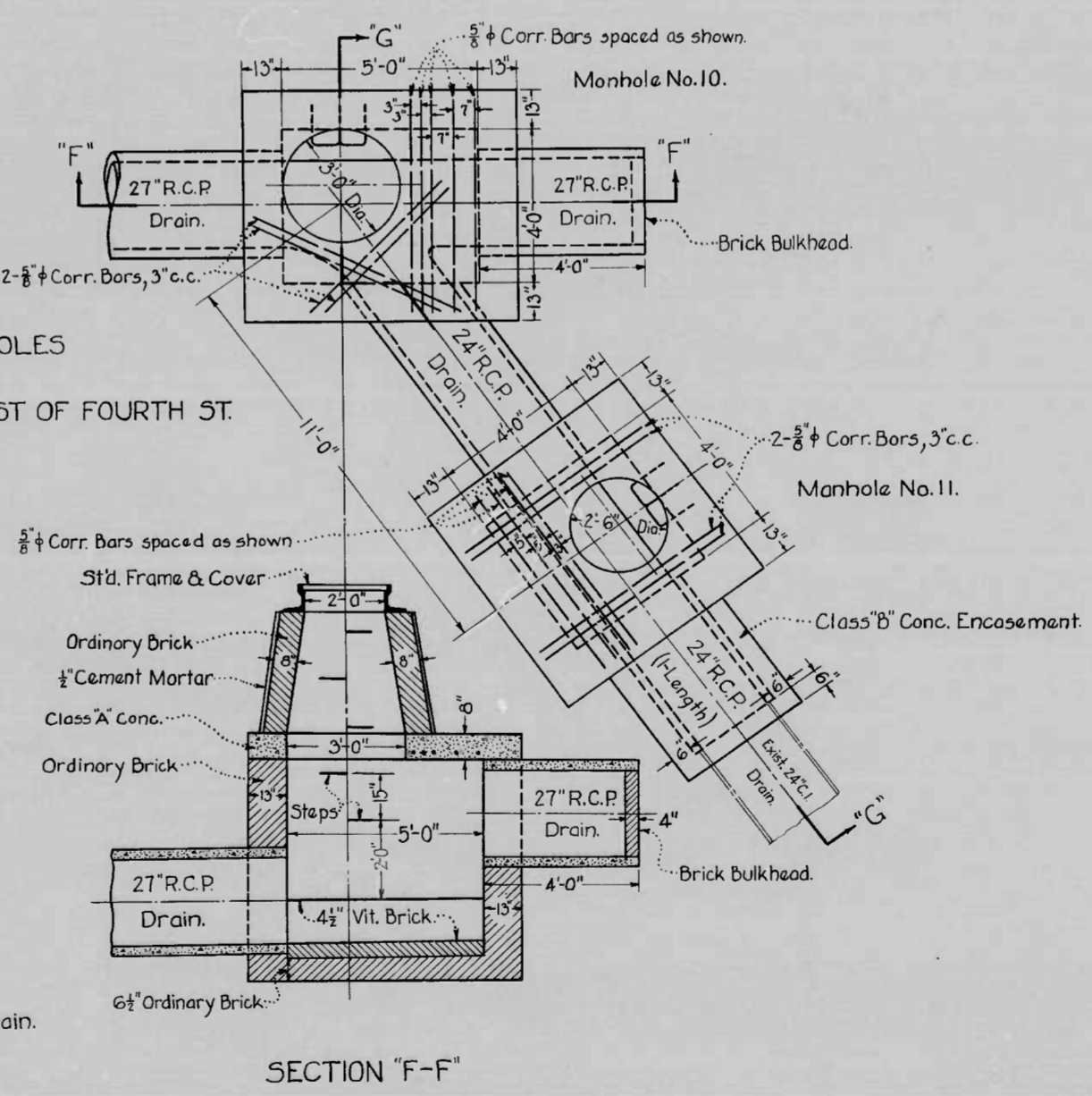


DETAIL OF MANHOLE NO. 3 CHESAPEAKE AVE. & HANOVER ST. Scale: 3/8" = 1'-0"



DETAIL OF MANHOLE NO. 2 CHESAPEAKE AVE. & HANOVER ST. Scale: 3/8" = 1'-0"

DETAIL OF MANHOLES NO. 10 & 11 CHESAPEAKE AVE. WEST OF FOURTH ST. Scale: 3/8" = 1'-0"



1178  
CHESAPEAKE AVE  
HANOVER ST. TO 4TH ST.  
BC-103-766  
DA-NI-5A  
SHEET 10 OF 12

MICROFILMED ON APERTURE CARDS



