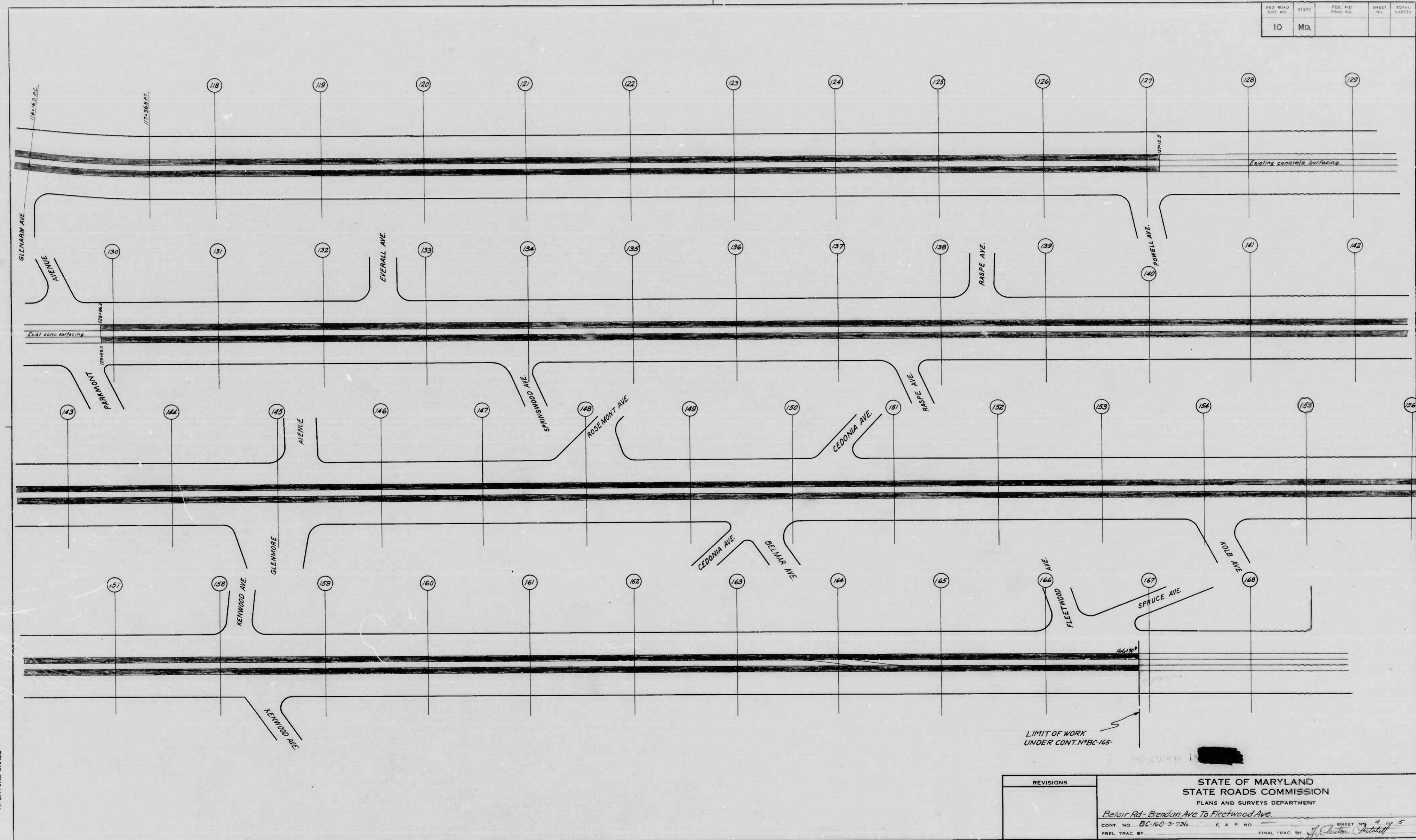


FED. ROAD DIST. NO.	STATE	FED. AID PROJ. NO.	SHEET NO.	TOTAL SHEETS
10	MD.			



MICROFILMED ON APERTURE CARDS

REVISIONS

STATE OF MARYLAND
 STATE ROADS COMMISSION
 PLANS AND SURVEYS DEPARTMENT

Belair Rd - Brandon Ave To Fleetwood Ave.

CONT. NO. DC-160-3-726 E. A. P. NO. SHEET NO. 2 of 5

PREL. TRAC. BY: FINAL TRAC. BY: *J. Weston [Signature]*

1172

INDEX OF SHEETS

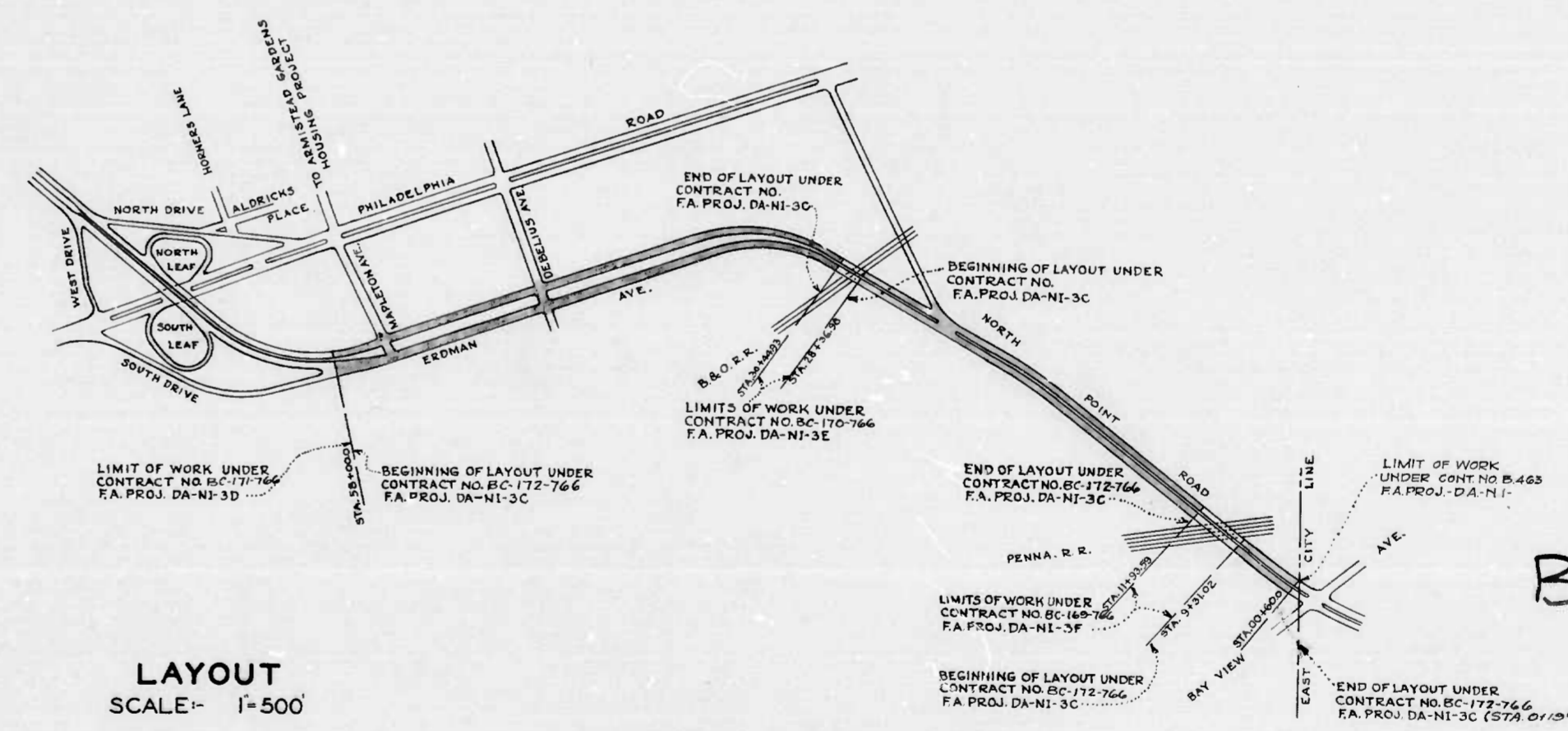
SHEET NO.	TITLE PAGE & LAYOUT
2	TYPICAL CROSS SECTIONS OF IMPROVEMENT
3	" " " " " "
4	PLAN STA. 58+00—STA. 48+00
5	PROFILE " " " " " "
6	PLAN & PROFILE " 48+00 " 38+00
7	" " " 38+00 " 28+00
8	" " " 28+00 " 16+00
9	" " " 16+00 " 4+24.51
10	" " " 4+24.51 " 0+60.00
11	" " STORM WATER DRAIN—SEWER
12	" " " " " "
13	" " " " " "
14	" " " " " "
15	SPECIAL DETAILS " " " "
16	STANDARD " " " "
17	SUMMARY OF QUANTITIES—HIGHWAYS
18	" " " " SEWER

STATE OF MARYLAND
STATE ROADS COMMISSION

PLAN AND PROFILE OF PROPOSED
STATE HIGHWAY

FEDERAL AID PROJECT NO. DA-NI-3C
BALTIMORE CITY
ERDMAN AVE. & NORTH POINT RD.
350'± W OF MAPLETON AVE - E. CITY LINE

SCALE: PLAN 1" = 40 FT.
PROFILE: HOR. 1" = 40 FT. VERT. 1" = 4 FT.



BC-172-766

CONVENTIONAL SIGNS

STATE AND NATIONAL LINE	-----	CULVERTS	-----
COUNTY LINE	-----	RETAINING WALL	-----
CITY OR VILLAGE	-----	DROP INLET	-----
FENCE LINE	-----	TROLLEY POLE	-----
GUARD RAIL	-----	POWER POLE	-----
UNFENCED PROPERTY	-----	TELEPHONE OR TELEGRAPH POLE	-----
RIGHT OF WAY LINE	-----	MARSH	-----
TRAVELED WAY	-----	HEDGE	-----
RAILROADS	-----	GROUND ELEVATION	DATUM LINE
BASE OR SURVEY LINE	-----	GRADE ELEVATION	DATUM LINE

LAYOUT
SCALE: 1" = 500'

FOR DETAILS OF CULVERTS, ETC. SEE STANDARD SHEET.
STATE SPECIFICATIONS AND STANDARD PLANS ON FILE IN BUREAU OF PUBLIC ROADS.

DRAWER 1178

APPROVED *George Cobb*
CHIEF ENGINEER, CITY OF BALTIMORE

APPROVED *Wilson I. Ballou*
CHIEF ENGINEER, STATE ROADS COMMISSION 3/9/42

RECOMMENDED FOR APPROVAL

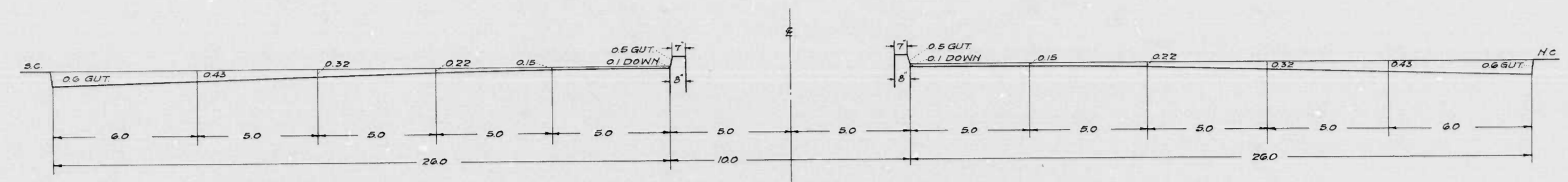
DISTRICT ENGINEER
PUBLIC ROADS ADMINISTRATION
FEDERAL WORKS AGENCY

APPROVED

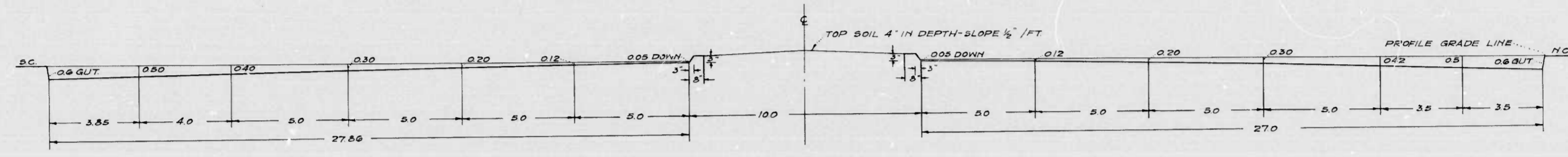
COMMISSIONER
PUBLIC ROADS ADMINISTRATION
FEDERAL WORKS AGENCY

MICROFILMED ON APERTURE CARDS

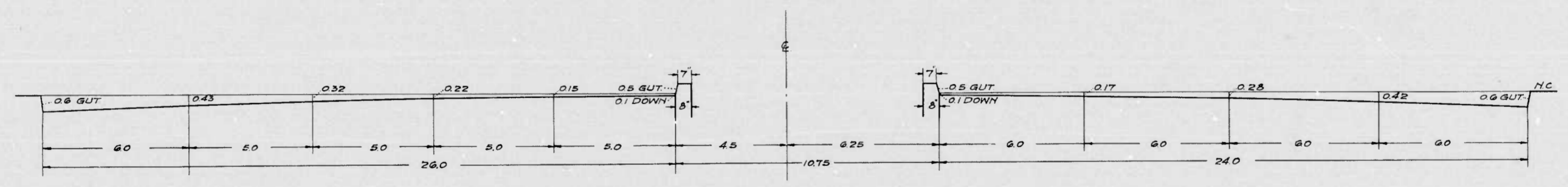
FED. ROAD DIST. NO.	STATE	FED. AID PROJ. NO.	SHEET NO.	TOTAL SHEETS
10	MD	DA-NI-3C	3	18



@ STA. 30+44.93 & 25+36.95



STA 25+00



@ STA. 11+93.59 & STA. 2131.02 TO STA 7+122

SCALE: $\frac{3}{8}'' = 1'-0''$

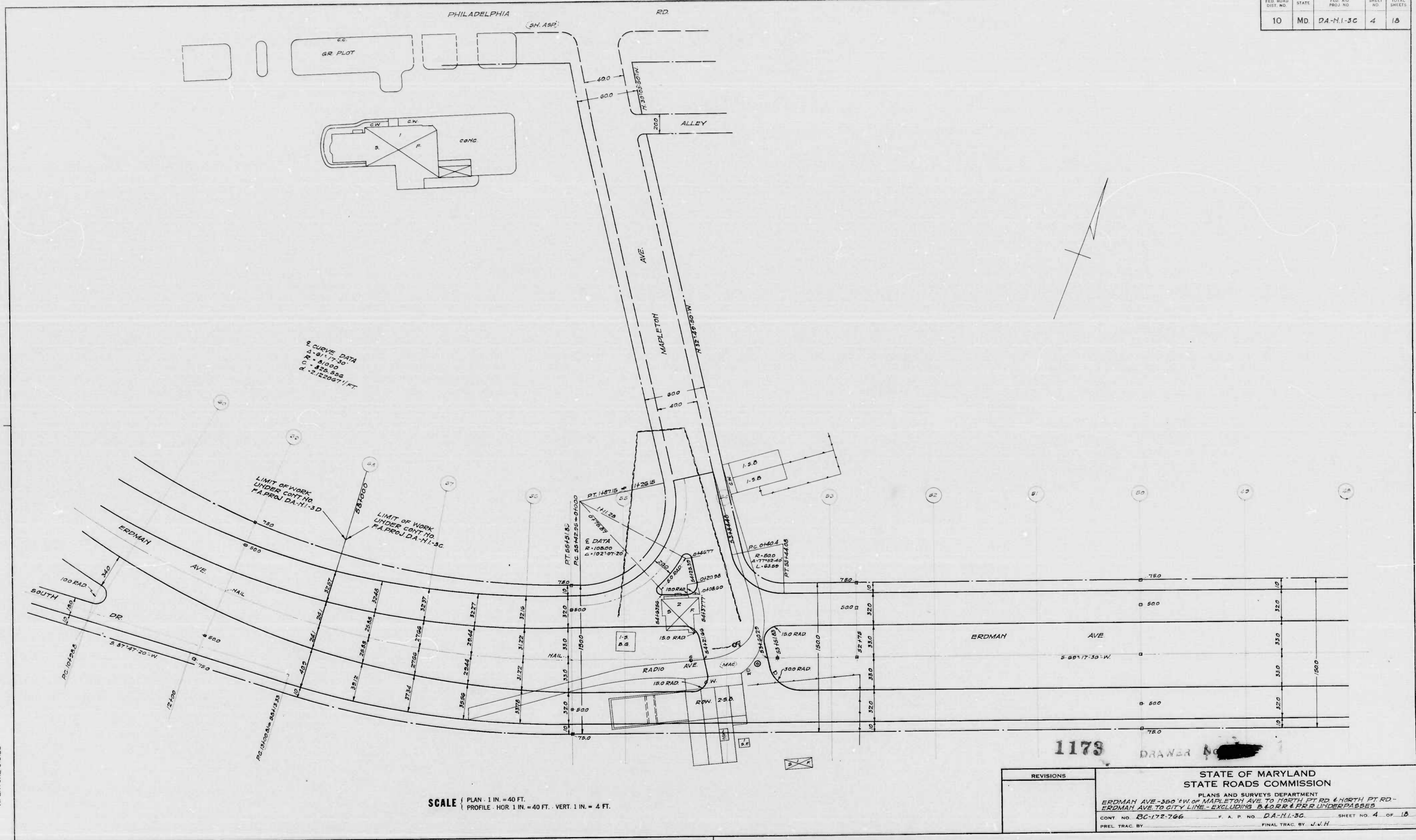
1178

DRAWER

REVISIONS	STATE OF MARYLAND STATE ROADS COMMISSION
	PLANS AND SURVEYS DEPARTMENT ERDMAN AVE - 300' W OF MAPLETON AVE TO NORTH PT RD. & NORTH PT RD - ERDMAN AVE TO CITY LINE - EXCLUDING THE 840 FEET & 200' TO UNDERPASS
	CONT. NO. BC-172-766 F. A. P. NO. DA-NI-3C SHEET NO. 3 OF 18
	PREL. TRAC. BY: J.V.H. FINAL TRAC. BY: J.V.H.

MICROFILMED ON APERTURE CARDS

FED. ROAD DIST. NO.	STATE	FED. AID PROJ. NO.	SHEET NO.	TOTAL SHEETS
10	MD	DA-NI-3C	4	18



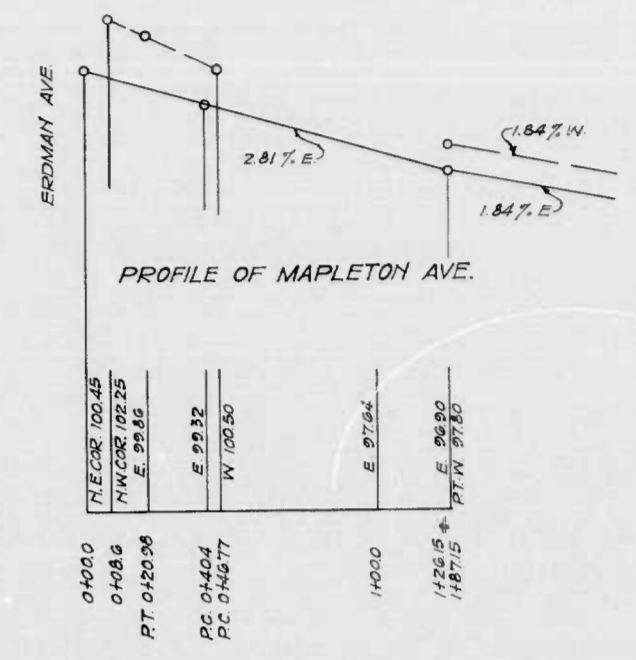
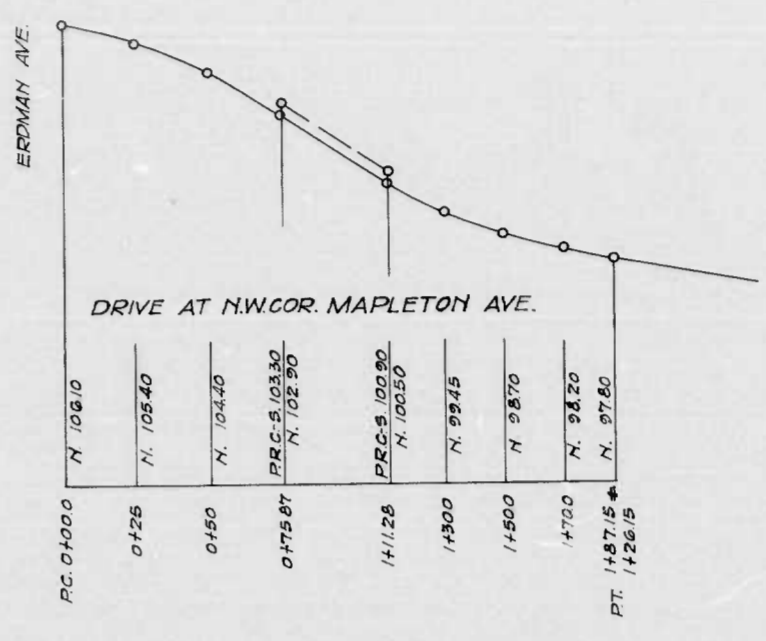
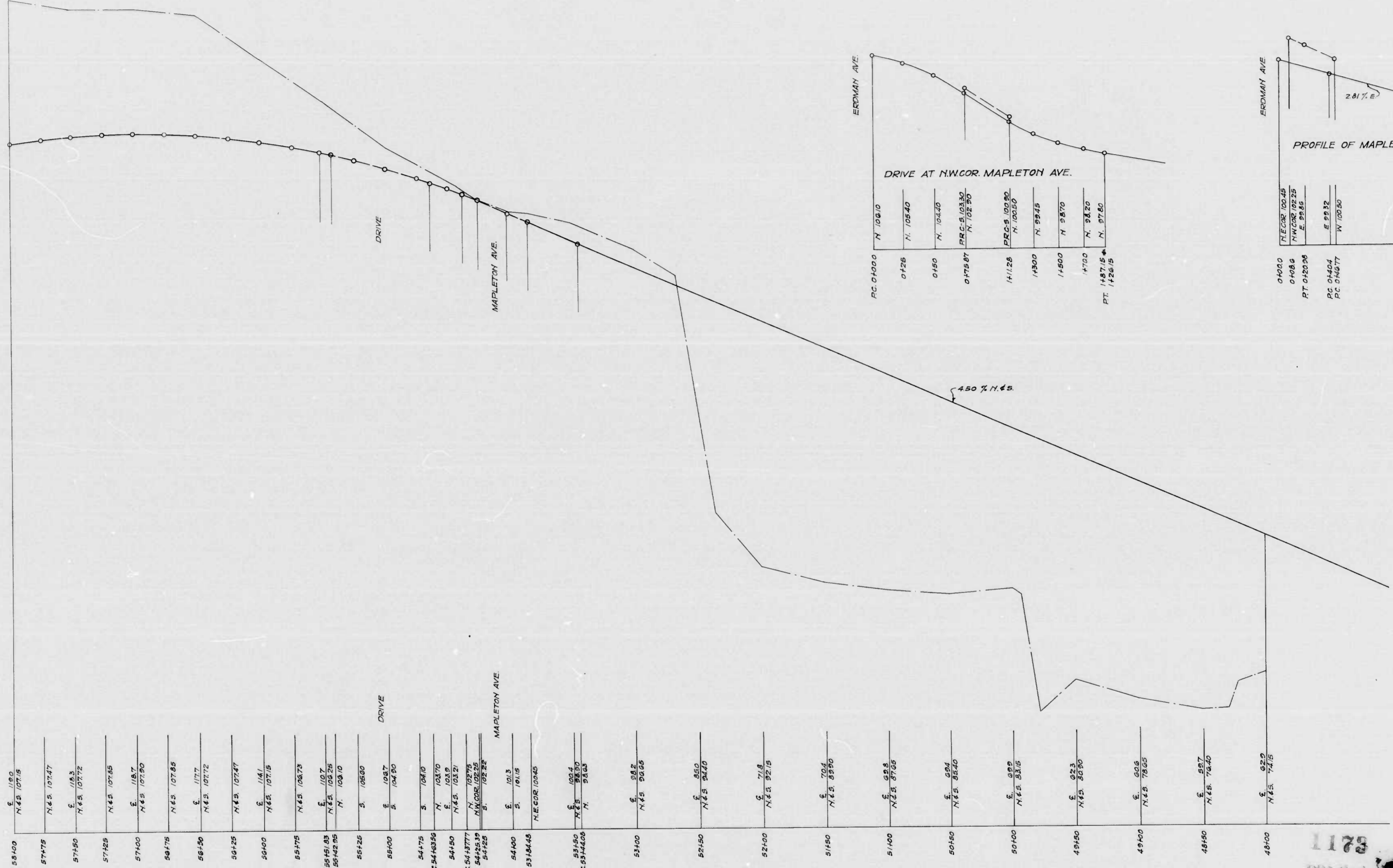
SCALE | PLAN - 1 IN. = 40 FT. | PROFILE - HOR 1 IN. = 40 FT. - VERT 1 IN. = 4 FT.

REVISIONS

STATE OF MARYLAND
STATE ROADS COMMISSION
PLANS AND SURVEYS DEPARTMENT
ERDMAN AVE - 350' W. OF MAPLETON AVE TO NORTH PT RD & NORTH PT RD -
ERDMAN AVE TO CITY LINE - EXCLUDING B & O RR & F.R.R. UNDERPASSES
CONT. NO. DC-172-766 F. A. P. NO. DA-NI-3C SHEET NO. 4 OF 18
PREL. TRAC. BY: FINAL TRAC. BY: J.W.H.

MICROFILMED ON APERTURE CARDS

FED. ROAD DIST. NO.	STATE	FED. AID PROJ. NO.	SHEET NO.	TOTAL SHEETS
10	MD.	DA-NI-3C	5	18



53+00	E. 118.0	N. 45. 107.15
57+75	N. 45. 195.47	
57+80	E. 118.3	N. 45. 107.12
57+85	N. 45. 107.85	
57+90	E. 118.7	N. 45. 107.80
58+75	N. 45. 107.85	
58+80	E. 117.7	N. 45. 107.72
58+85	N. 45. 107.47	
58+90	E. 114.1	N. 45. 107.15
58+95	N. 45. 106.73	
59+00	E. 107.7	N. 45. 107.15
59+05	N. 45. 106.70	
59+10	S. 105.00	
59+15	S. 104.80	
59+20	S. 104.70	
59+25	N. 103.70	
59+30	E. 103.9	
59+35	N. 45. 103.21	
59+40	N. 45. 102.25	
59+45	S. 102.22	
59+50	E. 101.3	
59+55	S. 101.8	
59+60	N.E. COR. 105.65	
59+65	E. 100.1	
59+70	N. 98.30	
59+75	N. 98.03	
59+80	E. 98.2	
59+85	N. 45. 98.65	
59+90	S. 98.5	
59+95	N. 45. 98.00	
60+00	S. 71.8	N. 45. 92.15
60+05	E. 70.6	
60+10	N. 45. 89.90	
60+15	E. 69.8	
60+20	N. 45. 87.65	
60+25	E. 67.4	
60+30	N. 45. 85.40	
60+35	E. 66.7	
60+40	N. 45. 83.15	
60+45	S. 65.3	
60+50	N. 45. 80.90	
60+55	E. 60.8	
60+60	N. 45. 78.65	
60+65	E. 58.7	
60+70	N. 45. 76.40	
60+75	E. 57.0	
60+80	N. 45. 74.15	

SCALE | PLAN - 1 IN. = 40 FT.
 PROFILE - HOR. 1 IN. = 40 FT. VERT. 1 IN. = 4 FT.

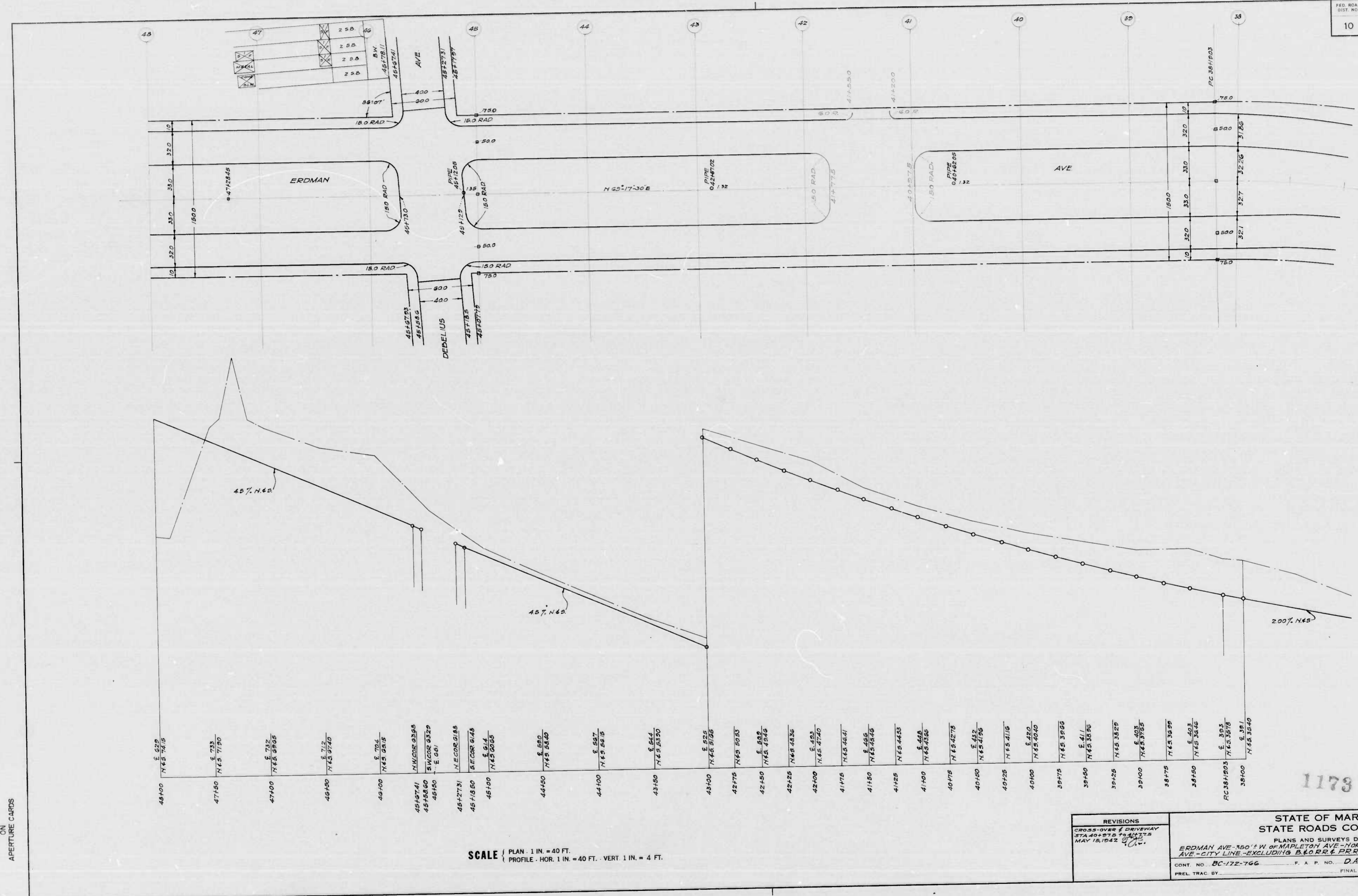
REVISIONS

STATE OF MARYLAND
 STATE ROADS COMMISSION
 PLANS AND SURVEYS DEPARTMENT
 ERDMAN AVE - 350' W. OF MAPLETON AVE NORTH PT RD & NORTH PT RD
 ERDMAN AVE TO CITY LINE EXCLUDING 400' I.P.R.R. UNDERPASSES
 CONT. NO. BC-175-766 F. A. P. NO. DA-NI-3C SHEET NO. 5 OF 18
 PREL. TRAC. BY: J.J.H. FINAL TRAC. BY: J.J.H.

MICROFILMED
 APERTURE CARDS

1173

FED. ROAD DIST. NO.	STATE	FED. AID PROJ. NO.	SHEET NO.	TOTAL SHEETS
10	MD.	DA-NI-3C	6	18



48+00	E 629 N 45 74.5
47+80	E 793 N 45 71.50
47+00	E 732 N 45 69.65
46+80	E 717 N 45 67.40
46+00	E 704 N 45 65.15
45+741	N 45 63.90
45+560	N 45 62.65
45+150	E 661 N 45 61.40
44+400	E 650 N 45 58.60
44+100	E 587 N 45 54.9
43+80	E 564 N 45 53.0
43+00	E 526 N 45 51.25
42+775	N 45 50.53
42+580	E 502 N 45 49.15
42+225	N 45 47.35
42+000	E 482 N 45 47.40
41+715	N 45 46.41
41+580	E 465 N 45 45.45
41+25	N 45 44.43
41+000	E 448 N 45 43.66
40+715	N 45 42.78
40+600	E 412 N 45 41.95
40+225	N 45 41.16
40+000	E 420 N 45 40.40
39+715	N 45 39.66
39+500	E 411 N 45 38.96
39+225	N 45 38.29
39+000	E 403 N 45 37.65
38+715	N 45 36.99
38+500	E 402 N 45 36.44
38+150	E 385 N 45 35.78
38+000	E 381 N 45 35.40

SCALE | PLAN - 1 IN. = 40 FT.
| PROFILE - HOR. 1 IN. = 40 FT. - VERT. 1 IN. = 4 FT.

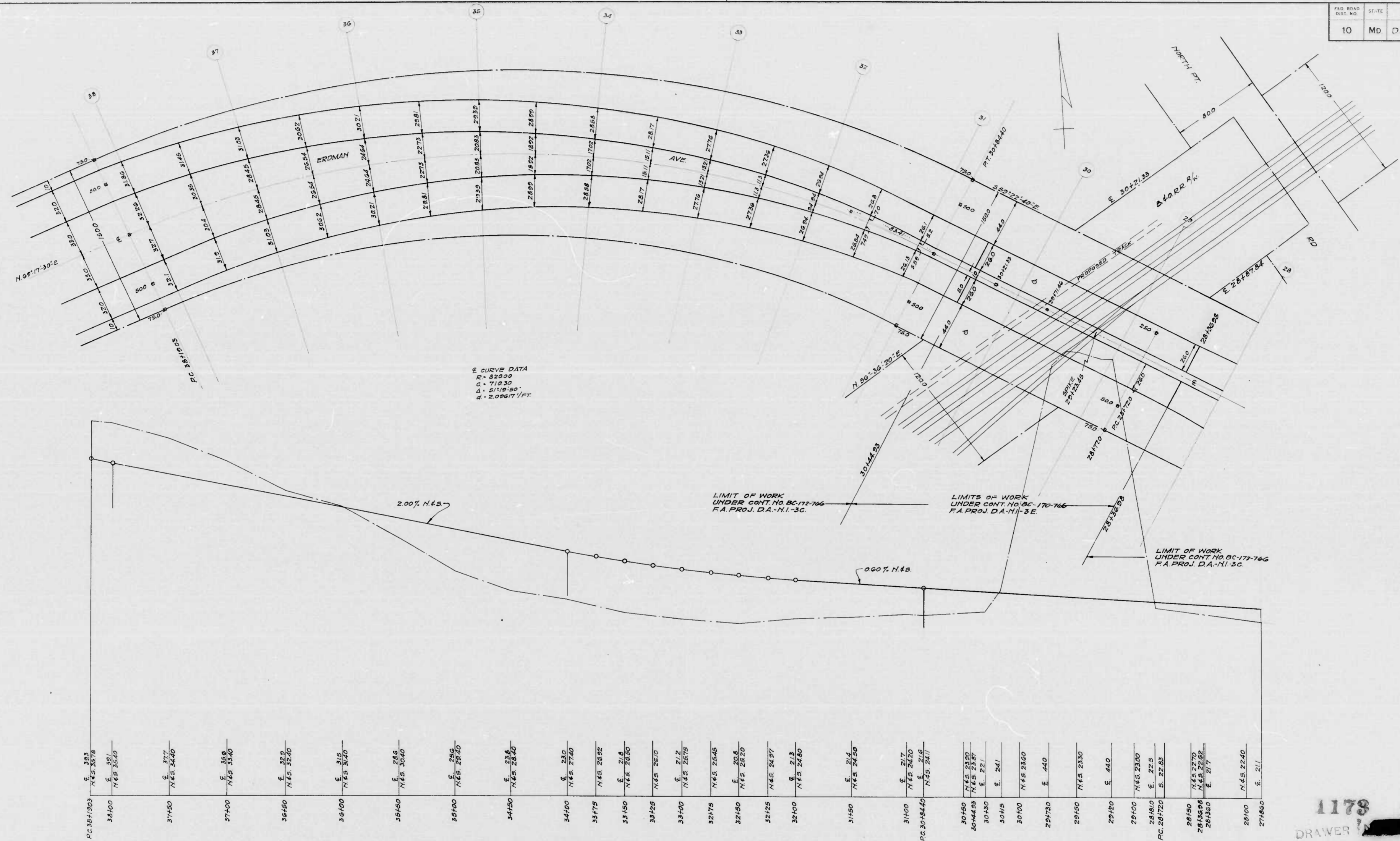
REVISIONS
CROSS-OVER & DRIVEWAY STA 40+975 TO 41+375 MAY 18, 1942 (C.V.)

STATE OF MARYLAND
STATE ROADS COMMISSION
PLANS AND SURVEYS DEPARTMENT
ERDMAN AVE - 800' W OF MAPLETON AVE - NORTH PT RD & NORTH PT RD - ERDMAN
AVE - CITY LINE - EXCLUDING B&O RR & RR UNDERPASSES
CONT. NO. BC-172-766 F. A. P. NO. DA-NI-3C SHEET NO. 6 OF 18
PREL. TRAC. BY: FINAL TRAC. BY: J.J.H.

1173

MICROFILMED
ON
APERTURE CARDS

F&D ROAD DIST. NO.	ST. STATE	F&D A&D PROJ. NO.	SHEET NO.	TOTAL SHEETS
10	MD	DA-NI-3C	7	18



E CURVE DATA
 R = 82000
 C = 710.30
 Δ = 51°18'50"
 Δ = 2.09477 / FT.

LIMITS OF WORK UNDER CONT. NO. BC-172-766 F.A. PROJ. DA-NI-3C

LIMITS OF WORK UNDER CONT. NO. BC-170-766 F.A. PROJ. DA-NI-3E

LIMITS OF WORK UNDER CONT. NO. BC-172-766 F.A. PROJ. DA-NI-3C

PC 26100	E. 323	N 45° 35' 78"
26100	E. 321	N 45° 35' 40"
27150	E. 377	N 45° 34' 40"
27100	E. 358	N 45° 33' 40"
28150	E. 352	N 45° 32' 40"
29100	E. 315	N 45° 31' 40"
29150	E. 285	N 45° 30' 40"
29100	E. 265	N 45° 29' 40"
29150	E. 238	N 45° 28' 40"
29100	E. 230	N 45° 27' 40"
29175	N 45° 26' 52"	
29150	E. 218	N 45° 26' 50"
29125	N 45° 26' 10"	
29100	E. 212	N 45° 25' 75"
29175	N 45° 25' 45"	
29150	E. 208	N 45° 25' 20"
29125	N 45° 24' 57"	
29100	E. 213	N 45° 24' 80"
29150	E. 214	N 45° 24' 50"
29100	E. 217	N 45° 24' 20"
PC 30184.40	N 65° 24' 11"	
30150	N 45° 23' 30"	
30144.23	N 45° 23' 37"	
30130	E. 221	
30115	E. 241	
30100	N 45° 23' 60"	
29173.0	E. 440	
29150	N 45° 23' 30"	
29130	E. 440	
29100	N 45° 23' 30"	
28181.0	E. 225	
PC 28172.0	S. 22' 63"	
28150	N 45° 22' 70"	
28136.06	N 45° 22' 62"	
28120	E. 217	
28100	N 45° 22' 40"	
27185.0	E. 211	

SCALE PLAN - 1 IN. = 40 FT.
 PROFILE - HOR. 1 IN. = 40 FT. - VER. 1 IN. = 4 FT.

REVISIONS

STATE OF MARYLAND
 STATE ROADS COMMISSION

PLANS AND SURVEYS DEPARTMENT

ERDMAN AVE - 350' W. OF MAPLETON AVE - NORTH PT. RD & NORTH PT. RD - ERDMAN AVE - CITY LINE - EXCLUDING 540' R.R. & P.R. UNDERPASSES

CONT. NO. BC-172-766 F. A. P. NO. DA-NI-3C SHEET NO. 7 OF 18

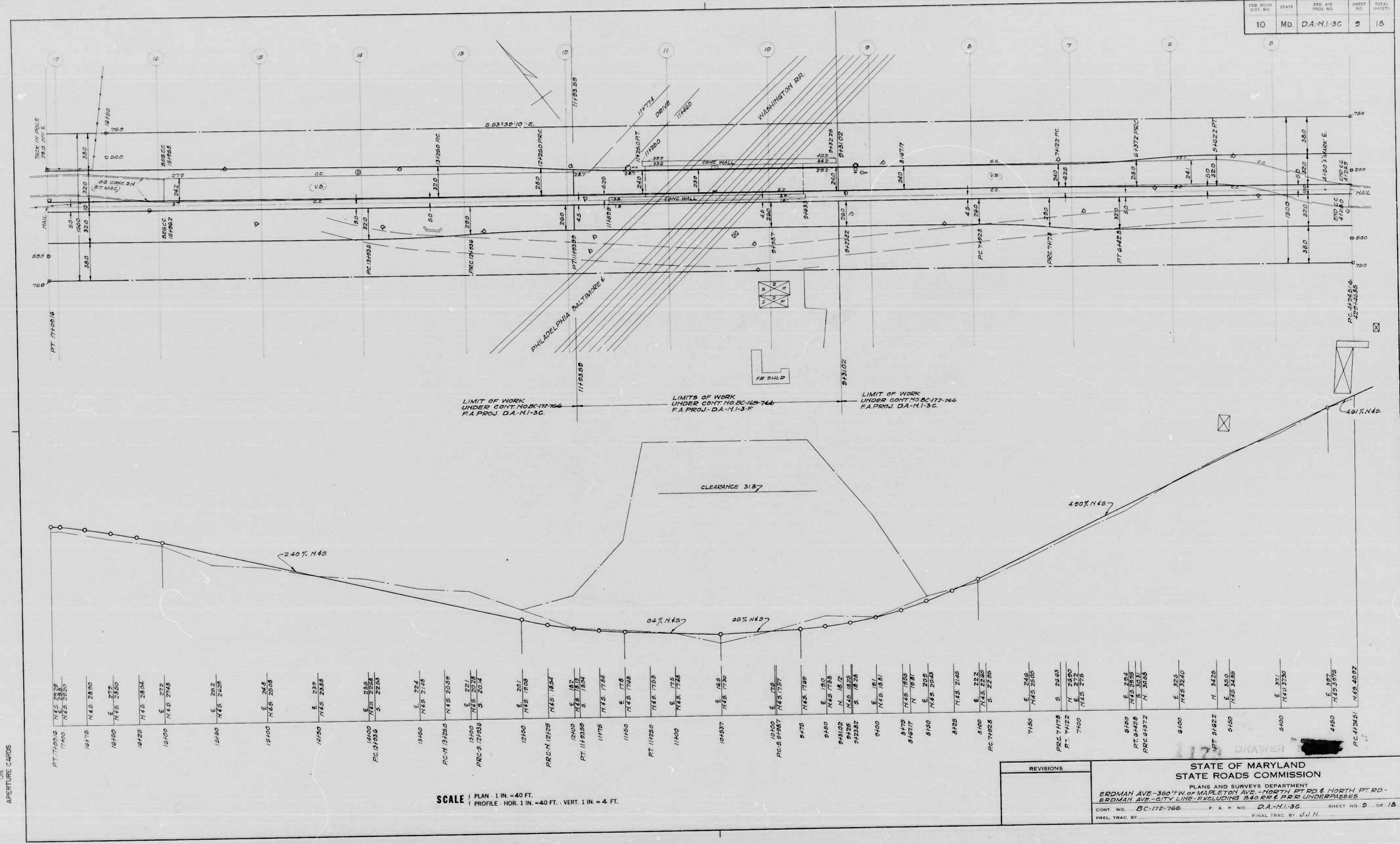
PREL. TRAC. BY: FINAL TRAC. BY: J.J.H.

1178

DRAWER

MICROFILMED ON APERTURE CARDS

FED. ROAD DIST. NO.	STATE	FED. AID PROJ. NO.	SHEET NO.	TOTAL SHEETS
10	MD.	DA-N1-3C	9	18



LIMIT OF WORK UNDER CONT. NO. BC-165-766 F.A. PROJ. DA-N1-3C

LIMITS OF WORK UNDER CONT. NO. BC-165-766 F.A. PROJ. DA-N1-3-F

LIMIT OF WORK UNDER CONT. NO. BC-172-766 F.A. PROJ. DA-N1-3-C

CLEARANCE 31.87

4.00% N45

2.40% N45

0.4% N45

0.5% N45

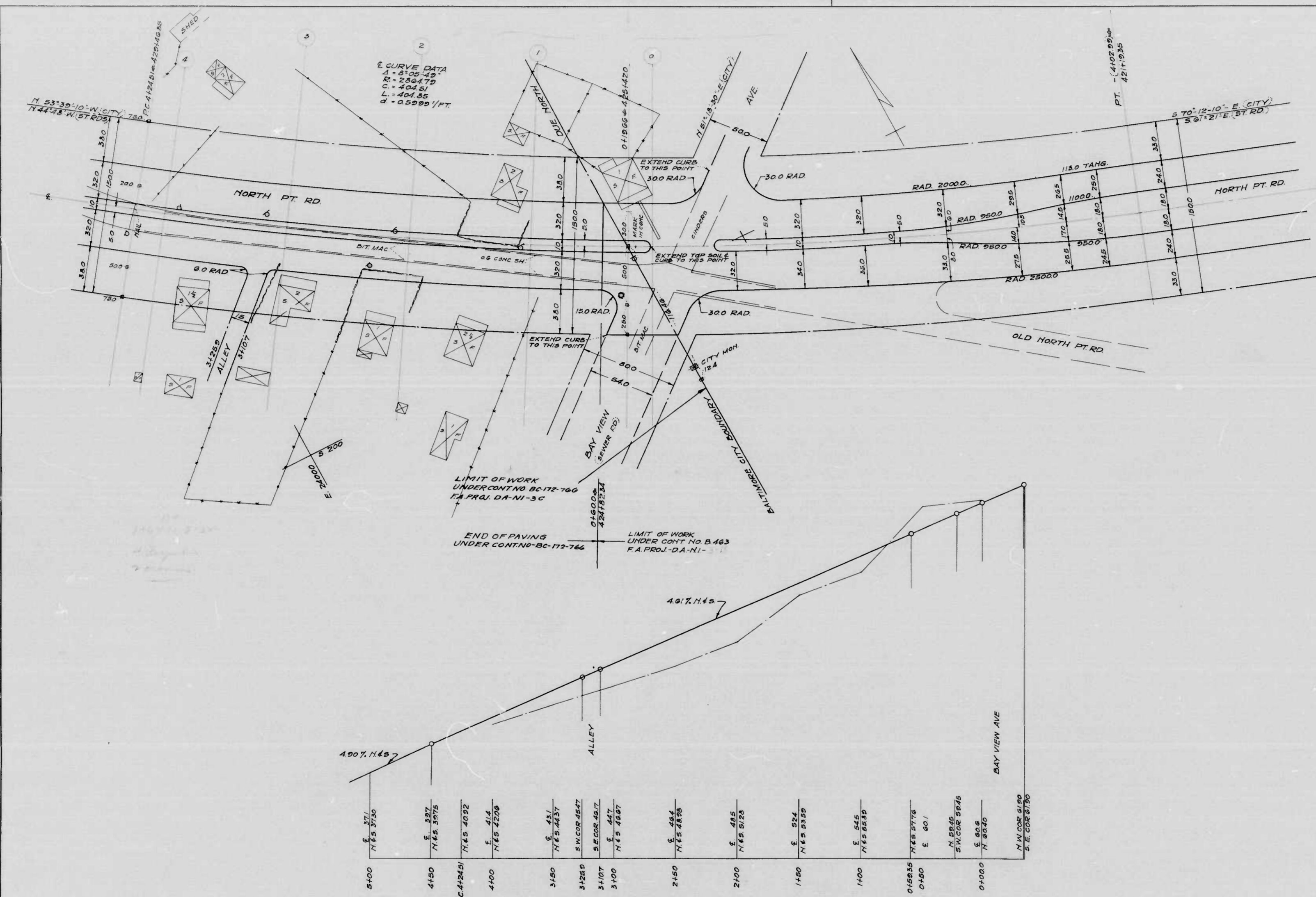
PT. 17400.6 N45 23.9 17400	16715 N45 28.90	16140 N45 28.50	15425 N45 28.34	15100 N45 27.8	15450 E 20.2 N45 25.28	15140 E 24.8 N45 25.08	14750 E 23.9 N45 23.43	14400 E 25.5 N45 22.58	14150 E 22.4 N45 21.48	13450 N45 20.69	13100 E 27.1 N45 20.24	12400 E 18.7 N45 18.24	11715 N45 17.64	11150 E 17.8 N45 17.68	RT. 114250 N45 17.65	11400 E 17.5 N45 17.46	104537 E 16.6 N45 17.30	10100 E 17.6 N45 17.57	9475 N45 17.69	9150 E 15.0 N45 17.83	91302 N 18.12	9125 N45 18.52	912382 S 18.28	9100 E 18 N45 18.61	8475 N45 19.55	816217 N 18.81	8150 E 20.9 N45 20.43	8125 N45 21.45	8100 E 22.2 N45 22.20	PC. 74928 S 22.85	7150 E 24.8 N45 25.05	PC. 74778 S 26.03	PT. 74122 N 24.90	7400 N45 27.5	6150 E 26.4 N45 26.39	PT. 64428 N 36.53	PC. 61372 N 36.53	6100 E 32.5 N45 32.40	PT. 54622 N 34.25	5150 E 30.9 N45 34.85	5100 E 37.1 N45 37.30	4450 E 39.7 N45 37.75	PC. 412451 N45 40.92
----------------------------------	--------------------	--------------------	--------------------	-------------------	------------------------------	------------------------------	------------------------------	------------------------------	------------------------------	--------------------	------------------------------	------------------------------	--------------------	------------------------------	-------------------------	------------------------------	-------------------------------	------------------------------	-------------------	-----------------------------	------------------	-------------------	-------------------	---------------------------	-------------------	-------------------	-----------------------------	-------------------	-----------------------------	----------------------	-----------------------------	----------------------	----------------------	------------------	-----------------------------	----------------------	----------------------	-----------------------------	----------------------	-----------------------------	-----------------------------	-----------------------------	-------------------------

SCALE PLAN 1 IN. = 40 FT.
PROFILE HOR. 1 IN. = 40 FT. VERT. 1 IN. = 4 FT.

REVISIONS	<p>STATE OF MARYLAND STATE ROADS COMMISSION</p> <p>PLANS AND SURVEYS DEPARTMENT</p> <p>BRDMAN AVE.-360' W. OF MAPLETON AVE.-NORTH PT. RD. & NORTH PT. RD.- BRDMAN AVE.-CITY LINE-EXCLUDING 540' R.R. & P.R.R. UNDERPASSES</p> <p>CONT. NO. BC-172-766 F.A. PROJ. NO. DA-N1-3C SHEET NO. 9 OF 18</p> <p>PREL. TRAC. BY: FINAL TRAC. BY: U.J.H.</p>
-----------	---

MICROFILMED ON APERTURE CARDS

FED. ROAD DIST. NO.	STATE	FED. AID PROJ. NO.	SHEET NO.	TOTAL SHEETS
10	MD	DA-NI-3C	10	18



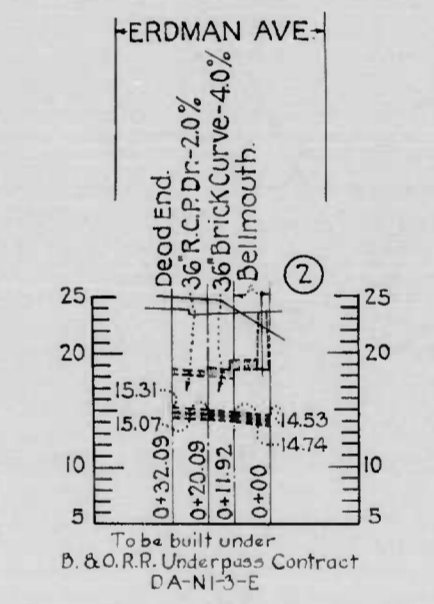
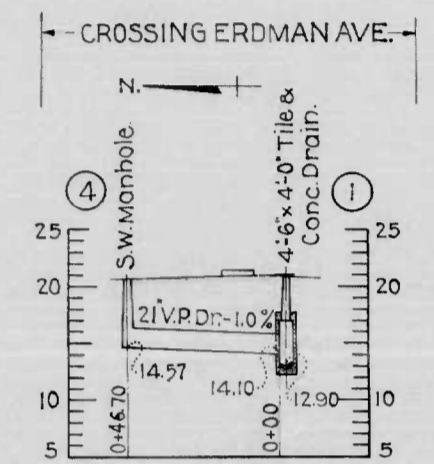
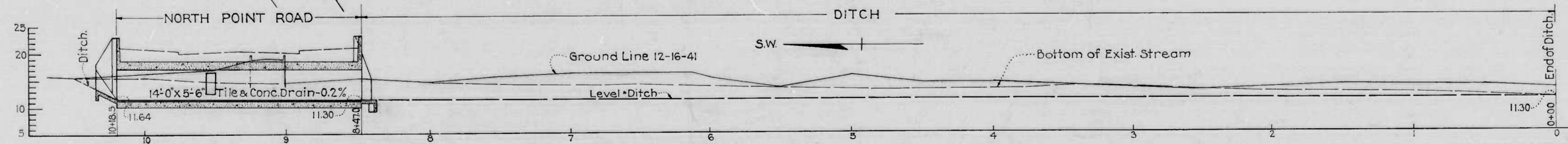
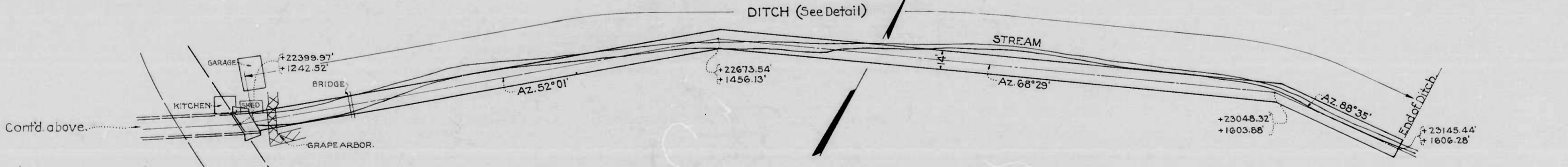
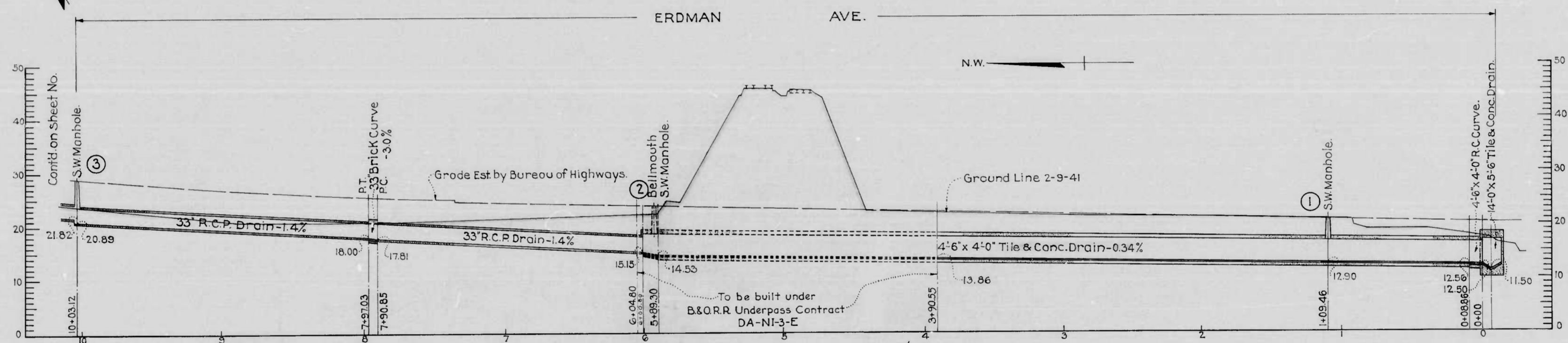
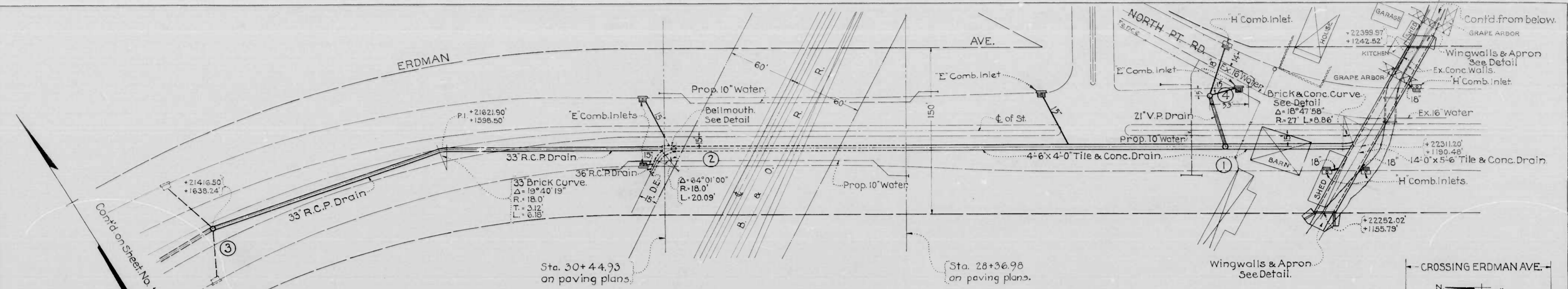
SCALE | PLAN - 1 IN. = 40 FT.
 | PROFILE - HOR. 1 IN. = 40 FT. - VERT. 1 IN. = 4 FT.

REVISIONS

1178
 DRAWER [REDACTED]

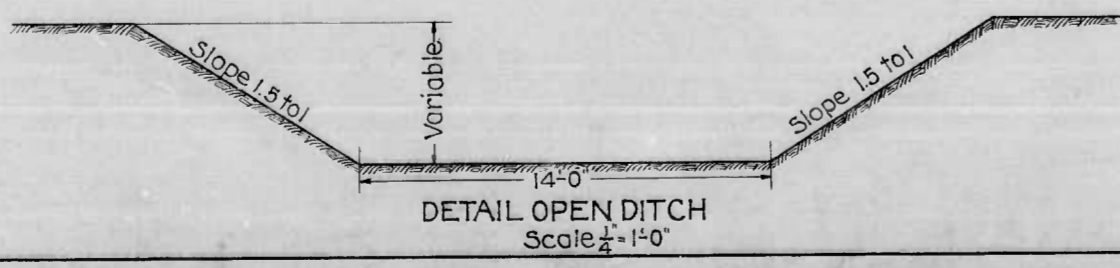
STATE OF MARYLAND
 STATE ROADS COMMISSION
 PLANS AND SURVEYS DEPARTMENT
 ERDMAN AVE - 350' W. OF MAPLETON AVE - NORTH PT. RD. & NORTH PT. RD. -
 ERDMAN AVE - CITY LINE - EXCLUDING BAY VIEW & PER UNDERPASSES
 CONT. NO. BC-172-766 F.A. PROJ. NO. DA-NI-3C SHEET NO. 10 OF 18
 PREL. TRAC. BY: FINAL TRAC. BY: J.J.H.

MICROFILMED ON APERTURE CARDS



NOTE
Obstructions are shown on this drawing for the convenience of the Contractor only, and the State Roads Commission does not guarantee the correctness or completeness of the information given. The contractor must verify all such information to his own satisfaction.

- FILE NUMBERS OF DRAWINGS
IN THIS CONTRACT (Storm Drains only)
- B.S. 80-33470
 - B.S. 80-33471
 - B.S. 80-33472
 - B.S. 80-33473
 - B.S. 80-33493
 - B.S. 80-33477



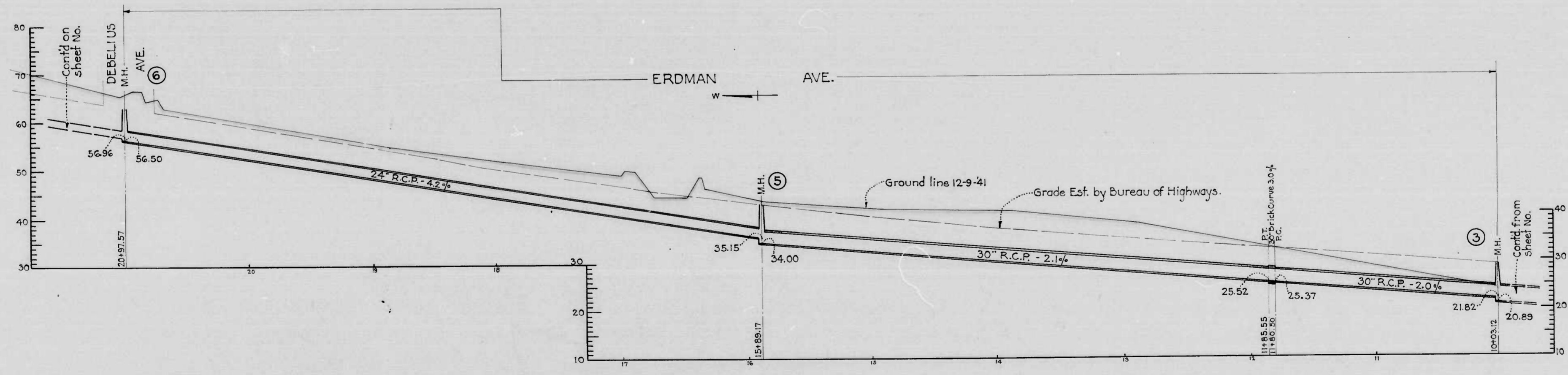
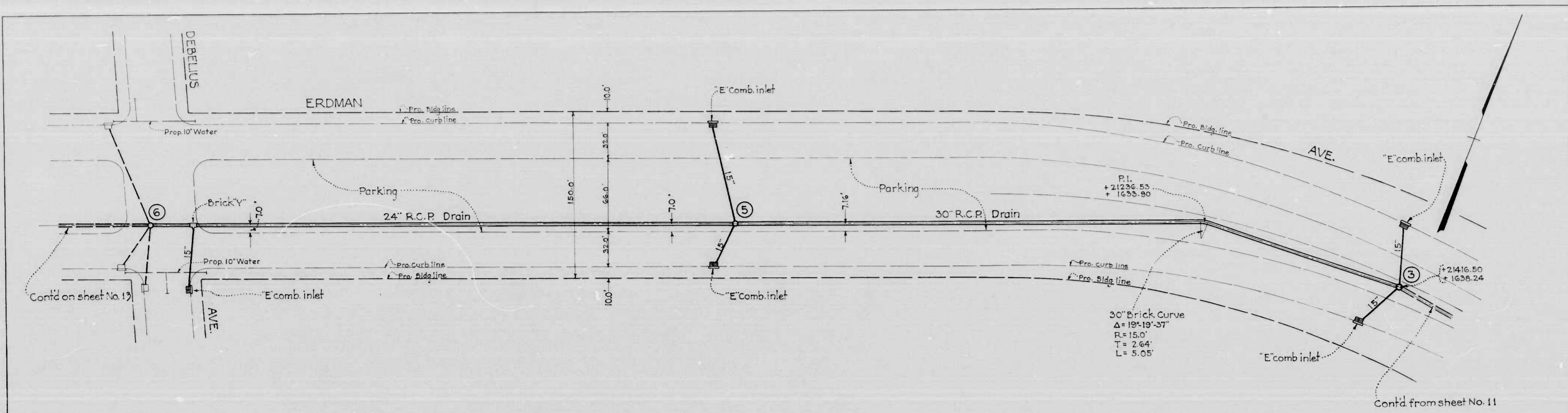
MICROFILMED ON APERTURE CARDS

DRAWN BY: _____
TRACED BY: _____
CHECKED BY: _____

BC-172-766

Serial Numbers of Manholes shown thus: ③

Erdman Ave & North Ave
Plans & Profiles - 340' Long
Sheet #1 of 18
DA-NI-3-E
1178
DRAWER: _____



Serial Numbers of Manholes shown thus: ③

NOTE
 Obstructions are shown on this drawing for the convenience of the Contractor only, and the State Roads Commission does not guarantee the correctness or completeness of the information given. The Contractor must verify all such information to his own satisfaction.

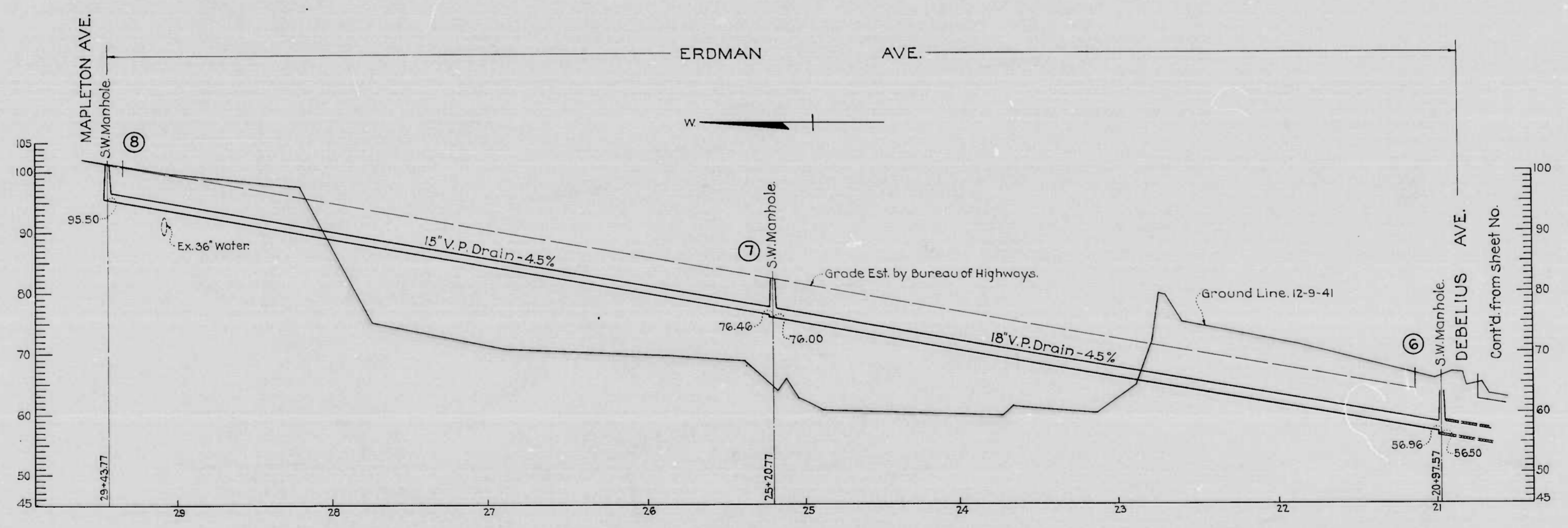
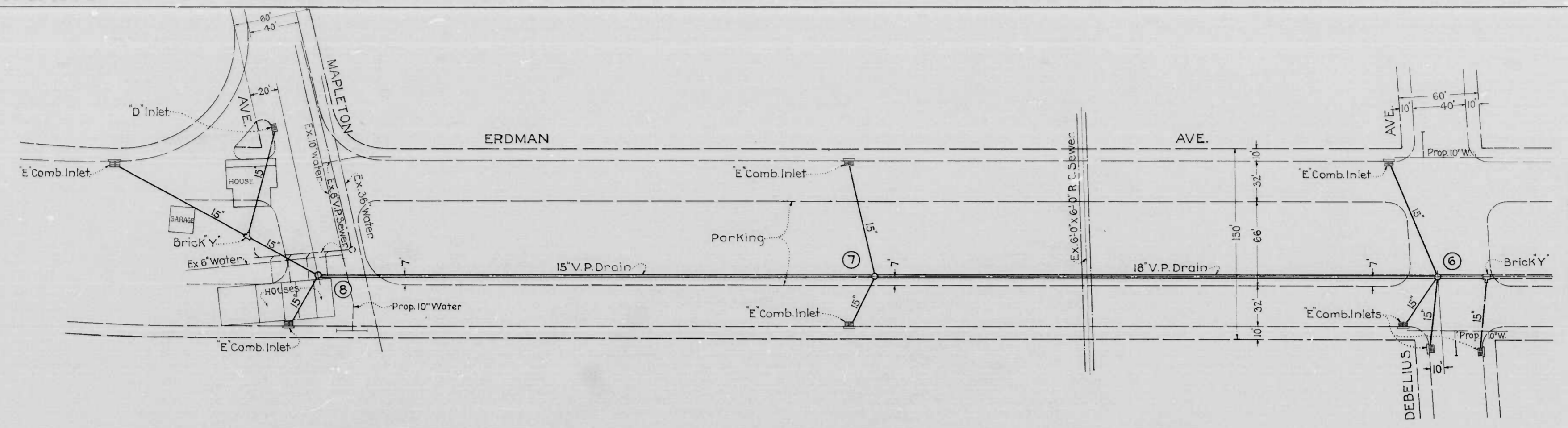
Erldman Ave & North First St
 Plans & Profiles - S. W. Drains
 Sheet 12-20-18
 DA-NI-2-C
 1178
 DRAWER: [Signature]

BC-172-766

MICROFILMED ON APERTURE CARDS

DRAWN BY: _____
 TRACED BY: _____
 CHECKED BY: _____

B.S. 80-33472



NOTE
 Obstructions are shown on this drawing for the convenience of the Contractor only, and the State Roads Commission does not guarantee the correctness or completeness of the information given. The Contractor must verify all such information to his own satisfaction.

Serial Numbers of Manholes shown thus: ③

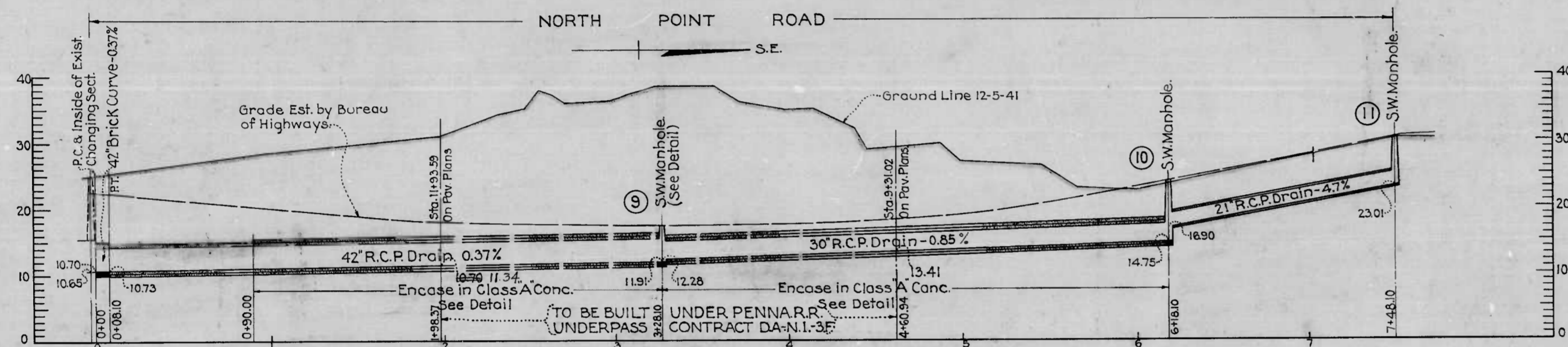
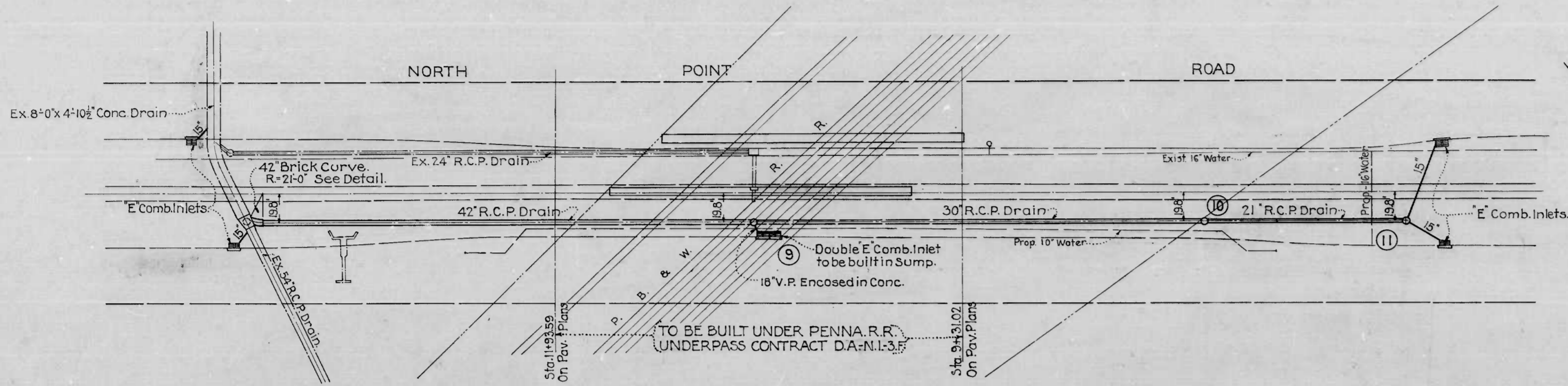
Erdman Ave & North Point
 Plans & Profiles - C.S.R. Drain
 Sheet 13 24 72
 DA-NI-2-C
 1179
 DRAWER [REDACTED]

BC-172-766

MICROFILMED ON APERTURE CARDS

DRAWN BY: _____
 TRACED BY: _____
 CHECKED BY: _____

B.S.80-33473



NOTE
 Obstructions are shown on this drawing for the convenience of the Contractor only and the State Roads Comm. does not guarantee the correctness or completeness of the information given. The Contractor must verify all such information to his own satisfaction.

BC-172-766

Serial Numbers of manholes shown thus: ③

Edman Ave & North Point Rd
 Plans & Profiles - S.V. Drains
 Sheet 14 of 18
 DA-NI-3-C

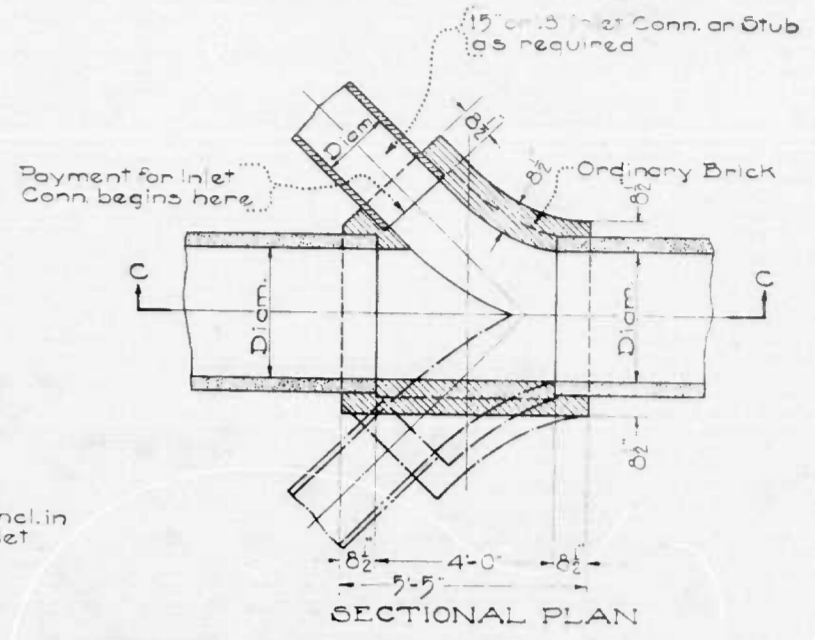
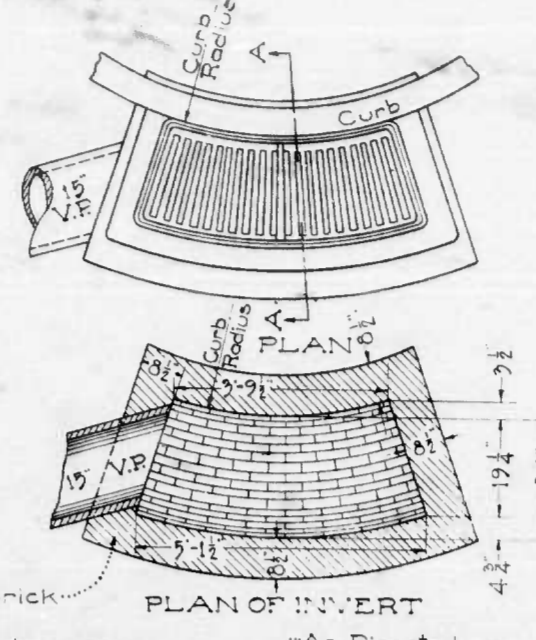
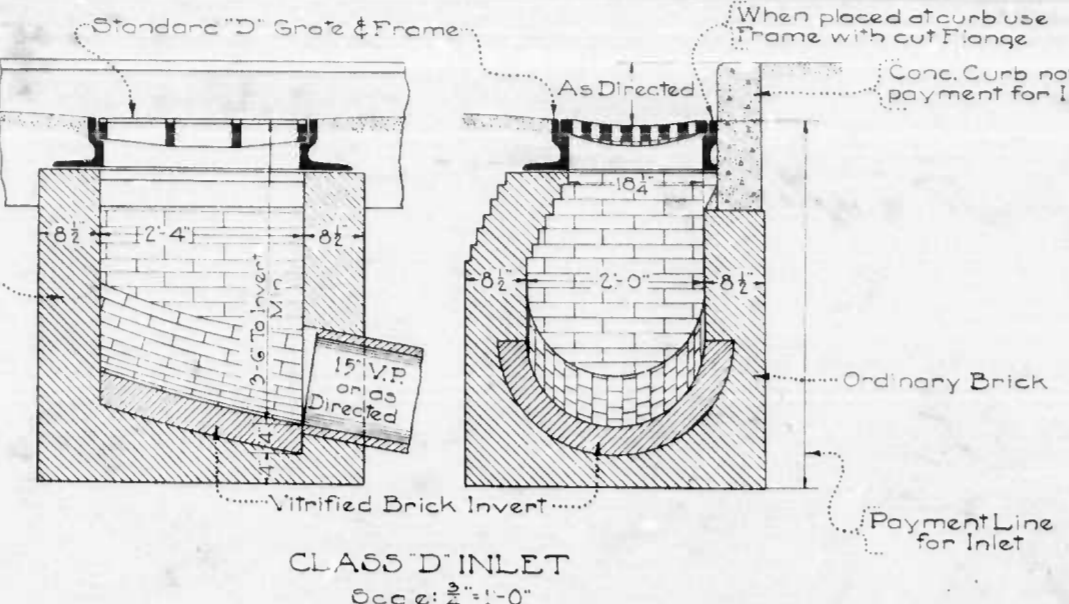
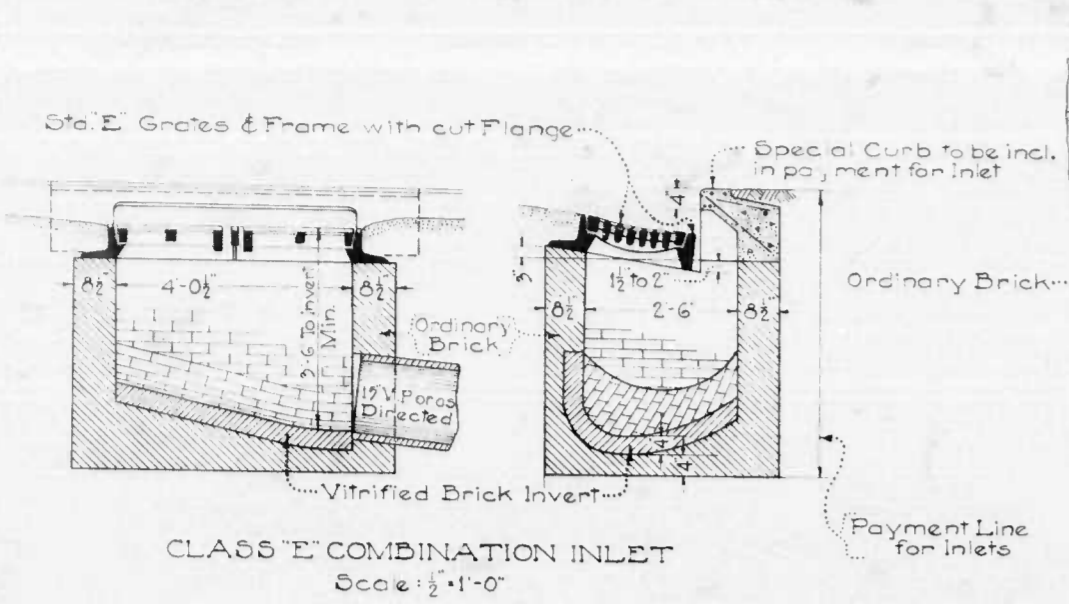
1173

DRAWER [REDACTED]

MICROFILMED ON APERTURE CARDS

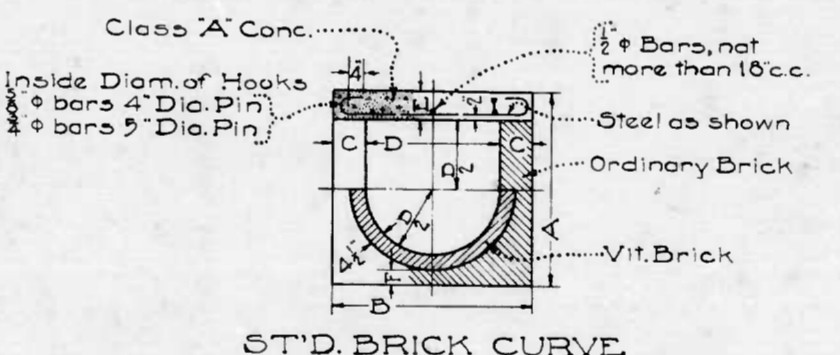
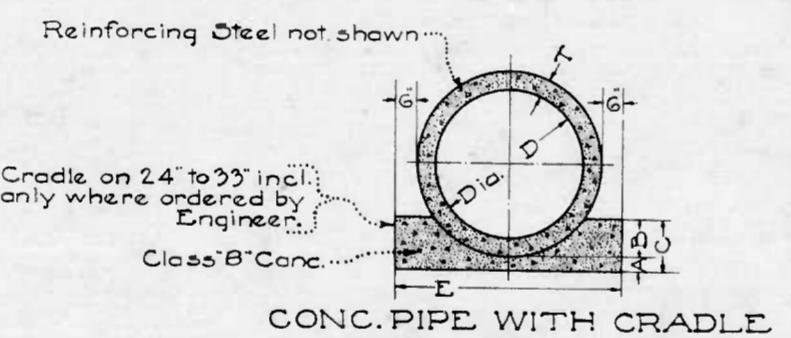
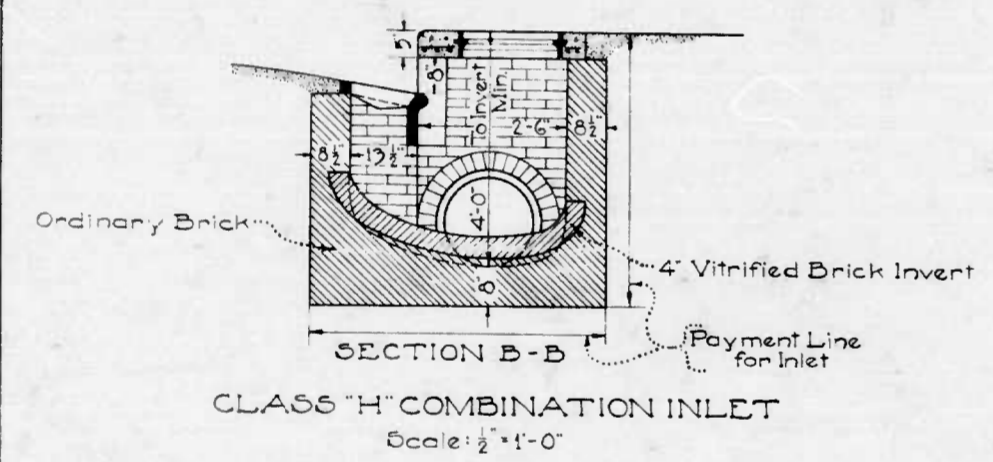
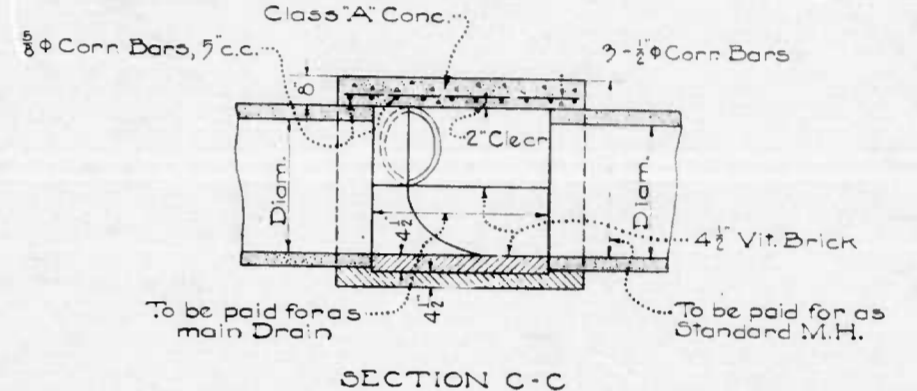
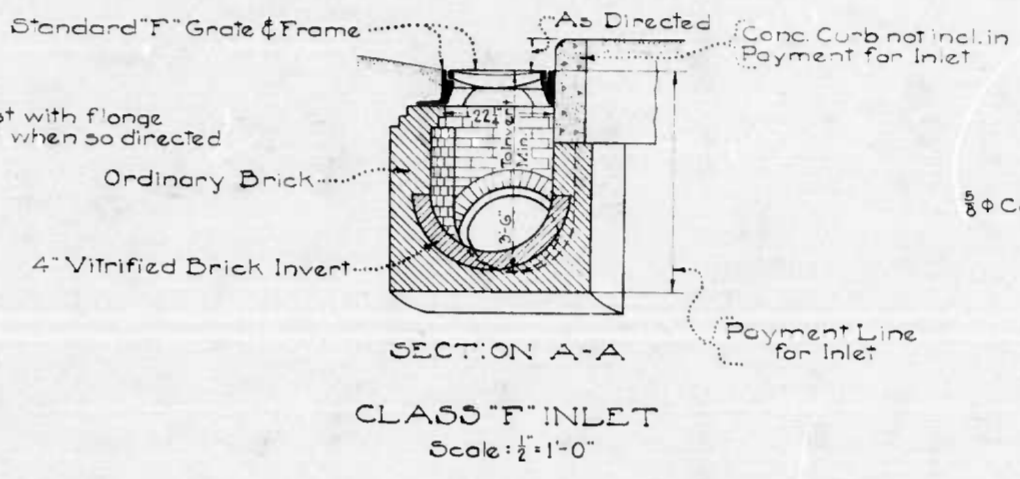
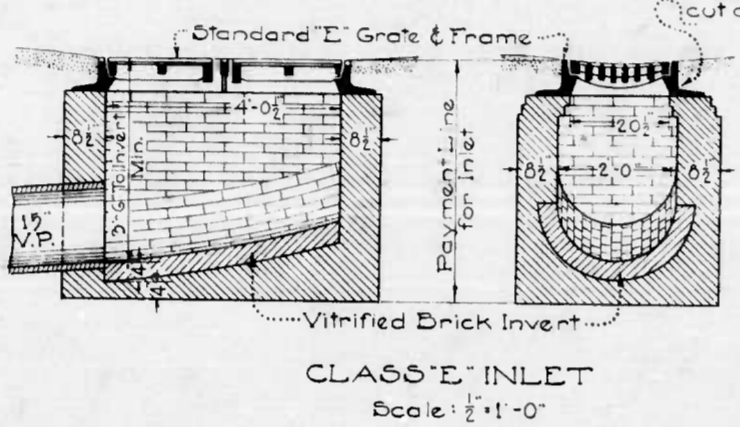
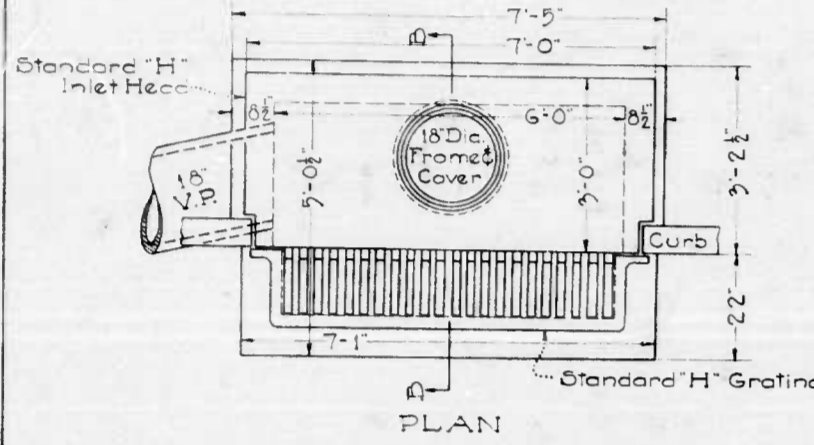
DRAWN BY: _____
 TRACED BY: _____
 CHECKED BY: _____

10 MP DRAIN 16 1



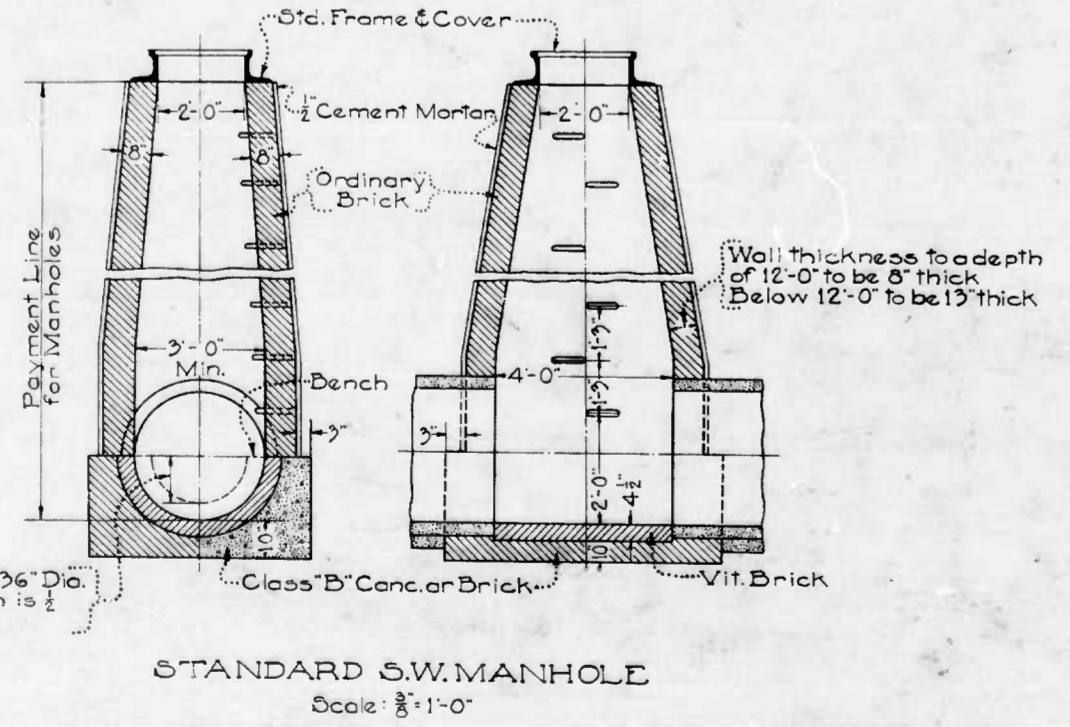
Note: Inverts to slope at least 2 per foot toward outlet

Note: Direction of Inlet Connections will vary to suit conditions



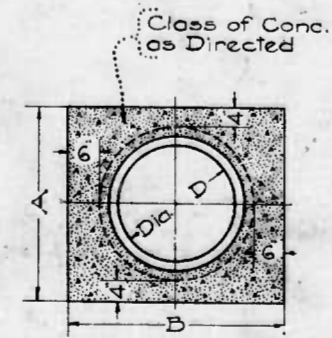
DIMENSIONS						
D	A	B	C	T	W	H
24	3	6	9	3-6	3	3
27	3	7	10	3-10	3 1/2	3 1/2
30	4	7 1/2	11 1/2	4-1	3 1/2	3 1/2
33	4	8	12	4-7	4	4
36	4	9	13	4-8	4	4
42	4	10 1/2	14 1/2	5-3	4 1/2	4 1/2
48	4	12	16	5-10	5	5
54	4	13 1/2	17 1/2	6-5	5 1/2	5 1/2

DIMENSIONS						
SIZE	A	B	C	E	F	Steel
24	3-5	3-6	9	8	4	3/8" Conn Bars 10" cc.
27	3-6	3-9	9	8	4	3/8" Conn Bars 8" cc.
30	3-11	4-0	9	8	4	3/8" Conn Bars 7" cc.
33	4-2	4-3	9	8	4	3/8" Conn Bars 6" cc.
36	4-5	4-6	9	8	4	3/8" Conn Bars 5" cc.
42	5-3	5-8	13	10	6	3/8" Conn Bars 6" cc.
48	5-9	6-2	13	10	6	3/8" Conn Bars 5" cc.
54	6-2	6-8	13	10	6	3/8" Conn Bars 8" cc.



For Pipe less than 36 Dia. the height of Bench is internal dia. of Pipe

Wall thickness to depth of 12'-0" to be 8" thick Below 12'-0" to be 13" thick



DIMENSIONS		
D	A	B
8	1-8	2-0
10	1-10 1/2	2-2 1/2
12	2-1	2-5
15	2-5	2-9
18	2-9	3-1
21	3-1	3-5

VIT. PIPE ENCASEMENT

BC-172-766
 Erdman & E. North
 Standard Details. S.W. Drains
 Sheet 16 of 18
 DA-NI-3-C
 1128

MICROFILMED ON APERTURE CARDS

DRAWN BY
 TRACED BY
 CHECKED BY

