

INDEX OF SHEETS

SHEET NO.	TITLE PAGE & LAYOUT
2	TYPICAL CROSS SECTIONS OF IMPROVEMENT
3	PLAN & PROFILE STA. 0+00.75 TO STA. 5+50.00
4	" " " 6+00.00 " " 12+00.00
5	" " " 16+00.00 " " 20+00.00
6	" " " 20+00.00 " " 26+00.00
7	" " " 26+00.00 " " 32+00.00
8	PLAN " 32+00.00 " 37+10.18
9	PROFILE " " " " " " " " " "
10	PLAN & SPECIAL DETAILS--SEWER
11	PROFILES " " " " " " " " " "
12	STANDARD DETAILS " " " " " " " " " "
13	SUMMARY " " " " " " " " " "
14	" " PAVING " " " " " " " " " "

STATE OF MARYLAND STATE ROADS COMMISSION

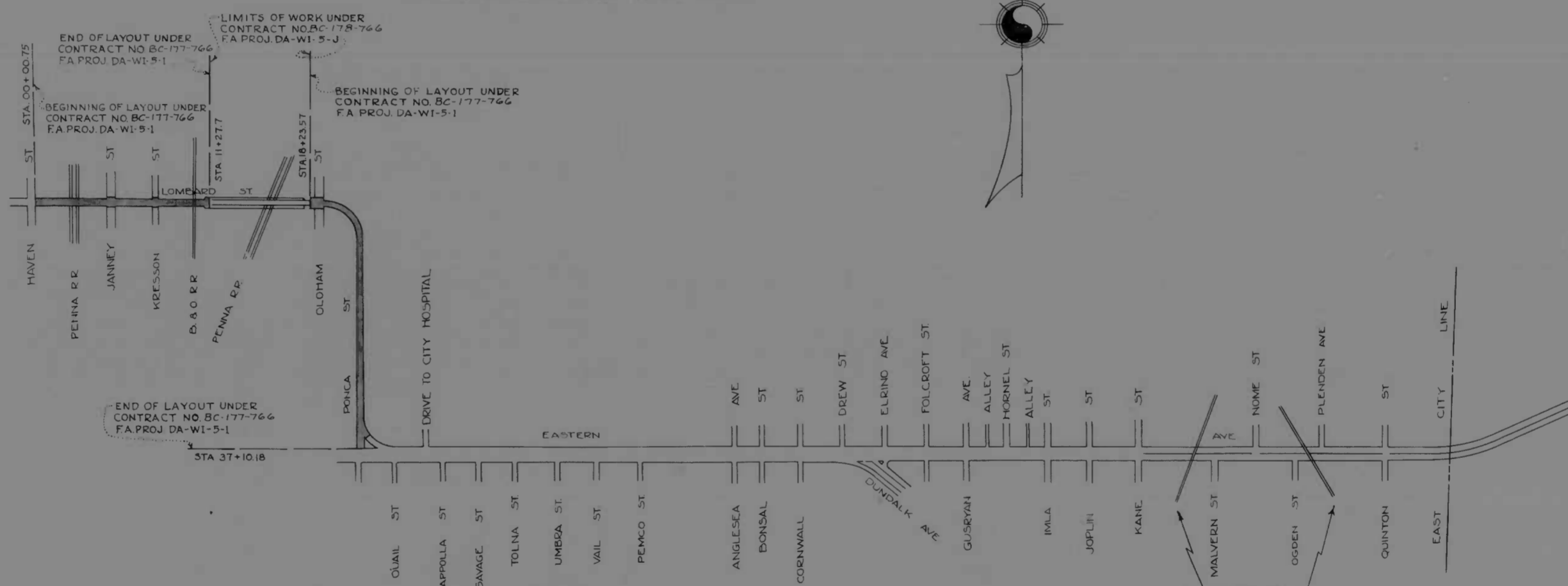
PLAN AND PROFILE OF PROPOSED STATE HIGHWAY

FEDERAL AID PROJECT NO. DA-WI-5-1

BALTIMORE CITY

LOMBARD ST.-HAVEN ST. TO PONCA ST.
PONCA ST.-LOMBARD ST. TO EASTERN AVE.

SCALE PLAN 1 IN = 20 FT.
PROFILE HOR 1 IN = 20 FT. VERT 1 IN = 2 FT.



CONVENTIONAL SIGNS

STATE AND NATIONAL LINE	-----	CULVERTS	—[]—
COUNTY LINE	-----	RETAINING WALL	—[]—
CITY OR VILLAGE	-----	DROP INLET	—[]—
FENCE LINE	-----	TROLLEY POLE	—[]—
GUARD RAIL	-----	POWER POLE	—[]—
UNFENCED PROPERTY	-----	TELEPHONE OR TELEGRAPH POLE	—[]—
RIGHT OF WAY LINE	-----	MARSH	—[]—
TRAVELED WAY	-----	HEDGE	—[]—
RAILROADS	-----	GROUND ELEVATION	DATUM LINE []
BASE OR SURVEY LINE	-----	GRADE ELEVATION	DATUM LINE []

LAYOUT
SCALE: 1"=500'

BC-177-766

FOR DETAILS OF CULVERTS, ETC. SEE STANDARD SHEET.
STATE SPECIFICATIONS AND STANDARD PLANS ON FILE IN BUREAU OF PUBLIC ROADS.

DRAWER []

APPROVED
James C. []
CHIEF ENGINEER, CITY OF BALTIMORE

APPROVED
William J. Ballou
CHIEF ENGINEER, STATE ROADS COMMISSION

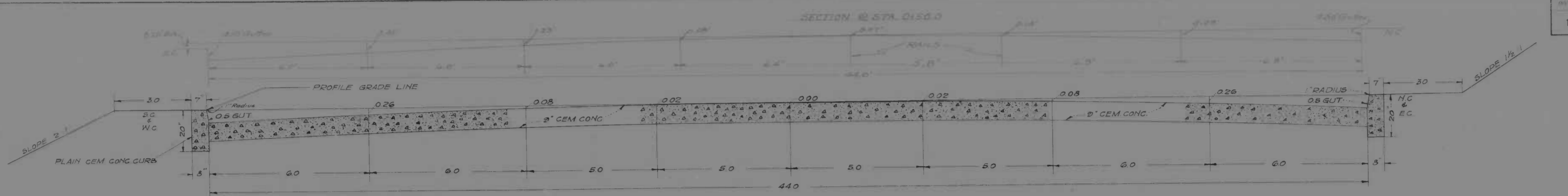
RECOMMENDED FOR APPROVAL

[]
DISTRICT ENGINEER
PUBLIC ROADS ADMINISTRATION
FEDERAL WORKS AGENCY

APPROVED
[]
COMMISSIONER
PUBLIC ROADS ADMINISTRATION
FEDERAL WORKS AGENCY

MICROFILMED
ON
APERTURE CARDS

FED. ROAD DIST. NO.	STATE	FED. AID PROJ. NO.	SHEET NO.	TOTAL SHEETS
10	MD	DA W-51	7	14



"NOTE"
 The 3ft sidewalk area as indicated above will be constructed along Ponca St. Along Lombard St, the proposed sidewalk as indicated on the quantity sheet is for that portion of sidewalk which may be damaged during the course of construction.

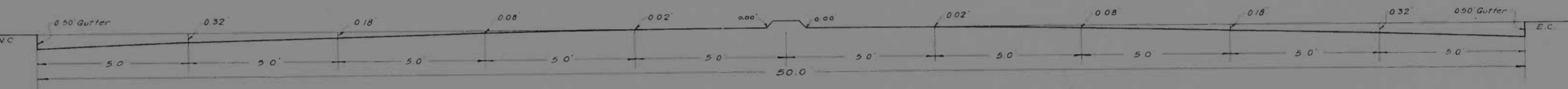
SECTION FOR
 STA 0+00.0 TO STA 2+00.0
 STA 3+25.0 TO STA 2+60.0
 STA 24+30.0 TO EASTERN AVE.
 LEVEL CURBS

- STRAIPS LEGEND**
- A-1 Sand with fine
 - A-2 Sand, coarse
 - A-4 Silt
 - A-7 Clay
 - A-7-1 Clay, silty

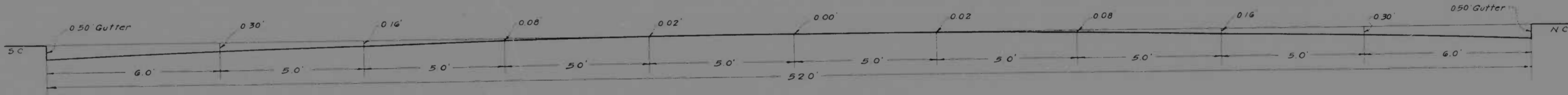
Note:
 From 3/25/50 to 3/26/50, borings were taken at all sites of pavement. Due to proposed paving and existing soil conditions, in the same conditions were identified to determine T₂ should be considered when estimating soil conditions as shown on plan.



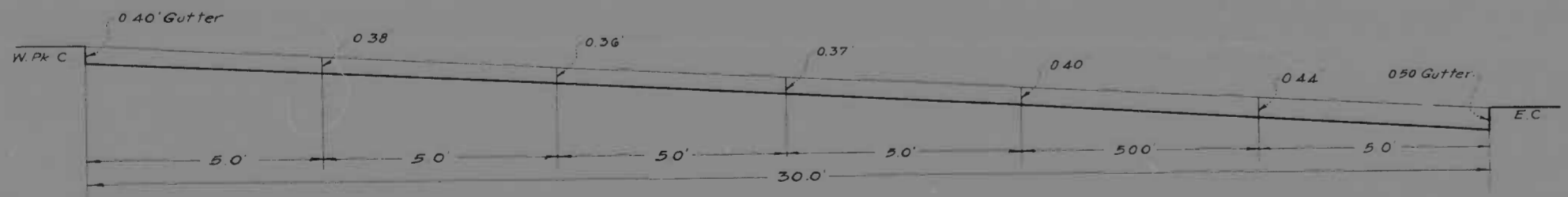
SECTION AT STA 19+55.0 & AT STA 22+31.15
 LEVEL CURBS



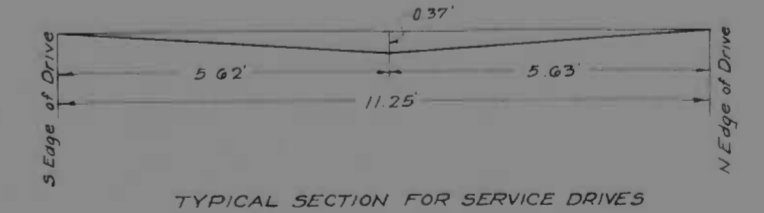
SECTION AT STA 20+50.0
 LEVEL CURBS



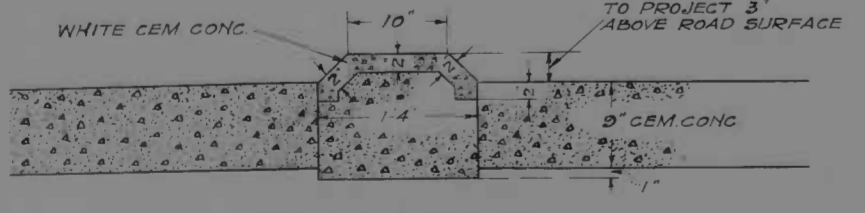
SECTION FOR STA 10+00.0 TO STA 11+00.0
 LEVEL CURBS



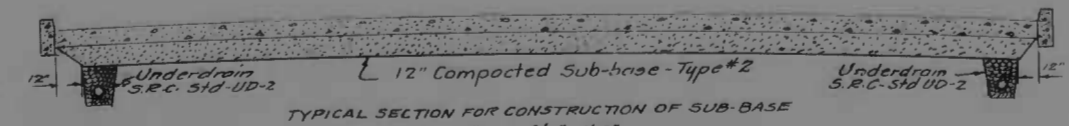
SECTION AT STA 1+34.2 - EAST DRIVE PONCA ST
 0.66" DIFFERENCE IN CURBS



TYPICAL SECTION FOR SERVICE DRIVES



DETAIL OF E MARKER
 STA 10+03.0 TO STA 23+30.0
 SCALE = 1" = 1'-0"



TYPICAL SECTION FOR CONSTRUCTION OF SUB-BASE
 Scale 3/4" = 1'-0"

SCALE 1/2" = 2 FT

REVISIONS

1	11/23/50	Added and changed
2	11/23/50	Added and changed

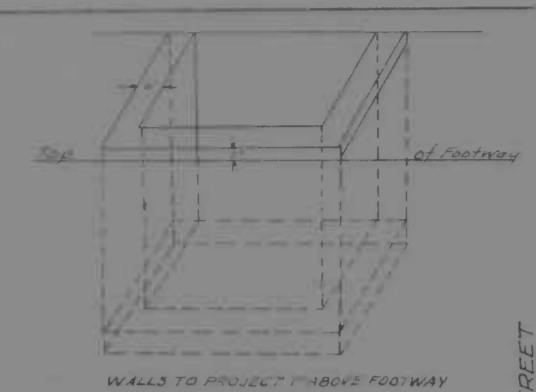
STATE OF MARYLAND
 STATE ROADS COMMISSION
 PLANS AND SURVEYS DEPARTMENT
 LOMBARD ST - HAUVEN ST - PONCA ST
 PONCA ST - LOMBARD ST - EASTERN AVE

CONT. NO. BC-177-766 F. A. P. NO. DA W-51 SHEET NO. 2 OF 14

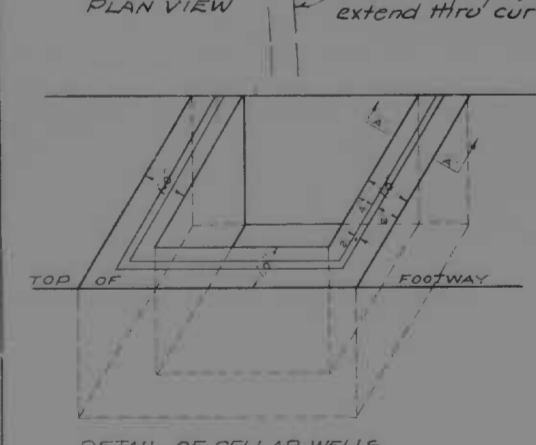
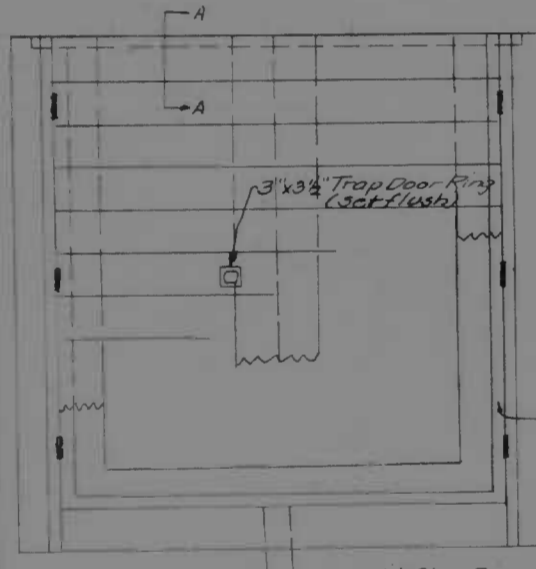
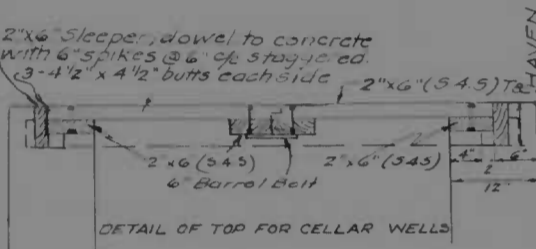
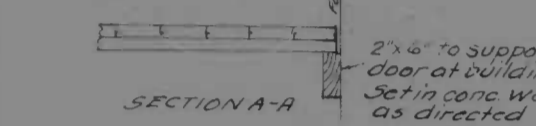
APPROVED: *William T. Ball* Chief Engineer
 MICROFILMED ON APERTURE CARDS

10	MD	DA-WI-51	3	14
----	----	----------	---	----

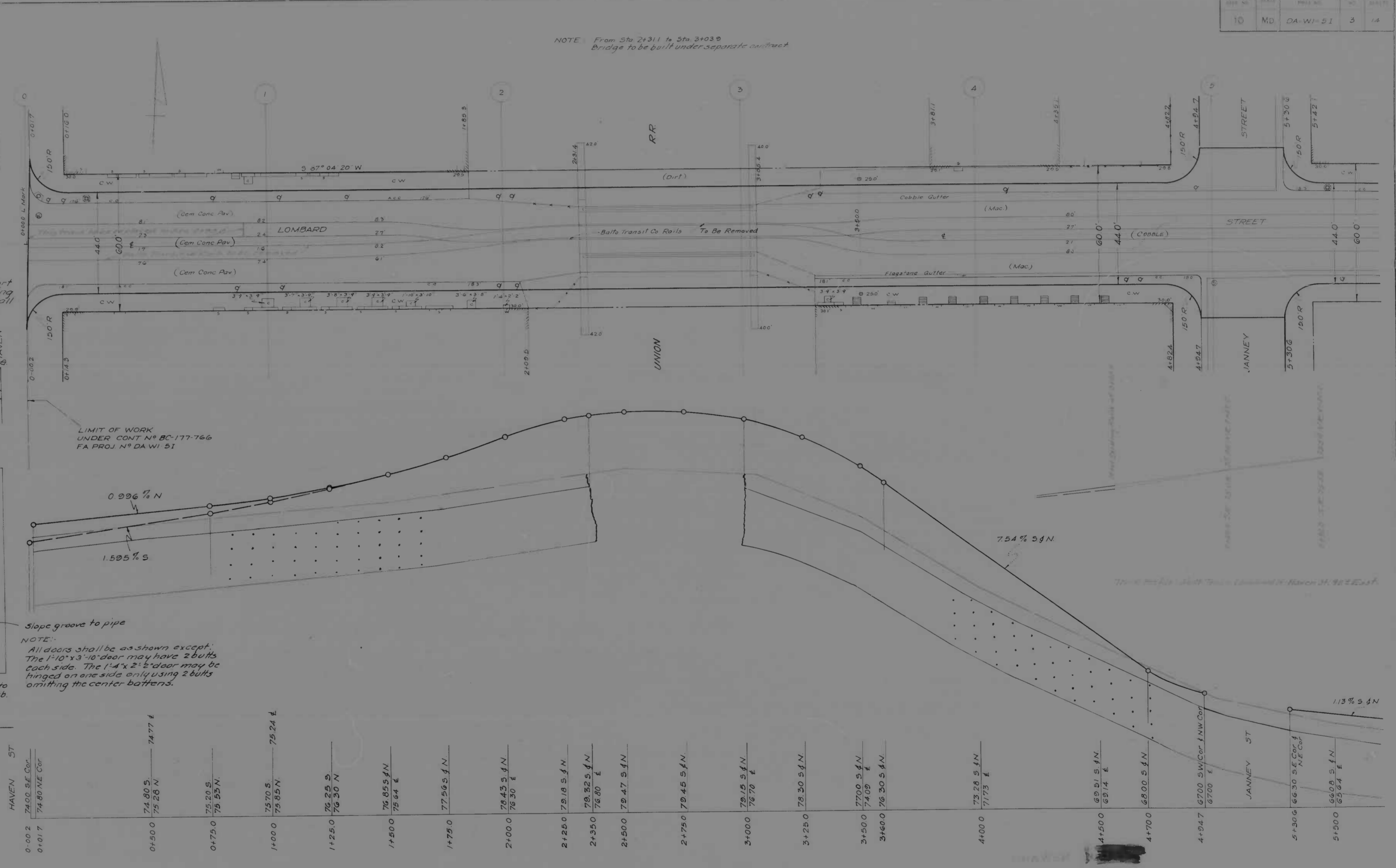
NOTE: From Sta 2+31.1 to Sta 3+03.9
Bridge to be built under separate contract



Class A Cement Concrete Wall Walls
Cellar Windows & Steps are to be
constructed between Sta 0+00 &
Sta 5+00. The locations & size to be
determined by the Engineer.



CLASS A CEMENT CONCRETE CELLAR WELLS
TO BE CONSTRUCTED BETWEEN STA 0+00 & STA 5+00
THE LOCATIONS TO BE DETERMINED BY THE ENGINEER.
FOR SIZE OF OPENINGS SEE DIMENSIONS ON THIS PLAN.
FOR DETAIL OF TOP SEE SKETCH ABOVE.



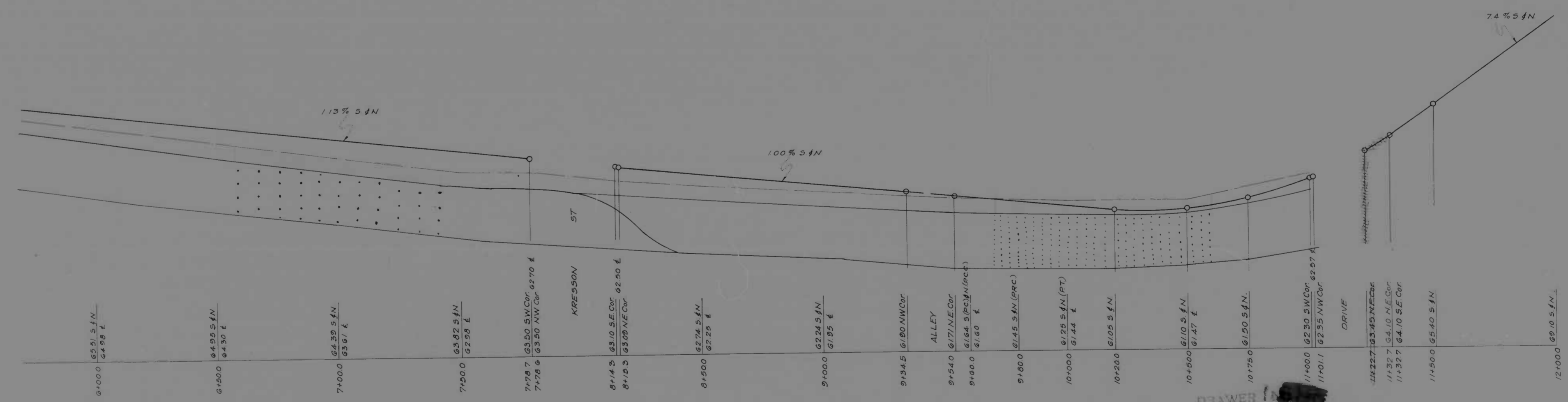
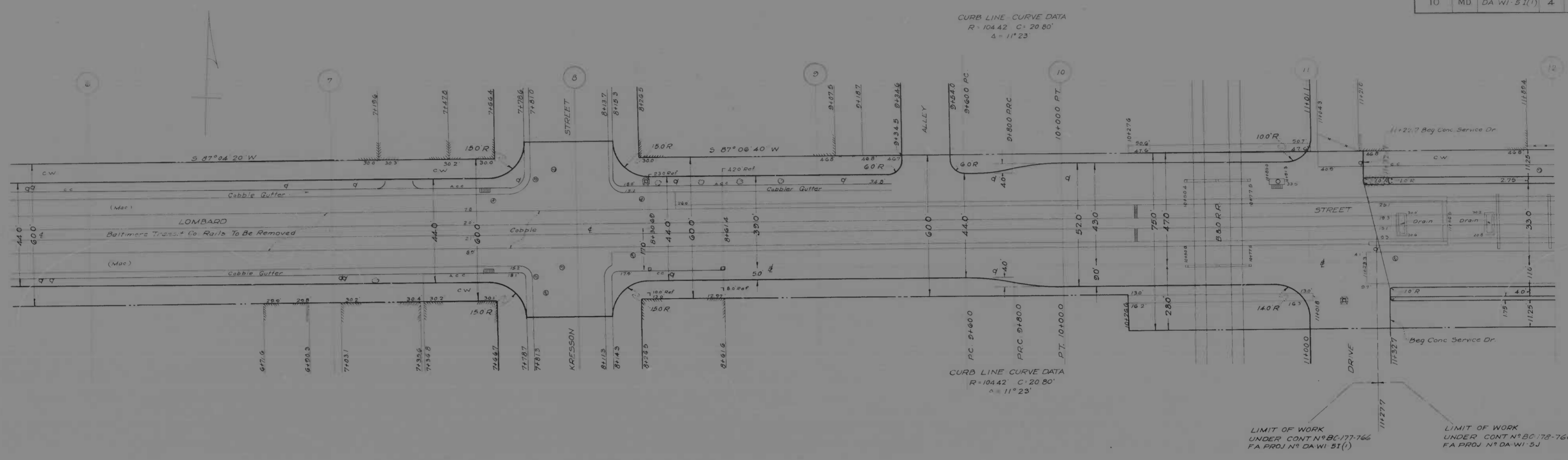
0+00	74.80 S 75.80 N	0+10	74.77 E
0+50	75.20 S 75.55 N	1+00	75.24 E
1+50	76.25 S 76.30 N	2+00	76.30 E
2+50	77.30 S 77.35 N	3+00	77.35 E
3+50	78.35 S 78.40 N	4+00	78.40 E
4+50	79.40 S 79.45 N	5+00	79.45 E
5+00	80.45 S 80.50 N	5+00	80.50 E

SCALE: PLAN 1 IN = 20 FT.
PROFILE HOR 1 IN = 20 FT. VERT 1 IN = 2 FT.

REVISIONS	STATE OF MARYLAND STATE ROADS COMMISSION PLANS AND SURVEYS DEPARTMENT LOMBARD ST - HAVEN ST - PONCA ST PONCA ST - LOMBARD ST - EASTERN AVE CONT NO. BC-177-766 F.A.P. NO. DA-WI-51 SHEET NO. 3 OF 14 PREL. TRAC BY: _____ FINAL TRAC BY: _____
-----------	--

MICROFILMED ON APERTURE CARDS

10	MD	DA WI 51(1)	4	14
----	----	-------------	---	----



SCALE | PLAN 1 IN = 20 FT.
| PROFILE HOR 1 IN = 20 FT. VERT. 1 IN = 2 FT.

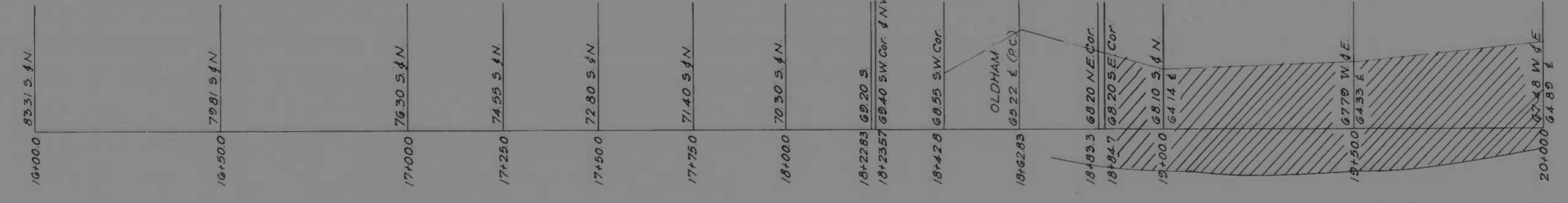
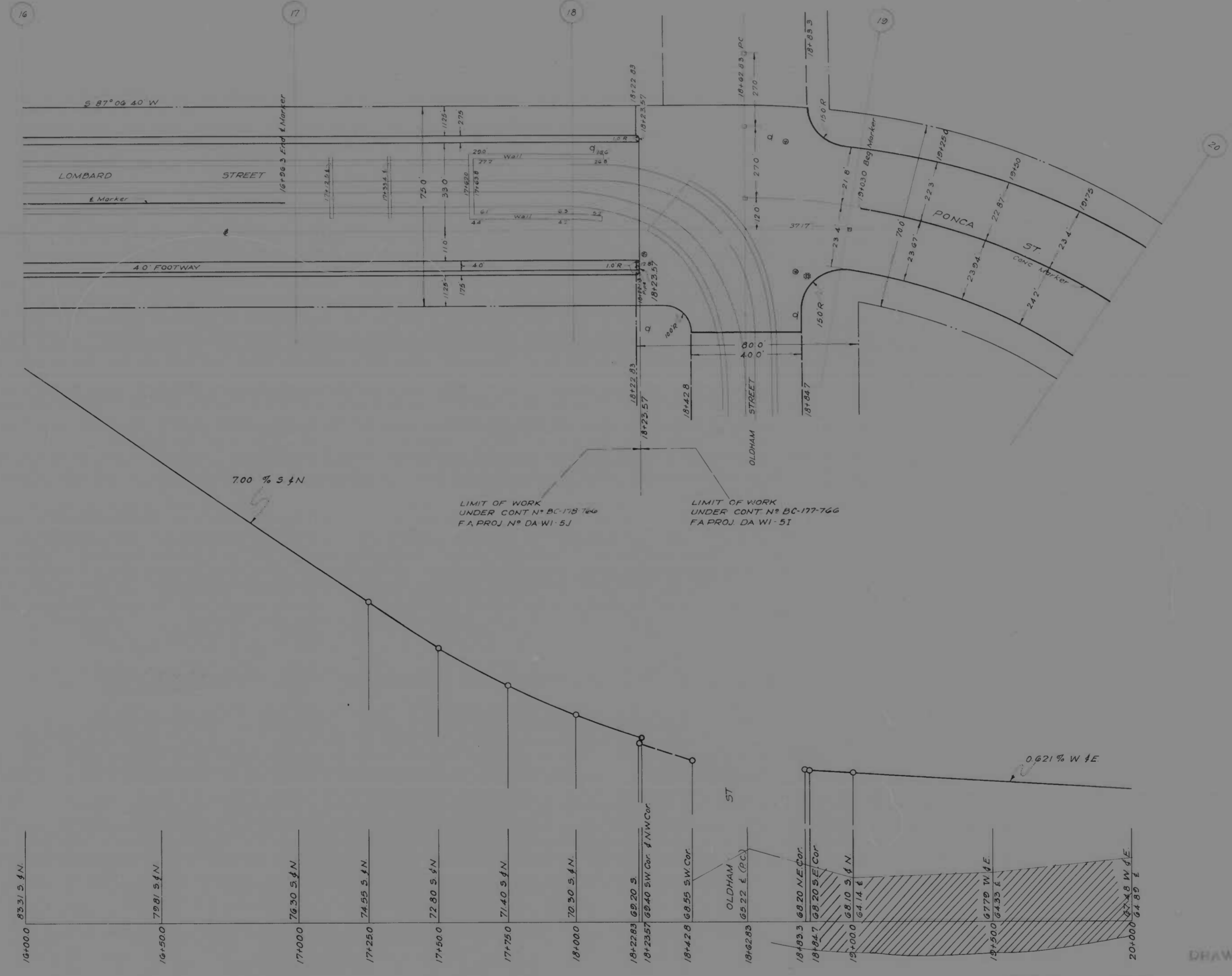
REVISIONS
5-27-43 Curb Revision

STATE OF MARYLAND
STATE ROADS COMMISSION
PLANS AND SURVEYS DEPARTMENT
LOMBARD ST - HAVEN ST - PONCA ST
PONCA ST - LOMBARD ST - EASTERN AVE
CONT NO. BC-177-766 F.A.P. NO. DA WI 51(1) SHEET NO. 4 OF 14
PREL. TRAC. BY: FINAL TRAC. BY:

1179

MICROFILMED ON APERTURE CARDS

CONTRACT NO.	STATE	FED. AID PROJ. NO.	SHEET NO.	TOTAL SHEETS
10	MD	DA W1-51	5	14



LIMIT OF WORK UNDER CONT. N° BC-177-766 F.A. PROJ. N° DA W1-51

LIMIT OF WORK UNDER CONT. N° BC-177-766 F.A. PROJ. DA W1-51

MICROFILMED ON APERTURE CARDS

SCALE | PLAN - 1 IN. = 20 FT.
| PROFILE - HOR. 1 IN. = 20 FT., VERT. 1 IN. = 2 FT.

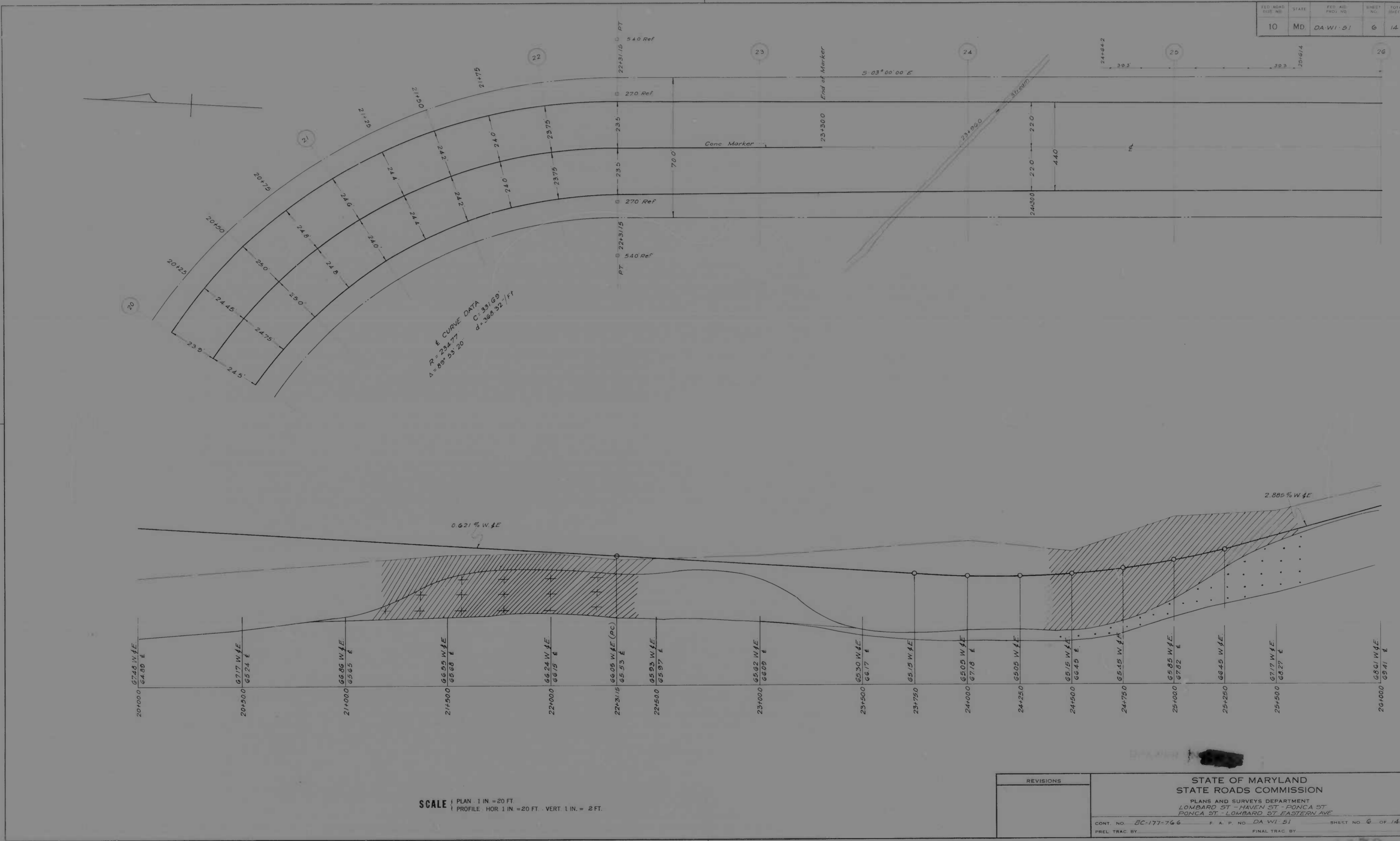
REVISIONS

STATE OF MARYLAND
STATE ROADS COMMISSION
PLANS AND SURVEYS DEPARTMENT
LOMBARD ST - HAVEN ST - PONCA ST
PONCA ST - LOMBARD ST - EASTERN AVE

CONTRACT NO. BC-177-766 F.A. PROJ. NO. DA W1-51 SHEET NO. 5 OF 14
PREL. TRAC. BY: FINAL TRAC. BY:

1173

FED. ROAD DIST. NO.	STATE	FED. PROJ. NO.	SHEET NO.	TOTAL SHEETS
10	MD	DA W 51	6	14



MICROFILMED ON APERTURE CARDS

SCALE | PLAN 1 IN = 20 FT.
 | PROFILE HOR 1 IN = 20 FT. VERT 1 IN = 2 FT.

REVISIONS	STATE OF MARYLAND STATE ROADS COMMISSION PLANS AND SURVEYS DEPARTMENT LOMBARD ST - HAVEN ST - PONCA ST PONCA ST - LOMBARD ST - EASTERN AVE
CONT. NO. DC-177-766	F. & P. NO. DA W 51
PREL. TRAC. BY	FINAL TRAC. BY
	SHEET NO. 6 OF 14

FED. ROAD DIST. NO.	STATE	PROJ. NO.	SHEET NO.	TOTAL SHEETS
10	MD	DA WI 51	7	14



SCALE | PLAN 1 IN = 20 FT.
 | PROFILE HOR 1 IN = 20 FT. VERT 1 IN = 2 FT.

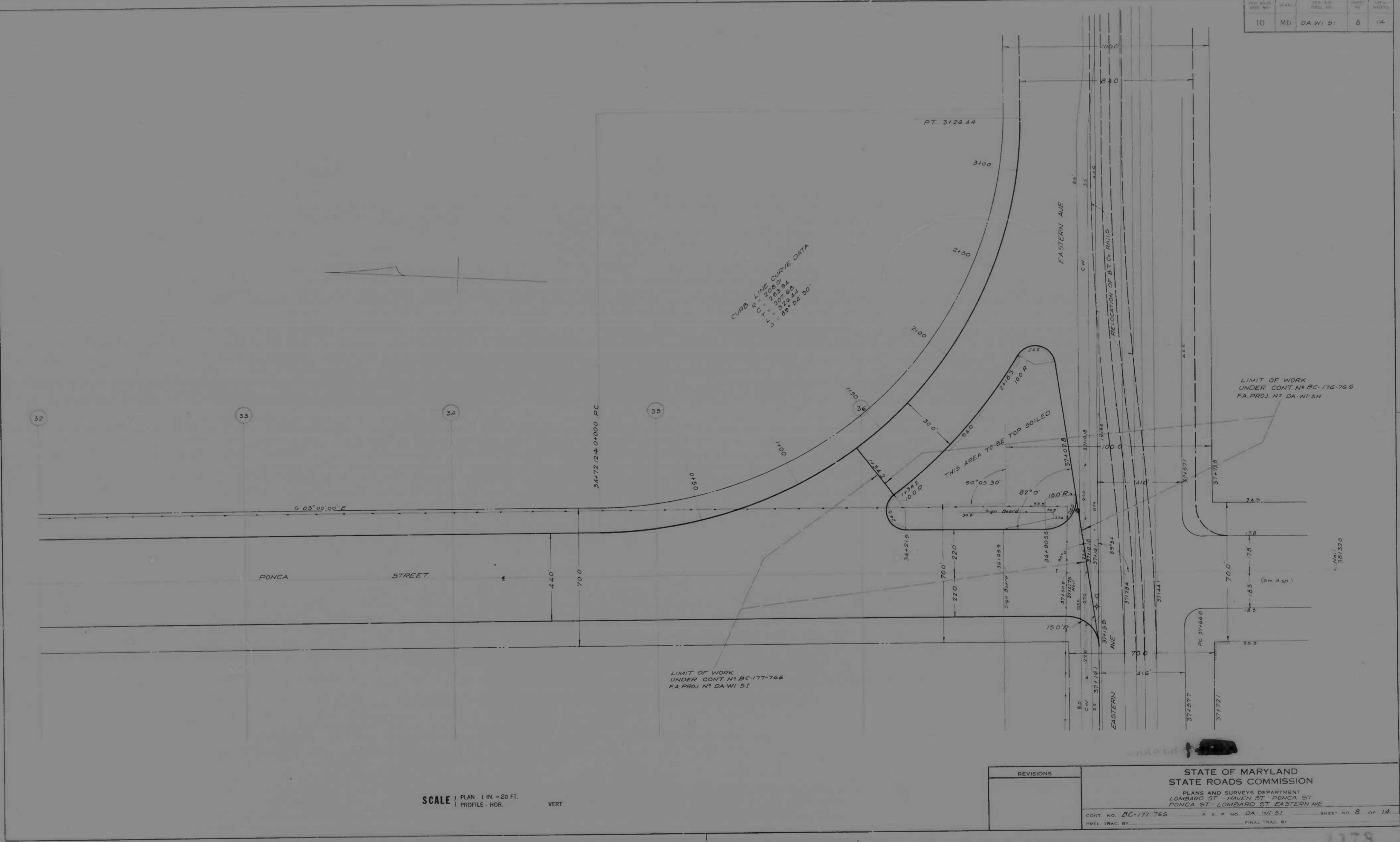
REVISIONS

STATE OF MARYLAND
 STATE ROADS COMMISSION
 PLANS AND SURVEYS DEPARTMENT
 LOMBARD ST - HAVEN ST - PONCA ST
 PONCA ST - LOMBARD ST - EASTERN AVE
 CONT. NO. 5C 177-766 P. & F. NO. DA WI 51 SHEET NO. 7 OF 14
 PREL. TRAC BY _____ FINAL TRAC BY _____

MICROFILMED
ON
APERTURE CARDS

1178

PROJ. NO.	STATE	DES. NO.	SHEET NO.	TOTAL SHEETS
10	MD	DA WI 51	8	14



NO.	REVISIONS

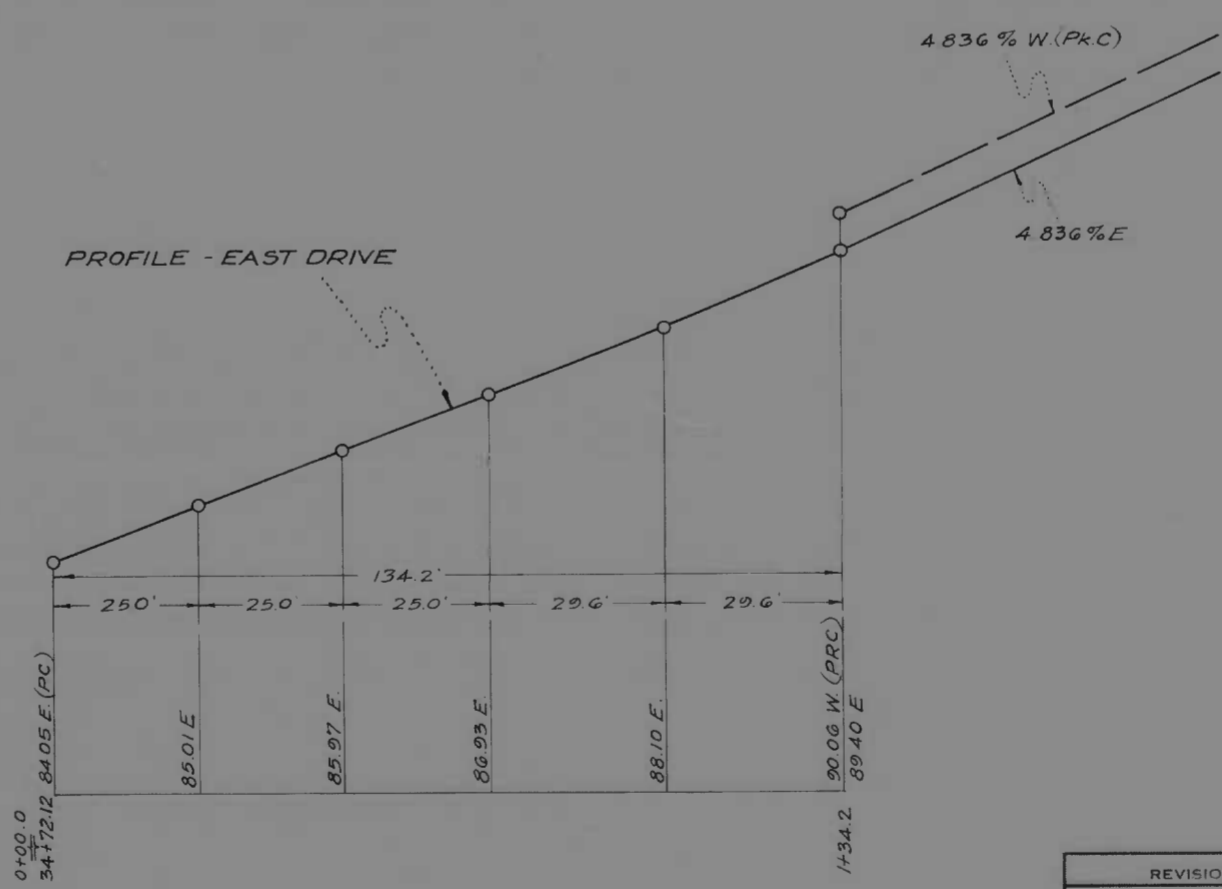
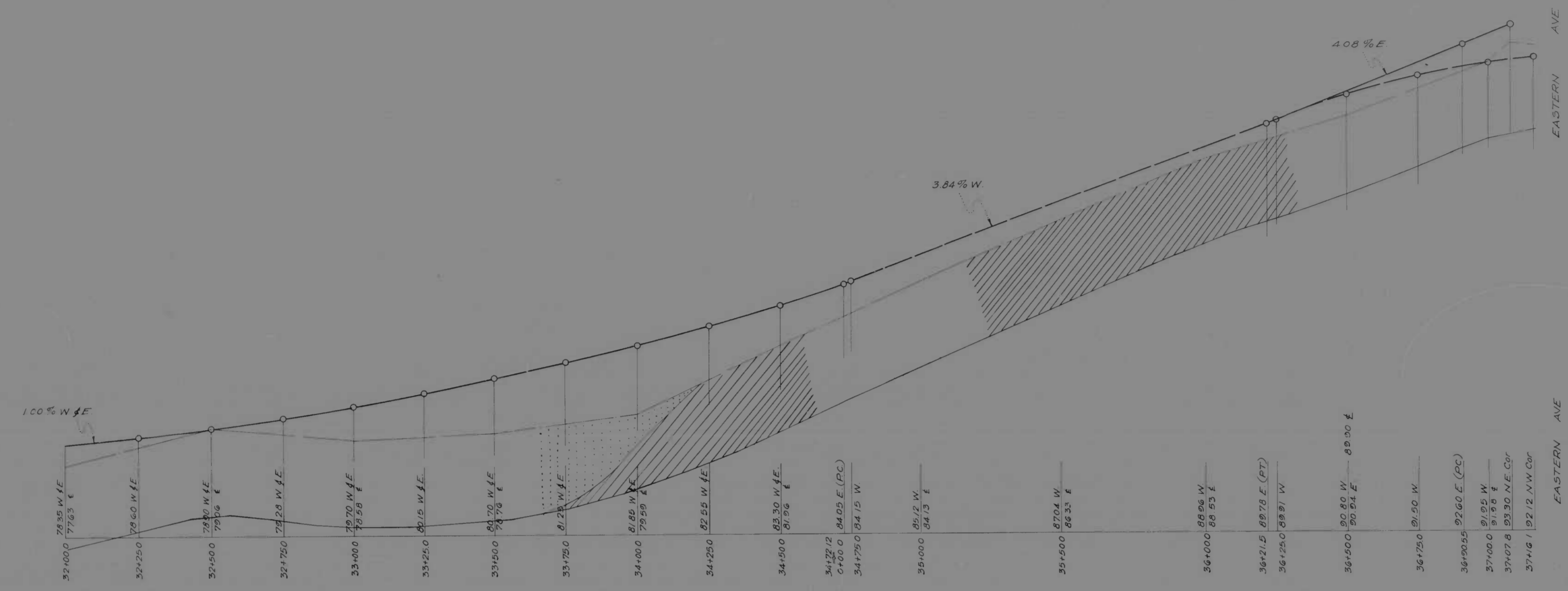
STATE OF MARYLAND
 STATE ROADS COMMISSION
 PLANS AND SURVEYS DEPARTMENT
 LOMBARD ST - HAVEN ST - PONCA ST
 PONCA ST - LOMBARD ST - EASTERN AVE

CONT. NO. BC-177-766 P. A. P. NO. DA WI 51 SHEET NO. 8 OF 14
 PREL. TRAC. BY: FINAL TRAC. BY:

MICROFILMED ON APERTURE CARDS

1178

FILE NO.	DATE	DESIGNER	SHEET NO.	TOTAL SHEETS
10	MD	DA WJ-51	9	14



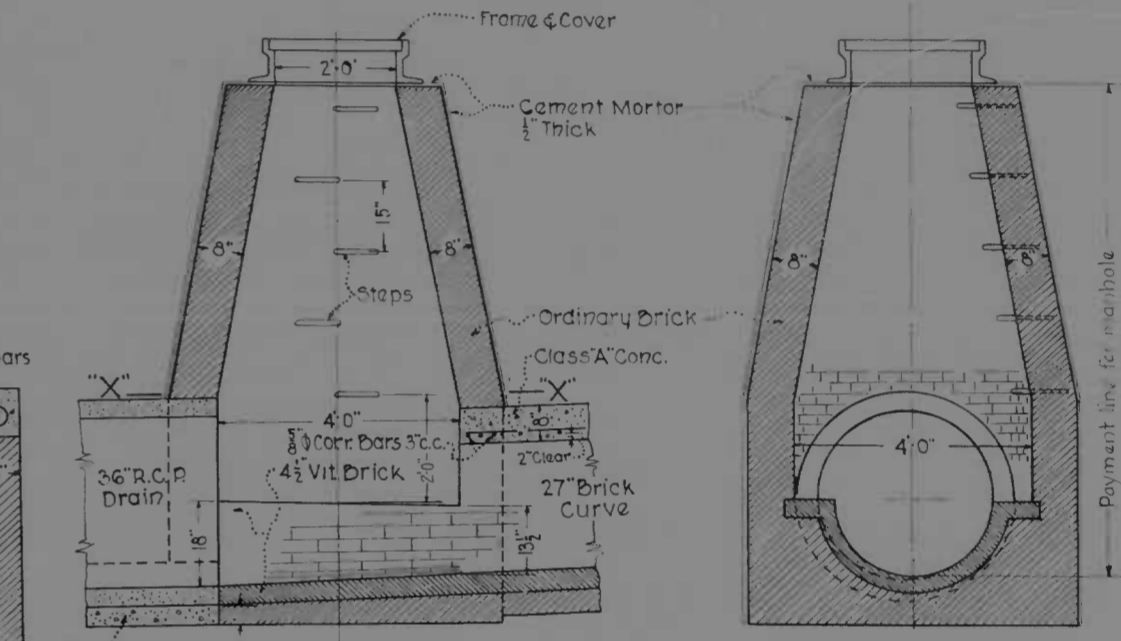
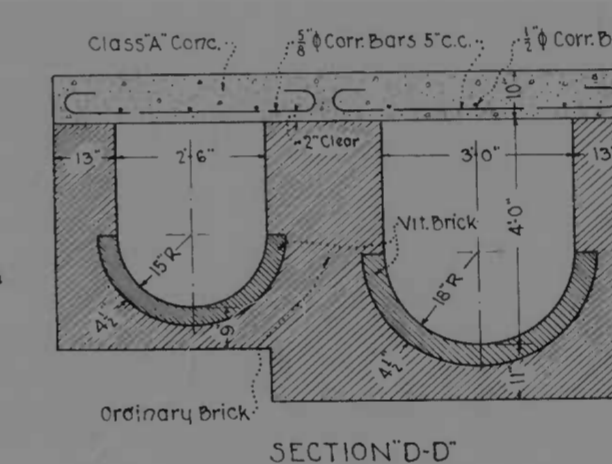
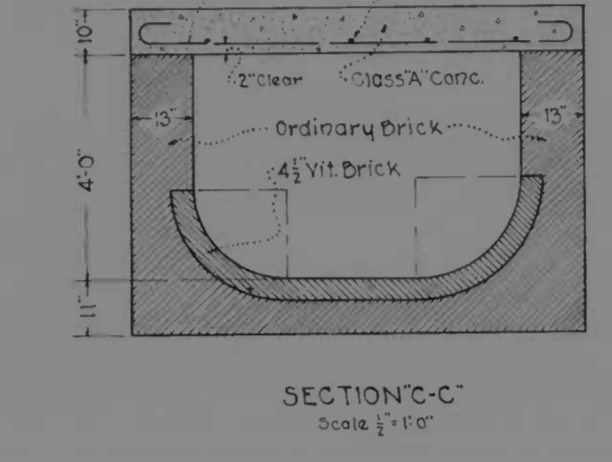
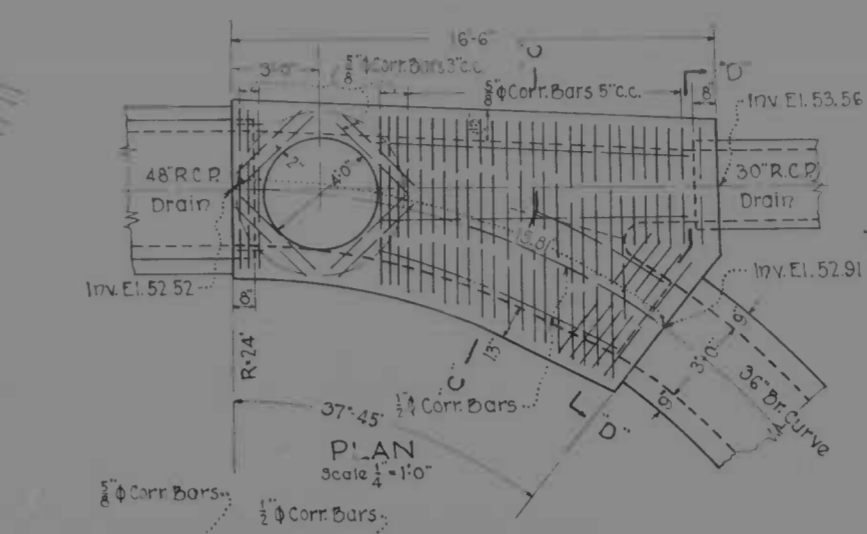
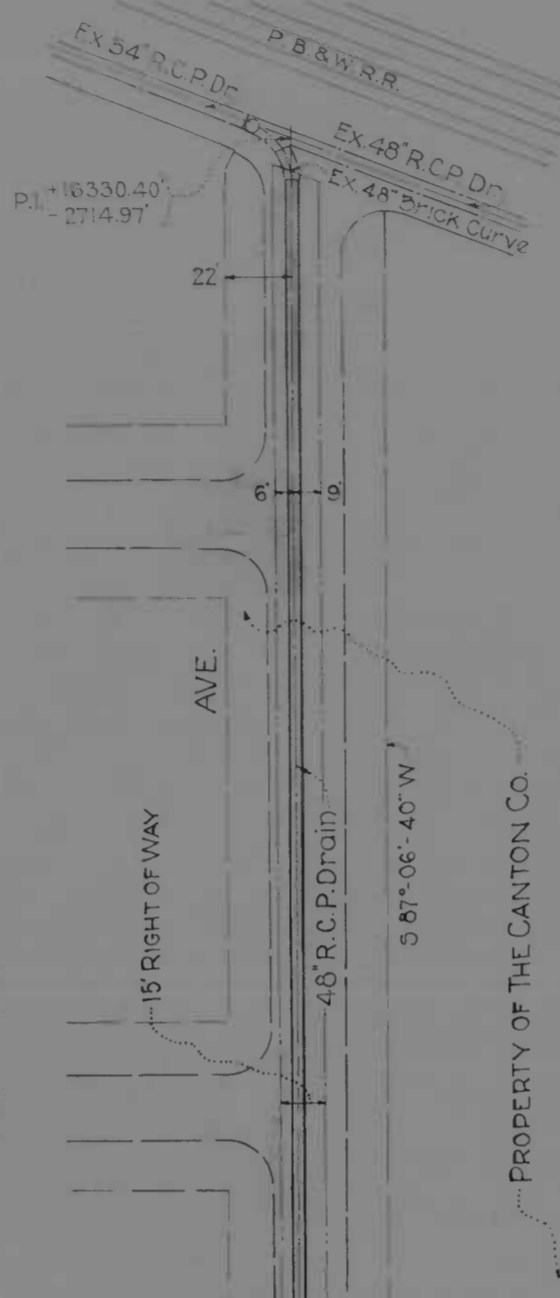
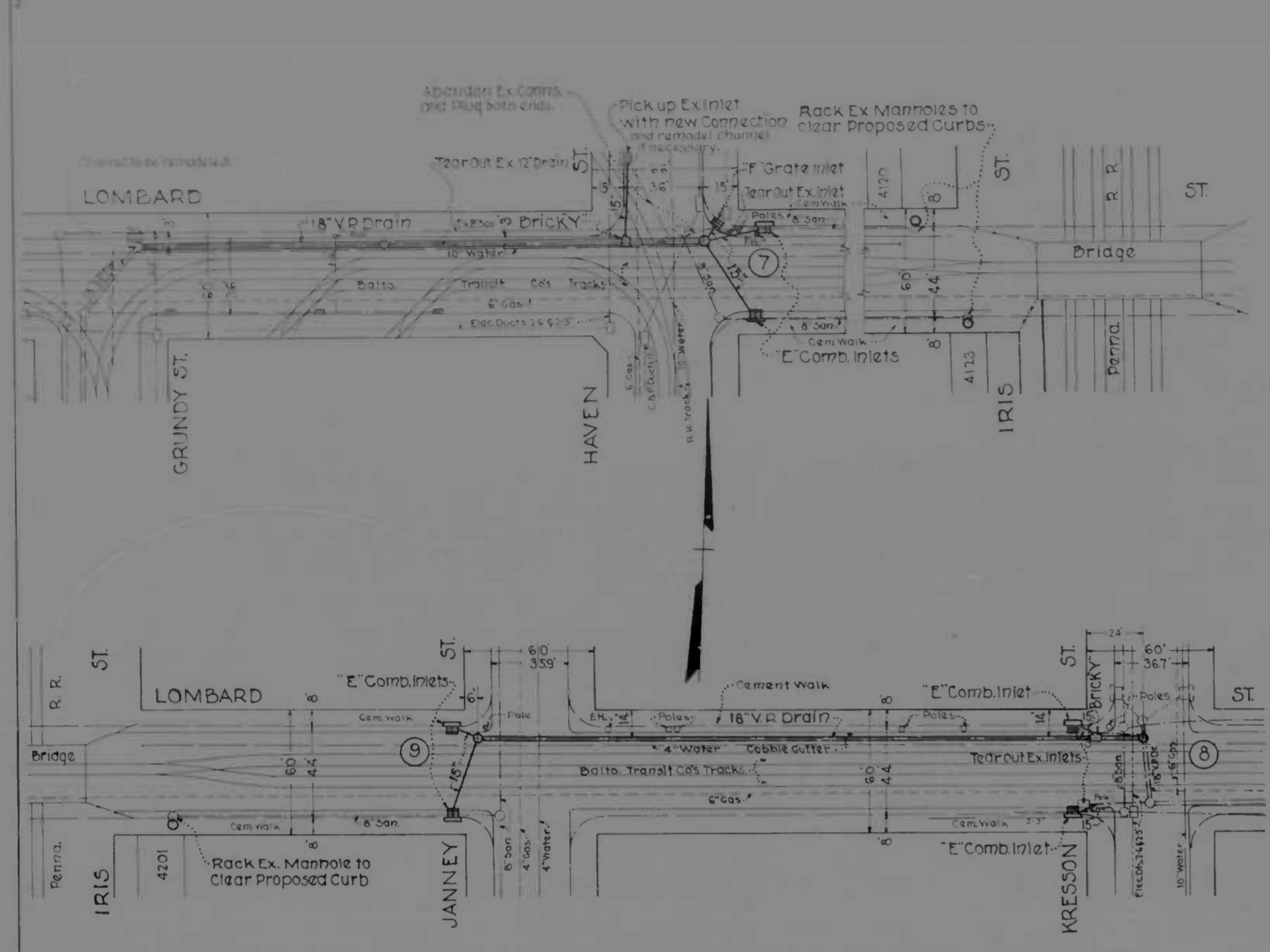
MICROFILMED ON APERTURE CARDS

SCALE | PLAN 1 IN. | PROFILE - FOR 1 IN. = 20 FT. VERT. 1 IN. = 2 FT.

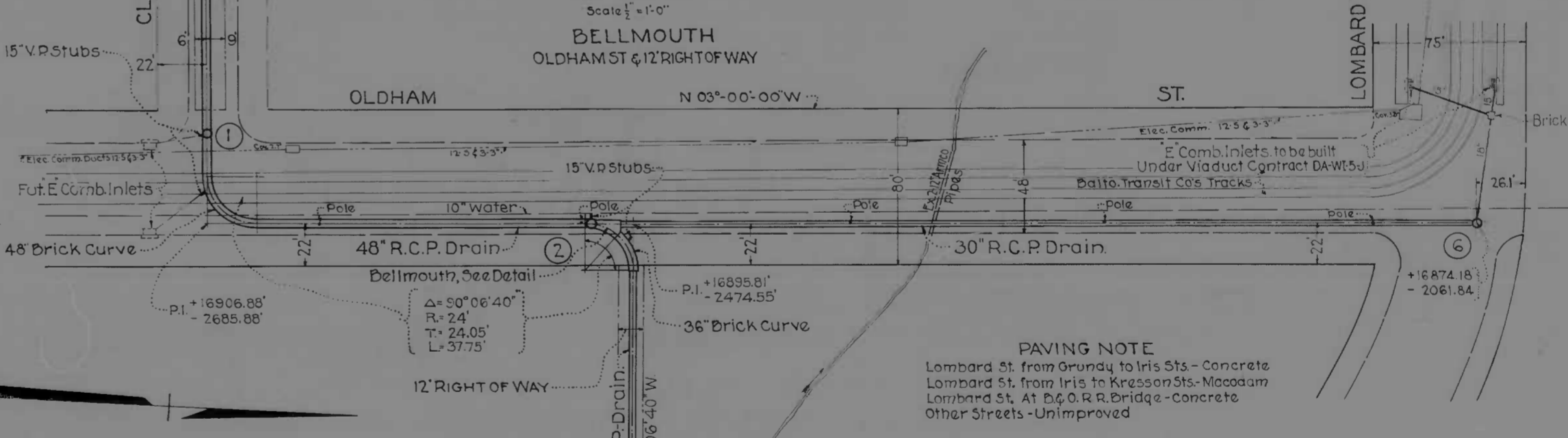
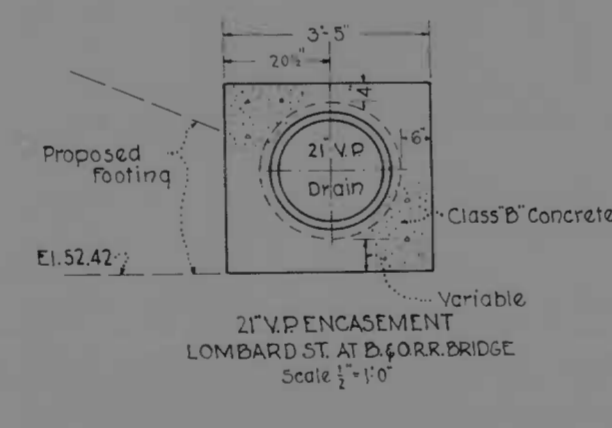
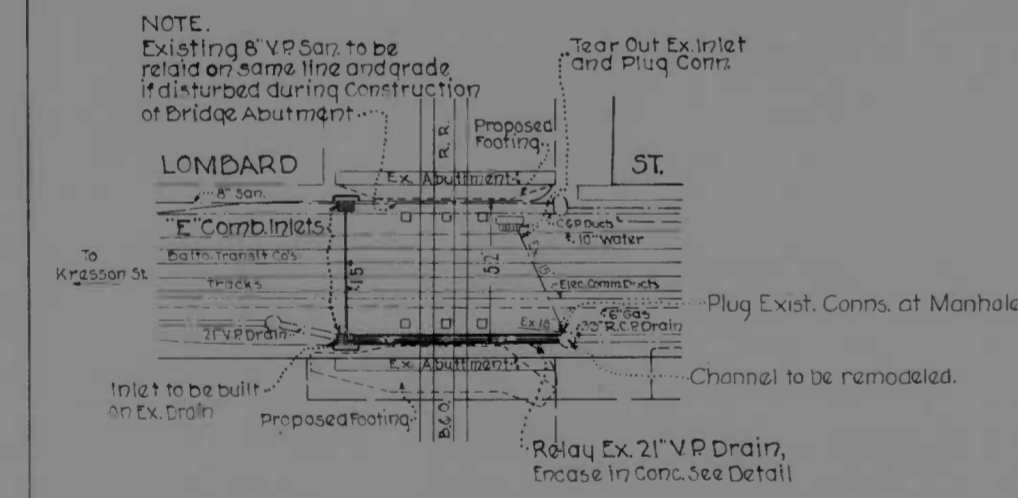
REVISIONS

STATE OF MARYLAND
STATE ROADS COMMISSION
PLANS AND SURVEYS DEPARTMENT
LOMBARD ST - HAVEN ST - PONCA ST
PONCA ST - LOMBARD ST - EASTERN AVE
CONT NO. DC-177-766 F.A.P. NO. DA WJ-51 SHEET NO. 9 OF 14
PREL. TRAC. BY: FINAL TRAC. BY:

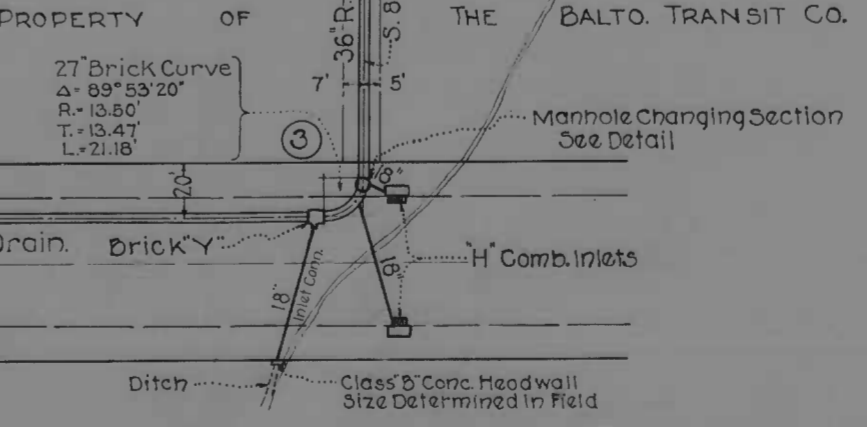
50350-0739



10 MD DR-WI-51 10 14



NOTE
Obstructions are shown on this drawing for the convenience of the contractor only, and the State Roads Commission does not guarantee the correctness or completeness of the information given. The contractor must verify all such information to his own satisfaction.



PAVING NOTE
Lombard St. from Grundy to Iris Sts - Concrete
Lombard St. from Iris to Kresson Sts - Macadam
Lombard St. At D.C. & R.R. Bridge - Concrete
Other Streets - Unimproved

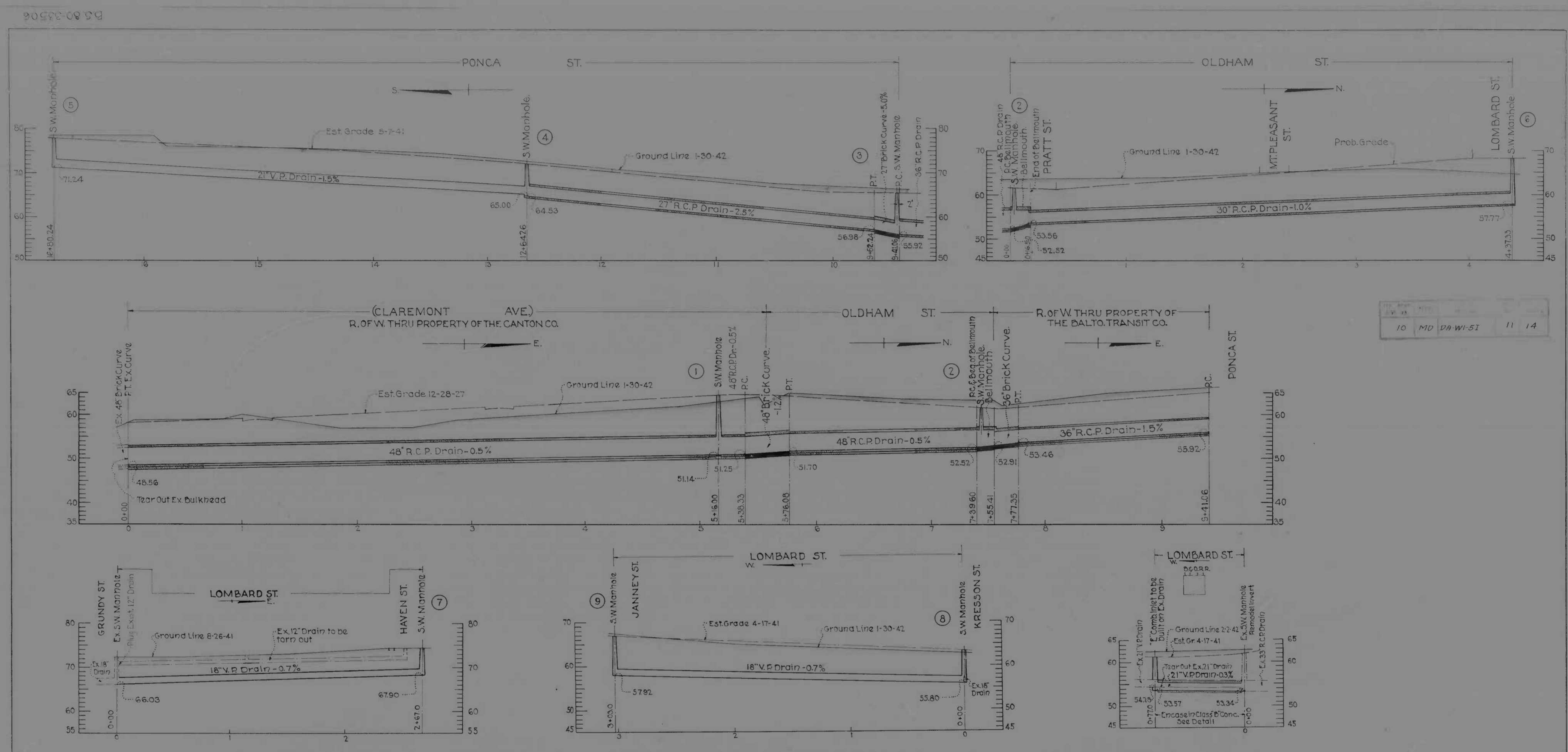
Serial Numbers of Storm Water Manholes shown thus: ⑤
BC-177-766
LOMBARD ST. - HAVEN ST TO PONCA ST.
PONCA ST. - LOMBARD ST TO EASTERN AVE
PLAN & DETAILS
SHEET No 10 of 14

DRAWN BY: [Signature]
CHECKED BY: [Signature]

PROPERTY OF THE MAYOR AND CITY COUNCIL

1173

50350-33505



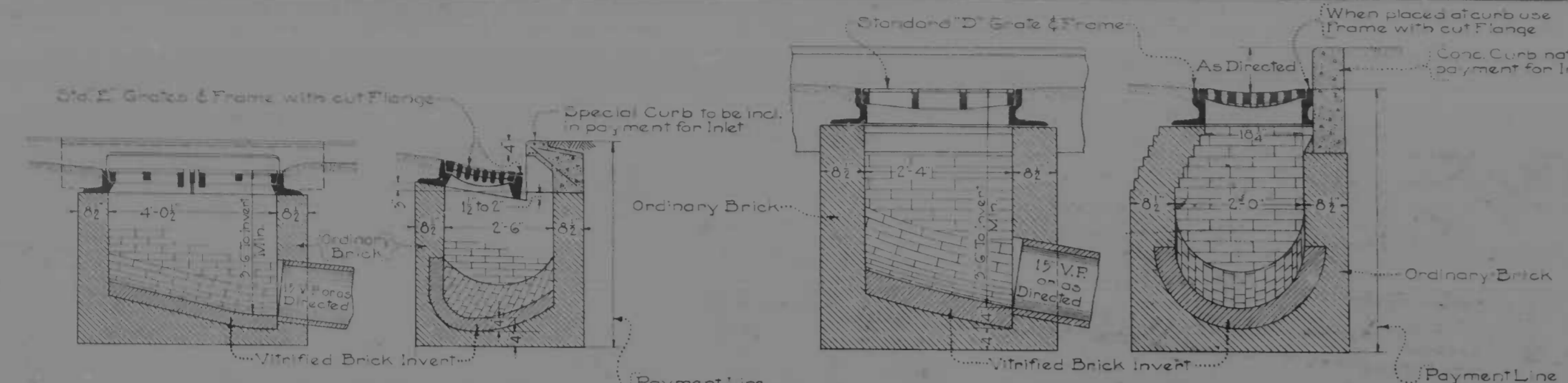
10	MD	DA-WI-51	11	14
----	----	----------	----	----

Serial Numbers of Storm Water Manholes shown thus: (5)

BC-177-766
 LOMBARD ST. - HAVEN ST TO PONCA ST.
 PONCA ST. - LOMBARD ST TO EASTERN AVE.
 PROFILES
 SHEET NO 11 of 14

MICROFILMED ON APERTURE CARDS

DRAWN BY: W.B. Johnston
 TRACED BY: E. Sheppard, W. Hester
 CHECKED BY: G. H. Kelly

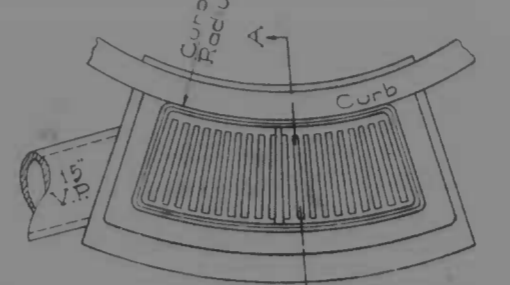


CLASS E COMBINATION INLET
Scale: 1/2" = 1'-0"

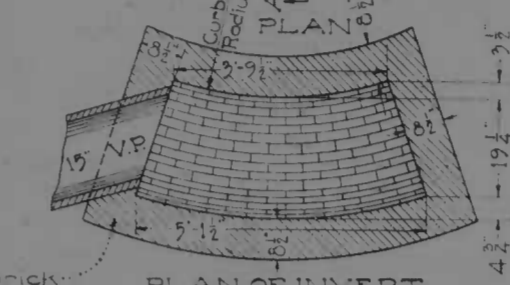
CLASS D INLET
Scale: 1/2" = 1'-0"

Note: Inverts to slope at least 2 per foot toward outlet

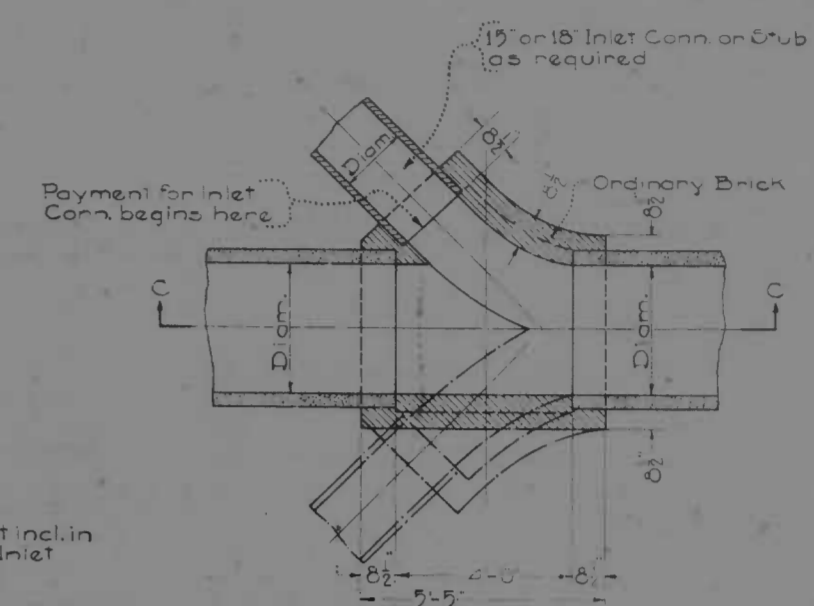
Note: Direction of Inlet Connections will vary to suit conditions



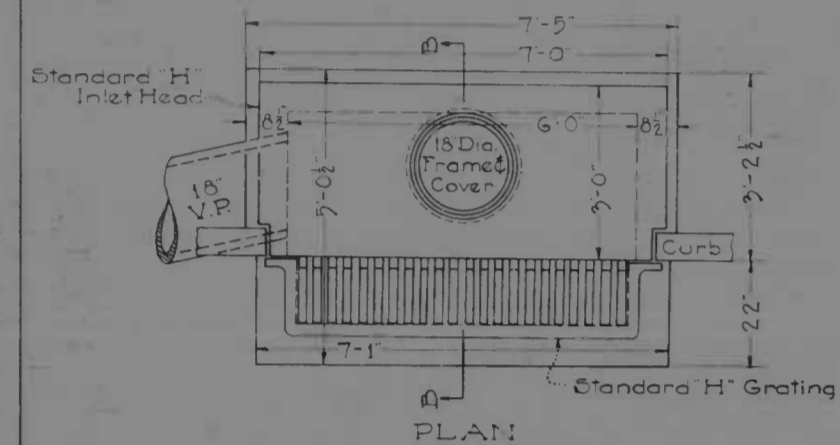
PLAN OF CURB



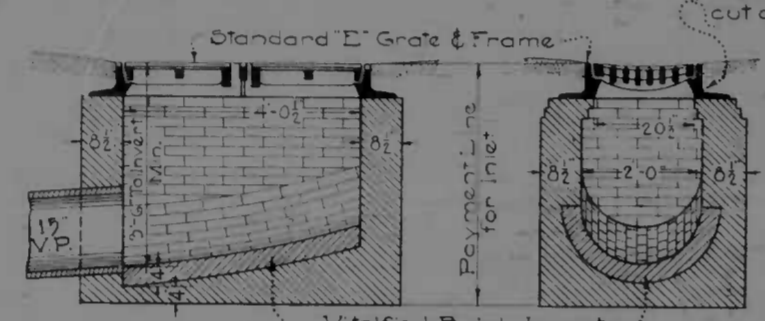
PLAN OF INVERT



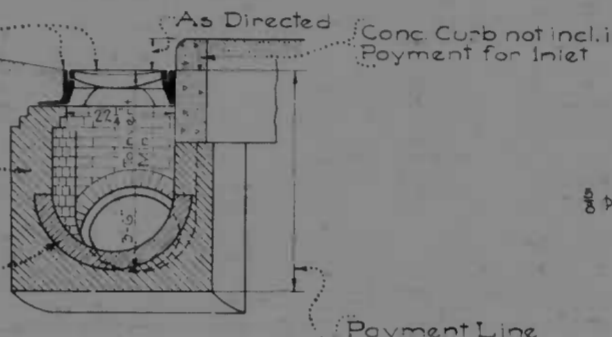
SECTIONAL PLAN



PLAN

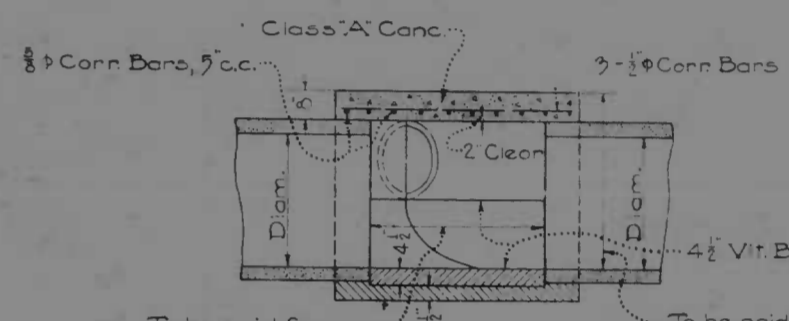


CLASS E INLET
Scale: 1/2" = 1'-0"



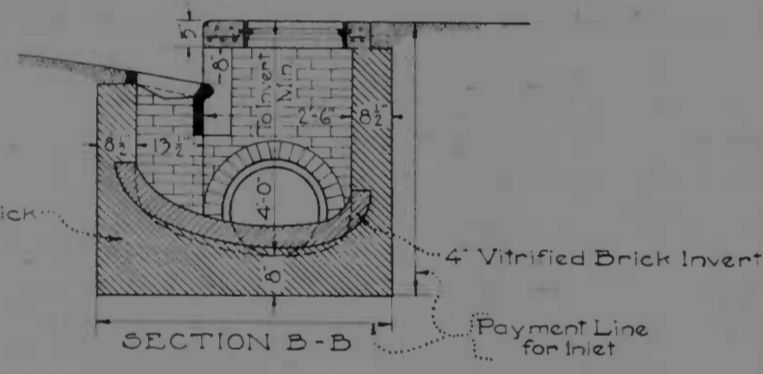
SECTION A-A

CLASS F INLET
Scale: 1/2" = 1'-0"

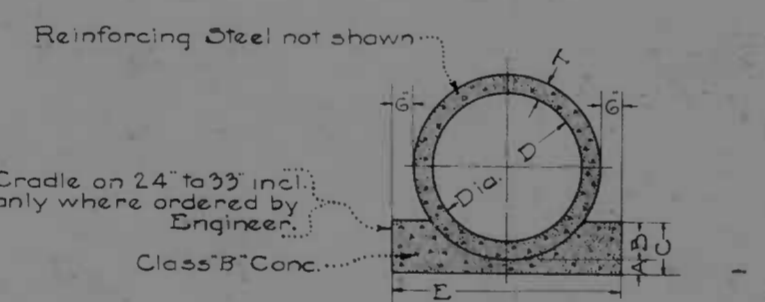


SECTION C-C

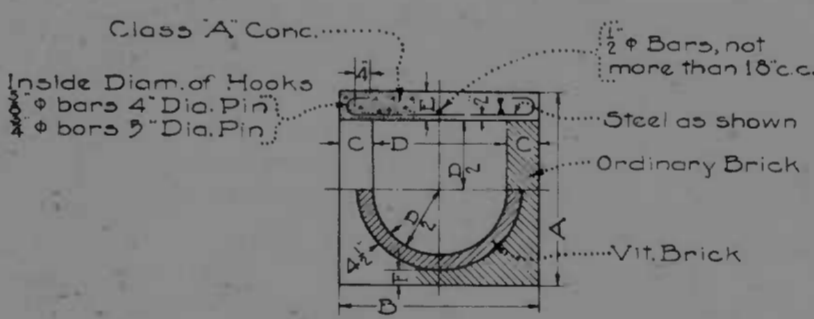
DOUBLE OR SINGLE BRICK Y FOR INLET CONN.
Scale: 1/8" = 1'-0"



CLASS H COMBINATION INLET
Scale: 1/2" = 1'-0"



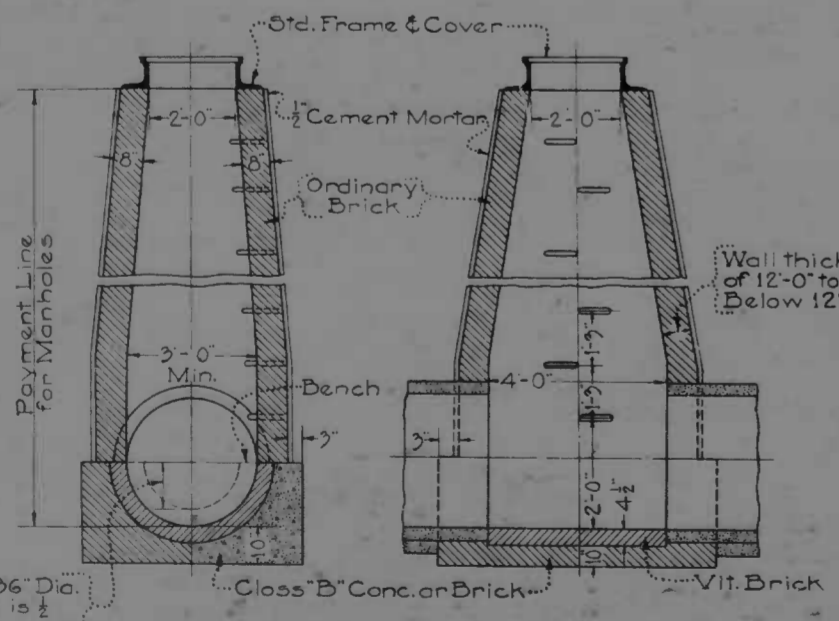
CONC. PIPE WITH CRADLE



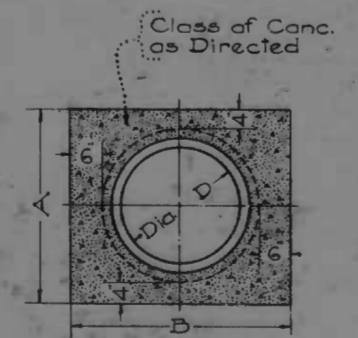
ST'D. BRICK CURVE

DIMENSIONS					
D	A	B	C	Rate	T
inches	inches	inches	inches	inches	inches
24	3	6	9	3-6	3
27	3	7	10	3-10	3 1/2
30	4	7 1/2	11 1/2	4-1	3 1/2
33	4	8	12	4-7	4
36	4	9	13	4-8	4
42	4	10 1/2	14 1/2	5-3	4 1/2
48	4	12	16	5-10	5
54	4	13 1/2	17 1/2	6-5	5 1/2

DIMENSIONS					
Size	A	B	C	E	F
inches	inches	inches	inches	inches	inches
24"	3'-3"	3'-6"	3'	8"	4 1/2"
27"	3'-6"	3'-9"	3'	8"	4 1/2"
30"	3'-9"	4'-0"	3'	8"	4 1/2"
33"	4'-2"	4'-3"	3'	8"	4 1/2"
36"	4'-5"	4'-6"	3'	8"	4 1/2"
42"	5'-3"	5'-8"	3'	10"	6 1/2"
48"	5'-9"	6'-2"	3'	10"	6 1/2"
54"	6'-3"	6'-8"	3'	10"	6 1/2"



STANDARD S.W. MANHOLE
Scale: 1/8" = 1'-0"



VIT. PIPE ENCASEMENT

DIMENSIONS		
D	A	B
8"	1'-8"	2'-0"
10"	1'-10 1/2"	2'-2 1/2"
12"	2'-1"	2'-5"
15"	2'-5"	2'-9"
18"	2'-9"	3'-1"
21"	3'-1"	3'-5"

For Pipe less than 36" Dia. the height of Bench is 4" internal dia. of Pipe

BC-177-766
 LOMBARD ST. - HAVEN ST TO PONCA ST.
 PONCA ST. - LOMBARD ST TO EASTERN AVE
 DETAILS
 SHEET #12 of 14
 DRAWN 1.688
 1175

MANUFACTURED BY APERTURE CARDS

DRAWN BY
 TRACED BY
 CHECKED BY

