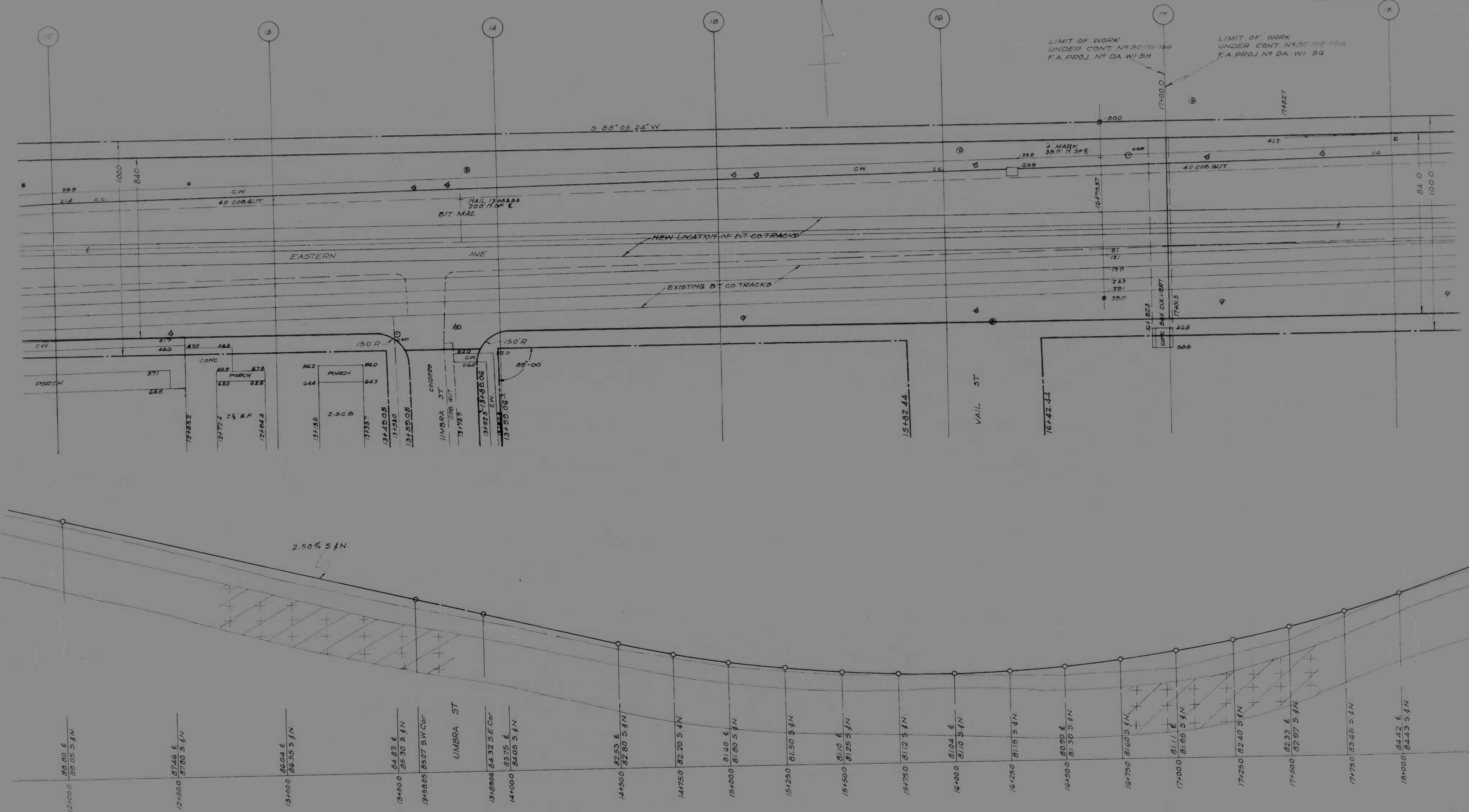


NO.	DATE	BY	CHKD	APP'D
10	MD DA WI 5H			

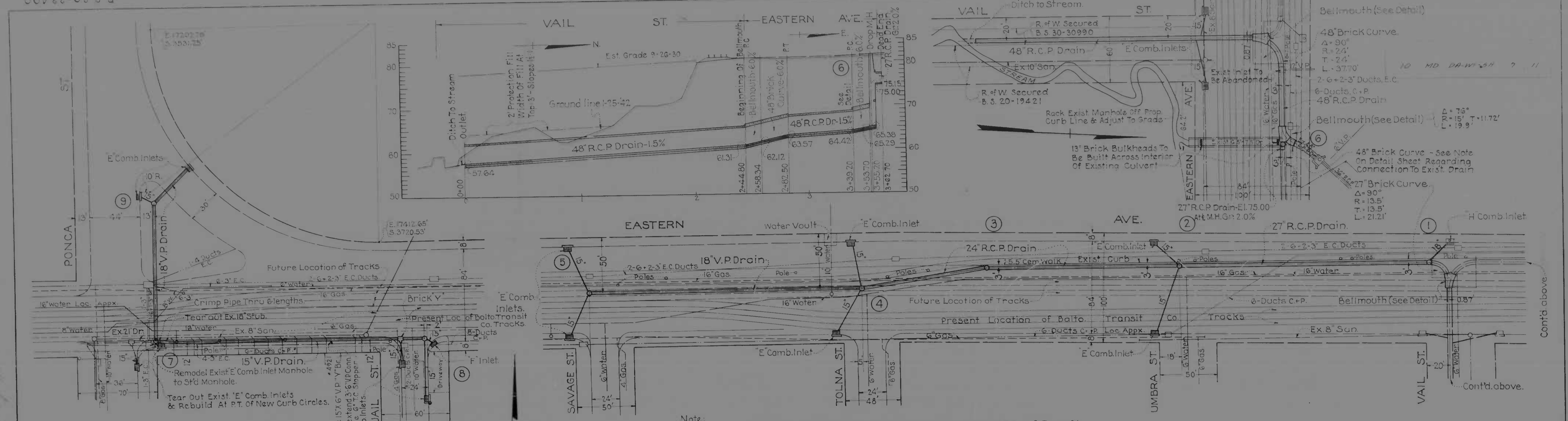


SCALE: PLAN - 1" = 20 FT. PROFILE - HOR 1" = 20 FT. VERT. 1" = 2 FT.

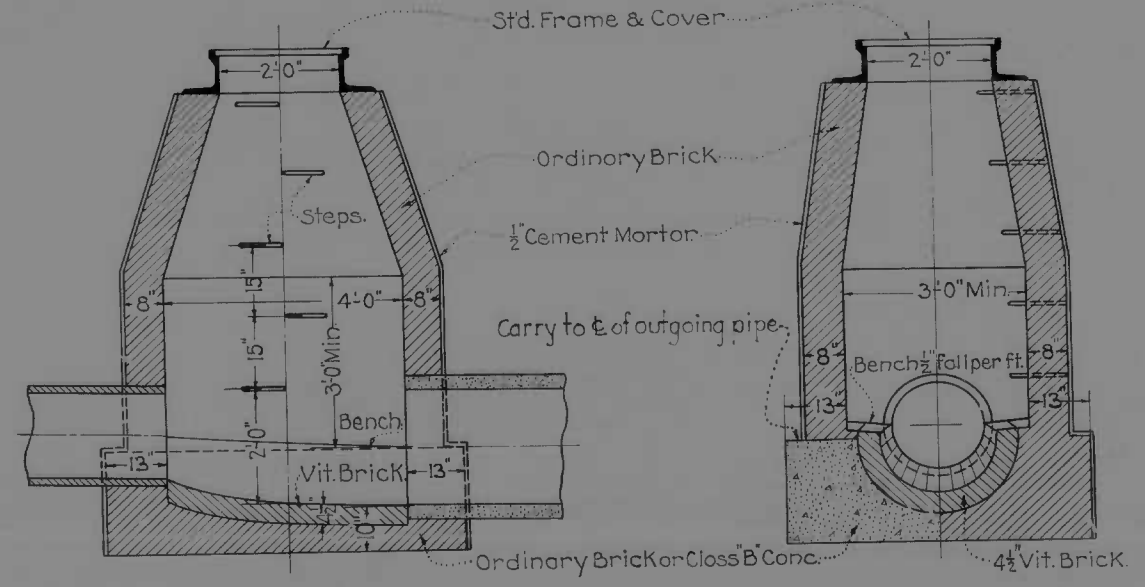
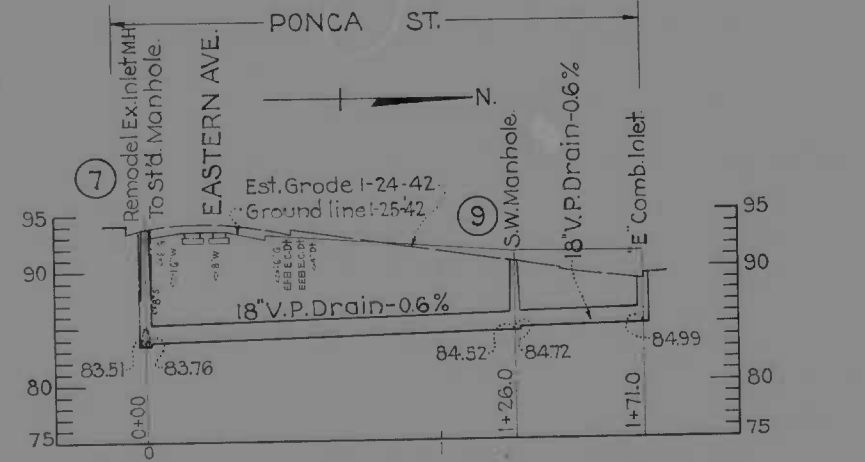
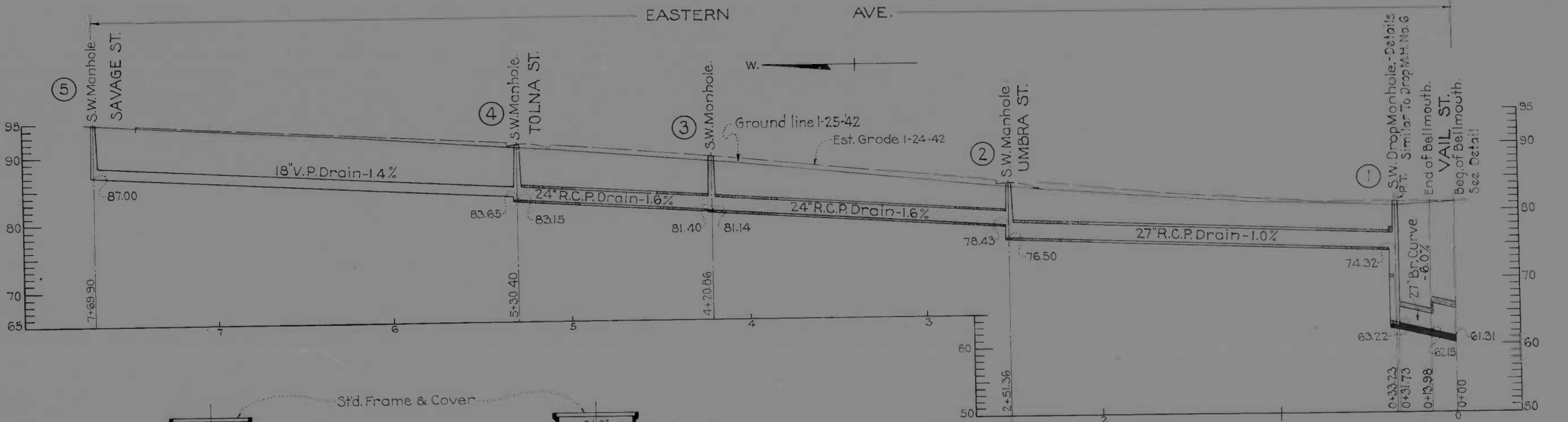
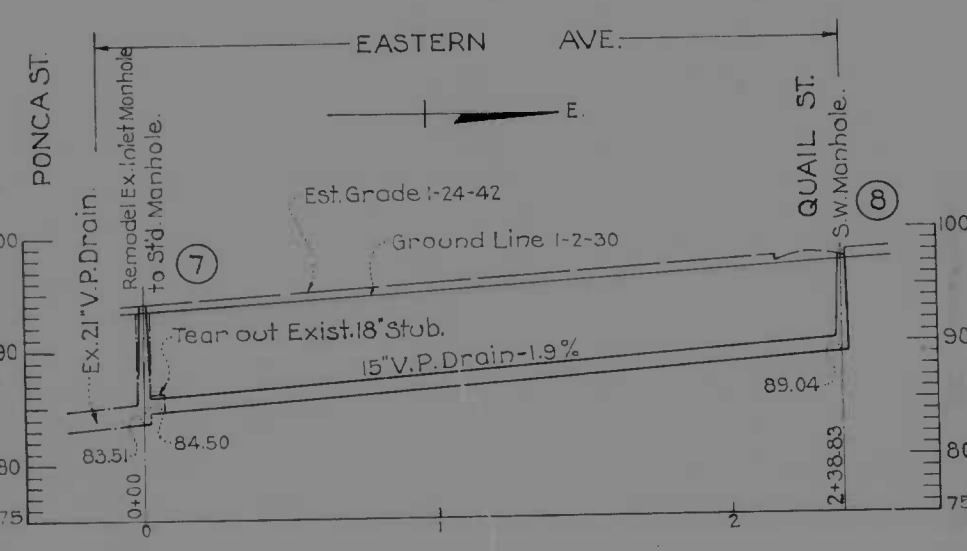
DESIGNED BY 588 EASTERN AVE - PONCA ST - 600' E TOLNA STREET
 P.A. PROJ. NO. DA WI 5H No. 6 of 11

WORKSHEET
 APERTURE CARDS

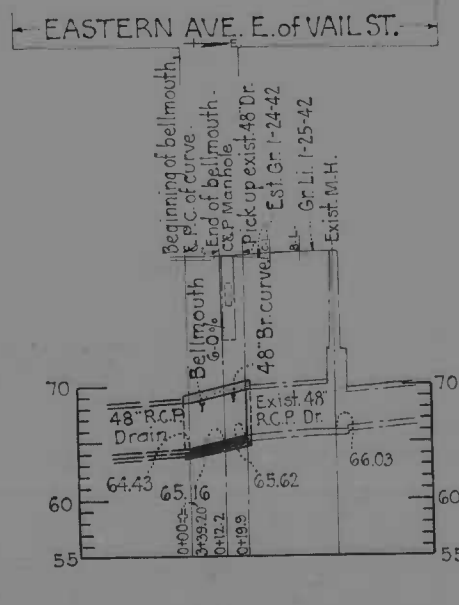
B.S. 80-33490



Note: All existing Sanitary Manholes in Eastern Ave. between the W.B.L. of Ponca St. and the E.B.L. of Vail St. are to be adjusted to the finished grade of Eastern Ave. by the Bureau of Sewers at the expense of the State Roads Commission.



STANDARD MANHOLE Scale: 2"=1'-0"



NOTE: Obstructions are shown on this drawing for the convenience of the Contractor only, and the State Roads Com. does not guarantee the correctness or completeness of the information given. The Contractor must verify all such information to his own satisfaction.

Serial Numbers of Manholes shown thus: (3)

BC-176-766
PART 2-DRAWING
EASTERN AVE - WEL. FLOW AT THE POINT OF TOLNA ST
PLAN AND PROFILE - TOLNA WATER MAIN
SHEET NO. 211

DRAWN BY [Signature]

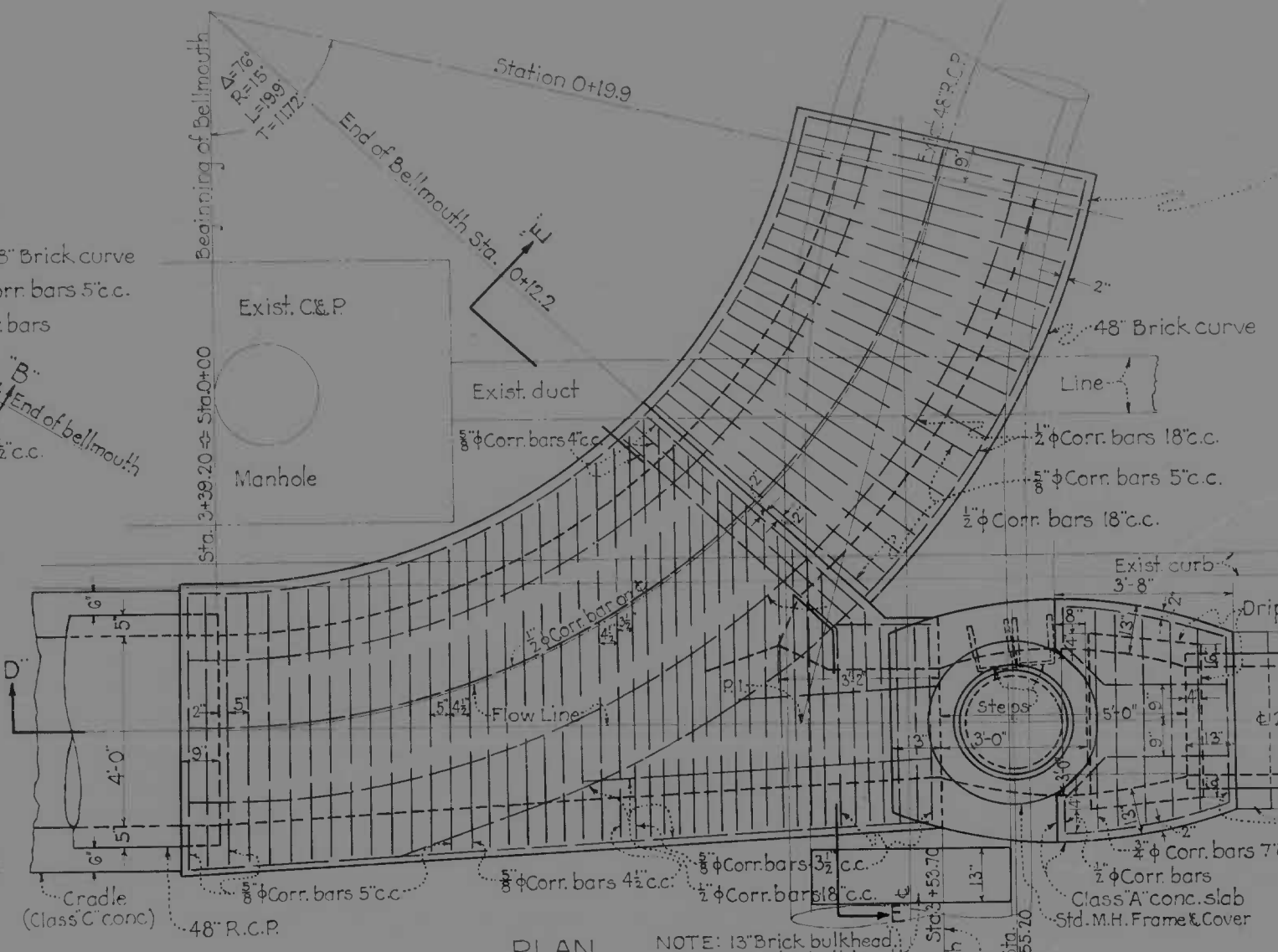
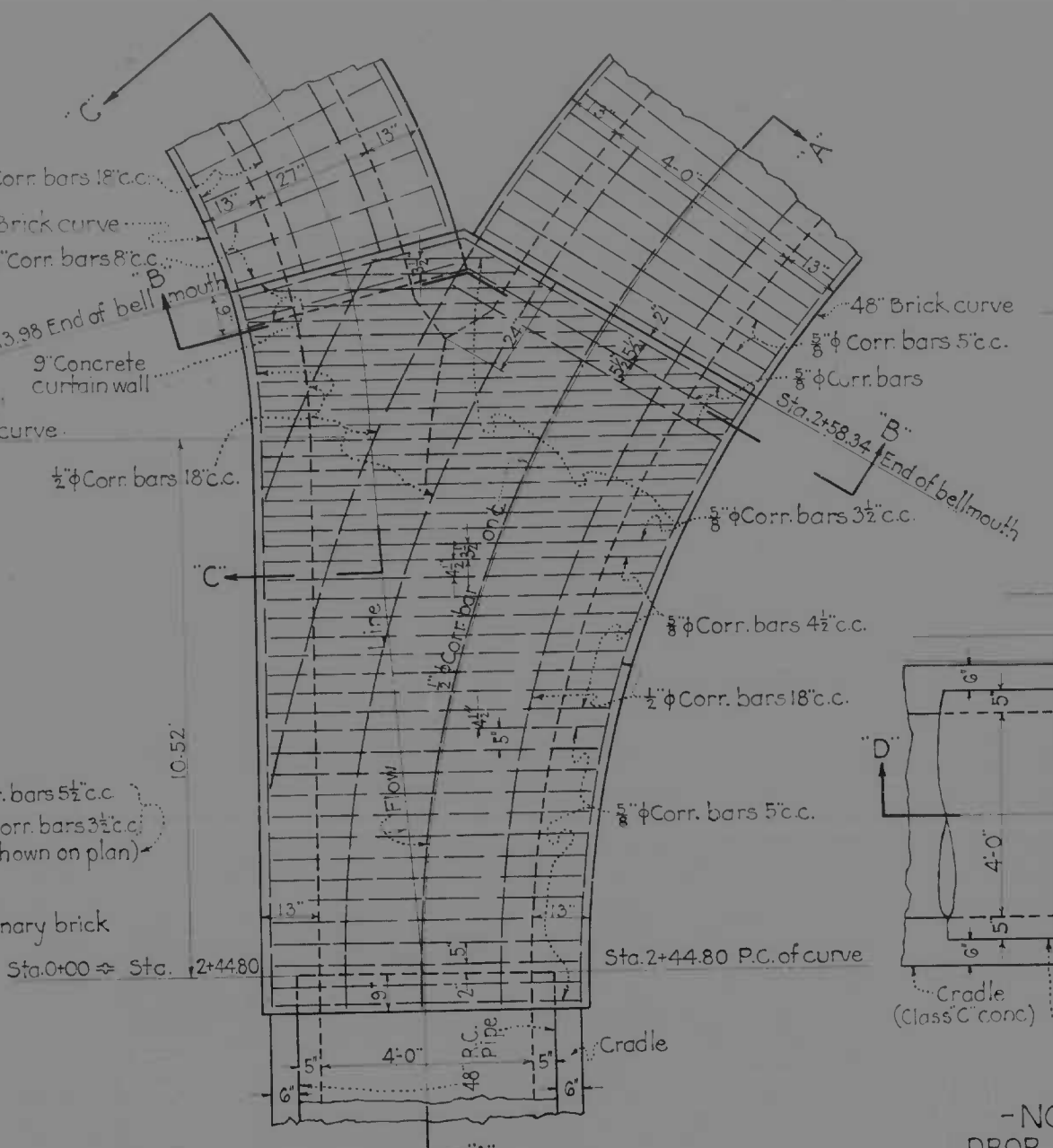
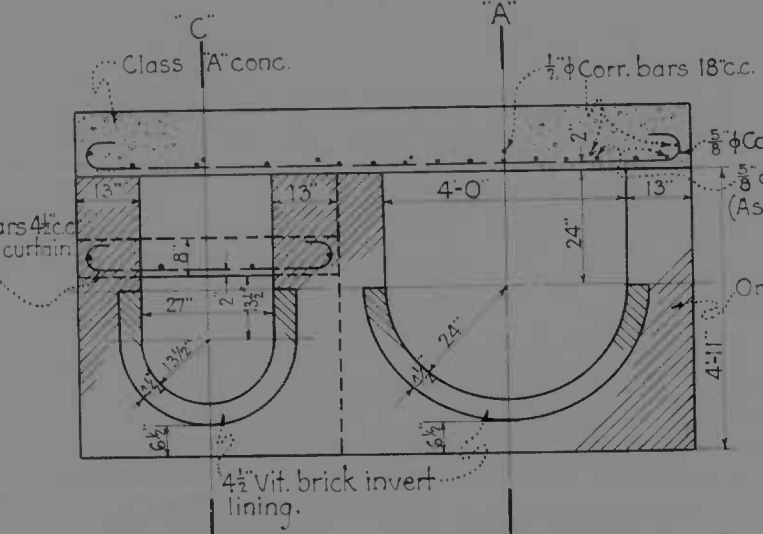
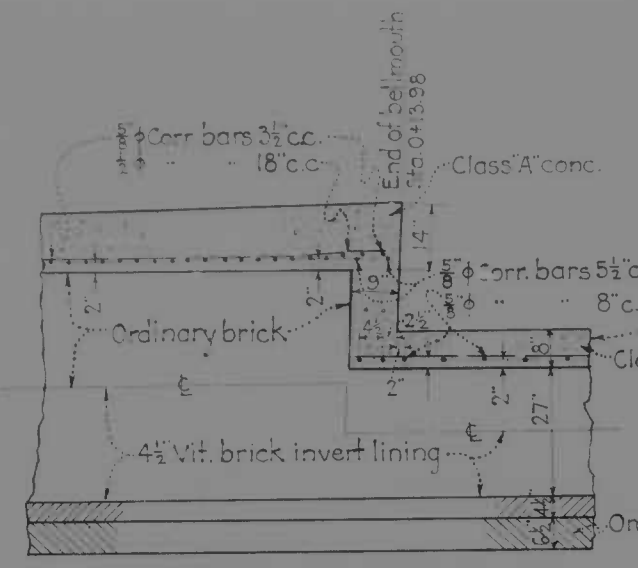
1179

MICROFILMED ON APERTURE CARDS

DRAWN BY B.E. SWALL
TRACED BY E. Stappard
CHECKED BY [Signature]

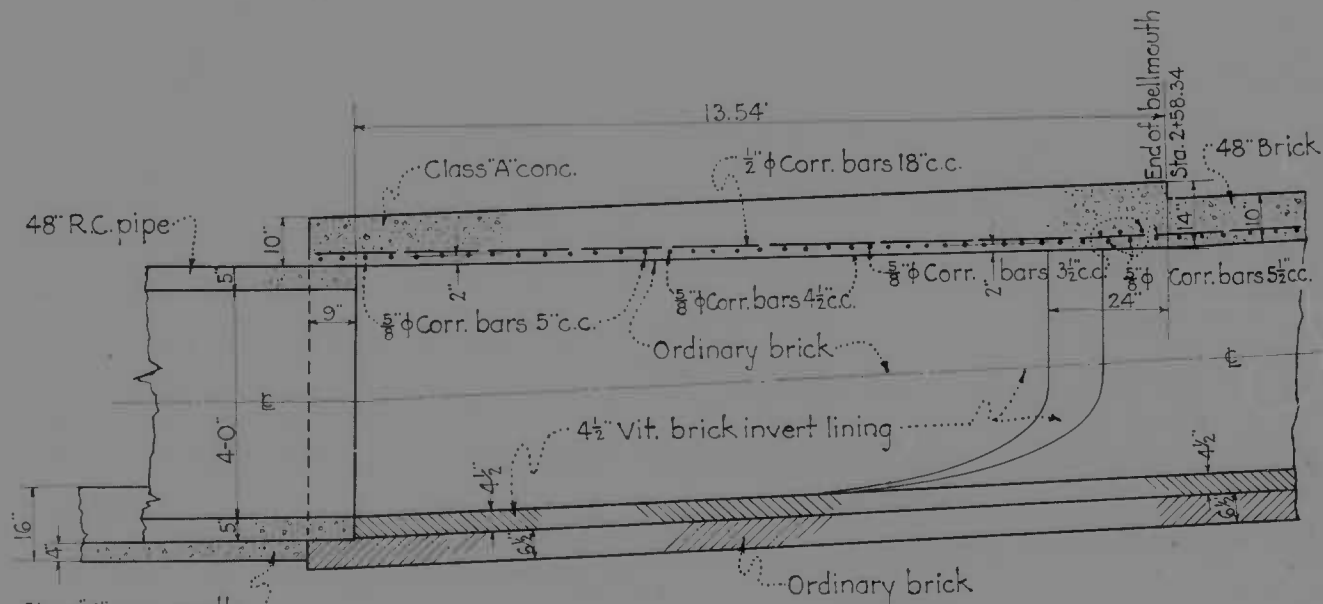
187-20-08-1019

10 112 00 41 51 11

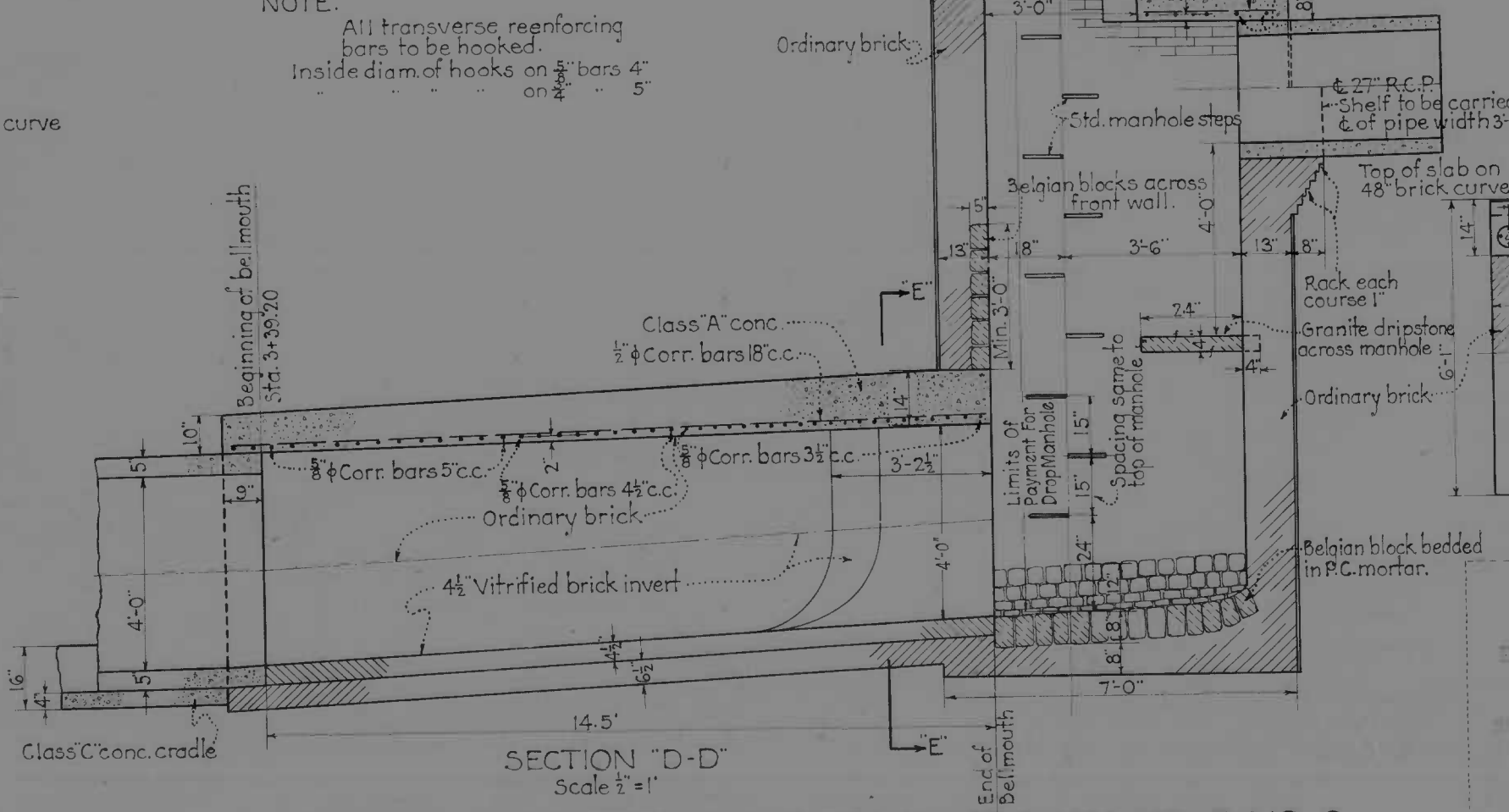


-NOTE-
DROP MANHOLE NO. 1
IS TYPICAL OF DROP MANHOLE
NO. 6

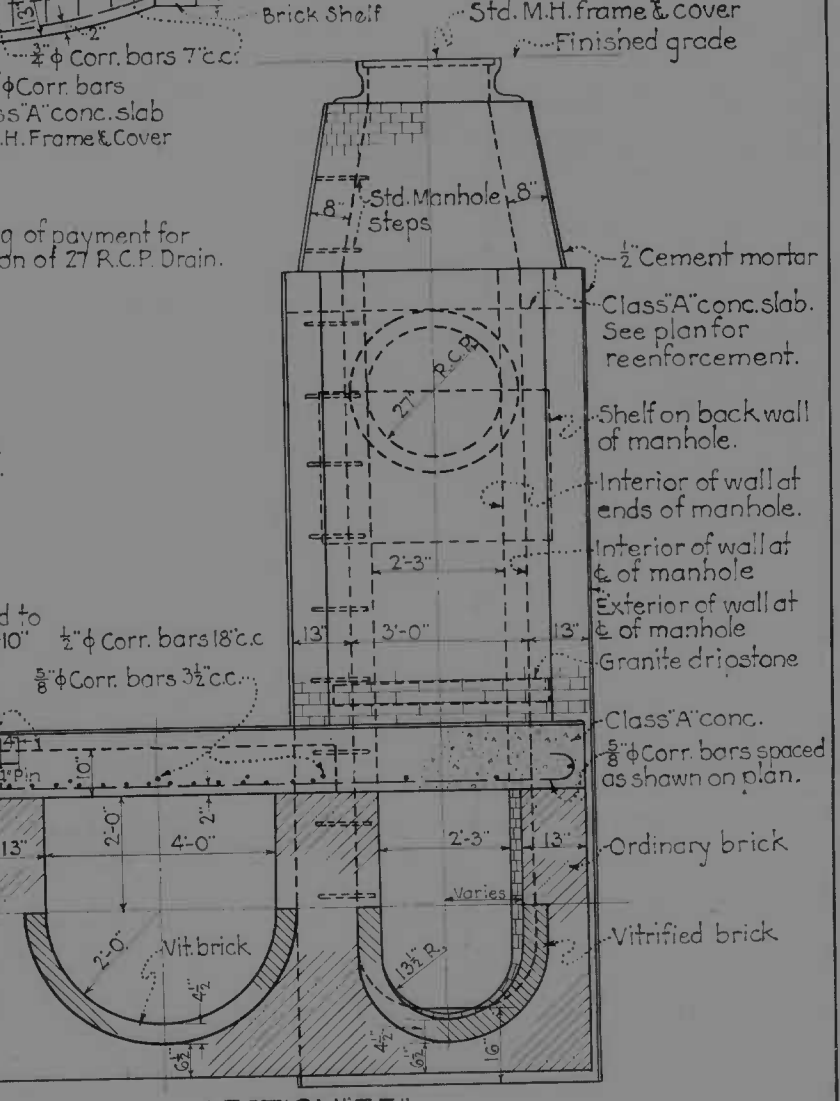
-NOTE-
Connection to exist drain to be made
in manner satisfactory to engineer.
Adjust grade of 48" brick curve to meet
invert of exist 48" R.C.P. at point of connection
if necessary.
The location & elevation shown for the
exist 48" R.C.P. is approx. and must be verified
in the field.
Location of bellmouth is to be determined
by conditions found in the field and is to be
placed in manner satisfactory to engineer.



DETAIL OF BELLMOUTH AT EASTERN AVE. & VAIL ST.



DETAIL OF BELLMOUTH IN EASTERN AVE. E. OF VAIL ST. & MANHOLE NO. 6



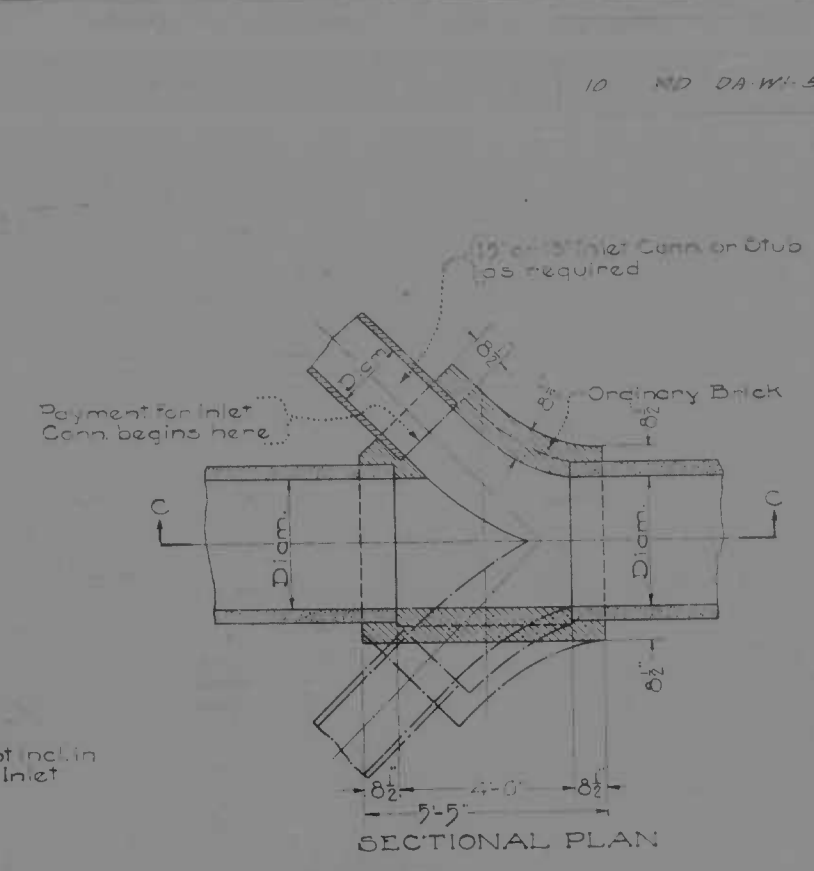
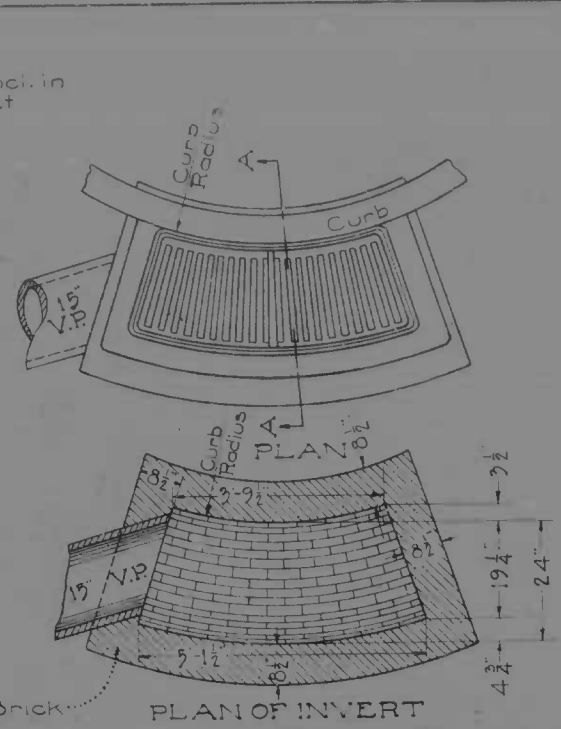
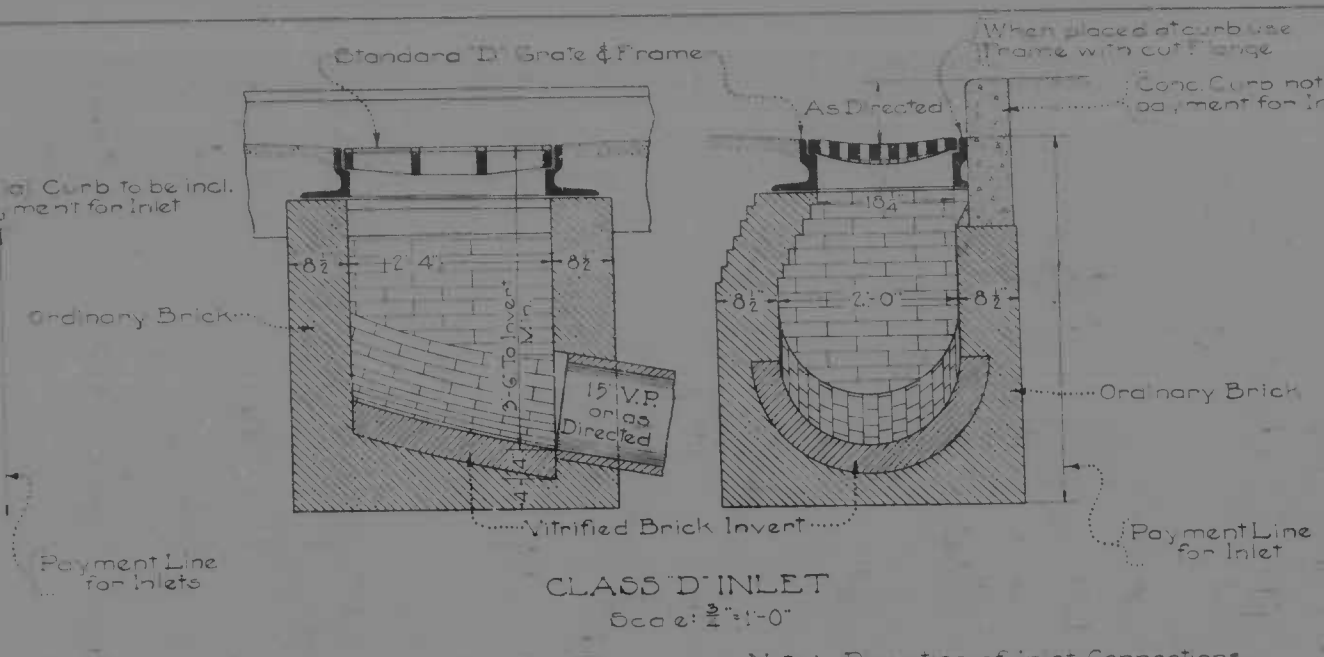
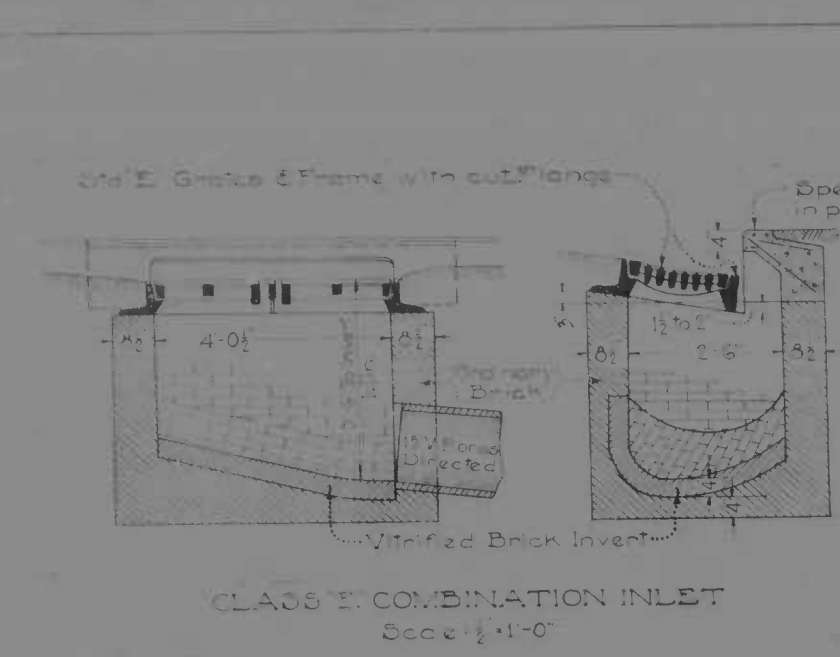
NOTE:
All transverse reinforcing
bars to be hooked.
Inside diam. of hooks on 2" bars 4"
on 3" bars 5"

80-116-716
EARTH DRAWING
EASTERN AVE - WBL - FONGA ST. TO 600' E. OF TOLSON ST.
SPECIAL DETAILS - STORM WATER DRAINAGE
1179

B.S. - 80-33491

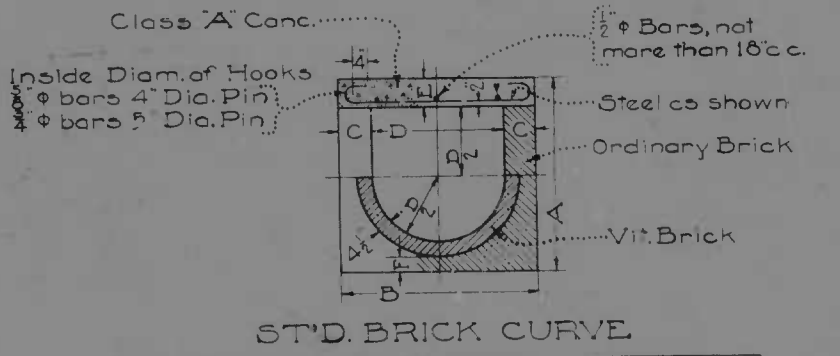
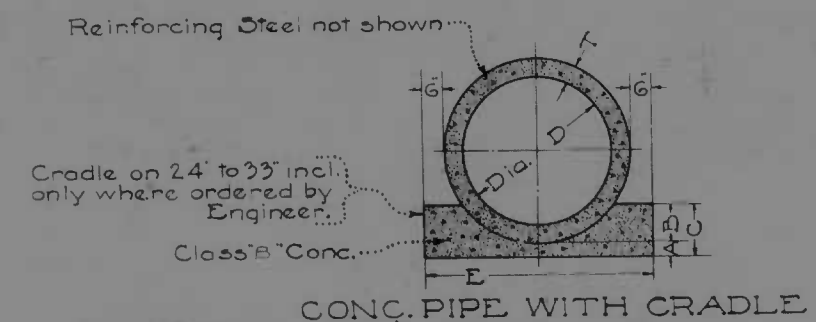
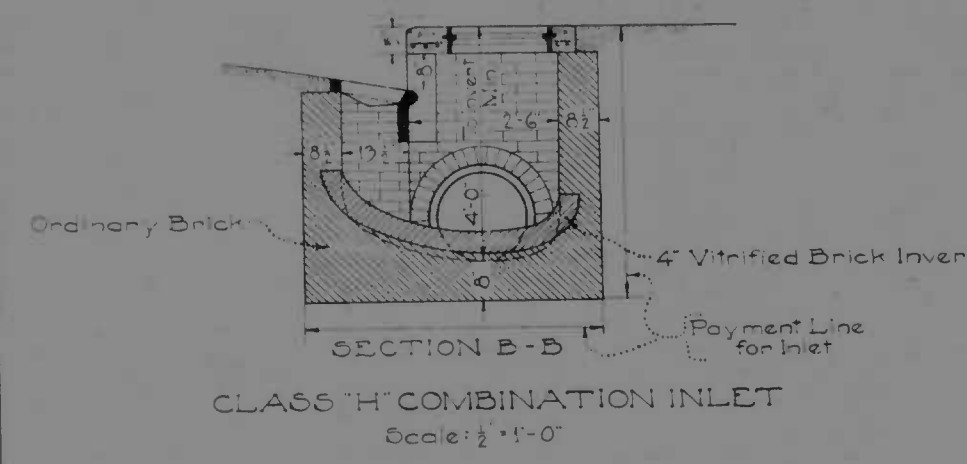
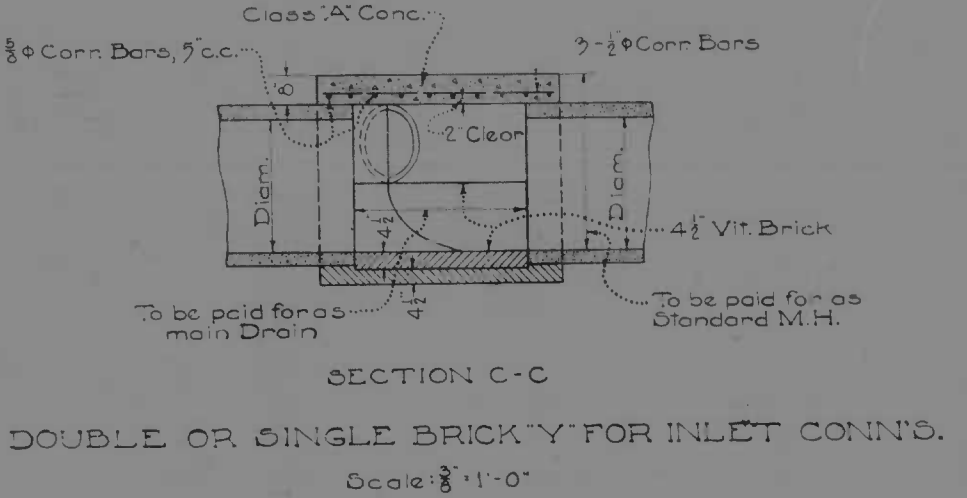
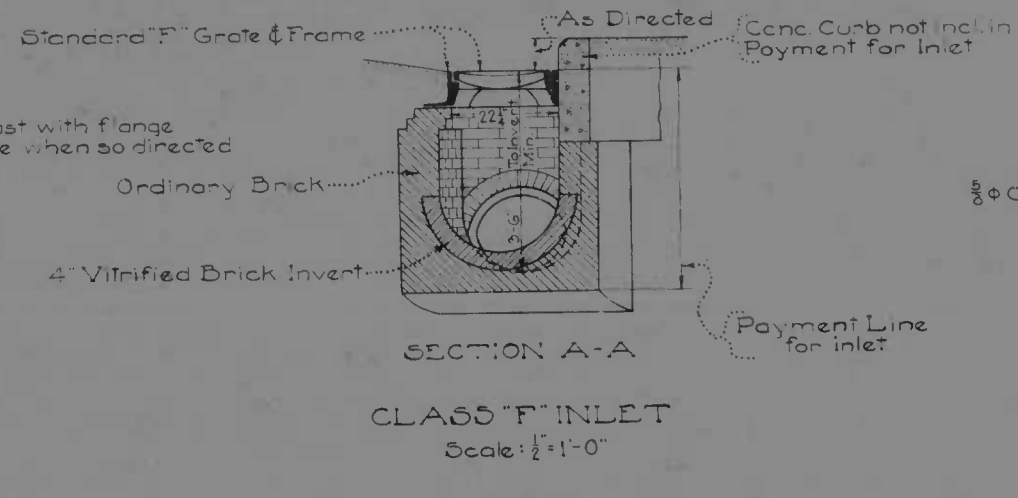
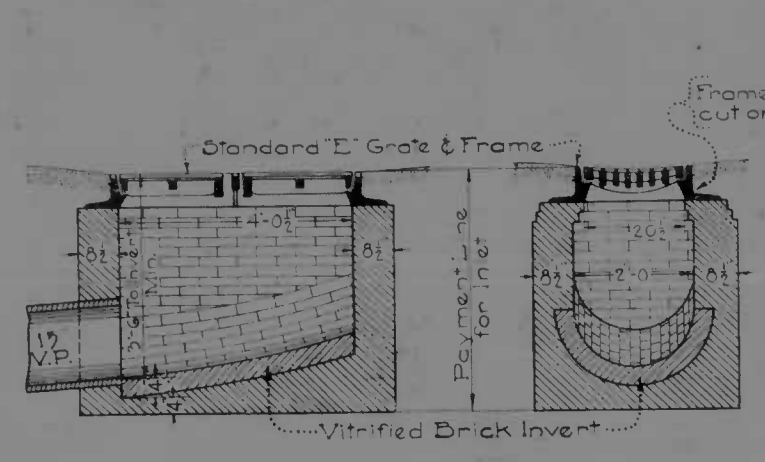
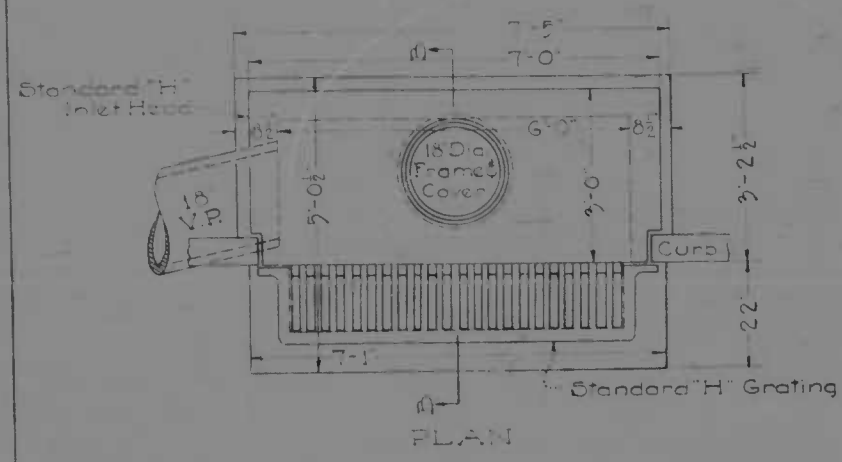
MICROFILMED
ON
APERTURE CARDS

DRAWN BY [Signature]
TRACED BY [Signature]
CHECKED BY [Signature]



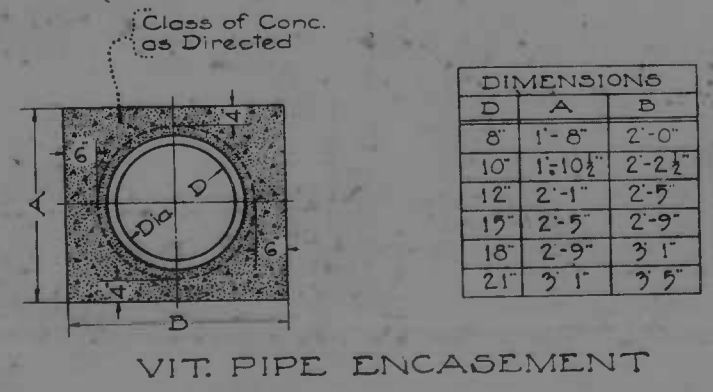
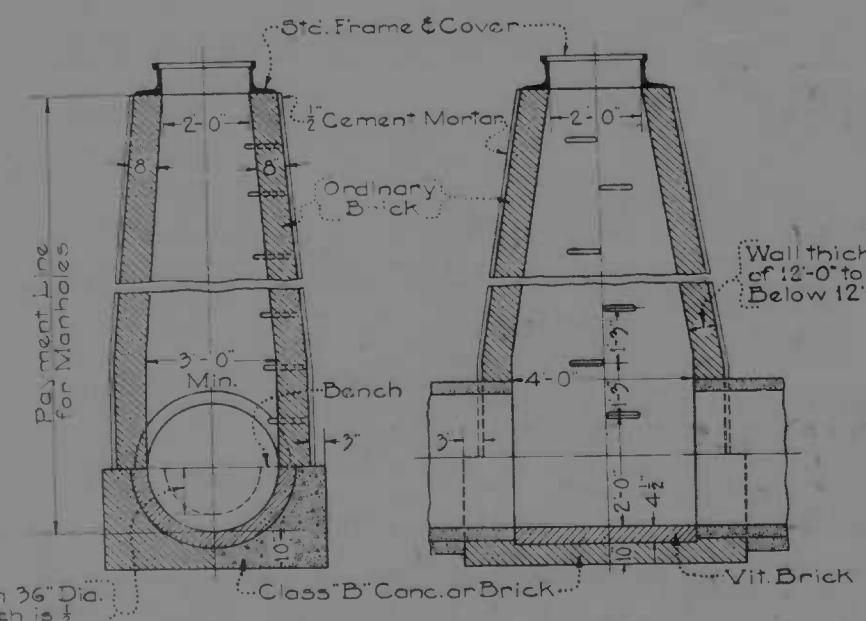
Note: Inverts to slope at least 2 per foot toward outlet

Note: Direction of Inlet Connections will vary to suit conditions



DIMENSIONS						
D	A	B	C	E	F	T
inches	inches	inches	inches	inches	inches	inches
24	3	6	9	3-6	3	3
27	3	7	10	3-10	3 1/2	3 1/2
30	4	7 1/2	11 1/2	4-1	3 1/2	3 1/2
33	4	8	12	4-7	4	4
36	4	9	13	4-8	4	4
42	4	10 1/2	14 1/2	5-3	4 1/2	4 1/2
48	4	12	16	5-10	5	5
54	4	13 1/2	17 1/2	6-5	5 1/2	5 1/2

DIMENSIONS						
Size	A	B	C	E	F	Steel
24	3-5	3-6	9	8	4 1/2	3/8 Conn Bars 10' c.c.
27	3-8	3-9	9	8	4 1/2	3/8 Conn Bars 8' c.c.
30	3-11	4-0	9	8	4 1/2	3/8 Conn Bars 7' c.c.
33	4-2	4-3	9	8	4 1/2	3/8 Conn Bars 6' c.c.
36	4-5	4-6	9	8	4 1/2	3/8 Conn Bars 5' c.c.
42	5-3	5-8	13	10	6 1/2	3/8 Conn Bars 5' c.c.
48	5-9	6-2	13	10	6 1/2	3/8 Conn Bars 5' c.c.
54	6-2	6-8	13	10	6 1/2	3/8 Conn Bars 8' c.c.



DIMENSIONS		
D	A	B
8	1'-8"	2'-0"
10	1'-10 1/2"	2'-2 1/2"
12	2'-1"	2'-5"
15	2'-5"	2'-9"
18	2'-9"	3'-1"
21	3'-1"	3'-5"

For Pipe less than 36" Dia. the height of Bench is at internal dia. of Pipe.

Wall thickness to depth of 12'-0" to be 8" thick Below 12'-0" to be 13" thick

MICROFILMED ON AERITYPE CARDS

DRAWN BY
TRACED BY
CHECKED BY

BC-116-766
EASTERN WEL...
1178

INDEX OF SHEETS

SHEET NO.1	TITLE PAGE & LAYOUT
2	TYPICAL CROSS SECTIONS OF IMPROVEMENT
3	PLAN STA.00+29.90 TO STA. 6+00.00
4	PROFILE " " " " " " " " " "
5	PLAN & PROFILE- 5+75.00 " " 12+00.00
6	" " " " 12+00.00 " " 17+00.00
7	" " " " SEWER
8	SPECIAL DETAILS-
9	STANDARD " "
10	SUMMARY-PAVING
11	" " -SEWER

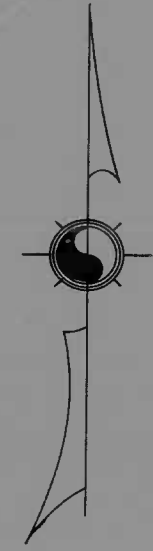
STATE OF MARYLAND
STATE ROADS COMMISSION

PLAN AND PROFILE OF PROPOSED
STATE HIGHWAY

FEDERAL AID PROJECT NO.DA-WI-5-H

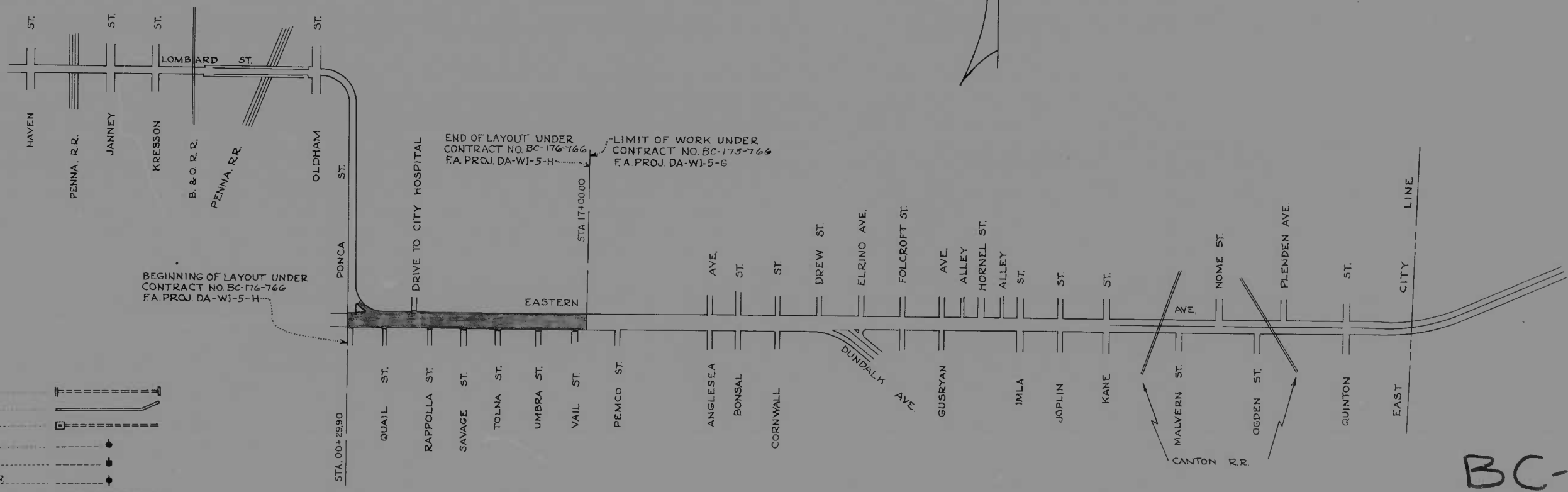
BALTIMORE CITY
EASTERN AVE.
PONCA ST. — 600' ± E.OF TOLNA ST.

SCALE PLAN, 1 IN. = 20 FT.
PROFILE, HOR. 1 IN. = 20 FT. VERT. 1 IN. = 2 FT.



CONVENTIONAL SIGNS

STATE AND NATIONAL LINE	— — — — —	CULVERTS	— — — — —
COUNTY LINE	— — — — —	RETAINING WALL	— — — — —
CITY OR VILLAGE	— — — — —	DROP INLET	— — — — —
FENCE LINE)	— — — — —	TROLLEY POLE	— — — — —
GUARD RAIL)	— — — — —	POWER POLE	— — — — —
UNFENCED PROPERTY	— — — — —	TELEPHONE OR TELEGRAPH POLE	— — — — —
RIGHT OF WAY LINE	— — — — —	MARSH	— — — — —
TRAVELED WAY	— — — — —	HEDGE	— — — — —
RAILROADS	— — — — —	GROUND ELEVATION	DATUM LINE
BASE OR SURVEY LINE	— — — — —	GRADE ELEVATION	DATUM LINE



LAYOUT
SCALE: 1" = 500'

BC-176-766

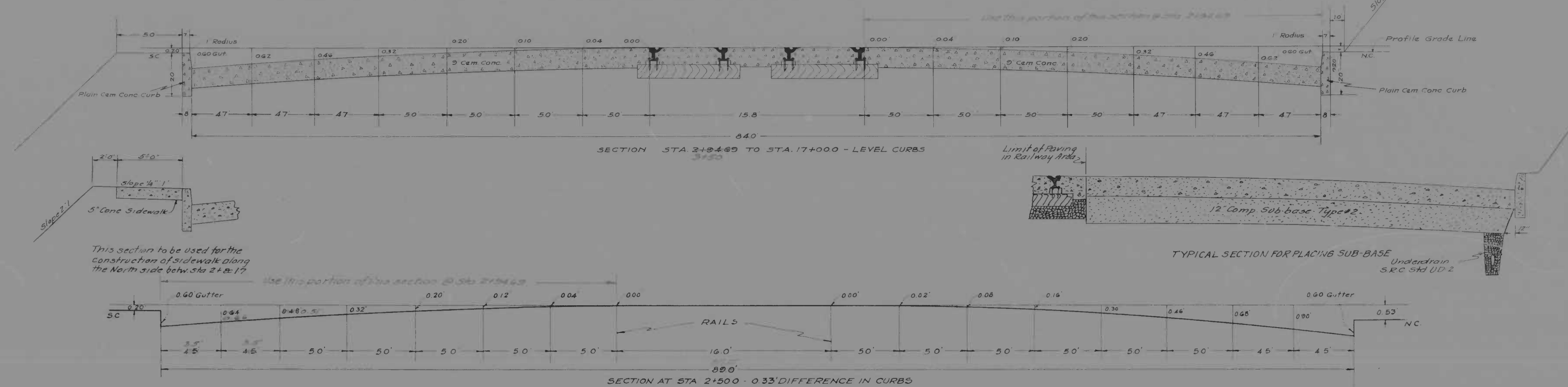
FOR DETAILS OF CULVERTS, ETC. SEE STANDARD SHEET.
STATE SPECIFICATIONS AND STANDARD PLANS ON FILE IN BUREAU OF PUBLIC ROADS.

DRAWER [Redacted]
APPROVED [Signature]
APPROVED [Signature]

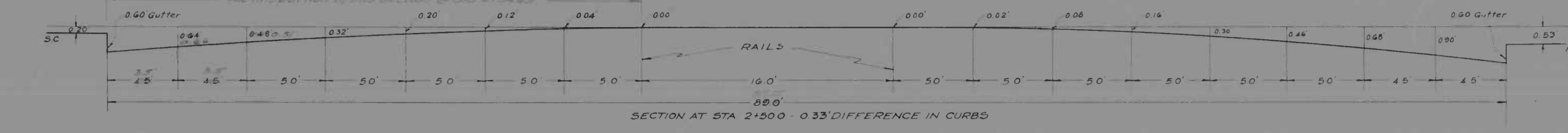
RECOMMENDED FOR APPROVAL
DISTRICT ENGINEER
PUBLIC ROADS ADMINISTRATION
FEDERAL WORKS AGENCY
APPROVED
COMMISSIONER
PUBLIC ROADS ADMINISTRATION
FEDERAL WORKS AGENCY

MICROFILMED ON APERTURE CARDS

FED. ROAD DIST. NO.	STATE	PROJ. NO.	SHEET NO.	TOTAL SHEETS
10	MD	DAWI 5H	2	11



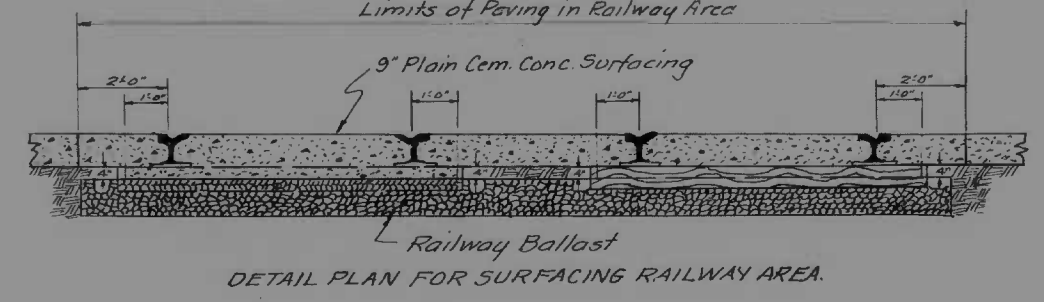
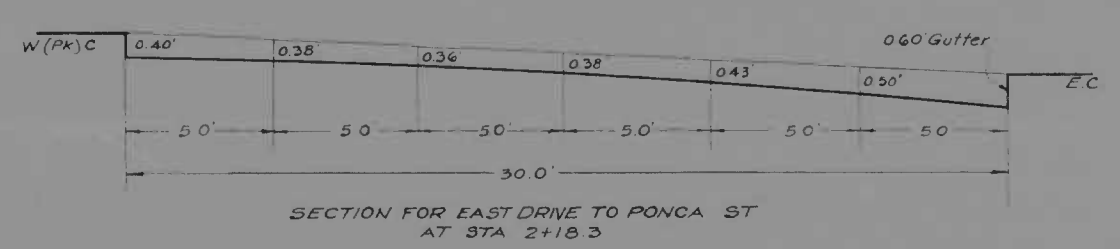
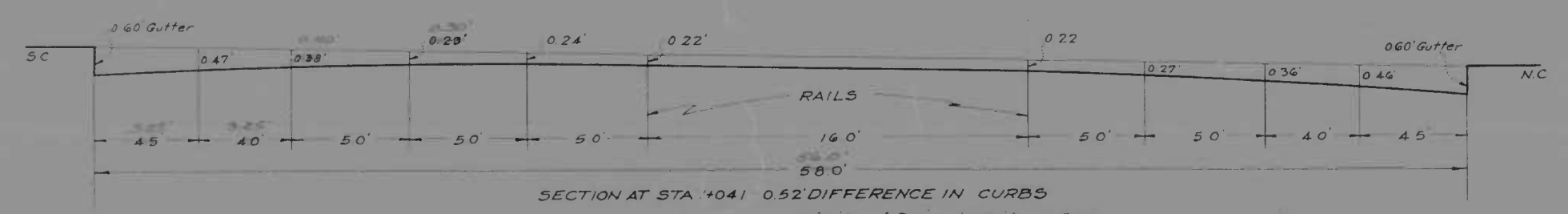
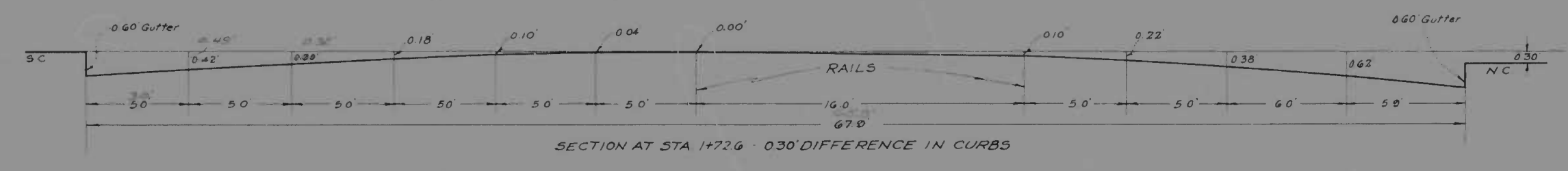
This section to be used for the construction of sidewalk along the North side between Sta 2+817



NOTE: The proposed sidewalk as indicated on the quantity sheet includes the replacement of such areas of existing sidewalk which may be damaged during the course of construction. The affected areas will be those immediately adjacent to the back of the proposed curbing.

A-4, Silt	
A-7, Clay	
A-7-1, Silty Clay	

Note - Borings were taken off pavement. Due to previous mixing and handling, soil classification in its native condition was difficult to determine. This should be considered when examining soil conditions as shown on plans.

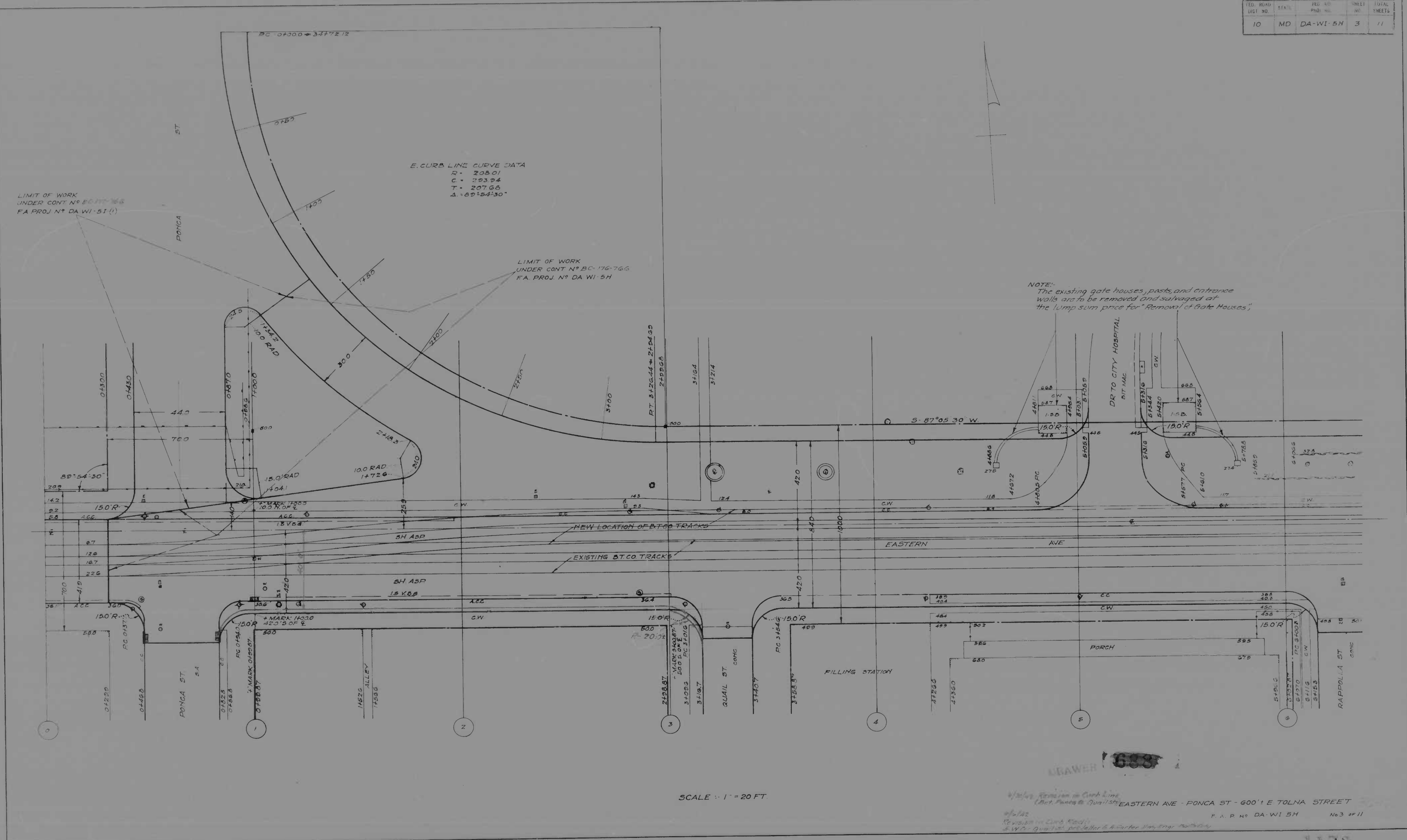


SCALE | HOR 1"=40FT VERT 1"=20FT

REVISIONS	STATE OF MARYLAND STATE ROADS COMMISSION PLANS AND SURVEYS DEPARTMENT EASTERN AVE - PONCA ST - 600' E TOLNA STREET CONT. NO. DC176-766 F & P NO. DAWI 5H SHEET NO. 2 OF 11 PREL. TRAC. BY FINAL TRAC. BY
Revised 7/2/82-JCP	1179

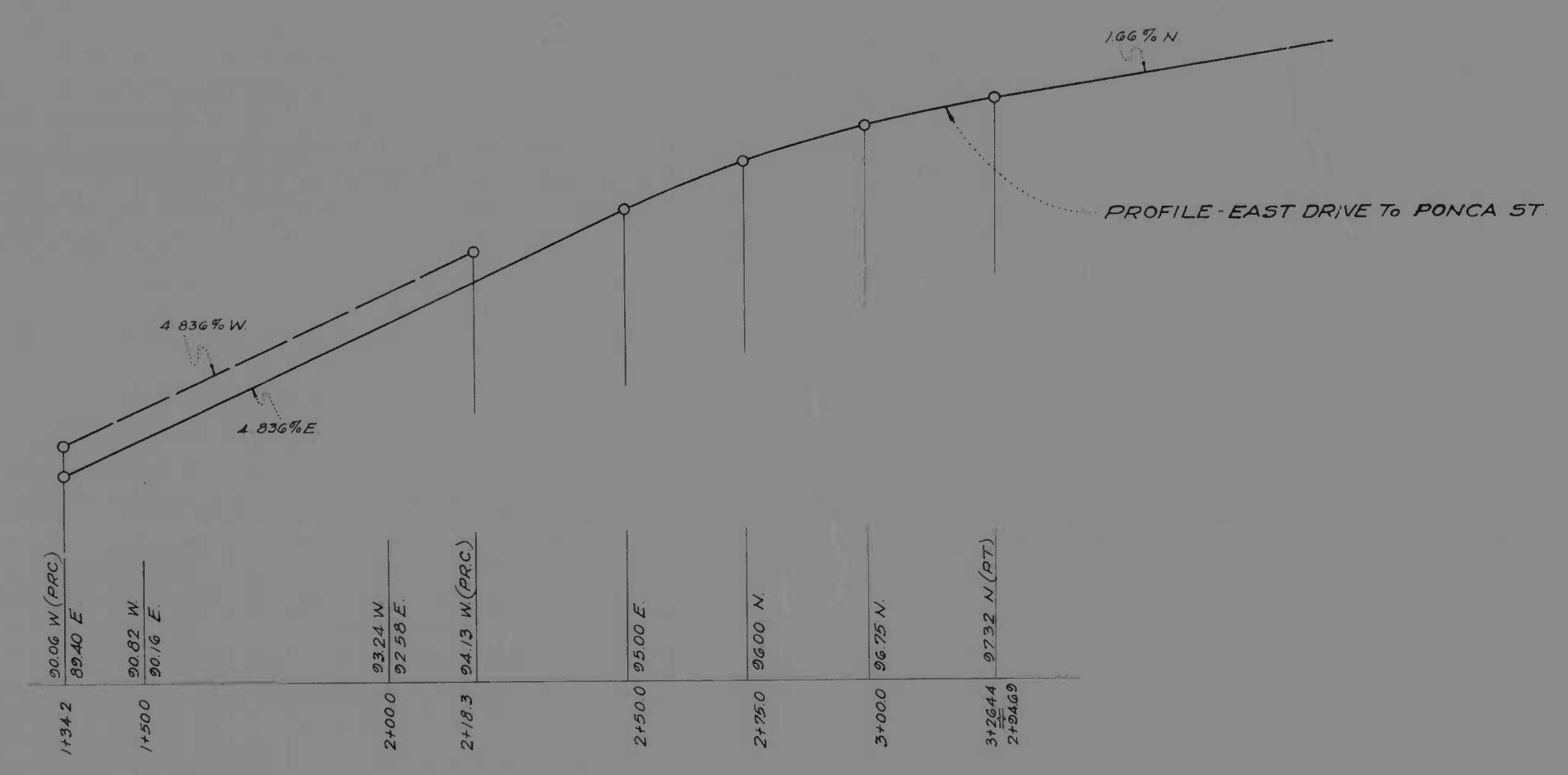
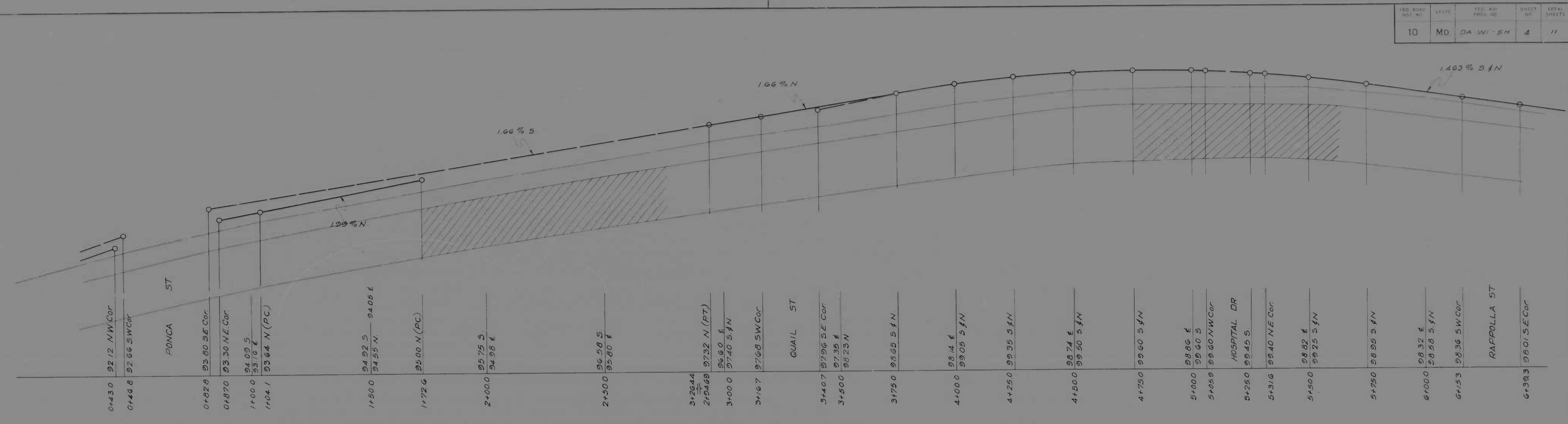
MICROFILMED
ON
APERTURE CARDS
 Wilson T. R...
4/1/42

FED. ROAD DIST. NO.	STA.	PROJ. NO.	SHEET NO.	TOTAL SHEETS
10	MD	DA-WI-5H	3	11



MADE BY
ON
APERTURE CARDS

FED. ROAD DIST. NO.	STATE	FED. AID PROJ. NO.	SHEET NO.	TOTAL SHEETS
10	MD	DA WI - 54	4	11



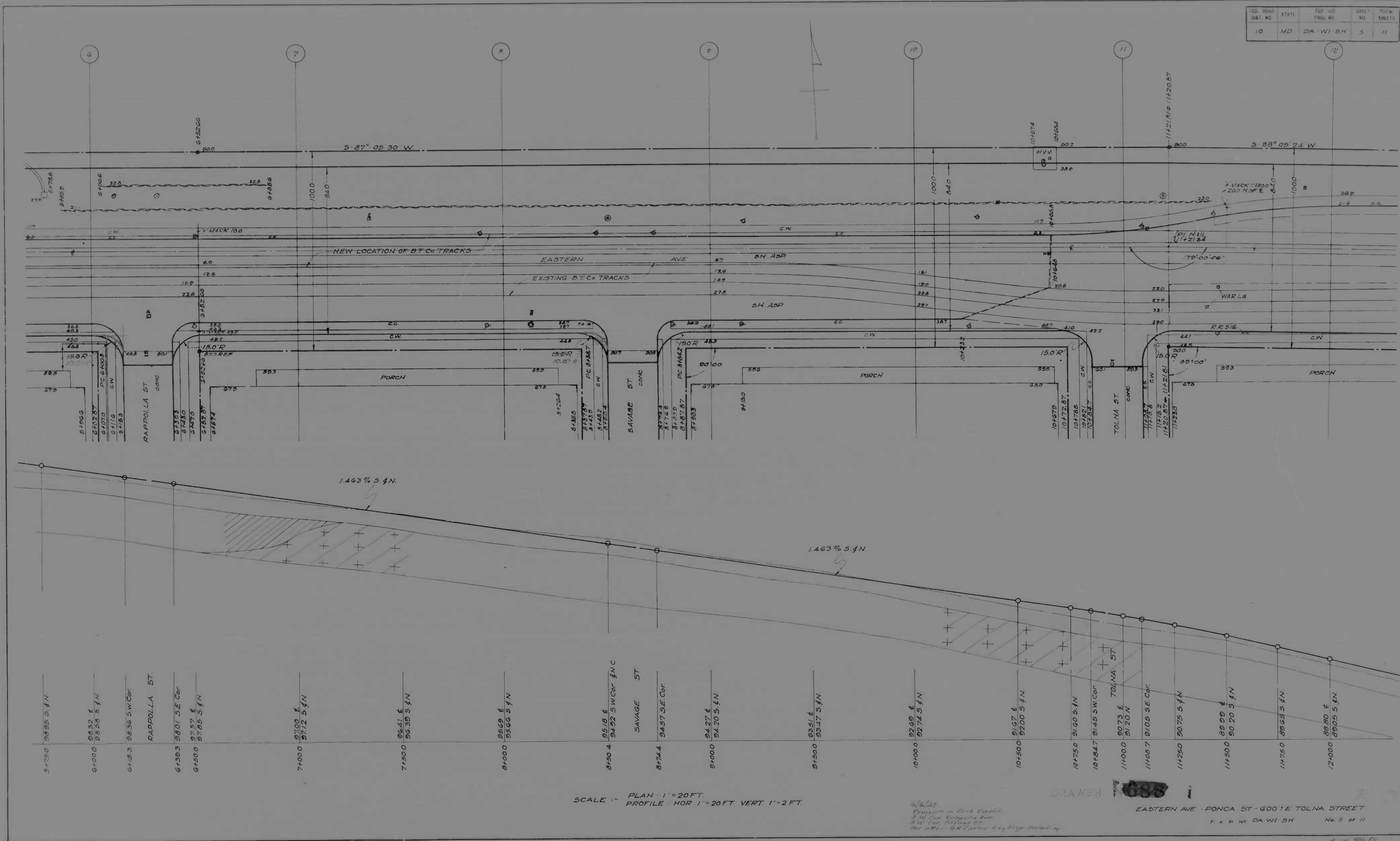
SCALE | PLAN | PROFILE. HOR. 1 IN. = 20 FT. VERT. 1 IN. = 2 FT.

REVISIONS	STATE OF MARYLAND STATE ROADS COMMISSION PLANS AND SURVEYS DEPARTMENT EASTERN AVE - PONCA ST - 600' E TOLNA STREET CONT. NO. DC 176-766 F. A. P. NO. DA WI 54 SHEET NO. 4 OF 11 PREL. TRAC. BY _____ FINAL TRAC. BY _____
-----------	--

MICROFILMED
ON
APERTURE CARDS

1173

ED. ROAD DIST. NO.	STATE	ED. PROJ. NO.	SHEET NO.	TOTAL SHEETS
10	MD	DA-WI-5H	5	11



MICROFILMED ON APERTURE CARDS

SCALE: PLAN 1" = 20 FT. PROFILE HOR 1" = 20 FT. VERT 1" = 2 FT.

DRAWER 688

1/2/23
 Revision - 1/2/23
 S.W. Cor. Rappolla St
 S.W. Cor. Savage St
 S.W. Cor. Tolma St

EASTERN AVE - PONCA ST - 600' E TOLMA STREET
 P.A.P. NO. DA-WI-5H No. 5 of 11

1179