

INDEX OF SHEETS

SHEET	NO.	TITLE PAGE & LAYOUT
"	"	2 TYPICAL CROSS SECTIONS OF IMPROVEMENT
"	"	3 PLAN STA. 74+64.75-58+00
"	"	4 PROFILE-ERDMAN AVE. & SOUTH DRIVE
"	"	5 PROFILES NORTH & WEST DR.; NORTH & SOUTH LEAF
"	"	6 GENERAL PLAN & SUMMARY OF QUANTITIES-BRIDGE
"	"	7 PLAN & ELEVATION
"	"	8 PIER ABUTMENTS & WALLS
"	"	9 SUPERSTRUCTURE
"	"	10 MISCELLANEOUS DETAILS
"	"	11 GRADING PLAN
"	"	12 PLAN & PROFILE-SANITARY SEWER & STORM DRAIN
"	"	13 " " " " " "
"	"	14 MISCELLANEOUS DETAILS
"	"	15 SUMMARY OF QUANTITIES PAVING
"	"	16 " " " " " " SEWER

STATE OF MARYLAND
STATE ROADS COMMISSION

**PLAN AND PROFILE OF PROPOSED
STATE HIGHWAY**

FEDERAL AID PROJECT NO. DA-NI-3D

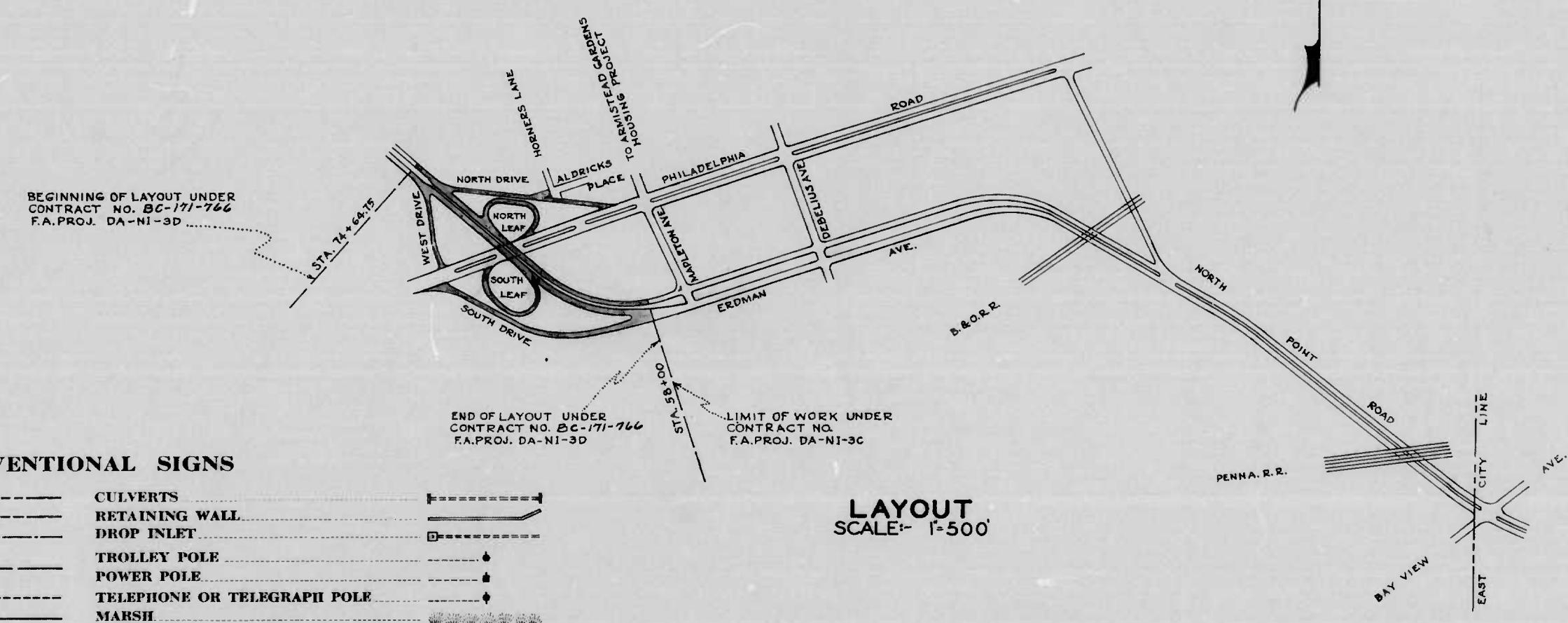
BALTIMORE CITY
ERDMAN AVE & CONNECTIONS
700'± N. PHILADELPHIA RD. — 350'± W. MAPLETON AVE.

SCALE 1/4" PLAN, 1/8" IN. = 50 FT. VERT. 1/8" IN. = 10 FT.

10	MD. DA-NI-3D	1	16
----	--------------	---	----

SOIL LEGEND

- A-3, Sand, Zero Fl.
- A-2, Sand with fines
- A-4, Silt
- A-7, Clay
- A-7^s, Silty Clay



CONVENTIONAL SIGNS

STATE AND NATIONAL LINE	-----	CULVERTS	-----
COUNTY LINE	-----	RETAINING WALL	-----
CITY OR VILLAGE	-----	DROP INLET	-----
FENCE LINE	-----	TROLLEY POLE	-----
GEARD RAIL	-----	POWER POLE	-----
UNFENCED PROPERTY	-----	TELEPHONE OR TELEGRAPH POLE	-----
RIGHT OF WAY LINE	-----	MASSH	-----
TRAVELED WAY	-----	HEDGE	-----
RAILROADS	-----	GROUND ELEVATION	DATUM LINE
BASE OR SURVEY LINE	-----	GRADE ELEVATION	DATUM LINE

LAYOUT SCALE: 1" = 500'

BC-171-766

FOR DETAILS OF CULVERTS, ETC. SEE STANDARD SHEET.
STATE SPECIFICATIONS AND STANDARD PLANS ON FILE IN BUREAU OF PUBLIC ROADS.

1178
DRAWER [REDACTED]

APPROVED
George Colby
CHIEF ENGINEER, CITY OF BALTIMORE

APPROVED
William T. Belland
CHIEF ENGINEER, STATE ROADS COMMISSION 3/7/42

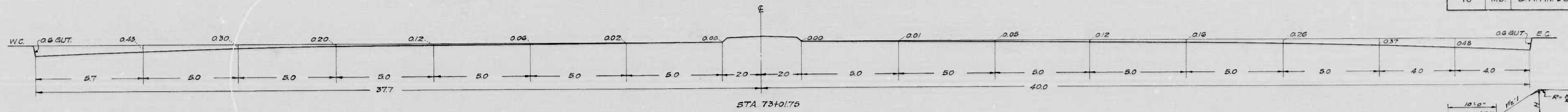
RECOMMENDED FOR APPROVAL

APPROVED

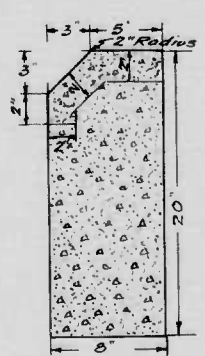
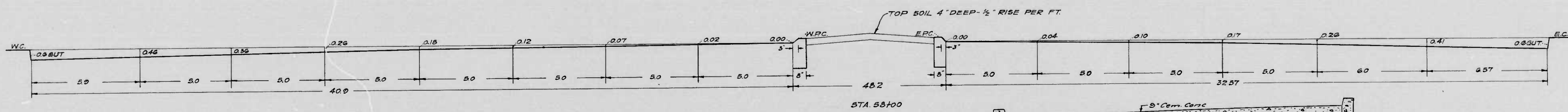
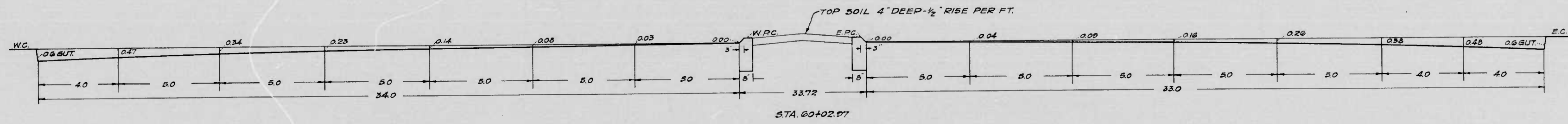
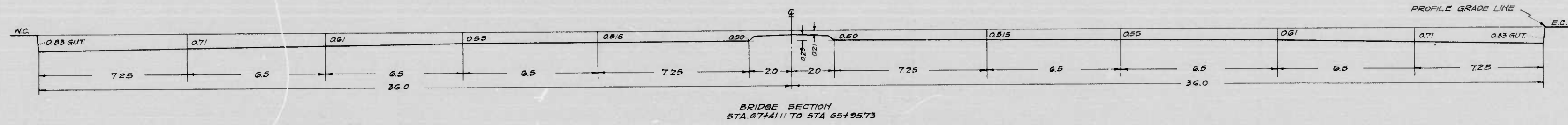
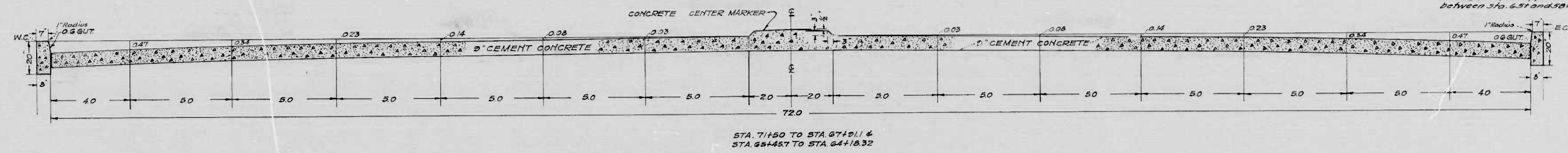
APPROVED

MICROFILMED ON APERTURE CA

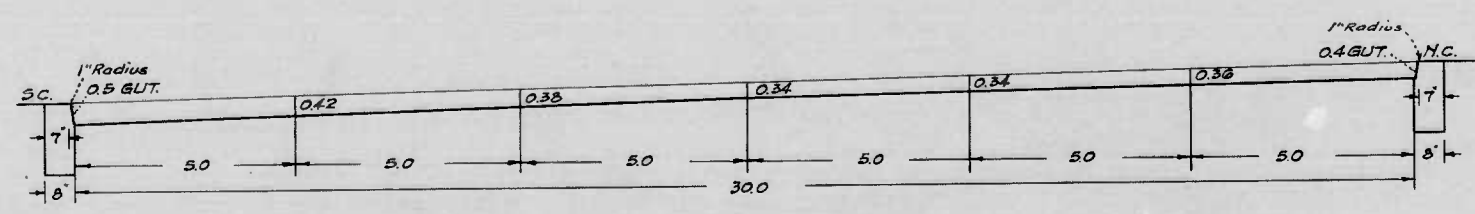
FED. ROAD DIST. NO.	STATE	FED. AID PROJ. NO.	SHEET NO.	TOTAL SHEETS
10	Md.	DA-NI-3D	2	16



NOTE:
It is proposed to construct a 10' sidewalk area along the N. side, West and S. side respectively of the North, West and South Drives and along the North side of the approach to Overhead Structure between Sta. 631 and 580.00.



DETAIL OF PARKING CURBS (White Cem)
SCALE = 1/2" = 1'-0"
STA 74+26 TO STA 73+84.75
STA 64+18.32 TO STA 58+00

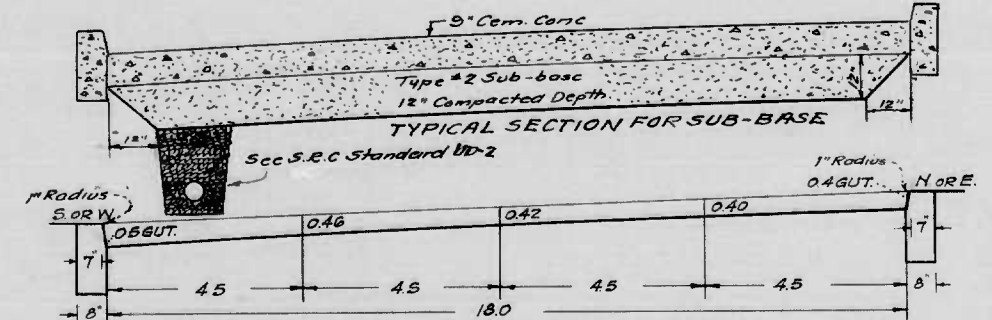


SECTION FOR ALRICKS PLACE

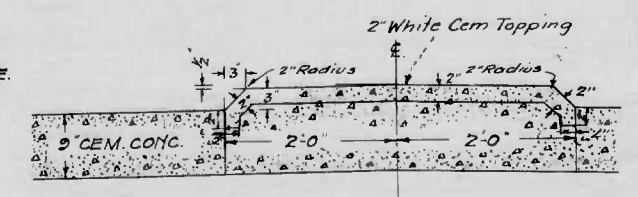
NOTE -
Longitudinal Construction Joints shall be used in accordance with the Special Provisions and the S.R.C. Standards for Longitudinal Joint Construction.

SCALE = 3/8" = 1'-0"

NOTE -
The areas inside of the leafs and also between the leafs and the several approach drives will be graded, so as to permit first suitable drainage and, second, to blend in continuity with the constant changing grades and with the layout of existing properties, slopes and structures, where variable ratios and will be laid out in the field.



TYPICAL SECTION FOR SUB-BASE
NORTH DRIVE - STA 1435 TO STA 8+50 REVERSED
NORTH LEAF - STA 1450 TO STA 6+11.5
WEST DRIVE - STA 1480 TO STA 64+1.8
SOUTH DRIVE - STA 1475 TO STA 10+9.8
SOUTH LEAF - STA 1424 TO STA 7+59.4 REVERSED



DETAIL OF CONCRETE CENTER MARKER (White Cem)
SCALE = 1/2" = 1'-0"
STA 73+84.75 TO STA 64+18.32

REVISIONS
7/24/42 Bridge Section

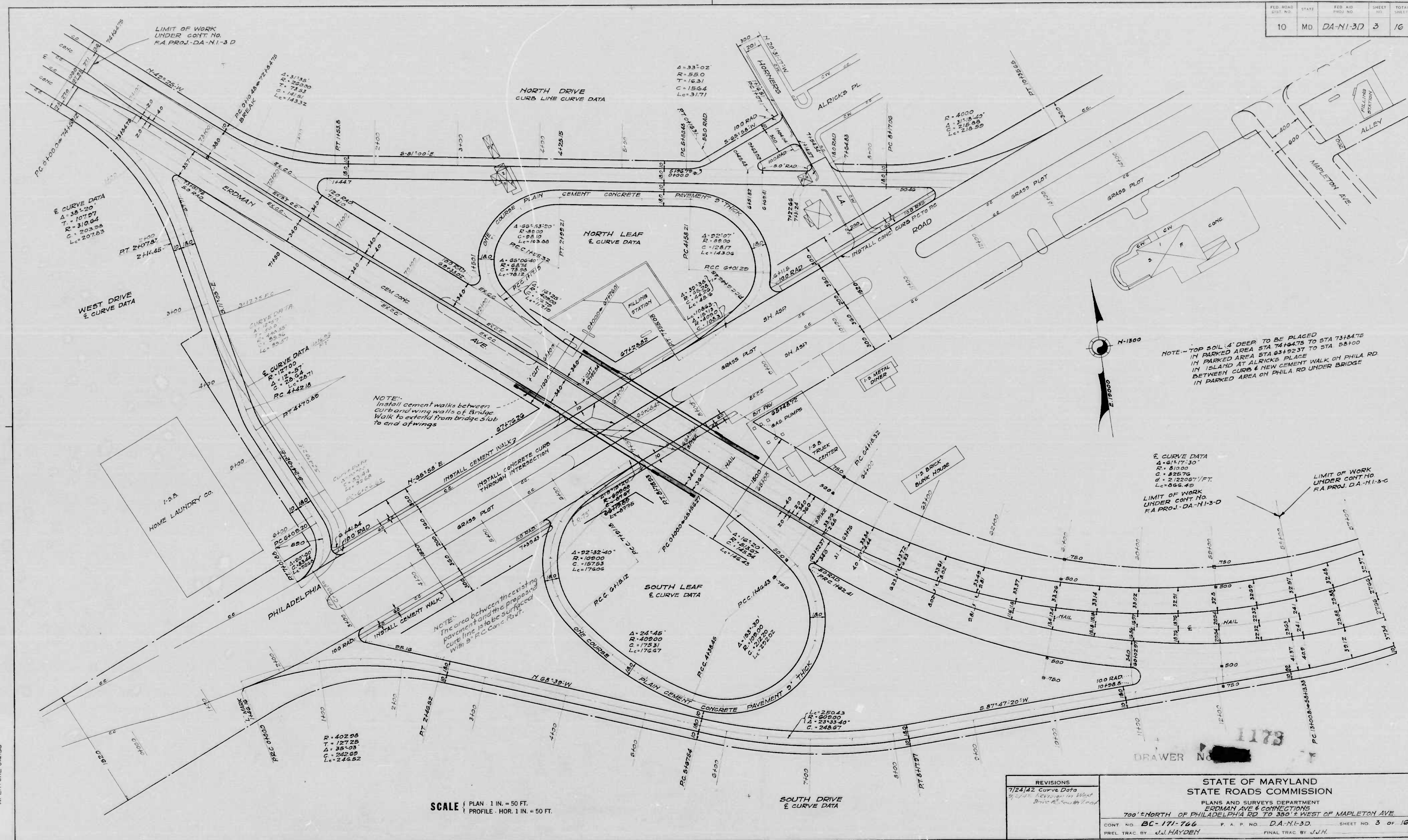
1178 DRAWER

STATE OF MARYLAND
STATE ROADS COMMISSION
PLANS AND SURVEYS DEPARTMENT
ERDMAN AVE & CONNECTIONS
700' NORTH OF PHILADELPHIA RD. TO 380' WEST OF MAPLETON AVE.

CONT. NO. BC-171-766 F. A. P. NO. DA-NI-3D SHEET NO. 2 OF 16
PREL. TRAC. BY J.J.H. FINAL TRAC. BY J.J.H.

MICROFILMED ON APERTURE CARDS
William T. Ballard

FED. ROAD DIST. NO.	STATE	FED. AID PROJ. NO.	SHEET NO.	TOTAL SHEETS
10	MD	DA-NI-3-D	3	16



NOTE: - TOP SOIL 4" DEEP TO BE PLACED IN PARKED AREA STA 74+44.75 TO STA 73+44.75 IN PARKED AREA STA 64+22.37 TO STA 58+00 IN ISLAND AT ALRICKS PLACE IN PARKED AREA BETWEEN CURB & NEW CEMENT WALK ON PHILA RD UNDER BRIDGE IN PARKED AREA ON PHILA RD UNDER BRIDGE

LIMIT OF WORK UNDER CONT. NO. RA PROJ. DA-NI-3-D

SCALE | PLAN 1 IN. = 50 FT. | PROFILE HOR. 1 IN. = 50 FT.

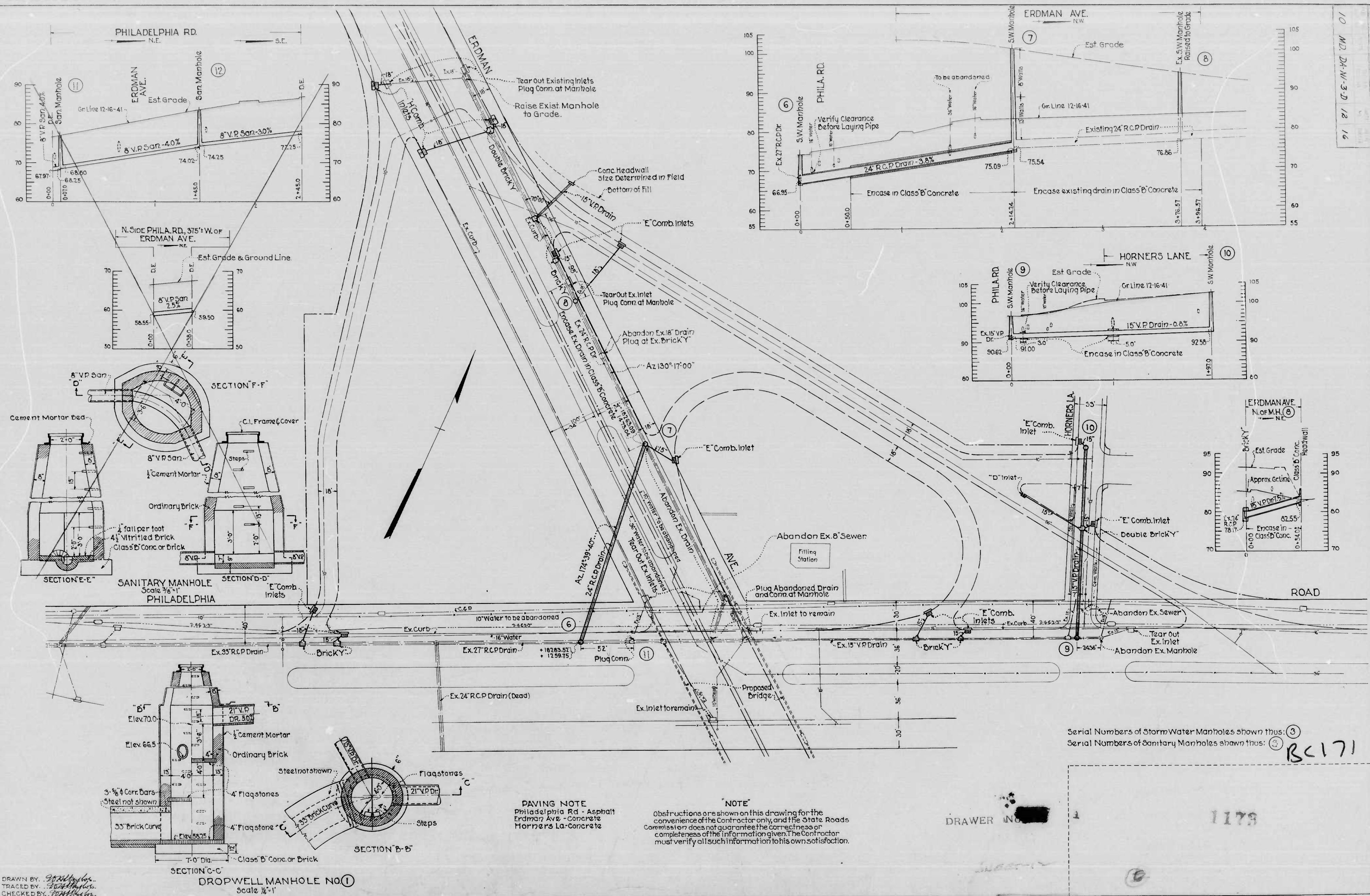
REVISIONS
7/24/42 Curve Data
8/1/42 Section in West Drive
8/1/42 Section in West Drive

STATE OF MARYLAND
STATE ROADS COMMISSION
PLANS AND SURVEYS DEPARTMENT
ERDMAN AVE & CONNECTIONS
700' NORTH OF PHILADELPHIA RD TO 380' WEST OF MAPLETON AVE
CONT. NO. BC-171-766 P. A. P. NO. DA-NI-3-D SHEET NO. 3 OF 16
PREL. TRAC. BY J.J. HAYDEN FINAL TRAC. BY J.J.H.

MICROFILMED ON APERTURE CARDS

B.S. 80-33475

10 M.D. 24-N-3-D 12 16



DRAWN BY: *[Signature]*
TRACED BY: *[Signature]*
CHECKED BY: *[Signature]*

DROPWELL MANHOLE NO. 1
Scale 1/4" = 1'

PAVING NOTE
Philadelphia Rd - Asphalt
Erdman Ave - Concrete
Horners Ln - Concrete

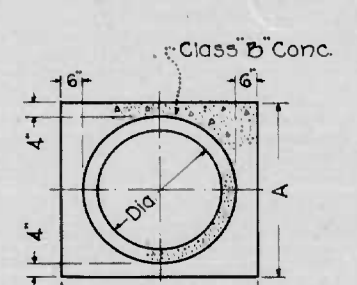
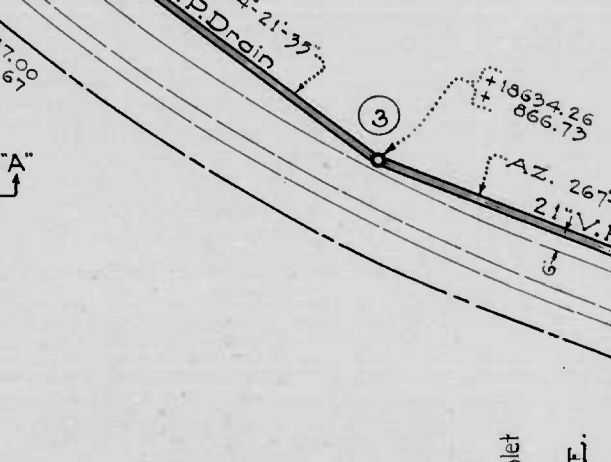
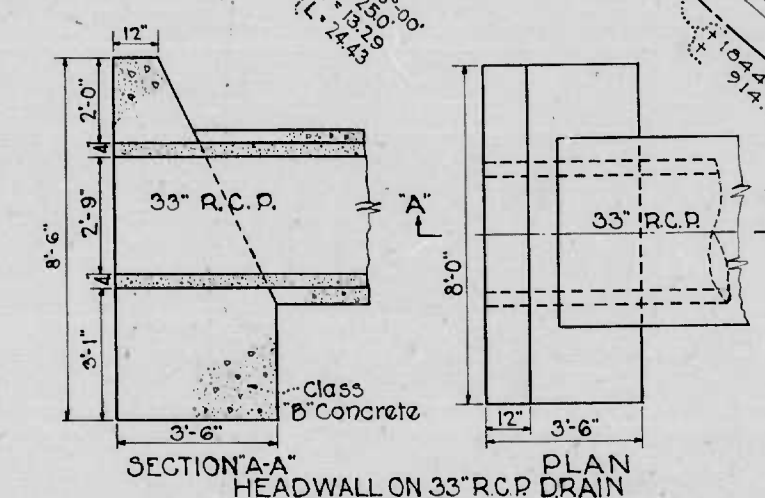
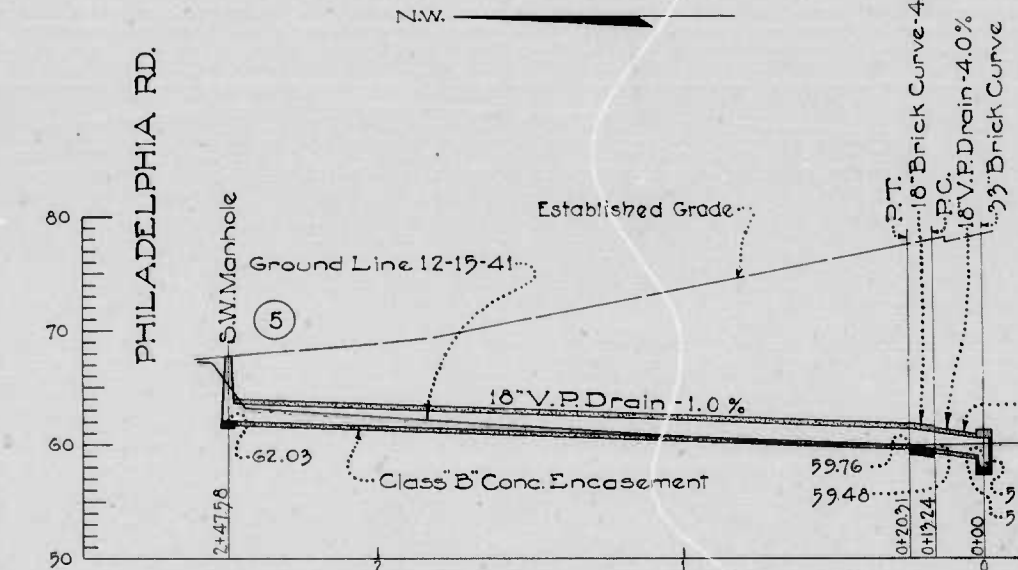
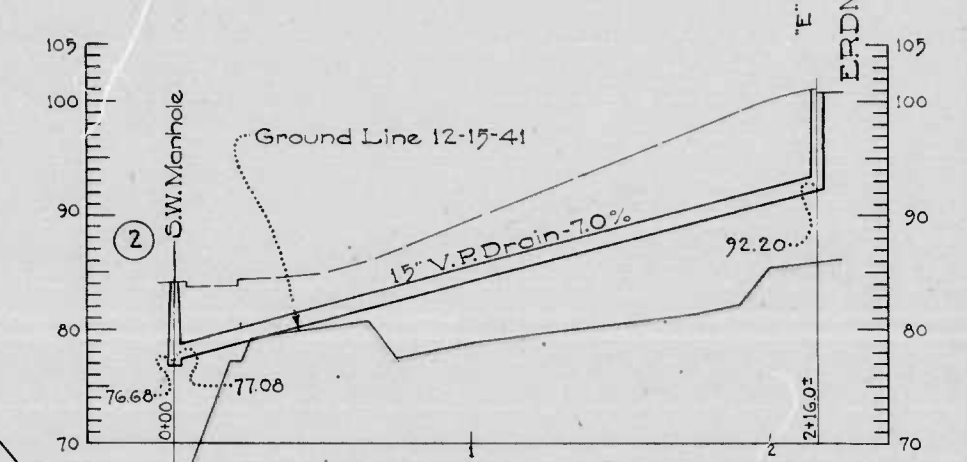
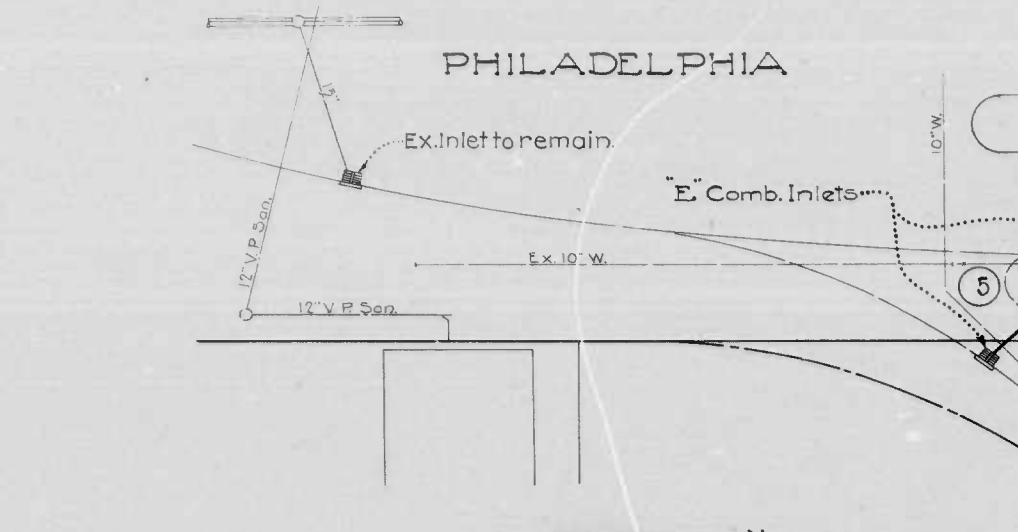
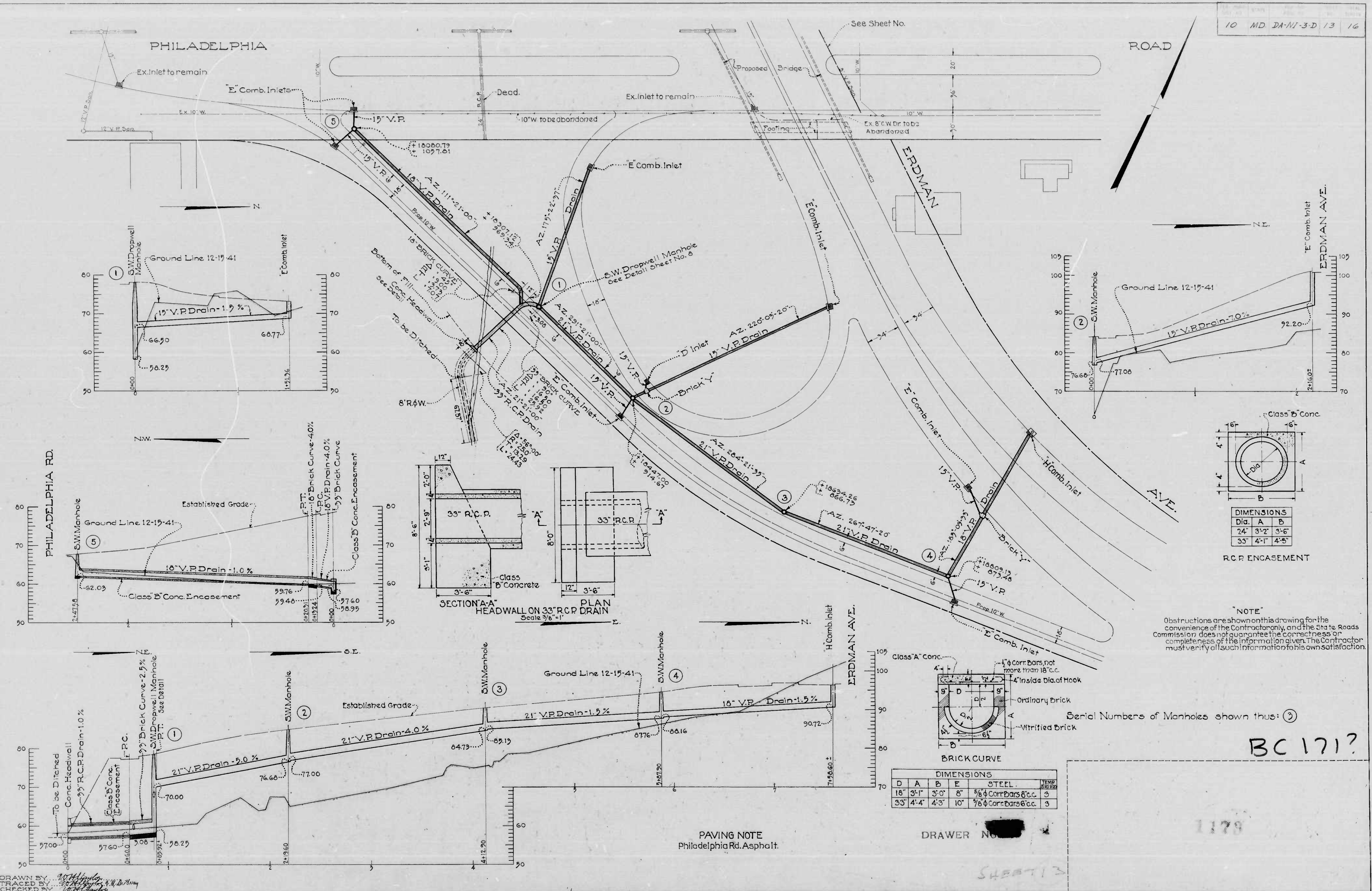
NOTE
Obstructions are shown on this drawing for the convenience of the Contractor only, and the State Roads Commission does not guarantee the correctness or completeness of the information given. The Contractor must verify all such information to his own satisfaction.

Serial Numbers of Storm Water Manholes shown thus: (3)
Serial Numbers of Sanitary Manholes shown thus: (3) BC171

DRAWER NO. [Redacted]

1178

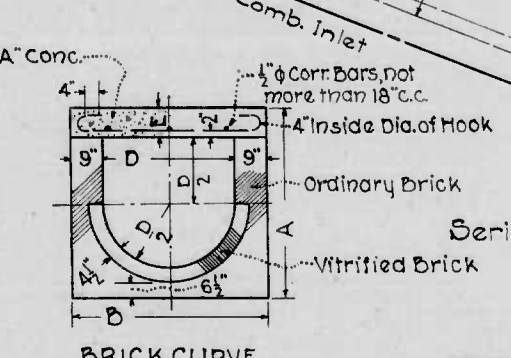
10	MD	DA-NI-3-D	13	16
----	----	-----------	----	----



DIMENSIONS		
Dia.	A	B
24"	3'-2"	3'-6"
33"	4'-1"	4'-5"

R.C.P. ENCASUREMENT

"NOTE"
Obstructions are shown on this drawing for the convenience of the Contractor only, and the State Roads Commission does not guarantee the correctness or completeness of the information given. The Contractor must verify all such information for his own satisfaction.



DIMENSIONS			
D	A	B	E
18"	3'-1"	3'-0"	8"
33"	4'-4"	4'-3"	10"

STEEL: 3/8" Cor. Bars @ ecc. 3
3/8" Cor. Bars @ ecc. 3

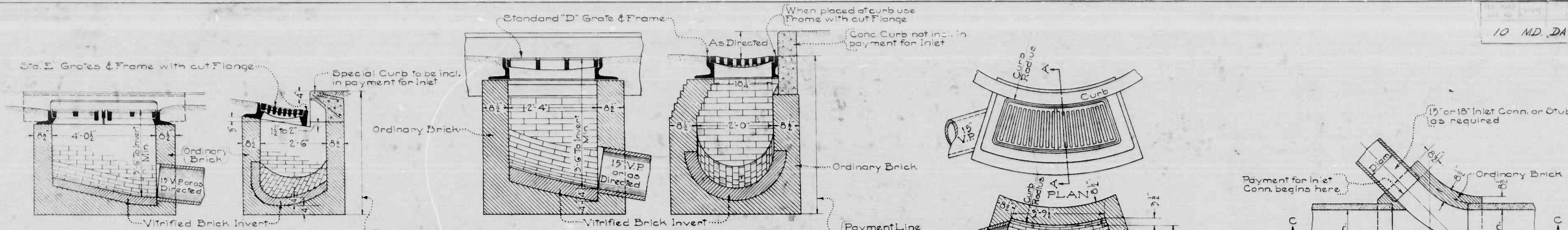
Serial Numbers of Manholes shown thus: ③

BC 171?

PAVING NOTE
Philadelphia Rd. Asphalt.

DRAWER NO. [REDACTED]

1178

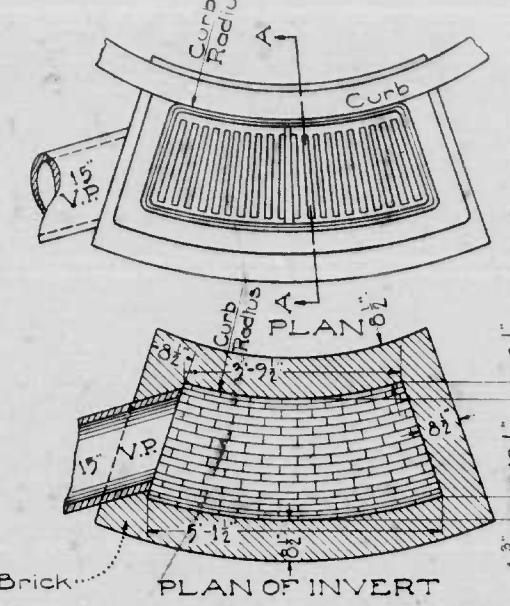


CLASS 'E' COMBINATION INLET
Scale: 1/2" = 1'-0"

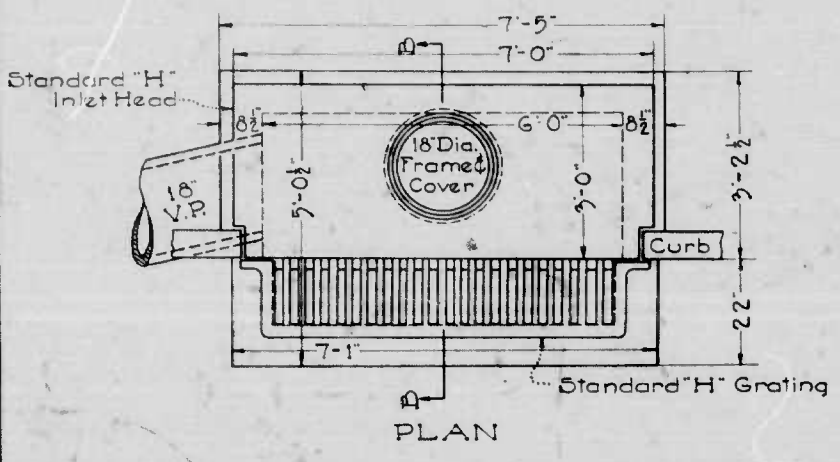
CLASS 'D' INLET
Scale: 1/2" = 1'-0"

Note: Inverts to slope at least 2" per foot toward outlet

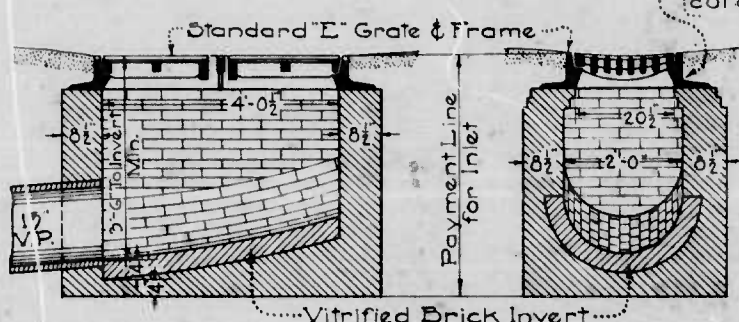
Note: Direction of Inlet Connections will vary to suit conditions



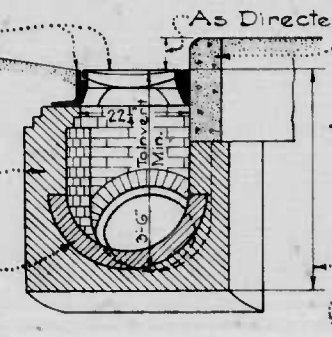
PLAN OF INVERT



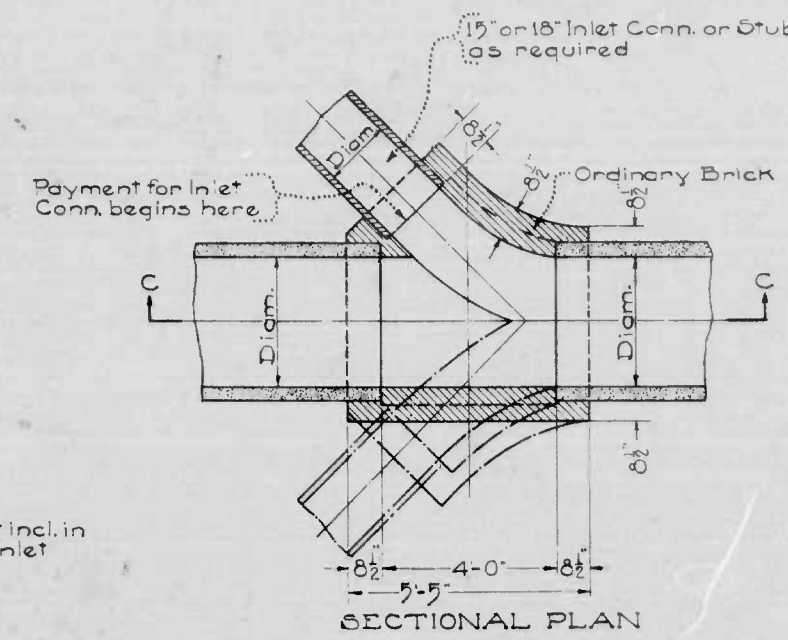
PLAN



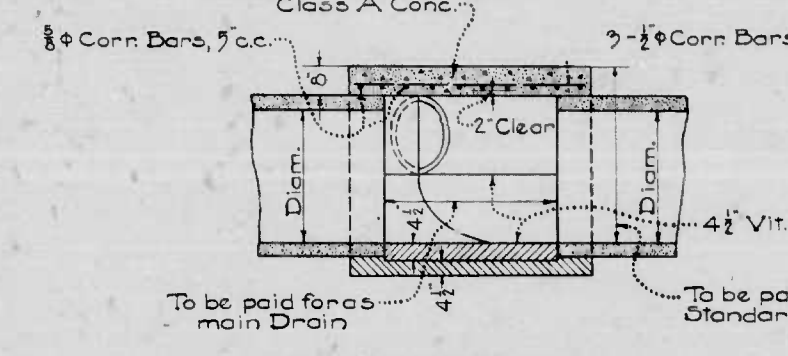
CLASS 'E' INLET
Scale: 1/2" = 1'-0"



CLASS 'F' INLET
Scale: 1/2" = 1'-0"

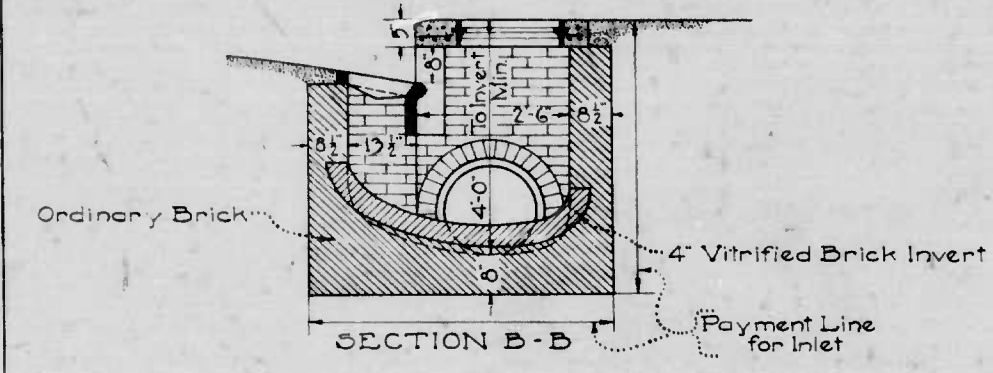


SECTIONAL PLAN

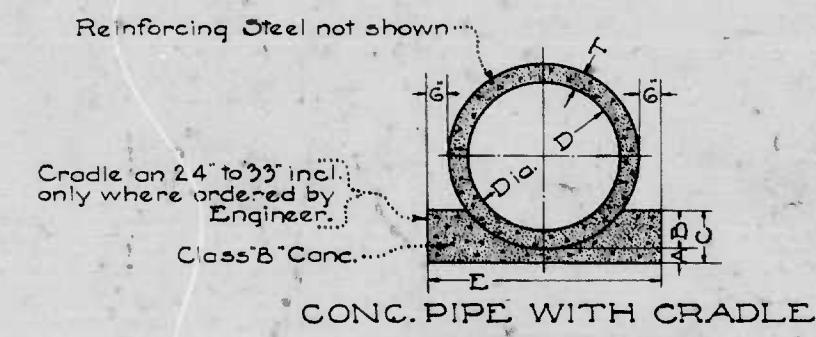


SECTION C-C

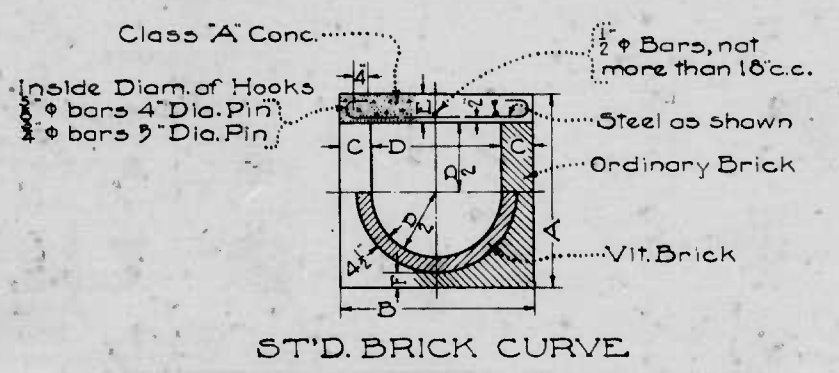
DOUBLE OR SINGLE BRICK 'Y' FOR INLET CONN'S
Scale: 3/8" = 1'-0"



CLASS 'H' COMBINATION INLET
Scale: 1/2" = 1'-0"



CONC. PIPE WITH CRADLE



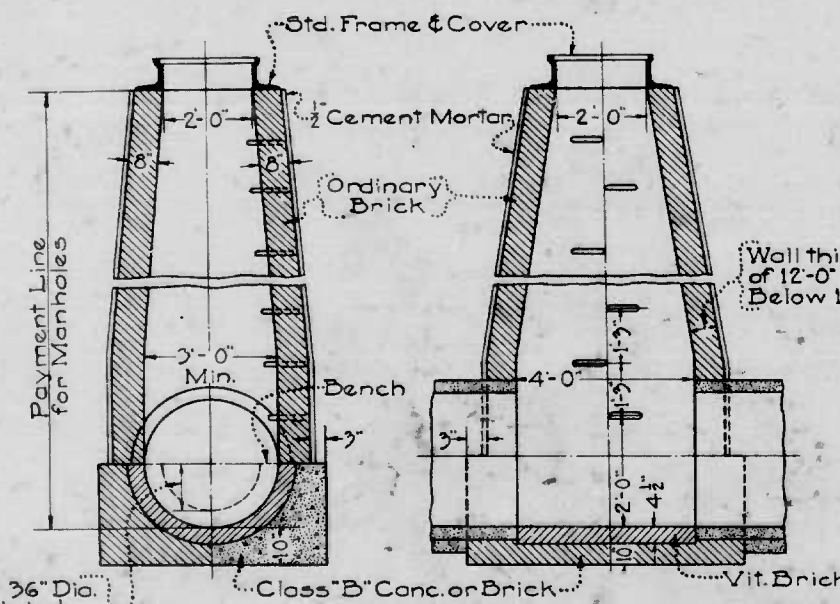
ST'D. BRICK CURVE

DIMENSIONS

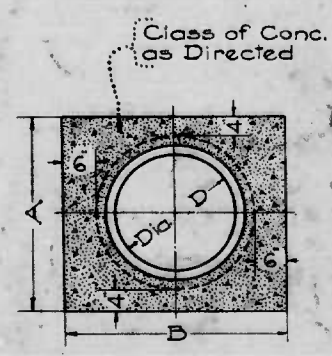
D	A	B	C	Feet & T	T
inches	inches	inches	inches		inches
24	3	6	9	3-6	3
27	3	7	10	3-10	3 1/2
30	4	7 1/2	11 1/2	4-1	3 1/2
33	4	8	12	4-7	4
36	4	9	13	4-6	4
42	4	10 1/2	14 1/2	5-3	4 1/2
48	4	12	16	5-10	5
54	4	13 1/2	17 1/2	6-5	5 1/2

DIMENSIONS

Height	A	B	C	E	F	Steel
24"	3'-5"	3'-6"	9"	8"	4 1/2"	3 # Conn. Bars 10'cc. 3
27"	3'-6"	3'-9"	9"	8"	4 1/2"	3 # Conn. Bars 8'cc. 3
30"	3'-11"	4'-0"	9"	8"	4 1/2"	3 # Conn. Bars 7'cc. 3
33"	4'-2"	4'-3"	9"	8"	4 1/2"	3 # Conn. Bars 6'cc. 3
36"	4'-5"	4'-6"	9"	8"	4 1/2"	3 # Conn. Bars 5'cc. 3
42"	5'-3"	5'-8"	13"	10"	6 1/2"	3 # Conn. Bars 6'cc. 3
48"	5'-9"	6'-2"	13"	10"	6 1/2"	3 # Conn. Bars 5'cc. 3
54"	6'-3"	6'-8"	13"	10"	6 1/2"	3 # Conn. Bars 5'cc. 3



STANDARD S.W. MANHOLE
Scale: 3/8" = 1'-0"



VIT. PIPE ENCASEMENT

DIMENSIONS

D	A	B
8"	1'-8"	2'-0"
10"	1'-10 1/2"	2'-2 1/2"
12"	2'-1"	2'-5"
15"	2'-5"	2'-9"
18"	2'-9"	3'-1"
21"	3'-1"	3'-5"

MICROFILMED ON APERTURE CARDS

DRAWN BY: [Signature]
TRACED BY: [Signature]
CHECKED BY: [Signature]

1179
DRAWN BY: [Signature]

BC-171

