

INDEX OF SHEETS

SHEET NO.1	TITLE PAGE & LAYOUT
2	PLAN, PROFILE & TYPICAL CROSS SECTIONS OF IMPROVEMENT
3	PLAN, PROFILE, DETAILS & SUMMARY—SEWER
4	SUMMARY—PAVING

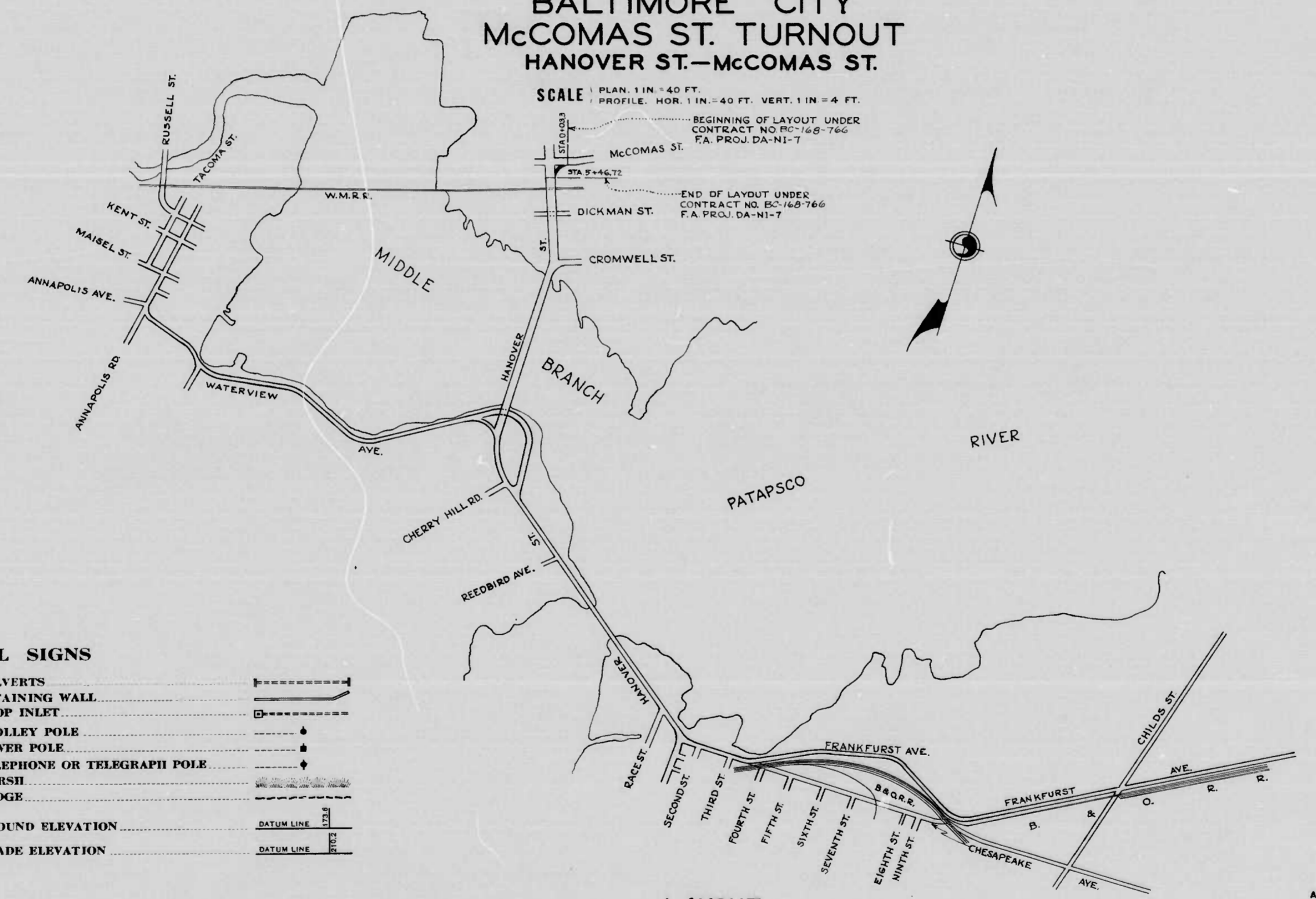
10 MD DA-NI-7 1 4

STATE OF MARYLAND
STATE ROADS COMMISSION

PLAN AND PROFILE OF PROPOSED
STATE HIGHWAY
FEDERAL AID PROJECT NO. DA-NI-7

BALTIMORE CITY
McCOMAS ST. TURNOUT
HANOVER ST.—McCOMAS ST.

SCALE 1 PLAN: 1 IN. = 40 FT.
2 PROFILE: HOR. 1 IN. = 40 FT. VERT. 1 IN. = 4 FT.



LAYOUT
SCALE: 1"=1000'

CONVENTIONAL SIGNS

STATE AND NATIONAL LINE	-----	CULVERTS	-----
COUNTY LINE	-----	RETAINING WALL	-----
CITY OR VILLAGE	-----	DROP INLET	-----
FENCE LINE	-----	TROLLEY POLE	-----
GUARD RAIL	-----	POWER POLE	-----
UNFENCED PROPERTY	-----	TELEPHONE OR TELEGRAPH POLE	-----
RIGHT OF WAY LINE	-----	MARSH	-----
TRAVELED WAY LINE	-----	HEDGE	-----
RAILROADS	-----	GROUND ELEVATION	DATUM LINE
BASE OR SURVEY LINE	-----	GRADE ELEVATION	DATUM LINE

FOR DETAILS OF CULVERTS, ETC. SEE STANDARD SHEET.
STATE SPECIFICATIONS AND STANDARD PLANS ON FILE IN BUREAU OF PUBLIC ROADS.

BC-168

1173

APPROVED *George Cobb*
DISTRICT ENGINEER
PUBLIC ROADS ADMINISTRATION
FEDERAL WORKS AGENCY

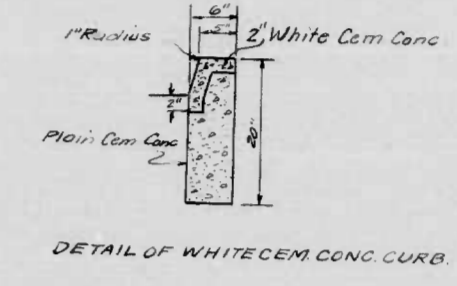
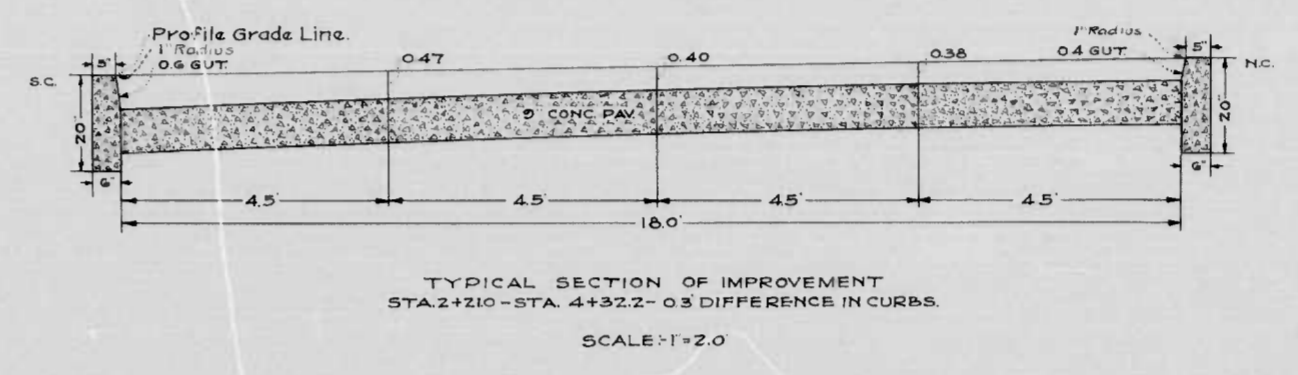
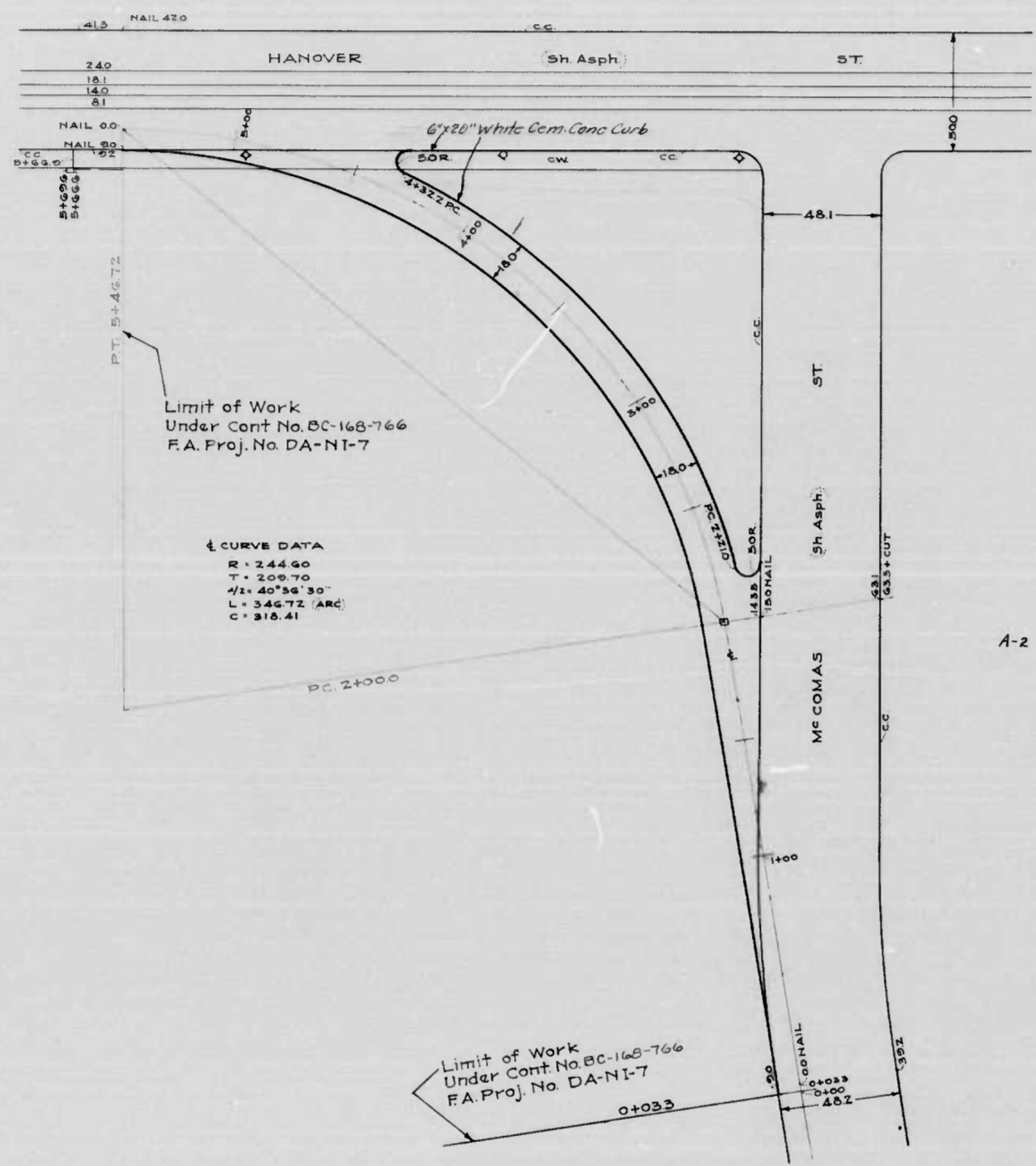
APPROVED *Wilson T. Ballou*
COMMISSIONER
PUBLIC ROADS ADMINISTRATION
FEDERAL WORKS AGENCY

RECOMMENDED FOR APPROVAL

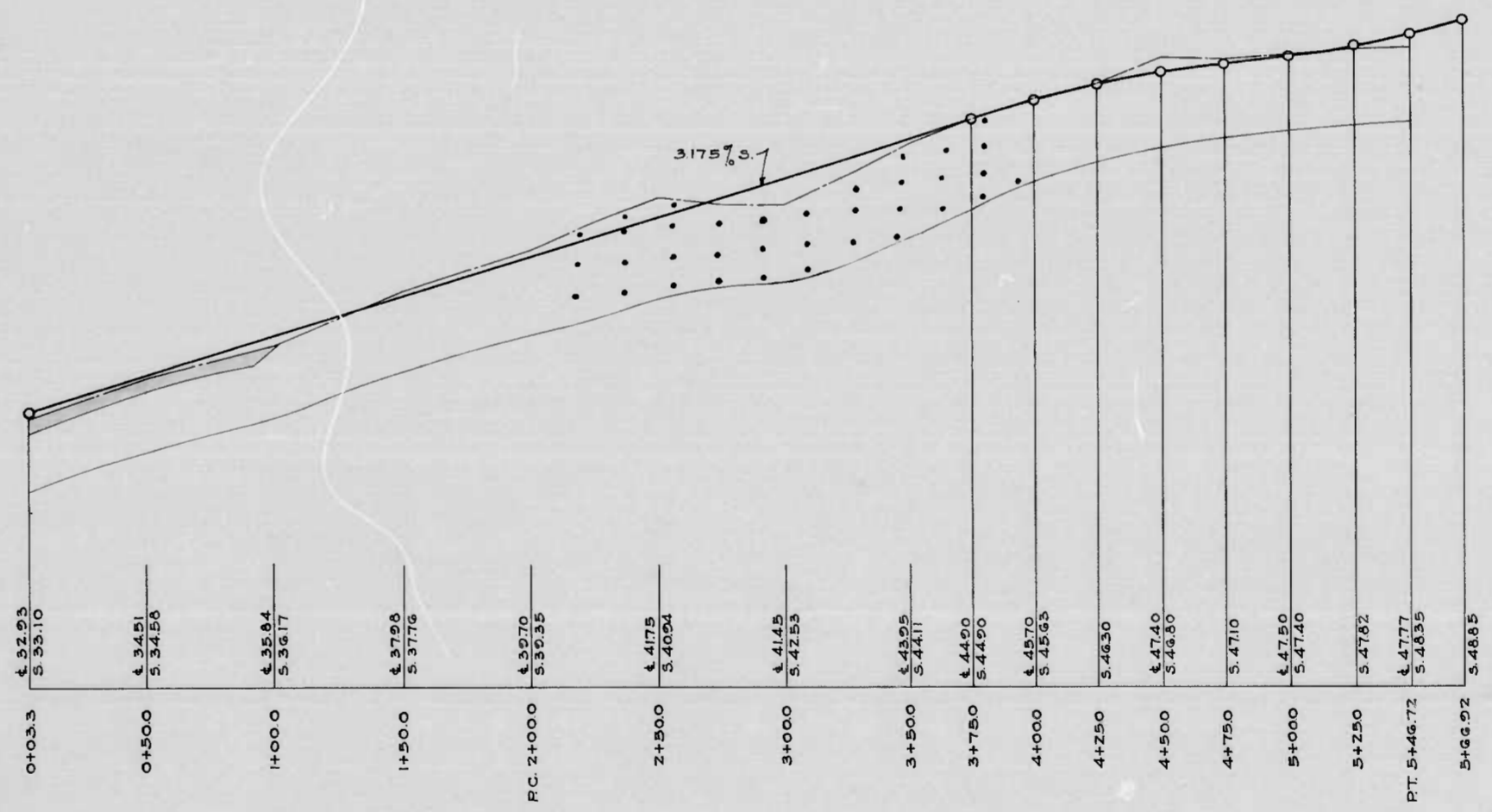
3/27/47

MICROFILMED ON APERTURE CARDS

FED. ROAD DIST. NO.	STATE	FED. AID PROJ. NO.	SHEET NO.	TOTAL SHEETS
10	MD	DA-NI-7	2	4



A-2 Sand with Fines



NOTE - NORTH CURB ELEVATION IS 0.3 ABOVE ELEVATION OF SOUTH CURB.

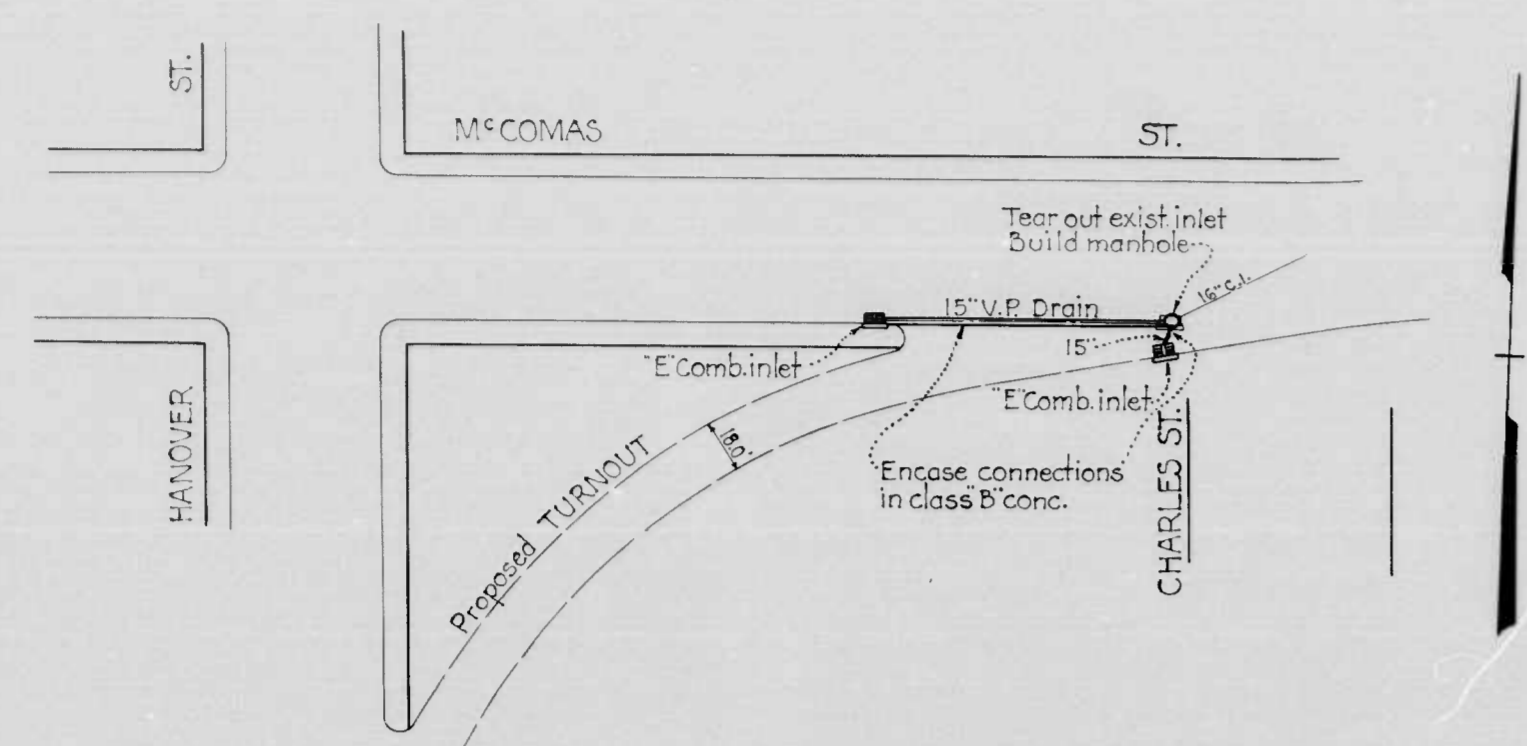
APPROVED: *William T. Ballard*
 MICROLUMED
 CURB
 APERTURE CARDS
 3/1/42

SCALE | PLAN: 1 IN. = 40 FT.
PROFILE: HOR. 1 IN. = 40 FT. VERT. 1 IN. = 4 FT.

REVISIONS	STATE OF MARYLAND STATE ROADS COMMISSION PLANS AND SURVEYS DEPARTMENT
	MCCOMAS ST TURNOUT - HANOVER ST - MCCOMAS ST
	CONT. NO. F. A. P. NO. DA-NI-7 SHEET NO. 2 OF 4
	PREL. TRAC. BY FINAL TRAC. BY

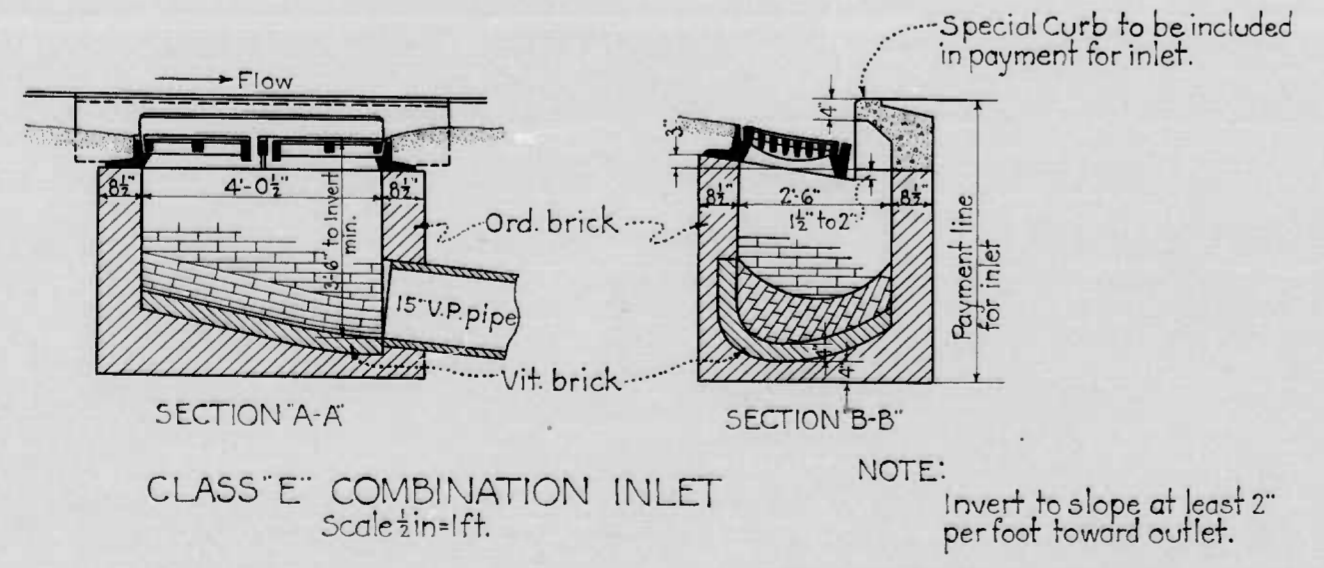
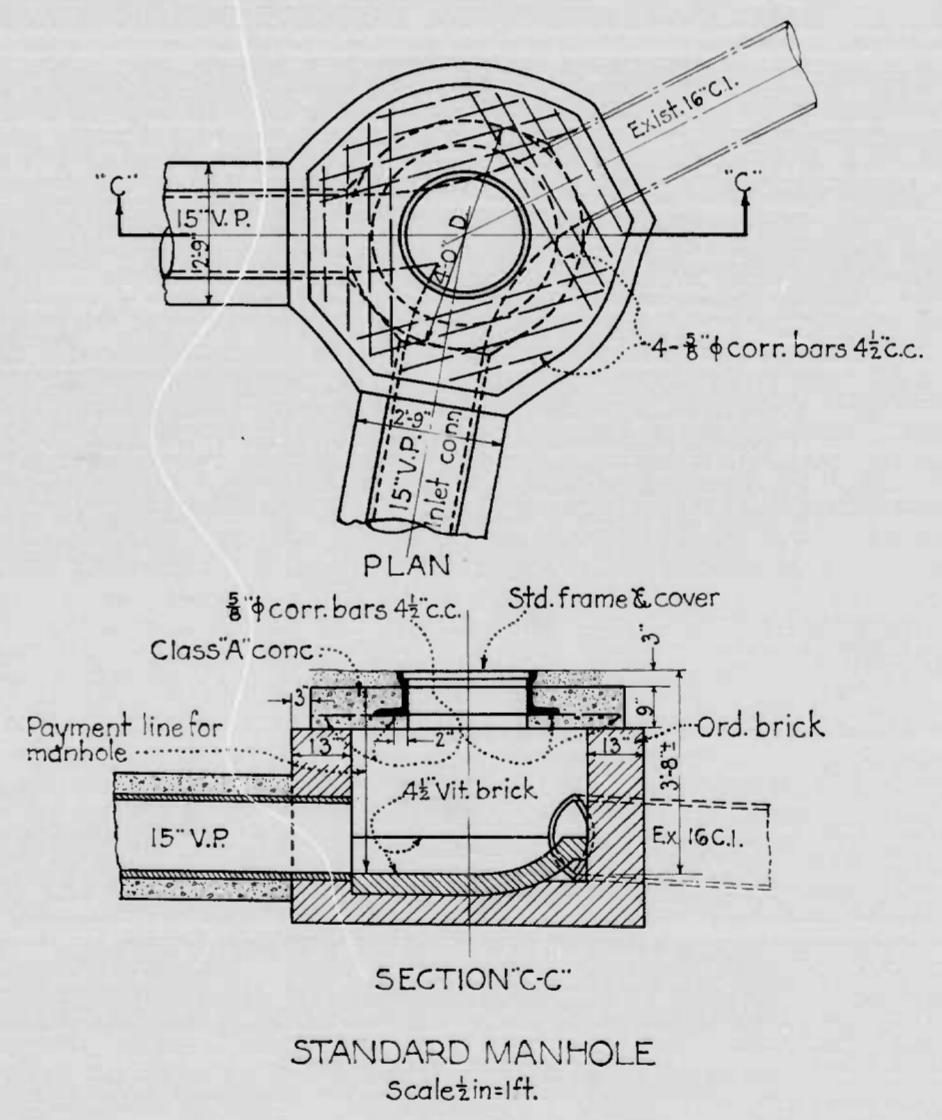
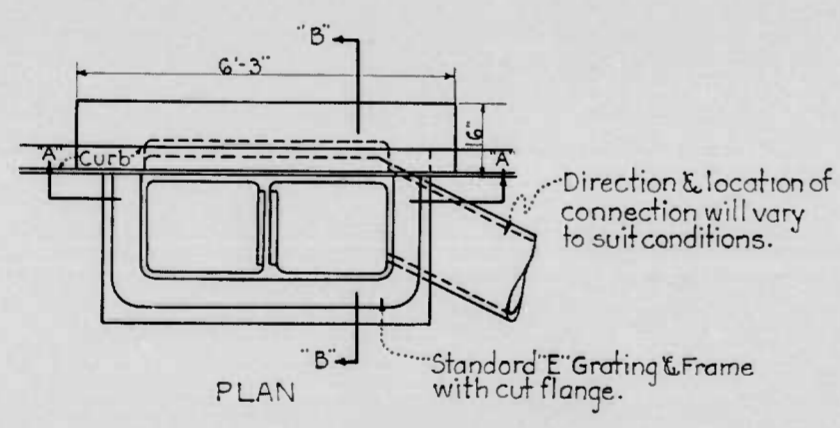
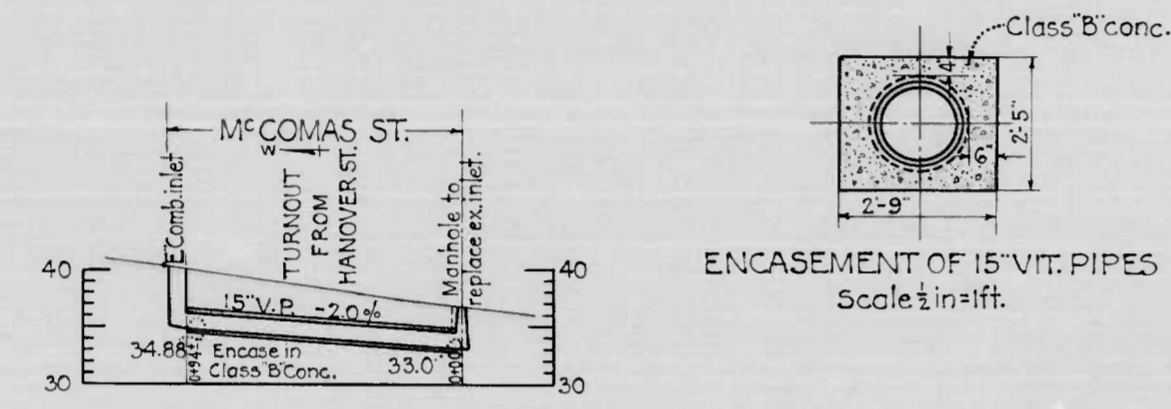
1173

DRAWER NO.



PROPOSAL QUANTITIES

1	94	Lin. ft.	Unclassified excav. and refill above sub-grade for 15" vit. pipe drain, including sheeting etc.
2	6	" "	" " " " for 15" vit. pipe inlet conn.
3	3	" "	For furnishing all material (except frame and cover) and building standard manhole of brick & reinforced concrete masonry.
4	8	" "	Unclassified excav., furnishing materials (except frames, grates, and special curbs) and building Type "E" comb. inlets of brick masonry.
5	94	" "	For furnishing & laying 15" vit. pipe drain with joints of portland cement mortar, measured horizontally
6	6	" "	" " " " inlet conn. with joints of " " " " , measured along the center line of the pipe.
7	20	Cu. yds.	" " " " placing class "B" conc. masonry.



NOTE:
Invert to slope at least 2" per foot toward outlet.

MICROFILMED ON APERTURE CARDS

DRAWN BY *[Signature]*
TRACED BY *[Signature]*
CHECKED BY *[Signature]*

1173
DRAWER *[Redacted]*

BC-168

Sheet No 3 of 4

