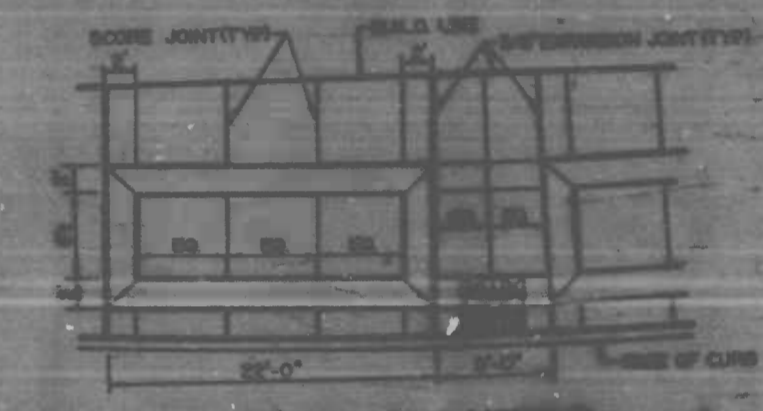
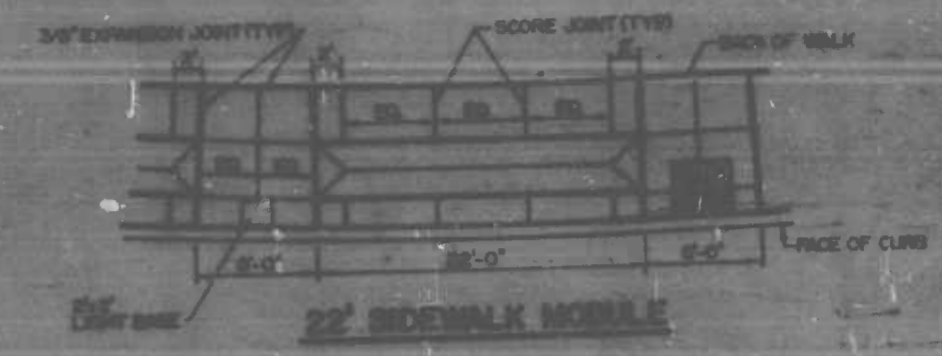


REVISIONS		
NO.	DESCRIPTION	DATE

**NOTES**

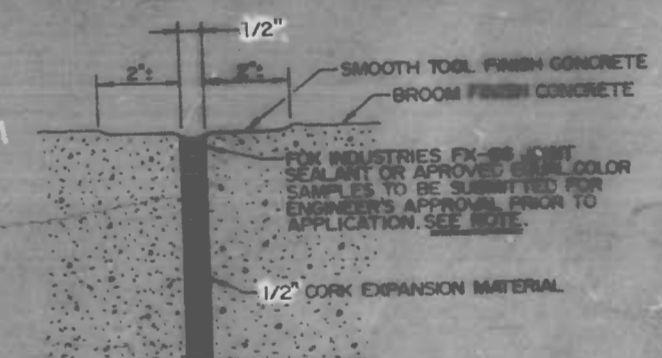
1. ALL CONCRETE SHALL BE PLACED AND FINISHED IN ACCORDANCE WITH THE SPECIFICATIONS OF THE STANDARD SPECIFICATIONS FOR PUBLIC WORKS, LATEST EDITION, AS APPLICABLE. ALL CONCRETE SHALL BE PLACED AND FINISHED IN ACCORDANCE WITH THE SPECIFICATIONS OF THE STANDARD SPECIFICATIONS FOR PUBLIC WORKS, LATEST EDITION, AS APPLICABLE. ALL CONCRETE SHALL BE PLACED AND FINISHED IN ACCORDANCE WITH THE SPECIFICATIONS OF THE STANDARD SPECIFICATIONS FOR PUBLIC WORKS, LATEST EDITION, AS APPLICABLE.



**TYPICAL SCORING PATTERN**



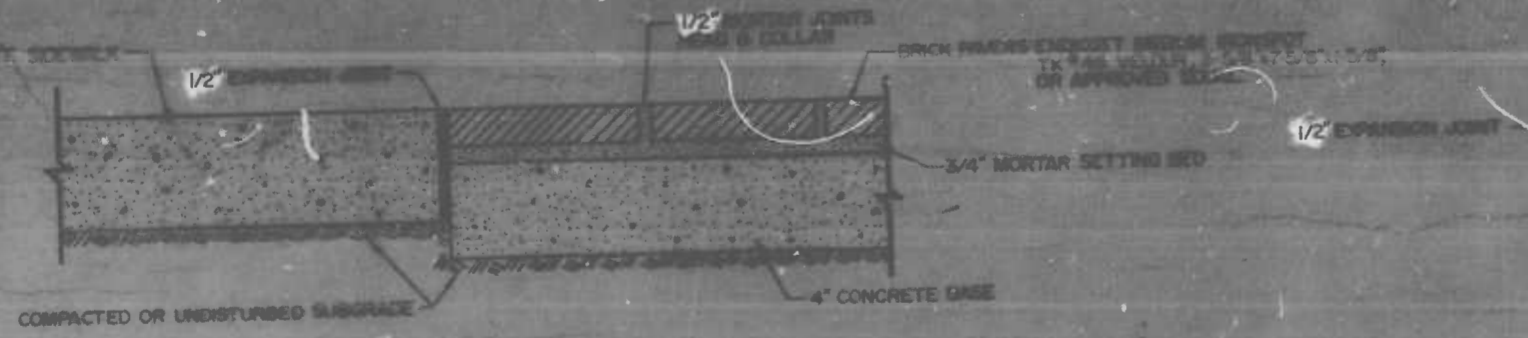
AND EAST SIDE FROM MEDIAN TO ALL CURB CHANGES



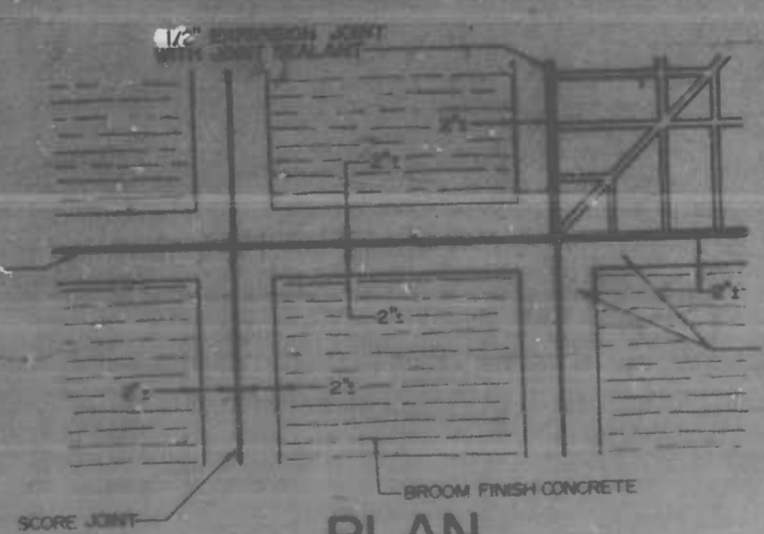
NOTE: JOINT SEALANT REQUIRED ONLY AT BRICK TO BRICK AND/OR BRICK TO CONCRETE EXPANSION JOINTS. CONCRETE TO CONCRETE EXPANSION JOINTS WILL NOT HAVE A JOINT SEALANT.

**TYPICAL SECTION EXPANSION JOINT**

CROSS REFERENCES	
ITEM	SHEET NO.
TREE PIT DETAILS	9



**TYPICAL SECTION SIDEWALK PAVING**



**PLAN**

**JOINT DETAILS EXPANSION & SCORING**

CITY OF BALTIMORE  
DEPARTMENT OF PUBLIC WORKS  
BUREAU OF HIGHWAYS  
MISCELLANEOUS DETAILS

HOWARD PARK  
COMMERCIAL DISTRICT  
SIDEWALK PAVING DETAILS  
4700 BLOCK GWYNN OAK AVE.

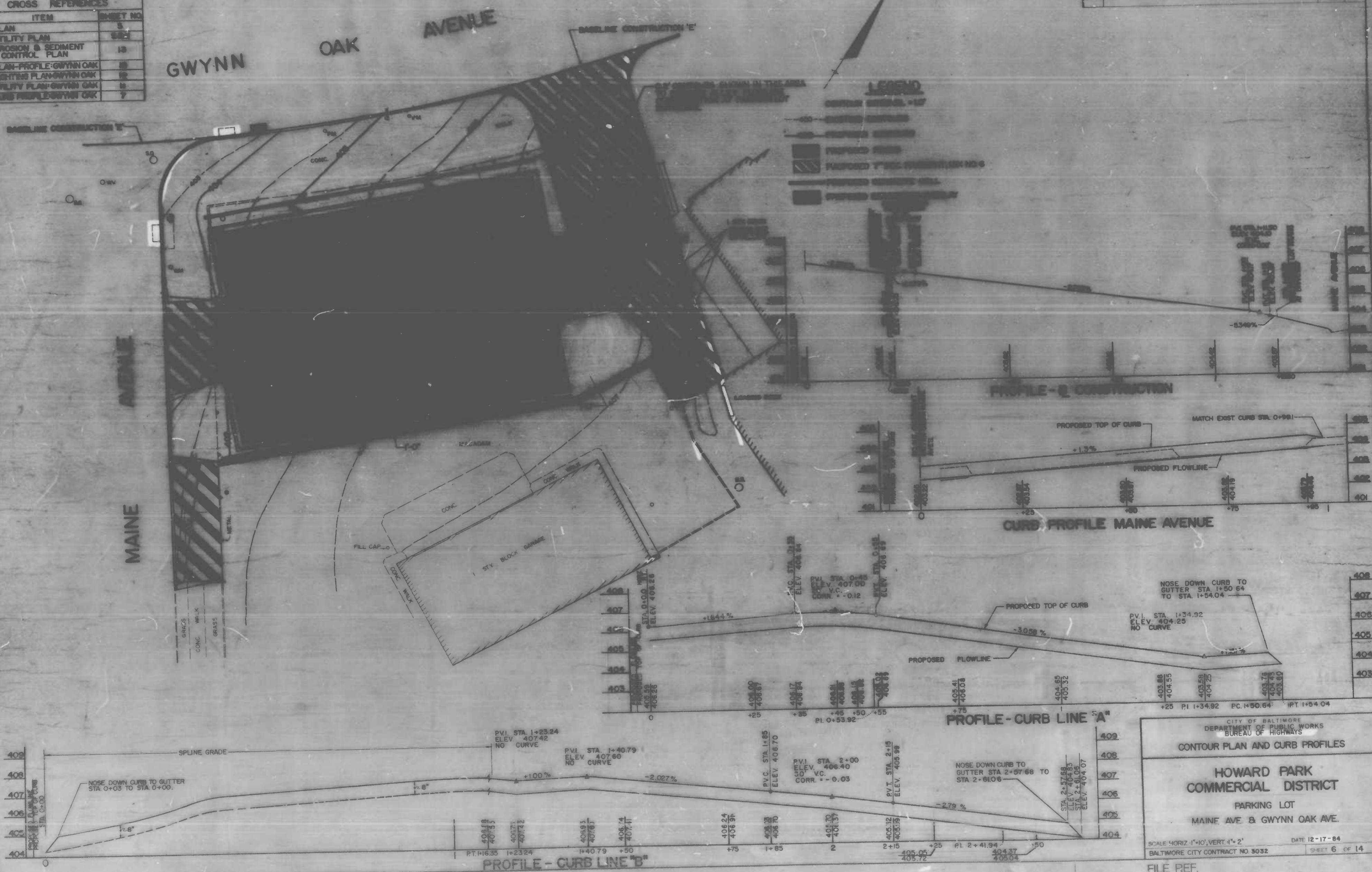
SCALE: NOT TO SCALE  
BALTIMORE CITY CONTRACT NO. 3032  
DATE 12-17-84  
SHEET 2 OF 14

FILE REF.



CROSS REFERENCES	
ITEM	SHEET NO.
PLAN	5
UTILITY PLAN	5B2
EROSION & SEDIMENT CONTROL PLAN	13
PLAN - PROFILE: GWYNN OAK	19
LIGHTING PLAN: GWYNN OAK	19
UTILITY PLAN: GWYNN OAK	19
CURB PROFILE: GWYNN OAK	7

REVISIONS	
NO.	DESCRIPTION



CITY OF BALTIMORE  
 DEPARTMENT OF PUBLIC WORKS  
 BUREAU OF HIGHWAYS

CONTOUR PLAN AND CURB PROFILES

**HOWARD PARK  
 COMMERCIAL DISTRICT**

PARKING LOT  
 MAINE AVE & GWYNN OAK AVE.

SCALE: HORIZ. 1"=10'; VERT. 1"=2'  
 DATE 12-17-84  
 BALTIMORE CITY CONTRACT NO. 3032  
 SHEET 6 OF 14

FILE REF.

REVISIONS		
NO.	DESCRIPTION	DATE BY

CITY OF BALTIMORE  
DEPARTMENT OF PUBLIC WORKS  
BUREAU OF HIGHWAYS  
CURB - PROFILE

**HOWARD PARK  
COMMERCIAL DISTRICT**

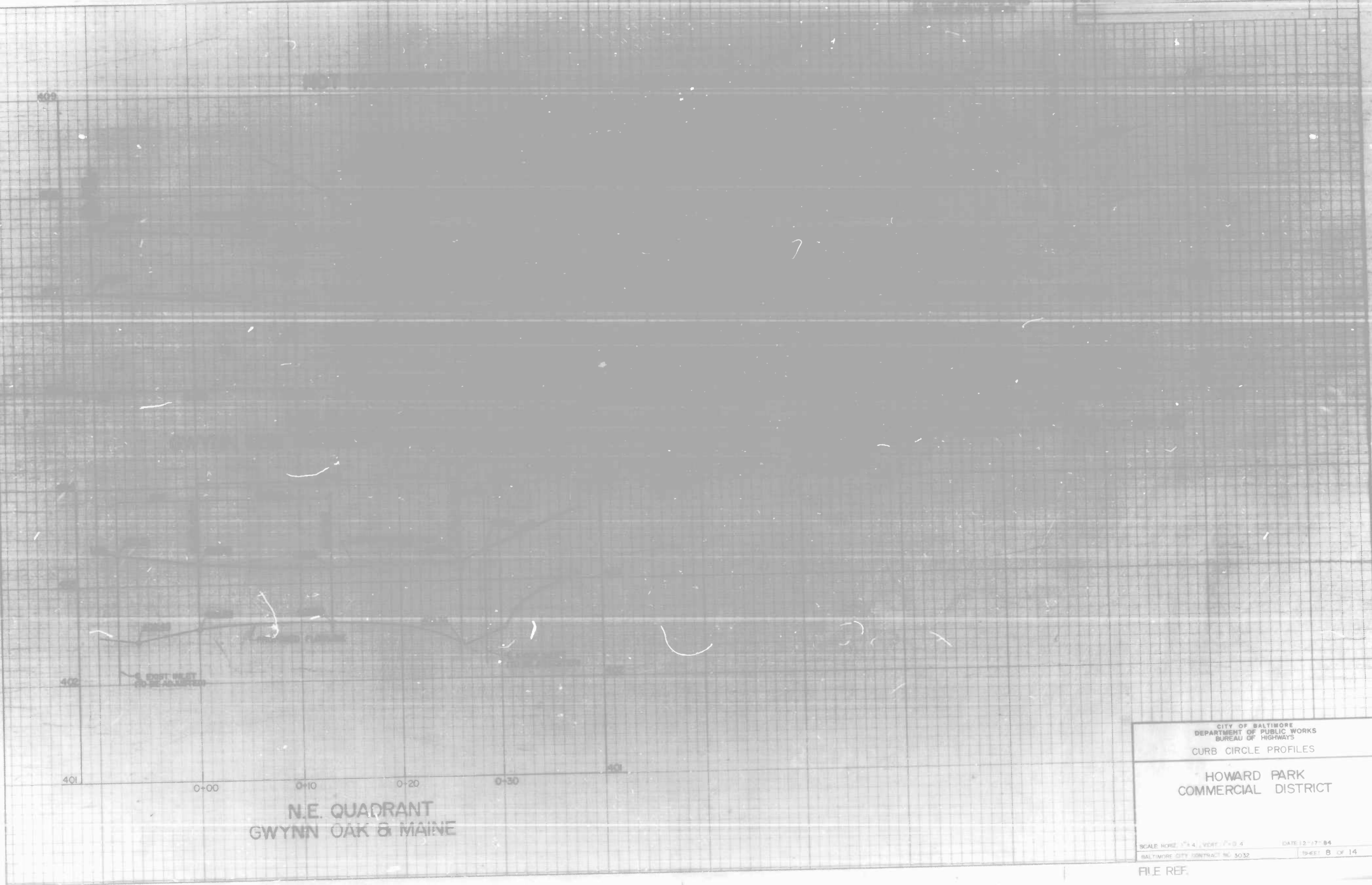
GWYNN OAK AVENUE  
WOODBINE AVE. TO LIBERTY HEIGHTS AVE.

SCALE HORIZ. 1" = 20' VERT. 1" = 2'  
DATE 12-17-84  
BALTIMORE CITY CONTR. NO. 3032 SHEET 7 OF 14

FILE REF.

FILE REF.

REVISIONS		DATE	BY
NO.	DESCRIPTION		



N.E. QUADRANT  
GWYNN OAK & MAINE

CITY OF BALTIMORE  
DEPARTMENT OF PUBLIC WORKS  
BUREAU OF HIGHWAYS  
CURB CIRCLE PROFILES

HOWARD PARK  
COMMERCIAL DISTRICT

SCALE HORIZ. 1" = 40' VERT. 1" = 4'  
BALTIMORE CITY CONTRACT NO. 5032 DATE 12-17-84  
SHEET 8 OF 14

FILE REF.

REVISIONS		DATE	BY
NO.	DESCRIPTION		



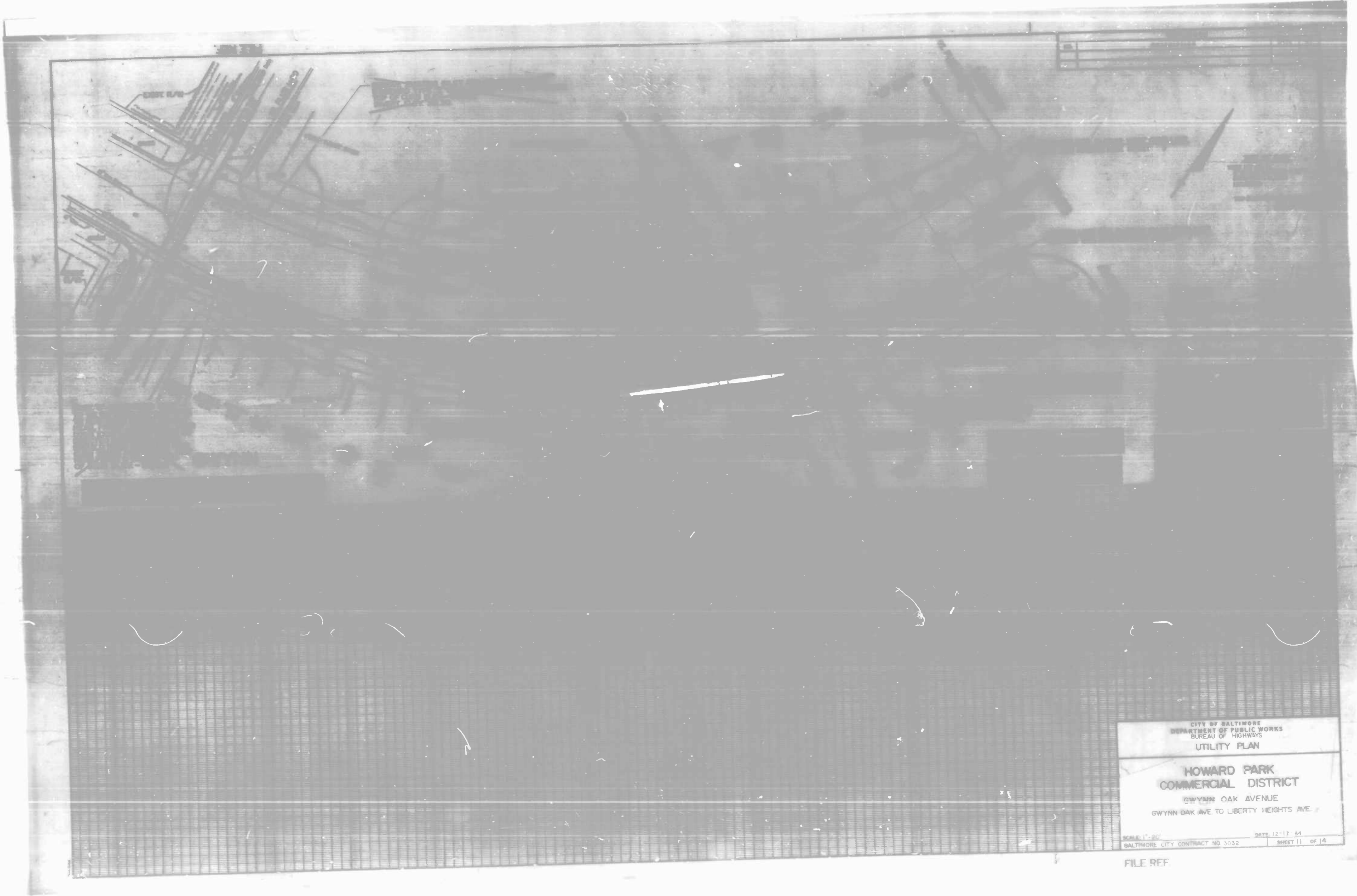
CITY OF BALTIMORE  
 DEPARTMENT OF PUBLIC WORKS  
 BUREAU OF HIGHWAYS  
 PLAN - PROFILE

**HOWARD PARK  
 COMMERCIAL DISTRICT**

GWYNN OAK AVENUE  
 WOODBINE AVE. TO LIBERTY HEIGHTS AVE.

SCALE HORIZ. 1"=20' VERT. 1"=4'  
 BALTIMORE CITY CONTRACT NO. 3032 DATE 12-17-84  
 SHEET 10 OF 14

FILE REF.



CITY OF BALTIMORE  
DEPARTMENT OF PUBLIC WORKS  
BUREAU OF HIGHWAYS  
UTILITY PLAN

HOWARD PARK  
COMMERCIAL DISTRICT  
GWYNN OAK AVENUE  
GWYNN OAK AVE. TO LIBERTY HEIGHTS AVE.

SCALE: 1" = 20'  
BALTIMORE CITY CONTRACT NO. 3032      DATE: 12-17-84  
SHEET 11 OF 14

FILE REF.

**CITY OF BALTIMORE**  
**DEPARTMENT OF PUBLIC WORKS**  
**BUREAU OF HIGHWAYS**  
**NEIGHBORHOOD PROGRESS ADMINISTRATION/DHCD**  
**COMMERCIAL REVITALIZATION PROGRAM**



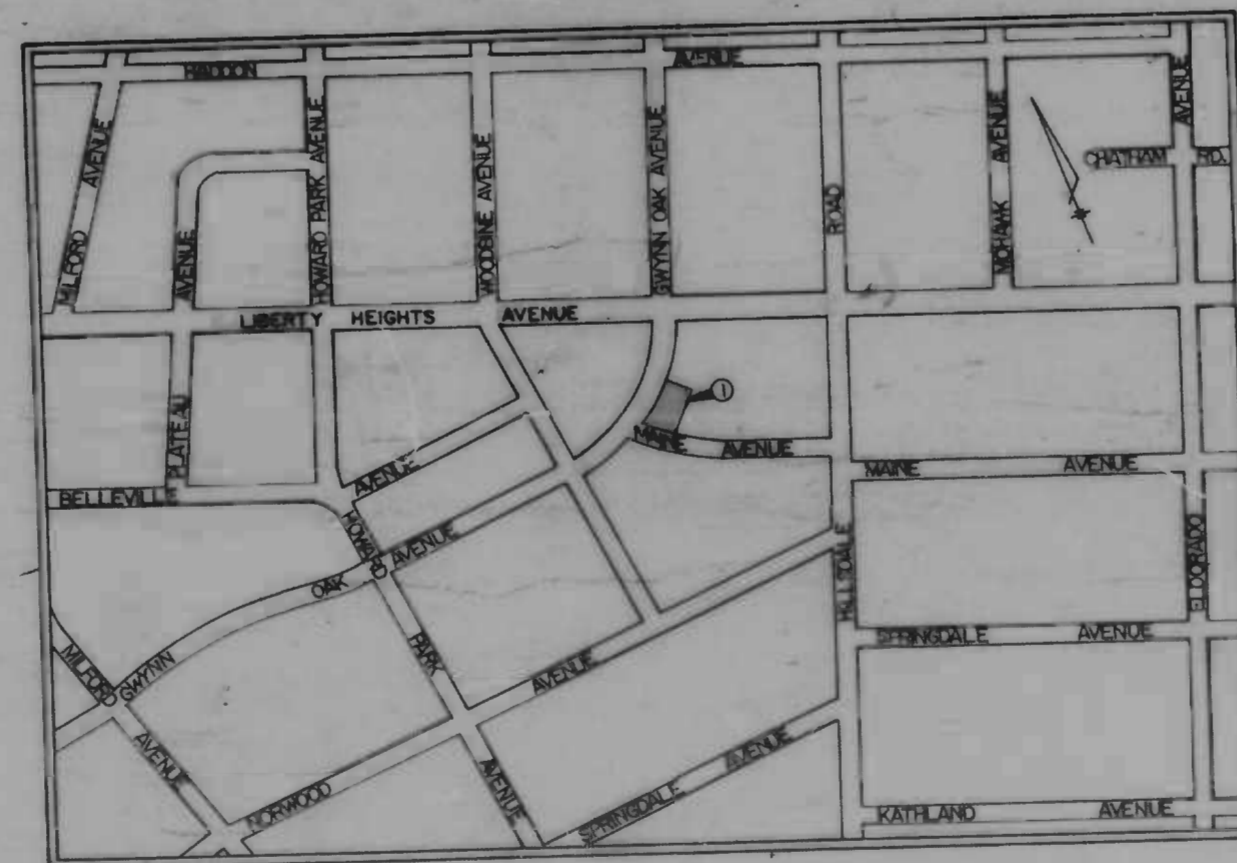
**GRADING, CURBING, PAVING, DRAINAGE AND UTILITIES**  
**HOWARD PARK COMMERCIAL DISTRICT**  
 CITY OF BALTIMORE BUREAU OF HIGHWAYS CONTRACT NO.3032

**INDEX OF SHEETS**

SHEET NO.	DESCRIPTION
1	TITLE SHEET
2-4	MISCELLANEOUS DETAILS
5	PLAN & DETAILS
6	CONTOUR PLAN & CURB PROFILES
7-8	CURB PROFILES
9	UTILITY PLAN (PARKING LOT)
10	PLAN-PROFILE (GWYNN OAK AVE)
11	UTILITY PLAN (GWYNN OAK AVE)
12	LIGHTING PLAN (GWYNN OAK AVE)
13	EROSION AND SEDIMENT CONTROL PLAN
14	EROSION AND SEDIMENT CONTROL DETAILS

INDEX TO LIMITS OF WORK	
①	PARKING LOT, MAINE AVE. @ GWYNN OAK AVE.

FIELD SURVEY BOOKS	
NO.	DESCRIPTION
2031	TOPO: LOT AT N.E. CORNER GWYNN OAK & MAINE



LOCATION MAP  
SCALE: 1" = 300'

DEPARTMENT OF PUBLIC WORKS

BUREAU OF HIGHWAYS  
 APPROVED: *[Signature]*  
 CHIEF, HIGHWAY ENGINEERING DIVISION  
 APPROVED: *[Signature]*  
 CHIEF, ENVIRONMENTAL SERVICES DIVISION

OFFICE OF TRANSPORTATION  
 APPROVED: *[Signature]*  
 DIRECTOR OF OFFICE OF TRANSPORTATION

APPROVED:  
*[Signature]*  
 DIRECTOR OF PUBLIC WORKS

APPROVED:  
*[Signature]*  
 HEAD, BUREAU OF HIGHWAYS

HURST-ROSCHKE ENGINEERS, INC.  
 CONSULTING ENGINEERS  
 50 SCOTT ADAM ROAD  
 SUITE 103  
 COCKEYSVILLE, MD.



WILLIAM K. SMITH, P.E.

S. OF R.	R. W.	GRADE	HIGHWAY	STRUCTURAL	DRAINAGE	LIGHTING	CONDUIT	SEGMENTATION	OFFICE OF	WASTE WATER	WATER
REVIEW	RELEASE	EST.	DESIGN					AND EROSION	TRANSPORTATION	ENGINEERING	ENGINEERING
BY: <i>[Signature]</i>	<i>[Signature]</i>	<i>[Signature]</i>			<i>[Signature]</i>	<i>[Signature]</i>	<i>[Signature]</i>	<i>[Signature]</i>	<i>[Signature]</i>	<i>[Signature]</i>	<i>[Signature]</i>
DATE: 9/10/85	9/10/85	9/10/85			9/12/85	9/20/85	9/21/85	9/12/85	9/12/85	9/10/85	9/21/85





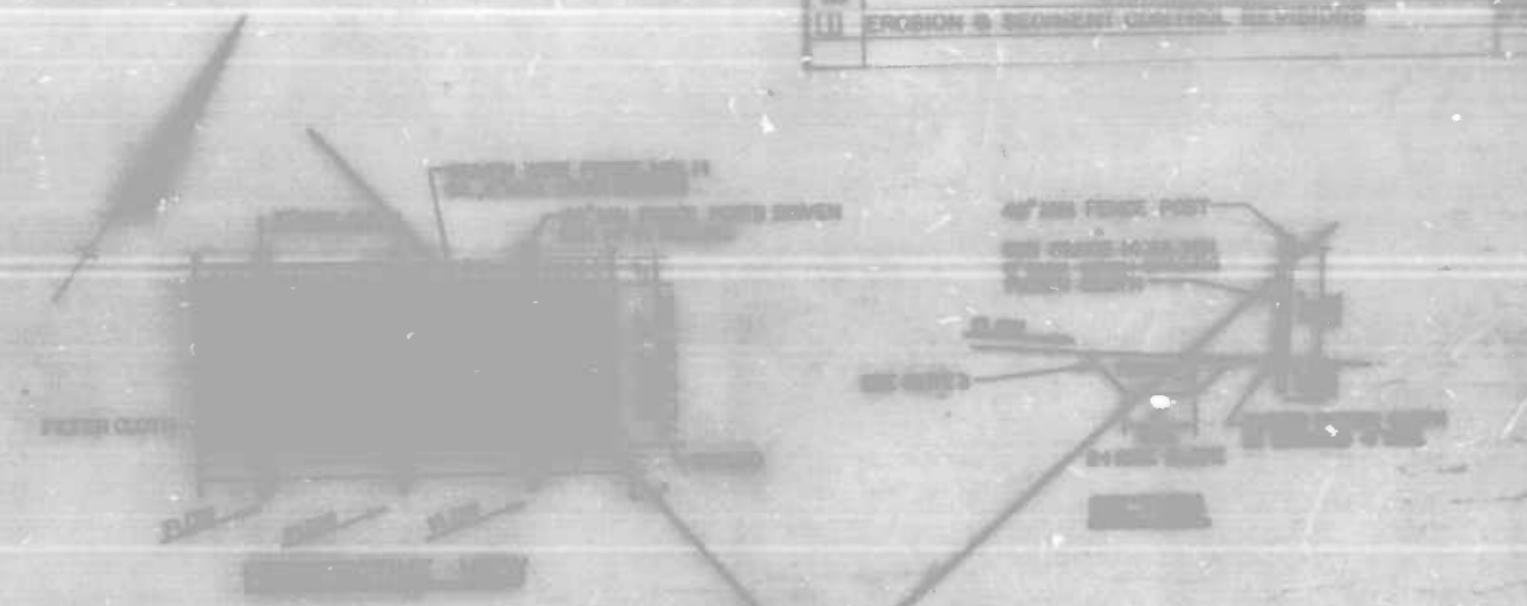
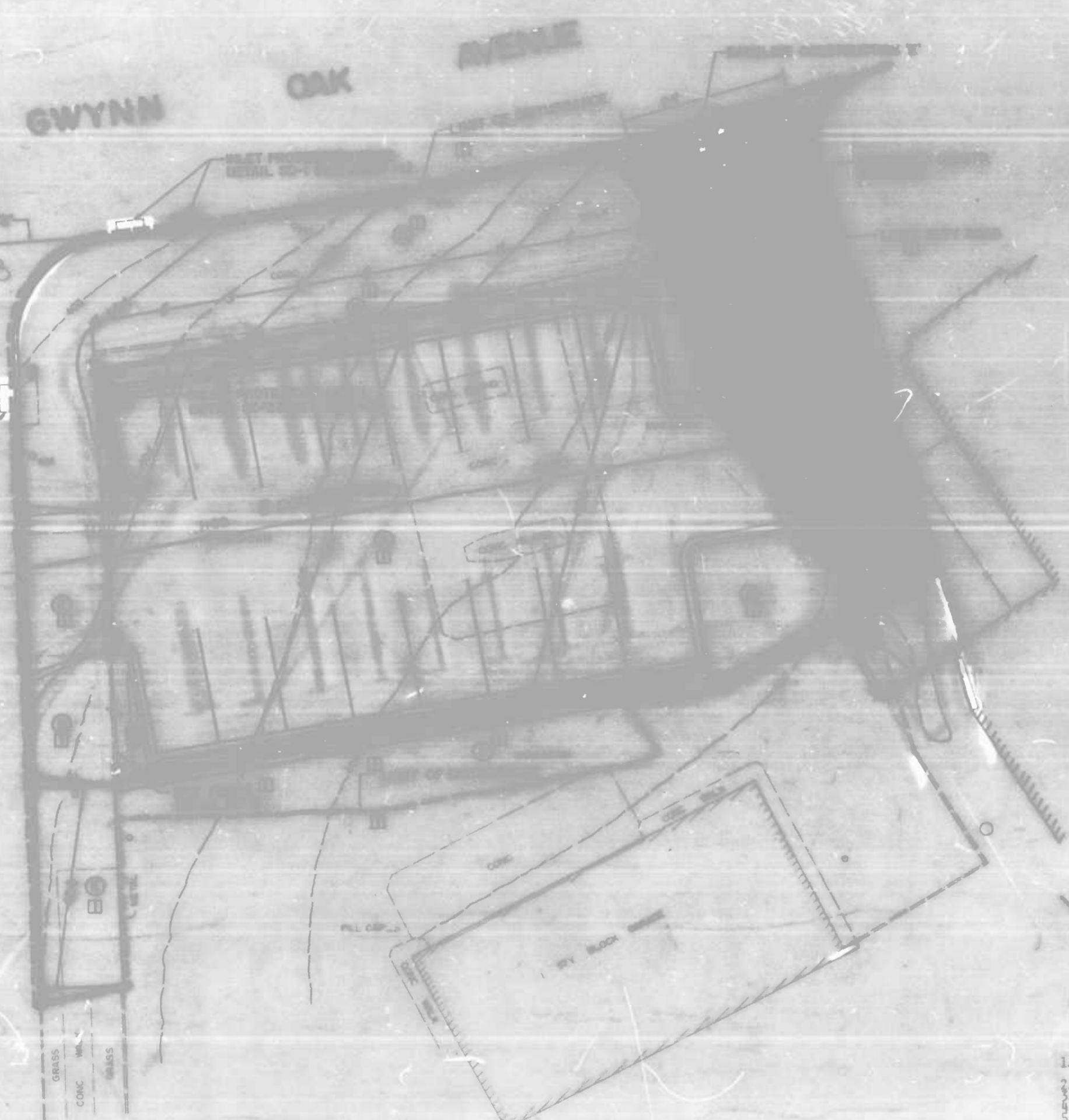
CITY OF BOSTON  
 DEPARTMENT OF PUBLIC WORKS  
 BUREAU OF STREET LIGHTS  
**LIGHTING PLAN**  
**HOWARD PARK**  
**COMMERCIAL DISTRICT**  
 GWYNN OAK AVENUE  
 WOODBINE AVE. TO LIBERTY HEIGHTS AVE.

SCALE: 1" = 100'-0"  
 DATE: 12-17-84  
 SHEET 12 OF 14

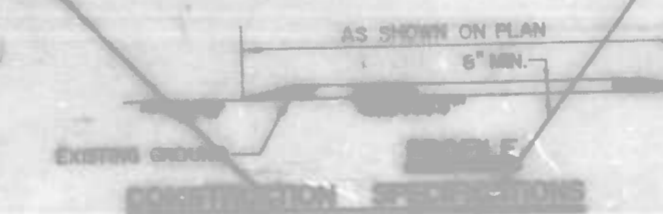
FILE REF.

FILE REF.

NO.	DESCRIPTION
(1)	EROSION & SEDIMENT CONTROL MEASURES



1. STONE SIZE - USE MSHA SIZE NO. 2 (2 1/2" TO 1") OR ANSITO DESIGNATION #3, SIZE NO. 2 (2 1/2" TO 1") - USE CRUSHED STONE.
2. LENGTH - AS EFFECTIVE, BUT NOT LESS THAN 20 FEET.
3. THICKNESS - 6" MIN.
4. WIDTH - NOT LESS THAN 4 FEET FOR INGRESS OR EGRESS.
5. MAINTENANCE - WHEN NECESSARY, WHEELS SHALL BE CLEARED TO REMOVE SEDIMENT PRIOR TO ENTRANCE ONTO PUBLIC RIGHT-OF-WAY. WHEN MAINTENANCE IS REQUIRED, IT SHALL BE DONE AS IN SECTION 10.04.01 WITH CRUSHED STONE WHICH TAKES INTO AN APPROVED METHOD OF STORM DRAINAGE, OR WATERCOURSE THROUGH USE OF SAND BAGS, GRAVELS, BOWLS OR OTHER APPROVED METHODS.
6. MAINTENANCE - THE ENTRANCE SHALL BE MAINTAINED IN A CONDITION WHICH WILL PREVENT TRACKING OR FLOWING OF SEDIMENT ONTO PUBLIC RIGHT-OF-WAY. THIS MAY REQUIRE PERIODIC TOP DRESSING WITH ADDITIONAL STONE AS CONDITIONS DEMAND AND REPAIR AND/OR CLEANOUT OF ANY FEATURES USED TO TRAP SEDIMENT. ALL SEDIMENT SPILLED, DROPPED, WASHED OR TRACKED ONTO PUBLIC RIGHTS-OF-WAY MUST BE REMOVED IMMEDIATELY.



1. STONE SIZE - USE MSHA SIZE NO. 2 (2 1/2" TO 1") OR ANSITO DESIGNATION #3, SIZE NO. 2 (2 1/2" TO 1") - USE CRUSHED STONE.
2. LENGTH - AS EFFECTIVE, BUT NOT LESS THAN 20 FEET.
3. THICKNESS - 6" MIN.
4. WIDTH - NOT LESS THAN 4 FEET FOR INGRESS OR EGRESS.
5. MAINTENANCE - WHEN NECESSARY, WHEELS SHALL BE CLEARED TO REMOVE SEDIMENT PRIOR TO ENTRANCE ONTO PUBLIC RIGHT-OF-WAY. WHEN MAINTENANCE IS REQUIRED, IT SHALL BE DONE AS IN SECTION 10.04.01 WITH CRUSHED STONE WHICH TAKES INTO AN APPROVED METHOD OF STORM DRAINAGE, OR WATERCOURSE THROUGH USE OF SAND BAGS, GRAVELS, BOWLS OR OTHER APPROVED METHODS.
6. MAINTENANCE - THE ENTRANCE SHALL BE MAINTAINED IN A CONDITION WHICH WILL PREVENT TRACKING OR FLOWING OF SEDIMENT ONTO PUBLIC RIGHT-OF-WAY. THIS MAY REQUIRE PERIODIC TOP DRESSING WITH ADDITIONAL STONE AS CONDITIONS DEMAND AND REPAIR AND/OR CLEANOUT OF ANY FEATURES USED TO TRAP SEDIMENT. ALL SEDIMENT SPILLED, DROPPED, WASHED OR TRACKED ONTO PUBLIC RIGHTS-OF-WAY MUST BE REMOVED IMMEDIATELY.

**STABILIZED CONSTRUCTION ENTRANCE**  
(NOT TO SCALE)

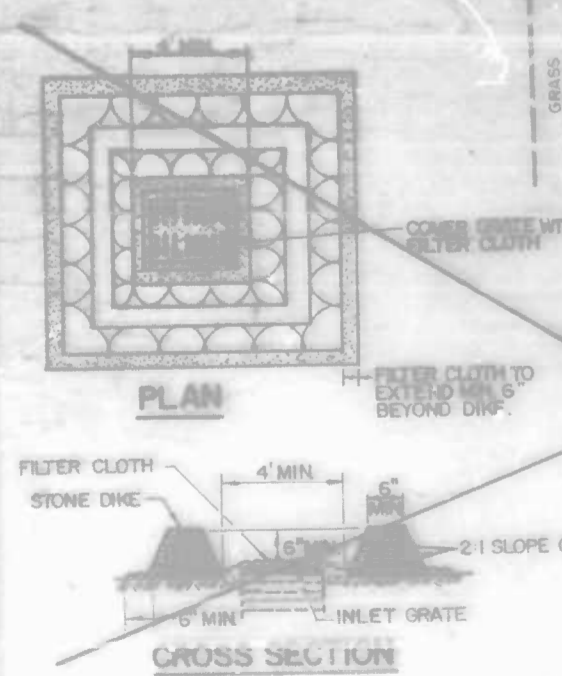
EROSION AND SEDIMENT CONTROL  
APPROVED  
*Frederick M. ...*  
MEMBER OF REPRESENTATIVE ...  
10 8 85

CITY OF BALTIMORE  
DEPARTMENT OF PUBLIC WORKS  
BUREAU OF HIGHWAYS

**EROSION & SEDIMENT CONTROL PLAN**

**HOWARD PARK COMMERCIAL DISTRICT**

SCALE: 1"=10'  
BALTIMORE CITY CONTRACT NO 3032  
DATE: 12-17-84  
SHEET 13 OF 14



**INLET PROTECTION**  
(NOT TO SCALE)

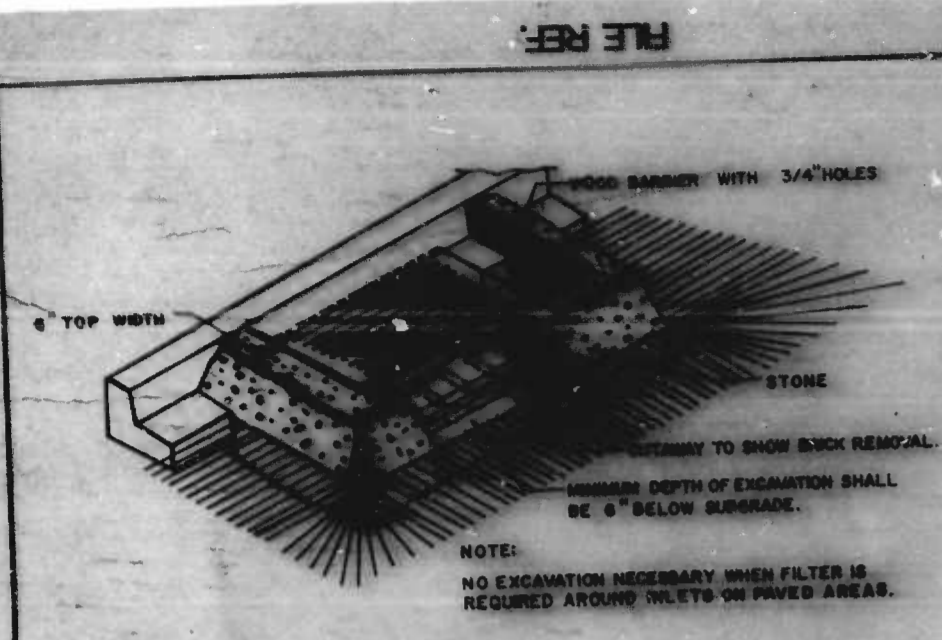
**CONSTRUCTION SPECIFICATIONS**

1. THE STRUCTURE SHALL BE INSPECTED AFTER EACH RAIN AND REPAIRS MADE AS NEEDED.

- LEGEND**
- CONTOUR INTERVAL = 1.0'
  - 400— EXISTING CONTOURS
  - - - 400 - - - PROPOSED CONTOURS
  - STABILIZED CONSTRUCTION ENTRANCE
  - SILT FENCE
  - Ⓐ STABILIZATION SCHEDULE AREAS
  - - - LIMITS OF DISTURBANCE

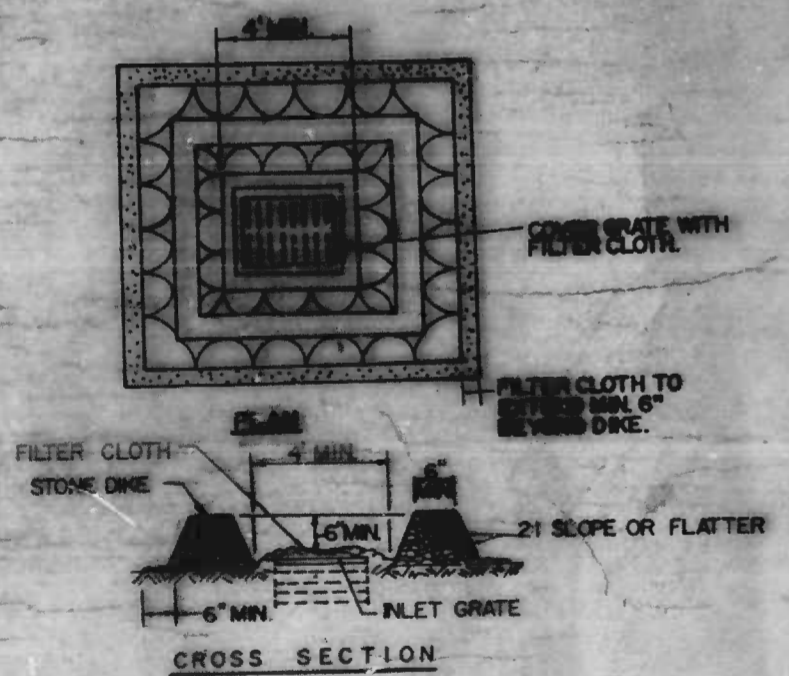
NOTE: SEE SHEET 4 FOR ADDITIONAL EROSION & SEDIMENT CONTROL NOTES

REVISIONS		DATE	BY
NO.	DESCRIPTION		



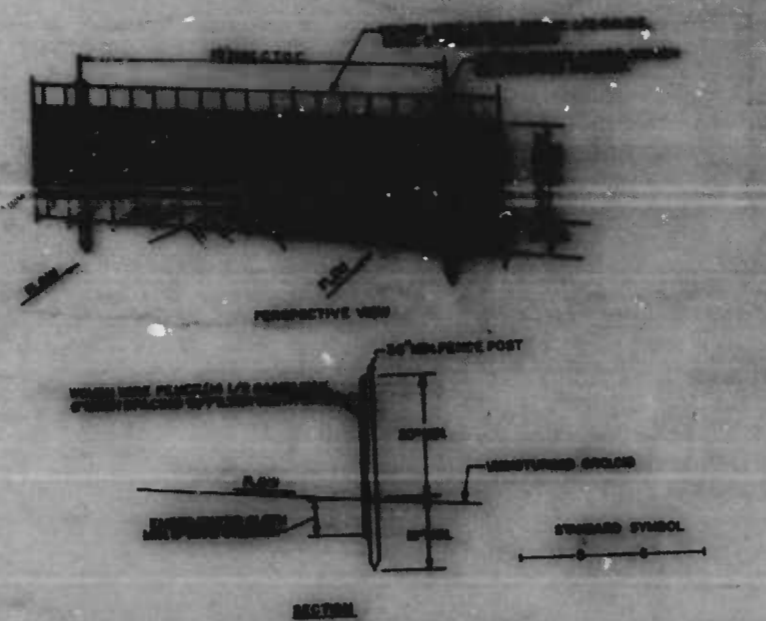
- CONSTRUCTION SPECIFICATIONS**
- Structure shall be inspected after each storm and repairs made as needed.
  - Construction Operations shall be carried out in such a manner that erosion and water pollution is minimized.
  - The structure shall be removed when drainage area has been properly stabilized.
  - The crushed stone used in the outlet shall meet ASTM Designation M33 size no. 2 or 24 or the equivalent with a MSA no. 2. Gravel meeting the above gradation may be used if crushed stone is not available. Crushed Run is not acceptable.

**INLET PROTECTION  
DETAIL SC-1**



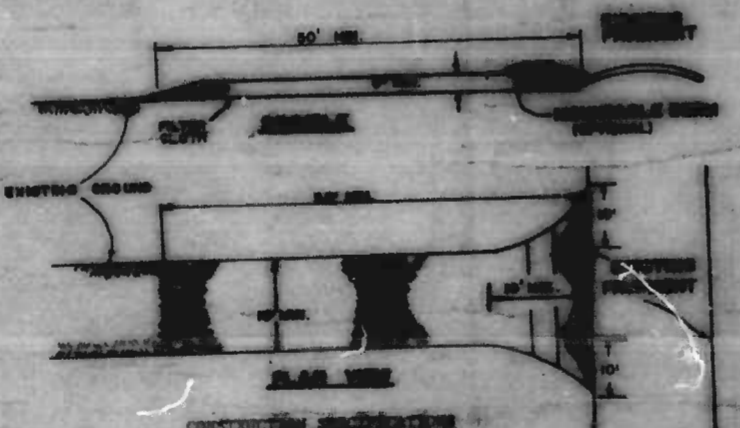
- CONSTRUCTION SPECIFICATIONS**
- Stone for the dike shall be crushed stone. Gravel may be used if crushed stone is not available. The stone shall meet MSA size no. 2 or ASTM designation M33 size no. 2 or 24. Crushed Run is not acceptable.
  - Filter cloth shall be Poly-Felam X or approved equal.
  - The structure shall be inspected after each rain and repairs made as needed.

**INLET PROTECTION  
DETAIL SC-2**



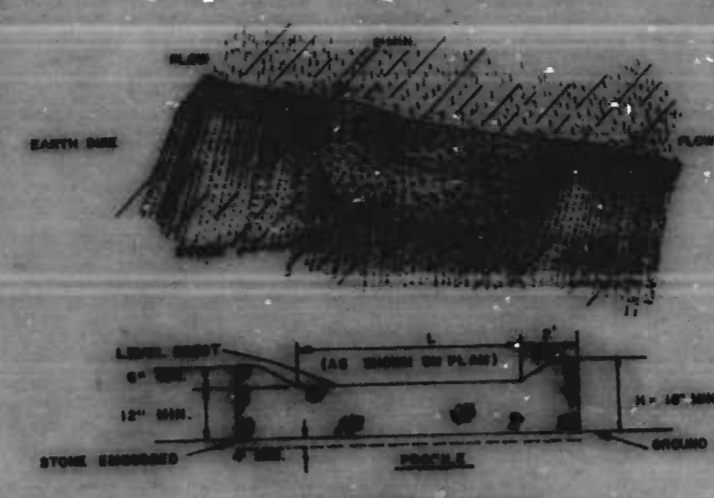
- CONSTRUCTION NOTES FOR FABRICATED SILT FENCE**
- Woven Wire Fences to be fastened securely to fence posts with wire ties or staples.
  - Filter Cloth to be fastened securely to Woven Wire Fences with chain spaced every 24" at top and mid sections.
  - When two sections of Filter Cloth abut each other, they shall be lapped by six inches and stapled.
  - Maintenance shall be performed as needed and material removed when "bulges" develop in the silt fence.

**SILT FENCE  
DETAIL SC-3**



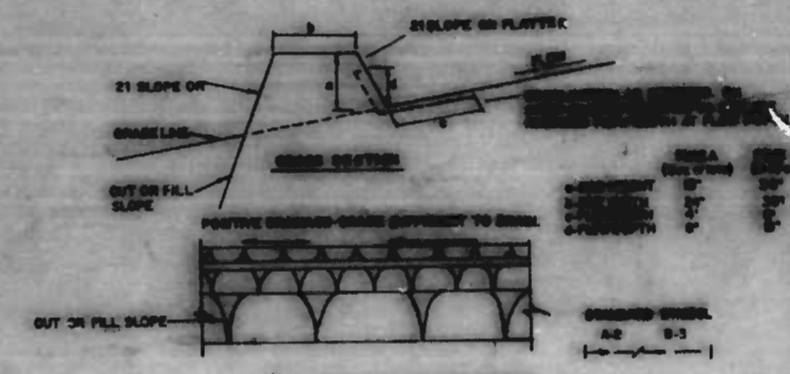
- CONSTRUCTION SPECIFICATIONS**
- Stone Size - Use 2" stone, or equivalent of recycled concrete equivalent.
  - Length - As required, but not less than 50 feet (except on a single full-ditch lot where a 30 foot minimum length would apply).
  - Thickness - Not less than six (6) inches.
  - Width - Ten (10) feet minimum, but not less than the full width of public street lanes or access easements.
  - Filter Cloth - Will be placed over the entire area prior to placing of stone. Filter will not be required on a whole family residential lot.
  - Surface Water - All surface water flowing or about to flow toward construction entrance shall be piped across the entrance. If piping is impractical, a manhole with a 24" slope will be permitted.
  - Maintenance - The entrance shall be maintained in a condition which will prevent tracking or flowing of sediments onto public rights-of-way. This may require periodic top dressing with additional stone as conditions demand and repairs and/or cleaning of any structure used to trap sediment. All sediment spilled, tracked, or flowed onto public rights-of-way must be removed immediately.
  - Warning - Wheels shall be cleaned to remove sediment prior to entrance onto public rights-of-way. Run washing is required, so shall be done on area stabilized with stone and which flows into an approved sediment trapping device.
  - Periodic inspection and needed maintenance shall be provided after each rain.

**STABILIZED CONSTRUCTION ENTRANCE  
DETAIL SC-4**



- CONSTRUCTION SPECIFICATIONS**
- The stone shall be crushed stone. Gravel may be used if crushed stone is not available. The stone shall meet MSA Size No. 2 or ASTM Designation M33 Size No. 2 or 24.
  - The crest of the stone dike shall be at least six inches lower than the lowest elevation of the top of the earth dike and shall be level.
  - The stone outlet structure shall be embedded into the soil a minimum of four inches.
  - The minimum length, in feet, of the crest of the stone outlet structure shall be equal to six times the number of acres of contributing drainage area.
  - The stone outlet structure shall be inspected after each rain, and the stone shall be replaced when the structure ceases to function as intended due to silt accumulation along the slope, washout, construction traffic damage, etc.

**STONE OUTLET STRUCTURE  
DETAIL SC-5**



- CONSTRUCTION SPECIFICATIONS**
- All Earth Dikes shall be composed by earth moving equipment.
  - All Dikes shall have positive drainage to an outlet.
  - Top width may be wider and side slopes may be flatter if desired to facilitate crossing by construction traffic.
  - Field location should be adjusted as needed to utilize a stabilized, safe outlet.
  - Dikes shall have an outlet that functions with a minimum of erosion. Runoff shall be conveyed to a sediment trapping device such as a sediment basin where either the dike channel or the drainage area above the dike are not adequately stabilized.
  - Stabilization shall be: (a) In accordance with standard specifications for seed and straw mulch or straw mulch if not in seeding season. (b) Flow channel as per the chart below. Stone Dike need not be stabilized.

**FLOW CHANNEL STABILIZATION**

TYPE OF STABILIZER	CHANNEL GRADE	TYPE A	TYPE B
1	0.5-3.0%	Seed and Straw Mulch	Seed and Straw Mulch
2	3.1-5.0%	Seed and Straw Mulch	Seed using Jute, or Excelsior; Sed. 2" Stone
3	5.1-8.0%	Seed with Jute, or Sed. 2" Stone	Lined Rip-Rap 4-8"
4	8.1-20%	Lined Rip-Rap 4-8"	Engineering Design

- Stone to be 2 inch stone, or recycled concrete equivalent, in a layer at least 3 inches in thickness and be pressed into the soil with construction equipment.
  - Rip-Rap to be 4-8 inches in a 12" x at least 8 inches thickness and pressed into the soil.
  - Approved equivalents can be substituted for any of the above materials.
- Periodic inspection and required maintenance must be provided after each rain event.

**EARTH / STONE DIKE  
DETAIL SC-6/DETAIL SC-7**

- LEGEND**
- LIMITS OF DISTURBANCE
  - [Symbol] INLET PROTECTION (SC-1 OR SC-2 AS NOTED)
  - [Symbol] SILT FENCE (SC-3)
  - [Symbol] STABILIZED CONSTRUCTION ENTRANCE (SC-4)
  - [Symbol] STONE OUTLET STRUCTURE (SC-5)
  - [Symbol] EARTH/STONE DIKE (SC-6 OR SC-7 AS NOTED)

EROSION AND SEDIMENT CONTROL  
APPROVED  
*Frederick Marc*  
SEDIMENT CONTROL REPRESENTATIVE SH  
10.8.85  
DATE

STAKE/STAGING AREA  
Contractor must submit to the Baltimore City Sediment Control Section designated locations for related stake/and/or Contractor's staging operations prior to any construction operation.

Owner/Developer Certification  
"I/We hereby certify that any clearing, grading, construction and/or development will be done pursuant to this plan and that any responsible personnel involved in the construction project will have a certificate of attendance at a Department of Natural Resources approved training program for the control of sediment and erosion before beginning the project."

*James A. Zito*      *James A. Zito*  
Signature (Owner/Developer)      Print Name      Date  
204 Municipal Bldg      396-A600  
Address      Phone

Engineer's Certificate  
I certify that this plan for Erosion and Sediment Control represents a practical, workable plan based on personal knowledge of the site conditions and that it was prepared in accordance with the requirements of the Baltimore City Erosion and Sediment Control Section.  
*William K. Smith*      *William K. Smith*  
Signature      Date      License Print Name  
50 Scott Aton Rd      CBS-1603  
Cockeysville, Md 21030      Phone

CITY OF BALTIMORE  
DEPARTMENT OF PUBLIC WORKS  
BUREAU OF HIGHWAYS  
**EROSION & SEDIMENT CONTROL DETAILS**  
**HOWARD PARK  
COMMERCIAL DISTRICT**  
SCALE NO SCALE      DATE  
HIGHWAY ENGINEERING DIVISION      SHEET 14 OF 14

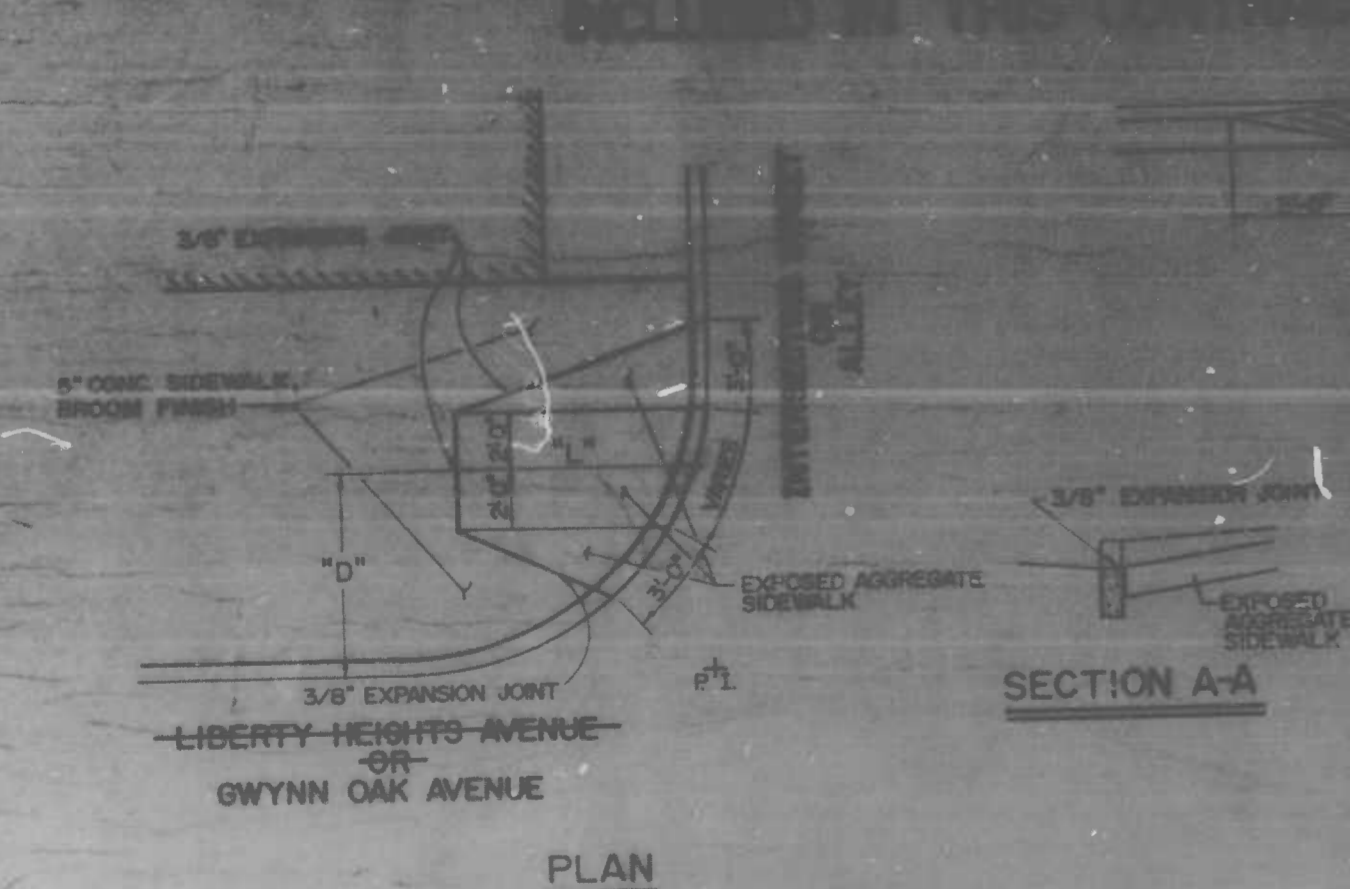
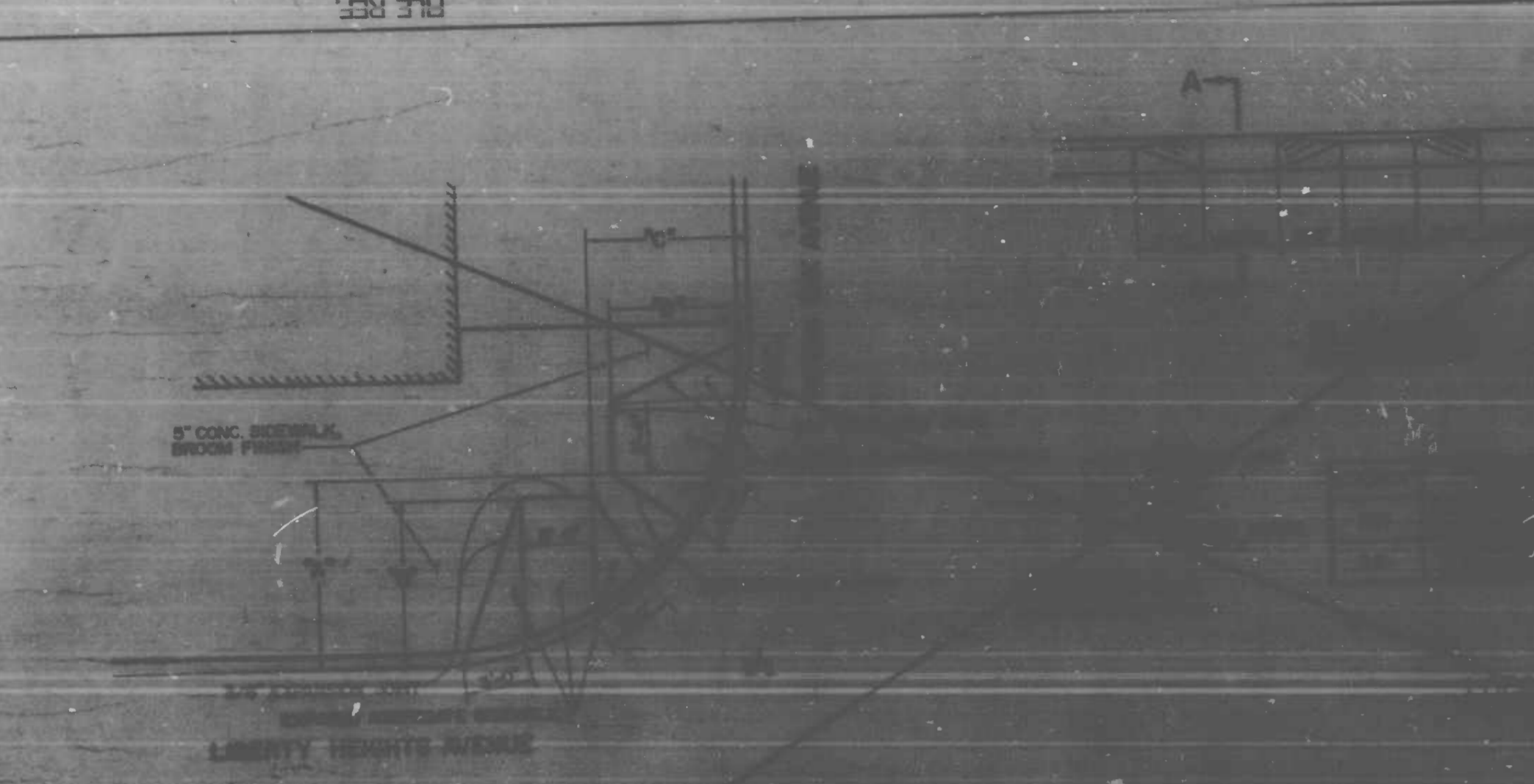
DRAWN BY: A. MOSCATO  
EXAMINED BY:

FILE REF.

REVISIONS		
NO.	DESCRIPTION	DATE

**INCLUDED IN THIS CONTRACT**

**NOTES**  
 1. ALL DIMENSIONS ARE TO FACE UNLESS OTHERWISE NOTED.  
 2. ALL DIMENSIONS ARE TO FACE UNLESS OTHERWISE NOTED.  
 3. ALL DIMENSIONS ARE TO FACE UNLESS OTHERWISE NOTED.

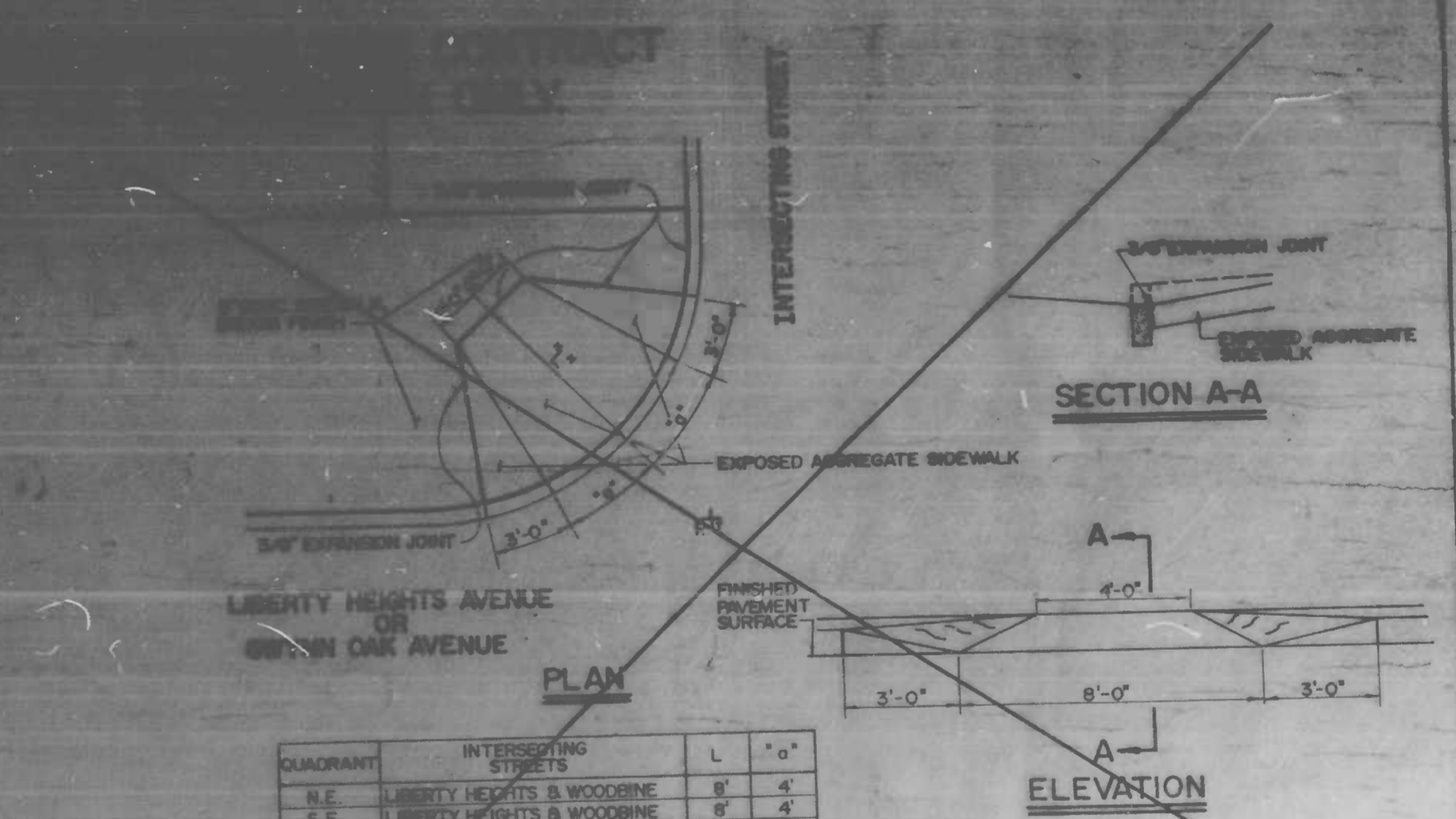


**PEDESTRIAN RAMP DETAILS**

(TO BE USED AT LOCATIONS LISTED IN TABLE)

QUADRANT	INTERSECTING STREET	L	"o"
N.E.	LIBERTY HEIGHTS & WOODBINE	8' 4"	8' 4"
S.E.	LIBERTY HEIGHTS & WOODBINE	8' 4"	8' 4"
N.W.	LIBERTY HEIGHTS & GWYNN OAK	7' 3"	7' 3"
N.E.	LIBERTY HEIGHTS & GWYNN OAK	7' 3"	7' 3"
N.W.	LIBERTY HEIGHTS & HILLSDALE	6' 4"	6' 4"
S.W.	LIBERTY HEIGHTS & HILLSDALE	6' 4"	6' 4"
N.W.	GWYNN OAK & WOODBINE	8' 4"	8' 4"
N.E.	GWYNN OAK & WOODBINE	7' 3"	7' 3"

**LOCATIONS**



**PEDESTRIAN RAMP DETAILS**

(TO BE USED AT LOCATIONS LISTED IN TABLE)

CITY OF BALTIMORE  
 DEPARTMENT OF PUBLIC WORKS  
 BUREAU OF HIGHWAYS  
 MISCELLANEOUS DETAILS  
 HOWARD PARK  
 COMMERCIAL DISTRICT  
 PEDESTRIAN RAMP DETAILS

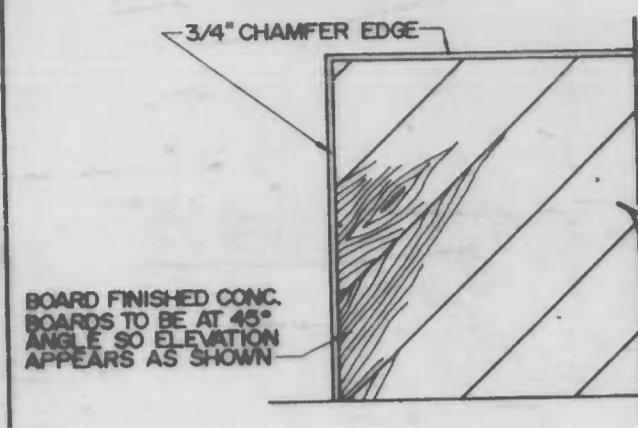
SCALE: NOT TO SCALE  
 DATE: 12-17-84  
 BALTIMORE CITY CONTRACT NO. 3032  
 SHEET 3 OF 14

FILE REF.

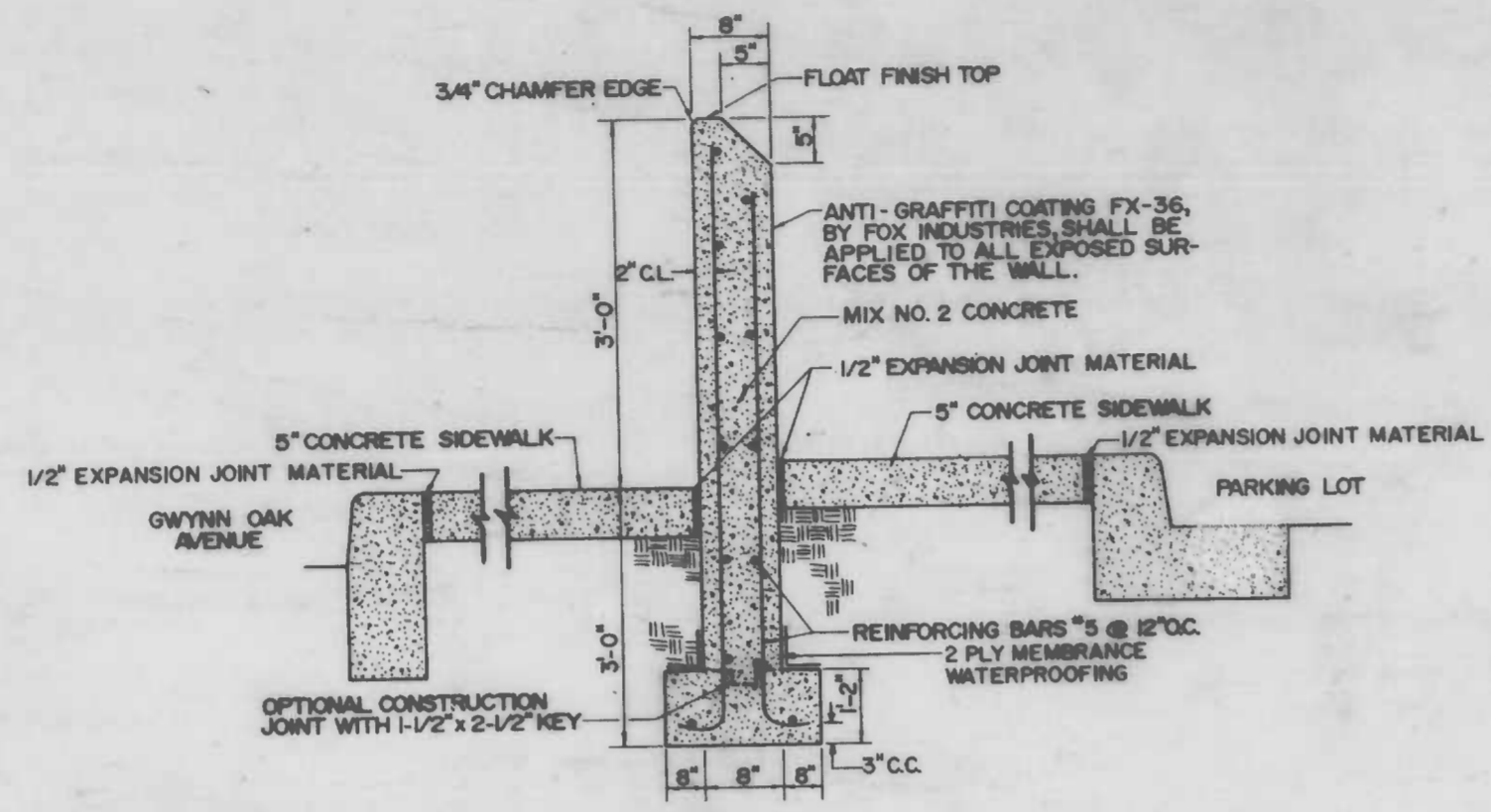
FILE REF.

REVISIONS			
NO.	DESCRIPTION	DATE	BY
1	EROSION & SEDIMENT CONTROL REVISIONS	5/30/88	E.J.M.

# EROSION AND SEDIMENT CONTROL NOTES



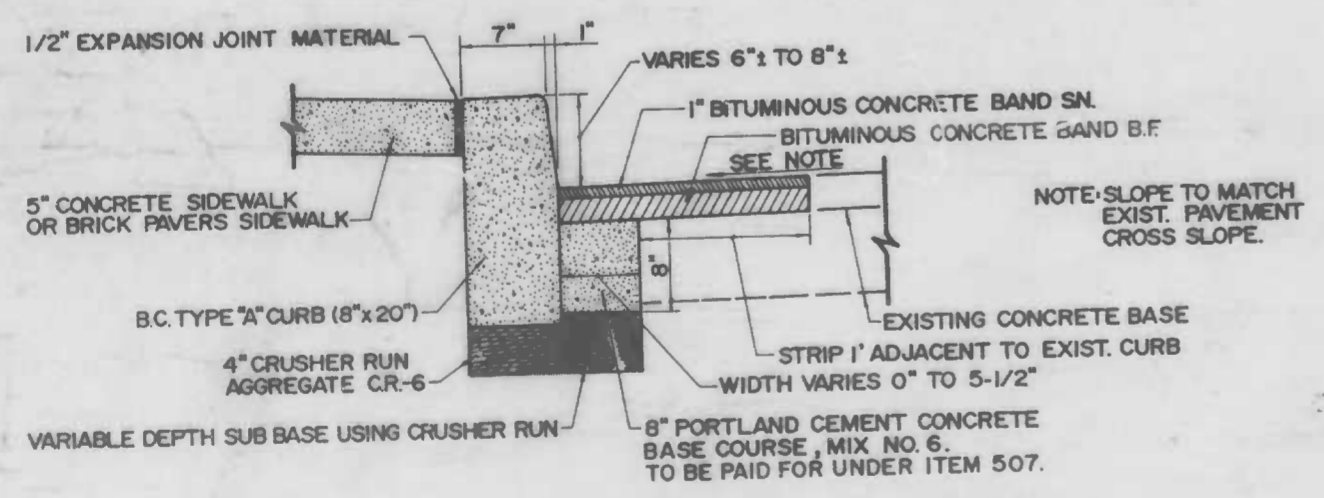
**ELEVATION**



**SECTION**

## PARKING LOT WALL DETAILS

SCALE: 1" = 10"  
STA 0+30.27 RT TO STA 1+12.77 RT



**DETAIL "C"**  
CURB CONSTRUCTION - GWYNN OAK AVE.

### GENERAL NOTES

- THE CONTRACTOR WILL COMPLY WITH ALL REQUIREMENTS OF SEDIMENT AND EROSION CONTROL AS SET FORTH IN THE BALTIMORE CITY SEDIMENT CONTROL MANUAL.
- ALL SEDIMENT CONTROLS AND CRITICAL SLOPES MUST BE STABILIZED WITHIN SEVEN CALENDAR DAYS. ALL OTHER DISTURBED AREAS ON THE PROJECT SITE MUST BE STABILIZED WITHIN FOURTEEN CALENDAR DAYS.
- ALL UTILITIES TO BE CONSTRUCTED FIRST, PRIOR TO ANY CONSTRUCTION ON THE SITE.
- NO PUMPING FROM FOUNDATION EXCAVATIONS WILL BE ALLOWED DIRECTLY INTO CITY SYSTEM UNLESS IT IS FILTERED BY WAY OF SEDIMENT TRAPS OR FILTER.
- ALL EXCAVATED MATERIAL SHALL BE PLACED ON THE HIGH SIDE WHENEVER POSSIBLE AND CONFINED TO AN AREA WHERE IT WILL NOT OBSTRUCT THE NORMAL FLOW OF DRAINAGE COURSES.
- CONTINUOUS INSPECTION AND MAINTENANCE OF ALL SEDIMENT CONTROL DEVICES WILL BE REQUIRED.
- THE CONTRACTOR SHALL NOTIFY IN WRITING THE BALTIMORE CITY SEDIMENT CONTROL REPRESENTATIVE AT LEAST THREE WORKING DAYS PRIOR TO STARTING ANY WORK.
- BALTIMORE CITY SEDIMENT CONTROLS SECTION MUST BE NOTIFIED IN WRITING OF WHERE ANY EXCESS MATERIAL WILL BE DISPOSED OR WHERE ANY BORROWED MATERIAL WILL COME FROM.

### SPECIFICATIONS FOR VEGETATIVE STABILIZATION - TEMPORARY SEEDING

- SITE PREPARATION**  
PRIOR TO SEEDING, INSTALL NEEDED EROSION AND SEDIMENT CONTROL PRACTICES. TEMPORARY SEEDING SHALL BE USED IN AREAS OF PROPOSED SIDEWALKS.
- SOIL AMENDMENTS**  
FERTILIZER SHALL BE APPLIED AT THE RATE OF 15 LBS./1000 SQ. FT. USING 10-10-10 OR EQUIVALENT.
- SEED BED PREPARATION**  
THE TOP LAYER OF SOIL SHALL BE LOOSENED BY DISCING, RAKING OR OTHER ACCEPTABLE MEANS BEFORE SEEDING.
- SEEDING**  
THE TYPE OF SEEDING SHALL BE PERENNIAL RYEGRASS. SEED SHALL BE APPLIED UNIFORMLY WITH A CYCLONE SEEDER, DRILL, CULTIPACKER SEEDER, OR HYDROSEEDER (SLURRY INCLUDES SEED AND FERTILIZER).
- MULCHING**
  - MATERIALS AND AMOUNTS**  
WOODCHIPS SHALL BE USED AT THE RATE OF APPROXIMATELY 275 LBS. PER 1000 SQ. FT.
  - MULCH ANCHORING**  
PEG AND TWINE SHALL BE USED AS MULCH ANCHORING IN THE FOLLOWING MANNER: DRIVE 8-TO 10-INCH WOODEN PEGS TO WITHIN 2 TO 3 INCHES OF THE SOIL SURFACE EVERY 4 FEET IN ALL DIRECTIONS. STAKES MAY BE DRIVEN BEFORE OR AFTER APPLYING MULCH. SECURE MULCH TO SOIL SURFACE BY STRETCHING TWINE BETWEEN PEGS IN A CRISS-CROSS WITHIN A SQUARE PATTERN. SECURE TWINE AROUND EACH PEG WITH TWO OR MORE ROUND TURNS.

### SEQUENCE OF OPERATIONS

- CONTRACTOR MUST SUBMIT WRITTEN NOTIFICATION 72 HOURS PRIOR TO ANY CONSTRUCTION ACTIVITY TO THE BALTIMORE CITY SEDIMENT CONTROL SECTION STATING:
  - WHEN CONTRACTOR INTENDS TO BEGIN CONSTRUCTION
  - SOURCE OF BORROW MATERIAL
  - DISPOSAL SITE AREA
  - CONTRACTORS TENTATIVE CLOSING DATE
  - STOCKPILE AREA LOCATION
  - CONTRACTORS STAGING AREA LOCATION
- INSTALL INLET PROTECTION TYPE SC-1 TO THE EXISTING INLETS ON THE SOUTHEAST CORNER OF INTERSECTION GWYNN OAK AVENUE AND MAINE AVENUE.
- PROJECT SITE, EXCAVATE AREAS FOR PERMANENT STRUCTURES SUCH AS: PARKING LOT, WALL, CURB, GUTTER AND PARKING FACILITY.
- INSTALL PROPOSED UTILITIES AND PROVIDE INLET PROTECTION TYPE SC-1 & SC-2.
- INSTALL STABILIZED CONSTRUCTION ENTRANCE SC-4, AND SILT FENCE SC-3.
- PROVIDE TEMPORARY STABILIZATION TO DISTURBED AREAS WHICH REMAIN INACTIVE FOURTEEN DAYS AFTER EXCAVATION.
- REMOVE STABILIZED CONSTRUCTION ENTRANCE, PARKING LOT INLET PROTECTION TYPE SC-2, FINE GRADE AND PLACE PARKING LOT SUBBASE.
- CONSTRUCT CURB, GUTTER, PARKING LOT WALL AND PARKING BITUMINOUS BASE COURSE.
- REMOVE SILT FENCE, INLET PROTECTION, AND CONSTRUCT SIDEWALK, PARKING LOT ENTRANCES, AND PARKING LOT SURFACE COURSE.
- FINE GRADE ALL REMAINING DISTURBED AREAS AND PROVIDE PERMANENT STABILIZATION AS SPECIFIED BY THE APPROVED SEDIMENT CONTROL PLAN FOR PROJECT SITE.

### STABILIZATION SCHEDULE

ACTIVE / INACTIVE	AREA	S.F.	TYPE STABILIZATION	SEQUENCE
ACTIVE	A	4630	TEMP. CRUSHER RUN PERM. BIT. CONCRETE	7
ACTIVE	B	3300	TEMP. ANNUAL RYEGRASS PERM. CEM. CONCRETE	9
ACTIVE	C	1695	TEMP. CRUSHER RUN PERM. CEM. CONCRETE	5
ACTIVE	D	325	TEMP. CRUSHER RUN PERM. CEM. CONCRETE	6
ACTIVE	E	660	TEMP. CRUSHER RUN PERM. CEM. CONCRETE	9
ACTIVE / INACTIVE	F	700	TEMP. ANNUAL RYEGRASS PERM. BIT. CONCRETE	6 / 10

\* SEE SHEET 13 FOR AREA DESIGNATIONS

### SITE DATA

TOTAL DISTURBED AREA	= 11,300 S.F.
TOTAL CUT	= 180 C.Y.
TOTAL FILL	= 20 C.Y.
TOTAL CUT / FILL BALANCE RATIO	= 160 C.Y.

CITY OF BALTIMORE  
DEPARTMENT OF PUBLIC WORKS  
BUREAU OF HIGHWAYS  
MISCELLANEOUS DETAILS

**HOWARD PARK  
COMMERCIAL DISTRICT**

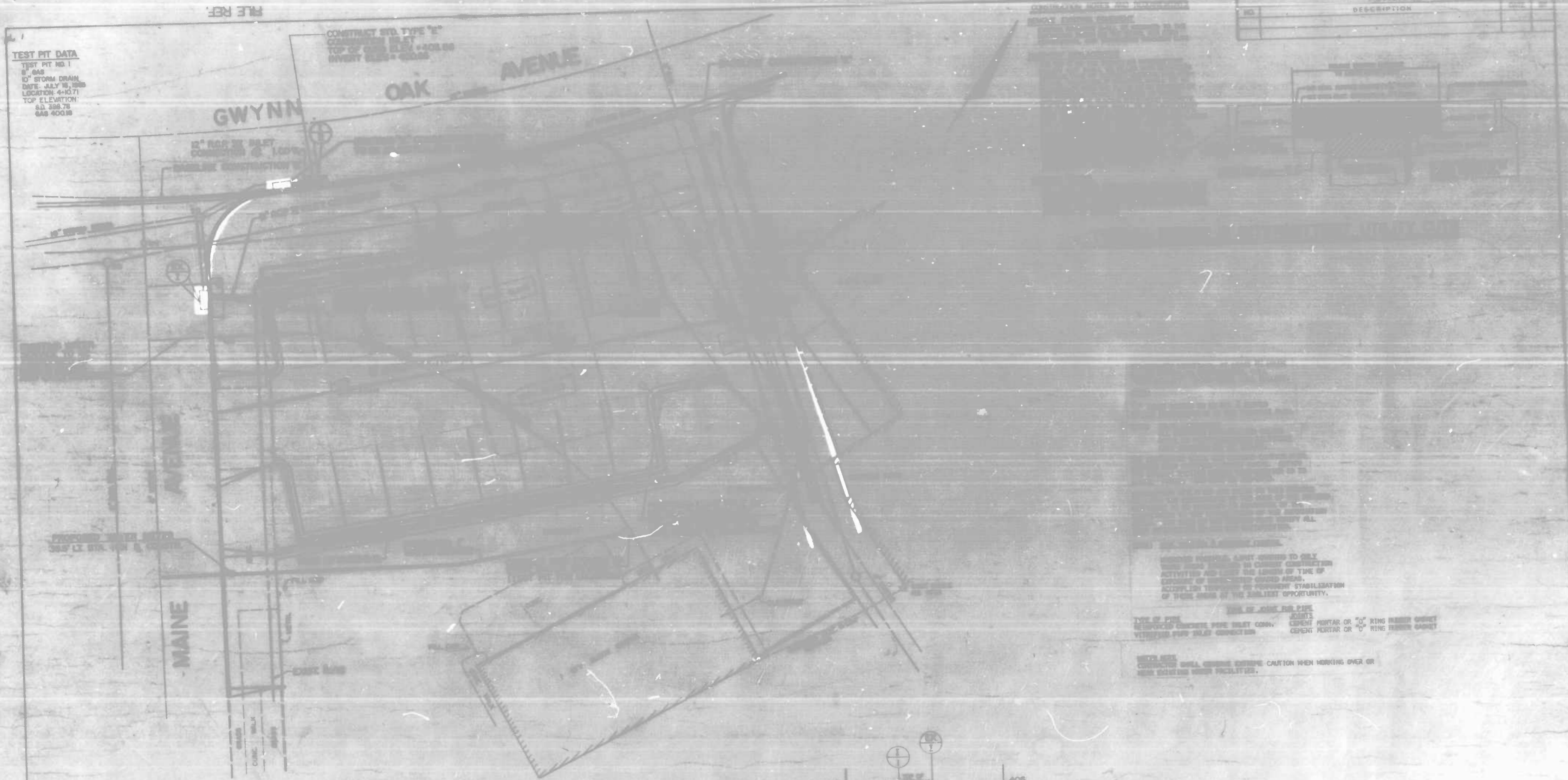
SCALE: AS SHOWN DATE: 12-17-84  
BALTIMORE CITY CONTRACT NO. 3032 SHEET 4 OF 14

FILE REF.

**TEST PIT DATA**  
 TEST PIT NO. 1  
 12" RCP III  
 DATE: JULY 18, 1983  
 LOCATION: 4+10.71  
 TOP ELEVATION:  
 83.38875  
 849 400.88

CONTRACT STD. TYPE "E"  
 CONCRETE INLET  
 TOP OF CURB ELEV. 402.88  
 INVERT ELEV. 400.88

REVISIONS	
NO.	DESCRIPTION



**NOTES**

1. ALL WORK SHALL BE IN ACCORDANCE WITH THE STANDARD SPECIFICATIONS FOR PUBLIC WORKS, CITY OF BALTIMORE, LATEST EDITION.

2. THE CONTRACTOR SHALL BE RESPONSIBLE FOR OBTAINING ALL NECESSARY PERMITS AND FOR THE PROTECTION OF ALL EXISTING UTILITIES.

3. THE CONTRACTOR SHALL MAINTAIN ACCESS TO ALL ADJACENT PROPERTIES AT ALL TIMES.

4. THE CONTRACTOR SHALL BE RESPONSIBLE FOR THE PROTECTION OF ALL EXISTING UTILITIES AND SHALL BE REQUIRED TO REPAIR OR REPLACE ANY UTILITIES DAMAGED BY HIS WORK.

5. THE CONTRACTOR SHALL MAINTAIN ALL EXISTING CURBS AND SIDEWALKS IN GOOD REPAIR.

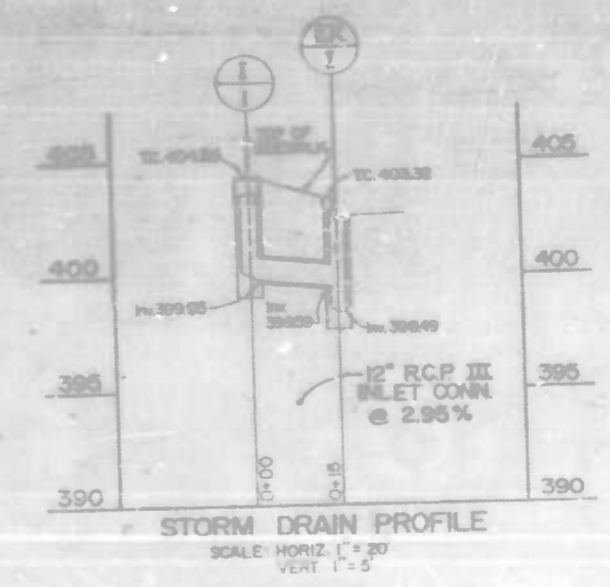
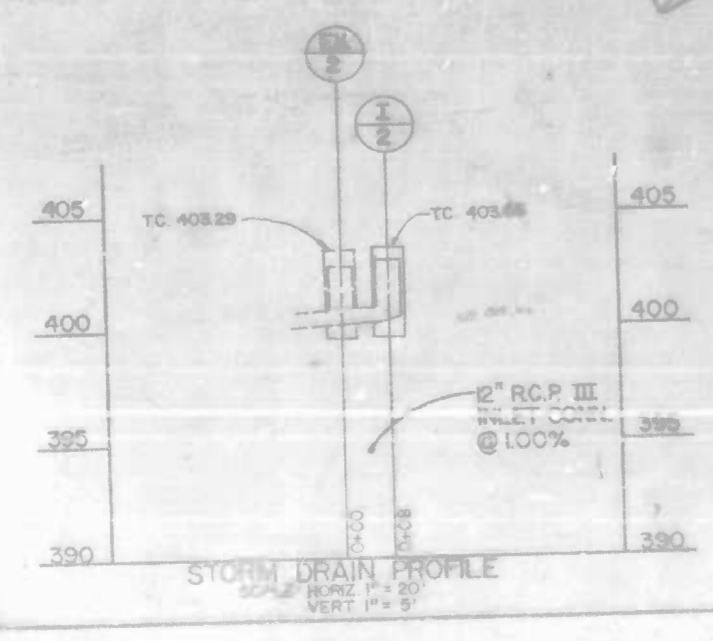
6. THE CONTRACTOR SHALL BE RESPONSIBLE FOR THE PROTECTION OF ALL EXISTING TREES AND SHALL BE REQUIRED TO REPAIR OR REPLACE ANY TREES DAMAGED BY HIS WORK.

7. THE CONTRACTOR SHALL MAINTAIN ALL EXISTING SIGNAGE AND SHALL BE REQUIRED TO REPAIR OR REPLACE ANY SIGNAGE DAMAGED BY HIS WORK.

8. THE CONTRACTOR SHALL BE RESPONSIBLE FOR THE PROTECTION OF ALL EXISTING FACILITIES AND SHALL BE REQUIRED TO REPAIR OR REPLACE ANY FACILITIES DAMAGED BY HIS WORK.

9. THE CONTRACTOR SHALL MAINTAIN ALL EXISTING UTILITIES AND SHALL BE REQUIRED TO REPAIR OR REPLACE ANY UTILITIES DAMAGED BY HIS WORK.

10. THE CONTRACTOR SHALL BE RESPONSIBLE FOR THE PROTECTION OF ALL EXISTING UTILITIES AND SHALL BE REQUIRED TO REPAIR OR REPLACE ANY UTILITIES DAMAGED BY HIS WORK.



CITY OF BALTIMORE  
 DEPARTMENT OF PUBLIC WORKS  
 BUREAU OF HIGHWAYS

**UTILITY PLAN**

**HOWARD PARK  
 COMMERCIAL DISTRICT**

PARKING LOT  
 MAINE AVE. & GWYNN OAK AVE.

SCALE: 1" = 10'      DATE: 12-17-84  
 BALTIMORE CITY CONTRACT NO. 3032      SHEET 9 OF 14

FILE REF.