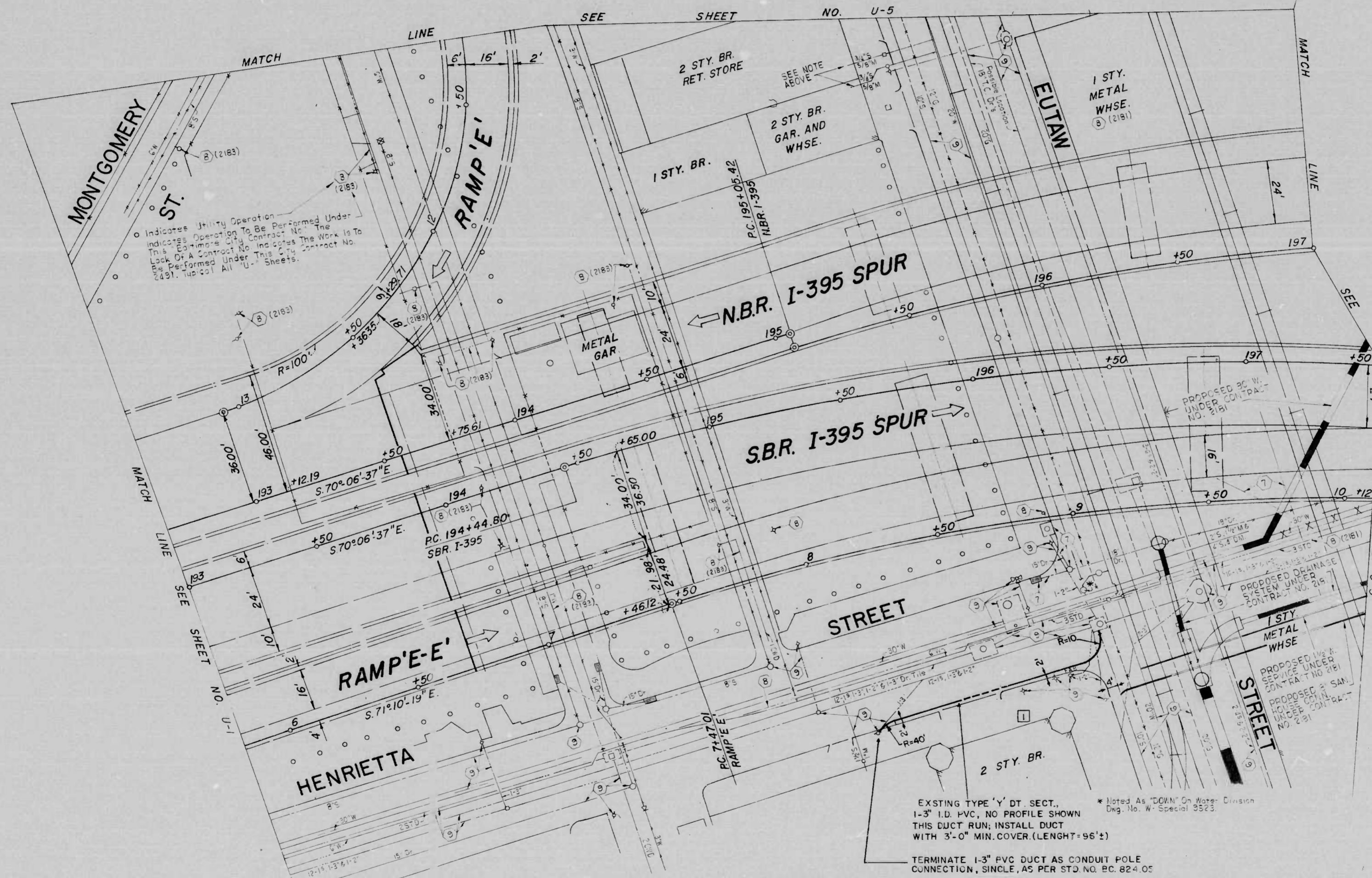


LEGEND

- ② ABANDON EXISTING MANHOLE (STORM, SANITARY AND ELECTRICAL)
- ③ ADJUST EXISTING UTILITY SURFACE FEATURE VERTICALLY TO PROJECT FINISHED GRADE
- ④ PORTION OF BOULEVARD DRAINAGE SYSTEM. SEE ROADWAY DRAWINGS
- ⑤ UTILITY OR APPURTENANCE TO BE REMOVED AND/OR RELOCATED BY OTHERS
- ⑥ UTILITY OR APPURTENANCE TO REMAIN IN SERVICE
- ⑦ TO BE ABANDONED BY CONTRACTOR UNDER CONTRACT NO. 2491
- ⑧ EXISTING SYSTEM PRESENTLY ABANDONED
- ⑨ TO BE ABANDONED BY OTHERS
- OR OVERHEAD UTILITY SYSTEMS

NOTE:
Abandonment Of Two (2) Water Services At Corporation Cask in 20' W. And Removal Of Water Meters, To Be Performed By The Baltimore City Utility Maintenance Division.

FEMA REGION	STATE	FED. AID PROJ. NO.	SHEET NO.	TOTAL SHEETS
3	MD.	1-395-8(5)	U-2	U-6 (244)



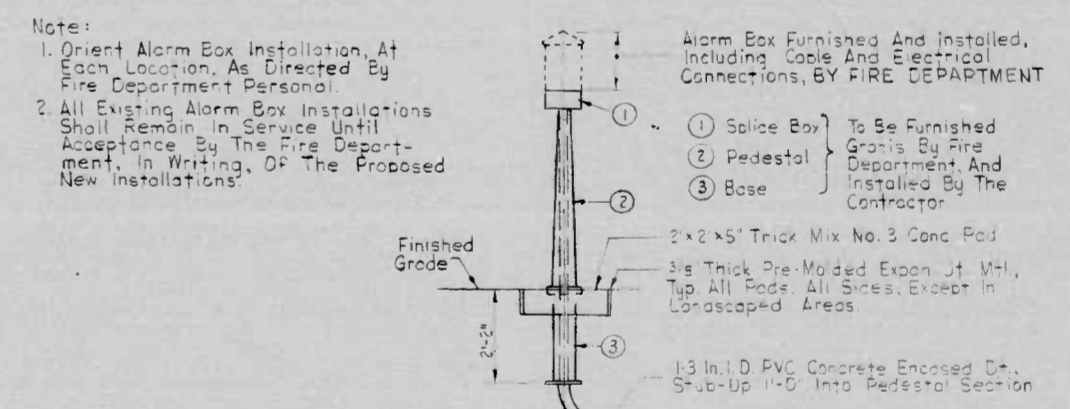
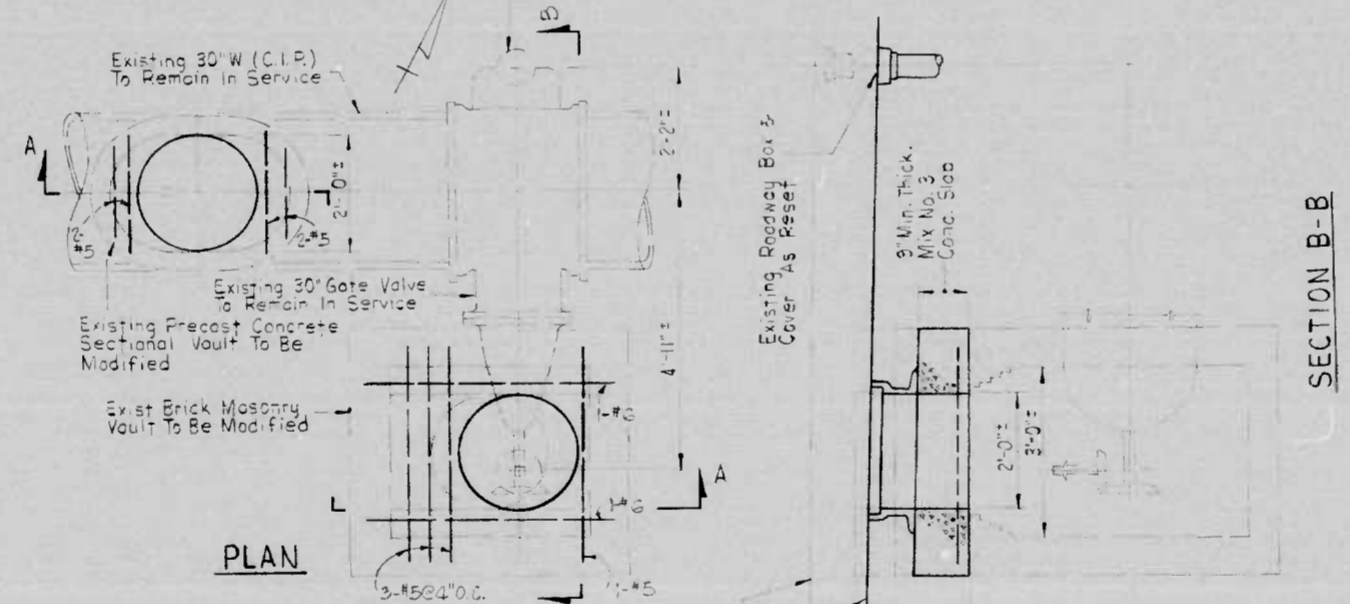
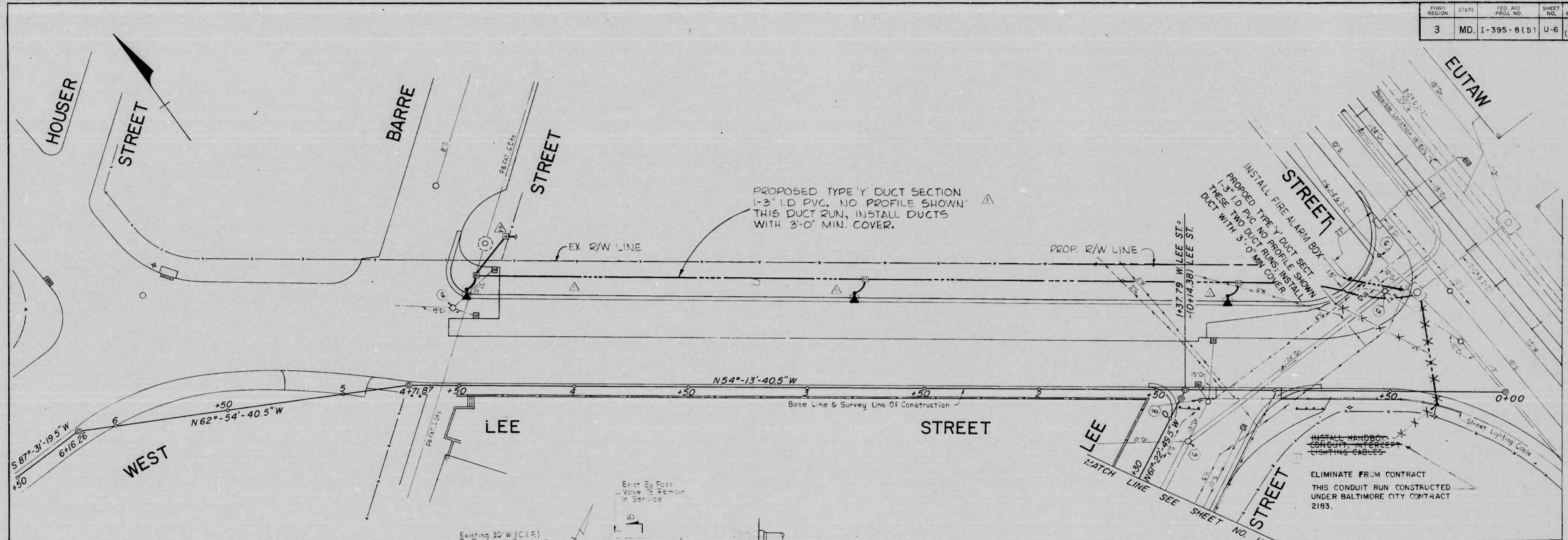
EXISTING TYPE 'Y' DT. SECT. 1-3" I.D. PVC, NO PROFILE SHOWN THIS DUCT RUN; INSTALL DUCT WITH 3'-0" MIN. COVER (LENGTH=96'-2)

TERMINATE 1-3" PVC DUCT AS CONDUIT POLE CONNECTION, SINGLE, AS PER STD NO. BC. 824-05

REVISIONS	CONSULTANT	CITY OF BALTIMORE DEPARTMENT OF PUBLIC WORKS	STATE HIGHWAY ADMINISTRATION OF MARYLAND INTERSTATE DIVISION FOR BALTIMORE CITY
1 THIS CONDUIT RUN CONSTR UNDER PALTO CITY NO 2183 FOR INFORMATIONAL PURPOSES ONLY 8/16/73	RUMMEL, KLEPPER & KAHL CONSULTING ENGINEERS BALTIMORE, MARYLAND	600 E OF RUSSELL ST TO S OF HAMBURG ST & HENRIETTA ST UTILITY RELOCATIONS SCALE: 1"=20' DATE: March 1972	DRAWN BY: FWS TRACE BY: FWS FEMA NO: 1-395-8-(5) SHA NO: BC 255-4-815 BALTO. CITY NO. 249

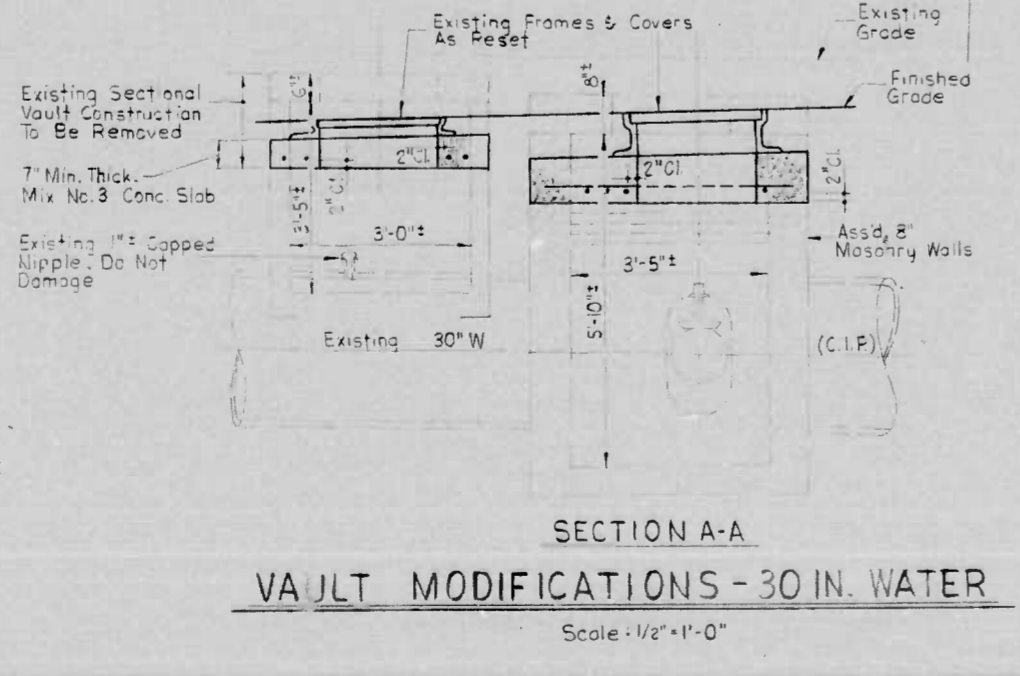
SHEET NO. U-2 OF U-6

FWS REGION	STATE	FED AID PROJ. NO.	SHEET NO.	TOTAL SHEETS
3	MD.	I-395-B(5)	U-6	U-6 (244)



ALARM BOX INSTALLATION	
TO BE REMOVED FROM SERVICE	BOX NO. TO BE INSTALLED BY CONTRACTOR
Northwest Corner Of Eutaw & W. Lee Sts	NORTHWEST CORNER OF EUTAW & W. LEE STS.

- LEGEND**
- ② ABANDON EXISTING MANHOLE (STORM, SANITARY AND ELECTRICAL)
 - ③ ADJUST EXISTING UTILITY SURFACE FEATURE VERTICALLY TO PROJECT FINISHED GRADE
 - ④ PORTION OF BOULEVARD DRAINAGE SYSTEM. SEE ROADWAY DRAWINGS
 - ⑤ UTILITY OR APPURTENANCE TO BE REMOVED AND/OR RELOCATED BY OTHERS
 - ⑥ UTILITY OR APPURTENANCE TO REMAIN IN SERVICE
 - ⑦ TO BE ABANDONED BY CONTRACTOR UNDER CONTRACT NO. 2441
 - ⑧ EXISTING SYSTEM PRESENTLY ABANDONED
 - ⑨ TO BE ABANDONED BY OTHERS
 - DN. OPERATIONAL UTILITY SYSTEMS



REVISIONS	CONSULTANT	CITY OF BALTIMORE	STATE HIGHWAY ADMINISTRATION OF MARYLAND
△ Addendum No.1 4/18/79	RUMMEL, KLEPPER & RAHL	DEPARTMENT OF PUBLIC WORKS	& INTERSTATE DIVISION FOR BALTIMORE CITY
△ Addendum No.5 5/9/79		1-395 SPUR	
□ DELETED CONDUIT CROSSING 8/16/79	CONSULTING ENGINEERS	600' E OF RUSSELL ST TO S OF HAMBURG ST. & TO HE'RIETTA ST	
	BALTIMORE, MARYLAND	UTILITY RELOCATIONS	
		SCALE: 1" = 20'	DATE: March 1979
			DRAWN BY: FWS
			DES. BY: FWS
			TRACED BY: FWS
			CHK BY: WFK
			F.A.P. NO. I-395-B-(5)
			S.H.A. NO. BC 255.4-815
			BALTO. CITY NO. 2491
			SHEET NO. U-6 of U-6