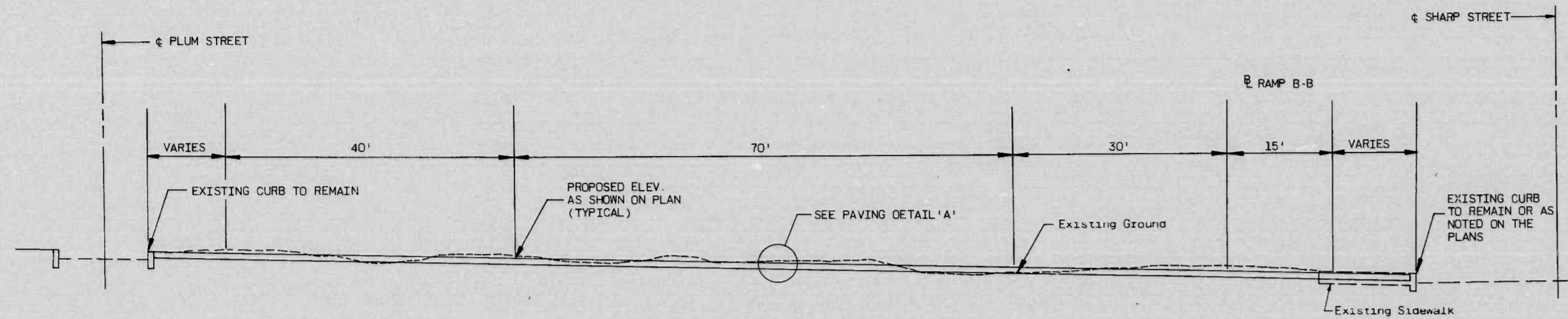
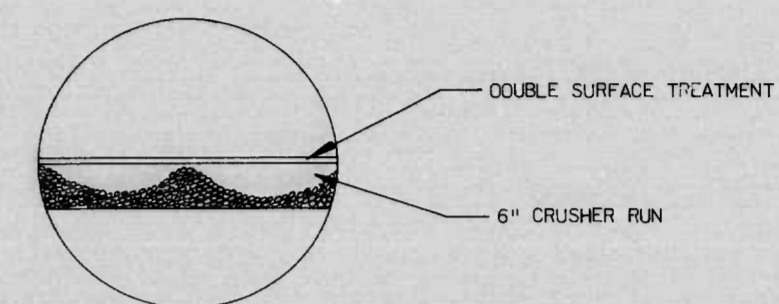


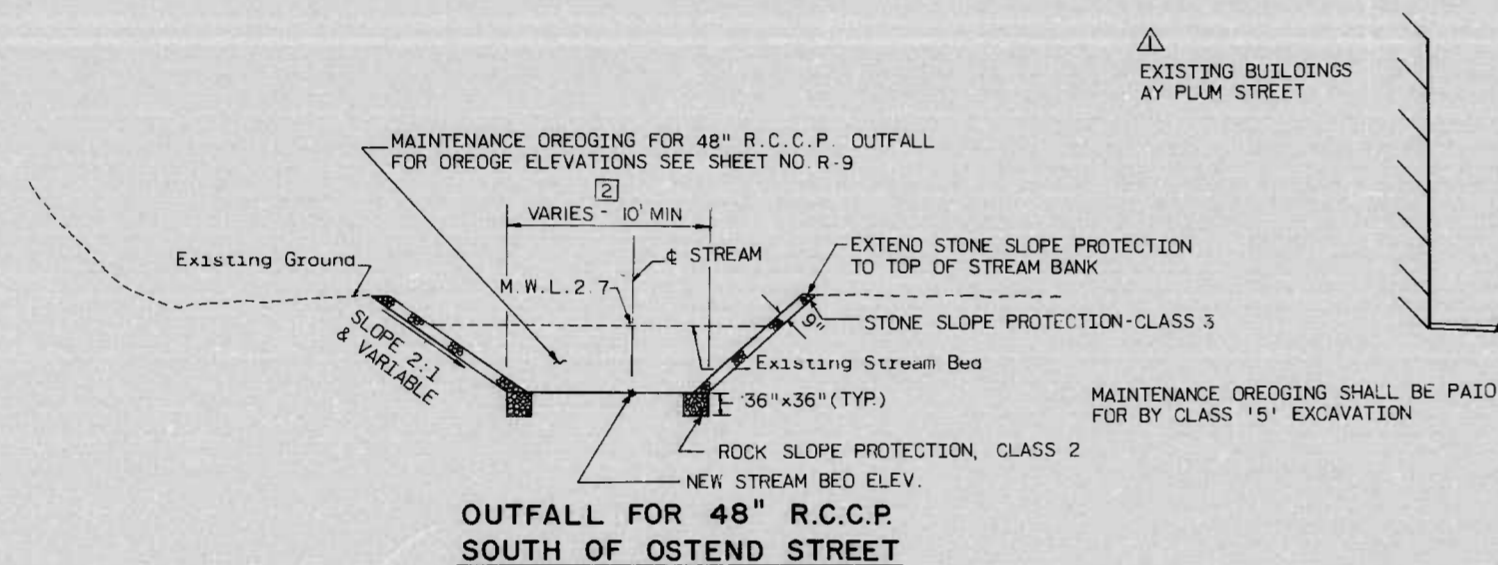
FHWA REGION	STATE	FED. AID PROJ. NO.	SHEET NO.	TOTAL SHEETS
3	MD.	I-395-8(7)0	G-6	92



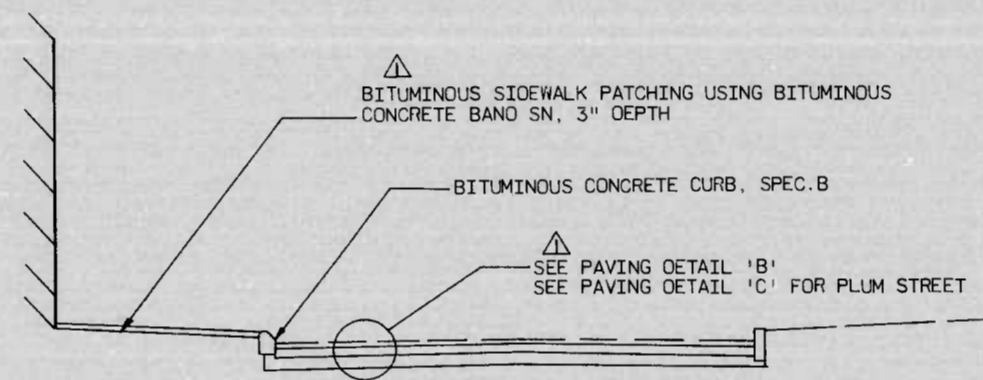
**TYPICAL SECTION OF PAVING UNDER VIADUCT STRUCTURE**  
 STA. 59+10 TO STA. 68+50 ±  
 SCALE: 1" = 10'



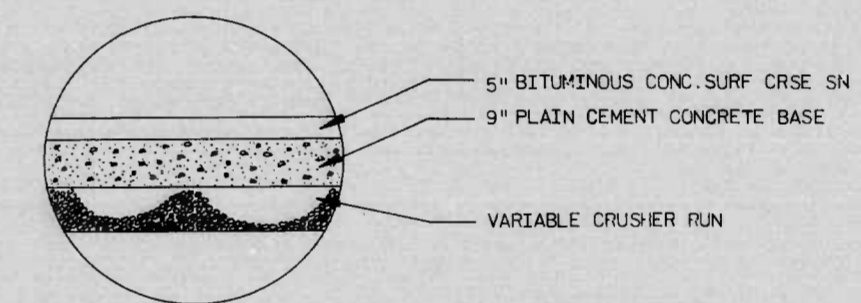
**PAVING DETAIL 'A'**  
 NOT TO SCALE



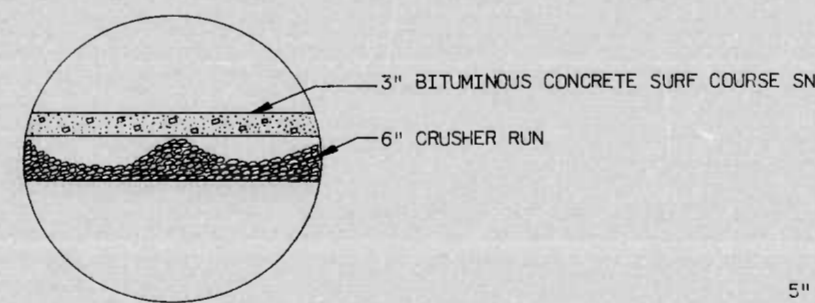
**OUTFALL FOR 48" R.C.C.P. SOUTH OF OSTEND STREET**  
 NOT TO SCALE



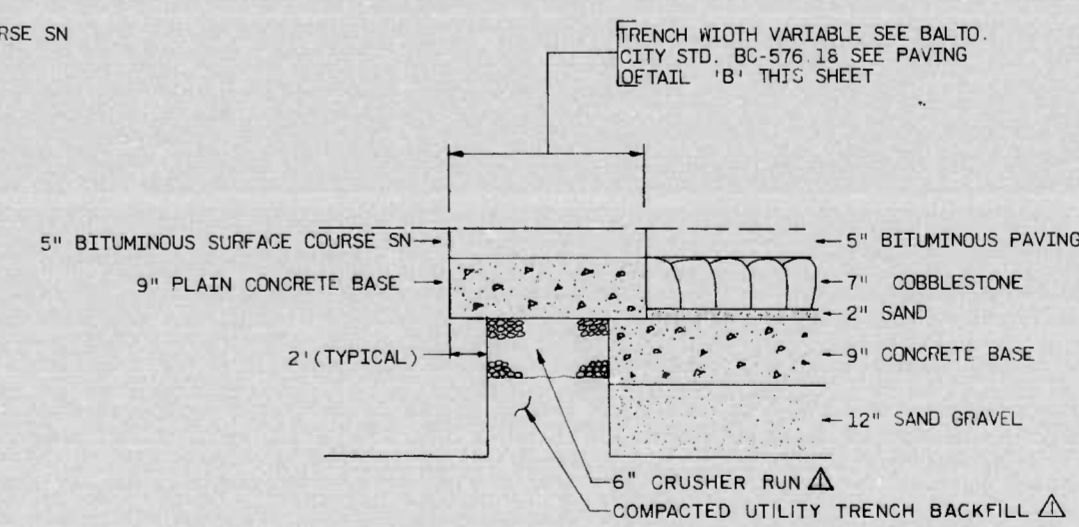
**TYPICAL SECTION OF EXISTING CITY STREETS (PAVEMENT & CURB REPLACEMENT)**  
 NOT TO SCALE



**PAVING DETAIL 'B' FOR PAVEMENT REPLACEMENT**  
 NOT TO SCALE



**PAVING DETAIL 'C'**  
 NOT TO SCALE



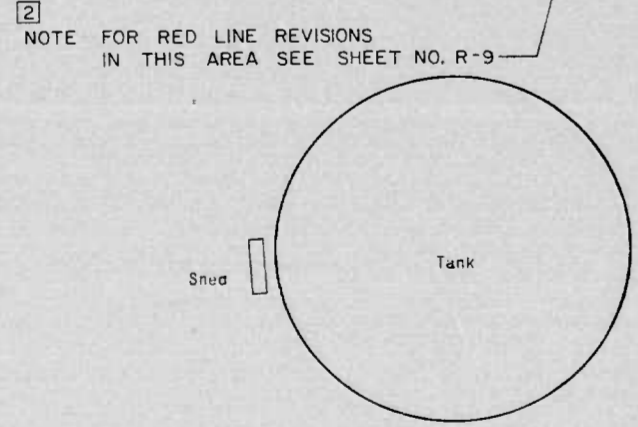
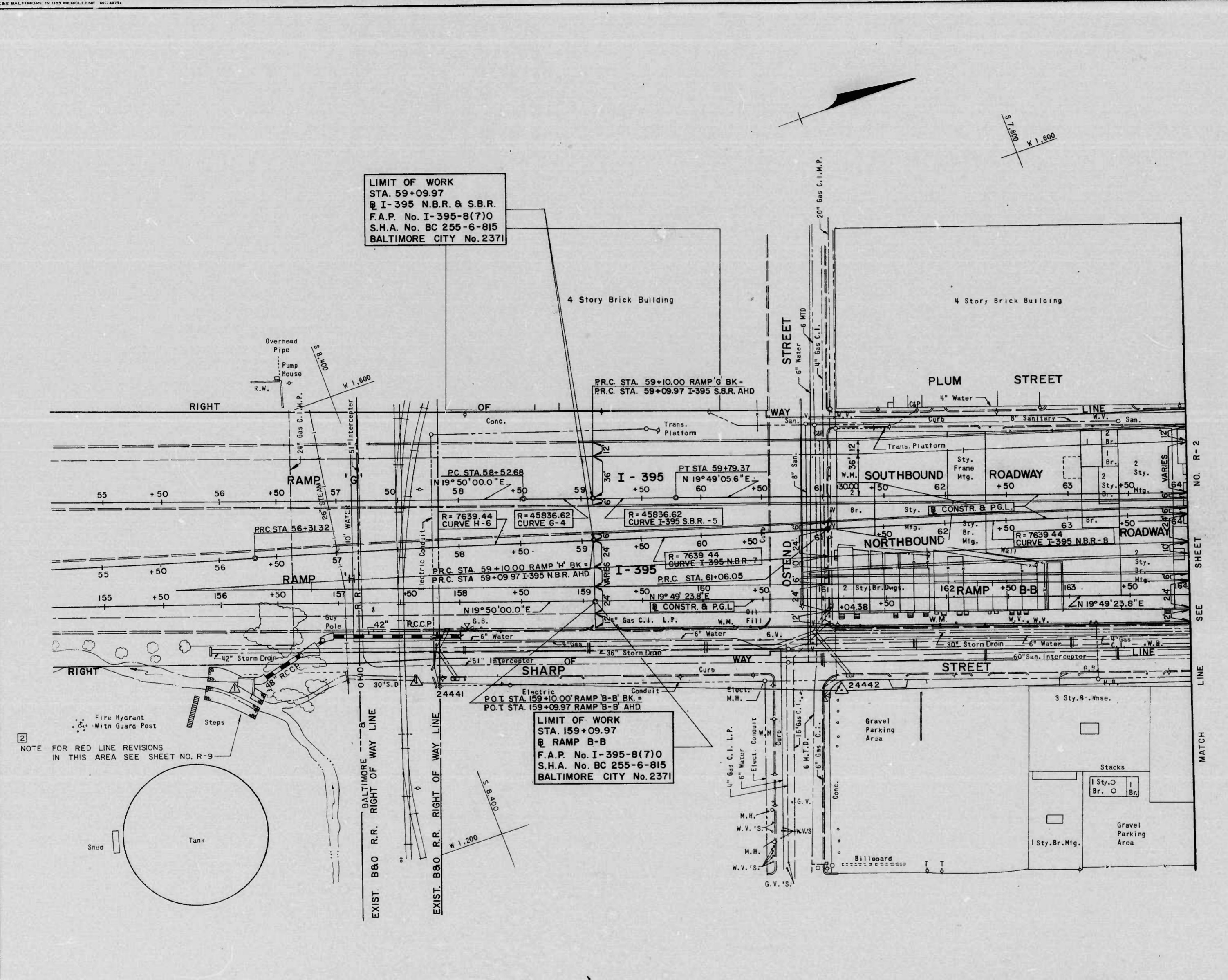
**PAVEMENT REPLACEMENT DETAIL**  
 NOT TO SCALE

2 RED LINE REVISION NO. 2  
 BY EBA-S&T  
 1-21-81

<b>REVISIONS</b> Δ ADDENDUM NO. 2 BY EBA/S&T 11-29-78	<b>CONSULTANT</b> EBA-S&T <i>Consulting Engineers</i> BALTIMORE, MARYLAND	CITY OF BALTIMORE DEPARTMENT OF PUBLIC WORKS & INTERSTATE ROUTE 395 OSTEND STREET TO SOUTH OF HAMBURG STREET <b>ROADWAY DETAILS</b>	STATE HIGHWAY ADMINISTRATION OF MARYLAND INTERSTATE DIVISION FOR BALTIMORE CITY DRAWN BY: F. FLETEZ/A. CLARK TRACED BY: F. FLETEZ F.A.P. NO. I-395-8(7)0 S.H.A. NO. 8C 255-6-815 BALTO. CITY NO. 2371	DES. BY: D. HUBER CHK. BY: D. HUBER SHEET NO. 92 G-6 OF G-6
SCALE: AS SHOWN		DATE: SEPT. 1978		

K&C BALTIMORE 181133 HERCULENE MC 4974

FHWA REGION	STATE	FED. AID PROJ. NO.	SHEET NO.	TOTAL SHEETS
3	MD.	I-395-8(7)O	R-1	92
				R-20



REVISIONS	CONSULTANT	CITY OF BALTIMORE DEPARTMENT OF PUBLIC WORKS & STATE HIGHWAY ADMINISTRATION OF MARYLAND INTERSTATE DIVISION FOR BALTIMORE CITY	
ADDENDUM NO. 2 BY EBA-S&T 11-29-78	EBA-S&T Consulting Engineers BALTIMORE, MARYLAND	INTERSTATE ROUTE 395 OSTEND STREET TO SOUTH OF HAMBURG STREET PLAN I-395 & RAMP B-B	DRAWN BY J. BAKER TRACED BY A. CLARK F.A.P. NO. I-395-8(7)O S.H.A. NO. BC 255-6-815 BALTO. CITY NO. 2371
RED LINE REVISION NO. 2 BY EBA-S&T 1-21-81		SCALE: 1" = 40'	DES. BY G. DELA CRUZ CHK. BY D. HUBER SHEET NO. 92 R-1 of R-20
		DATE: SEPT. 1978	

K&E BALTIMORE 18 1133 MERCULENE MC 4892

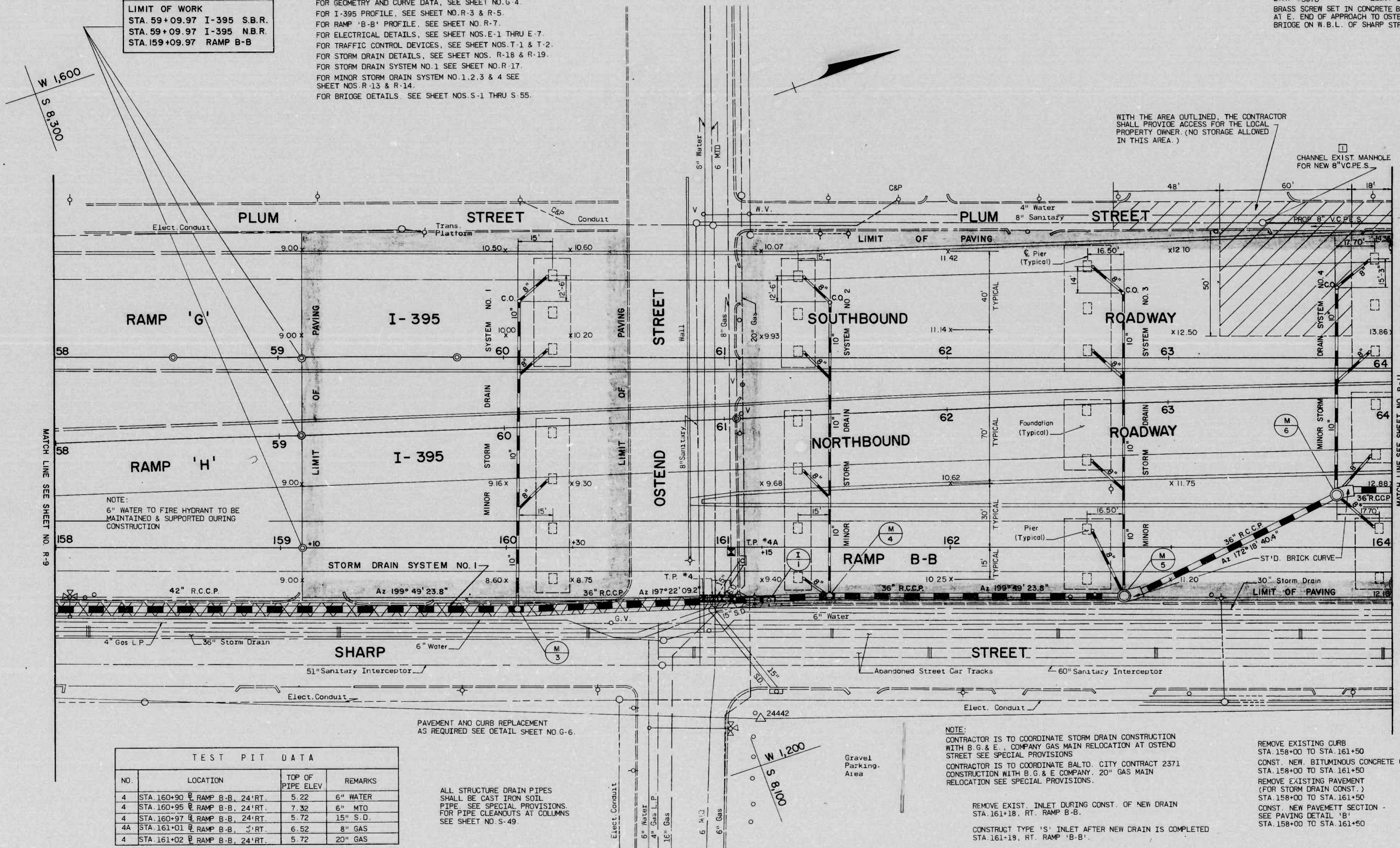
REFERENCE DRAWINGS

FOR TYPICAL SECTIONS, SEE SHEET NO. G-3.  
 FOR GEOMETRY AND CURVE DATA, SEE SHEET NO. G-4.  
 FOR I-395 PROFILE, SEE SHEET NO. R-3 & R-5.  
 FOR RAMP 'B-B' PROFILE, SEE SHEET NO. R-7.  
 FOR ELECTRICAL DETAILS, SEE SHEET NOS. E-1 THRU E-7.  
 FOR TRAFFIC CONTROL DEVICES, SEE SHEET NOS. T-1 & T-2.  
 FOR STORM DRAIN DETAILS, SEE SHEET NOS. R-18 & R-19.  
 FOR STORM DRAIN SYSTEM NO. 1 SEE SHEET NO. R-17.  
 FOR MINOR STORM DRAIN SYSTEM NO. 1, 2, 3 & 4 SEE SHEET NOS. R-13 & R-14.  
 FOR BRIDGE DETAILS, SEE SHEET NOS. S-1 THRU S-55.

LIMIT OF WORK  
 STA. 59+09.97 I-395 S.B.R.  
 STA. 59+09.97 I-395 N.B.R.  
 STA. 159+09.97 RAMP B-B

FHWA REGION	STATE	FED. AID PROJ. NO.	SHEET NO.	TOTAL SHEETS
3	MD.	I-395-8(7)0	R-10	92

B.M. #5370 ELEV. 9.700  
 BRASS SCREW SET IN CONCRETE BASE  
 AT E. END OF APPROACH TO OSTEND ST.  
 BRIDGE ON W.B.L. OF SHARP STREET



TEST PIT DATA			
NO.	LOCATION	TOP OF PIPE ELEV.	REMARKS
4	STA. 160+90 @ RAMP B-B, 24' RT.	5.22	6" WATER
4	STA. 160+95 @ RAMP B-B, 24' RT.	7.32	6" MTO
4	STA. 160+97 @ RAMP B-B, 24' RT.	5.72	15" S.D.
4A	STA. 161+01 @ RAMP B-B, 24' RT.	6.52	8" GAS
4	STA. 161+02 @ RAMP B-B, 24' RT.	5.72	20" GAS

ALL STRUCTURE DRAIN PIPES SHALL BE CAST IRON SOIL PIPE. SEE SPECIAL PROVISIONS FOR PIPE CLEANOUTS AT COLUMNS SEE SHEET NO. S-49.

NOTE:  
 15" STORM DRAIN - STA. 161+00: @ RAMP B-B  
 25" RIGHT - TO BE MAINTAINED & SUPPORTED DURING PIPE CONSTRUCTION.

<p>REVISIONS</p> <p>1 RED LINE REVISION NO. 1 BY E.B.A. - S&amp;T 11-30-79</p>	<p>CONSULTANT</p> <p>EBA - S &amp; T</p> <p>Consulting Engineers</p> <p>BALTIMORE, MARYLAND</p>	<p>CITY OF BALTIMORE DEPARTMENT OF PUBLIC WORKS &amp; STATE HIGHWAY ADMINISTRATION OF MARYLAND INTERSTATE DIVISION FOR BALTIMORE CITY</p> <p>INTERSTATE ROUTE 395 OSTEND STREET TO SOUTH OF HAMBURG STREET</p> <p>UTILITY PLAN</p> <p>SCALE: 1" = 20'</p>	<p>DRAWN BY J. BAKER</p> <p>TRACED BY J. BAKER</p> <p>F.A.P. NO. I-395-8(7)0</p> <p>S.H.A. NO. BC 255-6-815</p> <p>BALTO. CITY NO. 2371</p>	<p>DES. BY M. SHAH</p> <p>CHK. BY D. HUBER</p> <p>SHEET NO. 92</p> <p>R-10 of R-20</p>
--	---	---	---	--

K&E BALTIMORE 19 1183 VERGULENE, MC 4779

FHWA REGION	STATE	FED. AID PROJ. NO.	SHEET NO.	TOTAL SHEETS
3	MD.	I-395-8(7)0	R-11	92

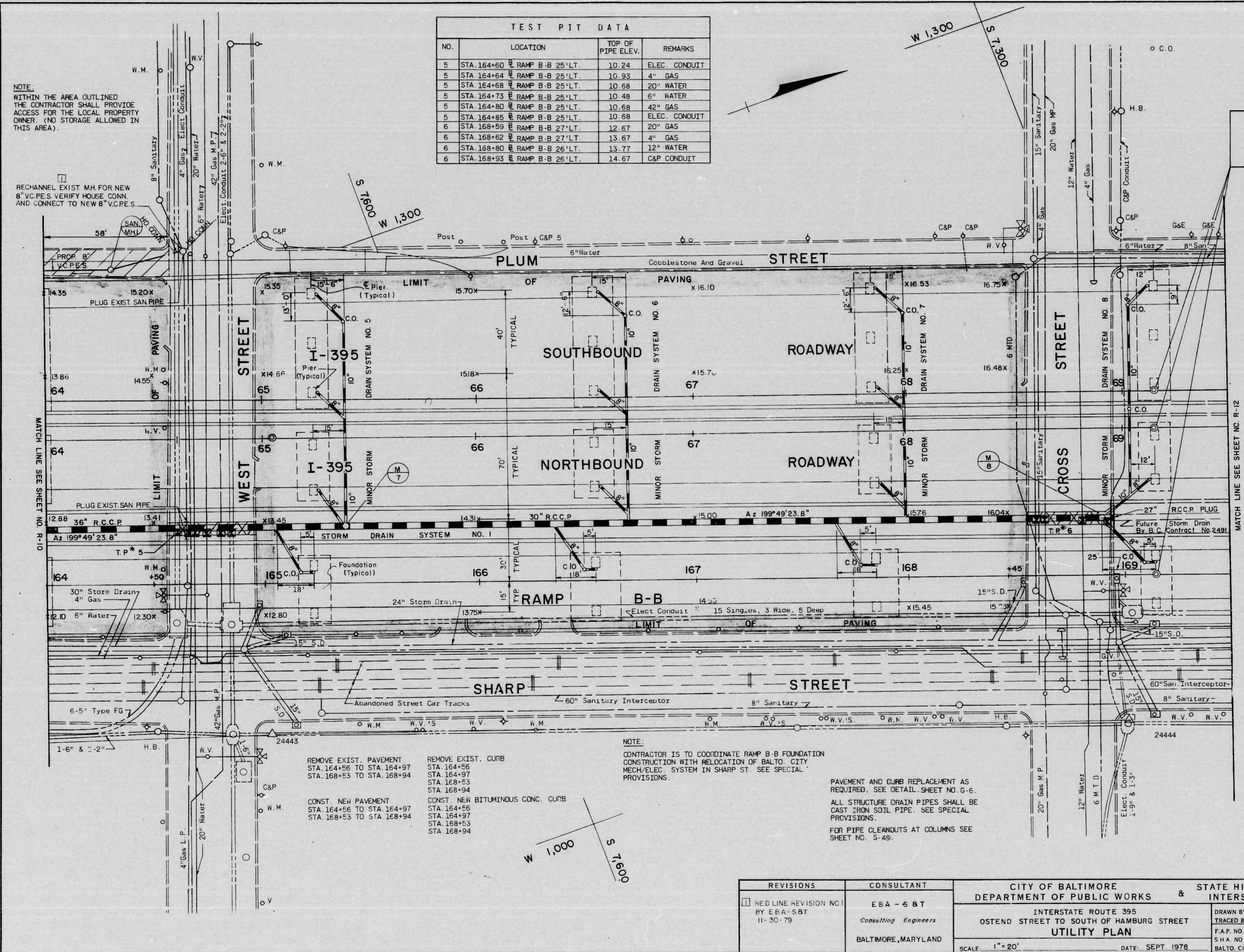
B.M. #5372 ELEV. 15.013  
BRONZE MARKER NORTH END OF CONC. FOOTING OF OSTEND STREET BRIDGE OVER B&O R.R. WEST OF HANOVER ST.

TEST PIT DATA			
NO.	LOCATION	TOP OF PIPE ELEV.	REMARKS
5	STA. 164+60 RAMP B-B 25' LT.	10.24	ELEC. CONDUIT
5	STA. 164+64 RAMP B-B 25' LT.	10.93	4" GAS
5	STA. 164+68 RAMP B-B 25' LT.	10.68	20" WATER
5	STA. 164+73 RAMP B-B 25' LT.	10.48	6" WATER
5	STA. 164+80 RAMP B-B 25' LT.	10.68	42" GAS
5	STA. 164+85 RAMP B-B 25' LT.	10.68	ELEC. CONDUIT
6	STA. 168+59 RAMP B-B 27' LT.	12.67	20" GAS
6	STA. 168+62 RAMP B-B 27' LT.	13.67	4" GAS
6	STA. 168+80 RAMP B-B 26' LT.	13.77	12" WATER
6	STA. 168+93 RAMP B-B 26' LT.	14.67	C&P CONDUIT

NOTE:  
WITHIN THE AREA OUTLINED THE CONTRACTOR SHALL PROVIDE ACCESS FOR THE LOCAL PROPERTY OWNER. (NO STORAGE ALLOWED IN THIS AREA).

RECHANNEL EXIST. MH FOR NEW 8" V.C.P.E.S. VERIFY HOUSE CONN. AND CONNECT TO NEW 8" V.C.P.E.S.

**LIMIT OF WORK**  
STA. 69+15.26 I-395 S.B.R.  
STA. 69+15.34 I-395 N.B.R.  
STA. 169+15.00 RAMP B-B



**REFERENCE DRAWINGS**

- FOR TYPICAL SECTIONS, SEE SHEET NO. G-3.
- FOR GEOMETRY AND CURVE DATA, SEE SHEET NO. G-4.
- FOR I-395 PROFILE, SEE SHEET NOS. R-4 & R-6.
- FOR RAMP 'B-B' PROFILE, SEE SHEET NO. R-8.
- FOR ELECTRICAL DETAILS, SEE SHEET NOS. E-1 THRU E-7.
- FOR TRAFFIC CONTROL DEVICES, SEE SHEET NOS. T-1 & T-2.
- FOR STORM DRAIN DETAILS, SEE SHEET NOS. R-18 & R-19.
- FOR STORM DRAIN SYSTEM NO. 1 SEE SHEET NO. R-17.
- FOR BRIDGE DETAILS, SEE SHEET NOS. S-1 THRU S-35.
- FOR MINOR STORM DRAIN SYSTEM NO. 5, 6, 7 & 8 SEE SHEET NOS. R-15 & R-16.

REMOVE EXIST. PAVEMENT STA. 164+56 TO STA. 164+97 STA. 168+53 TO STA. 168+94  
CONST. NEW PAVEMENT STA. 164+56 TO STA. 164+97 STA. 168+53 TO STA. 168+94  
REMOVE EXIST. CURB STA. 164+56 STA. 164+97 STA. 168+53 STA. 168+94  
CONST. NEW BITUMINOUS CONC. CURB STA. 164+56 STA. 164+97 STA. 168+53 STA. 168+94

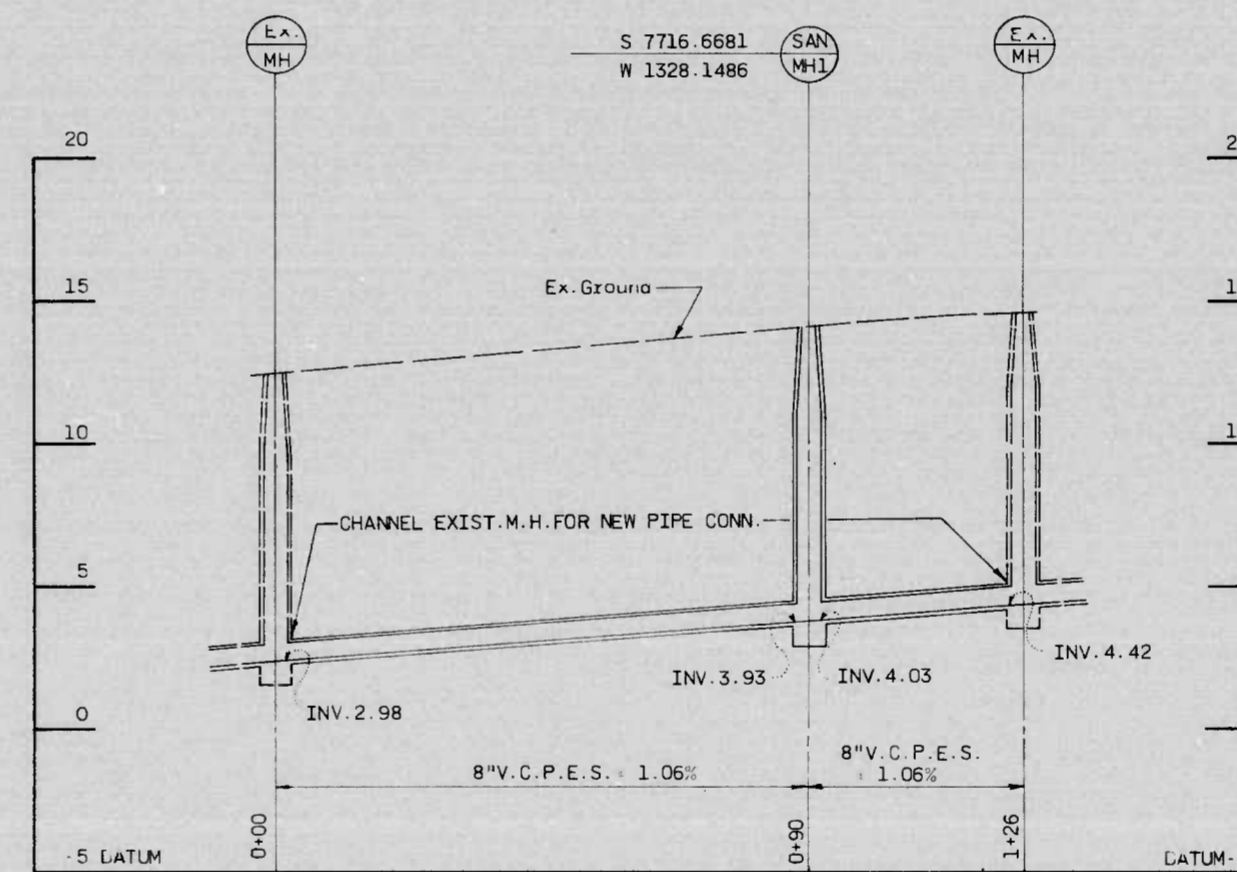
NOTE:  
CONTRACTOR IS TO COORDINATE RAMP B-B FOUNDATION CONSTRUCTION WITH RELOCATION OF BALTO. CITY MECH./ELEC. SYSTEM IN SHARP ST. SEE SPECIAL PROVISIONS.

PAVEMENT AND CURB REPLACEMENT AS REQUIRED. SEE DETAIL SHEET NO. G-6.  
ALL STRUCTURE DRAIN PIPES SHALL BE CAST IRON SOIL PIPE. SEE SPECIAL PROVISIONS.  
FOR PIPE CLEANOUTS AT COLUMNS SEE SHEET NO. S-45.

REVISIONS RED LINE REVISION NO. 1 BY EBA-S&T 11-30-79	CONSULTANT EBA-S&T Consulting Engineers BALTIMORE, MARYLAND	CITY OF BALTIMORE DEPARTMENT OF PUBLIC WORKS & STATE HIGHWAY ADMINISTRATION OF MARYLAND INTERSTATE DIVISION FOR BALTIMORE CITY	
		INTERSTATE ROUTE 395 OSTEND STREET TO SOUTH OF HAMBURG STREET <b>UTILITY PLAN</b>	
SCALE 1" = 20' DATE: SEPT. 1978		DRAWN BY A. CLARK TRACED BY A. CLARK F.A.P. NO. I-395-8(7)0 S.H.A. NO. BC 255-6-815 BALTO. CITY NO. 2371	DES. BY M. SHAH CHK. BY D. HUBER SHEET NO. 92 R-11 OF R-20

K&E BALTIMORE 19 1183 MERCULENE MC 7914

F.W.A. REGION	STATE	FED. AID PROJ. NO.	SHEET NO.	TOTAL SHEETS
3	MD.	I-395-8(7)0	R-11a	R-20

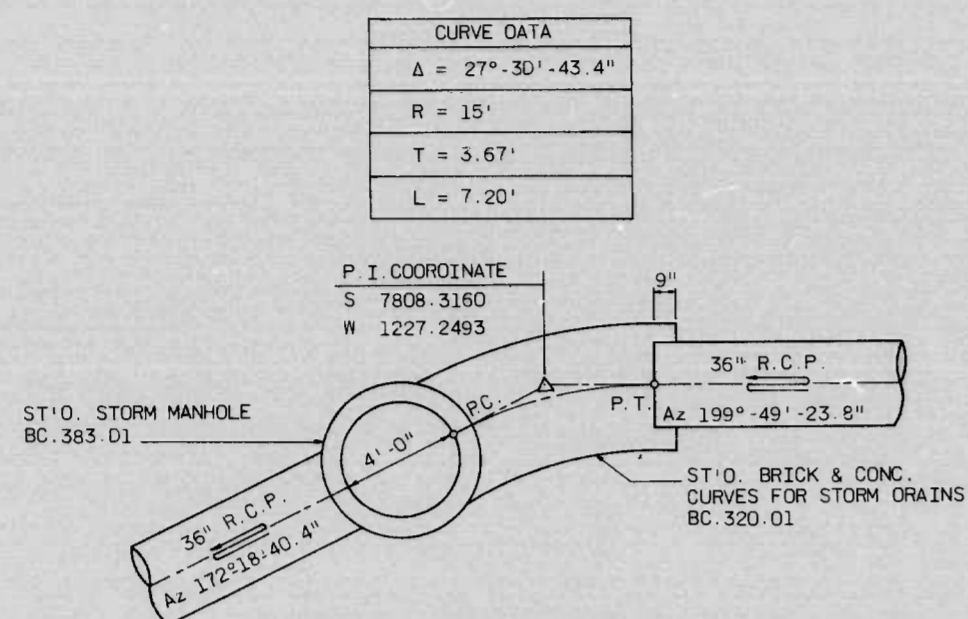


NEW 8" SANITARY SEWER IN PLUM ST.

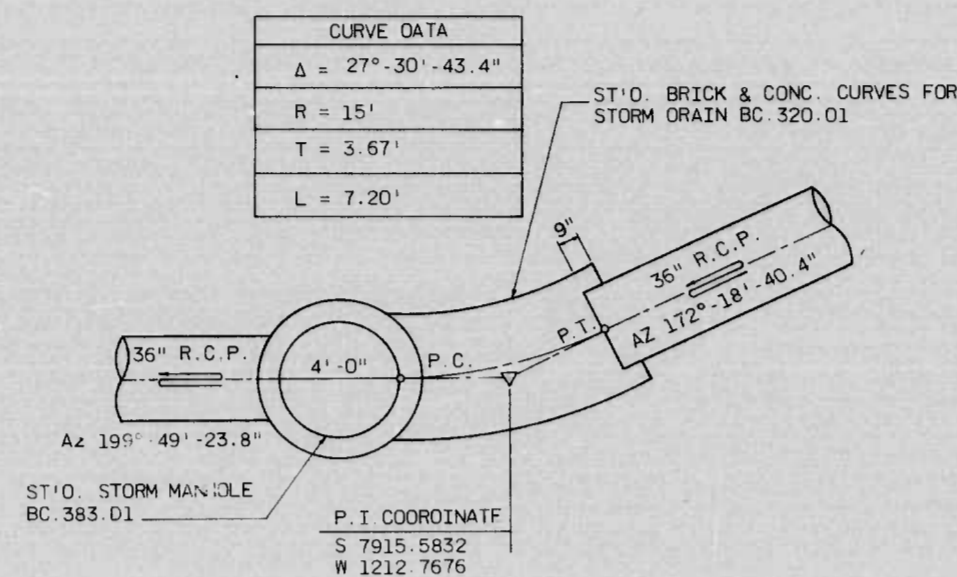
REVISIONS	CONSULTANT	CITY OF BALTIMORE DEPARTMENT OF PUBLIC WORKS	STATE HIGHWAY ADMINISTRATION OF MARYLAND INTERSTATE DIVISION FOR BALTIMORE CITY
1 RED LINE REVISION NO. 1 BY E.B.A.-S.B.T. ADD NEW SHEET 11-30-79	E.B.A.-S.B.T. Consulting Engineers BALTIMORE, MARYLAND	INTERSTATE ROUTE 395 OSTEND STREET TO SOUTH OF HAMBURG STREET SANITARY PROFILE SCALE: 1"=20' HORIZ. 1"=4' VERT. DATE: NOV. 1979	DRAWN BY J. BAKER TRACED BY J. BAKER F.A.P. NO. I-395-8(7)0 S.H.A. NO. BC 255-6-815 BALTO. CITY NO. 2371
			DES. BY D. HUBER CHK. BY D. HUBER SHEET NO. 92 R-11a of R-20



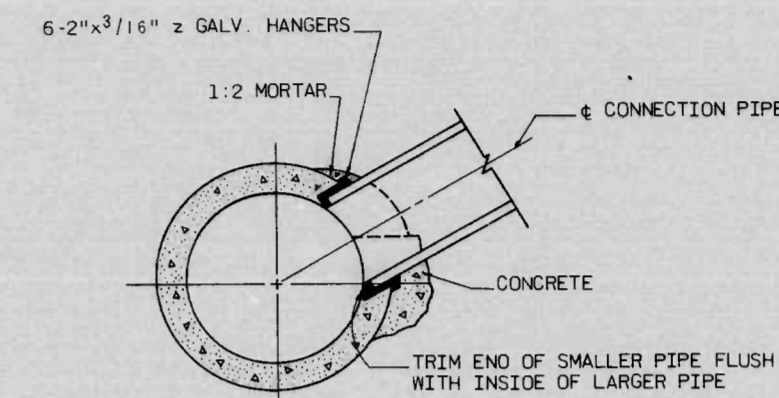
3	MD. I-395-6(7)0	R-18	R-20
---	-----------------	------	------



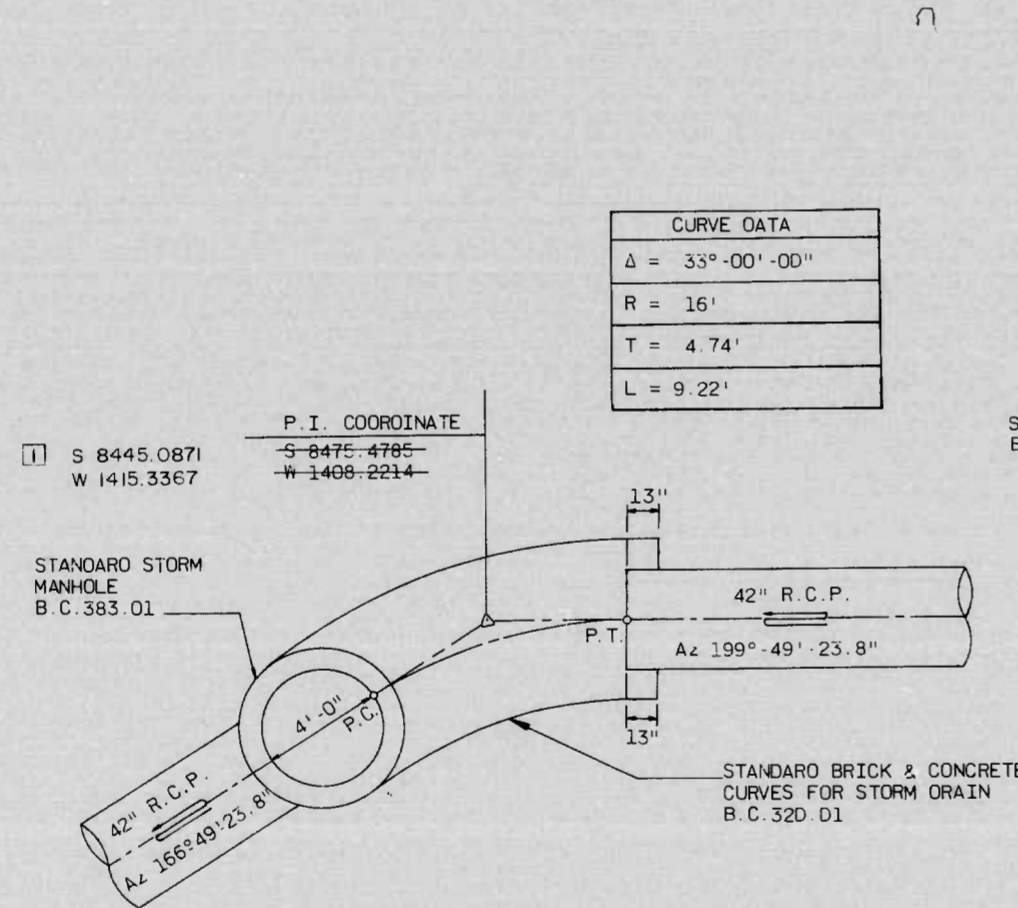
GEOMETRIC DETAIL - (M-6)  
SCALE: 1" = 4'



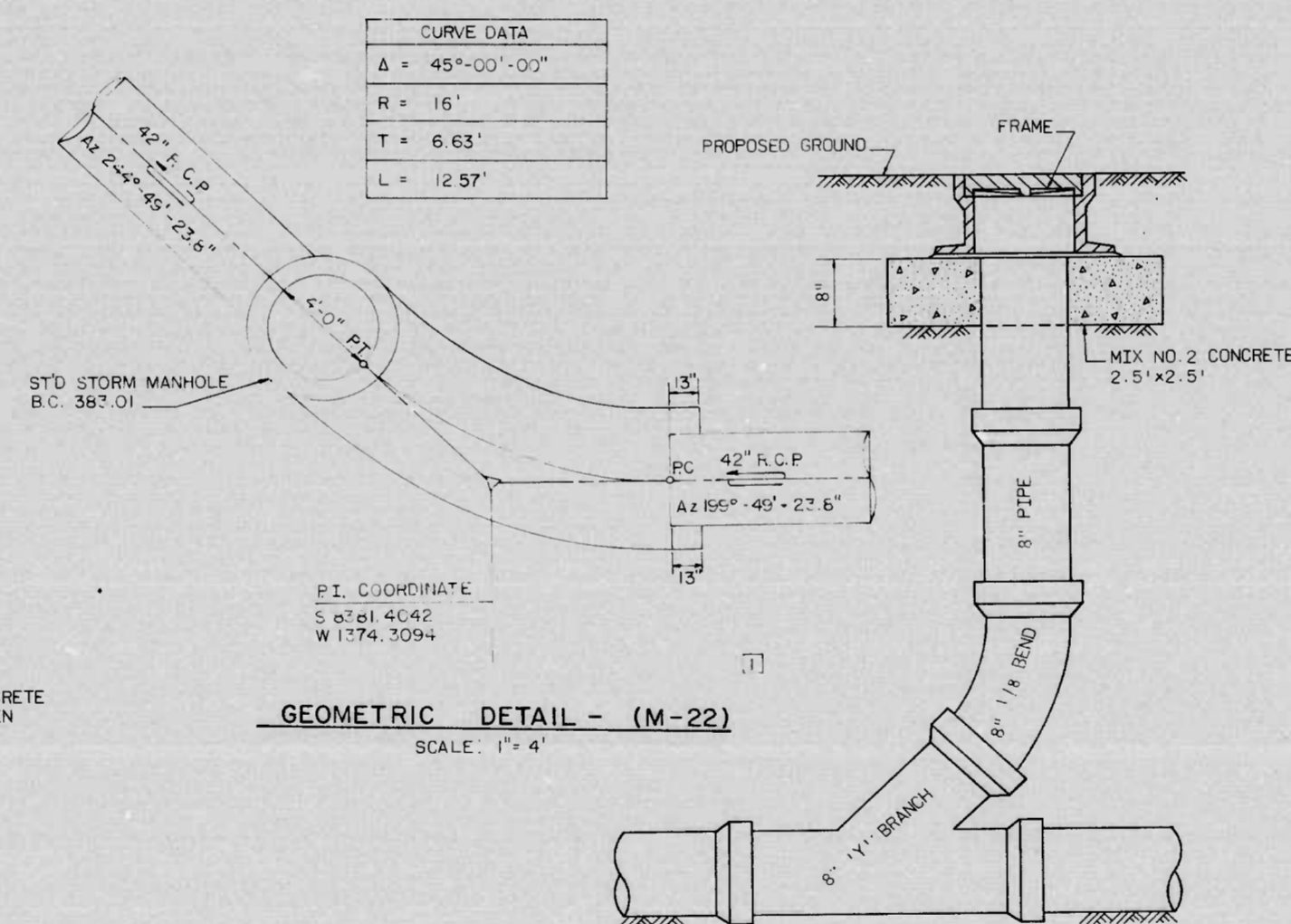
GEOMETRIC DETAIL - (M-5)  
SCALE: 1" = 4'



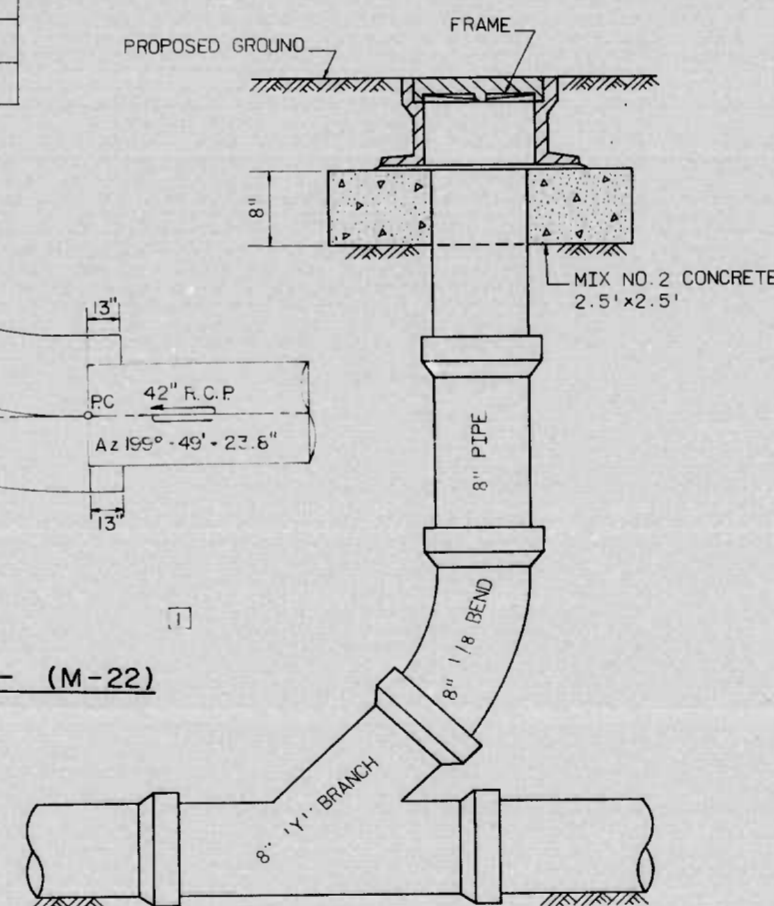
COLLAR TAP  
NOT TO SCALE



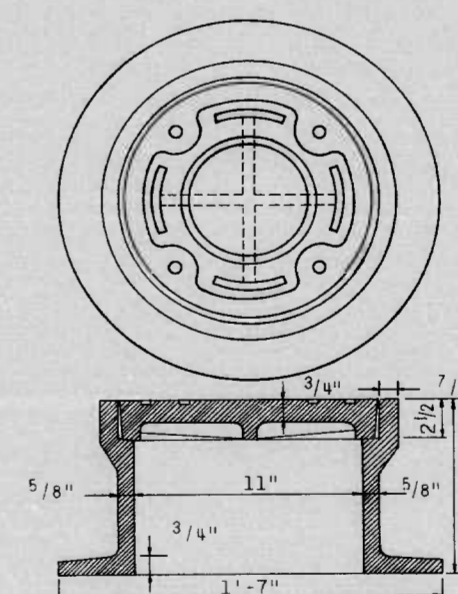
GEOMETRIC DETAIL - (M-2)  
SCALE: 1" = 4'



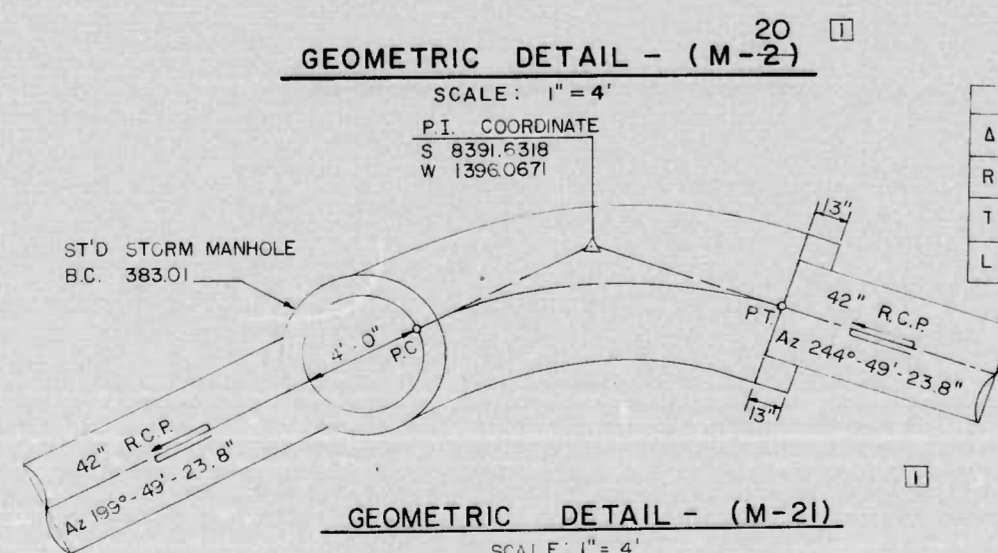
GEOMETRIC DETAIL - (M-22)  
SCALE: 1" = 4'



DETAIL- 8" C.I.P. CLEANOUT  
SCALE: 1/4" = 1'



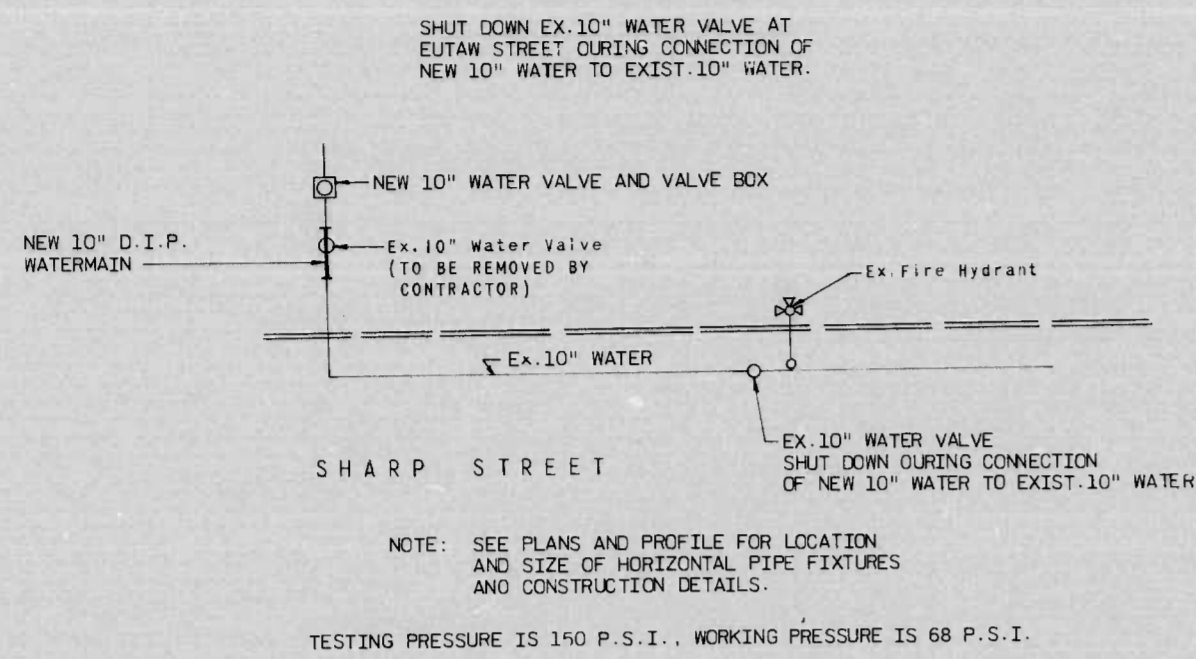
DETAIL-CLEANOUT FRAME & COVER  
SCALE: 1/2" = 1'



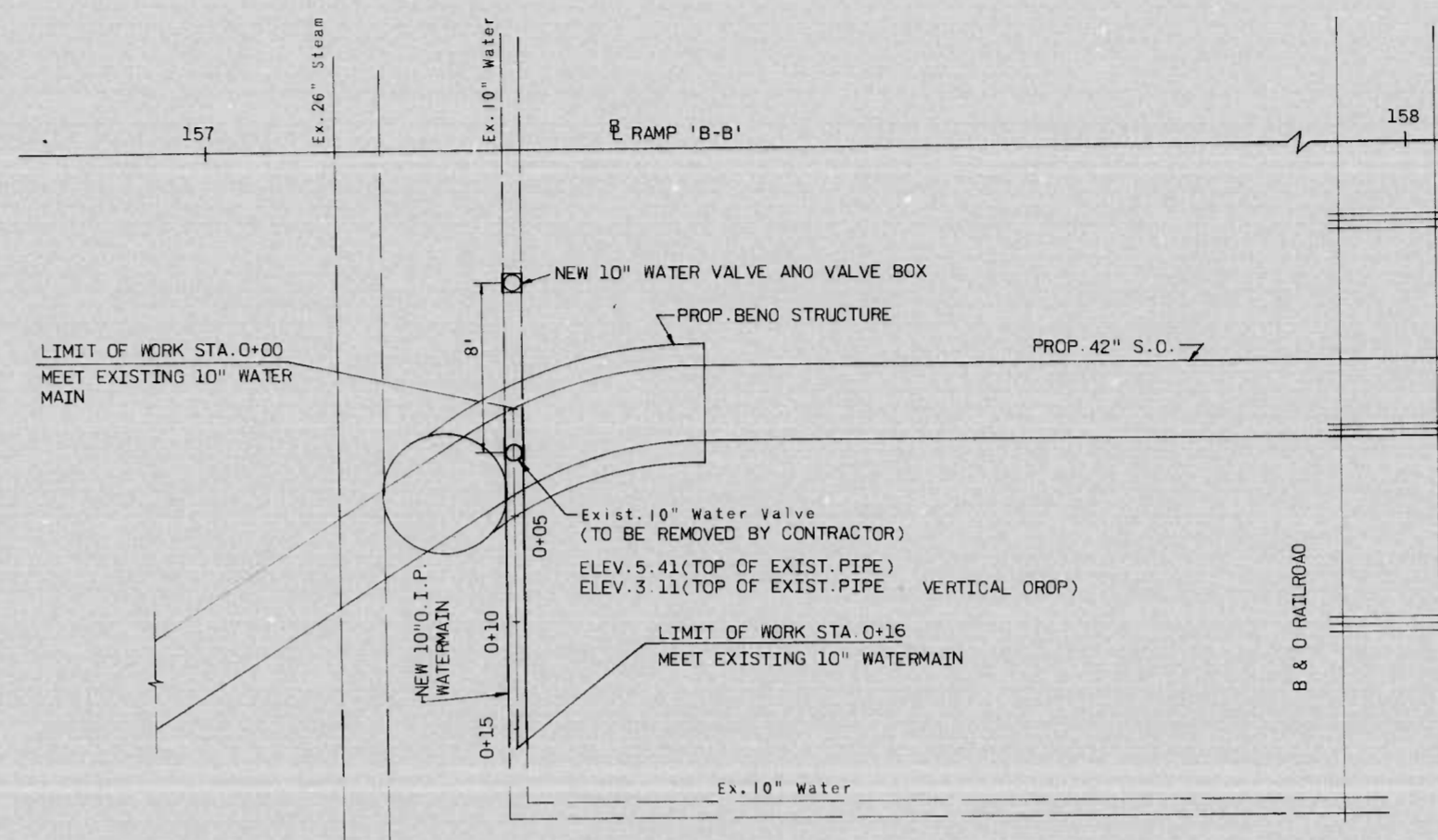
GEOMETRIC DETAIL - (M-21)  
SCALE: 1" = 4'

<b>REVISIONS</b> 1 RED LINE REVISION NO.1 BY EBA-S&T 11-30-79	<b>CONSULTANT</b> EBA - S & T <i>Consulting Engineers</i> BALTIMORE, MARYLAND	CITY OF BALTIMORE DEPARTMENT OF PUBLIC WORKS & STATE HIGHWAY ADMINISTRATION OF MARYLAND INTERSTATE DIVISION FOR BALTIMORE CITY	
		INTERSTATE ROUTE 395 OSTEND STREET TO SOUTH OF HAMBURG STREET <b>STORM DRAIN DETAILS</b>	
SCALE: AS NOTED DATE: SEPT. 1978		DRAWN BY J. BAKER/A. CLARK TRACED BY J. BAKER	DES. BY M. SHAH CHK. BY D. HUBER
		F.A.P. NO. I-395-81710 S.H.A. NO. B.C. 255-6-815 BALTO. CITY NO. 2371	SHEET NO. 92 R-18 OF R-20

FED. REGION	STATE	FED. AID PROJ. NO.	SHEET NO.	TOTAL SHEETS
3	MD.	I-395-B(7)D	R-20a	92

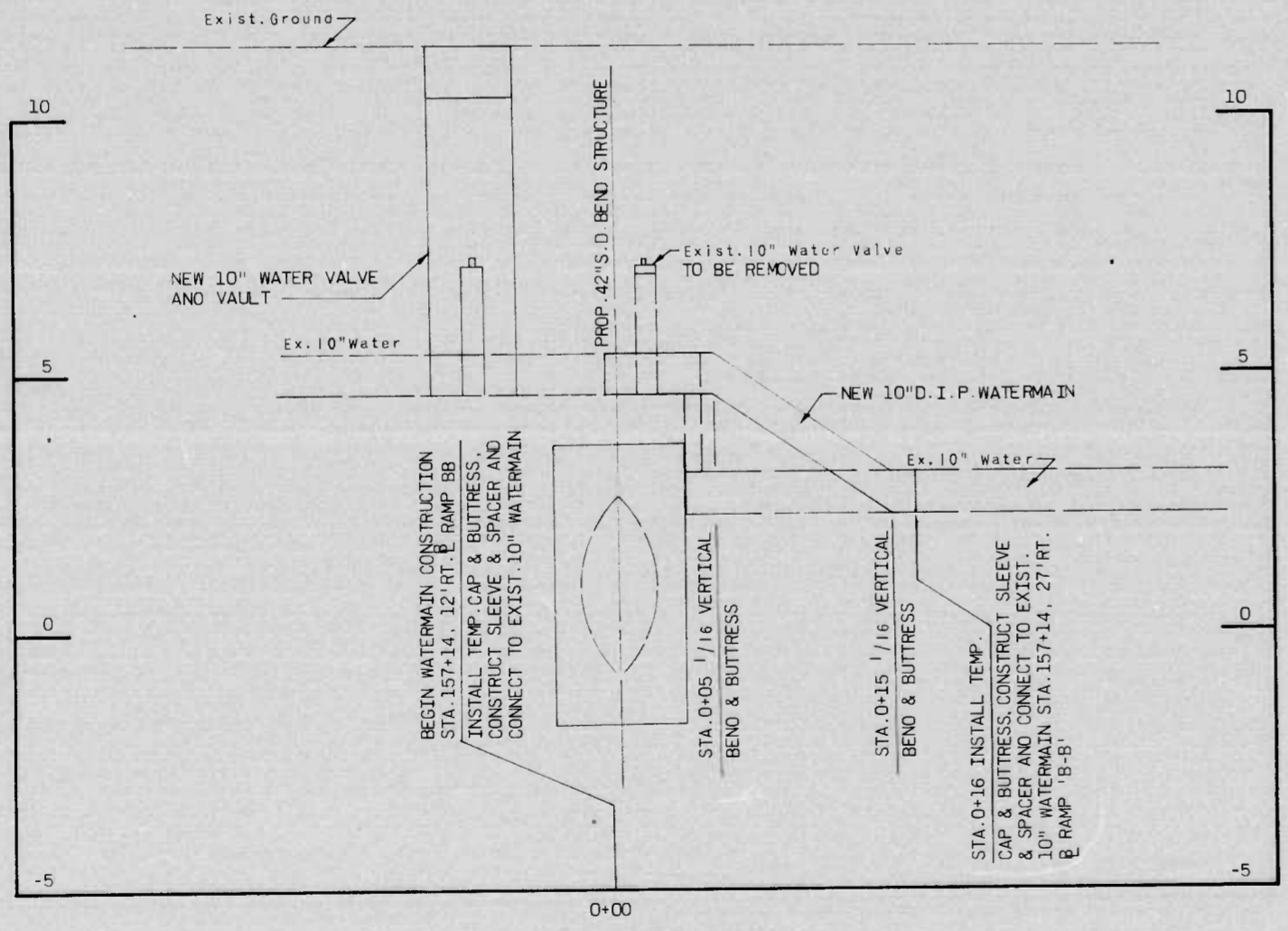


**SHUT-DOWN DETAIL**  
**10" WATER MAIN**  
NOT TO SCALE



**PLAN OF WATER MAIN CONSTRUCTION**  
SCALE: 1" = 5'

- NOTES:**
- ACTUAL TOP OF PIPE ELEVATIONS FOR WATERMAINS ARE TO BE DETERMINED BY THE CONTRACTOR IN THE FIELD. A (4) FOUR FOOT COVER AND A (6) SIX INCH MINIMUM CLEARANCE FROM ALL UTILITIES SHALL BE MAINTAINED.
  - CONTRACTOR SHALL VERIFY THE LOCATION OF EXISTING UTILITIES THAT CROSS THE PROPOSED WATERMAIN AND ADJUST WATERMAIN AS REQUIRED.
  - BACKFILL THE CROSSING OF 10" WATER AND 42" STORM DRAIN WITH NO. 6 AGGREGATE.
- CONSTRUCTION SEQUENCE FOR 10" WATER VALVE RELOCATION AND WATERMAIN CONSTRUCTION:**
- SHUT DOWN EXIST. WATERMAIN AS DETAILED.
  - CONSTRUCT NEW CONCRETE VALVE BOX (BC STD. 890.01 AND 890.02) AND NEW 10" VALVE, MECHANICAL JOINT, CLASS 150 DIMENSIONS.
  - TEMPORARY CAP AND BUTTRESS TO BE INSTALLED AT LIMITS OF WORK.
  - REMOVE EXIST. 10" WATERMAIN AND VALVE BETWEEN THE LIMITS OF WORK.
  - CONSTRUCT 10" WATERMAIN AS SHOWN.
  - REMOVE TEMPORARY CAP & BUTTRESS & CONNECT NEW 10" D.I.P. TO EXISTING 10" WATER.
  - RETURN EXISTING 10-INCH WATERMAIN TO SERVICE.

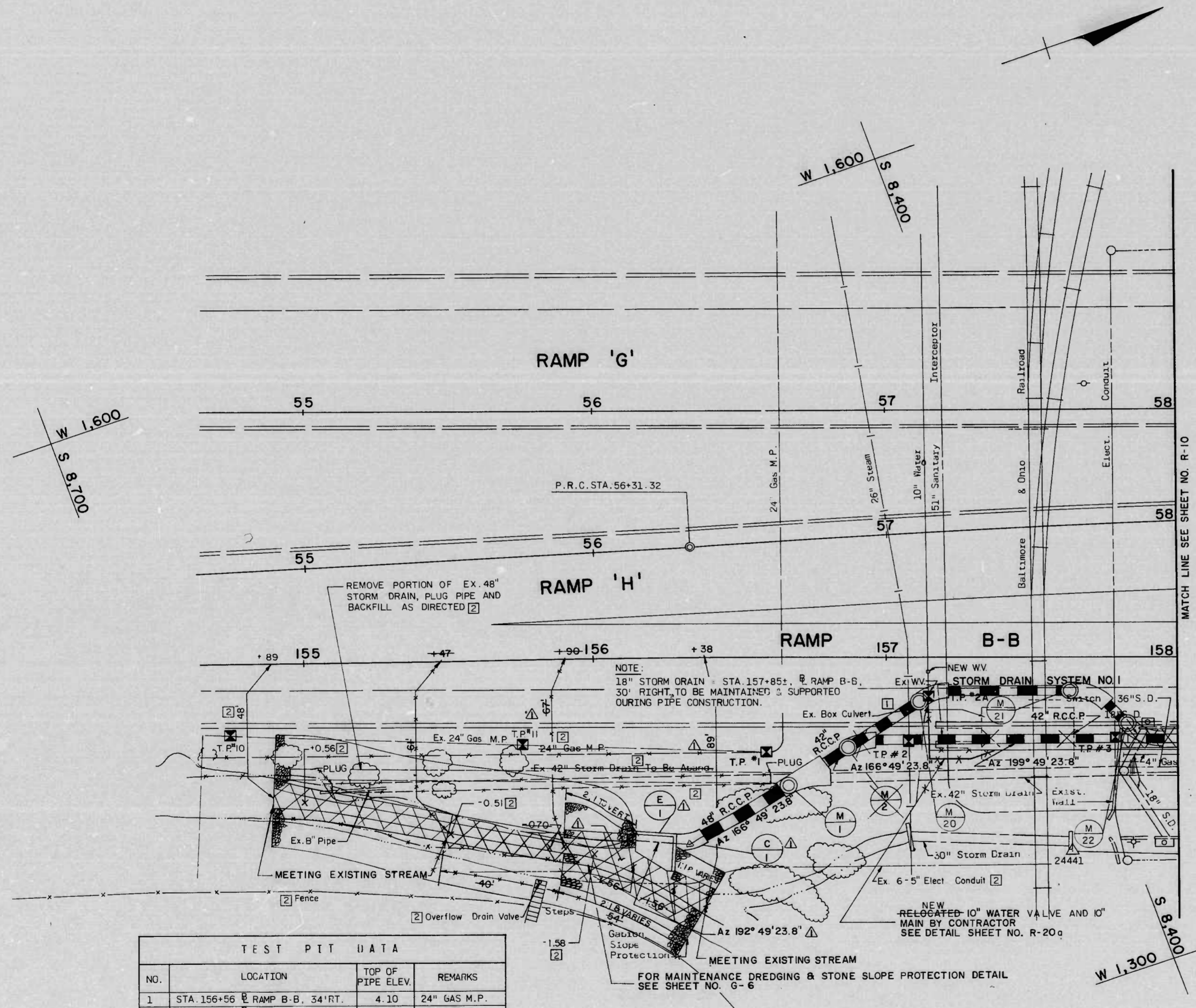


**10" WATER MAIN**  
SCALE: HORIZ 1" = 5'  
VERT 1" = 2'

<b>REVISIONS</b> ADD NEW SHEET BY EBA-S&T 11-30-79	<b>CONSULTANT</b> EBA S & T Consulting Engineers BALTIMORE, MARYLAND	CITY OF BALTIMORE DEPARTMENT OF PUBLIC WORKS & STATE HIGHWAY ADMINISTRATION OF MARYLAND INTERSTATE DIVISION FOR BALTIMORE CITY	
		INTERSTATE ROUTE 395 OSTEND STREET TO SOUTH OF HAMBURG STREET <b>WATER MAIN CONSTRUCTION</b>	
SCALE: AS SHOWN DATE: NOV., 1979		DRAWN BY J. BAKER / A. CLARK TRACED BY J. BAKER	DES. BY W. BEHAN CHK. BY D. HILGERT
		F.A.P. NO. I-395-B(7)D S.H.A. NO. BC 255-6-815 BALTO. CITY NO. 2371	SHEET NO. 92 R-20a of R-20



FHWA REGION	STATE	FED. AID PROJ. NO.	SHEET NO.	TOTAL SHEETS
3	MD.	I-395-8(7)0	R-9	92 R-20



REMOVE EXIST. CURB  
STA. 157+88 TO STA. 158+00  
CONST. NEW BITUMINOUS CONCRETE CURB

REMOVE EXIST. PAVEMENT (STORM DRAIN CONST.)  
STA. 157+80 TO STA. 158+00  
CONST. NEW PAVEMENT SECTION. SEE PAVING DETAIL 'B' SHT. NO. G-6  
STA. 157+80 TO STA. 158+00

REFERENCE DRAWINGS

FOR TYPICAL SECTIONS, SEE SHEET NO. G-3  
FOR GEOMETRY AND CURVE DATA, SEE SHEET NO. G-4  
FOR I-395 PROFILE, SEE SHEET NOS. R-3 & R-5  
FOR RAMP 'B-B' PROFILE, SEE SHEET NO. R-7  
FOR ELECTRICAL DETAILS, SEE SHEET NOS. E-1 THRU E-7  
FOR TRAFFIC CONTROL DEVICES, SEE SHEET NOS. T-1 & T-2  
FOR STORM DRAIN DETAILS, SEE SHEET NOS. R-18 & R-19  
FOR STORM DRAIN SYSTEM NO. 1 SEE SHEET NO. R-17  
FOR BRIDGE DETAILS, SEE SHEET NOS. S-1 THRU S-55  
FOR WATER MAIN PROFILES & DETAILS, SEE SHEET NO. R-20

NO.	LOCATION	TOP OF PIPE ELEV.	REMARKS
1	STA. 156+56 RAMP B-B, 34' RT.	4.10	24" GAS M.P.
2	STA. 157+06 RAMP B-B, 30' RT.	9.26	26" STEAM
2A	STA. 157+15 RAMP B-B, 14' RT.	5.11	10" WATER
3	STA. 157+78 RAMP B-B, 30' RT.	4.51	ELECT. CONDUIT
10	STA. 54+75 B RAMP G, 116' RT.	2.98	24" GAS M.P.
11	STA. 55+76 B RAMP G, 120' RT.	3.40	24" GAS M.P.

<b>REVISIONS</b> ADDENDUM NO 2 BY EBA/SBT 11-29-78 RED LINE REVISION NO 1 BY EBA-SBT 11-30-79 RED LINE REVISION NO 2 BY EBA-SBT 1-21-81	<b>CONSULTANT</b> EBA-S&T Consulting Engineers BALTIMORE, MARYLAND	CITY OF BALTIMORE DEPARTMENT OF PUBLIC WORKS & INTERSTATE ROUTE 395 OSTEND STREET TO SOUTH OF HAMBURG STREET <b>UTILITY PLAN</b>	STATE HIGHWAY ADMINISTRATION OF MARYLAND INTERSTATE DIVISION FOR BALTIMORE CITY DRAWN BY J. BAKER TRACED BY J. BAKER F.A.P. NO. I-395-8(7)0 S.H.A. NO. BC 255-6-915 BALTO. CITY NO. 2371	DES. BY M. SHAH CHK. BY D. HUBER SHEET NO. 92 R-9 OF R-20
--	---	--	--	--

SCALE: 1" = 20' DATE: SEPT. 1978

FHWA REGION	STATE	FED AID PROJ. NO.	SHEET NO.	TOTAL SHEETS
3	MD.	I-395-8(7)0	G-1	6-6

INDEX OF DRAWINGS

G-1 TITLE SHEET	S-32 FIXED BEARING DETAILS
G-2 GENERAL NOTES & LEGEND	S-33 EXPANSION BEARING DETAILS
G-3 TYPICAL SECTIONS I-395	S-34 FIELD SPLICES & DETAILS
G-4 GEOMETRIC CONTROLS	S-35 EXPANSION JOINT DETAILS
G-5 REFERENCE HUBS	S-36 SLAB POURING SEQUENCE
G-6 ROADWAY DETAILS	S-37 DECK ELEVATIONS UNIT S-1
	S-38 DECK ELEVATIONS UNIT S-2
R-1 PLAN I-395 & RAMP B-B	S-39 DECK ELEVATIONS UNIT S-3
R-2 PLAN I-395 & RAMP B-B	S-40 DECK ELEV. & CAMBER SCHEDULE UNIT N-1
R-3 PROFILE I-395 N.B.R.	S-41 DECK ELEVATIONS UNIT N-2
R-4 PROFILE I-395 S.B.R.	S-42 DECK ELEVATIONS UNIT N-3
R-5 PROFILE I-395 S.B.R.	S-43 DECK ELEVATIONS UNIT B-1
R-6 PROFILE I-395 S.B.R.	S-44 DECK ELEVATIONS UNIT B-2
R-7 PROFILE RAMP B-B	S-45 GORE DETAILS
R-8 PROFILE RAMP B-B	S-46 BRIDGE SIGN BRACKET DETAILS
R-9 UTILITY PLAN	S-47 CANTILEVER SIGN BRACKET DETAILS
R-10 UTILITY PLAN	S-48 STRUCTURE DRAINAGE
R-11 UTILITY PLAN	S-49 DRAINAGE DETAILS
R-12 UTILITY PLAN	S-50 SCUPPER DETAILS
R-13 STORM DRAIN PROFILES	S-51 BORING LOGS
R-14 STORM DRAIN PROFILES	S-52 BORING LOGS
R-15 STORM DRAIN PROFILES	S-53 BORING LOGS
R-16 STORM DRAIN PROFILES	S-54 BORING LOGS
R-17 STORM DRAIN PROFILES	S-55 BORING LOGS
R-18 STORM DRAIN DETAILS	Q-1 SUMMARY OF QUANTITIES
R-19 STORM DRAIN DETAILS	
R-20 WATER MAIN RELOCATION	<input type="checkbox"/> DELETE PLAN SHEET
R-20a ADD NEW PLAN SHEET	<input type="checkbox"/> ADD NEW PLAN SHEET R-11a
T-1 PLAN - TRAFFIC DEVICES	
T-2 ATTENUATOR DEVICES	
E-1 CONDUIT INSTALLATION PLAN	<input type="checkbox"/> E-1A UTILITY SERVICE DUCT PLAN
E-2 MECH./ELEC. DUCT RELOCATION PLAN	
E-3 MECH./ELEC. DUCT RELOCATION PLAN	
E-4 MECH./ELEC. DUCT RELOCATION PROFILE	<input type="checkbox"/> E-4A PLUM STREET DUCT PROFILES
E-5 CONDUIT INSTALLATION DETAILS	
E-6 CONDUIT INSTALLATION DETAILS	
E-7 MECH./ELEC. DUCT MANHOLE DETAILS	<input type="checkbox"/> E-7A PLUM STREET DUCT MANHOLE DETAILS
E-8 MECH./ELEC. DUCT MANHOLE DETAILS	
S-1 GENERAL NOTES	
S-2 PLAN I-395 & RAMP B-B	
S-3 ELEVATION I-395 & RAMP B-B	
S-4 FOUNDATION PLAN I	
S-5 FOUNDATION PLAN II	
S-6 ELEVATION - PIER LINES 1 & 2	
S-7 ELEVATION - PIER LINES 3 & 4	
S-8 ELEVATION - PIER LINES 5 & 6	
S-9 ELEVATION - PIER LINES 7 & 8	
S-10 FOOTING DETAILS I-395 S.B.R.	
S-11 FOOTING DETAILS I-395 N.B.R. & RAMP B-B	
S-12 FOOTING DETAILS I-395 N.B.R. & RAMP B-B	
S-13 PILE DETAILS	
S-14 MISCELLANEOUS DETAILS	
S-15 PIER COLUMN DETAILS	
S-16 COLUMN TOP PLANS - I	
S-17 COLUMN TOP PLANS - II	
S-18 COLUMN TOP PLANS - III	
S-19 FRAMING UNIT S-1	
S-20 FRAMING UNIT S-2	
S-21 FRAMING UNIT S-3	
S-22 FRAMING UNIT N-1	
S-23 FRAMING UNIT N-2	
S-24 FRAMING UNIT N-3	
S-25 FRAMING UNIT B-1	
S-26 FRAMING UNIT B-2	
S-27 CAMBER SCHEDULE UNITS S-1, S-2, & S-3	
S-28 CAMBER SCHEDULE UNITS N-2, N-3, B-1 & B-2	
S-29 TYPICAL CROSS SECTIONS	
S-30 TYPICAL SECTIONS & DETAILS	
S-31 TYPICAL SECTIONS & DETAILS	

CITY OF BALTIMORE  
DEPARTMENT OF PUBLIC WORKS  
AND  
STATE HIGHWAY ADMINISTRATION OF MARYLAND  
INTERSTATE DIVISION FOR BALTIMORE CITY  
FEDERAL AID PROJECT NO. I-395-8(7)0  
STATE HIGHWAY ADMINISTRATION PROJECT NO. BC 255-6-815  
CITY OF BALTIMORE BUREAU OF ENGINEERING  
HIGHWAY ENGINEERING DIVISION CONTRACT NO. 2371

# INTERSTATE ROUTE 395

## OSTEND STREET TO SOUTH OF HAMBURG STREET

**LIMIT OF WORK**  
STA 69+15.26 @ I-395 S.B.R.  
STA 69+15.34 @ I-395 N.B.R.  
STA 159+15.00 @ RAMP B-B  
STA 159+09.97 @ RAMP B-B AHD  
F.A.P. NO I-395-8(7)0  
S.H.A. NO BC 255-6-815  
BALTIMORE CITY, NO. 2371



**LIMIT OF WORK**  
STA 59+00.00 @ RAMP 'G' BK =  
STA 59+09.97 @ I-395 NBR & SBR AHD.  
STA 159+10.00 @ RAMP B-B BK =  
STA 159+09.97 @ RAMP B-B AHD  
F.A.P. NO I-395-8(7)0  
S.H.A. NO BC 255-6-815  
BALTIMORE CITY, NO. 2371

LOCATION PLAN  
SCALE 1" = 500'  
DESIGN SPEED - 50 M.P.H.

**NOTE:**  
EFFECTIVE JULY 1, 1971, IN ACCORDANCE WITH THE PROVISIONS OF CHAPTER 526 OF ACTS OF THE 1970 GENERAL ASSEMBLY, WHEREVER THE TITLE "STATE ROADS COMMISSION" AND/OR TERM COMMISSION IS USED, IT SHALL BE CONSTRUED TO BE THE "STATE HIGHWAY ADMINISTRATION".

**NOTICE TO CONTRACTOR:**  
IT SHALL BE THE TOTAL RESPONSIBILITY OF THE CONTRACTOR ON THIS CONTRACT TO COORDINATE ALL OF HIS ACTIVITIES, INCLUDING THOSE OF HIS SUBCONTRACTORS WITH THE CONTRACTORS, SUBCONTRACTORS AND BALTIMORE CITY FORCES WORKING ON ADJACENT PROJECTS, NAMELY BALTIMORE CITY CONTRACT NO. 2271-R AND ADJOINING CONTRACT OF DESIGN SEGMENT 'F' B.C. CONTRACT NO. 2491.

FIELD BOOKS	
BOOK No.	DESCRIPTION
I-95-43	TRAVERSE
I-95-50	LEVELS
I-95-45	TOPO
I-95-53	TOPO
I-95-59	CROSS SECTION

TRAFFIC DATA			
INTERSTATE ROUTE 395 OSTEND STREET TO SOUTH OF HAMBURG STREET			
	NB	SB	B-B
1975 ADT	22,292	22,163	3,474
1995 ADT	27,016	29,146	4,107
1995 DHV & PEAK HR.	2,182	2,764	267
% TRUCKS	10%	10%	10%
MAX. CURVATURE MAINLINE	0°45'00"		MAX. GRADE +1.320%
RAMP			+3.994%

INTERSTATE DIVISION FOR BALTIMORE CITY  
APPROVED  
*[Signature]* #251  
EPA 11-29-78  
SEDIMENTATION AND EROSION CONTROL OFFICER

REVISIONS	
<input type="checkbox"/>	ADDENDUM NO. 2 BY EBA S&T 11-29-78

CHECKED BY	INITIALS	DATE
BUREAU OF ENGINEERING	<i>[Initials]</i>	9/15/78
WASTE WATER DIVISION	<i>[Initials]</i>	9/15/78
HIGHWAY ENGINEERING DIVISION	<i>[Initials]</i>	9/15/78
SURVEY AND RECORDS DIVISION	<i>[Initials]</i>	11/16/78
BUREAU OF UTILITY OPERATIONS	<i>[Initials]</i>	11/16/78
LIGHTING SECTION - HIGHWAY MAINTENANCE DIV.	<i>[Initials]</i>	11/16/78
CONDUIT SECTION - HIGHWAY MAINTENANCE DIV.	<i>[Initials]</i>	11/16/78
BUREAU OF UTILITIES - I.D.B.C.	<i>[Initials]</i>	11/16/78
DEPARTMENT OF TRANSIT AND TRAFFIC	<i>[Initials]</i>	9/15/78

CITY OF BALTIMORE  
DEPARTMENT OF PUBLIC WORKS  
APPROVAL RECOMMENDED  
*[Signature]*  
HEAD, BUREAU OF ENGINEERING  
APPROVED  
*[Signature]*  
DIRECTOR OF PUBLIC WORKS

PREPARED BY  
EWELL, BOMHARDT & ASSOC.  
SANDERS & THOMAS INC.  
Consulting Engineers  
BALTIMORE, MARYLAND  
*[Signature]*  
DATE

STATE HIGHWAY ADMINISTRATION OF MARYLAND  
REVIEWED AND APPROVAL RECOMMENDED  
*[Signature]*  
CHIEF, BUREAU OF DESIGN  
APPROVAL RECOMMENDED  
*[Signature]*  
CHIEF, INTERSTATE DIVISION FOR BALTIMORE CITY

APPROVED  
*[Signature]*  
CHIEF ENGINEER

U.S. DEPARTMENT OF TRANSPORTATION  
FEDERAL HIGHWAY ADMINISTRATION  
APPROVED  
*[Signature]*  
DIVISION ADMINISTRATOR  
DATE