

Page of the Register
Acres Annual Rent

500 1 Covert Garden Surveyed 25th September 1683 for Michael Miller near the head of Norton Creek.

230 9.2 Hermitage

90 3.7 Nonrells Adventure

800 1.12 Town Relief Surveyed 30th June 1680 for William Rawbourn assigned James Wroth near the Head of the Westmost Branch of Fairy Creek.

200 A The Last Surveyed 10 October 1665 for John James on the South side Shunn Creek.

117 16.8 Kennards Discovery

300 12 Comegys Fancy Surveyed 25th June 1680 for William Coe and assigned Cornelius Comegys at the head of the Eastern Branch of Fairy Creek.

1000 1 Whittfield

100 .. Δ ..

White Marsh Surveyed for Francis Barney Junr January
26. 1721 Beginning at a marked hickory standing on the South side of a valley
springing out of the main Branch of Morgans Creek.

210 .. 0.5

Wingo Surveyed for Philip Kungan 19th May 1699 in Tunyo Creek
in the space between two beginning at a creek between the Shashus.

169 .. 6. qz

Standaway

700 1. 0

Providence Surveyed 7th November 1700 for Michael Miller
near the head of a branch of Farlow Creek Beginning at a bounded hickory near the
high road and near to an old bounded Tree of Crows Garden.

200 .. Δ ..

Karfield

600 1. 12

Maiden Lott Surveyed 22 August 1666 for Sarah Gomer lying
on the north side Chester River on the East side Morgans Creek.

400 .. 0 ..

Church Warden Neck Surveyed 2th January
1668 for Henry Woodchurch lying on the north side Chester River on the East
side Morgans Creek.

70 .. 2. 10

Addition Surveyed 28 February 1701 for Philip Hopkins
lying on the north side Chester River Beginning at a bounded Oak standing on
the East side Morgans Creek and Sandy point being the first bounded Tree
of the stand called Thornton.

376 " 15-1 Three Friends Surveyed 23 June 1725 for John Bradford
John Brooks and Christopher Kelleher lying on the north side of Chester River
on the East side Morgans Creek. Pat. 16 James Mason Christopher Kelleher Smith
and Hannah Brooks.

550 " 2 " Arrundell Grove Surveyed 21 June 1680 for Mary Staples
Lying in Longfords Bay.

500 " 1 " Kindness Surveyed 15 July 1695 for William Cocks lying in Chester
River in Longfords Bay

800 " 10 " East Huntington Surveyed 25 January 1642 for Andrew Sumner
Lying on the North side Chester River against the Wharfing.

500 " 10 " Boulston Surveyed 6th July 1672 for John Brooks lying on the North side
Chester River on the West side of above

200 " A " Prickle Pear Surveyed 20 August 1675 for Thomas Norris
Lying on the East side Norris's Creek.

76 " 3 " Brouards Marsh Surveyed for James Brouard 16 Decem^r
1701 Near the Mouth of Prickle Pear Creek beginning at a bounded White Oak.

122 " A-11 Brouards Industry

- 2200 2 5 *Hinchingham*

- 220 1 6 *Denbigh* Surveyed 13 April 1667 for John Floyd in Swan
Creek on the East side of Hywons Haven.

- 90 3 7 *Knave Stand off*

- 33 1 1 *Austinus Beginning* Surveyed for John Austin
September 26th 1756 Lying on the West side of Morgans Creek

- 27 1 11 *Stunney Fields* Surveyed 11 August 1720 for William
Ackland Lying in Kent County on the North side of Chester River.

- 300 12 1 *Ashlys Lot* Surveyed for Isaac Ashby the 16th April 1707
Beginning at a marked red Oak standing in the Woods of the South side
of the main Branch of Weston Creek Part. to Mess^{rs} Isaac Ashby Jun^r William
Ashby, Isaac Ashby Jun^r and John Ashby Jun^r the 29th Sept. 1715.

- 200 8 1 *Ashlys Green* Surveyed 20th May 1696 for William Clowson
Lying on a Branch of Weston Creek Beginning at a bounded Tree of Dutch Oak.

- 1000 1 1 *Cornwallis's Choice* Surveyed 16 August 1650 for Capt^m
Thomas Cornwallis on the East side of Swan Bay.

150 w 6 w *Carola* Surveyed 30th October 1692 for Charles James at a marked Oak at the End of the South West Line of Rob^t. Williams

50 " 2 " *Calib's Discovery* Surveyed for Calib Beck's 1st Oct. 1731 Beginning at a bounded Red Oak.

210 " 8.5 *Savory's Farm*

13 " " 6 1/2 *Locust Point* Surveyed 16 August 1711 for John March Lyngin North Creek Beginning at a bounded Poplar standing on the East side of a Creek

150 " 6 " *Budds Meadows* Surveyed for Samuel Budd the 31st July 1750 beginning at the End of twenty five poles South East from the Original Beginning Tree of a tract of land called *Winton* now belonging to Joshua Beck Pat^d. 26 August 1752.

295 " 11.10 *Budds Discovery*

105 " 2.2 *Wifes Choice*

200 " 8 " *Bounty* Surveyed 10th Oct. 1696 for Col^l. John Keymer Beginning at a bounded red Oak.

75 - 3 - Backs part of Bounty Resurveyed

100 - 1 - Backs Addition Surveyed 2^d July 1687 for John Keck lying on the South side the main Branch of White Creek.

150 - 6 - Pascoes Poor Sott

250 - 10 - Chance Surveyed for Thomas Tolley the 18th April 1705 lying on the North side of Chester River beginning at a bounded poplar standing in the West line of George Poppers land patented 25th July 1719

200 - 8 - Falmouth Surveyed 26th December 1671 for William Salobury in White Creek.

500 - 10 - Williams Town

200 - 8 - Pond Surveyed 1st May 1672 for Thomas Howell beginning at a marked Gum in a pond called the Great Pond running across the said Pond

182 - 19 - Bennetts Bridge Surveyed September 1706 for Richard Bennetts lying on the South side of Pascoes River beginning at a bounded white oak standing on a branch directly opposite to the mouth of the Horse Branch the Spring which Horse Branch joins upon a Tract of Land belonging to Whelpington called Springs and running from the White Oak South by the 340th Perch

1650	3	6	Mitchells Park
500	1	-	S ^t Antonia Surveyed 17 th Oct ^r 1681 for Ebenezer & Blachton by a branch running out of Parke Creek.
150	6	-	Probus
90	3	7	Longcomton Surveyed 20 August 1700 for Edward Koch near the Head of a branch of Weston Creek.
100	4	-	Beckworth Surveyed 18 th Oct ^r 1680 for Edward Koch on the south side the main branch of Weston Creek.
800	16	-	Larkins Addition Surveyed 2 ^d March 1668 for John Larkin in a paper river near the Head of S. River.
200	8	1	Beards Part of Morton
200	4	-	Broad Oak

[Faint, illegible handwritten notes and sketches on the right page, possibly bleed-through from the reverse side.]

102 " A 1 Green Forrest

200 " 0 " Wrights Rest at Heath's Chance
Surveyed 26th Oct. 1672 for Thomas Wright at the head of Fishing Creek granted
by the name of Heath's Chance.

338 " 12 6 1/2 Middle Neck

150 " 6 " Part of Adams Choice

150 " 5 " Partners Addition Surveyed 2th June 1672 for Rich^d
Borver and Francis Robinson on the West side of Swan Creek in Sassafras River

300 " 12 " Hangmans End Surveyed for John Rogers March 16
1720 Beginning at a Round red Oak standing at the End of the Coast and by South
Line of a Tract in the possession of Thomas Keyser.

561 " 15 3 Ryleys Land Resurveyed

500 1 " Childs Harbour at Hampshire
Surveyed 2^d Oct. 1672 for Francis Child in Ferry's Creek in Sassafras River

200 0 0 Blays Range Surveyed 11 September 1673 for Edward Blay beginning at the Head of Turners Creek on the South side of a spring known as marked highway and Pat. in London Oct. 13. 1701.

800 1 15 2 1/2 Blays Park

345 9 10 Rachells Farme

800 1 12 Rich Lovell Surveyed 16 November 1682 for Philip Holliger on the main branch of Sassafras River.

200 0 0 Forrest Surveyed 3 June 1695 for Philip Holliger on a branch near the Head of the river.

1350 2 15 1/2 Heaths Range 2. Part Surveyed 31 August 1701 for James Heath lying in Cecil County at the Head of Sassafras upon and on the South side the main branch thereof, beginning at a bounded black oak the same being the second bounded tree of a tract of Land Surveyed for Philip Holliger.

94 3 9 1/2 Boyers Adventure Surveyed for Simon Milner by Augustine Boyer the 17. February 1703 beginning at the end of 100 fathoms South West from a bounded black oak standing on the West side of the main Road leading from the Head of Sassafras to Duck Creek. Pat. 1. June 1704

595 1.3 Mill Fork

(100)

454 10.2 Philips Neglect Resurveyed

350 15.1 Priors Neglect Surveyed 23 September 1685 for Philip
Holliger on the south side of a spruce knob.

120 1.10 Bosticks Addition

112 1.6 Warners Addition Surveyed 11 August 1698 for George
Warner at the head of the main branch of Millstone Creek.

250 10.1 Essex

200 0.1 Richards Adventure Surveyed 1st April 1707 for
Thomas Gum being on the North side of the river beginning at a white oak standing
in a fork of the main branch of Morgan's Creek.

150 6.1 Barney's Forest Surveyed for Francis Barney December 17th
1719 beginning at a marked Spanish oak standing at the end of the South by West
Line of a tract called Essex.

500 1 1 Fancy Surveyed 21st June 1680 for William Cox lying on the North East Branch of Longfords Bay.

250 10 1 Grumble Surveyed for Thomas Bordley the 16th July 1720 lying near the Head of North East Branch of Longfords Bay beginning at the North end of a parcel of land called Ambrundell 17th Nov. Pat. 8th Oct. 1720.

750 1 10 Partnership Surveyed for Thomas Bordley the 21st May 1718 lying on the North side of Chester River and on the south of the River commonly called the North East and Mill Branch beginning at a Rounded poplar standing on the East side of the said Mill Branch. Pat. 8th May 1719.

28 1 1 1/2 Janico Surveyed 8th March 1722 for John Coomes beginning at the end of the West line of Broad Neck patented August 10th 1723.

525 1 1 Bordlys Gift

100 1 1 Jones's Neglect Surveyed for John Bordley 21st May 1751 beginning at the end of the first line of the Original Tract of Daniels Disappointment Pat. 16th December 1751.

137 5 6 Adventure Resurveyed

300 6 1 Rurden Surveyed 24th September 1608 for Robert Daughtry lying on the East side of Longfords Bay.

58 2 A Prices Lott Surveyed 22 February 1708 for John Price lying on the East side of Longfords Bay, beginning at a bounded white Oak standing by the said Bay side in the lands of Morgan known called Paries Trees.

100 2 B Trumpington Surveyed 22 September 1658 for Thomas South on the North side of Chester River.

60 2 C Smiths Meadows Surveyed 10 December 1703 for Thomas Smith lying on the North side of Chester River beginning at a marked Oak at the Mouth of a Creek called Smiths Creek.

300 6 D Boxley Surveyed 13 April 1667 for John Stoll near a Branch of Swan Creek called Symons Haven.

190 7 E Hazard

1000 1 F Thornton Surveyed 21 January 1662 for Francis Jackson lying on the East side of Morgans Creek Nat. in the name of Andrew Cook.

150 6 G Gleaves Lott Surveyed 25 May 1710 for George Gleaves beginning at a bounded white Oak standing on the North side of Swells Branch Nat. 10 August 1713.

300 12 H Mothers Gift Surveyed 6 August 1682 for Michael Miller lying on a point by the side of Runroughs Creek.

1500 3 w Arcadia Surveyed 18th May 1680 for Michael Miller lying on the West side of the Long Branch of Longfords Bay.

620 1. 5. 7. Outrange Surveyed 15 May 1705 for Robert Smith Esq. lying on the north side the head of Chester River on the north side the main Branch beginning at a Dogwood bounded Tree standing near the head of the said Branch

25 1 Addition to Kent Lott Surveyed for John Blackston the 1st June 1753 beginning at a bounded Dogwood Tree being the Original beginning of Kent Lott. Pat. 10 August 1750.

100 A Kent Lott Surveyed 23 February 1715 for Benjamin Coker beginning at a bounded Dogwood standing below the mouth of Andersons Branch being a bounded Tree of a Tract of Land said out for Robert Smith Pat. 10 September 1716.

500 1 Goose Haven Surveyed 10 August 1688 for William Kemmerly lying on the North side Chester River.

3000 6 Partnership Surveyed 16 August 1688 for John Swolin at the going over Chester River and pat. 16 Dec. 1688.

300 12 Fair Dealing Surveyed 1st September 1688 for John Butler lying on the north side Chester River.

1000 2 Ellis Chance Surveyed 20th May 1695 for John Ellis beginning at a red oak marked on the North East end with F.E.

110. ^{11Δ} 11 Tannfield Moore Surveyed 9th March 1736 for
Nicholas Smith.

200 0 Chignell Surveyed 21st November 1699 for Simon Millmore
Lying between Longford Bay and Chester New Beginning at a White Oak
at the End of the South Side of Kemps beginning.

213 2.7 Deans Adventure Surveyed 6th August 1689 for
William Dean Lying at the head of Swan Creek on the West side of the head
of the Beaver Dam Branch.

2A0 9.7 Edwins Addition Surveyed 6th August 1689 for William
Edwin Lying on the Eastern most side of Swan Creek.

11A Δ.7 Williams Venture

2A3 9.9 New Town Resurveyed

55 2.21 Cuckhold Point Surveyed 22nd May 1721 for Edward Coyens Lying on
a branch issuing out of Swan Creek called Wynsons Haven.

162 6.6 Bradshans Farm

100 - A - *Mixes Hazard* Surveyed 3^d Oct. 1718 for Royal Har
Lying on the North side the main branch of Chester River beginning at a
Round Oak standing on the South side of the Creek. Pat. 2^d
November 1725.

150 - C - *Reading* Surveyed November 8th 1702 for John Reading Lying
on the north of Chester River beginning at a Round Oak standing near the
head of a small Draught coming out of Munkle Run Branch

100 - A - *Elinors Delight* Surveyed 17th January 1713 for Matthew
Shaw Lying on a branch called Black Stallion Branch beginning at
a Round White Oak standing on the South side the Branch
Pat. 2^d Oct. 1702.

58 - 2A - *Addition to Good Hope* Surveyed for Francis
Kodden November 6th 1727 beginning at a Round Red Oak standing on the
Fork of Horns Bridge Branch.

238 - 9. 6. *Woolfs Huck* Surveyed for Francis Kodden November 7th 1727
beginning at a marked Red Oak standing near or at the End of the South East
Line of a tract called Thornton.

300 - 12 - *Good Hope* Surveyed 2^d December 1722 for William Comegys
Lying on the North side of Chester River. Pat. 16 Henry Augustine Kodden.

300 - 12 - *Sewards Hope* Surveyed 20th May 1686 for Thomas Seward Lying on
the main branch of Morgans Creek.

150 - C - *Ellis Industry* Surveyed 3^d Oct. 1718 for Benjamin Ellis
Lying on the head of Chester River on the North side of the main Branch
beginning at a Round Elm standing on a low point of the said
Branch Pat. 1st July 1723.

2255 A. N. 22 ¹¹⁶ The Deer Park, Surveyed for Benjamin Blackiston
the 19th February 1755 Beginning at the End of one hundred and forty perches
North seven degrees East from a bounded being the Beginning of a tract
of land called the Reserve belonging to the said Benjamin Pat. 16th March
1756.

07 - 3.6 Blackistons Lott Surveyed for Benjamin Blackiston
the 25th Day of Oct. 1755 Beginning at the Beginning of a large Tract of land
commonly called Sawthe Manor Pat. 1st December 1755.

090 A. 15. 7th Mount Herman

139 - 17.7 Peares Ramble Surveyed 20th July 1721 for Gideon Pearce
Lying on the South side of a road to the west.

11 - 5th Bryans Addition Surveyed for Daniel Bryan
the 23rd January 1753 Beginning at the End of Ten perches South from the End of
the West side of Angles Hill. Pat. 10 August 1753

900 A. 16. The Forrest Surveyed November 19th 1727 for Gideon Pearce.

168 - 6.9 Part Killingsnorthmore Enlarged

100 - A - Barton Surveyed 17th September 1706 for Edward Bech lying at the head of Water Creek and on the north side of a small island called Kuchunth beginning at a rounded red oak standing on the North side of Water Branch

210 - A - 7th Indian Range Resurveyed

900 - 1 - 10th Harris's Forrest Surveyed for James Harris Esq. 27th February 1720 lying on the West side of Schuler River on the Westmost branch of a creek called Fairy Creek beginning at a rounded oak standing near the said branch Oct. 10th May 1723.

50 - 2 - Johnsons Lott Surveyed 7th July 1720 for Gabriel Johnson lying on the Western side of pudding branch that flows out of the Cypress branch beginning at a marked white oak standing near the said branch Oct. 2nd May 1723

110 - 5 - 11th Widges Recovery

100 - 2 - Bairs Grim Surveyed 28th Oct. 1665 for John James lying on the head of Stillpoint Creek.

900 - 18 - Grange Surveyed 20th Janry 1671 for John James lying on Still point Creek

860 - 17 22 Partnership Point Resurveyed

12A - 5 11 Howards Lott Resurveyed

200 - A - Chance Surveyed in June 1696 for Darby Hely lying on the South side of a paper river.

200 - 0 - Chance

251 1/2 - 10 0 1/2 Providence Resurveyed

1203 1/2 - 0 1/2 Stratford Mannor

57 - 2 3/4 Popes Chance Surveyed for William Pope the 22nd Feb^{ry} 1742 beginning at a round red Oak standing on the South side of a branch near the head of the river called the meeting house spring Feb^{ry} 10th 1743.

182 7-31 Ellis's Farm

200 A Macoakin Surveyed 24th September 1658 for John Macoakin
Lying on the East side of Longfords Bay Old joining to the land of Nicholas
K. roadway.

100 A Lyons Hall Surveyed 2^d May 1687 for Thomas Wines lying on
the North side of Chester River.

300 12 The Ponds Surveyed 2^d November 1719 for Edward Mitchell lying
on the South side of Sapponee River beginning at a rounded white oak
standing at the head of a Branch called the Steving Run Pat. 11 Oct. 1722

1 Burks Lott

112A 1-11 Sewell at Ulrick Surveyed 16th June 1681 for Cornelius Comigge
beginning at a marked cedar near Sewell point and running up the River.

1000 2 Cony Warren Surveyed 22^d November 1672 for Vincent Collett
and John Mills in Weston Creek.

702 ¹⁹⁰ 16.1 *Howells and Howells Addition*

992 1. 19.8 *Salters Load Resurveyed*

177 7.1 *Carvilles Adventure*

100 16. *Poplar Farm* Surveyed 16th June 1602 for Elias King and William Harris lying on the south side poplar branch of Farloe Creek.

300 12. *Howards Gift* Surveyed 13th June 1602 for M^r. Scott at the head of Farloe Creek.

500 1. *Dallington* Surveyed 26th May 1600 for John Dallington lying on the north side of Chester River.

200 8. *Sewersterne* Surveyed Oct. 15th 1701 for Robert Fournant lying on the north side of Chester River beginning at a bounded red Oak standing by a small branch running out of the lowest branch of Magans Creek.

300 - 12 - *Viaven Resurveyed*

2900 5 16 - *Adventure* Surveyed for Richard Bennett Esq. May 22. 1722
beginning at a bounded red Oak standing in a small Nook on the Western
Side of the Cypress Branch of Chester River which said Branch falls down
to or near the head of S. Chester and about seventy perches below a place called
the going over to Cypress joins the said Oak being the beginning Tree of
a Tract of Land called Mitchells park Resurveyed and running thence South
Twenty Degrees West Sixty perches.

300 - 6 - *Blackhalls Hermitage* Surveyed 3 June 1670
for Ralph Blackhall on the north side of Chester near the river side.

140 - 5 7 - *Triangle* Surveyed 22 February 1720 for Philip Davis lying near a
branch issuing out of Sapsapas River beginning at a marked Hickory standing
in the South West line of a parcel of land called Dalman & Folly part. 2^d May
1728.

225 - 1 6 - *Fish Hall* Surveyed 14 May 1662 for William Fishers lying on
the South side of Sapsapas River.

350 - 7 - *Camells Farme* Surveyed 16 August 1672 for John Camell
lying near the head of Jacobs Creek at the Westmost bounds of Captain
Thomas Howell.

300 - 6 - *Howells Farme* Surveyed 25 June 1671 for Thomas Howell
lying at the head of Fishing Creek in Sapsapas River.

150 - 6 - Chandlers Addition Surveyed for Thomas
Chandler 2 June 1757. Beginning at a marked post standing at the end
of the south line of a Tract of land called Monken & being also the beginning
of a tract of land called Henham Pat. 20 July 1757.

275 - 5 - 6 Draycott Surveyed 16 May 1668 for Henry Jones lying on
the south side of a prairie river on the East bounds of Mills Fisher.

70 - 3 - Hanham Surveyed 10 March 1681 for Edward Sweatnam
lying on the south side of a prairie river.

30 - 1 - 6 Sweatnams Insula Surveyed 10 March 1681
for Edward Sweatnam lying on the south side of a prairie river beginning
at the first bounded / bounded Tree of Stone Town.

19 - 9 - Howards Chance Surveyed for Matthew Howard
the 29 March 1758 beginning at an old bounded red Oak being the beginning
Tree of a Tract of land called Howells Town Pat. 29 March 1758.

300 - 12 - Cock of the Game Surveyed 12 May 1678 for Thomas Payer
lying in a prairie.

107 - 3 - Dublin Resurveyed

400 - 10 - Forrsters Delight Surveyed 31 August 1696 for
Henry Inulock and Edward Trufsum on the North side of the prairie Creek.

156 - 6 - Dutches Folly Surveyed 15th Oct. 1682 for Hugh Dutch lying at the head of Stulpone Creek.

200 - 0 - St. Martins Surveyed 16th April 1682 for Nathl. Hillen at the head of Stulpone Creek.

52 - 2 - 1 Allibones Addition Surveyed September 28th 1706 for Edward Allibone lying at the head of a creek called Stulpone Creek beginning at a bounded white Oak standing on the south side of the North East Branch of the said creek being the west bounded Tree of a parcel of land called St. Martins

300 - 12 - Forrest of Dian Surveyed 15 September 1683 for Walter Hub lying at the head of the main branch of Church Creek.

500 1 - - Fork Surveyed 23 Oct. 1682 for Waugine known lying on the south side of the said creek.

500 1 - - Forrest Surveyed 9th November 1695 for Philip Holliger lying on the southernmost branch of Williams Creek in the said woods.

215 - 0 - 7 Lambs Meadons Surveyed 2 November 1692 for Peter Lamb lying in the Hunter Marsh

200 - 0 - Courneys Meadons Surveyed 23 February 1701 for James Courney beginning at a bounded white Oak of a parcel of land called Waterlago Farm standing on a branch side.

100 - A - *Greens Range* Surveyed 1st May 1687 for James Green lying near the head of Mich. Allapans Creek.

200 - B - *Heborns Farm* Surveyed 13 July 1683 for James Heborn near the head of the Cape Creek.

87 - 3.6 *Brotherly and Friendly Agreement* Surveyed for John Cowsey February 17th 1724 beginning at a bounded white Oak standing near the main road that leads by Thomas Medfords to George Warrers.

100 - A - *Stand off* Surveyed 28 Oct. 1700 for Alexander Clark lying on the south side the head of Cape of the river.

150 - 3 - *Prosberry* Surveyed 20 August 1675 for Thomas Norris lying on the West side of the Cape Creek.

15 - 7 1/2 *Littleworth* Surveyed 16 May 1689 for William Comegys lying on the West side of the Cape Creek.

1A - 5 1/2 *The Landing* Surveyed 10 November 1720 for Edward Comegys beginning at a bounded white Oak standing in an Old Field in the said Comegys Plantation.

127 - 5.1 *Chance Resurveyed*

700 1A Broad Neck Surveyed 12th December 1665 for John
Edmondson on the North side of the River in Edmondson Creek.

75 3 Friendship Surveyed 24th April 1712 for Michael Luckett
beginning at the head of the West Line of a Tract of land called Kings Neck
Pat. 15th July 1712.

800 16 Wickliffe Surveyed 22nd September 1658 for Joseph Wickliffe and
Thomas Hyson on the East side the Eastern bay called the Eastern Neck

300 6 The Markett Place Surveyed 23rd February 1662 for Thomas
Hyson.

150 6 Ringolds Fortune Surveyed 25th March 1665 for James
Ringold Syng on the North side situated at the head of a branch of the North
West branch of Longfords bay.

57 2 3rd Second Part of Ringolds Lott
Surveyed March 26th 1706 for Charles Ringold beginning at a Round Oak
standing on the West side of a branch belonging to Longfords bay called the
Church branch and in the North West Line of the said Ringolds land formerly
laid out for his father James Ringold.

1550 1A Great Oak Manner

100 ~ 16 ~ *Queen Carteton* Surveyed 13th June 1677 from Samuel Ivory lying on the West side the North East Branch of Longfords Bay.

350 ~ 14 ~ *Mount Pleasant* Surveyed 24th July 1678 for John Wedge lying on the East side the North East Branch of Longfords Bay.

200 ~ 8 ~ *Jamaica* Surveyed 27th July 1678 for Elliot Humphreys beginning at a marked Black towards the head and on the East side the Easternmost Branch of Longfords Bay.

50 ~ 2 ~ *Chedle* Surveyed 20th May 1680 for Michael Miller lying on the West Creek of Longfords Bay.

130 ~ 5 ~ 2^h *The Relief* Surveyed for Cornelius Comings the 2^d Day of May 1687. Pat. to M^{rs} Thomas Withins and John Clark the 16th June 1726

25 ~ 1 ~ *Clarks Addition* Surveyed 19th September 1716 for Dennis Clark beginning at a Round red Oak standing on the north side of Chester River. Pat. 25th April 1717.

50 ~ 2 ~ *Mackdougalls Chance* Surveyed for John M^r Dougall 16 January 1729 lying above the head of Chester River in said County pat. to said M^r Dougall 14th August 1732.

[Faint, illegible handwritten notes and sketches on the right page]

1200 2 0 ¹²⁷ Angels Rest Surveyed 21 June 1683 for Bryan Comely
Lying near the head of Sapsucker river in the Woods

300 12 Lords Gift Surveyed 13 Decem^r 1692 for John Symon
Lying between Gaby Inn Creek and Langfords Bay.

102 7 3/4 Williams Lott

101 3 8 Memento Mori

100 10 Conjunct Surveyed for Gideon Pearce 10 April 1730 Lying between
the heads of Chester and Duck Creek Branches part. 16th 1730 7 August 1732.

510 1 1 1/2 Chester Grove Surveyed June 19th 1705 for Sam^l Wallau and
William Comegys beginning at a Bounded red Oak being a Bounded Tree of a
Tract of land called Endeavour laid out for William Comegys standing on the
West side of a Branch called the Dogue Branch and on the north side of Chester

27 1 1 Hackney Surveyed for Charles Garford Novemb^r 5th 1710 beginning
at a Bounded White Oak standing on the East side of the Dogue Branch.

1200 2 0 ¹⁹⁷ Angels Rest Surveyed 21 June 1683 for Bryan Comely
Lying near the head of Sappan river in the Woods

300 12 Lords Gift Surveyed 13 Decem^r 1692 for John Symon
Lying between Gray Inn Creek and Langfords Bay.

182 7 3/4 Williams Lott

182 3 8 Memento Mori

100 16 Conjunct Surveyed for Gideon Pearce 10 April 1730 Lying between
the heads of Chester and Duck Creek Branches part. 16th Pearce 7 August 1732.

520 1 1 1/2 Chester Grove Surveyed June 19th 1705 for Sam^l Wallau and
William Comegys beginning at a bounded red Oak being a bounded tree of a
Tract of land called Endeavour laid out for William Comegys standing on the
West side of a Branch called the Dogue Branch and on the north side of Chester

27 1 1 Hackney Surveyed for Charles Gifford Novemb^r 5th 1718 beginning
at a bounded White Oak standing on the East side of the Dogue Branch.

[Faint, illegible handwritten text on the right page]

70 ~ 2-10 ¹⁷²⁸ *The Handle* Surveyed for Cornelius Comegys 10th Sept
1728 Beginning at a small white Oak standing on a branch issuing out of
the Doge branch Pat. 29th September 1728.

25 ~ 1-1 *The Meadows* Surveyed for Cornelius Comegys 10th May
1728 Beginning at a Spanish Oak being the bounded Tree of a Tract of Land
said out for M^r Gideon Plaine called the Forest standing on the West side of
a branch called the *Branch* and on the lower end of the mouth of a
branch called the *Bear* branch which issues out of the *Left* branch
Pat. 10th May 1728.

20 ~ 0-10 *Scrap* Surveyed for Cornelius Comegys 2nd September 1756
Beginning at a marked white Oak being the South East Corner of a Tract of Land
called *Channel* Pat. 2nd September 1756.

100 ~ Δ-1 *Exchange* Surveyed November 10th 1706 for Walter Nash being
on the North side of Chester River beginning at a bounded bush standing near
the head of Morgan's Creek Branch.

107 ~ Δ-3 1/2 *Crows Addition* Surveyed for William Crow February 18th
1725 Beginning at two bounded Maple Trees standing in the Corner of a swamp

323 ~ 13-9 *Middle Plantation*

510 ~ 1-0 *Commegys Farm Addition*

600 1. A

High Park

100 A

Crows Chance

Surveyed the 2^d August 1718 for William Cross
Lying on the North side of Chester between the North East and North West
branches of Langfords bay, beginning at a rounded poplar being the first bounded
Tree of a tract of land called Middle plantation. Pat. 20th July 1722.

1050 1. 10

Langfords Nick Resurveyed

170 12. 10

Coopers Folly

100 A

Jones's Venture

Surveyed the 20th December 1718 for William Jones
Lying on a branch called Cypress branch, beginning at a rounded white Oak standing
on the East side of said branch pat. 10 September 1723.

350 11

The Adventure

Surveyed for William Crane the 25th Day of January
1726 beginning at the end of one hundred fathoms North seventy two Degrees West
from a rounded White Oak standing near the Duck Creek path by a white oak near the
head of the Luring branch being the beginning Tree of Middle plantation Pat. 26th
February 1729.

100 - A -

Partnership Surveyed 27th Day of January 1732 for Maurice Cloak Beginning at a rounded red Oak standing on the side of a hill near the end of the second line of the land called new Holland Pat. 19 August 1710.

31 - 1 - 3

Cloaks Addition Surveyed 26 Oct. 1753 Beginning at the third line of a tract of land called Kings Addition at the end of front of fence on that line Pat. 31 March 1755.

333 - 13 - 1

Buck Hill & Billys Lott Resurveyed

440 - 17 - 7 1/2

Forrest Surveyed Oct. 15. 1705 for Robert Smith and by him assigned to Solomon Wright lying on the North side of Chester River Beginning at a rounded red Oak standing at the end of the front line of a tract of land called Norritt on the East side of a branch called prickle pear Branch.

500 - 1 -

Chance Surveyed 20th September 1683 for James Sedgwick lying on the North Side of Chester River.

3 - 11 -

Townside Surveyed for Foster Sunlife of Liver pool Merchant 2 April 1727 Beginning at a rounded stone marked M^r lying near M^r William Conroy's his landing and being the beginning of Buck Hills & Billys Lott. Pat. 1st Nov. 1727

100 - A -

Spalden Surveyed 15 December 1710 for Andrew Spalden Beginning at a white Oak standing at the end of the North West end by West line of a tract of land called Green Bank Pat. 10 August 1713.

1120 2. 10

Canada Surveyed for M^{rs}. Samuel Mafay John Howard & William Crane
the 15 Day of June 1747 Beginning at the end of the Hundred paces North West
from a bounded black oak extending close by the Schappel New Road and on the South
West by South line of a Tract of land called Collier's Chance & being the beginning Tract
of a Tract of land taken up by Capt. Jacob Jones called Ashkibony Ridge. Nat. 15
June 1747.

9

M. Jerman Point Surveyed 15 Day of Oct. 1743 for Samuel Mafay
Beginning at a bar of a point on the West side of Turners Creek above the Landing
Nat. 17. Oct. 1743.

7

Knocks Tolly Surveyed for John Redgrave 23 February 1758
Beginning at a bounded black oak standing on the West side of a Creek called Turners
Creek and on the Narrows of a point called Piney point and on that point where the bounded
Tract of a Tract of land called Remelle's Hope stood. Nat. 16 Thomas Croody the 23
April 1758.

60

2. 5 Fairfield Surveyed for William Comings July 11. 1720 Lying on a Branch
of Chester River called Apper Branch part of John Cole's

150

Piney Point Resurveyed

100

2 The Cove Tract Surveyed 2 December 1682 for Nath. Stiles
Lying on the East side of the same Creek

70

2. 10 The Cove Surveyed 20 May 1672 for Thomas Howell Lying on the North
side of the same Creek at the mouth of the said Creek

700 1 12 Dale Town Surveyed 3rd May 1667 for Capt. Thomas Howell
Lying on the South side of the James River at the mouth of the River.

600 1 12 Fair Promise Surveyed 3rd May 1667 for Capt. Robert
Lying on the South side of the James River a little within the River.

1000 1 12 Verina Surveyed 21st August 1638 for Capt. Thomas
Lying on the South side of the James River.

231 1 9 Partnership Surveyed for John Tilden by Wm or Rachel Womwe
Widow and Isabella Blay Oct^r 26. 1730 Beginning at a Rounded Log and post being
the first Rounder of part called Dale Town.

300 1 12 Dullians Tolly Surveyed 1st December 1682 for Philip
Davis Lying near the Mill Branch.

1015 2 1 9 Angels Lott Resurveyed

200 ~ 8 ~ Nancy's Fancy Surveyed Oct. 1683 for Nathl. Hillen lying
in Helponesick Now called Middle Neck.

600 ~ 1 ~ Δ ~ Hillens Adventure Surveyed in December 1680 for
Nathl. Hillen lying at the head of Helpones.

300 ~ 12 ~ Hangmans Jolly Surveyed in December 1682 for William
Pearce lying on the West side of Swan Creek in the papers.

300 ~ 6 ~ The Fork Surveyed 8 July 1687 for Henry Hawkins lying on the North
Side of Chester River.

500 ~ 10 ~ Broadnox Surveyed for Thomas Broadnox lying on the West
Side of Chester River near Broadnox Creek.

92 1/2 ~ 3 ~ Δ ~ Adventure Surveyed for Nathl. Covert lying
in Langfords Bay near the head of Chester River.

27 ~ 1 ~ 1 ~ Mackeys Desire Surveyed 17th November 1711 for William
M'Key beginning at a marked hickory standing by the main Road side
Part. 16 August 1716.

100 ~ 2 ~ Chance Surveyed 18 August 1665 for John Mitchell lying on the
East side of Grays Inn Neck.

100 - 2 - *Hynsons Chance* Surveyed 7th August 1605
for Thomas Hynson dying on the East side of Gage's Inn Creek.

27 - 1 - 1 *Addition* Surveyed for John Stuffs the 10th Oct. 1727 dying on
the North side of Chester River and on a creek in the same River called
Graves End Creek beginning at a Survey post.

600 - 12 - *Hopewell* Surveyed 2^d January 1668 for John Woodchurch
dying on the north side of Chester on the West side of Gage's Creek.

900 - 18 - *Filghmans Farm* Surveyed 21st September 1668
for Richard Filghman beginning at a marked Chestnut Tree dying near
Chester and running into the Woods.

300 - 12 - *Kemps Beginning* Surveyed 22nd September 1687 for
Simon Kimmore dying on Middle Creek.

290 - 11 - 10th *Ratcliff* Surveyed June 10th 1705 for Samuel Madaw & Will^m Rogers
dying on the North side of Chester River beginning at a bounded white Oak
standing on the North West Corner of a Tract of Land belonging to Robert Smith

200 - 8 - *Hurts Lott* Surveyed for John Hurst June 10th 1721 Beginning at
a bounded white Oak standing by the mouth of a Valley by a Marsh side.

250 - 10 - *The Addition to the Mathias and
St. Johns Fields* Surveyed for Mathias Day 7th November 1730
Pat. to say Day. 1st August 1732.

100 - Δ - ¹³⁵ *The Mathias* Surveyed for *Mathias Day* the 1st March
1717 Lying on the South side of *St. Pauls River* beginning at a bounded white Oak
standing by the side of a small Valley past. 6 August 1719.

955 1.0.2 *Colchester*

366 - 7.Δ *Duncans part of Worths Folly*

3A - 1. N *The Harbour* Surveyed for *William M'Clain* the 1st March 1726
beginning at the End of one hundred and Twenty six piches West from the
beginning Tree of Town Relief Pat. 2nd Oct. 1717.

6920 13.16.10 *The Remains of his Lordships
Gracious Grant*

100 - Δ -

Mary's Surveyed 27th May 1715 for Benjamin Ellis
beginning at a marked white oak standing on the North side of the main
branch of the head of Chester River Pat. 10 August 1716.

150 - b -

North Andover Surveyed 23 Oct. 1718 for Benjamin
Ellis lying on the north side the main branch of Chester River Pat. 16
William Ellis.

500 1 -

Williams Venture Surveyed 3 February 1734 for
William Ellis lying between the Sand called Brothers Land and Ellis's
Channel.

20 - 2 -

Mackeys Chance Surveyed 10 November 1737 for
Gideon Mackey lying on the South side of the main River.

222 - d. 11

Everetts Double Purchase

10 - 1th

The Rich Meadow Surveyed for Joseph Garnett the
23 July 1743 beginning at the end of ten perches on the North West Corn of a
Tract of Land called Everetts Double purchase Pat. 10 November 1740.

550 - 11 - Tibballs Surveyed 7th June 1668 for Philip Hollings lying on the South side of Sassafras river.

500 - 1 - Broad Oak Surveyed 13th February 1673 for Philip Hollings lying in broad Creek in Sassafras River.

120 - 5th - Timber Swell Surveyed for William Comgys and Samuel Wallau August 11th 1719 lying on the North of the head of a branch called Rich's peak branch partent for William Comgys and Margt. Hunt.

60 - 6 - By Chance Surveyed 29th September 1738 for John Pedgraves

31 - 1 - Peters Forrest Surveyed 10th March 1739 for Peter Cook.

31 - 1 - Chance Surveyed 12th April 1742 for Thomas Keynson beginning at a bounded white Oak being formerly marked with the letter M & Deamed to stand at the end of the first line of his Lordships manor. Oct 20 July 1743.

335 - 6 - Marshey Point

550 - 11

Tibballs Surveyed 7th June 1668 for Philip Hollings lying on the south side of Sapafras river.

500 - 1

Broad Oak Surveyed 13th February 1673 for Philip Hollings lying in broad Creek in Sapafras River.

120 - 5

Timber Lowell Surveyed for William Comings and Samuel Wallaw August 11th 1719 lying on the North of the head of a branch called Ruckle Peak branch patented for William Comings and Margt. Hunt.

60 - 6

By Chance Surveyed 29th September 1738 for John Redgrave

31 - 1

Peters Forrest Surveyed 10th March 1739 for Peter Cook.

31 - 1

Chance Surveyed 12th April 1742 for Thomas Keyson beginning at a bounded white Oak being formerly marked with the letter M & Diamed to stand at the end of the first line of his land shipped manor Oct 20 July 1743.

335 - 6

Marshy Point

158
40 1.5 Jones Part of Broad Oak

46 1.10 Addition to Timber Lovell Surveyed for
John Ludgrave the 31st Day of March 1752 beginning at a Round edged Oak
being the beginning of a parcel of land called Timber Lovell Pat. 16th June
1755. the 9th April 1755.

21 1 1 Fremans Addition Surveyed for Isaac Freman
the 20th May 1752 lying and being between a tract of land called Oruna
and Sappaas River beginning at the beginning of Oruna Pat. 20th Sept.
1752.

65 2.5 Chance Surveyed 2nd June 1682 for John Winsor lying in a small
Branch of Fishing Creek.

86 2.5 Fords part of Broomfield Resurveyed

600 1.1 A Hembury Surveyed 12th May 1681 for Humphrey Davenport lying on
the North side of the River at the head of the S. River

18 1.9 Swan Island Surveyed 1st August 1686 for William Frisby
lying at the mouth of Tavern Creek.

1000 1. 3. 22 ⁽¹³⁹⁾ Thomas Purchase *Granted unto William & Henry Thomas the 10th March 1750 Beginning at a marked pine Tree upon a point near above.*

111 1. 1. 7 Burkhwith its Addition Resurveyed

22 1. 1. 51 Frenches Lott *Surveyed for Louisa French the 29th August 1756 Beginning at a rounded white Oak being the Beginning Tree of a Tract of Land called Burkes Pat. 10th Novemb. 1747.*

300 1. 1. 12 Margarets End *Surveyed for John Mills for August 10th 1791 lying on the South side of a passage River*

231 1. 1. 112 Jobins Folly *Surveyed for Richard Jobin the 27th February 1752 Beginning at a gum Tree standing on the East side of a Stream near the North West Corner of Partnership between Thomas Newcomb and Rich. Mills for Plantation Pat. to George William Foxwater the 17th November 1752.*

35 1. 1. 5 Falconars Lott *Surveyed for John Falconar the 11th Day of Decem. 1752 Beginning at the Beginning Tree of a Tract of Land called of leave & doll. Pat. 12th Decem. 1751.*

50 1. 1. 2 Hazard *Surveyed for Louisa French the 26th Oct. 1725 Beginning at a rounded Spanish Oak standing on the West side of a Branch called the Dead Branch about an hundred paces above the Old Duck Creek North West to Sam. French the 9th April 1752.*

1000 ¹²⁰ 1st - Batchelors Resolution Surveyed 22 January
1668 for Matthew Major and Henry Sturmer lying on the South side
of the Charter River above the Dwelling on the West side of Margarets
Creek.

300 12 - Providence

733 17th 8 Greshams Colledge

105 16th 2nd Stiles Addition corrected

200 8 - Hudlers Right Surveyed 18 September 1678 for William
Huddle lying by the side of a piece of the Easternmost Bound of William
Telford's land.

100 A - Rushmore Surveyed 1st Decemb^r 1682 for Robt. Newes
lying near the head of Savin Creek.

200 - A - ¹⁰¹ Doe Neck Surveyed 25th Oct. 1672 for Isaac Pinner and John Powell lying on the North side of Fordall Creek

100 - A - The Hill Top Surveyed 30th November 1681 for George Higginbotham lying at the head of Winton on the South side of Cabin Branch.

294 - 11.9 Graves's part of Coney Warren

90 - 3.7^{1/2} Prince William Surveyed for William Graves 12th March 1715 beginning at the End of the East South East line of a Tract of land in possession of the same William, called Buck Neck Pat. 21st December.

193 - 9.10 Buck Neck

200 - 8 - Staples Choice Surveyed 9th August 1682 for Henry Staples lying on the South side of Fordal Creek.

300 - 12 - Hereford Surveyed 5th November 1683 for Richard & Joseph Hewell beginning at a marked Oak standing on the South side of a branch of Fordal's Creek Pat. 10 August 1682.

370 - 12.10 ¹²² Gamballs Farm

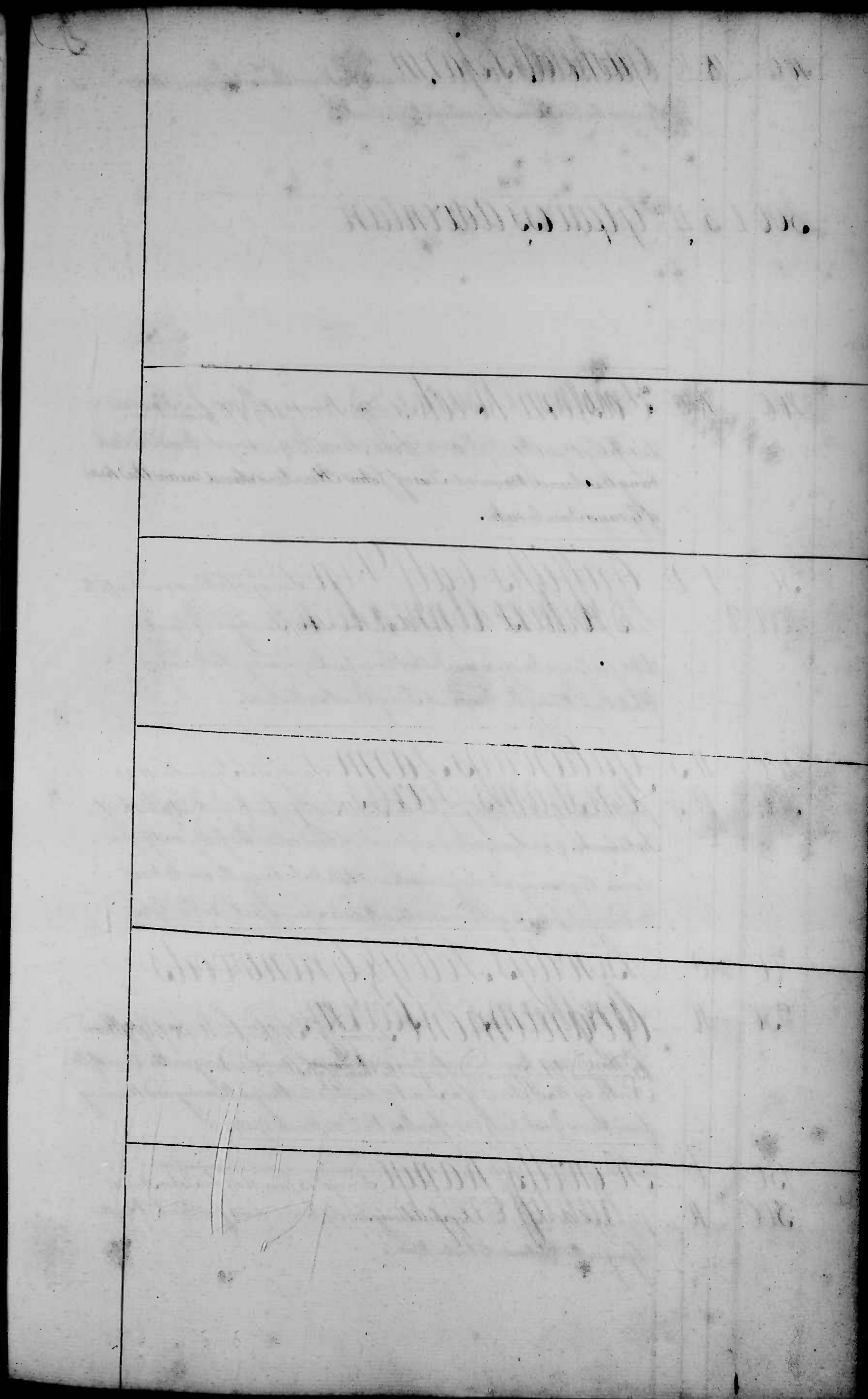
200 - 1 - Eastern Neck Surveyed 2^d Oct. 1692 for Cesar Prince and John Powell lying on the North side of Fendalls Creek.

30 - 1.2^{1/2} Griffiths Calf Pen Surveyed for Benjamin Griffiths 22 August 1730. Pat. to said Griffiths 4th November 1732

200 - 11.5 Galloways Farm Surveyed 5th September 1698 for William Galloway lying on the South side of Poplar Branch a Branch of Fals Creek.

200 - 8 - Bondys Folly & Greenwoods Avancement Surveyed 1st September 1698 for Richard Bondy and John Greenwood lying at the Head of Freshing Creek.

150 - 6 - Howells Range Surveyed 15 June 1681 for John Howell lying to the land called hopefull plenty.



100 ⁽¹¹³⁾ A - Cuckolds hope Surveyed for Roger Howard 29 April 1687
Lying on the Eastmost branch of Fells Creek.

500 1 3 21 Gleaves Adventure
Surveyed for Robert Gleaves 1703
Lying on the East side of Fells Creek
beginning at a bounded oak being the bound
of John Hunters land near the head
of Grays Inn Creek.

260 10 5 Smiths Desert Surveyed February 20 1703 for Thomas
Smith lying on the North side of Chester River beginning at a bounded oak
being the bound of Isaac John Hunters land near the head
of Grays Inn Creek.

1000 2 - Brothers Annexation Surveyed 29 April
1682 for George Burgess in Talbot County beginning at a bounded
White Oak being the bounded Tree of Currier Marmor.

306 12 3 Greshams Swells Surveyed for Richard Gresham
2 November 1743 lying between a parcel of land called the folly and fogue
lands beginning at a large marked White Oak being the south East
boundary of a parcel of land called the Middle Spring part 21 Nov 1743

250 10 - Greshams Discovery Surveyed for Richard Gresham
7th March 1745 beginning at a bounded lowest post standing on the end of the
North by West line of a Tract of land called Wedges Memory and running
from thence East by four posts part 11 March 1745.

500 10 - Ratcliff Cross Surveyed 15 September 1659 for Mark Parfax
Lying on the West side of Chester River.

85 ~ 35 The Northern Part of Stralford Manor

100 ~ A ~ Wynsons Choice Surveyed 3 Oct. 1680 for Anne
Hanson lying on the North side of Langfords Bay.

50 ~ 2 ~ Clifton Surveyed 7 April 1677 for William Kebleman lying near the head
of Swan Creek beginning at a marked Oak in a Swamp.

200 ~ A ~ Fair Harbour Surveyed 8 July 1667 for Nathl. Scott
Lying on the Western side of Langfords Bay.

109 ~ A ~ Addition to Luun Catherine & Co
Cartleton Surveyed for Thomas Mahon and Daniel Fenell 12 February
1730 Lying near the Mouth of Langfords Bay part. to said
Fenell 10 Oct. 1732.

250 ~ 10 ~ Standford Surveyed 6 June 1677 for William Key lying on the East
side the East Branch of Langfords Bay.

105
 10 ~ 1 ~ 7th *Saddlers Lott* Surveyed 18th May 1723 for Joseph Garnett
 Beginning at a bounded Red Oak standing at the End of the Northwest
 Line of the Jolly flat. 25th November 1723.

23 ~ 11th *Garnetts Branch* Surveyed for Joseph Garnett
 the 19th May 1723 beginning at the End of the branch which North from
 the beginning Tree of Kelly Langford Plat. 25th November 1727.

50 ~ 2 ~ *Spring Garden* Surveyed for Benjamin Griffiths
 27th July 1738 Plat. Howard Griffiths 23rd Oct. 1732.

69 ~ 2 ~ 9 *Grants Folly*

300 ~ 12 ~ *Redmonds Supply*

300 ~ 12 ~ *Intermix* Surveyed 28 February 1702 for Humphrey Stillson lying
 at the head of a creek called Stephens Creek beginning at a bounded Red Oak
 standing on the Easternmost side of a branch of the said Creek Plat. 7th August
 1706.

207 ~ 8 ~ 31 *The Resurvey of the Tryangle*

7A2 1. Q. 8th Suffolk Surveyed 3rd March 1681 for James Havelly lying on the South side of a narrow way at the head of Remell's Creek.

120 " A. 10th Greenwood part of Suffolk

128 " 17. 12th Georges part of Morton

17A " 7th Fortune Surveyed for John Garland and John Cloak 22nd May 1751 Beginning at a bounded Oak standing on the North side of the Chapple Road and in the line of Collins's Chanse being the beginning of a Tract of Land taken up by Jacob Jones called Shuckle Novey Ridge Oct. 13th March 1751.

200 " 8th Clayton Surveyed 9th September 1706 for Luke nor Middleton lying at the head of the pine Creek Beginning at a bounded Red Oak being the East most bounded Tree of a parcel of Land called Booy's Folly and Greenwood Advancement.

100 " 2nd Coventry Surveyed 2nd August 1659 for Jonathan Coventry joining to the Land of Captain Thomas Howell.

200 " A. Hills Down Surveyed 2nd August 1659 for William Hills joining to the Land of Jonathan Coventry.

1900 3.16 Fair Lu Surveyed May 16 1712 for James Harris lying on the Mouth of Fendalls Creek.

55A 1.2.2 The Swamp Resurveyed

100 6.0 Harris's Addition

20A 11.1 Millford

52 1/2 2.11/2 Frenchards Memorial Surveyed 8th April 1712 for Matthias Harris beginning at a rounded Spanish standing at the End of the North Line of a Tract of Land called Jamaica West 10 Sept 1712.

100 16 Long Neglect Surveyed for James Harris beg 10 Feb 1720 lying on the Western side of Chester River beginning at a marked Oak standing on the said River side West 10 August 1723.

1052 2.2.1 Hosiers Farm

520 10.9. Tolchester

300 6 Georges Town Surveyed September 1659 for George Goldsmith lying in the pines woods.

97 3.11 Howards Pollicey Surveyed for Matthew Howard 9th May 1727 Pat. to said Howard 26th July 1732.

6 3 Medfords Mistake Surveyed for Matthew Howard 29th March 1722 beginning at a large Spanish Oak bounded standing near the West line of Stephens house Pat. 29th March 1722.

570 1.2.10 Howards Adventure

100

Δ

⁽¹²⁹⁾
Luck th Surveyed 20 April 1677 for James Habourn dying at the head
of Fishing Creek.

1200

Δ

Drayton

513

Part of Drayton

305

12.12

Stavelys Lott th Surveyed for James Staveloy 3 April 1730
pat. to Staveloy 26 July 1732.

250

10

Castle Cary th Surveyed 2 June 1671 for Thomas Gebony
and Peter Meech in Persons Creek.

10

5

Hicks Addition th Surveyed 26 February 1752
for John Hicks lying between Howells Adventure and Campbells Farm
beginning at the beginning of Howells Adventure.

200 - 0 - The Marshes Surveyed 11 September 1670 for Richard Lake
Lying at the head of Fishing Creek.

250 - 10 - Smiths Park Surveyed 2 December 1682 for Thomas
Smith beginning at a marked hickory Great bounds of Philip Davis called
Weldons Folly.

200 - 0 - Scotts Folly Surveyed 10 September 1707 for James King and
William Johnson lying on the South side of Saprasas River beginning at
a Round red Oak standing on a Mound on the East side of a Road leading
to a Town in Co. County called Shrewsbury on the Saprasas River and on the
South side the Mill Branch of a Creek called Taylors Creek and near the
head of this Branch.

100 - Δ - Sampsons Addition Surveyed 28 August 1713 for
William Sampson lying on the South side of Saprasas and on the West side of
Island Creek to a marked beginning at a marked white Oak Mat 13 December
1718.

36 - 1 - 5/2 Hynsons Adventure Surveyed for Thomas Hynson
3 December 1730 Pat. to said Hynson 23 December 1732.

20 - 10 - Addition Surveyed 12 April 1722 for Thomas Hynson beginning
at a Round red Oak standing at the End of the North by West line of a parcel
of Land called Daves Addition Pat. 16 September 1723

150 ⁽¹⁵¹⁾ 3 *Down Dale* Surveyed 4th May 1672 for Thomas Dale
Lying at the head of Latham Creek.

150 6 *Hulls part of Suffolk*

200 A *Broomfield* Surveyed 4th May 1667 for John Broomfield
and Nicholas Allome Lying on the south side of a pease river on the East
side of Bunk Creek.

510 1. 5 *Adventure* Surveyed 1st June 1683 for Bryan Amaly Lying at
the head of Millsons Creek adjoining to Edward Jones Land.

12 1. 8 *Snow Hill* Surveyed for Edward Harris 2nd April 1730
Pat. to said Harris 6 April 1732.

70 6. 10 *Mill Hill* Surveyed for Thomas Harris 23 July 1752
Beginning at a rounded white Oak being the Original beginning Tree of the
Lifesaid Tract of Western Hole, taking in a Hill at the point of a
fork of the main Branch of Millson Creek and on the South side of the Mill
Wood and being about South four Degrees West from the Mill House by
Distant about fifty two paces. Pat. 11 August 1753.

350 w 11 w *S. Andrews Cross* Surveyed 10th November 1683 for
Captain William Rivers lying on the South side of the former River.

1000 2 2 *Margaretts Delight* Surveyed 17th Oct. 1702
for Thomas Sackings beginning at the North end of the North line
of a tract of land laid out for Col. Rich^d. Smith called the first part
of Freshiff.

200 w 8 w *Jerico* Surveyed 22nd September for John Salter lying in
Downs branch.

13 w 1 9 *Christophers Beginning* Surveyed for
Christopher Hall 10th February 1729 Pat. 6 said Hall 15 July 1732

300 w 12 w *Popes Forrest* Surveyed 1st June 1687 for Matthew Popes
lying on the Northernmost branch of Wicket Creek.

31 w 1 3 *Bavaria* Surveyed for Charles Symson 13 June 1701 Pat. 6
to S. Symson 5 August 1702

100 w 2 w *Walnut Beck* Surveyed for the new Sherrin lying on
the North side of the river on the East side of Grays Inkeruck 21 Aug^r
1665.

100 0 0 Woodland Neck Surveyed 18 July 1667 for
Whitman Lays lying in the North West Branch of Longfords Bay.

100 2 0 Hart Point Surveyed 26 February 1662 for Thomas
Hynsonson. Lying between Hynsonsons Haven and back creek.

200 0 0 Remainder Surveyed for William Comerys March 1675
beginning at a bounded red oak standing on the South side of the head
of Wards back branch.

100 2 0 Hansford Surveyed 4 July 1672 for James Hansford lying on
the South side of Hansford creek.

50 2 0 Hatchberry Surveyed for Philip & Joseph
Covett lying on the East side of the North East branch of Longfords
Bay.

500 10 0 Standaway Surveyed 8 August 1666 for Wm. Smith
lying on the North West Branch of Longfords Bay.

190 7 0 Hutchison's part of Killingsworth-
more

15 1-10 ^{15A} Hatchijons Addition Surveyed 21 April 1723
for Vincent Hatchijon beginning at a small bounded white lake standing at
at the end of the South Line of the land called Standaway. Pat. 12 Sept.
1723.

1000 1-11 Stephen Heath Mannor Surveyed 16
September 1659 for Samuel Spurr for lying on the West side of Chester
on the North side of Broad near Creek.

600 1-12 Prevention of Inconvenience
Surveyed for James Kingold. (not in when)

15 1-10 Hurts Direction Surveyed 11 July 1726 for Morgan
Hurt lying on the West side of Chester River.

200 1-8 Poplar Hill Surveyed 28 June 1680 for William Stennis
lying on the main branch of the North West Creek in Langfords Bay.

125 1-17 Holy Land Surveyed 18 June 1689 for William Stennis
lying in Langfords Bay at the head of Dumms Creek.

876 1-16 Hymsons Division

180 - 7. 2^h Addition Surveyed 11th December 1713 for John Symson and Patented to his son John Symson lying on the North side of Cheston river beginning at a marked oak & ending on a point called Elk point in the Cheston neck Pat. 9th September 1713.

200 - 8 - Hacketts Fancy Surveyed 10th December 1710 for Michael Hackett lying over the branch of a Creek called Fairy Creek beginning at a bounded hickory being the second bounded Tree of a Fall of land called Comleys former.

130 - 1. 9. 2^h Chance Surveyed 15th January 1729 for Gideon Pearce.

38 - 1. 10^h The Four Brothers

22 - 11 Bristoll Surveyed 16th February 1712 for Daniel Cooley beginning at a marked cedar post being the Westmost bound of a tract called Mulberry plains Pat. 10th September 1716.

100 - 2. 5 Browns Purchase Surveyed 18th Sept. 1716 for Will. Brown beginning at a marked oak being the North West Corner Tree of high Peak Pat. 25th April 1717.

118 Δ Δ **Mulberry Plain** Surveyed for William Brown
May 1. 1730 Beginning at a marked post standing on the South side
of a Cove called Hills Cove.

192 Δ Δ **Green Oak**

28 Δ Δ **Hayzells Adventure** Surveyed for Benjamin
Hayzell the 16th Oct. 1745 Beginning at a bounded white Oak standing at
the end of the first line of Williams Venture. Pat. 15 March 1748

100 Δ Δ **Burrans Addition** Surveyed for William Jones
April 25. 1730 Beginning at a bounded white Oak standing near the Northth Corner
of Ellis's Chances.

200 Δ Δ **Majors Venture** Surveyed for Peter Nicholas Major
the 7th March 1717 Lying on the North side of Chester Woods and on the South West
Side of a Branch called the Cypress Branch Beginning at a White Oak
Pat. 6 August 1719.

200 Δ Δ **Green Bank** Surveyed 29th February 1723 for Isaac Bonds
Lying on the South side of Chester Woods beginning at a bounded Spanish Oak
standing the West side of one of the Middle Branches of Fairy Creek
Pat. 10 January 1725

896 1. 11. 10 Thomas Hynsons Land Resurveyed.

222 2. 11 Hynsons desire Surveyed for Thomas Hynson the 10th November 1727 Beginning at a bounded white Oak standing near the head of a valley which descends to a branch of Soland Creek and on the Eastern side of a Creek Pat. 10th November 1727.

55 2. 21 Morris's Desire Resurveyed

9 2. 21 Hamblins Lott Surveyed for William Hamblin the 29th Day of May 1752 Beginning at a post standing on a point in a place of the third boundaries on the Original Survey of Orange and the Beginning of a parcel of Land lately surveyed for John Brown called Mills Point Patented 5th November 1752.

80 3. 21 Batchelors Choice Surveyed 7th July 1687 for Sutton Lying between the branches of Waton & Farlock Creeks.

20 10 Bridge Point Surveyed 17th July 1683 for Nicholas Boddy for Lying on the South side of a grass river.

250 ~ 10 ~ *New Forrest* Surveyed 20th Oct: 1683 for *Samuel Conroy* and *Nathl. Coote* lying on the West side of *Langford's Bay*.

150 ~ 6 ~ *Addition* Surveyed 12th September 1688 for *William Harris* joining on the *New Forrest*.

100 ~ 10 ~ *Philips Choice* Surveyed 10 November 1688 for *Philip Holliger* lying at the head of *Island Creek*.

100 ~ 1 ~ *Wetherills hope* Surveyed 6 May 1687 for *Saml. Wetherill* lying at the head of one of the branches of *Morgan's Creek*.

300 ~ 12 ~ *Bradfield* Surveyed 29th September 1688 for *Thomas Bradfield* lying on the North side of *Chester River* lying on the North side of *Langford's Bay*.

300 ~ 12 ~ *Batmans Farm* Surveyed 20th March 1702 for *William Bateman* lying on the North side of *Chester River* beginning at a rounded white oak the uppermost rounded Tree of a Tract of land called *Shanton* and standing on the side of a branch called *home's bridge* branch coming out of *Morgan's Creek*.

151 ~ 6 ~ *Ambrosia*

70 3 1/2 Thornton's Addition Surveyed 23 June 1727 for John Johnson Esq. and patented to John Johnson his son lying on the North side of Chester River.

360 1 1/2 Forrest Resurveyed

100 1 1/2 Darnalls Farm Surveyed 15 August 1683 for John Darnall Esq. Beginning at a marked Oak standing on the West side of Mards Creek.

100 1 Jones's Addition Surveyed 27 January 1731 for Thomas Jones.

36 1 5/8 Jones's Gore Surveyed for Peter Jones 19 May 1700 Pat. to said Jones 18 Oct. 1700.

1000 2 Bright Helmstone Surveyed July 11 1683 for James Pendall lying on the South side of Hopthorn Road near the head of Mill Branch of Casapapas River Beginning at a marked post hole

372 1 1/2 Huckleberry Ridge Surveyed for Jacob Jones 27 August 1750 Beginning at a Round Oak standing close by the Chappell new road and on the North side thereof on the South West by South line of a tract of Land called Collins's Chance and on a man of a Branch of the head of Chester River called the Slaking Branch Branch Pat. 2 May 1752

27 ~ 1 ~ 1 Jones's Adventure Surveyed for Jacob Jones the 25th Day of Oct. 1753 Beginning at the end of the third line of a tract of land called Addition firmly taken by William Ellis Pat. 25 Oct. 1753.

50 ~ 5 ~ Daniels Disappointment Surveyed 18th July 1738 for John Jones.

71 ~ 1 ~ 5 London Derry Surveyed for John Falconer 28 August 1726 Beginning at a rounded Suck by a gum tree standing at the end of the North Line of a tract of land called Washelows delight Pat. 11 November 1727.

Buckingham

250 ~ 2 ~ Neifs Choice Surveyed 17th May 1662 for Robert Neif and William Pearce lying on the East side of Fendall Creek.

290 ~ 11 ~ Richards Part of Danby Resurveyed

2A ~ 11 ~ Addition to Lynn Surveyed for James Moore March 10 1728 Beginning at a rounded Water Oak standing on a point on the Eastermost Side of Springe Creek Pat. 6th White Remard

618 1. 2. 112 Kennards Farm

200 ~ 8 ~ Warners Adventure Surveyed th May 1682
for George Warner lying at the head of the Main Rd. ranch of Skelbore

100 ~ Δ ~ Honvells Adventure Surveyed th June 1682
for John Honvell lying at the head of Jacobs Creek.

30 ~ 1. 3 Bloomsterry Surveyed September th 1688 for John
Made lying on the North side Schester River.

11 ~ 1. 9 Waxford Surveyed September th 1730 for Dominick Kindaugh
and patented to Dominick Kindaugh Junr.

18 ~ 9 Kellys Chance Surveyed for Alexander Kelly
th July 1752 Beginning at a small burred white Oak standing at the
North West Corner of Cross Lanes Land. Pat. 25 August 1757

25 ~ 1 ~ Kellys Addition

20 ~ 10 Longacre Surveyed 13th Oct^r 1720 for Michael Byrne lying near the head of Swan Creek beginning at a rounded stump.

360 ~ 14.5 Comb Whitten Surveyed for William Dixon the 10th October 1685 lying on the North side of the river beginning at a marked poplar tree standing on the South side of a branch issuing out of a Creek called Goose Haven. Pat. 10th May 1685.

510 ~ 10.2 $\frac{1}{2}$ Kennards Point

13 ~ 6 $\frac{1}{2}$ Addition to Kennards Point Surveyed for John Kennard the 15th March 1722 beginning at a rounded white oak standing on the East side of the mouth of a small Marsh on the East side of Church Creek patented to Sarah Kennard Mary Kennard & Ann Kennard 3 April 1722.

253 ~ 7.10 Fathers Care

570 ~ 1.2.10 Chesterfield Resurveyed

52 - 1 - 1 *Knocks Harbour* Surveyed for Henry Knock
the 3^d Day of Decem^r 1745 Beginning at a bounded White Standing
on the North side of the Main Branch of Chester River and at the End
of the 28 Courses of Chesterfield Resurveyed Nov. 3^d Decem^r 1745

70 - 2 - 5 *Knocks Range* Surveyed for Henry Knock 13th
May 1746 Beginning at the End of one hundred perches North from the
Beginning of Chesterfield Resurveyed and two perches West by North
from bounded white Oak Nov. 25th Novem^r 1747.

145 - 5 - 10 *Andover Resurveyed*

210 - 2 - 0 *Nathaniels Part of Danby
Resurveyed.*

85 - 8 - 6 *Kennards Fancy*

150 - 9 - *Soule* Surveyed 18th March 1670 for William Toller lying in
Churn Creek Beginning at a marked Beach

500 10

Stepney Surveyed for Mary Waterman lying on the North side of the River adjoining to the land of Mark Penfey being the same Land for Peter Rowey Cuckolds and now granted to Mary Waterman.

100 A

Mount Hope Surveyed 13 July 1683 for Charles Hollingworth lying on the North side of the River.

300 12

Pearch Meadon Surveyed 7th May 1682 for Richard Hill lying on the North side of the East Branch of Fendalls Creek.

80 3 2

Woodland's Intention Surveyed August 7th 1772 for William Woodland Begunning at a marked poplar Tree standing on the North side of the Easternmost Branch of a Creek called Fendalls Creek now called Fards Creek

1150 2 6

Camells Worth more Surveyed 7th June 1682 for Mr Mann and Thomas Collins lying at the head of Mulpore Creek Begunning at the East Bounds of Mannes Adventure.

100 A

Lamb's Range Surveyed 15 July 1685 for Peter Lamb Begunning at the Southernmost Bounded Tree of their Marshes.

555 1 2 2 1/2

Friendship

100 - 10 - The Grove Surveyed 1st June 1680 for Cornelius Corney
Lying on the East side of the North East Branch of Longford Bay.

100 - 0 - Smiths Bay Surveyed 25 September 1658 for John
Smith lying on the East side of Longford Bay.

100 - 8 - Derby Surveyed 24 September 1658 for John Deer lying on
the East side of Longford Bay.

150 - 3 - Knapley Green Surveyed 8 August 1666 for Anthony
Purse lying by Chester at a point between two arms of the River

197 - 7 - 11 Griffiths Delight Surveyed 17 September 1695 for
Griffith Jones beginning at a Round Oak standing on the North West
Line of Knapley Green. Plat. 25 April 1717.

191 - 7 - 8 Addition to Knapley Surveyed 2 June 1721
for Alexander Milliamson.

265 - 10 - 7 1/2 Spring Garden Surveyed 3 Oct. 1722 for John
Purse lying on the South side of a narrow River beginning at a
marked Red Oak.

32003 - 2 - 1 Worton Mannor

440 ~ 17 1/2 The Adventure

1733 ~ 1 1/2 Bennetts Regutation

175 ~ 3 1/2 Bluntville Surveyed 2 August 1659 for Richard Blunt
Joining to the Land of William Hills.

550 ~ 11 ~ Skidmore Surveyed 2 August 1659 for Edward Skidmore
Joining to the Land of Richard Blunt.

100 ~ Δ ~ Smally Surveyed for James Spruce July 17th 1730 beginning
at a rounded red Oak sapling standing on the East side of the Mill pond
of Middlepear Creek.

500 ~ 10 ~ Yapp Surveyed Septemb. 3. 1659 for William Yapp
Lying on the South side of the paper river near the Land of Col. Utye

150 - 6 - **Pearce's Down** Surveyed for Nathaniel Pearce
September 15th 1721. Lying on the South side of a paper's Cove and on the West
Side of a branch called Lloyd's Creek beginning at a bounded white oak standing
on a branch at the head of a Cove issuing out of the said Creek supposed to
be the second bounded tree of a parcel of land called Mappan's running from
the said Oak North, North East 130 perches to Richard Bennett

150 - 10 - **Stone Town**

350 - 7 - **Hesboms Choice** Surveyed 2^d January 1672 for
George Meall in Fishing Creek at the head of the Western Branch of the Creek

50 - 1 - **Moggys Joynture** Surveyed 2^d January 1672 for
George Meall lying in Fishing Creek at the head of the Western Branch
of the Creek.

20 - 10 - **Gales Addition** Surveyed 15th September 1721 for John Gale
and patented Oct^r 2. 1720 for William Medford.

89 - 3 - **Jimm's Farm**

102 - 1 - **Formans Poor Discovery**

2000 Δ \sim \sim ¹⁶⁸ First part of Free Gift Surveyed 10th September 1692 for Captain Richard Smith lying at the head of Bontake Branch.

1000 1 \sim Godlington Mannor Surveyed 15th September 1689 for Thomas Godlington lying on the West side of the River.

Δ 5 \sim Δ 6 Calders Meadon Surveyed January 9th 1703 for James Calder.

100 \sim Δ \sim Kellys Choice Surveyed for James Kelly 23 February 1702 lying at the head of a creek called Kellys Creek beginning at a bounded highway standing on the East side the main road West 10 January 1705

100 \sim Δ \sim Morris's Rest Surveyed 15th March 1679 for Thomas Morris lying on the North side Godlington Creek.

50 \sim 2 \sim Addition to Tilghmans Farm Surveyed for John Keall November 8th 1729 beginning at a bounded red Oak standing near the Marsh.

115 \sim Δ \sim Skinners Marsh

710 - 1. 0. 5 ⁽¹⁶⁹⁾ London Bridge Renewed

12 - 1. 0 Ash Point Surveyed 29th August 1687 for Thomas Keare
Lying on the North West side of the North West Branch of Longfolds Bay

100 - A - Flower of the Forrest Surveyed June 18th 1705 for
George Moffett Lying on the North side of Chester River beginning at a rounded
red Oak by the side of a swamp called the Bear Swamp belonging to a
Branch called the Bear Branch.

123 - A. 11 Rumpford Surveyed for John Harding Sr March 1718 Lying on
the North side of Chester River beginning at a rounded red Oak standing on
the fork of a Branch called the Star Branch. Pat. 10th May 1725.

360 - 1. 1. 5 Addition Surveyed March 3rd 1712 for William Comery
Lying on the North side of Chester River beginning at a rounded bushy
Oak standing at the East side of a tract of land formerly laid out for Cornelius
Comery called Vienna.

80 - 3. 2. 2 Morfett's Lott Surveyed 3rd August 1752 for George Morfett
beginning at a rounded red Oak being the beginning of a tract of land
called Rumpford Pat. 29 September 1756

77 ~ 3 ~ 1 ¹⁷⁷⁰ The Hurlberry Tract Surveyed
for George Murphy August 17th 1728 beginning at a rounded red Oak
standing by the side of a swamp.

61 ~ 2 ~ 5^h Morfett's Chance Surveyed for George Morfett
28 June 1725 lying on the North side of Chester River in said County
Pat. 6th May 16th 1732.

50 ~ 2 ~ Forrest

970 1 ~ 18 ~ 10 Partnership Surveyed 8 March 1702 for Samuel
Wallace lying on the North side of Chester river beginning at a rounded red
Oak standing in a Fork near a small branch coming out of the Branch
of Morgan's Creek called Iron bridge Branch Pat. 10th April 1715.

100 ~ 1 ~ Whaley's Adventure Surveyed for Daniel
Whaley Oct. 15th 1719 beginning at the South East Corner of a tract of land
called Fair dealing.

929 1 ~ 2 ~ 1^h Millers Purchase

80 ~ 8 ~ Bellekele Beginning at a rounded red Oak Surveyed 21 April
1735 for Robert Maxwell and Anthony Cameron & assigned to Robert Maxwell
and pat. to him September 12. 1736.

22 ²/₂ Addition to Balchule Surveyed 4th March 1736
for Robert Maxwell

23 ¹¹/₁₁ Second Addition Surveyed for Robert Maxwell
11th June 1735 beginning at the end of two perches South from a bounded red Oak
being the beginning of the said Robert's land called Red Meale
Pat. 11th June 1735.

25 ¹/₁ The Mine along side of the Jews Venture Surveyed for Peter
and Nicholas Mafey. 30th March 1708 Surveyed Nicholas Mafey.

100 ^A/_A The Exchange Surveyed for Nicholas Mafey 10th May 1700
Lying on the north side of the head of Chester River beginning at a bounded red
Oak standing on the West side of a branch called black Spinning Branch Pat.
21st July 1720.

72 ²/₁₁ Mafey's Lott Surveyed for William Mafey the 24th March
1722 Lying on the North side of Chester River beginning at a bounded red Oak
standing on the North side of a branch called Spinning Branch. Pat. 10th Oct.
1728.

150 ⁶/₆ Milwards Choice Surveyed 23 February 1705 for
Lovely Milward beginning at a bounded hickory of Hilliers Adventure
Pat. 10th January 1705

81 ³/₃ Macomes Desire, Surveyed for James Macomes
the 7th Day of February 1701 Beginning at a bounded white Oak standing on the
North side of a small Drain that runs out of the river branch which a branch
runs out of the James River Pat. 14th September 1709.

600 - 12 - *Tullys Fancy* Surveyed 26 February 1670 for John Tully and George Henry situated lying on the West side of Chester river.

220 - 0.10 - *Little Grove* Surveyed 19th May 1686 for Henry Staples lying on the main branch of Fairy Creek.

210 - 0.5 - *The Hop* Surveyed 16 April 1719 for Gilbert Falemars lying on the North side of Chester river beginning at a bounded white Oak.

300 - 12 - *Mitchells Adventure* Surveyed for Richard Mitchell 1st May 1750 beginning at a bounded spruce Oak standing on the South side of the old Knuck and on the North side of the mouth of a swamp leading into a branch. Pat. 23rd May 1751.

9 - 11 - *Hampshire* Lying in Chever Creek Surveyed 16th September 1737 for Daniel Perkins.

2 - 23 - *Tatums Meadons* Surveyed September 10. 1730 for John Tatum. Assigned Daniel Perkins.

200 - 0 - *Myers Luck* Surveyed for Luke Myers 29 May 1751 beginning at the end of the East North East line of John Falemars part of the hope Pat. 10 August 1750.

100 Δ Medfords Part of Suffolk

200 \circ **Browards Reserve** Surveyed 10th November 1706 for James Broward lying on the North side of Chester Cove beginning at a Round red Oak standing in the Woods near a Branch belonging to Chester Cove.

1000 Δ **Pentridge** Surveyed 26th June 1670 for William Hemsted lying on the north side of Longfords Bay.

25 Δ **Barnick** Surveyed for Joseph Nicholson 28th November 1710 beginning at the End of two Hundred thirty eight perches North West from the post landing on the South side of the mouth of Hills Cove lying in the North East Branch of Longfords Bay which post being in the place of the first Round of a Tree of a place called High Park.

200 \circ **Chance**

100 Δ **Stand off** Surveyed 11th November 1729 for Judson Pearce

77 - 3.1 ^{17A} Stony Hills

315 - 12 7/8 Warners Swells Resurveyed

300 - 6 - Ridgeley Surveyed 28th January 1662 for Henry Ridgeley
Lying near the head of Morgans Cracks.

20 - 1/2 Johns Neglect Surveyed 29th January 1720 for Daniel
Perkins lying on the West side of Morgans Cracks Beginning at the Beginning
Tree of a parcel of land called Mordons patented 2nd May 1720

125 - 5 - Perkins Adventure

107 - 3.1 Green Branch Resurveyed

200 w Δ w *Filghmans Choice* Surveyed 18th November 1660 for Richard Filghman lying on the North side of Chester, on Statistiff Crick.

200 w O w *Brittain* Surveyed 7th July 1605 for John Jones lying on the Westernmost side of the North bank of Morgan's Creek.

90 w 3th *Perkins's Pollisy* Surveyed 29 January 1720 for Daniel Perkins lying near the head of Morgan's Creek beginning at a Rounded Rock standing at the End of the North side of Watichelaw Resolution Part 2^d May 1723.

200 w O w *Wyatts Chance* Surveyed 12 April 1606 for James Wyatt adjoining to a parcel of land called Kethles Recovery.

ΔΔ w 1.10 *Wyatts Addition* Surveyed 2 August 1700 for James Wyatt lying on the North side of Chester.

Δ1 w 1.0 *James Addition* Lying in Kent County Surveyed 16th March 1722 for James Wyatt and patented to Thomas Wyatt 8th May 1739

50 w 2.3 *Wards Hope* Surveyed 2 August 1700 for Thomas Ward lying on the North side of Chester river.

[Faint, illegible handwritten text on the right page]

259 ~ 10 ~ ¹⁷⁶ Hopewell

7 ~ 0.3h Perkins Meadows Surveyed for Ebenezer Perkins 12 June 1750 beginning at the beginning Sub of a Tract of Land called Southwards Hope Pat. 12 June 1750.

250 ~ 10 ~ Plain Dealing Surveyed 18 Oct. 1683 for John Parsons lying on the North side of Chesters River beginning at marked Rock Hickory.

10 ~ 1 ~ 11 Porters Addition Surveyed for Messrs James Porter and John Porter 7 Day of June 1752 beginning at the Original beginning Tree of Plain Dealing. Pat. to John Porter 8 Oct. 1752

9 ~ 1 ~ Rippen Surveyed 1st November 1750 for John Hayes

200 ~ 0 ~ Middle Branch Surveyed 2 August 1686 for William Dean lying on the Eastern Branch of Swan Creek

117
115 ~ 17.10 Pages Purchase

117 ~ Δ. 8^h Providence

260 ~ 10.5 Piners Grove Surveyed 25 August 1687 for Simon
Millmore lying on the West side of Fairy Creek.

152 ~ 6.1 Piners Addition Surveyed 19th January 1692 for
Thomas Piner lying on the East most Branch of Longford Bay.

260 ~ 10.5 Endeavour Surveyed March 8th 1702 for William Comegys
Lying on the North side of Chester River beginning at a Round red Oak
Standing on the side of a Branch called Dogue Branch.

100 ~ Δ ~ Palmers Desire Surveyed for Benjamin Palmer
August 10th 1728 beginning at a Round white Oak standing on the head of a Drain
that leads down into Chesta meadow.

57 - 2³ Addition to Palmers desire
Surveyed for Benjamin Palmer 2^d Decem^r 1729 part. 16 said 8 August
1732.

14 - 7 Palmers Hazard Surveyed for George
Merritt 28 June 1725 Lying on the north side of Chester river Part. 16
Benjamin Palmer 27th Oct. 1732.

300 - 12 - Hals Surveyed 2th March 1672 for Charles James Lying in
Stulpons Creek.

105 - 1² Killingsworthmore

17 - 1¹ Morsells Part of Killingsworthmore

300 - 12 - Good Hope Surveyed 5th June 1682 for John James
Lying on the North side the main branch of Chever Creek.

[Faint mirrored handwriting from the reverse side]

[Faint mirrored handwriting from the reverse side]

[Faint mirrored handwriting from the reverse side]

[Faint mirrored handwriting from the reverse side]

[Faint mirrored handwriting from the reverse side]

[Faint mirrored handwriting from the reverse side]

75 - 3 - ¹⁷⁹ Simms Prime Choice

150 - 6 - Heath's Longlands Surveyed 5 July 1700
for James Heath in Fendall Creek

200 - A - Henms Roost Surveyed 9th Oct. 1664 for Thomas
Pryor lying on the East side of the Great River on the South side of Henning
Creek

30 - 1 - 2^h Palmers Hazard Surveyed for Benjamin
Palmer Jun^r 2nd August 1752 lying between Newmans Cove, The Forestand
the Addition to Palmers woods beginning at the Beginning Tree of Palmers
down to Pat. 10 August 1753.

150 - 3 - Orchard's Neck Surveyed 27 April 1662 for William
Orchard lying in Fendall Creek

259 - 96 Hopewell

200 ~ Δ ~ **Gibbs Choice** Surveyed 20th March 1669 for John Gibbs
Lying in Jacobs creek within Steepone Creek.

550 ~ 11 ~ **Stanleys Hope** Surveyed 5th June 1669 for William
Stanley lying on the West side of Jacobs Creek within Steepone Creek

75 ~ 7.6 ~ **Partnership** Surveyed 12th September 1705 for Matthew
Howard and partners 1st September 1709 to John Rafen's

200 ~ 8 ~ **Pool** Surveyed 6th June 1682 for John James lying between
Jacobs Creek and Howells Great Pond.

12Δ ~ Δ.11 ~ **Warners Marsh** Surveyed 2nd July 1697 for George
Warner below Howells point.

300 ~ 12 ~ **Friendship Resurveyed**

44 ~ Δ.5 ~ **Tatum's Mount** Beginning at a Bounded Gum
Tree standing on the South side of Shivers Creek Surveyed 13 August 1735 for
John Tatum.

181
45 w 1.10 *Rogers Double Purchase*

227 w q.1 *Basins Part of Heals*

55 w 2.2th *Weglet* Surveyed for William Woodland 2 Oct. 1742 beginning at a bounded post standing on the West side of Palmers Creek being the beginning of the New River. Oct. 15. August 1743.

100 w Δ *Mayford* Surveyed July 1687 for Charles James dying at the Mouth of Drayton Creek

10 w 1.7th *Browns Swell* Surveyed 2^d Day of February 1742 for John Brown beginning at a bounded white Oak standing on the East side of a large road from the Meeting House to Green Creek patented 12 July 1740

100 w Δ *Suburbs* Surveyed 15 April 1706 for John Read beginning at a bounded white Oak standing near a branch called Alder Branch and standing at the end of the South West end by West line of a parcel of Land called Popwell belonging to said Read.

100 ~ 8 ~ Middle Spring ¹⁸² Surveyed 6th March 1668 for John
and James Ringgold lying on the East side of Swan Island Creek.

100 ~ A ~ Deprived Mischief Surveyed 6th August 1689
for Benjamin Ricard lying at the head of the main branch of Swan Creek

16 ~ 1.10 ~ Long Cove Surveyed for Benjamin Ricard January 1st 1731
beginning at a rounded corner west.

300 ~ 6 ~ Kimbolton Surveyed 29th September 1658 for Robert Laughan
lying on the West side of Longfords Bay

600 ~ 12 ~ The Plains Surveyed 6th June 1677 for James Ringgold in Chester
lying in Longfords Bay beginning at a marked Poplar lying on the East side
the North Branch.

300 ~ 6 ~ Bath Surveyed 12th July 1677 for Joseph Micks lying on the West side
the North East Branch of Chester River.

20 ~ 2 ~ Thomas's Landing Beginning at a rounded white
Oak standing at the mouth of a riddle near head lying on the West side of said Creek
Surveyed 16th November 1732 for William Thomas.

1000 2 ~ ~ ¹⁸³ Tighmans & Foxleys Grove
Surveyed 25 February 1675 for Mary Tighman lying on the East side
Through the Creek beginning at a marked Oak by the Creek side.

200 ~ 0 ~ New Key Surveyed 10 June 1678 for William Key lying in
Charter river in Longfords Bay.

108 ~ 0.2 Elias & James Ringolds Part
of Huntingfields

100 ~ 2 ~ Bradway Surveyed 29 September 1658 for Nicholas Bradway
Lying on the East side Longfords Bay adjoining to the land of John Dear

621 ~ 13.6 Thomas Ringolds Part of
Huntingfields

100 ~ 1 ~ Staples Warren Surveyed 13 August 1656 for Henry Staples
Lying on the West side Fairy Creek.

[Faint, illegible handwritten notes and diagrams on the right page, possibly bleed-through from the reverse side.]

1100 2nd Δ ^{18A} Lons Bennett

7A 2nd Mth Steeny Surveyed 2th March 1717 for William Comeggs and Samuel Madell lying on the North side of Chester River beginning at a Rounded white Oak.

50 2 Batchulors Hall

300 12 Ryders Beginning

213 8th Mth The Upper Part of Darnalls Farm

100 Δ Addition Surveyed for William Ellis 10th April 1711 lying on the borders of this Province near one of the Branches of Duck Creek Beginning at a Rounded Oak standing about two furlongs to the Eastward from the Head of the South East Land of a Tract of Land called Williams (wherein) Contained Pat. 10 April 1711.

150 w 6 ¹⁸⁵ Green Meadow Surveyed for William Hanna
1st May 1706 lying at the head of Timely Creek beginning at a small white Oak
standing near a branch of the said Creek. Pat. 16th Oct. 1707

731 w 8 3 Shadshold

125 w 5 Timely Discovery

70 w 2 10 Tibbets Venture Surveyed for James Tibbets 1st December
1727 lying on the south side the head of Sages Pass beginning at a small white Oak
standing on the south side the Mill branch Patented to James and Richard Tibbets
the 5th December 1741.

550 w 11 Rousby's Recovery Surveyed 13th August 1660 for Christopher
Rousby lying at the North East branch of Langford's Bay.

250 w 5 Fishing Pond Surveyed 10th August 1666 for Nathaniel Miles
Lying on the North bounds of John Malschill's.

50 w 2 Slupe Surveyed 2nd January 1671 for George Willson lying in Sages Pass
River in Conwell's Creek.

10 " 0 ¹⁸⁶ Mitchells Proposal Surveyed 11 December
1729 Beginning at a Rounded Chestnut Tree standing on a hill side
Patented to King James the 23 August 1729.

86 " 3.51 Drunnear Surveyed for William James the 12th February
1723 being two parcels of land one called Conclufion the other Surveyors
Sept which were taken up by the said William James on his Lordships
Proclamation) Beginning at a Rounded white Oak standing on the North
East side of a Branch of Sapepas river called the Mill Branch patented
12 February 1723.

100 " A Exchange Surveyed for John Faulkner the 28 August 1700
Lying on the South side of Sapepas river at the head of a creek of said river
called Faulkners Creek beginning at a marked Hickory standing at the head of
a creek and by the side of a Valley.

200 " 0 Biman Surveyed 22 Oct 1682 for Robert Mackie lying on the
North side the main Road near the head of Palaners Creek in Sapepas River.

150 " 6 Mackies Purchase Surveyed 16 July 1683 for
Alexander Mackie lying on the South side Sapepas river.

275 " 11 Smiths Venture

160 ~ 6.5^h Grove Addition Surveyed 3rd July 1720 for James Smith lying on the West side of Chester river and on the Westmost branch of a brook issuing out of the said river called Fairy Creek beginning at a marked red oak standing on a plain Plat. 2^o May 1722.

183 ~ 3.8 Smiths Part of Worthy's Folly

290 ~ 5.10 Batchelors Hope Surveyed 22 August 1686 for John Davis lying at the mouth of a brook called Welch Harbour.

50 ~ 2 ~ Penrose Surveyed 2^o May 1687 for Thomas Penrose lying on the north side of Chester river.

27 ~ 1.1 Addition to Scotts Lott Surveyed for John Scott 27th Day of May 1728 beginning at the beginning of Scotts Lott Plat. 2^o 27th May 1728

118 ~ 4.9 Scotts Lott Surveyed for Edward Scott August 20th 1720 beginning at a bounded white Oak the South East 160^o feet here

31 ~ 1.5 Kings Prevention Surveyed 19th June 1689 for Elias King lying on the North side of Long Creek

1200 1 Δ

Huntingfields Surveyed 17th July 1659 for Thomas Ringold lying on the West side of Charter River.

600 1 Δ

Vinna Surveyed 13th August 1683 for Cornelius Comings lying on the North side of Charter River.

90 3 9

The Reserve Surveyed 5th March 1717 for William Comings lying on the North side of Charter River beginning at a Round Spanish Oak.

3

Smiths Point Surveyed for Nicholas Smith 20th August 1726 beginning at the beginning of a Tract of Land called Grantham Part 1st November 1727.

150 6

Norcutt Surveyed for Richard Norcutt November 8th 1704 beginning at a Round white Oak standing by a small pond above the head of a little pear meadow.

10 Δ

Hopenwell Surveyed 9th March 1726 for William Smithers.

500 10

Grantham Surveyed 18th June 1678 for Honen Chaplaine beginning at a marked white Oak by a Mill Race.

180 5 2

Smithers Plains Surveyed 2nd Oct^r 1720 for William Smithers

See also

180 ~ 7.6 *Smithers part of Addition
& Rumford Resurveyed.*

172 ~ 12.10 *Agreement Surveyed 1st March 1777 for William Comings
and Samuel Wallau lying on the North side of the river beginning at
a rounded Black Oak.*

100 ~ 16 *Marron Bone*

381 ~ 15.11 *Darby*

51 ~ 2.2 *Adventure Surveyed 30th September 1702 for John Sutton
Lying on the North side of the river and on the East side Longfords Key
beginning at a rounded white Oak standing on a point called Thompsons point
Pat 13th May 1712.*

10 ~ 1.7 *Widons Rest Surveyed 8th August 1715 for Rachel Battershill
beginning at a marked highway standing in the South line of a tract of
land called Ananda Pat 10th September 1716.*

[Faint mirrored handwriting]

[Faint mirrored handwriting]

[Faint mirrored handwriting]

[Faint mirrored handwriting]

[Faint mirrored handwriting]

[Faint mirrored handwriting]

[Faint mirrored handwriting]

[Faint mirrored handwriting]

97 ~ 3.11 ¹⁰⁰ Donks part of Killingsworth-
more

15 ~ 7th Addition to Simpsons Adven-
ture Surveyed for Richard Swell 2^d April 1730 Patented
to said Swell 16 November 1732.

100 ~ Δ ~ Simpsons Adventure Surveyed for William
Simpson 20th Oct. 1719 Lying on the South side of a passage beginning
at a Round white Rock standing in the Fork of the main channel of a creek
called Island Creek Patented 16 Oct. 1722

200 ~ 8 ~ Pearcis Meadow Surveyed 15 May 1732 for Gideon
Pearce.

255 ~ 10.2^h Rhue Adam

113 ~ 11.3^h Hazel Meadow Surveyed for John Redgrave
2^d July 1739 Assigned John Stevenson.

700 ¹⁹¹ 12 *Broadnox Creek* Surveyed 2nd September
1658 for Thomas Broadnox dying on the North West side of Longfords Bay

285 11.5 *Addition*

72 1.5 *Maverlys part of Broad creek*

15 7 *Spencers part of Friendship Resurveyed*

18 1.1 *Smiths Chance* Surveyed for Thomas Smith 8th Sept.
1756 Beginning at a marked Mulberry Tree standing by a small Cove opening
out of the West side of Church Creek East of the Dumber 1756.

100 1 *Redriff* Surveyed 20th August 1700 for John Turgis dying by the main
branch of Mather Creek.

[Faint mirrored handwriting]

[Faint mirrored handwriting]

[Faint mirrored handwriting]

[Faint mirrored handwriting]

[Faint mirrored handwriting]

[Faint mirrored handwriting]

222 ~ 2. 11 ¹⁹² Trulocks Right of Heals

169 ~ 3. 9 Trulocks Adventure

150 ~ 10 ~ Blays Addition Surveyed 1st February 1678 for
Edward Blay lying at the head of Sunnys Crack.

236 ~ 9. 5 Tildens part of Blays Park

294 ~ 11. 9^{1/2} Bishford Resurveyed

50 ~ 2 ~ Adventure Surveyed for John Tilden 23 April 1752 beginning
at the end of the first line of Kilgraves part of a Tract of land called Chance
being at the south corner of of the 1st Part & running thence by South twenty
four perches thence North forty one Degrees West eight miles perched Oct. 5 Oct.
1752.

120 ~ 5.7 ¹⁹⁸ Turners part of Suffolk

200 ~ 8 ~ The Rewards Surveyed 10th Oct. 1673 for Cornelius Comings
and Nathaniel Gault dying on this side the North East Branch of Long
Point Bay.

11 ~ 1.0 ~ Garnetts meadow Surveyed for Thomas Garratt 12th Feb^y
1730 and patented for George Garratt beginning at a marked Walnut Tree

15 ~ 1.10 ~ Forced to it Surveyed for Edward Selghman 13 February 1729
beginning at the end of one hundred and seventy perches North seven Degrees East
from a bounded white Oak being the beginning Tree of a Tract of Land called the
Reserve whereon Benjamin Blauhs took mans lives and from which place a red
Oak now marked with eight notches stands north seven Degrees East one perch
Pat. 13 February 1729.

50 ~ 2 ~ Ferrills Addition Surveyed 26 April 1731 for Daniel
Ferrill Pat. 16 said Ferrill 7th Oct. 1732

100 ~ 0 ~ Wards Oak Surveyed 5 July 1672 for Matthew Ward
beginning at a marked Oak below a marsh beginning up the river

19Δ
Δ5 ~ 1 ~ 10 Addition to Wards Oak Surveyed for John
Sutton 1st July 1701 Lying on the North side of Chester river beginning at a marked
white Oak standing on the Eastern end of a small flat or branch being the first
bounded Tree of a parcel of land called Wards Oak.

50 ~ 2 ~ Dowdalls Fancy Surveyed 21st May 1713 for John Dowdall
beginning at the first beginning of a Tract of land called Wards Oak

300 ~ 12 ~ Debtford Surveyed for William Comynge and John Tremain December
16. 172Δ. Beginning at a bounded white Oak standing on the East side of the
head of a branch called Bridges branch.

22 ~ 11 Addition Surveyed for Gideon Pearce 13th January 1729 Pat.
to said Pearce to said Pearce 7th August 1732.

7Δ ~ 2 ~ 11 Sarahs Lott Surveyed for Thomas Garnett 29th November
1729 Lying near Broad Creek opening out of Chester River. Beginning at a
bounded white Oak Pat. to George Garnett.

100 ~ Δ ~ Roger Hicks's Intent Surveyed November 8th 1727
for Roger Hicks.

Δ20 ~ 0.5 Providence

[Faint, illegible handwritten text on the right page, possibly bleed-through from the reverse side.]

188 " 7 1/2 Tilldens & Bronns part of Blays Range & Blays Addition Resurveyed.

11 " 5 1/2 Tillards Addition Surveyed for John Tillard 21st Day of Decemr 1753 Beginning at a bounded Oak standing at the End of North by four furlows then south then from the same Tree of County. Pat. to Roger Tillard 10 June 1752.

200 " 8 " Ferrys part of Suffolk

682 " 15 1/2 The Resurvey on part of Tilghmans Farm & Chance

77 " 3 1/2 Tobins Lott Surveyed for Richard Tobin 15th August 1752 Beginning at a small bounded Oak standing about two furlows North by East from a white Oak in the North by East Line of a Tract of Land called Chance being the North East Corner Tree of Cornelius Comings part of the Resurveyed Tract of Chance Pat. 11 August 1753.

[Faint, illegible handwritten text, likely bleed-through from the reverse side of the page.]

200 - 8 - Fork ^{Surveyed 12th November 1681 for William Pearce lying on the south side of the river on the West side of a branch of the River.}

100 - A - The Reversion ^{Surveyed for John Pearce July 3rd 1721 lying on the South side of the river was beginning a high ground and red bank standing on a high Hill on the West side of a creek called Palmers Creek near the head thereof and running thence South one hundred paces.}

700 - 12 - Partnership Point ^{Surveyed 19th December 1685 for John Edmundson and assigned William Wingham and by him to Thomas Thurstock lying at the mouth of Partnership Creek, respecting the Beaver Island.}

100 - A - Kuisborough ^{Surveyed 13th July 1683 for Charles Hellingworth lying on the North side of Chester River.}

150 - 3 - Boonley ^{Surveyed 17th May 1679 for Thomas Boon lying on the West side of the North West branch of Longfords Bay.}

83 - 3 - 52 Wilmers Grove

[Faint, illegible handwritten notes and sketches on the right page, possibly bleed-through from the reverse side.]

665 1. 6. 72 ¹⁹⁷ Saint Jantons

11 " 52 Willsons Neglect Surveyed for Isaac Freeman 20th May 1752 Lying between Novina and Sapapas River beginning at the end of the first line of Novina. Pat. to George Willson 19th September 1753.

100 " A " Petersfield Surveyed for Peter Willson August 11th 1720 beginning at a rounded post and lowest Tree standing on the head of a small cove joining out of Willsons Creek.

250 " 5 " Cox's Stake Surveyed 28th February 1665 for Thomas Poyser lying on the South side of Sapapas river.

100 " A " Lincoln Surveyed 16th June 1672 for Jonathan Lincoln lying on a branch of Sapapas river by a small branch.

A " 2 Henn Island Surveyed for Simon Willson 2nd July 1723 Lying in Sapapas River respecting the land whereon the said Simon Willson's New River beginning at a small rounded post standing on the point of the uppermost part of the said Island Pat. 2nd July 1723.

329 ~ B ~ 2 *Wilmores Arcadia* Surveyed 25 Oct. 1702
for Lambert Wilmore dying in Cecil County, beginning at a rounded Oak
being the first Roundell Tree of Trees purchased patented 20 May 1713.

150 ~ 6 ~ *Hopefull Unity* Surveyed 12 May 1680 for Charles
James, James Frisby, John Howell, George Mearns, Joseph Stephens, William Planel
Richard Patten, Ebenezer Blackiston, Joseph Gandy, Edward Klay, Robert Saunders
and John James dying on the West side of the main Branch of Steel Spring.

50 ~ 2 ~ Δ *Woodlands Folly* Surveyed 25 November 1721 for James
Woodland beginning at a rounded white Oak standing on a point on the West
side of a branch of the Springwood Pat. 17th September 1722.

Δ 00 ~ 16 ~ *Lincoln Inn Fields* Surveyed 11 June 1696 for
Jonathan Linder dying on the South side of the Springwood.

100 ~ Δ ~ *Chance*

170 ~ 6 ~ 10 *Coffin* Surveyed 17 July 1680 for Edward Jones dying on the South side of the Spring
River.

100 ~ Δ ~ *Husbands Lott* Surveyed for Thomas Husbands June
1st 1725 beginning at a rounded white Oak standing at the head of a Branch.

350 - 1A - **Piney Grove** Surveyed for Thomas Ringgold 15th December 1720
Beginning at a rounded white oak standing by a Marsh at the head of a branch
flowing out of Swan Creek Pat. of N. Carolina Ringgold.

93 - 3.9 **Addition**

100 - 2 - **Lovely's Wick** Surveyed 22nd September 1658 for Delawance
Lovely lying on the North side of Chester River.

300 - 0 - **Hillston** Surveyed 23rd December 1659 for Thomas Hill lying on the
West side of Chester river on the West side of Longfords Bay.

100 - A - **Intratnams Addition** Surveyed 16th April 1695 for
Edward Swatnam lying between the branches of Longfords Bay.

200 - 8 - **Bristol** Surveyed 2nd July 1678 for John Symon and Edward
Swatnam lying between the North and South branches of Longfords Bay.

500 - 1 - **Willmors Farm** Surveyed 25th May 1680 for Simon Willmore
lying at the head of Ratcliffe Creeks Creek.

[Faint, illegible handwritten text on the right page]

500 1. Buckingham Surveyed 31st July 1680 for Simon Willmors
lying on the North West side of Chester River.

300 6 Partnership Surveyed 20th August 1661 for Joseph Miches and
Thomas Hymond lying on the West side of Chester River beginning at a marked Oak
over a Marsh.

200 Δ Chester Point Surveyed 6th July 1672 for Matthew Ward lying
on the North side of Chester River beginning at a marked Cedar over a point

11 1 82 Shields Surveyed 25th January 1688 for Simon Willmors lying on the North
side of Chester River beginning at a marked Oak standing upon a knoll on the East
North East side of Highgate and Felys grave.

196 7 102 Clarks Conuiniency Surveyed April 15th 1705 for
Domiel Clark lying on the North side of Chester River and on the South side
Langfords Bay beginning at a bounded white Oak standing near the head of
a creek called Baith Bank.

15 7th Addition Surveyed for Thomas Willkins 23rd July 1753 beginning at a
bounded cedar post being the beginning post of Homageys Farm Addition Pat. 23rd
July 1753.

50 2 The Range Surveyed for Thomas Willkins 8th April 1727 beginning
at a white Oak marked with eight Notches standing by the old road leading to old
Town and on the West side of the Interfection of the North East by East line
of New York with the North by West line of Stratford Manor Pat. 5th April 1727

72 ~ 1 ~ 8¹/₂ Chance Surveyed for Thomas Willkins 29th April 1726 Beginning at the end of the Eastward Coast line of the Ofward Inland called the Policy formerly Taken up by Cornelius Commeys Deceased Pat. 16th November 1724

100 ~ 16 ~ Honest Dealing Surveyed 10th September 1685 for Daniel Cunnell and John Satterly joining the North side the great Main Branch of Chester River.

12 ~ 1 ~ 8¹/₂ Addition to Honest Dealing Surveyed 6th June 1686 for John Satterly joining to a parcel of Land called Honest Dealing.

100 ~ 16 ~ Stevenson Surveyed 5th May 1688 for William Stevenson joining the North side of Chester River Beginning at a marked red Oak.

80 ~ 0 ~ Perkins Mistake Surveyed 27th February 1738 for Ebenezer Perkins Beginning at a rounded red Oak standing on the South side of a small Valley Pat. 19th August 1722.

15 ~ 1 ~ 9¹/₂ Rebeccas Desire Surveyed for Reem. Schel 2nd Nov. 1729 Pat. to said Schel 7th August 1732.

0 ~ 3 ~ Wind Mill Hill Surveyed for David Witherspoon 13 July 1723 Beginning at a rounded Oak on the left side of the River being the Beginning Tree of Lincolns Pat. 13 July 1723

[Faint, mostly illegible handwritten notes and sketches on the right page, including some vertical lines and scattered characters.]

13 " 67 ²⁰² **Acklands Lott** Surveyed January 9th 1732 for William Acklands.

100 " Δ " **Miers Chance** Surveyed for Stephen Miers 12th December 1730 Lying on the North side of Cypress Branch on the North side of the River beginning at a bounded white standing on the East side of a branch Pat. 2nd May 1733.

100 " Δ " **Little Forrest** Surveyed 28th August 1718 for William Somers Lying on the North side of Cypress Branch beginning at a bounded white Oak being the Easternmost bounded Tree of a parcel of Land called Mill meadow Pat. 25th July 1732

129 " 5.9 **Welch's part of Agreement Resurveyed**

65 " 2.7 1/2 **Widons Chance** Surveyed September 9th 1705 for Margaret Robinson Adjoining to a parcel of Land called Rushmore beginning at a bounded White Oak being the bounded Tree of said Land.

370 " 15.1 1/2 **Damson Point**

15 " 7 1/2 **Edinburgh** Surveyed for John Walton 28th March 1750 beginning at a bounded post standing at the End of the second line of a Tract of Land called Mackays Purchase, Pat. 20th March 1750.

8254 13 - Adventure

50 ~ 2 - *Gibbs Chance* Surveyed 30th March 1710 for Richard Gibbs lying near the head of Grayes Inn Creek Beginning at a Rounded Oak standing near said creek and near the Land of Richard Hovous Pat. 20 April 1715

100 ~ 2.5 - *Earlys Beginning* Lying near Rock Hill Creek Surveyed 25th June 1725 for William Early.

207 ~ 7.32 - *William and Marys Adventure*

CERTIFICATE OF CAMERA OPERATOR

I hereby certify that the documents represented by the micrographics appearing on this roll of film designated as Reel No. SR 4386 were photographed by the undersigned on this date. Land Office Rent Rolls

Reel begins with Rent Rolls

Reel ends with Patent List

By Elaine Hunt

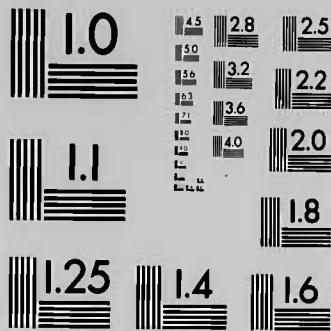
DATE May 14, 1990

MdHR Commission

MARYLAND STATE ARCHIVES

Annapolis, MD

PM-1 3½"x4" PHOTOGRAPHIC MICROCOPY TARGET
NBS 1010a ANSI/ISO #2 EQUIVALENT



PRECISIONSM RESOLUTION TARGETS

