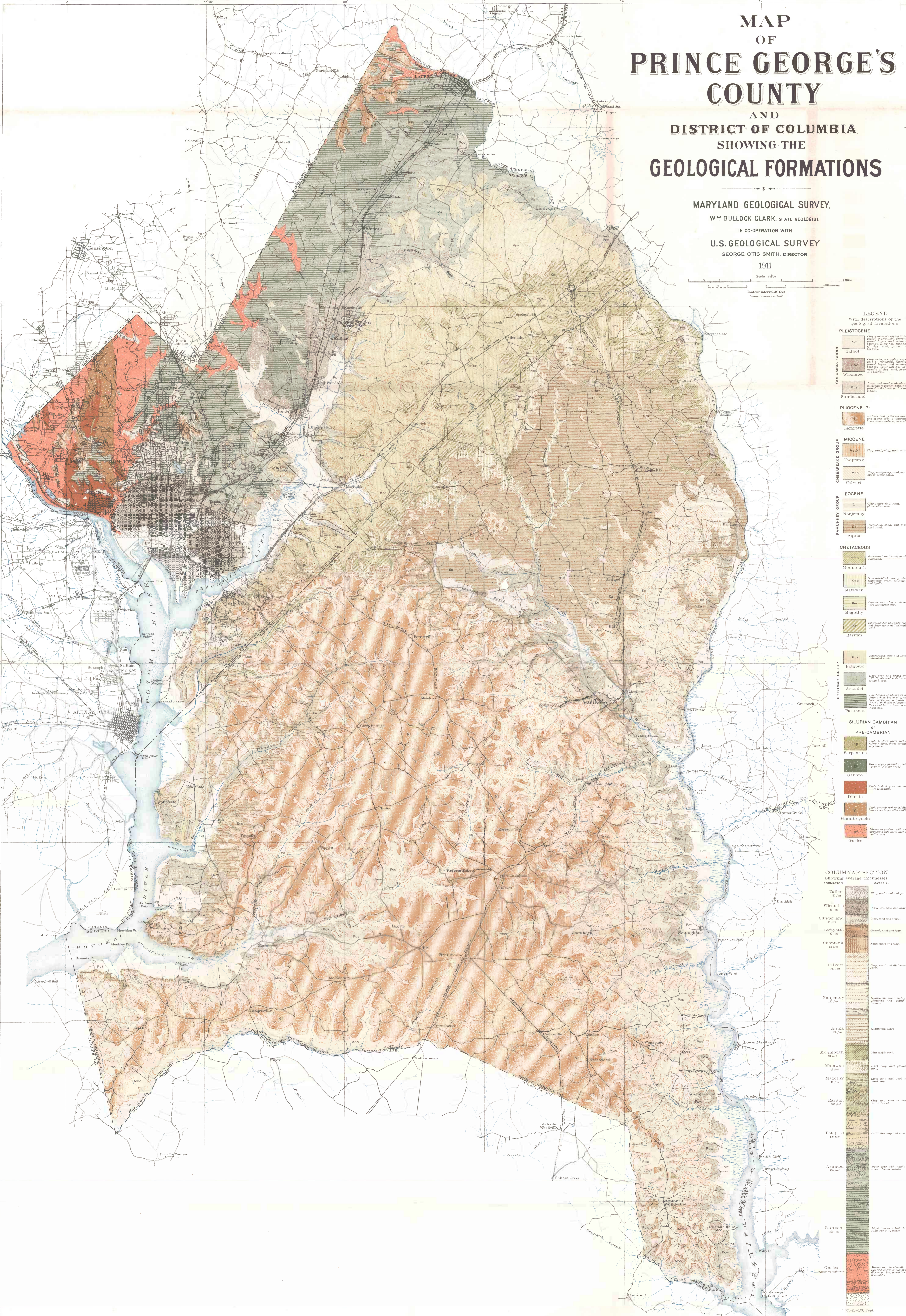
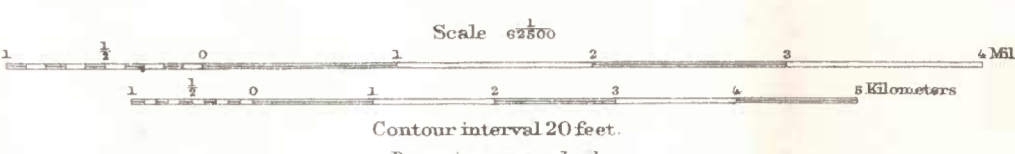


MAP OF PRINCE GEORGE'S COUNTY AND DISTRICT OF COLUMBIA SHOWING THE GEOLOGICAL FORMATIONS

MARYLAND GEOLOGICAL SURVEY,
WM BULLOCK CLARK, STATE GEOLOGIST.
IN CO-OPERATION WITH
U.S. GEOLOGICAL SURVEY
GEORGE OTIS SMITH, DIRECTOR
1911



LEGEND With descriptions of the geological formations

- PLEISTOCENE**
- Talbot: Clay loam, containing upper part of the Potomac group, and containing fossils of the same age.
 - Wicomico: Clay loam, containing upper part of the Potomac group, and containing fossils of the same age.
 - Sunderland: Clay loam, containing upper part of the Potomac group, and containing fossils of the same age.
- PLIOCENE (?)**
- Lafayette: Sand and gravel, containing fossils of the same age.
- MIOCENE**
- Choptank: Sand and gravel, containing fossils of the same age.
 - Culvert: Sand and gravel, containing fossils of the same age.
- EOCENE**
- Nanjemoy: Sand and gravel, containing fossils of the same age.
 - Agulita: Sand and gravel, containing fossils of the same age.
- CRETACEOUS**
- Montomah: Sand and gravel, containing fossils of the same age.
 - Matawan: Sand and gravel, containing fossils of the same age.
 - Magothy: Sand and gravel, containing fossils of the same age.
 - Rafiah: Sand and gravel, containing fossils of the same age.
- POTOMAC GROUP**
- Pataasco: Sand and gravel, containing fossils of the same age.
 - Arundel: Sand and gravel, containing fossils of the same age.
 - Patterson: Sand and gravel, containing fossils of the same age.
- SILURIAN-CAMBRIAN**
- PRE-CAMBRIAN
 - Serpentine: Dark, heavy granitic rock, containing fossils of the same age.
 - Gabbro: Dark, heavy granitic rock, containing fossils of the same age.
 - Diorite: Light granitic rock, containing fossils of the same age.
 - Granite-gneiss: Light granitic rock, containing fossils of the same age.
 - Gneiss: Microscopic granitic rock, containing fossils of the same age.



Geology of the Crystalline Rocks by Arthur Keith,
Geology of the Coastal Plain formations by B. L. Miller and A. Robbins.