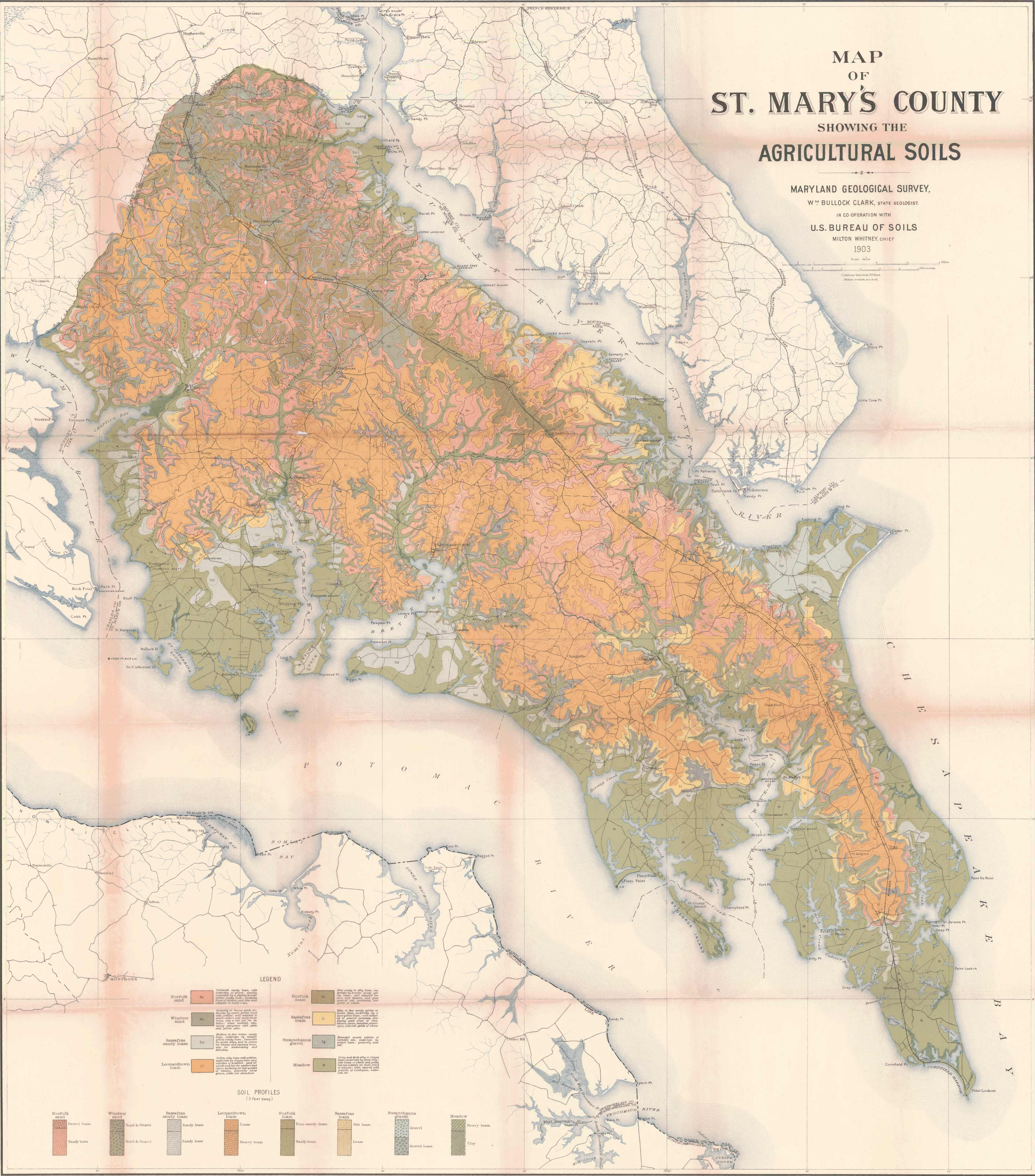


MAP OF ST. MARY'S COUNTY

SHOWING THE AGRICULTURAL SOILS

MARYLAND GEOLOGICAL SURVEY,
 WM BULLOCK CLARK, STATE GEOLOGIST.
 IN CO-OPERATION WITH
 U. S. BUREAU OF SOILS
 MILTON WHITNEY, CHIEF
 1903

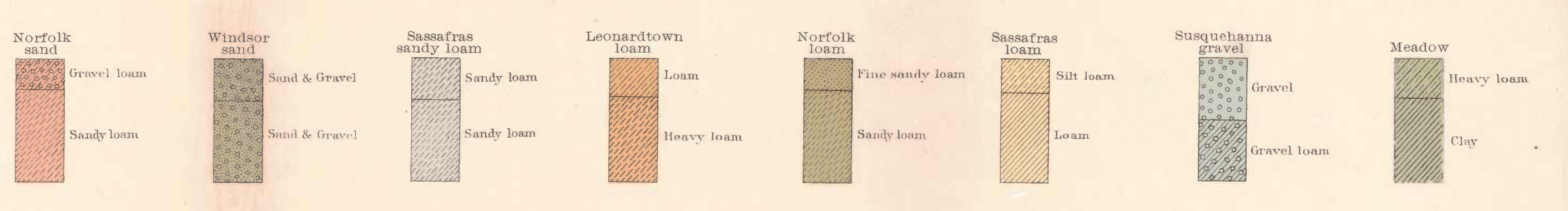
Scale 1:50,000
 Contour interval 20 feet.
 Datum on coast low level.



LEGEND

Norfolk sand	Windsor sand	Sassafras sandy loam	Leonardtown loam	Norfolk loam	Sassafras loam	Susquehanna gravel	Meadow
Wet, heavy, fine-grained, with abundant iron concretions, and a thin, yellowish-brown, silty, sandy loam, structure, and a thin, yellowish-brown, silty, sandy loam, structure, and a thin, yellowish-brown, silty, sandy loam, structure.	Generally, for heavy sand, structure, but covers yellow sand with a thin, yellowish-brown, silty, sandy loam, structure, and a thin, yellowish-brown, silty, sandy loam, structure.	Medium to fine, heavy, sandy loam, with a thin, yellowish-brown, silty, sandy loam, structure, and a thin, yellowish-brown, silty, sandy loam, structure.	Yellow, silty loam with a thin, yellowish-brown, silty, sandy loam, structure, and a thin, yellowish-brown, silty, sandy loam, structure.	Wet, heavy, fine-grained, with abundant iron concretions, and a thin, yellowish-brown, silty, sandy loam, structure, and a thin, yellowish-brown, silty, sandy loam, structure.	Silty to fine, sandy loam or loam, with a thin, yellowish-brown, silty, sandy loam, structure, and a thin, yellowish-brown, silty, sandy loam, structure.	Round, coarse, pebbles of quartz, with a thin, yellowish-brown, silty, sandy loam, structure, and a thin, yellowish-brown, silty, sandy loam, structure.	Grass and deep silty or clayey, with a thin, yellowish-brown, silty, sandy loam, structure, and a thin, yellowish-brown, silty, sandy loam, structure.

SOIL PROFILES
 (3 feet deep)



Surveyed by
 Jay A. Bostee,
 1900.