

MAP OF ST. MARY'S COUNTY

SHOWING THE GEOLOGICAL FORMATIONS

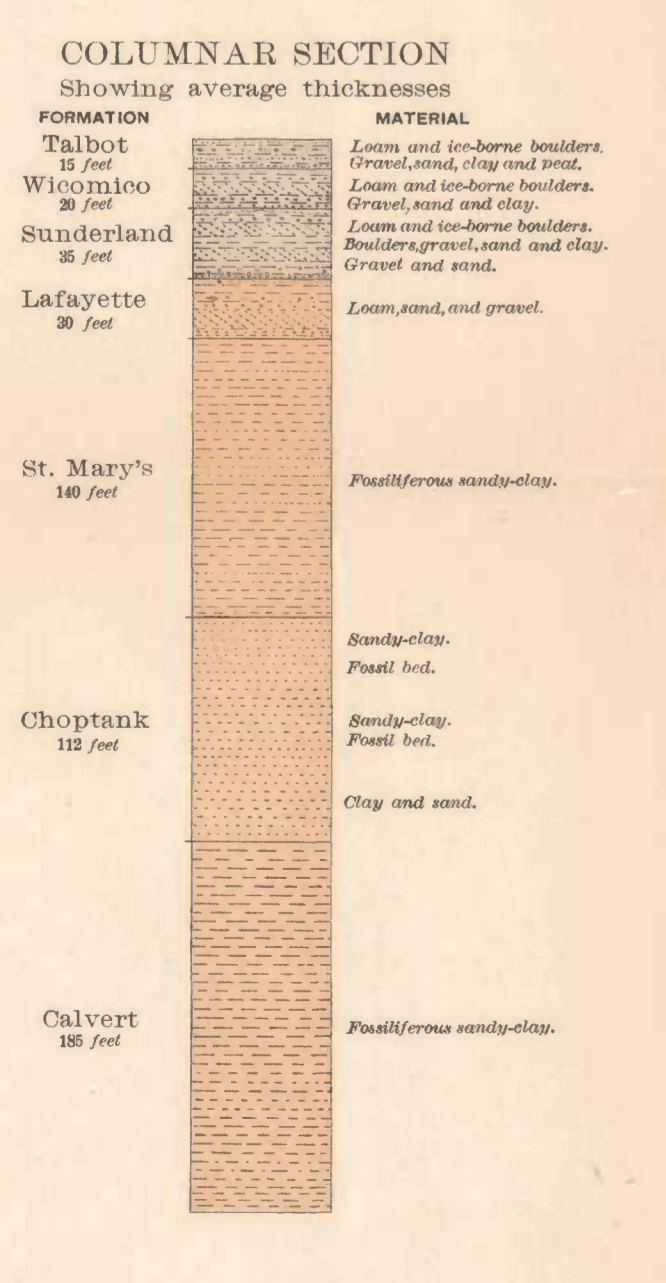
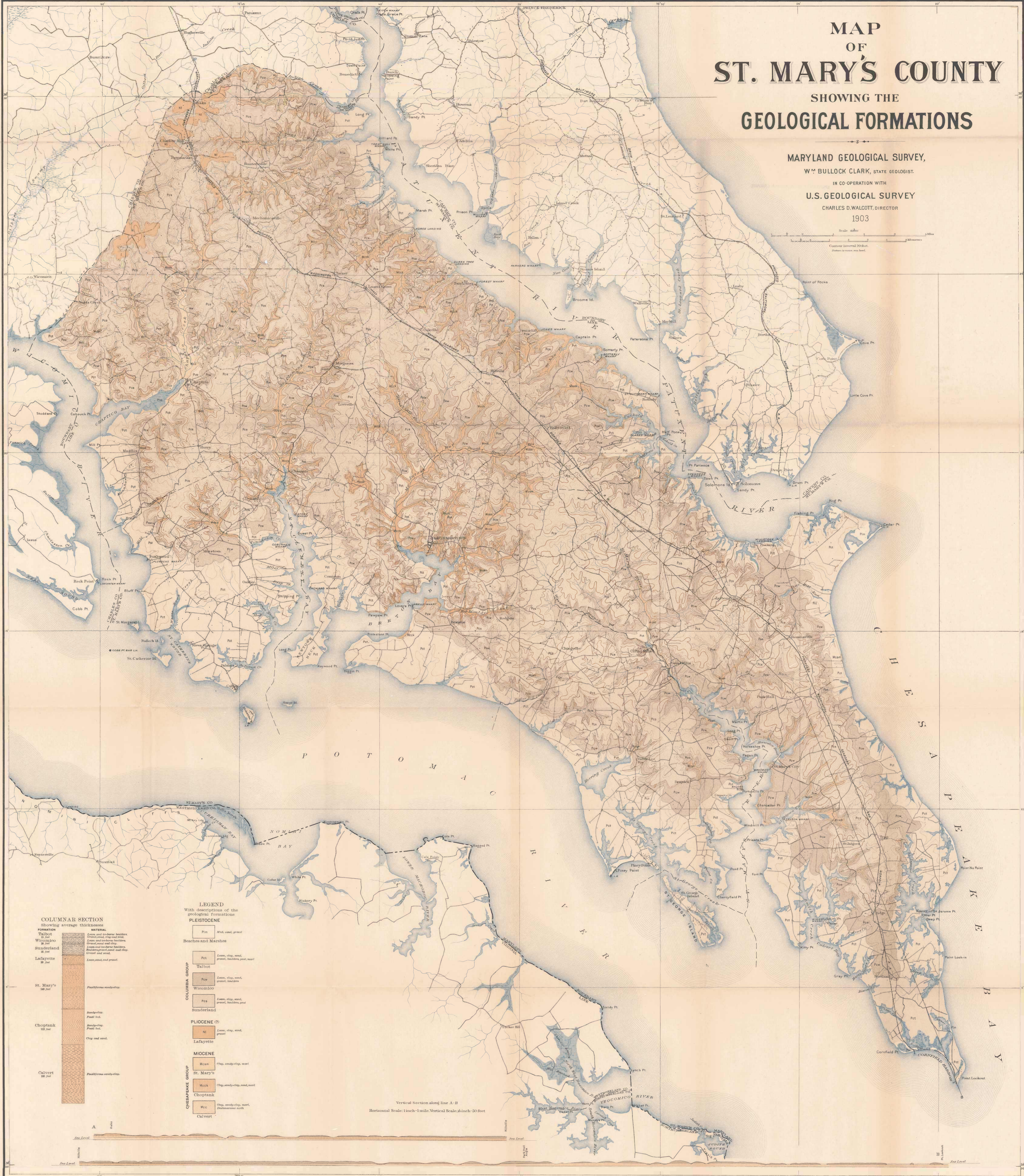
MARYLAND GEOLOGICAL SURVEY,
WM BULLOCK CLARK, STATE GEOLOGIST.

IN CO-OPERATION WITH
U.S. GEOLOGICAL SURVEY

CHARLES D. WALCOTT, DIRECTOR

1903

Scale 1:62,500
Contours Interval 20 Feet.
Datum is mean sea level.



LEGEND
With descriptions of the geological formations

PLEISTOCENE

- Pm Mid. sand, gravel
- Baches and Marshes

COLUMBIA GROUP

- Pst Loam, clay, sand, gravel, boulders, peat, marl
- Talbot
- Pcp Loam, clay, sand, gravel, boulders
- Wisconsin
- Pcs Loam, clay, sand, gravel, boulders, peat
- Sunderland

PLIOCENE (?)

- Ni Loam, clay, sand, gravel
- Lafayette

MIOCENE

- Mcm Clay, sandy clay, marl
- St. Mary's
- Mcck Clay, sandy clay, sand, marl
- Choptank
- Mcc Clay, sandstone, marl, phosphatic earth
- Calvert

Vertical Section along line A-B
Horizontal Scale: 1 inch = 1 mile. Vertical Scale: 4 inches = 50 feet