

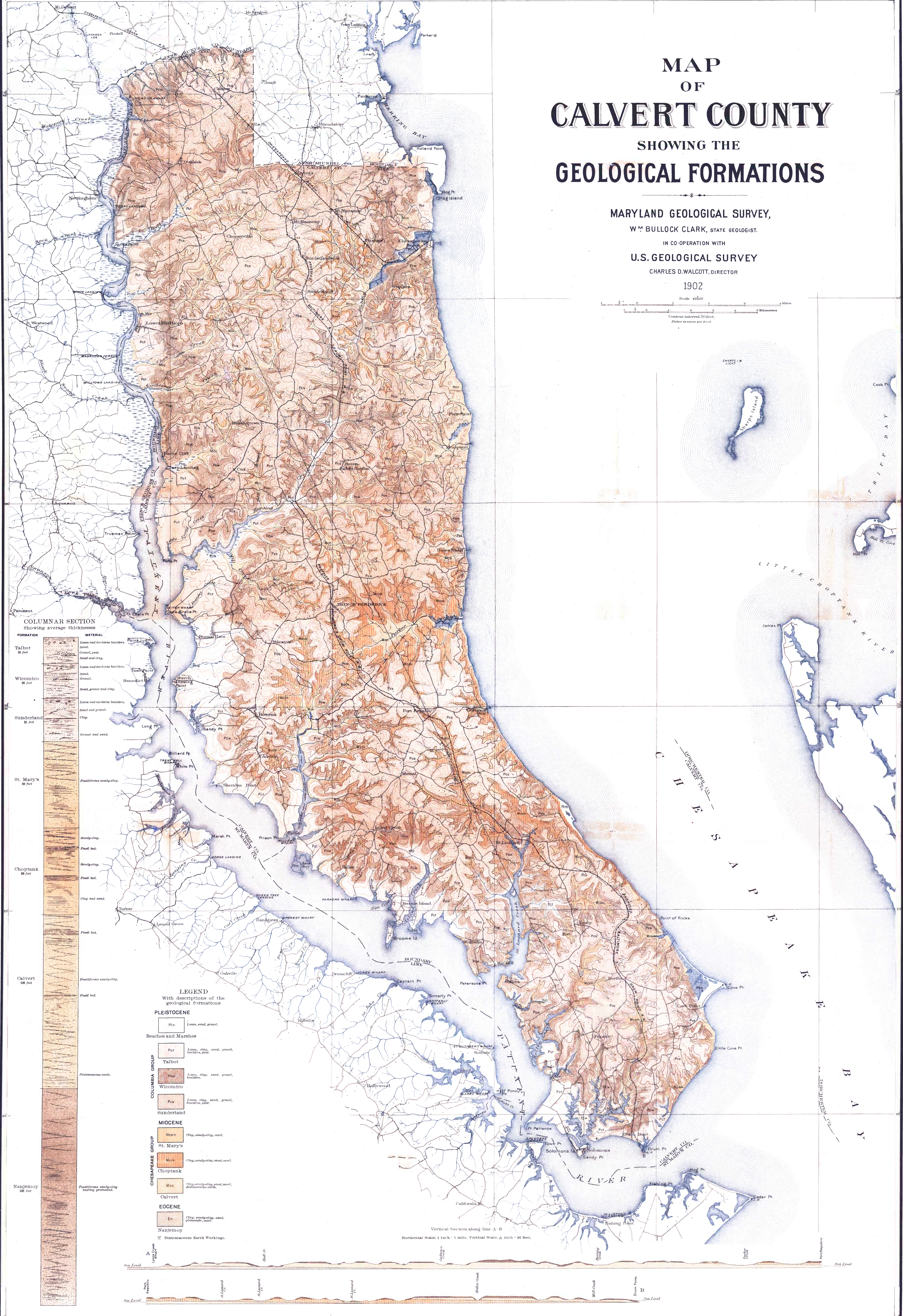
MAP OF CALVERT COUNTY

SHOWING THE GEOLOGICAL FORMATIONS

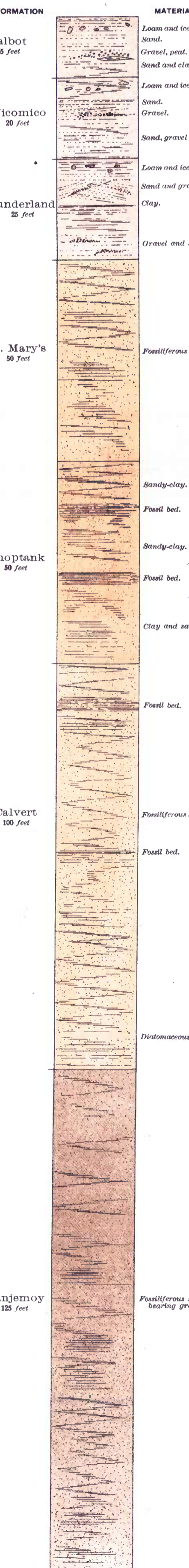
MARYLAND GEOLOGICAL SURVEY,
WM BULLOCK CLARK, STATE GEOLOGIST.
IN CO-OPERATION WITH
U.S. GEOLOGICAL SURVEY
CHARLES D. WALCOTT, DIRECTOR

1902

Scale 4:25000
Contour interval 20 feet.
Distances in miles and feet.



COLUMNAR SECTION
Showing average thicknesses



LEGEND
With descriptions of the geological formations

PLEISTOCENE

- Pm Loom, sand, gravel.

Beaches and Marshes

- Pot Loom, clay, sand, gravel, sandstone, peat.

COLUMBIA GROUP

- Talbot Loom, clay, sand, gravel, mica.
- Wicomico Loom, clay, sand, gravel, sandstone, peat.

MIOCENE

- Mean Clay, sand, gravel, mica.
- St. Mary's Clay, sand, gravel, mica, peat.

CHEAPUNK GROUP

- Choptank Clay, sand, gravel, mica, peat.
- Mcc Clay, sand, gravel, mica, peat, diatomaceous earth.

Eocene

- En Clay, sand, gravel, mica, peat, diatomaceous earth.
- Nanjemoy Clay, sand, gravel, mica, peat, diatomaceous earth.

X Diatomaceous Earth Workings.

Vertical Section along line A-B
Horizontal Scale: 1 inch = 1 mile. Vertical Scale: 1 inch = 50 feet.

George Burbank Shattuck, Geologist in Charge
Surveyed by George Burbank Shattuck, assisted by
L. C. Glenn, B. L. Miller and W. D. Neal
Surveyed in 1898-1902

1914 HENRY CO. BALTIMORE MD.