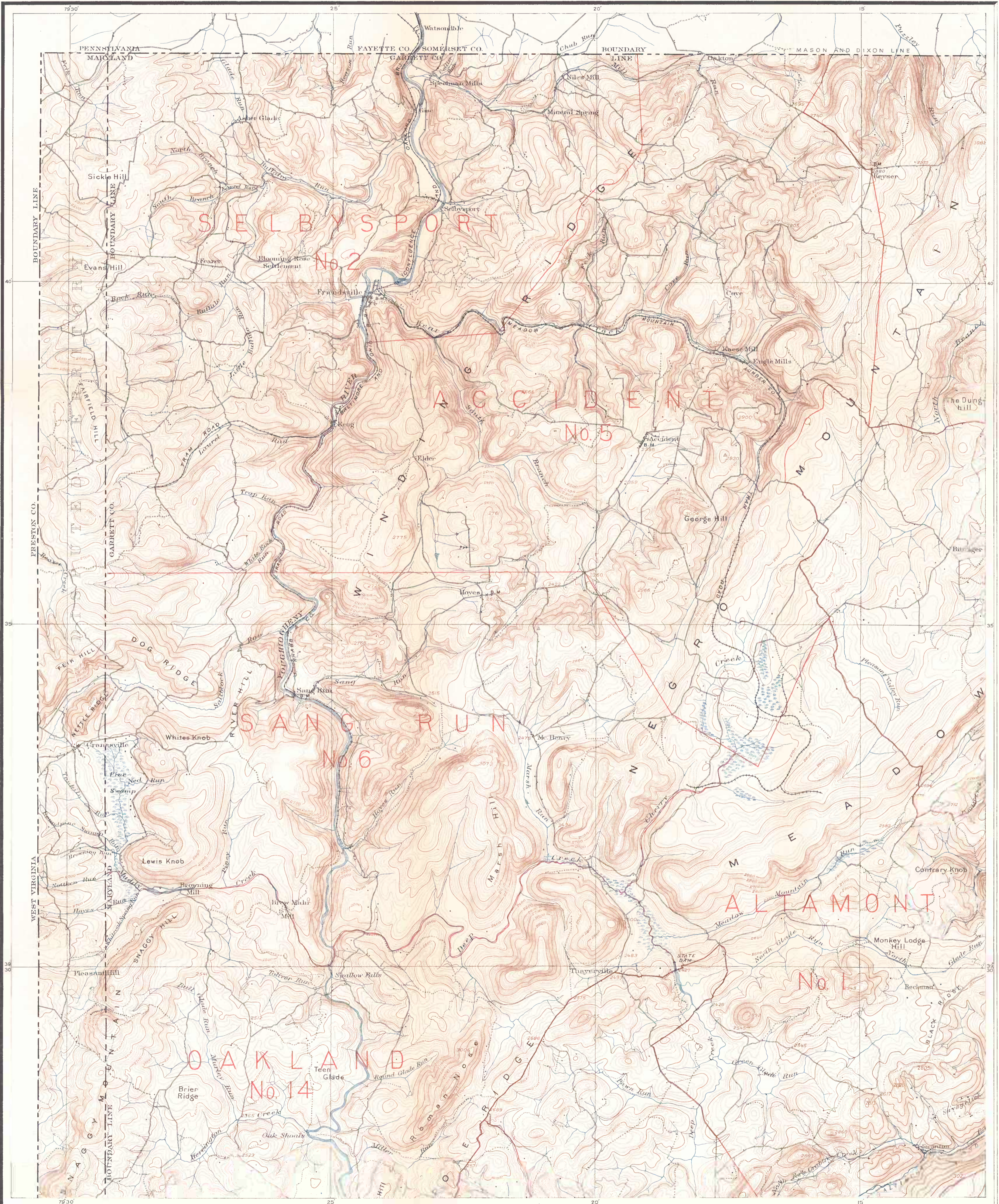


PHYSICAL ATLAS OF MARYLAND

MARYLAND GEOLOGICAL SURVEY
WM BULLOCK CLARK, STATE GEOLOGIST.

TOPOGRAPHY AND ELECTION DISTRICTS

GARRETT COUNTY
NORTH - WEST SHEET



U. M. Wilson, Chief of Division.
Topography by W. Carvel Hall
Surveyed in 1898 and 1899.

A. Ross & Co. Lith. Baltimore.