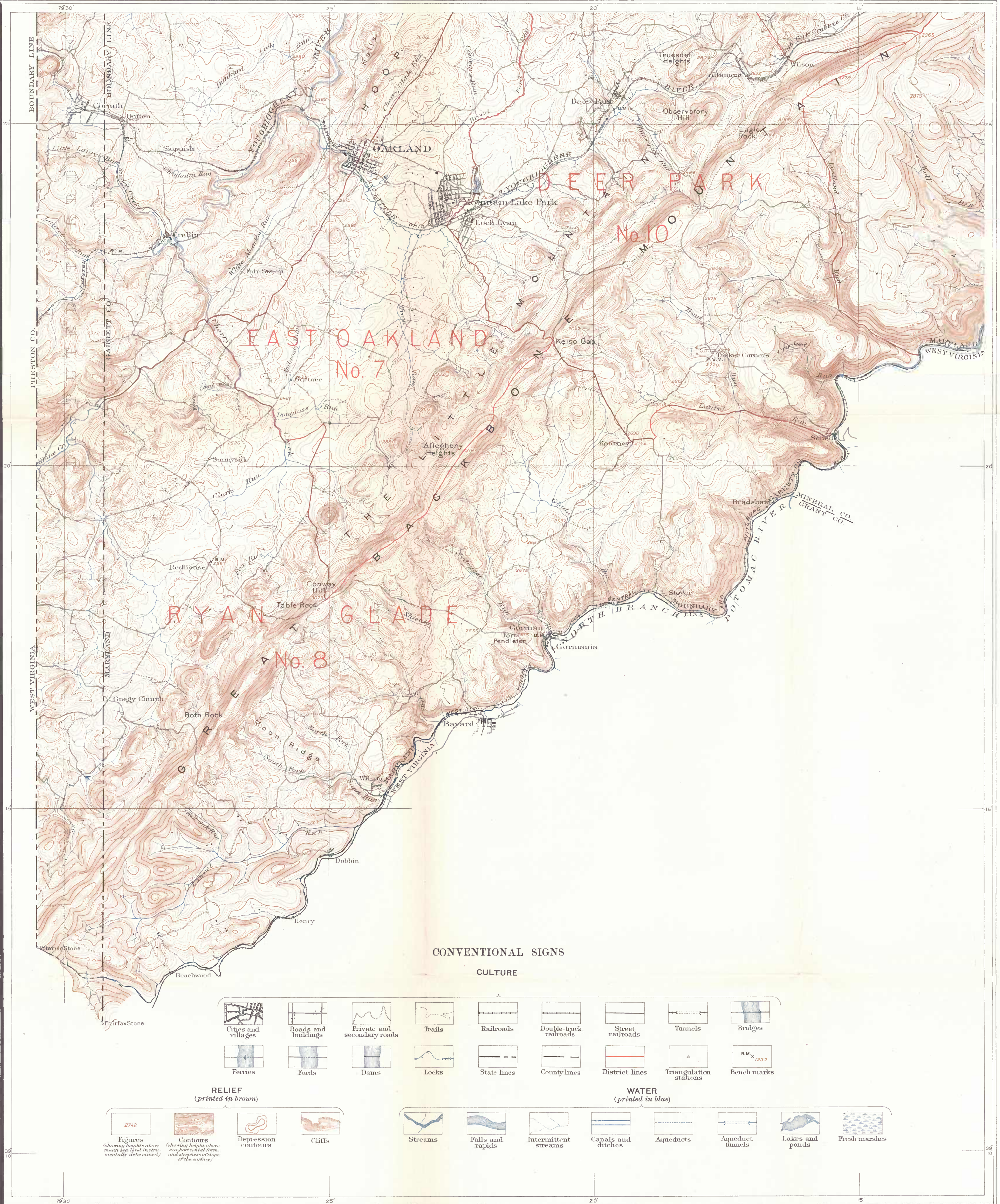


PHYSICAL ATLAS OF MARYLAND.

MARYLAND GEOLOGICAL SURVEY
WM BULLOCK CLARK, STATE GEOLOGIST.

TOPOGRAPHY AND ELECTION DISTRICTS.

GARRETT COUNTY
SOUTH-WEST SHEET



H. M. Wilson, Chief of Division.
Topography by W. Carvel Hall
Surveyed in 1899.

Published by the U.S. Geological Survey