

SALISBURY QUADRANGLE  
MARYLAND  
7.5 MINUTE SERIES (ORTHOPHOTOQUAD)



State of Maryland  
Parris N. Glendening, Governor  
Kathleen Kennedy Townsend, Lt. Governor  
Department of Natural Resources  
J. Charles Fox, Secretary  
Karen M. White, Deputy Secretary  
Resource Assessment Service  
Paul O. Massicot, Director  
Maryland Geological Survey  
Emery T. Cleaves, Director

Shoreline Changes  
Salisbury Quadrangle, MD

Compiled by

Maryland Geological Survey  
Coastal and Estuarine Geology Program  
2300 St. Paul Street  
Baltimore, Maryland 21218  
Telephone: (410) 554-5500  
Website: www.mgs.md.gov

2001

LEGEND

 1989 Shoreline

SOURCES OF DATA

Base Image  
Composite of resampled digital orthophoto quarter quads (Salisbury - NE, NW, SE, SW) produced by the Maryland Department of Natural Resources (DNR) from aerial photography flown on April, 14 1989, and April 17, 1989

Shorelines  
1989 - orthophotoquad shoreline extracted from a DNR digital wetlands delineation based on photo interpretation of digital orthophoto quarter quads

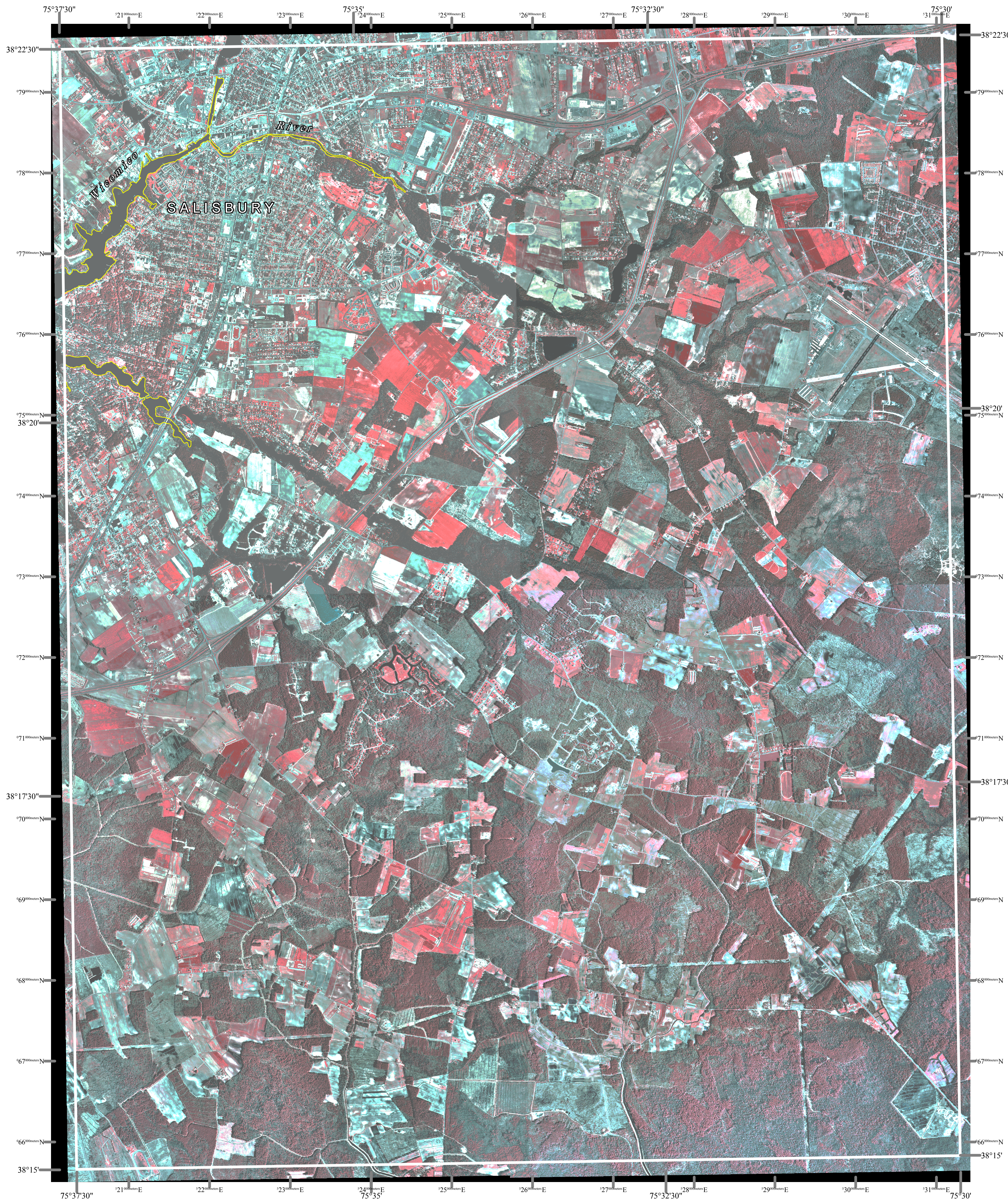
ACKNOWLEDGMENTS

This map was prepared using the geographic information system TNTmips by MicroImages, Inc.

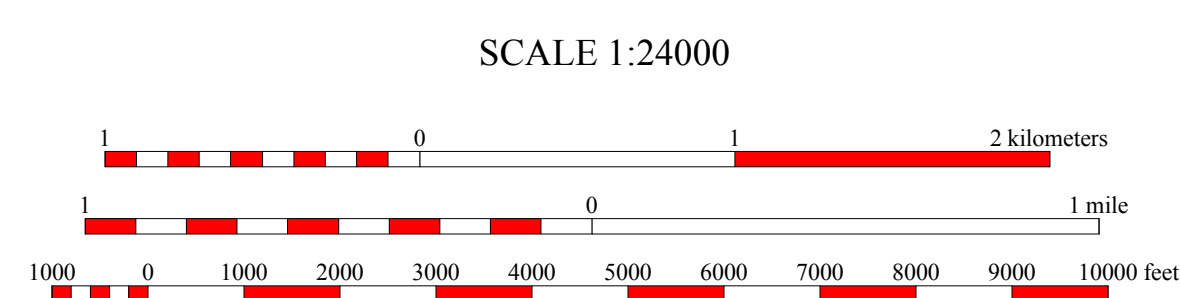
Partial funding was provided by a grant from the National Oceanic and Atmospheric Administration (Award No. NA 07OZ0118), administered by the Maryland Department of Natural Resources, Coastal Zone Management Program (CZM Grant M01-056 CZM 040).

*The facilities and services of the Maryland Department of Natural Resources are available to all without regard to race, color, religion, sex, sexual orientation, age, national origin, or physical or mental disability.*

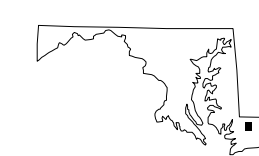
*This document is available in alternative format upon request from a qualified individual with a disability.*



North American Datum of 1983 (NAD 83)  
Projection and 1000-meter grid ticks:  
Maryland State Plane Coordinate System



HORIZONTAL DATUM NAD 83



1	2	3
4	5	6
7	8	

1 Hebron  
2 Delmar  
3 Pittsville  
4 Eden  
5 Wango  
6 Princess Anne  
7 Dividing Creek  
8 Snow Hill

INDEX TO ADJOINING 7.5' MAPS

SALISBURY, MD  
MGS-01-209-1  
First Edition  
DATES OF PHOTOGRAPHY  
A April 17, 1989  
B April 14, 1989

