

ROUND BAY QUADRANGLE
MARYLAND
7.5 MINUTE SERIES (ORTHOPHOTOQUAD)



State of Maryland
Parris N. Glendening, Governor
Kathleen Kennedy Townsend, Lt. Governor
Department of Natural Resources
J. Charles Fox, Secretary
Karen M. White, Deputy Secretary
Resource Assessment Service
Paul O. Massicot, Director
Maryland Geological Survey
Emery T. Cleaves, Director

Shoreline Changes
Round Bay Quadrangle, MD

Compiled by

Maryland Geological Survey
Coastal and Estuarine Geology Program
2300 St. Paul Street
Baltimore, Maryland 21218
Telephone: (410) 554-5500
Website: www.mgs.md.gov

2001

LEGEND

	1845 Shoreline
	1934 Shoreline
	1965 Shoreline
	1976 Shoreline
	1994 Shoreline

SOURCES OF DATA

Base Image
Composite of resampled digital orthophoto quarter quads (Round Bay - NE, NW, SE, SW) produced by the Maryland Department of Natural Resources (DNR) from aerial photography flown on April 4, 1994, and April 8, 1994

Shorelines
1845 - Historical Shorelines CZM Map 33A (Maryland Geological Survey, 1975); digitized using AutoCAD

1934, 1965, 1976 - National Oceanic and Atmospheric Administration, National Ocean Service T-sheets listed below; digitized using GSMAP or AutoCAD

T-sheet	Field Edit	Date of Photography
T-5344	none	1934
T-12954	none	1965
T-12955	none	1965
TP-00964	none	1976

1994 - orthophotoquad shoreline extracted from a DNR digital wetlands delineation based on photo interpretation of digital orthophoto quarter quads

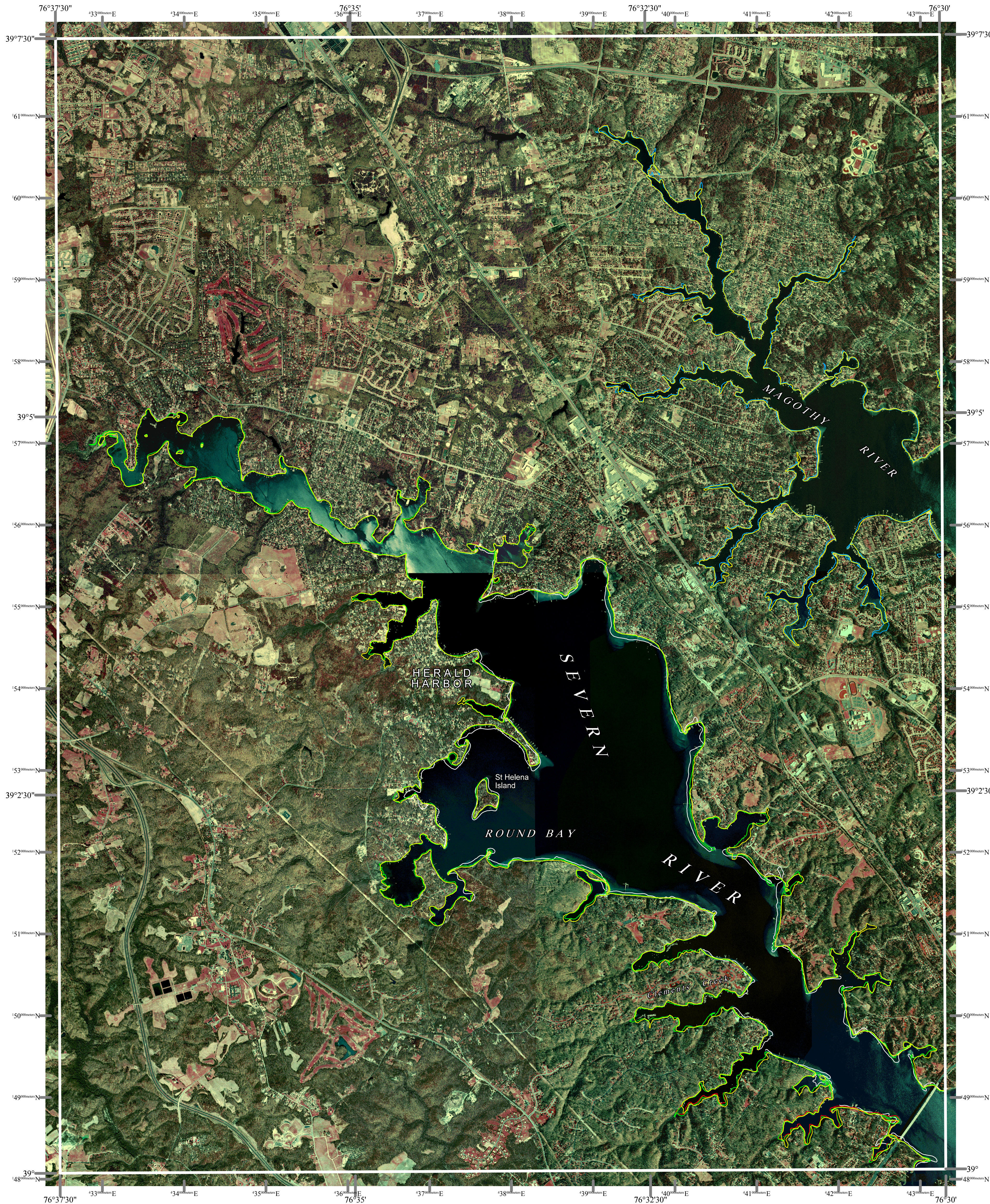
ACKNOWLEDGMENTS

This map was prepared using the geographic information system TNTmips by MicroImages, Inc.

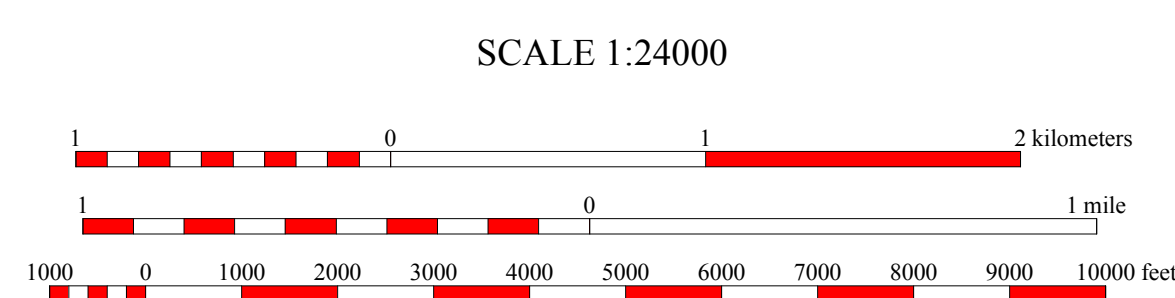
Partial funding was provided by a grant from the National Oceanic and Atmospheric Administration (Award No. NA 07OZ0118), administered by the Maryland Department of Natural Resources, Coastal Zone Management Program (CZM Grant M01-056 CZM 040).

The facilities and services of the Maryland Department of Natural Resources are available to all without regard to race, color, religion, sex, sexual orientation, age, national origin, or physical or mental disability.

This document is available in alternative format upon request from a qualified individual with a disability.



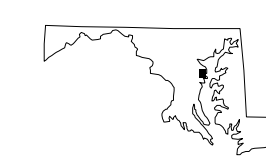
North American Datum of 1983 (NAD 83)
Projection and 1000-meter grid ticks:
Maryland State Plane Coordinate System



HORIZONTAL DATUM NAD 83

ROUND BAY, MD
Second Edition

DATES OF PHOTOGRAPHY
A April 4, 1994
B April 8, 1994



1	2	3
4	A	5
6	7	8

INDEX TO ADJOINING 7.5' MAPS

