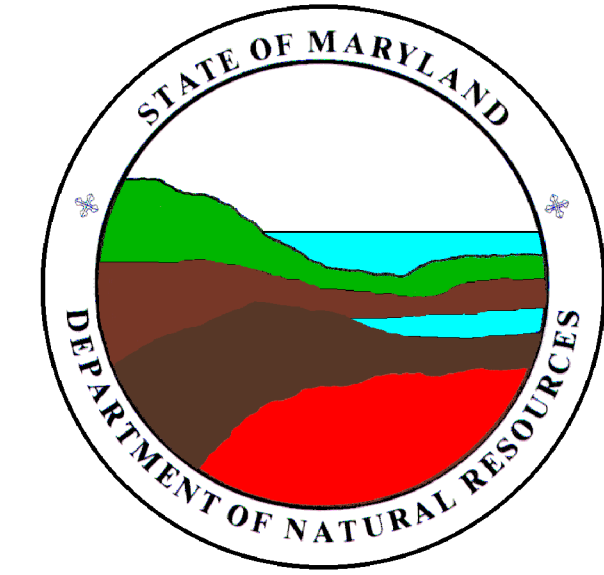


RICHLAND POINT QUADRANGLE
MARYLAND
7.5 MINUTE SERIES (ORTHOPHOTOQUAD)



State of Maryland
Parris N. Glendening, Governor
Kathleen Kennedy Townsend, Lt. Governor
Department of Natural Resources
J. Charles Fox, Secretary
Karen M. White, Deputy Secretary
Resource Assessment Service
Paul O. Massicot, Director
Maryland Geological Survey
Emery T. Cleaves, Director




Shoreline Changes
Richland Point Quadrangle, MD

Compiled by

Maryland Geological Survey
Coastal and Estuarine Geology Program
2300 St. Paul Street
Baltimore, Maryland 21218
Telephone: (410) 554-5500
Website: www.mgs.md.gov

2001

LEGEND

-  1849 Shoreline
-  1942 Shoreline
-  1994 Shoreline

SOURCES OF DATA

Base Image
Digital orthophoto quarter quad (Richland Point - NE)
produced by the Maryland Department of Natural
Resources (DNR) from aerial photography flown on
April 8, 1994

Shorelines
1849 - Historical Shorelines CZM Map 77A (Maryland
Geological Survey, 1975); digitized using AutoCAD

1942 - National Oceanic and Atmospheric Administration,
National Ocean Service T-sheet listed below; vectorized
using CADCORE

T-sheet	Field Edit	Date of Photography
T-8136	none	1942

1994 - orthophotoquad shoreline extracted from a DNR
digital wetlands delineation based on photo interpretation of
digital orthophoto quarter quads

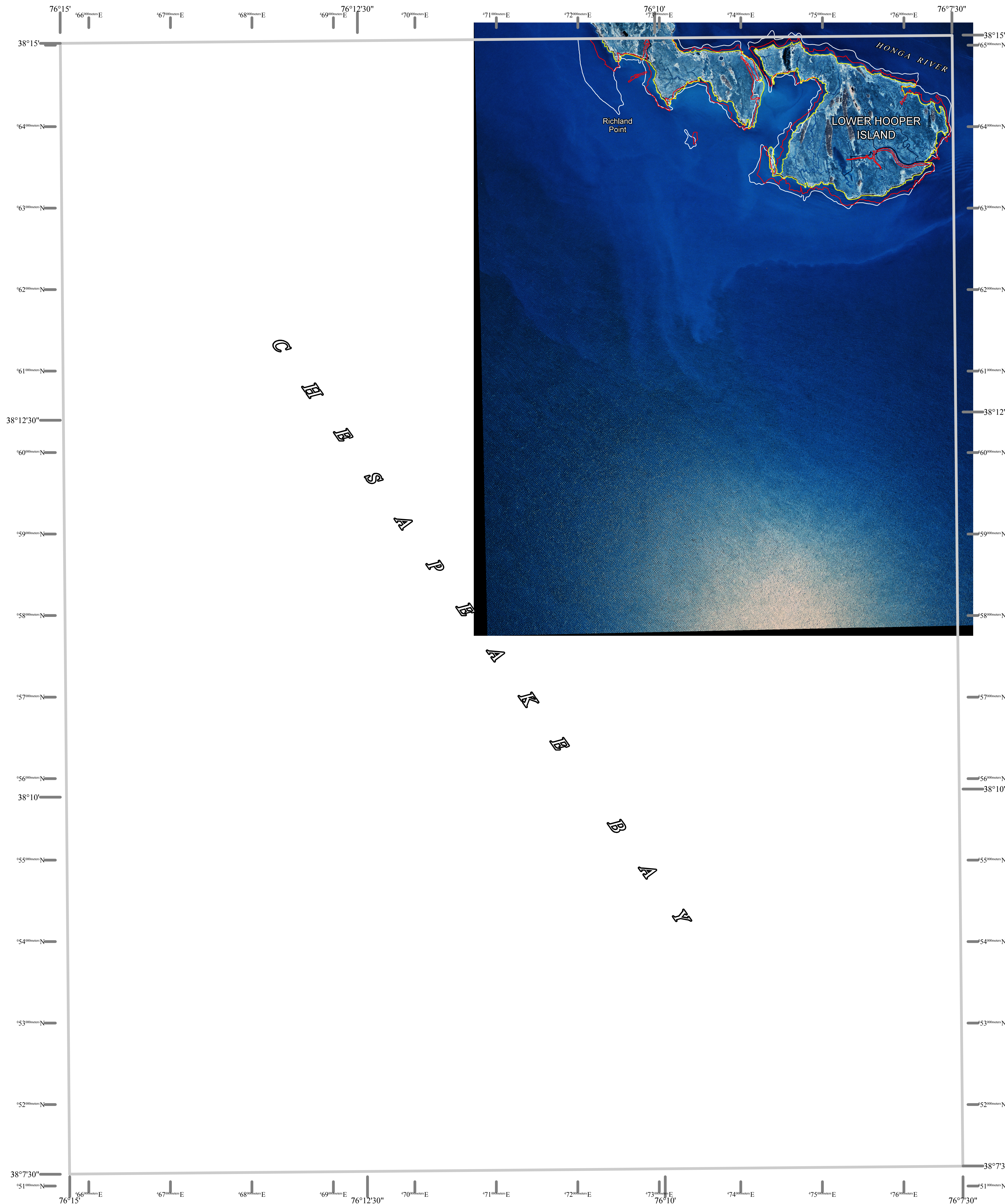
ACKNOWLEDGMENTS

This map was prepared using the geographic information
system TNTmips by MicroImages, Inc.

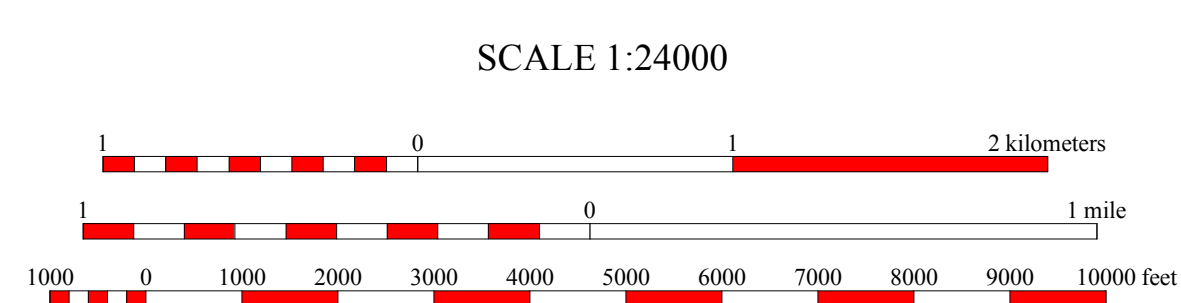
Partial funding was provided by a grant from the National
Oceanic and Atmospheric Administration (Award No. NA
07OZ0118), administered by the Maryland Department of
Natural Resources, Coastal Zone Management Program
(CZM Grant M01-056 CZM 040).

*The facilities and services of the Maryland Department of
Natural Resources are available to all without regard to race,
color, religion, sex, sexual orientation, age, national origin,
or physical or mental disability.*

*This document is available in alternative format upon
request from a qualified individual with a disability.*



North American Datum of 1983 (NAD 83)
Projection and 1000-meter grid ticks:
Maryland State Plane Coordinate System



HORIZONTAL DATUM NAD 83



RICHLAND POINT, MD
MGS-01-198-1
Second Edition
DATE OF PHOTOGRAPHY
April 8, 1994

1	2	3
4	5	6
7	8	

- 1 Barren Island
- 2 Honga
- 3 Wingate
- 4 Point No Point
- 5 Bloodworth Island
- 6 Point Lookout
- 7 - none -
- 8 Kedges Straits

INDEX TO ADJOINING 7.5' MAPS

