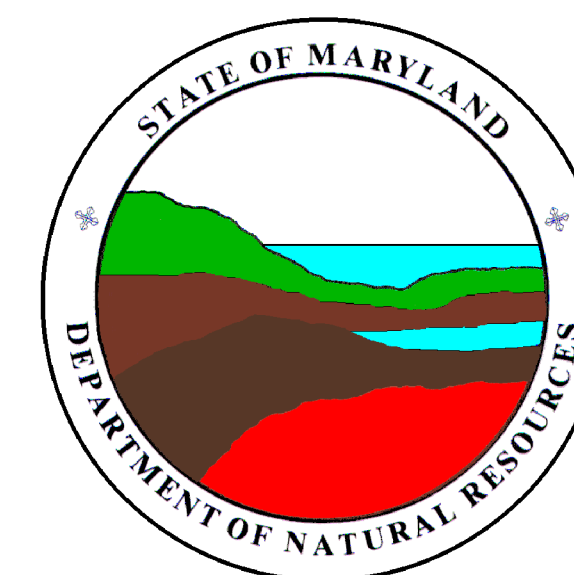


PINEY POINT QUADRANGLE
MARYLAND-VIRGINIA
7.5 MINUTE SERIES (ORTHOPHOTOQUAD)



State of Maryland
Parris N. Glendening, Governor
Kathleen Kennedy Townsend, Lt. Governor
Department of Natural Resources
J. Charles Fox, Secretary
Karen M. White, Deputy Secretary
Resource Assessment Service
Paul O. Massicot, Director
Maryland Geological Survey
Emery T. Cleaves, Director





Shoreline Changes
Piney Point Quadrangle, MD-VA

Compiled by

Maryland Geological Survey
Coastal and Estuarine Geology Program
2300 St. Paul Street
Baltimore, Maryland 21218
Telephone: (410) 554-5500
Website: www.mgs.md.gov

2001

LEGEND

-  1868 Shoreline
-  1943 Shoreline
-  1958, 1959 Shorelines
-  1993 Shoreline

SOURCES OF DATA

Base Image
Composite of resampled digital orthophoto quarter quads (Piney Point - NE, NW, SE) produced by the Maryland Department of Natural Resources (DNR) from aerial photography flown on April 8, 1993

Shorelines
1868 - Historical Shorelines CZM Map 16A (Maryland Geological Survey, 1975); digitized using AutoCAD

1943, 1958, 1959 - National Oceanic and Atmospheric Administration, National Ocean Service T-sheets listed below; digitized using GSMAP or AutoCAD

T-sheet	Date of	
	Field Edit	Photography
T-8139	1943	1942
T-10657	none	1955, 1958
T-10658	none	1955, 1958
T-10665	none	1955, 1958, 1959

1993 - orthophotoquad shoreline extracted from a DNR digital wetlands delineation based on photo interpretation of digital orthophoto quarter quads

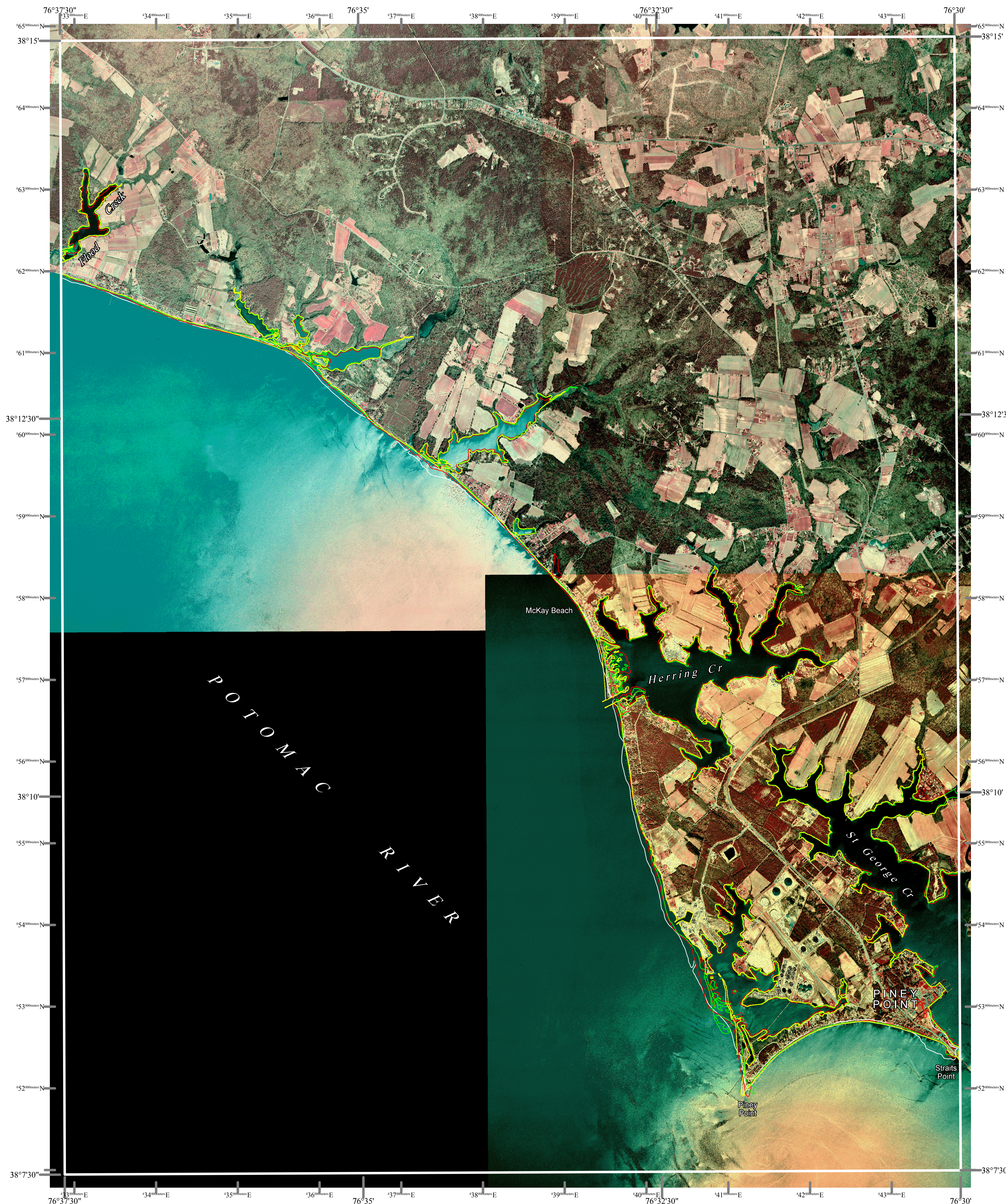
ACKNOWLEDGMENTS

This map was prepared using the geographic information system TNTmips by MicroImages, Inc.

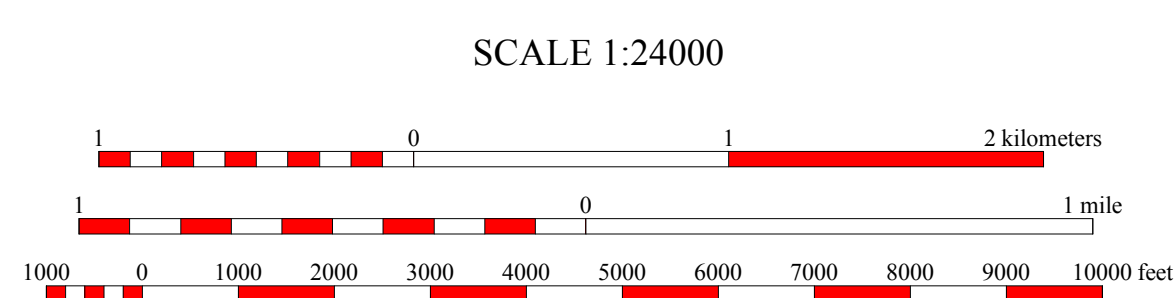
Partial funding was provided by a grant from the National Oceanic and Atmospheric Administration (Award No. NA 07OZ0118), administered by the Maryland Department of Natural Resources, Coastal Zone Management Program (CZM Grant M01-056 CZM 040).

The facilities and services of the Maryland Department of Natural Resources are available to all without regard to race, color, religion, sex, sexual orientation, age, national origin or physical or mental disability.

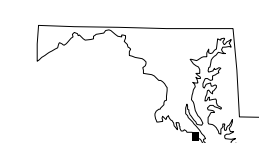
This document is available in alternative format upon request from a qualified individual with a disability.



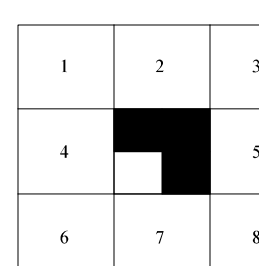
North American Datum of 1983 (NAD 83)
Projection and 1000-meter grid ticks:
Maryland State Plane Coordinate System



HORIZONTAL DATUM NAD 83



PINEY POINT, MD-VA
MGS-01-178-1
Second Edition
DATE OF PHOTOGRAPHY
April 8, 1993



- 1 Leonardtown
- 2 Hollywood
- 3 Solomons Island
- 4 St. Clements Island
- 5 St. Marys City
- 6 Machodoc
- 7 Kinsale
- 8 St. George Island

INDEX TO ADJOINING 7.5' MAPS

