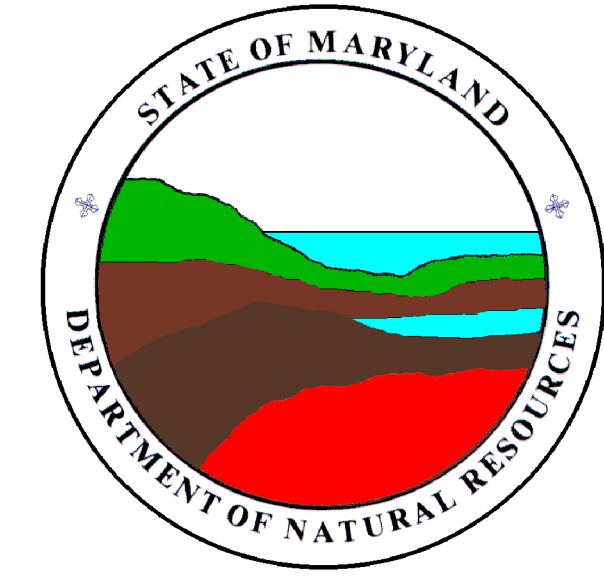


MECHANICSVILLE QUADRANGLE
MARYLAND
7.5 MINUTE SERIES (ORTHOPHOTOQUAD)



State of Maryland
Parris N. Glendening, Governor
Kathleen Kennedy Townsend, Lt. Governor
Department of Natural Resources
J. Charles Fox, Secretary
Karen M. White, Deputy Secretary
Resource Assessment Service
Paul O. Massicot, Director
Maryland Geological Survey
Emery T. Cleaves, Director





Shoreline Changes
Mechanicsville Quadrangle, MD

Compiled by

Maryland Geological Survey
Coastal and Estuarine Geology Program
2300 St. Paul Street
Baltimore, Maryland 21218
Telephone: (410) 554-5500
Website: www.mgs.md.gov

2001

LEGEND

-  1860 Shoreline
-  1942 Shoreline
-  1944 Shoreline
-  1993 Shoreline

SOURCES OF DATA

Base Image

Composite of resampled digital orthophoto quarter quads (Mechanicsville - NE, NW, SE, SW) produced by the Maryland Department of Natural Resources (DNR) from aerial photography flown on April 8, 1993

Shorelines

1860 - Historical Shorelines CZM Map 24A (Maryland Geological Survey, 1975); digitized using GSMAP

1942, 1944 - National Oceanic and Atmospheric Administration, National Ocean Service T-sheets listed below; digitized using GSMAP or AutoCAD

T-sheet	Field Edit	Date of Photography
T-8545	none	1942
T-8546	none	1942
T-8547	1944	1937, 1938, 1943

1993 - orthophotoquad shoreline extracted from a DNR digital wetlands delineation based on photo interpretation of digital orthophoto quarter quads

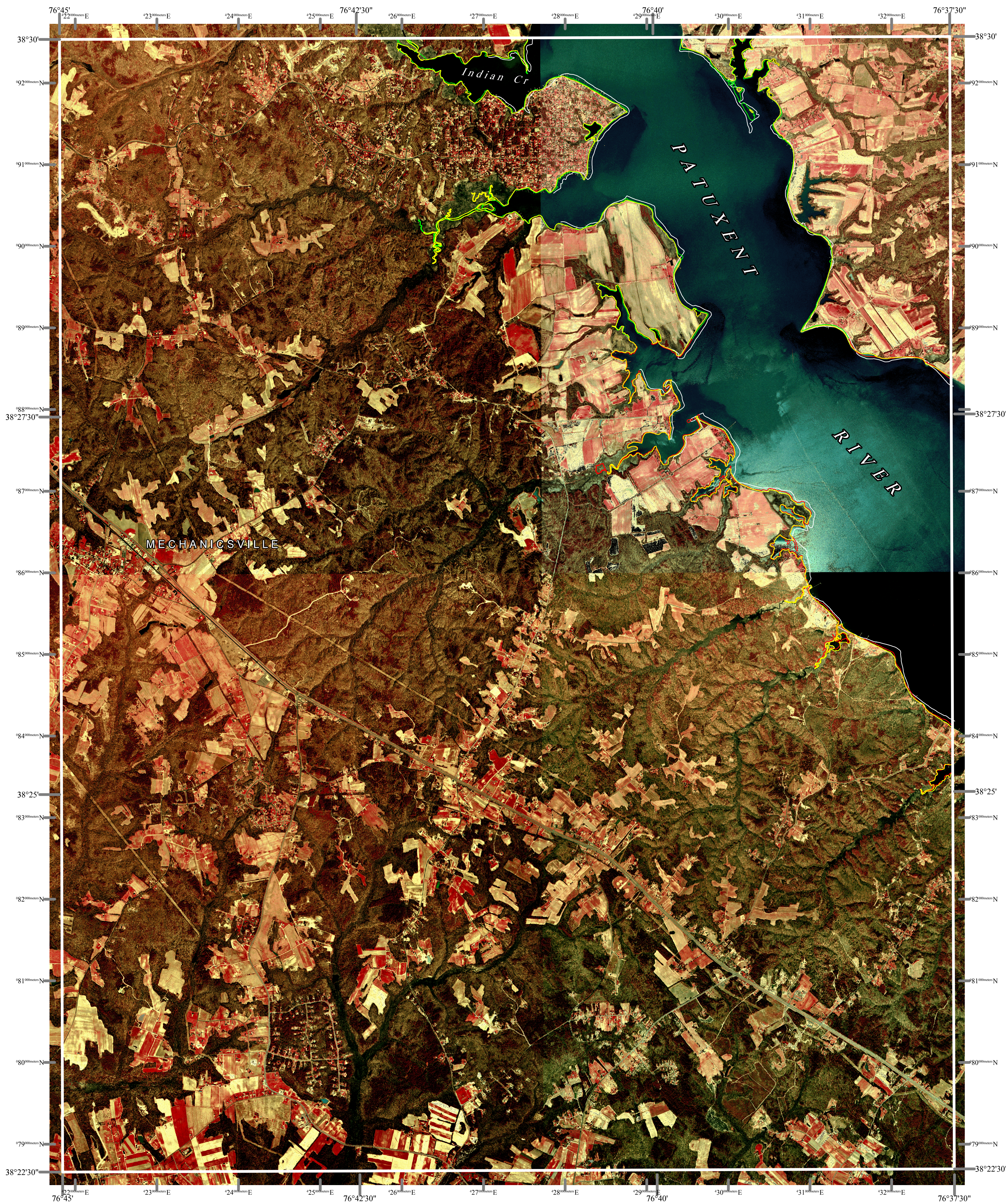
ACKNOWLEDGMENTS

This map was prepared using the geographic information system TNTmips by MicroImages, Inc.

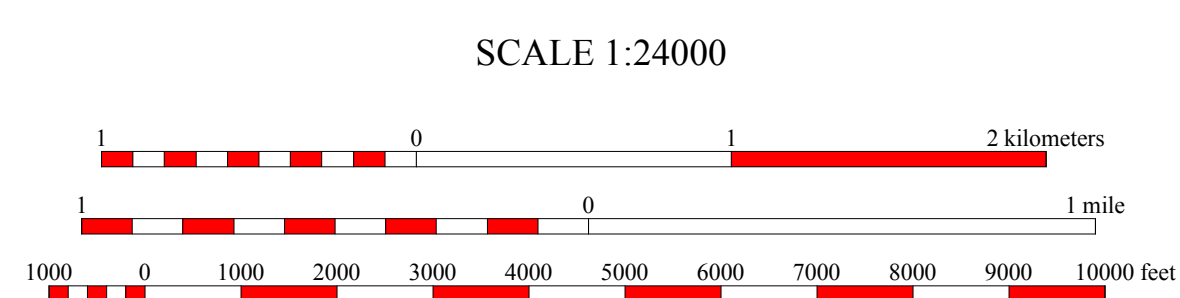
Partial funding was provided by a grant from the National Oceanic and Atmospheric Administration (Award No. NA 07OZ0118), administered by the Maryland Department of Natural Resources, Coastal Zone Management Program (CZM Grant M01-056 CZM 040).

The facilities and services of the Maryland Department of Natural Resources are available to all without regard to race, color, religion, sex, sexual orientation, age, national origin or physical or mental disability.

This document is available in alternative format upon request from a qualified individual with a disability.



North American Datum of 1983 (NAD 83)
Projection and 1000-meter grid ticks:
Maryland State Plane Coordinate System



HORIZONTAL DATUM NAD 83



MECHANICSVILLE, MD
MGS-01-150-1
Second Edition
DATE OF PHOTOGRAPHY
April 8, 1993

1	2	3
4	5	6
7	8	

- 1 Hughesville
- 2 Benedict
- 3 Prince Frederick
- 4 Charlotte Hall
- 5 Broomes Island
- 6 Rock Point
- 7 Leonardtown
- 8 Hollywood

INDEX TO ADJOINING 7.5' MAPS

