

MATHIAS POINT QUADRANGLE
MARYLAND-VIRGINIA
7.5 MINUTE SERIES (ORTHOPHOTOQUAD)



State of Maryland
Parris N. Glendening, Governor
Department of Natural Resources
Sarah J. Taylor-Rogers, Secretary
Resource Assessment Service
Paul Massicot, Director
Maryland Geological Survey
Emery T. Cleaves, Director

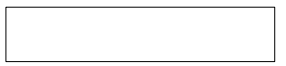



Shoreline Changes
Mathias Point Quadrangle, MD-VA

Compiled by

Maryland Geological Survey
Coastal and Estuarine Geology Program
2300 St. Paul Street
Baltimore, Maryland 21218
Telephone: (410) 554-5500
Website: www.mgs.md.gov

2000

LEGEND

-  1862 Shoreline
-  1904 Shoreline
-  1961 Shoreline
-  1993 Shoreline

SOURCES OF DATA

Base Image

Composite of resampled digital orthophoto quarter quads (Mathias Point - NE, NW, SE, SW) produced by the Maryland Department of Natural Resources (DNR) from aerial photography flown on April 7, 1993

Shorelines

1862, 1904 - Historical Shorelines CZM Map 08A (Maryland Geological Survey, 1975); digitized using AutoCAD

1961 - National Oceanic and Atmospheric Administration - National Ocean Service T-sheets listed below; digitized using GSMAP or AutoCAD

T-sheet	Field Edit	Date of Photography
T-10904	none	1958, 1961
T-10905	none	1958, 1959, 1961
T-10907	none	1958, 1961
T-10908	none	1958, 1959, 1961

1993 - orthophotoquad shoreline extracted from a DNR digital wetlands delineation based on photo interpretation of digital orthophoto quarter quads

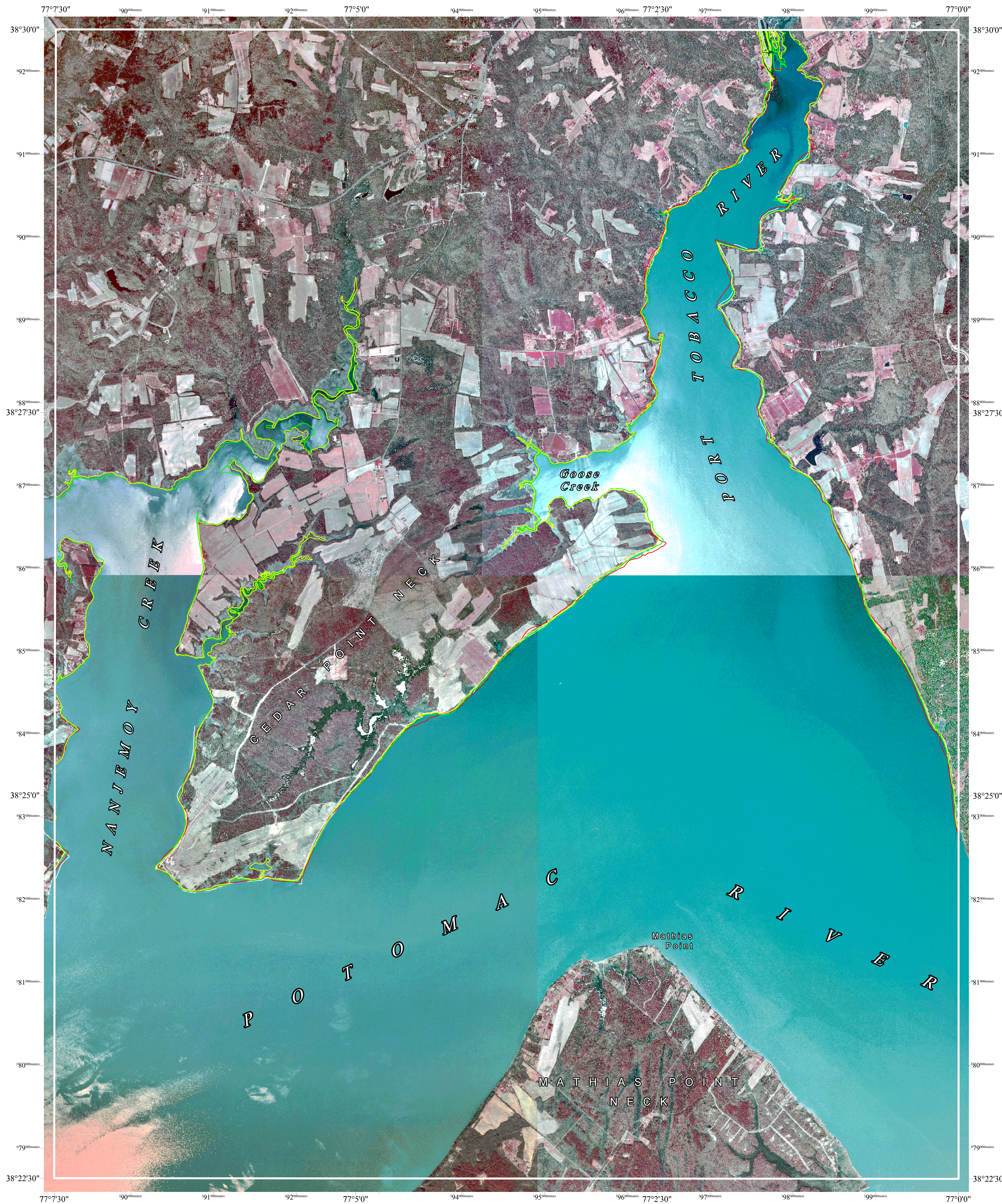
ACKNOWLEDGMENTS

This map was prepared using the Map and Image Processing System (MIPS) by MicroImages, Inc.

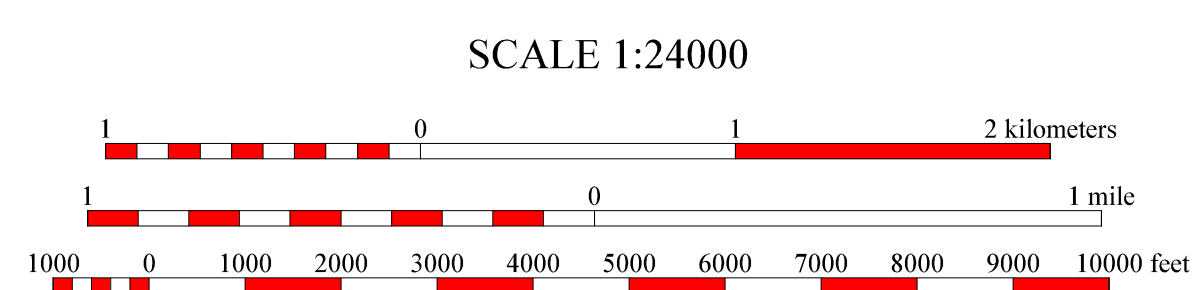
Partial funding was provided by a grant from the National Oceanic and Atmospheric Administration (Award No. NA 87OZ0236), administered by the Maryland Coastal Zone Management Program, Department of Natural Resources (CZM Grant M00-051 CZM 031).

The facilities and services of the Maryland Department of Natural Resources are available to all without regard to race, color, religion, sex, sexual orientation, age, national origin, or physical or mental disability.

This document is available in alternative format upon request from a qualified individual with a disability.



North American Datum of 1983 (NAD 83)
Projection and 1000-meter grid ticks:
Maryland State Plane Coordinate System



HORIZONTAL DATUM NAD 83

MATHIAS POINT, MD-VA
MGS-00-008-1
Second Edition
DATE OF PHOTOGRAPHY
April 7, 1993



1	2	3
4	5	6
7	8	

INDEX TO ADJOINING 7.5' MAPS

