

LOWER MARLBORO QUADRANGLE  
MARYLAND  
7.5 MINUTE SERIES (ORTHOPHOTOQUAD)



State of Maryland  
Parris N. Glendening, Governor  
Kathleen Kennedy Townsend, Lt. Governor  
Department of Natural Resources  
J. Charles Fox, Secretary  
Karen M. White, Deputy Secretary  
Resource Assessment Service  
Paul O. Massicot, Director  
Maryland Geological Survey  
Emery T. Cleaves, Director

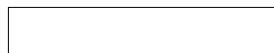


Shoreline Changes  
Lower Marlboro Quadrangle, MD

Compiled by

Maryland Geological Survey  
Coastal and Estuarine Geology Program  
2300 St. Paul Street  
Baltimore, Maryland 21218  
Telephone: (410) 554-5500  
Website: www.mgs.md.gov

2001

LEGEND

-  1859 Shoreline
-  1942 Shoreline
-  1993 Shoreline

SOURCES OF DATA

Base Image  
Orthophotoquad (38076-F6-OQ-024) produced by the U.S. Geological Survey from the following 1:40000 scale aerial (NAPP) photographs:

NAPP Photo ID	Date of Photography
5-85	4/10/1988
5-87	4/10/1988
5-156	4/10/1988
5-158	4/10/1988

Shorelines  
1859 - Historical Shorelines CZM Map 26A (Maryland Geological Survey, 1975); digitized using AutoCAD

1942 - National Oceanic and Atmospheric Administration, National Ocean Service T-sheets listed below; digitized using GSMAP or AutoCAD

T-sheet	Field Edit	Date of Photography
T-8549	none	1942
T-8550	none	1942

1993 - orthophotoquad shoreline extracted from a Maryland Department of Natural Resources (DNR) digital wetlands delineation based on photo interpretation of DNR digital orthophoto quarter quads (Lower Marlboro - NE, NW, SE, SW) flown on April 8, 1993

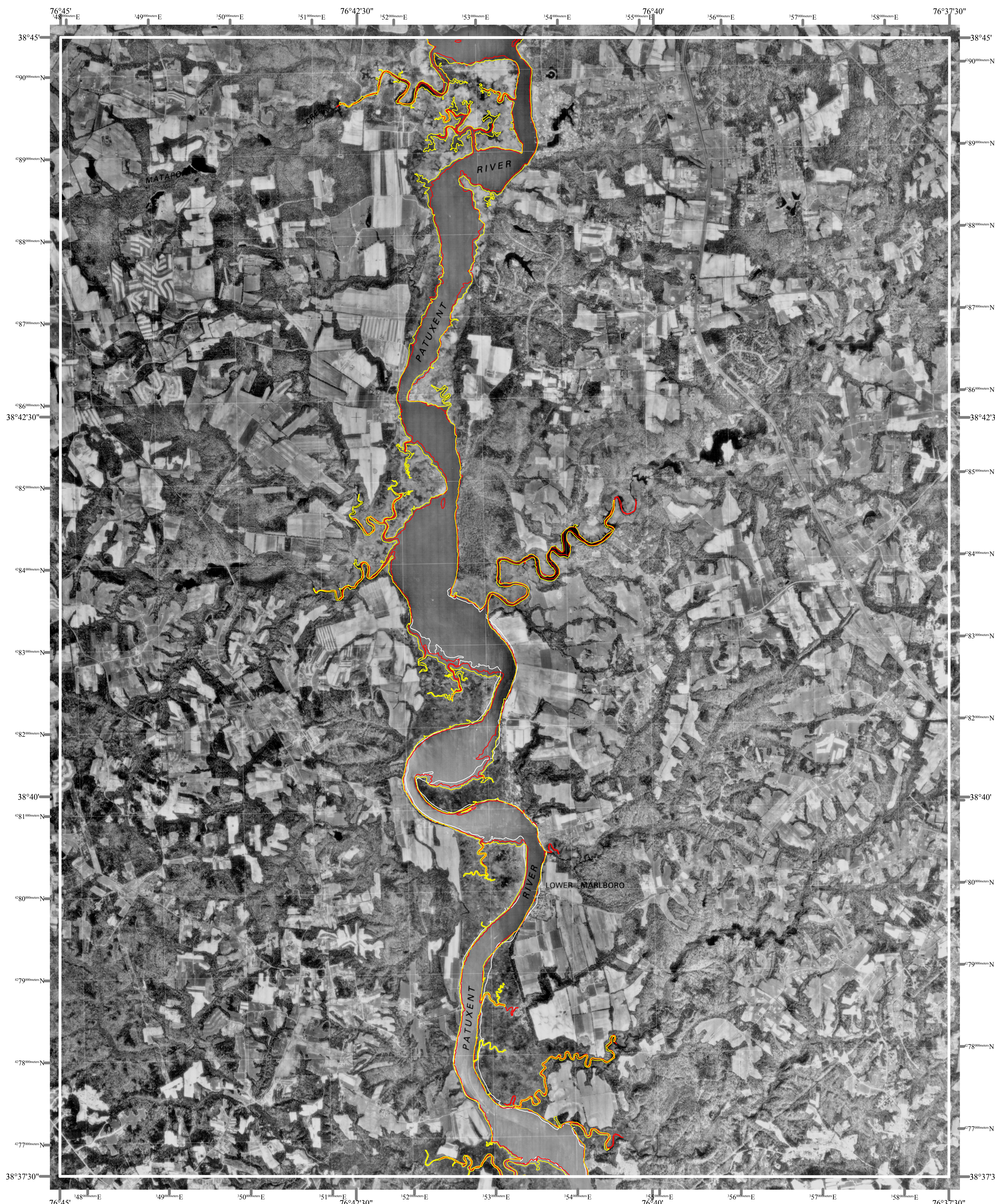
ACKNOWLEDGMENTS

This map was prepared using the geographic information system TNTmips by MicroImages, Inc.

Partial funding was provided by a grant from the National Oceanic and Atmospheric Administration (Award No. NA07OZ0118), administered by the Maryland Department of Natural Resources, Coastal Zone Management Program (CZM Grant M01-056 CZM 040).

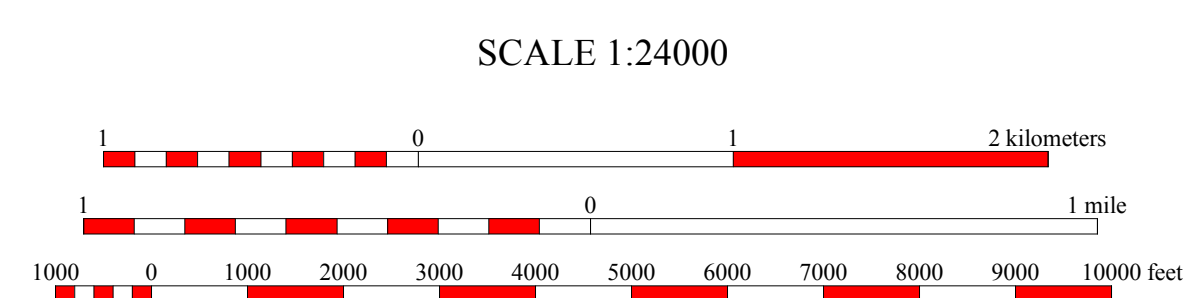
*The facilities and services of the Maryland Department of Natural Resources are available to all without regard to race, color, religion, sex, sexual orientation, age, national origin, or physical or mental disability.*

*This document is available in alternative format upon request from a qualified individual with a disability.*



North American Datum of 1983 (NAD 83)  
Projection and 1000-meter grid ticks:  
Universal Transverse Mercator: zone 18

The North American Datum of 1927 (NAD 27)  
shown as dashed corner ticks.



HORIZONTAL DATUM NAD 83

LOWER MARLBORO, MD  
MGS-01-142-1  
Second Edition  
DATE OF PHOTOGRAPHY  
April 10, 1988



1	2	3
4	5	6
7	8	

- 1 Upper Marlboro
- 2 Bristol
- 3 Deal
- 4 Brandywine
- 5 North Beach
- 6 Hughesville
- 7 Benedict
- 8 Prince Frederick

INDEX TO ADJOINING 7.5' MAPS

