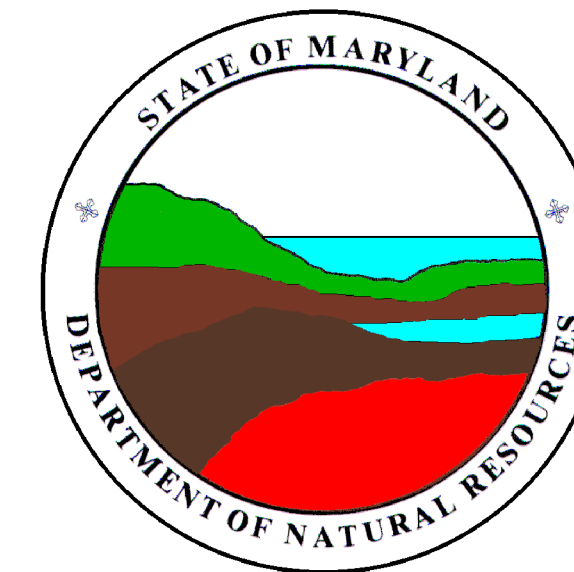


KING GEORGE QUADRANGLE
 VIRGINIA-MARYLAND
 7.5 MINUTE SERIES (ORTHO PHOTOQUAD)



State of Maryland
 Parris N. Glendening, Governor
 Kathleen Kennedy Townsend, Lt. Governor
 Department of Natural Resources
 J. Charles Fox, Secretary
 Karen M. White, Deputy Secretary
 Resource Assessment Service
 Paul O. Massicot, Director
 Maryland Geological Survey
 Emery T. Cleaves, Director


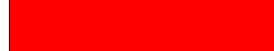



Shoreline Changes
 King George Quadrangle, VA-MD

Compiled by

Maryland Geological Survey
 Coastal and Estuarine Geology Program
 2300 St. Paul Street
 Baltimore, Maryland 21218
 Telephone: (410) 554-5500
 Website: www.mgs.md.gov

2001

LEGEND

-  1862 Shoreline
-  1903 Shoreline
-  1961 Shoreline
-  1972 Shoreline
-  1993 Shoreline

SOURCES OF DATA

Base Image
 Composite of resampled digital orthophoto quarter quads (King George - NE, NW) produced by the Maryland Department of Natural Resources (DNR) from aerial photography flown on April 7, 1993

Shorelines
 1862, 1903 - Historical Shorelines CZM Map 11A (Maryland Geological Survey, 1975); digitized using AutoCAD

1961, 1972 - National Oceanic and Atmospheric Administration, National Ocean Service T-sheets listed below; digitized using GSMAP or AutoCAD

T-sheet	Field Edit	Date of Photography
T-10912	none	1958, 1959, 1961
TP-00332	1972	1971

1993 - orthophotoquad shoreline extracted from a DNR digital wetlands delineation based on photo interpretation of digital orthophoto quarter quads

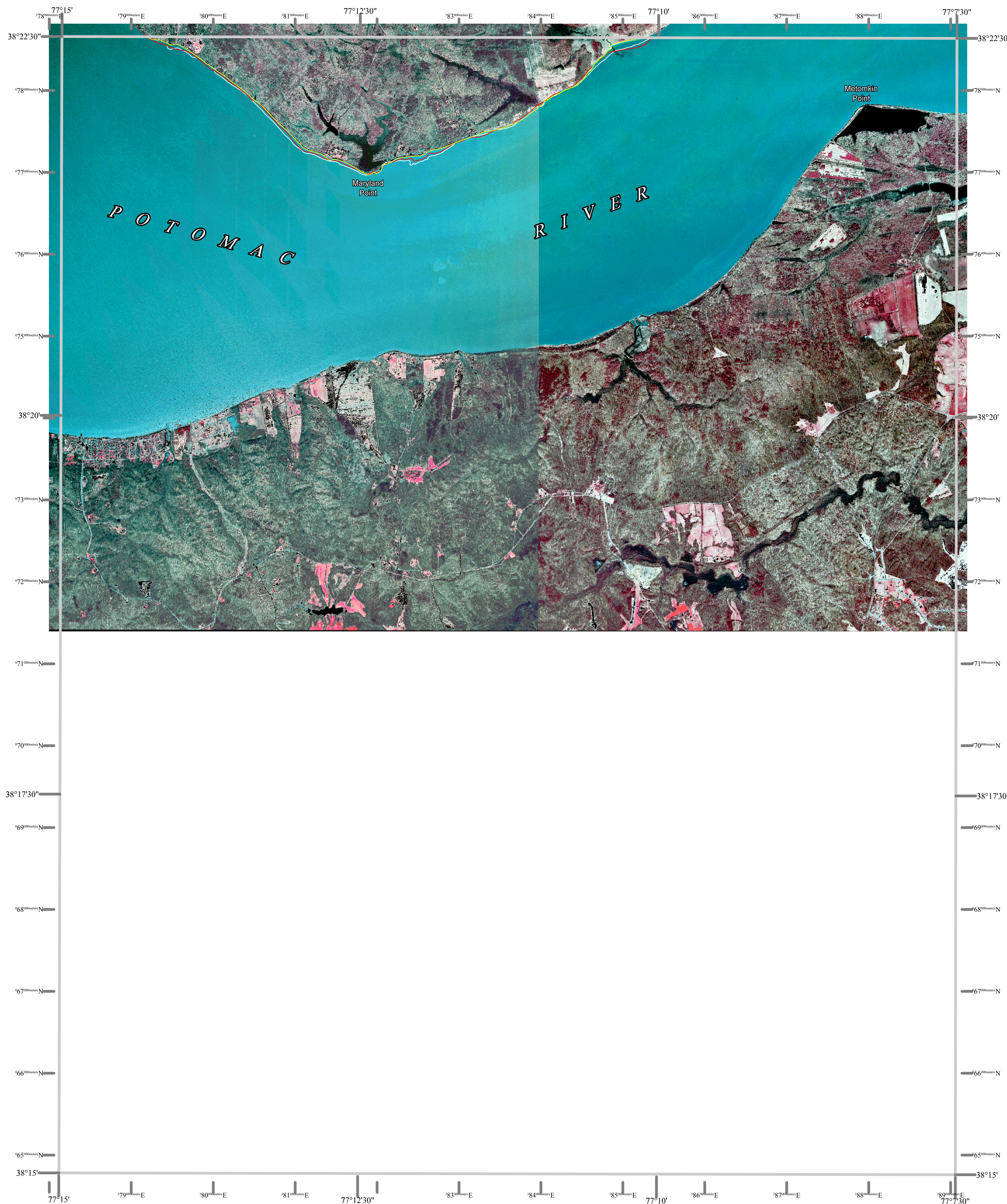
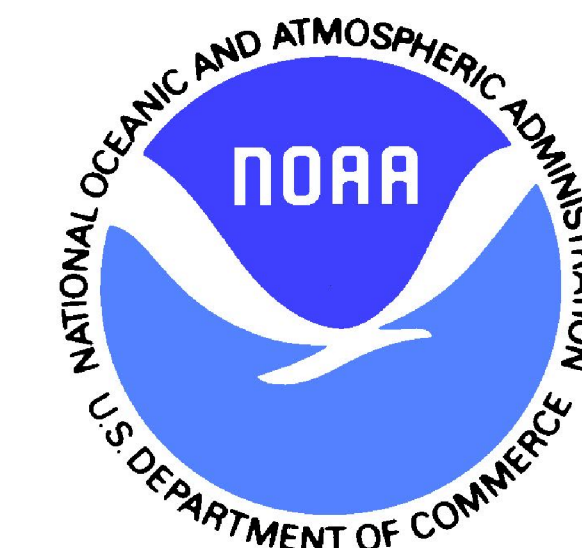
ACKNOWLEDGMENTS

This map was prepared using the geographic information system TNImps by MicroImages, Inc.

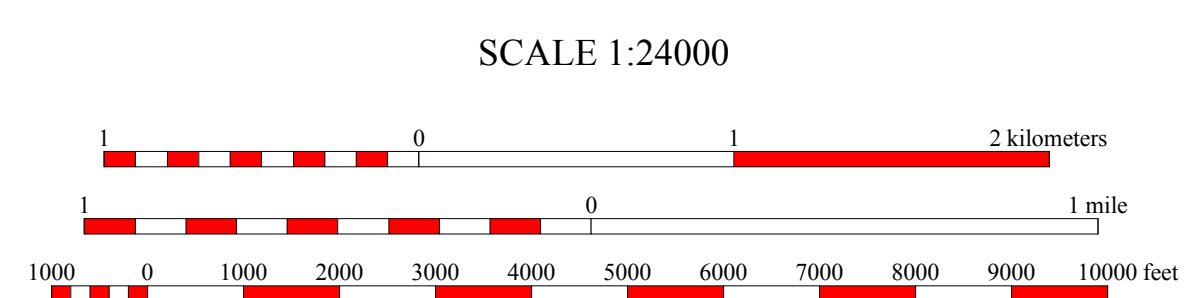
Partial funding was provided by a grant from the National Oceanic and Atmospheric Administration (Award No. NA 07OZ0118), administered by the Maryland Department of Natural Resources, Coastal Zone Management Program (CZM Grant M01-056 CZM 040).

The facilities and services of the Maryland Department of Natural Resources are available to all without regard to race, color, religion, sex, sexual orientation, age, national origin or physical or mental disability.

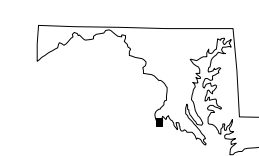
This document is available in alternative format upon request from a qualified individual with a disability.



North American Datum of 1983 (NAD 83)
 Projection and 1000-meter grid ticks:
 Maryland State Plane Coordinate System



HORIZONTAL DATUM NAD 83



KING GEORGE, VA-MD
 MGS-01-127-1
 Second Edition
 DATE OF PHOTOGRAPHY
 April 7, 1993

1	2	3
4	5	6
7	8	

INDEX TO ADJOINING 7.5' MAPS