

CURTIS BAY QUADRANGLE
MARYLAND
7.5 MINUTE SERIES (ORTHOPHOTOQUAD)



State of Maryland
Parris N. Glendening, Governor

Department of Natural Resources
Sarah J. Taylor-Rogers, Secretary

Resource Assessment Service
Paul Massicot, Director

Maryland Geological Survey
Emery T. Cleaves, Director





Shoreline Changes
Curtis Bay Quadrangle, MD

Compiled by

Maryland Geological Survey
Coastal and Estuarine Geology Program
2300 St. Paul Street
Baltimore, Maryland 21218
Telephone: (410) 554-5500
Website: www.mgs.md.gov

2000

LEGEND

-  1846 Shoreline
-  1934 Shoreline
-  1975 Shoreline
-  1994 Shoreline

SOURCES OF DATA

Base Image

Composite of resampled digital orthophoto quarter quads (Curtis Bay - NW, SW, NE, SE) produced by the Maryland Department of Natural Resources (DNR) from aerial photography flown on April 4, 1994 and April 8, 1994

Shorelines

1846, 1934 - Historical Shorelines CZM Map 35A (Maryland Geological Survey, 1975); digitized using AutoCAD

1975 - National Oceanic and Atmospheric Administration - National Ocean Service T-sheets listed below; digitized using GSMAP or AutoCAD

T-sheet	Field Edit	Date of Photography
TP-00841	1975	1974
TP-00842	1975	1974
TP-00843	1975	1974
TP-00845	1975	1974
TP-00846	1975	1974
TP-00848	1975	1974
TP-00849	1975	1974

1994 - orthophotoquad shoreline extracted from a DNR digital wetlands delineation based on photo interpretation of digital orthophoto quarter quads

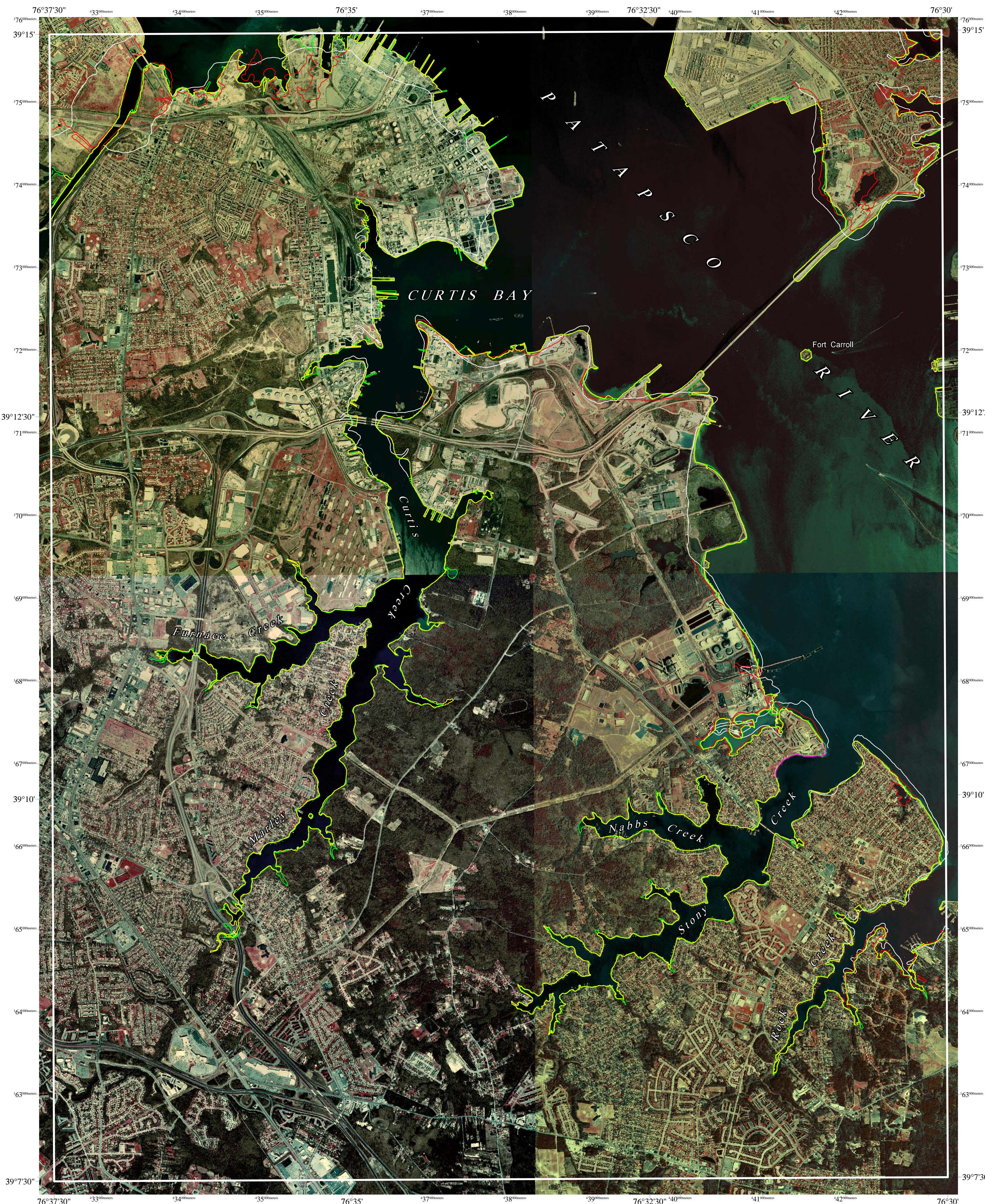
ACKNOWLEDGMENTS

This map was prepared using the Map and Image Processing System (MIPS) by Microlimages, Inc.

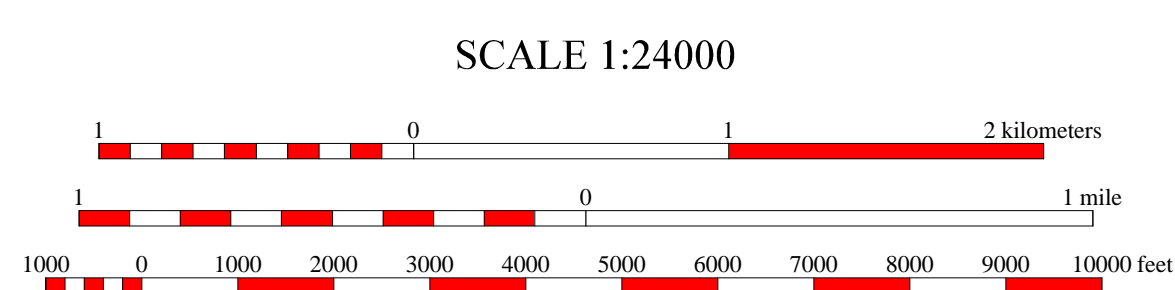
Partial funding was provided by a grant from the National Oceanic and Atmospheric Administration (Award No. NA 87OZ0236), administered by the Maryland Coastal Zone Management Program, Department of Natural Resources (CZM Grant M00-051 CZM 031).

The facilities and services of the Maryland Department of Natural Resources are available to all without regard to race, color, religion, sex, sexual orientation, age, national origin, or physical or mental disability.

This document is available in alternative format upon request from a qualified individual with a disability.



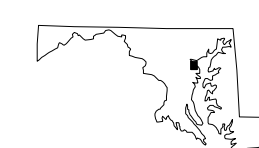
North American Datum of 1983 (NAD 83)
Projection and 1000-meter grid ticks:
Maryland State Plane Coordinate System



HORIZONTAL DATUM NAD 83

CURTIS BAY, MD
MGS-00-035-1

Second Edition
DATES OF PHOTOGRAPHY
A April 4, 1994
B April 8, 1994



1	2	3
4	A	5
6	7	8

INDEX TO ADJOINING 7.5' MAPS

