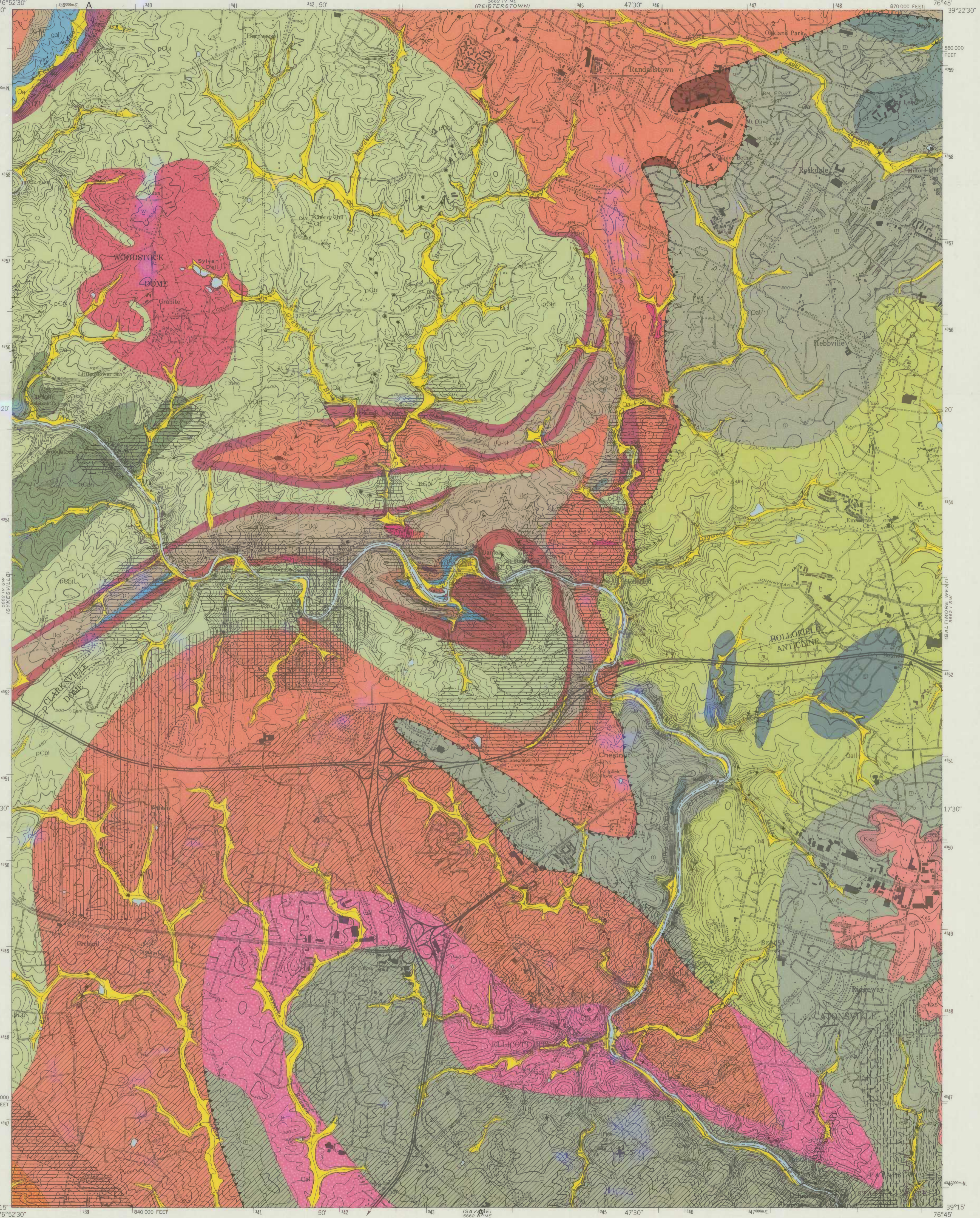


EXPLANATION

UNCONSOLIDATED TO SEMI-CONSOLIDATED STRATA
QUATERNARY
CRETACEOUS
MESOZOIC
PALAEZOIC
CAMBRIAN
BALTIMORE MAFIC COMPLEX
PRE-CAMBRIAN

Oil
Alluvium
Patuxent Formation
Diabase
Pegmatite
Guilford Granite
Woodstock Granite
Ellicott City Granite
Cold Spring Gneiss injection complex
Mount Washington Amphibolite
Hollofield Layered Ultramafite

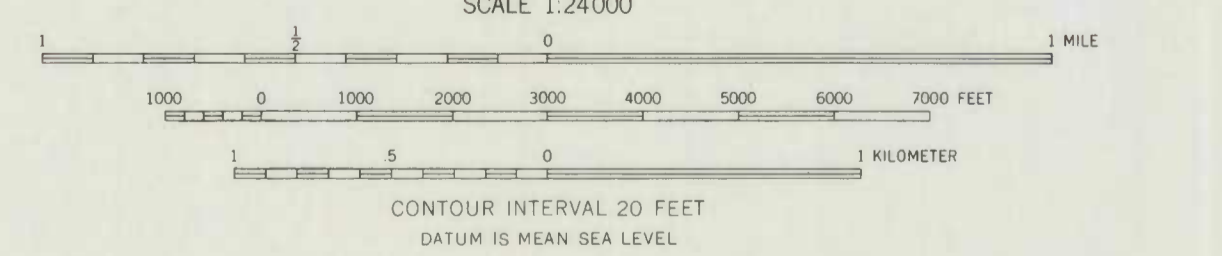
Sykesville Formation
Oella Formation
Loch Raven Schist
Cockeysville Marble
Setters Formation
Baltimore Gneiss
Hornblende gneiss member
Layered gneiss member
Radiometric ages from Higgins, M.W. 1972
For the crystalline rocks, primary minerals are listed in order of increasing abundance
For the crystalline rocks, stratigraphic units as opposed to purely lithologic units are indicated by partial or complete underlining of the rock unit abbreviation



GEOLOGIC MAP OF THE ELLICOTT CITY QUADRANGLE, MARYLAND

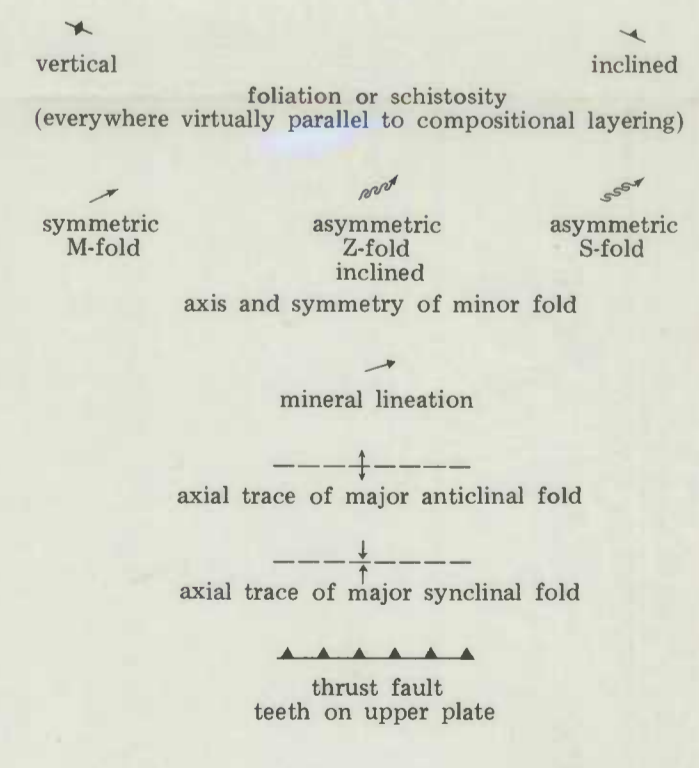
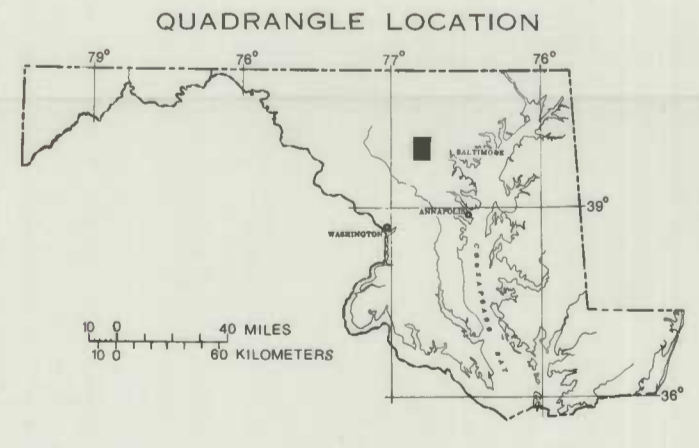
By William P. Crowley and Juergen Reinhardt

1980



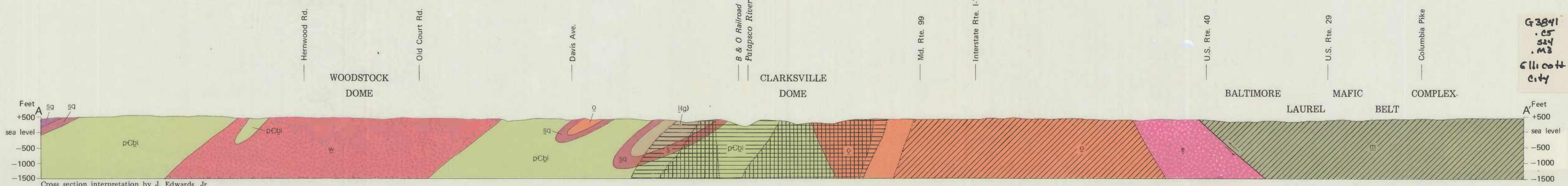
STATE OF MARYLAND
DEPARTMENT OF NATURAL RESOURCES
MARYLAND GEOLOGICAL SURVEY
Kenneth N. Weaver, Director

Copies of Map available from
Maryland Geological Survey
Johns Hopkins University
Baltimore, Maryland 21218



CROSS SECTION A-A'

Horizontal scale same as map scale, no vertical exaggeration



G3841
c5
s4
M3
C11 co 4
c4